

世界建筑 12

World Architecture 12

Office Building

办公建筑设计 II

佳图文化 编

华南理工大学出版社的标识
刮涂层 输密码 辨真伪
网上查询
http://www.scutpress.com/00000001

华南理工大学出版社
SOUTH CHINA UNIVERSITY OF TECHNOLOGY PRESS

世界建筑 12

World Architecture

Office Building

办公建筑设计 II

佳图文化 编



华南理工大学出版社
SOUTH CHINA UNIVERSITY OF TECHNOLOGY PRESS

·广州·

图书在版编目 (CIP) 数据

世界建筑 12. 办公建筑设计 II / 佳图文化编. —广州: 华南理工大学出版社, 2014. 1
ISBN 978-7-5623-4066-9

I. ①世… II. ①佳… III. ① 办公建筑 - 建筑设计 - 作品集 - 世界 IV. ① TU206

中国版本图书馆 CIP 数据核字 (2013) 第 237346 号

世界建筑 12: 办公建筑设计 II

佳图文化 编

出 版 人: 韩中伟

出版发行: 华南理工大学出版社
(广州五山华南理工大学 17 号楼, 邮编 510640)

<http://www.scutpress.com.cn> E-mail: scutc13@scut.edu.cn

营销部电话: 020-87113487 87111048 (传真)

策划编辑: 赖淑华

责任编辑: 赵宇星 庄彦 赖淑华

印 刷 者: 广州市中天彩色印刷有限公司

开 本: 889mm×1194mm 1/16 印张: 17

成品尺寸: 245mm×325mm

版 次: 2014 年 1 月第 1 版 2014 年 1 月第 1 次印刷

定 价: 298.00 元

版权所有 盗版必究 印装差错 负责调换

Preface

In this Latest collection, we select many excellent works about office building design from every corner of the world, which include high-rise office buildings, multi-storey office buildings and administrative office buildings. These office buildings are designed by world-famous design firms and architects of France, Germany, U.S.A, Italy, Austria, Spain, U.K, China and other areas. With professional design materials (sites, plans, sections, elevations, details, etc.), high-resolution photographs and clear descriptions, the collection well interprets every project from all the aspects which will surely bring some inspirations to our readers.

Contents

High-Rise Office Building

Naberezhnaya Office Towers	002
Tour First	008
Skalia	014
Greenwich Creekside	026
CMA CGM Tower	034

Multi-Storey Office Building

Tripode in Nantes	046
Office in Saint Denis	052
FECHAC Regional Office	058
Statoil Regional and International Office	066
Regional Headquarters and GIS Substation of EAC	076
Vertikala	084
Office Building in Maroussi	090
Renovation of Generali Building	096
The Quadrant:MK	110
La Forgiatura	124

Onix Office Building	134
Office Building ZAC Claude Bernard	144
Dell Headquarters, Montpellier	154
Faculty of Agriculture	162
New Generation Center	172
Headquarters Complex, IQ Farnborough	178
Al Dar Headquarters	186
Vanke One City	192

Administrative Office Building

Italian Ministry of Health New Headquarters	202
Forest Genomics and Ecologie Laboratories	208
I&TD Building	218
Languedoc-Roussillon Regional Council Offices	224
A. H. McCoy Federal Office	236
The Governmental City of the State of Zacatecas	242
Palace of Justice of Batumi	252

Vertical Scale
Exquisite Craftsmanship
Internationalization
Sustainability

Keywords

Sound-insulated Facade

Flexible Space

Humanized Design

Naberezhnaya Office Towers

Location: Moscow, Russia

Client: EnkaInsaatVeSanayi A.S.

Architectural Design: RTKL Associates Inc.

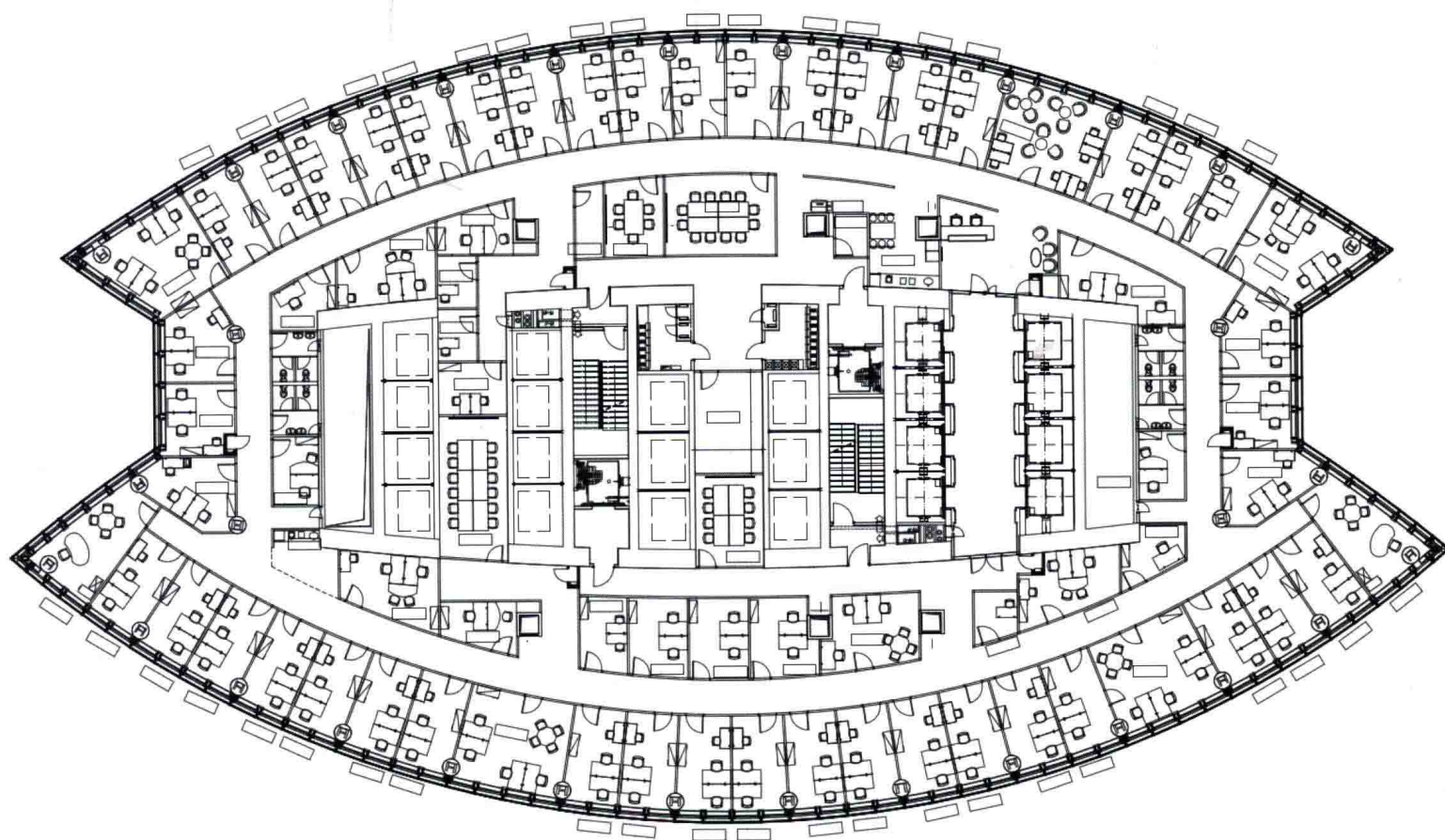
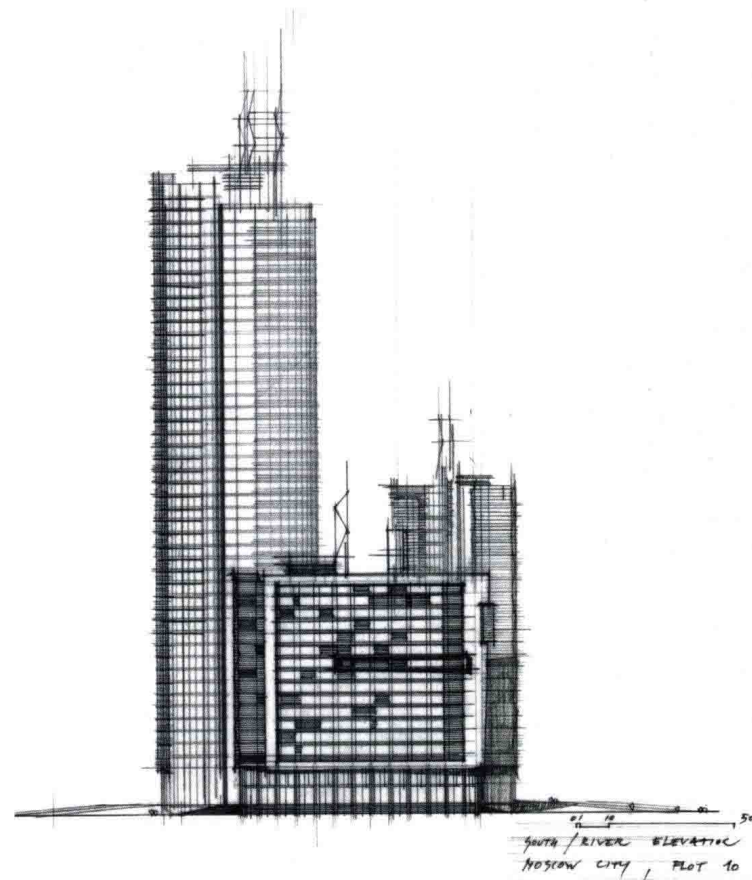
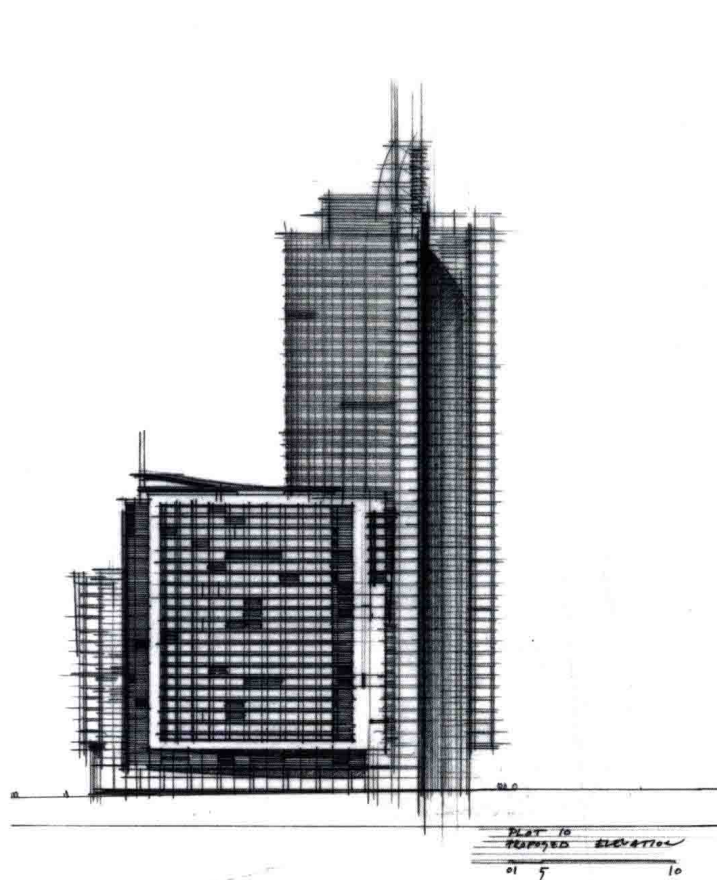
Area: 150,000 m²

Innovatively combining modern design and comfortable, functional space, Naberezhnaya Office Towers form a contemporary working environment that sets a new standard for today's Russian business centers.

ENKA, one of Moscow's most prestigious developers, set out to capitalize on rentable area in the heart of the city. The resulting project is comprised of three Class A office towers of 17, 27 and 57 storeies respectively. The towers feature high ceilings, flexible and open floor plates, and internal partitioning tailored to tenant requirements. Underground parking and a sound-insulated facade adapt to the challenges of the urban setting, and the varying building heights allow for spectacular views of the city center and the Moscow River. Occupants of the office buildings will enjoy convenient access to a transport system, a shopping mall and upscale residential options, making the facility not only a premium workplace but an integral element of Moscow's urban landscape.











Keywords

Low-energy Sustainable Landmark

Tour First

Location: Paris, France

Architectural Design: Kohn Pedersen Fox Associates (KPF)

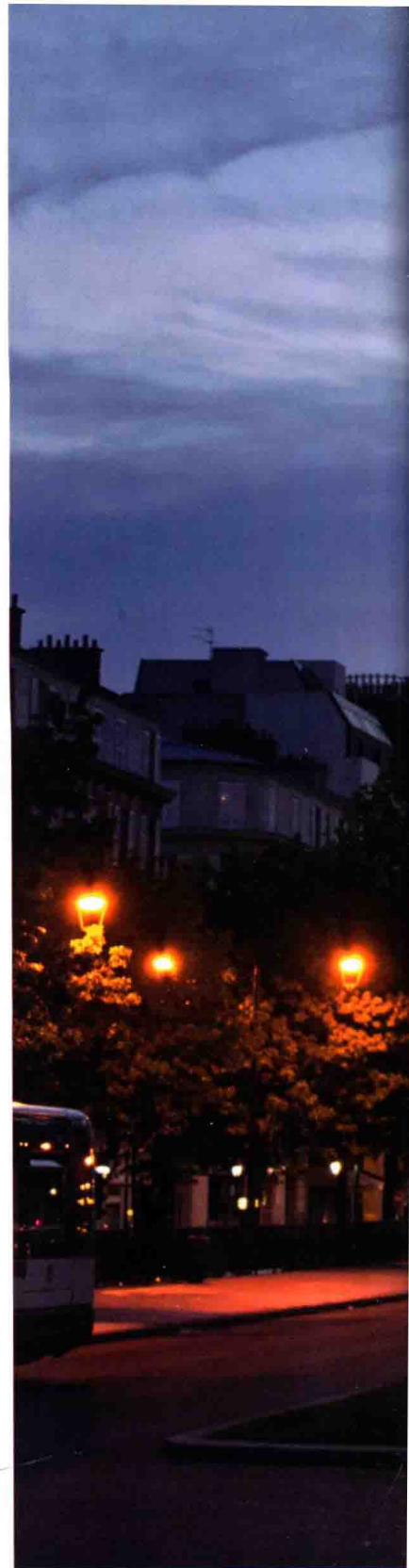
Photography: Hufton+Crow

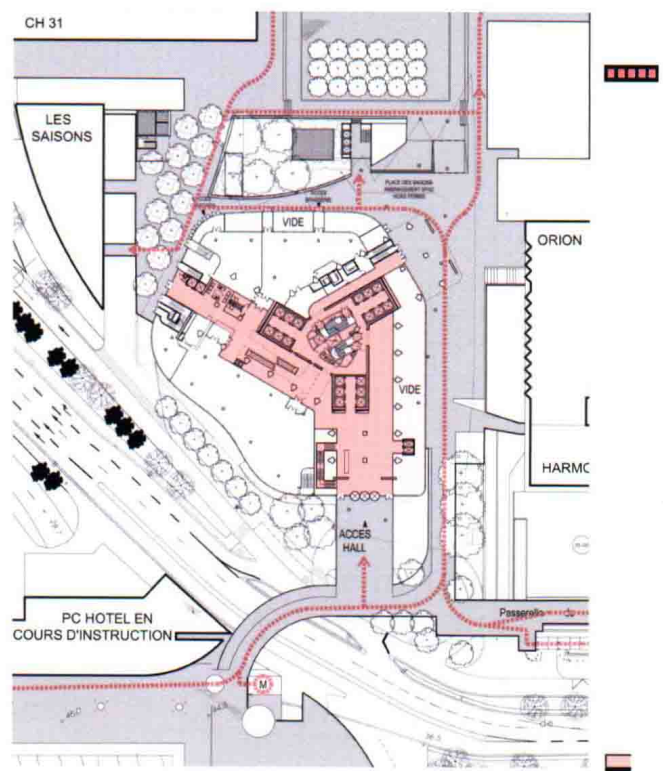
Located on a prominent site near the Neuilly Bridge, the building stands as a striking symbol to La Défense and a new landmark on the Paris skyline. Developed by AXA Real Estate IM, Beacon Capital Partners and ALTAREA-COGEDIM, Tour First, at 231 meters, is the tallest building in Paris and the tallest office building in France.

Tour First exemplifies KPF's dedication to the idea of refurbishment as a sustainable approach. In a world in which we are ever more conscious about sustainability in all walks of life, our decisions about buildings – their design, construction and management – are moving into sharper relief. For this reason, the benefits that can be realized from adaptive re-use of buildings, as opposed to demolition and replacement with new build, are rising up the agenda.

In the case of Tour First, KPF proposed the best course of action was a significant increase to the height of the 1970s tower designed by Pierre Dufau, while at the same time transforming its silhouette to create a new architectural statement and increased net area. The design incorporates new openings into the existing perimeter concrete structure to maximize daylight and views and, at the same time, transforms the internal office space. The design also serves to integrate the tower into the surrounding dense urban environment, improving the quality and accessibility of public areas, and strengthening the connection between the building and the Grand Esplanade located at the heart of La Défense.

Originally conceived as three identical wings around a central core, the refurbished tower retains the integrity of the original, while providing a modern interpretation of the concept and vastly improving the environmental performance and internal conditions and circulation. Tour First is the largest fully HQE certified office tower in France.





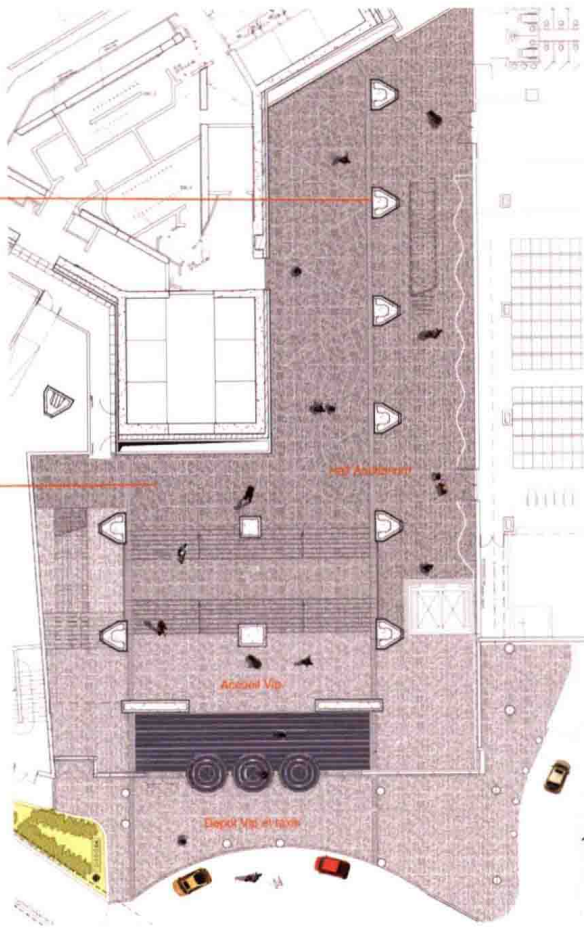
Site plan



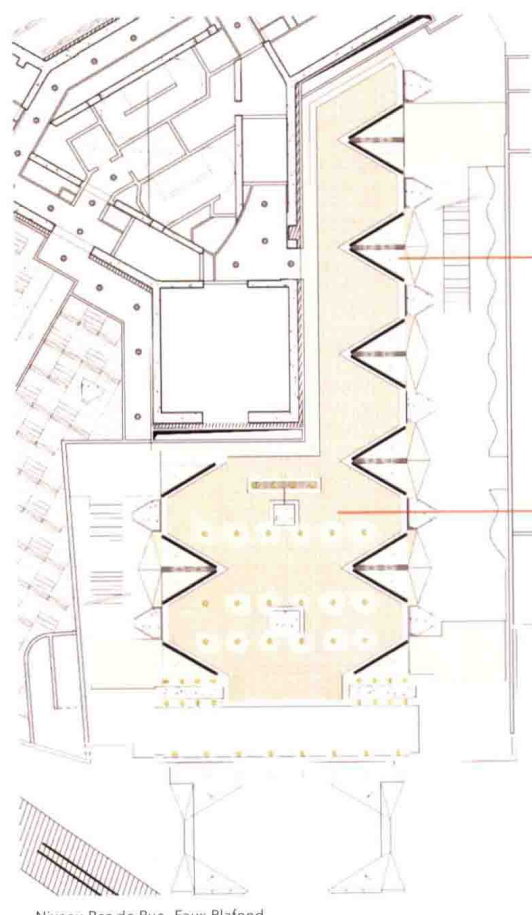
Eureka Marbre-adouci



Lce Blue Granit (adouci et flamme)



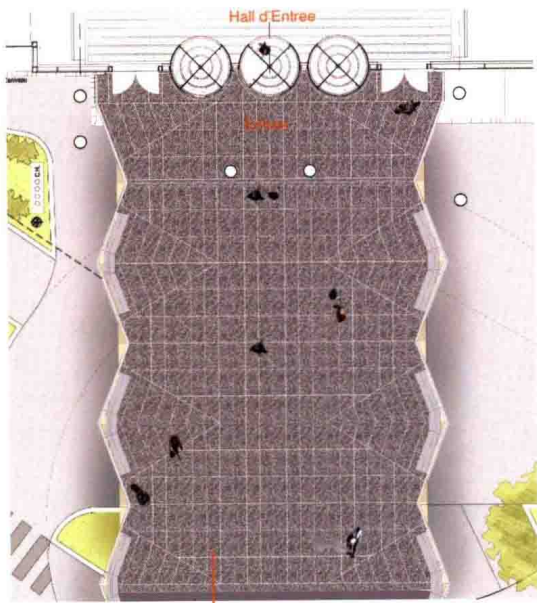
Niveau Rez de Rue - Plan



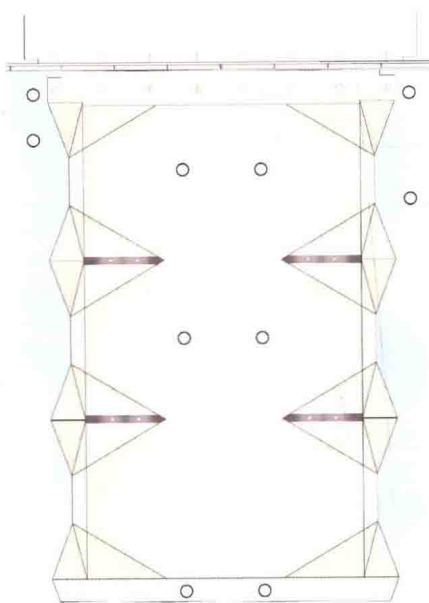
Niveau Rez de Rue - Faux Plafond

Plafond pli métallique peint

Plaque de plâtre perforée
peint de knauf



Plan



Faux Plafond



Lce Blue Granit



©2008 Defense-92.fr

Plans and Details



A tall, modern skyscraper at night, illuminated with blue and white lights. The building has a distinctive curved top and is surrounded by other city lights. The image is part of a book spread, with the page number 011 visible in the bottom right corner.