

# 中国人民银行统计季报

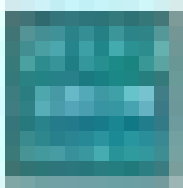
THE PEOPLE'S BANK OF CHINA QUARTERLY STATISTICAL BULLETIN

2013-3

总第71期

VOLUME LXXI

# 中國人民銀行研究報告



中國人民銀行

# 中国人民银行统计季报

THE PEOPLE'S BANK OF CHINA QUARTERLY STATISTICAL BULLETIN

2013-3  
总第71期  
VOLUME LXXI

责任编辑：贾 真

责任校对：刘 明

责任印制：裴 刚

### 图书在版编目 (CIP) 数据

中国人民银行统计季报. 2013 年第 3 期: 总第 71 期 / 中国人民银行调查统计司编. —北京: 中国金融出版社, 2013. 9  
ISBN 978-7-5049-6921-7

I. ①中… II. ①中… III. ①中国人民银行—统计资料—2013  
IV. ① F832. 31-66

中国版本图书馆 CIP 数据核字 (2013) 第 070212 号

出 版 中国金融出版社  
发 行  
社 址 北京市丰台区益泽路 2 号  
发行部 (010) 66012726  
邮 编 100071  
经 销 新华书店  
印 刷 北京侨友印刷有限公司  
尺 寸 210 毫米 × 285 毫米  
印 张 7.25  
字 数 212 千  
版 次 2013 年 9 月第 1 版  
印 次 2013 年 9 月第 1 次印刷  
定 价 98.00 元

ISBN 978-7-5049-6921-7/F . 6481

如出现印装错误本社负责调换 联系电话 (010) 63263947

|      |                         |        |
|------|-------------------------|--------|
| 1    | 主要经济指标概览                | 4-7    |
| 2    | 金融机构货币统计                | 8-55   |
| 2.1  | 主要金融指标                  | 8      |
| 2.2  | 主要金融指标(消除季节因素)          | 9      |
| 2.3  | 社会融资规模统计表               | 10     |
| 2.4  | 金融机构信贷收支表(人民币)          | 14     |
| 2.5  | 存款性公司概览                 | 16     |
| 2.6  | 货币当局资产负债表               | 20     |
| 2.7  | 其他存款性公司资产负债表            | 24     |
| 2.8  | 中资大型银行资产负债表(自2009年12月始) | 28     |
| 2.9  | 中资中型银行资产负债表(自2009年12月始) | 32     |
| 2.10 | 中资小型银行资产负债表(自2009年12月始) | 36     |
| 2.11 | 外资银行资产负债表               | 40     |
| 2.12 | 城市信用社资产负债表              | 44     |
| 2.13 | 农村信用社资产负债表              | 48     |
| 2.14 | 财务公司资产负债表               | 52     |
| 3    | 宏观经济金融运行监测              | 56-59  |
| 3.1  | 金融统计数据报告                | 56     |
| 3.2  | 景气状况分析:2013年二季度         | 58     |
| 3.3  | 宏观经济                    | 59     |
| 4    | 金融市场统计                  | 60-72  |
| 4.1  | 全国银行间同业拆借交易统计表          | 60     |
| 4.2  | 全国银行间质押式回购交易统计表         | 64     |
| 4.3  | 国内各类债券发行统计表             | 68     |
| 4.4  | 国内各类债券余额统计表             | 69     |
| 4.5  | 人民币汇率统计表                | 70     |
| 4.6  | 国内股票市场统计表               | 72     |
| 5    | 利率                      | 73-75  |
| 5.1  | 中央银行基准利率                | 73     |
| 5.2  | 金融机构:人民币法定存款基准利率        | 74     |
| 5.3  | 金融机构:人民币法定贷款基准利率        | 75     |
| 6    | 资金流量表(金融交易账户)           | 76-81  |
| 6.1  | 2009年资金流量表(金融交易账户)      | 76     |
| 6.2  | 2010年资金流量表(金融交易账户)      | 78     |
| 6.3  | 2011年资金流量表(金融交易账户)      | 80     |
| 7    | 经济调查                    | 82-85  |
| 7.1  | 5000户企业主要财务指标           | 82     |
| 7.2  | 5000户企业主要财务分析指标         | 84     |
| 7.3  | 5000户企业景气扩散指数           | 85     |
| 8    | 物价统计                    | 86-87  |
| 8.1  | 主要物价指数                  | 86     |
| 8.2  | 企业商品价格指数                | 87     |
| 9    | 主要经济金融指标图               | 88-94  |
| 10   | 主要指标的概念及定义              | 95-114 |

# 目 录

## Contents

|      |   |        |
|------|---|--------|
| 1    | Survey of Major Economic Indicators                                 | 4-7    |
| 2    | Monetary Statistics of Financial Institutions                       | 8-55   |
| 2.1  | Major Financial Indicators  | 8      |
| 2.2  | Major Financial Indicators (Seasonally Adjusted)                    | 9      |
| 2.3  | Statistics of Aggregate Financing of the Economy                    | 10     |
| 2.4  | Sources and Uses of Credit Funds of Financial Institutions (RMB)    | 14     |
| 2.5  | Depository Corporations Survey                                      | 16     |
| 2.6  | Balance Sheet of Monetary Authority                                 | 20     |
| 2.7  | Balance Sheet of Other Depository Corporations                      | 24     |
| 2.8  | Balance Sheet of Large-sized Domestic Banks (Since December 2009)   | 28     |
| 2.9  | Balance Sheet of Medium-sized Domestic Banks (Since December 2009)  | 32     |
| 2.10 | Balance Sheet of Small-sized Domestic Banks (Since December 2009)   | 36     |
| 2.11 | Balance Sheet of Foreign-funded Banks                               | 40     |
| 2.12 | Balance Sheet of Urban Credit Cooperatives                          | 44     |
| 2.13 | Balance Sheet of Rural Credit Cooperatives                          | 48     |
| 2.14 | Balance Sheet of Finance Companies                                  | 52     |
| 3    | Macroeconomic & Financial Situation                                 | 56-59  |
| 3.1  | Financial Statistics Data Report                                    | 57     |
| 3.2  | Business Climate Analysis: 2013 Q2                                  | 58     |
| 3.3  | Macroeconomics  | 59     |
| 4    | Financial Market Statistics   | 60-72  |
| 4.1  | Statistics of Interbank Lending                                     | 60     |
| 4.2  | Statistics of Interbank Pledged Repo                                | 64     |
| 4.3  | Statistics of Debt Securities Issue                                 | 68     |
| 4.4  | Statistics of Debt Securities Outstanding                           | 69     |
| 4.5  | Statistics of Exchange Rate   | 70     |
| 4.6  | Statistics of Stock Market  | 72     |
| 5    | Interest Rates  | 73-75  |
| 5.1  | Benchmark Interest Rates of Central Bank                            | 73     |
| 5.2  | Financial Institutions: Official Benchmark Rates of RMB Deposits    | 74     |
| 5.3  | Financial Institutions: Official Benchmark Rates of RMB Loans       | 75     |
| 6    | Flow of Funds Statement(Financial Transactions Accounts)            | 76-81  |
| 6.1  | Flow of Funds Statement, 2009(Financial Transactions Accounts)      | 76     |
| 6.2  | Flow of Funds Statement, 2010(Financial Transactions Accounts)      | 78     |
| 6.3  | Flow of Funds Statement, 2011(Financial Transactions Accounts)      | 80     |
| 7    | Economic Research   | 82-85  |
| 7.1  | Major Financial Indicators of 5000 Principal Enterprises            | 82     |
| 7.2  | Major Financial Analytical Indicators of 5000 Principal Enterprises | 84     |
| 7.3  | Diffusion Indices of Business Survey of 5000 Principal Enterprises  | 85     |
| 8    | Price Statistics  | 86-87  |
| 8.1  | Major Price Indices   | 86     |
| 8.2  | Corporate Goods Price Indices(CGPI)                                 | 87     |
| 9    | Charts of Major Economic & Financial Indicators                     | 88-94  |
| 10   | Concepts and Definitions for Major Indicators                       | 95-114 |

# 中国人民银行统计季报

THE PEOPLE'S BANK OF CHINA QUARTERLY STATISTICAL BULLETIN

2013-3  
总第71期  
VOLUME LXXI

|      |                         |        |
|------|-------------------------|--------|
| 1    | 主要经济指标概览                | 4-7    |
| 2    | 金融机构货币统计                | 8-55   |
| 2.1  | 主要金融指标                  | 8      |
| 2.2  | 主要金融指标(消除季节因素)          | 9      |
| 2.3  | 社会融资规模统计表               | 10     |
| 2.4  | 金融机构信贷收支表(人民币)          | 14     |
| 2.5  | 存款性公司概览                 | 16     |
| 2.6  | 货币当局资产负债表               | 20     |
| 2.7  | 其他存款性公司资产负债表            | 24     |
| 2.8  | 中资大型银行资产负债表(自2009年12月始) | 28     |
| 2.9  | 中资中型银行资产负债表(自2009年12月始) | 32     |
| 2.10 | 中资小型银行资产负债表(自2009年12月始) | 36     |
| 2.11 | 外资银行资产负债表               | 40     |
| 2.12 | 城市信用社资产负债表              | 44     |
| 2.13 | 农村信用社资产负债表              | 48     |
| 2.14 | 财务公司资产负债表               | 52     |
| 3    | 宏观经济金融运行监测              | 56-59  |
| 3.1  | 金融统计数据报告                | 56     |
| 3.2  | 景气状况分析:2013年二季度         | 58     |
| 3.3  | 宏观经济                    | 59     |
| 4    | 金融市场统计                  | 60-72  |
| 4.1  | 全国银行间同业拆借交易统计表          | 60     |
| 4.2  | 全国银行间质押式回购交易统计表         | 64     |
| 4.3  | 国内各类债券发行统计表             | 68     |
| 4.4  | 国内各类债券余额统计表             | 69     |
| 4.5  | 人民币汇率统计表                | 70     |
| 4.6  | 国内股票市场统计表               | 72     |
| 5    | 利率                      | 73-75  |
| 5.1  | 中央银行基准利率                | 73     |
| 5.2  | 金融机构:人民币法定存款基准利率        | 74     |
| 5.3  | 金融机构:人民币法定贷款基准利率        | 75     |
| 6    | 资金流量表(金融交易账户)           | 76-81  |
| 6.1  | 2009年资金流量表(金融交易账户)      | 76     |
| 6.2  | 2010年资金流量表(金融交易账户)      | 78     |
| 6.3  | 2011年资金流量表(金融交易账户)      | 80     |
| 7    | 经济调查                    | 82-85  |
| 7.1  | 5000户企业主要财务指标           | 82     |
| 7.2  | 5000户企业主要财务分析指标         | 84     |
| 7.3  | 5000户企业景气扩散指数           | 85     |
| 8    | 物价统计                    | 86-87  |
| 8.1  | 主要物价指数                  | 86     |
| 8.2  | 企业商品价格指数                | 87     |
| 9    | 主要经济金融指标图               | 88-94  |
| 10   | 主要指标的概念及定义              | 95-114 |



# 目 录

## Contents

|      |   |        |
|------|---|--------|
| 1    | Survey of Major Economic Indicators                                 | 4-7    |
| 2    | Monetary Statistics of Financial Institutions                       | 8-55   |
| 2.1  | Major Financial Indicators  | 8      |
| 2.2  | Major Financial Indicators (Seasonally Adjusted)                    | 9      |
| 2.3  | Statistics of Aggregate Financing of the Economy                    | 10     |
| 2.4  | Sources and Uses of Credit Funds of Financial Institutions (RMB)    | 14     |
| 2.5  | Depository Corporations Survey                                      | 16     |
| 2.6  | Balance Sheet of Monetary Authority                                 | 20     |
| 2.7  | Balance Sheet of Other Depository Corporations                      | 24     |
| 2.8  | Balance Sheet of Large-sized Domestic Banks (Since December 2009)   | 28     |
| 2.9  | Balance Sheet of Medium-sized Domestic Banks (Since December 2009)  | 32     |
| 2.10 | Balance Sheet of Small-sized Domestic Banks (Since December 2009)   | 36     |
| 2.11 | Balance Sheet of Foreign-funded Banks                               | 40     |
| 2.12 | Balance Sheet of Urban Credit Cooperatives                          | 44     |
| 2.13 | Balance Sheet of Rural Credit Cooperatives                          | 48     |
| 2.14 | Balance Sheet of Finance Companies                                  | 52     |
| 3    | Macroeconomic & Financial Situation                                 | 56-59  |
| 3.1  | Financial Statistics Data Report                                    | 57     |
| 3.2  | Business Climate Analysis: 2013 Q2                                  | 58     |
| 3.3  | Macroeconomics  | 59     |
| 4    | Financial Market Statistics   | 60-72  |
| 4.1  | Statistics of Interbank Lending                                     | 60     |
| 4.2  | Statistics of Interbank Pledged Repo                                | 64     |
| 4.3  | Statistics of Debt Securities Issue                                 | 68     |
| 4.4  | Statistics of Debt Securities Outstanding                           | 69     |
| 4.5  | Statistics of Exchange Rate   | 70     |
| 4.6  | Statistics of Stock Market  | 72     |
| 5    | Interest Rates  | 73-75  |
| 5.1  | Benchmark Interest Rates of Central Bank                            | 73     |
| 5.2  | Financial Institutions: Official Benchmark Rates of RMB Deposits    | 74     |
| 5.3  | Financial Institutions: Official Benchmark Rates of RMB Loans       | 75     |
| 6    | Flow of Funds Statement(Financial Transactions Accounts)            | 76-81  |
| 6.1  | Flow of Funds Statement, 2009(Financial Transactions Accounts)      | 76     |
| 6.2  | Flow of Funds Statement, 2010(Financial Transactions Accounts)      | 78     |
| 6.3  | Flow of Funds Statement, 2011(Financial Transactions Accounts)      | 80     |
| 7    | Economic Research   | 82-85  |
| 7.1  | Major Financial Indicators of 5000 Principal Enterprises            | 82     |
| 7.2  | Major Financial Analytical Indicators of 5000 Principal Enterprises | 84     |
| 7.3  | Diffusion Indices of Business Survey of 5000 Principal Enterprises  | 85     |
| 8    | Price Statistics  | 86-87  |
| 8.1  | Major Price Indices   | 86     |
| 8.2  | Corporate Goods Price Indices(CGPI)                                 | 87     |
| 9    | Charts of Major Economic & Financial Indicators                     | 88-94  |
| 10   | Concepts and Definitions for Major Indicators                       | 95-114 |

## 1 主要经济指标

## Major Economic Indicators

单位: 亿元  
Unit: 100 Million Yuan

|         | 国内生产总值*<br>(现价)<br>Gross<br>Domestic<br>Product*<br>(Current Price) | 第一产业<br>Primary<br>Industry | 第二产业<br>Secondary<br>Industry | 第三产业<br>Tertiary<br>Industry |
|---------|---|-----------------------------|-------------------------------|------------------------------|
| 2006    | 216314  | 24040                       | 103720                        | 88555                        |
| 2007    | 265810  | 28627                       | 125831                        | 111352                       |
| 2008    | 314045  | 33702                       | 149003                        | 131340                       |
| 2009    | 340903  | 35226                       | 157639                        | 148038                       |
| 2010    | 401513  | 40534                       | 187383                        | 173596                       |
| 2011.01 |   |                             |                               |                              |
| 2011.02 |   |                             |                               |                              |
| 2011.03 | 97480   | 5952                        | 46944                         | 44584                        |
| 2011.04 |   |                             |                               |                              |
| 2011.05 |   |                             |                               |                              |
| 2011.06 | 206488  | 15626                       | 102527                        | 88336                        |
| 2011.07 |   |                             |                               |                              |
| 2011.08 |   |                             |                               |                              |
| 2011.09 | 322345  | 30196                       | 154552                        | 137596                       |
| 2011.10 |   |                             |                               |                              |
| 2011.11 |   |                             |                               |                              |
| 2011.12 | 473104  | 47486                       | 220413                        | 205205                       |
| 2012.01 |   |                             |                               |                              |
| 2012.02 |   |                             |                               |                              |
| 2012.03 | 108486  | 6922                        | 51413                         | 50151                        |
| 2012.04 |   |                             |                               |                              |
| 2012.05 |   |                             |                               |                              |
| 2012.06 | 228035  | 17471                       | 110864                        | 99700                        |
| 2012.07 |   |                             |                               |                              |
| 2012.08 |   |                             |                               |                              |
| 2012.09 | 353724  | 33088                       | 165429                        | 155207                       |
| 2012.10 |   |                             |                               |                              |
| 2012.11 |   |                             |                               |                              |
| 2012.12 | 519322  | 52377                       | 235319                        | 231627                       |
| 2013.01 |   |                             |                               |                              |
| 2013.02 |   |                             |                               |                              |
| 2013.03 | 118855  | 7427                        | 54569                         | 56859                        |
| 2013.04 |   |                             |                               |                              |
| 2013.05 |   |                             |                               |                              |
| 2013.06 | 248009  | 18622                       | 117037                        | 112350                       |

\* 季度国内生产总值为当年累计数。

\* The quarterly data for GDP are grand totals of current year.

## 1.2 主要经济指标

## Major Economic Indicators

单位: %

Unit: %

|         | 国内生产总值*                 |                          |                            | 工业增加值**                   |                          |  |                                |  |
|---------|-------------------------|--------------------------|----------------------------|---------------------------|--------------------------|--|--------------------------------|--|
|         | Gross Domestic Product* | 第一产业<br>Primary Industry | 第二产业<br>Secondary Industry | 第三产业<br>Tertiary Industry | Industrial Value-added** | 国有及国有控股企业<br>State-owned and State-holding Enterprises | 集体企业<br>Collective Enterprises | 外商及港澳台投资企业<br>Foreign-funded Enterprises |
| 2006    | 12.7                    | 5.0                      | 13.4                       | 14.1                      | 16.6                     | 12.6   | 11.6                           | 16.9                                     |
| 2007    | 14.2                    | 3.7                      | 15.1                       | 16.0                      | 18.5                     | 13.8   | 11.5                           | 17.5                                     |
| 2008    | 9.6                     | 5.4                      | 9.9                        | 10.4                      | 12.9                     | 9.1  | 8.1                            | 9.9                                      |
| 2009    | 9.2                     | 4.2                      | 9.9                        | 9.6                       | 18.5                     | 21.7   | 15.7                           | 15.7                                     |
| 2010    | 10.4                    | 4.3                      | 12.3                       | 9.8                       | 13.5                     | 9.8  | 7.9                            | 11.4                                     |
| 2011.01 |                         |                          |                            |                           |                          |  |                                |  |
| 2011.02 |                         |                          |                            |                           | 14.9                     | 10.5   | 11.7                           | 12.2                                     |
| 2011.03 | 9.8                     | 3.5                      | 10.8                       | 9.7                       | 14.8                     | 12.9   | 8.9                            | 11.6                                     |
| 2011.04 |                         |                          |                            |                           | 13.4                     | 10.4   | 8.1                            | 9.7                                      |
| 2011.05 |                         |                          |                            |                           | 13.3                     | 8.9  | 9.5                            | 9.5                                      |
| 2011.06 | 9.7                     | 3.0                      | 10.6                       | 9.7                       | 15.1                     | 10.7   | 11.2                           | 11.3                                     |
| 2011.07 |                         |                          |                            |                           | 14.1                     | 9.5  | 9.2                            | 10.6                                     |
| 2011.08 |                         |                          |                            |                           | 13.5                     | 9.4  | 8.7                            | 10.0                                     |
| 2011.09 | 9.5                     | 3.6                      | 10.6                       | 9.5                       | 13.8                     | 9.9  | 7.2                            | 10.1                                     |
| 2011.10 |                         |                          |                            |                           | 13.2                     | 8.9  | 9.2                            | 9.6                                      |
| 2011.11 |                         |                          |                            |                           | 12.4                     | 7.8  | 6.8                            | 8.4                                      |
| 2011.12 | 9.3                     | 4.3                      | 10.3                       | 9.4                       | 12.8                     | 9.2  | 11.4                           | 8.7                                      |
| 2012.01 |                         |                          |                            |                           |                          |  |                                |  |
| 2012.02 |                         |                          |                            |                           | 21.3                     | 14.7   | 15.8                           | 17.1                                     |
| 2012.03 | 8.1                     | 3.8                      | 9.1                        | 7.5                       | 11.9                     | 8.0  | 9.3                            | 8.2                                      |
| 2012.04 |                         |                          |                            |                           | 9.3                      | 4.3  | 6.6                            | 5.7                                      |
| 2012.05 |                         |                          |                            |                           | 9.6                      | 6.6  | 6.4                            | 6.7                                      |
| 2012.06 | 7.8                     | 4.3                      | 8.3                        | 7.8                       | 9.5                      | 6.5  | 7.4                            | 5.5                                      |
| 2012.07 |                         |                          |                            |                           | 9.2                      | 4.8  | 7.1                            | 5.3                                      |
| 2012.08 |                         |                          |                            |                           | 8.9                      | 5.3  | 6.6                            | 5.0                                      |
| 2012.09 | 7.7                     | 4.2                      | 8.1                        | 7.9                       | 9.2                      | 6.3  | 7.0                            | 5.3                                      |
| 2012.10 |                         |                          |                            |                           | 9.6                      | 7.0  | 5.1                            | 4.7                                      |
| 2012.11 |                         |                          |                            |                           | 10.1                     | 7.2  | 6.5                            | 6.5                                      |
| 2012.12 | 7.8                     | 4.5                      | 8.1                        | 8.1                       | 10.3                     | 8.0  | 5.2                            | 6.9                                      |
| 2013.01 |                         |                          |                            |                           |                          |  |                                |  |
| 2013.02 |                         |                          |                            |                           |                          |  |                                |  |
| 2013.03 | 7.7                     | 3.4                      | 7.8                        | 8.3                       | 8.9                      | 4.3  | 5.8                            | 6.1                                      |
| 2013.04 |                         |                          |                            |                           | 9.3                      | 4.3  | 5.7                            | 7.4                                      |
| 2013.05 |                         |                          |                            |                           | 9.2                      | 4.4  | 4.0                            | 8.1                                      |
| 2013.06 | 7.6                     | 3.0                      | 7.6                        | 8.3                       | 8.9                      | 6.3  | 1.7                            | 7.8                                      |

\* 国内生产总值累计增长率和工业增加值当月增长率按可比价格计算。

\* The growth rates of accumulative GDP and the growth rates of monthly industrial value-added are calculated on the basis of comparable price.

\*\* 工业增加值口径自 2011 年起改为年主营业务收入 2000 万元及以上的工业企业。

\*\* The industrial value-added has been adjusted to industrial enterprises with the annual sales income from main business over 20 million yuan since 2011.

## 1.3 主要经济指标

## Major Economic Indicators

单位: 亿元

Unit: 100 Million Yuan

|         | 固定资产投资 (不含农户) *   |   |                                     | 消费品零售额 **<br>Retail Sales** |
|---------|---|---|-------------------------------------|-----------------------------|
|         | Fixed Assets<br>Investment in<br>(Excluding Rural Households) * | 国有及国有控股<br>State-owned and<br>State-holding Units | 房地产开发<br>Real Estate<br>Development |                             |
| 2006    | 93369   | 45212   | 19423                               | 76410                       |
| 2007    | 117465  | 52293   | 25289                               | 89210                       |
| 2008    | 148738  | 64132   | 31203                               | 108488                      |
| 2009    | 193920  | 86536   | 36242                               | 12610                       |
| 2010    | 241415  | 102130  | 48267                               | 15330                       |
| 2011.01 |   |   |                                     | 15249                       |
| 2011.02 | 17444   | 6435  | 4250                                | 13769                       |
| 2011.03 | 39465   | 13829   | 8846                                | 13588                       |
| 2011.04 | 62716   | 22037   | 13340                               | 13649                       |
| 2011.05 | 90255   | 31497   | 18737                               | 14697                       |
| 2011.06 | 124567  | 43050   | 26250                               | 14565                       |
| 2011.07 | 152420  | 52752   | 31873                               | 14408                       |
| 2011.08 | 180608  | 62422   | 37781                               | 14705                       |
| 2011.09 | 212274  | 73481   | 44225                               | 15865                       |
| 2011.10 | 241365  | 83938   | 49923                               | 16546                       |
| 2011.11 | 269452  | 93894   | 55483                               | 16129                       |
| 2011.12 | 301933  | 107486  | 61740                               | 17740                       |
| 2012.01 |   |   |                                     |                             |
| 2012.02 | 21189   | 6999  | 5431                                | 16447                       |
| 2012.03 | 47865   | 15191   | 10927                               | 15650                       |
| 2012.04 | 75592   | 24300   | 15835                               | 15603                       |
| 2012.05 | 108924  | 35082   | 22213                               | 16715                       |
| 2012.06 | 150710  | 48986   | 30610                               | 16585                       |
| 2012.07 | 184312  | 60069   | 36774                               | 16315                       |
| 2012.08 | 217958  | 71229   | 43688                               | 16659                       |
| 2012.09 | 256933  | 84444   | 51046                               | 18227                       |
| 2012.10 | 292543  | 96891   | 57629                               | 18934                       |
| 2012.11 | 326236  | 108362  | 64772                               | 18477                       |
| 2012.12 | 364835  | 123694  | 71804                               | 20334                       |
| 2013.01 |   |   |                                     |                             |
| 2013.02 | 25676   | 8183  | 6670                                |                             |
| 2013.03 | 58092   | 18029   | 13133                               | 17641                       |
| 2013.04 | 91319   | 28701   | 19180                               | 17600                       |
| 2013.05 | 131211  | 41161   | 26798                               | 18886                       |
| 2013.06 | 181318  | 57342   | 36828                               | 18827                       |

\* 自2011年起, 投资项目统计起点标准由原来的50万元调整为500万元。“固定资产投资”(不含农户)等于原口径的“城镇固定资产投资”加上“农村企事业组织项目投资”。

\* Since 2011, investment indicators are calculated using new threshold criteria of 5 million yuan instead of 500 thousand yuan in the past. “Fixed Assets Investment” (Excluding Rural Households) equals to “Fixed Assets Investment in Urban Area” under the old criteria plus “Investment of Rural Enterprises and Institutions”.

\*\* 自2010年1月起, “社会消费品零售总额”采用新的分组替代原来的分组。

\*\* Since Jan. 2010, “Total Retail Sales of Consumer Goods” adopted new categories.

## 1.4 主要经济指标

## Major Economic Indicators

单位: 亿美元(除另注明外)

Unit: 100 Million USD (unless noted otherwise)

|         | 人均收入<br>(单位: 元人民币) (Unit: RMB Yuan)                   |  | 进出口总值<br>Trade |         |         | 贸易差额<br>Trade<br>Balance | 外商直接投资*<br>Foreign<br>Direct<br>Investment* | 外汇储备*<br>Foreign<br>Exchange<br>Reserves* |
|---------|---|--|----------------|---------|---------|--------------------------|---|---|
|         | 城镇居民可支配收入<br>Disposable Income<br>of Urban Households | 农村居民现金收入**<br>Cash Income of<br>Rural Households** | Volume         | 出口      | 进口      |                          |   |   |
|         |   |  |                | Export  | Import  |                          |   |   |
| 2006    | 11759.5   | 3587.0   | 17604.4        | 9689.7  | 7914.6  | 1775.2                   | 630.2                                       | 10663.4                                   |
| 2007    | 13785.8   | 4140.4   | 21765.7        | 12204.6 | 9561.2  | 2643.4                   | 747.7                                       | 15282.5                                   |
| 2008    | 15781.0   | 4760.6   | 25632.6        | 14306.9 | 11325.7 | 2981.2                   | 924.0                                       | 19460.3                                   |
| 2009    | 17175.0   | 5153.2   | 22075.4        | 12016.1 | 10059.2 | 1956.9                   | 900.3                                       | 23991.5                                   |
| 2010    | 19109.0   | 5919.0   | 2955.9         | 1541.0  | 1414.9  | 126.1                    | 1057.4                                      | 28473                                     |
| 2011.01 |   |  | 2956.1         | 1507.0  | 1449.2  | 57.8                     | 100.3                                       | 29317                                     |
| 2011.02 |   |  | 2012.4         | 966.8   | 1045.5  | -78.7                    | 178.2                                       | 29914                                     |
| 2011.03 | 5963  | 2187   | 3044.6         | 1521.3  | 1523.2  | -1.9                     | 303.4                                       | 30447                                     |
| 2011.04 |   |  | 2999.6         | 1555.9  | 1443.7  | 112.2                    | 388.0                                       | 31458                                     |
| 2011.05 |   |  | 3011.7         | 1570.5  | 1441.2  | 129.3                    | 480.3                                       | 31660                                     |
| 2011.06 | 11041   | 3706   | 3016.0         | 1619.0  | 1397.0  | 221.9                    | 608.9                                       | 31975                                     |
| 2011.07 |   |  | 3201.7         | 1751.5  | 1450.2  | 301.4                    | 691.9                                       | 32453                                     |
| 2011.08 |   |  | 3286.2         | 1732.4  | 1553.8  | 178.6                    | 776.3                                       | 32625                                     |
| 2011.09 | 16301   | 5875   | 3245.7         | 1695.8  | 1549.9  | 145.9                    | 866.8                                       | 32017                                     |
| 2011.10 |   |  | 2975.7         | 1573.5  | 1402.2  | 171.3                    | 950.1                                       | 32738                                     |
| 2011.11 |   |  | 3341.1         | 1743.9  | 1597.2  | 146.6                    | 1037.7                                      | 32209                                     |
| 2011.12 | 21810   | 6977   | 3327.9         | 1746.2  | 1581.6  | 164.6                    | 1160.1                                      | 31811                                     |
| 2012.01 |   |  | 2726.9         | 1498.6  | 1228.2  | 270.4                    | 100.0                                       | 32536                                     |
| 2012.02 |   |  | 2608.1         | 1144.1  | 1464.0  | -319.9                   | 177.2                                       | 33097                                     |
| 2012.03 | 6796  | 2560   | 3259.8         | 1655.8  | 1604.0  | 51.8                     | 294.8                                       | 33050                                     |
| 2012.04 |   |  | 3077.1         | 1631.3  | 1445.8  | 185.5                    | 378.8                                       | 32989                                     |
| 2012.05 |   |  | 3438.9         | 1810.3  | 1628.6  | 181.8                    | 471.1                                       | 32061                                     |
| 2012.06 | 12509   | 4303   | 3280.2         | 1798.4  | 1481.9  | 316.5                    | 591.0                                       | 32400                                     |
| 2012.07 |   |  | 3285.5         | 1769.2  | 1516.3  | 252.9                    | 666.7                                       | 32400                                     |
| 2012.08 |   |  | 3293.3         | 1778.7  | 1514.6  | 264.2                    | 749.9                                       | 32729                                     |
| 2012.09 | 18427   | 6778   | 3447.6         | 1861.2  | 1586.4  | 274.9                    | 834.2                                       | 32851                                     |
| 2012.10 |   |  | 3189.8         | 1755.3  | 1434.5  | 320.8                    | 917.4                                       | 32874                                     |
| 2012.11 |   |  | 3391.7         | 1793.5  | 1598.2  | 195.4                    | 1000.2                                      | 32977                                     |
| 2012.12 | 24565   | 7917   | 3671.0         | 1991.4  | 1679.6  | 311.8                    | 1117.2                                      | 33116                                     |
| 2013.01 | —   | —  | 3458.4         | 1873.5  | 1584.9  | 288.6                    | 92.7  | 34101                                     |
| 2013.02 | —   | —  | 2635.1         | 1393.7  | 1241.4  | 152.3                    | 174.8                                       | 33954                                     |
| 2013.03 | 7427  | 2871   | 3652.6         | 1821.9  | 1830.7  | -8.8                     | 299.1                                       | 34426                                     |
| 2013.04 | —   | —  | 3559.1         | 1870.2  | 1688.9  | 181.4                    | 383.4                                       | 35345                                     |
| 2013.05 | —   | —  | 3451.1         | 1827.7  | 1623.4  | 204.2                    | 476.0                                       | 35148                                     |
| 2013.06 | 13649   | 4817   | 3215.1         | 1743.2  | 1471.9  | 271.3                    | 619.8                                       | 34967                                     |

\* 月度外商直接投资为累计数。外汇储备为余额数。

\* Monthly data for Foreign Direct Investment are grand totals. Data for Foreign Exchange Reserves are outstanding amounts.

\*\* 人均收入数据为累计数据。农村居民收入数据中, 前三个季度数据为农村居民现金收入, 四季度数据为农村居民家庭人均纯收入。年度数据为当年四季度数据。

\*\* The data for income per capita are grand totals. As income data of rural households, the data for the first 3 quarters every year are cash income of rural households, and the data for the 4<sup>th</sup> quarter are net income of rural households. Annual data are the data for the 4<sup>th</sup> quarter that year.

## 2.1 主要金融指标

## Major Financial Indicators

单位: 亿元

Unit: 100 Million Yuan

|         | 社会融资规模<br>Aggregate Financing to<br>the Real Economy(AFRE) | M2       | M1       | M0      | 金融机构人民币各项存款<br>Total Deposits by All<br>Financial Institutions |          | 金融机构人民币各项贷款<br>Total Loans by All<br>Financial Institutions |
|---------|--|----------|----------|---------|--|----------|---|
|         |  |          |          |         | 储蓄存款*<br>Savings Deposits*                                     |          |   |
| 2006    | 42696  | 345603.6 | 126035.1 | 27072.6 | 335459.8   | 161587.3 | 225347.2  |
| 2007    | 59663  | 403442.2 | 152560.1 | 30375.2 | 389371.2   | 172534.2 | 261690.9  |
| 2008    | 69802  | 425166.6 | 166217.1 | 34219.0 | 466203.3   | 217885.4 | 303394.6  |
| 2009    | 139104   | 610224.5 | 221445.8 | 38247.0 | 597741.1   | 260771.7 | 399684.8  |
| 2010    | 140191   | 725851.8 | 266621.5 | 44628.2 | 718237.9   | 303302.5 | 479195.6  |
| 2011.01 |  | 733884.8 | 261765.0 | 58063.9 | 712828.1   | 314978.7 | 483493.9  |
| 2011.02 |  | 736130.9 | 259200.5 | 47270.2 | 726017.6   | 317493.5 | 488871.0  |
| 2011.03 | 42240  | 758130.9 | 266255.5 | 44845.2 | 752838.4   | 327346.1 | 494740.7  |
| 2011.04 |  | 757384.6 | 266766.9 | 45489.0 | 756262.4   | 322326.9 | 502170.8  |
| 2011.05 |  | 763409.2 | 269289.6 | 44602.8 | 767339.0   | 323691.6 | 507686.3  |
| 2011.06 | 77640  | 780820.9 | 274662.6 | 44477.8 | 786432.6   | 332541.7 | 514025.5  |
| 2011.07 |  | 772923.7 | 270545.7 | 45183.1 | 779731.7   | 326024.7 | 518941.4  |
| 2011.08 |  | 780852.3 | 273393.8 | 45775.3 | 786797.6   | 326873.9 | 524425.8  |
| 2011.09 | 98053  | 787406.2 | 267193.2 | 47145.3 | 794100.4   | 333918.4 | 529118.3  |
| 2011.10 |  | 816829.3 | 276552.7 | 46579.4 | 791885.0   | 327699.0 | 534986.8  |
| 2011.11 |  | 825493.9 | 281416.4 | 47317.3 | 795114.0   | 330297.1 | 540616.2  |
| 2011.12 | 128286   | 851590.9 | 289847.7 | 50748.5 | 809368.3   | 343635.9 | 547946.7  |
| 2012.01 | 9754   | 855898.9 | 270010.4 | 59820.7 | 801385.3   | 357379.3 | 555253.1  |
| 2012.02 | 20185  | 867171.4 | 270312.1 | 51448.8 | 817398.1   | 358370.5 | 562360.4  |
| 2012.03 | 38889  | 895565.5 | 277998.1 | 49595.7 | 846931.7   | 369224.3 | 572474.8  |
| 2012.04 | 48527  | 889604.0 | 274983.8 | 50199.3 | 842275.3   | 363119.0 | 579292.1  |
| 2012.05 | 59958  | 900048.8 | 278656.3 | 49039.7 | 854499.7   | 367242.1 | 587224.4  |
| 2012.06 | 77760  | 924991.2 | 287526.2 | 49284.6 | 883068.7   | 381342.5 | 596422.6  |
| 2012.07 | 88282  | 919072.4 | 283090.7 | 49705.9 | 878062.3   | 376337.8 | 601823.8  |
| 2012.08 | 100757   | 924894.6 | 285739.3 | 50235.1 | 883106.3   | 379880.5 | 608863.3  |
| 2012.09 | 117219   | 943688.8 | 286788.2 | 53433.5 | 899647.1   | 390146.5 | 615089.5  |
| 2012.10 | 130125   | 936404.3 | 293309.8 | 51467.7 | 896846.6   | 385223.3 | 620143.2  |
| 2012.11 | 141349   | 944832.4 | 296883.1 | 52392.1 | 901585.9   | 388435.2 | 625363.6  |
| 2012.12 | 157631   | 974148.8 | 308664.2 | 54659.8 | 917554.8   | 399551.0 | 629909.6  |
| 2013.01 | 25446  | 992129   | 311229   | 62450   | 929345   | 406604   | 640767  |
| 2013.02 | 36150  | 998601   | 296103   | 60314   | 937065   | 423967   | 646966  |
| 2013.03 | 61652  | 1035858  | 310898   | 55461   | 979301   | 436782   | 657592  |
| 2013.04 | 79276  | 1032552  | 307648   | 55607   | 978300   | 426688   | 665515  |
| 2013.05 | 91136  | 1042169  | 310204   | 54431   | 993114   | 429397   | 672209  |
| 2013.06 | 101511   | 1054404  | 313500   | 54064   | 1009122  | 436697   | 680837  |

注1: 自2006年1月起, 货币供应量统计机构范围不再包括信托投资公司和租赁公司, 本表2005年对该项数据作了同口径调整。

Note 1: Since Jan. 2006, reporting institutions related to statistics of money supply do not include trust and investment companies and leasing companies. Data for 2005 on this table have been adjusted on the same basis accordingly.

注2: 本页2008年4月以前部分数据口径有所调整。

Note 2: Some data before Apr. 2008 on this page have been adjusted according to the change of coverage.

注3: 自2011年起增加社会融资规模指标。社会融资规模是指在一定时期内(每月、每季度或每年)实体经济从金融体系获得的资金总额。统计数据为年累计数, 当期数据为初步数据。

Note 3: Aggregate Financing to the Real Economy(AFRE) was included as a new indicator from 2011. It includes all the funding from the financial system to the real economy during a certain period, such as a month, a quarter or a year. In this sheet, data of "AFE" are yearly accumulated amounts. Statistics for the current period is preliminary.

注4: 自2011年10月起, 货币供应量已包括住房公积金中心存款和非存款类金融机构在存款类金融机构的存款。

Note 4: Since October 2011, money supply has already included deposits in housing provident fund management centers, as well as deposit of un-depository financial institutions with depository financial institutions.

\* 居民储蓄存款更名为储蓄存款。

\* Savings Deposits is renamed as Savings Deposits.

2.2 主要金融指标(消除季节因素)

Major Financial Indicators (Seasonally Adjusted)

单位: 亿元  
Unit: 100 Million Yuan

|         | M2       | M1       | M0      | 金融机构各项存款                                     | 储蓄存款*             | 金融机构各项贷款**                                  |
|---------|----------|----------|---------|--|-------------------|---|
|         |          |          |         | Total Deposits by All Financial Institutions | Savings Deposits* | Total Loans by All Financial Institutions** |
| 2006    | 347174.5 | 123059.8 | 26552.9 | 341067.7                                     | 164658.7          | 239171.4                                    |
| 2007    | 406156.9 | 148274.1 | 29659.6 | 395194.8                                     | 175432.4          | 276698.8                                    |
| 2008    | 479639.3 | 161622.1 | 33535.6 | 475871.3                                     | 222637.5          | 327912.3                                    |
| 2009    | 605617.9 | 213389.4 | 37422.7 | 606842.5                                     | 265817.8          | 420197.8                                    |
| 2010    | 733972.0 | 261115.2 | 43509.6 | 733822.2                                     | 307640.0          | 508033.9                                    |
| 2011.01 | 732101.7 | 257643.0 | 47934.4 | 727610.4                                     | 314478.5          | 500411.6                                    |
| 2011.02 | 737816.6 | 263386.9 | 45633.7 | 731496.0                                     | 311638.5          | 504638.5                                    |
| 2011.03 | 750216.1 | 267960.4 | 45420.6 | 747223.1                                     | 317530.6          | 508733.0                                    |
| 2011.04 | 752796.3 | 268937.2 | 45737.5 | 751743.6                                     | 317655.5          | 516461.1                                    |
| 2011.05 | 761469.0 | 270601.9 | 46357.4 | 758862.7                                     | 321816.9          | 521350.7                                    |
| 2011.06 | 771296.2 | 272880.0 | 46614.0 | 770169.1                                     | 327573.5          | 527156.1                                    |
| 2011.07 | 774468.1 | 271880.7 | 47507.9 | 774135.0                                     | 328223.5          | 534219.5                                    |
| 2011.08 | 782576.6 | 273323.2 | 48126.8 | 783931.1                                     | 331943.5          | 541586.7                                    |
| 2011.09 | 789433.0 | 271432.5 | 47571.7 | 788375.3                                     | 334561.6          | 547218.9                                    |
| 2011.10 | 830372.9 | 277772.3 | 48359.3 | 797983.7                                     | 336700.1          | 556801.8                                    |
| 2011.11 | 839529.4 | 280254.3 | 48888.9 | 807481.7                                     | 341307.6          | 565060.4                                    |
| 2011.12 | 855327.4 | 282329.8 | 49234.1 | 822804.1                                     | 346392.0          | 573327.2                                    |
| 2012.01 | 857573.4 | 270722.4 | 51885.7 | 817076.2                                     | 353906.9          | 574300.3                                    |
| 2012.02 | 870392.4 | 274331.0 | 48332.7 | 829163.5                                     | 353930.6          | 580505.3                                    |
| 2012.03 | 880238.1 | 276362.3 | 49322.1 | 838596.9                                     | 357238.7          | 585672.7                                    |
| 2012.04 | 889121.9 | 277396.0 | 50318.1 | 840078.6                                     | 360484.7          | 594686.1                                    |
| 2012.05 | 899338.7 | 280496.2 | 51266.4 | 848955.5                                     | 365434.1          | 602514.2                                    |
| 2012.06 | 910026.4 | 284194.1 | 51399.7 | 862898.9                                     | 372353.0          | 610566.4                                    |
| 2012.07 | 921533.6 | 285518.1 | 51535.0 | 872748.3                                     | 378368.3          | 617948.9                                    |
| 2012.08 | 925345.9 | 287106.2 | 52350.2 | 879294.1                                     | 384689.1          | 625938.2                                    |
| 2012.09 | 944618.0 | 292370.8 | 53971.7 | 892723.6                                     | 390430.6          | 634509.5                                    |
| 2012.10 | 950770.1 | 292086.3 | 53796.2 | 903488.2                                     | 396407.4          | 640438.8                                    |
| 2012.11 | 958440.0 | 293000.4 | 53859.7 | 911740.1                                     | 400790.2          | 646887.3                                    |
| 2012.12 | 974547.8 | 297717.4 | 53596.6 | 924390.6                                     | 404985.3          | 654075.0                                    |
| 2013.01 | 990282   | 306103   | 54188   | 944052                                       | 407888            | 659588                                      |
| 2013.02 | 1001603  | 304841   | 55687   | 949909                                       | 414190            | 666255                                      |
| 2013.03 | 1020770  | 313108   | 56652   | 967894                                       | 422550            | 676414                                      |
| 2013.04 | 1026991  | 310668   | 56063   | 974815                                       | 423574            | 680832                                      |
| 2013.05 | 1037930  | 311054   | 56578   | 985011                                       | 428682            | 687674                                      |
| 2013.06 | 1038130  | 310898   | 56941   | 988032                                       | 429656            | 694743                                      |

\* 居民储蓄存款更名为储蓄存款。

\* Savings Deposits is renamed as Savings Deposits.

\*\* 各项贷款按可比口径数据计算, 包含 2001—2008 年剥离出去的不良贷款数据。

\*\* Total loans are calculated on the basis of comparable basis, which include the non-performing loans separated from financial institutions from 2001 to 2008.

2.3.1 社会融资规模统计表

## Statistics of Aggregate Financing of the Economy

单位: 亿元

Unit: 100 Million Yuan

|         | 社会融资<br>规模<br>Aggregate<br>Financing to<br>the Real Economy<br>(AFRE) | 其中 Of Which                    |   |                            |                        |   |   |   |
|---------|---|--------------------------------|---|----------------------------|------------------------|---|---|---|
|         |   | 人民币<br>贷款<br>RMB Bank<br>Loans | 外币贷款<br>(折合人民币)<br>Foreign Currency<br>Bank Loans<br>(Converted into RMB) | 委托贷款<br>Entrusted<br>Loans | 信托贷款<br>Trust<br>Loans | 未贴现的银行<br>承兑汇票<br>Undiscounted<br>Bankers'<br>Acceptances | 企业债券<br>Net<br>Financing<br>of Corporate<br>Bonds | 非金融企业<br>境内股票融资<br>Equity Financing on<br>the Domestic Stock<br>Market by Non-<br>Financial Enterprises |
| 2002.01 | -472  | 240                            | -11   | -12                        | —                      | -755  | 0   | 40  |
| 2002.02 | 289   | 530                            | 92  | 16                         | —                      | -402  | 0   | 27  |
| 2002.03 | 3136  | 2554                           | 65  | -3                         | —                      | 315   | 0   | 173   |
| 2002.04 | 1151  | 937                            | 54  | 119                        | —                      | 51  | 10  | -56   |
| 2002.05 | 1774  | 1110                           | 73  | 74                         | —                      | 426   | 10  | 50  |
| 2002.06 | 2621  | 2929                           | 88  | 18                         | —                      | -589  | 78  | 55  |
| 2002.07 | 813   | 620                            | 33  | 45                         | —                      | 36  | 10  | 34  |
| 2002.08 | 1585  | 1736                           | -15   | -14                        | —                      | -233  | 23  | 48  |
| 2002.09 | 3507  | 2885                           | 88  | -23                        | —                      | 296   | 58  | 162   |
| 2002.10 | 795   | 722                            | 16  | -27                        | —                      | -61   | 87  | 27  |
| 2002.11 | 1805  | 1539                           | 42  | -16                        | —                      | 107   | 60  | 34  |
| 2002.12 | 3109  | 2673                           | 205   | 0                          | —                      | 113   | 30  | 34  |
| 2003.01 | 3386  | 3266                           | 106   | 37                         | —                      | -113  | 25  | 29  |
| 2003.02 | 998   | 1091                           | 53  | 18                         | —                      | -277  | 56  | 20  |
| 2003.03 | 4041  | 3725                           | 271   | 23                         | —                      | -41   | 0   | 26  |
| 2003.04 | 2622  | 1945                           | 227   | 68                         | —                      | 280   | 12  | 47  |
| 2003.05 | 2971  | 2534                           | 265   | 2                          | —                      | 121   | 5   | 8   |
| 2003.06 | 5842  | 5250                           | 299   | 176                        | —                      | 13  | 16  | 40  |
| 2003.07 | 1344  | 1062                           | 103   | 22                         | —                      | -34   | 58  | 92  |
| 2003.08 | 3321  | 2808                           | 247   | 100                        | —                      | -5  | 55  | 73  |
| 2003.09 | 4040  | 3035                           | 400   | 78                         | —                      | 432   | 14  | 34  |
| 2003.10 | 1218  | 616                            | 148   | -10                        | —                      | 378   | 15  | 36  |
| 2003.11 | 1832  | 1025                           | 202   | 66                         | —                      | 355   | 34  | 110   |
| 2003.12 | 2498  | 1295                           | -37   | 21                         | —                      | 902   | 210   | 44  |
| 2004.01 | 2114  | 2540                           | 180   | 133                        | —                      | -851  | 4   | 70  |
| 2004.02 | 438   | 2085                           | 287   | 138                        | —                      | -2174   | 45  | 20  |
| 2004.03 | 6557  | 3726                           | 313   | 98                         | —                      | 2316  | 10  | 45  |
| 2004.04 | 2731  | 1995                           | 171   | 99                         | —                      | 331   | 19  | 70  |
| 2004.05 | 2443  | 1132                           | 151   | 1316                       | —                      | -263  | 23  | 42  |
| 2004.06 | 3229  | 2821                           | 209   | 144                        | —                      | -119  | 17  | 103   |
| 2004.07 | 590   | -19                            | -65   | 99                         | —                      | 329   | 4   | 194   |
| 2004.08 | 1501  | 1157                           | 50  | 162                        | —                      | -3  | 27  | 59  |
| 2004.09 | 2981  | 2502                           | 16  | 115                        | —                      | 134   | 130   | 25  |
| 2004.10 | 483   | 256                            | -105  | 98                         | —                      | 105   | 70  | 16  |
| 2004.11 | 1977  | 1495                           | 175   | 358                        | —                      | -151  | 37  | 5   |
| 2004.12 | 3586  | 2983                           | 1   | 357                        | —                      | 58  | 82  | 23  |



2.3.2 社会融资规模统计表

Statistics of Aggregate Financing of the Economy

单位：亿元

Unit: 100 Million Yuan

|         | 社会融资规模<br>Aggregate Financing to the Real Economy (AFRE) | 其中 Of Which             |  |                         |                     |   |  |   |
|---------|--|-------------------------|--|-------------------------|---------------------|---|--|---|
|         |  | 人民币贷款<br>RMB Bank Loans | 外币贷款<br>(折合人民币)<br>Foreign Currency Bank Loans<br>(Converted into RMB) | 委托贷款<br>Entrusted Loans | 信托贷款<br>Trust Loans | 未贴现的银行<br>承兑汇票<br>Undiscounted Bankers' Acceptances | 企业债券<br>Net Financing of Corporate Bonds | 非金融企业<br>境内股票融资<br>Equity Financing on the Domestic Stock Market by Non-Financial Enterprises |
| 2005.01 | 3620   | 2810                    | 727  | 187                     | —                   | -190  | 20                                       | 16  |
| 2005.02 | 824  | 959                     | -6   | 53                      | —                   | -251  | 0  | 29  |
| 2005.03 | 4189   | 3607                    | 172  | 277                     | —                   | 69  | 0  | 6   |
| 2005.04 | 1999   | 1420                    | 91   | 200                     | —                   | 177   | 47                                       | 10  |
| 2005.05 | 1968   | 1089                    | 206  | 109                     | —                   | 92  | 151                                      | 274   |
| 2005.06 | 4723   | 4653                    | 152  | 89                      | —                   | -323  | 85                                       | 5   |
| 2005.07 | 629  | -314                    | 186  | 202                     | —                   | 172   | 330                                      | 0   |
| 2005.08 | 2097   | 1897                    | -155   | 153                     | —                   | 50  | 90                                       | 0   |
| 2005.09 | 6041   | 3453                    | -30  | 171                     | —                   | 2126  | 253                                      | 0   |
| 2005.10 | -974   | 264                     | 287  | 215                     | —                   | -2141   | 347                                      | 0   |
| 2005.11 | 2368   | 2251                    | -136   | 123                     | —                   | -208  | 265                                      | 0   |
| 2005.12 | 2524   | 1454                    | -80  | 184                     | —                   | 450   | 422                                      | 0   |
| 2006.01 | 6323   | 5674                    | 114  | 345                     | 31                  | -208  | 303                                      | 0   |
| 2006.02 | 1737   | 1491                    | 71   | 119                     | 26                  | -221  | 204                                      | 0   |
| 2006.03 | 7472   | 5402                    | 159  | 204                     | 38                  | 1176  | 299                                      | 127   |
| 2006.04 | 3325   | 3163                    | 128  | 419                     | 27                  | -752  | 271                                      | 0   |
| 2006.05 | 3785   | 2094                    | 108  | 257                     | 87                  | 886   | 289                                      | 6   |
| 2006.06 | 3843   | 3655                    | 17   | 129                     | 75                  | -420  | 209                                      | 104   |
| 2006.07 | 2254   | 1634                    | -65  | 194                     | 98                  | 100   | 116                                      | 114   |
| 2006.08 | 3362   | 1900                    | 353  | 201                     | 68                  | 253   | 153                                      | 357   |
| 2006.09 | 3077   | 2201                    | 14   | 228                     | 94                  | 415   | -8                                       | 52  |
| 2006.10 | 894  | 169                     | -12  | 155                     | 107                 | 128   | 237                                      | 44  |
| 2006.11 | 2788   | 1935                    | 233  | 254                     | 68                  | -179  | 212                                      | 183   |
| 2006.12 | 3837   | 2204                    | 341  | 188                     | 107                 | 322   | 26                                       | 548   |
| 2007.01 | 6908   | 5663                    | -208   | 211                     | 124                 | 913   | -39                                      | 158   |
| 2007.02 | 3083   | 4138                    | 197  | 162                     | 108                 | -1573   | -80                                      | 65  |
| 2007.03 | 6311   | 4417                    | 211  | 100                     | 65                  | 1143  | 177                                      | 128   |
| 2007.04 | 6103   | 4220                    | 118  | 460                     | 111                 | 1006  | -41                                      | 145   |
| 2007.05 | 3824   | 2473                    | 265  | 230                     | 245                 | 346   | 52                                       | 137   |
| 2007.06 | 7042   | 4515                    | 684  | 243                     | 152                 | 1025  | 309                                      | 20  |
| 2007.07 | 3100   | 2314                    | 316  | 331                     | 126                 | -351  | 133                                      | 149   |
| 2007.08 | 6961   | 3029                    | 585  | 421                     | 203                 | 2113  | 263                                      | 256   |
| 2007.09 | 5290   | 2835                    | 647  | 270                     | -3                  | 588   | 310                                      | 548   |
| 2007.10 | 3688   | 1361                    | 458  | -250                    | 434                 | 398   | 213                                      | 992   |
| 2007.11 | 3073   | 874                     | 525  | 135                     | -169                | -212  | 790                                      | 1017  |
| 2007.12 | 4281   | 485                     | 66   | 1058                    | 307                 | 1306  | 198                                      | 718   |