

建筑立场系列丛书 No.36

体验与感受

艺术画廊与剧院

Experiencing and Sensing

Art Gallery and Theater

中文版

(韩语版第352期)

韩国C3出版公社 | 编

大连理工大学出版社

建筑立场系列丛书 No.36



体验与感受

艺术画廊与剧院

Experiencing and Sensing

Art Gallery and Theater

中文版

(韩语版第352期)

韩国c3出版公社 | 编

王凤霞 于风军 蒋丽 | 译

大连理工大学出版社

C3, Issue 2013.12

All Rights Reserved. Authorized translation from the Korean-
English language edition published by C3 Publishing Co., Seoul.

© 2014大连理工大学出版社

著作权合同登记06-2014年第25号

版权所有·侵权必究

图书在版编目(CIP)数据

体验与感受：艺术画廊与剧院：汉英对照 / 韩国C3
出版公社编；王凤霞等译. — 大连：大连理工大学出
版社，2014.3

(C3建筑立场系列丛书；36)

ISBN 978-7-5611-8914-6

I. ①体… II. ①韩… ②王… III. ①画廊—建筑设
计—汉、英②剧院—建筑设计—汉、英 IV. ①TU242

中国版本图书馆CIP数据核字(2014)第031600号

出版发行：大连理工大学出版社

(地址：大连市软件园路80号 邮编：116023)

印刷：上海锦良印刷厂

幅面尺寸：225mm×300mm

印 张：11.5

出版时间：2014年3月第1版

印刷时间：2014年3月第1次印刷

出 版 人：金英伟

统 筹：房 磊

责任编辑：张昕焱

封面设计：王志峰

责任校对：赵姗姗

书 号：ISBN 978-7-5611-8914-6

定 价：228.00元

发 行：0411-84708842

传 真：0411-84701466

E-mail: 12282980@qq.com

URL: <http://www.dutp.cn>

4

建筑脉动 学校设施和 公共领域

004 公共领域、体育场所和学校之间的连接点_A Andrew Tang

006 坎贝尔体育中心_S Steven Holl Architects

016 马德里自治大学的马约尔广场_M MTM Arquitectos

32

体验与感受

艺术画廊与剧院

032 体验艺术画廊与剧院_Heidi Saarinen

038 奥克兰美术馆_F Francis-Jones Morehen Thorp + Archimedia

048 柏林建筑图纸博物馆_S Speech Tchoban & Kuznetsov

056 水田艺术博物馆_S Studio Sumo

066 让·克洛德·卡里埃剧院_A A+ Architecture

076 乌镇大剧院_A Artech Architects

088 艺术馆_F Future Architecture Thinking

094 树美术馆_D Daipu Architects

106 丰岛横尾馆_Y Yuko Nagayama & Associates

116 普图伊演艺中心_E Enota

124

邻里住宅 立面和内部世界

124 通往未知世界的大门_M Marta González Antón

128 幸运书屋_C Chang Architects

138 Binh Thanh住宅_V Vo Trong Nghia Architects + Sanuki+Nishizawa Architects

146 Venturini住宅_A Adamo-Faiden

152 Alcobaça住宅_A Aires Mateus

164 103住宅_M Marlene Uldschmidt Architects

174 Flynn马厩改建住宅_L Lorcan O'Herlihy Architects

180 建筑师索引



建筑立场系列丛书 No. 36

4

Archipulse

University Facility and Public Realm

004 *Connecting Dots between Public Realm, Sports and School*_Andrew Tang

006 Campbell Sports Center_Steven Holl Architects

016 Plaza Major of UAM_MTM Arquitectos



No.34

Experiencing and Sensing : Art Gallery and Theater

32

Experiencing and Sensing

Art Gallery and Theater

032 *Experiencing Art Gallery and Theater Buildings*_Heidi Saarinen

038 Auckland Art Gallery_Francis-Jones Morehen Thorp + Archimedia

048 Museum for Architecture Drawings in Berlin_Speech Tchoban & Kuznetsov

056 Mizuta Museum of Art_Studio Sumo

066 Jean-Claude Carrière Theater_A+ Architecture

076 Wuzhen Theater_Artech Architects

088 House of the Arts_Future Architecture Thinking

094 Tree Art Museum_Daipu Architects

106 Teshima Yokoo House_Yuko Nagayama & Associates

116 Ptuj Performance Center_Enota

124

Dwell How

The Facade and the Inner World

124 *Gate to an Unexpected World*_Marta González Antón

128 Lucky Shophouse_Chang Architects

138 Binh Thanh House_Vo Trong Nghia Architects + Sanuki+Nishizawa Architects

146 Venturini House_Adamo-Faiden

152 Alcobaca House_Aires Mateus

164 103 House_Marlene Uldschmidt Architects

174 Flynn Mews House_Lorcan O'Herlihy Architects

180 Index

建筑立场系列丛书 No.36

体验与感受

艺术画廊与剧院

Experiencing and Sensing

Art Gallery and Theater

中文版

(韩语版第352期)

韩国c3出版公社 | 编

王凤霞 于风军 蒋丽 | 译

大连理工大学出版社

4

建筑脉动 学校设施和 公共领域

- 004 公共领域、体育场所和学校之间的连接点_Andrew Tang
- 006 坎贝尔体育中心_Steven Holl Architects
- 016 马德里自治大学的马约尔广场_MTM Arquitectos

32

体验与感受

艺术画廊与剧院

- 032 体验艺术画廊与剧院_Heidi Saarinen
- 038 奥克兰美术馆_Francis-Jones Morehen Thorp + Archimedia
- 048 柏林建筑图纸博物馆_Speech Tchoban & Kuznetsov
- 056 水田艺术博物馆_Studio Sumo
- 066 让·克洛德·卡里埃剧院_A+ Architecture
- 076 乌镇大剧院_Artech Architects
- 088 艺术馆_Future Architecture Thinking
- 094 树美术馆_Daipu Architects
- 106 丰岛横尾馆_Yuko Nagayama & Associates
- 116 普图伊演艺中心_Enota



建筑立场系列丛书
No. 36

124

邻里住宅 立面和内部世界

- 124 通往未知世界的大门_Marta González Antón
- 128 幸运书屋_Chang Architects
- 138 Binh Thanh住宅_Vo Trong Nghia Architects + Sanuki+Nishizawa Architects
- 146 Venturini住宅_Adamo-Faiden
- 152 Alcobaça住宅_Aires Mateus
- 164 103住宅_Marlene Uldschmidt Architects
- 174 Flynn马厩改建住宅_Lorcan O'Herlihy Architects
- 180 建筑师索引

4

Archipulse

University Facility and Public Realm

004 *Connecting Dots between Public Realm, Sports and School*_Andrew Tang

006 Campbell Sports Center_Steven Holl Architects

016 Plaza Major of UAM_MTM Arquitectos

32

Experiencing and Sensing

Art Gallery and Theater

032 *Experiencing Art Gallery and Theater Buildings*_Heidi Saarinen

038 Auckland Art Gallery_Francis-Jones Morehen Thorp + Archimedia

048 Museum for Architecture Drawings in Berlin_Speech Tchoban & Kuznetsov

056 Mizuta Museum of Art_Studio Sumo

066 Jean-Claude Carrière Theater_A+ Architecture

076 Wuzhen Theater_Artech Architects

088 House of the Arts_Future Architecture Thinking

094 Tree Art Museum_Daipu Architects

106 Teshima Yokoo House_Yuko Nagayama & Associates

116 Ptuj Performance Center_Enota

124

Dwell How

The Facade and the Inner World

124 *Gate to an Unexpected World*_Marta González Antón

128 Lucky Shophouse_Chang Architects

138 Binh Thanh House_Vo Trong Nghia Architects + Sanuki + Nishizawa Architects

146 Venturini House_Adamo-Faiden

152 Alcobaça House_Aires Mateus

164 103 House_Marlene Uldschmidt Architects

174 Flynn Mews House_Lorcan O'Herlihy Architects

180 Index



No.34

Experiencing and Sensing : Art Gallery and Theater

学校设施和公共领域

公共领域、体育场所和学校之间的连接点

大学不仅仅总是关于教室、课本和因拖沓的学习而导致的整夜苦读。许多学生对大学的美好印象来自于其他的活动，如聚会、娱乐和体育活动。娱乐中心作为学生们聚会、交流、会面和单独学习的中心，迎合了这些学生们的需要，同时又提供设施供他们锻炼并保持身体健康。因为学术性运动员既想要锻炼身体又渴望有学术上的进步，学校强调在该中心内设计一些基础设施，以满足所有学生的需求。新设施的侧重点不仅仅是体育场、更衣室和负重训练室。在这里，身体和心灵成为队友，都在其共同成功的道路上发挥同样重要的作用。

因为许多学校都位于城市环境中，娱乐中心正在渐渐成为学校的一个发挥代表作用的地方，成为人们由临近社区或公共交通运输路线

接近时第一眼看见的建筑。这些设施通常位于校园的边缘并起到连接周围社区、公共空间和学校私人项目区的交通的城市集合点作用。其环境旨在为建筑创造了一个“移动”和与周边相应的机会：如纽约哥伦比亚大学的坎贝尔体育中心那样悬吊于空中，以产生一个欢迎入口，同时俯瞰高架火车；或像马德里自治大学的马约尔广场建筑那样深入景观设计，以产生聚集人群和用桥梁连接周围建筑的开放公共空间。明白了协同的重要性，世界各地的建筑师们正在营造这些公共集会空间，以促进学生们的成长。

MTM建筑事务所设计的马德里自治大学的马约尔广场建筑坐落于原有的林荫大道的尽头，它为学校的新项目提供场地。该场地形成

Connecting Dots between Public Realm, Sports and School

A university has not always been about classrooms, textbooks and procrastination induced all-nighters. Many students' fond memories of college come from other activities such as social gatherings, recreation and sport events. Recreation Centers cater to these students as hubs for students to gather, exchange, meet and study individually while offering facilities to exercise and condition their bodies. As more demands are put on scholar-athletes to perform physically as well as academically, schools have emphasized providing a supportive infrastructure within which all students can succeed. New facilities are focusing on more than just sport fields, lockers, and weight rooms. The body and mind have become teammates, each as important as the other in ensuring their collective success.

As many schools are situated in urban settings, recreation centers are becoming a representative part of the school, being the first building to be seen when approaching from adjacent neighborhoods or public transportation lines. These facilities are usually at

the edge of the campus and serve as urban anchors to connect the surrounding neighborhoods, public spaces and transportation to the private programs of the schools. Its contextual ambition creates an opportunity for the architecture to "move" and respond to its surrounding: lifting into the air to create a welcoming portal while overlooking the elevated trains as is the case of Campbell Sports Center of Columbia University in New York; or digging into the landscape to create open public space to gather and bridge with surrounding buildings as is the case with the Plaza Major Building of The Autonomous University of Madrid (UAM). Understanding the importance of collaboration, architects worldwide are helping to create these communal gathering spaces for students to grow.

The Plaza Major building at UAM by MTM Arquitectos in Madrid is situated at the end of an existing boulevard, housing the school's new programs. It offers a healthy mix of both private and public spaces, together forming a communal open space. With its lack

University Facility

坎贝尔体育中心/Steven Holl Architects
 马德里自治大学的马约尔广场/MTM Arquitectos

公共领域、体育场所和学校之间的连接点
 /Andrew Tang

了私人与公共空间的有益组合，两种空间共同组成了一处公共开放空间。由于没有界定持续拓展的边缘，场地的空间布局和设计明显地反映了协作中包容性的重要性。七座桥可以通往广场内部，使内外形成流畅的过渡，而马蹄铁形的屋顶位于景观之上12m，作为林荫大道的扩建区。屋顶除了提供室外娱乐空间之外，因光伏电池板排放于屋顶边界，它也为设施提供能量来源。整个综合实施和周边地区的协同作用得到了充分的发挥。随着教室和娱乐空间的精心设置和混合，能源的公用和协同作用就很容易实现了。而在太平洋的彼岸，建筑在提供一处共同发展的、成功的空间方面发挥着相同的作用。

坐落于曼哈顿北部的坎贝尔体育中心发挥着从繁忙城市街道到

of defined edges allowing for continuous movement, the spatial layout of the site and design clearly reflect the importance of inclusivity in collaboration. Seven bridges provide access to the interior of the plaza, allowing a seamless transition from the outside in, while the roof, shaped like a horseshoe, is elevated 12 meters above the landscape and serves as an extension of the boulevard. The roof, in addition to providing outdoor areas for recreation, is a source of the facilities energy as PV panels line the perimeter. The synergy of the entire complex and surrounding area is on full display. With classrooms and recreational spaces deliberately placed and mixed throughout, communal and collaborative energies are effortless. Just across the Atlantic, architecture has played a similar role in providing a space for communal growth and success. Nestled comfortably in Northern Manhattan, The Campbell Sports Center serves as a gateway from the bustling city streets to the existing Bakers Athletic Complex. Students are able to make a physical and mental transition into their new surroundings by

Campbell Sports Center/Steven Holl Architects
 Plaza Major of UAM/MTM Arquitectos

Connecting Dots between Public Realm, Sports and School
 /Andrew Tang

Bakers综合体育中心的门户的作用。学生们可以通过迈进和穿梭于新中心来实现与新环境产生的身体和精神上的过渡。鉴于“空间线、平面点”的设计理念，新建筑想要表达运动场在团队沟通中起到的图表作用，提议其应该在空中移动姿势，以形成一个欢迎参观者进入体育场的入口，同时也表达出斯蒂文·霍尔雕塑品质的特点。该建筑是一个体现心灵和身体的三层不同规划的结构，每一层都体现其中的一种主要目的：服务于身体的体力和健身层；服务于心灵的学习空间和接待区；服务于心灵/身体的学生运动员剧院。这两个项目中学习和娱乐的协同作用体现学术结构对待努力学习和尽情玩乐之间的一种平衡态度。或许这两个项目的动态性暗示我们应该尽情地玩乐。

stepping into and through the new center. With a design concept of "lines in space, points on the ground," the new building conveys the field play diagrams used in team communication, that suggests the building making moving gestures into the air to create a portal that welcomes visitors into the playing fields while also delivering a sculptural quality characteristic of Steven Holl. The building is stratified in three layers of different programs reflecting the mind and body, with each layer featuring one of the main aims: The strength and conditioning level for the body; the study space and hospitality zone for the mind; the student athlete theater for the mind/body. The collaboration of study and recreation for success in both of these projects reflects the academic institution's attitude towards a balance of working hard and playing hard. Perhaps the dynamism of both projects implies that we should play harder.

Andrew Tang

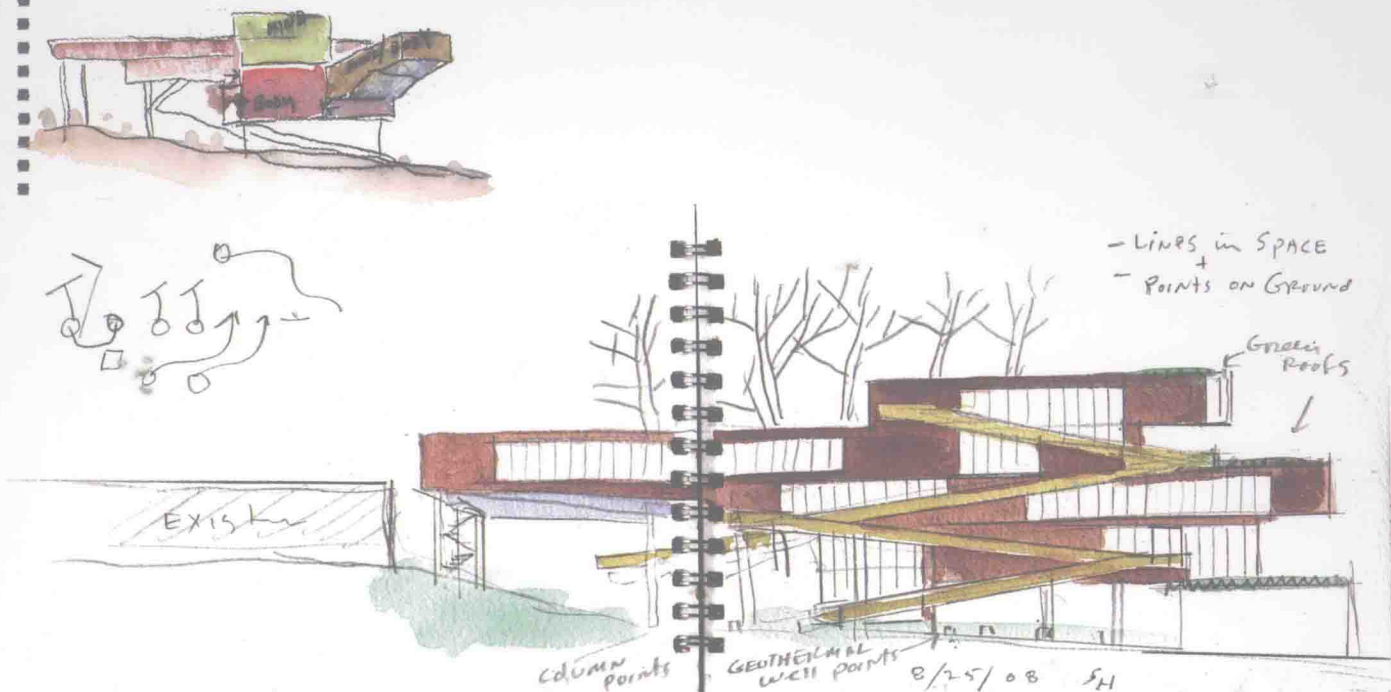
and Public Realm

坎贝尔体育中心

Steven Holl Architects







坎贝尔体育中心项目位于西218号街和百老汇的拐角处——曼哈顿的最北端，此处百老汇与第十大道和地铁一号线的高架轨道相交，该中心形成了一个通往贝克田径综合楼的新“大门”。贝克田径综合楼是哥伦比亚大学户外体育项目的主要竞技设施。

自20世纪70年代中期所建的马塞勒斯·哈特利·道奇体育健身中心以来，坎贝尔体育中心是哥伦比亚大学校园内的第一个新建的田径场，它将成为贝克田径综合楼新的活力，并为整个校际竞技项目提供更多的项目空间。该中心增加了约4459m²的空间，设有力量训练和健身训练空间、各项运动活动室、剧院式会客室、用于接待的多功能套间和学生-运动员学习室。

坎贝尔体育中心旨在为有抱负的学生-运动员提供心灵、体魄和心灵/体魄方面的服务。

其设计理念“平面点、空间线”从斜坡场地上的某个地基点发展。这就像足球、橄榄球和棒球的场地布局图一样，其中的点和线模拟比赛场地上的推拉动作。

该建筑塑造了百老汇和218号街的一个城市街角，然后向上抬升形成一个入口，将体育场与街景连接起来。蓝色的挑檐在阶梯的景观中得以延伸，强调了贝克田径综合楼具有城市规模的门廊的开放性。

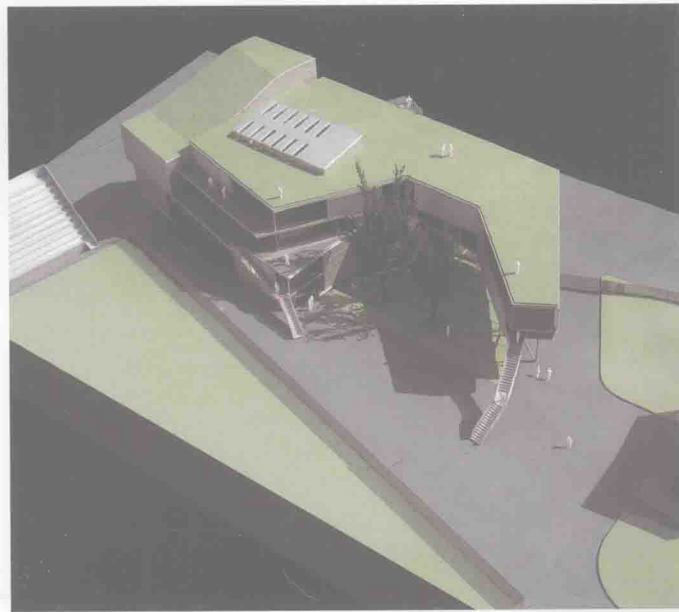
作为“空间线”，该建筑的平台和外部楼梯使体育场可以向上攀升进入大楼，而人们从上层建筑可以欣赏到体育场甚至曼哈顿的景色。

该建筑采用清水混凝土和钢结构，以及磨砂铝立面，使得该建筑与贝克体育场的独特历史建立起一种连接。1693年，横跨斯派特·代夫尔河的国王大桥是通往曼哈顿的主要通道。百老汇大桥目前的基础设施以数百吨的起重能力架起了高架地铁和百老汇。而这些细节和结构都体现在了坎贝尔体育中心项目当中。

Campbell Sports Center

Located on the corner of West 218th Street and Broadway – the northernmost edge of Manhattan, where Broadway crosses with Tenth Avenue and the elevated tracks of the 1 Subway Line – the Campbell Sports Center forms a new gateway to the Baker Athletics Complex, the primary athletics facility for the Columbia University's outdoor sports program.

It's the first new athletics building to be constructed in Columbia University's campus since the Marcellus Hartley Dodge Physical Fitness Center was built in the mid-1970s, the Campbell Sports Center will be the new cornerstone of the revitalized Baker Ath-





letics Complex and provides increased program space for the entire intercollegiate athletics program. The facility, which adds approximately 48,000 square foot of space, houses strength and conditioning spaces, offices for varsity sports, theater-style meeting rooms, a hospitality suite and student-athlete study rooms.

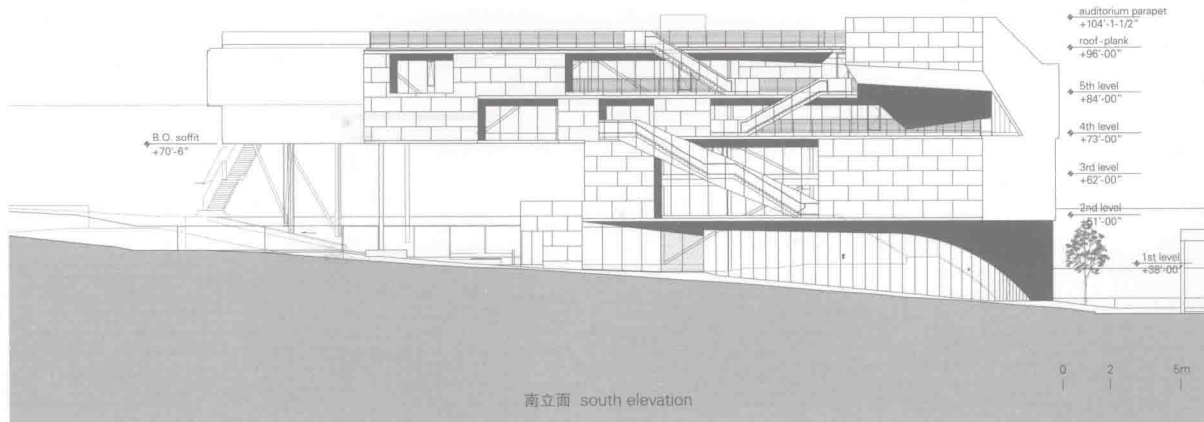
The Campbell Sports Center aims at serving the mind, the body and the mind/body for aspiring scholar-athletes.

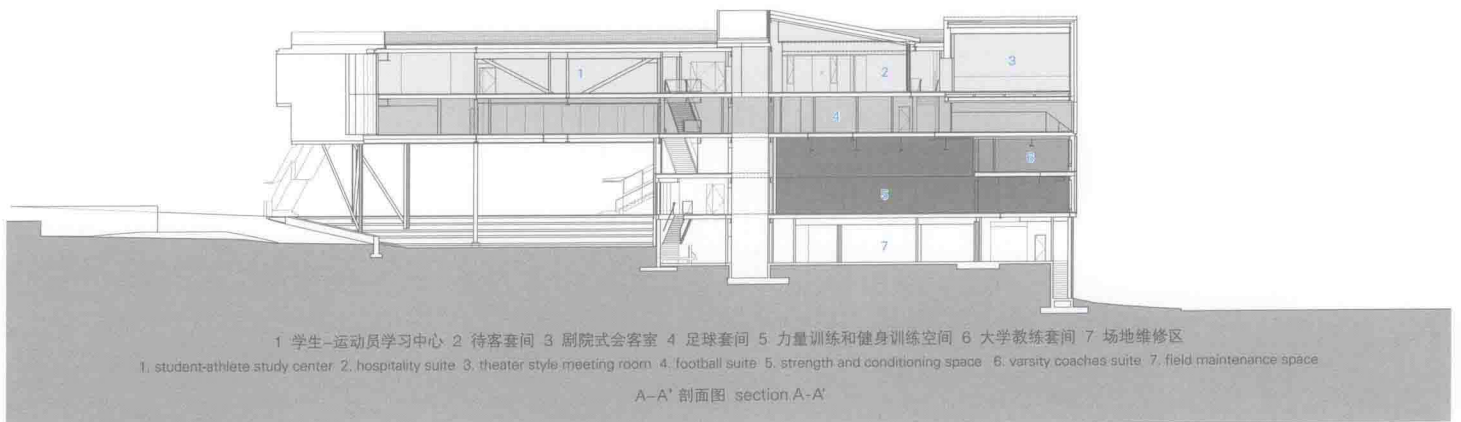
The design concept "points on the ground, lines in space" – like field play diagrams used for football, soccer, and baseball – develops from point foundations on the sloping site. Just as points and lines in diagrams yield the physical push and pull on the field, the building's elevations push and pull in space.

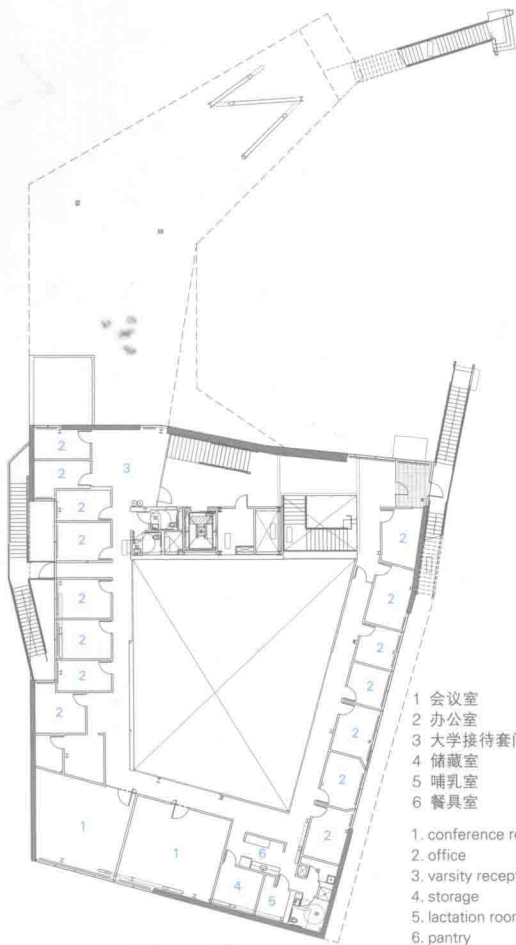
The building shapes an urban corner on Broadway and 218th Street, then lifts up to form a portal, connecting the playing field with the streetscape. Extending over a stepped landscape, blue soffits heighten the openness of the urban scale portico to the Baker Athletics Complex. Terraces and external stairs, which serve as "lines in space," draw the field play onto and into the building and give views from the upper levels over the field and Manhattan.

With an exposed concrete and steel structure and a sanded aluminum facade, the building connects back to Baker Field's unique history. In 1693, The Kings Bridge, which spanned the Spuyten Duyvil Creek, was the main access rout into Manhattan. The current infrastructure of the Broadway Bridge carries the elevated subway, and Broadway, with a lift capacity of hundreds of tons. Its detail and structure are reflected in the Campbell Sports Center.

项目名称: Campbell Sports Center
 地点: New York, NY, United States
 建筑师: Steven Holl, Chris McVoy
 主要合伙人: Chris McVoy
 项目副主管: Olaf Schmidt
 项目团队: Marcus Carter, Christiane Deptolla, Peter Englaender, Runar Halldorsson, Jackie Luk, Filipe Taboada, Dimitra Tsachrelia, Ebbie Wisecarver
 施工经理: Structuretone
 结构工程师: Robert Silman Associates
 M.E.P.工程师: ICOR Associates
 土木工程师: Hirani Engineering
 可持续性工程师: Transsolar
 幕墙设计顾问: W.J. Higgins
 照明工程师: Wald Studio
 音像顾问: The Clariant Group
 声学顾问: Cerami Associates
 甲方: Columbia University
 总建筑面积: 4,459m²
 设计时间: 2008 竣工时间: 2013
 摄影师: ©Iwan Baan(courtesy of the architect)

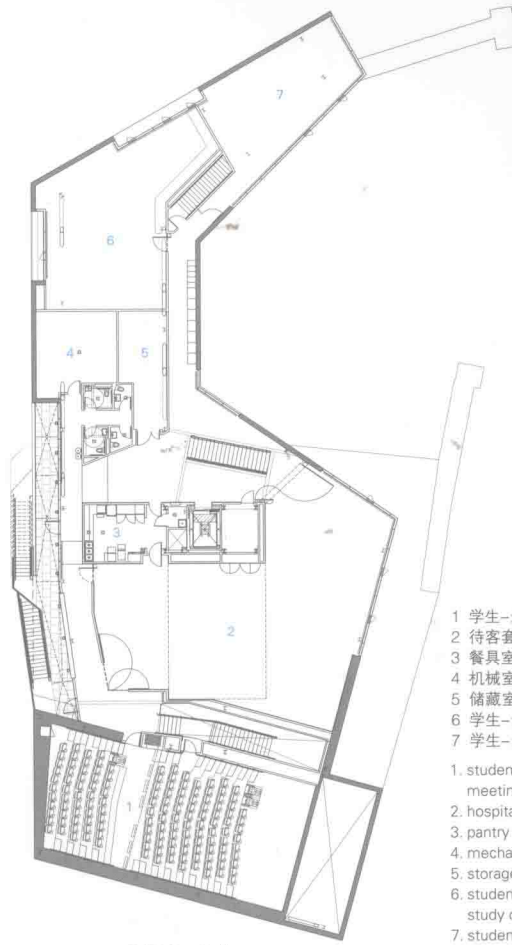






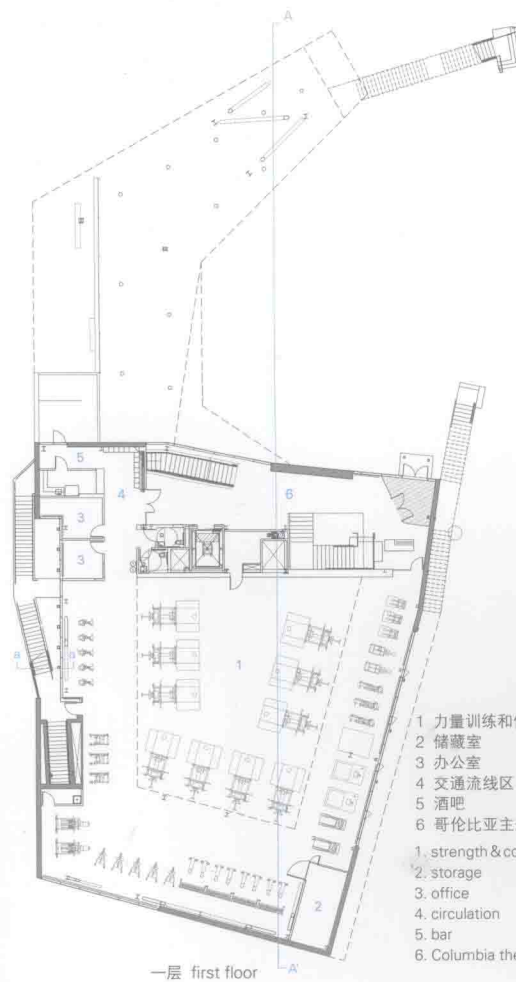
二层 second floor

- 1 会议室
 - 2 办公室
 - 3 大学接待套间
 - 4 储藏室
 - 5 哺乳室
 - 6 餐具室
- 1. conference room
 - 2. office
 - 3. varsity reception suite
 - 4. storage
 - 5. lactation room
 - 6. pantry



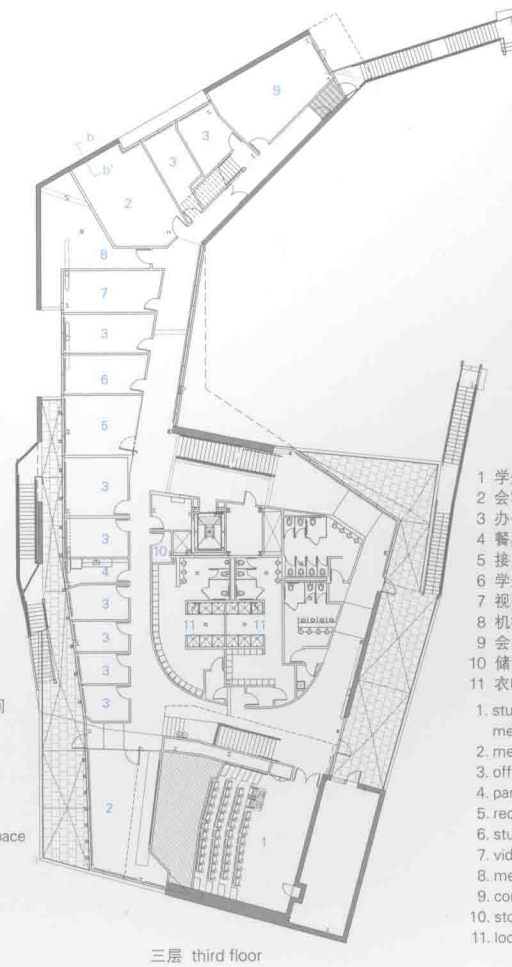
四层 fourth floor

- 1 学生-运动员会客室
 - 2 待客套间
 - 3 餐具室
 - 4 机械室
 - 5 储藏室
 - 6 学生-运动员学习中心
 - 7 学生-运动员休息室
- 1. student-athlete meeting room
 - 2. hospitality suite
 - 3. pantry
 - 4. mechanical room
 - 5. storage
 - 6. student-athlete study center
 - 7. student-athlete lounge



一层 first floor

- 1 力量训练和健身训练空间
 - 2 储藏室
 - 3 办公室
 - 4 交通流线区
 - 5 酒吧
 - 6 哥伦比亚主题空间
- 1. strength & conditioning space
 - 2. storage
 - 3. office
 - 4. circulation
 - 5. bar
 - 6. Columbia themed space



三层 third floor

- 1 学生-运动员会客室
 - 2 会客室
 - 3 办公室
 - 4 餐具室
 - 5 接待处
 - 6 学生学习区
 - 7 视听室
 - 8 机械室
 - 9 会议室
 - 10 储藏室
 - 11 衣帽间
- 1. student-athlete meeting room
 - 2. meeting room
 - 3. office
 - 4. pantry
 - 5. reception
 - 6. student study area
 - 7. video room
 - 8. mechanical room
 - 9. conference room
 - 10. storage
 - 11. locker room

