



诠释巴洛克 别墅豪宅

STYLE BAROQUE
VILLA MASSION

ID Book 图书工作室 编



华中科技大学出版社

<http://www.hustp.com>



诠释巴洛克 别墅豪宅

STYLE BAROQUE
VILLA MASSION



ID Book 图书工作室 编



华中科技大学出版社

<http://www.hustp.com>

中国·武汉

本书在编写过程中，得到各位参编老师的倾力协助，特表示感谢，
以下为参编人员名单：

岳蒙 徐树仁 戴勇 方峻 刘卫军 黄书桓 欧阳毅 李宜静 蔡明宪 叶斌 叶猛
王俊钦 许光华 陈丽娜 孟繁峰 李育 蔡进盛 胡建国 郑陈顺 朱自权 潘冬东 郑敬平
陈志斌 谢琦 邱春瑞 何永明 许剑 武晓玲 余周霖 叶志应 王舟 郑福喜 黄少峰
郑豪 由伟壮 王伟 冯振勇 王敬超 廖易风 李西威 沈烤华 王小峰 王赞 马翠琴
金啸文 明朝秀 李靖云 庄祥高 李进念 叶景星 梁义 卢浩 方永杰 李莎莉 刘淑苗

图书在版编目(CIP)数据

诠释巴洛克 别墅豪宅 / ID Book 图书工作室编 —武汉：华中科技大学出版社，2014.7
ISBN 978-7-5680-0031-4

I. ①诠… II. ①I… III. ①别墅—建筑设计—作品集—中国—现代 IV. ①TU241.1

中国版本图书馆CIP数据核字(2014)第100484号

诠释巴洛克 别墅豪宅

ID Book 图书工作室 编

出版发行：华中科技大学出版社（中国·武汉）
地 址：武汉市武昌珞喻路1037号（邮编：430074）
出 版 人：阮海洪

责任编辑：赵爱华
责任校对：曾 晟

责任监印：秦 英
装帧设计：张 艳

印 刷：北京利丰雅高长城印刷公司
开 本：965 mm×1270 mm 1/16
印 张：21
字 数：268千字
版 次：2014年7月第1版第1次印刷
定 价：358.00元（USD 69.99）


华中出版

投稿热线：(010)64155588-8000 hzjztg@163.com
本书若有印装质量问题，请向出版社营销中心调换
全国免费服务热线：400-6679-118 竭诚为您服务
版权所有 侵权必究

目录



济南建邦原香溪谷 008
Toscana Holiday Phase

上海风景水岸联排别墅 016
Shanghai Scenic Waterfront Townhouse

重庆复地花屿城I 026
Chongqing Forte Huayu City I

香港信和·中央广场示范单位3 032
Hong Kong Xinhe· Central Plaza Show Flat3

中海碧林湾示范单位 036
Zhonghai Forest Bay Show Flat

中建梅溪湖壹号别墅样板间 040
CSCEC Meixi Lake No. 1 Villa Show Flat

成都东大街样板房 054
Chengdu Dongdajie Show Flat

海德公园样板房 062
Hyde Park Show Flat

九龙仓凤凰公寓B户型 068
Jiulongcang Phoenix Apartments, House Type B

融侨·外滩某住宅 076
Mansion in the Bund

086 顺迈别墅样板间六号户型
Shunmai Villa Show Flat No. 6 House Type

094 顺迈别墅样板间五号户型
Shunmai Villa Show Flat No. 5 House Type

102 香港九龙仓·时代尊邸示范单位2
Hong Kong Jiulongcang · Shidai Zundi Show Flat 2

108 白金翰
Bai Jin Han

116 保利意大利
Poly Italy

124 小步舞曲
Minuet

130 中国贵谷样板房50#04
China Guigu Show Flat 50#04

138 香港南益·紫兰湖国际高尔夫别墅示范单位1
Hong Kong Nanyi·Zilanhu International Golf Villa Show Flat 1

146 般若琉璃·星雨华府
Wisdom Colored Glaze · Silver Rain Mansion

152 富通圣堤雅别墅
Futong San Tilla Villa



CONTENTS

深邃·红橡华园示范单位 160
Deep Shadow· Show Flat of Luxury Style

北海天隆三千海泊心岸T1别墅 170
Beihai Tianlong Sanqianhai Boxin'an T1 Villa

保利大良中汇花园 178
Poly Daliang Zhonghui Garden

闽江世纪广场复式楼 188
Minjiang Century Plaza Duplex Building

温情豪宅 196
Warm Mansion

名城港湾某住宅 206
City Harbor



隐于山水间 214
Live in Seclusion in Landscape

融侨观邸别墅A户型 220
Legendary Achievements Villa, House Type A

融侨观邸别墅B户型 228
Legendary Achievements Villa, House Type B

融侨国际公馆某住宅 236
One Residence of Rongqiao International Mansion

242 中昊檀宫样板房1
Sandal Wood Private Manor Show Flat 1

252 南京依云溪谷188
Nanjing Evian Valley 188

258 香梅花园别墅
Xiangmei Garden Villa

266 镜湖山庄别墅
Mirror Lake Mountain Villa

272 泰禾红树林某住宅
A Residence of Taihe Mangrove

280 天正滨江
MIDICI Palace

292 厦门保利海上五月花
Xiamen Poly May Flower

304 浪漫满屋
All Romance in the House

314 樱花语幸福里
Cherry Blossom Happy Residence

322 中昊檀宫样板房2
Sandal Wood Private Manor Show Flat 2

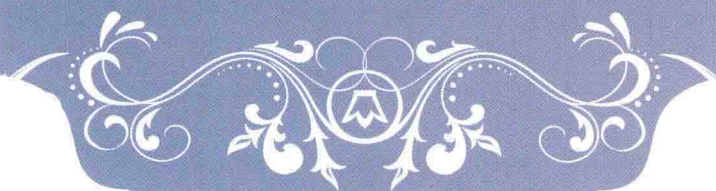
330 依云溪谷·栖园
Evian Valley·Qi Yuan





诠释巴洛克 别墅豪宅

STYLE BAROQUE
VILLA MASSION



ID Book 图书工作室 编



华中科技大学出版社

<http://www.hustp.com>

中国·武汉



TO DESCRIBE BAROQUE STYLE WITH NEW SENSUALISM

The word “Baroque” originates from Portuguese (BARROCO), just as the name suggesting, it means “irregular”. In the very beginning, it refers to pearls of eccentric forms, while in Italian language, BAROCCO has the connotations of being peculiar, eccentric and deformed. Baroque style abandons the bold, tall and straight, solemn and old-fashioned traits of Neo-Classicism in modeling. Baroque style has as design starting point of Romantic spirits, acquires mild and soft emotional appeals, pursues dynamic decorative patterns, thus setting off sublime, vivid, energetic, bold and unrestrained artistic effects. It not only possesses luxurious and religious features, but also owns colors hedonism. It is some enthusiastic art, yet breaking through rational tranquility and harmony, with profound romantic atmosphere, which challenges the designer’s comprehensive abilities to a large scale.

As a customized independent style residence, villa and mansion should not only represent the host’s life pursuits, but also reflect the cultural connotations. This makes me think of a familiar sentence in the film “Personal Tailor” starred by Ge You: “With a personal tailor, no regrets in your life.” With the constant clashes of eastern and western cultures, every successful human being with romantic feelings would have higher functional requirements and spiritual pursuits for real life and a home full of emotional appeals. Villa and mansion would not only manifest habitants’ extraordinary status, but also meet with people’s high-end and aristocratic high-quality life pursuits. Its exclusive features include that of human cares in the first place. For most domestic mansion designs, although they are gorgeous and magnificent, there exists the feel of “being lonely at the top.” Upon entering the space, you can only find the luxury, but you can not experience the warm feelings of home furnishing. The reason lies in that the creation of designer for life atmosphere is not in place. In the second place is the mastering of whole style and atmosphere. Mansion design is not represented in the appearance of gold and silver decoration, but in the appropriate whole

style and atmosphere. In the third place is the focus on details. An object is delicate in the exquisite detail parts, which can be treatment of the corners, or detail planning towards residential functions. The fourth part is high-tech facilities and equipments, such as intelligent lighting control system, central dust removal system, intelligent household appliances control system, intelligent security control system, etc. These low-profile high-tech products hidden inside the space could bring some convenience for life. The fifth part is the valuable artistic objects which could uplift space quality and values. The sixth part is the emphasis on function division and privacy.

For these many years in the profession, with innovative New Sensualism as the innovative theory, I advocate the creation of artistic space via emotional aesthetics, which aesthetic orientation is composed of human-oriented orientation and text-oriented orientation. The former one has as subject human’s sensual ego, represented in non-rational and transcendental aesthetic dimension. While the latter one has as subject the texts, represented in formalized and verbalized aesthetic dimension. I delve into the research on the relationship of emotions and objects, emotions and theories, have space’s physical existence as the common ground for the unification of space users’ emotions and interior decoration objects, instill people’s sensual experiences into the space creation and rationalize the innovative patterns of representation, thus attaining the artistic and practical balance for the space.

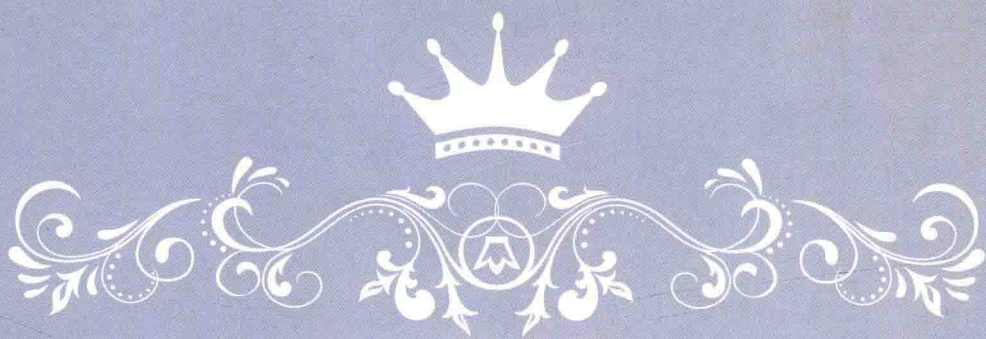
It would be quite appropriate for me to interpret Baroque style with New Sensualism’s Emotional Aesthetics.

While in design, cultural art belongs to the layer of spiritual emotions and residential space belongs to the layer of physical application, the combination of both parts can attain the perfect conditions.

PINKI Interior Design & American IARI Interior Design Co.,Ltd.
Danfu Liu

PREFACE |





新感官主义演绎巴洛克

“巴洛克”一词最早来源于葡萄牙语（BARROCO），顾名思义就是“不合常规”。最初特指形状怪异的珍珠，在意大利语（BAROCCO）中又有奇特、古怪、变形等解释。巴洛克风格摒弃了古典主义造型艺术上的刚劲、挺拔、肃穆、古板的遗风，追求宏伟、生动、热情、奔放的艺术效果。巴洛克，以浪漫主义精神为设计的出发点，并赋予亲切柔和的抒情情调，追求跃动型装饰样式，以烘托宏伟、生动、热情、奔放的艺术效果。它既有豪华、宗教的特色，又有享乐主义的色彩；它既是一种激情的艺术，又打破了理性的宁静与和谐，具有浓郁的浪漫主义色彩，非常考验设计师的综合能力。

别墅豪宅作为一种私人定制的独立式住宅，不仅要体现主人的生活情怀，更要折射出文化的内涵，这不禁让我联想到葛优主演的电影《私人定制》里最经典的一句话：“私人定制，让你的人生不留遗憾”，如今东西方文化的不断碰撞，使每一位有着浪漫情怀的成功人士对于真实的生活和富于情感的家，有着更高的功能需要和精神需求。别墅豪宅不仅彰显居住者非凡的身份，更满足了其对华贵高端生活的追求。它所独有的特征就是：首先是人性的关怀。国内大多数的豪宅设计，虽然富丽堂皇，但却总有点高处不胜寒的感觉。步入其中只能感到豪华，却感受不到家居的温馨。究其原因，在于设计者对于生活氛围的营造不够到位。其次是对整体风格和气氛的把握。豪宅设计不是体现在贴金镶银的表面，而在于恰如其分的整体风格和气氛。其三是要注重

细节。一件东西之所以精致，在于其对细节的独特演绎，这种细节，可以是边角的处理，亦可以是对居住功能的细节规划。其四是高科技的设施配备。例如智能灯光控制系统、中央除尘系统、智能化家电控制系统和智能安全控制系统等。这些隐于室内毫不张扬的高科技产品能为生活带来便利。其五，一些有价值的艺术品，也会提升空间的品质与价值。最后，注重空间的功能分区和私密性。

从业多年来，我以“创新感官主义”为创意理论，主张以“情感美学创造艺术空间”，其美学取向分为人本取向与文本取向两种。人本取向以人的感性自我为主体，表现为非理性和先验化的审美向度；文本取向以文本为主体，表现为形式化与语言化的审美向度。深入研究情与物、情与理的关系，以空间实体存在作为空间使用者的情感与室内装饰品相统一的基础，将人的五感体验注入空间创作，将创意表现形式特征加以理性化，使空间艺术性与实用性达到平衡。

我想用新感官主义·情感美学演绎巴洛克，是合适的。

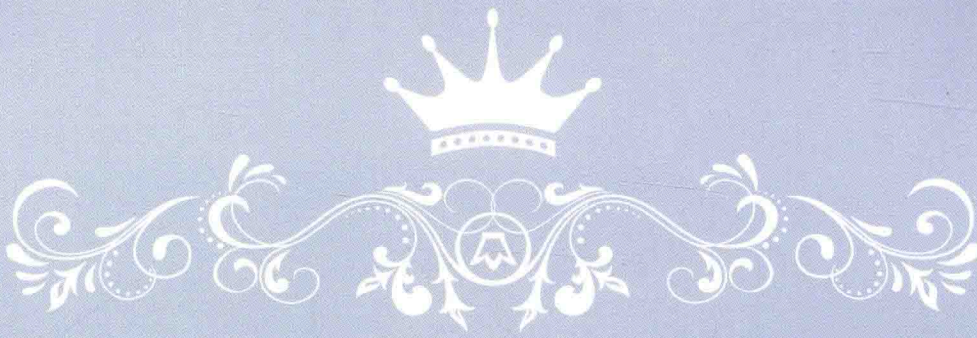
在设计中，文化艺术属于精神情感层面，居住空间属于物质使用层面，两者相结合方能达到最佳的状态。

品伊创意集团&美国IARI刘卫军设计事务所

刘卫军

前言 |





FAR BEYOND STYLE

As far as Baroque is concerned, we would think of complicated curves, intensive colors, light and shadow and magnificent decorations -- Free, bold and unrestrained tones are combined as a whole with expressions of secular interests. Baroque style born in the thriving Roman times displays the charms of Romanticism to the full.

History always moves along and along and the stories are largely identical but with minor differences. I once stopped before some ancient Italian buildings for quite a long time and could not bear to leave. Magnificence and graveness are just attraction for an instant, I stopped there appreciating those dynamic lines and the stories hidden behind the colors which remain gorgeous through many centuries. Be it church or opera house of the Middle Ages, or Chinese urban private courtyard of prosperous 21st century, the performance of Baroque style is so natural and spontaneous, with its unshakable status. We can say that it is showing off the fortune, or that it is pursuing originality, the obvious impetus and passion which seem to spurt out all at once would always make people attain some more expectations and imaginations for life.

Baroque style breaks through rational tranquility and harmony, which stresses on variations and applications of various artistic approaches, being exquisite and unconventional. Baroque style entrusts the designers with more opportunities to stand out. Just like preparing a grand banquet with his own

hands, from selection of graphic composition to materials, to application of colors, light and shadow, to decorations of nearly every corner, every procedure is so abundant and colorful. Based on that, whenever I find some excellent design works of Baroque style full of inspirations, I cannot help springing up and shouting "Bravo" just like after watching a game of FA Premier League or UEFA Champions League!

In design, even if it is full of contrasts of sense and sensibility, or confrontation of romance and reality, during a time with people's multilevel and diversified aesthetic interests, those magnificent colors, dynamic lines and enthusiastic scenes of life out of details' rendering would inevitably touch the heart of people with a love for life. You may reject a style, but you can never reject the vivid life itself.

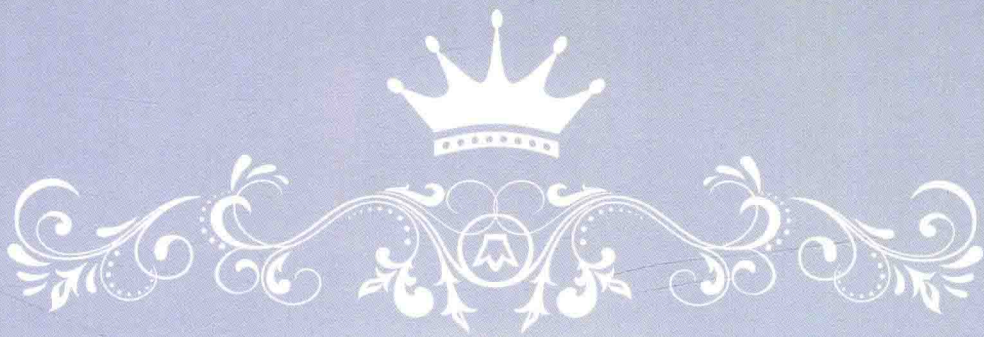
Thus, for artists, for designers, Baroque is not a symbol, nor a style, it is far beyond style.

Noah Fong

Hong Kong Fong Wong Architects & Associates

PREFACE II





于风格之上

提及巴洛克，我们想到的是：繁复的曲线，强烈的色彩、光影、华丽的装饰——充满自由奔放的格调与表达世俗情趣的张扬结合为一体。诞生于繁盛罗马时代的巴洛克风格，将浪漫主义的情怀表达得淋漓尽致。

历史总是周而复始，故事也是大同小异。我曾长时间驻足于意大利的某些古建筑前不忍离去，恢宏庄重是一瞬间的吸引，更多的驻足是为品读那些充满动态的线条，以及穿越数个世纪仍艳丽无比的色彩背后的故事。无论是穿越到中世纪的教堂、歌剧院，还是在同样繁盛的21世纪中国都市的私家庭院，巴洛克的演绎都是水到渠成，且自有它撼动不了的地位。说其炫耀财富也罢，说其追求新奇也罢，那一种毫无掩饰、似要喷薄而出的动力和激情，总是令人对生命充满更多的盼望与想象。

巴洛克打破了理性的宁静与和谐，它强调变化，强调各种艺术手段的运用，精致考究，标新立异。巴洛克给予了设计师更多显山露水的机会，就像要亲手烹制

一场饕餮盛宴，从构图到材料的选择，从色彩与光影的调配，到几乎是每一个犄角旮旯的装饰，每一道程序都是如此的丰富与精彩。为此，每每看到一些几乎穷尽设计师灵感的优秀的巴洛克风格设计作品，都像看了一场英超或欧冠一样忍不住想跳起来叫好！

在设计中，即便是充满理性与感性的冲突、浪漫与现实的对峙，在人们的审美意趣已是如此多层次、多元化的时代，那些瑰丽的色彩、充满动感的线条，被细节渲染而显得奔放热烈的生活场景，仍是如此不可遏制地击中了那些热爱生命的人。你可以拒绝一种风格，但不可拒绝鲜活的生命本身。

因此，巴洛克之于艺术家，之于设计师，它不是一个符号，也不唯是一种风格，它远在于风格之上。

香港方黄建筑师事务所

方峻

前言 II



目录



济南建邦原香溪谷 008
Toscana Holiday Phase

上海风景水岸联排别墅 016
Shanghai Scenic Waterfront Townhouse

重庆复地花屿城I 026
Chongqing Forte Huayu City I

香港信和·中央广场示范单位3 032
Hong Kong Xinhe· Central Plaza Show Flat3

中海碧林湾示范单位 036
Zhonghai Forest Bay Show Flat

中建梅溪湖壹号别墅样板间 040
CSCEC Meixi Lake No. 1 Villa Show Flat

成都东大街样板房 054
Chengdu Dongdajie Show Flat

海德公园样板房 062
Hyde Park Show Flat

九龙仓凤凰公寓B户型 068
Jiulongcang Phoenix Apartments, House Type B

融侨·外滩某住宅 076
Mansion in the Bund

086 顺迈别墅样板间六号户型
Shunmai Villa Show Flat No. 6 House Type

094 顺迈别墅样板间五号户型
Shunmai Villa Show Flat No. 5 House Type

102 香港九龙仓·时代尊邸示范单位2
Hong Kong Jiulongcang · Shidai Zundi Show Flat 2

108 白金翰
Bai Jin Han

116 保利意大利
Poly Italy

124 小步舞曲
Minuet

130 中国贵谷样板房50#04
China Guigu Show Flat 50#04

138 香港南益·紫兰湖国际高尔夫别墅示范单位1
Hong Kong Nanyi·Zilanhu International Golf Villa Show Flat 1

146 般若琉璃·星雨华府
Wisdom Colored Glaze · Silver Rain Mansion

152 富通圣堤雅别墅
Futong San Tilla Villa



CONTENTS

深邃·红橡华园示范单位 160
Deep Shadow· Show Flat of Luxury Style

北海天隆三千海泊心岸T1别墅 170
Beihai Tianlong Sanqianhai Boxin'an T1 Villa

保利大良中汇花园 178
Poly Daliang Zhonghui Garden

闽江世纪广场复式楼 188
Minjiang Century Plaza Duplex Building

温情豪宅 196
Warm Mansion

名城港湾某住宅 206
City Harbor



隐于山水间 214
Live in Seclusion in Landscape

融侨观邸别墅A户型 220
Legendary Achievements Villa, House Type A

融侨观邸别墅B户型 228
Legendary Achievements Villa, House Type B

融侨国际公馆某住宅 236
One Residence of Rongqiao International Mansion

242 中昊檀宫样板房1
Sandal Wood Private Manor Show Flat 1

252 南京依云溪谷188
Nanjing Evian Valley 188

258 香梅花园别墅
Xiangmei Garden Villa

266 镜湖山庄别墅
Mirror Lake Mountain Villa

272 泰禾红树林某住宅
A Residence of Taihe Mangrove

280 天正滨江
MIDICI Palace

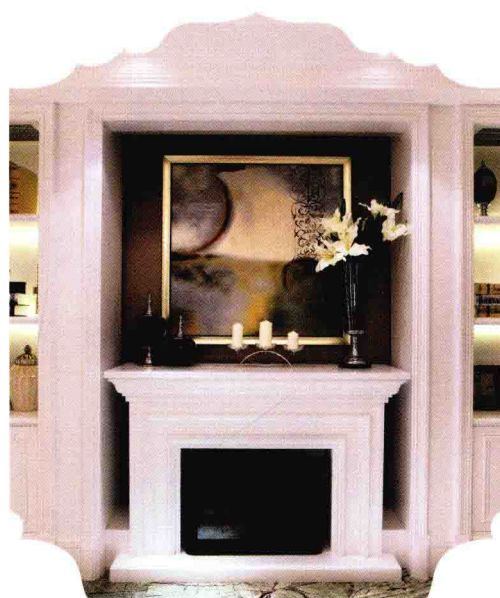
292 厦门保利海上五月花
Xiamen Poly May Flower

304 浪漫满屋
All Romance in the House

314 樱花语幸福里
Cherry Blossom Happy Residence

322 中昊檀宫样板房2
Sandal Wood Private Manor Show Flat 2

330 依云溪谷·栖园
Evian Valley·Qi Yuan



Style Baroque
Villa Massion



TOSCANA HOLIDAY PHASE

济南建邦原香溪谷

Design Company: Jinan Imaging Space Planning

Designer: Yue Meng

Project Location: Jinan of Shandong Province

Project Area: 200 m²

Major Materials: Spray Lacquer, Gold Paint,

Antirust Paint, Blue Varnish, Croatia Beige

Marble, White Marble, Gray Marble, Cork, Oak

White Veneer, Silver Mirror, Wired Glass,

Black Wired Stainless Steel,

Mirror Surface

设计公司: 济南成象设计

设计师: 岳蒙

项目面积: 200 m²

项目地点: 山东济南

主要材料: 白色混油、金漆、防锈漆、
蓝色亮光漆、克罗地亚米黄大理石、

白色大理石、灰色大理石、

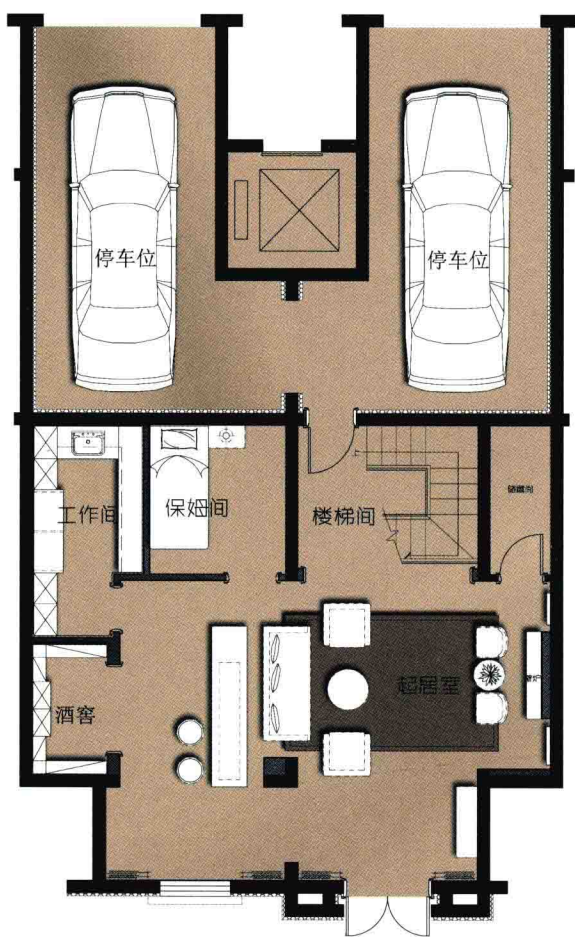
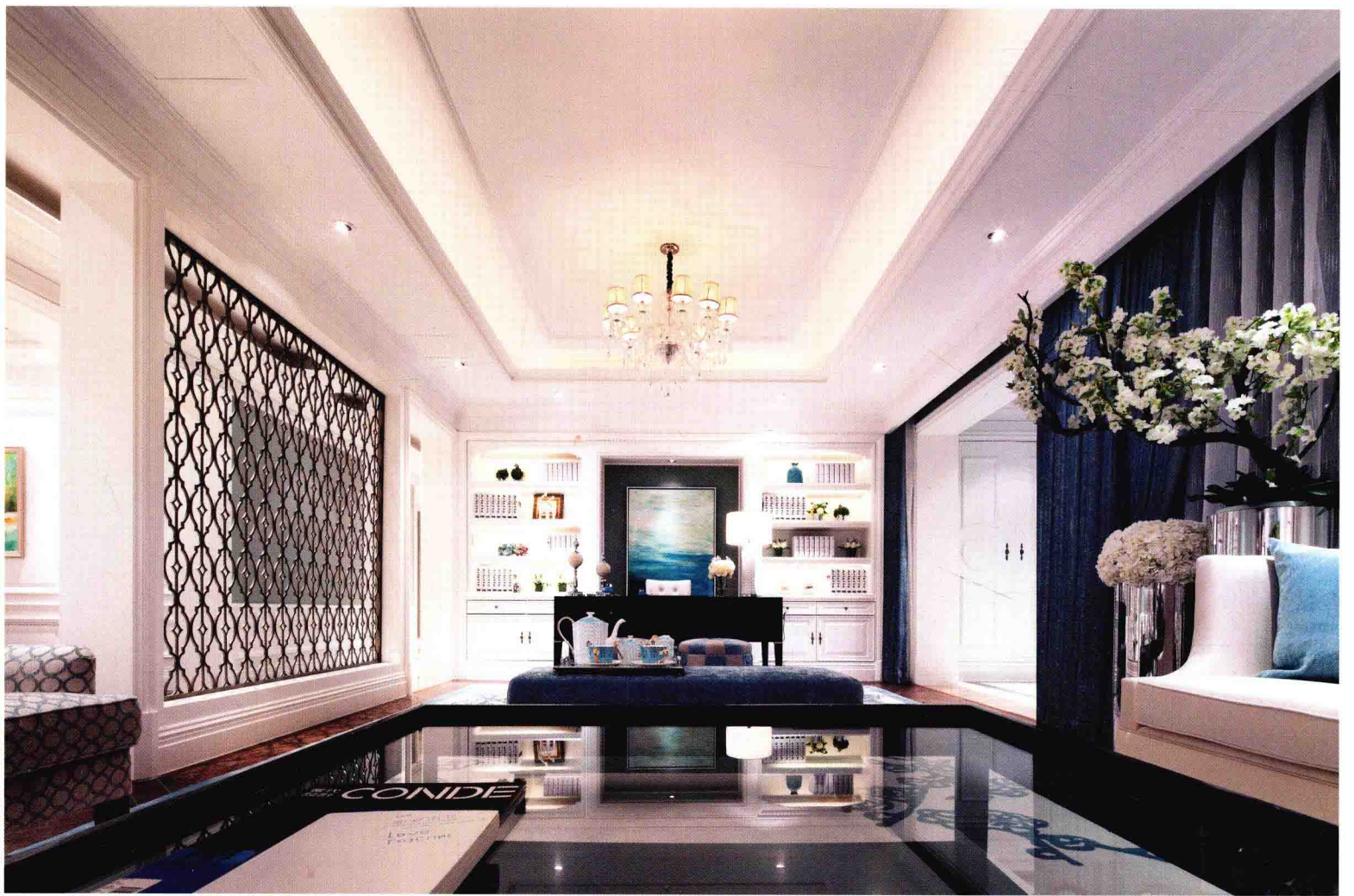
软木、橡木搓白饰面、

银镜、夹丝玻璃、

黑色拉丝不锈钢、

镜面不锈钢







本案面积约为 200 m²，空间以白色与米色为基调。入户玄关处设置了完整的收纳空间，既满足了主人的收纳功能，又展现了空间的完整性。

客厅空间明亮的色彩基调象征着一种积极的生活态度。餐厅为独立的就餐空间，设计师增强了空间的围合度，以营造出家庭化的就餐氛围。

厨房分独立的中厨和西厨区，西厨区的设置，既可以完善家庭生活的功能化要求，又可以展示酒水、收藏品和艺术品，提高住宅的艺术品位，彰显出主人的较高的审美素养。

主卧室以蓝色为主，营造出一种平静的私密氛围。整个空间为不规则的形式，使整个空间更具情趣性。主卧室外的走廊形成一种玄关的心理感受。既增强了空间的层次感，又使得卧室的空间划分更加合理。

