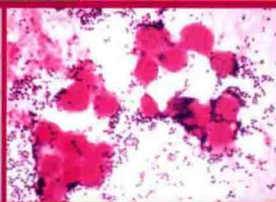
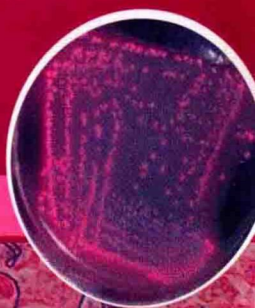


SHOUYI LINCHUANG BINGYUAN WEISHENGWU
ZHENDUAN JISHU JI TUPU

兽医临床病原微生物 诊断技术及图谱

王金和 主编

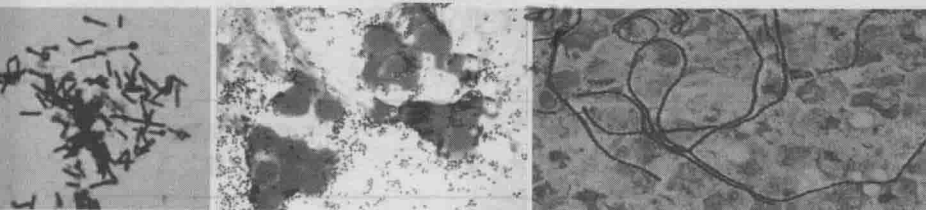


化学工业出版社

SHOUYI LINCHUANG BINGYUAN WEISHENGWU
ZHENDUAN JISHU JI TUPU

兽医临床病原微生物 诊断技术及图谱

王金和 主编



化学工业出版社

·北京·

图书在版编目 (CIP) 数据

兽医临床病原微生物诊断技术及图谱/王金和主编,
北京: 化学工业出版社, 2012. 4
ISBN 978-7-122-13678-7

I. 兽… II. 王… III. 兽医学-病原微生物-诊断-
图谱 IV. S852.6-64

中国版本图书馆 CIP 数据核字 (2012) 第 032550 号

责任编辑: 邵桂林
责任校对: 陶燕华

文字编辑: 焦欣渝
装帧设计: 韩 飞

出版发行: 化学工业出版社 (北京市东城区青年湖南街 13 号 邮政编码 100011)
印 装: 北京云浩印刷有限责任公司
850mm×1168mm 1/32 印张 7½ 彩插 8 字数 206 千字
2012 年 8 月北京第 1 版第 1 次印刷

购书咨询: 010-64518888 (传真: 010-64519686)

售后服务: 010-64518899

网 址: <http://www.cip.com.cn>

凡购买本书, 如有缺损质量问题, 本社销售中心负责调换。

定 价: 28.00 元

版权所有 违者必究

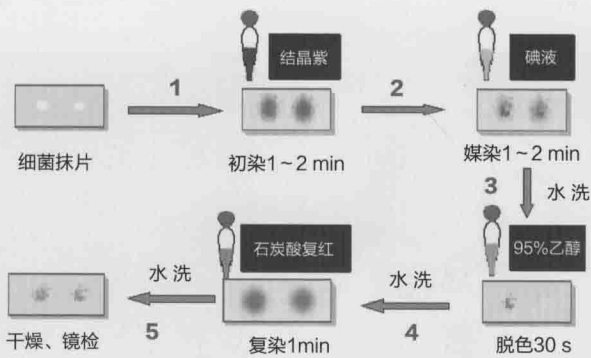


图1-10 细菌革兰染色方法步骤示意图

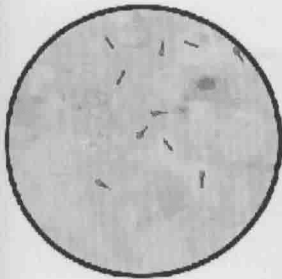


图1-11 芽孢染色结果

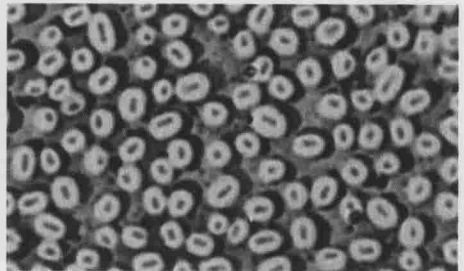


图1-12 Anthony 荚膜染色

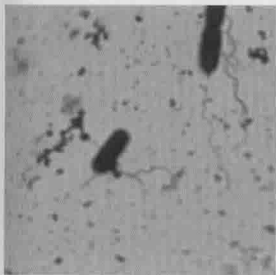


图1-13 鞭毛硝酸银染色结果



图1-14 麻风分枝杆菌的抗酸性染色

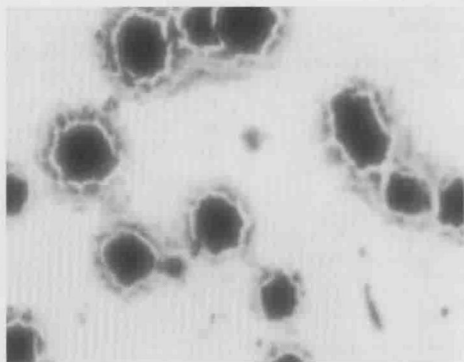


图1-15 鸡毒支原体吉姆萨染色液染色
(形态、大小不一紫红色菌体)

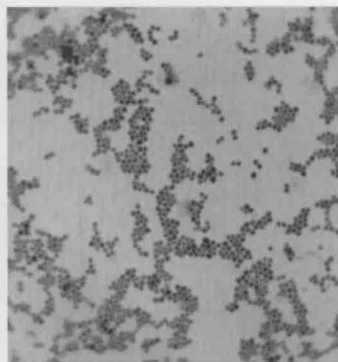


图1-20 金黄色葡萄球菌镜下形态
(革兰染色)

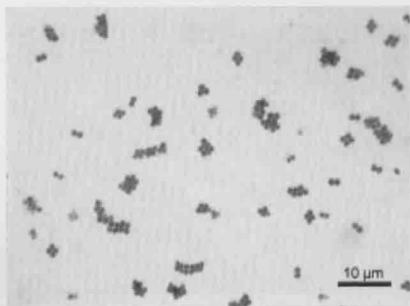


图1-21 金黄色葡萄球菌短链排列
(液体培养基、革兰染色)

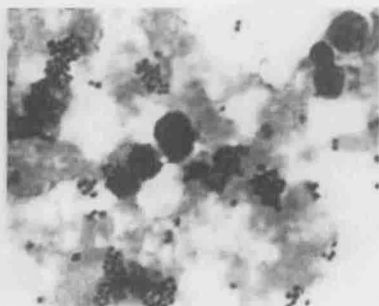


图1-22 脓汁中成对排列的葡萄球菌
(革兰染色)

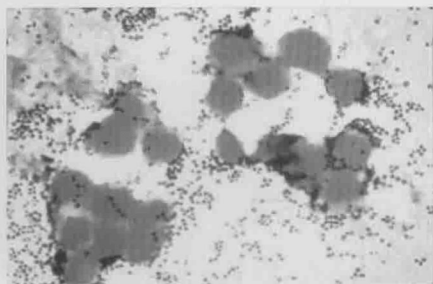


图1-23 脓汁中短链排列的葡萄球菌
(革兰染色)

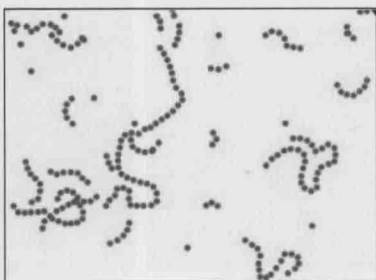


图1-24 链球菌的典型链状形态
(革兰染色)

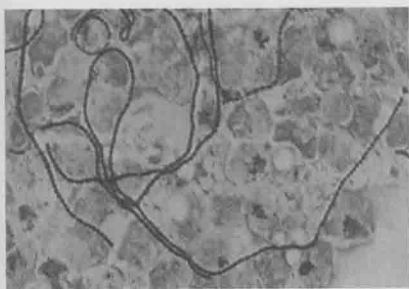


图1-25 病料中的长链链球菌
(革兰染色)

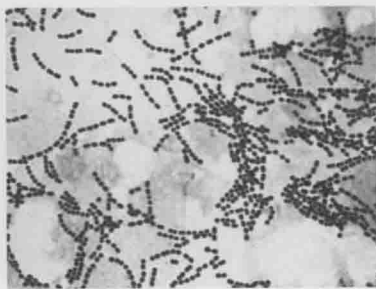


图1-26 脓汁中的短链链球菌
(革兰染色)

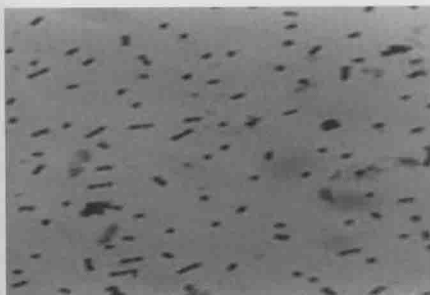


图1-27 猪链球菌固体培养物染色
(革兰染色)

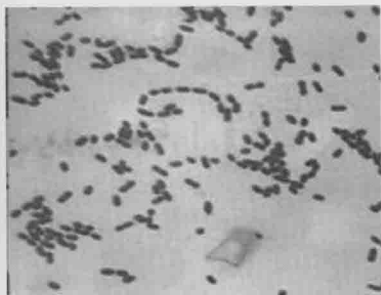


图1-28 病料中的链球菌，长短不一
(革兰染色)

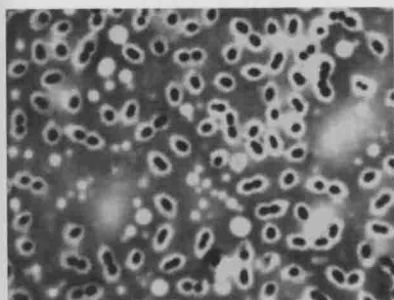


图1-29 肺炎链球菌的厚荚膜

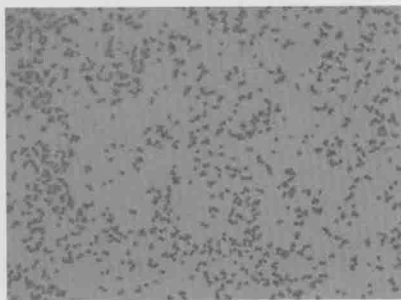


图1-30 大肠杆菌
(革兰染色)

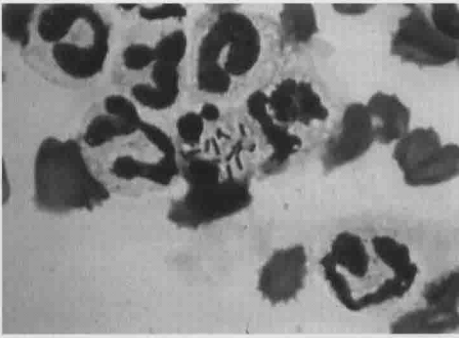


图1-46 病料中李氏杆菌镜下
“V”形排列
(美蓝染色)

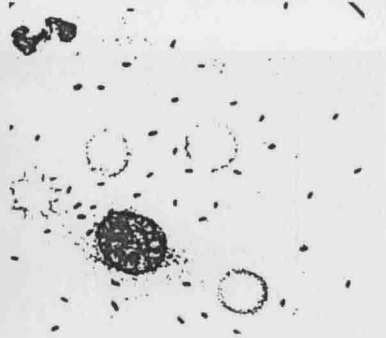


图1-47 病料中的布氏杆菌
(美蓝染色)

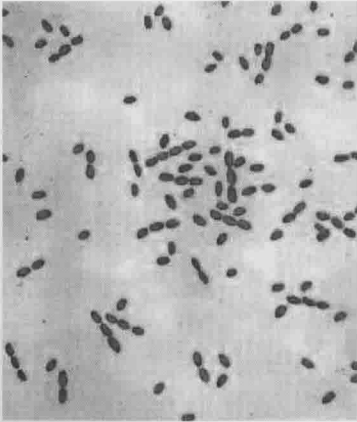


图1-48 布氏杆菌
(革兰染色)

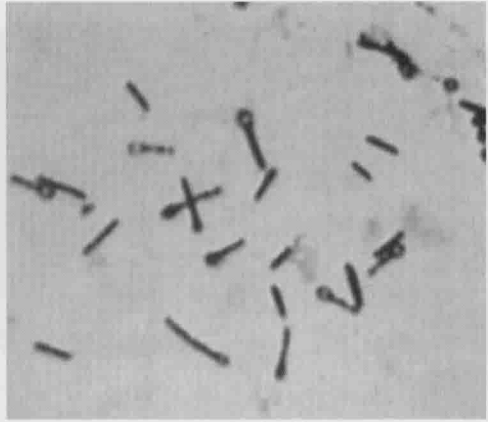


图1-49 破伤风杆菌
(芽孢染色)

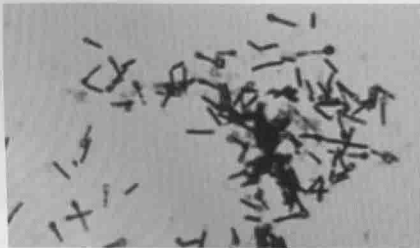


图1-50 破伤风杆菌
(革兰染色)

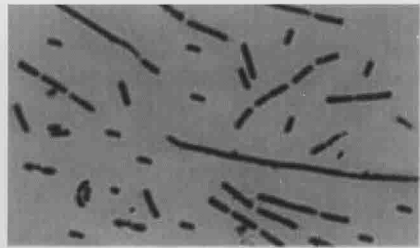


图1-51 培养24h的破伤风杆菌
(革兰染色)

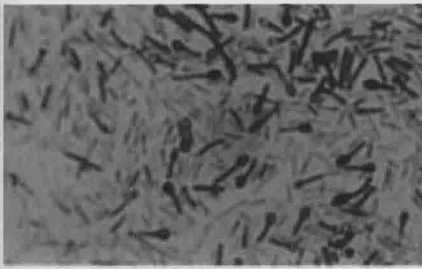


图1-52 培养48h的破伤风杆菌
(革兰染色)

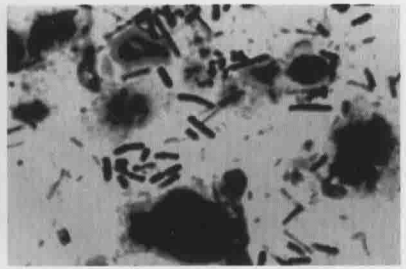


图1-53 仔猪梭菌性肠炎病料涂片
(革兰染色)

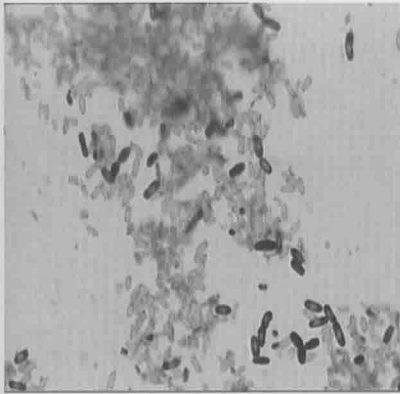


图1-54 产气荚膜梭菌的芽孢
(革兰染色)

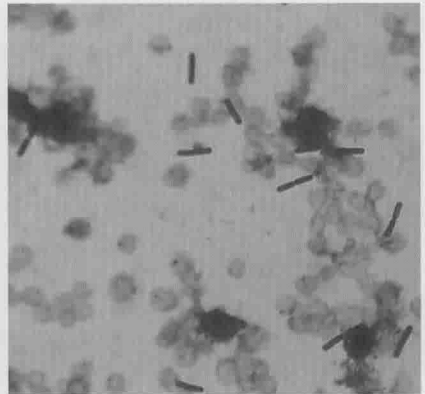


图1-55 病料中成对排列的
产气荚膜梭菌
(革兰染色)

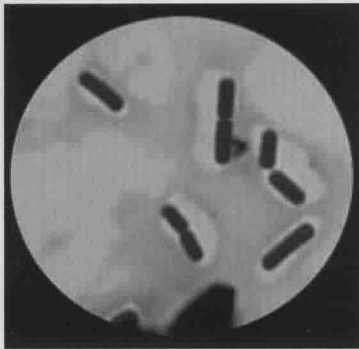


图1-56 产气荚膜梭菌的荚膜
(革兰染色)

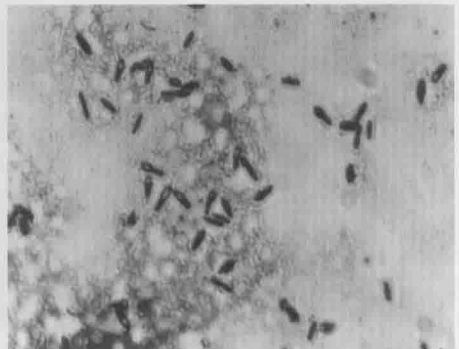


图1-58 肉毒梭菌
(革兰染色)

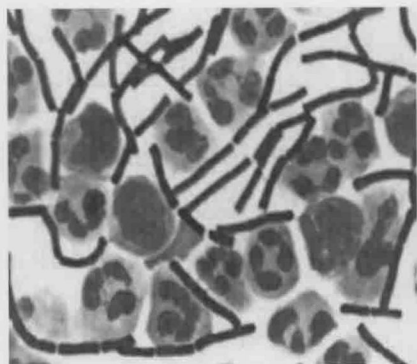


图1-59 病料中的炭疽杆菌
(革兰染色)

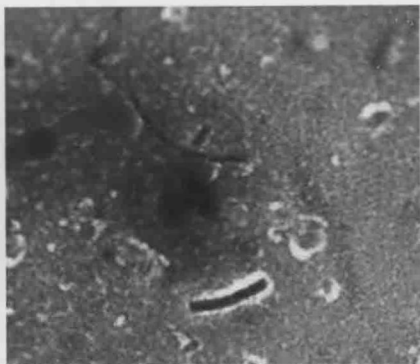


图1-60 炭疽杆菌的荚膜

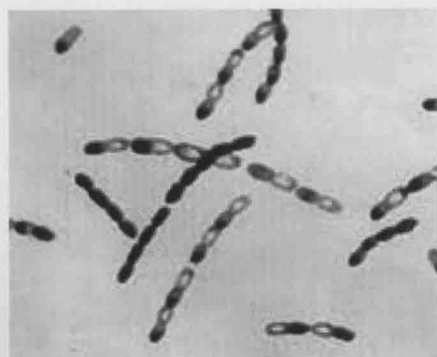


图1-61 炭疽杆菌
(美蓝染色)

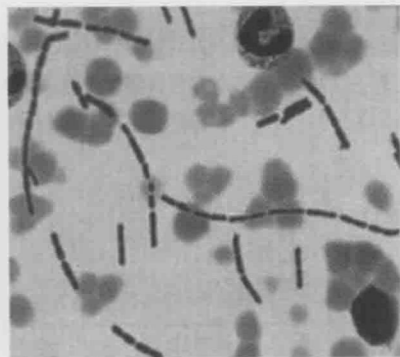


图1-62 动物血液中炭疽杆菌涂片
(革兰染色)

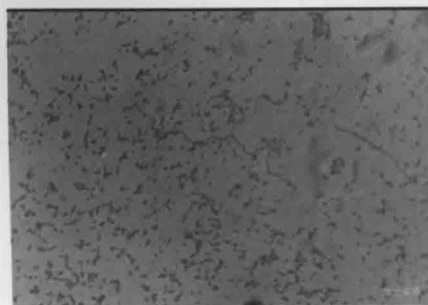


图1-63 嗜血杆菌的多形性
(革兰染色)



图1-64 副嗜血杆菌
(革兰染色)



图1-65 痰中结核分枝杆菌涂片
(抗酸性染色)

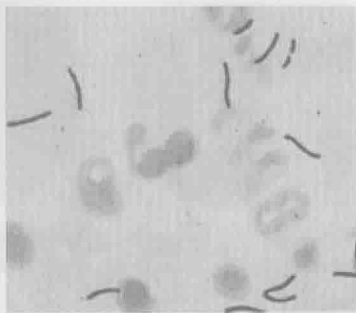


图1-66 病料中结核分枝杆菌涂片
(抗酸性染色)

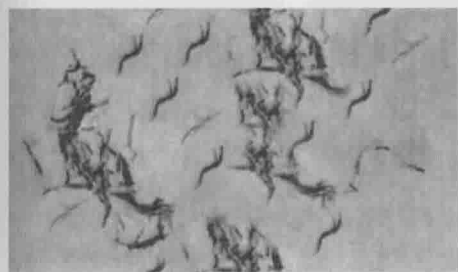


图1-67 结核分枝杆菌纯培养镜下形态
(抗酸性染色)

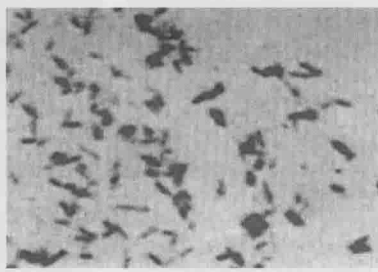
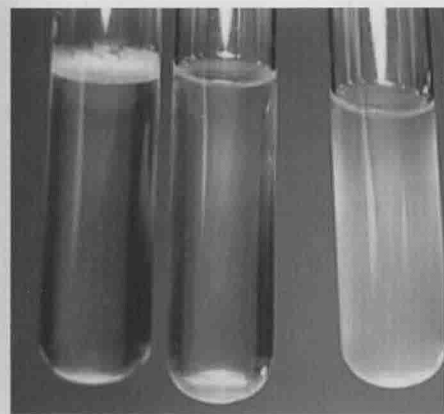


图1-68 牛结核分枝杆菌纯培养镜下形态
(抗酸性染色)



菌膜 沉淀 混浊

图1-80 细菌在液体培养基生长表现

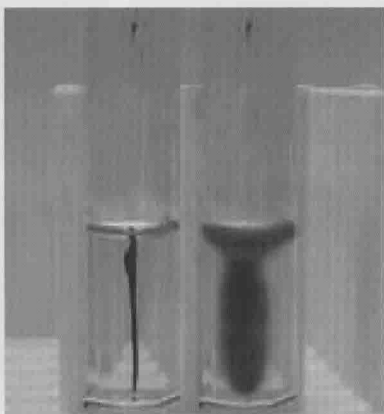


图1-81 左为无鞭毛菌，
右为有鞭毛菌

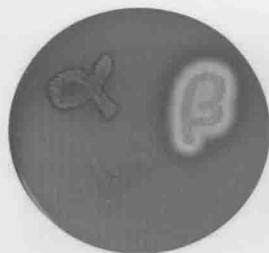


图1-83 细菌在血琼脂的溶血类别



图1-84 金黄色葡萄球菌在普通营养琼脂菌落特征



图1-85 金黄色葡萄球菌在血琼脂形成溶血环



图1-86 猪链球菌的露珠样菌落

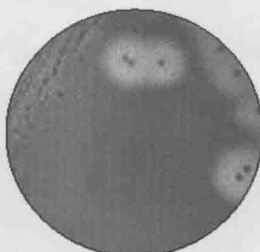


图1-87 猪链球菌的β溶血环

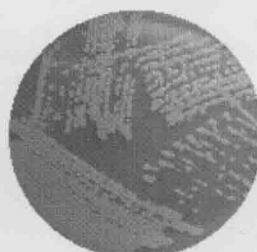


图1-88 大肠杆菌普通营养琼脂菌落



图1-89 大肠杆菌伊红美蓝琼脂紫黑色菌落

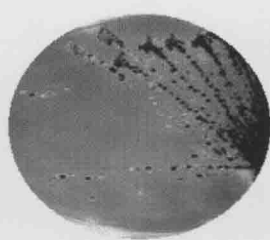


图1-90 大肠杆菌SS琼脂红色菌落
(黑色菌落为沙门菌)



图1-91 大肠杆菌麦康凯琼脂红色菌落



图1-92 大肠杆菌血琼脂菌落



图1-93 沙门菌在麦康凯平板上的无色菌落



图1-94 沙门菌在SS平板上的黑色菌落
(红色为大肠杆菌)

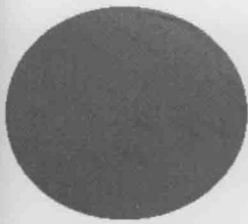


图1-95 普通培养基上生长贫瘠

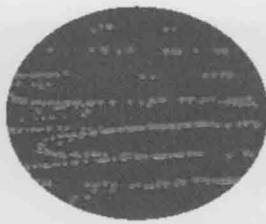


图1-96 多杀性巴氏杆菌在血琼脂平板上的菌落

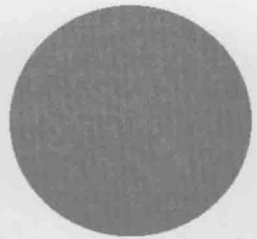


图1-97 猪丹毒杆菌在血琼脂平板上的菌落及 α 溶血环

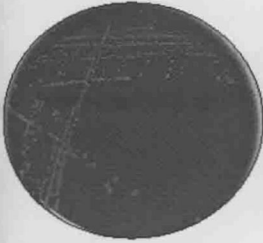


图1-98 产单核李氏杆菌血琼脂上菌落

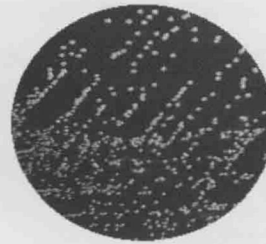


图1-99 布氏杆菌血琼脂的闪光菌落



图1-100 破伤风杆菌血平板的卷曲细丝状菌落



图1-101 破伤风杆菌血平板的“羽毛”状菌落

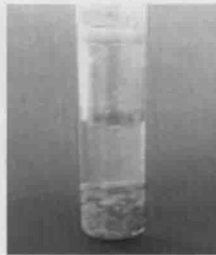


图1-102 疱肉培养基特征

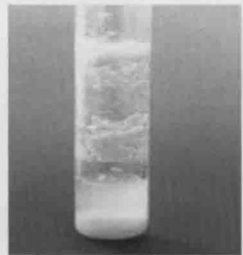


图1-103 “汹涌发酵”



图1-104 产气荚膜梭菌血琼脂菌落



图1-105 产气荚膜梭菌血琼脂双溶血环



图1-106 嗜血杆菌在巧克力琼脂上的菌落



图1-107 嗜血杆菌在鲜血琼脂上的“卫星现象”

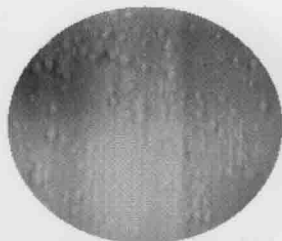


图1-108 结核杆菌
“颗粒”状菌落
(罗氏培养基)

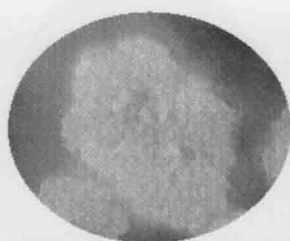


图1-109 结核杆菌
“花菜”状菌落
(罗氏培养基)

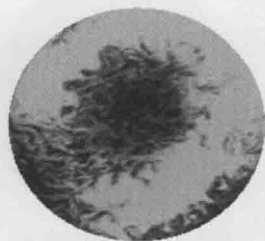


图1-110 炭疽杆菌
“卷发”状菌落

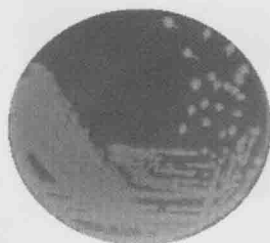


图1-111 炭疽杆菌在
普通营养琼脂上形成
“光滑”型菌落

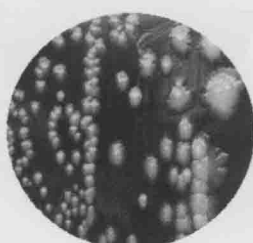


图1-112 炭疽杆菌血琼
脂平板菌落，不溶血

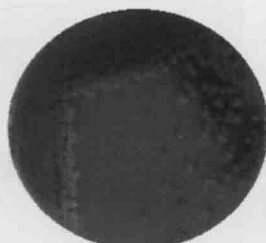
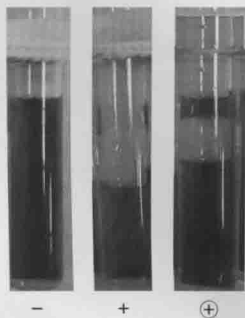


图1-113 炭疽杆菌血琼
脂平板菌落，微溶血



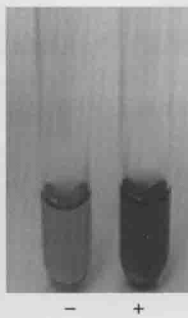
- + ⊕

图1-114 糖发酵试验结果
- 不发酵； + 产酸； ⊕ 产酸产气



- +

图1-115 M.R
试验结果



- +

图1-116 V-P
试验结果

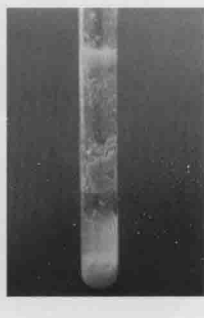


图1-117 产气荚膜
梭菌在牛乳培养基中
“汹涌”发酵

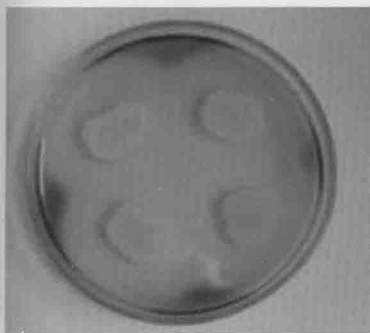


图1-118 地衣芽孢杆菌水解淀粉产生的透明圈

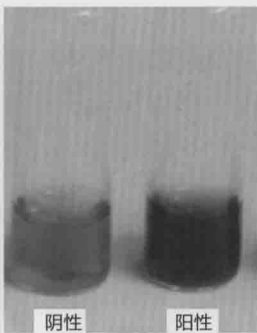


图1-119 七叶苷试验结果



图1-120 吲哚试验结果

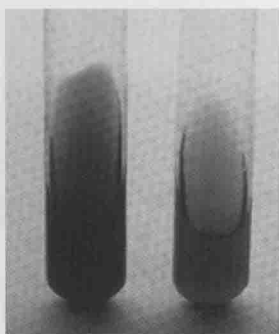
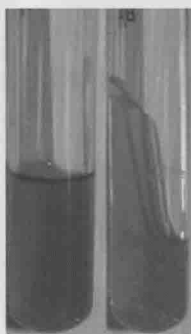


图1-121 硫化氢试验结果

图1-122 尿素酶试验结果

图1-123 左为凝固，右为明胶液化

图1-124 枸橼酸盐利用试验结果

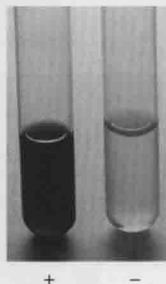
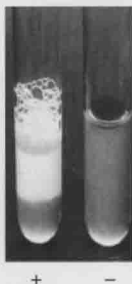
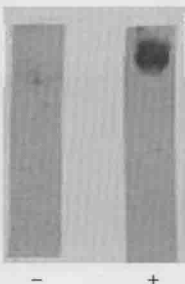
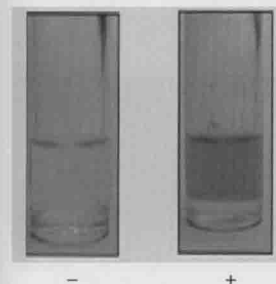


图1-125 马尿酸钠水解试验结果

图1-126 氧化酶试验结果

图1-127 触酶试验

图1-128 硝酸盐还原试验

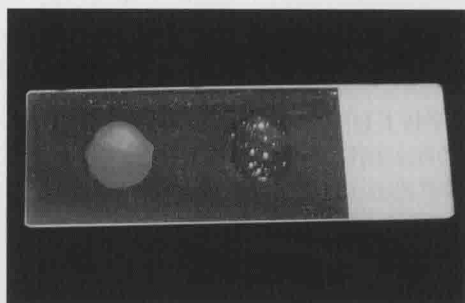


图1-129 凝固酶试验 (玻片法)
右侧为阳性 (形成小凝块), 左侧为阴性对照

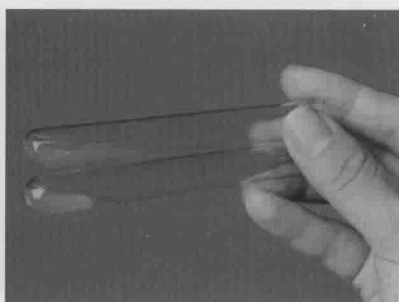


图1-130 凝固酶试验 (试管法)
下方为阳性 (凝固, 不流动), 上方为阴性对照

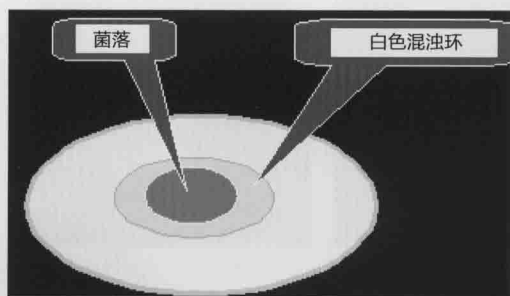


图1-131 卵磷脂酶试验结果示意图

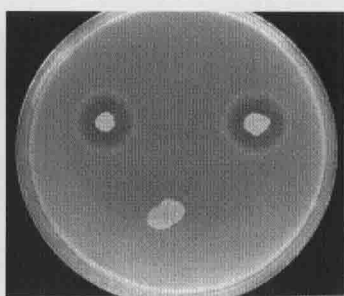
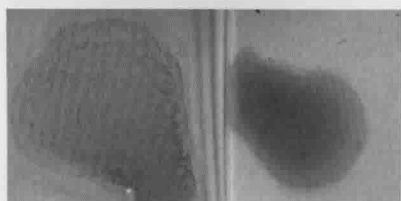


图1-132 金黄色葡萄球菌
DNA酶试验



阳性

阴性

图1-155 布氏杆菌虎红平板凝集试验
结果示意图

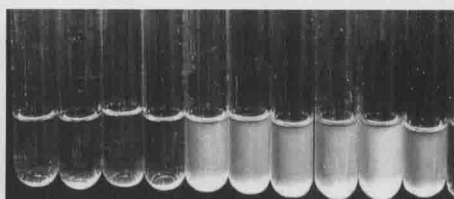


图1-162 MIC测定的试验结果
左起第4管为药物最低浓度而无细菌生长,
即待检菌的MIC



图2-1 红色毛癣菌感染部位
皮屑的直接镜检处理 (KOH处理)



图2-2 紫色毛癣菌病发标本
直接压片镜检



图2-3 絮状表皮毛癣菌
纯培养镜下形态
(乳酸酚棉蓝染色)



图2-4 犬小孢子菌纯培养镜
下形态

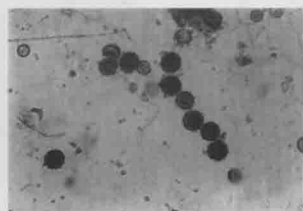


图2-6 组织胞浆菌乳酸
酚棉蓝染色

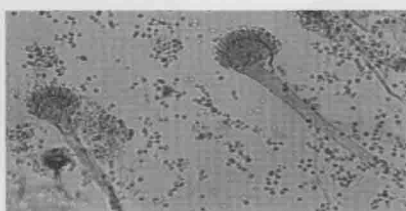


图2-12 烟曲霉镜下形态
(乳酸酚棉蓝染色)

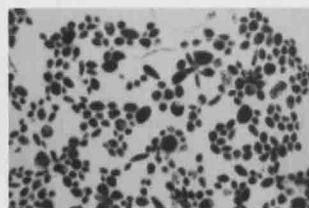


图2-13 念珠菌培养物革兰染色
(400倍)

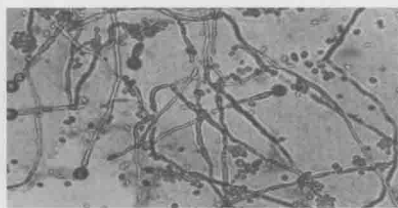


图2-14 白色念珠菌镜下形态

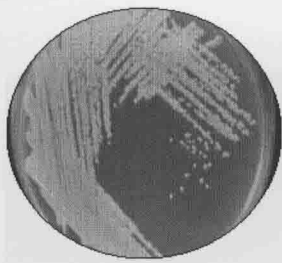


图2-18 葡萄糖琼脂培养基 (PDA)

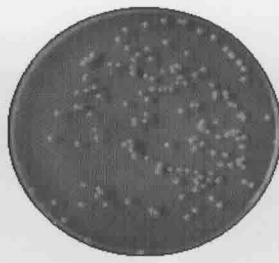


图2-19 PYE培养基

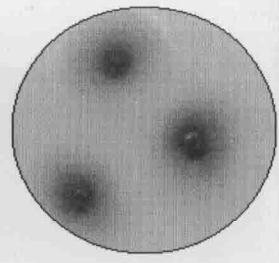


图2-20 葡萄糖琼脂培养基 (PDA)

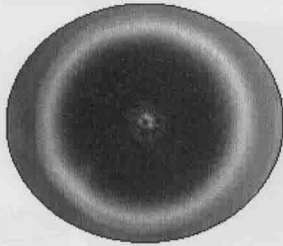


图2-21 烟曲霉灰绿色菌落

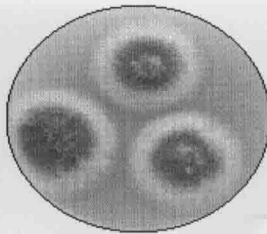


图2-22 黄曲霉在PDA上的菌落 (2周)

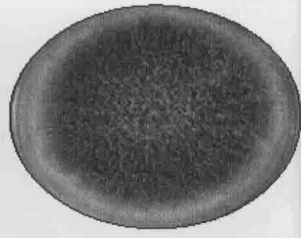


图2-23 黄曲霉暗绿色菌落

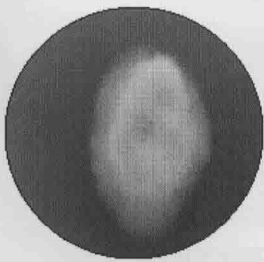


图2-24 毛癣菌在SDA上的菌落 (7~10天)

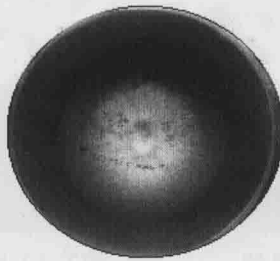


图2-25 犬小孢子菌在SDA上的菌落 (7~10天)

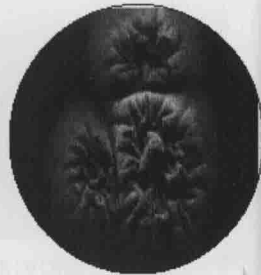


图2-26 絮状表皮癣菌在SDA上的菌落

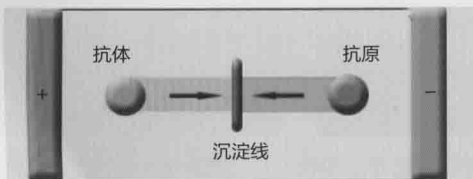


图3-26 对流免疫电泳结果示意图