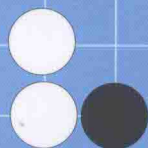
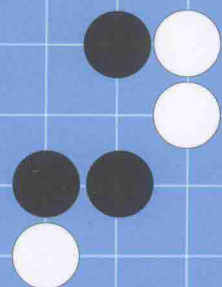


围棋阶梯练习

提高



WEIQI JIETI LIANXI
TIGAO

吕睿超 主编

河南科学技术出版社



围棋阶梯练习·提高

吕睿超 主编

河南科学技术出版社
· 郑州 ·

编委会名单

主 编：吕睿超

副主编：冯 伟 王云涛 王 坤

编 委：马 望 方 栋 时 毅

赵 琪 赵 炎

图书在版编目(CIP)数据

围棋阶梯练习.提高/吕睿超主编.—郑州：河南科学技术出版社，
2014.1

ISBN 978-7-5349-6623-1

I.①围… II.①吕… ②王… III.①围棋—基本知识 IV.①G891.3

中国版本图书馆CIP数据核字（2013）第244854号

出版发行：河南科学技术出版社

地址：郑州市经五路66号 邮编：450002

电话：(0371) 65737028

网址：www.hnstp.cn

策划编辑：董 涛

责任编辑：董 涛

责任校对：柯 姣

封面设计：张 伟

责任印制：张艳芳

印 刷：河南省瑞光印务股份有限公司

经 销：全国新华书店

幅面尺寸：170 mm × 240 mm 印张：14.25 字数：180千字

版 次：2014年1月第1版 2014年1月第1次印刷

定 价：20.00元

如发现印、装质量问题，影响阅读，请与出版社联系。

目录

第1部分 基本死活常型	5
第2部分 实战死活运用	41
答案	77

围棋阶梯练习·提高

吕睿超 主编

河南科学技术出版社
· 郑州 ·

编委会名单

主 编：吕睿超

副主编：冯 伟 王云涛 王 坤

编 委：马 望 方 栋 时 毅

赵 琪 赵 炎

图书在版编目(CIP)数据

围棋阶梯练习.提高/吕睿超主编.—郑州：河南科学技术出版社，
2014.1

ISBN 978-7-5349-6623-1

I.①围… II.①吕… ②王… III.①围棋—基本知识 IV.①G891.3

中国版本图书馆CIP数据核字（2013）第244854号

出版发行：河南科学技术出版社

地址：郑州市经五路66号 邮编：450002

电话：(0371) 65737028

网址：www.hnstp.cn

策划编辑：董 涛

责任编辑：董 涛

责任校对：柯 姣

封面设计：张 伟

责任印制：张艳芳

印 刷：河南省瑞光印务股份有限公司

经 销：全国新华书店

幅面尺寸：170 mm × 240 mm 印张：14.25 字数：180千字

版 次：2014年1月第1版 2014年1月第1次印刷

定 价：20.00元

如发现印、装质量问题，影响阅读，请与出版社联系。

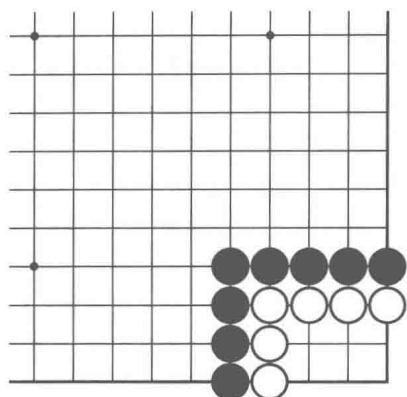
目录

第1部分 基本死活常型	5
第2部分 实战死活运用	41
答案	77

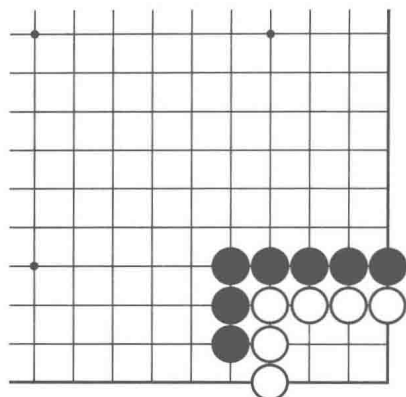
第一部分

基本死活常型

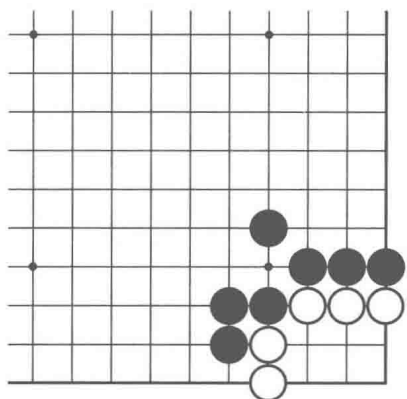




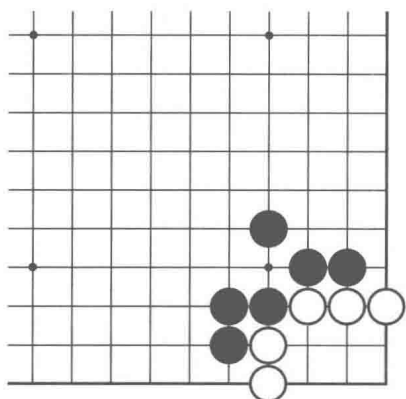
题1-1



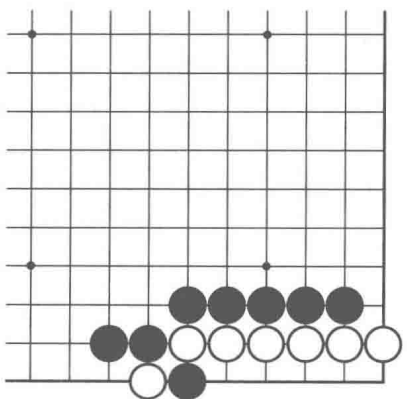
题1-2



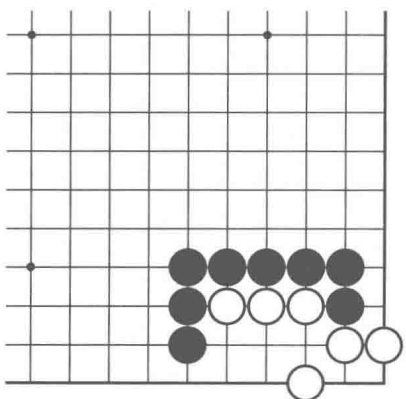
题1-3



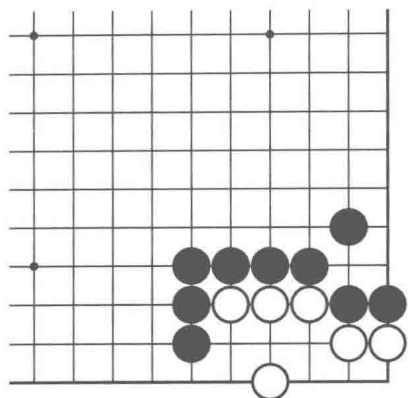
题1-4



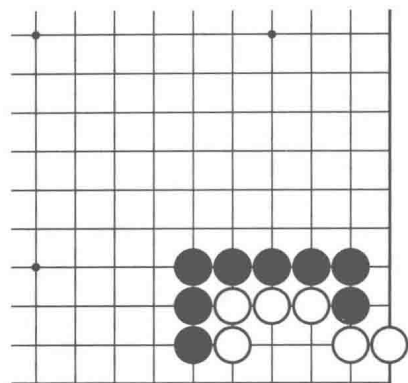
题1-5



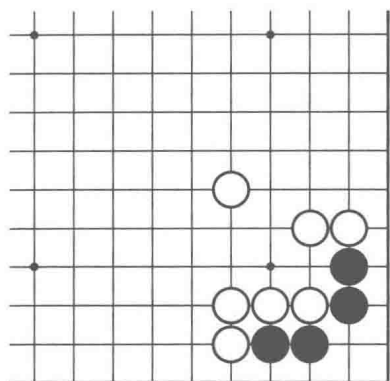
题1-6



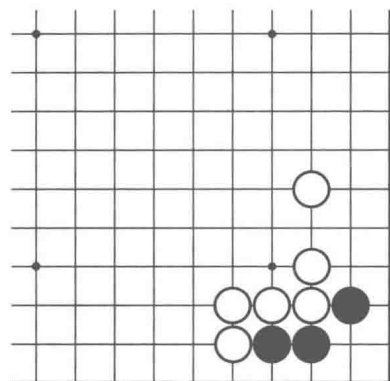
题1-7



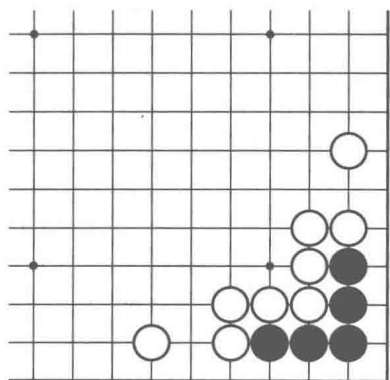
题1-8



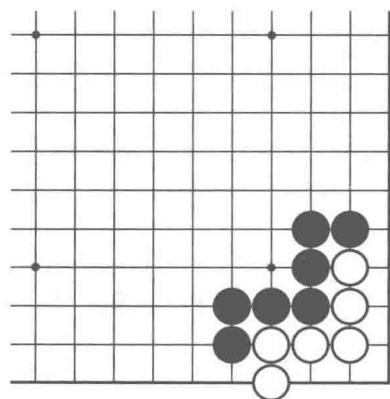
题1-9



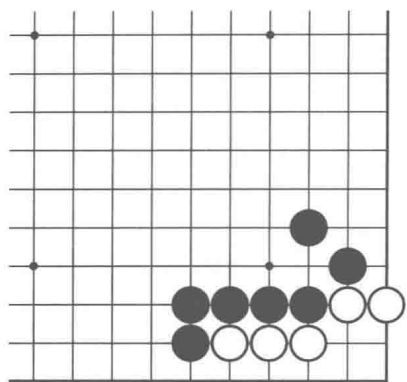
题1-10



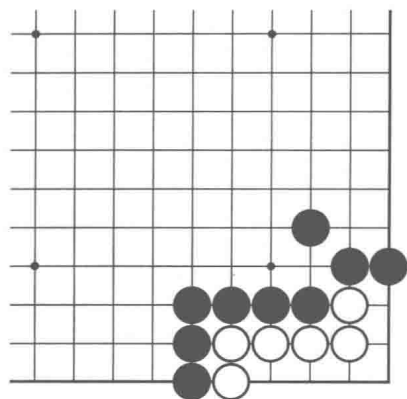
题1-11



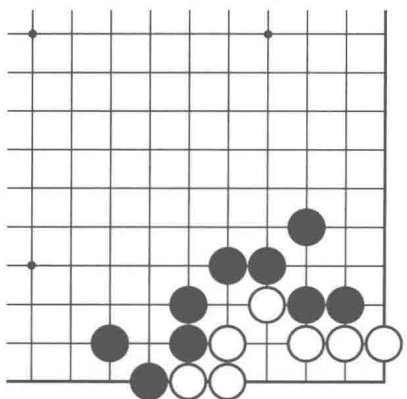
题1-12



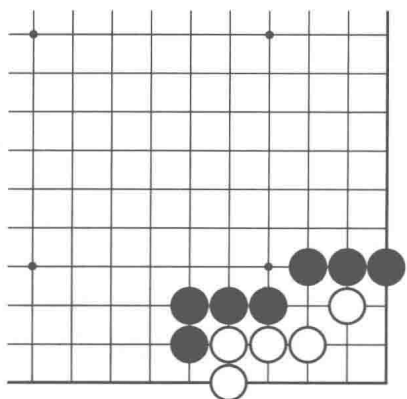
题1-13



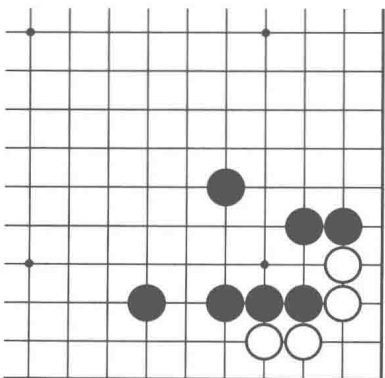
题1-14



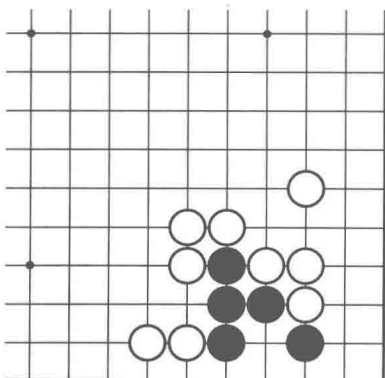
题1-15



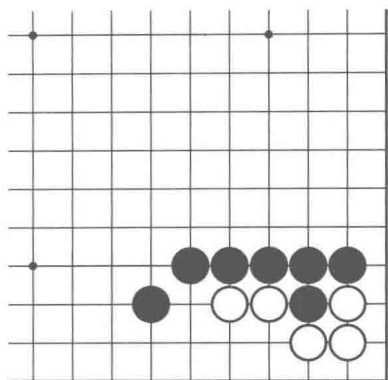
题1-16



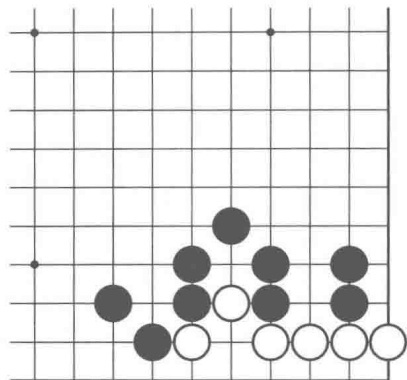
题1-17



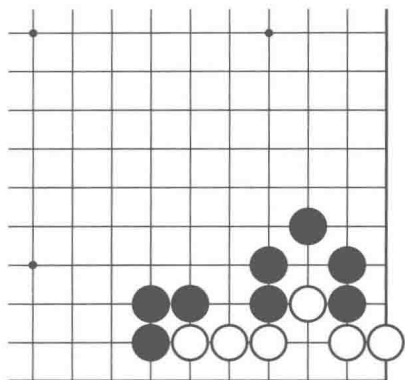
题1-18



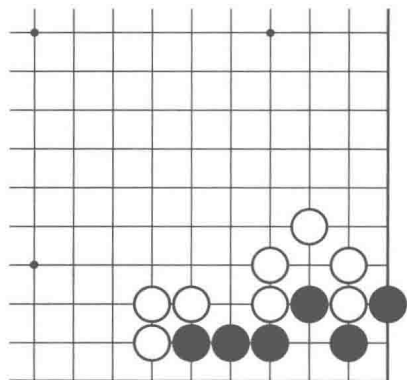
题1-19



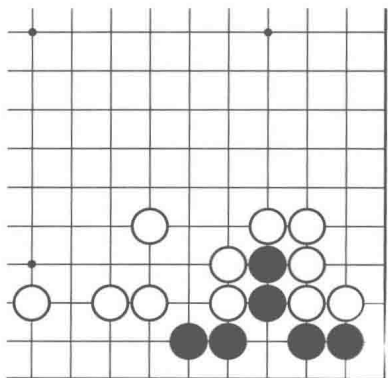
题1-20



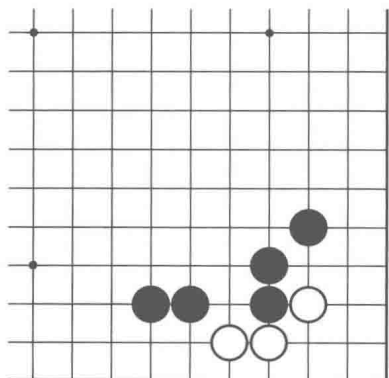
题1-21



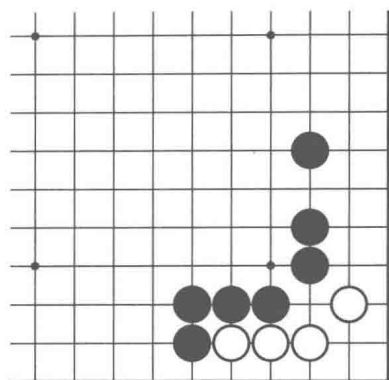
题1-22



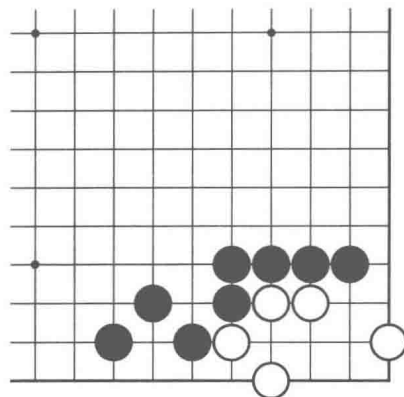
题1-23



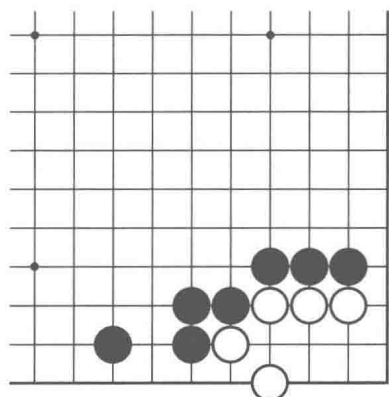
题1-24



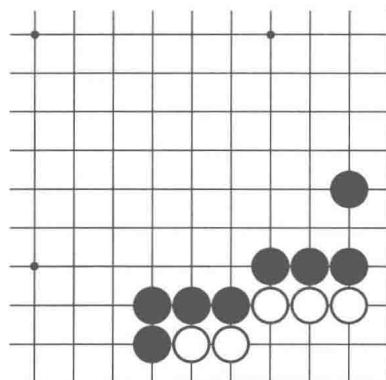
题1-25



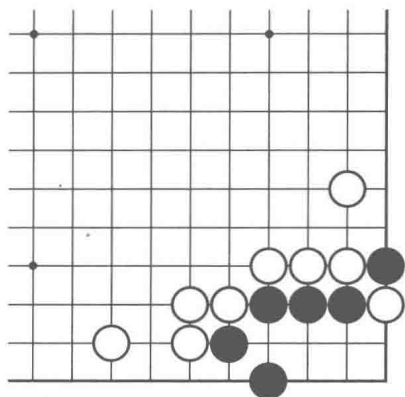
题1-26



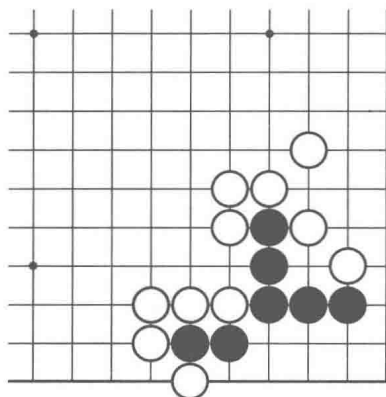
题1-27



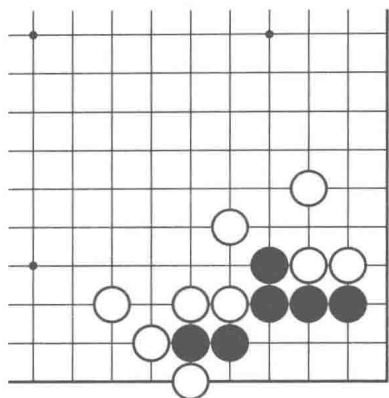
题1-28



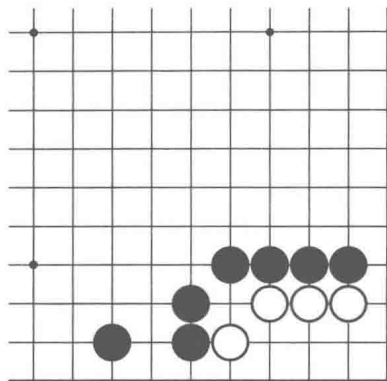
题1-29



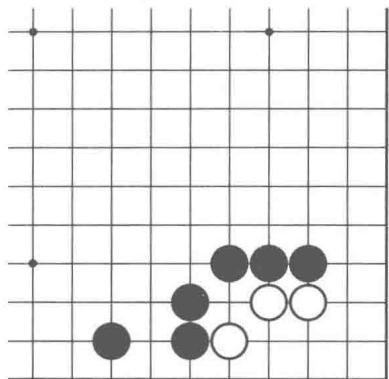
题1-30



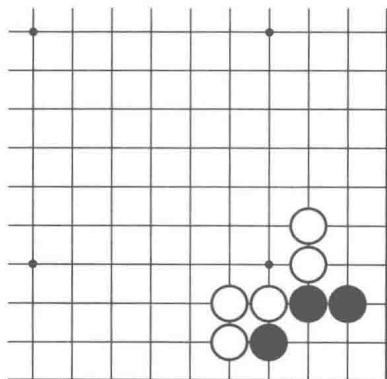
题1-31



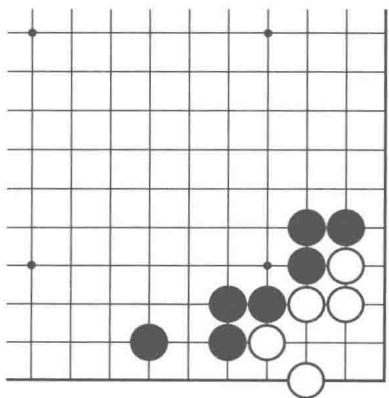
题1-32



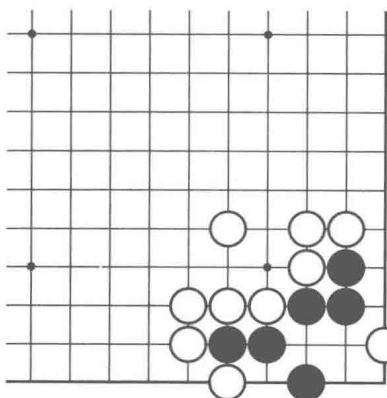
题1-33



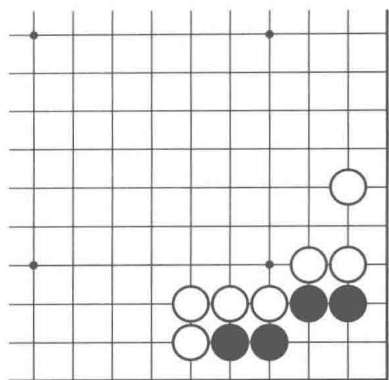
题1-34



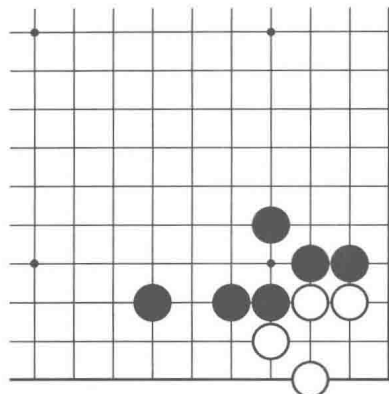
题1-35



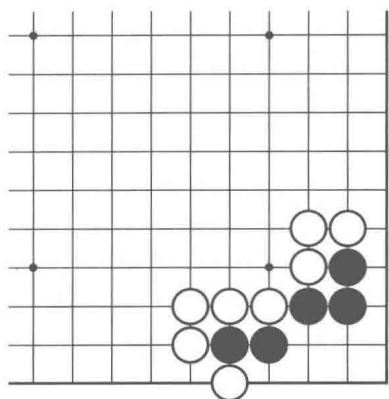
题1-36



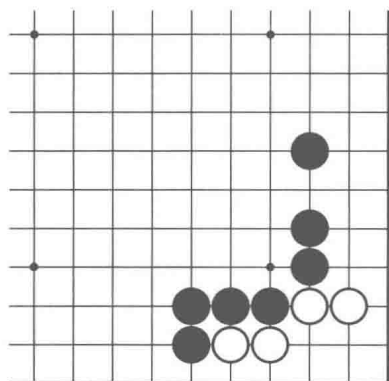
题1-37



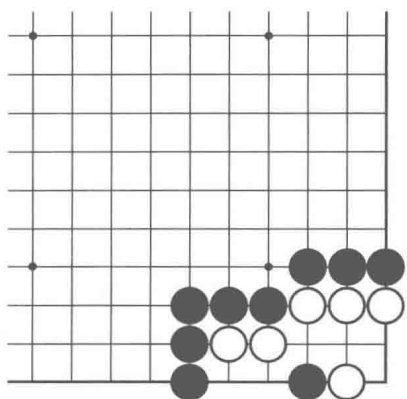
题1-38



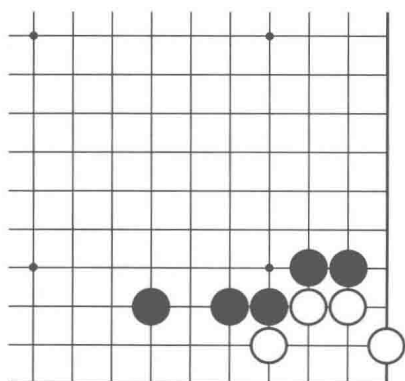
题1-39



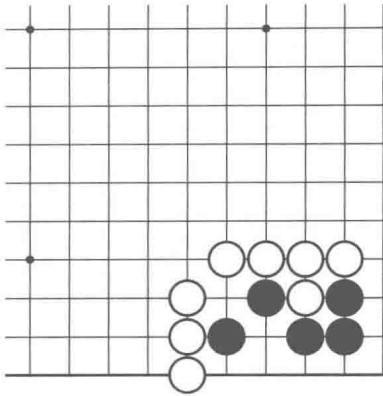
题1-40



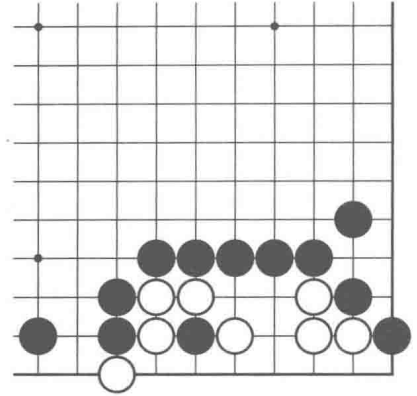
题1-41



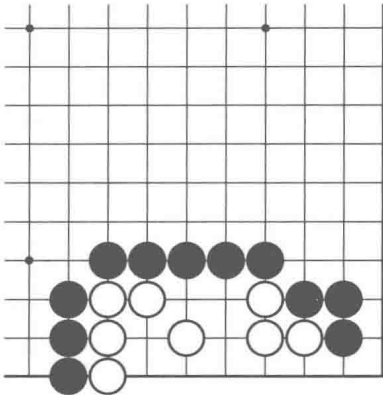
题1-42



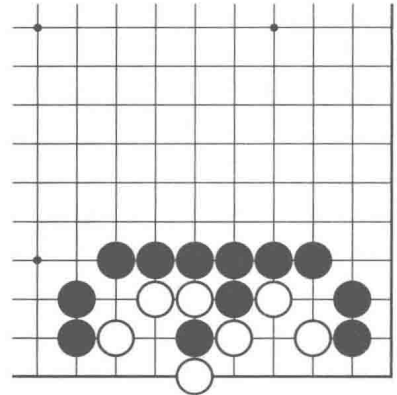
题1-43



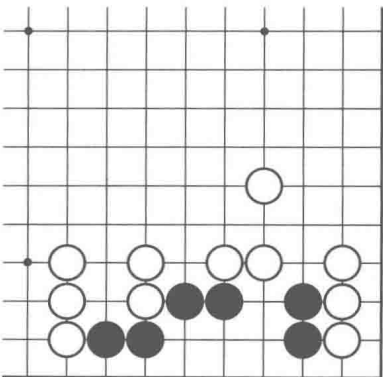
题1-44



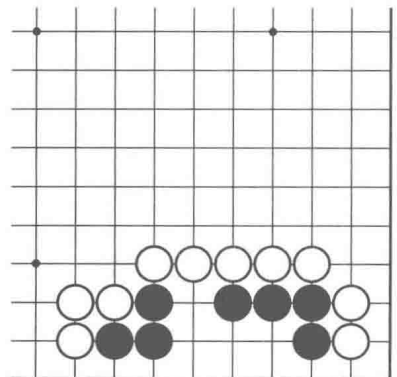
题1-45



题1-46



题1-47



题1-48