

Wiley CMAexcel LEARNING SYSTEM EXAM REVIEW

第一部分

PART1

Financial reporting, planning,
performance, and control

Wiley 美国注册管理会计师 (CMA) 认证考试辅导教材

财务报告、规划、绩效与控制

英汉双语 — 第四版

上册

美国管理会计师协会 (IMA) 主编

舒新国 赵澄 译



The Association of
Accountants and
Financial Professionals
in Business



经济科学出版社
Economic Science Press

WILEY

Wiley CMAexcel LEARNING SYSTEM EXAM REVIEW

第一部分

PART 1

Financial reporting, planning,
performance, and control

Wiley 美国注册管理会计师 (CMA) 认证考试辅导教材

财务报告、规划、绩效与控制

英汉双语 — 第四版

上册

美国管理会计师协会 (IMA) 主编

舒新国 赵澄 译

ima®

The Association of
Accountants and
Financial Professionals
in Business



经济科学出版社
Economic Science Press

WILEY

图书在版编目 (CIP) 数据

财务报告、规划、绩效与控制: 第4版: 英汉对照/美国管理会计师协会主编;
舒新国, 赵澄译. —北京: 经济科学出版社, 2015. 2

Wiley 美国注册管理会计师 (CMA) 认证考试辅导教材

ISBN 978 - 7 - 5141 - 5414 - 6

I. ①财… II. ①美…②舒…③赵… III. ①企业管理 - 财务管理 -
注册会计师 - 资格考试 - 教材 - 英、汉 IV. ①F275

中国版本图书馆 CIP 数据核字 (2015) 第 008720 号

图字: 01 - 2014 - 7175

Wiley CMAexcel Learning System Exam Review 2015 Self - Study Guide
Part I: Financial Reporting, Planning, Performance, and Control

Copyright © 2014 by Institute of Management Accountants. All rights reserved.

AUTHORIZED TRANSLATION OF THE EDITION PUBLISHED BY JOHN WILEY & SONS, New York,
Chichester, Brisbane, Singapore AND Toronto. No part of this book may be reproduced
in any form without the written permission of John Wiley & Sons Inc.

中英文双语版专有出版权属经济科学出版社
版权所有, 翻印必究

责任编辑: 周国强
责任校对: 徐领弟
责任印制: 邱 天

财务报告、规划、绩效与控制 (英汉双语—第四版) (上、下册)

美国管理会计师协会 (IMA) 主编

舒新国 赵 澄 译

经济科学出版社出版、发行 新华书店经销

社址: 北京市海淀区阜成路甲 28 号 邮编: 100142

总编辑部电话: 010 - 88191217 发行部电话: 010 - 88191522

网址: [www. esp. com. cn](http://www.esp.com.cn)

电子邮件: [esp@ esp. com. cn](mailto:esp@esp.com.cn)

天猫网店: 经济科学出版社旗舰店

网址: [http: //jjkxcbs. tmall. com](http://jjkxcbs.tmall.com)

北京万友印刷有限公司印装

880 × 1230 16 开 108.25 印张 2800000 字

2015 年 3 月第 1 版 2015 年 3 月第 1 次印刷

ISBN 978 - 7 - 5141 - 5414 - 6 定价: 350.00 元

(图书出现印装问题, 本社负责调换。电话: 010 - 88191502)

(版权所有 侵权必究 举报电话: 010 - 88191586)

电子邮箱: [dbts@ esp. com. cn](mailto:dbts@esp.com.cn))

版权所有© 2014 美国管理会计师协会

本书所有内容均受版权保护，不得以任何形式或任何方式复制、使用本书的内容制作任何演绎作品。未经美国管理会计师协会的书面授权，任何复制、翻印或发行本教材的行为都属非法行为，并严重地违背了《IMA 职业道德行为准则》。

任何 CMA 或 CMA 考生，若未事先获得 IMA 授权，以任何形式复制、翻印或发行本教材或教材内容均会面临法律诉讼，同时还会将这一行为报告给 IMA（美国注册管理会计师协会），并立即取消其 IMA 会员资格和 CMA 考试资格。

读者有责任确保自己所使用的 CMA 考试资料来自有授权的渠道或个人。如果对资料的可信性或资料提供途径有任何怀疑，请联系 IMA 客户服务处，致电（800）638—4427 或 +1（201）573—9000。

本教材旨在帮助考生学习、备考，读者应认识到出版商和教材作者并没有义务提供法律或专业方面的服务。

Wiley 出版公司声明

根据美国 1976 年版权法案第 107 节和 108 节规定，未经出版商预先书面许可，不得以任何方式（包括电子版本、手工抄写、复印、录音、扫描等）翻印、在检索系统中储存，或传播本书的任何内容。如需获得授权，请通过当局按照每册适当的价格向版权结算中心（Copyright Clearance Center, Inc）支付一定的版权费用，地址：美国马萨诸塞州丹佛市紫檀大道 222 号，邮编：MA 01923，电话：（978）750—8400，传真：（978）646—8600，或登录网址：www.copyright.com。如果向出版商提交授权申请，地址请寄：美国新泽西州霍博肯市沿河大街 111 号 John Wiley & Sons 出版公司授权中心，邮编：NJ07030，电话：（201）748—6011，传真：（201）748—6008，或在线登录：www.wiley.com/go/permissions。

责任声明：尽管出版商和教材作者在出版和编写准备中尽量做到最好，但是，他们对本书内容的准确性和完整性，特别是对本书的商业适销性和用于某一特定目的的合适性，不作任何保证。销售代理商不得做出口头承诺或以书面材料的保证。教材中包含的建议和学习策略可能并不适合每一个人。你可以向专业人士咨询适合自己的学习策略。出版商和作者不对任何经营亏损或其他任何的（包括但不限于特殊的、偶然的、间接的或其他）商业损失承担责任。

欲获得我们其他产品、服务，或技术支持的一般信息，请联系我们的客户服务部门，美国国内联系电话：（800）762—2974，国外联系电话：（317）572—3993，或传真：（317）572—4002。

Wiley 出版公司还同步发行各种图书的电子版本。有些在纸质版本上有的内容，电子版本的图书上可能没有。如果想获得关于 Wiley 公司的更多产品信息，请登录我们的网址：www.wiley.com。

注意：本书的在线功能只提供中文版在线题库，请参照书后所附卡片。

关于美国管理会计师协会（IMA®）

美国管理会计师协会，是会计师和财务人员的行业协会，也是致力于推进管理会计职业发展的最大、最受推崇的协会之一。通过开展研究、提供美国注册管理会计师（CMA）认证考试、提供专业继续教育、构建人际网络，以及提倡至高的道德和职业标准，IMA 在全球范围内推进行业的发展。IMA 在全球 120 个国家和 300 个当地分会拥有超过 65 000 名会员。IMA 还通过它设在各地的办事处向当地提供服务，包括美国新泽西州的蒙特威尔办事处、瑞士的苏黎世办事处、阿联酋的迪拜办事处，以及中国的北京办事处。如欲获得更多关于 IMA 的信息，请访问：www.imanet.org

Acknowledgments of Subject Matter Experts

The Wiley CMAexcel Learning System (WCMALS) content is written to help explain the concepts and calculations from the Certified Management Accountant (CMA) exam Learning Outcome Statements (LOS) published by the Institute of Certified Management Accountants (ICMA).

IMA would like to acknowledge the team of subject matter experts who worked together in conjunction with IMA staff to produce this version of the WCMALS.

Lynn Clements, DBA, CMA, CFM, CPA, Cr. FA, CFE, is a professor of accounting at Florida Southern College in Lakeland, Florida. She earned her Ph.D. in business administration with an accounting concentration from Nova Southeastern University. Clements has been a member of the Institute of Management Accountants since 1990. She has published many research articles and regularly teaches continuing professional education courses to the accounting community.

Saurav Dutta, CMA, is an associate professor and former chair of the Accounting Department at the State University of New York at Albany. Dutta is the author of some 20 research articles published in various academic journals. He received his Ph.D. in accounting from the University of Kansas and is also the recipient of the Robert Beyer Silver Medal for securing the second highest total score in a CMA examination.

Tony Griffin, CMA, is the accounting manager for Dayton Aerospace, Inc., a senior management consulting firm specializing in defense acquisition and logistics support to government and industry customers. Griffin has been actively involved in supporting the IMA and the CMA certification by serving as president of his local IMA chapter and by organizing and leading CMA review courses in the Dayton, Ohio, area.

Karen L. Jett, CMA, is a consultant specializing in values-based organizational development and ethics training. Prior to starting her own business (Jett Excellence),

she acquired over two decades of experience working in privately held companies and holds a degree in accounting from Temple University (Philadelphia, PA). Jett is author of *Grow Your People, Grow Your Business* (Mira Digital, 2008) and *Questioning Ethics*, an innovative ethics training system designed specifically for smaller businesses. She has taught the CMA Review Courses for many years, both as an adjunct professor at Villanova University (Villanova, PA) and directly to corporate clients.

Jan Kooiman, CMA, holds a doctorate in business economics from the University of Amsterdam. He worked for an accounting and audit firm before stepping into the professional world as chief financial officer and board member of an international company. Kooiman is a qualified transactional Six Sigma Black Belt and Trainer and is adjunct professor of finance, business, and accounting at the Webster and Leiden University in the Netherlands, teaching MBA Finance and Management Accounting. He is also the program manager and instructor of the CMA program at the World Trade Center Amsterdam.

Lou Petro, CMA, CPA, CGMA, CIA, CCP, CISA, CFE, CFM, PE, is a senior manager with a major fraud investigation firm and a former consultant and auditor. Petro specializes in fraud deterrence and investigation, corporate governance, bankruptcy, information systems auditing, production and inventory controls, internal controls, and cost and managerial accounting. He has also taught auditing, systems, accounting, and finance courses at colleges and universities in Michigan and Ontario.

Tara Shawver, DBA, CMA, is an associate professor of accounting at King's College (Wilkes-Barre, PA). She earned her Ph.D. in business administration with an accounting concentration from Nova Southeastern University. Shawver has been an active member of the Institute of Management Accountants since 2003. She is an active volunteer with the IMA, serving as president of the Pennsylvania Northeast Chapter. She has published many research articles and frequently presents at IMA's Annual Conference and Exhibition and the American Accounting Association.

Siaw-Peng Wan, CFA, is a professor of finance and the MBA program director at Elmhurst College (Elmhurst, IL). He received his Ph.D. in economics from the University of Illinois at Urbana-Champaign, and he recently became a CFA charter holder. His most recent articles on online investing and banking have appeared in *The Internet Encyclopedia* and *The Handbook of Information Security*. Wan has taught CMA Review Courses at Northern Illinois University since 2004.

Candidate Study Information

CMA Certification from ICMA

The Certified Management Accountant (CMA) certification provides accountants and financial professionals with an objective measure of knowledge and competence in the field of management accounting. The CMA designation is recognized globally as an invaluable credential for professional accountancy advancement inside organizations and for broadening professional skills and perspectives.

The two-part CMA exam is designed to develop and measure critical thinking and decision-making skills and to meet these objectives:

- To establish management accounting and financial management as recognized professions by identifying the role of the professional, the underlying body of knowledge, and a course of study by which such knowledge is acquired.
- To encourage higher educational standards in the management accounting and financial management fields.
- To establish an objective measure of an individual's knowledge and competence in the fields of management accounting and financial management.
- To encourage continued professional development.

Individuals earning the CMA designation benefit by being able to:

- Communicate their broad business competency and strategic financial mastery.
- Obtain contemporary professional knowledge and develop skills and abilities that are valued by successful businesses.
- Convey their commitment to an exemplary standard of excellence that is grounded on a strong ethical foundation and lifelong learning.
- Enhance their career development, salary qualifications, and professional promotion opportunities.

The CMA certification is granted exclusively by the Institute of Certified Management Accountants (ICMA).

CMA Learning Outcome Statements (LOS)

The Certified Management Accountant exam is based on a series of Learning Outcome Statements (LOS) developed by the Institute of Certified Management Accountants (ICMA). The LOS describes the knowledge and skills that make up the CMA body of knowledge, broken down by part, section, and topic. The Wiley CMAexcel Learning System (WCMALS) supports the LOS by addressing the subjects they cover. Candidates should use the LOS to ensure they can address the concepts in different ways or through a variety of question scenarios. Candidates should also be prepared to perform calculations referred to in the LOS in total or by providing missing components of a calculation. The LOS should not be used as proxies for exact exam questions; they should be used as a guide for studying and learning the content that will be covered on the exam.

A copy of the ICMA Learning Outcome Statements is included in Appendix A at the end of this book. Candidates are also encouraged to visit the IMA Web site to find other exam-related information at www.imanet.org.

CMA Exam Format

The content tested on the CMA exams is at an advanced level—which means that the passing standard is set for mastery, not minimum competence. Thus, there will be test questions for all major topics that require the candidate to synthesize information, evaluate a situation, and make recommendations. Other questions will test subject comprehension and analysis. However, compared to previous versions, this CMA exam will have an increased emphasis on the higher-level questions.

The content is based on a series of LOS that define the competencies and capabilities expected of a management accountant.

There are two exams, taken separately: Part 1: Financial Reporting, Planning, Performance, and Control; and Part 2: Financial Decision Making. Each exam is four hours in length and includes multiple-choice and essay questions. One hundred multiple-choice questions are presented first, followed by two essay questions. All of these questions—multiple-choice and essay—can address any of the LOS for the respective exam part. Therefore, your study plan should include learning the content of the part as well as practicing how to answer multiple-choice and essay questions against that content. The study plan tips and the final section of this WCMALS book contain important information to help you learn how to approach the different types of questions.

Note on Candidate Assumed Knowledge

The CMA exam content is based on a set of assumed baseline knowledge that candidates are expected to have. Assumed knowledge includes economics, basic statistics,

and financial accounting. Examples of how this assumed knowledge might be tested in the exam include:

- How to calculate marginal revenue and costs as well as understand the relevance of market structures when determining prices
- How to calculate variance when managing financial risk
- How to construct a cash flow statement as part of an analysis of transactions and assess the impact of the transactions on the financial statements

Please note that prior courses in accounting and finance are highly recommended to ensure this knowledge competency when preparing for the exam.

Overall Expectations for the CMA Candidates

Completing the CMA exams requires a high level of commitment and dedication of up to 150 hours of study for each part of the CMA exam. Completing the two-part exam is a serious investment that will reap many rewards, helping you to build a solid foundation for your career, distinguish yourself from other accountants, and enhance your career in ways that will pay dividends for a lifetime.

Your success in completing these exams will rest heavily on your ability to create a solid study plan and to execute that plan. IMA offers many resources, tools, and programs to support you during this process—the exam content specifications, assessment tools to identify the content areas you need to study most, comprehensive study tools such as the Online Test Bank, classroom programs, and online intensive review courses. We encourage you to register as a CMA candidate as soon as you begin the program to maximize your access to these resources and tools and to draw on these benefits with rigor and discipline that best supports your unique study needs. We also suggest candidates seek other sources if further knowledge is needed to augment knowledge and understanding of the ICMA LOS.

For more information about the CMA certification, the CMA exams, or the exam preparation resources offered through IMA, visit www.imanet.org.

Updates and Errata Notification

Please be advised that our materials are designed to provide thorough and accurate content with a high level of attention to quality. From time to time there may be clarifications, corrections, or updates that are captured in an Updates and Errata Notification.

To ensure you are kept abreast of changes, this notification will be available on Wiley's CMA update and errata page. You may review these documents by going to www.wiley.com/go/cmaerrata2015.

How to Use the Wiley CMAexcel Learning System

This product is based on the CMA body of knowledge developed by the Institute of Certified Management Accountants (ICMA). This material is designed for learning purposes and is distributed with the understanding that the publisher and authors are not offering legal or professional services. Although the text is based on the body of knowledge tested by the CMA exam and the published Learning Outcome Statements (LOS) covering the two-part exams, the Wiley CMAexcel Learning System (WCMALS) program developers do not have access to the current bank of exam questions. It is critical that candidates understand all LOS published by the ICMA, learn all concepts and calculations related to those statements, and have a solid grasp of how to approach the multiple-choice and essay exams in the CMA program.

Some exam preparation tools provide an overview of key topics; others are intended to help you practice one specific aspect of the exams such as the questions. The WCMALS is designed as a comprehensive exam preparation tool to help you study the content from the exam LOS, learn how to write the CMA exams, and practice answering exam-type questions.

Study the Book Content

The **table of contents** is set up using the CMA exam content specifications established by ICMA. Each section, topic, and subtopic is named according to the content specifications and the **Learning Outcome Statements (LOS)** written to correspond to these specifications. As you go through each section and major topic, refer to the related LOS found in Appendix A. Then review the WCMALS book content to help learn the concepts and formulas covered in the LOS.

The **Learning Outcome Statements Overviews** provide a quick reference to the LOS as well as key points to remember within them. These sections should not replace the in-depth discussion of the material that is in this book. However, these overviews do serve as a refresher on what has been learned and can be used as a tool to reinforce the knowledge that you have obtained.

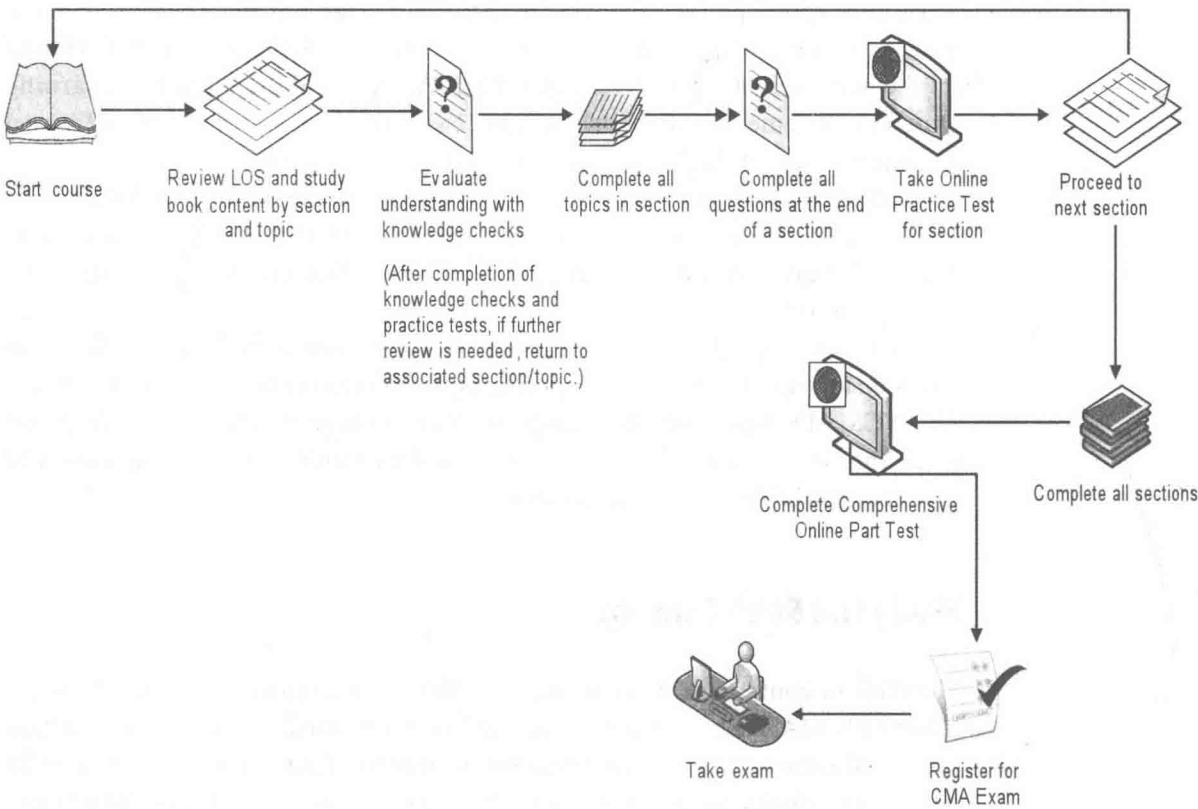
The **knowledge checks** are designed to be quick checks to verify that you understand and remember the content just covered by presenting questions and correct

answers. The answers refer to the appropriate sections in the book for you to review the content and find the answer yourself.

The **practice questions** are a sampling of the type of exam questions you will encounter on the exam and are considered complex and may involve extensive written and/or calculation responses. Use these questions to begin applying what you have learned, recognizing there is a much larger sample of practice questions available in the Online Test Bank (described in the next section).

The WCMALS also contains a **bibliography and references** in case you need to find more detailed content on an LOS. We encourage you to use published academic sources. While information can be found online, we discourage the use of open-source, unedited sites such as Wikipedia.

Suggested Study Process Using the WCMALS



WCMALS Book Features

The WCMALS books use a number of features to draw your attention to certain types of content:

Key terms are **bolded** where they appear in the text with their definition, to allow you to quickly scan through and study them.



Key formulas are indicated with this icon. Be sure you understand these formulas and practice applying them.



Knowledge checks at the end of each topic are review questions that let you check your understanding of the content just read. (They are not representative of the type of questions that appear on the exam.)



Study tips offer ideas and strategies for studying and preparing for the exam.



Practice questions are examples of actual exam questions. Presented at the end of each section, these questions help you solidify your learning of that section and apply it to the type of questions that appear on the exam.

Online Test Bank

Included with your purchase of the Wiley CMAexcel Learning System Part 1 book is an Online Test Bank made available to you through www.wileycma.com. This test bank includes **five section-specific tests** that randomize questions from a selected section only. The course also includes a **comprehensive Part 1 test** that emulates the percentage weighting of each section on the actual Part 1 exam. All questions are drawn from a bank of more than 800 questions, so that each time you repeat the test, you will receive a different set of questions covering all the topics in the section. All the multiple-choice questions provide feedback in response to your answers.

It is suggested that you integrate the Online Test Bank throughout your study program instead of leaving them until the end. The section-specific tests are designed for you to practice questions related to the section content—read and learn a section and then practice the online questions related to the section. This also will help you identify whether further study of the section content is required before moving to the next section.

The comprehensive Part 1 test is designed to help you simulate taking the actual CMA exam. Try the comprehensive Part 1 test after you have studied all the Part 1 content. You can take this exam multiple times. Each time you will receive a different combination of questions. It is recommended that you set up your own exam simulation—set aside four hours in a room without interruption, do not have any reference books open, and work through the comprehensive part exam as if you were taking the real exam. This will prepare you for the exam setting and give you a good idea of how ready you are.

In addition, sample essay questions are provided that simulate the testing environment. The correct answer is provided which will enable you to self-score your answer.

You are strongly encouraged to make full use of all online practice and review features as part of your study efforts. Please note that these features are subscription based and available only for a specific number of months from the time of registration.

Learn to Write the CMA Exam

The four-hour CMA exam will test your understanding of each part's content using both multiple-choice and essay questions. This means you must learn to write two types of tests in one sitting. The WCMALS books contain tips, instruction, and examples to help you learn to write an essay exam. Be sure to study the Essay Exam Support Materials section so that in addition to practicing with the Online Test Bank, you also learn to respond to the part content in essay format.

Create a Study Plan

Each part of the two-part CMA exam uses a combination of a multiple-choice format and an essay format to test your understanding of the part concepts, terms, and calculations. Creating a study plan is an essential ingredient to planning a path to success. Managing your plan is critical to achieving success. The next tips and tactics are included to help you prepare and manage your study plan.

Study Tips

There are many ways to study, and the plan you create will depend on things such as your lifestyle (when and how you can schedule study time), your learning style, how familiar you are with the content, and how practiced you are at writing a formal exam. Only you can assess these factors and create a plan that will work for you. Some suggestions that other exam candidates have found helpful follow.

- Schedule regular study times and stay on schedule.
- Avoid cramming by breaking your study times into small segments. For example, you may want to work intensely for 45 minutes with no interruptions, followed by a 15-minute break during which time you do something different. You may want to leave the room, have a conversation, or exercise.
- When reading, highlight key ideas, especially unfamiliar ones. Reread later to ensure comprehension.
- Pay particular attention to the terms and equations highlighted in this book, and be sure to learn the acronyms in the CMA body of knowledge.
- Create personal mnemonics to help you memorize key information. For example, CCIC to remember the four ethical standards: Competence, Confidentiality, Integrity, and Credibility.
- Create study aids such as flash cards.
- Use index cards, and write a question on one side and the answer on the other. This helps reinforce the learning because you are writing the information as well as reading it. Examples: What is ____? List the five parts of ____.
- In particular, make flash cards of topics and issues that are unfamiliar to you, key terms and formulas, and anything you highlighted while reading.
- Keep some cards with you at all times to review when you have time, such as in an elevator, while waiting for an appointment, and so on.

- Use a flash card partner. This person does not need to understand accounting. He or she only needs the patience to sit with you and read the questions off the flash card.
- As test time approaches, start to eliminate the questions you can easily answer from your stack so you can concentrate on the more challenging topics and terms.
- If particular topics are difficult, tap into other resources, such as the Internet, library, accountant colleagues, or professors, to augment your understanding.
- Use your study plan—treat it as a living document and update it as you learn more about what you need to do to prepare for the exam.
- Use the knowledge checks in the book to assess how well you understand the content you just completed.
- Use the Online Test Bank to test your ability to answer multiple-choice practice questions on each section's content as you finish it. After completing the first 40 questions presented, review areas in the book that you were weak on in the practice test. Then try the section test again.
- Be sure to learn how to take a multiple-choice question exam—there are many online resources with tips and guidance that relate to answering multiple-choice exams.
 - Make an attempt to answer all questions. There is no penalty for an incorrect answer—if you don't try, even when you are uncertain, you eliminate the potential of getting a correct answer.
 - Create your own “simulated” multiple-choice trial exam using the full Part 1 Online Practice Test.
- Learn to write an effective essay answer.
 - Use the Essay Exam Support Materials section of this book. This content shows a sample grading guide and includes a sample of a good, a better, and a best answer in addition to some helpful tips for writing an essay answer.
 - Learn how points are awarded for an essay answer so that you can ensure you get the most points possible for your answers, even when you are very challenged by a question.
 - Practice essay responses using the questions in this WCMALS book as well as the Online Test Bank.
- Be sure to access the Online Test Bank and its Essay Questions until you are comfortable with the content.

Ensure you are both well rested and physically prepared for the exam day as each exam is four hours in length with no break for meals. Learning how to answer a multiple-choice and essay exam and being mentally and physically prepared can improve your grade significantly. Know the content and be prepared to deal with challenges with a focused, confident, and flexible attitude.