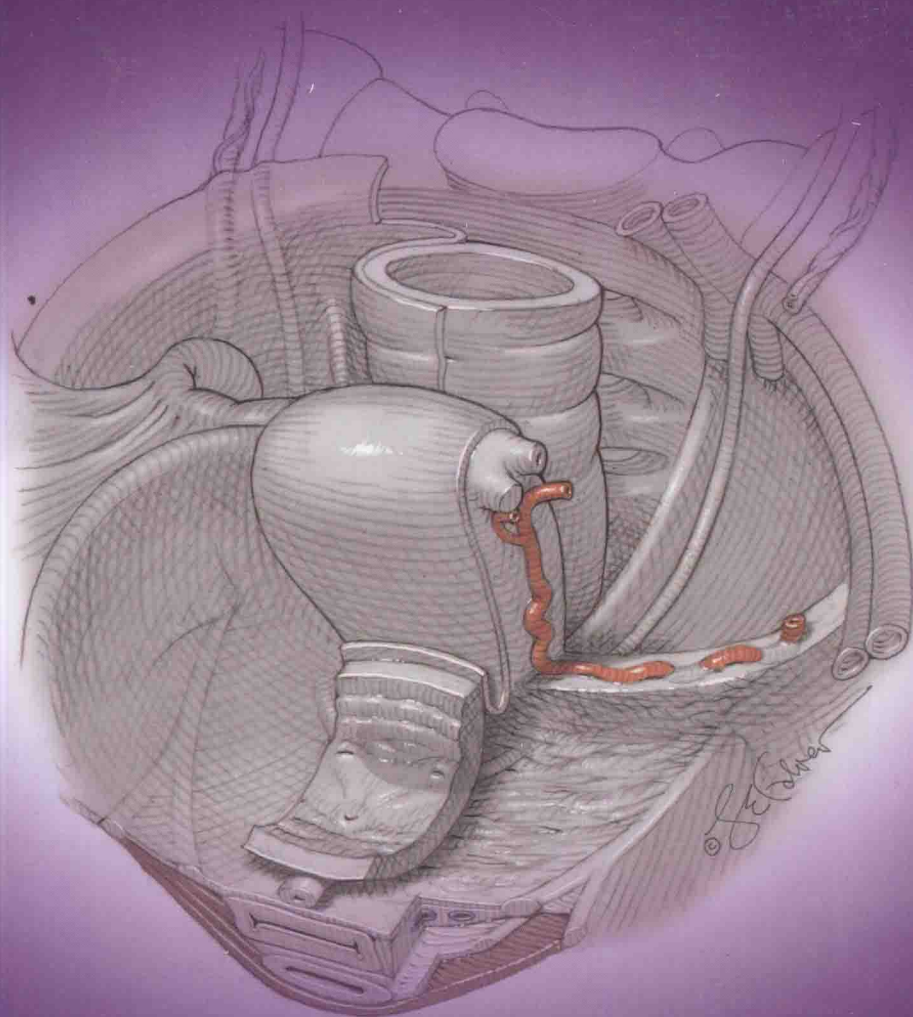


第2版

威廉姆斯妇科学

Williams GYNECOLOGY

英文影印版



HOFFMAN
SCHORGE
SCHAFER
HALVORSON
BRADSHAW
CUNNINGHAM

Mc
Graw
Hill
Education



北京大学医学出版社

威廉姆斯妇科学

Williams **GYNECOLOGY**

(第 2 版)

Barbara L. Hoffman, MD
John O. Schorge, MD
Joseph I. Schaffer, MD
Lisa M. Halvorson, MD
Karen D. Bradshaw, MD
F. Gary Cunningham, MD

Department of Obstetrics and Gynecology
University of Texas Southwestern Medical Center at Dallas

Parkland Health and Hospital System
Dallas, Texas

Lewis E. Calver, MS, CMI, FAMI

Biomedical Communications Graduate Program
University of Texas Southwestern Medical Center at Dallas



北京大学医学出版社

图书在版编目 (CIP) 数据

威廉姆斯妇科学 : 原著第2版 = Williams Gynecology,
second edition : 英文 / (美) 霍夫曼 (Hoffman, B. L.) ,
(美) 肖尔格 (Schorge, J. O.) , (美) 莎孚 (Schaffer, J. I.)
编. — 北京 : 北京大学医学出版社, 2015. 1
ISBN 978-7-5659-0926-9

I. ①威… II. ①霍… ②肖… ③莎… III. ①妇科学—
英文 IV. ①R711

中国版本图书馆CIP数据核字 (2014) 第197684号

Barbara L. Hoffman, John O. Schorge, Joseph I. Schaffer, Lisa M. Halvorson,
Karen D. Bradshaw, F. Gary Cunningham
Williams Gynecology, second edition
ISBN 978-0-07-171672-7
Copyright © 2012 by McGraw-Hill Education.

All Rights reserved. No part of this publication may be reproduced or transmitted in any form or by any means, electronic or mechanical, including without limitation photocopying, recording, taping, or any database, information or retrieval system, without the prior written permission of the publisher.
This authorized English reprint edition is jointly published by McGraw-Hill Education and Peking University Medical Press. This edition is authorized for sale in the People's Republic of China only, excluding Hong Kong, Macao SAR and Taiwan.
Copyright ©2015 by McGraw-Hill Education and Peking University Medical Press.

版权所有。未经出版人事先书面许可, 对本出版物的任何部分不得以任何方式或途径复制或传播, 包括但不限于复印、录制、录音, 或通过任何数据库、信息或可检索的系统。

本授权英文影印版由麦格劳-希尔 (亚洲) 教育出版公司和北京大学医学出版社合作出版。此版本经授权仅限在中华人民共和国境内 (不包括香港特别行政区、澳门特别行政区和台湾) 销售。
版权©2015由麦格劳-希尔 (亚洲) 教育出版公司与北京大学医学出版社所有。
本书封面贴有McGraw-Hill Education公司防伪标签, 无标签者不得销售。

北京市版权局著作权合同登记号: 01-2014-6002

威廉姆斯妇科学 (第2版)

原 著: Barbara L. Hoffman, John O. Schorge, Joseph I. Schaffer, 等
出版发行: 北京大学医学出版社
电 话: 发行部 010-82802230; 图书邮购 010-82802495
地 址: (100191) 北京市海淀区学院路38号 北京大学医学部院内
网 址: <http://www.pumpress.com.cn>
E-mail: booksale@bjmu.edu.cn
印 刷: 北京圣彩虹制版印刷技术有限公司
经 销: 新华书店
责任编辑: 冯智勇 责任印制: 李 啸
开 本: 889mm×1194mm 1/16 印张: 89 字数: 3560千字
版 次: 2015年1月第1版 2015年1月第1次印刷
书 号: ISBN 978-7-5659-0926-9
定 价: 686.00元
版权所有, 违者必究
(凡属质量问题请与本社发行部联系退换)

出版说明

曾为读者奉献了产科学经典巨著——《威廉姆斯产科学》的美国达拉斯Parkland医院的妇产科团队，再次为我们奉献了妇科学巨著——《威廉姆斯妇科学》（第2版）。

《威廉姆斯妇科学》内容涵盖了普通妇科、生殖内分泌和不孕、妇科泌尿以及妇科肿瘤等几乎所有妇科疾病，并以前所未有的广度和深度呈现给大家。

本书将教科书式的知识讲授和手术图谱有机结合。600余幅精美的插图能极好地帮助读者理解文章内容，大量的诊断流程图及表格简明易懂地阐明了鉴别诊断和最佳治疗方案的选择。500余幅手术图示生动展示了妇科手术的过程和技巧，并对具体细节进行了详尽的说明，便于读者理解掌握。

新版《威廉姆斯妇科学》全面反映了当前妇科学的最新进展，尤其是微创手术、妇科肿瘤治疗以及辅助生殖技术等。

本书与《威廉姆斯产科学》各具特色，并驾齐驱，同为国际妇产科学的经典之作，不但有助于您获取最新、最权威的专业知识，而且可以阅读经典教科书地道、专业的英语，为高端专业人士必备参考书。

北京大学医学出版社

NOTICE

Medicine is an ever-changing science. As new research and clinical experience broaden our knowledge, changes in treatment and drug therapy are required. The authors and the publisher of this work have checked with sources believed to be reliable in their efforts to provide information that is complete and generally in accord with the standards accepted at the time of publication. However, in view of the possibility of human error or changes in medical sciences, neither the authors nor the publisher nor any other party who has been involved in the preparation or publication of this work warrants that the information contained herein is in every respect accurate or complete, and they disclaim all responsibility for any errors or omissions or for the results obtained from use of the information contained in this work. Readers are encouraged to confirm the information contained herein with other sources. For example and in particular, readers are advised to check the product information sheet included in the package of each drug they plan to administer to be certain that the information contained in this work is accurate and that changes have not been made in the recommended dose or in the contraindications for administration. This recommendation is of particular importance in connection with new or infrequently used drugs.

DEDICATION

This second edition of *Williams Gynecology* is dedicated with great appreciation to Dr. Steven L. Bloom, Chairman of the Department of Obstetrics and Gynecology at the University of Texas Southwestern Medical Center at Dallas. During his tenure as chairman, Steve has been a stalwart supporter of both editions of *Williams Gynecology*. His insight into the needs of authors

stems no doubt from his work as one of the editors of our textbook patriarch—*Williams Obstetrics*. As chairman, his vision and leadership have created an environment in which critical evidence-based academic projects can flourish. We have benefited from his effective use of resources, commitment to excellence, and dedication to the advancement of medical education.

EDITORS

Barbara L. Hoffman, MD

Associate Professor, Department of Obstetrics and Gynecology
University of Texas Southwestern Medical Center at Dallas

John O. Schorge, MD

Director, Division of Gynecologic Oncology Fellowship
Associate Professor, Department of Obstetrics and Gynecology
Massachusetts General Hospital–Harvard Medical School

Joseph I. Schaffer, MD

Holder, Frank C. Erwin, Jr. Professorship in Obstetrics
and Gynecology

Director, Division of Gynecology

Director, Division of Female Pelvic Medicine and
Reconstructive Surgery

Professor, Department of Obstetrics and Gynecology

University of Texas Southwestern Medical Center at Dallas

Chief of Gynecology, Parkland Memorial Hospital, Dallas

Lisa M. Halvorson, MD

Professor, Department of Obstetrics and Gynecology

University of Texas Southwestern Medical Center at Dallas

Karen D. Bradshaw, MD

Holder, Helen J. and Robert S. Strauss and Diana K. and
Richard C. Strauss Distinguished Chairmanship in
Women's Health

Director, Lowe Foundation Center for Women's Preventative
Health Care

Associate Residency Program Director, Department of Obstetrics
and Gynecology

Professor, Department of Obstetrics and Gynecology

Professor, Department of Surgery

University of Texas Southwestern Medical Center at Dallas

F. Gary Cunningham, MD

Holder, Beatrice and Miguel Elias Distinguished Chair in
Obstetrics and Gynecology

Professor, Department of Obstetrics and Gynecology

University of Texas Southwestern Medical Center at Dallas

Atlas Art Director

Lewis E. Calver, MS, CMI, FAMI

Chairman, Biomedical Communications Graduate Program

Director, Biomedical Illustration Graduate Studies

Associate Professor, Department of Biomedical Communications

University of Texas Southwestern Medical Center at Dallas

CONTRIBUTORS

Victor E. Beshay, MD

Assistant Professor, Department of Obstetrics and Gynecology
University of Texas Southwestern Medical Center at Dallas

Chapter 10: Endometriosis

Karen D. Bradshaw, MD

Holder, Helen J. and Robert S. Strauss and Diana K. and Richard C.
Strauss Chairmanship in Women's Health

Director, Lowe Foundation Center for Women's Preventative Health
Care

Associate Residency Program Director, Department of Obstetrics
and Gynecology

Professor, Department of Obstetrics and Gynecology

Professor, Department of Surgery

University of Texas Southwestern Medical Center at Dallas

Chapter 13: Psychosocial Issues and Female Sexuality

Chapter 18: Anatomic Disorders

Chapter 21: Menopausal Transition

Chapter 22: The Mature Woman

Anna R. Brandon, PhD, MCS, ABPP

Women's Mood Disorders Center

Department of Psychiatry

University of North Carolina at Chapel Hill School of Medicine

Chapter 13: Psychosocial Issues and Female Sexuality

Bruce R. Carr, MD

Holder, Paul C. MacDonald Distinguished Chair in Obstetrics and
Gynecology

Director, Division of Reproductive Endocrinology and Infertility
Fellowship Program

Professor, Department of Obstetrics and Gynecology

University of Texas Southwestern Medical Center at Dallas

Chapter 10: Endometriosis

Kelley S. Carrick, MD

Associate Professor, Department of Pathology

University of Texas Southwestern Medical Center at Dallas

Director of Surgical Pathology Images for Williams Gynecology

Marlene M. Corton, MD

Associate Residency Program Director, Department of Obstetrics
and Gynecology

Associate Professor, Department of Obstetrics and
Gynecology

University of Texas Southwestern Medical Center at Dallas

Chapter 25: Anal Incontinence and Functional Anorectal Disorders

Chapter 38: Anatomy

F. Gary Cunningham, MD

Holder, Beatrice and Miguel Elias Distinguished Chair in Obstetrics
and Gynecology

Professor, Department of Obstetrics and Gynecology

University of Texas Southwestern Medical Center at Dallas

Chapter 5: Contraception and Sterilization

Chapter 6: First-Trimester Abortion

Chapter 38: Anatomy

Kevin J. Doody, MD

Director, Center for Assisted Reproduction, Bedford, TX

Director, In Vitro Fertilization Laboratory at the University of Texas
Southwestern

Associate Professor, Department of Obstetrics and Gynecology

University of Texas Southwestern Medical Center at Dallas

Chapter 20: Treatment of the Infertile Couple

David M. Euhus, MD

Holder, Marilyn R. Corrigan Distinguished Chair in Breast Cancer
Surgery

Director of Clinical Cancer Genetics in the Simmons

Comprehensive Cancer Center

Professor, Department of Surgery

University of Texas Southwestern Medical Center at Dallas

Chapter 12: Breast Disease

Rajiv B. Gala, MD, FACOG

Residency Program Director, Department of Obstetrics and Gynecology

Ochsner Clinic Foundation

Associate Professor of Obstetrics and Gynecology

University of Queensland

Ochsner Clinical School

Chapter 7: Ectopic Pregnancy

Chapter 39: Perioperative Considerations

William F. Griffith, MD

Medical Director, Intermediate Care Center

Director, Vulvology Clinic

Co-Director, Dysplasia Services

Parkland Health and Hospital System, Dallas, Texas

Associate Professor, Department of Obstetrics and Gynecology

University of Texas Southwestern Medical Center at Dallas

Chapter 29: Preinvasive Lesions of the Lower Genital Tract

Lisa M. Halvorson, MD

Professor, Department of Obstetrics and Gynecology

University of Texas Southwestern Medical Center at Dallas

Chapter 6: First-Trimester Abortion

Chapter 15: Reproductive Endocrinology

Chapter 16: Amenorrhea

Chapter 19: Evaluation of the Infertile Couple

Cherine A. Hamid, MD

Assistant Professor, Department of Obstetrics and Gynecology

University of Texas Southwestern Medical Center at Dallas

Chapter 40: Intraoperative Considerations

Alison Brooks Heinzman, MD

Assistant Professor, Department of Obstetrics and Gynecology

University of Texas Southwestern Medical Center at Dallas

Chapter 9: Pelvic Mass

David L. Hemsell, MD

Clinical Professor, Department of Obstetrics and Gynecology

University of Texas Southwestern Medical Center at Dallas

Chapter 3: Gynecologic Infection

Barbara L. Hoffman, MD

Associate Professor, Department of Obstetrics and Gynecology
University of Texas Southwestern Medical Center at Dallas

Chapter 1: Well Woman Care

Chapter 8: Abnormal Uterine Bleeding

Chapter 9: Pelvic Mass

Chapter 11: Pelvic Pain

Chapter 40: Intraoperative Considerations

Chapter 41: Surgeries for Benign Gynecologic Conditions

Chapter 43: Surgeries for Female Pelvic Reconstruction

Siobhan M. Kehoe, MD

Assistant Professor, Department of Obstetrics and Gynecology
University of Texas Southwestern Medical Center at Dallas

Chapter 44: Surgeries for Gynecologic Malignancies

Kimberly A. Kho, MD, MPH

Assistant Professor, Department of Obstetrics and Gynecology
University of Texas Southwestern Medical Center at Dallas

Chapter 42: Minimally Invasive Surgery

Jayanthi S. Lea, MD

Assistant Professor, Department of Obstetrics and Gynecology
University of Texas Southwestern Medical Center at Dallas

Chapter 31: Vulvar Cancer

Eddie H. McCord, MD

Assistant Professor, Department of Obstetrics and Gynecology
University of Texas Southwestern Medical Center at Dallas

Academic Contributor: Benign Gynecology Atlas Art

David Scott Miller, MD, FACOG, FACS

Holder, Dallas Foundation Chair in Gynecologic Oncology
Medical Director of Gynecology Oncology

Parkland Health and Hospital System, Dallas, Texas

Director, Gynecologic Oncology Fellowship Program

Director of Gynecologic Oncology

Professor, Department of Obstetrics and Gynecology

University of Texas Southwestern Medical Center at Dallas

Chapter 33: Endometrial Cancer

Chapter 34: Uterine Sarcoma

Elysia Moschos, MD

Associate Professor, Department of Obstetrics and Gynecology
University of Texas Southwestern Medical Center at Dallas

Chapter 2: Techniques Used for Imaging in Gynecology

Director of Radiologic Images for Williams Gynecology

Phuc D. Nguyen, MD

Former Associate Professor, Department of Radiation
Oncology

University of Texas Southwestern Medical Center at Dallas

Chapter 28: Principles of Radiation Therapy

Mary Jane Pearson, MD

Director, Resident Continuity Clinic

Director, Fourth-year Medical Student Programs

Associate Professor, Department of Obstetrics and Gynecology

University of Texas Southwestern Medical Center at Dallas

Chapter 1: Well Woman Care

David D. Rahn, MD

Assistant Professor, Department of Obstetrics and Gynecology
University of Texas Southwestern Medical Center at Dallas

Chapter 23: Urinary Incontinence

Debra L. Richardson, MD, FACOG

Assistant Professor, Department of Obstetrics and Gynecology
University of Texas Southwestern Medical Center at Dallas

Chapter 31: Cervical Cancer

Chapter 32: Vaginal Cancer

David E. Rogers, MD, MBA

Assistant Professor, Department of Obstetrics and Gynecology
University of Texas Southwestern Medical Center at Dallas

Chapter 11: Pelvic Pain

John O. Schorge, MD, FACOG, FACS

Director, Division of Gynecologic Oncology

Associate Professor, Department of Obstetrics and Gynecology

Massachusetts General Hospital – Harvard Medical School

Chapter 27: Principles of Chemotherapy

Chapter 33: Endometrial Cancer

Chapter 34: Uterine Sarcoma

Chapter 35: Epithelial Ovarian Cancer

Chapter 36: Ovarian Germ Cell and Sex-cord-Stromal Tumors

Chapter 37: Gestational Trophoblastic Disease

Chapter 43: Surgeries for Gynecologic Malignancies

Joseph I. Schaffer, MD

Holder, Frank C. Erwin, Jr. Professorship in Obstetrics and
Gynecology

Chief of Gynecology

Parkland Health and Hospital System, Dallas, Texas

Director, Division of Gynecology

Director, Division of Female Pelvic Medicine and Reconstructive
Surgery

Professor, Department of Obstetrics and Gynecology

University of Texas Southwestern Medical Center at Dallas

Chapter 24: Pelvic Organ Prolapse

Chapter 43: Surgeries for Female Pelvic Reconstruction

Manisha Sharma, MD

Assistant Professor, Department of Obstetrics and Gynecology
University of Texas Southwestern Medical Center at Dallas

Chapter 8: Abnormal Uterine Bleeding

Geetha Shivakumar, MD, MS

Mental Health Trauma Services, Dallas VA Medical Center

Assistant Professor, Department of Psychiatry

University of Texas Southwestern Medical Center at Dallas

Chapter 13: Psychosocial Issues and Female Sexuality

Gretchen S. Stuart, MD, MPHTM

Director, Family Planning Program

Director, Fellowship in Family Planning

Assistant Professor, Department of Obstetrics and Gynecology

University of North Carolina at Chapel Hill

Chapter 5: Contraception and Sterilization

Mayra J. Thompson, MD, FACOG

Associate Professor, Department of Obstetrics and Gynecology
University of Texas Southwestern Medical Center at Dallas

Chapter 42: Minimally Invasive Surgery

Contributors

Diane M. Twickler, MD, FACR

Holder, Fred Bonte Professorship in Radiology
Vice-Chairman of Academic Affairs
Professor, Department of Radiology
Professor, Department of Obstetrics and Gynecology
University of Texas Southwestern Medical Center at Dallas
Chapter 2: Techniques Used for Imaging in Gynecology
Director of Radiologic Images for Williams Gynecology

Clifford Y. Wai, MD

Director, Fellowship Program in Female Pelvic Medicine and
Reconstructive Surgery Associate
Professor, Department of Obstetrics and Gynecology
University of Texas Southwestern Medical Center at Dallas
Chapter 23: Urinary Incontinence
Chapter 26: Genitourinary Fistulas and Urethral Diverticulum

Claudia L. Werner, MD

Medical Director of Dysplasia Services
Co-Director Vulvology Clinic
Parkland Health and Hospital System, Dallas, Texas
Associate Professor, Department of Obstetrics and Gynecology
University of Texas Southwestern Medical Center at Dallas
Chapter 29: Preinvasive Lesions of the Lower Genital Tract

Ellen E. Wilson, MD

Director of Pediatric and Adolescent Gynecology Program
Children's Medical Center, Dallas, Texas
Associate Professor, Department of Obstetrics and Gynecology
University of Texas Southwestern Medical Center at Dallas
Chapter 14: Pediatric Gynecology
Chapter 17: Polycystic Ovarian Syndrome and Hyperandrogenism

Larry E. Word, MD

Professor, Department of Obstetrics and Gynecology
University of Texas Southwestern Medical Center at Dallas
Chapter 41: Surgeries for Benign Gynecologic Conditions

ARTISTS

Artist renderings in our surgical atlas were produced by the Chair of the Biomedical Communications Graduate Program and students and faculty within that program.

The world's first degree in medical illustration was awarded by Southwestern Medical School in 1947. Currently, this is one of five accredited medical illustration programs in North America. For those accepted into the program, a Master of Arts degree in Biomedical Communications—Biomedical Illustration is offered by Southwestern School of Health Professions at The University of Texas Southwestern Medical Center at Dallas. The program is two years in length, and a maximum of seven students is now accepted annually.

The program is offered through the Department of Biomedical Communications, and courses are taught by faculty of The University of Texas Southwestern Medical School, Southwestern

Graduate School of Biomedical Sciences, and Southwestern School of Health Professions. The program is accredited by the Commission on Accreditation of Allied Health Education Programs and the Association of Medical Illustrators. Mr. Lewis E. Calver has been Program Chairman since 1980.

The program is interdisciplinary. It provides opportunities for development of special knowledge and skills in the application of communication arts and technology to the health sciences. Study of human anatomy, cell biology, neurobiology, and pathology is combined with experience in anatomic, surgical, editorial, and advertising illustration; computer graphics and animation; graphic design; multimedia production; interactive computer-assisted instruction; and instructional design. Additional skills may also be developed in biological illustration, three-dimensional media production, exhibit design, and photography.

Primary Atlas Artists

Lewis E. Calver, MS, CMI, FAMI

Chairman, Biomedical Communications Graduate Program
Director, Biomedical Illustration Graduate Studies
Associate Professor, Department of Biomedical Communications
University of Texas Southwestern Medical Center at Dallas

SangEun Cha

Graduate, Biomedical Communications Graduate Program
University of Texas Southwestern Medical Center at Dallas

Erin Frederikson

Graduate, Biomedical Communications Graduate Program
University of Texas Southwestern Medical Center at Dallas

Alexandra Gordon

Graduate, Biomedical Communications Graduate Program
University of Texas Southwestern Medical Center at Dallas

Jordan Pietz

Graduate, Biomedical Communications Graduate Program
University of Texas Southwestern Medical Center at Dallas

Marie Sena

Graduate, Biomedical Communications Graduate Program
University of Texas Southwestern Medical Center at Dallas

Maya Shoemaker

Graduate, Biomedical Communications Graduate Program
University of Texas Southwestern Medical Center at Dallas

Jennie Swensen

Graduate, Biomedical Communications Graduate Program
University of Texas Southwestern Medical Center at Dallas

Amanda Tomasikiewicz

Graduate, Biomedical Communications Graduate Program
University of Texas Southwestern Medical Center at Dallas

Kristin Yang

Graduate, Biomedical Communications Graduate Program
University of Texas Southwestern Medical Center at Dallas

Contributing Atlas Artists

Katherine Brown

Graduate, Biomedical Communications Graduate Program
University of Texas Southwestern Medical Center at Dallas

T. J. Fels

Graduate, Biomedical Communications Graduate Program
University of Texas Southwestern Medical Center at Dallas

Kimberly Hoggatt-Krumwiede

Associate Professor, Biomedical Communications Graduate Program
University of Texas Southwestern Medical Center at Dallas

Richard P. Howdy, Jr.

Former Instructor, Biomedical Communications Graduate Program
University of Texas Southwestern Medical Center at Dallas

Belinda Klein

Graduate, Biomedical Communications Graduate Program
University of Texas Southwestern Medical Center at Dallas

Anne Matuskowitz

Graduate, Biomedical Communications Graduate Program
University of Texas Southwestern Medical Center at Dallas

Lindsay Oksenberg

Graduate, Biomedical Communications Graduate Program
University of Texas Southwestern Medical Center at Dallas

Kimberly VanExel

Graduate, Biomedical Communications Graduate Program
University of Texas Southwestern Medical Center at Dallas

PREFACE

The first edition of *Williams Obstetrics* was published over a century ago. Since then, the editors of this seminal text have presented a comprehensive and evidenced-based discussion of obstetrics. Patterned after our patriarch, *Williams Gynecology* provides a thorough presentation of gynecology's depth and breadth. In Section 1, general gynecology topics are covered. Section 2 provides chapters covering reproductive endocrinology and infertility. The developing field of Female Pelvic Medicine and Reconstructive Surgery is presented in Section 3. In Section 4, gynecologic oncology is discussed.

Traditionally, gynecologic information has been offered within the format of either a didactic text or a surgical atlas.

However, because the day-to-day activities of a gynecologist blends these two, so too did we. The initial four sections of our book describe the evaluation and medical treatment of gynecologic problems. The remaining two sections focus on the surgical patient. Section 5 offers detailed anatomy and a discussion of perioperative consideration. Our final section presents an illustrated atlas for the surgical correction of conditions described in Sections 1 through 4. Although discussions of disease evaluation and treatment are evidence based, our text strives to assist the practicing gynecologist and resident. Accordingly, chapters are extensively complemented by illustrations, photographs, diagnostic algorithms, and treatment tables.

ACKNOWLEDGMENTS

During the creation and production of our textbook, we were lucky to have the assistance and support of countless talented professionals both within and outside our department.

First, a task of this size could not be completed without the unwavering support provided by our Department Chairman, Dr. Steven Bloom, and Vice-Chairman, Dr. Barry Schwarz. Their financial and academic endorsement of our efforts has been essential.

Without their academic vision and expert distribution of departmental resources, this undertaking could not have flourished.

In constructing a compilation of this breadth, the expertise of physicians from several departments was needed to add vital, contemporaneous information. We were fortunate to have Dr. Diane Twickler, with joint appointments in the Department of Radiology and Department of Obstetrics and Gynecology, add her insight and knowledge as a specialist in gynecologic radiology. From the Department of Pathology, Dr. Kelley Carrick shared generously from her cadre of outstanding images. She translated her extensive knowledge of gynecologic pathology into concepts relevant for the general gynecologist. Many thanks are extended to Dr. Phuc Nguyen, recently retired from the Department of Radiation Oncology. Dr. Nguyen masterfully explained difficult physics concepts in easy-to-comprehend terms and brought a greatly appreciated enthusiasm to our project. In addition, we are appreciative of the valuable insight and critique provided to this same chapter by Dr. William Hittson. From the Department of Surgery, Dr. David Euhus lent his considerable knowledge of breast disease to contribute both classical and state-of-the-art information to his chapter. His broad research and clinical expertise provided the foundation for his truly comprehensive chapter. From the Department of Psychiatry here at University of Texas Southwestern Medical Center at Dallas and from the University of North Carolina at Chapel Hill School of Medicine, we were lucky to have Drs. Geetha Shivakumar and Anna Brandon, who provided an extensive discussion of psychosocial issues. They expertly distilled a broad topic into a logically organized, practical, and complete presentation. In addition, Dr. Gretchen Stuart, formerly of our department and now a faculty member at the University of North Carolina's Department of Obstetrics and Gynecology, lent her considerable talents in summarizing contraceptive methods and sterilization techniques. Her skillful reorganization of this chapter presents newer trends in contraception counseling. Many warm thanks are extended to Dr. Rajiv Gala, also formerly of our department and now of the Ochsner Clinic. Rajiv masterfully organized and summarized chapters on ectopic pregnancy and perioperative practice. His extensive review of the literature and evidence-based writing shines through both chapters. We thank Dr. Richard Penson,

Clinical Director of Medical Gynecologic Oncology at Massachusetts General Hospital. His assistance added significantly to our chapter on chemotherapy fundamentals. Dr. Stephen Heartwell is the Deputy Director of Domestic Programs for the Susan Thompson Buffett Foundation. He served as an important resource for our discussion of first-trimester abortion services.

The beautiful and detailed artwork in our atlas was drawn by the gifted graduate students and Chair of the Biomedical Communications Graduate Program, here at the University of Texas Southwestern Medical Center at Dallas. Graduate students SangEun Cha, Alexandra Gordon, Jennie Swensen, Amanda Tomasikiewicz, and Kristin Yang spent countless hours observing surgical procedures, sketching operative steps, and consulting with surgeons. Their efforts added priceless content to our atlas chapters. We also acknowledge the efforts of our atlas artists from the first edition: Erin Frederikson, Jordan Pietz, Marie Sena, and Maya Shoemaker. Additionally, alumni from the Program provided seminal pieces and include Katherine Brown, Thomas "TJ" Fels, Belinda Klein, Anne Matuskowitz, Lindsay Oksenberg, Constance Tilden, Kimberly VanExel, and faculty member Richard P. Howdy, Jr. Also, Ms. Kimberly Hoggatt-Krumwiede graciously provided several image series to help clarify the steps and missteps of reproductive tract development. Overseeing this monumental task was the Program's Chair, Mr. Lewis Calver. In our first edition, Lew logged tremendous hours sketching art for the urogynecologic section of the atlas. For this edition, he paired his academic talents with Dr. Marlene Corton to create a comprehensive, ageless anatomy chapter. Both of these anatomists committed thankless hours in the cadaver laboratory and in the library to create academically new presentations of female reproductive anatomy. These renderings were crafted and tailored with the gynecologic surgeon in mind to depict important anatomy for these surgeries. Lew also coupled his talents with Drs. Mayra Thompson and Kimberly Kho to create complementary illustrations to their descriptions of minimally invasive procedures. His considerable artistic skills were rivaled only by his dedication to education. Lew added many more hours teaching and advising revisions with his talented students.

Within our own department, the list is too long and the words are too few to convey our heartfelt thanks to all of our department members for their generous contributions. First, Drs. Bruce Carr, David Hemsell, David Miller, and Larry Word, all with well-known and well-established careers, generously contributed their expertise without hesitation. We are indebted to them for their altruism toward our project. From our Gynecology Division, many thanks are extended to Drs. Diane Twickler and Elysia Moschos, who sculpted a clear and detailed summary of traditional and new gynecologic

imaging tools. For this edition, these authors updated radiologic images as needed to present ultimate examples of normal anatomy and gynecologic pathology. We were also lucky to have experts in the field of preinvasive lesions of the lower genital tract, Drs. Claudia Werner and William Griffith. They crafted an information-packed, contemporaneous discussion of this topic. In addition, Dr. Griffith has been a steadfast advocate of our project and has extensively added photographic content to many of our chapters. Dr. Eddie McCord worked closely with our medical artist to craft new content for our surgical atlas. His clinical experience and extensive knowledge of anatomy added greatly to the academic value of these illustrations. We were also fortunate to have the expert writing talents of Drs. Mayra Thompson and Kimberly Kho, who provided a clear and evidence-based discussion of minimally invasive surgery. With this second edition, new authors from the gynecology division added their academic expertise to many of the benign gynecology chapters. Our textbook benefitted greatly from the clinical and evidence-based information that Drs. Mary Jane Pearson, Alison Brooks Heinzman, David Rogers, and Manisha Sharma provided in their chapters.

Our Reproductive Endocrinology and Infertility Division also offered a deep bench of talented writers. Dr. Kevin Doody lent his considerable clinical and academic prowess in the treatment of infertility. He penned a chapter that clearly describes the current “state of the art” in this field. Dr. Doody was also a kind benefactor with his spectacular clinical photographs on the topic and contributed these generously to numerous chapters. In addition, Dr. Ellen Wilson brought her wealth of clinical experience to chapters on pediatric gynecology and androgen excess. With her expertise, she crafted chapters that presented practical, prescriptive, and comprehensive discussions of these topics. We are also appreciative of the contributions of a new member to our writing team, Dr. Victor Beshay. Victor teamed with Dr. Bruce Carr to thoroughly yet succinctly summarize the fundamentals of endometriosis.

Dr. Marlene Corton is a skilled urogynecologist and has written extensively on pelvic anatomy. We were thrilled to have her create stunning chapters on anatomy and anal incontinence. Also from the Urogynecology and Female Pelvic Reconstruction Division, Drs. Clifford Wai and David Rahn added expanded content and stellar drawings to our chapter on urinary incontinence. Dr. Wai also masterfully updated his chapter on vesicovaginal fistula and urethral diverticulum. Special thanks are extended to Dr. Ann Word and her contributions to our chapter on pelvic organ prolapse. Her expertise in extracellular matrix remodeling of the female reproductive tract added fundamental content to the discussion of prolapse physiology.

In addition to Drs. Miller and Schorge, the Division of Gynecologic Oncology provided other talented physicians and writers. The topic of vulvar cancer was thoroughly covered by Dr. Jayanthi Lea. Her strengths in clinical practice and resident teaching are evident in her well-organized and evidence-based chapter. We were also thrilled to have Dr. Debra Richardson present comprehensive, clinical discussions of cervical and vaginal cancer in her two chapters. Dr. Siobhan Kehoe lent her surgical expertise to clearly describe and illustrate new

laparoscopic and robotic sections to the gynecologic oncology surgical atlas.

Within our text, images add powerful descriptive content to our words. Accordingly, many, many thanks are extended to those who donated surgical and clinical photographs. Of our contributors, many beautiful photographs within our book were taken by Mr. David Gresham, Chief Medical Photographer at the University of Texas Southwestern Medical Center. Dave’s eye for detail, shading, and composition allowed even simple objects to shine and be illustrated to their full potential. Since this project’s early months, he has been an advocate and valued consultant. Our pathology images were presented at their best thanks to Mr. Mark Smith, a graphics designer here at the University of Texas Southwestern Medical Center. His expertise with micrographs improved the clarity and visual aesthetic of many of our microscopic images.

During preparation of this text, we benefited from the expert staff at the University of Texas Southwestern Medical Center at Dallas’ South Campus library. As with our first edition, a special “thank you” is extended to Ms. Herldine Radley. Ms. Radley served as priceless asset and expert in library services.

Many of our photographs were taken in the operating rooms at Parkland Hospital. The operative room staff consistently helped us obtain photographs. Moreover, they graciously accommodated our graduate art students as they observed surgeries for their illustration. Special thanks are extended to Ms. Karin Cooper. As is her style, Karin went above and beyond to assist us in securing the photographs that were needed to illustrate many of our chapters. Warm appreciation is similarly given to the operating room staff at University Hospital St. Paul. At St. Paul, our graduate art students were welcomed with open arms by the physicians and OR staff. Students observed, photographed, and queried as skilled surgeons operated. Graciously, Mr. Mack Holmes and Nurse Erlinda Yenchai kindly assisted us in coordinating artists and surgeons. Mr. Moses Walker served as our audiovisual specialist and allowed us to capture spectacular surgical images for our chapters.

In addition, our colleagues in the clinic system and Intermediate Care Center at Parkland Hospital were huge allies in our acquisition of images to illustrate normal and abnormal gynecologic findings. Vera Bell, Sharon Irvin, Mercedes Pineda, and Rebecca Winn, all women’s health care nurse practitioners, have been true supporters of our efforts, and we sincerely thank them.

We are truly indebted to our administrative staff, who tirelessly and meticulously typed and organized our content. For this project, we were lucky to have Ms. Connie Utterback serve as our primary administrative assistant. Connie was an integral part of our first edition as well as several editions of *Williams Obstetrics*. She brought her considerable experience, talents, careful attention to detail, and ever-present commitment again to this edition. We are greatly appreciative of her tremendous efforts and unique skills. In addition, Melinda Epstein, Barbara Moore, and Eureka Pinkney added their talents to our undertaking. Ms. Dina Trujillo was a valuable assistant in obtaining needed journal articles. She truly helped to keep our project evidence-based. None of our image and text production would

Acknowledgments

have been possible without the brilliant information technology team in our department. Knowledgeable and responsive, Mr. Charles Richards and Mr. Thomas Ames have supported our project since the first edition. We could not do our job without their expertise.

Williams Gynecology was sculpted into its final form by the talented and dedicated group at McGraw-Hill Publishing, Inc. Ms. Alyssa Fried has brought her considerable intelligence, energetic work ethic, and creativity to our project. Her attention to detail and organizational talents have kept our project on track through an array of potential hurdles with efficiency and style. Our words fall well short in expressing our gratitude. Dr. Anne Sydor has been a steadfast advocate of *Williams Gynecology* since our inaugural edition, and we extend warm thanks for her tremendous support. Ms. Sarah Granlund deserves a crown for her eagle-eyed organization of reams of permissions. Peter Boyle shepherded our book through production. We greatly appreciate his calm and efficient style.

Without the thoughtful, creative efforts of many, our textbook would be a barren wasteland of words. Integral to this process are Armen Ovsepyan and John Williams, at McGraw-Hill, and Alan Barnett of Alan Barnett Design. Special thanks are extended to Mr. Joseph Varghese and Dr. Shetoli Zhimomi at Thomson Digital. They and their artistic team assisted us in

revising many of our text images. Their attention to detail and accurate renderings added important academic support to our words. Our text took its final shape under the watchful care of our compositors at Aptara, Inc.

We offer a sincere “thank you” to our residents in training. Their curiosity keeps us energized to find new and effective ways to convey age-old as well as cutting-edge concepts. Their logical questions lead us to holes in our text and thereby always help us to improve our work. We extend special thanks to Dr. Emily Bradbury. Her critique of several of our benign gynecology chapters helped us identify chapter strengths and weaknesses to better serve our readers’ needs.

Moreover, the contributors to this text owe a significant debt to the women who have allowed us to participate in their care. The images and clinical expertise presented in this text would not have been possible without their collaborative spirit to help us move medical knowledge forward.

Lastly, we offer an enthusiastic and heartfelt “thank you” to our families and friends. Without their patience, generosity, and encouragement, this task would have been impossible. For them, too many hours with “the book” left them with new responsibilities. And importantly, time away from home left precious family memories unrealized. We sincerely thank you for your love and support.

CONTENTS

Editors	xiii
Contributors	xiv
Artists	xvii
Preface	xix
Acknowledgments	xx

SECTION 1

BENIGN GENERAL GYNECOLOGY

1. Well Woman Care	2	8. Abnormal Uterine Bleeding	219
2. Techniques Used for Imaging in Gynecology	33	9. Pelvic Mass	246
3. Gynecologic Infection	64	10. Endometriosis	281
4. Benign Disorders of the Lower Reproductive Tract	110	11. Pelvic Pain	304
5. Contraception and Sterilization	132	12. Breast Disease	333
6. First-Trimester Abortion	170	13. Psychosocial Issues and Female Sexuality	356
7. Ectopic Pregnancy	198	14. Pediatric Gynecology	382

SECTION 2

REPRODUCTIVE ENDOCRINOLOGY, INFERTILITY, AND THE MENOPAUSE

15. Reproductive Endocrinology	400	19. Evaluation of the Infertile Couple	506
16. Amenorrhea	440	20. Treatment of the Infertile Couple	529
17. Polycystic Ovarian Syndrome and Hyperandrogenism	460	21. Menopausal Transition	554
18. Anatomic Disorders	481	22. The Mature Woman	581

SECTION 3

FEMALE PELVIC MEDICINE AND RECONSTRUCTIVE SURGERY

23. Urinary Incontinence	606	25. Anal Incontinence and Functional Anorectal Disorders	659
24. Pelvic Organ Prolapse	633	26. Genitourinary Fistula and Urethral Diverticulum	677

SECTION 4

GYNECOLOGIC ONCOLOGY

27. Principles of Chemotherapy	692	33. Endometrial Cancer	817
28. Principles of Radiation Therapy	712	34. Uterine Sarcoma	839
29. Preinvasive Lesions of the Lower Genital Tract	730	35. Epithelial Ovarian Cancer	853
30. Cervical Cancer	769	36. Ovarian Germ Cell and Sex Cord-Stromal Tumors	879
31. Invasive Cancer of the Vulva	793	37. Gestational Trophoblastic Disease	898
32. Vaginal Cancer	808		