



CREATIVE & MODERN OFFICE Ⅲ

现代创意办公空间 Ⅲ

高迪国际出版有限公司 编

大连理工大学出版社

CREATIVE & MODERN OFFICE Ⅲ

现代创意办公空间 Ⅲ

高迪国际出版有限公司 编
李青云 邱凌云 译



图书在版编目(CIP)数据

现代创意办公空间. 3: 英汉对照 / 高迪国际出版
有限公司编; 李青云, 邱凌云译. — 大连: 大连理工
大学出版社, 2014.7

ISBN 978-7-5611-9144-6

I. ①现… II. ①高… ②李… ③邱… III. ①办公建
筑—建筑设计—英汉对照 IV. ①TU243

中国版本图书馆CIP数据核字(2014)第095543号

出版发行: 大连理工大学出版社

(地址: 大连市软件园路80号 邮编: 116023)

印刷: 上海锦良印刷厂

幅面尺寸: 245mm × 320mm

印 张: 22

插 页: 4

出版时间: 2014年7月第1版

印刷时间: 2014年7月第1次印刷

责任编辑: 初 蕾

责任校对: 王丹丹

封面设计: 高迪国际

ISBN 978-7-5611-9144-6

定 价: 348.00元

电 话: 0411-84708842

传 真: 0411-84701466

邮 购: 0411-84708943

E-mail: designbookdutp@gmail.com

URL: [http:// www.dutp.cn](http://www.dutp.cn)

如有质量问题请联系出版中心: (0411) 84709246 84709043

CONTENTS

目录

8

GOOGLE OFFICE

64

YANDEX SAINT
PETERSBURG OFFICE II

110

ENGINE INNOVATION
LABS

22

ONE WORKPLACE
HEADQUARTERS

76

SKYPE'S NORTH
AMERICAN
HEADQUARTERS

116

GOOGLE CSG
SUPER HQ

34

EBAY GITTIGIDIYOR

86

CASTROL OFFICE

126

UNILEVER OFFICE

46

OGILVY & MATHER,
JAKARTA

96

ROPEMAKER

136

JWT

56

TENCENT DAZU OFFICE

102

360 HQ OFFICE

144

RED BULL



156

SIDN

164

ENGINE OFFICES,
LONDON

174

B+L HQ

184

GOOGLE L3

198

HEAVYBIT

206

HQ SAMSUNG VIENNA

214

MICROSOFT BRIEFING
CENTER

220

ADIDAS WORKOUT

230

GOOGLE TOKYO

236

MICROSOFT
HEADQUARTERS IN
VIENNA

244

RED BULL CANADA
OFFICE

252

ISELECT

262

KAZAN YANDEX OFFICE

270

SQUARETRADE

278

ATLASSIAN OFFICES

288

SAHIBINDEN.COM OFFICE

296

YEMEKSEPETI.COM
OFFICE

304

OFFICE+SHOWROOM
FOR DK

312

AEGIS MEDIA

320

GRUPO GALLEGOS
CREATIVE
HEADQUARTERS

326

ASTRAL MEDIA

336

PEER 1 OFFICE

348

INDEX



CREATIVE & MODERN 现代创意办公空间 III OFFICE III

高迪国际出版有限公司 编
李青云 邱凌云 译

图书在版编目(CIP)数据

现代创意办公空间. 3: 英汉对照 / 高迪国际出版
有限公司编; 李青云, 邱凌云译. — 大连: 大连理工
大学出版社, 2014.7

ISBN 978-7-5611-9144-6

I. ①现… II. ①高… ②李… ③邱… III. ①办公建
筑—建筑设计—英汉对照 IV. ①TU243

中国版本图书馆CIP数据核字(2014)第095543号

出版发行: 大连理工大学出版社

(地址: 大连市软件园路80号 邮编: 116023)

印刷: 上海锦良印刷厂

幅面尺寸: 245mm × 320mm

印 张: 22

插 页: 4

出版时间: 2014年7月第1版

印刷时间: 2014年7月第1次印刷

责任编辑: 初 蕾

责任校对: 王丹丹

封面设计: 高迪国际

ISBN 978-7-5611-9144-6

定 价: 348.00元

电 话: 0411-84708842

传 真: 0411-84701466

邮 购: 0411-84708943

E-mail: designbookdutp@gmail.com

URL: [http:// www.dutp.cn](http://www.dutp.cn)

如有质量问题请联系出版中心: (0411) 84709246 84709043



序言 01

It was only thirty years ago when a personal computer Apple Lisa appeared. For the first time it used a graphical user interface and a mouse pointing device for individual business users. Since then we can say offices began to change fast as information technology has given a power kick-start to various branches of human activity, which resulted in dozens previously unthinkable professions. All those professions have one trend in common – they all are creative, focused on the intelligent, virtual product. These changes embodied in a new type of workspaces – offices for creative people. This kind of workspace expects lack of hard dress code and standard working day, the ability to switch from work to rest and vice versa. Employers had to revise their views on how workspace should look, which areas in the office are exactly required, which corporate values it should represent. Another challenge was to attract highly skilled employees, for which, as it turned out not only the location of the office was an important factor in particular, but its usability, ergonomics, recreational opportunities, visual appeal as well. We are one of the few companies in our country known primarily due to our innovative approaches in workspace construction. Our clients are mainly IT companies that come to us for “an unusual bright office”. Every time it's a complex, but exciting challenge – because it often happens that we have to use unusual methods and materials to achieve a certain visual effect or a non-trivial design. Merely in last two years, while working on office projects we had a chance to pick up pickling solutions for copper sheets, worked

with a magnetic coating, all kinds of acoustic materials, developed sails and hundred-meter lamps. We had to create submarine shaped flower pots, equipped offices with bars, covered walls and ceilings with carpet and designed polymer structures.

Our offices are filled with bright colors. Varnished concrete, original furniture and all kinds of complex geometric structures can be found there. As architects we should keep in mind that such a powerful “visual range” is a kind of responsibility. This responsibility extends far beyond the customer and his wishes – because there are hundreds or even thousands of employees who will stay in this workspace the most part of the day. Therefore, the major priority for us is to create humane conditions for employees and to take care about a variety of opportunities for relaxation and activity changing. Maybe this is a kind of self-limitation, perhaps even against our own creative impulses and ambitions.

The architecture is still based on the three Vitruvian's principles as it was two thousand years ago – durability, utility and beauty. Beauty, no wonder, is in the last place, so while creating a modern office, one should not forget the fact – beauty is important, but its role is secondary to functionality and comfort. I would generally expand Vitruvian triad in reference to the office design, and add to it the concept of “humanity” – as one of the most important criteria of the creative workspace.



Peter Zaytsev (Right)

Architect and Co-owner of za bor architects

三十年前问世的苹果 Lisa 个人计算机，首次采用了图形用户界面和鼠标定位装置技术。自那以后 IT 技术的发展为人类各种活动的改变和发展提供了强劲的推动力，办公场所也在迅速改变和发展着，这些改变和发展也产生了很多新型的以前不可预想的职业，这些新型的职业有着共同的发展趋向——富有创意、专注于产品的智能化和虚拟化。这种变化也在新型的专为创新型人才打造的办公场所中有所体现。新型的办公场所不需要严格的着装要求和标准的工作时间，其设置能让工作其中的员工很快地从工作状态转换到休息状态，或者从休息状态转换到工作状态。对于办公场所应该是什么样子、其中需要哪些功能区域、办公环境应该体现什么样的公司价值和理念等等问题，雇主也必须得改变自己的观念。办公场所的设计所面临的另一个挑战是要吸引技艺精湛的员工。事实证明，人们非常关注办公室的地理位置，同时也很关注办公场所的实用性、舒适度、娱乐设施和视觉效果。

我公司是全国为数不多的在办公场所的设计建设中因追求创新而闻名的公司之一。我们的客户主要是 IT 公司，他们要求我们为之打造出“非同寻常、色彩明丽的办公室”。几乎每个工程于我们都是错综复杂、激动人心的挑战，因为为了获得非凡的、独特的视觉效果，我们不得不使用一些非同寻常的方法和材料。比如，仅仅在过去的两年间，在办公空间的设计建造中我们利用了酸洗液来清洗铜板，使用了磁涂层和各种隔音材料，开发了帆布材质和百米长的灯饰；我们打造了状如潜艇的花盆，在办公场所建造吧台，用地毯和精心设计的高分子结构材料装饰墙面和天花板表面。

我们所打造的办公室色彩明丽，我们会在设计中使用涂漆的混凝土、原创家具和各种复杂的几何结构。作为建筑设计师，我们时刻铭记，创造超强的“可视范围”是一种责任。这种责任使我们打造的作品远远超出我们客户的预期——因为我们知道几百甚至上千的员工一天的绝大部分时间里都会待在我们所设计的办公室里，因而我们首先考虑的是为员工营造一种人性化的环境，让他们在这个办公场所中能有很多机会进行休息放松或转变工作内容。当然这样的考虑也许会为我们带来自我限制，也许会与我们的创作灵感和创作理念相违背。

现代的建筑依然基于两千年前就已经存在的 Vitruvian 三原则，即坚固性、实用性和美观度。无疑，在这三原则中美观度是最不重要的，所以在创建现代办公场所时，人们不应该忘记这样的事实——美观固然重要，但是更值得关注的是办公场所的功能性和舒适度。在现代办公建筑的设计建设中，我想在 Vitruvian 三原则的基础上再增加一条，即“人文性”，作为创新型办公空间的最重要的评判标准之一。

序言 02

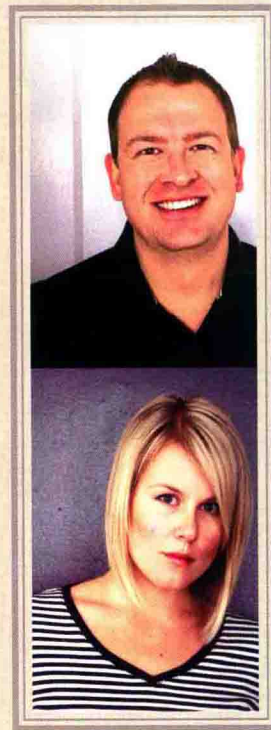
Thanks in large part to technological advances, the modern office is an increasingly connected one; collaboration now drives productivity, as opposed to solitary work. As a result, the landscape of the office itself is changing to be more open and collaborative.

Ideas flow freely when barriers are removed. It's no surprise then that private offices are less important, while benching systems and open office layouts become more popular every year. With the removal of these barriers, we're also seeing the modern office become more democratized. Whereas in previous eras, windows with views and natural light were reserved for executives with elusive corner offices, the contemporary workspace now is more likely to open up these views to everyone. It's not unusual to find CEO working out in the open office and collaborating directly with employees.

The global workforce as a whole is also more mobile than ever, and requires an equally flexible workspace. There is a greater need for spaces that can accommodate multiple functions – a work cafe, for example, that can also house all-hands meetings during the day and movie nights in the evening, or even, as we've seen in one case, a reception desk that doubles as a bar counter during happy hour. While a variety of design trends are at play in the modern office, from homey and rustic to sleek and modern, the overall focus is on making the office a flexible and welcoming space, one where users feel both comfortable and productive.

New workspaces also set forth the challenge to create more efficient, green, and earth-friendly environments. Companies are expressing a greater interest in efficient fixtures and recycled or multifunctional materials, which reduce energy costs, keep materials out of landfills, and reduce stress on the environment.

Whether the company is technology, finance, or retail based, new workplaces reveal an increasing focus on innovation – how to work in faster, smarter, and more exciting ways. The modern office not only encourages collaboration, but also gives users space to grow and develop better ways of working in the future.



Melissa Wallin
CEO of Design Blitz

Seth Hanley
Creative Director of Design Blitz

从很大程度上来说，由于科学技术的进步，现代办公空间各部门间的联系越来越紧密。现在，与孤立工作相对的各部门相互协作使生产效率越来越高。正因为此，办公空间的布局本身也在发生着变化，变得越来越开放，越来越体现合作理念。

禁锢一旦解除，各种观点就可源源不断地自由流淌。因此现在私人办公室越来越不受重视，而台架设备和开放式的办公室布局越来越受欢迎也就不再奇怪了。随着办公区域之间的壁障的拆除，现代办公氛围也变得日益民主。以前，留给机构管理层的办公室总是光线充足、窗外风景优美，并且一般位于略显神秘和安静的角落；而现在，这样的办公室，机构中的每个人都有机会得到。越来越多的公司总裁也都选择在开放的办公室里办公，直接与员工沟通协作。

从全球范围来看，劳动力总体流动性比以往任何时候的都大，与之相对应，办公场所也同样需要具有灵活性。这样就需要更多的具有多重功能的办公空间，比如办公楼的咖啡厅可在白天工作时间内用来主办全体工作人员大会，而到了晚上则可用作影院。我们甚至见过这样一个案例，办公室的前台在娱乐休闲时间里兼做吧台。在现代办公建筑的设计建造领域有很多流行趋势，但无论是居家式质朴风格的办公环境还是时髦现代派的办公环境，从总体来看，都是为了让办公环境更具灵活性和舒适度，让使用者们感觉舒适，工作起来更有成效。

现代办公场所的设计建造也面临这样的挑战，即办公场所应更高效、绿色、环保。众多公司也对高效设备、可再生材料和多功能材料表现出更浓厚的兴趣，这样的设备和材料能降低能耗，不浪费资源，减轻环境的压力。

不管是科技公司、金融公司还是零售类的商业公司，都越来越关注办公场所的创新性——怎样能促使员工更快、更敏捷、更激情澎湃地工作。现代办公建筑不光激发了员工的协作精神，也让他们在未来的工作中不断成长，开发更好工作方式。

CONTENTS

目录

8

GOOGLE OFFICE

64

YANDEX SAINT
PETERSBURG OFFICE II

110

ENGINE INNOVATION
LABS

22

ONE WORKPLACE
HEADQUARTERS

76

SKYPE'S NORTH
AMERICAN
HEADQUARTERS

116

GOOGLE CSG
SUPER HQ

34

EBAY GITTIGIDIYOR

86

CASTROL OFFICE

126

UNILEVER OFFICE

46

OGILVY & MATHER,
JAKARTA

96

ROPEMAKER

136

JWT

56

TENCENT DAZU OFFICE

102

360 HQ OFFICE

144

RED BULL



156

SIDN

164

ENGINE OFFICES,
LONDON

174

B+L HQ

184

GOOGLE L3

198

HEAVYBIT

206

HQ SAMSUNG VIENNA

214

MICROSOFT BRIEFING
CENTER

220

ADIDAS WORKOUT

230

GOOGLE TOKYO

236

MICROSOFT
HEADQUARTERS IN
VIENNA

244

RED BULL CANADA
OFFICE

252

ISELECT

262

KAZAN YANDEX OFFICE

270

SQUARETRADE

278

ATLASSIAN OFFICES

288

SAHIBINDEN.COM OFFICE

296

YEMEKSEPETI.COM
OFFICE

304

OFFICE+SHOWROOM
FOR DK

312

AEGIS MEDIA

320

GRUPO GALLEGOS
CREATIVE
HEADQUARTERS

326

ASTRAL MEDIA

336

PEER 1 OFFICE

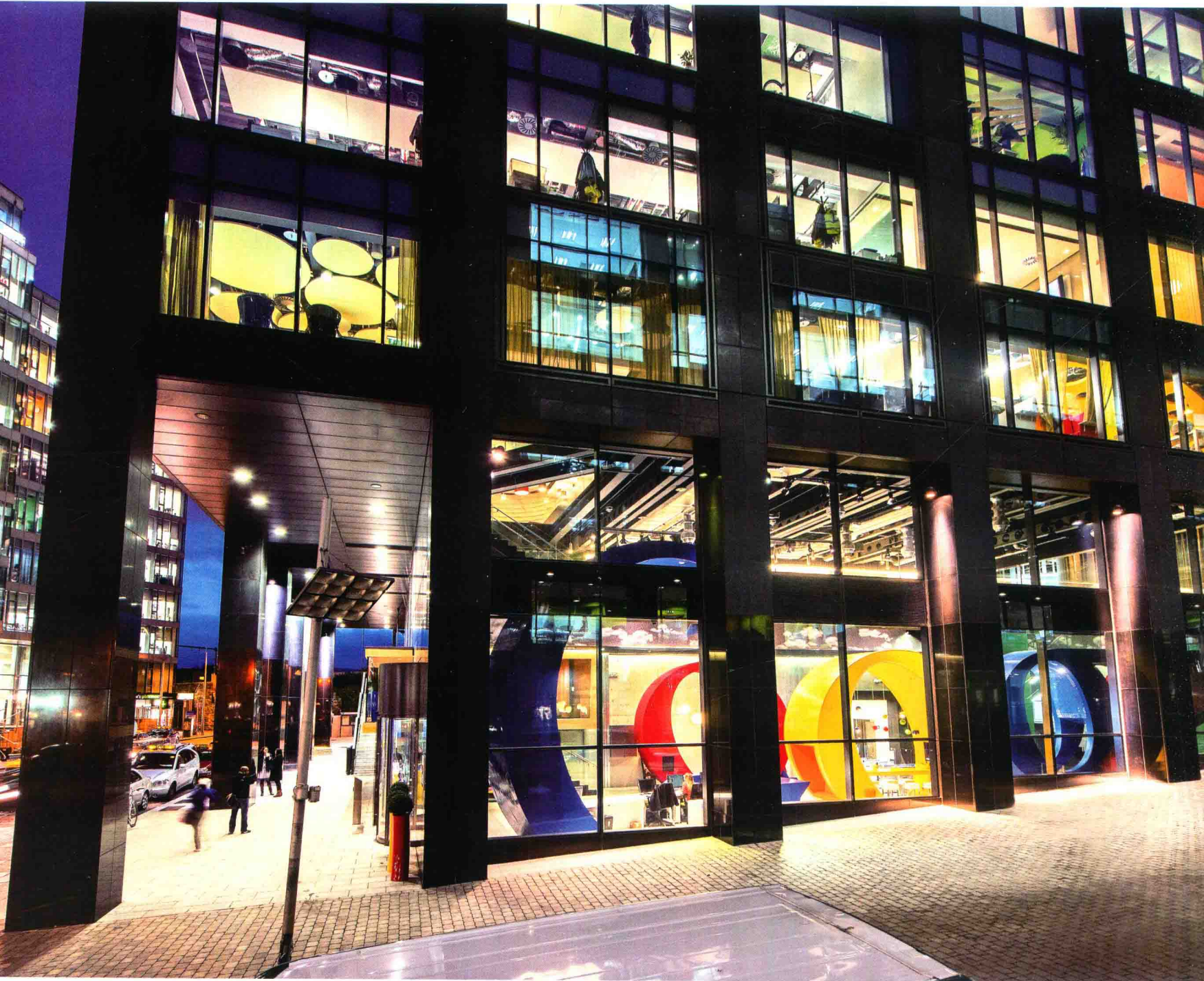
348

INDEX



GOOGLE OFFICE

DESIGNER Camenzind Evolution	ASSOCIATE Henry J. Lyons Architects	PROJECT MANAGEMENT, QS Gardiner and Theobald	MECHANICAL AND ELECTRICAL ENGINEERING Ethos, AxisEng
STRUCTURAL ENGINEERING AECOM	LEED CONSULTANCY Mott McDonald	PLANNING CONSULTANCY John Spain Associates	FIRE AND DAC CONSULTANCY Maurice Johnson & Partners
CATERING CONSULTANCY Tricon PLC	ACOUSTIC ENGINEERING I-Acoustics	AREA 47,000 m ² (Floor)	







Google Dublin – A thriving new campus boosting the spirit of innovation

Google Ireland opens the doors to its thriving new campus: Four buildings located in the heart of Dublin's historic docklands district! With over 47,000 m² of unique office space, the campus represents an amazing workplace for Google's ever growing sales, marketing, finance and engineering teams, coming from more than 65 countries and speaking over 45 languages.

The tallest of the four campus buildings is the newly constructed 14-storey building "Google Docks" which is also the tallest commercial building in Dublin. Two other buildings – "Gasworks House" and "Gordon House" – have been home for Google already and were completely refitted. The fourth building, "One Grand Canal" – fondly referred to as "1GC" – was newly fitted out.

For the Masterplan the architects had to find a smart solution for the nearly impossible – to create a stimulating and interactive campus within a bustling environment in the midst of the inner city. Apart from innovative office spaces, the Masterplan required the successful organization of a multitude of additional functions, such as 5 restaurants, 42 micro kitchens and communication hubs, game rooms, fitness center, pool, wellness areas, conference, learning & development center, tech stops, over 400 informal and formal meeting rooms and phone booths, etc. All these additional functions are part of the holistic work philosophy of Google, encouraging a balanced, healthy work environment and enabling as much interaction and communication between the Googlers as possible. In fact, as empirical researches and studies show, interaction and communication are crucial for creativity and innovation.

In order to achieve these important goals, the locations of all functions were very carefully balanced between the different floors and buildings. In addition, a bridge is planned to be built to connect "Google Docks", "Gasworks House" and "Gordon House" together, encouraging an easy flow between buildings and people.



