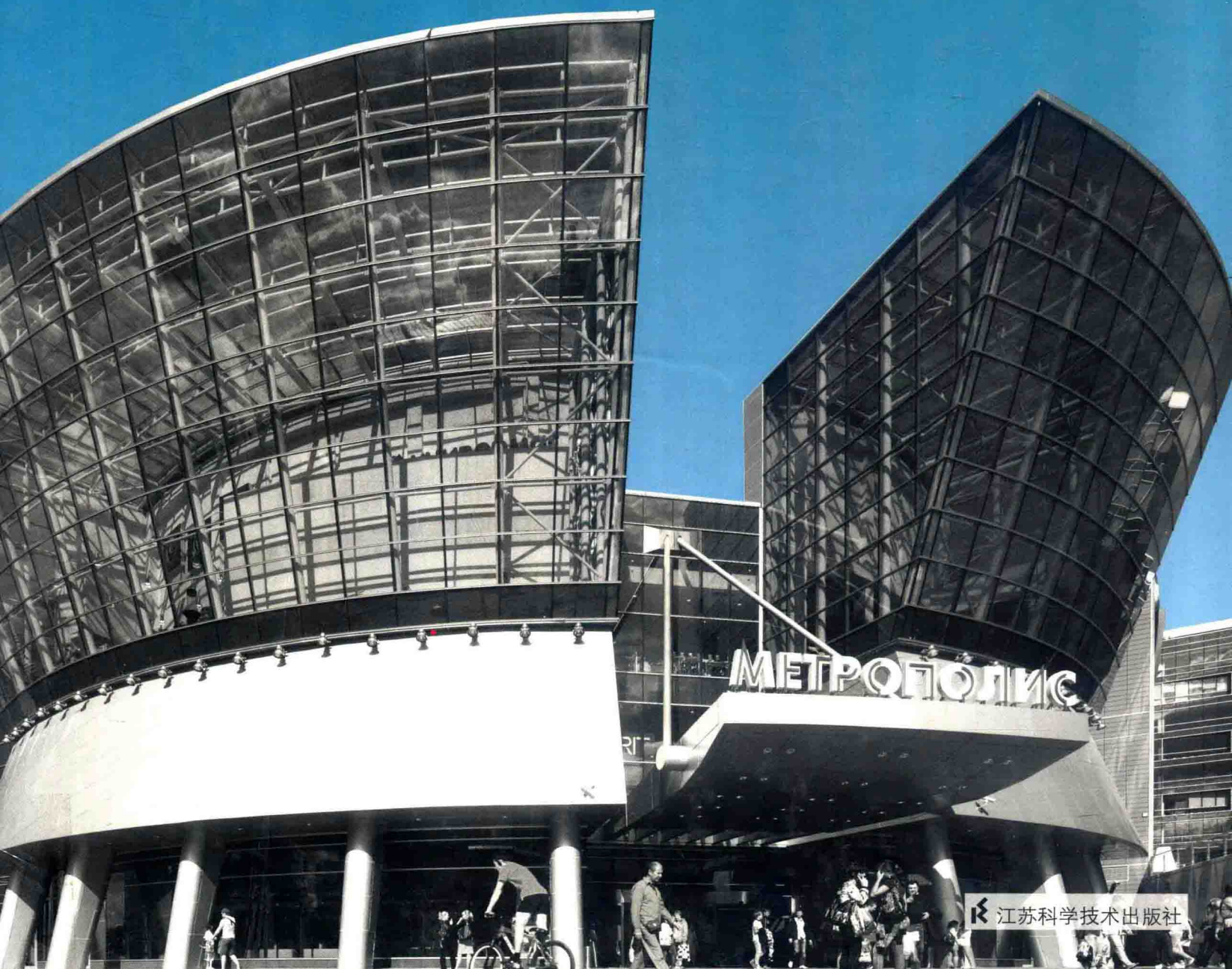


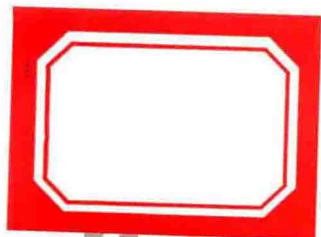
SHOPPING MALL

21世纪

购物中心 李志军 编



江苏科学技术出版社



SHOPPING MALL

21世纪

购物中心

李志军 编



图书在版编目 (C I P) 数据

21 世纪购物中心 / 李志军编. — 南京 : 江苏科学技术出版社, 2014.4

ISBN 978-7-5537-2941-1

I. ① 2… II. ① 李… III. ① 购物中心—建筑设计—世界—图集 IV. ① TU247.2-64

中国版本图书馆 CIP 数据核字 (2014) 第 045387 号

21世纪购物中心

| | |
|---------|----------|
| 编 者 | 李志军 |
| 项 目 策 划 | 凤凰空间/高雅婷 |
| 责 任 编 辑 | 刘屹立 |
| 特 约 编 辑 | 陈丽新 |

| | |
|---------|---|
| 出 版 发 行 | 凤凰出版传媒股份有限公司 江苏科学技术出版社 |
| 出版社地址 | 南京市湖南路1号A楼, 邮编: 210009 |
| 出版社网址 | http://www.pspress.cn |
| 总 经 销 | 天津凤凰空间文化传媒有限公司 |
| 总经销网址 | http://www.ifengspace.cn |
| 经 销 | 全国新华书店 |
| 印 刷 | 利丰雅高印刷 (深圳) 有限公司 |

| | |
|-----|--------------------------|
| 开 本 | 965 mm × 1 270 mm 1 / 16 |
| 印 张 | 21 |
| 字 数 | 168 000 |
| 版 次 | 2014年4月第1版 |
| 印 次 | 2014年4月第1次印刷 |

| | |
|---------|------------------------|
| 标 准 书 号 | ISBN 978-7-5537-2941-1 |
| 定 价 | 338.00元 (精) (USD65.00) |

图书如有印装质量问题, 可随时向销售部调换 (电话: 022-87893668) 。

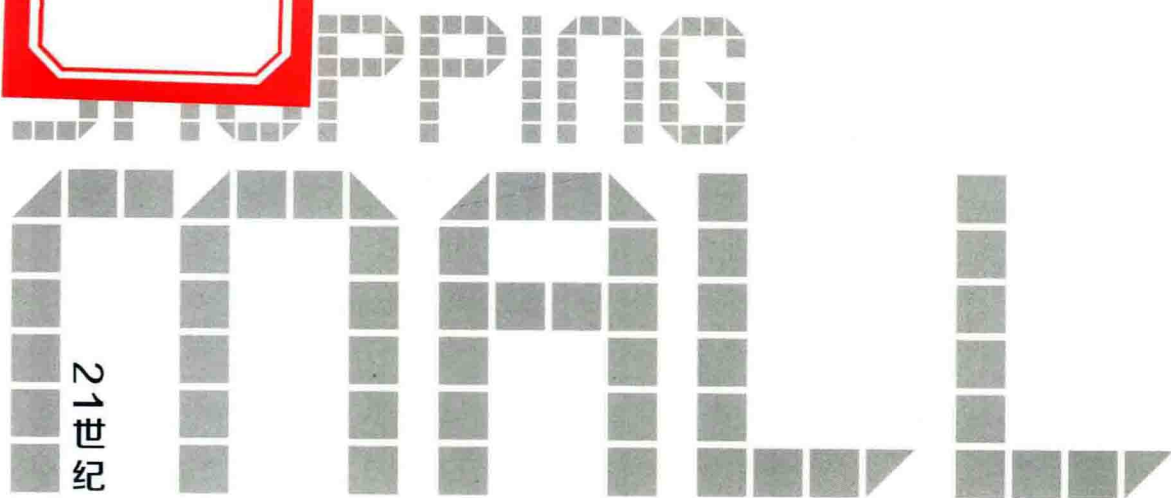
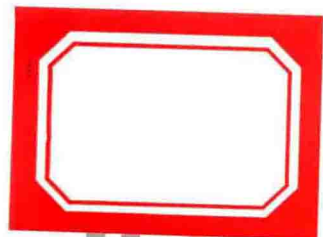


| | | | |
|--|-----|--|-----|
| AURA SHOPPING & ENTERTAINMENT CENTER AURA 购物娱乐中心 | 004 | HAIYA MEGA MALL 海雅缤纷城 | 098 |
| TARSU SHOPPING & ENTERTAINMENT CENTER TARSU 购物娱乐中心 | 016 | STARHILL GALLERY 升喜廊 | 108 |
| PENDORYA SHOPPING CENTER PENDORYA 购物中心 | 026 | JESOLO MAGICA SHOPPING MALL JESOLO MAGICA 购物中心 | 116 |
| BAHRAIN CITY CENTRE 巴林城市中心 | 038 | LOTTE SKY PARK 韩国乐天空中花园 | 122 |
| METROPOLIS 大都会 | 046 | DAEGU MOSAIC GARDENS 大邱马赛克花园 | 130 |
| GALERIA ECHO SHOPPING CENTER GALERIA ECHO 购物中心 | 056 | HASHIMOTO MALL HASHIMOTO 购物中心 | 144 |
| SETIA CITY MALL SETIA 城市购物中心 | 066 | MECENATPOLIS MECENATPOLIS 项目 | 158 |
| SKITERMINAL - SCHLADMING SKITERMINAL - 施拉德明 | 076 | THE CITY 7 MALL 昌原 CITY 7 购物中心 | 170 |
| AIRPORT MALL 机场购物中心 | 084 | OPTIMUM ADANA OPTIMUM ADANA 购物中心 | 180 |
| OLYMPIA 66 奥林匹亚 66 | 092 | KOZZY SHOPPING CENTER KOZZY 购物中心 | 188 |

CONTENTS

目录

| | | | |
|---|-----|--|-----|
| DAXING DISTRICT MIXED-USE DEVELOPMENT PROJECT 大兴区复合开发项目 | 198 | WESTFIELD SAN FRANCISCO 韦斯特菲尔德旧金山购物中心 | 280 |
| PARADISE WALK 上海虹桥天街 | 210 | BUYAKA BUYAKA 购物中心 | 286 |
| SUMMER INTERNATIONAL RETAIL & ENTERTAINMENT CENTER 世邦国际商贸中心 | 222 | PRIME MALL GAZIANTEP 加济安泰普普赖姆商场 | 294 |
| SKYLAND LALAPORT SKYLAND LALAPORT 综合购物中心 | 230 | DOT ENVELOPE DOT ENVELOPE 商场 | 302 |
| HYLLIE SHOPPING CENTER HYLLIE 购物中心 | 238 | SHANGHAI SEARS SHOPPING MALL 上海茜尔斯购物中心 | 308 |
| SALLING DEPARTMENT STORE - EXTENSION SALLING 百货商店 (扩建) | 246 | PENGLAI YUEDONG HARBOR 蓬莱悦动港湾 | 314 |
| CHEDRAUI SANTA FE 圣达非 CHEDRAUI 超级卖场 | 254 | TIANJIN GALAXY MALL 天津银河商业中心 | 324 |
| FESTIVAL WALK 又一城 | 262 | | |
| INTERSPAR FÜRSTENFELD INTERSPAR FÜRSTENFELD 超市 | 272 | | |



21世纪

购物中心

李志军 编

AURA SHOPPING & ENTERTAINMENT CENTER
AURA 购物娱乐中心 004

TARSU SHOPPING & ENTERTAINMENT CENTER
TARSU 购物娱乐中心 016

PENDORYA SHOPPING CENTER
PENDORYA 购物中心 026

BAHRAIN CITY CENTRE
巴林城市中心 038

METROPOLIS
大都会 046

GALERIA ECHO SHOPPING CENTER
GALERIA ECHO 购物中心 056

SETIA CITY MALL
SETIA 城市购物中心 066

SKITERMINAL - SCHLADMING
SKITERMINAL - 施拉德明 076

AIRPORT MALL
机场购物中心 084

OLYMPIA 66
奥林匹亚 66 092

HAIYA MEGA MALL
海雅缤纷城 098

STARHILL GALLERY
升喜廊 108

JESOLO MAGICA SHOPPING MALL
JESOLO MAGICA 购物中心 116

LOTTE SKY PARK
韩国乐天空中花园 122

DAEGU MOSAIC GARDENS
大邱马赛克花园 130

HASHIMOTO MALL
HASHIMOTO 购物中心 144

MECENATPOLIS
MECENATPOLIS 项目 158

THE CITY 7 MALL
昌原 CITY 7 购物中心 170

OPTIMUM ADANA
OPTIMUM ADANA 购物中心 180

KOZZY SHOPPING CENTER
KOZZY 购物中心 188

CONTENTS

目录

| | | | |
|---|-----|---|-----|
| DAXING DISTRICT MIXED-USE DEVELOPMENT PROJECT 大兴区复合开发项目 | 198 | WESTFIELD SAN FRANCISCO 韦斯特菲尔德旧金山购物中心 | 280 |
| PARADISE WALK 上海虹桥天街 | 210 | BUYAKA BUYAKA 购物中心 | 286 |
| SUMMER INTERNATIONAL RETAIL & ENTERTAINMENT CENTER 世邦国际商贸中心 | 222 | PRIME MALL GAZIANTEP 加济安泰普普赖姆商场 | 294 |
| SKYLAND LALAPORT SKYLAND LALAPORT 综合购物中心 | 230 | DOT ENVELOPE DOT ENVELOPE 商场 | 302 |
| HYLLIE SHOPPING CENTER HYLLIE 购物中心 | 238 | SHANGHAI SEARS SHOPPING MALL 上海赛尔斯购物中心 | 308 |
| SALLING DEPARTMENT STORE - EXTENSION SALLING 百货商店 (扩建) | 246 | PENGLAI YUEDONG HARBOR 蓬莱悦动港湾 | 314 |
| CHEDRAUI SANTA FE 圣达非 CHEDRAUI 超级卖场 | 254 | TIANJIN GALAXY MALL 天津银河商业中心 | 324 |
| FESTIVAL WALK 又一城 | 262 | | |
| INTERSPAR FÜRSTENFELD INTERSPAR FÜRSTENFELD 超市 | 272 | | |



AURA SHOPPING & ENTERTAINMENT CENTER

AURA 购物娱乐中心

Location: Novosibirsk, Russia

Employer: Renaissance Construction

Architectural Schematic Design: 5+ Design

Architecture Design: Yazgan Design Architecture

Landscape Design: Yazgan Design Architecture

Total Construction Area: 170,000 m²

Photography: Yunus Özkazanç - 2012

项目地点: 俄罗斯新西伯利亚

客户: Renaissance 建筑公司

方案设计: 5+ Design

建筑设计: Yazgan Design Architecture

景观设计: Yazgan Design Architecture

总建筑面积: 170 000 m²

摄影: Yunus Özkazanç - 2012



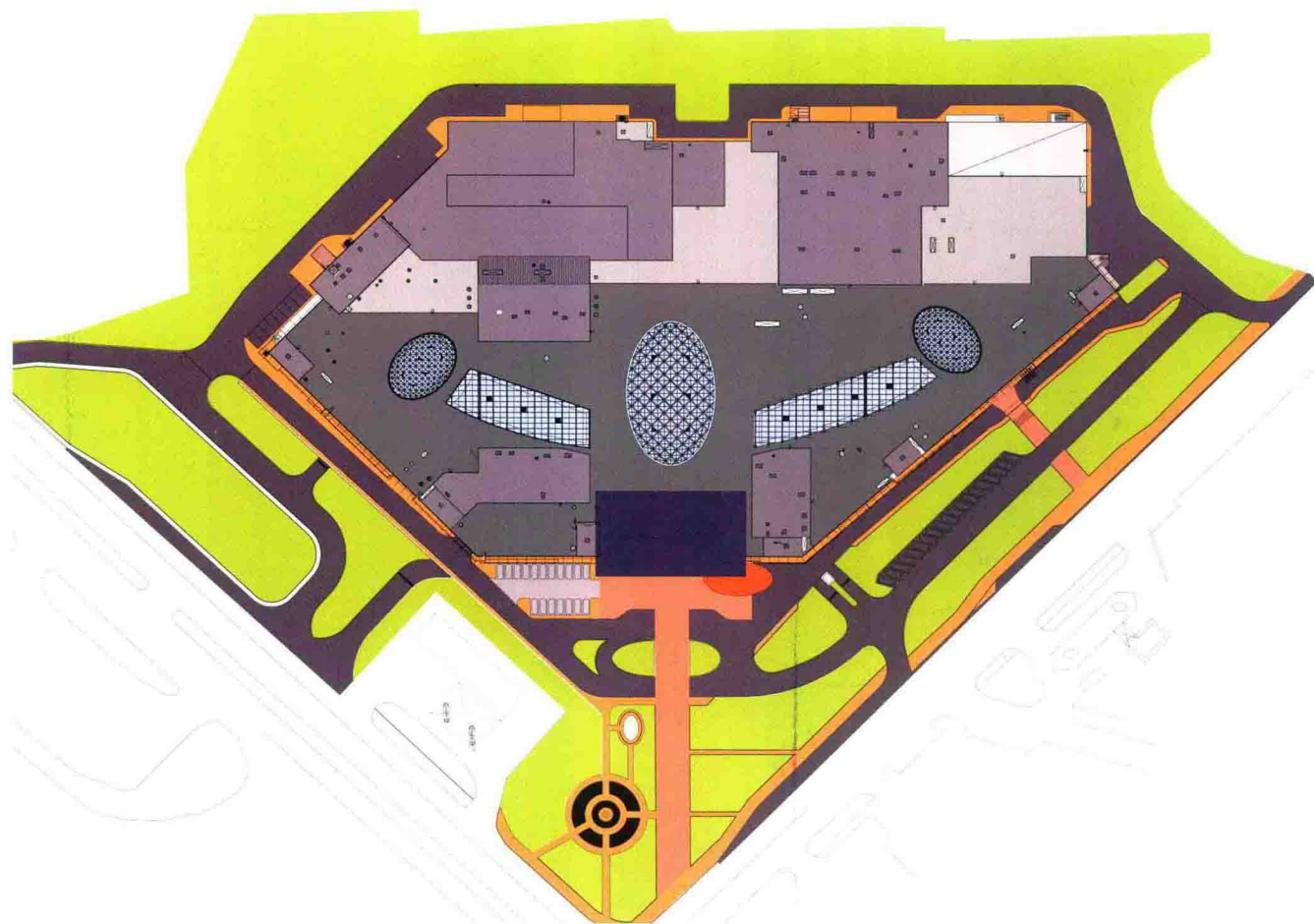
Aura is a 170,000 m² shopping and entertainment center, which is located in Novosibirsk, Russia. The four-storey building has 170 shops with large scaled shopping and entertainment units, such as, a hypermarket, a technology shop, an entertainment center and a cinema, making it the largest shopping center of the city. The building façade was made of enamel painted glass, pattern-imprinted metal panels and light boxes. The glass elements, which are printed with different tones of orange in color, are placed to the façade in angular directions, enhancing the three dimensional characteristic of the façade. Metal panels are imprinted with a particular orange colored flower pattern. The interior columns are covered with the same orange colored flower shaped pattern as of the exterior façade, and helps in developing a connection of the interior design with the exterior architecture. The glass façade and advertisement boxes are lit with LED material, making the building a light sculpture at night.

The building has three main atriums and two secondary atriums that get daylight from five skylights at the top. The skylights are made up of steel elements. The steel sections of three semi sphere shaped skylights, which cover main atriums, are particularly designed according to the shapes of spans, rather than being selected among standardized ones.

Each atrium was decorated by using elements that are designed exclusively for that area. The central atrium, named as "the city sky court", is located in front of the entrance foyer. The colors of the sky, which are dark blue, golden and yellowish brown, dominate the space. A glass elevator meets the visitor entering the city sky court. Its skeleton is made up of golden painted steel box sections. Timber decorative elements are hung down the atrium from the skylight. The floor is covered with dark blue, white and brownish yellow terrazzo tiles, specially-cut considering a pattern specific to the area.

The second atrium, which is called "the water court", is embellished with greenish turquoise, light brown and cream colored elements. Green represents water, while cream and light brown represents sand. A sixteen-meter-high fountain and an elevator meet the visitor when he/she enters the atrium. The fountain is made up of sandblasted glass which is naturally green in color due to its treatment. It is covered with light brown colored metal sheet. The floor is covered with brown, green and white terrazzo tiles, specially-cut like the city sky court.

The third atrium, named as the "crystal court", is defined by crystal shaped elements that are hung to the steels of the skylight. Icy blue and light grey elements, representing crystal colors, dominate the space. The floor is covered with white, grey and icy blue terrazzo tiles, specially-cut like the city sky and water courts.



总平面图



一层平面图

Timber lodges overlook the secondary atriums at the fourth floor. They are the most significant elements of the food court, which is decorated by transparent orange and green colored furniture. The lodges are covered by strips of timber, like the other architectural elements, such as, columns and separator panels. Large timber pots landscaped with sansevieria and zammia plants also help in the separation of particular spaces in the food court, like the panels. The ceilings are covered with decorative wooden elements of diverse brown colors, developing a connection with the other wooden elements of city sky court.

该项目是一个建筑面积达 17 万 m² 的购物娱乐中心，坐落在俄罗斯新西伯利亚。四层楼共有 170 家店面，其中包括一家超市、一个工艺店、一个娱乐厅，以及一个电影院，它是俄罗斯新西伯利亚最大的购物中心。楼体由瓷釉彩绘玻璃、印花金属板和灯箱构成。玻璃中印有深浅不一的橙色，将其运用于不同的方向，使楼面更具立体感。金

属板上印有一个独特的橙色花形图案。室内柱表面覆盖有相同的橙色花形图案，使内部设计与外部结构相协调。玻璃墙体和广告标识在 LED 灯的作用下，使该建筑成为晚间的一处靓丽风景。

大楼有三个大厅和两个中厅，透过顶部的五个天窗来采光。天窗是钢制结构，三个大厅顶部的三个半球形的钢制天窗，是根据其实际跨度而设计制造的，不是流水线式的标准化产品。

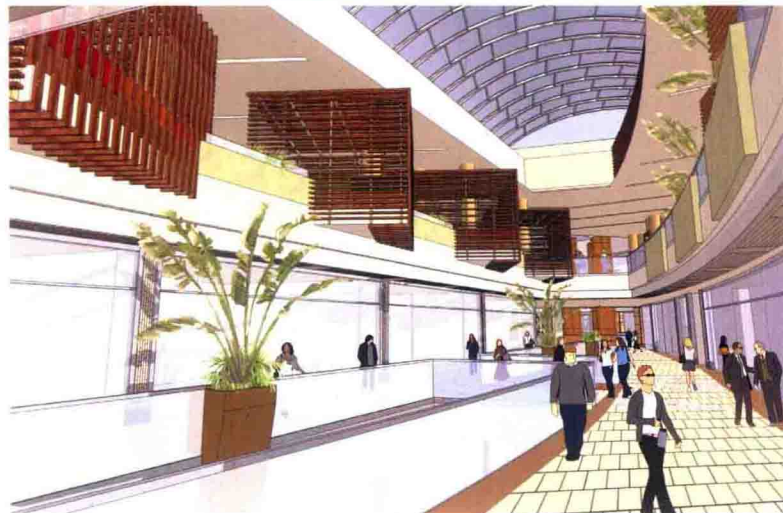
每个大厅区域内的装饰都是专门设计的。中央的大厅命名为“天空之城”，位于入口的门厅处。厅内以天空的颜色为主色调，即深蓝色、金色和淡褐色。厅角的玻璃电梯把游客带入厅内。其主架结构为镀金彩绘钢截面。木材装饰从厅的天窗徐徐垂下。地板上铺着深蓝色、白色和棕黄色水磨石砖，每块地砖都是根据大厅的设计而精心切割的。

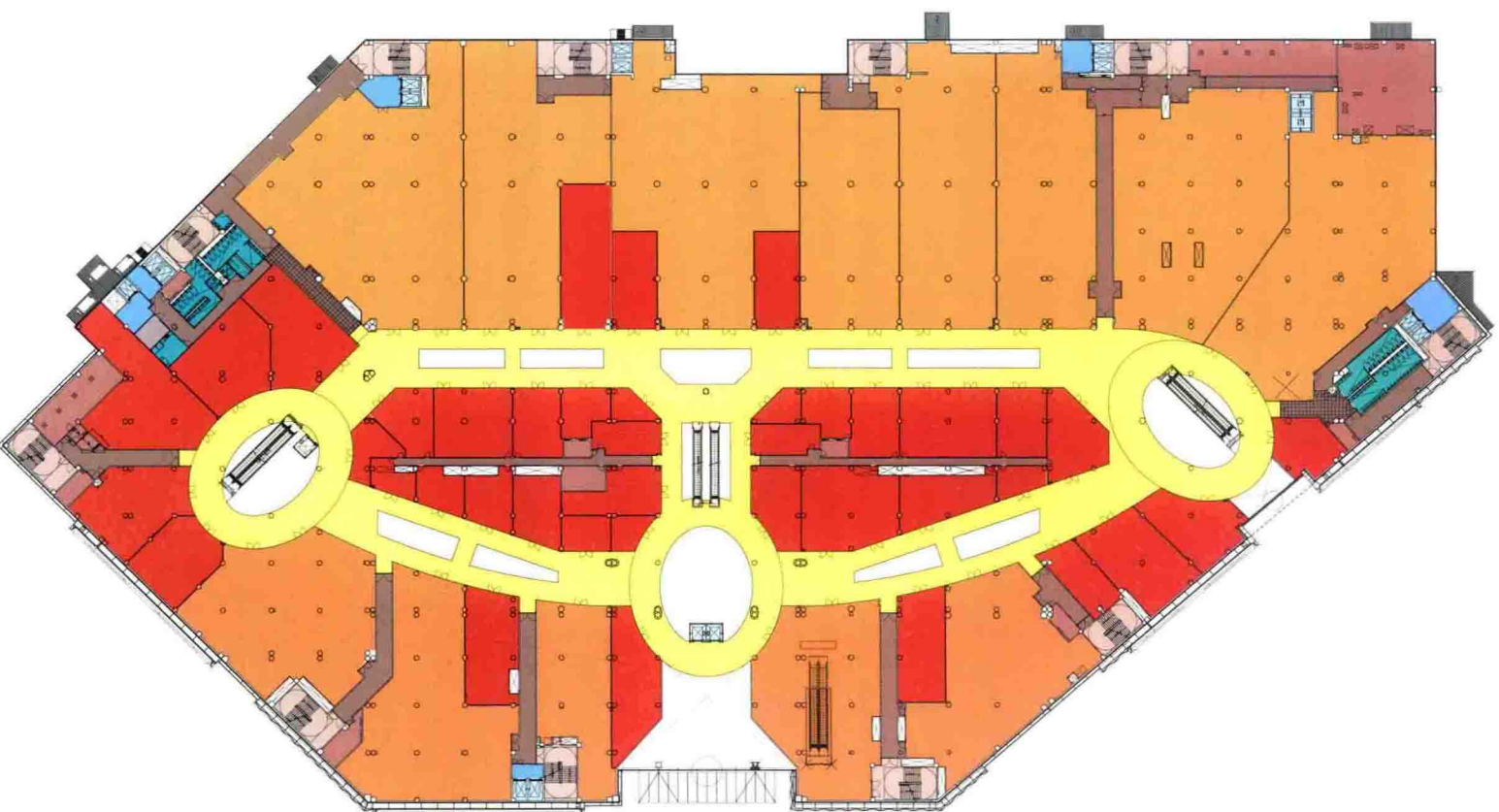
第二个大厅命名为“水厅”，以绿松石色、浅褐色和奶油色为主色调。绿色寓意水，而奶油色和

淡褐色代表沙子。随电梯进入该厅便能看到一个 16 m 高的喷泉。喷泉为磨砂玻璃结构，经过喷出来的水的冲刷而呈现出其天然的颜色。磨砂玻璃上嵌着淡褐色的金属片。地面上铺着棕色、绿色和白色水磨石砖，每块地砖同样是根据该大厅的设计而精心切割的。

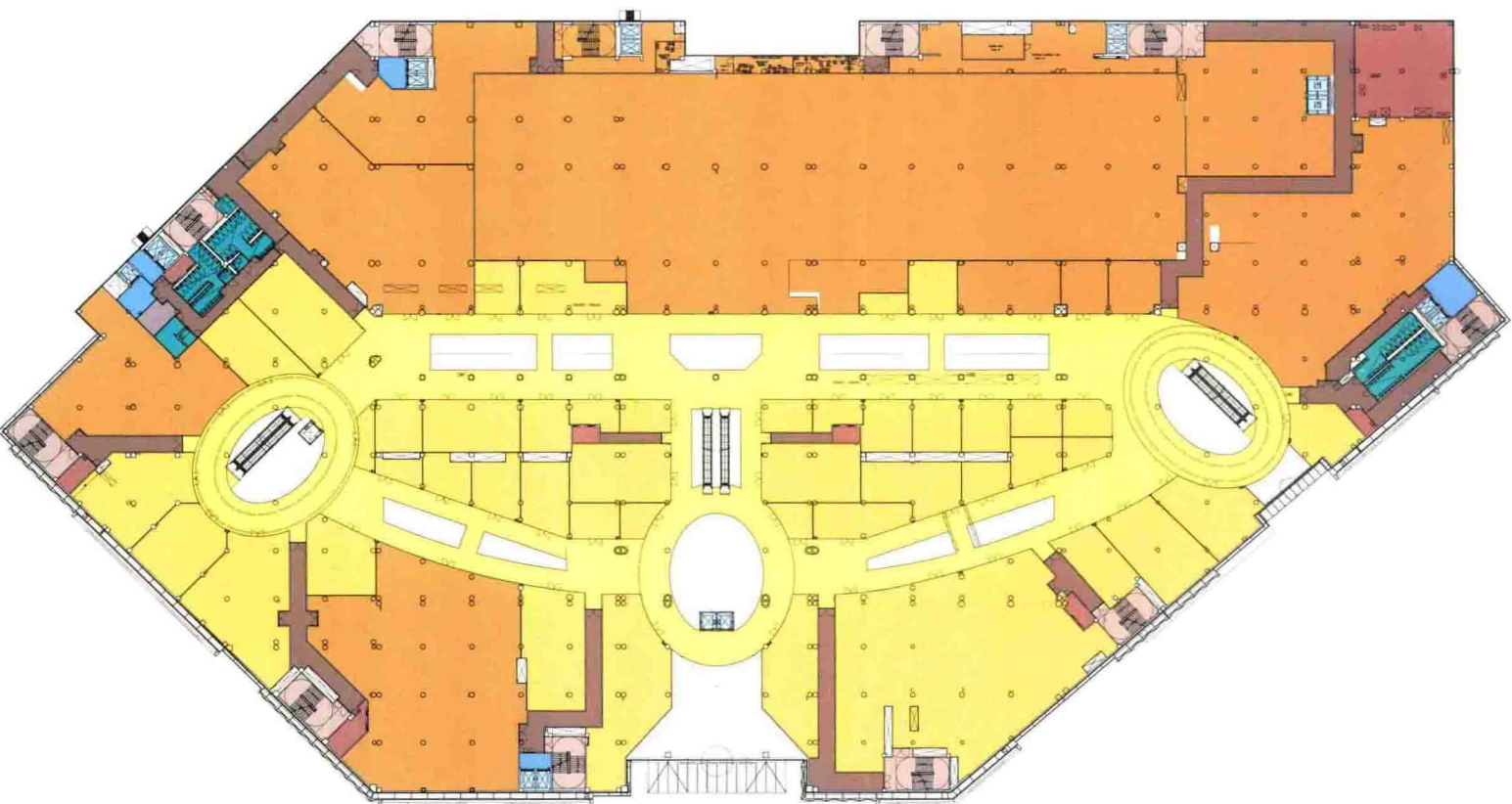
第三个大厅命名为“水晶阁”，水晶形图案延伸到钢制天窗。冰蓝色和浅灰色的元素，代表着水晶的颜色。地面上铺着白色、灰色和冰蓝色水磨石砖，每块地砖同样是根据该大厅的设计而精心切割的。

位于四楼的两个中厅中，有许多木制小屋。它们是这两个美食厅中的主物件，与透明橙色和绿色的家具相搭配。小屋与柱子和隔板一样都覆盖有木条。栽种着虎尾兰等的大木花盆与隔板一起来界定美食厅内的空间。美食厅天花板上深浅不一的棕色木制装饰，与主厅“天空之城”的木制装饰相呼应。

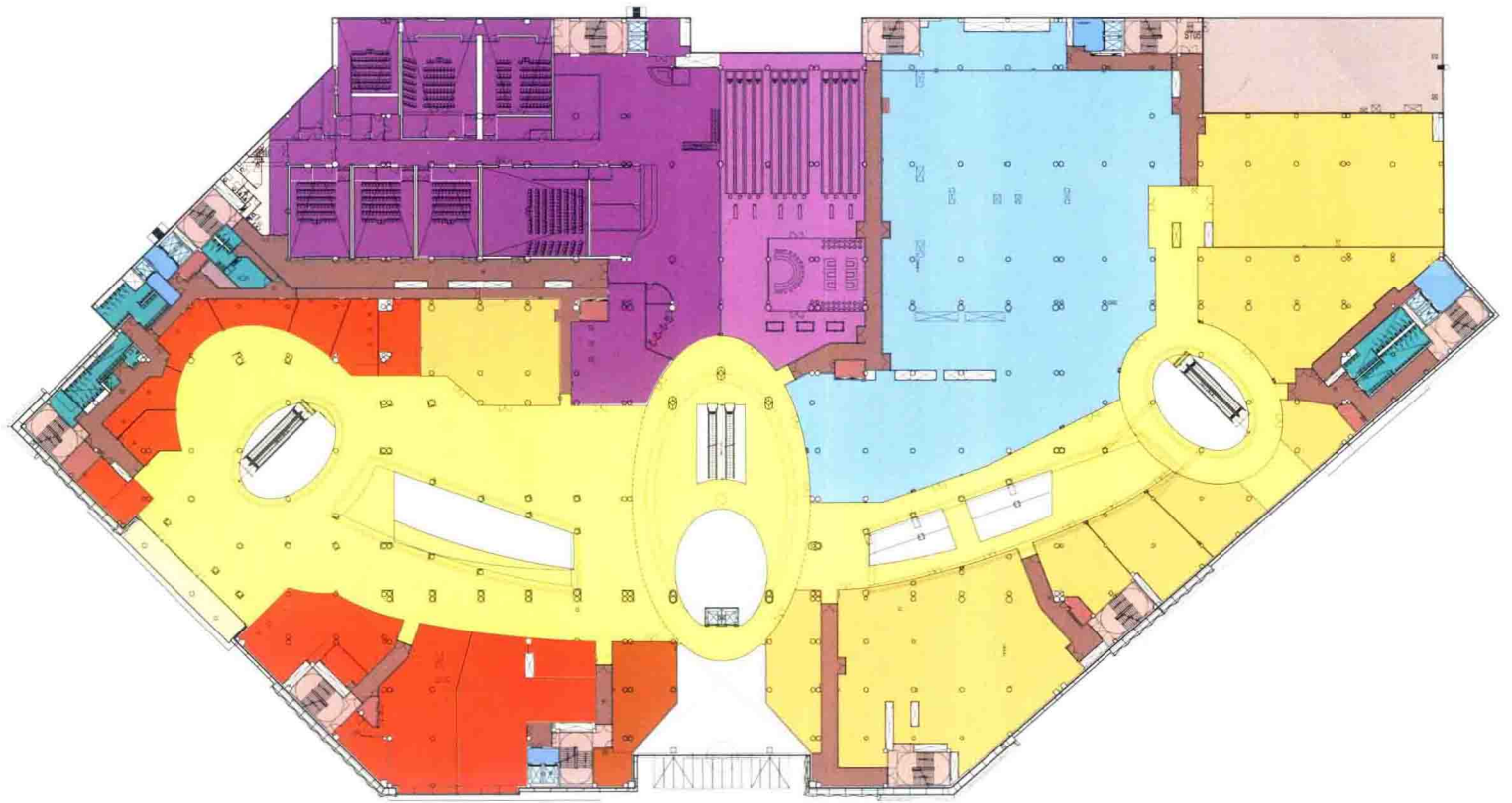




二层平面图

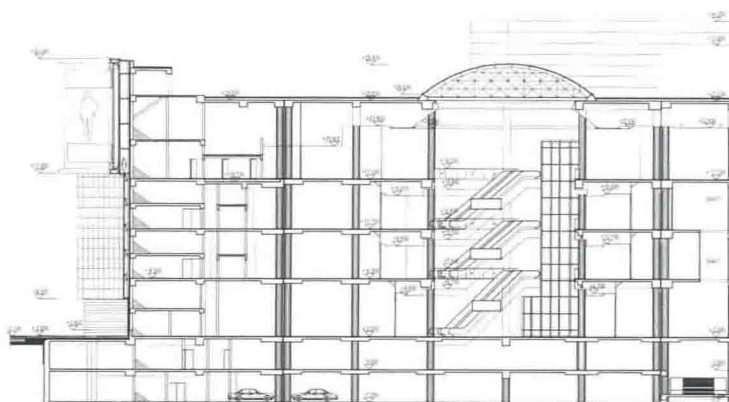
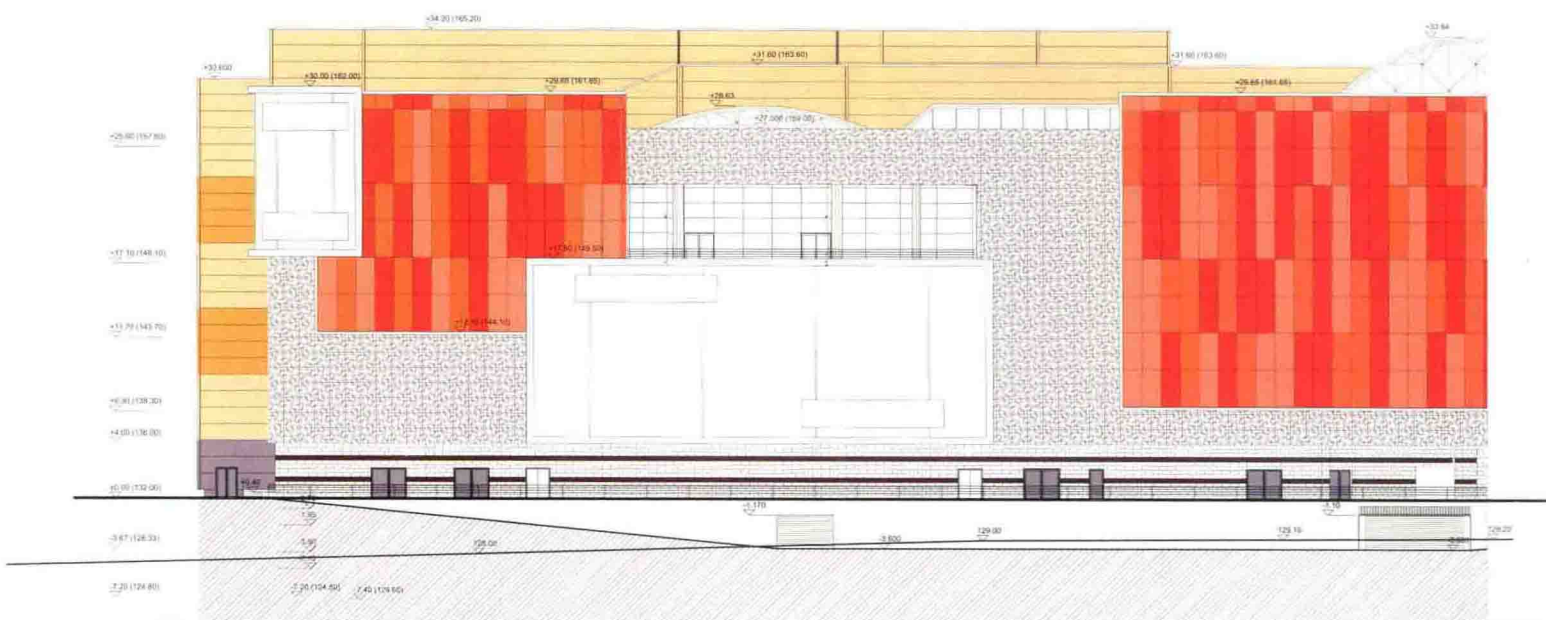
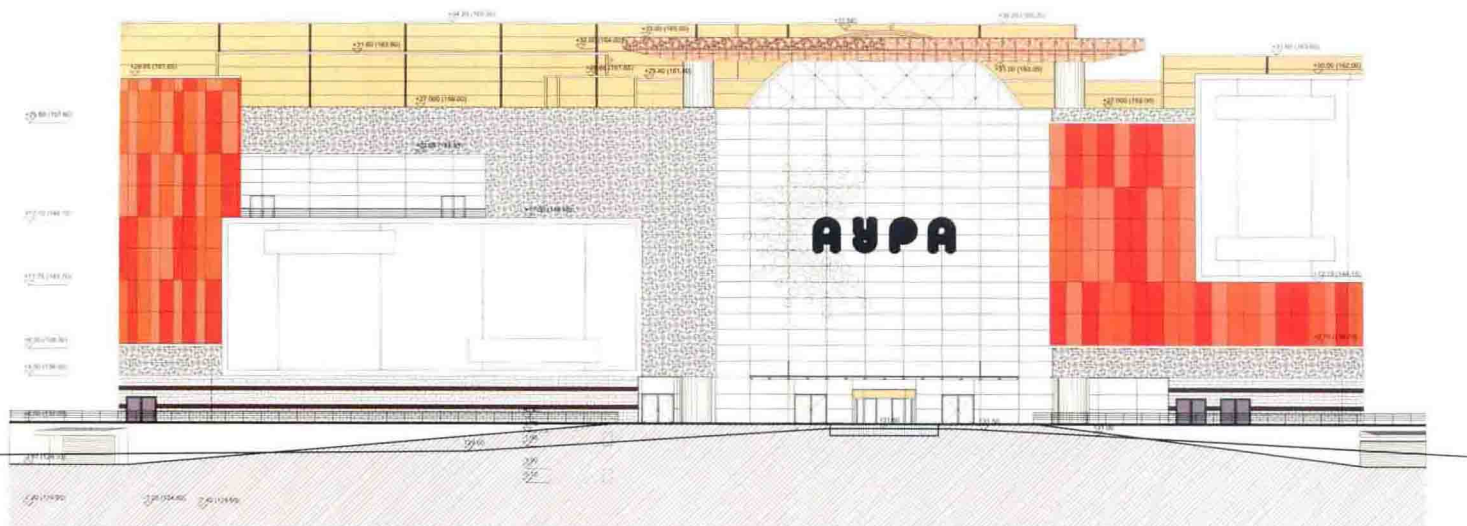


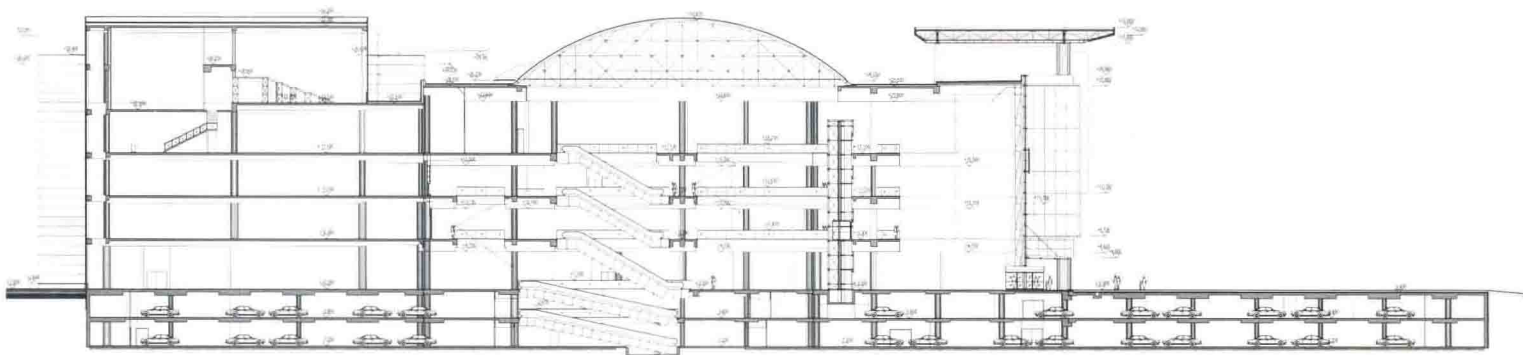
三层平面图



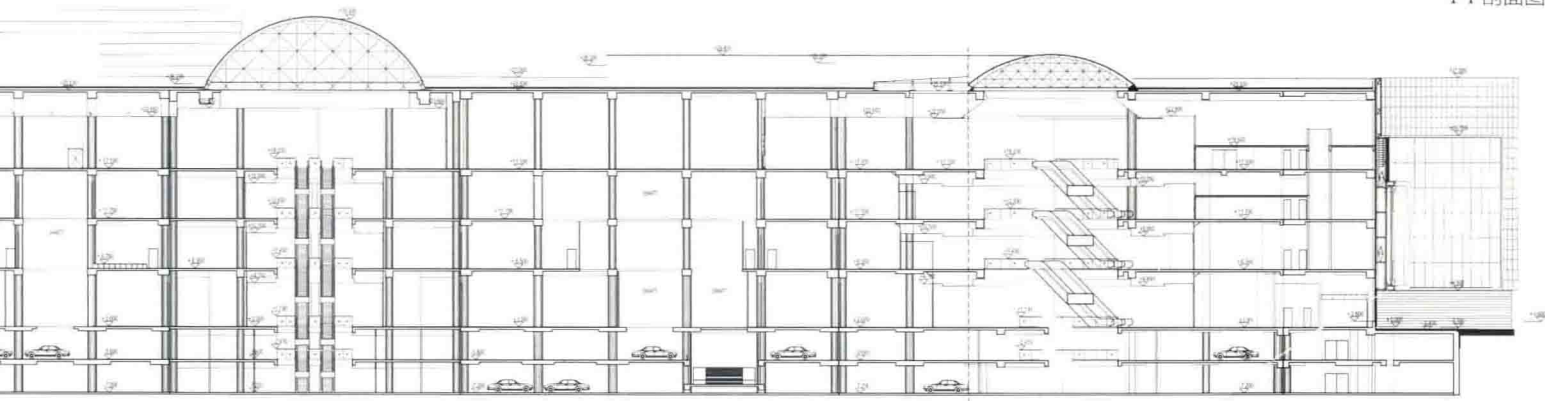
四层平面图







1-1 剖面图



2-2 剖面图

