

中国蜜源植物花粉图谱

The Atlas on Pollen of
Honey Plant in China

孙桂英 编著

天津科技翻译出版公司

内容简介

本书介绍了我国 25 个省市的 41 个地区播种面积大和分布广的野生植物,包括 30 个科的 62 属中的 90 个种和品种。经过了精心选择和鉴定,每个样品的学名均准确可靠。用奥林派斯(OLYMPUS)BH-2 型光学显微镜分别拍摄了未分解和分解的两种花粉粒的(未经或经过乙酸酐硫酸处理过的)赤道面、极面、纹饰、沟、孔和轮廓等形态特征的照片 390 张。一般放大 1080 倍,少量较大花粉放大 540 倍。应用图谱鉴定蜂蜜中花粉,具有快速准确,不需复杂仪器,便于推广和应用范围广泛的特点和优点,为蜂蜜加工和质量把关检验提供了更科学的依据,并能提高单一花种蜜的产量和纯度,从而增加经济效益和社会效益。

Introduction

This Atlas consists of wild plants of ninety species and varieties falling into 62 genuses and 30 families which are widely planted and dispersed over 41 areas of 25 provinces and cities in China. They are very carefully chosen and identified, each scientific name being accurate and reliable

390 photos were taken by OLYMPUS BH-2 optic microscope of non-resolved and resolved (i. e. treated or not treated by aceticoxide sulphuric acid) pollens respectively, These photos, most of which were enlarged by 1080 times (those of some larger pollens were enlarged by 540 times), demonstrates such characteristic patterns as equatorial plane, polar plane, figur, gap hole and outline etc.

Applying this Atlas to identify pollens in honey is proved to be quicker, more accurate, and widely applicable, and nocomplicated apparatus are involved, providing scientific basis for honey processing and its quality control. The method raises yield and purity of honey obtained from flowers of only one variety, and thus increases economic benefit and social benefit.



图 1



图 2

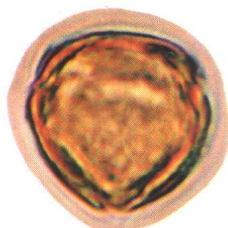


图 3



图 4

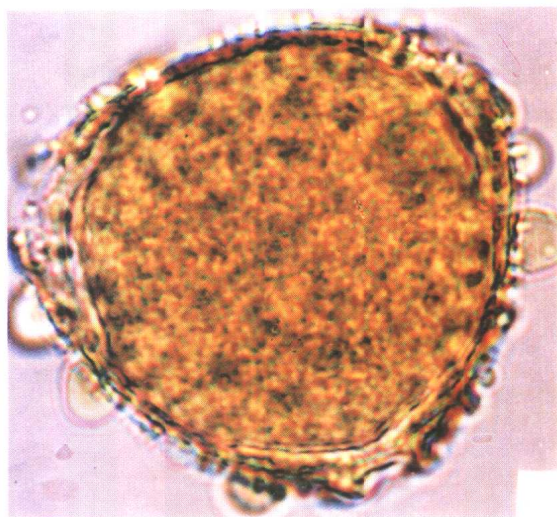


图 5

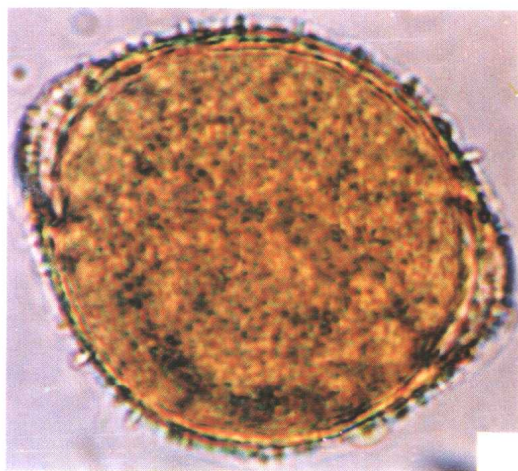


图 6

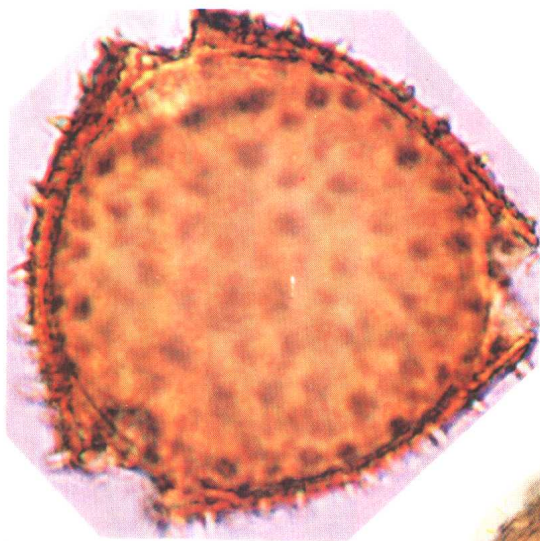


图 7



图 9

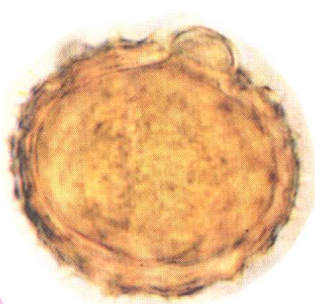


图 10



图 8



图 11

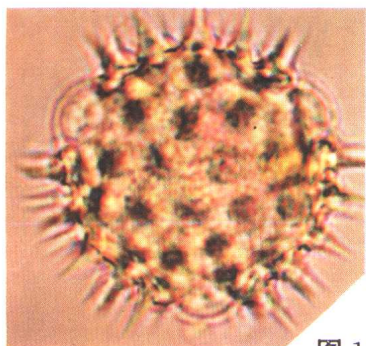


图 12

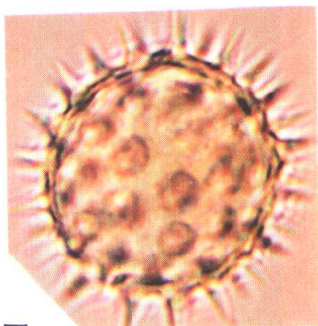


图 13

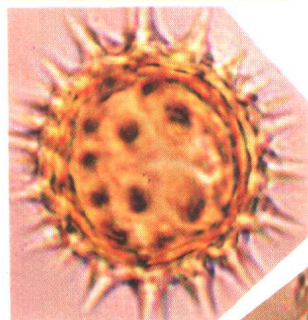


图 14

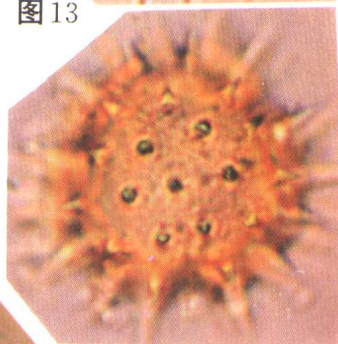


图 15

图 18

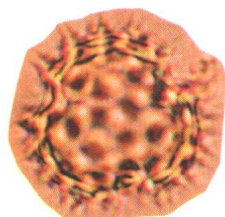


图 16

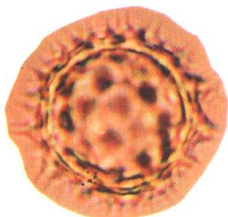


图 17

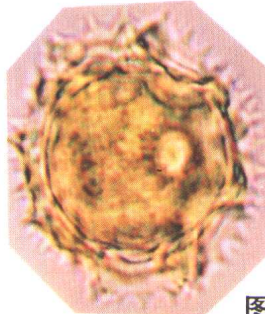


图 19



图 20



图 21



图 22

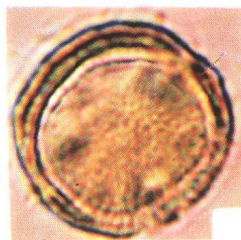


图 23



图 24

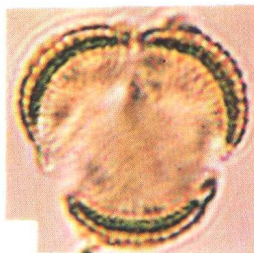


图 25



图 26



图 27

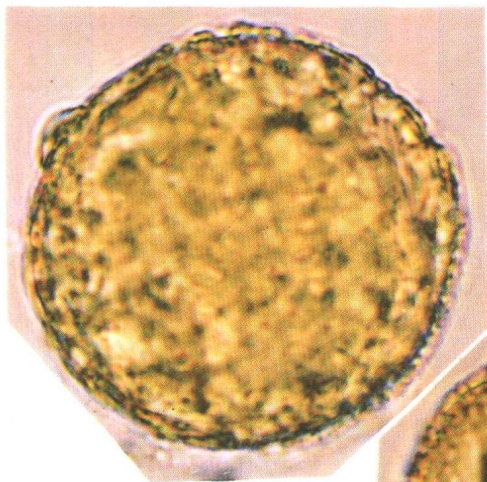


图 28



图 30



图 29



图 31

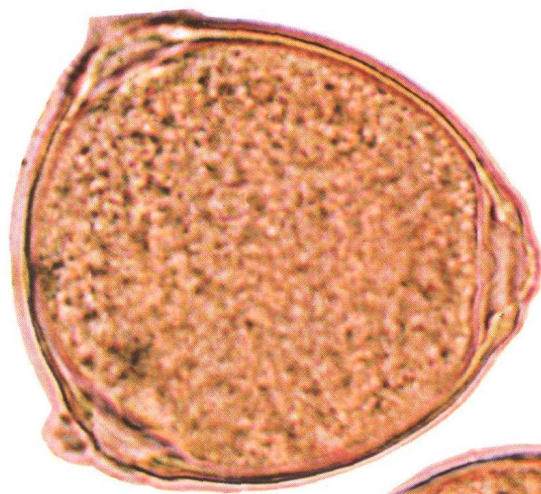


图 32

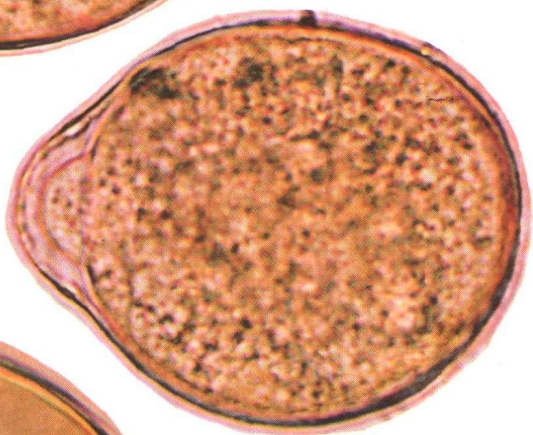


图 33



图 34



图 35



图 36

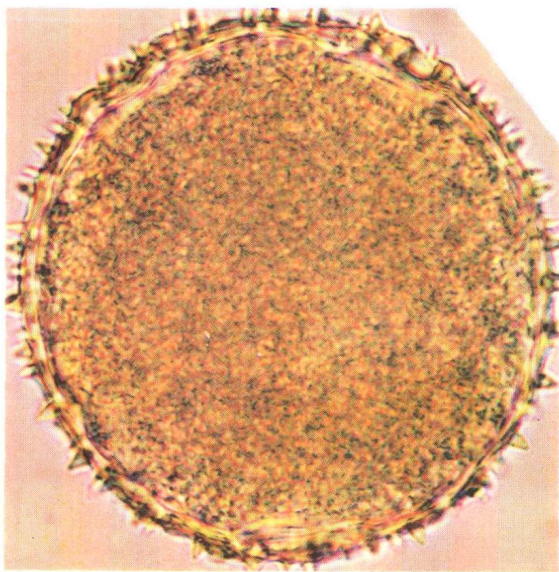


图 37

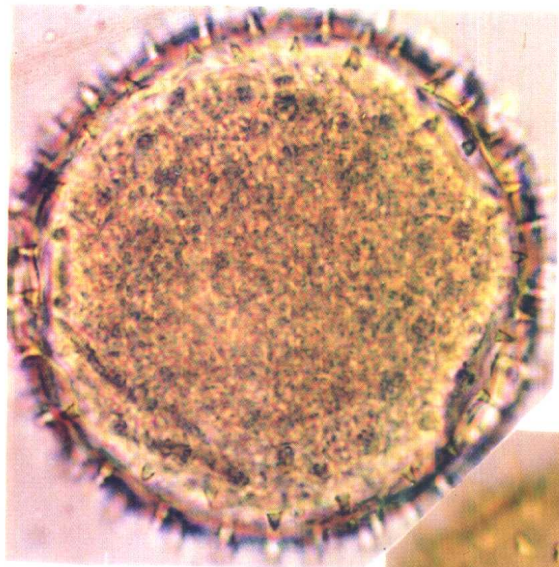


图 38

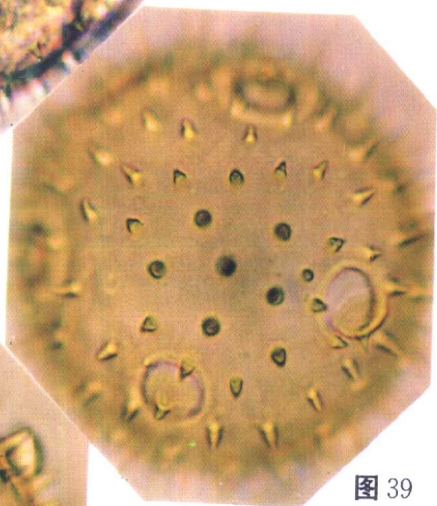


图 39



图 40

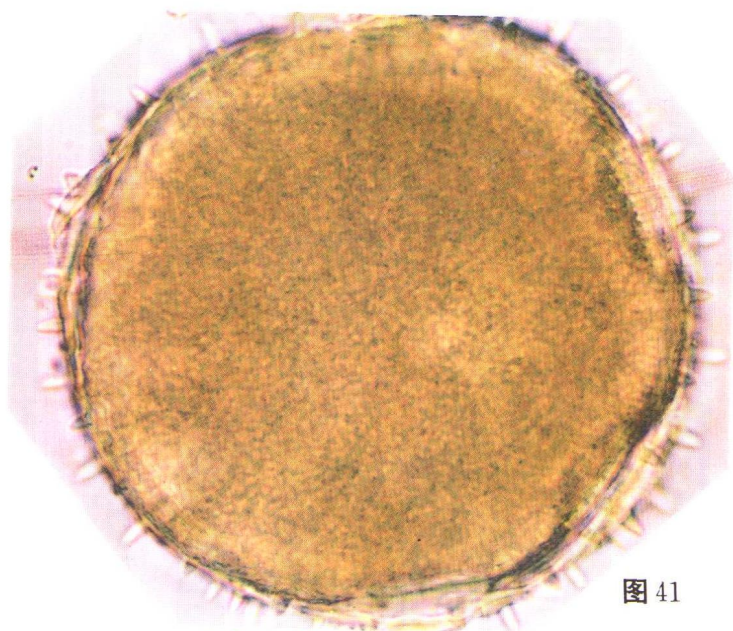


图 41

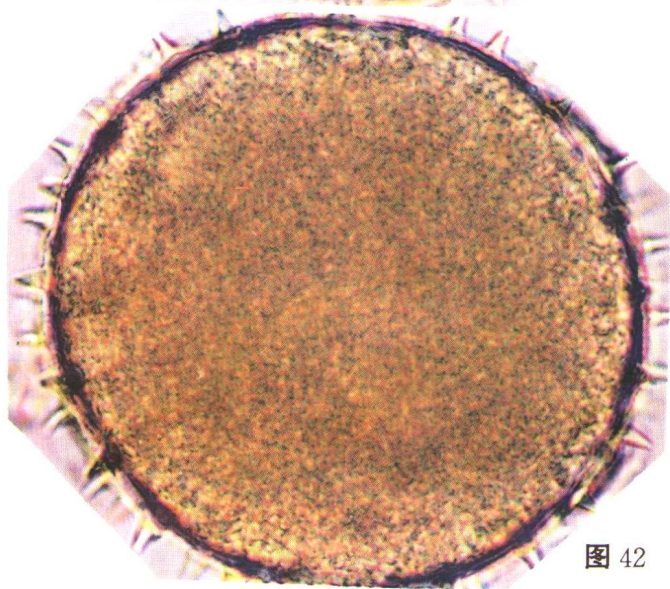


图 42

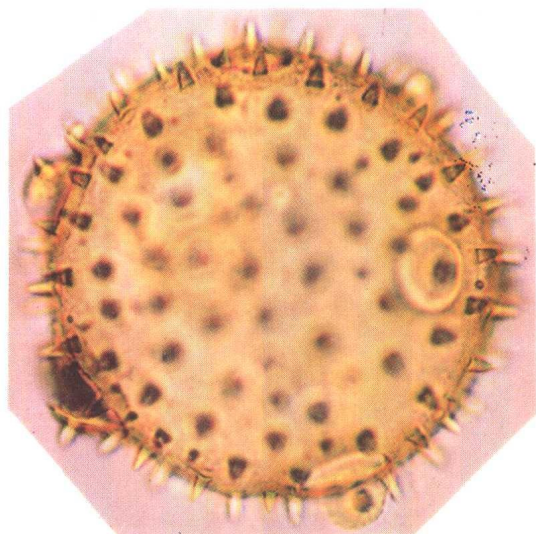


图 43

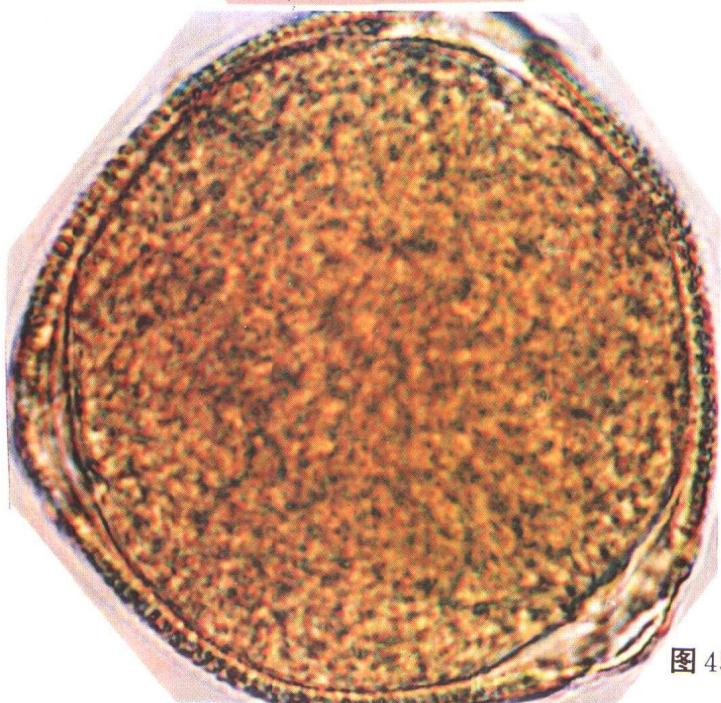


图 45

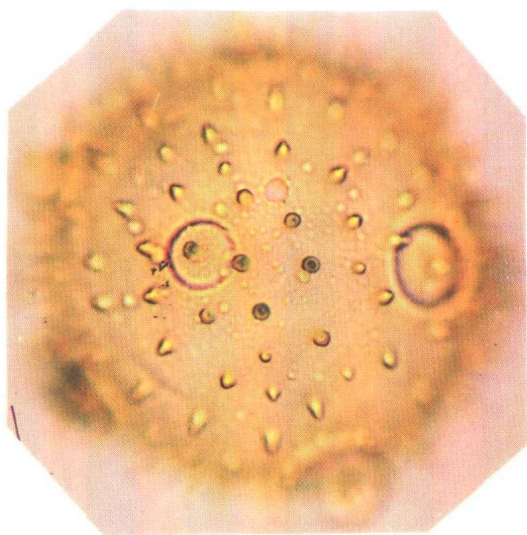


图 44

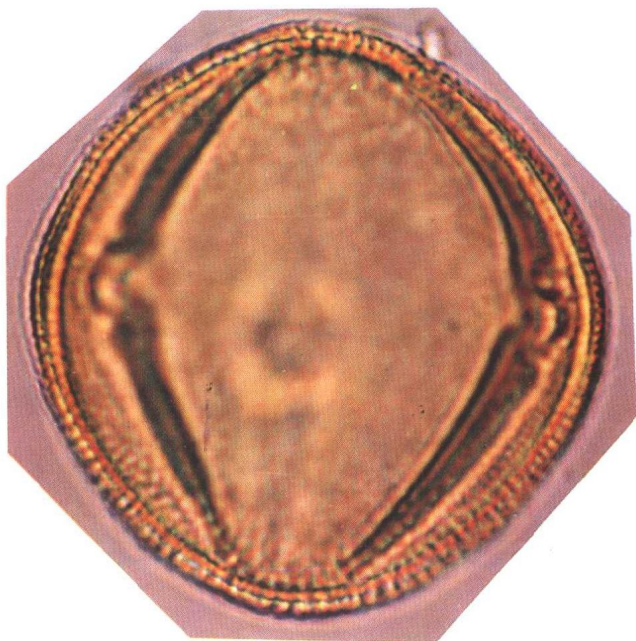


图 46



图 47



图 48

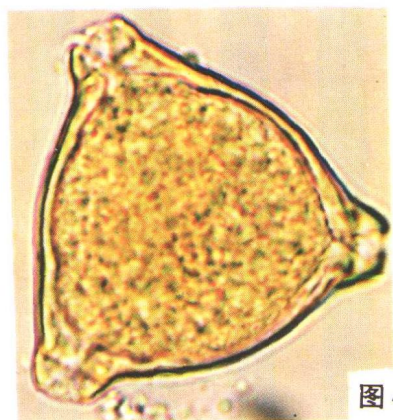


图 49

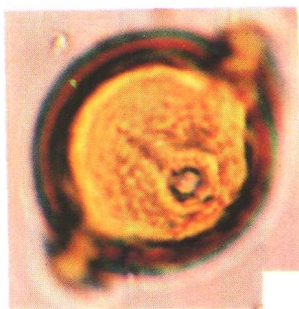


图 52

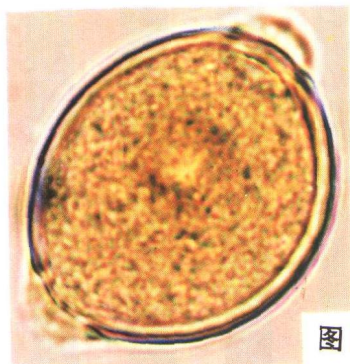


图 50



图 53



图 51

图 54





图 55



图 56

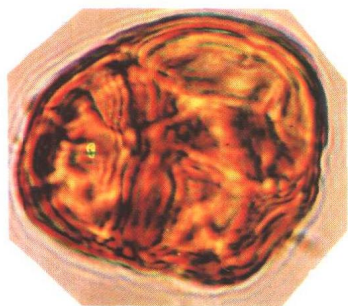


图 57

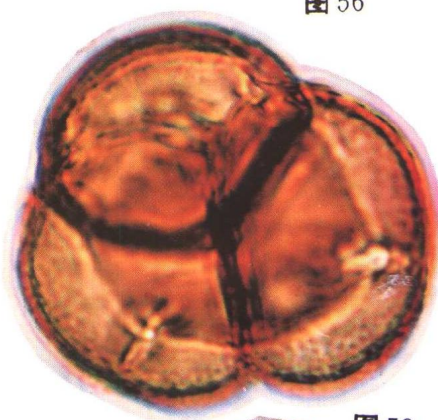


图 58

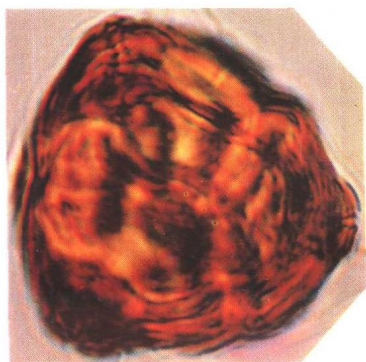


图 59



图 60



图 61

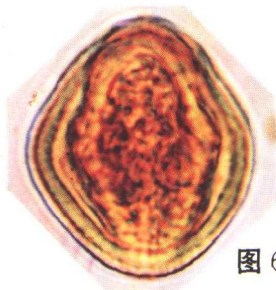


图 62



图 63

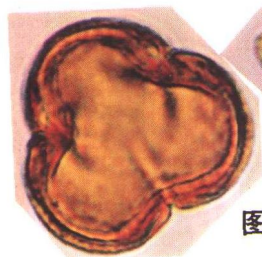


图 64

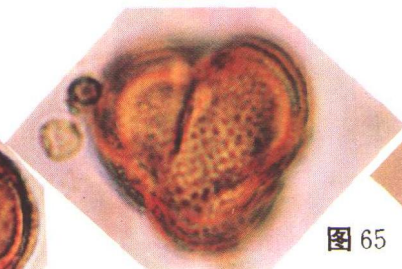


图 65



图 66



图 67



图 68



图 69

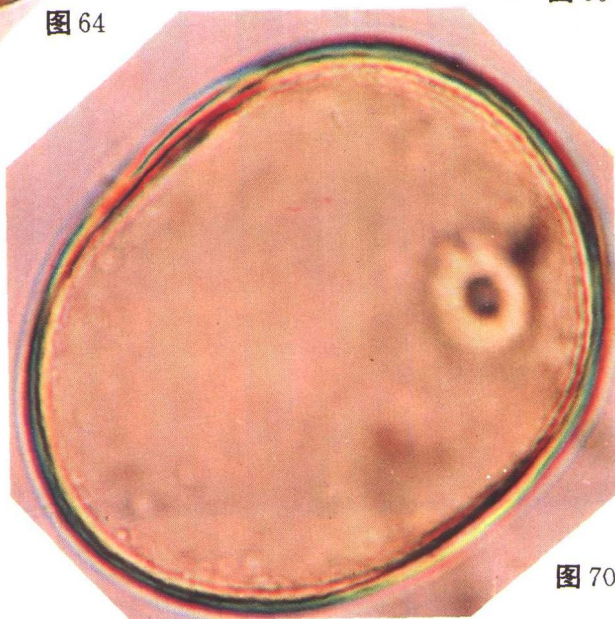


图 70