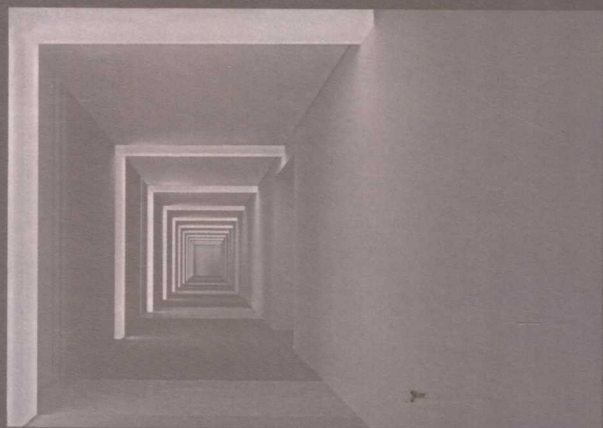


中国建筑设计研究院室内设计作品选

2002 SELECTED INTERIOR WORKS OF CHINA ARCHITECTURE DESIGN & RESEARCH GROUP



清华大学出版社
TSINGHUA UNIVERSITY PRESS

主 审: 崔 恺
策 划: 赵国宇
顾 问: 刘洵蕃
主 编: 孟建国 张广源
副主 编: 康 军
编 委: 王侠宗 黄德龄 饶良修 奚聘白

文 案: 张 磊 尤 琳
美 编: 田歆颖 康 军 尤 琳 张 磊
摄 影: 张广源 黄旭彤 张 晔 赵 虹
英文审定: 吴焕加 杭 菊

责任编辑: 徐晓飞

书 名: 中国建筑设计研究院室内设计作品选
出版者: 清华大学出版社 (北京清华大学学研大厦 邮编 100084)
<http://www.tup.tsinghua.edu.cn>
印刷者: 北京雅昌彩色印刷有限公司
发行者: 新华书店总店北京发行所
开 本: 635 × 965 1/8 印张: 22 插页: 1
版 次: 2002 年 10 月第 1 版 2002 年 10 月第 1 次印刷
书 号: ISBN 7-302-05981-0/TU · 170
印 数: 0001~4500
定 价: 120.00 元

中国建筑设计研究院室内设计作品选

2002 SELECTED INTERIOR WORKS OF CHINA ARCHITECTURE DESIGN & RESEARCH GROUP

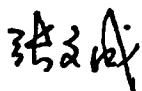
中国建筑设计研究院成立于1952年，建院50年来，为国家完成了众多重要建设项目的设计，取得了辉煌的成就。

我院室内设计研究所是国内最早的室内设计专业机构之一，配合建筑设计参与了国内外大量工程的室内设计工作，在实践中发展壮大，积累了丰富的经验，取得了令人瞩目的成绩。特别是改革开放以来，解放思想、开拓进取、锐意改革，建立了设计与施工相结合的新体制，以设计为龙头、以施工为依托、以质量为保证，与建筑师一道创作了一大批独具风格的优秀建筑，获得了良好的社会信誉和诸多荣誉，在建筑装饰业树立了一面旗帜。

五十年岁月，五十年历程，五十年耕耘硕果。

我们将一些优秀的设计作品汇集成册，以此献给中国建筑设计研究院建院50周年，献给那些辛勤工作、精心创作的设计师们，献给一直关爱着建筑装饰业的朋友们。

中国建筑设计研究院 院长：



2002年9月28日

China Architecture Design & Research Group (CAG) was established in 1952. Over its history of 50 years, CAG has accomplished design tasks for many important national construction projects, scoring remarkable achievements.

The Institute of Interior Design & Research under CAG is one of the earliest institutions specialized in interior design. In support of architectural design, the institute has undertaken interior design for a large number of projects, hence growing through practice, enriching itself through experience and building up its success stories. Especially since China started the reform and opening drive, the institute has greatly opened up its horizon and implemented progressive reform programs. Such efforts gave birth to a new system of integrated design and construction, under which design becomes the focus, backed up by construction and guaranteed with high quality. The institute, together with architects, has created a host of excellent buildings with unique characters, winning favorable social credit and honors, and firmly establishing itself as a flagship in the industry of architectural decoration.

The 50 extraordinary years witness the great endeavors and tremendous achievements.

We have collected representative works in this book to commemorate the 50th anniversary of CAG and to dedicate them to the hardworking and creative designers and to all friends who have been supporting the architectural decoration industry.

President of China Architecture Design & Research Group, Zhang Wencheng

September 28, 2002

目录

6	厚积薄发，再展宏图
11	项目
12	曲阜阙里宾舍
16	北京图书馆
17	深圳发展中心
18	北京国际饭店
20	西安阿房宫凯悦酒店
22	深圳南海酒店
24	北京梅地亚中心
26	张家港会议中心
28	外交部怀柔培训中心
30	外交部办公楼
34	全国政协办公楼
40	文化部办公楼
41	国家林业总局办公楼
42	威海中信金融大厦
44	外语教学与研究出版社
48	外研社印刷厂改造
52	北京外国语大学讲堂改造
54	北京大学100周年纪念讲堂
60	北京大学理科楼群
62	北大之路厦门生物园
66	南开大学泰达学院
70	天津泰达小学
72	中国邮政总局办公楼
74	北京远洋大厦 (F11、F12)
78	中国移动通信集团公司总部
82	中国银河证券公司总部
84	海南省海南广场
88	中国建筑文化中心
90	中国社会科学院学术报告厅
92	北京世界金融中心
96	天津经济开发区孵化大厦
98	泰达开发区房地产交易中心
100	威海外运办公楼
102	北京珠江国际城售楼处和会所
106	北京现代城5号楼
108	北京SOHO现代城公共部分
112	建筑师走廊3号别墅
116	北京倚林佳园
118	北京工体100道保龄球馆
120	唐山新华大厦
124	海口绿岛城宾馆
126	北京安利隆生态旅游山庄
132	北京大学勺园公寓
136	北京富凯大厦
140	山东出版总社编辑业务楼
144	西藏自治区政协礼堂
146	中央人民政府驻香港联络办公室办公楼
148	北京兴涛会馆
150	北京师范大学国际交流中心(方案)
154	东方电子烟台工业园二期(方案)
156	东方电子北京京海科研楼(方案)
158	中国民航总局办公楼改造
162	北京中关村科贸大厦
166	北京万寿路干部活动中心(方案)
168	中国城市规划设计研究院新办公楼
170	天津理工学院报告厅
172	北京大兴文图馆
174	北京雅昌彩印中心

CONTENTS

Rich Legacy, Grand Prospects	6
Works	11
Queli Guest house, Qufu	12
National Library of China	16
Shenzhen Development Center	17
Beijing International Hotel	18
Hayyat Hotel E' fang Palace	20
South Sea Hotel, Shenzhen	22
Beijing Media Center	24
Zhangjiagang Conference Center	26
Huairou Training Center of MFA	28
Office Building of Ministry of Foreign Affairs of P.R.C	30
Office Building of CPPCC	34
Office Building of the Ministry of Culture of P.R.C	40
Office Building of State Forestry Bureau of China	41
Weihai CITIC Financial Building	42
Foreign Language Teaching & Research Press	44
Restoration of FLTRP Printery	48
Restoration of the Lecture Hall of Beijing Foreign Studies University	52
Centennial Anniversary Memorial Hall of Peking University	54
Science Building Complex of Peking University	60
Xiamen Biology Garden	62
TEDA Institute of Nankai University	66
TEDA Primary School, Tianjin	70
Office Building of State Postal Bureau of China	72
Headquarters of COSCO (F11, F12)	74
Headquarters of CMCC	78
Headquarters of China Galaxy Securities Co., Ltd.	82
Hainan Square, Haikou	84
China Architectural Culture Center	88
Auditorium of the Chinese Academy of Social Science	90
World Finance Center, Beijing	92
Incubator Building in TEDA	96
Real Estate Trade Center of TEDA	98
Office Building of Sinotrans Weihai Company	100
Sell Office & Club of Zhujiang International City, Beijing	102
Building No.5 in Modern Town, Beijing	106
Public Part of SOHO Modern Town, Beijing	108
No.3, Villa, Architect Corridor	112
Yilin Fine Garden, Beijing	116
100-Alley Bowling Stadium in Beijing Workers' Stadium	118
Xinhua Mansion, Tangshan	120
Haikou Green Island City Hotel	124
Anlilong Ecological Tourist Mountain Villa, Beijing	126
Shaoyuan Apartment, Peking University	132
Fukai Building, Beijing	136
Building of Shandong Publication Group	140
Auditorium of Tibetan PPCC, Lhasa	144
Office Building of Hong Kong Liaison Office of Central People's Government	146
Xingtao Assembly Hall, Beijing	148
International Exchange Center of Beijing Normal University(project)	150
Yantai Industrial Park of Oriental Electronics, phase 2 (project)	154
Jinghai Scientific Research Building of Oriental Electronics, Beijing (project)	156
Restoration of CAAC Office Building, Beijing	158
Zhongguancun Science & Trade Tower, Beijing	162
Cadres' Activity Center, Beijing (project)	166
New Office Building of China Academy of Urban Planning & Design	168
Lecture Hall of Tianjin University of Technology	170
Daxing Art Gallery, Beijing	172
Artron Colour Printing Center, Beijing	174

厚积薄发，再展宏图 Rich Legacy, Grand Prospects

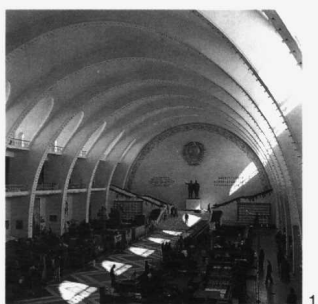
中国建筑设计研究院室内设计研究所是我国成立最早的建筑室内专业设计机构之一，依托中国建筑设计研究院的雄厚实力，始终致力于室内设计的研究与发展，50年来走过了一条不断探索和创新的道路。

1952—1960年没有专门的室内设计专业，室内设计是建筑专业的一部分，是由建筑师来完成。当时戴念慈总建筑师、林乐义总建筑师、曾坚先生等所做的中南海怀仁堂改造设计、紫光阁设计、中南海毛泽东同志书房及卧室设计、毛泽东同志杭州别墅设计等，都包括了室内及家具设计。1953年北京展览馆室内装饰是戴念慈总建筑师和奚小彭先生等配合苏联专家合作设计的。1954年我院设计的北京饭店西楼是国宾馆，室内设计采用了中国传统的藻井彩画图案、沥粉贴金工艺，创造了富丽堂皇、具有中国风格和气派的国宴环境；北京首都剧场、北京电报大楼、北京火车站、中国美术馆和全国农业展览馆的室内设计等，代表了当时我国室内设计的最高水平，开创了新中国室内设计之先河。这些项目对我国建筑装饰设计产生了广泛而深远的影响。

The Institute of Interior Design & Research under China Architecture Design & Research Group (CAG) is one of the earliest organizations in China specializing in interior design. Leveraging on the superior strength of CAG, it has all along been dedicated to the research and development of interior design, and has been following the path of exploration and innovation over the past 50 years.

There was no separate specialty of interior design from 1952 to 1960 when interior design was part of the architecture specialty and was made by architects. At that time, interior and furniture design was included in many important works of chief architects Dai Nianci and Lin Leyi as well as Mr. Zeng Jian. For example, the redesigning for Huairan Hall of Zhongnanhai (headquarters of the government), the design of Ziguang Pavilion of Zhongnanhai, the design of study and bedroom for Chairman Mao at Zhongnanhai and that of Hangzhou Villa for Chairman Mao. The interior design of Beijing Exhibition

1. 北京展览馆
2. 北京饭店
3. 国际饭店



水平，开创了新中国室内设计之先河。这些项目对我国建筑装饰设计产生了广泛而深远的影响。

通过室内设计实践，室内设计的重要性和发展前景日益被人们看重，室内设计在建筑工程中的地位越来越重要。为适应发展的需要，1960年3月我院在全国率先成立了室内设计组，下设家具设计、灯具设计、门窗小五金、卫生设备四个小组。室内设计组从1962年开始承接室内设计工程。这些工程大多是援外项目，如蒙古国家迎宾馆、百货大楼、政府大厦的各种家具都是由室内组专门设计，国内加工制作，总数达一万多件。巴基斯坦综合体育设施、班达拉奈克国际大厦、塞拉利昂政府大厦、几内亚人民宫等的室内装饰设计，博得了受援国的好评。同时，也完成了一些国内标志性工程的设计，如首都机场、虹桥机场的室内设计。室内组还做了大量的理论研究工作，其中根据人体工程学原理提出的坐姿曲线，对家具设计有重要的指导作用；室内组还对明式家具做了大

Center in 1953 was a teamwork among chief architects Dai Nianci, Xi Xiaopeng and experts from former Soviet Union. CAG became the designer of the state guesthouse, west wing of Beijing Hotel in 1954. By introducing traditional Chinese techniques like color drawings and patterns on sunk panel and gelled patterning & gilding, the interior design of the Hotel delivered a magnificent environment for state banquet with Chinese styles. Beijing Capital Theatre, Telegraph Office, Beijing Railway Station, China Art Gallery and China Agricultural Exhibition Hall all represented the peak of interior design at home of that age and the inception of interior design in China. These projects have exerted far-reaching and profound influence on China's architectural decoration and design.

Through much practice, interior design is playing a more and more important role in architectural construction and its importance and prospects are gaining increasing attention. To meet the need of

development, CAG took the leading in setting up an Interior Design Team in March 1960, under which there were four sub-teams, namely, furniture design, design of lighting fixtures, hardware for doors and windows, and sanitary installation. The Interior Design Team started to undertake projects from 1962, most of which were for foreign aid. For instance, the furniture for State Guesthouse, Department Store and Government Building of Mongolia were designed by the team and manufactured at home, totaling over 10,000 pieces. The interior designs for Pakistan comprehensive sports facilities, Bandaranaike International Building, Government Office Building of Sierra Leone, Guinea People's Palace were highly rated by the aided countries. The interior design for the Capital Airport and Hongqiao Airport became the paradigm for airport design throughout China. In addition, the team also carried out considerable research. The curve of sitting posture proposed by the team on the basis of ergonomics served as important guidance for furniture design; extensive study on Ming-style fur-

量的研究, 绘制了平面、立面、剖面、透视图, 为我国家具继承传统提供了坚实的理论基础和宝贵的资料。十几年来设计实践和经验, 为我院室内设计的发展, 打下了坚实的基础。

改革开放推动国民经济高速发展, 对外开放、开阔眼界, 人们对建筑的功能、舒适性、室内美学等方面的要求不断提高, 特别是房地产业的兴起, 促进室内设计迅速发展, 室内设计作为一个独立行业应运而生。1986年3月在设计组的基础上, 建立了室内设计研究所。它致力于继承与发展中国优秀传统, 并与现代设计理论相结合, 学习和引进国外的先进理念与技术, 努力创造新时代的室内设计精品。这一时期设计的山东曲阜阙里宾舍就是一个成功的范例。宾舍建筑在形体、用材、色彩等方面与相邻的孔府、孔庙的环境、空间、风格上融合协调, 环境设计与室内设计和谐统一, 儒家文化浸润于现代化宾舍的里里外外, 创造了一种清静、朴素、简约、高



1. 首都剧场
2. 北京站
3. 曲阜阙里宾舍

niture produced plan view, elevation view, sectional drawing and perspective drawing, leaving solid theoretical foundation and valuable documentation for carrying on China's traditional furniture culture. The practice and experience of a dozen years strongly supported the development of interior design operations.

Along with the rapid national economic development driven by the reform and opening program, and especially the rising real estate industry, people widened their horizon and became increasingly demanding on the functionality, comfort and interior aesthetics of buildings. This beefed up the development of interior design, which inevitably became an independent industry. In March 1986, the Institute of Interior Design and Research was established on the basis of the Interior Design Team. It was committed to inheriting and developing fine Chinese traditions, combining them with modern design theories, learning and introducing advanced foreign concepts and

雅的室内环境, 具有厚重的传统文化底蕴和深度感。这个项目获得了中国八十年代建筑工程优秀作品奖; 北京图书馆(现国家图书馆)获得全国优秀工程设计奖金奖、国家质量奖银奖、建设部优秀设计奖一等奖、“八十年代北京十大建筑奖”; 梅地亚中心获得建设部优秀设计奖; 外交部大楼获国家优秀工程设计银奖、建设部优秀设计二等奖; 全国政协办公楼获建设部优秀设计表扬奖、建筑师学会“优秀创作奖”提名奖、北京市建筑装饰成果汇报展优秀设计奖; 文化部办公楼获北京市第二届建筑装饰成就展览会优秀建筑装饰设计奖等。

为了适应市场的发展变化, 深化体制改革, 充分地发挥设计与施工相结合的优势, 1996年成立了北京筑邦建筑装饰工程有限公司, 公司具有建筑装饰设计甲级资质和建筑装饰工程壹级企业。

公司以设计为龙头, 以施工为依托, 以优秀

的质量和信誉为保证, 实行设计施工一条龙服务, 新体制充满生机与活力。六年来公司取得了令人瞩目的成绩, 北京外研社工程就是代表作之一, 它是建筑设计、室内设计与装饰工程的完善结合、取得成功的范例。室内设计师在对建筑师充分理解的基础上进行空间的再创造, 着力强化建筑富于变化的空间层次, 突出了“记载人类文明, 沟通世界文化”的主题。该工程获得了北京市1998年“长城杯”奖, 1999年“改革开放20年建筑装饰成就展”金奖, 北京市“优秀建筑装饰设计奖”, 2000年被评为“全国建筑工程装饰奖”项目; 威海中信金融大厦、北京大学100周年纪念讲堂、张家港会议中心等建筑装饰设计都获得了各种荣誉, 取得了优异的成绩。

室内设计研究所积极参与《建筑设计资料集》(室内设计)、《室内装修国家标准图集》、《建筑内部装修设计防火规范》、《建筑装饰工程概预算编制与投标报价手册》、以及《工程勘察设计收费标准》(室内装修设计) 等的编制

1. 北京国际饭店
2. 西安阿房宫凯悦酒店
3. 深圳华夏艺术中心



1



2



3

工作。室内设计所是中国建筑学会室内设计分会学术委员会和中国室内设计年刊编辑委员会常设机构的所在单位。北京筑邦建筑装饰工程有限公司是中国建筑装饰协会常务理事、北京市建筑装饰协会常务理事, 被中国建筑装饰协会评价为: “将是中国建筑装饰行业的中坚、脊梁和名牌企业之一”。

中国建筑设计研究院室内设计研究所将继续发扬优良传统, 不断开拓探索, 不断挑战自我, 发扬与时俱进的精神, 不断创作出更好的设计精品, 打造著名品牌, 为我国室内设计行业的发展做出更大的贡献。

编委会
2002年9月

technologies, and creating masterpieces of interior design for this new era. A successful example in this period was Qufu Queli Guesthouse of Shandong Province. The guesthouse was in harmony with the environment, space and style of the neighboring Confucius Palace and Confucius Temple in terms of structural form, materials and color. The consistency between the environment design and interior design, and both the inside and outside of the guesthouse were immersing in the Confucius ambience. This treatment brought out a serene, unsophisticated and graceful interior environment with the trait of dignified and profound legacy of traditional culture. This project won Excellent Works Award of Architectural Projects of the 1980's in China and Architectural Decoration Award of Beijing. In addition, National Library won national gold prize for excellent engineering design, national silver prize for quality, first prize for excellent design of the Ministry of Construction and top ten buildings of Beijing in the 1980's; the Media Center won excellent design award of the

Ministry of Construction and Beijing award for architectural decoration; the Office Building of the Ministry of Foreign Affairs won the national silver prize for excellent engineering design and the second prize for excellent design of the Ministry of Construction; the Office Building of the Chinese People's Political Consultative Conference won the recognition award for excellent design of the Ministry of Construction, nomination of "Excellent Creation Award" of the Institute of Architects and excellent design award at the demonstration of Beijing's achievements in architectural decoration; the Office Building of the Ministry of Culture won excellent design award for architectural decoration at the second Beijing Exhibition of Achievements in Architectural Decoration.

Over the past fifteen years, the Institute of Interior Design and Research, backed up by its strong capabilities, high quality, all-around service and fine

reputation, has made glorious accomplishments.

To adapt to market changes, deepen the system reform and fully exploit the advantageous integration of design and construction, in 1998 the Institute was merged into Beijing Truebond Building Decoration Engineering Co., Ltd., which possesses Grade A qualification for architectural design (interior design) and Grade One qualification for construction of architectural decoration.

With the focus on design and support of construction, the company offers a full range of services guaranteed by high quality and credit. The new system is full of vigor and vitality. Over the past six years, the company has made outstanding achievements. Beijing Foreign Language Teaching and Research Press was a representative work, a successful example that achieved complete harmony among architectural design, interior design and decoration works. Based on the full comprehension of the



1

architect's intention, the interior designer re-created the space to stress the varying spatial layers conceived by the architect and gave prominence to the motif of "recording human civilization and communicating world cultures". This project was granted the "Great Wall Cup" of Beijing in 1998, gold prize of "Exhibition of Achievements in Architectural Decoration over the 20 Years since Reform and Opening up" in 1999, "Excellent Award for Architectural Decoration Design" of Beijing, and was recommended as a project for "National Award for Decoration of Architectural Works" in 2000. The designing of architectural decoration for Weihai CITIC Finance Building, Centennial Lecture Hall of Beijing University and Zhangjiagang Convention Center obtained all kinds of honors as well.

The Institute has actively participated in the compilation of "Collection of Materials for Architectural Design (Interior Design)", "Collection of National

Standard Drawings for Interior Design", "Fireproof Specifications for Interior Decoration and Design of Buildings", "Manual for Preparation of Estimate and Budget of Architectural Decoration Works and Tender Offer" and "Charge Standard for Engineering Exploration and Design (Interior Decoration and Design)". The Institute is also the domicile for the Academic Committee of China Institute of Interior Design and the permanent establishment of the editorial board of Yearbook of China Interior Design. Truebond Company is the standing director of China Building Decoration Association and Beijing Building Decoration Association. It is credited by China Building Decoration Association as it "will be the backbone and big name in China's architectural decoration industry".

The Institute of Interior Design of CAG and Beijing Truebond Building Decoration Engineering Co., Ltd. will develop the good traditions, continue the explorations and take up new challenges to keep



2

abreast of the times, to create better works and to build famous brands, thereby contributing even more to the development of China's interior design industry.

Editor Board
September 2002

1. 全国政协办公楼

2. 外交部办公楼

项目 Works



室内设计：戴念慈 黄德龄 付秀蓉
刘淀淀 饶良修 今 苓
谈星火

设计时间：1984 年

竣工时间：1985 年

曲阜阙里宾舍是一幢紧邻孔府的三星级饭店，建筑面积1.4万平方米。曲阜是中国文化圣地，现代化的宾馆如何体现传统文化，特别是孔文化是室内设计的关键。所有设计元素——空间、色彩、造型、照明灯饰、家具、陈设装饰、雕塑等——均在调查研究的基础上去粗存精，营造一个和谐、高雅、端庄的宾馆环境，并借助知名艺术家创作的艺术品对宾舍的文化氛围起到点睛作用。运用传统工艺的灯饰、家具，既实用又具有厚重的历史感。色彩、材料等元素追求地方传统与现代工艺的结合，创造出强烈的个性特色。这一特色十多年来一直保持下来未曾改动，并成为经典。本项目获1989年“中国八十年代建筑艺术优秀作品奖”，1986年“建设部优秀设计一等奖”。

Qufu Queli Guest house is a 3-star hotel adjacent to Confucius' mansion, with a floor area of 14,000 square meters. Qufu is the cultural holy land of China. The key

problem of architectural design, especially indoor design, is how to exhibit traditional cultural atmosphere in a modern hotel. On the basis of carefully investigation and study of space, color, model, lights, furniture, furnishings and statues, the unification, elegant and dignified hotel environment is created. Art crafts produced by well-known painters and artists help put life to cultural atmosphere of the hotel. Lamps and furniture made through traditional craft are useful and of decorative function. The design elements like color and texture etc. combine the local traditional features with modern technology; therefore, the most suitable individuality is created, which keeps unchanged after it was set up.

曲阜阙里宾舍 Queli Guest house, Qufu

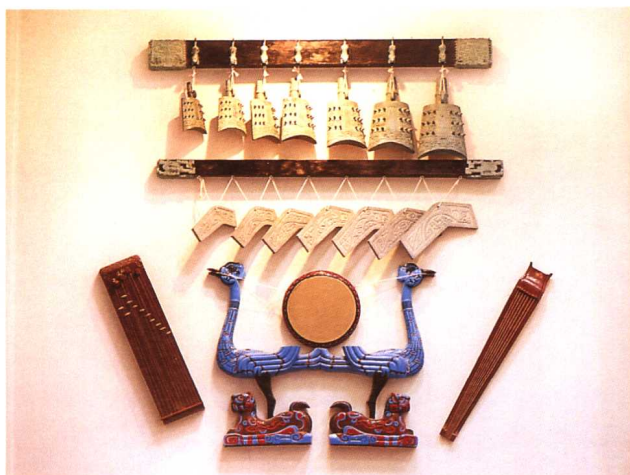
1. 由大厅向中餐厅方向，可见回廊开道铜锣栏板三面中的两面，别具特色
2. 大厅中心鹿角立鹤以曾侯乙墓文物为原型放大复制而成，表达祥和迎客之意，造型挺拔夸张。上部由传统宫灯符号的构成，与鹤相辉映；周边石膏浮雕的《孔迹图》依无梁殿所存石刻素材创作





武厅平面与文厅相似。剑戟兵器
墙饰亦起标识作用





1



2



3

1. 文厅古乐饰
2. 中餐厅, 传统的椽子木构在此成为空灵的顶饰, 黑色铜釉砖让人感到孔府独具的色彩
3. 文厅位于客房风车形平面的交汇处