

GENERAL VIEW OF WORLD ARCHITECTURE
MODELLING AND PLAN DESIGN NONESUCHIS

世界建築造型與平面設計典例大觀

980253

世界建築造型與平面設計典例大觀

GENERAL VIEW OF WORLD
ARCHITECTURE MODELLING
AND PLAN DESIGN
NONESUCHS

YANG YUN-JUN CHIEF EDITOR

楊運均 主編

980253



CHENGDU UNIVERSITY OF S & T PUBLISHING HOUSE

成都科技大學出版社

(川)新登字 015 號

《世界建築造型與平面設計典例大觀》

(1-6)二套

主編:楊運均

主審:曾昭奮 章又新 李雄飛

主譯:楊運均

顧問:杜學富 李雄飛 張 磐 雷春濃
聶明剛

策劃:楊運均 危明安

組織實施:危靜萍

編委:劉成節 付道難 陳柔遠
危 聰 雷心田 王 紅
和正榮 白茂瑞 王正立

描圖:陳丹陵 趙 輝 唐 瑾

版式設計:王 浩 杜 萍

封面設計:木 土

責任編輯:陳美秀

GENERAL VIEW OF WORLD
《 ARCHITECTURE MODELLING 》
AND PLAN DESIGN NONESUCHS

NO: 1-6 VOL: 2

CHIEF EDITOR: Yang Yunjun

CHIEF JUDGERS: Zhen zhao fen Zhang you xin
Li Xiong fei

CHIEF TRANSLATOR: Yang yunjun

ADVISER: Du xue fu Li xiong fei Zhang pan
Lei Zun long Nie ming gang

PLANNER: Yang yun jun Wei ming an

ORGANIZE AND EXECUTER: Wei jing ping

EDIT COMMISSIONER: Liu cheng jie Fu dao nan

Cheng rou yuan

Wei zhong

Lei xin tian Wang hong

He zheng yun Bai mao rui

Wang zheng li

CARTOGRAPHERS: Cheng dan ling Zhao hui

Tang jin

FORM DESIGNER: Wang hao Du ping

SEALING FACE DESIGNER: MU DU

BUSINESS EDITOR: Cheng mei xiu

成都科技大學出版社出版

新華書店重慶發行所發行

香港洲立出版有限公司

亞洲分色制版有限公司

印刷

開本: 787 × 1092 1/16

印張: 108

1992 年 7 月第一版

1995 年 2 月第二次印刷

1-6 冊總字數: 2500 千字

印數: 3000 - 8000

ISBN7-5616-2950-8/TU · 38

國內定價: 每套($\frac{1-3}{4-6}$)各 344 元

總定價: 688 元

Published by Chengdu university of S
& T Publishing house

Distributed by Xinhua Bookstore,
chongqing

Printed by

Hong kong continent publish Co. Ltd
Asia scanning and plate making Co.
Ltd

787 × 1092 1/16mo

printed sheet: 108

1st published: 1992.7,

2nd Impression 1995.2

Total words (No: 1-6): 2500 thousand

ISBN7-5616-2950-8/TU · 38

前言

建築是人類文明和進步的典型標志；借鑒交流是建築師再創造的橋梁，文獻資料是造就建築師的實習工廠。

建築師的成就很大程度取決於他掌握造型語言的能力，而造型不是飄在雲中的海市蜃樓，而是立在地面上建造矗起的奇觀。所以，無論是在建築師搖籃中的學生或描繪宏偉藍圖的設計大師都力求實現造型與平面的完善協調，實用美觀。

縱觀中外已出的無數建築書中，外觀“影集”類居多，造型與平面配套者不多，能囊括世界性和建築全方位的配套者更少。

所以，本書仍是從建築情報的角度出發，在中外上千本各類建築書、刊、資料、方案等書山文海中采集標本，再在名師的指點下篩選提煉、濃縮，力求加工出一本有高營養價值而又系統完整的範本，能幫你垂手可摘取設計實用的資料果實源，供襁褓中的建築學生學習參考；供建築師作借鑒、啟迪并點燃靈感的火花，再升騰出新建築的壯觀。

由于被引用的作品勝多，且多數難以尋根，未能一一列出，敬請諒解。好在大師們不朽的作品本身就是供后人瞻仰的豐碑，一定會感到欣慰的吧！編者只不過是英雄群像的小小攝影師而已。

要感謝章又新教授，曾昭奮主編，李維飛副教授，張磐副教授等名師的指點，感謝杜學富顧問對本書能以精品形象出臺獻給讀者所作的努力；并向為本書終于問世付出辛勤而默默勞作的人們致以崇高敬禮！

疏漏之處，敬請名家和讀者指正。

編者

FOREWORD

The architecture is a typical sign of civilization and progress of human beings. To use experience of others and exchange are the bridge of re-creation for architects. The literature and information are the practice factory for building up an architect.

The success of an architect to a great extent depends on his ability of mastering formative language, and the formation is not a mirage in the sky, but a marvellous spectacle on the ground. Either the student, as in a cradle for architect or the master, designing a great project, attempt to accomplish the coordination of formation with the plan, making the formation practical and graceful.

Among the published architectural books, most are "album" of exteriors, only a little gives the combination of formation with the plan, even less the combination of world architecture and architecture in all aspects.

From the view point of architectural information, taking samples from thousands of various architectural books, journals, references and projects, then they are selected, refined and concentrated under the instruction of masters. To strive for making a systematic and complete example and guide with high nutrition. To bring you climb high for looking over the panorama of the world architecture, and to help you pick the fruit of the practical information for architectural design. A reference for the architectural students who are as babies in this field, and experience to use for the architect, enlight the spark of inspiration to produce a glorious new building.

Because of there are so many works cited and most are difficult to find the origin, so they are not listed one by one. very sorry. Luckily that your immortal masterwork itself is a monument for the successors to look at, you may be gratified at that! Editor is only the small photographer of a group of heroes.

Thanks to professor Zhang you xin, Chief editor Zhen zhao fen, associate professor Li xiong fei and associate professor Zhang Pan gave their instructive guide. Thanks to adviser Du xue fu for their effort to make this book as an excellent work for the readers. Here we give our compliments to those who immersed in their work and worked hard for this book!

Comments on negligence or omission are welcome.

Editor

《世界建築造型與平面設計典例大觀》

General view of world Architecture
Modelling And plan Design Nonesuchs

第五分冊

NO.5

目 錄

Contents

- | | |
|---------|-----------------------------|
| 1. 辦公建築 | Office Architecture (5) |
| 2. 綜合建築 | Complex Architecture (133) |
| 3. 教育建築 | Education Architecture(231) |

1. 辦公建築

Office Architecture

建築面積: 371600 米²

結構: 鋼

含聯合國總部辦公室, 15 個會議廳, 共 7 幢 12 到 38 層, 最高 180 米。其形式清晰簡潔, 十分干脆果斷, 各具特色的要素連在一起, 形成的公共空間。

Building Area: 371600m²

Structure: steel

The Program Provides Headquarters and Conference Center, Offices are housed in Seven Towers ranging from 12 to 38 stories.

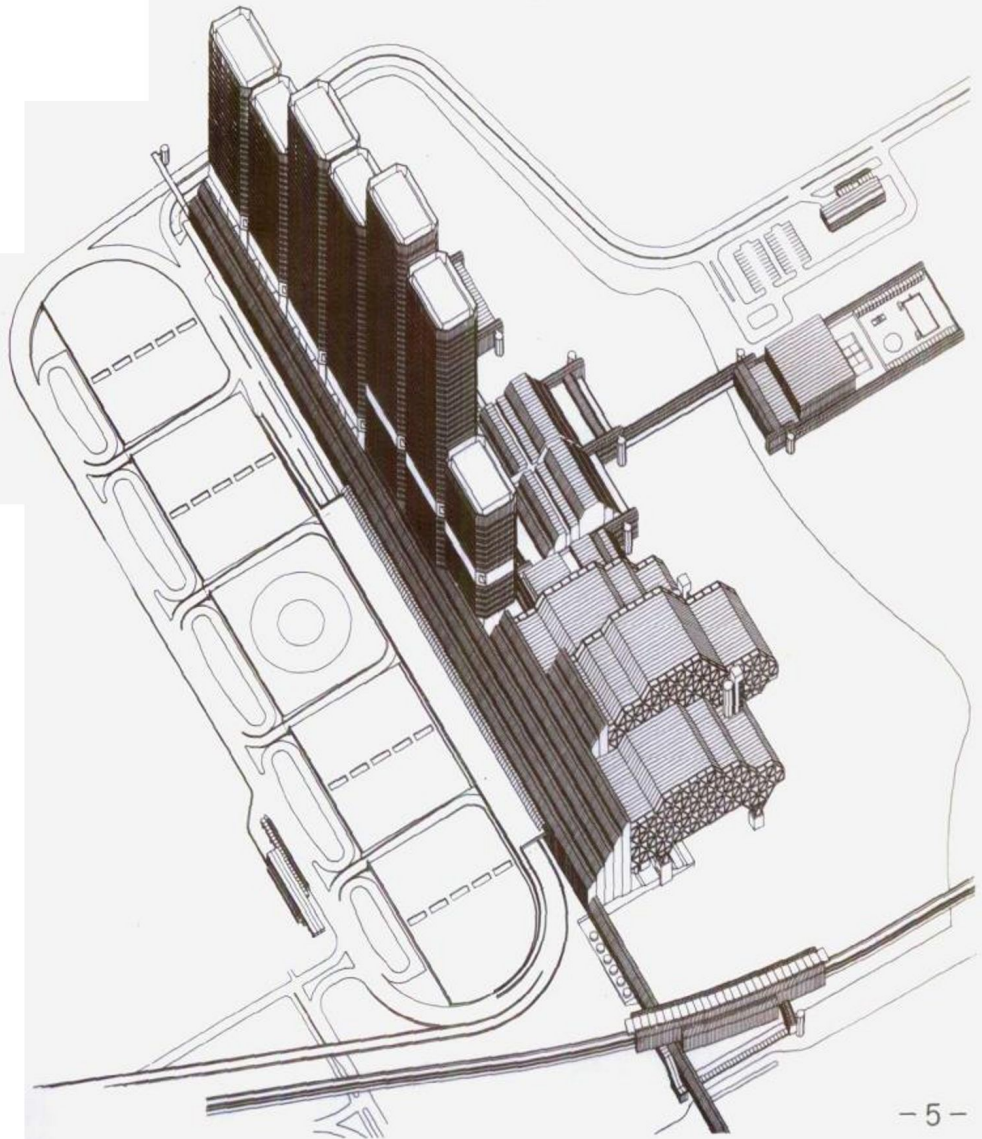
奧地利·聯合國城

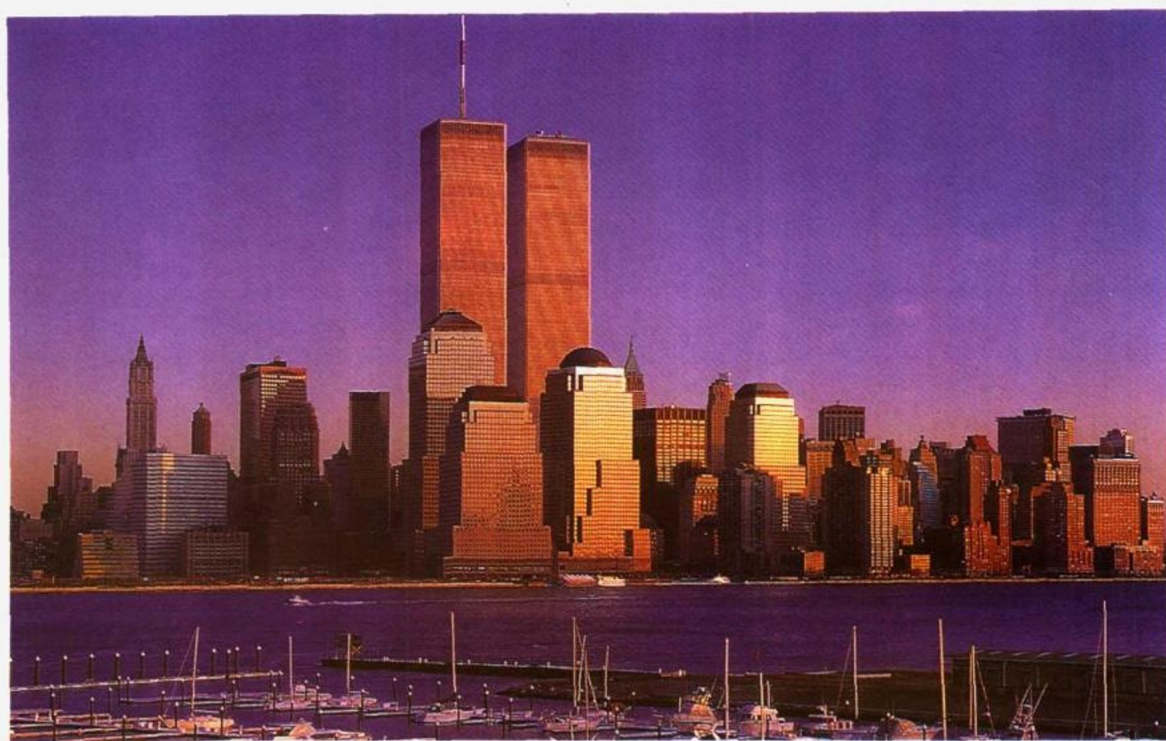
UN city (Austria)



軸測圖

Axonometric



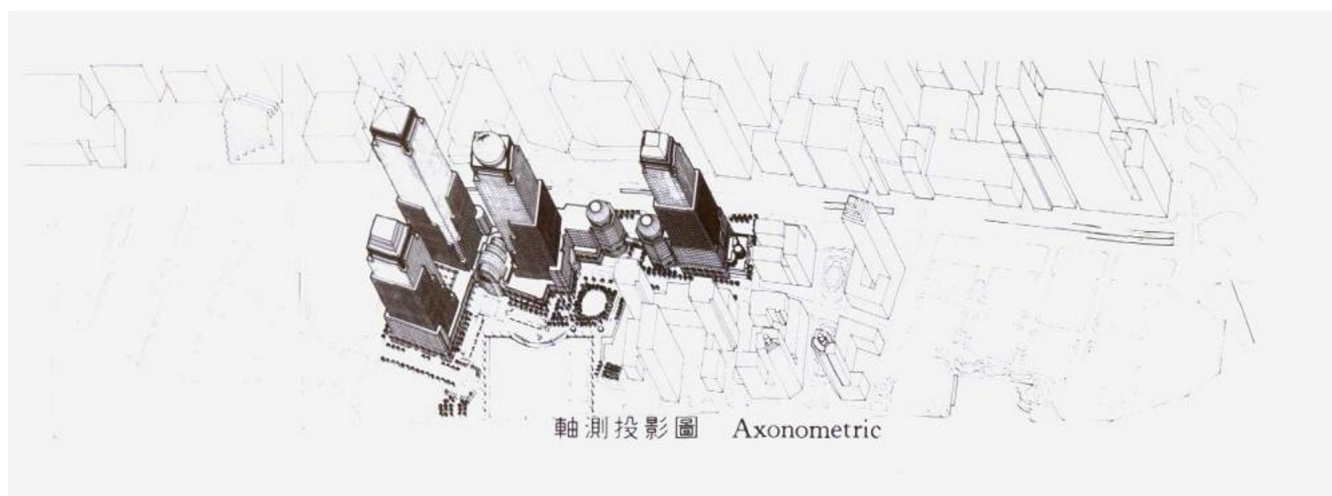


紐約・世界金融中心

World Financial Center (New York)

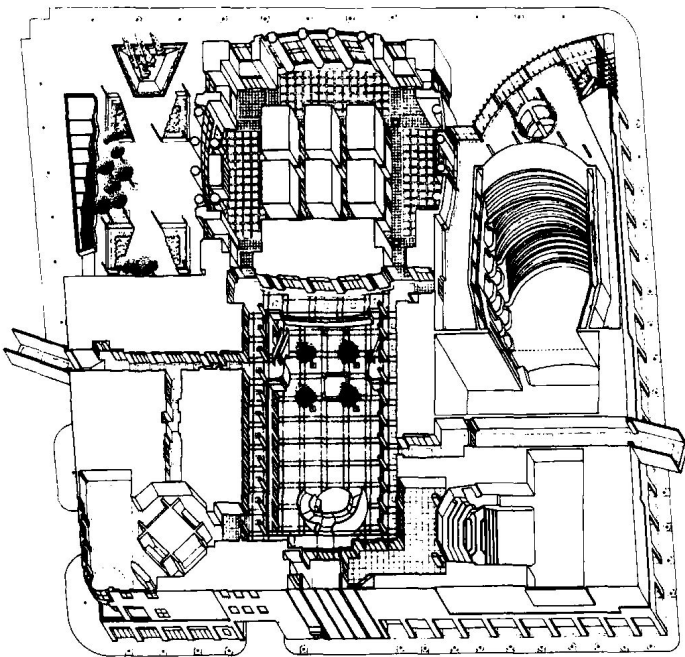
建築面積：798940 米²。結構和材料：鋼框、花崗石、反射、透明的陶瓷玻璃、銅屋頂。該中心含 4 棟辦公大樓，高 34 到 51 層。由下到上逐步反光到全反光，艷麗輝煌。創造了獨壓群雄的天際綫。

Buildings Area: 798940m², Steel Frame. It Consists of four office towers, Ranging in height from 34 to 51 stories.

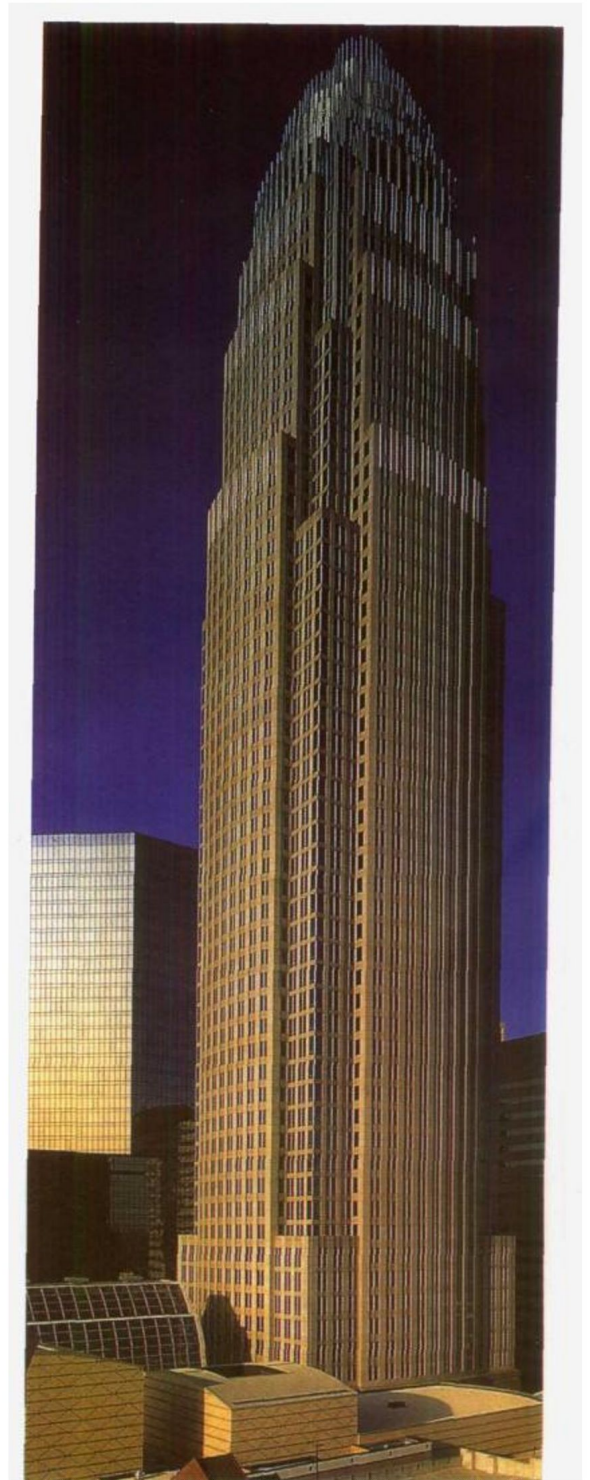


建築面積:111480 米², 結構和材料:現澆混凝土, 大理石, 花崗石, 頂部是鋁合金, 含 60 層的銀行總部, 景觀廣場和大廳。

Building Areas:111480m², poured - in - place concrete. The Center include the 60 - story headguarers tower, a landscaped plaze and Founders Hall.



底層軸測投影圖 Axonometric



美·北卡羅來那國家銀行中心
Nation Bank Center(USA)

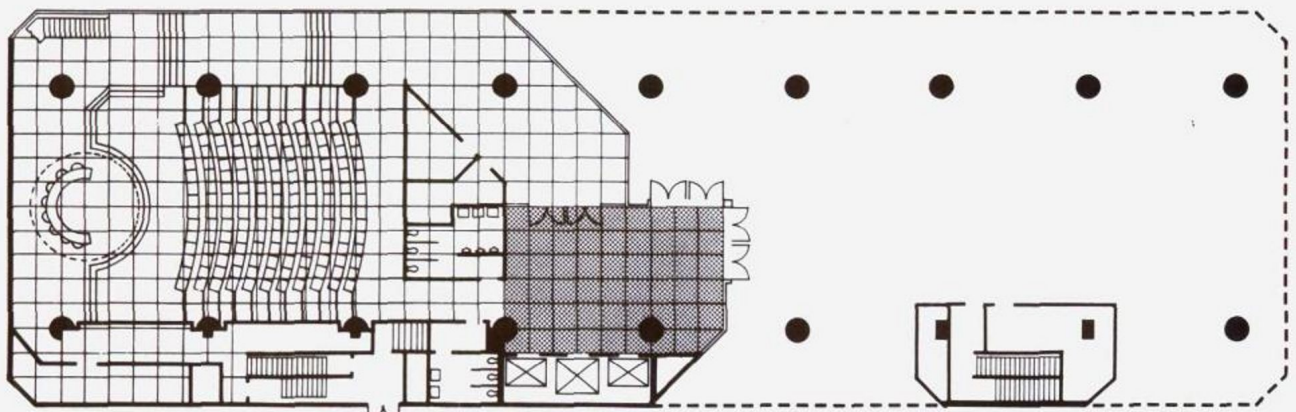
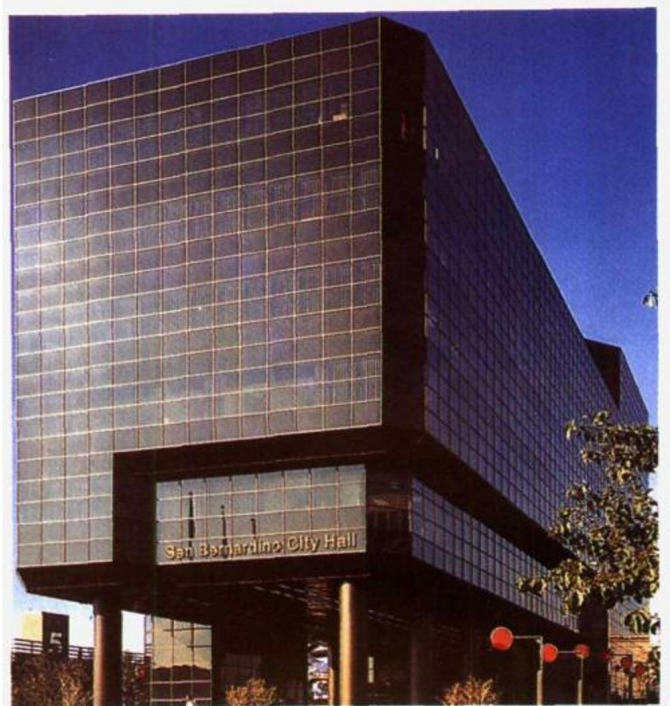
辦公建築

Office Architecture

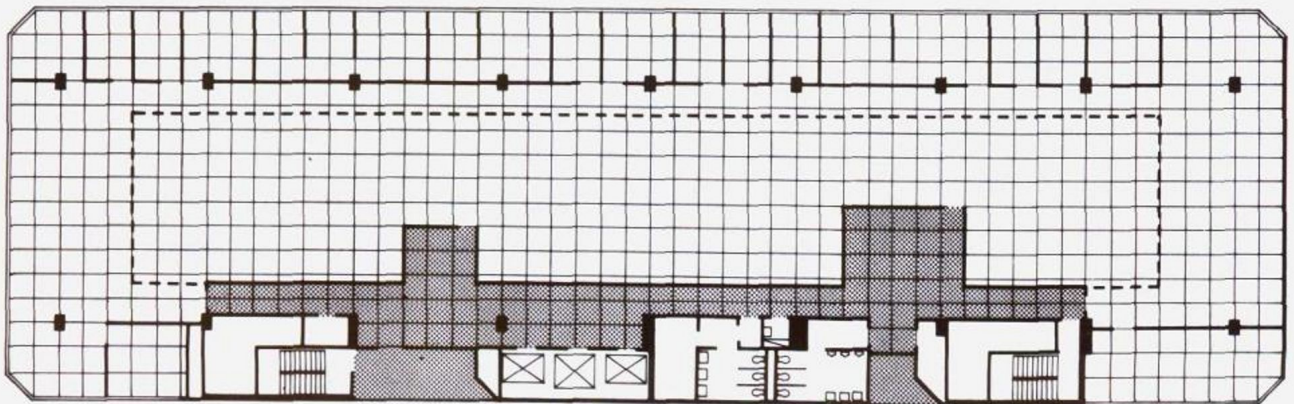
建築面積:10450 米², 結構:鋼筋混凝土, 淺青銅色玻璃窗和暗青銅色結構玻璃拱肩。內含會議設施辦公建築, 和一個市政廳及停車場。外觀造型有強的雕塑型, 玻璃全封閉, 形成銀色的門楣, 很富表現力。

Buildings Area:10450m². Reinforced Concrete, The City Hall is a Strong Sculpted form, Completely enclosed in glass.

美·加利福利市政廳
City Hall (USA)



底層平面 Ground floor



上層平面 Upper floor

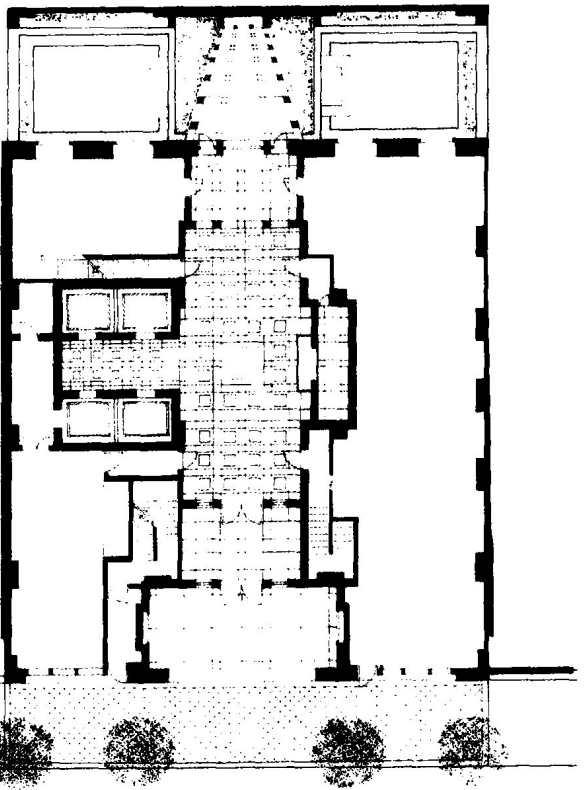
辦公建築

Office Architecture

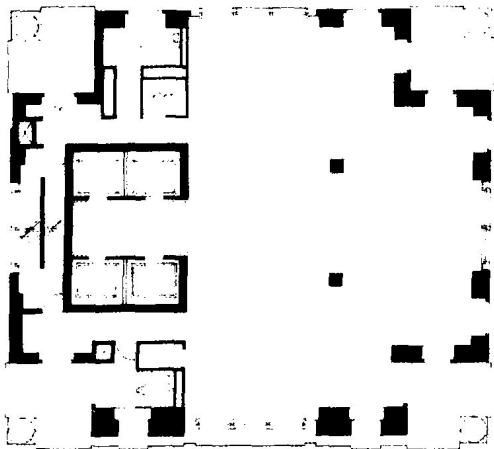
這幢 25 層辦公樓明顯突出了底部和中
部。是傳統的城市中心地區建築翻版。
正面外觀是明快的灰、綠二色花崗岩和
白色豎框與灰色玻璃的組合。

A 25 - storeyed office building with emphasis
on the middle and lower parts.

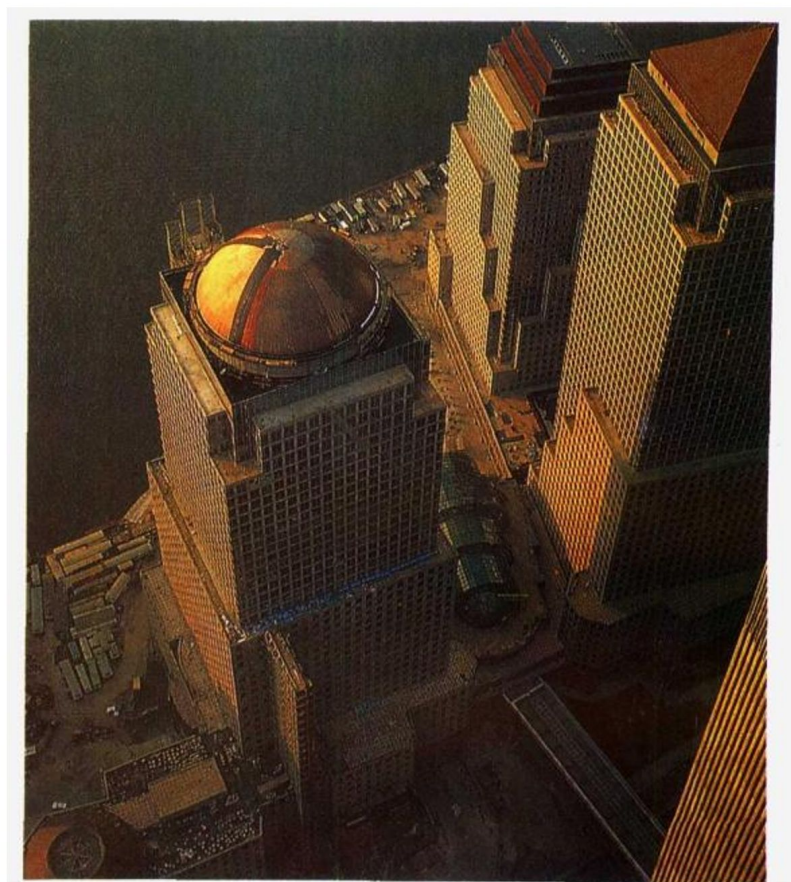
辦公大廈(美國)
Office Tower (USA)



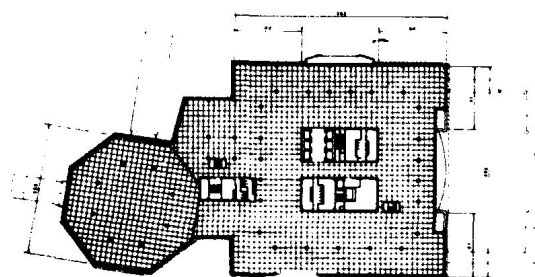
首層平面 First floor



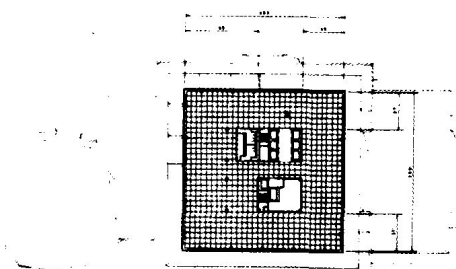
22 層 - 25 層平面圖 22~25th floor plan



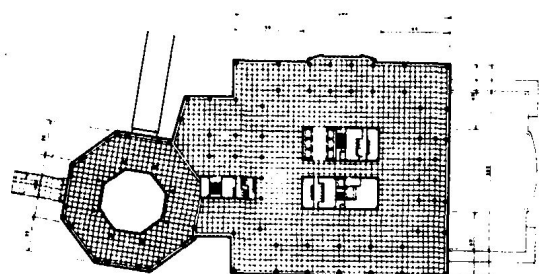
美·哈得遜河畔上的國際金融大廈
International Financial Tower(USA)



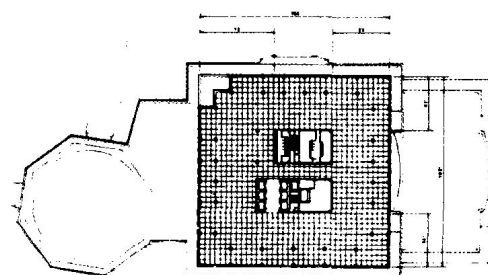
A 棟:4-9 層平面圖
4~9th floor



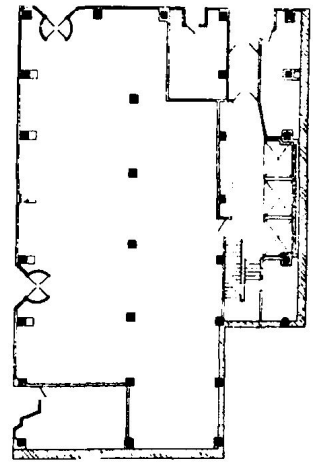
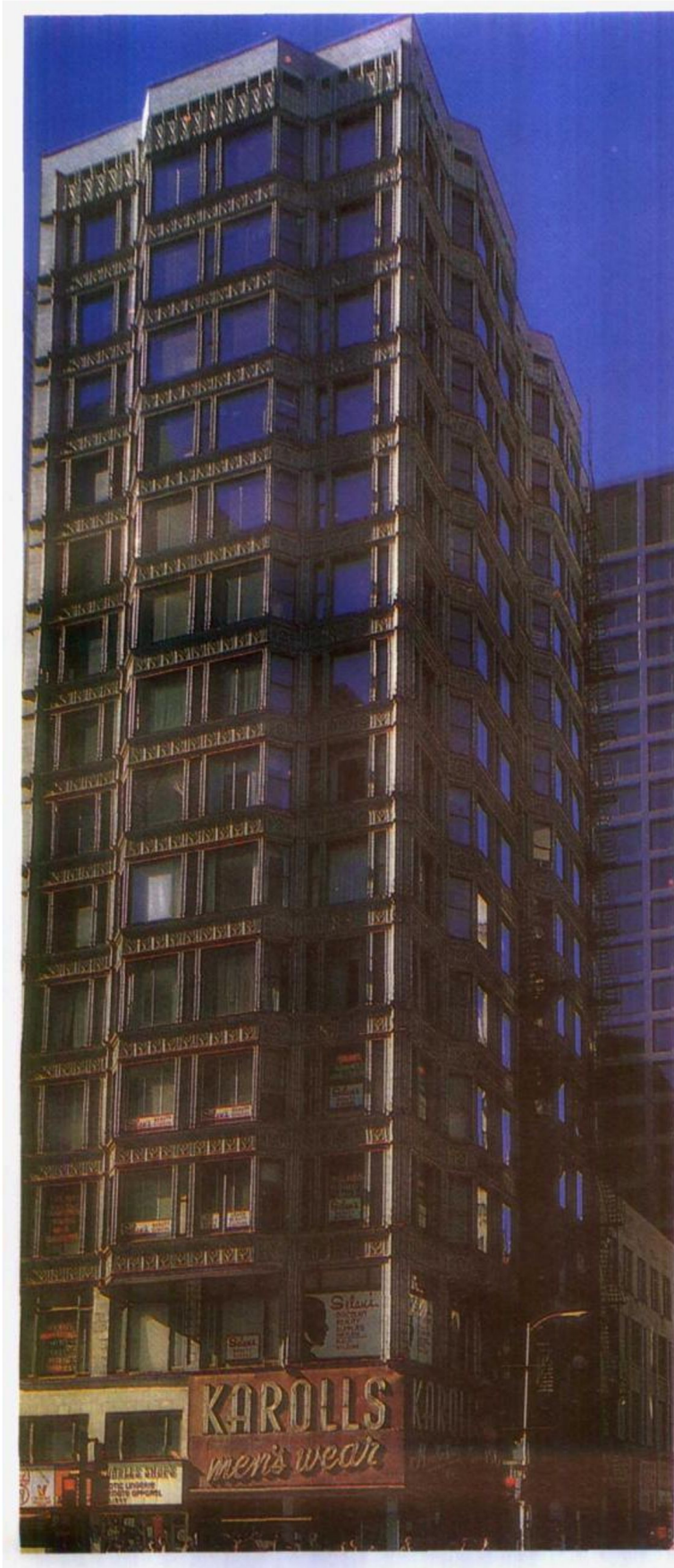
A 棟:26-37 層平面圖
26~37th floor



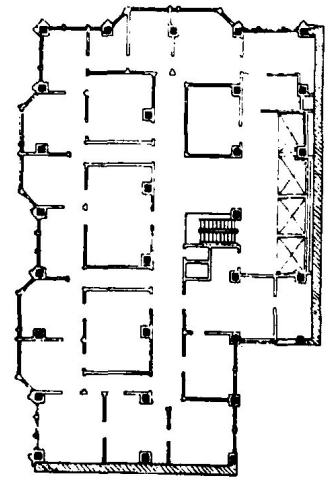
A 棟:3 層平面圖
Third floor



A 棟:10-25 層平面圖
10~25th floor



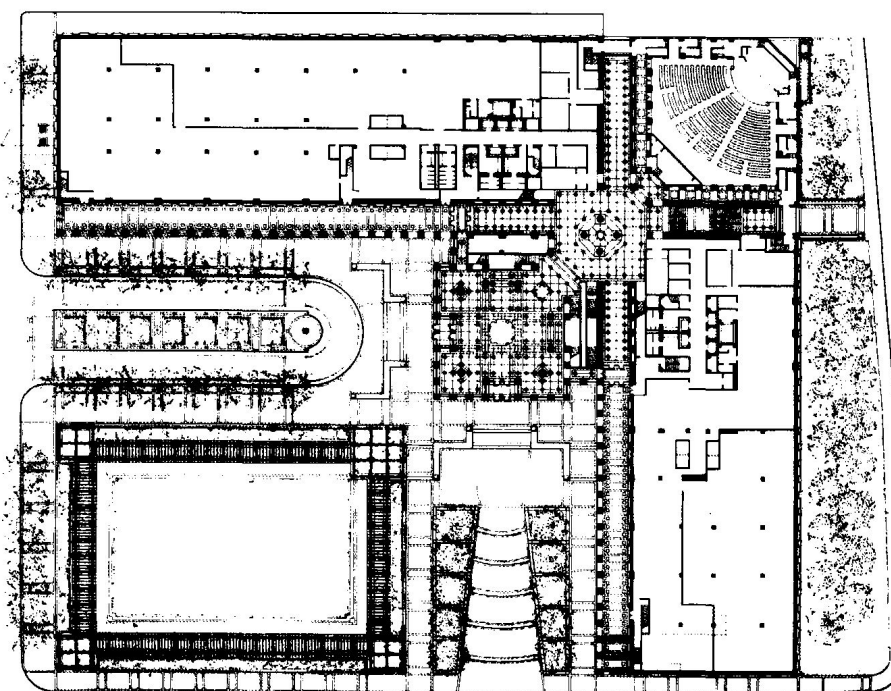
1 層平面圖
First floor



芝加哥·信托大廈
Trust Tower (USA)

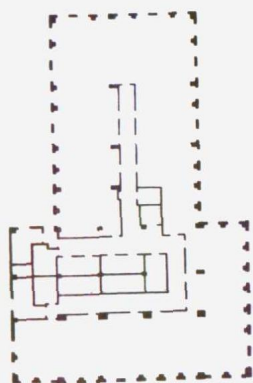


辦公樓 Office Building



首層平面
First floor plan

紐約・每日新聞大樓
Daily News Tower (New York)

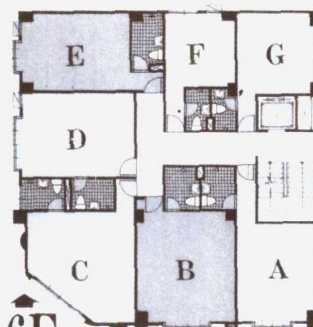


標準平面圖
Standard plan





5 - 12th floor plan.



6F

平面參考



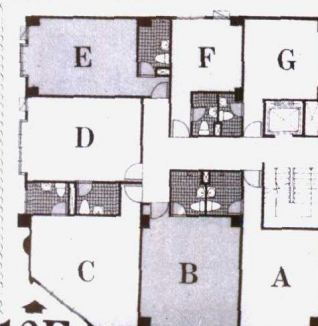
10F

平面參考 11樓略同



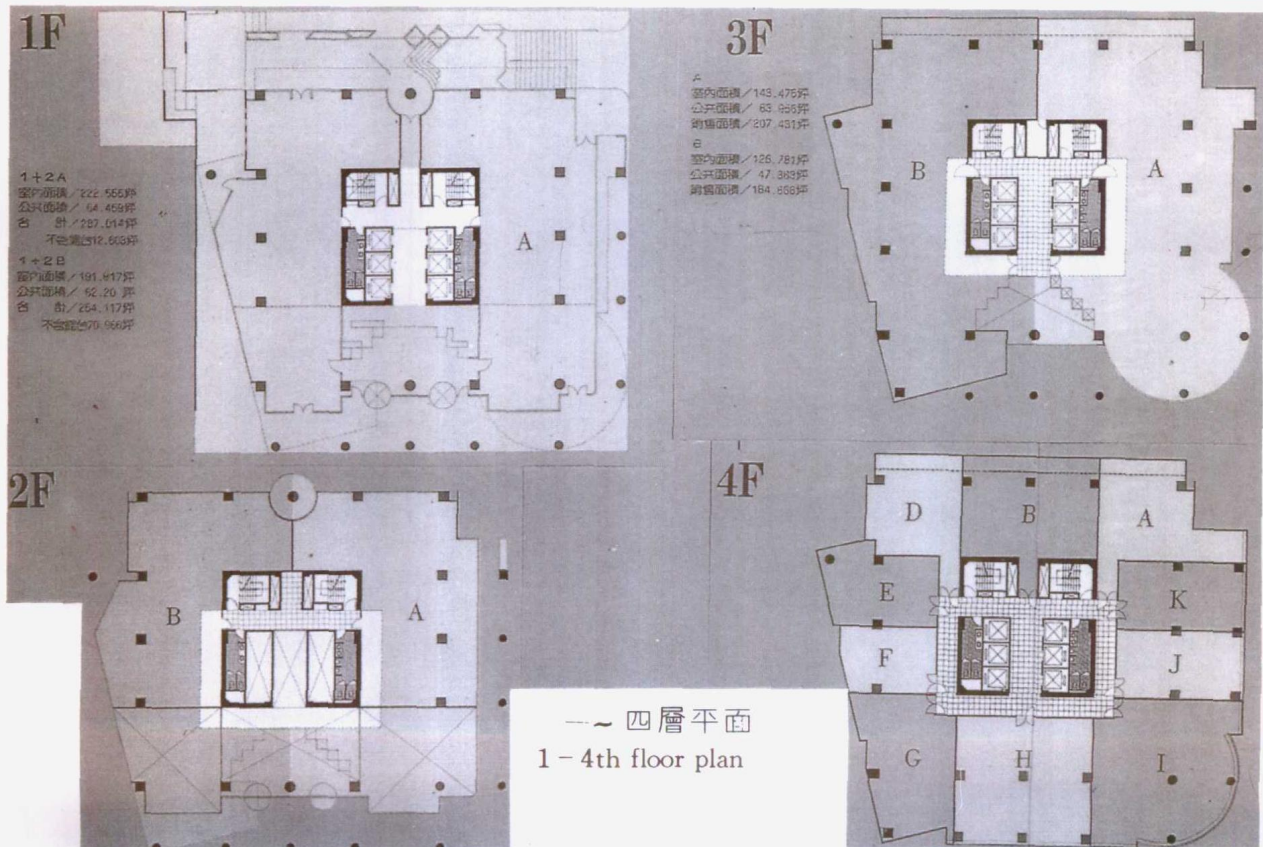
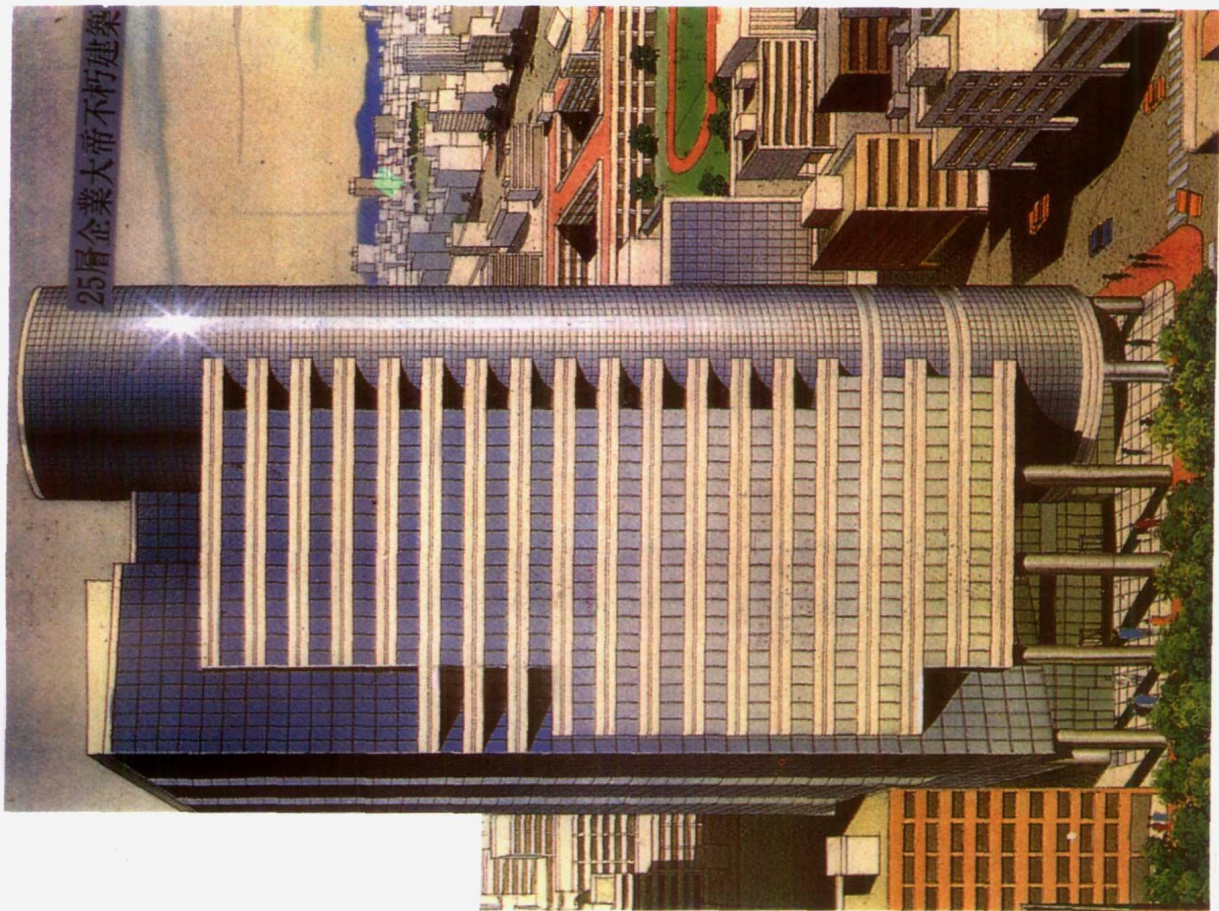
7F~9F

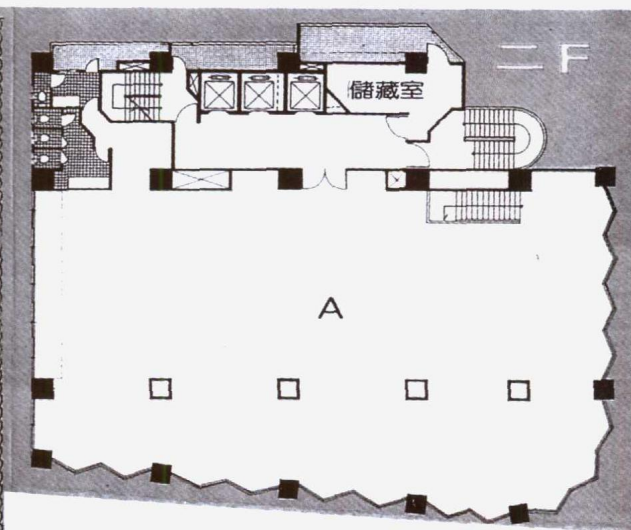
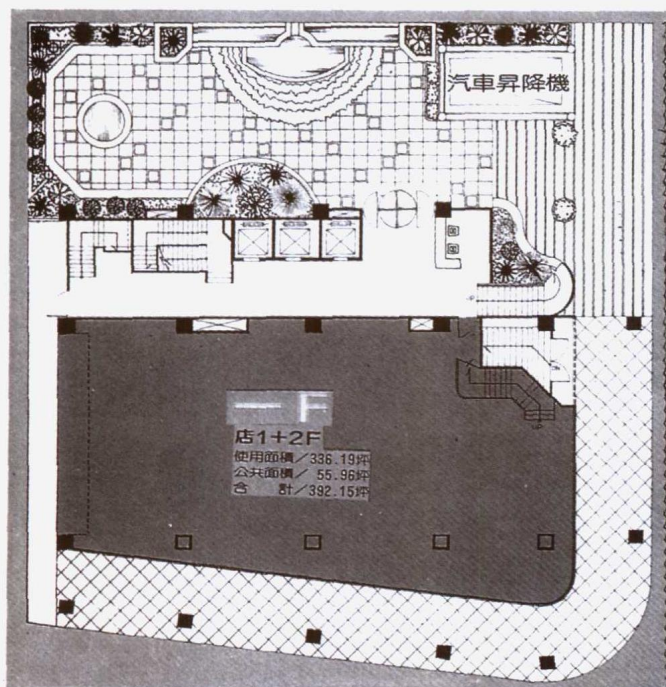
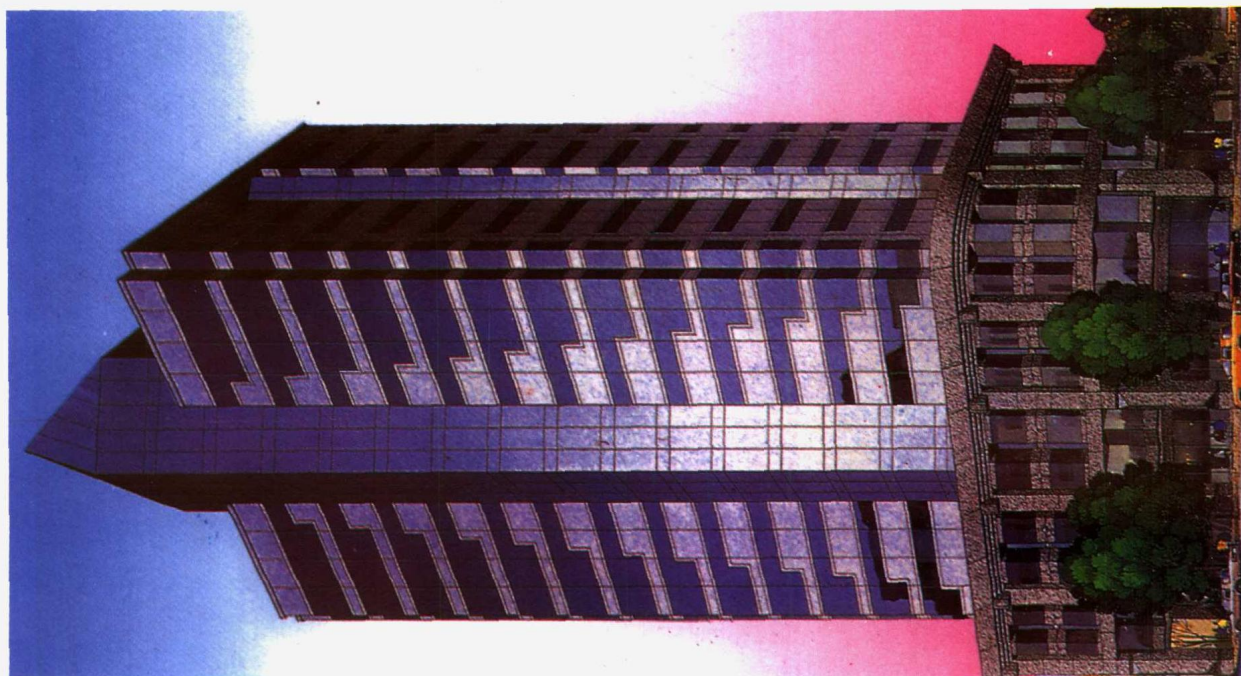
平面參考



12F

平面參考圖





平面圖 plan