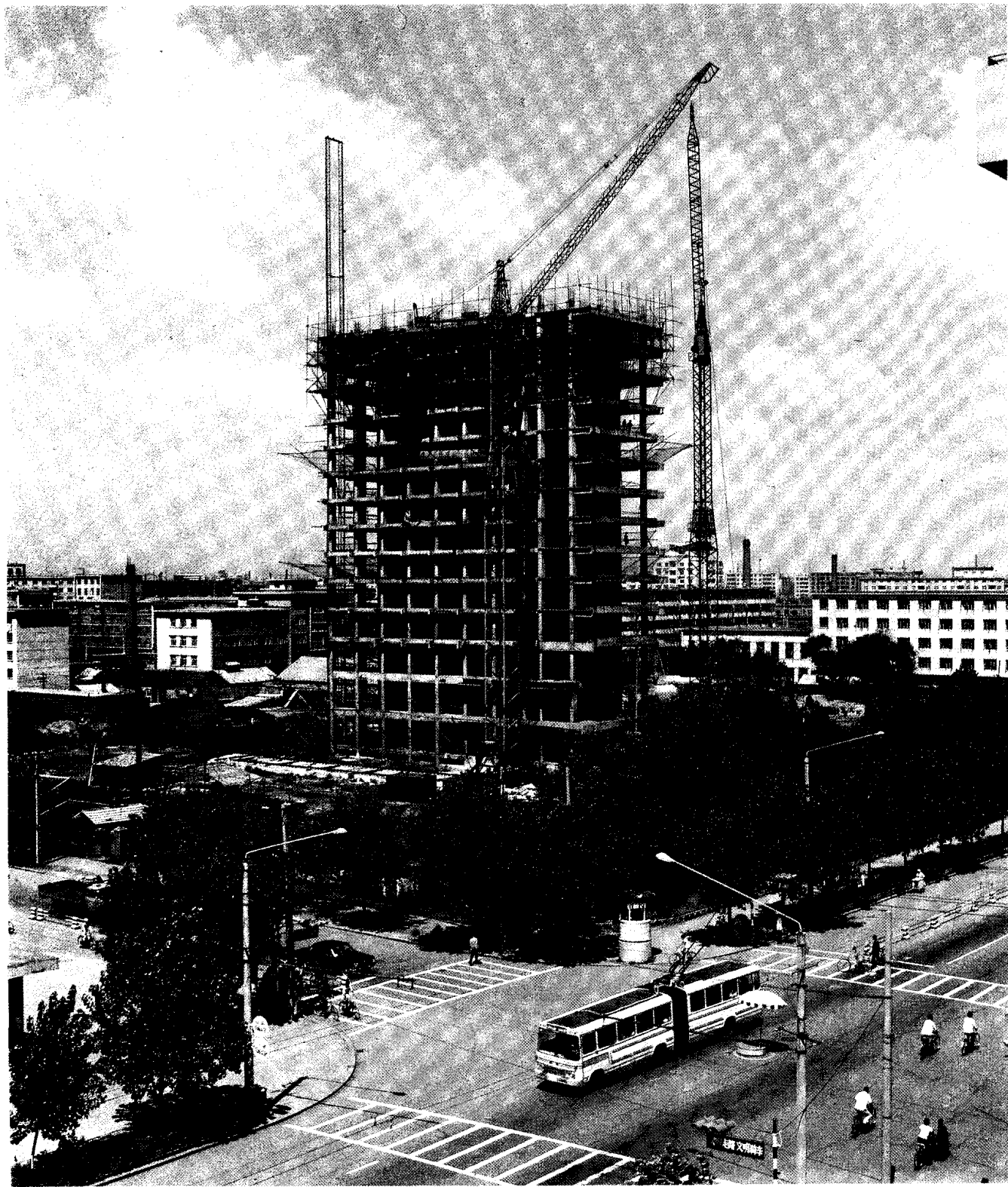
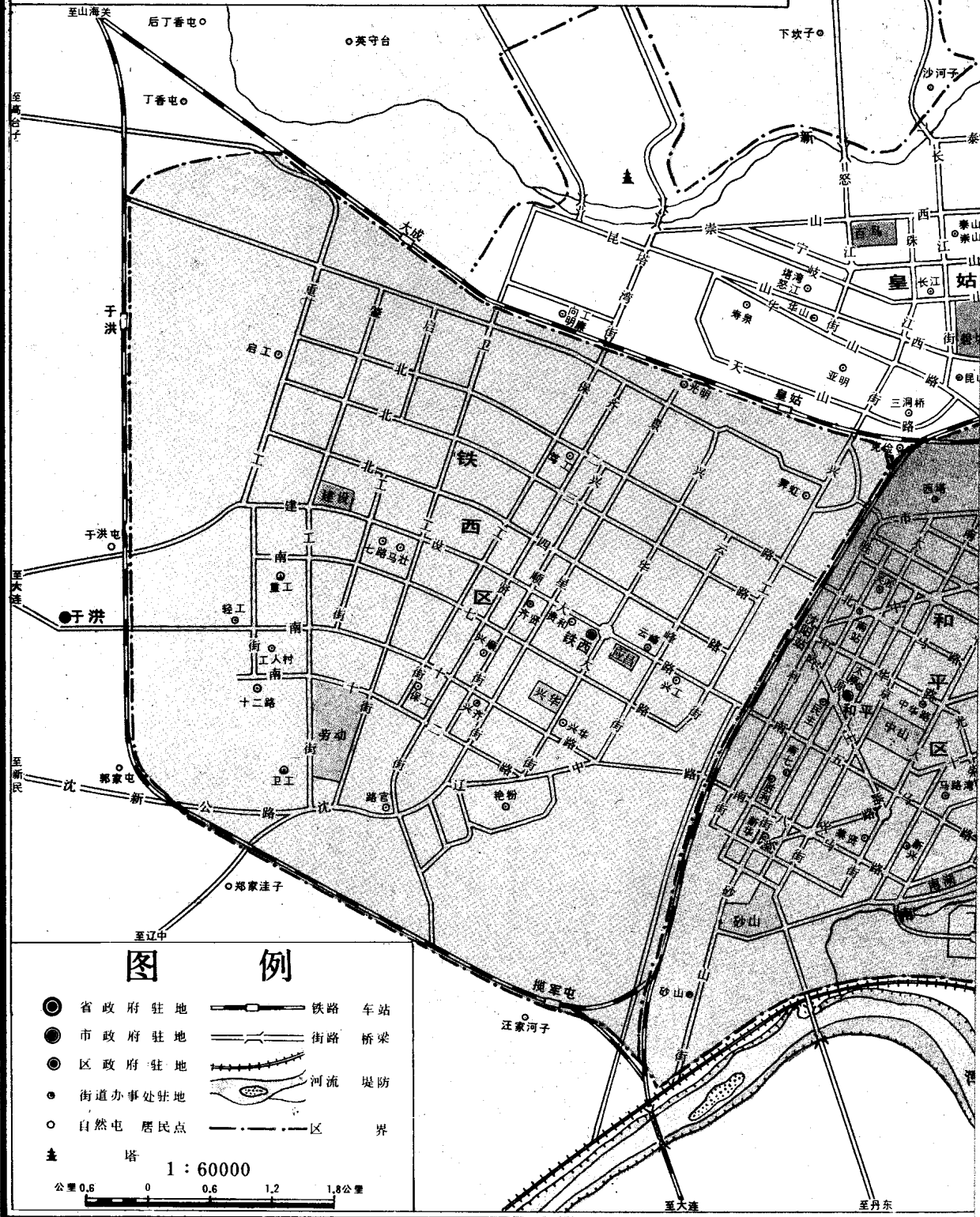


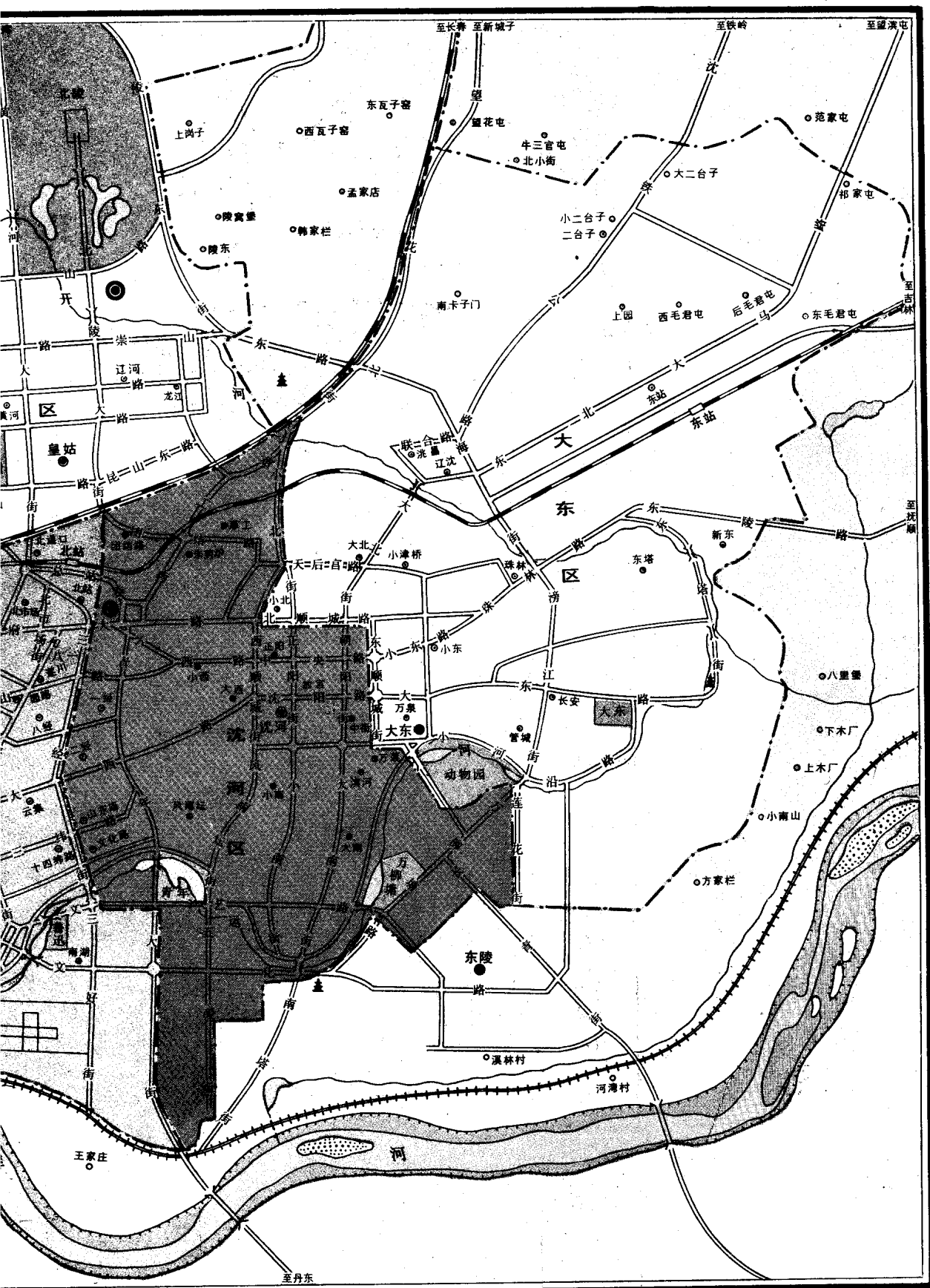
市情
瀋陽

SURVEY
OF SHENYANG

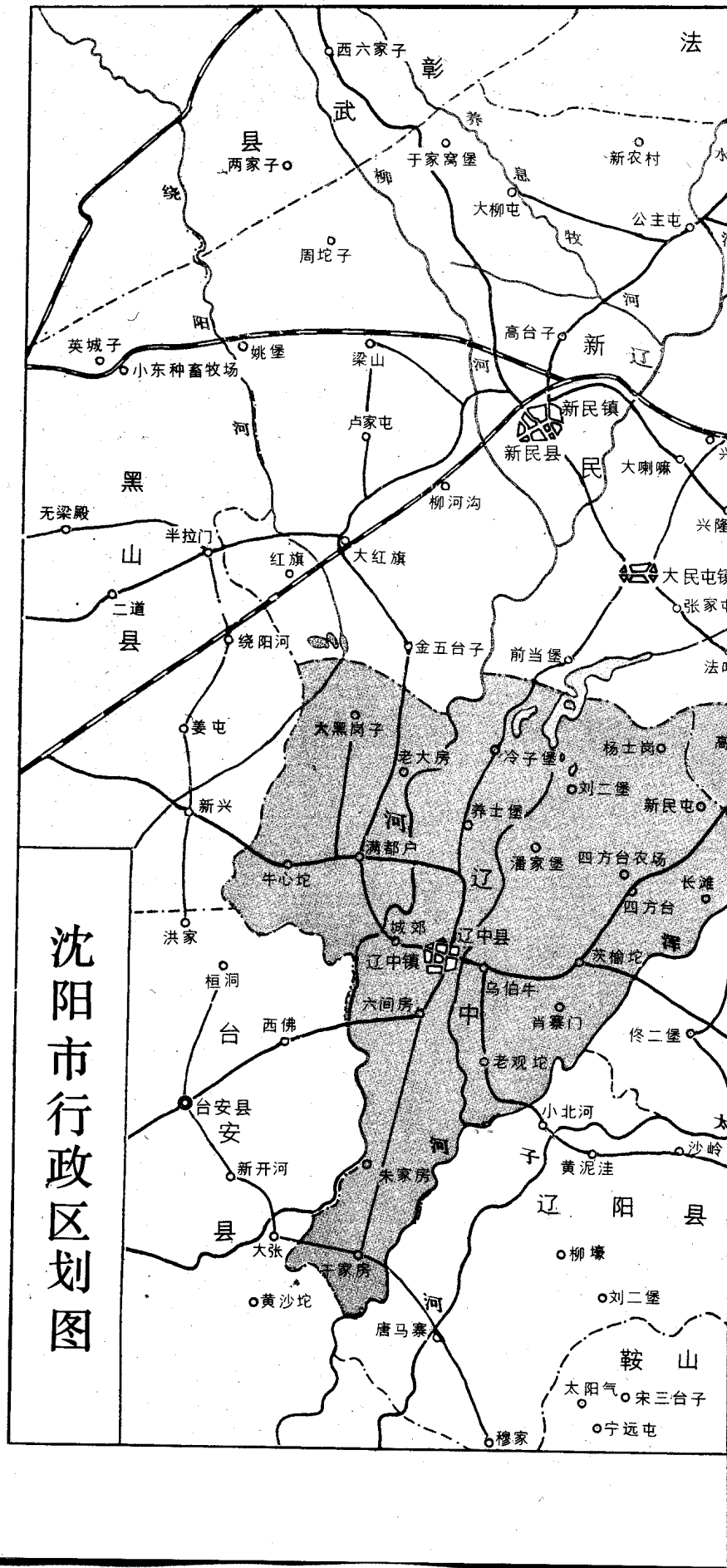


沈阳市街略图

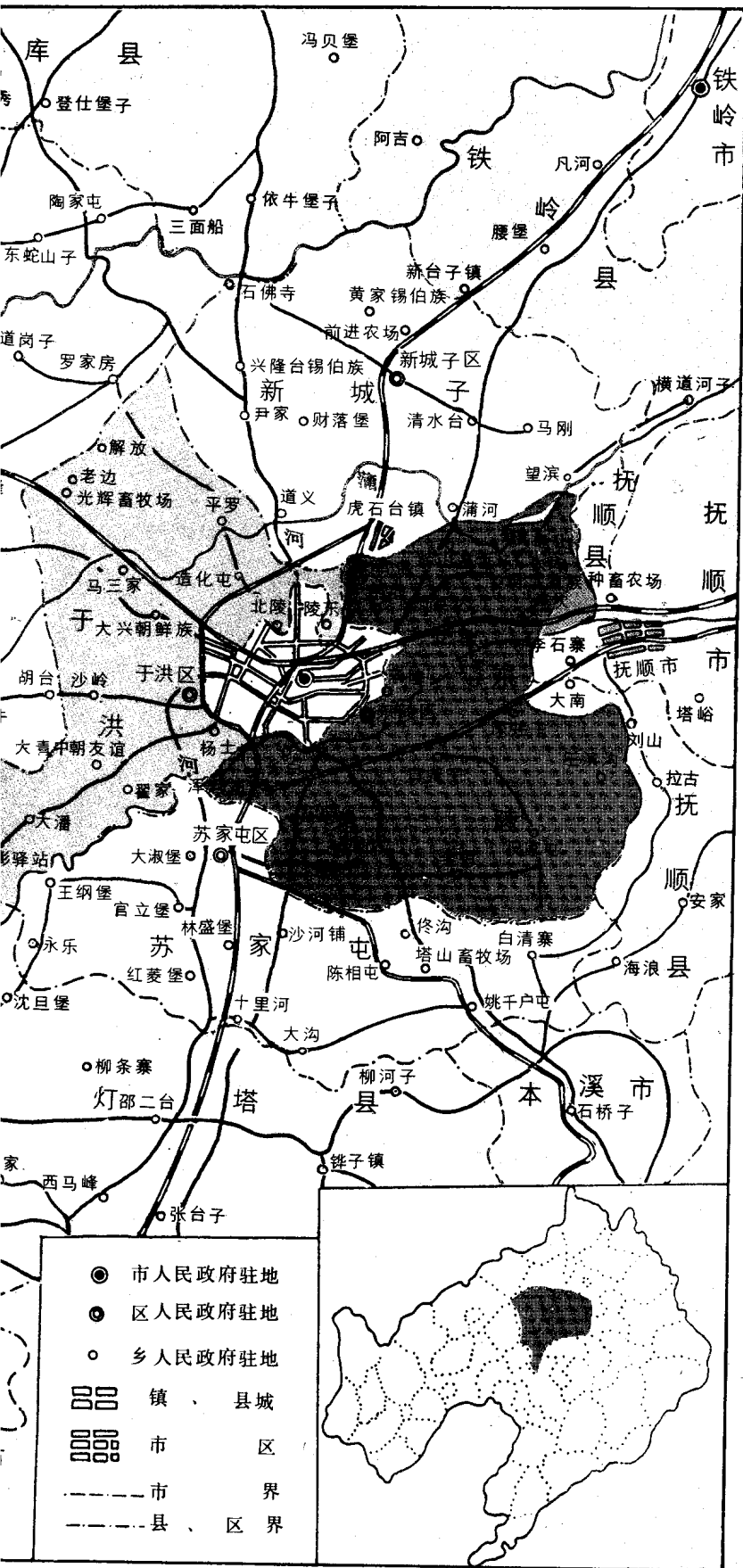




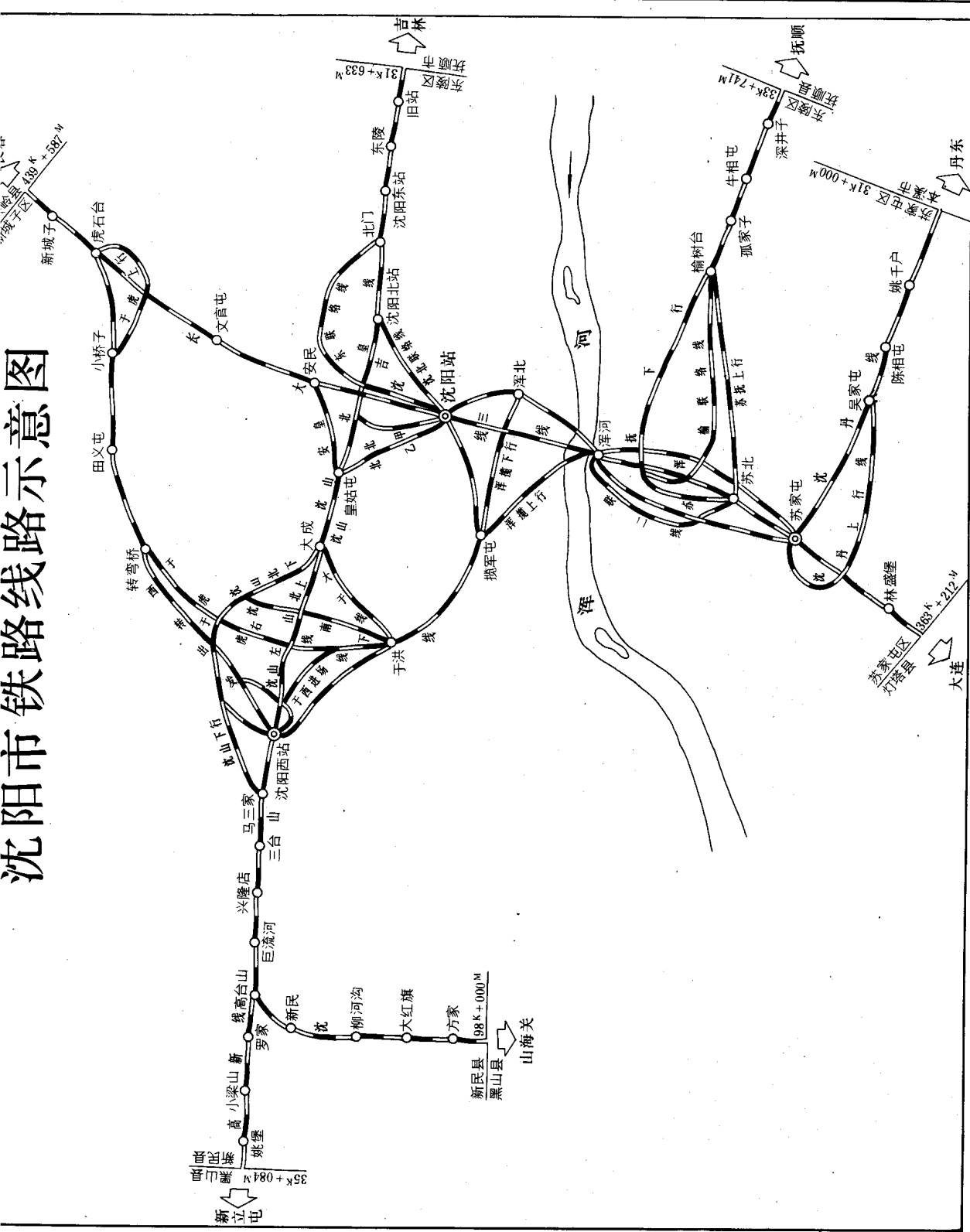
沈阳市地名办公室

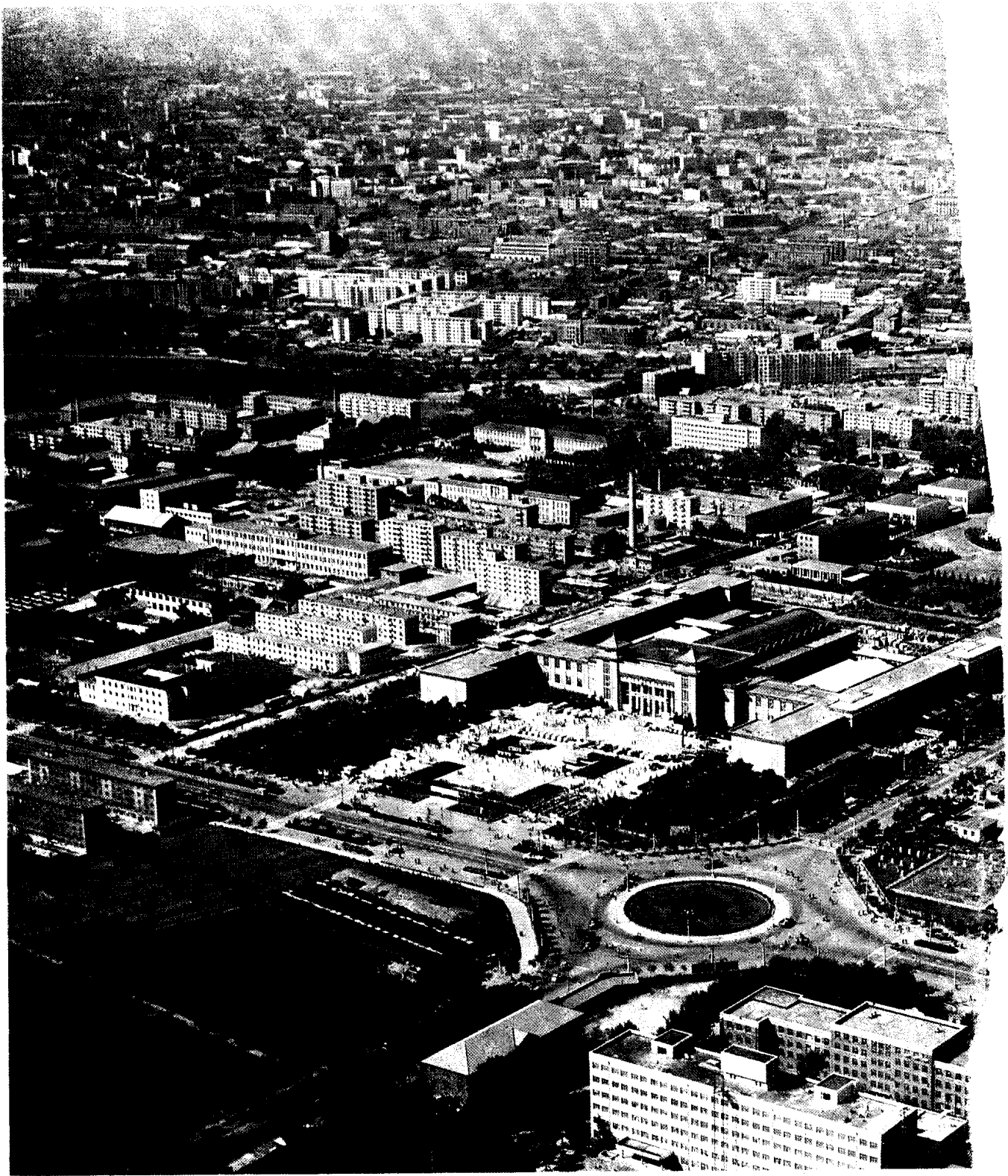


沈阳市行政区划图



沈阳市铁路线路示意图







沈阳市区鸟瞰



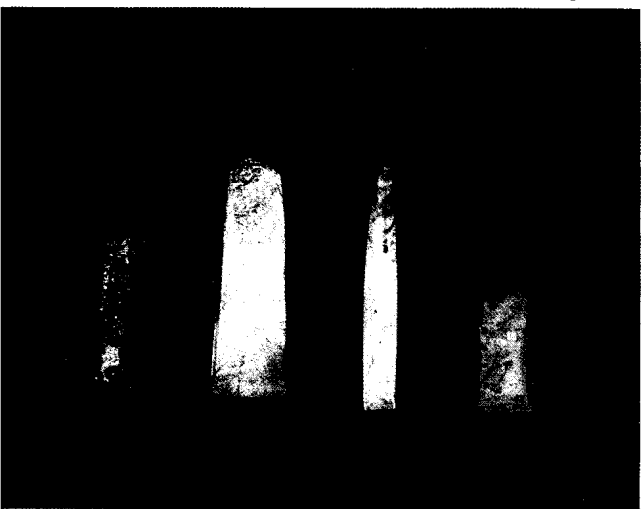
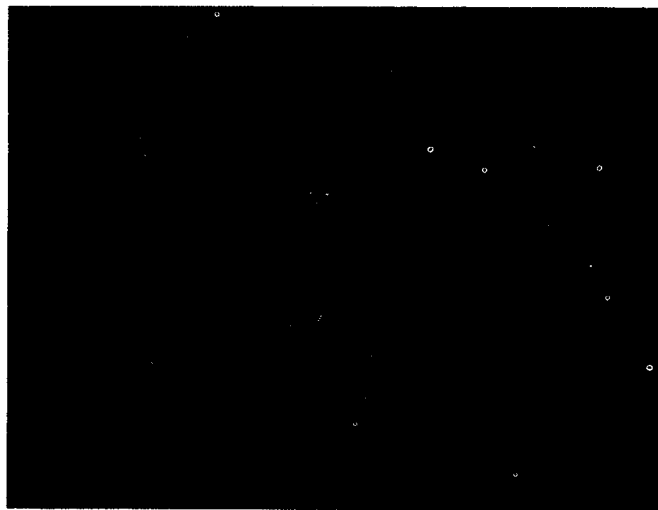
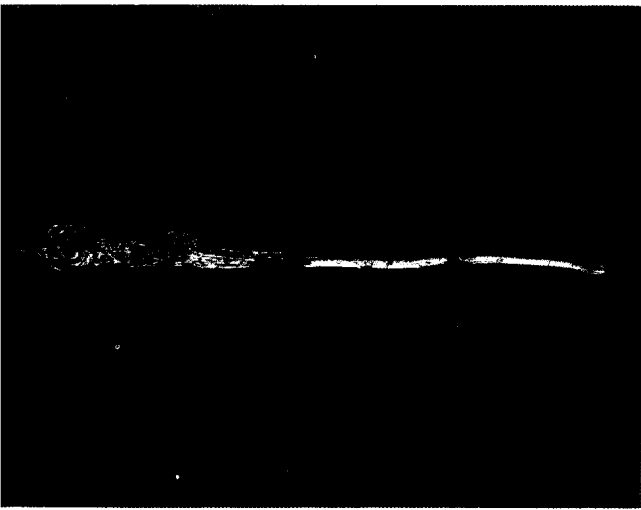
1. 新乐遗址——新石器时期文化遗址，距今七千二百多年。这是新建的展览厅

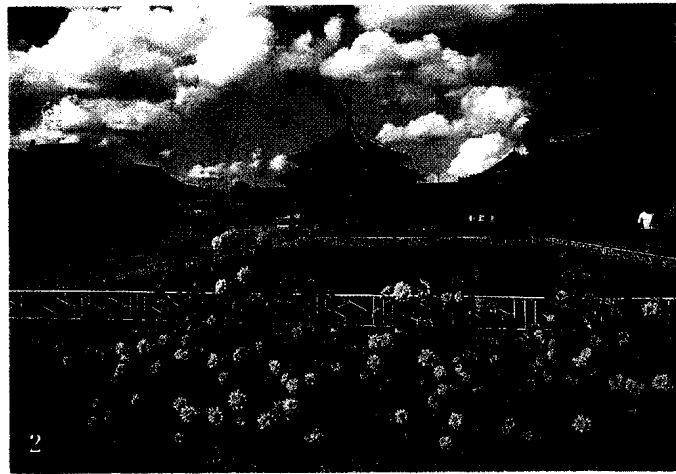
2. 木雕

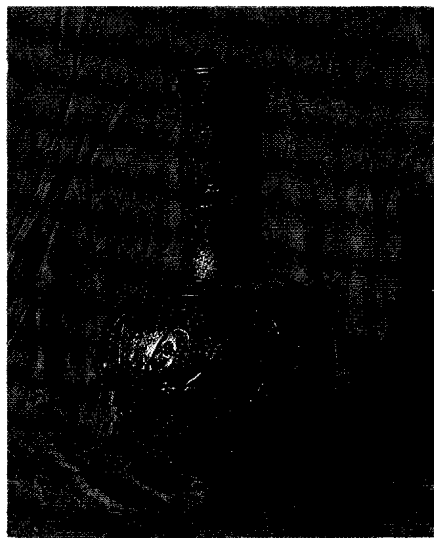
3. 煤精制品

4. 玉器

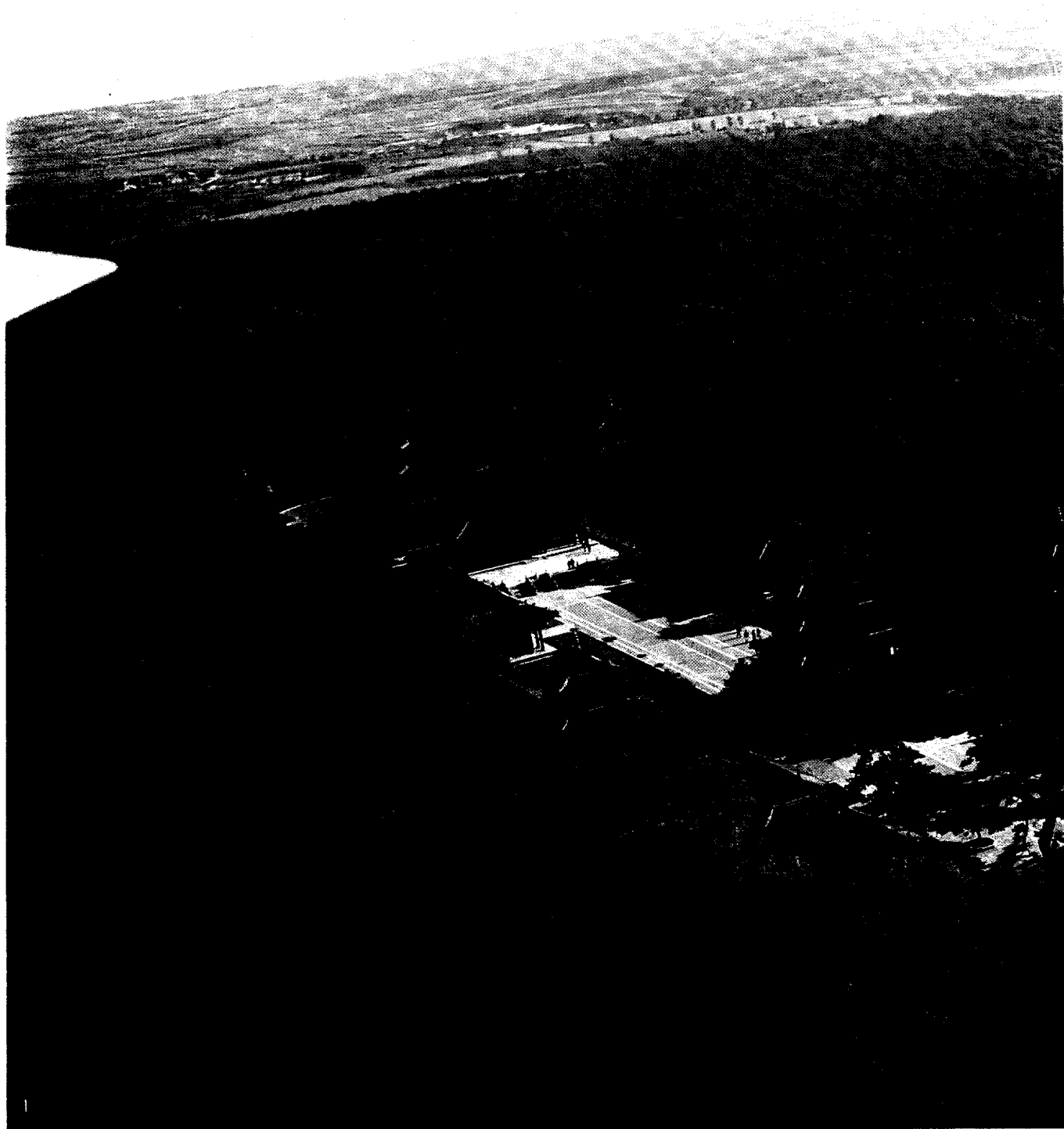
5. 陶器

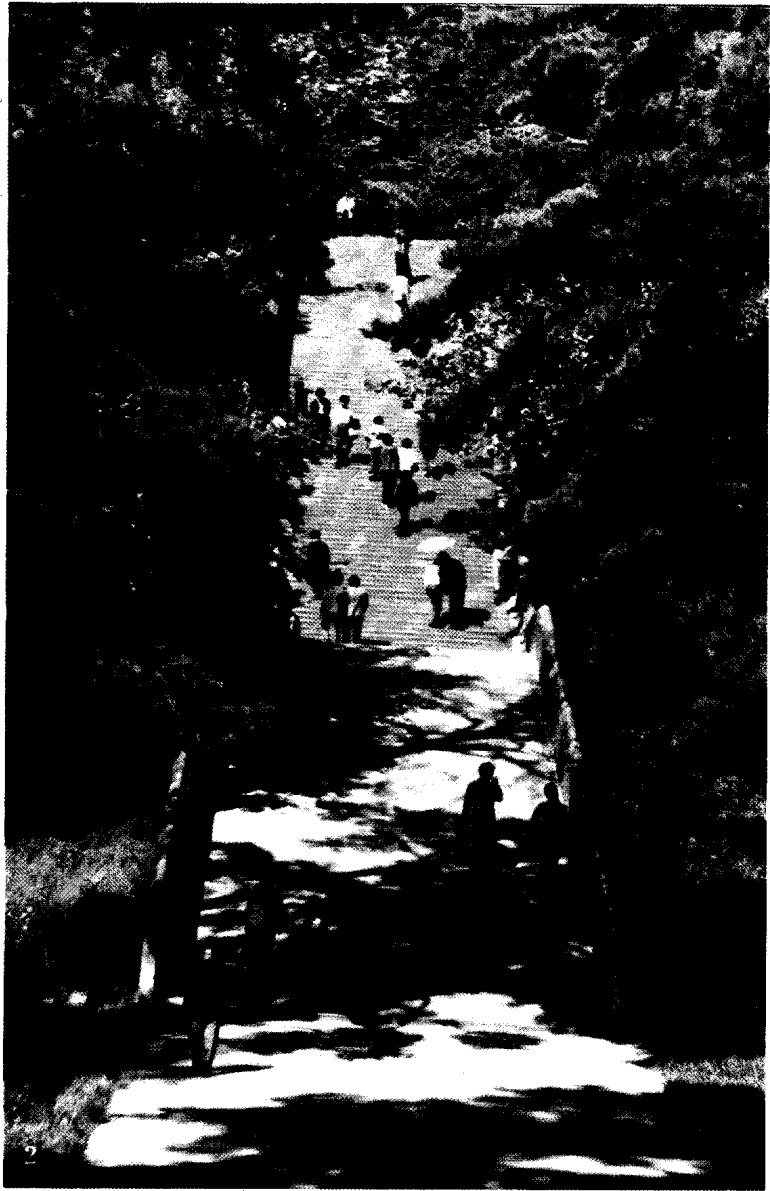
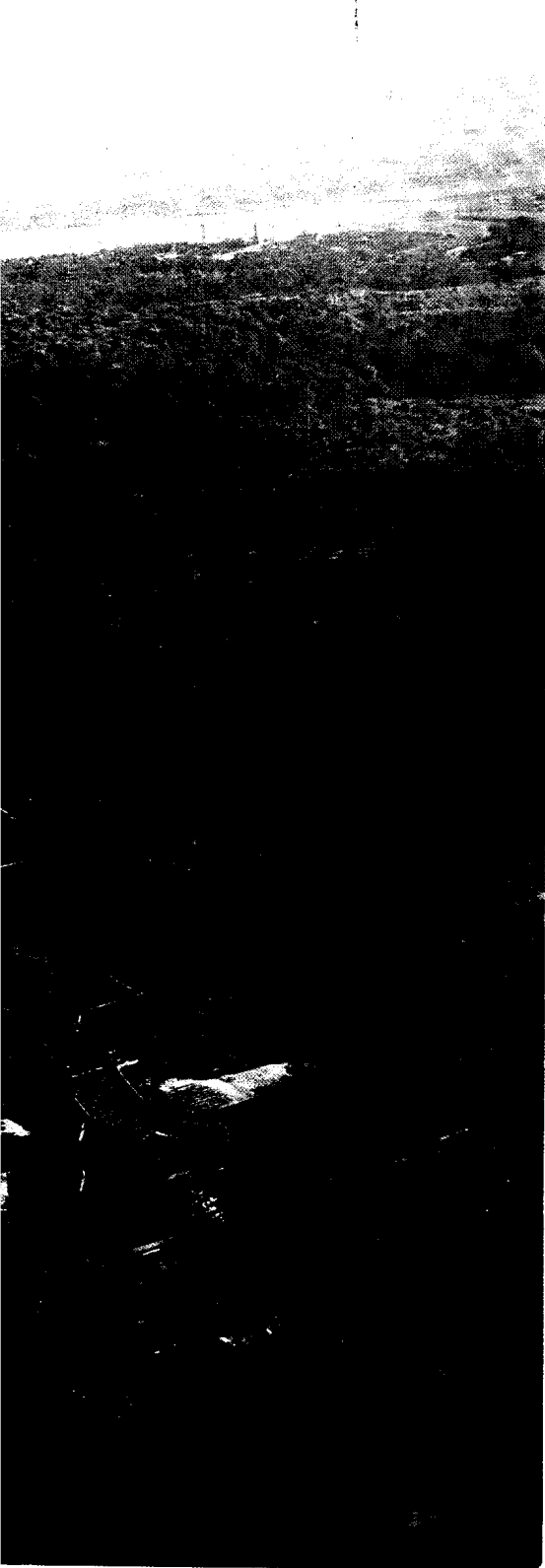






1. 沈阳故宫——清初皇宫，是全国现存的两座完整的宫殿之一
2. 大政殿
3. 凤凰楼
4. 竹荫西狻图
5. 掐丝珐琅方垒
6. 剔红天球瓶
7. 百鹿尊





1. 著名的清初关外三陵，有两座在沈阳。福陵(东陵)是清太祖努尔哈赤及其皇后的陵墓
2. 通向方城的一百单八磴





1. 福陵主体。正面为隆恩殿，左右为配殿，后为大明楼。 2. 碑楼 3.隆恩楼