



# SHOWHOUSES

## A DECORATORS' TOUR



TINA SKINNER



Schiffer

# Contents

<b>1</b>	<b>Foyers &amp; Hallways....4</b>	<b>7</b>	<b>Bedrooms....130</b>
<b>2</b>	<b>Studies &amp; Libraries....24</b>	<b>8</b>	<b>Children's Bedrooms....160</b>
<b>3</b>	<b>Living Rooms....40</b>	<b>9</b>	<b>Bathrooms....174</b>
<b>4</b>	<b>Sitting, Gathering, Keeping....68</b>	<b>10</b>	<b>Special Purpose Spaces....188</b>
<b>5</b>	<b>Kitchens....92</b>	<b>11</b>	<b>Master Suites....228</b>
<b>6</b>	<b>Dining Rooms....110</b>		<b>Contributors:....246</b>
			Designers Showhouses Photographers Decorative Painters

## Introduction

Welcome to the land where interior designers play and leagues of volunteers toil – the Decorator Showhouse. These events are held around the nation, hosted by loyal volunteers dedicated to helping expand hospitals, fund public art organizations, sustain symphony orchestras, and raise funds for other noble causes.

A showhouse event is a monumental undertaking, requiring hundreds of volunteer man hours and buoyed upon boundless enthusiasm. The result is usually a historic home, repurposed for the cause, worked over by decorators and craftsmen, then trampled through by hordes for a few brief weeks before being disassembled and locked away from public view.

The purpose of this book is to preserve those noble efforts and, more than anything, to bring the creative genius and the endless ideas to the eyes of even more individuals. So if you haven't made it to one of Long Island's wonderful Mansions & Millionaire's showcase events, or traveled to the tip of the Jersey Shore for a Cape May classic, here's your opportunity for a glimpse. Showhouses from New England to California are featured, and the variety in between is astounding. Enjoy!

# Showhouses 1

## *A Decorators' Tour*



Tina Skinner



常州大学图书馆  
藏书章



*Herb  
Publishing Co.*

4880 Lower Valley Road, Atglen, Pa 19310

**Other Schiffer Books by  
Tina Skinner**

*Showhouse Review: An  
Exposé of Interior  
Decorating Events.*  
ISBN: 9780764328640.  
\$44.95

**Other Schiffer Books  
on Related Subjects**

*California Revival: Vin-  
tage Decor for Today's  
Homes.* Carole Coates  
& Annie Dietz. ISBN:  
0764326356. \$49.95

*Decorator Show Hous-  
es.* Tina Skinner,  
Melissa Cardona, &  
Nancy Ottino. ISBN:  
0764320513. \$44.95

*Designer Showcase: In-  
terior Design at its  
Best.* Melissa Car-  
dona and Nathaniel  
Wolfgang-Price. ISBN:  
0764323989. \$44.95

*Inspired High-End Interior  
Design.* Shane Reilly.  
ISBN: 0764324993.  
\$65

Schiffer Books are available at special discounts for bulk purchases for sales promotions or premiums. Special editions, including personalized covers, corporate imprints, and excerpts can be created in large quantities for special needs. For more information contact the publisher:

Published by Schiffer Publishing Ltd.

4880 Lower Valley Road

Atglen, PA 19310

Phone: (610) 593-1777; Fax: (610) 593-2002

E-mail: [Info@schifferbooks.com](mailto:Info@schifferbooks.com)

For the largest selection of fine reference books on this and related subjects, please visit our web site at **[www.schifferbooks.com](http://www.schifferbooks.com)**

We are always looking for people to write books on new and related subjects. If you have an idea for a book please contact us at the above address.

This book may be purchased from the publisher.

Include \$5.00 for shipping.

Please try your bookstore first.

You may write for a free catalog.

In Europe, Schiffer books are distributed by

Bushwood Books

6 Marksbury Ave.

Kew Gardens

Surrey TW9 4JF England

Phone: 44 (0) 20 8392 8585; Fax: 44 (0) 20 8392 9876

E-mail: [info@bushwoodbooks.co.uk](mailto:info@bushwoodbooks.co.uk)

Website: [www.bushwoodbooks.co.uk](http://www.bushwoodbooks.co.uk)

Copyright © 2011 by Schiffer Publishing, Ltd.

Library of Congress Control Number: 2011921121

All rights reserved. No part of this work may be reproduced or used in any form or by any means—graphic, electronic, or mechanical, including photocopying or information storage and retrieval systems—without written permission from the publisher.

The scanning, uploading and distribution of this book or any part thereof via the Internet or via any other means without the permission of the publisher is illegal and punishable by law. Please purchase only authorized editions and do not participate in or encourage the electronic piracy of copyrighted materials.

"Schiffer," "Schiffer Publishing Ltd. & Design," and the "Design of pen and ink well" are registered trademarks of Schiffer Publishing Ltd.

Designed by RoS

Type set in University Roman Bd BT/Zurich BT

ISBN: 978-0-7643-3272-2

Printed in China

# Contents

<b>1</b>	<b>Foyers &amp; Hallways....4</b>	<b>7</b>	<b>Bedrooms....130</b>
<b>2</b>	<b>Studies &amp; Libraries....24</b>	<b>8</b>	<b>Children's Bedrooms....160</b>
<b>3</b>	<b>Living Rooms....40</b>	<b>9</b>	<b>Bathrooms....174</b>
<b>4</b>	<b>Sitting, Gathering, Keeping....68</b>	<b>10</b>	<b>Special Purpose Spaces....188</b>
<b>5</b>	<b>Kitchens....92</b>	<b>11</b>	<b>Master Suites....228</b>
<b>6</b>	<b>Dining Rooms....110</b>		<b>Contributors:....246</b>
			Designers Showhouses Photographers Decorative Painters

## Introduction

Welcome to the land where interior designers play and leagues of volunteers toil – the Decorator Showhouse. These events are held around the nation, hosted by loyal volunteers dedicated to helping expand hospitals, fund public art organizations, sustain symphony orchestras, and raise funds for other noble causes.

A showhouse event is a monumental undertaking, requiring hundreds of volunteer man hours and buoyed upon boundless enthusiasm. The result is usually a historic home, repurposed for the cause, worked over by decorators and craftsmen, then trampled through by hordes for a few brief weeks before being disassembled and locked away from public view.

The purpose of this book is to preserve those noble efforts and, more than anything, to bring the creative genius and the endless ideas to the eyes of even more individuals. So if you haven't made it to one of Long Island's wonderful Mansions & Millionaire's showcase events, or traveled to the tip of the Jersey Shore for a Cape May classic, here's your opportunity for a glimpse. Showhouses from New England to California are featured, and the variety in between is astounding. Enjoy!

# Chapter



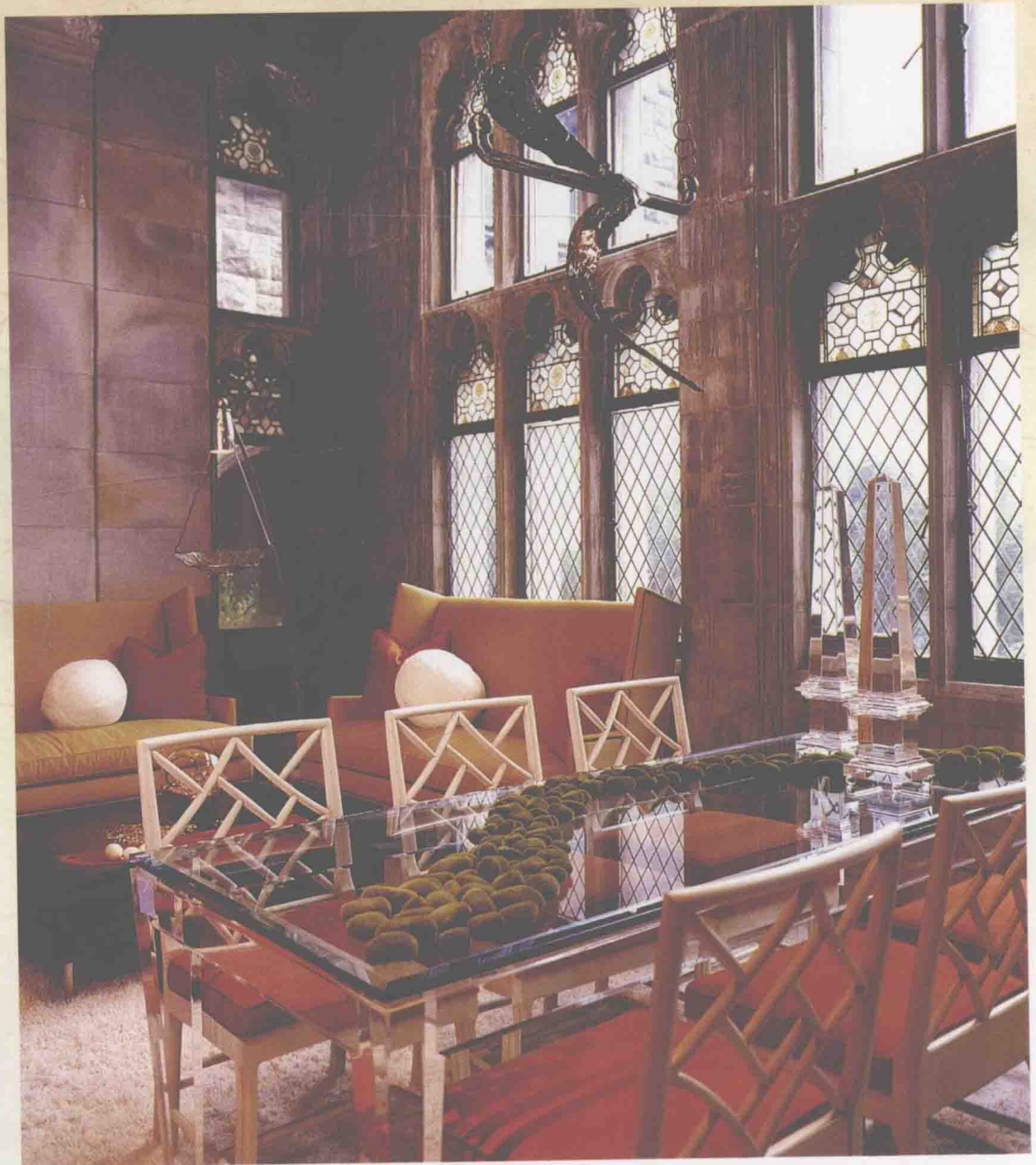


*Foyers & Hallways*

# Great Hall

Mansions & Millionaires Designers Showcase™  
Baltimore Design Group  
Ivy D Photography

*A castle keep gets a dramatic update, with contemporary furnishings and splashes of bold color. Stone walls are summer-ized by garden colors.*





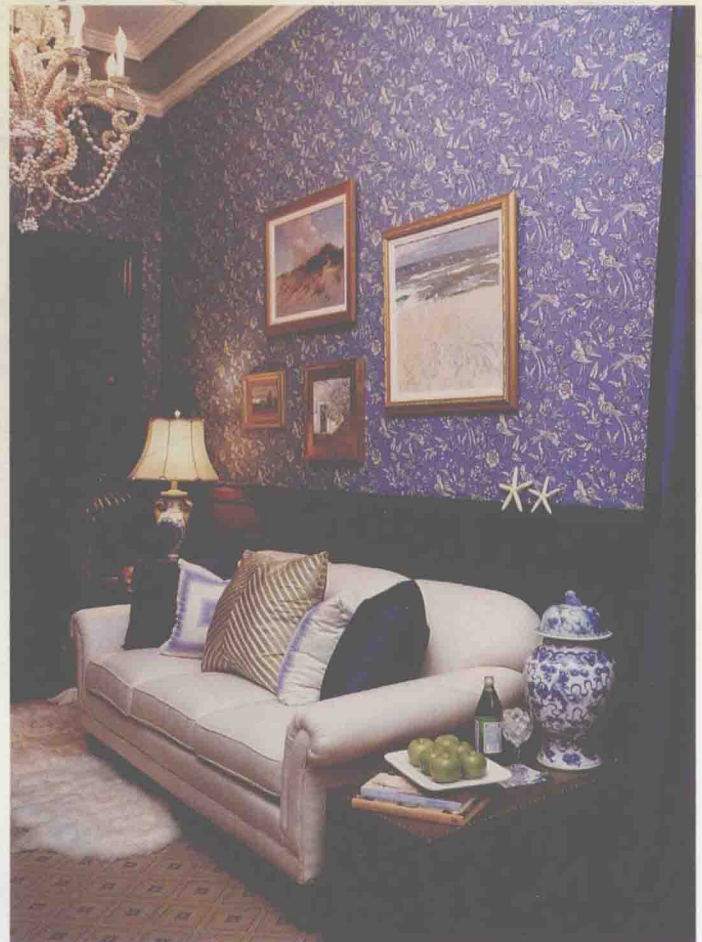
# A Seaside Corridor

Mansions & Millionaires Designers Showcase™

Catherine Deshler Interior Design

Ivy D Photography

*Shimmering silk taffeta drapes and gilded frames add a Hollywood luster to this living space. Seashells encrust the chandelier and starfish add punctuation, and a reminder that this is a seaside escape.*



# Art Excursion

Cape May's Designer Showhouse

Pedro Rodriguez Interiors

Photography by John Armich

*A sun porch gets an artful uplift with a geometric floor mural and funky black furnishings.*



## Parlor Room

Mansions & Millionaires Designers Showcase™  
Billy Ceglia Designs, LLC  
Ivy D Photography

*A folding screen insulates an inside wall, adding castle motif to a space that would have been fitting for grand receptions in days gone by. Here it is partitioned into conversation pits and comfortable places to escape with a book.*



# Patterned Passage

Vanguard Designer Showhouse  
Arthur Fowler of Charlton Studios  
Randall Perry Photography

*Reds and gold  
add warmth to  
a lengthy foyer,  
trimmed in rich  
woodwork. A  
repeating floor  
pattern is mirrored  
in wallpaper  
impressed with a  
foliage texture.*



# Cloistered Colonnade

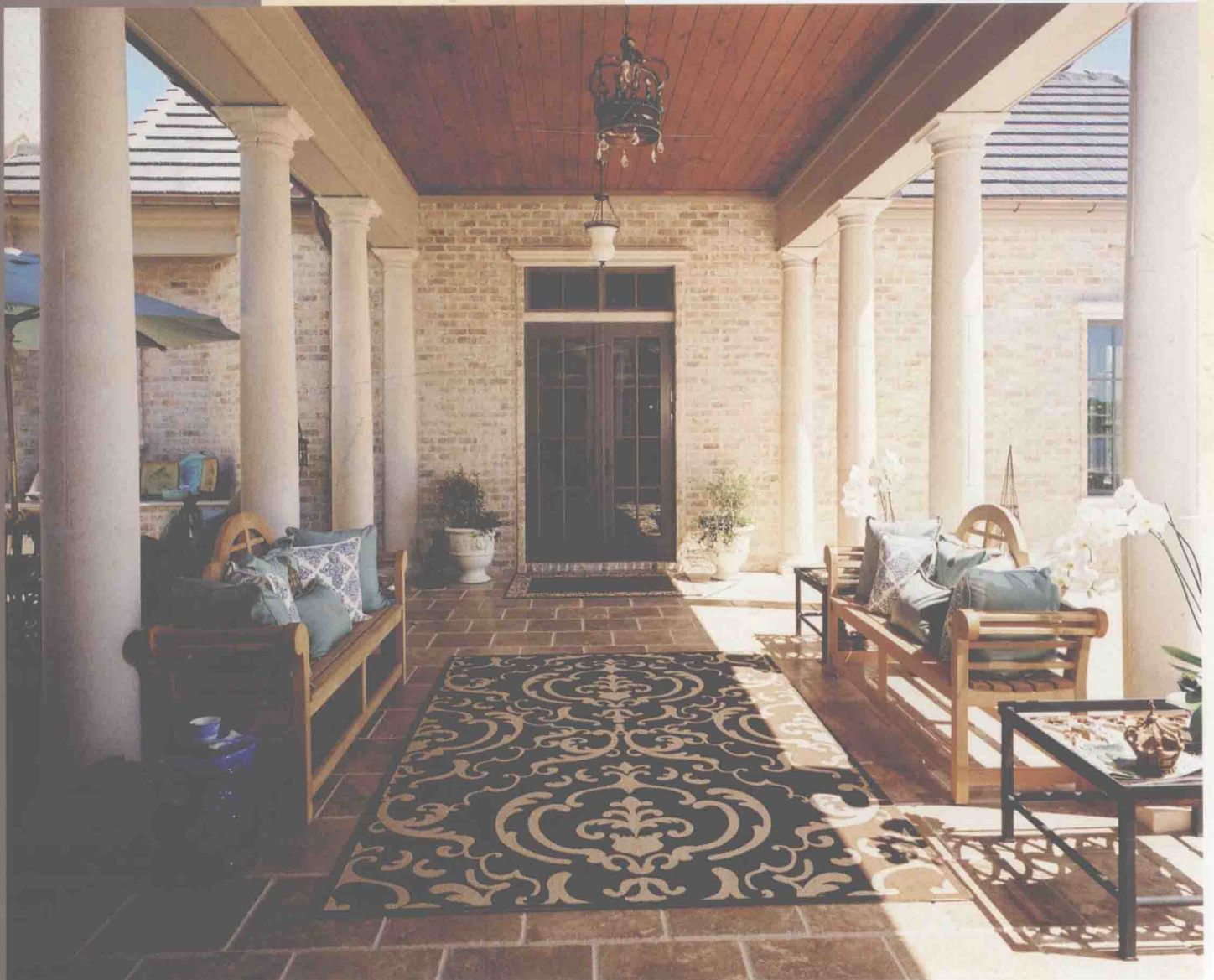
Jacksonville Symphony Guild-Designer

Showhouse & Garden

Joanne Rumney of Design Loft Interiors

Photography by Bob Pearce of Chelsea Photographic

*A passageway gives pause, with pillowed benches that beckon one to stop and admire the day, or perhaps the fine lighting. An outdoor kitchen area provides sustenance, while the fireplace adds warmth to an evening gathering.*



# Forest Path

Vanguard Designer Showhouse  
Jae Y. Schalekamp of MIN Studio  
Photographer: Randall Perry

*Wall murals imitate a waterfall and forest on this stair and landing, blending with muted colors on wall and window for a double-take effect. The cascading waterfall exudes the energy of motion, while falling leaves create an intimate and meditative mood.*



## Garden Entry

Lane Estate Showhouse  
Eva & You Interior Design  
Ivy D Photography

*Latticework  
makes an entry  
foyer feel exterior,  
along with wicker  
furnishings.*



