



# *Diseases of the* **KIDNEY**

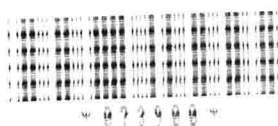
EDITED BY

*Maurice B. Strauss, M.D.*

*Professor of Medicine, Boston University School of Medicine; Lecturer in Medicine,  
Tufts University School of Medicine and Harvard Medical School;  
Chief of Medical Service, Boston Veterans Administration Hospital, Boston*

*Louis G. Welt, M.D.*

*Professor of Medicine, University of North Carolina School of Medicine;  
Attending Physician, North Carolina Memorial Hospital, Chapel Hill*



*43 Contributors*

*J. & A. Churchill Ltd.*  
*104 Gloucester Place, W.1, London*



*Copyright © 1963 by Maurice B. Strauss and Louis G. Welt*

*All rights reserved. No part of this book may be reproduced in any form  
without written permission from the publisher.*

*Library of Congress catalog card no. 63-21350*

*First Edition*

*Published in Great Britain by J. & A. Churchill Ltd., London*

*Printed in the United States of America*

## *Contributors*

*Robert W. Berliner, M.D.*

Director of Intramural Research, National Heart Institute, Bethesda, Maryland

*Neal S. Bricker, M.D.*

Associate Professor of Medicine and Director, Renal Division, Washington University School of Medicine, St. Louis, Missouri; Established Investigator, American Heart Association

*Maurice B. Burg, M.D.*

Member, Senior Research Staff, Section of Kidney and Electrolyte Metabolism, National Heart Institute, Bethesda, Maryland

*Norman W. Carter, M.D.*

Assistant Professor of Internal Medicine, The University of Texas Southwestern Medical School, Dallas, Texas

*O. Z. Dalgaard, M.D.*

Senior Registrar, Medical Department III, Blegdamshospitalet, Copenhagen, Denmark

*Eleanor Dempsey, M.A.*

Massachusetts General Hospital, Boston, Massachusetts

*Franklin H. Epstein, M.D.*

Associate Professor of Medicine, Yale University School of Medicine, New Haven, Connecticut

*Anne P. Forbes, M.D.*

Assistant Clinical Professor of Medicine, Harvard Medical School, Boston, Massachusetts

*Lawrence R. Freedman, M.D.*

Assistant Professor of Medicine, Yale University School of Medicine, New Haven, Connecticut

*J. Hartwell Harrison, M.D.*

Clinical Professor of Genitourinary Surgery, Harvard Medical School; Chief of Urology, Peter Bent Brigham Hospital, Boston, Massachusetts

*A. McGehee Harvey, M.D.*

Professor and Director of the Department of Medicine, The Johns Hopkins University School of Medicine; Physician-in-Chief, The Johns Hopkins Hospital, Baltimore, Maryland

*Joseph M. Hayman, Jr., M.D.*

Dean, Tufts University School of Medicine, Boston, Massachusetts

*R. H. Heptinstall, M.D.*

Professor of Pathology, The Johns Hopkins University, Baltimore, Maryland

*Walter Hollander, Jr., M.D.*

Associate Professor of Medicine and Director, Clinical Research Unit, University of North Carolina School of Medicine; Associate Attending Physician, North Carolina Memorial Hospital, Chapel Hill, North Carolina

*A. M. Joekes, M.A., B.M., M.R.C.P.*

Senior Lecturer, Institute of Urology, London, England

*Jerome P. Kassirer, M.D.*

Instructor in Medicine, Tufts University School of Medicine; Assistant Physician, Pratt Clinic-New England Center Hospital, Boston, Massachusetts

*Norman G. Levinsky, M.D.*

Assistant Professor of Medicine, Boston University School of Medicine, Boston, Massachusetts

*Reginald William Luxton, M.D.*

Clinical Instructor in Medicine, University of Manchester, Manchester, England

*Carl B. Lyle, M.D.*

Instructor, Department of Medicine, University of North Carolina School of Medicine; Assistant Attending Physician, North Carolina Memorial Hospital, Chapel Hill, North Carolina

*Alexander Marble, M.D.*

Assistant Clinical Professor of Medicine, Harvard Medical School; Physician, Joslin Clinic and New England Deaconess Hospital; Senior Associate in Medicine, Peter Bent Brigham Hospital, Boston, Massachusetts

*Joseph F. A. McManus, M.D.*

Professor of Pathology, Experimental Program of Medical Education, Indiana University, Bloomington, Indiana

*John P. Merrill, M.D.*

Associate Clinical Professor of Medicine, Harvard Medical School; Physician and Chief, Cardiorenal Section, Peter Bent Brigham Hospital, Boston, Massachusetts; Investigator of the Howard Hughes Medical Institute

*Malcolm D. Milne, M.D., F.R.C.P.*

Professor of Medicine, Westminster Hospital Medical School, London, England

*Olle Olsson, M.D.*

Professor of Diagnostic Radiology, University of Lund School of Medicine; Director, Department of Diagnostic Radiology, University Hospital, Lund, Sweden

*Jack Orloff, M.D.*

Chief of the Laboratory of Kidney and Electrolyte Metabolism, National Heart Institute, Bethesda, Maryland

*Solomon Papper, M.D.*

Professor and Chairman, Department of Medicine, University of New Mexico School of Medicine, Albuquerque, New Mexico

*Gerald T. Perkoff, M.D.*

Associate Professor of Medicine, University of Utah College of Medicine; Chief of Medical Service, Salt Lake City Veterans Administration Hospital, Salt Lake City, Utah

*John H. Peters, M.D.*

Research Associate in Bacteriology and Immunology, Harvard Medical School, Boston, Massachusetts; Advanced Research Fellow, American Heart Association

*Floyd C. Rector, Jr., M.D.*

Assistant Professor of Internal Medicine,  
The University of Texas Southwestern Medical School, Dallas, Texas

*Arnold S. Relman, M.D.*

Research Professor of Medicine, Boston  
University School of Medicine, Boston, Massachusetts

*Johannes A. G. Rhodin, M.D.*

Professor of Anatomy, New York University  
College of Medicine, New York, New York

*George E. Schreiner, M.D.*

Professor of Medicine, Georgetown University School of Medicine; Director, Renal and Electrolyte Division, and Director, Clinical Study Unit, Georgetown University Hospital, Washington, D.C.

*William B. Schwartz, M.D.*

Professor of Medicine, Tufts University School of Medicine; Senior Physician, Pratt Clinic-New England Center Hospital, Boston, Massachusetts

*Donald W. Seldin, M.D.*

Professor and Chairman of the Department of Internal Medicine, The University of Texas Southwestern Medical School, Dallas, Texas

*Ethan A. H. Sims, M.D.*

Associate Professor of Medicine and Clinical Biochemistry and Director, Metabolic Unit, Department of Medicine, College of Medicine, University of Vermont; Attending Physician, Mary Fletcher Hospital, Associate Attending Physician, DeGoesbriand Memorial Hospital, Burlington, Vermont

*Maurice B. Strauss, M.D.*

Professor of Medicine, Boston University School of Medicine; Lecturer in Medicine, Tufts University School of Medicine, Harvard

Medical School; Chief of Medical Service, Boston Veterans Administration Hospital, Boston, Massachusetts

*John H. Talbott, M.D., D.Sc. (Hon.)*

Editor of The Journal of The American Medical Association, Chicago, Illinois

*Kornel L. Terplan, M.D.*

Professor and Head of the Department of Pathology, University of Buffalo School of Medicine, Buffalo, New York

*W. Gordon Walker, M.D.*

Assistant Professor of Medicine, The Johns Hopkins University School of Medicine; Physician, The Johns Hopkins Hospital, Baltimore, Maryland

*Herman Wechsler, M.D.*

Attending Urologist, Research Unit for Genito-Urinary Tuberculosis, Bronx Veterans Administration Hospital, Bronx, New York; Clinical Assistant Professor of Urology, Albert Einstein College of Medicine, New York, New York

*Louis G. Welt, M.D.*

Professor of Medicine, University of North Carolina School of Medicine; Attending Physician, North Carolina Memorial Hospital, Chapel Hill, North Carolina

*T. Franklin Williams, M.D.*

Associate Professor of Medicine, University of North Carolina School of Medicine; Associate Attending Physician, North Carolina Memorial Hospital, Chapel Hill, North Carolina

*John H. Yardley, M.D.*

Assistant Professor of Pathology, The Johns Hopkins University School of Medicine; Pathologist, The Johns Hopkins Hospital, Baltimore, Maryland

## *Preface*

*The need for a critical and comprehensive clinical text dealing with diseases of the kidney has been manifest for many years. The growth of knowledge in this area in recent decades has been stupendous, and excellent monographs on one or another topic within the field have been published, but no single volume to which the student and clinician could turn for complete coverage has been available.*

That this volume is multi-authored hardly requires comment. The day of Francis Bacon, when one man could embrace all human knowledge, is long past. Even if one author could encompass all of renal disease, the Herculean nature of the task would require so many years that the first chapter would be outdated long before the last was complete.

The editors have been most fortunate in obtaining the cooperation of a distinguished

group of authorities who have labored long and assiduously in the compilation of this volume. We have thanked them individually and privately for their contributions. Now we wish to spread our appreciation on the written record. This is their book, not ours. The excellence of their individual chapters has made our editorial task light. We are profoundly grateful to them, and we know that both students of renal disease and those charged with the care of patients will share our gratitude that this vast amount of learning is now available in a single, if weighty, volume.

Finally we wish to express our appreciation to Miss Margaret F. Mutch, of Little, Brown and Company, who has succeeded in converting a multi-authored text into a cohesive whole without sacrificing the individual style of the separate contributors.

*Boston  
Chapel Hill*

M. B. S.  
L. G. W.

## *Contents*

Contributors *v*  
Preface *ix*

### *1 Structure of the Kidney* 1

JOHANNES A. G. RHODIN

Glomerulus 2  
Peritubular capillaries 12  
Tubules 13

### *2 Outline of Renal Physiology* 30

ROBERT W. BERLINER

Historical survey 30  
General nature of the process of urine formation 31  
Glomerular filtration 32  
Tubular reabsorption 36  
Tubular secretion 41  
Reabsorption and excretion of water 46  
Reabsorption and excretion of sodium and chloride 56  
Excretion of potassium 60  
Regulation of acid-base balance 61  
Excretion of urea 70  
Non-ionic diffusion 73



### 3 *Clinical Examination of Renal Function* 80

ARNOLD S. RELMAN AND NORMAN G. LEVINSKY

- Proteinuria 80
- Urine sediment 88
- Clinical tests of renal function 97
- Tests of concentrating and diluting function 105
- Phenolsulfonphthalein excretion 110
- Correlation of clinical function tests 113

### 4 *Renal Radiography* 123

OLLE OLSSON

- Examination principles 123
- Examination methods 124
- Anomalies 135
- Stone 138
- Tumor 142
- Renal cyst 145
- Tuberculosis 146
- Urinary tract dilatation 149
- Trauma 154
- Renal carbuncle, abscess, perinephritis 155
- Primary vascular changes 157
- Medullary sponge kidney 159
- Gas in the urinary pathways 161
- Generalized renal disease 161
- Compensatory renal hypertrophy 172

### 5 *Consequences of Renal Failure and Their Management* 173

DONALD W. SELDIN, NORMAN W. CARTER AND FLOYD C. RECTOR, JR.

- Nephron mass and nephron function 173
- Failure of renal function: electrolyte derangements 178
- Uremia 194
- Treatment of renal insufficiency and renal failure 198

### 6 *Dialytic Methods of Treatment* 218

JOHN P. MERRILL

- Development of the artificial kidney 219
- Technic 221
- Indications for use of the artificial kidney 222
- Complications of dialysis 224
- Contraindications to use of the artificial kidney 224
- Dialysis in patients with chronic renal failure 225
- Special indications for the use of the artificial kidney 226
- Other forms of dialysis 227

## 7 *Pathogenesis of Glomerulonephritis* 233

JOHN H. PETERS

- Experimental nephritis 234
- Antigenicity of kidney and autoantibodies 236
- Foreign protein nephritis 238
- Microbiologic aspects of nephritis 239
- Complement and immune mechanisms of tissue damage 242
- Immune phenomena in human nephritis 243

## 8 *Renal Pathology of Acute Glomerulonephritis* 255

JOSEPH F. A. MCMANUS

- Terminology 255
- Basic anatomy 255
- Pathology of the glomerulus 256
- Pathology of the tubules 259
- Progression of acute glomerulonephritis 261

## 9 *Clinical Aspects of Acute Glomerulonephritis* 268

WILLIAM B. SCHWARTZ AND JEROME P. KASSIRER

- Epidemiology 269
- Incidence 270
- Site of preceding infection 271
- Clinical immunology 271
- Characteristics of the latent period 273
- Clinical features 273
- Renal function and electrolyte disturbances 278
- Laboratory data 280
- Renal histology in relation to clinical course 283
- Glomerulonephritis following infections not of hemolytic streptococcal origin 284
- Clinical course and prognosis 286
- Recurrences 288
- Differential diagnosis 289
- Prophylaxis 292
- Treatment 293

## 10 *Focal Glomerulonephritis* 306

R. H. HEPTINSTALL AND A. M. JOEKES

- Historical 307
- Focal glomerulonephritis as a part or a complication of other diseases 309
- Renal biopsy studies in focal glomerulonephritis 310
- Clinical features 311
- Pathology 313
- Treatment 314
- Nature of focal glomerulonephritis 316

11 *Clinical Aspects of Chronic Glomerulonephritis* 320

ARNOLD S. RELMAN

- Introduction and definition 320
- Incidence 320
- Pathogenesis and classification 322
- Symptoms and signs 325
- Laboratory findings 325
- Prognosis and natural history 326
- Differential diagnosis 328
- Treatment 331

12    *The Nephrotic Syndrome* 335

GEORGE E. SCHREINER

- Definition 335
- Etiology 335
- Nature of the lesion 338
- Renal biopsy in the nephrotic syndrome 341
- Immunologic considerations 345
- Pathologic physiology 347
- Experimental nephrosis 364
- Clinical features of the nephrotic syndrome 368
- Special forms of the nephrotic syndrome 375
- Treatment and prognosis 393
- Specific therapy 397

13 *Acute Renal Failure* 445

JOHN P. MERRILL

- Prerenal failure 446
- Postrenal failure 448
- Renal failure 450
- Clinical course and treatment 456
- Caloric intake 459
- Cardiovascular system 460
- Gastrointestinal tract 461
- Central nervous system 461
- Infection 461
- Hematologic considerations 462
- Diuresis 463

14 *Pyelonephritis and Urinary Tract Infection* 469

LAWRENCE R. FREEDMAN

- |                         |     |
|-------------------------|-----|
| Chronic pyelonephritis  | 469 |
| Urinary tract infection | 481 |

## 15 *Nephrosclerosis* 501

SOLOMON PAPPER

- Nephrosclerosis 501
- Arteriosclerosis (Atherosclerosis) 501
- Arteriolar nephrosclerosis 502
- Malignant nephrosclerosis 513

## 16 *Renal Cortical Necrosis, Renal Infarction, and Hypertension Due to Renal Vascular Disease* 526

T. FRANKLIN WILLIAMS

- Renal cortical necrosis 526
- Renal infarction 539
- Hypertension due to renal vascular disease 543

## 17 *Renal Involvement in Myeloma, Amyloidosis, Systemic Lupus Erythematosus and Other Disorders of Connective Tissue* 575

A. MCGEE HARVEY, W. GORDON WALKER AND JOHN H. YARDLEY

- Myelomatosis 575
- Amyloidosis 582
- Systemic lupus erythematosus 589
- Polyarteritis (Periarteritis nodosa) 602
- Thrombotic thrombocytopenic purpura 608
- Primary systemic sclerosis (Scleroderma) 610
- Nephritis associated with Schönlein-Henoch purpura and allied disorders 613

## 18 *Diabetic Nephropathy* 620

ALEXANDER MARBLE

- Definition 621
- Clinical course 623
- Histology 624
- Causes and prevention 627
- Treatment 629

## 19 *The Kidney in Gout* 633

JOHN H. TALBOTT AND KORNEI L. TERPLAN

- History 633
- Renal exchange of urate 634
- Pathogenesis of the increased concentration of urate in body fluids 635
- Laboratory evidence of renal dysfunction in patients with gout 636
- Clinical and pathologic observations 637

Mild clinical gout	640
Moderate clinical gout	640
Severe tophaceous gout	640
Blood dyscrasias	647
Recapitulation of histologic findings	647
Pharmacology and treatment	648

## 20 *Nephropathy of Hypercalcemia* 652

FRANKLIN H. EPSTEIN

Effects of calcium on renal function	652
Effects of calcium on renal structure	654
Clinical features of calcium nephropathy	657
Acute hypercalcemic crisis	660
Hyperthyroidism	661
Milk-alkali syndrome	663
Sarcoidosis	665
Hyperparathyroidism	665
Hypercalcemia in neoplastic disease	666
Idiopathic hypercalcemia	667
Vitamin D intoxication	667

## 21 *Nephropathy of Potassium Depletion* 675

WALTER HOLLANDER, JR.

Pathogenesis	675
Renal compositional changes	678
Structural changes	679
Pyelonephritis	688
Renal physiology	689
Quantitative relationships	698
Relation of alkalosis to renal abnormalities	699
Polydipsia in potassium depletion	700
Prevention and treatment	701

## 22 *Nephrolithiasis* 712

ANNE-P. FORBES AND ELEANOR DEMPSEY

Uric acid stone	714
Cystine stone	716
Calcium stone	717
Calcium oxalate stone	717
Urinary oxalate	718
Hyperoxaluria	718
Hypercalciuria	718
Hypercalciuria due to loss of bone	720
Hyperparathyroidism	720
Idiopathic hypercalciuria	721

- Hypocalcemic hypercalciuria 721
- Renal tubular acidosis 721
- Phytate therapy 722
- Phosphate stone 722

## 23 *Obstructive Nephropathy* 728

NEAL S. BRICKER

- Introduction 728
- Evaluation of renal function in the presence of obstructive nephropathy 730
- Physiology of the urinary tract 732
- Obstructing lesions of the urinary tract 734
- Pathology 737
- Pyelonephritis in obstructive nephropathy 738
- Mechanisms of nephron destruction 739
- Pathogenesis of hydronephrosis 740
- Effects of urinary tract obstruction on renal function 743
- Clinical manifestations of obstructive nephropathy 750
- Differential diagnosis 751
- Approach to therapy 752

## 24 *Effects of Ureteral Transplantation* 759

WILLIAM B. SCHWARTZ AND JEROME P. KASSIRER

- Cutaneous ureterostomy 759
- Ureterosigmoidostomy 760
- Ureteroileostomy 764

## 25 *Effects of Irradiation on the Kidney* 769

REGINALD WILLIAM LUXTON

- Clinical types of radiation nephritis 769
- Pathology 776
- Animal experiment and pathogenesis 780
- Diagnosis 782

## 26 *Renal Tubular Dysfunction* 786

MALCOLM D. MILNE

- Cause of renal tubular disorders 787
- Proximal tubular syndromes 789
- Specific disorders of amino acid transport 791
- Nonspecific hereditary disorders of amino acid transport 802
- Renal aminoaciduria 809
- Overflow aminoaciduria 811
- Renal glycosuria 813
- Disorders of phosphate transport 816
- Distal tubular syndromes 822

27 *The Kidney in Liver Disease* 841

SOLOMON PAPPER

- Acute infectious hepatitis 842
- Laennec's cirrhosis without ascites or edema ("compensated") 842
- Laennec's cirrhosis with ascites or edema ("decompensated") 843
- Renal failure in Laennec's cirrhosis 846

28 *The Kidney in Pregnancy* 853

ETHAN A. H. SIMS

- Anatomic changes of the urinary tract 853
- Renal function in normal pregnancy 854
- The kidney in pregnancy complicated by preeclampsia, eclampsia, hypertensive or renal disease 865
- Pheochromocytoma 884

29 *The Kidney in Sickle Cell Anemia* 894

LOUIS G. WELT AND CARL B. LYLE

- Renal pathology 895
- Renal hemodynamics 896
- Hematuria 896
- Renal concentrating ability 897
- Nephrotic syndrome 898
- Renal insufficiency 898

30 *Genetics in Renal Disease* 901

GERALD T. PERKOFF

- Current concepts of genes and gene action 901
- Some hereditary functional abnormalities of the kidney 902
- Three hereditary anatomic abnormalities of the kidney 904

31 *Polycystic Disease of the Kidneys* 907

O. Z. DALGAARD

- Definition and classification 907
- Other types of renal cysts 908
- Frequency of bilateral polycystic kidneys in adults 909
- Etiology and pathogenesis 910
- Inheritance 910
- Gross pathologic findings 911
- Diagnosis 912
- Clinical aspects 916
- Prognosis 923
- Surgical treatment in adults 926

- Special indications for operative intervention 929
- General measures of treatment 930
- Associated anomalies 930
- Bilateral polycystic kidneys in infants and children 933

## 32 *Cystic Disease of the Renal Medulla* 938

MAURICE B. STRAUSS

- Medullary cystic disease 938
- Sponge kidney 946
- Pathogenesis of cystic disease of the renal medulla 951

## 33 *Hereditary Chronic Nephritis* 953

GERALD T. PERKOFF

- Clinical manifestations and course of the disease 953
- Associated clinical findings 954
- Laboratory findings 954
- Pathologic anatomy 955
- Mechanism of inheritance 959

## 34 *Vasopressin-resistant Diabetes Insipidus* 961

JACK ORLOFF AND MAURICE B. BURG

- Physiologic considerations 961
- Pathogenesis 962
- Genetics 963
- Clinical aspects 963
- Diagnosis 964
- Differential diagnosis 964
- Therapy 965

## 35 *Congenital Malformations of the Kidney* 969

JOSEPH M. HAYMAN, JR.

- Embryology of the kidney 970
- Classification 971
- Congenital cysts 977

## 36 *Renal Tuberculosis* 980

HERMAN WECHSLER

- Incidence 980
- Pathology 980
- Diagnosis 982
- Symptoms 983
- Treatment 983



37	<i>Tumors of the Kidney</i>	988
J. HARTWELL HARRISON		
	Introduction	988
	Pathology and pathologic physiology	989
	Diagnosis	992
	Management	998
	 Index	 1007