

the leader of
Architecture

TOP ARCHITECTS

Middle East

BADILAND
KANTAR
ARCHITECTS.



UNIVERSAL
PUBLISHER & DISTRIBUTOR EST

the leader of
Architecture

TOP ARCHITECTS

Middle East



UNIVERSAL
PUBLISHER & DISTRIBUTOR EST.



UNIVERSAL
PUBLISHER & DISTRIBUTOR EST

TOP ARCHITECTS _ MIDDLE EAST

Publisher: UNIVERSAL Co. Publisher and Distributor

Managing Director: Fadi Moukanzah

This book is dedicated for my father Jamil Moukanzah

BEIRUT - LEBANON

P.O.Box 50137

Tel: 00961 1 293311

Fax: 00961 1 292645 - M.: 00961 70 442444

ABU DHABI - UNITED ARAB EMIRATES

P.O.Box 61183

Tel: 00971 2 6352874

Fax: 00971 2 6352873 - M.: 00971 50 5349011

Email: fadymou@universal-publisher.com

Designer: Amanda Chamoun

Second Edition 2012

All rights reserved. Not part of this publication may be reproduced, stored in or introduced into a retrieval system, or transmitted, in any form, or by any means (electronic, mechanical, photocopying recording or otherwise) without the prior written permission of the copyright owners.

Single Copy: US \$79

ISBN: 978-9953-467-68-9

CONTENTS

6	M.R. GROUP - LEBANON.	214	PIERRE DAGHER - LEBANON.
20	SPIRIT D GROUP - LEBANON.	232	RAMAHI ARCHITECTURE & ENGINEERING - U.A.E.
34	BK ARCHITECTS - LEBANON.	248	ACG - ABU DHABI - U.A.E.
60	FB ARCHITECTS - JORDAN.	272	JAFAR TUKAN - JORDAN.
76	PATENT CONSULTANT - ABU DHABI - U.A.E.	294	CHARLES HADIFE - LEBANON.
92	ALDARAH - JORDAN.	310	ERGA - LEBANON.
112	ISNAD - JORDAN.	326	ZAHA HADID - IRAQ.
130	NAGA ARCHITECTS - DUBAI - U.A.E.	330	JEAN NOUVEL.
146	ASAM - LEBANON.	334	STEVEN HOLL.
156	BLU - K.S.A.	338	RTKL.
170	WISSAM HAYEK - LEBANON.	344	NORMAN FOSTER.

the leader of
Architecture

TOP ARCHITECTS

Middle East

BADILAND
KANTAR
ARCHITECTS.



UNIVERSAL

此为试读, 需要完整PDF请访问: www.cn-shengbook.com DISTRIBUTER E.S.T

ISBN 978-9953-467-68-9



9 789953 467689



UNIVERSAL
PUBLISHER & DISTRIBUTOR EST

the leader of
Architecture

TOP ARCHITECTS

Middle East



UNIVERSAL
PUBLISHER & DISTRIBUTOR EST.



UNIVERSAL
PUBLISHER & DISTRIBUTOR EST

TOP ARCHITECTS _ MIDDLE EAST

Publisher: UNIVERSAL Co. Publisher and Distributor

Managing Director: Fadi Moukanzah

This book is dedicated for my father Jamil Moukanzah

BEIRUT - LEBANON

P.O.Box 50137

Tel: 00961 1 293311

Fax: 00961 1 292645 - M.: 00961 70 442444

ABU DHABI - UNITED ARAB EMIRATES

P.O.Box 61183

Tel: 00971 2 6352874

Fax: 00971 2 6352873 - M.: 00971 50 5349011

Email: fadymou@universal-publisher.com

Designer: Amanda Chamoun

Second Edition 2012

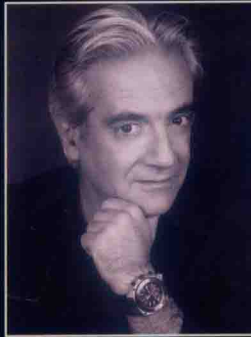
All rights reserved. Not part of this publication may be reproduced, stored in or introduced into a retrieval system, or transmitted, in any form, or by any means (electronic, mechanical, photocopying recording or otherwise) without the prior written permission of the copyright owners.

Single Copy: US \$79

ISBN: 978-9953-467-68-9

CONTENTS

6	M.R. GROUP - LEBANON.	214	PIERRE DAGHER - LEBANON.
20	SPIRIT D GROUP - LEBANON.	232	RAMAHI ARCHITECTURE & ENGINEERING - U.A.E.
34	BK ARCHITECTS - LEBANON.	248	ACG - ABU DHABI - U.A.E.
60	FB ARCHITECTS - JORDAN.	272	JAFAR TUKAN - JORDAN.
76	PATENT CONSULTANT - ABU DHABI - U.A.E.	294	CHARLES HADIFE - LEBANON.
92	ALDARAH - JORDAN.	310	ERGA - LEBANON.
112	ISNAD - JORDAN.	326	ZAHA HADID - IRAQ.
130	NAGA ARCHITECTS - DUBAI - U.A.E.	330	JEAN NOUVEL.
146	ASAM - LEBANON.	334	STEVEN HOLL.
156	BLU - K.S.A.	338	RTKL.
170	WISSAM HAYEK - LEBANON.	344	NORMAN FOSTER.



Nadi NAMMAR

MR Group - Managing Partner
www.mrgroup-architects.com

Graduated in 1985 from the "Ecole Speciale d'Architecture" in Paris with distinction.

Worked in the U.S.A. at W.A.T&G, one of the biggest international architectural firms.

Returned to Lebanon in 2000 where he established "MR Group", Management & Resources Group, a talented & dedicated architectural firm offering a full range of innovative and sustainable architecture.

Construction and nature should respect one another:

"Using of economical and recycled materials, self-sufficient energy, can remove the project from its artificial volume and get it closer to the landscape, creating a relationship between man and his environment", a principle he has always believed in.

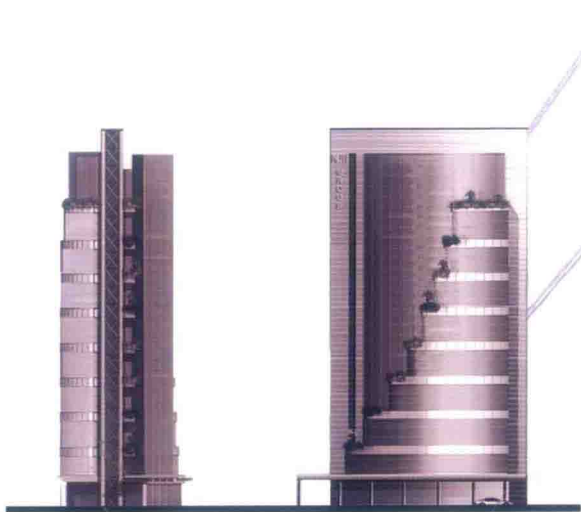
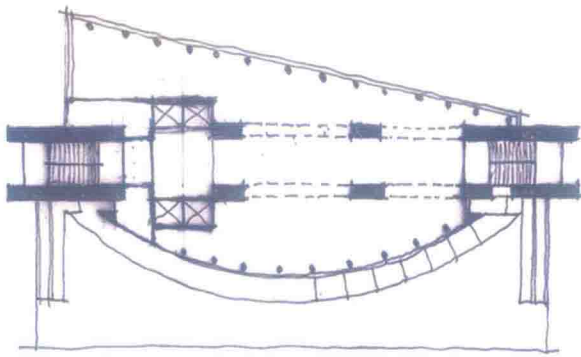
M.R. GROUP

ARCHITECTURE AND ENGINEERING SERVICES

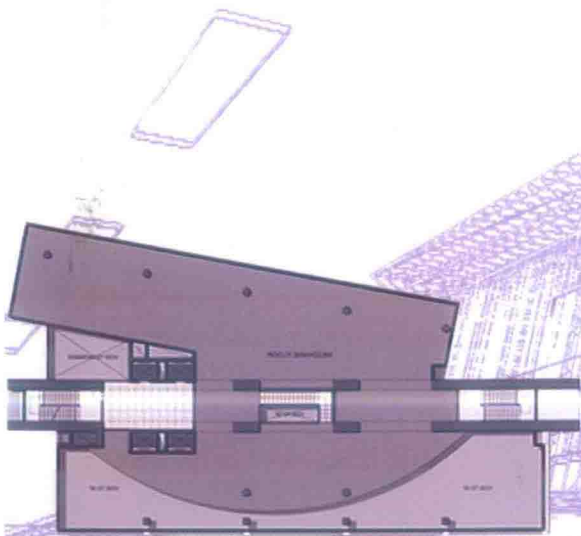
GLASS TOWER



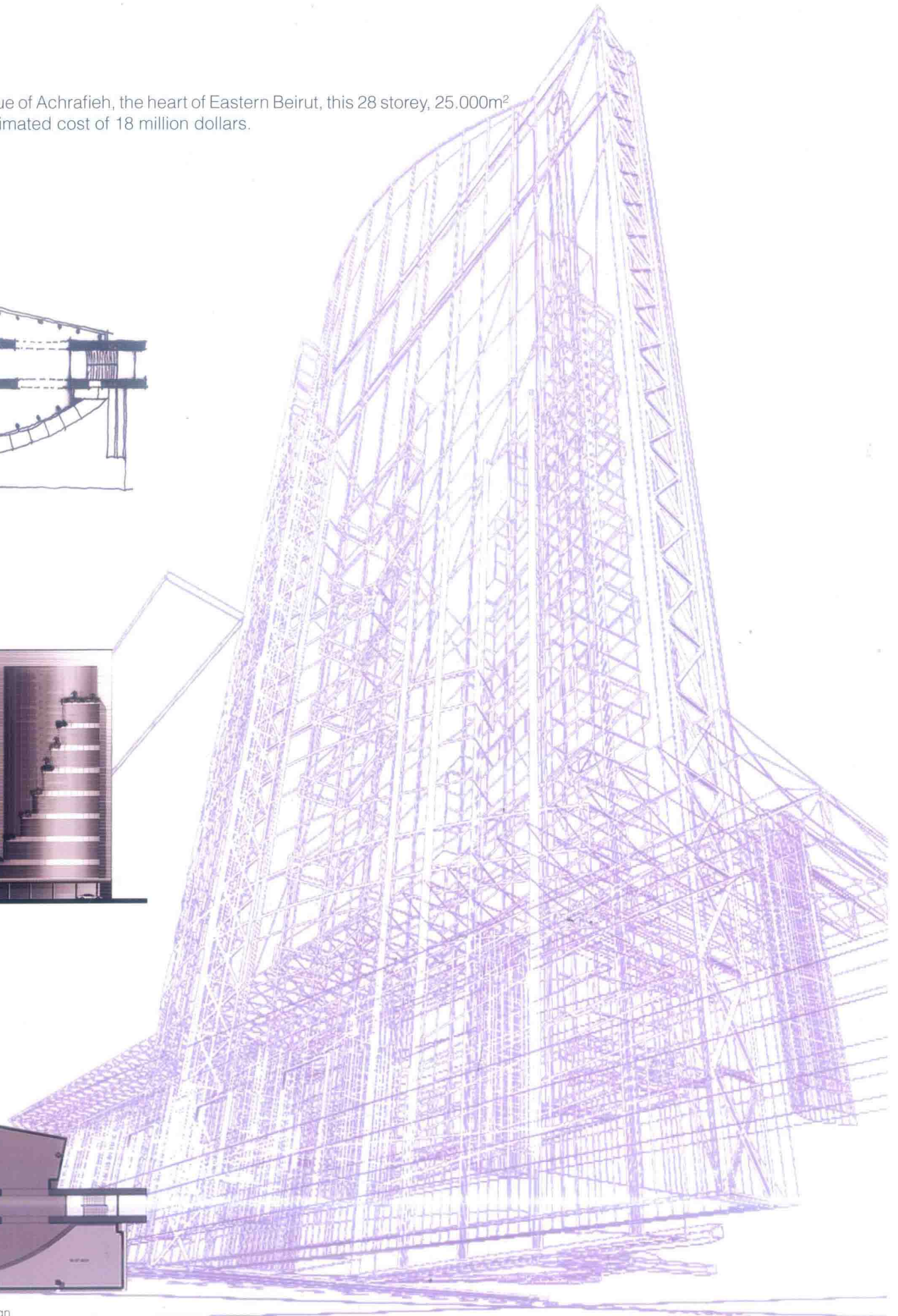
Situated in the main Avenue of Achrafieh, the heart of Eastern Beirut, this 28 storey, 25.000m² office building has an estimated cost of 18 million dollars.



Elevations



Ground floor plan



ADMA BAY VIEW





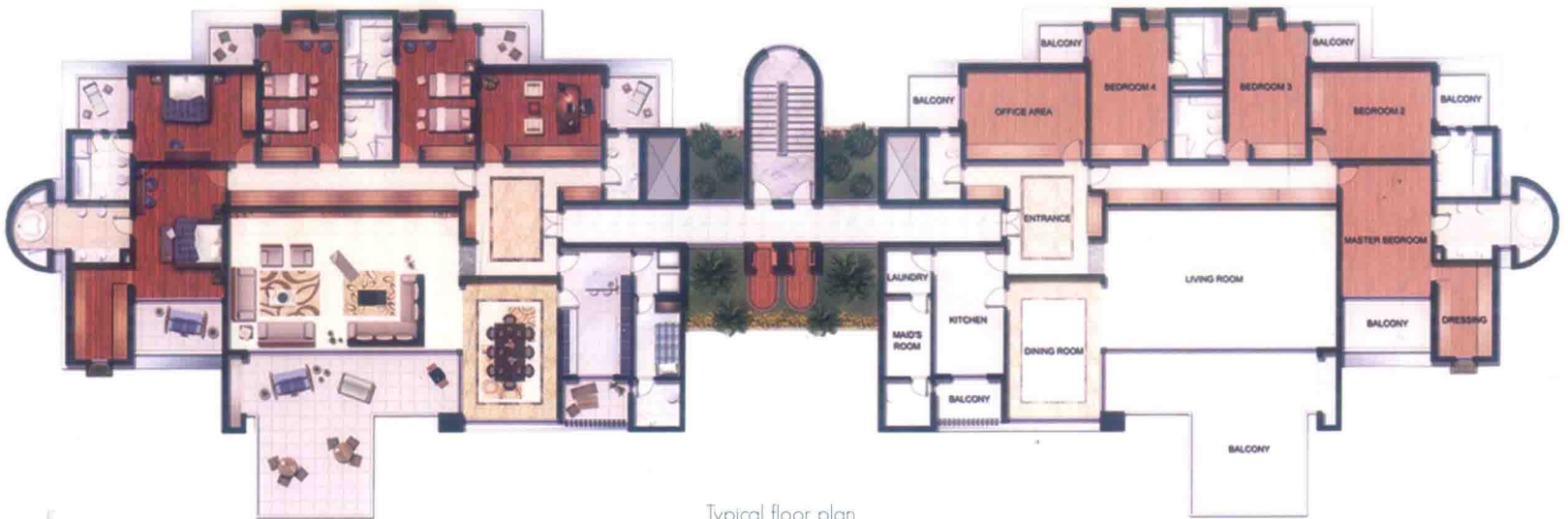
Perspective view



Mass plan

Two high-end residential blocks for a total built up area of 3,600m², with an underground parking of 1,500m² and a shared outdoor swimming pool.

Each block features four floors.



Typical floor plan



Elevation

PHOENIX RESORT

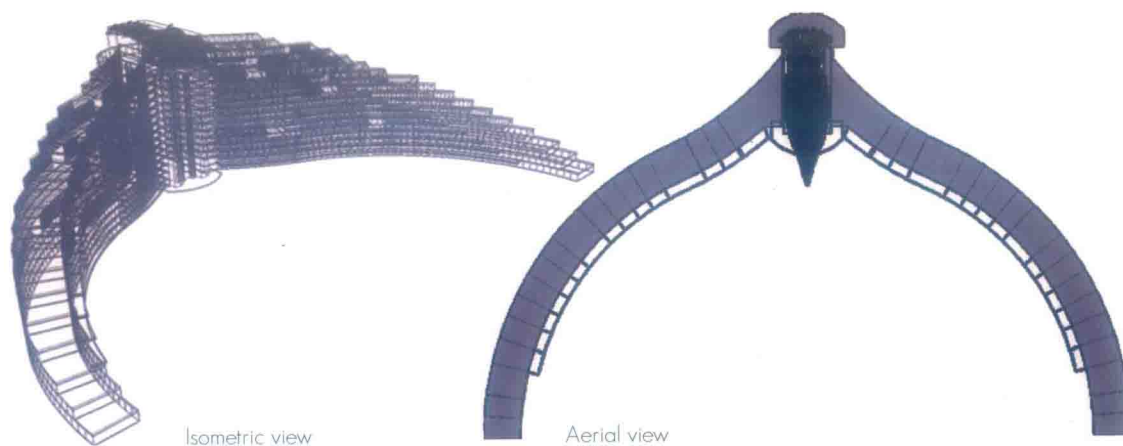


The Project was named after the symbolic ancient Phoenician Bird "The Phoenix" flying in the skies of Lebanon, from which the concept was inspired.

The beach resort comprises 510 chalets, 300 bedrooms five star hotel, ballrooms, restaurants, 38 bungalows, green areas and yachting club for a total built-up area of 65,000m².



Perspective view



Isometric view

Aerial view

