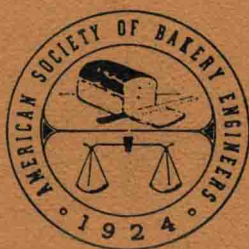


PROCEEDINGS
of
The Fifty-Fourth Annual Meeting
of the
AMERICAN SOCIETY OF BAKERY ENGINEERS
1978



MARCH 6-8, 1978
CHICAGO, ILLINOIS

TABLE OF CONTENTS

Introduction

Introduction	5
Program booklet highlights	6
Officers	7
Creed	16

Monday Morning Session

The Meeting opens—Donald S. Noot	17
Invocation—Charles B. Clark	17
The President comments—John L. DeKeizer	18
The Secretary reports—Robert A. Fischer	20
Program preview—Frank J. Fischer	24
Annual business meeting	26
Presentations and introductions	28
Opening address—Dr. William J. Hoover	30
Report on Ladies' Tea	34

Monday Afternoon "A" Session

The session opens—Frederick J. Bower	35
Water as an ingredient—John J. Collins	36
Discussion	39
Sourdough products—Frank E. Johnson	42
Discussion	46
The practical application of fiber materials in bread production—Donald K. Dubois	48
Discussion	52
Vital wheat gluten—reasons and usage— Fred B. Lanham, Jr.	54
Discussion	57
Hearth bread production—George A. Poulos	58
Discussion	63

Monday Afternoon "B" Session

The session opens—Joseph W. Hickenbottom	65
Baking in the package—William Brown	66
Discussion	73
Palm oil and shortenings—Fred Eber	78
Discussion	83
Wastewater management and treatment— Kim Vasan	84
Discussion	89
Frozen dough products—Donald F. Fuhrmann	90
Discussion	94
Report on President's "Get Acquainted" Reception	96
Report on Allied Trades of the Baking Industry Early Bird Breakfast	96

Tuesday Morning Session

The session opens—Frank R. Goley	97
New baking methods—Roy S. Sievers	98
Discussion	104
Introduction to the energy panel	105
Energy outlook—Robert C. Anderson	106
Heat recovery from the oven—Henry F. Weiss	108
Alternate fuel systems—William L. Swartz	111
Other energy saving opportunities in bakeries— Robert W. Batey	113
Panel discussion	115
Report on Canadian Member Luncheon	120
Report on Clayton Emerick Memorial Luncheon	120

Tuesday Afternoon Session

The session open—Thomas K. McMurry, II	121
Soft roll equipment—Malcolm R. Broadus, Jr.	122
Discussion	131
Automated pallet and basket handling systems— A. C. "Don" Hiebert	132
Discussion	138
Automated puff pastry production—Torahiko Hayashi, presented by Guy Shoup	139
Discussion	144
Basic sanitation principles—Dr. William J. Hoover	147
Discussion	160
Open forum—Jack H. Barcinski and Peter S. Miravalle, Jr.	160
Report on Bakery Foods Display	172

Wednesday Morning Session

The session opens—Charles F. Hess, Jr.	173
The implementation of the metric system—Jan W. Nyssen, Sr. ...	174
Discussion	178
What the FDA tells their field inspectors to look for in a bakery—T. L. Huge	184
Discussion	194
Natural food coloring materials—Harry Meggos	195
Discussion	202
Regulatory requirements—a review and score card— Paul Khan	203
Discussion	208
Installation of officers	209
Final adjournment	212

Miscellaneous

Subject index of 1978 Meeting	213
Subject listing of papers covered in PROCEEDINGS—1965-1977 inclusive	219
Technical bulletins listing—1965-1977 inclusive	227
Engineers' information service reports listing—1965-1977 inclusive	228
Registration list	229

of the
Fifty-Fourth Annual Meeting
AMERICAN SOCIETY
OF
BAKERY ENGINEERS

March 6-8, 1978

Pick-Congress Hotel, Chicago, Illinois

As a service to our members, we have included a list of the papers presented during the Annual Meetings from 1965 through 1977. The titles of the papers have been grouped under general headings according to the primary subject matter covered in the papers. We hope this list is helpful to you in locating information on subjects in which you have a particular interest.

near the business papers in the baking and allied fields generously contributed space to describe the activities of the Society. Many of them not only gave careful coverage to our Annual Meeting, but illustrated it fully with photographs taken during the Meeting, and a number of these publications have graciously provided us with their prints to help us make our PROCEEDINGS more attractive. We wish to express our appreciation to all for their splendid cooperation.

2 North Riverside Plaza, Chicago, Ill., U.S.A., 60606

**©Copyright 1978 by The American Society of Bakery Engineers
Printed in U.S.A.**

TABLE OF CONTENTS

Introduction

Introduction	5
Program booklet highlights	6
Officers	7
Creed	16

Monday Morning Session

The Meeting opens—Donald S. Noot	17
Invocation—Charles B. Clark	17
The President comments—John L. DeKeizer	18
The Secretary reports—Robert A. Fischer	20
Program preview—Frank J. Fischer	24
Annual business meeting	26
Presentations and introductions	28
Opening address—Dr. William J. Hoover	30
Report on Ladies' Tea	34

Monday Afternoon "A" Session

The session opens—Frederick J. Bower	35
Water as an ingredient—John J. Collins	36
Discussion	39
Sourdough products—Frank E. Johnson	42
Discussion	46
The practical application of fiber materials in bread production—Donald K. Dubois	48
Discussion	52
Vital wheat gluten—reasons and usage— Fred B. Lanham, Jr.	54
Discussion	57
Hearth bread production—George A. Poulos	58
Discussion	63

Monday Afternoon "B" Session

The session opens—Joseph W. Hickenbottom	65
Baking in the package—William Brown	66
Discussion	73
Palm oil and shortenings—Fred Eber	78
Discussion	83
Wastewater management and treatment— Kim Vasan	84
Discussion	89
Frozen dough products—Donald F. Fuhrmann	90
Discussion	94
Report on President's "Get Acquainted" Reception	96
Report on Allied Trades of the Baking Industry Early Bird Breakfast	96

Tuesday Morning Session

The session opens—Frank R. Goley	97
New baking methods—Roy S. Sievers	98
Discussion	104
Introduction to the energy panel	105
Energy outlook—Robert C. Anderson	106
Heat recovery from the oven—Henry F. Weiss	108
Alternate fuel systems—William L. Swartz	111
Other energy saving opportunities in bakeries— Robert W. Batey	113
Panel discussion	115
Report on Canadian Member Luncheon	120
Report on Clayton Emerick Memorial Luncheon	120

Tuesday Afternoon Session

The session open—Thomas K. McMurry, II	121
Soft roll equipment—Malcolm R. Broadus, Jr.	122
Discussion	131
Automated pallet and basket handling systems— A. C. "Don" Hiebert	132
Discussion	138
Automated puff pastry production—Torahiko Hayashi, presented by Guy Shoup	139
Discussion	144
Basic sanitation principles—Dr. William J. Hoover	147
Discussion	160
Open forum—Jack H. Barcinski and Peter S. Miravalle, Jr.	160
Report on Bakery Foods Display	172

Wednesday Morning Session

The session opens—Charles F. Hess, Jr.	173
The implementation of the metric system—Jan W. Nyssen, Sr. ...	174
Discussion	178
What the FDA tells their field inspectors to look for in a bakery—T. L. Huge	184
Discussion	194
Natural food coloring materials—Harry Meggos	195
Discussion	202
Regulatory requirements—a review and score card— Paul Khan	203
Discussion	208
Installation of officers	209
Final adjournment	212

Miscellaneous

Subject index of 1978 Meeting	213
Subject listing of papers covered in PROCEEDINGS—1965-1977 inclusive	219
Technical bulletins listing—1965-1977 inclusive	227
Engineers' information service reports listing—1965-1977 inclusive	228
Registration list	229

American Society of Bakery Engineers

ROBERT A. FISCHER, SECRETARY

Room 1921, Riverside Plaza Bldg.
2 North Riverside Plaza
CHICAGO, IL 60606

54th ANNUAL MEETING

PICK-CONGRESS HOTEL
March 6-8, 1978, Chicago, Illinois

Introduction to the 1978 PROCEEDINGS

President John L. DeKeizer referred to the CREED of the Society for his inspiration when selecting the theme for his year in office. He chose "A.S.B.E. — To Share the Ideals of Continuing Education."

"Sharing" is the key word to most of the activities of the Society and is evident to the greatest extent in the presentation of technical papers on the Annual Meeting program.

The program of the 54th Annual Meeting gave 21 participants—all experts in their respective fields—the opportunity to share their knowledge and expertise with the attendants at the Meeting and now with all members of A.S.B.E. through the printing of these PROCEEDINGS.

Between the covers of this edition are copies in complete form of all papers presented, as well as reproduction of slides and handout materials. Also included are the transcripts of the discussions which took place after each paper and the questions asked and answers provided during the Open Forum.

Shortly after the Meeting, every participant who could be identified was sent a transcript of his statements as recorded by the reporter at the Meeting. In this way, the comments included are correct insofar as they represent what the speaker intended to say. Statements are strictly the opinions of those by whom they were made.

Interspersed throughout this book are photographs of many members and guests. These photographs were made available to A.S.B.E. as a courtesy of the bakery business papers—which also provide thorough coverage of our Annual Meeting in their publications. We sincerely appreciate their cooperation and courtesies.

Reports of the special programmed events are part of the Meeting and, therefore, are reported in the PROCEEDINGS. These are the Ladies' Tea on Sunday afternoon, the President's Reception on Monday evening and the Bakery Foods Display on Tuesday afternoon and evening.

The program of the Annual Meeting is the prime responsibility of the members of the Program Committee, however, there are many, many more people involved. Besides those who appear on the speakers' platform, are many who work behind the scenes. The Music Committee Chairman arranges for the organ music interludes, the President's Reception Chairman makes all the arrangements for the reception, the Bakery Foods Display Chairman and his industrious committee members work tirelessly to make the Display interesting and attractive, and, of course, the Property Room Manager and his assistants work throughout the Meeting assuring the smooth functioning of many phases of the Meeting arrangements.

Another group that works throughout the Annual Meeting is the Bakers Courtesy Club of

Chicago. Their "ASK ME" members have been assisting at our Meetings since 1928 and, again this year, maintained the message board, ushered at the entrances of the meeting rooms and monitored the microphones in the meeting room. Their assistance is invaluable to the success of our Meeting and we gratefully acknowledge their continued efforts on our behalf.

The attendance at the 54th Annual Meeting was 1,214—not including the ladies who accompany registrants and who are granted complimentary registration.

Prior to the opening of the Annual Meeting, the Advisory and Executive Committees of A.S.B.E. met to consider the reports of the standing and special committees, and to attend to other matters pertaining to the operation of the Society. The Executive Committee met again following the Annual Meeting adjournment, to review the program and to approve the preliminary plans for the 55th Annual Meeting program as presented by the newly-appointed

Program Chairman J. W. "Bill" Doty.

This issue of the PROCEEDINGS would not be complete without the registration list, the subject index and the section listing the papers presented on Annual Meeting programs since 1965. For the first time this year—on the recommendation of Publications Committee Chairman Donald K. Dubois, with the approval of the Executive Committee—we have included a listing of technical bulletins and E.I.S. reports issued since 1965. Including these lists is another step toward making the PROCEEDINGS a valuable addition to the reference library of every baking technician.

Every A.S.B.E. member receives a copy of the PROCEEDINGS as a benefit of membership. Whether or not you attended the 54th Annual Meeting, we feel sure you will want to refer to the contents of this edition frequently for the valuable information it contains on bakery production and related subjects.

FOR YOUR INFORMATION

For your convenience in locating the various rooms in the Pick-Congress assigned for our use, we list the floors:

PROGRAM MEETING ROOMS

Great Hall—Second Floor

Monday A.M. Session
Monday P.M. "A" Session
Tuesday A.M. Session

Gold Room—Second Floor

Monday P.M. "B" Session
Tuesday P.M. Session
Tuesday P.M. Open Forum
Wednesday A.M. Session

OTHER

Buckingham Room—Advisory Committee Meeting—Ground Level

Alcove—Luncheon for Advisory Committee—Ground Level

Buckingham Room—Executive Committee Meeting (Sun.)—Ground Level

Gold Room—Program Participant's Meeting—Second Floor

Plaza Room—A.S.B.E. Office—Second Floor

Belmont Room—Property Room—Second Floor

Francis I Room—Registration—Second Floor

Windsor and Buckingham Rooms—Bakery Foods Display—Ground Level

Buckingham Room—Executive Committee Meeting (Wed.)—Ground Level

PRIZES ON DISPLAY

See the prizes for the Wednesday morning attendance drawings in the lobby window of the jeweler's on the left of the Michigan Ave. main entrance to the hotel.

INTRODUCTION

TO YOUR

54th ANNUAL MEETING

On behalf of the Officers and the members of the Program Committee, I would like to welcome you to the 54th Annual Meeting of the American Society of Bakery Engineers.

The two-and-one-half day program will feature 22 presentations covering a wide range of subjects—all of which we feel are important to everyone involved in production in the bakery.

This year, we have again scheduled the popular expert panel discussion concept. The time is Tuesday morning and the subject is ENERGY—an important and timely subject, especially in light of this winter's severe weather conditions.

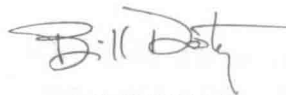
This energy panel is only part of the two-and-one-half day program which, we know, you will find to be interesting, thought-provoking and educational.

The Program Committee and each of the speakers have expended a considerable amount of time and effort in the preparation of their presentations. We ask for your active participation in each of these sessions.

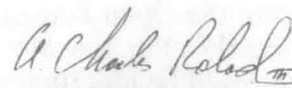
We thank you for coming and hope that you will have an enjoyable visit and that this Annual Meeting program will be of benefit to you.



FRANK J. FISCHER
PROGRAM CHAIRMAN



J. W. "BILL" DOTY
FIRST ASSISTANT
PROGRAM CHAIRMAN



A. CHARLES ROLAND, III
SECOND ASSISTANT
PROGRAM CHAIRMAN

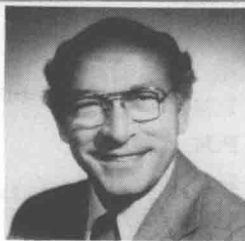
AMERICAN SOCIETY OF BAKERY ENGINEERS

ROOM 1921, RIVERSIDE PLAZA BLDG.

2 NORTH RIVERSIDE PLAZA

CHICAGO, ILLINOIS 60606

OFFICERS 1977-1978



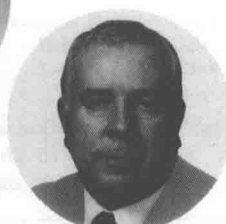
JOHN L. DeKEIZER
President



BYRON R. BAIRD
First Vice President



ARMAND P. CICIU
Second Vice President



FRANK H. OTWAY
Third Vice President



ROBERT A. FISCHER
Secretary-Treasurer

PROGRAM CHAIRMEN 1977-1978



FRANK J. FISCHER
Program Chairman



J. W. BILL DOTY
First Assistant Chairman



A. CHARLES ROLAND III
Second Assistant Chairman

OFFICERS OF CHAPTERS AFFILIATED TO A.S.B.E.

BRITISH

Chairman Alexander M. Buchanan
First Vice Chairman Francis H. Ellis
Second Vice Chairman Kenneth Collinge
Secretary Ronald W. Sheppard
Assistant Secretary Shelia J. Wedgwood
Treasurer Colin A. Matthes

AUSTRALIAN

Chairman Peter H. Rafferty
First Vice Chairman John W. Packham
Second Vice Chairman Kenneth G. Sparrow
Third Vice Chairman Zig Bluzmanis
Secretary-Treasurer Michael B. Dennis

REGISTRATION

Please register promptly on arrival to prevent delays during meeting hours.

Registration Hours

Sunday	1:00 P.M. to 5:00 P.M.
Monday	8:00 A.M. to 5:00 P.M.
Tuesday	8:00 A.M. to 5:00 P.M.
Wednesday	8:00 A.M. to 10:00 A.M.

Registration Desk

Francis I Room

Near escalators on second floor. Please cooperate by keeping escalator landings free of crowds, and avoid group conversations in front of registration desks.

Registration Fees

Members	\$30.00
Non-Members	\$50.00

Registration includes President's Reception and Bakery Foods Display. Admittance to these events is limited to registrants—by badge only.

JOINING THE SOCIETY

A non-member who joins the Society before registering for the 54th Annual Meeting can register as a member.

The Membership Committee maintains a desk in the registration area (Francis I Room) during the registration hours. Committee members are on hand to explain the benefits of membership and to assist in signing up new members.

AN EXPLANATION OF BADGES AND RIBBONS

Badge Inserts

White for members
Pink for non-members
With a star, for new members
(who have joined since 9/1/77)

Ribbons

White for overseas visitors
Silver, coral, ruby & gold for members with more than 25 years continuous membership
Blue for members on the program
Green for Committee Chairmen and Executive Committee members

SCHEDULE OF LADIES' ACTIVITIES

SUNDAY, MARCH 5, 1978

2:30-4:30 P.M.—Ladies' Tea
Lincoln Room

MONDAY, MARCH 6, 1978

5:30-7:00 P.M.—President's Reception
Gold Room

TUESDAY, MARCH 7, 1978

9:30 A.M.—Ladies' Tour
and Luncheon

PRE-MEETING SCHEDULE OF EVENTS

SUNDAY, MARCH 5, 1978

10:00 A.M.—ADVISORY COMMITTEE
MEETING

Buckingham Room

1:00 P.M.—ADVISORY COMMITTEE
LUNCHEON

Alcove

2:00 P.M.—EXECUTIVE COMMITTEE
MEETING

Buckingham Room

2:30-4:30 P.M.—LADIES TEA

Lincoln Room

(Third Floor—North)

4:00 P.M.—PROGRAM PARTICIPANTS,
SESSION CHAIRMEN AND
MEETING CHAIRMEN MEETING
Gold Room

POST-MEETING SCHEDULE OF EVENTS

WEDNESDAY, MARCH 8, 1978

2:00 P.M.—EXECUTIVE COMMITTEE
MEETING

Buckingham Room

THURSDAY, MARCH 9, 1978

8:00 A.M.—PROGRAM COMMITTEE
MEETING

Lake Shore Room

SCHEDULE OF NON-A.S.B.E.-MEETING FUNCTIONS TUESDAY, MARCH 7, 1978

Allied Trades of the Baking Industry, Inc.

Early Bird Breakfast

8:00 A.M.—Gold Room
William T. McCurry
Chairman

American Association of Cereal Chemists Luncheon

(Not Being Held)

Canadian Members Luncheon

11:45 A.M.—Oxford Room
R. A. Conrad, Chairman

Clayton Emerick Memorial Luncheon Luncheon

11:45 A.M.—Florentine Room
Joseph DeMaria, Chairman

MONDAY MORNING PROGRAM

March 6, 1978

GREAT HALL

- 9:00—Meeting Room Opens
Organ Music Interlude
- 9:15—Call to Assembly and Greetings
DONALD S. NOOT, Hazelwood, MO
Meeting Chairman
- 9:20—Entrance of Officers
Introduction by DONALD S. NOOT
- 9:25—America The Beautiful
ANDREW MAIER, II, Reading, PA
- 9:30—Invocation
CHARLES B. CLARK, Athens, GA
- 9:35—The President Comments
JOHN L. DEKEIZER, Deerfield, IL
- 9:45—The Secretary Reports
ROBERT A. FISCHER, Chicago, IL
- 9:55—Program Preview
FRANK J. FISCHER, Kansas City, KS
- 10:00—Annual Business Meeting
Conducted by JOHN L. DEKEIZER, President
- 10:15—Presentations and Introductions
- 10:35—Introduction of Speaker
ARMAND P. CICCUI, Scotch Plains, NJ
- 10:40—Opening Address
WILLIAM J. HOOVER, Manhattan, KS
- 11:10—Introduction of Guest Speaker
JOHN L. DEKEIZER
- 11:15—Welcome and Greetings
THE HONORABLE MICHAEL A. BILANDIC,
Mayor of the City of Chicago
- 11:30—Adjournment

MONDAY AFTERNOON PROGRAM

March 6, 1978

TECHNICAL PRODUCTION SESSION "A"

GREAT HALL

- 1:15—Meeting Room Opens
Organ Music Interlude
- 1:20—Call to Assembly
DONALD S. NOOT, Hazelwood, MO
Meeting Chairman

1:25—Introduction to Technical Production Session
FREDERICK J. BOWER, Winston-Salem, NC
Session Chairman

1:30—Water as an Ingredient
JOHN J. COLLINS, Arlington Heights, IL
A case study of a sponge-and-dough system and the effect of variations in water—including practical methods of dealing with these variations.

1:50—Discussion

2:00—Sourdough Products
FRANK E. JOHNSON, Oak Creek, WI
Natural and synthetic sour ingredients used to produce sourdough bakery foods—their effect and usage.

2:20—Discussion

2:30—The Practical Application of Fiber Materials in Bread Production
DONALD K. DUBOIS, Manhattan, KS
An explanation of the types of fibers and the techniques, formulations and modifications used in production of fiber breads.

2:50—Discussion

3:00—Vital Wheat Gluten—Reasons and Usage
FRED B. LANHAM, JR., Greensboro, NC
A review of the gluten industry—including the reasons for and applications of use in production, and recent developments.

3:20—Discussion

3:30—Hearth Bread Production
GEORGE A. POULOS, Chicago, IL
Formulation, processing procedures and the equipment used in the production of hearth bread varieties.

3:50—Discussion

4:00—Adjournment

MONDAY AFTERNOON PROGRAM

March 6, 1978

TECHNICAL PRODUCTION SESSION "B"

GOLD ROOM

1:15—Meeting Room Opens
Organ Music Interlude

1:20—Call to Assembly
BYRON R. BAIRD, Fort Worth, TX
Meeting Chairman

1:25—Introduction to Technical Production Session
JOSEPH W. HICKENBOTTOM, Greenwich, CT
Session Chairman

1:30—Baking in the Package
WILLIAM BROWN, Oak Brook, IL
The technological advances in manufacturing paperboard containers, use for baking and the advantages and disadvantages in applications in the baking industry.

1:50—Discussion

2:00—Palm Oil and Shortenings
FRED EBER, New York, NY
The history, development, applications and comparison of oils as applied to bakery production.

2:20—Discussion

2:30—Wastewater Management and Treatment
KIM VASAN, Ridgefield, CT
Definitions of various types of waste encountered in bakeries and the available methods of treatment, including manpower requirements.

2:50—Discussion

3:00—Frozen Dough Products
DONALD F. FUHRMANN, Monroe, CT
The formulations, methods and procedures for producing frozen dough products.

3:20—Discussion

3:30—Adjournment

MONDAY EVENING PROGRAM

March 6, 1978

GOLD ROOM

5:30-7:00—President's Reception
JOHN F. VOYDA, Chicago, IL, Chairman
President DeKeizer and the other officers, with their ladies, look forward to meeting fellow members and guests at this annual social event. During this interlude, visit with friends and enjoy light refreshments.
(Admission by badge only)

TUESDAY MORNING PROGRAM

March 7, 1978

GREAT HALL

9:45—Meeting Room Opens
Organ Music Interlude

9:50—Call to Assembly
ARMAND P. CICCUI, Scotch Plains, NJ
Meeting Chairman

9:55—Introduction to Technical Production Session
FRANK R. GOLEY, Dallas, TX
Session Chairman

10:00—New Baking Methods
ROY S. SIEVERS, San Jose, CA
Changes in the methods and equipment for the baking of bread—as well as ways to increase oven efficiency.

10:20—Discussion

10:30—Energy Panel
Four short presentations on the following energy-related subjects to be followed by a discussion between the panel members and the audience on these and related subjects.

Energy Outlook—ROBERT C. ANDERSON,
Port Washington, NY

Heat Recovery from the Oven—
HENRY F. WEISS, Maumee, OH

Alternate Fuel Systems—
WILLIAM L. SWARTZ, Saginaw, MI

Other Energy Saving Opportunities in
Bakeries—ROBERT W. BATEY, Rye, NY

11:45—Adjournment

TUESDAY AFTERNOON PROGRAM

March 7, 1978

GOLD ROOM

1:15—Meeting Room Opens
Organ Music Interlude

1:20—Call to Assembly
FRANK H. OTWAY, Springfield, OH
Meeting Chairman

1:25—Introduction to Technical Production Session
THOMAS K. McMURRY, II, Winston-Salem, NC
Session Chairman

1:30—Soft Roll Equipment
MALCOLM R. BROADDUS, JR., Richmond, VA
Recent developments in in-line and automated approaches to bun packaging and equipment for producing soft rolls.

1:50—Discussion

2:00—Automated Pallet and Basket Handling Systems
A. C. "DON" HIEBERT, Finksburg, MD
A time-and-motion study comparing a manual system with automated systems.

2:20—Discussion

2:30—Automated Puff Pastry Production
TORAHIKO HAYASHI, Utsunomiya, Japan
The latest equipment and techniques used in the manufacture of puff pastry and puff pastry products.

2:50—Discussion

3:00—Basic Sanitation Principles
Audio-Visual Presentation
The first in a series of sanitation training programs.

3:20—Discussion

3:30—Open Forum
JACK H. BARCINSKI, Kansas City, KS,
Moderator
PETER S. MIRAVALLE, JR., St. Louis, MO,
Co-Moderator

5:00—Adjournment

TUESDAY EVENING PROGRAM

March 7, 1978

WINDSOR AND BUCKINGHAM ROOMS

5:30-7:30—Bakery Foods Display

J. J. VISKOCIL, Franklin Park, IL,
Chairman

HAROLD D. FORTNER, Franklin Park, IL,
Assistant Chairman

DONALD F. ANETSBERGER, Northbrook, IL
GEOFFREY B. BURGESS, Chillicothe, OH
ALVIN C. FORMO, Woodinville, WA
WILLIAM A. HOFFMAN, Chicago, IL
ARTHUR G. LIEB, Chicago, IL
B. ALVIN MORGAN, Decatur, IL
MELVIN W. MUELLER, Mt. Prospect, IL
RONALD D. PATTI, Chicago, IL
FRANK A. PLEITGEN, Wheaton, IL
JOHN C. PLUMLEY, Evergreen Park, IL
JOHN D. SHOGREN, Mt. Prospect, IL
WILLIAM D. UNTCH, Bradley, IL
CLAIRE B. VIVIAN, II, St. Louis, MO

The Bakery Foods Display covers the widest possible variety of bakery foods from all corners of our country and from all over the world. It has practical significance in acquainting us with progress in our specialized field of production. It also instills in us the pride in the achievement of our industry and its contribution to human nutrition.

The Display opens at 5:30 P.M. Tuesday, March 7, 1978. ADMISSION BY BADGE ONLY. Samples in the general display area are to be VIEWED ONLY and may not be opened for examining, tasting and eating. Samples in the "tear-apart room" are open and can be examined, tasted and eaten. At 7:30 P.M. when the display closes, all samples will be turned over to the Salvation Army for local consumption.

We acknowledge with grateful appreciation the cooperation of our friends in the allied trades, who collected most of the bakery products for this Display. We also thank the donors of this merchandise. Their help makes this Display possible. Our thanks to our members who sent in samples of their products.

WEDNESDAY MORNING PROGRAM

March 8, 1978

GOLD ROOM

9:00—Meeting Room Opens
Organ Music Interlude

9:05—Call to Assembly
JOHN L. DEKEIZER, Deerfield, IL
Meeting Chairman

9:10—Introduction to Technical Production Session
CHARLES F. HESS, JR., Englewood Cliffs, NJ
Session Chairman

9:15—The Implementation of the Metric System
JAN W. NYSSSEN, SR., San Jose, CA
A review of the metric system—including the cost and benefits of its implementation.

9:35—Discussion

9:45—What the FDA Tells Their Field Inspectors to Look for in a Bakery
T. L. HUGE, St. Louis, MO
Areas of concern to the FDA that can be anticipated by the baker before an inspection.

10:05—Discussion

10:15—Natural Food Coloring Materials
HARRY MEGGOS, St. Louis, MO
The types of materials that are approved for usage and the regulations regarding these and other coloring agents.

10:35—Discussion

10:45—Regulatory Requirements—A Review and Score Card
PAUL KHAN, Rye, NY
The current status of FDA regulations as they affect the baking industry.

11:05—Discussion

11:15—Installation of Officers

11:20—President's Comments and Appointments

11:35—The Lord's Prayer
ANDREW MAIER, II, Reading, PA

11:40—Final Adjournment

A.S.B.E. POLICIES AND GENERAL INFORMATION

COMMERCIALISM POLICY

If you have a question to ask or a statement to make during the sessions, request a microphone, rise, state your name and home city and then proceed. It is the FIRM POLICY of the Society that everyone appears as an individual and not as the representative of any commercial organization; hence, there shall be no commercial exploitation of any product, machine, equipment, brand name, firm name, patent, publication or service from either the speakers' platform or the floor.

ALLIED ACTIVITIES

All hospitality rooms are to be closed during all business sessions. It is also expected that commercial promotion of company or brand names will not be indulged in through such media as signs, room displays, moving pictures, general distribution of printed literature, samples, or advertising novelties. The usual cooperation of all allied firms in this policy which has been such an important factor in the success of our meetings in past years is anticipated again this year.

BAKERY FOODS DISPLAY

Under no circumstances is anyone permitted to remove any bakery products from the display area either while the Display is open or after it closes.

JOINING THE SOCIETY

This is an excellent time to join the Society. Application blanks are available at the Membership Desk and signed applications will be accepted. A temporary receipt will be provided. Your official dues card, membership certificate and printed material will be mailed after the Meeting.

Also page 32 of this Program is a membership application form for your convenience.

PAYMENT OF DUES

Those desiring to pay dues during the Annual Meeting may do so at the Special A.S.B.E. Office located conveniently in the Plaza Room (Second Floor). A.S.B.E. personnel will be on duty, and will give you a temporary receipt. Your DUES CARD, and membership certificate will be mailed to you after the Meeting.

WEAR YOUR BADGE!

You will be admitted to the Meeting ONLY if you are *wearing* your badge. Wear it proudly on your right lapel; it is your identification that you have registered for the 54th Annual Meeting.

GROW WITH US

If you attended our Meeting as a Non-Member and feel you will benefit by membership in the Society, just fill in the form and mail to our office with \$40.00 (\$5.00 is for initiation fee and \$35.00 dues for the fiscal year). This entitles you to all the publications issued during this period INCLUDING the complete transcript of the Annual Meeting PROCEEDINGS which alone is worth your initial investment.

BE A BOOSTER MEMBER

To our members — if you have an associate or acquaintance who would benefit from membership in the Society—pass the application form in this book along to him.

BAKERS COURTESY CLUB

The members of this very fine group of Chicago Allied Men volunteer their services for our Meeting each year. They contribute greatly to the conduct and success of the Annual Meeting and we are pleased to publicly acknowledge their outstanding help again this year.

These men are identified by the familiar "ASK ME" badges. Please cooperate with them.

In addition to ushering during all regularly scheduled functions, they render valuable assistance in many other ways, namely:

- ...See that everyone is promptly seated.
- ...Prevent congestion at the door at all times.
- ...Man the microphones in the Meeting Room when you have a question to ask or a statement to make.
- ...Assist where possible in providing information about the Meeting.
- ...Maintain an Information Desk in the Rendezvous Foyer. A courteous attendant is on duty at all times between and during sessions ready to be of service.
- ...Receive telephone calls, telegrams, and personal messages which reach the hotel for those attending our Meeting. No interruptions to page anyone are permitted except in extreme emergencies.
- ...Post notices of calls or messages on Message Board. By checking this board occasionally you can help them in their service to you.
- ...Distribute session material such as charts, formulas, releases, when necessary.

This outstanding organization has long been of real service to us and to the industry of which we are all a part. May they continue to grow and prosper.

AMERICAN SOCIETY OF BAKERY ENGINEERS

APPLICATION FOR MEMBERSHIP

I hereby apply for membership in the American Society of Bakery Engineers.

If elected, I promise and agree to abide by the constitution and policies of this organization.

PLEASE TYPE OR PRINT ALL ANSWERS

Name (in full) _____
Home Address _____
Street Address City State Zip Code
Date of Birth _____
Name of Employer _____
Employer's Business Address _____
Street Address City State Zip Code
Send mail to: Home Address ☐ Business Address ☐
Business of Employer _____ Position Held _____

Forty dollars should accompany the application. Five dollars is for Initiation Fee and thirty-five dollars is for the National dues for the fiscal year Sept. 1, - Aug. 31 and all publications of the Society for that year.

Date _____

Please check one or more. Attended:

- ☐ High School Name _____
☐ College or University.. Name _____
Degree _____ Course _____
☐ Baking School Name _____

Recommended by: 1 _____

Recommended by: 2 _____
(Applicants must be recommended by two members)

Signature _____

Send application to Secretary

AMERICAN SOCIETY OF BAKERY ENGINEERS

Room 1921, Riverside Plaza Bldg.

2 North Riverside Plaza

Chicago, Illinois 60606

COMMITTEES 1977-1978

EXECUTIVE COMMITTEE

John L. DeKeizer, Deerfield, IL
Byron R. Baird, Fort Worth, TX
Armand P. Cicciu, Scotch Plains, NJ
Frank H. Otway, Springfield, OH
Robert A. Fischer, Chicago, IL
Donald S. Noot, Hazelwood, MO
Lyle C. Woods, Olathe, KS
Frank J. Martin, Thomasville, GA
Otto Richter, Jr., San Antonio, TX
Jack H. Barcinski, Kansas City, KS
Richard L. Morine, Mentor, OH
Robert E. Henchal, Sioux City, IA
Richard Schlipf, La Crosse, WI
Edward A. Stigler, Palos Heights, IL
Howard J. Wolfmeyer, Argo, IL
Frederick J. Bower, Winston-Salem, NC
Ernest T. Stevens, Birmingham, AL
Charles F. Blumm, Pittsburgh, PA
F. Robt. Grant, St. Louis, MO

STANDING COMMITTEES

Financial—John C. MacAlpine III, Swarthmore, PA
Publications—Donald K. Dubois, Manhattan, KS
Information Service—Simon S. Jackel, New York, NY
Manual—J. M. Albright, Park Ridge, IL
Sanitation—Philip E. Winters, Cincinnati, OH
Index—Ross Holton, Denver, CO
Nominating—Donald S. Noot, Hazelwood, MO
Membership—William O. Devilbiss, Towson, MD
Planning and Steering—Charles B. Clark, Athens, GA
Insurance—James A. Boge, Park Ridge, IL
Hotel Housing—Robert O. Benson, Chicago, IL
Educational—Edward A. Alesch, Richardson, TX
Public Relations—William A. Hoffman, Chicago, IL
Research and Study—Herman Saussele, Jr.,
St. Louis, MO
Safety Z-50—Robert C. Anderson, Port Washington, NY
Standardization of Terms—Richard E. Pyle, Fargo, ND

SPECIAL COMMITTEES

Atlantic City Booth—William H. Fife, Jr.,
Des Plaines, IL

COMMITTEES — 1978 PROGRAM

PROGRAM COMMITTEE

Frank J. Fischer, Kansas City, KS
Chairman
J. W. "Bill" Doty, N. Kansas City, MO
First Assistant Program Chairman
A. Charles Roland, III, St. Louis, MO
Second Assistant Program Chairman
John L. DeKeizer, Deerfield, IL
Byron R. Baird, Fort Worth, TX
Armand P. Cicciu, Scotch Plains, NJ
Frank H. Otway, Springfield, OH
Robert A. Fischer, Chicago, IL

PROPERTY COMMITTEE

Thomas E. Keffer, St. Anne, IL
Property Manager
Donald F. Bianchi, Arlington Heights, IL
William F. Geist, Rockford, IL
John C. La Botz, Frankfort, IL
Steven B. Smith, Oak Creek, WI
Lon D. Zimmerman, St. Louis, MO
Assistant Property Managers

BAKERY FOODS DISPLAY

J. J. Viskocil, Franklin Park, IL
Chairman
Harold D. Fortner, Franklin Park, IL
Assistant Chairman

PRESIDENT'S GET-ACQUAINTED RECEPTION

John F. Voyda, Chicago, IL—Chairman

MUSIC COMMITTEE

Walter N. Clissold, Evanston, IL—Chairman

DECEASED MEMBERS

A. V. Fontana, Brooklyn, NY
C. J. Trefzger, Peoria, IL
Joseph R. Janos, Oak Brook, IL
Elmer L. Montgomery, Denver, CO
A. W. Buchan, Concord, CA
Peter A. Butler, Port Richey, FL
William J. Davis, Cincinnati, OH
Hazel E. Riley, Casnovia, MI
Arthur A. Savenco, Vancouver, B.C., Canada
William O. Wilson, Sr., Corona Del Ray, CA
H. N. Weinstein, New York, NY
Henry C. Kayser, Minneapolis, MN
Charles A. Struble, Binghamton, NY
Horace B. Taylor, Chicago, IL
Richard E. Walsh, Edgewater, NJ
Adolph E. Link, San Carlos, CA
Albert R. Toole, South Bend, IN
Albert E. Tolley, Upper Montclair, NJ
John W. Merrell, Lees Summit, MO
William H. Wunluck, Clearwater, FL
Sanford W. Lubetkin, Hackensack, NJ

Since our Annual Meeting last year, we learned of the passing of the members listed above. Each contributed in some measure to the success of our Society and we shall miss their presence at our Annual Meetings and their support.

PAST PRESIDENTS

(Year of election shown)

1924—Richard Wahl, Indianlantic, Fla.
 1925—C. J. Patterson (deceased)
 1926 & 1927—E. B. Price (deceased)
 1928—George W. Tassie (deceased)
 1929—Gordon H. Darnell, (deceased)
 1930—Louis E. Caster (deceased)
 1931—Ross E. Anderson (deceased)
 1932—Robert L. Gerdes (deceased)
 1933—Carl S. Pickering, San Diego, Calif.
 1934—Edward M. Joy
 1935—F. B. Evers, Nashville, Tenn.
 1936—W. J. Ocken (deceased)
 1937—John Roberts, Beaumont, Tex.
 1938—Roger Brandenburg (deceased)
 1939—William Hauck (deceased)
 1940—Walter T. Moiloy (deceased)
 1941—Cecil C. Cadwell (deceased)
 1942—Wm. F. Gossadge, Louisville, Ky.
 1943—Willard H. Geller (deceased)
 1944 & 1945 Albert J. Faulhaber, Longboat Key, FL
 1946—Guy T. Shiverdecker, Kettering, Ohio
 1947—Jake M. Albright, Park Ridge, Ill.
 1948—Otto Richter, San Antonio, Tex.
 1949—Harold T. Moody, Westminster, Calif.
 1950—Don F. Copell (deceased)
 1951—Earl B. Cox, (deceased)
 1952—Fred Weberpals, Queens Village, N. Y.
 1953—M. J. Swortfiguer, Owensville, Mo.
 1954—Wallace K. Swanson, Atlanta, GA
 1955—Martin Eisenstaedt, Havertown, Pa.
 1956—Arthur G. Hackett, Venice, Fla.
 1957—Harold M. Freund, City of Industry, Calif.
 1958—Andreas F. Reising, New Orleans, La.
 1959—H. Alvin Meyer, Jackson, Miss.
 1960—Clayton C. Daley, Berwick, Pa.
 1961—Robert Nicolait, Santa Barbara, Calif.
 1962—Robert G. Dibble, Sun City Center, Fla.
 1963—John A. Wagner, Drexel Hill, Pa.
 1964—Walter T. Gase (deceased)
 1965—Irwin O. Rohrbach, Reading, PA
 1966—George H. Gugler, Sun Valley, Calif.
 1967—Lawrence E. Pile, Cleveland, Ohio
 1968—William C. Kollman, Wilton, Conn.
 1969—William H. Ziemke, San Jose, Calif.
 1970—Carl C. Hauswald, Jr., Baltimore, Md.
 1971—Robert C. Brink, Villa Hills, KY
 1972—L. J. Richter, San Antonio, Tex.
 1973—Paul W. Kamman, Park Ridge, Ill.
 1974—Charles B. Clark, Athens, Ga.
 1975—Eugene D. Swenson, St. Petersburg, FL
 1976—Donald S. Noot, Hazelwood, MO

PAST PROGRAM COMMITTEE CHAIRMEN

(Year of program shown)

1929—E. B. Nicolait (deceased)
 1930—G. Cullen Thomas (deceased)
 1931—Peter G. Pirrie (deceased)
 1932—W. E. Doty (deceased)
 1933—C. A. McDuffee (deceased)
 1934—Ross E. Anderson (deceased)
 1935—Charles P. Oliver (deceased)
 1936—R. W. Brooks (deceased)
 1937—W. E. Doty (deceased)
 1938—Harold Hall, Port Angeles, Wash.
 1939—O. S. Otting, New Smyrna Beach, Fla.
 1940—George T. Carlin, Chicago, Ill.
 1941—G. Richard Ludlow (deceased)
 1942—F. J. Coughlin, Cincinnati, Ohio
 1943—Arthur E. Grawert (deceased)
 1944—Henry P. Montminy (deceased)
 1945 & 1946—Carl W. Steinhauer (deceased)
 1947—J. H. Debs, Chicago, Ill.
 1948—Tyler R. Stevens, Cape Elizabeth, Maine
 1949—Glenn E. Hargrave, Shawnee Mission, Kans.
 1950—Charles E. Riley (deceased)
 1951—Jack S. Devanny, Lincoln, Ill.
 1952—Len P. Kenney, Milwaukee, Wis.
 1953—Elmer F. Glabe, Chicago, Ill.
 1954—Jonas E. Mapes, Wyckoff, N. J.
 1955—T. E. Lauder (deceased)
 1956—Len Franzen, Chicago, Ill.
 1957—Ray Thelen, San Diego, CA
 1958—Clifton R. Scarborough, Shawmut, Ala.
 1959—Lewis P. MacAdams, Dallas, Texas
 1960—Irwin O. Rohrbach, Reading, PA
 1961—James M. Doty, North Kansas City, Mo.
 1962—Harry D. Gardner, Albion, Mich.
 1963—Ralph E. Manewal (deceased)
 1964—Lloyd L. Fisher, Sun City Center, Fla.
 1965—Zenas Block, New York, N. Y.
 1966—William F. Schroeder (deceased)
 1967—Frank R. Schwain (deceased)
 1968—Philip W. Orth, Jr., Oak Creek, Wis.
 1969—G. N. Bollenback, Washington, D. C.
 1970—Gerald Reed, Milwaukee, Wis.
 1971—Donald K. Dubois, Manhattan, KS
 1972—Herman Saussele, Jr., St. Louis, Mo.
 1973—Richard M. Beaverson, Dallas, Tex.
 1974—Ernest O. Cain, Dallas, Tex.
 1975—Frank E. Johnson, Oak Creek, Wis.
 1976—Lyle C. Woods, Olathe, KS
 1977—Armand P. Cicciu, Scotch Plains, NJ