

COMPTON'S

A
Britannica
Publication

VOLUME

18

P-Phil
pages 1-262

Compton's Encyclopedia

and Fact-Index

1987 EDITION COMPTON'S ENCYCLOPEDIA

COPYRIGHT © 1987 by COMPTON'S LEARNING COMPANY
DIVISION OF ENCYCLOPAEDIA BRITANNICA, INC.

All rights reserved for all countries.

No part of this work may be reproduced or utilized in any form or by any means, electronic or mechanical, including photocopying, recording, or by any information storage and retrieval system, without permission in writing from the publisher.

COPYRIGHT © 1922, 1923, 1924, 1925, 1926, 1927, 1928, 1929, 1930, 1931, 1932, 1933, 1934, 1935, 1936, 1937, 1938, 1939, 1940, 1941, 1942, 1943, 1944, 1945, 1946, 1947, 1948, 1949, 1950, 1951, 1952, 1953, 1954, 1955, 1956, 1957, 1958, 1959, 1960, 1961, 1962, 1963, 1964, 1965, 1966, 1967, 1968, 1969, 1970, 1971, 1972, 1973, 1974, 1975, 1976, 1977, 1978, 1979, 1980, 1981, 1982, 1983, 1984, 1985, 1986, 1987
BY COMPTON'S LEARNING COMPANY, DIVISION OF ENCYCLOPAEDIA BRITANNICA, INC.

Library of Congress Catalog Card Number: 85-73401
International Standard Book Number: 0-85229-444-1
Printed in U.S.A.



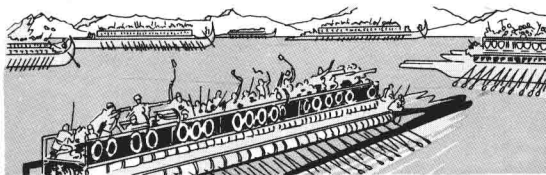
THE UNIVERSITY OF CHICAGO

COMPTON'S ENCYCLOPEDIA IS PUBLISHED WITH THE EDITORIAL ADVICE
OF THE FACULTIES OF THE UNIVERSITY OF CHICAGO

"Let knowledge grow from more to more and thus be human life enriched"

EXPLORING COMPTON'S—VOLUME 18

- What Pacific island was settled by mutineers from the *Bounty*? 15.
- What country was the Holy Land of three religions? 80.
- How did the Latin Quarter of Paris get its name? 122.
- Which prime minister of Canada received the Nobel peace prize? 150.
- In what large city is some mail delivered within about an hour through pneumatic tubes? 120.
- What animals have been displayed in circus side-shows as the "the world's largest rats"? 1.
- What materials served as the first paints? 72.
- Why did the attempts by a French company to build an Atlantic-Pacific canal end in failure? 92.
- Which brothers were the first artists to make use of "atmosphere" in their paintings? 30.
- Who was the "uncrowned king of Ireland" who lost his party leadership because of a notorious divorce case? 133.
- In what respect was the government of the Canal Zone unique? 95.
- At what period in the history of the world were the poor paid to enjoy music and drama? 205.
- What gem is actually the deposit of a sick mollusk? 148.
- What body of water holds half the water on the earth? 1.
- According to Greek legend, who was the first woman on earth? 97.
- Which species of parrot can be most easily taught to talk? 135.
- What popular nut is really an annual herb? 146.
- Who were the "Sons of Liberty"? 107.
- In the petroleum industry, what is the "Christmas tree"? 237.
- What bird has a bony crest that, after the breeding season, drops off like a deer's antlers? 156.
- In what national assembly is it a serious offense for a member to lock a door? 131.
- How long a line can be drawn by the graphite in the average pencil? 158-9.
- How is the growth of barnacles on the bottom of ship hulls prevented? 73.
- What disease, considered a minor ailment, killed Pacific islanders by the thousands? 2.
- For what purpose were the first parks in New England originally used? 125.
- What is the *tinikling*? 258.
- How many pounds of rose petals are needed to produce one pound of rose oil? 204.
- What minerals are obtained from the Dead Sea? 81.
- What tiny desert kingdom defied the Roman Empire? 84.
- How long does a patent right last? 139.
- What gives the palm tree its name? 81.
- How should a pet rabbit be picked up? 243.
- Why are pears usually picked before they are ripe? 147.
- What great musician became premier of Poland? 20.
- Why is the Pacific bluer than the Atlantic? 2.
- Which United States president was also a governor of the Philippines? 259d.
- Which renowned physician-chemist reportedly was killed when he was thrown from a window? 108.
- Where was the crossroads of the New World? 85.
- Which European city is often called the City of Light? 117.
- Who was "Old Blood and Guts"? 141.
- What canal is called the "Big Ditch"? 87.
- How did Col. William Gorgas end the malaria and yellow fever epidemics in Panama? 93.
- Must a member of the Peace Corps be a college graduate? 143.
- What large city in Pennsylvania was named for a Biblical city in Asia Minor? 250.
- What bird has a hundred eyes? 146.
- According to legend, what saint induced snakes and toads to fling themselves into the sea? 140.
- How did an island in Gatun Lake, Panama, become a natural reservation? 94.
- Why did Emperor Napoleon III order the building of wide streets in Paris? 123.
- Are valuable pearls ever found in the common edible oyster? 148-9.
- "Bulls" and "briefs" are unique to the Vatican. What are they? 100.
- What parasite invaded the Great Lakes and killed large numbers of lake trout? 114.
- May women be admitted to membership in the House of Lords of the British Parliament? 131a.
- What are the differences between a passport and a visa? 137.
- What ancient people first made paper? 100.
- Why has the penguin lost its power of flight? 162.
- What is the process of painting on wet plaster called? How is it done? 67h.
- How may a person obtain a United States passport if he has no documentary identification? 137.
- Does the law permit a pharmacist to prescribe a drug? 248a.
- Are black pepper and white pepper made from the same berry? 197.

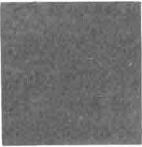


In what sea battle did the Greeks defeat the Persians, thereby saving Europe from Asian conquest? 215.

Name the two popes who, as cardinals, visited the United States and received honorary degrees from the University of Notre Dame. 142a.

Why are London policemen often called "bobbies"? 152.

KEY TO PRONUNCIATION



Pronunciations have been indicated in the body of this work only for words which present special difficulties.

Marked letters are sounded as in the following words:

cāpe, āt, fär, fāst, whät, fāll; mē, yēt, fērn, thére;

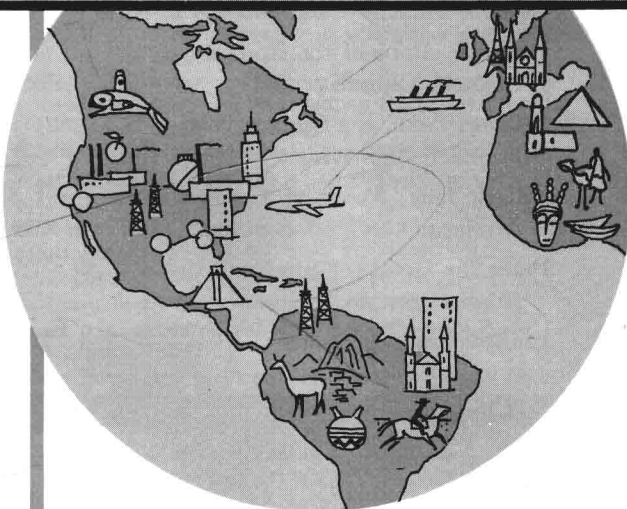
īce, bīt; rōw, wòn, fór, nōt, dọ; cūre, bŭt, rŭde, fŭll, búrn; out;

ü = French u, German ü; ġem, ġo; thin, ~~then~~;

ñ = French nasal (Jean); zh = French j (z in azure); K = German guttural ch.

HERE AND THERE IN VOLUME 18

AT ODD TIMES when you are just looking for “something interesting to read,” without any special plan in mind, this list will help you. With this as a guide, you may visit faraway countries, watch people at their work and play, meet famous persons of ancient and modern times, review history’s most brilliant incidents, explore the marvels of nature and science, play games—in short, find whatever suits your fancy of the moment. This list is not intended to serve as a table of contents, an index, or a study guide. For these purposes consult the Fact-Index and the Reference-Outlines.



Picture Highlights

Unusual Animals of the Rain Forest	10
‘Two Little Circus Girls’	22
The ‘Mona Lisa’	36
How Paint Is Made	75
Parts of the Parachute	109
Among the Birds of Paradise	110
External Parasites	115
Members of the Parrot Family	134
Springtime for Penguins	161
A Tour of the Philippines	257b

Reading for Pleasure

Pacific Ocean and Its Far-Flung Islands . . .	1
The Festival of Freedom—Passover . . .	136
How People Live Around the World . . .	190
Pets—And How to Care for Them . . .	242
Maria—Young Woman of the Philippines .	254

School and Home; Work and Play

Parent-Teacher Associations	114
Parks and Playgrounds for Recreation .	125

The Peace Corps—Helping Hand for Lands in Need	143
Pens—From Reeds to Ball-Points . . .	156
Pencils—Many Kinds for Many Purposes	158
How to Figure Percentage and Interest	198
Personality—A Combination of Traits .	216

Historical Highlights

Palestine—Holy Land of Three Great Religions	80
Panama Canal—A Short Cut Between Two Oceans	87
The Long Quest for World Peace . . .	143b
Ancient Persia—Head of a Vast Empire .	211

Famous People

Thomas Paine—"Firebrand of the American Revolution"	21
Francis Parkman—Historian of the New World	124
Pascal—Philosopher, Mathematician, and Scientist	135
Pasteur's Struggle Against Disease . . .	137

HERE AND THERE IN VOLUME 18

The Patron Saint of Ireland	139
General Patton—"Old Blood and Guts"	141
Paul VI—Pope of the Roman Catholic Church	142
William Penn, the Quaker Who Founded Pennsylvania	162
"Black Jack" Pershing, General of the Armies of the United States	210
Peter the Great—Founder of the Russian Empire	226
Philip, Kings of France	252



The Plant and Animal Kingdoms

Palms of Many Lands	81
The Rare Pandas of Asia	97
Parasitic Enemies of Man, Plants, and Animals.	113
Parrots—Favorite Pets in Zoos and Homes	133
Juno's Bird	145
Peanut—Useful Product of the Soil	146
Pearls—Gems of the Sea	148
The Comical Penguin	160
Pepper—World's Most Popular Spice	197

The Wide World of Facts

Parliament—Rule by the People	129
British Parliament—The "Mother of Parliaments"	131
"The Meeting Will Please Come to Order"	132a
Passports and Visas	137
Patriotic Societies of the United States	140

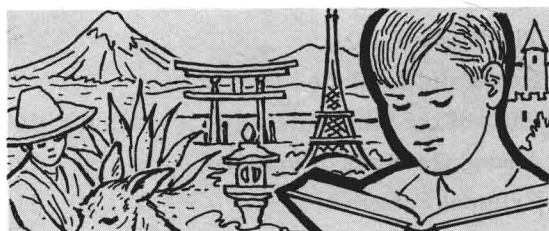
Perfumery—An Ancient and a Modern Art	203
Forests of Stone	227
The Worldwide Petroleum Industry	229

Marvels of Science and Invention

Paints—Coatings for Decoration and Protection	72
The Story of Paper and Pulp	100
Parachute—Life Preserver for Airmen	109
The Production and Distribution of Petroleum	234
Pharmacy—The Science of Making Medicines	248a

The Arts

Paderewski—Musician and Statesman	20
Painting—The Artist's View of Life and Nature	23
Gordon Parks—Poet of the Camera	124
Pavlova—Incomparable Ballerina	142b
Pepys, England's Greatest Diarist	197b



At Home and Abroad

Pakistan—The Moslem Nation Carved from British India	77
Republic of Panama—Crossroads of the New World	85
Paraguay—Underdeveloped Frontier Land of South America	111
Paris—Beautiful City of Light	117
Peking, the City of Walls	153
Pennsylvania—The Keystone State	163
Peru's Long History and Modern Progress	221
Philadelphia—The Stately City of William Penn	250
The Republic of the Philippines	253

PACA. The paca is the second largest of all rodents. Only the capybara is larger. A full-grown paca may weigh almost 25 pounds and may be $2\frac{1}{2}$ feet long from the tip of its nose to the end of its body. Its tiny tail, about an inch in length, is hidden by the long, coarse fur that hangs from its rump. Circus sideshows displaying these animals have usually touted them as "the world's largest rats." A paca's coat ranges from brown to black with four rows of white dots along each side. The underparts are white to buff color.

Pacas are found from central Mexico to southern Brazil. They live in burrows dug in riverbanks, or under tree roots or stones. Pacas swim well and take

to the water when danger threatens. They hunt at night for food which includes leaves, roots, and fallen fruit. Pacas are hunted for their flesh which many persons consider a delicacy. Pacas make up the genus *Cuniculus*.

THESE ARTICLES ARE IN THE FACT-INDEX

Pace College
Pachomius, Saint
Pachuca, Mexico
Pachyderm
Pachysandra
Pacific, University of
the

Pacifica, Calif.
Pacific College
Pacific Grove, Calif.
Pacific Islands, Trust
Territory of the
Pacific Lutheran
University

PACIFIC OCEAN and Its Far-Flung Islands

PACIFIC OCEAN. The vast Pacific is the world's largest ocean. It covers a third of the earth. No one knows how many islands rise from its blue waters. In the Philippines alone there are more than 7,000 islands and islets.

Until recent years most people knew little, if anything, about the Pacific islands. They were cut off from the rest of the world by vast stretches of sea. This was especially true of the islands in the heart of the Pacific. People called them the South Sea Isles. They dreamed of them as a tropical paradise of palm-fringed coral shores and drowsy sun.

Late in 1935 American clipper planes began trans-Pacific flights. They made air bases of little-known Guam, Midway, and Wake islands (see Guam; Wake Island). Most of the rest remained nearly unknown.

When World War II broke out in the Pacific in 1941 the islands became vitally important, especially to the United States (see World War II). Government survey ships, often under fire, had to chart the strange, coral-ridden island waters. Thousands of young Americans fought to seize islands for air and naval bases and army transport harbors.

This great development of air and sea transport has now largely conquered the size of the Pacific. Its far-flung islands are no longer isolated. They have a new and important part in world affairs. To understand the Pacific, we should first learn something of its geography, people, and history.

Its Name and Its Geography

The Portuguese explorer Ferdinand Magellan reached the great ocean in 1520. He called it "Pacific," because he found it calm after his voyage around

South America (see Magellan). True, it does have violent storms, but generally fewer than the Atlantic.

The giant Pacific stretches 9,300 miles from the Arctic Circle at Bering Strait to the South Polar zone. Along the equator it reaches nearly halfway around the globe. Its area is nearly 64 million square miles—greater than the entire land area of the world. It holds half the water on the earth.

The eastern limits of the Pacific are sharply marked by the west coasts of the Americas. The only major breaks are the Aleutian Islands and Lower California.

The western limits are very different. From north to south, they are split by many peninsulas and islands. The resulting bays and arms of the Pacific are named as separate seas. To the north are Bering Sea, Sea of Okhotsk, Sea of Japan, Yellow Sea, East China Sea, and South China Sea. Southward the large

Mists partly enshroud the basalt mountains of Moorea, one of the Society Islands in French Polynesia. The island was explored and named by Capt. James Cook in 1769.



PACIFIC OCEAN

islands of the East Indies (Indonesia) break up the ocean into the Celebes Sea, Java Sea, and Timor Sea. The continent of Australia marks off the Coral Sea and Tasman Sea.

In this article we set the western limits of the Pacific at Japan, the Philippines, and New Guinea. We use this dividing line because the island groups near the Asian mainland (as well as New Zealand, off the coast of Australia) are classified as coastal archipelagoes rather than Pacific islands. The story of their geography and peoples—and the story of Australia—is told in separate articles (*see* Australia; East Indies; New Zealand).

Why the Pacific Is so Blue

The Pacific is the world's deepest ocean. Its average depth is more than two and one-half miles. It is deepest in the Mariana Trench, an undersea canyon southeast of the Mariana Islands. Soundings of about 36,000 feet have been made there. If Mount Everest, the earth's highest mountain, were set down in the Trench's deepest part, its tip would be more than 7,000 feet below the surface of the sea.

The Pacific Ocean is bluer than the Atlantic because the surface color of the Atlantic is screened by greater masses of microscopic plant and animal life. This microscopic life is called plankton. Plankton live on nitrogen compounds from decaying matter. The Pacific has a lower proportion of these compounds than the Atlantic.

Enchantment of the South Seas

The mighty Pacific washes the shores of five continents—North America, South America, Asia, Australia, and Antarctica. Its waters mingle in the southeast with the Atlantic Ocean and in the southwest with the Indian Ocean. It is not on the shores of continents or in the coastal islands, however, that the soul of the great Pacific is found. It lies far out where the fabled South Sea Islands are scattered over the huge ocean like stars in the sky.

Here great disturbances at the heart of the earth caused mountains and volcanoes to rise above the water. For hundreds of years tiny coral creatures have worked and died to make thousands of ring-shaped islands called atolls (*see* Coral).

The air that sweeps the South Sea Islands is fragrant with flowers and spice. Bright warm days follow clear cool nights, and the rolling swells break in a never-ending roar on the shores. Overhead the slender coconut palms whisper their drowsy song.

When white men first came to the Pacific islands, they found that the people living there were like happy children. They were tall men and beautiful women who seemed not to have a care in the world. Coconut palms and breadfruit trees grew at the doors of their huts. The ocean was filled with turtles and fish, ready for the net. The islanders had little need for clothing. There was almost no disease.

Cruel and bloody wars sometimes broke out between neighboring tribes, and canoe raids were some-

times made on nearby islands. The strong warriors enjoyed fighting. Many of the islanders were cannibals, who cooked and ate the enemies they killed. This was part of their law and religion. These savages, however, were usually friendly, courteous, and hospitable. Some of the early explorers were so fascinated with the Pacific islands that they never returned to their own countries. They preferred to stay.

The Pacific islands have changed a great deal since white men first landed on their shores. The peaceful-looking islands are still there, but the people who once lived in such carefree happiness are vanishing. On islands where thousands lived a hundred years ago, only a few score are left.

The Blight of the White Man

White men brought diseases to the islands—tuberculosis, smallpox, leprosy, and many others. Because the islanders had always been free from disease, they had no power to resist infection. They were easy victims of the white man's diseases. Even measles, which is considered a minor ailment, killed the islanders by the thousands.

This is the tragedy of the Pacific islands. In another hundred years very few pure-blooded members will be left of what was once called "the noblest of all primitive races."

Unsolved Mystery of the Pacific

The story of the Pacific contains puzzling chapters. Only recently have archaeologists begun to solve some of the mysteries (*see* Easter Island). Scattered through the islands from one side of the ocean to the other are remains of an ancient race

WHAT IS THE SECRET OF THIS STATUE?

The purpose of this and of other strange stone images like it on Easter Island is still unknown. Only in 1957 did scientists discover how they could have been moved from the quarry.

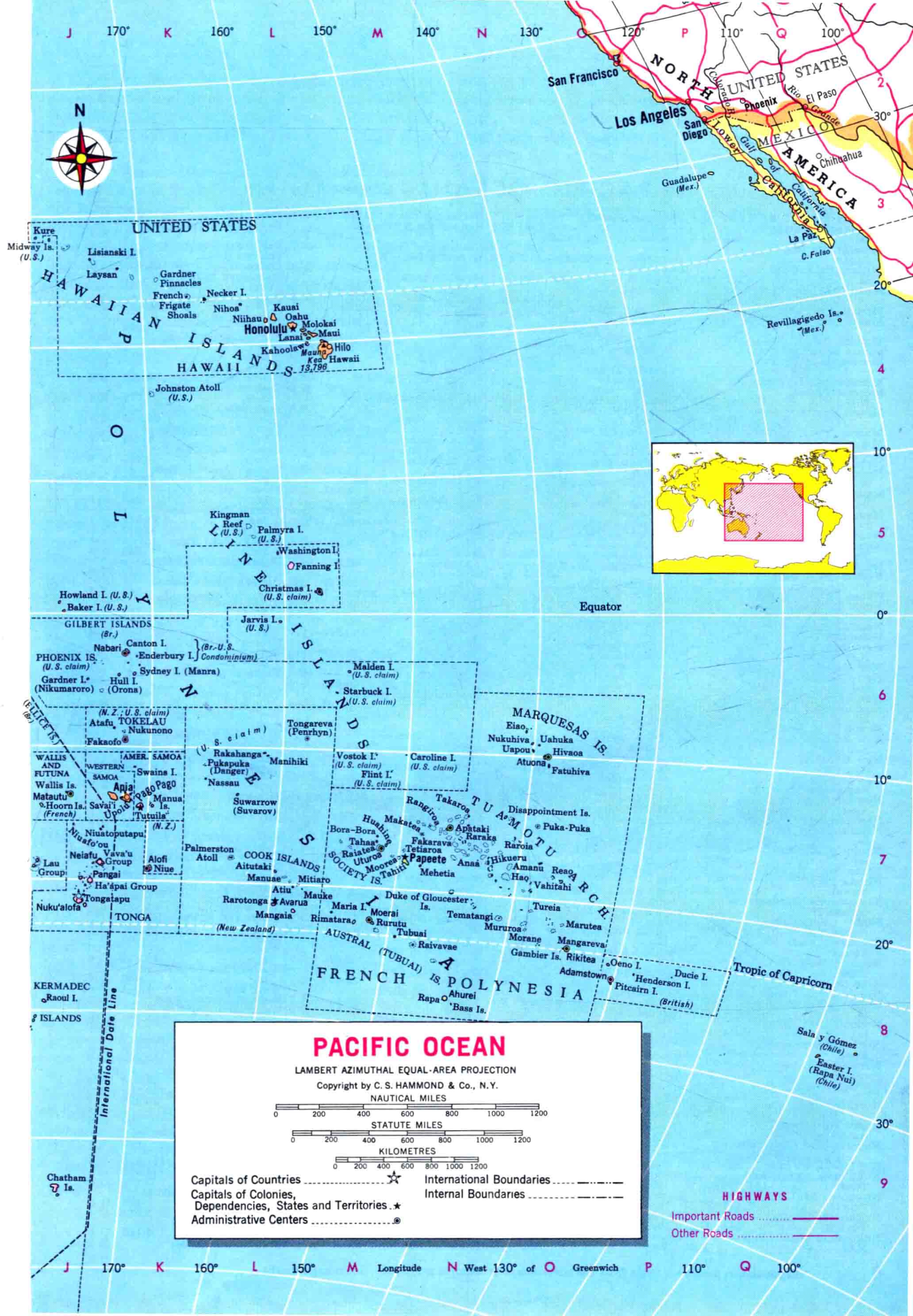


PACIFIC OCEAN*

Abalangi (atoll), Gilbert Is.	3,296	H 5	Broken Hill, Aust.	28,160	E 9	Fraser (island), Aust.		F 8	Kolepom (isl.), Indon.	D 6
Abemama (atoll), Gilbert Is.	2,300	H 5	Broom, Aust.	2,049	C 7	Fremantle, Aust.	26,036	B 9	Kolonia (cap.), Pacific Is.	F 5
Adamstown (cap.), Pitcairn Is.	74	N 8	Bunbury, Aust.	18,550	B 9	French Frigate (shoals), Hawaii		K 3	Koror, Pacific Is.	D 5
Adelaide, Aust.	†857,196	D 9	Bundaberg, Aust.	29,100	E 8	French Polynesia	138,000	L 8	Kosciusko (mt.), Aust.	F 9
Admiralty (isls.), Papua N.G.	15,765	E 6	Butaritari (atoll), Gilbert Is.	2,971	H 5	Frome (lake), Aust.		E 9	Kosrae (isl.), Pacific Is.	G 5
Agaña (cap.), Guam	2,119	E 4	Cairns, Aust.	35,200	E 7	Funafuti (atoll), (cap.), Tuvalu	871	J 6	Kure (isl.), Hawaii	J 3
Agrihan (isl.), Pacific Is.	48	E 4	Canberra (cap.), Aust.	†209,094	F 9	Furueaux (isls.), Aust.	957	E 9	Kwajalein (atoll), Pacific Is.	G 5
Ahau, Fiji	368	M 8	Canton (isl.), Gilbert Is.	355	J 6	Gaferut (isl.), Pacific Is.		E 5	La Grange, Aust.	C 7
Ahuriri, Fr. Poly.	368	M 8	Cape York (pen.), Aust.	4,242	B 8	Gairdner (lake), Aust.		D 9	Lae, Papua N.G.	E 6
Ailinglapalap (atoll), Pacific Is.	1,100	G 5	Carnarvon, Aust.	4,242	B 8	Gambier (isls.), Fr.	566	N 8	Lamotrek (atoll), Pacific Is.	E 5
Ailuk (atoll), Pacific Is.	335	H 4	Caroline (isl.), Gilbert Is.	62,731	E 5	Gardner (isl.), Gilbert Is.		J 6	Lanai (island), Hawaii	2,204
Altape, Papua N.G.	1,035	E 6	Caroline (isls.), Pacific Is.	62,731	E 5	Gardner Pinnacles (isl.), Hawaii		K 3	Lau Group (isls.), Fiji	L 7
Alututaki (atoll), Cook Is.	2,414	K 7	Carpentaria (gulf), Aust.	7,518	E 7	Gascoyne (riv.), Aust.		B 8	Launceston, Aust.	32,953
Alamagan (isl.), Pacific Is.	25	E 4	Cato (isl.), Aust.	1,507	F 7	Geelong, Aust.	†129,651	E 9	Laverton, Aust.	†790
Albany, Aust.	12,250	B 9	Charleville, Aust.	3,948	E 8	Geraldton, Aust.	15,950	B 8	Laysan (isl.), Hawaii	J 3
Albury, Aust.	32,250	E 9	Charters Towers, Aust.	7,518	E 7	Gibson (des.), Aust.		C 8	Leeuwin (cape), Aust.	B 9
Alice Springs, Aust.	14,149	D 8	Chatham (isls.), N.Z.	730	J 10	Gilbert (isls.), Gilbert Is.		H 6	Leveque (cape), Aust.	C 7
Alofi (cap.), Niue	957	K 7	Chesterfield (isls.), N.Z.	172,500	H 10	Gilbert Islands	52,500	J 6	Levuka, Fiji	1,397
Amadeus (lake), Aust.		D 8	Chichester (isl.), Japan	1,507	E 2	Gisborne, N.Z.	29,200	H 6	Lifu (isl.), New Cal.	7,125
Amanu (atoll), Fr. Poly.	104	N 7	Chiseul (isl.), Sol. Is.	9,467	F 3	Grafton, Aust.	16,600	F 5	Line (isls.)	1,472
Ambrim (isl.), New Hebr.	3,670	G 7	Christmas (isl.), Gilbert Is.	674	L 5	Great Australian (bight), Aust.		C 9	Liansaki (isl.), Hawaii	21,650
American Samoa	31,500	J 7	Christmas (isl.), Gilbert Is.	674	L 5	Great Barrier (reef), Aust.		E 7	Lithgow, Aust.	12,750
Anaa (atoll), Fr. Poly.	375	M 7	Christmas (isl.), Gilbert Is.	674	L 5	Great Sandy (des.), Aust.		C 8	Little Makin (atoll), Gilbert Is.	1,445
Anatani (isl.), Pacific Is.		E 4	Christmas (isl.), Gilbert Is.	674	L 5	Great Victoria (des.), Aust.		C 8	Longreach, Aust.	3,455
Anietyum (isl.), New Hebr.	246	H 8	Christmas (isl.), Gilbert Is.	674	L 5	Greenwich (Kapingamarangi) (atoll), Pacific Is.	389	F 10	Lord Howe (island), Aust.	223
Angra (isl.), Pacific Is.	277	D 5	Christmas (isl.), Gilbert Is.	674	L 5	Greyhound, N.Z.	7,750	G 5	Lord Howe (Ontong Java) (isl.), Sol. Is.	1,082
Apataki (isl.), Fr. Poly.	118	M 7	Christmas (isl.), Gilbert Is.	674	L 5	Groote Eylandt (isl.), Aust.	2,059	D 7	Louisade (arch.), Papua N.G.	11,451
Apia (cap.), W. Samoa	†32,616	J 7	Christmas (isl.), Gilbert Is.	674	L 5	Guadalcanal (isl.), Sol. Is.	46,619	F 7	Loyalty (isls.), New Cal.	13,378
Arafura (sea)		D 6	Christmas (isl.), Gilbert Is.	674	L 5	Guam (island)	115,000	E 4	Luganville, New Hebr.	5,148
Armidale, Aust.	20,300	F 9	Christmas (isl.), Gilbert Is.	674	L 5	Gympie, Aust.	10,900	F 8	Macdonnell (ranges), Aust.	
Arnhem (cape), Aust.		D 7	Christmas (isl.), Gilbert Is.	674	L 5	Haapai Group (islands), Tonga	10,812	J 8	Mackay, Aust.	20,550
Arnhem Land (reg.), Aust.	4,563	D 7	Christmas (isl.), Gilbert Is.	674	L 5	Haha (isl.), Japan		D 3	Mackay (lake), Aust.	
Arno (atoll), Pacific Is.	1,120	H 5	Christmas (isl.), Gilbert Is.	674	L 5	Hall (isls.), Pacific Is.	855	F 5	Madang, Papua N.G.	
Arorae (atoll), Gilbert Is.	1,626	H 6	Christmas (isl.), Gilbert Is.	674	L 5	Halls Creek, Aust.	678	C 7	Maitland, Aust.	16,866
Ashburton (riv.), Aust.		B 8	Christmas (isl.), Gilbert Is.	674	L 5	Hamilton, N.Z.	90,100	H 9	Majuro (atoll), Pacific Is.	33,200
Asuncion (isl.), Pacific Is.		E 4	Christmas (isl.), Gilbert Is.	674	L 5	Hao (atoll), Fr. Poly.	1,268	N 6	Makatea (isl.), Fr. Poly.	78
Atafu (atoll), Tokelau Is.	572	J 6	Christmas (isl.), Gilbert Is.	674	L 5	Hastings, N.Z.	31,500	H 9	Makin (Butaritari) (atoll), Gilbert Is.	2,971
Atiu (isl.), Cook Is.	1,312	L 8	Christmas (isl.), Gilbert Is.	674	L 5	Hawaii (isl.)	63,468	L 4	Malaika (isl.), Sol. Is.	50,912
Atuona, Fr. Poly.	753	M 7	Christmas (isl.), Gilbert Is.	674	L 5	Hawaii (state), U.S.	887,000	K 4	Malden (isl.), Gilbert Is.	
Auckland, N.Z.	153,100	H 9	Christmas (isl.), Gilbert Is.	674	L 5	Hawaiian (isls.)	889,000	J 3	Malekula (isl.), New Hebr.	9,207
Auki, Sol. Is.	1,926	G 6	Christmas (isl.), Gilbert Is.	674	L 5	Hickueru (atoll), Fr. Poly.	91	M 7	Maloelap (atoll), Pacific Is.	
Austral (isls.), Fr. Poly.	5,079	L 8	Christmas (isl.), Gilbert Is.	674	L 5	Hilo, Hawaii	26,353	L 4	Mangaia (isl.), Cook Is.	1,530
Australia	13,923,991	C 8	Christmas (isl.), Gilbert Is.	674	L 5	Hivaoa (isl.), Fr. Poly.	1,115	N 6	Mangareva (isl.), Fr. Poly.	
Australian Capital Terr., Aust.	223,571	F 9	Christmas (isl.), Gilbert Is.	674	L 5	Hobart, Aust.	†131,524	E 10	Manihiki (isl.), Cook Is.	263
Avarua (cap.), Cook Is.	2,297	L 8	Christmas (isl.), Gilbert Is.	674	L 5	Honiara (cap.), Sol. Is.	14,942	F 6	Manokwari, Indon.	14,689
Babelthup (isl.), Pacific Is.	3,771	D 5	Christmas (isl.), Gilbert Is.	674	L 5	Hoorn (islands), Wallis Is.	2,725	J 7	Manra (Sydney) (isl.), Gilbert Is.	
Bairiki (cap.), Gilbert Is.	1,777	H 5	Christmas (isl.), Gilbert Is.	674	L 5	Howland (island), Hawaii		J 5	Manua (isls.), Amer. Samoa	2,112
Baker (island)	39,778	E 9	Christmas (isl.), Gilbert Is.	674	L 5	Hughenden, Aust.	2,856	E 8	Manuae (isl.), Cook Is.	
Ballarat, Aust.		H 6	Christmas (isl.), Gilbert Is.	674	L 5	Hull (isl.), Gilbert Is.	1,916	E 7	Manus (isl.), Papua N.G.	11,512
Banks (isls.), New Hebr.	2,322	G 7	Christmas (isl.), Gilbert Is.	674	L 5	Huon (gulf), Papua N.G.		J 6	Marble Bar, Aust.	394
Barkly (tableland), Aust.		D 7	Christmas (isl.), Gilbert Is.	674	L 5	Huon (isls.), New Cal.		G 7	Marcus (isl.), Japan	
Barlee (lake), Aust.		B 8	Christmas (isl.), Gilbert Is.	674	L 5	Ifalik (atoll), Pacific Is.		E 5	Maré (isl.), New Cal.	3,789
Barrow (isl.), Aust.		B 8	Christmas (isl.), Gilbert Is.	674	L 5	Invercargill, N.Z.	50,600	H 10	Maria (isl.), Fr. Poly.	
Bass (isls.), Fr. Poly.		M 8	Christmas (isl.), Gilbert Is.	674	L 5	Ipswich, Aust.	67,500	F 8	Mariana (isls., excl. Guam)	14,333
Bass (str.), Aust.		E 9	Christmas (isl.), Gilbert Is.	674	L 5	Iwo Jima (isl.), Japan		E 3	Mariana Trench	
Bathurst (isl.), Aust.	895	C 7	Christmas (isl.), Gilbert Is.	674	L 5	Jaluit (atoll), Pacific Is.	925	G 5	Marquesas (isls.)	5,593
Belep (isls.), New Cal.	692	G 7	Christmas (isl.), Gilbert Is.	674	L 5	Jarvis (island)	1,007	K 6	Marshall (isls.), Pacific Is.	
Bellona (reefs), New Cal.		G 8	Christmas (isl.), Gilbert Is.	674	L 5	Johnston (atoll)		K 4	Marutea (atoll), Fr. Poly.	
Bendigo, Aust.	32,007	E 9	Christmas (isl.), Gilbert Is.	674	L 5	Joseph Bonaparte (gulf), Aust.		C 7	Maryborough, Aust.	19,000
Beru (atoll), Gilbert Is.	2,318	H 6	Christmas (isl.), Gilbert Is.	674	L 5	Kahoolawe (isl.), Hawaii		L 4	Matautu (cap.), Wallis Is.	566
Bikar (atoll), Pacific Is.		H 4	Christmas (isl.), Gilbert Is.	674	L 5	Kalagoolie, Aust.	9,500	B 9	Maui (isl.), Hawaii	38,691
Bikini (atoll), Pacific Is.	75	G 4	Christmas (isl.), Gilbert Is.	674	L 5	Kandavu (isl.), Fiji	9,169	H 7	Mauke (isl.), Cook Is.	710
Bismarck (arch.), Papua N.G.	251,673	E 6	Christmas (isl.), Gilbert Is.	674	L 5	Kangaroo (isl.), Aust.	3,156	D 9	Mauna Kea (mt.), Hawaii	
Blackall, Aust.	1,755	E 8	Christmas (isl.), Gilbert Is.	674	L 5	Kapingamarangi (atoll), Pacific Is.	389	F 5	Meekatharra, Aust.	927
Blue Mts., Aust.	36,727	E 9	Christmas (isl.), Gilbert Is.	674	L 5	Katherine, Aust.	3,127	D 7	Mehetia (isl.), Fr. Poly.	
Bonin (isls.), Japan	1,507	E 3	Christmas (isl.), Gilbert Is.	674	L 5	Kauai (isl.), Hawaii	29,524	L 3	Melanesia (isls.)	3,666,000
Bora Bora (isl.), Fr. Poly.	2,196	L 7	Christmas (isl.), Gilbert Is.	674	L 5	Kiarieng, Papua N.G.	3,301	E 6	Melbourne, Aust.	†2,661,400
Bougainville (isl.), Papua N.G.	78,318	F 6	Christmas (isl.), Gilbert Is.	674	L 5	Kermadec (islands), N.Z.		J 8	Melville (isl.), Aust.	542
Boulder, Aust.	†12,922	C 9	Christmas (isl.), Gilbert Is.	674	L 5	Kieta, Papua N.G.	2,699	F 6	Merauke, Indon.	21,366
Bounty (isls.), N.Z.		H 10	Christmas (isl.), Gilbert Is.	674	L 5	Killing (isl.), Pacific Is.	360	G 5	Merir (isl.), Pacific Is.	
Bourail, New Cal.	3,145	G 8	Christmas (isl.), Gilbert Is.	674	L 5	Kili (isl.), Aust.	2,680	E 10	Micronesia (isls.)	273,000
Bowen, Aust.	5,880	E 7	Christmas (isl.), Gilbert Is.	674	L 5	Kingman (reef), Aust.		K 5		
Brisbane, Aust.	†958,800	F 8	Christmas (isl.), Gilbert Is.	674	L 5	Kingston, Aust.		G 8		

*All population figures are taken from the latest census or estimate available. †Including suburbs.





PACIFIC OCEAN

LAMBERT AZIMUTHAL EQUAL-AREA PROJECTION

Copyright by C. S. HAMMOND & Co., N. Y.

NAUTICAL MILES

0 200 400 600 800 1000 1200

STATUTE MILES

0 200 400 600 800 1000 1200

KILOMETRES

0 200 400 600 800 1000 1200

- Capitals of Countries★
- Capitals of Colonies, Dependencies, States and Territories. ★
- Administrative Centers●
- International Boundaries- - - - -
- Internal Boundaries- - - - -

HIGHWAYS

- Important Roads—
- Other Roads—

PACIFIC OCEAN* — Continued

Midway (Is.), U.S.	2,000	J 3	Nukunono (atoll), Tokelau	366	J 6	Recherche (arch.), Aust.	C 9	Timor (sea)	C 7
Mili (atoll), Pacific						Rennell (isl.), Sol.		Tinian (isl.), Pacific	
Is.	538	H 5	Nukuoro (atoll), Pacific	245	F 5	Rikitea, Fr. Poly.	1,132	Is.	714
Minami Iwo (isl.), Japan		D 3	Nullarbor (plain), Aust.		C 9	Rimataru (isl.), Fr.		Tobi (isl.), Pacific Is.	48
Mitilaro (isl.), Cook		L 7	Oahu (isl.), Hawaii	630,528	L 3	Poly.	738	Tokelau (isls.)	1,625
Is.	305		Oceania (isl.), Gilbert		G 6	Rockhampton, Aust.	51,500	Tonga	92,000
Moen (isl.), Pacific Is.	9,568	F 5	Is.	2,314	O 8	Roma, Aust.	5,870	Tongareva (atoll), Cook	531
Moera, Fr. Poly.	651	L 8	Oeno (isl.), Pitcairn Is.			Rongelap (atoll), Pacific	165	Is.	
Mokil (atoll), Pacific Is.		G 5	Onotoa (atoll), Gilbert	1,997	H 8	Is.		Tongatapu (isls.), Tonga	54,437
Is.	321	L 3	Is.	349	B 8	Rota (isl.), Pacific Is.	1,104	Toowoomba, Aust.	62,900
Molokai (isl.), Hawaii	5,261	B 8	Onslow, Aust.		G 6	Rotuma (isl.), Fiji	3,826	Torrens (lake), Aust.	
Monte Bello (isls.), Aust.			Ontong Java (isls.), Sol.	1,082	D 8	Rururu (isl.), Fr.	1,514	Torres (isls.), New Hebr.	213
Moorea (isl.), Fr. Poly.	4,842	N 8	Is.	229	E 9	Saipan (isl.), Pacific	12,385	Torres (strait)	
Morane (isl.), Fr. Poly.		E 6	Oodnadatta, Aust.	24,830	C 7	Sala y Gómez (isl.), Chile		Townsville, Aust.	82,500
N.G.	†3,299		Orange, Aust.		F 5	Sala y Gómez (isl.), Chile		Trobriland (isls.), Papua	11,278
Mount Gambier, Aust.	19,292	D 9	Ord (riv.), Aust.			Samara, Papua	1,948	N.G.	
Murray (riv.), Aust.		E 9	Oroluk (isl.), Pacific Is.		6	N.G.		Truk (isls.), Pacific	24,216
Mururoa (isl.), Fr. Poly.		M 8	Orona (Hull) (isl.), Gilbert Is.			Samoa, American	31,500	Is.	
Musgrave (ranges), Aust.			Pacific Islands, Terr.		F 5	Samoa, Western	151,500	Tuamotu (arch.), Fr.	8,226
Nabari, Gilbert Is.	355	J 6	of the	130,000	E 4	San Cristobal (isl.), Sol.		Poly.	1,422
Namatanai, Papua			Pagan (isl.), Pacific Is.	57	J 7	Santa Cruz (isls.), Sol.	11,212	Tubuai (isl.), Fr.	
N.G.	†2,766	F 6	Pago Pago (cap.), Amer.	2,451	D 5	Santa Isabel (isl.), Sol.	5,421	Tubuai (Austral) (isls.), Fr. Poly.	5,079
Namounito (atoll), Pacific Is.		G 5	Palau (isls.), Pacific	12,673	K 7	Is.	10,420	Tureia (atoll), Fr.	848
Namorik (atoll), Pacific		E 5	Palmerston (atoll), Cook Is.	53	H 10	Sarigan (isl.), Pacific Is.		Poly.	
Is.	431	H 7	Palmerston North, N.Z.	57,100	K 5	Satawal (isl.), Pacific	354	Tutuila (isl.), Amer.	24,548
Nandi, Fiji	6,938	H 7	Palmyra (isl.), U.S.		J 7	Savai'i (isl.), W.	40,572	Samoa	5,900
Nanumea (atoll), Tuvalu	977	H 6	Pangai, Tonga	1,838		Is.		Uahuka (isl.), Fr.	358
Napier, N.Z.	42,900	H 9	Papeete (cap.), Fr. Poly.		M 7	Samoa		Poly.	
Nassau (isl.), Cook		K 7	Papua (gulf), Papua N.G.	25,342	E 6	Schouten (isls.), Indon.	110,148	Uapou (isl.), Fr. Poly.	1,590
Is.	113	G 6	Papua New Guinea	2,900,000	E 6	Is.		Is.	
Nauru	7,100	G 7	Parace Vela (isl.), Japan		D 3	Senyavin (isls.), Pacific	17,259	Ujelang (atoll), Pacific	342
Ndeni (isl.), Sol. Is.		K 3	Peiliu (isl.), Pacific	657	D 5	Simpson (des.), Aust.		Is.	
Necker (isl.), Hawaii	2,873	H 10	Is.		L 6	Society (isls.), Fr.	100,270	Upolu (isl.), W.	710
Nelafu, Tonga	30,400	F 6	Penrhyn (Tongareva) (atoll), Cook Is.	531	B 9	Sohano, Papua	2,158	Samoa	105,889
Nelson, N.Z.		G 8	Perth, Aust.	†787,300	G 7	N.G.		Uturoa, Fr. Poly.	2,681
New Britain (isl.), Papua		G 8	Pes, Sol. Is.		J 6	Solomon (isls.)	280,000	Uvea (isl.), New Cal.	
N.G.	163,405		Phoenix (isls.), Gilbert Is.			Solomon (sea)		Vahitahi (atoll), Fr. Poly.	2,374
New Caledonia	134,000	F 9	Phins, Isle of, New Cal.	1,159	G 8	Sonsorol (isls.), Pacific	200,000	Is.	65
(isl.)	126,436	F 6	Pinglap (atoll), Pacific			Is.	56	Vaitupu (atoll), Tuvalu	948
Newcastle, Aust.	†363,010	E 6	Pitcairn (islands)	641	G 5	Sorol (atoll), Pacific	8	Is.	
New Georgia (isls.), Sol.	16,473	F 6	Polynesia (isls.)	1,287,000	O 8	Sorong, Indon.	23,763	Vanua Levu (isl.), Fiji	267
Is.		F 6	Ponape (isl.), Pacific	14,552	K 7	South Australia (state), Aust.	1,237,885	Is.	84,892
New Guinea (island)		G 7	Is.		F 5	South East (cape), Aust.		Vava'u Group (isls.), Tonga	15,065
New Hanover (isl.), Papua	7,829	F 6	Port Augusta, Aust.	13,092	D 9	South (island), N.Z.	842,300	Victoria (state), Aust.	15,065
N.G.		E 9	Port Hedland, Aust.	7,229	B 7	Spencer (gulf), Aust.		Vila (cap.), New Hebr.	†17,367
New Hebrides (isls.)	99,325	G 10	Port Lincoln, Aust.	10,272	D 9	Starbuck (island), Gilbert Is.		Viti Levu (isl.), Fiji	388,645
New Ireland (isl.), Papua N.G.	22,245	F 5	Port Moresby (cap.), Papua N.G.	117,000	E 6	Stewart (isl.), N.Z.	410	Is.	
New South Wales (state), Aust.	4,954,355	D 5	Port Pirie, Aust.	15,005	D 9	Suva (cap.), Fiji	68,622	Volcano (isls.), Japan	
New Zealand	3,200,000	G 10	Puka-Puka (atoll), Fr.	101	N 7	Is.		Vostok (isl.), Gilbert Is.	
Ngatik (atoll), Pacific		K 3	Poly.		K 7	Suvarrow (Suvarov) (atoll), Cook Is.		Wagga Wagga, Aust.	32,510
Is.	408	D 5	Pukapuka (atoll), Cook	786	F 5	Is.	3,942	Is.	
Ngulu (atoll), Pacific		K 3	Pulap (atoll), Cook Is.	316	E 5	Swains (isl.), Amer.	74	Waigao (isl.), Indon.	150
Is.	8	J 6	Pulo Anna (isl.), Pacific		D 5	Sydney, Aust.	†2,922,760	Wallis (isls.), N.Z.	9,000
Nihoa (isl.), Hawaii		E 6	Pulusuk (atoll), Pacific	265	F 5	Sydney (isl.), Gilbert Is.	38	Wanganui, N.Z.	35,750
Niuhau (isl.), Hawaii	237	J 7	Is.		L 7	Tabiteuea (atoll), Gilbert		Warrenmool, Aust.	19,810
Niuhau (isl.), Hawaii			Puluwat (atoll), Pacific	435	E 5	Tahaa (isl.), Fr.	3,539	Washington (isl.), Gilbert	458
Niuhau (isl.), Hawaii			Is.		L 7	Tahiti (isl.), Fr.	79,494	Is.	
Niuhau (isl.), Hawaii			Queensland (state), Aust.	2,039,501	F 6	Takaroa (atoll), Fr.	150	Wau, Papua N.G.	1,914
Niuhau (isl.), Hawaii			Rabaul, Papua	62,329	M 7	Tamworth, Aust.	25,360	Welliesley (isls.), Aust.	
Niuhau (isl.), Hawaii			N.G.		L 7	Tanapag, Pacific		Wellington (cap.), N.Z.	143,400
Niuhau (isl.), Hawaii			Ralatea (isl.), Fr.	6,406	M 8	Is.	1,146	Is.	
Niuhau (isl.), Hawaii			Raivavae (isl.), Fr.	1,021	G 5	Tanna (isl.), New Hebr.	5,869	Wessel (isls.), Aust.	
Niuhau (isl.), Hawaii			Rakahanga (atoll), Cook	283	M 8	Is.		Western Australia (state), Aust.	1,186,638
Niuhau (isl.), Hawaii			Ralik Chain (isls.), Pacific Is.	10,692	K 7	Taongi (atoll), Pacific		Is.	
Niuhau (isl.), Hawaii			Rangiroa (atoll), Fr.	937	G 5	Is.	17,129	Western Samoa	151,500
Niuhau (isl.), Hawaii			Is.		M 7	Tarawa (atoll), Gilbert		N.G.	
Niuhau (isl.), Hawaii			Raoul (isl.), N.Z.	384	M 8	Is.		Whangarei, N.Z.	15,015
Niuhau (isl.), Hawaii			Rapa (isl.), Fr. Poly.			Tasmania (state), Aust.		Whyalla, Aust.	33,426
Niuhau (isl.), Hawaii			Rapa Nui (Easter) (island), Chile	1,598		Taveuni (isl.), Fiji	409,543	Willis (islets), Aust.	
Niuhau (isl.), Hawaii			Is.			Tematangi (isl.), Fr.	7,041	Willuna, Aust.	992
Niuhau (isl.), Hawaii			Raraka (atoll), Fr.	34		Poly.		Woleai (atoll), Pacific Is.	608
Niuhau (isl.), Hawaii			Rarua (atoll), Fr.	63		Tennant Creek, Terr.	2,236	Is.	
Niuhau (isl.), Hawaii			Is.			Islands of the Pacific	130,000	Wollongong, Aust.	†211,240
Niuhau (isl.), Hawaii			Rarotonga (isl.), Cook	9,811		Is.		Wonthaggi, Aust.	4,438
Niuhau (isl.), Hawaii			Is.			Tetiaroa (atoll), Fr.		Woomera, Aust.	2,958
Niuhau (isl.), Hawaii			Ratak Chain (isls.), Pacific Is.	14,334		Poly.		Wotje (atoll), Pacific Is.	425
Niuhau (isl.), Hawaii			Reao (atoll), Fr.	256		Tikopia (isl.), Sol. Is.		Is.	
Niuhau (isl.), Hawaii			Is.			Is.	1,115	Wyndham, Aust.	1,515
Niuhau (isl.), Hawaii						Timaru, N.Z.	28,900	Yap (isls.), Pacific	5,140
Niuhau (isl.), Hawaii								Is.	
Niuhau (isl.), Hawaii								York (cape), Aust.	

*All population figures are taken from the latest census or estimate available. †Including suburbs.

of skilled builders. Ruins have been discovered of altars, tombs, and dwellings made of great blocks of stone fitted together without mortar. Traces exist of houses built out over the sea, canals, and huge piers and breakwaters.

On tiny Easter Island—about 2,350 miles from the coast of Chile in South America and 1,300 miles from any other inhabited island—are great walls and platforms 30 feet high, with pedestals on top. Upon these once stood the huge statues which now lie nearby. The largest is 37 feet high. Although crumbling with age, these statues still show resemblance to the human form. On the other side of the island is a 70-foot figure, half cut out from the volcanic rock. Some of the stones are traced with geometrical patterns and animal shapes.

In 1957 an expedition to the island, led by the Norwegian explorer Thor Heyerdahl, discovered the probable method used to move the giant statues. Much of the story of the builders, however, remains unknown. (See also Easter Island.)

Island Groups in the Pacific

The Pacific islands, often called by the general name Oceania, form a chain some 8,000 miles long, stretching from the Philippines and New Guinea to distant Easter Island. The islands fall into three great divisions, according to their position and the character of their people. These divisions in turn are divided into smaller clusters, each with its own name.

The coastal islands of Asia form two separate branches. The southern chain, which lies entirely below the equator, forms a crescent. This chain is known as *Melanesia* ("islands of the blacks"). It begins east of New Guinea with the Admiralty Islands and two larger individual islands, New Ireland and New Britain. Then the chain swings southeast, through the Solomon Islands, the Santa Cruz Islands, the New Hebrides Islands, and the Loyalty Islands. East of the New Hebrides is the Fiji group.

The northern chain is called *Micronesia* ("small islands"). It stretches eastward from the Philippines through the Palau Islands, the Mariana Islands and Guam, the Caroline Islands, and the Marshall Islands. Then the chain dips southeast through the Gilbert Islands (on the equator) and the Ellice Islands, forming a crescent much larger than that of Melanesia.

The eastern ends of these two crescents meet and then open out into the scattered islands known as *Polynesia* ("many islands"). Beginning east of the Fiji Islands are the Tonga (or Friendly) Islands and the Samoa group. Farther east are the Cook Islands and the Society Islands (which include Tahiti), then the Tuamotu Archipelago and the Marquesas Islands. Far north of the equator lie the Hawaiian Islands.

On these three large divisions live three distinct peoples with different racial origins and cultures.

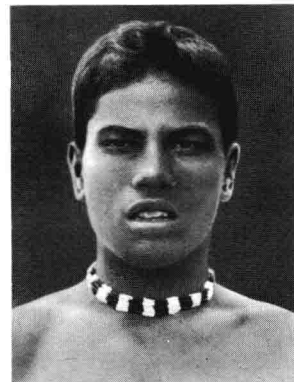
How these peoples came to the islands is not exactly known. It is generally believed that all the islands were settled by people from Asia. They passed down the Malay Peninsula and into the islands beyond in waves that spread wider and wider. Melanesia, north and east of New Guinea, was probably settled first. Micronesia and Polynesia were inhabited later.

It is remarkable that the Melanesians, who settled on islands close to the mainland of Asia, are

PACIFIC ISLAND PEOPLES



This Pribilof islander (left), with his Mongol features, lives in the far northeast. The pretty Hawaiian girl (right) has wavy hair.



The Micronesia boy (left) lives on one of the Gilbert Islands. The brown-skinned Samoan warrior (right) wears a ceremonial headdress.



Fuzzy-haired and dark, this semi-Melanesian (left) lives in the Fiji Islands. The Melanesian chieftain (right) is a true Negroid type.



POLYNESIA'S MOST VALUABLE CROP

Islanders eat the meat of the coconut and drink its milk. Dried coconut meat yields copra, and the husk yields cord.

the most primitive people in the Pacific. In contrast to them, the Polynesians—who went farther in search of their homes—are in many ways the most civilized according to American standards.

Melanesia—The “Black Islands”

The natives of Melanesia, like those of New Guinea, have very dark skin, thick lips, broad, flat noses, and fuzzy hair. They are frequently called Oceanic Negroids because they resemble African Negroes. Melanesians, in general, are shorter than other Pacific islanders. In fact, some of the tribes in the interior of New Guinea and on the New Hebrides are Pygmies. In the western end of Melanesia strong traces of Papuan and Malay ancestry can be seen in the natives. To the east, notably in the Fijis, the Melanesians are mixed with the Polynesians.

Melanesians are not such accomplished sailors and fishermen as are the other Pacific islanders, but they are better farmers. They raise taro plant, sweet potatoes and yams, bananas, squashes, and pumpkins. Domestic pigs and small game provide meat.

Although their social and political customs are crude, Melanesians are skilled in wood carving and other decorative arts. In former times they were feared by neighboring islanders and explorers because of their cannibalism—which was associated with their religious and warlike rituals. Cannibalism has become practically extinct.

Micronesia—The “Small Islands”

The people of Micronesia are a mixed group. Those of the western islands resemble the Malays or the Filipinos. They are small in stature and have coppery brown skins. They include the natives of the Palau Islands, the Marianas, and the western Carolines. The Malay influence is apparent in their

customs. The chewing of betel nut—a habit common in southwestern Asia—prevails here, but is unknown farther eastward. The people of eastern Micronesia, including the eastern Carolines, the Marshalls, the Gilberts, and the Ellice group, are more nearly like the neighboring Polynesians in appearance and culture.

In contrast both to Melanesia and Polynesia, these small islands have meager resources. There is little soil on the coral foundations of the islands. Although the people are less savage than the Melanesians, they lead primitive lives. In Micronesia are remains of great stone structures erected by the earliest inhabitants of these islands.

Polynesia—Its People and How They Live

The Polynesians—about whom so many romantic tales have been written—are tall, well-built people. The color of their skin ranges from light brown to almost white. Their black hair is straight or wavy. The women keep their hair well-groomed and scented with coconut oil. Their lips are full and their noses are thick but not flat. In general, the men are handsome, and the women are often beautiful.

Polynesians—or Kanakas, as they are sometimes called—are hospitable, intelligent people. Their political and social organization was once the highest in the Pacific. In their happy and indolent life they long ago lost the desire to work and, consequently, much of their skill in manual arts. They are completely at home in the water or upon it. Among them may be found some of the strongest swimmers, most skillful fishermen, and boldest sailors in the world. These abilities may be a social inheritance from their ancestors. In small boats and without maps or compasses their ancestors had daringly sailed over vast stretches of ocean to these remote islands.

Polynesian Culture

Much of the early Polynesian culture has disappeared, largely because of the influence of European and American visitors and settlers. Missionaries brought Christianity to replace many of the ancient rites, and traders brought manufactured articles as substitutes for native products. Two natural resources, however, continue to be important in the lives of Polynesians—fish and coconuts.

In days past the Polynesians had a rich oral literature made up of legends, myths, and religious chants. Little of this literature remains today, however, and there are almost no traces of their elaborate social organization. Before Christianity was brought to them, the religion of the Polynesians was marked by elaborate rituals based upon faith in magic (*see Magic*). The practice of taboos, or religious prohibitions, was widespread. Taboos were used in place of laws to protect the persons of chiefs, to shut out the people from certain temples or houses, and for scores of other purposes. To eat taboo food, to lay hands on a taboo person, to enter a taboo dwelling brought upon the offender, according to native belief, grave misfortune or even death.

STRAND PLANTS

SEEDED BY THE SEA,
THESE PLANTS GROW ON
ALL ISLANDS IN THE
TROPICAL
PACIFIC...

...COCONUTS TAKE ROOT
ON CORAL REEF...



CASUARINA OR
IRONWOOD

PANDANUS
OR SCREW PINE

...MANGROVES FORM
THICKETS IN QUIET
BAYS AND ESTUARIES

RAIN FOREST

IT NEEDS YEAR-
ROUND RAIN...

...TREES ARE BROAD-LEAVED, EVERGREEN...

Betelnut
Palm



IN THE DARKNESS
PLANTS OFTEN BECOME
VINES CREEPING
TOWARD THE LIGHT
... e.g. Rattan Palm ...

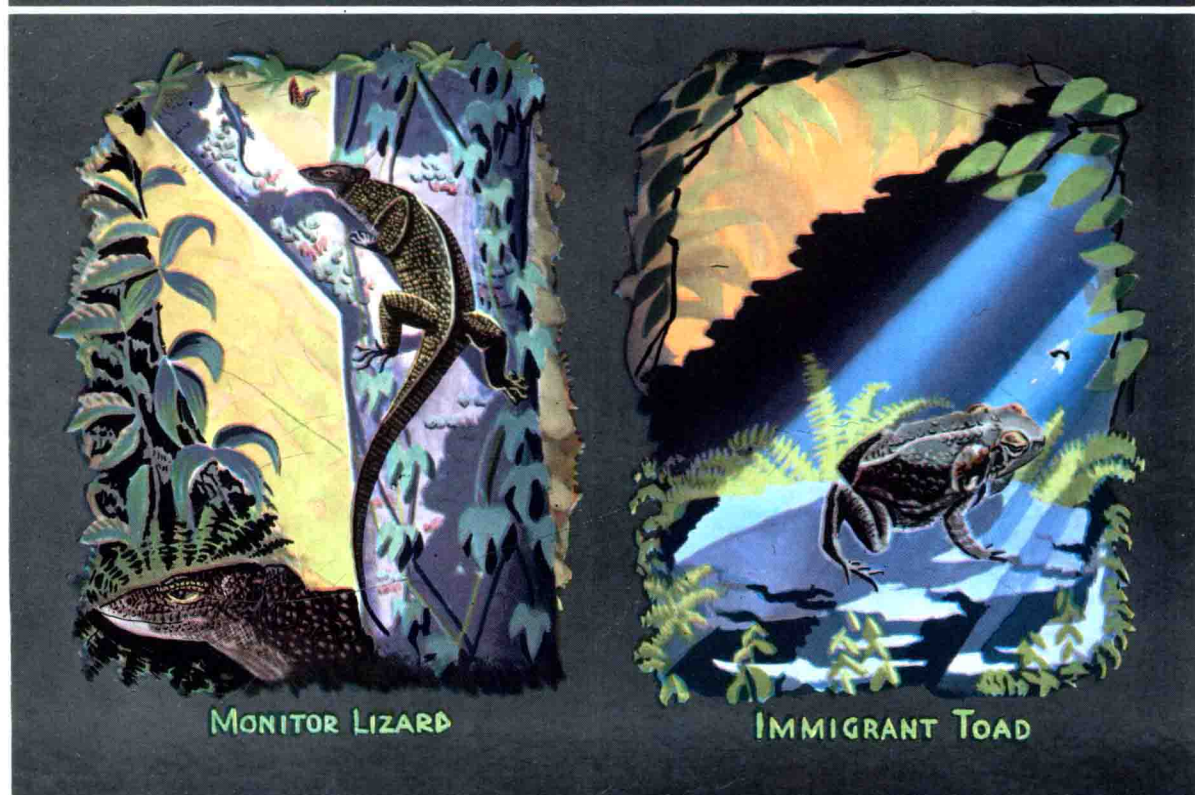
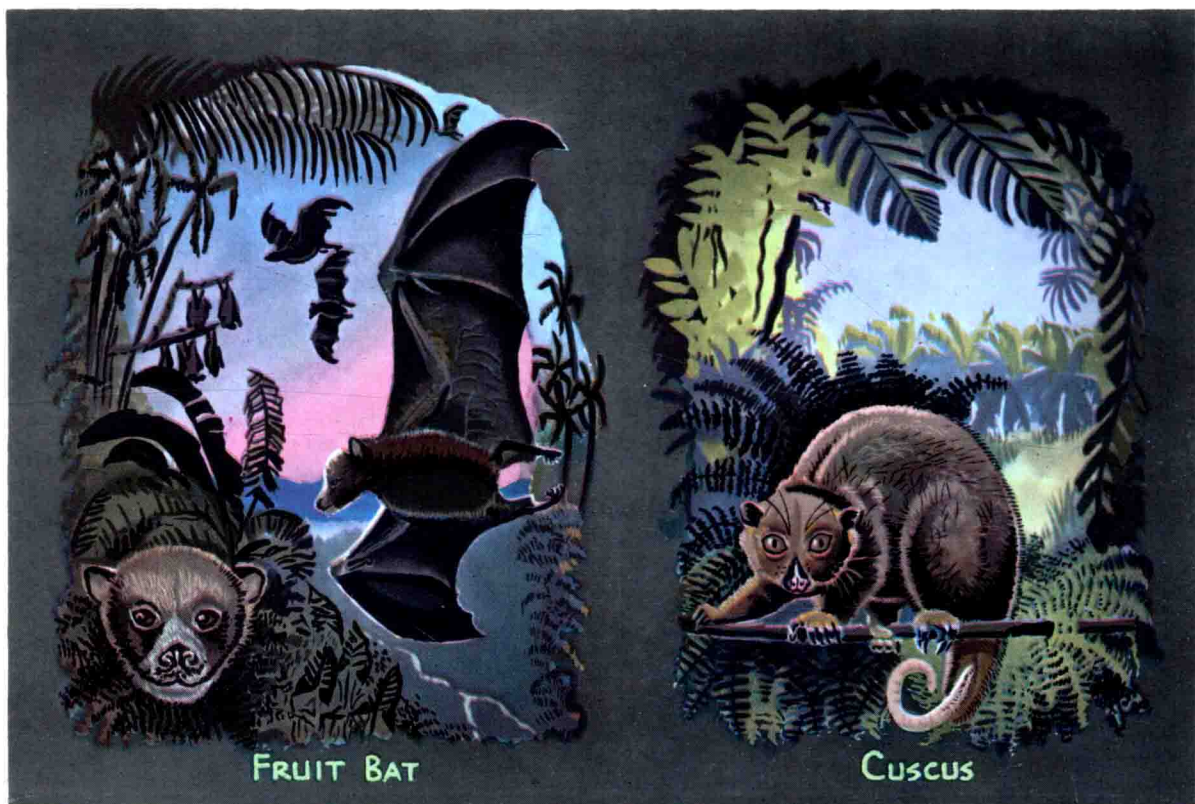
BANYAN...
VINE GROWS
INTO TREE...

IN THE MOUNTAINS
TREES GIVE WAY
TO TREE FERNS AND
BAMBOO BRAKES

W.H.B.

SOME CONTRASTS IN PLANT LIFE

Here are shown the two types of vegetation typical of the larger islands of the tropical Pacific—the strand plants and those of the dense rain forests. The seeds of the former often fall into the water and so have been carried from island to island by winds and ocean currents.



UNUSUAL ANIMALS OF THE RAIN FOREST

The fruit bats are giants of their kind with wingspreads of three feet or more. The cuscus is a marsupial resembling the opossum in habits. The monitor is the largest of all lizards, reaching a length of eight feet. Immigrant toads were imported from South America into many of the islands to kill insects and have greatly multiplied.