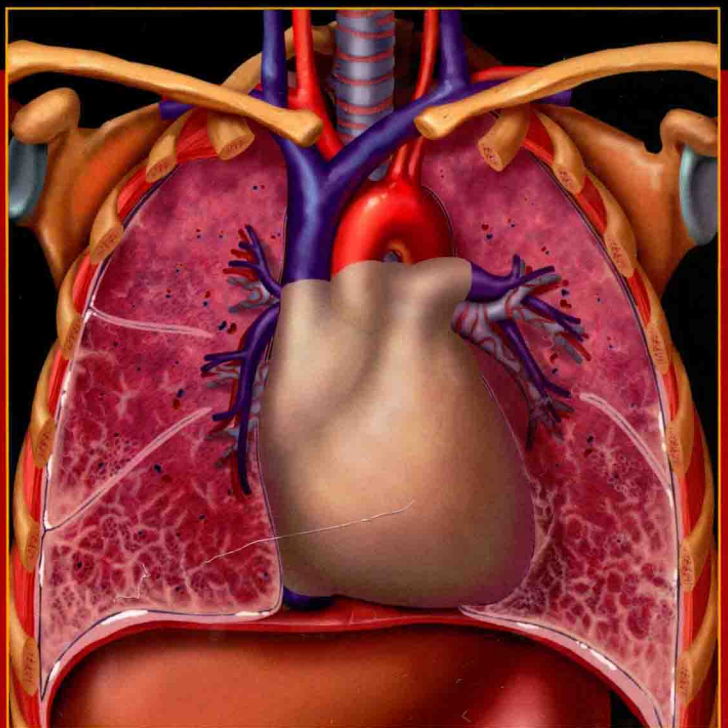
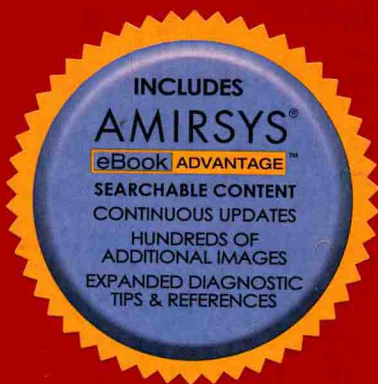


SECOND EDITION

DIAGNOSTIC IMAGING

CHEST



ROSADO-DE-CHRISTENSON
Abbott • Martínez-Jiménez

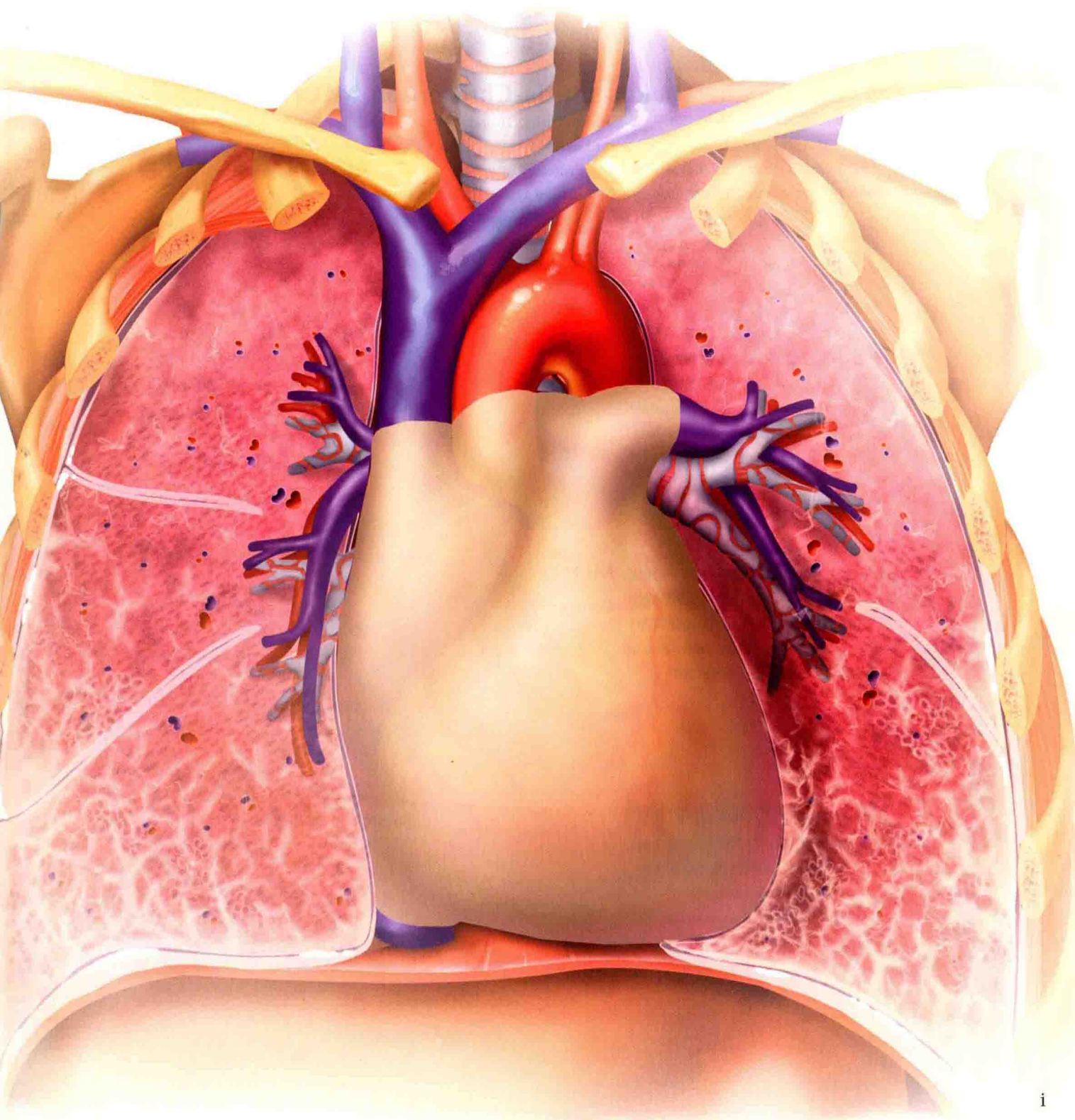
Healey • Chung • Wu
Carter • Lichtenberger III
Winer-Muram • Kanne
Franquet • Ternes • Strollo



DIAGNOSTIC IMAGING

CHEST

SECOND EDITION





AMIRSYS®

Names you know. Content you trust.®

Second Edition

© 2012 Amirsys, Inc.

Compilation © 2012 Amirsys Publishing, Inc.

All rights reserved. No portion of this publication may be reproduced, stored in a retrieval system, or transmitted, in any form or media or by any means, electronic, mechanical, optical, photocopying, recording, or otherwise, without prior written permission from the respective copyright holders.

Printed in Canada by Friesens, Altona, Manitoba, Canada

ISBN: 978-1-931884-75-4

Notice and Disclaimer

The information in this product ("Product") is provided as a reference for use by licensed medical professionals and no others. It does not and should not be construed as any form of medical diagnosis or professional medical advice on any matter. Receipt or use of this Product, in whole or in part, does not constitute or create a doctor-patient, therapist-patient, or other healthcare professional relationship between the copyright holders and any recipient. This Product may not reflect the most current medical developments, and the copyright holders (individually and jointly), make no claims, promises, or guarantees about accuracy, completeness, or adequacy of the information contained in or linked to the Product. The Product is not a substitute for or replacement of professional medical judgment. The copyright holders, and their affiliates, authors, contributors, partners, and sponsors, individually and jointly, disclaim all liability or responsibility for any injury and/or damage to persons or property in respect to actions taken or not taken based on any and all Product information.

In the cases where drugs or other chemicals are prescribed, readers are advised to check the Product information currently provided by the manufacturer of each drug to be administered to verify the recommended dose, the method and duration of administration, and contraindications. It is the responsibility of the treating physician relying on experience and knowledge of the patient to determine dosages and the best treatment for the patient.

To the maximum extent permitted by applicable law, the copyright holders provide the Product AS IS AND WITH ALL FAULTS, AND HEREBY DISCLAIMS ALL WARRANTIES AND CONDITIONS, WHETHER EXPRESS, IMPLIED OR STATUTORY, INCLUDING BUT NOT LIMITED TO, ANY (IF ANY) IMPLIED WARRANTIES OR CONDITIONS OF MERCHANTABILITY, OF FITNESS FOR A PARTICULAR PURPOSE, OF LACK OF VIRUSES, OR ACCURACY OR COMPLETENESS OF RESPONSES, OR RESULTS, AND OF LACK OF NEGLIGENCE OR LACK OF WORKMANLIKE EFFORT. ALSO, THERE IS NO WARRANTY OR CONDITION OF TITLE, QUIET ENJOYMENT, QUIET POSSESSION, CORRESPONDENCE TO DESCRIPTION OR NON-INFRINGEMENT, WITH REGARD TO THE PRODUCT. THE ENTIRE RISK AS TO THE QUALITY OF OR ARISING OUT OF USE OR PERFORMANCE OF THE PRODUCT REMAINS WITH THE READER.

The respective copyright holders, individually and jointly, disclaim all warranties of any kind if the Product was customized, repackaged or altered in any way by any third party.

Library of Congress Cataloging-in-Publication Data

Rosado de Christenson, Melissa L.

Diagnostic imaging. Chest. -- 2nd ed. / Melissa L. Rosado de Christenson.

p. ; cm. -- (Diagnostic imaging)

Chest

Rev. ed. of: Diagnostic imaging. Chest / Jud W. Gurney ... [et al.]. 1st ed. c2006.

Includes bibliographical references and index.

ISBN 978-1-931884-75-4

I. Diagnostic imaging. II. Title. III. Title: Chest. IV. Series: Diagnostic imaging (Salt Lake City, Utah)

[DNLM: 1. Radiography, Thoracic. 2. Thoracic Diseases--radiography. 3. Diagnostic Imaging--methods. WF 975]

617.5'40754--dc23

2011044926

DIAGNOSTIC IMAGING

CHEST

SECOND EDITION

Melissa L. Rosado-de-Christenson, MD, FACR

Section Chief, Thoracic Imaging
Saint Luke's Hospital of Kansas City
Professor of Radiology
University of Missouri-Kansas City
Kansas City, Missouri

Gerald F. Abbott, MD

Associate Professor of Radiology
Harvard Medical School
Massachusetts General Hospital
Boston, Massachusetts

Jonathan H. Chung, MD

Assistant Professor of Radiology
National Jewish Health
Denver, Colorado

Santiago Martínez-Jiménez, MD

Associate Professor of Radiology
University of Missouri-Kansas City
Saint Luke's Hospital of Kansas City
Kansas City, Missouri

Carol C. Wu, MD

Instructor of Radiology
Harvard Medical School
Massachusetts General Hospital
Boston, Massachusetts

Terrance T. Healey, MD

Assistant Professor of Diagnostic Imaging
Alpert Medical School
Brown University
Providence, Rhode Island

Brett W. Carter, MD

Director and Section Chief, Thoracic Imaging
Baylor University Medical Center
Dallas, Texas

John P. Lichtenberger III, MD

Chief of Cardiothoracic Imaging
David Grant Medical Center
Travis Air Force Base, California
Assistant Professor of Radiology
Uniformed Services University of the Health Sciences
Bethesda, Maryland

Tomás Franquet, MD, PhD

Director of Thoracic Imaging
Hospital de Sant Pau
Associate Professor of Radiology
Universitat Autònoma de Barcelona
Barcelona, Spain

Helen T. Winer-Muram, MD

Professor of Clinical Radiology
Indiana University School of Medicine
Indianapolis, Indiana

Tyler H. Ternes, MD

Chest Imaging Fellow
Saint Luke's Hospital of Kansas City
University of Missouri-Kansas City
Kansas City, Missouri

Jeffrey P. Kanne, MD

Associate Professor of Thoracic Imaging
Vice Chair of Quality and Safety
Department of Radiology
University of Wisconsin School of Medicine and Public Health
Madison, Wisconsin

Diane C. Strollo, MD, FACR

Clinical Associate Professor
University of Pittsburgh Medical Center
Pittsburgh, Pennsylvania

Megan R. Saettele, MD

Resident Physician
University of Missouri-Kansas City
Kansas City, Missouri

To my dearest husband Dr. Paul J. Christenson, to our beloved daughters Jennifer and Heather, and to the rest of my family for their constant love and support—and particularly for their immense assistance and forbearance during the course of this project.

MRdC

PREFACE

I am immensely grateful to the Amirsys team for the opportunity to serve as lead author of the second edition of *Diagnostic Imaging: Chest*. I am especially humbled to be selected to carry on the legacy of Jud W. Gurney, MD, an outstanding leader, author, and educator, whose untimely passing in early 2009 deprived the thoracic imaging community of one of its brightest stars. Throughout the writing of this book, my coauthors and I endeavored to produce a body of work that Jud would have been proud of.

The second edition is similar to the first in both style and appearance, with a succinct bulleted text style and image-rich depictions of thoracic diseases. However, in response to suggestions from the readers, this edition presents an updated content organization based on both the anatomic location of disease and the type of disease process. The work is further enhanced by a wealth of new material that includes:

- Sixteen new illustrated section introductions that set the stage for the specific diagnoses that follow
- Three new sections that define and illustrate the Fleischner Society glossary of terms for thoracic imaging, classic signs in chest imaging, and the many faces of atelectasis
- A new section on post-treatment changes in the thorax including effects of various surgeries, radiotherapy, chemotherapy, and ablation procedures
- 353 chapters (148 new chapters) supplemented with updated references
- 2,586 images and 1,395 e-book images including radiographic, CT, MR, and PET/CT images
- Updated graphics illustrating the anatomic/pathologic basis of various imaging abnormalities

I was fortunate to recruit a world-class team of authors who delivered meticulously researched content in all areas of thoracic imaging and two outstanding medical editors who scrutinized each chapter for accuracy and clarity. I gratefully acknowledge the tireless work of the Amirsys production staff who sustained me through each step of the work and whose edits and suggestions enhanced each and every chapter. I also want to acknowledge the contribution of our outstanding team of illustrators whose artistry greatly enriched the book. I thank Drs. Gerry Abbott, Santiago Martínez-Jiménez, and Paula Woodward for their wisdom and guidance during my inaugural experience as an Amirsys lead author.

We proudly present the second edition of *Diagnostic Imaging: Chest*.

Melissa L. Rosado-de-Christenson, MD, FACR
Section Chief, Thoracic Imaging
Saint Luke's Hospital of Kansas City
Professor of Radiology
University of Missouri-Kansas City
Kansas City, Missouri

ACKNOWLEDGEMENTS

Text Editing

Dave L. Chance, MA
Arthur G. Gelsinger, MA
Matthew R. Connelly, MA
Lorna Moring, MS
Rebecca L. Hutchinson, BA
Angela M. Green, BA

Image Editing

Jeffrey J. Marmorstone, BS
Lisa A.M. Steadman, BS

Medical Editing

Julia Prescott-Focht, DO
Jeff Kunin, MD

Illustrations

Lane R. Bennion, MS
Richard Coombs, MS
Laura C. Sesto, MA
R. Annie Gough, CMI
Brenda L. McArthur, MA

Art Direction and Design

Laura C. Sesto, MA
Mirjam Ravneng, BA

Publishing Lead

Katherine L. Riser, MA



AMIRSYS®

Names you know. Content you trust.®

TABLE OF CONTENTS

SECTION 1 Overview of Chest Imaging

Introduction and Overview

Approach to Chest Imaging	1-2
<i>Melissa L. Rosado-de-Christenson, MD, FACP</i>	

Illustrated Terminology

Approach to Illustrated Terminology	1-8
<i>Melissa L. Rosado-de-Christenson, MD, FACP</i>	
Acinar Nodules	1-10
<i>Melissa L. Rosado-de-Christenson, MD, FACP & Tyler H. Ternes, MD</i>	
Air Bronchogram	1-11
<i>Melissa L. Rosado-de-Christenson, MD, FACP & Tyler H. Ternes, MD</i>	
Air-Trapping	1-12
<i>Melissa L. Rosado-de-Christenson, MD, FACP & Tyler H. Ternes, MD</i>	
Airspace	1-13
<i>Melissa L. Rosado-de-Christenson, MD, FACP & Tyler H. Ternes, MD</i>	
Architectural Distortion	1-14
<i>Melissa L. Rosado-de-Christenson, MD, FACP & Tyler H. Ternes, MD</i>	
Bulla/Bleb	1-15
<i>Melissa L. Rosado-de-Christenson, MD, FACP & Tyler H. Ternes, MD</i>	
Cavity	1-16
<i>Melissa L. Rosado-de-Christenson, MD, FACP</i>	
Centrilobular	1-17
<i>Melissa L. Rosado-de-Christenson, MD, FACP</i>	
Consolidation	1-18
<i>Melissa L. Rosado-de-Christenson, MD, FACP</i>	
Cyst	1-19
<i>Melissa L. Rosado-de-Christenson, MD, FACP</i>	
Ground-Glass Opacity	1-20
<i>Melissa L. Rosado-de-Christenson, MD, FACP</i>	
Honeycombing	1-21
<i>Melissa L. Rosado-de-Christenson, MD, FACP</i>	
Interlobular Septal Thickening	1-22
<i>Melissa L. Rosado-de-Christenson, MD, FACP</i>	

Intralobular Lines	1-23
<i>Melissa L. Rosado-de-Christenson, MD, FACP</i>	
Mass	1-24
<i>Melissa L. Rosado-de-Christenson, MD, FACP</i>	
Miliary Pattern	1-25
<i>Melissa L. Rosado-de-Christenson, MD, FACP</i>	
Mosaic Attenuation	1-26
<i>Melissa L. Rosado-de-Christenson, MD, FACP</i>	
Nodule	1-27
<i>Melissa L. Rosado-de-Christenson, MD, FACP</i>	
Perilymphatic Distribution	1-28
<i>Melissa L. Rosado-de-Christenson, MD, FACP</i>	
Pneumatocele	1-29
<i>Melissa L. Rosado-de-Christenson, MD, FACP</i>	
Reticular Pattern	1-30
<i>Melissa L. Rosado-de-Christenson, MD, FACP</i>	
Secondary Pulmonary Lobule	1-31
<i>Melissa L. Rosado-de-Christenson, MD, FACP</i>	
Traction Bronchiectasis	1-32
<i>Melissa L. Rosado-de-Christenson, MD, FACP</i>	
Tree-in-Bud Pattern	1-33
<i>Melissa L. Rosado-de-Christenson, MD, FACP</i>	

Chest Radiographic and CT Signs

Approach to Chest Radiographic and CT Signs	1-34
<i>Santiago Martínez-Jiménez, MD</i>	
Air Crescent Sign	1-40
<i>Santiago Martínez-Jiménez, MD</i>	
Cervicothoracic Sign	1-41
<i>Santiago Martínez-Jiménez, MD</i>	
Comet Tail Sign	1-42
<i>Santiago Martínez-Jiménez, MD</i>	
CT Halo Sign	1-43
<i>Santiago Martínez-Jiménez, MD</i>	
Deep Sulcus Sign	1-44
<i>Santiago Martínez-Jiménez, MD</i>	
Fat Pad Sign	1-45
<i>Santiago Martínez-Jiménez, MD</i>	
"Finger in Glove" Sign	1-46
<i>Santiago Martínez-Jiménez, MD</i>	

Hilum Convergence Sign	1-47
<i>Santiago Martínez-Jiménez, MD</i>	
Hilum Overlay Sign	1-48
<i>Santiago Martínez-Jiménez, MD</i>	
Incomplete Border Sign	1-49
<i>Santiago Martínez-Jiménez, MD</i>	
Luftsichel Sign	1-50
<i>Santiago Martínez-Jiménez, MD</i>	
Reverse Halo Sign	1-51
<i>Santiago Martínez-Jiménez, MD</i>	
Rigler Sign	1-52
<i>Santiago Martínez-Jiménez, MD</i>	
S-Sign of Golden	1-53
<i>Santiago Martínez-Jiménez, MD</i>	
Signet Ring Sign	1-54
<i>Santiago Martínez-Jiménez, MD</i>	
Silhouette Sign	1-55
<i>Santiago Martínez-Jiménez, MD</i>	

Atelectasis and Volume Loss

Approach to Atelectasis and Volume Loss	1-56
<i>Gerald F. Abbott, MD</i>	
Right Upper Lobe Atelectasis	1-60
<i>Gerald F. Abbott, MD & Brett W. Carter, MD</i>	
Middle Lobe Atelectasis	1-61
<i>Gerald F. Abbott, MD & Brett W. Carter, MD</i>	
Right Lower Lobe Atelectasis	1-62
<i>Gerald F. Abbott, MD & Brett W. Carter, MD</i>	
Left Upper Lobe Atelectasis	1-63
<i>Gerald F. Abbott, MD & Brett W. Carter, MD</i>	
Left Lower Lobe Atelectasis	1-64
<i>Gerald F. Abbott, MD & Brett W. Carter, MD</i>	
Complete Lung Atelectasis	1-65
<i>Gerald F. Abbott, MD & Brett W. Carter, MD</i>	
Subsegmental Atelectasis	1-66
<i>Gerald F. Abbott, MD & Brett W. Carter, MD</i>	
Relaxation and Compression Atelectasis	1-67
<i>Gerald F. Abbott, MD & Brett W. Carter, MD</i>	
Rounded Atelectasis	1-68
<i>Gerald F. Abbott, MD & Brett W. Carter, MD</i>	
Cicatricial Atelectasis	1-69
<i>Gerald F. Abbott, MD & Brett W. Carter, MD</i>	

Airways

Tracheal Bronchus and Other Anomalous Bronchi	2-6
<i>Tomás Franquet, MD, PhD</i>	
Paratracheal Air Cyst	2-10
<i>Terrance T. Healey, MD</i>	
Bronchial Atresia	2-12
<i>Melissa L. Rosado-de-Christenson, MD, FACP & Tyler H. Ternes, MD</i>	
Tracheobronchomegaly	2-16
<i>Jonathan H. Chung, MD</i>	
Congenital Lobar Overinflation	2-18
<i>Melissa L. Rosado-de-Christenson, MD, FACP & Tyler H. Ternes, MD</i>	
Congenital Pulmonary Airway Malformation	2-20
<i>Melissa L. Rosado-de-Christenson, MD, FACP & Tyler H. Ternes, MD</i>	

Lung

Extralobar Sequestration	2-22
<i>Melissa L. Rosado-de-Christenson, MD, FACP & Tyler H. Ternes, MD</i>	
Intralobar Sequestration	2-24
<i>Melissa L. Rosado-de-Christenson, MD, FACP & Tyler H. Ternes, MD</i>	
Diffuse Pulmonary Lymphangiomatosis	2-28
<i>Melissa L. Rosado-de-Christenson, MD, FACP & Tyler H. Ternes, MD</i>	
Apical Lung Hernia	2-30
<i>Carol C. Wu, MD</i>	

Pulmonary Circulation

Proximal Interruption of the Pulmonary Artery	2-32
<i>Tyler H. Ternes, MD</i>	
Aberrant Left Pulmonary Artery	2-36
<i>Diane C. Strollo, MD, FACP</i>	
Pulmonary Arteriovenous Malformation	2-38
<i>Tomás Franquet, MD, PhD</i>	
Partial Anomalous Pulmonary Venous Return	2-40
<i>Santiago Martínez-Jiménez, MD</i>	
Scimitar Syndrome	2-44
<i>Santiago Martínez-Jiménez, MD</i>	
Pulmonary Varix	2-48
<i>Diane C. Strollo, MD, FACP</i>	

Systemic Circulation

Accessory Azygos Fissure	2-50
<i>Tomás Franquet, MD, PhD</i>	
Azygos and Hemiazygos Continuation of the IVC	2-52
<i>Jonathan H. Chung, MD</i>	
Persistent Left Superior Vena Cava	2-56
<i>Santiago Martínez-Jiménez, MD</i>	

SECTION 2 Developmental Abnormalities

Introduction and Overview

Approach to Developmental Abnormalities	2-2
<i>Melissa L. Rosado-de-Christenson, MD, FACP</i>	

Aberrant Subclavian Artery	2-62
<i>Jonathan H. Chung, MD</i>	
Right Aortic Arch	2-64
<i>Carol C. Wu, MD</i>	
Double Aortic Arch	2-68
<i>Diane C. Strollo, MD, FACR</i>	
Aortic Coarctation	2-72
<i>Tyler H. Ternes, MD & Santiago Martínez-Jiménez, MD</i>	

Cardiac, Pericardial, and Valvular Defects

Atrial Septal Defect	2-76
<i>Brett W. Carter, MD</i>	
Ventricular Septal Defect	2-80
<i>Brett W. Carter, MD</i>	
Bicuspid Aortic Valve	2-84
<i>Santiago Martínez-Jiménez, MD</i>	
Pulmonic Stenosis	2-88
<i>Brett W. Carter, MD</i>	
Heterotaxy	2-92
<i>Tyler H. Ternes, MD</i>	
Absence of the Pericardium	2-96
<i>Brett W. Carter, MD</i>	

Chest Wall & Diaphragm

Poland Syndrome	2-98
<i>Tomás Franquet, MD, PhD</i>	
Pectus Deformity	2-100
<i>Tomás Franquet, MD, PhD</i>	
Kyphoscoliosis	2-102
<i>Helen T. Winer-Muram, MD</i>	
Morgagni Hernia	2-106
<i>John P. Lichtenberger III, MD</i>	
Bochdalek Hernia	2-108
<i>John P. Lichtenberger III, MD</i>	
Congenital Diaphragmatic Hernia	2-110
<i>Tyler H. Ternes, MD & Melissa L. Rosado-de-Christenson, MD, FACR</i>	

SECTION 3 Airway Diseases

Introduction and Overview

Approach to Airways Disease	3-2
<i>Melissa L. Rosado-de-Christenson, MD, FACR</i>	

Benign Neoplasms

Tracheobronchial Hamartoma	3-6
<i>Jonathan H. Chung, MD</i>	
Tracheobronchial Papillomatosis	3-8
<i>Gerald F. Abbott, MD & Brett W. Carter, MD</i>	

Malignant Neoplasms

Squamous Cell Carcinoma, Airways	3-12
<i>Jonathan H. Chung, MD</i>	
Adenoid Cystic Carcinoma	3-14
<i>Jonathan H. Chung, MD</i>	
Mucoepidermoid Carcinoma	3-16
<i>Jeffrey P. Kanne, MD</i>	
Metastasis, Airways	3-18
<i>Jeffrey P. Kanne, MD</i>	

Airway Narrowing and Wall Thickening

Saber-Sheath Trachea	3-20
<i>Gerald F. Abbott, MD & Brett W. Carter, MD</i>	
Tracheal Stenosis	3-22
<i>John P. Lichtenberger III, MD</i>	
Tracheobronchomalacia	3-24
<i>Jonathan H. Chung, MD</i>	
Middle Lobe Syndrome	3-28
<i>Carol C. Wu, MD</i>	
Airway Wegener Granulomatosis	3-30
<i>Jeffrey P. Kanne, MD</i>	
Tracheobronchial Amyloidosis	3-32
<i>Jeffrey P. Kanne, MD</i>	
Tracheobronchopathia Osteochondroplastica	3-34
<i>Carol C. Wu, MD</i>	
Relapsing Polychondritis	3-36
<i>Jeffrey P. Kanne, MD</i>	
Rhinoscleroma	3-38
<i>Jeffrey P. Kanne, MD</i>	

Bronchial Dilatation and Impaction

Chronic Bronchitis	3-40
<i>Carol C. Wu, MD</i>	
Bronchiectasis	3-42
<i>John P. Lichtenberger III, MD</i>	
Cystic Fibrosis	3-46
<i>Carol C. Wu, MD</i>	
Allergic Bronchopulmonary Aspergillosis	3-50
<i>Terrance T. Healey, MD</i>	
Primary Ciliary Dyskinesia	3-54
<i>Helen T. Winer-Muram, MD</i>	
Williams-Campbell Syndrome	3-58
<i>Jeffrey P. Kanne, MD</i>	
Broncholithiasis	3-60
<i>Carol C. Wu, MD</i>	

Emphysema and Small Airway Diseases

Centrilobular Emphysema	3-62
<i>Terrance T. Healey, MD</i>	
Paraseptal Emphysema	3-66
<i>Terrance T. Healey, MD</i>	
Panlobular Emphysema	3-68
<i>Terrance T. Healey, MD</i>	
Infectious Bronchiolitis	3-70
<i>Gerald F. Abbott, MD & Brett W. Carter, MD</i>	
Constrictive Bronchiolitis	3-74
<i>Gerald F. Abbott, MD & Brett W. Carter, MD</i>	
Swyer-James-McLeod	3-78
<i>Terrance T. Healey, MD</i>	
Asthma	3-80
<i>Santiago Martínez-Jiménez, MD</i>	

SECTION 4 Infections

Introduction and Overview

Approach to Infections	4-2
<i>Santiago Martínez-Jiménez, MD</i>	

General

Bronchopneumonia	4-6
<i>Tomás Franquet, MD, PhD</i>	
Community-acquired Pneumonia	4-8
<i>Jeffrey P. Kanne, MD</i>	
Healthcare-associated Pneumonia	4-12
<i>Tomás Franquet, MD, PhD</i>	
Nosocomial Pneumonia	4-14
<i>Tomás Franquet, MD, PhD</i>	
Lung Abscess	4-16
<i>Helen T. Winer-Muram, MD</i>	
Septic Emboli	4-20
<i>Carol C. Wu, MD</i>	

Bacteria

Pneumococcal Pneumonia	4-24
<i>Terrance T. Healey, MD</i>	
Staphylococcal Pneumonia	4-28
<i>Terrance T. Healey, MD</i>	
Klebsiella Pneumonia	4-32
<i>Carol C. Wu, MD</i>	
Methicillin-resistant <i>Staphylococcus aureus</i> Pneumonia	4-34
<i>Carol C. Wu, MD</i>	
Legionella Pneumonia	4-36
<i>Jeffrey P. Kanne, MD</i>	

Nocardiosis	4-38
<i>Helen T. Winer-Muram, MD</i>	
Actinomycosis	4-40
<i>Tomás Franquet, MD, PhD</i>	
Mycobacteria and Mycoplasma	
Tuberculosis	4-42
<i>Melissa L. Rosado-de-Christenson, MD, FACP</i>	
Nontuberculous Mycobacterial Infection	4-48
<i>Helen T. Winer-Muram, MD</i>	
Mycoplasma Pneumonia	4-52
<i>Carol C. Wu, MD</i>	
Viruses	
Influenza Pneumonia	4-54
<i>Helen T. Winer-Muram, MD</i>	
Cytomegalovirus Pneumonia	4-56
<i>Carol C. Wu, MD</i>	
Severe Acute Respiratory Syndrome	4-60
<i>Tomás Franquet, MD, PhD</i>	

Fungi

Histoplasmosis	4-62
<i>Helen T. Winer-Muram, MD</i>	
Coccidioidomycosis	4-66
<i>Diane C. Strollo, MD, FACP</i>	
Blastomycosis	4-68
<i>Diane C. Strollo, MD, FACP</i>	
Cryptococcosis	4-70
<i>Brett W. Carter, MD</i>	
Aspergillosis	4-72
<i>Terrance T. Healey, MD</i>	
Zygomycosis	4-78
<i>Carol C. Wu, MD</i>	
<i>Pneumocystis jiroveci</i> Pneumonia	4-80
<i>Terrance T. Healey, MD</i>	

Parasites

Dirofilariasis	4-84
<i>Tomás Franquet, MD, PhD</i>	
Hydatidosis	4-86
<i>Tomás Franquet, MD, PhD</i>	
Strongyloidiasis	4-88
<i>Brett W. Carter, MD</i>	

SECTION 5 Pulmonary Neoplasms

Introduction and Overview

Approach to Pulmonary Neoplasms	5-2
<i>Melissa L. Rosado-de-Christenson, MD, FACP</i>	

Solitary Pulmonary Nodule
Melissa L. Rosado-de-Christenson, MD, FACP

5-8 Tumor Emboli
Helen T. Winer-Muram, MD

5-76

Lung Cancer

Adenocarcinoma 5-14

Tyler H. Ternes, MD & Melissa L. Rosado-de-Christenson, MD, FACP

Squamous Cell Carcinoma 5-18

Megan R. Saettele, MD & Melissa L. Rosado-de-Christenson, MD, FACP

Small Cell Carcinoma 5-22

Tyler H. Ternes, MD & Melissa L. Rosado-de-Christenson, MD, FACP

Multifocal Lung Cancer 5-26

Tyler H. Ternes, MD & Melissa L. Rosado-de-Christenson, MD, FACP

Resectable Lung Cancer 5-28

Terrance T. Healey, MD

Unresectable Lung Cancer 5-32

Terrance T. Healey, MD

Uncommon Neoplasms

Pulmonary Hamartoma 5-36

Terrance T. Healey, MD

Bronchial Carcinoid 5-40

Carol C. Wu, MD

Neuroendocrine Carcinoma 5-44

Diane C. Strollo, MD, FACP

Kaposi Sarcoma 5-46

Santiago Martínez-Jiménez, MD

Lymphoma and Lymphoproliferative Disorders

Follicular Bronchiolitis 5-50

John P. Lichtenberger III, MD

Lymphocytic Interstitial Pneumonia 5-52

Jeffrey P. Kanne, MD

Nodular Lymphoid Hyperplasia 5-56

Santiago Martínez-Jiménez, MD

Post-Transplant Lymphoproliferative Disease (PTLD) 5-58

Jeffrey P. Kanne, MD

Pulmonary Non-Hodgkin Lymphoma 5-62

Carol C. Wu, MD

Pulmonary Hodgkin Lymphoma 5-66

Jonathan H. Chung, MD

Metastatic Disease

Hematogenous Metastases 5-68

John P. Lichtenberger III, MD

Lymphangitic Carcinomatosis 5-72

Terrance T. Healey, MD

SECTION 6 Interstitial, Diffuse, and Inhalational Lung Disease

Introduction and Overview

Approach to Interstitial, Diffuse, and Inhalational Lung Disease 6-2

Gerald F. Abbott, MD

Idiopathic Interstitial Lung Diseases

Acute Respiratory Distress Syndrome (ARDS) 6-6

Brett W. Carter, MD

Acute Interstitial Pneumonia 6-8

Jeffrey P. Kanne, MD

Idiopathic Pulmonary Fibrosis 6-10

Jeffrey P. Kanne, MD

Nonspecific Interstitial Pneumonia 6-14

Tyler H. Ternes, MD

Cryptogenic Organizing Pneumonia 6-18

Jonathan H. Chung, MD

Sarcoidosis 6-22

Melissa L. Rosado-de-Christenson, MD, FACP

Smoking-related Diseases

Respiratory Bronchiolitis and RBILD 6-28

Jeffrey P. Kanne, MD

Desquamative Interstitial Pneumonia 6-32

Tyler H. Ternes, MD

Pulmonary Langerhans Cell Histiocytosis 6-34

Tyler H. Ternes, MD

Pulmonary Fibrosis Associated with Smoking 6-38

John P. Lichtenberger III, MD

Pneumoconiosis

Asbestosis 6-40

Jonathan H. Chung, MD

Silicosis and Coal Worker's Pneumoconiosis 6-44

Jonathan H. Chung, MD

Hard Metal Pneumoconiosis 6-48

Jonathan H. Chung, MD

Berylliosis 6-50

Jonathan H. Chung, MD

Silo-Filler's Disease 6-52

Tyler H. Ternes, MD

Other Inhalational Disorders

Hypersensitivity Pneumonitis 6-54

Jonathan H. Chung, MD

Smoke Inhalation <i>Terrance T. Healey, MD</i>	6-58	Systemic Lupus Erythematosus <i>Jeffrey P. Kanne, MD</i>	7-16
Aspiration <i>Tomás Franquet, MD, PhD</i>	6-62	Sjögren Syndrome <i>Jeffrey P. Kanne, MD</i>	7-20
Talcosis <i>Jeffrey P. Kanne, MD</i>	6-64	Ankylosing Spondylitis <i>Jonathan H. Chung, MD</i>	7-24
Eosinophilic Lung Disease		Inflammatory Bowel Disease <i>Jeffrey P. Kanne, MD</i>	7-26
Acute Eosinophilic Pneumonia <i>Jeffrey P. Kanne, MD</i>	6-66	Erdheim-Chester Disease <i>Jonathan H. Chung, MD</i>	7-28
Chronic Eosinophilic Pneumonia <i>Jeffrey P. Kanne, MD</i>	6-70		
Hypereosinophilic Syndrome <i>Jeffrey P. Kanne, MD</i>	6-74	Thoracic Complications in Immunocompromised Patients	
Metabolic Diseases and Miscellaneous Conditions		Hematopoietic Stem Cell Transplantation <i>Carol C. Wu, MD</i>	7-30
Alveolar Microlithiasis <i>Jonathan H. Chung, MD</i>	6-76	Solid Organ Transplantation <i>Carol C. Wu, MD</i>	7-34
Metastatic Pulmonary Calcification <i>Jonathan H. Chung, MD</i>	6-78	HIV/AIDS <i>Carol C. Wu, MD</i>	7-38
Lymphangioleiomyomatosis <i>Gerald F. Abbott, MD & Brett W. Carter, MD</i>	6-80	Neutropenia <i>Carol C. Wu, MD</i>	7-42
Pulmonary Amyloidosis <i>Tomás Franquet, MD, PhD</i>	6-84	Pulmonary Hemorrhage and Vasculitis	
Pulmonary Alveolar Proteinosis <i>Santiago Martínez-Jiménez, MD</i>	6-86	Idiopathic Pulmonary Hemorrhage <i>Terrance T. Healey, MD</i>	7-46
Lipoid Pneumonia <i>Tomás Franquet, MD, PhD</i>	6-90	Goodpasture Syndrome <i>John P. Lichtenberger III, MD</i>	7-48
		Pulmonary Wegener Granulomatosis <i>Brett W. Carter, MD</i>	7-52
		Churg-Strauss Syndrome <i>Jonathan H. Chung, MD</i>	7-56
		Behçet Syndrome <i>John P. Lichtenberger III, MD</i>	7-58
		Necrotizing Sarcoid Granulomatosis <i>John P. Lichtenberger III, MD</i>	7-60

SECTION 7 Connective Tissue Disorders, Immunological Diseases, and Vasculitis

Introduction and Overview

Approach to Connective Tissue Disorders, Immunological Diseases, and Vasculitis <i>Gerald F. Abbott, MD</i>	7-2
---	-----

Immunological and Connective Tissue Disorders

Rheumatoid Arthritis <i>Jonathan H. Chung, MD</i>	7-4
Scleroderma <i>Jonathan H. Chung, MD</i>	7-8
Mixed Connective Tissue Disease <i>Jonathan H. Chung, MD</i>	7-12
Polymyositis/Dermatomyositis <i>Brett W. Carter, MD</i>	7-14

SECTION 8 Mediastinal Abnormalities

Introduction and Overview

Approach to Mediastinal Abnormalities <i>Melissa L. Rosado-de-Christenson, MD, FACR</i>	8-2
--	-----

Primary Neoplasms

Thymoma <i>Melissa L. Rosado-de-Christenson, MD, FACR</i>	8-8
Thymic Malignancy <i>John P. Lichtenberger III, MD</i>	8-12
Thymolipoma <i>John P. Lichtenberger III, MD</i>	8-14

Mediastinal Teratoma <i>John P. Lichtenberger III, MD</i>	8-16	Mediastinal Hemangioma <i>John P. Lichtenberger III, MD</i>	8-80
Mediastinal Seminoma <i>Terrance T. Healey, MD</i>	8-20	Glandular Enlargement	
Nonseminomatous Malignant Germ Cell Neoplasm <i>Terrance T. Healey, MD</i>	8-22	Thymic Hyperplasia <i>Santiago Martínez-Jiménez, MD</i>	8-82
Neurogenic Neoplasms of the Nerve Sheath <i>Terrance T. Healey, MD</i>	8-24	Goiter <i>Santiago Martínez-Jiménez, MD</i>	8-86
Neurogenic Neoplasms of the Sympathetic Ganglia <i>John P. Lichtenberger III, MD</i>	8-28	Diseases of the Esophagus	
Neurofibromatosis <i>Brett W. Carter, MD</i>	8-30	Achalasia <i>Tomás Franquet, MD, PhD</i>	8-90
Lymphadenopathy		Esophageal Diverticulum <i>Tomás Franquet, MD, PhD</i>	8-92
Metastatic Disease, Lymphadenopathy <i>Brett W. Carter, MD</i>	8-34	Esophageal Stricture <i>Santiago Martínez-Jiménez, MD</i>	8-94
Mediastinal Hodgkin Lymphoma <i>Santiago Martínez-Jiménez, MD</i>	8-38	Esophageal Carcinoma <i>Carol C. Wu, MD</i>	8-96
Mediastinal Non-Hodgkin Lymphoma <i>Santiago Martínez-Jiménez, MD</i>	8-42	Miscellaneous Conditions	
Sarcoidosis, Lymphadenopathy <i>Brett W. Carter, MD</i>	8-46	Mediastinal Lipomatosis <i>Carol C. Wu, MD</i>	8-100
Mediastinal Fibrosis <i>Brett W. Carter, MD</i>	8-50	Mediastinitis <i>Carol C. Wu, MD</i>	8-102
Localized Castleman Disease <i>Brett W. Carter, MD</i>	8-54	Extramedullary Hematopoiesis <i>Santiago Martínez-Jiménez, MD</i>	8-106
Multicentric Castleman Disease <i>John P. Lichtenberger III, MD</i>	8-56	Hiatal and Paraesophageal Hernia <i>Melissa L. Rosado-de-Christenson, MD, FACR</i>	8-108
Cysts		SECTION 9	
Bronchogenic Cyst <i>Helen T. Winer-Muram, MD</i>	8-58	Cardiovascular Disorders	
Esophageal Duplication Cyst <i>Diane C. Strollo, MD, FACR</i>	8-62	Introduction and Overview	
Pericardial Cyst <i>Helen T. Winer-Muram, MD</i>	8-64	Approach to Cardiovascular Disorders <i>Santiago Martínez-Jiménez, MD</i>	9-2
Thymic Cyst <i>Melissa L. Rosado-de-Christenson, MD, FACR</i>	8-68	Diseases of the Aorta and Great Vessels	
Vascular Lesions		Atherosclerosis <i>Santiago Martínez-Jiménez, MD</i>	9-6
Mediastinal Vascular Masses <i>Brett W. Carter, MD</i>	8-70	Aortic Aneurysm <i>Santiago Martínez-Jiménez, MD</i>	9-10
Coronary Artery Aneurysm <i>John P. Lichtenberger III, MD</i>	8-74	Acute Aortic Syndromes <i>Santiago Martínez-Jiménez, MD</i>	9-12
Paraesophageal Varices <i>John P. Lichtenberger III, MD</i>	8-76	Marfan Syndrome <i>Santiago Martínez-Jiménez, MD</i>	9-16
Mediastinal Lymphangioma <i>John P. Lichtenberger III, MD</i>	8-78	Takayasu Arteritis <i>Brett W. Carter, MD</i>	9-18
		Superior Vena Cava Obstruction <i>Gerald F. Abbott, MD & Brett W. Carter, MD</i>	9-20

Pulmonary Edema

Cardiogenic Pulmonary Edema	9-24
<i>Melissa L. Rosado-de-Christenson, MD, FACR</i>	
Noncardiogenic Pulmonary Edema	9-30
<i>Gerald F. Abbott, MD & Brett W. Carter, MD</i>	

Pulmonary Hypertension and Thromboembolic Disease

Pulmonary Artery Hypertension	9-32
<i>Gerald F. Abbott, MD & Brett W. Carter, MD</i>	
Pulmonary Capillary Hemangiomatosis	9-36
<i>Terrance T. Healey, MD</i>	
Pulmonary Venooclusive Disease	9-38
<i>Jeffrey P. Kanne, MD</i>	
Acute Pulmonary Thromboembolic Disease	9-40
<i>Helen T. Winer-Muram, MD</i>	
Chronic Pulmonary Thromboembolic Disease	9-44
<i>Helen T. Winer-Muram, MD</i>	
Sickle Cell Disease	9-48
<i>Helen T. Winer-Muram, MD</i>	
Fat Embolism	9-52
<i>Gerald F. Abbott, MD & Brett W. Carter, MD</i>	
Hepatopulmonary Syndrome	9-54
<i>John P. Lichtenberger III, MD</i>	
Illicit Drug Use, Pulmonary Manifestations	9-56
<i>Carol C. Wu, MD</i>	

Diseases of the Heart and Pericardium

Valve and Annular Calcification	9-58
<i>Gerald F. Abbott, MD & Brett W. Carter, MD</i>	
Aortic Valve Disease	9-62
<i>Gerald F. Abbott, MD & Brett W. Carter, MD</i>	
Mitral Valve Disease	9-66
<i>John P. Lichtenberger III, MD</i>	
Left Atrial Calcification	9-70
<i>Gerald F. Abbott, MD & Brett W. Carter, MD</i>	
Ventricular Calcification	9-72
<i>Gerald F. Abbott, MD & Brett W. Carter, MD</i>	
Coronary Artery Calcification	9-74
<i>Gerald F. Abbott, MD & Brett W. Carter, MD</i>	
Post Cardiac Injury Syndrome	9-78
<i>Tomás Franquet, MD, PhD</i>	
Pericardial Effusion	9-80
<i>Melissa L. Rosado-de-Christenson, MD, FACR</i>	
Constrictive Pericarditis	9-86
<i>John P. Lichtenberger III, MD</i>	

Cardiovascular Neoplasms

Cardiac and Pericardial Metastases	9-88
<i>John P. Lichtenberger III, MD</i>	

Cardiac Myxoma	9-92
<i>John P. Lichtenberger III, MD</i>	
Cardiac Sarcoma	9-94
<i>Brett W. Carter, MD</i>	
Pulmonary Artery Sarcoma	9-96
<i>Brett W. Carter, MD</i>	
Aortic Sarcoma	9-98
<i>Carol C. Wu, MD</i>	

SECTION 10 Trauma

Introduction and Overview

Approach to Chest Trauma	10-2
<i>Melissa L. Rosado-de-Christenson, MD, FACR</i>	

Airways and Lung

Tracheobronchial Laceration	10-6
<i>Terrance T. Healey, MD</i>	
Pulmonary Contusion/Laceration	10-8
<i>Terrance T. Healey, MD</i>	

Cardiovascular/Mediastinum

Pneumomediastinum	10-12
<i>John P. Lichtenberger III, MD</i>	
Traumatic Aortic Injury	10-16
<i>Terrance T. Healey, MD</i>	
Esophageal Rupture	10-20
<i>Tomás Franquet, MD, PhD & Diane C. Strollo, MD, FACR</i>	
Thoracic Duct Tear	10-24
<i>Carol C. Wu, MD</i>	

Pleura, Chest Wall, and Diaphragm

Traumatic Pneumothorax	10-26
<i>Terrance T. Healey, MD</i>	
Traumatic Hemothorax	10-28
<i>Terrance T. Healey, MD</i>	
Thoracic Splenosis	10-30
<i>Jonathan H. Chung, MD</i>	
Rib Fractures and Flail Chest	10-32
<i>Jonathan H. Chung, MD</i>	
Spinal Fracture	10-38
<i>Jonathan H. Chung, MD</i>	
Sternal Fracture	10-40
<i>Tomás Franquet, MD, PhD</i>	
Diaphragmatic Rupture	10-42
<i>Jonathan H. Chung, MD</i>	

SECTION 11 Post-Treatment Chest

Introduction and Overview

Approach to Post-Treatment Chest	11-2
<i>Santiago Martínez-Jiménez, MD</i>	

Life Support Devices

Appropriately Positioned Tubes and Catheters	11-6
<i>Helen T. Winer-Muram, MD</i>	
Abnormally Positioned Tubes and Catheters	11-10
<i>Helen T. Winer-Muram, MD</i>	
Pacemaker/AICD	11-14
<i>Terrance T. Healey, MD</i>	

Surgical Procedures and Complications

Pleurodesis	11-18
<i>Tomás Franquet, MD, PhD</i>	
Sublobar Resection	11-20
<i>Jonathan H. Chung, MD</i>	
Lung Volume Reduction Surgery	11-22
<i>Carol C. Wu, MD</i>	
Lobectomy	11-24
<i>Brett W. Carter, MD</i>	
Lobar Torsion	11-28
<i>Jeffrey P. Kanne, MD</i>	
Pneumonectomy	11-30
<i>Melissa L. Rosado-de-Christenson, MD, FACP</i>	
Extrapleural Pneumonectomy	11-34
<i>Carol C. Wu, MD</i>	
Thoracoplasty and Apicolysis	11-36
<i>Jeffrey P. Kanne, MD</i>	
Lung Herniation	11-38
<i>Jeffrey P. Kanne, MD</i>	
Sternotomy	11-40
<i>Diane C. Strollo, MD, FACP</i>	
Cardiac Transplantation	11-44
<i>John P. Lichtenberger III, MD</i>	
Lung Transplantation	11-48
<i>Jeffrey P. Kanne, MD</i>	
Post-Transplantation Airway Stenosis	11-52
<i>Carol C. Wu, MD</i>	
Esophageal Resection	11-54
<i>Tomás Franquet, MD, PhD</i>	

Radiation, Chemotherapy, Ablation

Radiation-Induced Lung Disease	11-56
<i>Helen T. Winer-Muram, MD</i>	

Drug-Induced Lung Disease	11-60
<i>Helen T. Winer-Muram, MD</i>	
Amiodarone Toxicity	11-64
<i>Jeffrey P. Kanne, MD</i>	
Ablation Procedures	11-66
<i>Terrance T. Healey, MD</i>	

SECTION 12 Pleural Diseases

Introduction and Overview

Approach to Pleural Diseases	12-2
<i>Gerald F. Abbott, MD</i>	

Effusion

Transudative Pleural Effusion	12-6
<i>Helen T. Winer-Muram, MD</i>	
Exudative Pleural Effusion	12-10
<i>Helen T. Winer-Muram, MD</i>	
Hemothorax	12-14
<i>Diane C. Strollo, MD, FACP</i>	
Chylothorax	12-16
<i>Diane C. Strollo, MD, FACP</i>	
Empyema	12-18
<i>Jonathan H. Chung, MD</i>	
Bronchopleural Fistula	12-22
<i>Jonathan H. Chung, MD</i>	

Pneumothorax

Iatrogenic Pneumothorax	12-24
<i>Carol C. Wu, MD</i>	
Primary Spontaneous Pneumothorax	12-26
<i>Terrance T. Healey, MD</i>	
Secondary Spontaneous Pneumothorax	12-30
<i>Jonathan H. Chung, MD</i>	

Pleural Thickening

Apical Cap	12-34
<i>John P. Lichtenberger III, MD</i>	
Pleural Plaques	12-36
<i>Terrance T. Healey, MD</i>	
Pleural Fibrosis and Fibrothorax	12-40
<i>Terrance T. Healey, MD</i>	

Neoplasia

Malignant Pleural Effusion	12-42
<i>Gerald F. Abbott, MD</i>	
Solid Pleural Metastases	12-46
<i>Gerald F. Abbott, MD & Brett W. Carter, MD</i>	
Malignant Pleural Mesothelioma	12-50
<i>Gerald F. Abbott, MD & Brett W. Carter, MD</i>	