

# MOUNTBATTEN

---

## *The Official Biography*

PHILIP ZIEGLER

COLLINS  
8 Grafton Street London W1  
1985



Queen Victoria with Dickie at his christening at Frogmore House, Windsor.



Dickie's father and mother,  
Prince Louis and Princess Victoria  
of Battenberg, photographed  
in 1906.

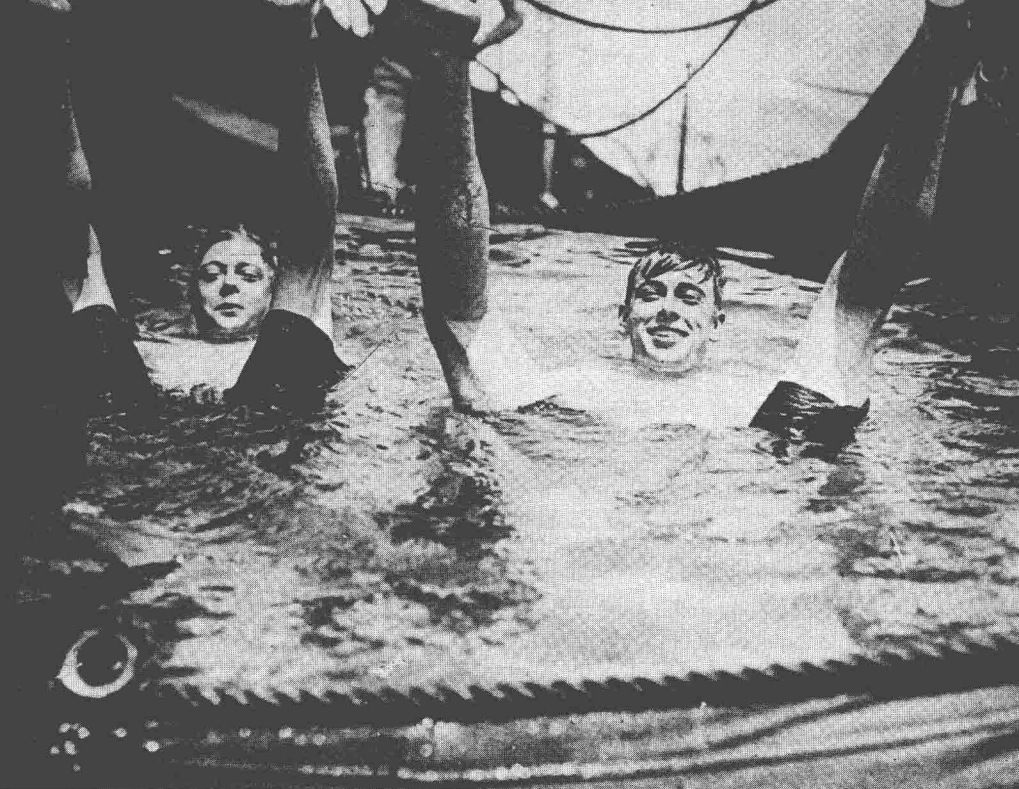




Dickie in his first sailor suit, with his favourite teddy-bear, Sonnenbeim, on the balcony of his parents' London home, 70 Cadogan Square.



The four Battenberg children in 1910;  
from left to right, Alice, Louise, Georgie, and Dickie.



Mountbatten with his cousin the Prince of Wales in the canvas bath on board H.M.S. *Renown* during the First Royal Tour, 1920.

The Prince of Wales and his staff in Japanese dress.  
 From left to right, standing: Mountbatten, Hon. B. Ogilvy, Sir G. Thomas, Captain 'Fruity' Metcalfe; seated: Captain North, Admiral Halsey, the Prince, Surgeon-Commander Newport and Hon. P. Legh.





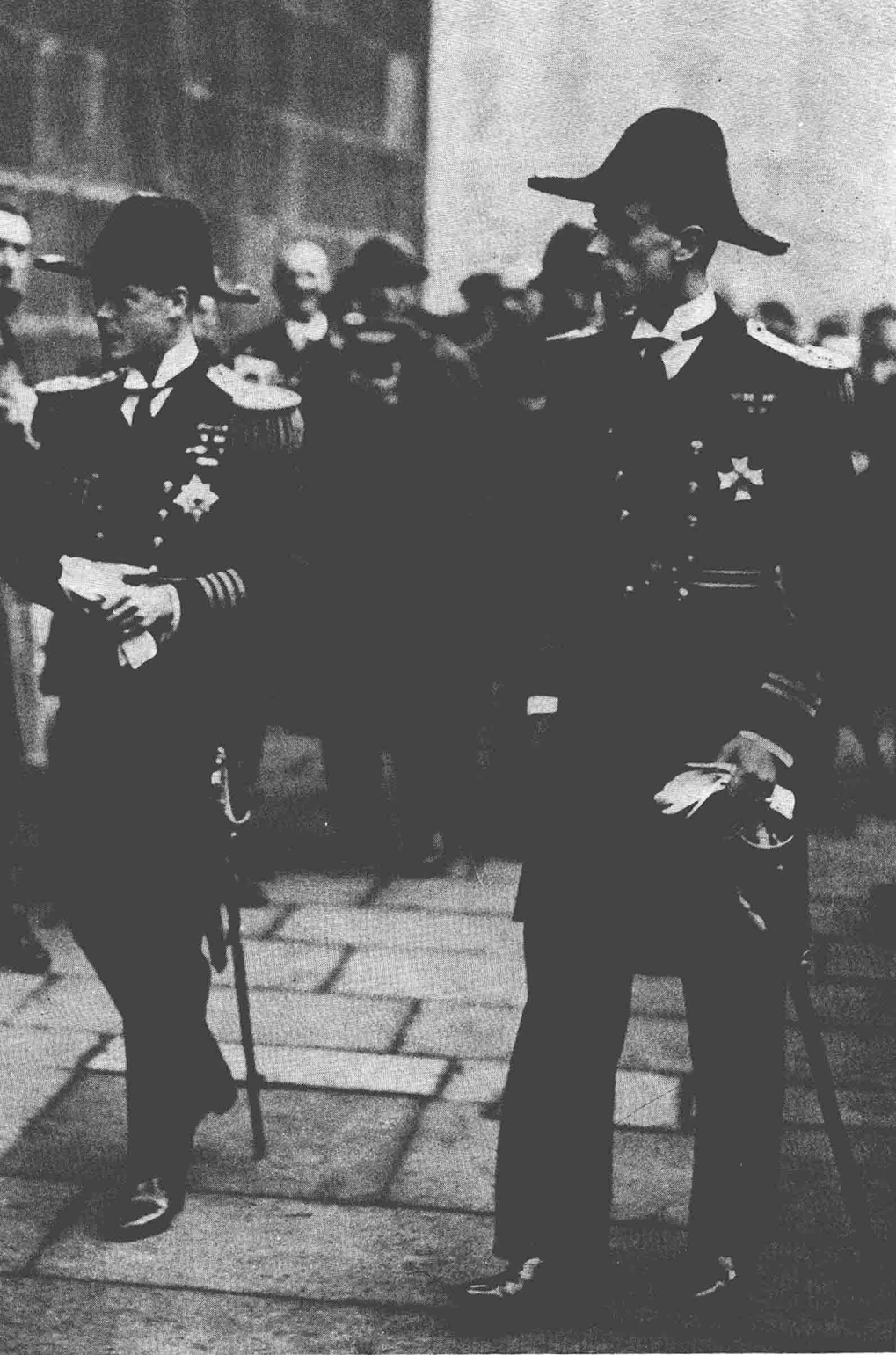
Mountbatten carrying on his shoulders the Duke of York, future King George VI, during their time at Cambridge.





Edwina Ashley in 1919.





Mountbatten with his best man, the Prince of Wales, arrives for his wedding.



The honeymoon couple visit Cecil B. De Mille's studio in Hollywood.  
Charlie Chaplin is between De Mille and Edwina.

Adsdean: a large, mainly Victorian house near Portsmouth.





The Shrimps polo team; from left to right, Mountbatten, Charles Lambe, Teddy Heywood-Lonsdale, Tufty Courage.

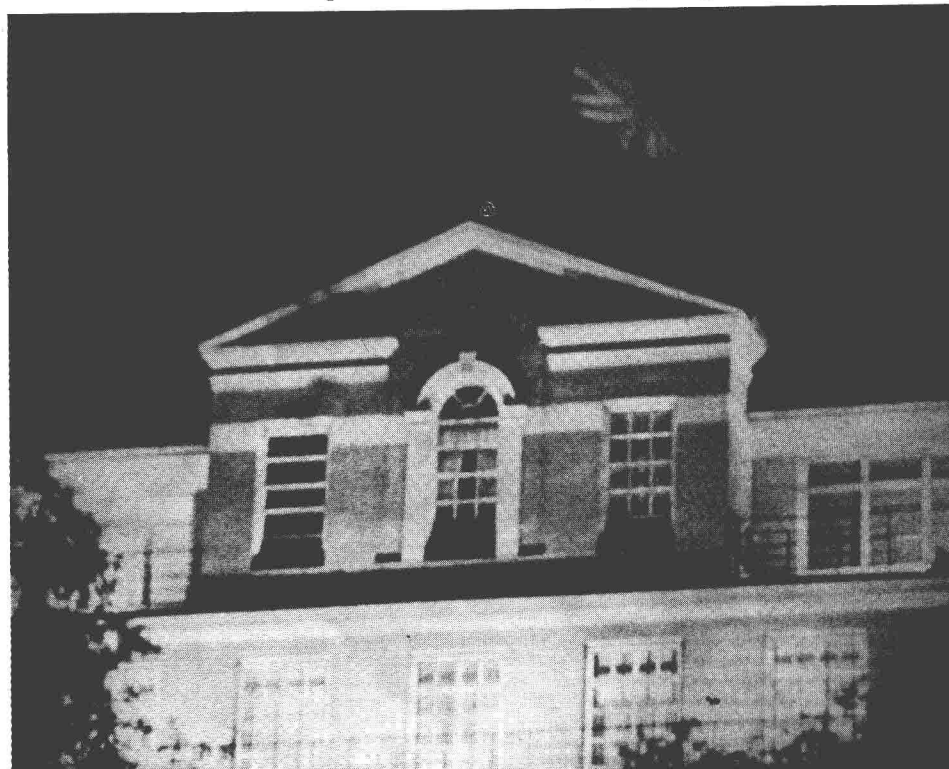
Polo at Valletta. Mountbatten on Maltese Cat, one of his favourite ponies.





Yola Letellier, Patricia and Edwina.

The penthouse at Brook House, lit up at night.



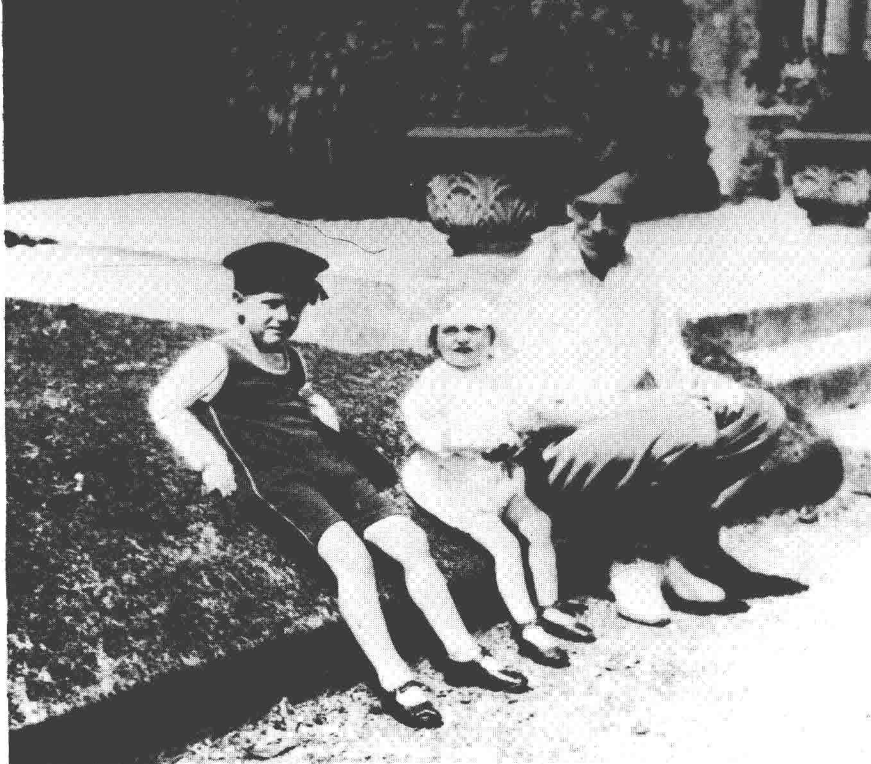


Peter Murphy.

The Mountbattens on a roof-top in Malta.







Mountbatten at Adsdean with Prince Philip and Patricia,  
and with Princess Elizabeth for the Coronation Review.





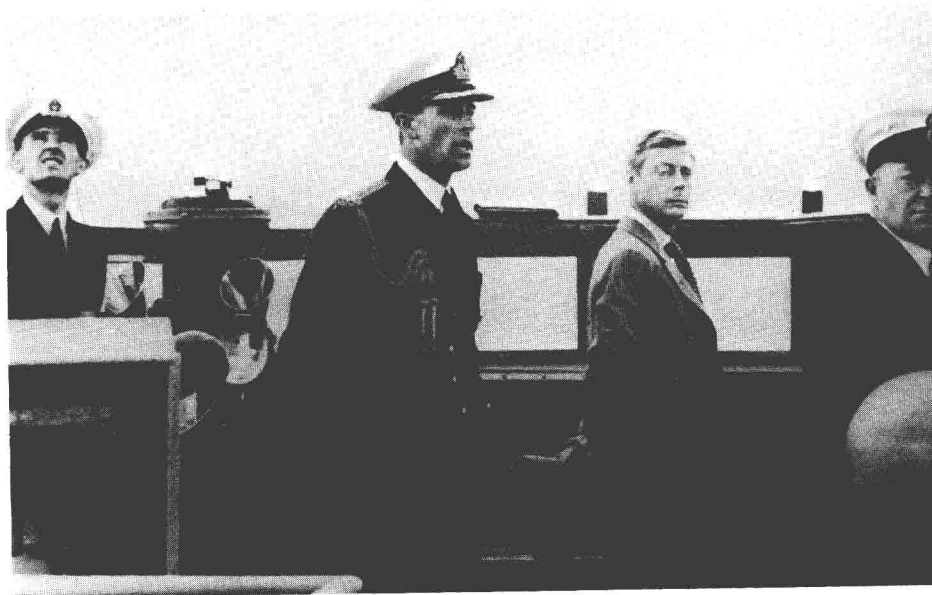


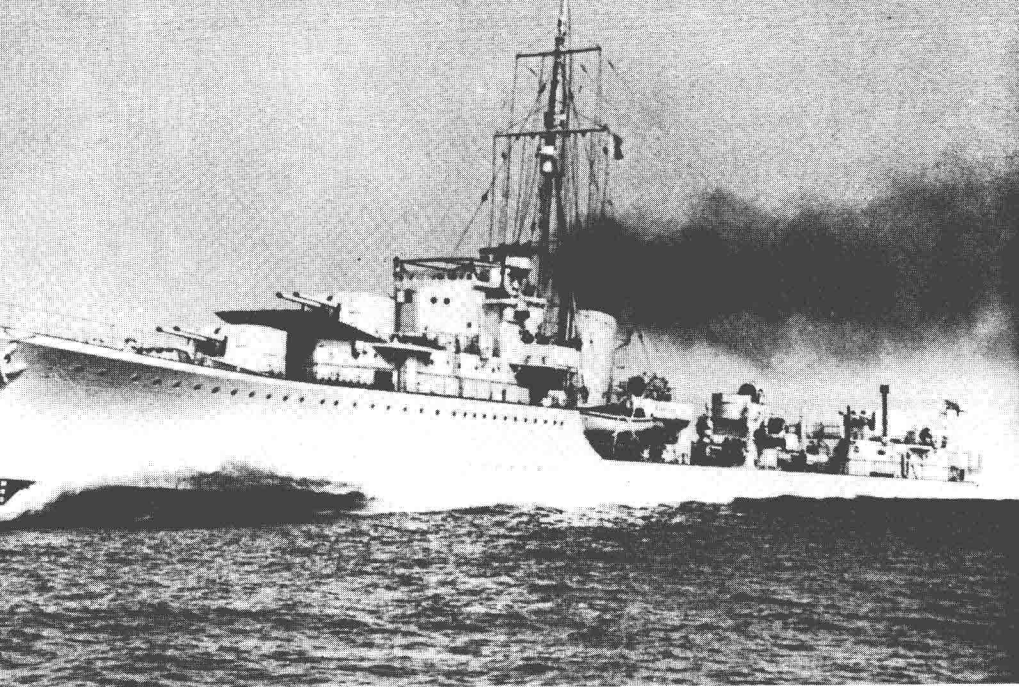
The Prince of Wales and Mrs Simpson aboard H.M.S. *Wishart* at Cannes in 1935.  
To the left are Mrs Fitzgerald and Lord Sefton; to the right, Mrs Buist.



The Mountbattens with their two daughters, Patricia and Pamela, in 1938.

The Duke of Windsor aboard H.M.S. *Kelly* on his return to England  
at the outbreak of war.





H.M.S. *Kelly* carrying out her first full-power trials in August 1939, and in dry-dock with a hole ripped in her side by a German torpedo.

