

# Heart Disease in Infants, Children and Adolescents

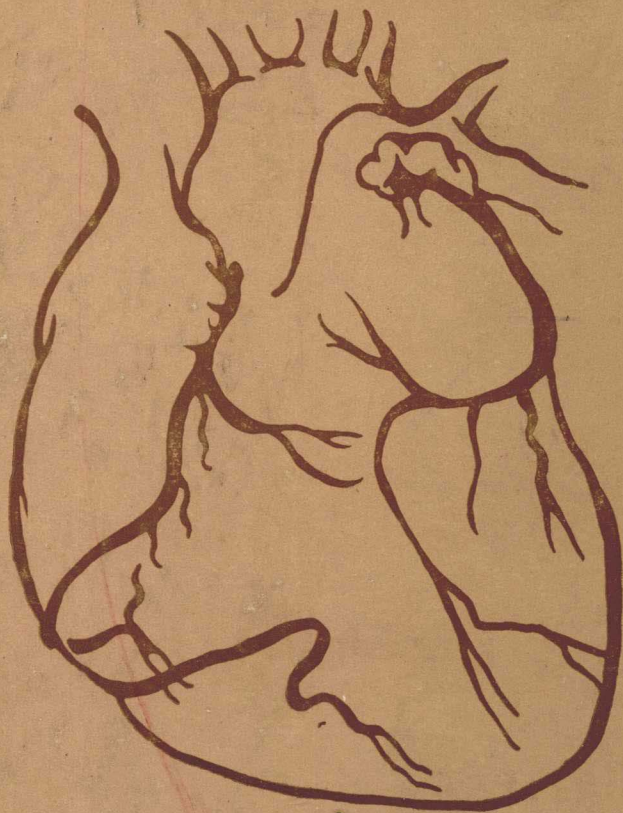
Edited by:

Arthur J. Moss, M.D.

Forrest H. Adams, M.D.

George C. Emmanouilides, M.D.

SECOND EDITION



Copyright ©, 1977  
The Williams & Wilkins Company  
428 E. Preston Street  
Baltimore, Md. 21202, U.S.A.

All rights reserved. This book is protected by copyright. No part of this book may be reproduced in any form or by any means, including photocopying, or utilized by any information storage and retrieval system without written permission from the copyright owner.

*Made in the United States of America*

Library of Congress Cataloging in Publication Data

Moss, Arthur J

Heart disease in infants, children, and adolescents.

Includes bibliographies and index.

1. Pediatric cardiology. I. Adams, Forrest H., joint author. II. Emmanouilides, George C., joint author. III. Title. [DNLM: 1. Heart diseases—In adolescence. 2. Heart diseases—In infancy and childhood. WS290 H436]

RJ421.M6 1977 618.9'21'2 76-54358

ISBN 0-683-06079-1

Reprinted May, 1978

Reprinted November, 1978

Composed and printed at the  
Waverly Press, Inc.  
Mt. Royal and Guilford Aves.  
Baltimore, Md. 21202, U.S.A.

# ***Heart Disease in Infants, Children, and Adolescents***

***Second Edition***



**second edition**

# **HEART DISEASE**



*The Williams & Wilkins Co./Baltimore*



# **in Infants, Children, and Adolescents**

**EDITED BY**

**ARTHUR J. MOSS, M.D.**

Professor and Chairman  
Department of Pediatrics  
UCLA School of Medicine  
Los Angeles, California

**FORREST H. ADAMS, M.D.**

Professor of Pediatrics  
Head, Division of Cardiology  
Department of Pediatrics  
UCLA School of Medicine  
Los Angeles, California

**GEORGE C. EMMANOULIDES,  
M.D.**

Professor of Pediatrics  
UCLA School of Medicine  
Chief, Division of Pediatric Cardiology  
Harbor General Hospital Campus  
Torrance, California

**with 79 contributors**

**... IN AN ABUNDANCE OF COUNSELORS THERE IS SAFETY**

*Proverbs, 11:14*

# PREFACE

---

As with the previous edition, the present effort evolved from the belief that cardiology, as it applies to infants, children, and adolescents, has become so complex and extensive that communication with the student is best served by many teachers rather than by a single one. Thus, the contents of this volume represent the work of 79 contributors from 33 cardiac centers in the United States and abroad. Again, the term student is meant to include the undergraduate, the general practitioner, the pediatrician, the internist, and the cardiologist.

This second edition is somewhat shorter than the first, a difficult accomplishment achieved only by the most careful "pruning" and with meticulous attention given to preservation of subjects and details believed to be of current interest and value. Although some chapters have been deleted, others such as echocardiography, heart disease in the newborn, heart disease in the adolescent, rheumatic fever in underdeveloped countries, diseases of the mitral valve, congenital absence of the pulmonary valve, origin of both great arteries from the left ventricle, and atherosclerosis are completely new. Also, there are a number of new contributors who, in accordance with previous policy, were selected because of their special knowledge and interest in their respective subjects. The reader will readily recognize that much of the material is based on original observations made by the contributors themselves.

The general pattern of the text is essentially unchanged, including sections devoted to certain areas of general cardiology, congenital defects, infectious diseases, metabolic and degenerative diseases, and special problems. The authors were encouraged to include physiologic mechanisms and alterations as space would permit. Every attempt was made to produce a text which would be as comprehensive and detailed as possible within the confines of a single volume of practical length.

Again, all of the chapters were edited to some extent, and, once more, we ask the contributors' tolerance for this intrusion of their literary lives. However, it should be pointed out that special care was taken to preserve as much of the original styles as possible in order to reflect the individual personalities of the authors.

Certain acknowledgments are in order. We are most grateful to the other authors who so willingly accepted this added responsibility despite their heavily burdened schedule of educa-

**PREFACE**

tional and investigative activities. Deep appreciation is also given to the secretaries of the contributors, including those of our own staff, for their enthusiastic participation. Finally, special credit is again due the publishers, Williams & Wilkins, who spared neither time nor expense to help us make this book what it is.

**ARTHUR J. MOSS, M.D.**

**FORREST H. ADAMS, M.D.**

**GEORGE C. EMMANOULIDES, M.D.**



# CONTRIBUTORS

---

**Forrest H. Adams, M.D.**

Professor of Pediatrics  
Head, Division of Cardiology  
Department of Pediatrics  
UCLA School of Medicine  
Los Angeles, California  
(Chapter 2)

**Ray C. Anderson, M.D., Ph.D.**

Professor of Pediatrics  
University of Minnesota  
Minneapolis, Minnesota  
(Chapter 38)

**Iraj Aryanpur, M.D., F.A.C.C.**

Director of Division II  
Pediatric Cardiology  
Queen Pahlavi Cardiovascular Center  
Heart Hospital  
Tehran, Iran  
(Chapter 34)

**Harvey W. Bender, M.D.**

Professor of Surgery  
Director of the Division of Cardiac and Thoracic  
Surgery  
Vanderbilt University Medical Center  
Nashville, Tennessee  
(Chapter 8)

**Sidney Blumenthal, M.D.**

Director  
Division of Heart and Vascular Diseases  
National Heart and Lung Institute  
Bethesda, Maryland  
(Chapter 35)

**Peter R. Bream, M.D.**

Fellow in Cardiac Radiology  
College of Medicine  
University of Florida  
Gainesville, Florida  
(Chapter 23)

**Joan L. Caddell, M.D.**

Associate Clinical Professor of Pediatrics  
St. Louis University School of Medicine  
St. Louis, Missouri  
formerly: Fellow of the Rockefeller Foundation in  
Uganda and Nigeria, and Research Investigator,  
the National Institutes of Health in Chiangmai,  
Thailand  
(Chapter 37)

**Guy A. Carter, M.D.**

Assistant Professor of Pediatrics  
University of Iowa  
Iowa City, Iowa  
(Chapter 46)

**Jesse E. Edwards, M.D.**

Director of Laboratories  
United Hospitals-Miller Division  
St. Paul, Minnesota  
Professor of Pathology  
University of Minnesota  
Minneapolis, Minnesota  
(Chapter 44)

**Larry P. Elliott, M.D.**

Professor of Radiology (Cardiac)  
College of Medicine  
University of Florida  
Gainesville, Florida  
(Chapter 23)

**George C. Emmanouilides, M.D.**

Professor of Pediatrics  
UCLA School of Medicine  
Chief, Division of Pediatric Cardiology  
Harbor General Hospital Campus  
Torrance, California  
(Chapters 14 and 15)

**Mary Allen Engle, M.D.**

Professor of Pediatrics  
Director of Pediatric Cardiology  
The New York Hospital-Cornell Medical Center  
New York, New York  
(Chapter 45)

**Robert H. Feldt, M.D.**

Associate Professor of Pediatrics  
Mayo Medical School  
Consultant, Pediatric Cardiology  
Mayo Clinic  
Rochester, Minnesota  
(Chapter 7)

**Elizabeth A. Fisher, M.D.**

Associate Professor of Pediatrics  
University of Illinois College of Medicine  
Senior Cardiologist  
Section of Pediatric Cardiology  
University of Illinois Medical Center  
Chicago, Illinois  
(Chapter 30)

**William F. Friedman, M.D.**

Professor of Pediatrics  
Chief, Division of Pediatric Cardiology  
University of California-San Diego  
School of Medicine  
La Jolla, California  
(Chapter 11)

**Henry Gelband, M.D.**

Associate Professor of Pediatrics (Cardiology)  
and Pharmacology  
Director, Clinical Pediatric Cardiology  
University of Miami School of Medicine  
Miami, Florida  
(Chapter 43)

**Ira H. Gessner, M.D.**

Professor and Head  
Division of Pediatric Cardiology  
College of Medicine  
University of Florida  
Gainesville, Florida  
(Chapter 23)

**David Goldring, M.D.**

Professor of Pediatrics  
Washington University Medical School  
Director of Pediatric Cardiology  
St. Louis Children's Hospital  
St. Louis, Missouri  
(Chapter 12)

**Thomas P. Graham, Jr., M.D.**

Professor of Pediatrics and  
Director of the Division of Pediatric Cardiology  
Vanderbilt University Medical Center  
Nashville, Tennessee  
(Chapter 8)

**F. Acerete Guillén, M.D.**

Associate Pediatric Cardiologist  
Servicio Cardiología Pediátrica  
Clínica Infantil "La Paz"  
Madrid, Spain  
(Chapter 28)

**Warren G. Guntheroth, M.D.**

Professor of Pediatrics  
Head, Division of Pediatric Cardiology  
University of Washington School of Medicine  
Seattle, Washington  
(Chapter 17)

**M. C. Castro Gussoni, M.D.**

Associate Pediatric Cardiologist  
Servicio Cardiología Pediátrica  
Clínica Infantil "La Paz"  
Madrid, Spain  
(Chapter 28)

**Lulu M. Haroutunian, M.D.**

Assistant Professor of Pediatrics and Medicine  
Johns Hopkins University and Hospital  
Baltimore, Maryland  
(Chapter 47)

**Alexis F. Hartmann, Jr., M.D.**

Professor of Pediatrics  
Washington University Medical School  
St. Louis, Missouri  
(Chapter 12)

**Alois R. Hastreiter, M.D.**

Professor of Pediatrics  
University of Illinois College of Medicine  
Director, Section of Pediatric Cardiology  
University of Illinois Medical Center  
Chicago, Illinois  
(Chapter 30)

**Antonio Hernandez, M.D.**

Assistant Professor of Pediatrics  
Washington University Medical School  
St. Louis, Missouri  
(Chapter 12)

**Michael A. Heymann, M.D.**

Associate Professor of Pediatrics and Obstetrics  
and Gynecology  
Associate Staff Member, Cardiovascular Research  
Institute University of California—San Francisco  
San Francisco, California  
(Chapter 10)

**Jay M. Jarmakani, M.D.**

Associate Professor of Pediatrics (Cardiology)  
UCLA School of Medicine  
Director, Cardiopulmonary Laboratory  
Los Angeles, California  
(Chapter 6)

**M. Quero Jiménez, M.D.**

Chief of the Service of Pediatric Cardiology  
Associate Professor of Pediatrics  
Clínica Infantil "La Paz"  
Autonomous University  
Madrid, Spain  
(Chapter 28)

**Edward L. Kaplan, M.D.**

Associate Professor  
University of Minnesota  
Minneapolis, Minnesota  
(Chapters 32 and 36)

**Samuel Kaplan, M.D.**

Professor of Pediatrics  
Associate Professor of Medicine  
University of Cincinnati College of Medicine  
Director, Division of Cardiology  
Children's Hospital Medical Center  
Cincinnati, Ohio  
(Chapter 33)

**Isamu Kawabori, M.D.**

Assistant Professor  
Department of Pediatrics (Cardiology)  
University of Washington School of Medicine  
Seattle, Washington  
(Chapter 17)

**Stanley E. Kirkpatrick M.D.**

Assistant Professor of Pediatrics  
Associate Director of Pediatric Cardiology  
University of California-San Diego  
School of Medicine  
La Jolla, California  
(Chapter 11)

**Ronald M. Lauer, M.D.**

Professor of Pediatrics  
University of Iowa  
Iowa City, Iowa  
(Chapter 46)

**Martin H. Lees, M.D.**

Professor of Pediatrics  
Director of Pediatric Cardiology  
University of Oregon Health Sciences Center  
Portland, Oregon  
(Chapter 39)

**Jerome Liebman, M.D.**

Professor of Pediatrics  
Case Western Reserve University School of Medicine  
Director of Pediatric Cardiology  
Rainbow Babies and Children's Hospital  
Cleveland, Ohio  
(Chapter 3)

**Jennifer M. H. Loggie, M.B., B.Ch.**

Professor of Pediatrics  
Associate Professor of Pharmacology  
University of Cincinnati College of Medicine  
The Children's Hospital Medical Center  
Cincinnati, Ohio  
(Chapter 41)

**Russell V. Lucas, Jr., M.D.**

Professor of Pediatrics  
University of Minnesota  
Minneapolis, Minnesota  
(Chapter 27)

**Paul R. Lurie, M.D.**

Professor of Pediatrics  
University of Southern California School of Medicine  
Head, Division of Cardiology  
Children's Hospital of Los Angeles  
Los Angeles, California  
(Chapter 29)

**Douglas D. Mair, M.D.**

Assistant Professor of Pediatrics  
Mayo Medical School  
Consultant, Pediatric Cardiology  
Mayo Clinic  
Rochester, Minnesota  
(Chapter 25)

**Robert C. McKnight, M.D.**

Assistant Professor of Radiology  
Washington University Medical School  
The Edward Mallinckrodt Institute of Radiology  
St. Louis, Missouri  
(Chapter 12)

**Richard A. Meyer, M.D.**

Associate Professor of Pediatrics  
University of Cincinnati College of Medicine  
Division of Cardiology  
Children's Hospital Medical Center  
Cincinnati, Ohio  
(Chapter 5)

**James H. Moller, M.D.**

Professor of Pediatrics  
University of Minnesota  
Minneapolis, Minnesota  
(Chapter 38)

**Arthur J. Moss, M.D.**

Professor and Chairman  
Department of Pediatrics  
UCLA School of Medicine  
Los Angeles, California  
(Chapter 9)

**Iraj Nazarian, M.D.**

Chief Department of Pathology Laboratory  
Queen Pahlavi Foundation  
Cardiovascular Medical Center  
Tehran, Iran  
(Chapter 34)

**Catherine A. Neill, M.D., F.R.C.P. (Lond.)**

Associate Professor of Pediatrics and Cardiologist  
Johns Hopkins University and Hospital  
Baltimore, Maryland  
(Chapter 47)



## CONTRIBUTORS

**Henry N. Neufeld, M.D.**

Professor of Medicine  
Chaim Sheba Professor of Cardiology  
Sackler School of Medicine  
Tel Aviv University  
Tel Aviv, Israel  
(Chapter 21)

**Jacqueline A. Noonan, M.D.**

Professor and Chairman  
Department of Pediatrics  
University of Kentucky Medical Center  
Lexington, Kentucky  
(Chapter 26)

**James J. Nora, M.D.**

Professor of Pediatrics  
Director of Pediatric Cardiology  
University of Colorado Medical Center  
Denver, Colorado  
(Chapter 1)

**George R. Noren, M.D.**

Assistant Chief of Pediatrics  
Hennepin County Medical Center  
Associate Professor of Pediatrics  
University of Minnesota  
Minneapolis, Minnesota  
(Chapter 36)

**Milton H. Paul, M.D.**

Director, Division of Cardiology  
The Willis J. Potts Children's Heart Center  
The Children's Memorial Hospital  
Professor of Pediatrics  
Northwestern University Medical School  
Chicago, Illinois  
(Chapter 19)

**Robert Plonsey, Ph.D.**

Professor and Chairman  
Department of Biomedical Engineering  
Case Western Reserve University  
Cleveland, Ohio  
(Chapter 3)

**Patricia Ann Randall, M.D.**

Assistant Professor and Chief  
Cardiovascular Radiology Section  
State University of New York  
Upstate Medical Center  
Syracuse, New York  
(Chapter 21)

**Thomas A. Riemenschneider, M.D.**

Associate Professor  
Department of Pediatrics  
School of Medicine  
University of California—Davis  
Davis, California  
Chief, Cardiovascular Pediatrics

Sacramento Medical Center  
Sacramento, California  
(Chapter 9)

**Donald G. Ritter, M.D.**

Associate Professor of Pediatrics  
Mayo Medical School  
Chairman, Division of Pediatric Cardiology  
Mayo Clinic  
Rochester, Minnesota  
(Chapter 25)

**Nigel Roberts, M.D.**

Assistant Professor  
Department of Pediatrics  
UCLA School of Medicine  
Los Angeles, California  
(Chapter 43)

**Amnon Rosenthal, M.D.**

Associate Professor of Pediatrics  
Harvard Medical School  
Senior Associate in Cardiology  
Children's Hospital Medical Center  
Boston, Massachusetts  
(Chapter 18)

**Herbert D. Ruttenberg, M.D.**

Associate Professor and Director  
Division of Pediatric Cardiology  
University of Utah College of Medicine  
Salt Lake City, Utah  
(Chapter 20)

**Samuel O. Sapin, M.D.**

Regional Director  
Department of Education and Research  
Southern California Permanente Medical Group  
Los Angeles, California  
Clinical Professor of Pediatrics  
Division of Cardiology  
UCLA School of Medicine  
Los Angeles, California  
(Chapter 4)

**Gerold L. Schiebler, M.D.**

Professor and Chairman  
Department of Pediatrics  
College of Medicine  
University of Florida  
Gainesville, Florida  
(Chapter 16)

**Roland E. Schmidt, M.D.**

Associate Professor of Pediatrics  
University of Oregon  
Health Sciences Center  
Eugene, Oregon  
(Chapter 27)

**Bijan Siassi, M.D.**

Director, Division I  
Department of Pediatric Cardiology  
Queen Pahlavi Heart Hospital  
Tehran, Iran  
(Chapter 34)

**Norman J. Sissman, M.D.**

Professor of Pediatrics  
Director of Pediatric Cardiology  
College of Medicine and Dentistry of New Jersey—  
Rutgers Medical School  
Raritan Valley Hospital  
Green Brook, New Jersey  
(Chapter 13)

**Madison S. Spach, M.D.**

Professor of Pediatrics  
Duke University Medical Center  
Durham, North Carolina  
(Chapter 8)

**Nancy A. Staley, M.D.**

Director, Clinical Electron Microscopy Laboratory  
Department of Pathology  
Veterans Administration Hospital  
Assistant Professor  
University of Minnesota  
Minneapolis, Minnesota  
(Chapter 36)

**Leonard Steinfeld, M.D.**

Professor of Pediatrics (Cardiology)  
Director of Pediatric Cardiology  
The Mount Sinai School of Medicine  
New York, New York  
(Chapter 31)

**Arnold W. Strauss, M.D.**

Fellow in Pediatric Cardiology  
Washington University Medical School  
St. Louis, Missouri  
(Chapter 12)

**Cecille O. Sunderland, M.D.**

Associate Professor of Pediatrics  
(Pediatric Cardiology)  
University of Oregon Health Sciences Center  
Portland, Oregon  
(Chapter 39)

**Norman S. Talner, M.D.**

Professor of Pediatrics  
Yale University School of Medicine  
Director of Pediatric Cardiology and Attending  
Physician  
Yale-New Haven Hospital  
New Haven, Connecticut  
(Chapter 42)

**Lodewyk H. S. Van Mierop, M.D.**

Professor of Pediatrics (Cardiology) and Pathology  
College of Medicine  
University of Florida  
Gainesville, Florida  
(Chapter 16)

**Richard Van Praagh, M.D.**

Professor of Pathology and Research Associate in  
Cardiology  
Children's Hospital Medical Center  
Harvard Medical School  
Boston, Massachusetts  
(Chapters 22 and 24)

**Stella Van Praagh, M.D.**

Assistant Professor of Pathology and Associate in  
Cardiology  
Children's Hospital Medical Center  
Harvard Medical School  
Boston, Massachusetts  
(Chapter 24)

**Benjamin E. Victorica, M.D.**

Associate Professor of Pediatrics  
College of Medicine  
University of Florida  
Gainesville, Florida  
(Chapter 16)

**John H. K. Vogel, M.D.**

Director, Santa Barbara Heart and Lung Institute  
Head of Cardiology  
Goleta Valley Community Hospital  
Santa Barbara, California  
Clinical Associate Professor of Medicine and Pediatrics  
UCLA School of Medicine  
Los Angeles, California  
(Chapter 40)

**Lewis W. Wannamaker, M.D.**

Professor of Pediatrics and of Microbiology  
University of Minnesota  
Minneapolis, Minnesota  
Career Investigator, American Heart Association  
(Chapter 32)

**William H. Weidman, M.D.**

Professor of Pediatrics  
Mayo Medical School  
Consultant, Pediatric Cardiology  
Mayo Clinic  
Rochester, Minnesota  
(Chapter 7)

## CONTRIBUTORS

**Paul M. Weinberg, M.D.**

Resident in Cardiac Pathology and Fellow in Pediatric Cardiology

Children's Hospital Medical Center

Harvard Medical School

Boston, Massachusetts

(Chapters 22 and 24)

**Clarence S. Weldon, M.D.**

Professor and Head, Division of Cardiothoracic Surgery

Washington University Medical School

St. Louis, Missouri

(Chapter 12)

**Ruth Whittemore, M.D.**

Clinical Professor of Pediatrics

Yale University School of Medicine

Pediatric Cardiologist

Connecticut State Department of Health

(Chapter 37)



# CONTENTS

---

## Part I/GENERAL CARDIOLOGY

1. Etiologic Aspects of Congenital Heart Diseases .....	3
<i>James J. Nora, M.D.</i>	
2. Fetal Circulation and Alterations at Birth .....	11
<i>Forrest H. Adams, M.D.</i>	
3. Electrocardiography .....	18
<i>Jerome Liebman, M.D., and Robert Plonsey, Ph.D.</i>	
4. Vectorcardiography .....	62
<i>Samuel O. Sapin, M.D.</i>	
5. Echocardiography .....	85
<i>Richard A. Meyer, M.D.</i>	
6. Cardiac Catheterization .....	107
<i>Jay M. Jarmakani, M.D.</i>	

## Part II/CONGENITAL DEFECTS

7. Defects of the Atrial Septum and Endocardial Cushion .....	129
<i>Robert H. Feldt, M.D., and William H. Weidman, M.D.</i>	
8. Defects of the Ventricular Septum .....	140
<i>Thomas P. Graham, Jr., M.D., Harvey W. Bender, M.D., and Madison S. Spach, M.D.</i>	
9. Left Ventricular-Right Atrial Communication .....	161
<i>Thomas A. Riemenschneider, M.D., and Arthur J. Moss, M.D.</i>	
10. The Ductus Arteriosus .....	165
<i>Michael A. Heymann, M.D.</i>	
11. Congenital Aortic Stenosis .....	178
<i>William F. Friedman, M.D., and Stanley E. Kirkpatrick, M.D.</i>	
12. Coarctation of the Aorta .....	199
<i>Alexis F. Hartmann, Jr., M.D., David Goldring, M.D., Arnold W. Strauss, M.D., Antonio Hernandez, M.D., Robert C. McKnight, M.D., and Clarence S. Weldon, M.D.</i>	
13. Anomalies of the Aortic Arch Complex .....	210
<i>Norman J. Sissman, M.D.</i>	
14. Obstructive Lesions of the Right Ventricle and the Pulmonary Arterial Tree ...	226
<i>George C. Emmanouilides, M.D., M.S.</i>	

15. Congenital Absence of the Pulmonary Valve .....	258
<i>George C. Emmanouilides, M.D., M.S.</i>	
16. Anomalies of the Tricuspid Valve Resulting in Stenosis or Incompetence .....	262
<i>Lodewyk H. S. Van Mierop, M.D., Gerold L. Schiebler, M.D., and Benjamin E. Victorica, M.D.</i>	
17. "Tetrad of Fallot" .....	276
<i>Warren G. Guntheroth, M.D., and Isamu Kawabori, M.D.</i>	
18. Tricuspid Atresia .....	289
<i>Amnon Rosenthal, M.D.</i>	
19. D-Transposition of the Great Arteries .....	301
<i>Milton H. Paul, M.D.</i>	
20. Corrected Transposition (L-Transposition) of the Great Arteries: Splenic Syndromes (Asplenia, Polysplenia) .....	338
<i>Herbert D. Ruttenberg, M.D.</i>	
21. Double Outlet Right Ventricle .....	355
<i>Henry N. Neufeld, M.D. and Patricia Ann Randall, M.D.</i>	
22. Double Outlet Left Ventricle .....	367
<i>Richard Van Praagh, M.D., and Paul M. Weinberg, M.D.</i>	
23. Single and Common Ventricle .....	381
<i>Larry P. Elliott, M.D., Peter R. Bream, M.D., and Ira H. Gessner, M.D.</i>	
24. Malposition of the Heart .....	394
<i>Richard Van Praagh, M.D., Paul M. Weinberg, M.D., and Stella Van Praagh, M.D.</i>	
25. Truncus Arteriosus .....	417
<i>Douglas D. Mair, M.D., and Donald G. Ritter, M.D.</i>	
26. Hypoplastic Left Ventricle .....	430
<i>Jacqueline A. Noonan, M.D.</i>	
27. Anomalous Venous Connections, Pulmonary and Systemic .....	437
<i>Russell V. Lucas, Jr., M.D., and Roland E. Schmidt, M.D.</i>	
28. Arteriovenous Fistulas .....	470
<i>M. Quero Jiménez, M.D., F. Acerete Guillén, M.D., and M. C. Castro Gussoni, M.D.</i>	
29. Abnormalities and Diseases of the Coronary Vessels .....	482
<i>Paul R. Lurie, M.D.</i>	
30. Endocardial Fibroelastosis .....	496
<i>Alois R. Hastreiter, M.D., and Elizabeth A. Fisher, M.D.</i>	
31. Diseases of Mitral Valve .....	506
<i>Leonard Steinfeld, M.D.</i>	

## Part III/INFECTIOUS DISEASES

32. Acute Rheumatic Fever .....	515
<i>Lewis W. Wannamaker, M.D., and Edward L. Kaplan, M.D.</i>	
33. Chronic Rheumatic Heart Disease .....	533
<i>Samuel Kaplan, M.D.</i>	
34. Rheumatic Heart Disease in Developing Countries .....	547
<i>Iraj Aryanpur, M.D., Iraj Nazarian, M.D., and Bijan Siassi, M.D.</i>	

35. Infective Endocarditis .....	551
<i>Sidney Blumenthal, M.D.</i>	
36. Nonrheumatic Inflammatory Cardiovascular Diseases .....	559
<i>George Noren, M.D., Edward L. Kaplan, M.D., and Nancy A. Staley, M.D.</i>	

## Part IV/CONNECTIVE TISSUE: METABOLIC AND DE-GENERATIVE DISEASES

37. Metabolic and Nutritional Diseases .....	579
<i>Ruth Whittemore, M.D., and Joan L. Caddell, M.D.</i>	
38. Mucopolysaccharidoses, Friedreich's Ataxia, Progressive Muscular Dystrophy, Juvenile Rheumatoid Arthritis, Marfan Syndrome, and Amyloidosis .....	603
<i>Ray C. Anderson, M.D., Ph.D., and James H. Moller, M.D.</i>	

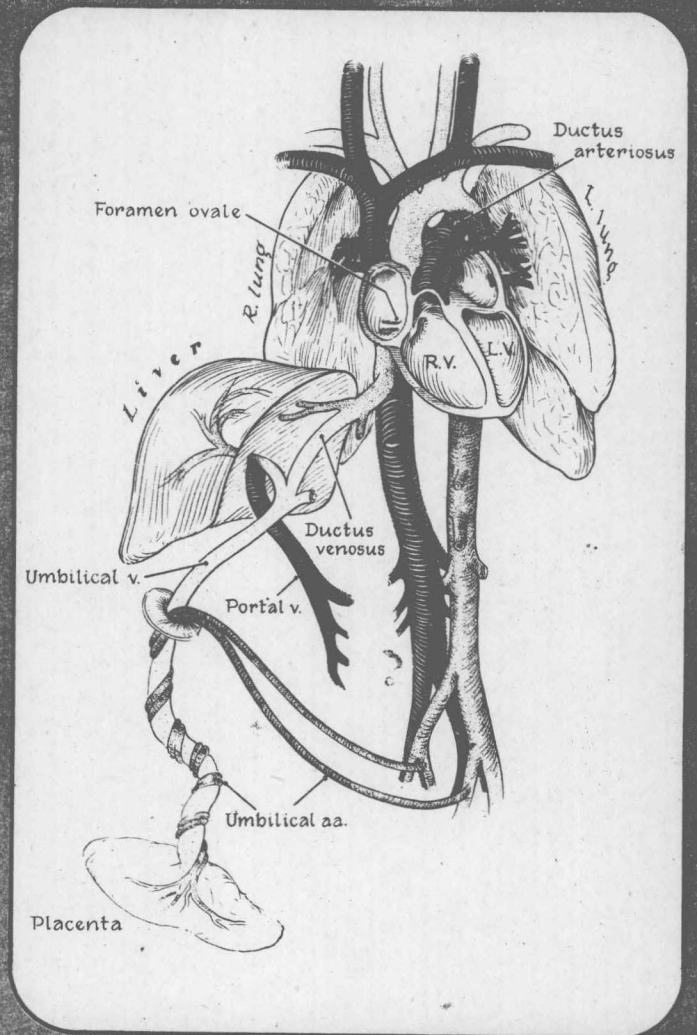
## Part V/SPECIAL PROBLEMS

39. Heart Disease in the Newborn .....	619
<i>Martin H. Lees, M.D., and Cecille O. Sunderland, M.D.</i>	
40. Pulmonary Hypertension .....	629
<i>John H. K. Vogel, M.D.</i>	
41. Systemic Hypertension .....	645
<i>Jennifer M. H. Loggie, M.B., B.Ch.</i>	
42. Heart Failure .....	660
<i>Norman S. Talner, M.D.</i>	
43. Arrhythmias .....	676
<i>Nigel Roberts, M.D., and Henry Gelband, M.D.</i>	
44. Cardiac Tumors .....	694
<i>Jesse E. Edwards, M.D.</i>	
45. Postoperative Syndromes .....	699
<i>Mary Allen Engle, M.D.</i>	
46. Atherosclerosis .....	709
<i>Guy A. Carter, M.D., and Ronald M. Lauer, M.D.</i>	
47. The Adolescent and Young Adult with Congenital Heart Disease .....	719
<i>Catherine A. Neill, M.D., F.R.C.P. (Lond.), and Lulu M. Haroutunian, M.D.</i>	

Part VI/APPENDIX .....	727
------------------------	-----

INDEX .....	733
-------------	-----





# Part 1

## GENERAL CARDIOLOGY