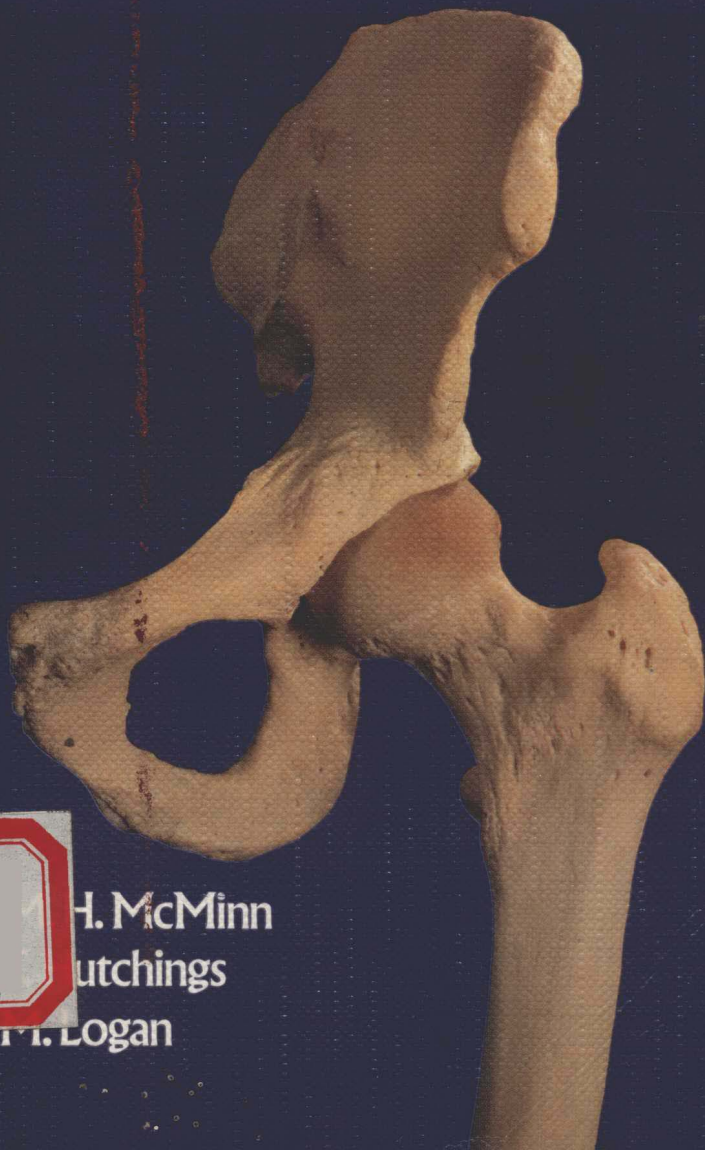


PICTURE TESTS IN HUMAN ANATOMY



H. McMinn
Cutchings

D. F. Logan

Contents

	Pages
Head, neck and spine	5-39
Upper limb	40-55
Thorax	56-64
Abdomen	65-82
Lower limb	83-104
Answers	105-126
Index	127-128

PICTURE TESTS IN Human Anatomy

R.M.H. McMinn, MD, PhD, FRCS

Emeritus Professor of Anatomy
Royal College of Surgeons of England
and University of London,
Senior Lecturer in Anatomy (part-time),
Royal Free Hospital School of Medicine
University of London

R.T. Hutchings,

Freelance Photographer,
Formerly Chief Medical Laboratory Scientific Officer
Department of Anatomy
Institute of Basic Medical Sciences
Royal College of Surgeons of England

B.M. Logan, FMA

Prosector
Department of Anatomy
Institute of Basic Medical Sciences
Royal College of Surgeons of England



YEAR BOOK MEDICAL PUBLISHERS, INC.

Titles in this series, published or being developed, include:

Diagnostic Picture Tests in Pediatrics
Picture Tests in Human Anatomy
Diagnostic Picture Tests in Oral Medicine
Diagnostic Picture Tests in Orthopedics
Diagnostic Picture Tests in Infectious Diseases
Diagnostic Picture Tests in Dermatology
Diagnostic Picture Tests in Ophthalmology
Diagnostic Picture Tests in Rheumatology
Diagnostic Picture Tests in Obstetrics/Gynecology
Diagnostic Picture Tests in Neurology
Diagnostic Picture Tests in Sports Injuries
Picture Tests in Surgical Diagnosis

Copyright © R.M.H. McMinn, R.T. Hutchings & B.M. Logan, 1986
Published by Wolfe Medical Publications Ltd, 1986
Printed by Grafos, Arte Sobre Papel, Barcelona, Spain

This book is copyrighted in England and may not be reproduced by any means in whole or part.
Distributed in North America, Canada, Hawaii and Puerto Rico by Year Book Medical Publishers, Inc.
by arrangement with Wolfe Medical Publications Ltd.

Library of Congress Cataloging in Publication Data

McMinn, R.M.H. (Robert Matthew Hay)
Picture tests in anatomy.

Includes index.

1. Anatomy, Human – Atlases. 2. Anatomy, Human – Examinations, Questions, etc. I. Hutchings, R.T. II. Logan, B.M. III. Title. [DNLM: 1. Anatomy – Atlases. 2 Anatomy – Examination Questions. QS 18 M478p]
QM25.M24 1986 611'.0076 85-17896
ISBN 0-8151-5836-X
Depósito legal: B. 824-1986

Preface

This book is designed for students of Anatomy as a learning aid in preparing for practical and oral examinations. The answers to most of the questions usually involve more than just a straightforward identification. You may have to think about such features as muscle actions, nerve supplies, courses, surface markings, lymphatic drainage or development. In reviewing over 200 pictures you have the opportunity of being reminded of many anatomical facts that may be encountered in examinations. We hope that you will find the book to be an interesting and relevant means of self-assessment that will give you confident reinforcement of the knowledge you have, and perhaps indicate areas to which you should devote further study.

Good luck with your examinations!

The illustrations presented in this text have been taken from the authors' published Wolfe Color Atlases:

A Color Atlas of Human Anatomy (1980 and later reprints of the Life-size Edition and 1985 smaller size paperback version)

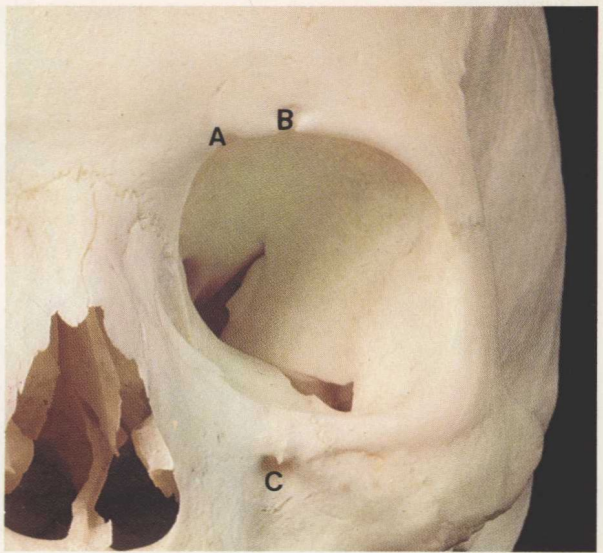
A Color Atlas of Head and Neck Anatomy (1981)

A Color Atlas of Foot and Ankle Anatomy (1982)

A Color Atlas of Applied Anatomy (1984)

Contents

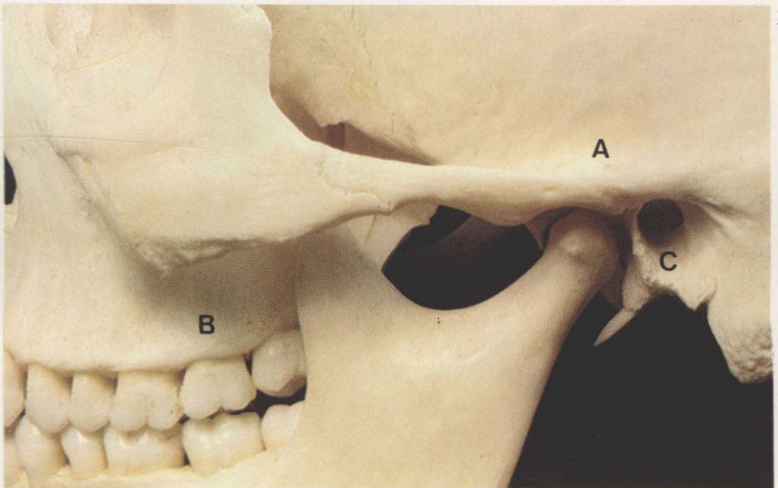
	Pages
Head, neck and spine	5-39
Upper limb	40-55
Thorax	56-64
Abdomen	65-82
Lower limb	83-104
Answers	105-126
Index	127-128



1

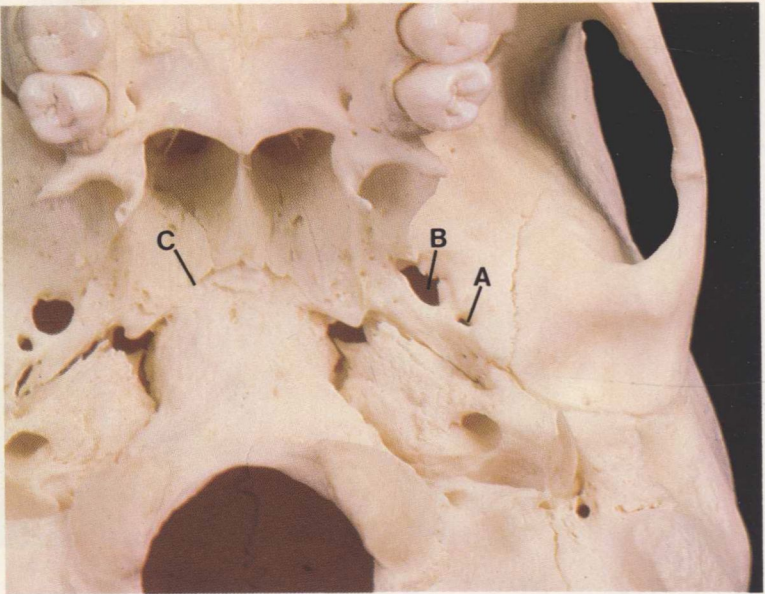
1 Name the notches A and B and their contents.
What is attached above and below C?

2 What muscle fibres lie at A?
What is attached at B?
What forms the bony meatus C?



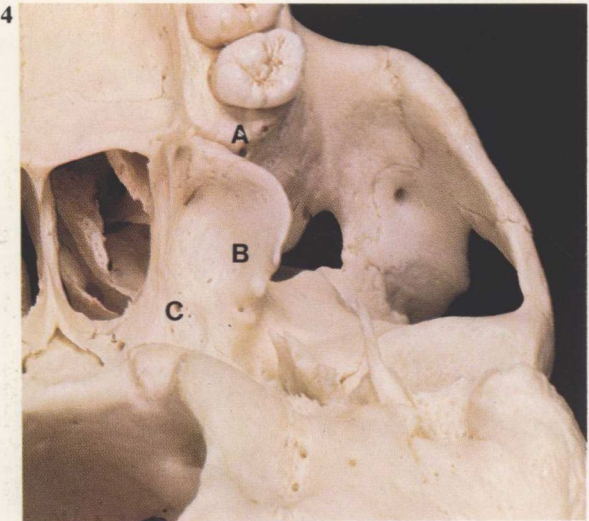
2

3

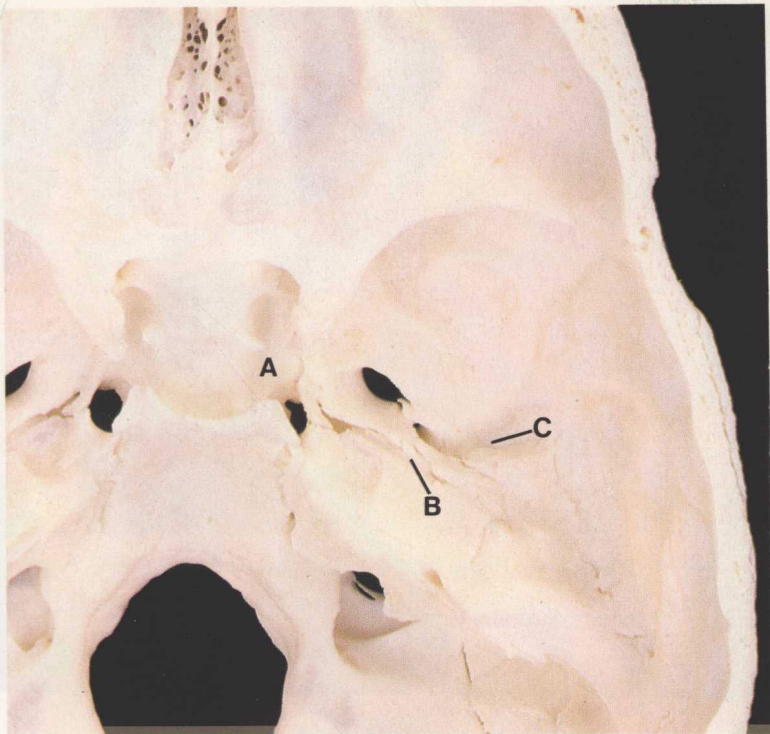


3 Name the foramina A, B and C and their contents.

4 Name the features A, B and C. What is attached to them?

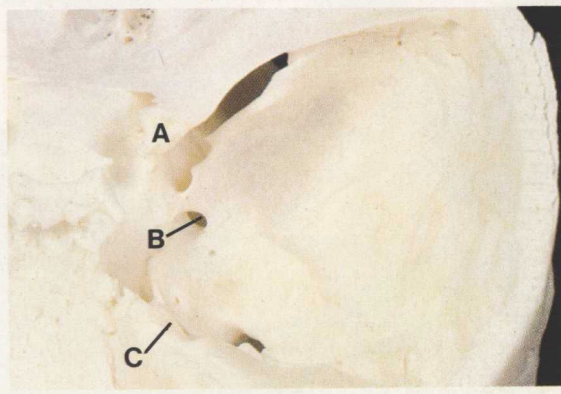


6

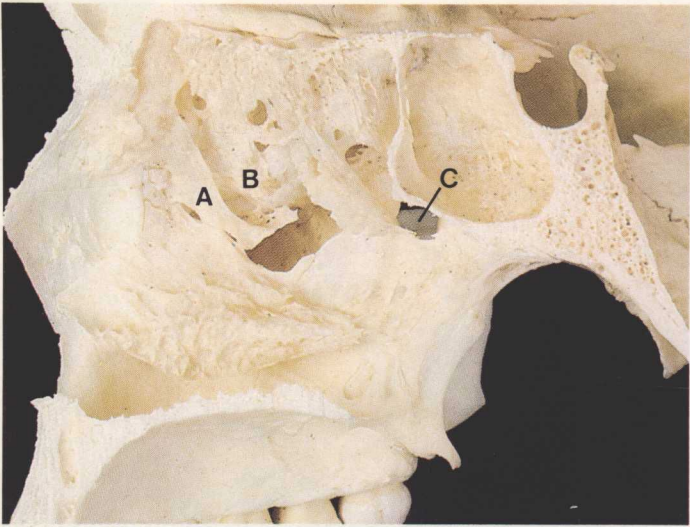


5 What lies in the grooves A, B and C?

6 Name the features A, B and C and their associated structures.



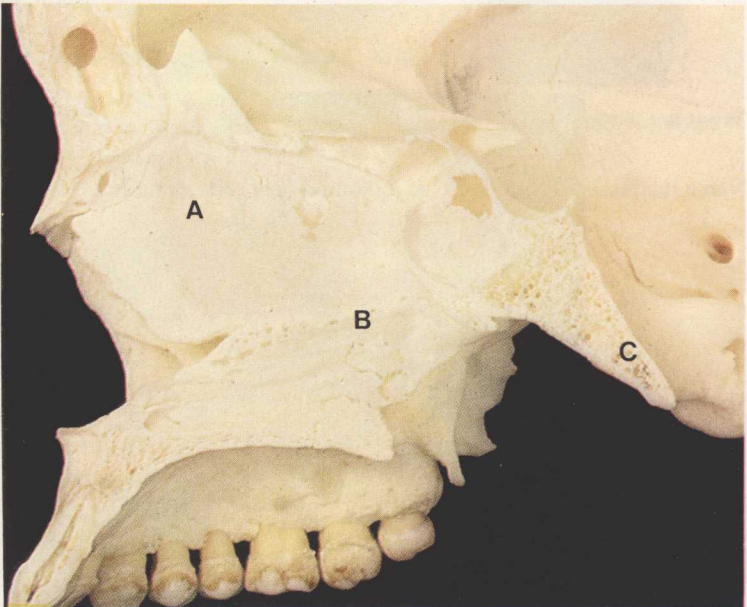
7

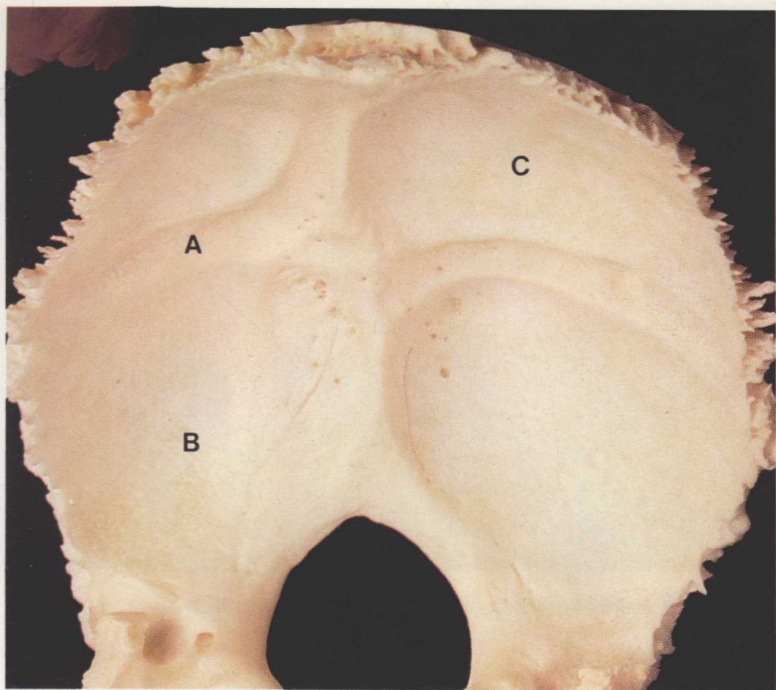


7 Name the features A, B and C and their associated structures.

8 Name the bones A, B and C.

8

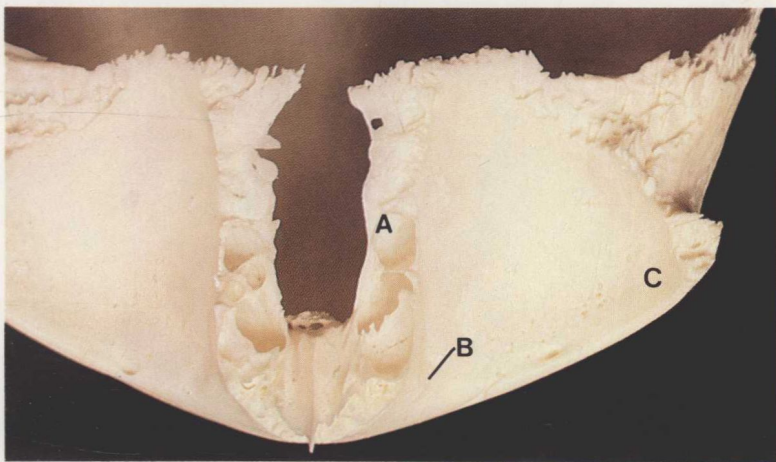




9

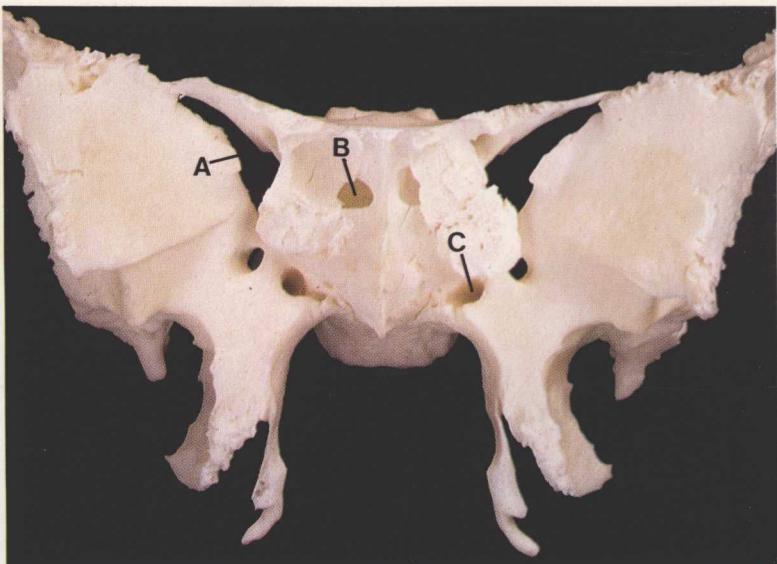
9 What occupies the areas A, B and C?

10 Name the features A, B and C and their associated structures.



10

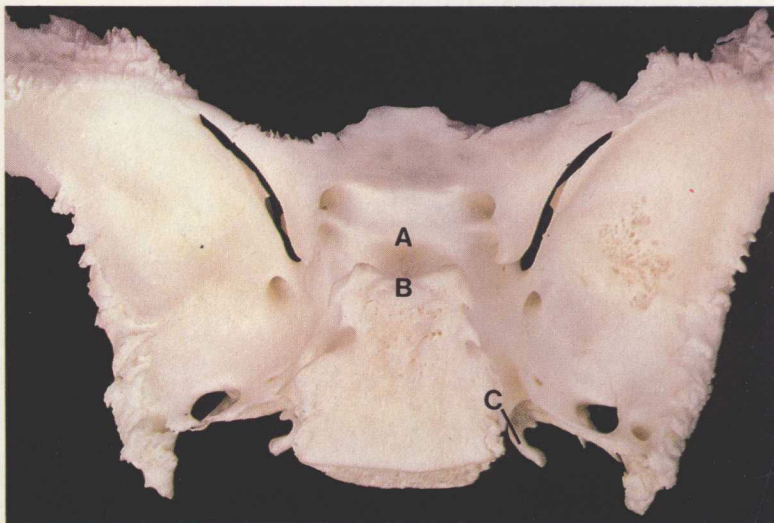
11



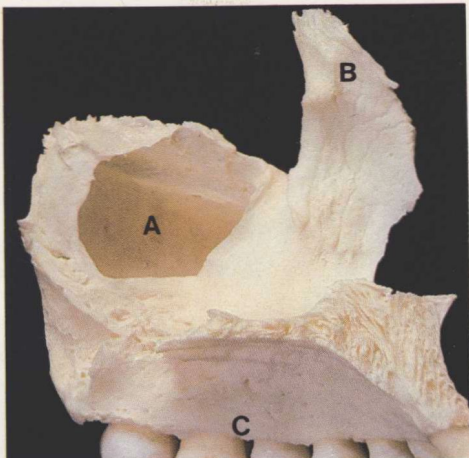
11 What features are interconnected by the spaces A, B and C?

12 Name the features A, B and C and their associated structures.

12

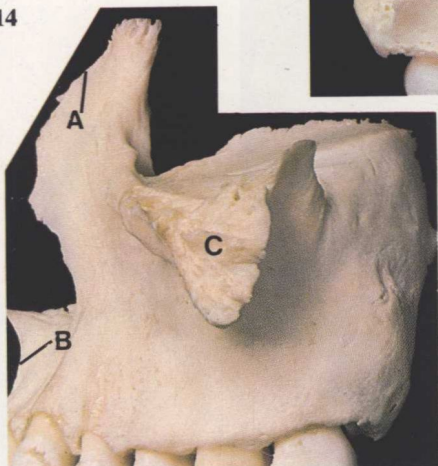


13



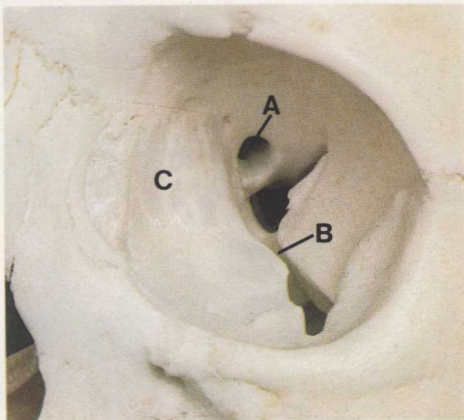
13 In a complete skull, what bones help to make aperture A smaller? Name the parts B and C.

14



14 What articulates with the bone edges A, B and C?

15



15 Name the features A, B and C and their associated structures.

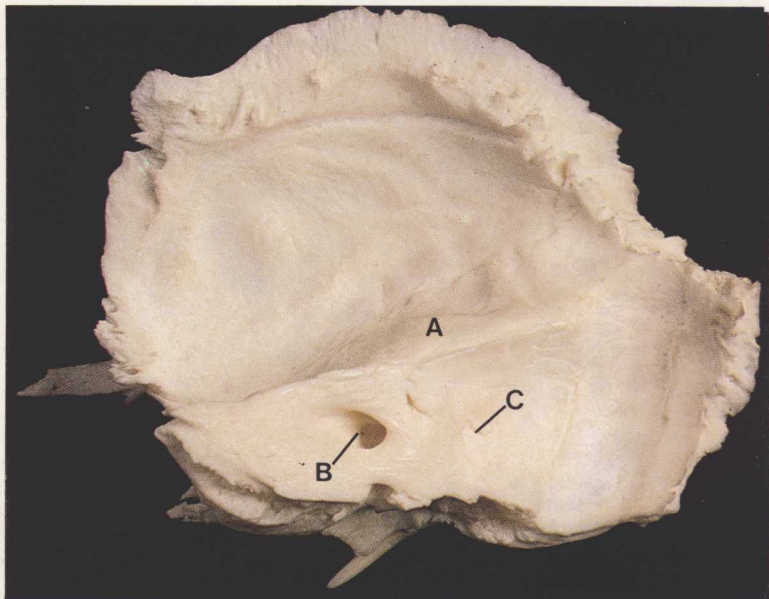
16



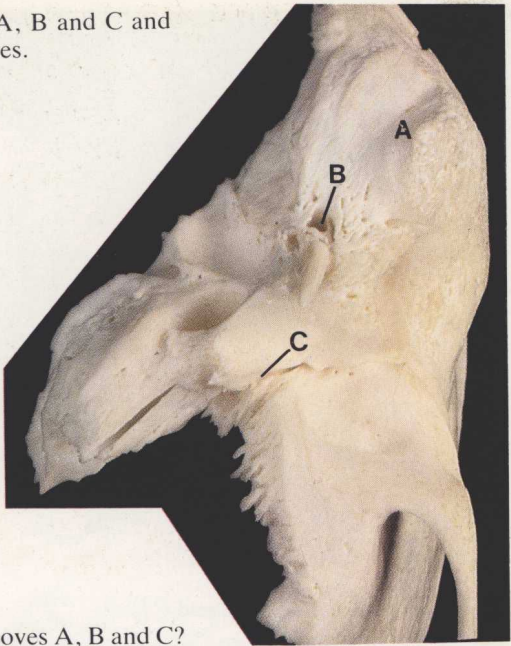
16 Name the features A, B and C.

17 Name the features A, B and C and their associated structures.

17

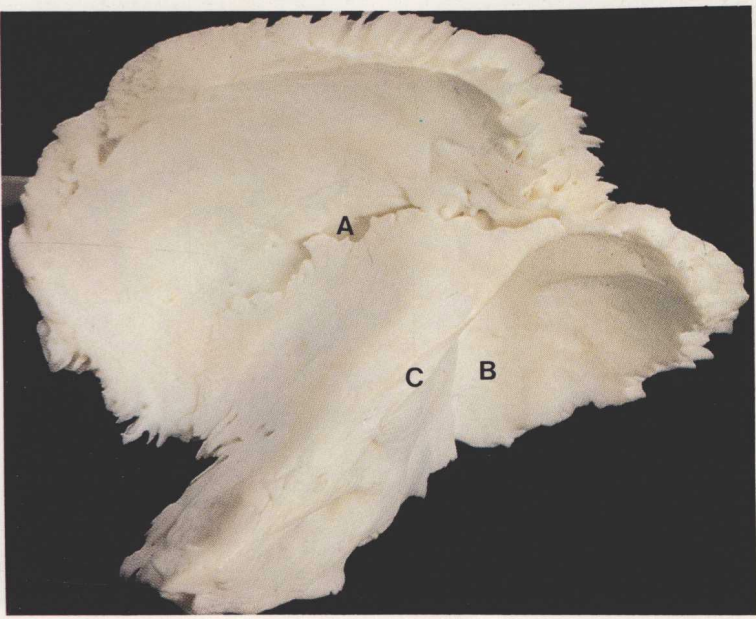


18 Name the features A, B and C and their associated structures.



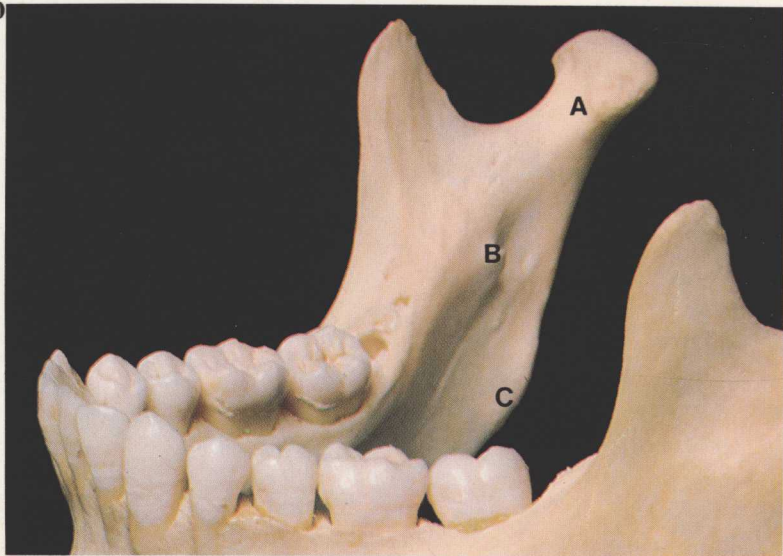
18

19 What lies in the grooves A, B and C?



19

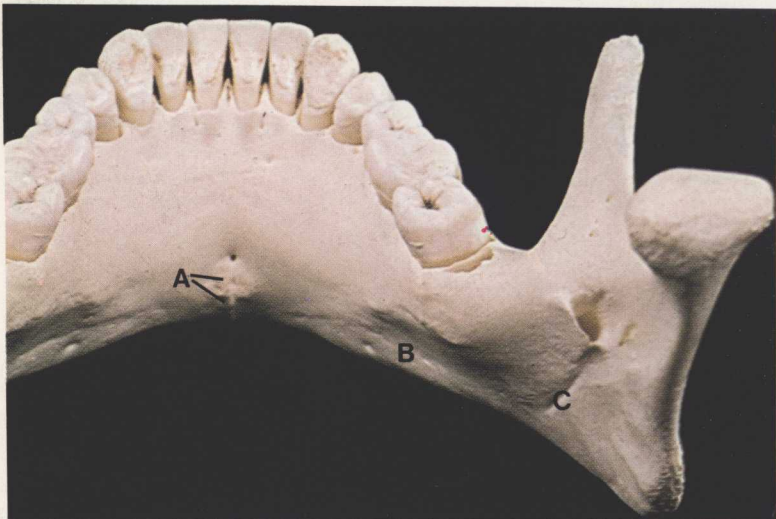
20

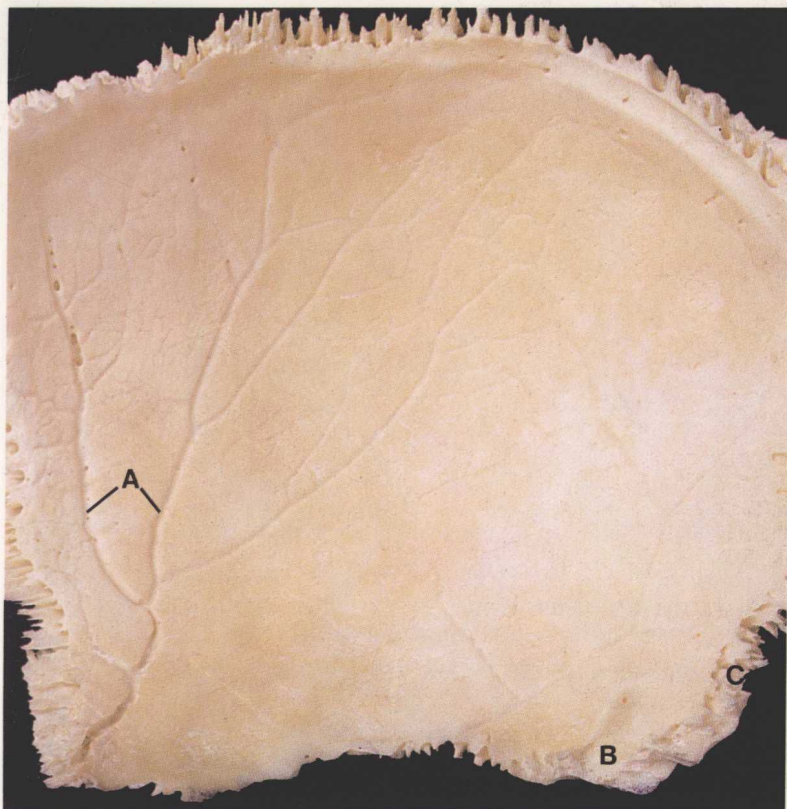


20 What is attached at A, B and C?

21 What is attached at A?
What lies at B and C?

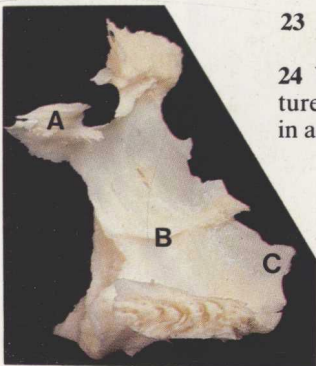
21





22 What lies in the grooves A and B?
In an intact skull, in which suture does the margin C take part?

23



23 Identify A, B and C.

24 Where are the features A, B and C found in an intact skull?

24

