

TEXTBOOK OF **CLINICAL GASTROENTEROLOGY AND HEPATOLOGY**

Second Edition

EDITED BY

C. J. HAWKEY

JAIME BOSCH

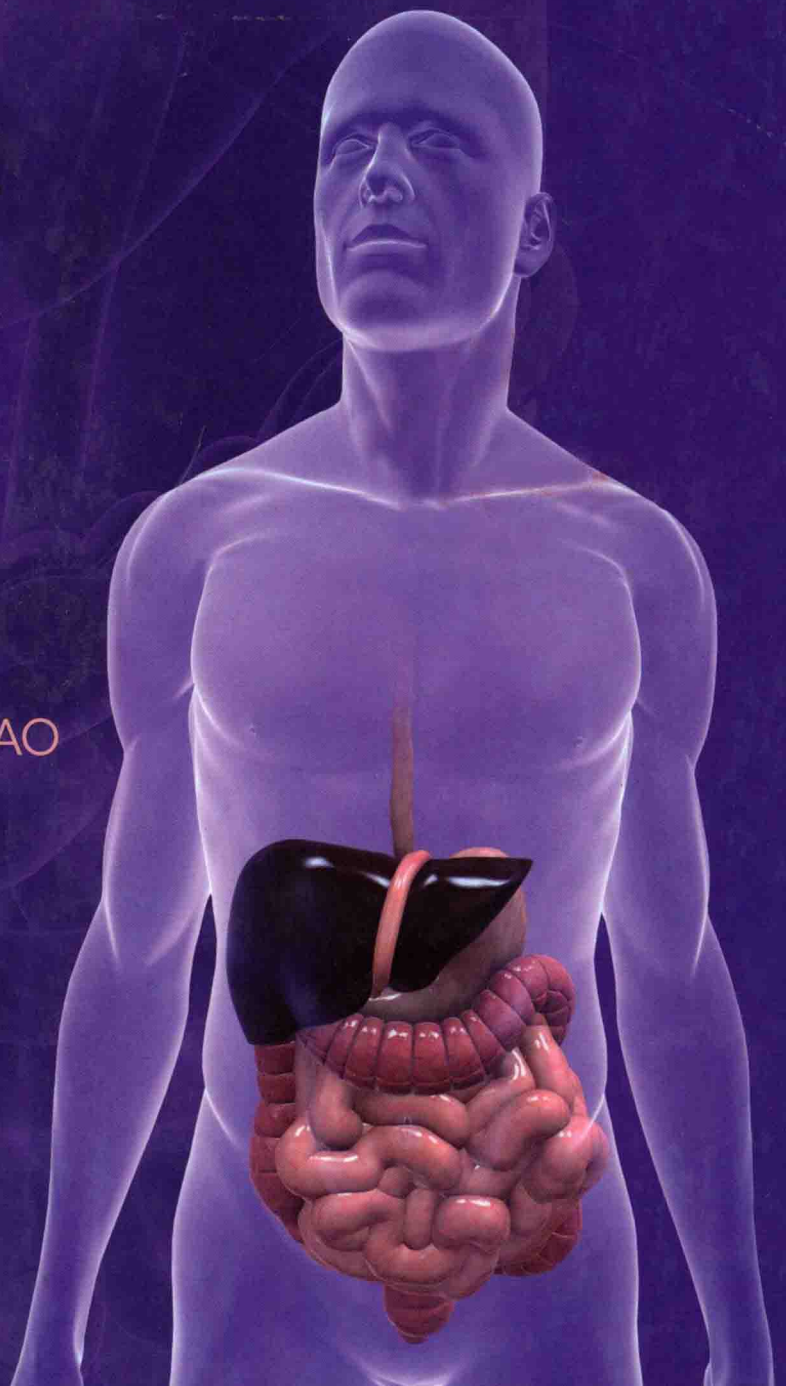
JOEL E. RICHTER

GUADALUPE GARCIA-TSAO

FRANCIS K. L. CHAN



 **WILEY-BLACKWELL**



Textbook of Clinical Gastroenterology and Hepatology

SECOND EDITION

EDITORS

C. J. Hawkey FMedSci

Professor of Gastroenterology
Nottingham Digestive Diseases Centre
University of Nottingham and Nottingham University Hospitals
Nottingham, UK

Jaime Bosch MD, PhD

Chair of Medicine
Head, Hepatic Hemodynamic Laboratory, Liver Unit
Hospital Clínic-IDIBAPS, University of Barcelona;
Director, Biomedical Research Centre Network of Hepatic and Digestive Diseases (CIBERehd), National Institute of Health Carlos III
Ministry of Science and Innovation
Barcelona, Spain

Joel E. Richter MD, FACP, MACG

Hugh Culverhouse Professor of Medicine
Director, Division of Gastroenterology and Nutrition
Director, Joy M. Culverhouse Center for Esophageal Diseases
University of South Florida
Tampa, FL, USA

Guadalupe Garcia-Castro MD

Professor of Medicine
Section of Digestive Diseases
Yale University, School of Medicine
New Haven;
Veterans Affairs Connecticut Healthcare System
West Haven, CT, USA

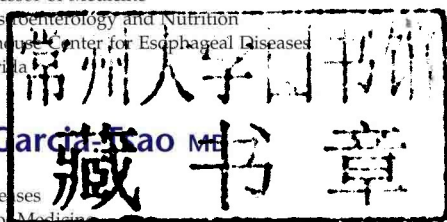
Francis K. L. Chan MD

Professor of Medicine
Chief of Gastroenterology & Hepatology
Associate Dean (Clinical)
Department of Medicine & Therapeutics
The Chinese University of Hong Kong
Hong Kong SAR, China



WILEY-BLACKWELL

A John Wiley & Sons, Ltd., Publication



This edition first published 2012 © 2012 by Blackwell Publishing Ltd
First edition published 2005, © 2005 Elsevier, Inc.

Blackwell Publishing was acquired by John Wiley & Sons in February 2007. Blackwell's publishing program has been merged with Wiley's global Scientific, Technical and Medical business to form Wiley-Blackwell.

Registered office: John Wiley & Sons, Ltd, The Atrium, Southern Gate, Chichester, West Sussex, PO19 8SQ, UK

Editorial offices: 9600 Garsington Road, Oxford, OX4 2DQ, UK
The Atrium, Southern Gate, Chichester, West Sussex, PO19 8SQ, UK
350 Main Street, Malden, MA 02148-5020, USA

For details of our global editorial offices, for customer services and for information about how to apply for permission to reuse the copyright material in this book please see our website at www.wiley.com/wiley-blackwell

The right of the author to be identified as the author of this work has been asserted in accordance with the UK Copyright, Designs and Patents Act 1988.

All rights reserved. No part of this publication may be reproduced, stored in a retrieval system, or transmitted, in any form or by any means, electronic, mechanical, photocopying, recording or otherwise, except as permitted by the UK Copyright, Designs and Patents Act 1988, without the prior permission of the publisher.

Designations used by companies to distinguish their products are often claimed as trademarks. All brand names and product names used in this book are trade names, service marks, trademarks or registered trademarks of their respective owners. The publisher is not associated with any product or vendor mentioned in this book. This publication is designed to provide accurate and authoritative information in regard to the subject matter covered. It is sold on the understanding that the publisher is not engaged in rendering professional services. If professional advice or other expert assistance is required, the services of a competent professional should be sought.

The contents of this work are intended to further general scientific research, understanding, and discussion only and are not intended and should not be relied upon as recommending or promoting a specific method, diagnosis, or treatment by physicians for any particular patient. The publisher and the author make no representations or warranties with respect to the accuracy or completeness of the contents of this work and specifically disclaim all warranties, including without limitation any implied warranties of fitness for a particular purpose. In view of ongoing research, equipment modifications, changes in governmental regulations, and the constant flow of information relating to the use of medicines, equipment, and devices, the reader is urged to review and evaluate the information provided in the package insert or instructions for each medicine, equipment, or device for, among other things, any changes in the instructions or indication of usage and for added warnings and precautions. Readers should consult with a specialist where appropriate. The fact that an organization or Website is referred to in this work as a citation and/or a potential source of further information does not mean that the author or the publisher endorses the information the organization or Website may provide or recommendations it may make. Further, readers should be aware that Internet Websites listed in this work may have changed or disappeared between when this work was written and when it is read. No warranty may be created or extended by any promotional statements for this work. Neither the publisher nor the author shall be liable for any damages arising herefrom.

Library of Congress Cataloging-in-Publication Data

Textbook of clinical gastroenterology and hepatology / editors, C.J. Hawkey . . . [et al.]. – 2nd ed.
p. ; cm.

Rev. ed. of: Clinical gastroenterology and hepatology / editors, Wilfred M. Weinstein, C.J. Hawkey, Jaime Bosch. 2005.

Includes bibliographical references and index.

ISBN-13: 978-1-4051-9182-1 (hardcover : alk. paper)

ISBN-10: 1-4051-9182-1 (hardcover : alk. paper)

I. Hawkey, C. J. II. Clinical gastroenterology and hepatology.

[DNLM: 1. Digestive System Diseases—diagnosis. 2. Digestive System Diseases—therapy. 3. Liver Diseases—diagnosis. 4. Liver Diseases—therapy. WI 141]

LC classification not assigned

616.3'3—dc23

2011029724

A catalogue record for this book is available from the British Library.

Wiley also publishes its books in a variety of electronic formats. Some content that appears in print may not be available in electronic books.

Set in 8.75/12 pt Palatino by Toppan Best-set Premedia Limited
Printed and bound in Singapore by Markono Print Media Pte Ltd

**Textbook of Clinical
Gastroenterology
and Hepatology**

Companion website

This book is accompanied by a website:

www.textbookclinicalgastrohep.com

The website includes:

- Over 85 high-definition surgical videos of diagnostic and therapeutic endoscopic procedures
- 300+ MCQs written to mirror the American College of Gastroenterology postgraduate course exams
- More than 35 management protocol charts for different diseases, all fully downloadable and editable, to help clinicians tailor the management programs for different patients
- All 850+ illustrations, available as downloadable digital files for use in scientific presentations.

List of contributors

Juan G. Abraldes MD, MMSc

Hepatic Hemodynamic Laboratory
Liver Unit, Institut de Malalties Digestives i Metabòliques
University of Barcelona, CIBERehd
Barcelona, Spain

Ahmed Abu Shanab MD

Alimentary Pharmabiotic Centre
Department of Medicine
University College Cork
Cork, Ireland

Austin G. Acheson MB, Bch, MD, FRCS

Division of GI Surgery
Nottingham University Hospitals
Nottingham, UK

Feras T. Alissa MBBS, MD

Department of Pediatrics
University of Pittsburgh School of Medicine
Children's Hospital of Pittsburgh of UPMC
Pittsburgh, PA, USA

Majid Almadi MBBS, FRCPC, MSc (Epi)

Department of Gastroenterology
King Khalid University Hospital
King Saud University
Riyadh, Saudi Arabia

Haitham M. Al-Salama MD

Director of Research Programmes
Qatar Foundation
Doha, Qatar

Bhupinder Anand MD, PhD

Professor of Medicine
Baylor College of Medicine;
Staff Physician
Michael E. DeBakey VA Medical Center
Houston, TX, USA

Jervoise Andreyev MA, PhD, FRCP

Consultant Gastroenterologist in Pelvic Radiation Disease
The GI Unit
The Royal Marsden NHS Foundation Trust
London, UK

Nadir Arber MD, MSc, MHA

Professor of Medicine and Gastroenterology
Yeichel and Helen Lieber Professor for Cancer Research
Head, Department of Cancer Prevention
The Integrated Cancer Prevention Center
Gastroenterology and Liver Institute
Tel-Aviv Sourasky Medical Center;
Sackler Faculty of Medicine
Tel-Aviv University
Tel-Aviv, Israel

Christian Arnold MD

Department of Gastroenterology
Klinikum Friedrichshafen
Friedrichshafen, Germany

Tarik Asselah MD, PhD

Service d'Hépatologie
Hôpital Beaujon
University of Paris
Clichy, France

John C. Atherton MD

Professor of Gastroenterology and Head of School of Clinical Sciences
Nottingham Digestive Diseases Centre
University of Nottingham and Nottingham University Hospitals
Nottingham, UK

Ashok Attaluri MD

Division of Gastroenterology and Hepatology
Department of Internal Medicine
University of Iowa Carver College of Medicine
Iowa City, IA, USA

Kiran Bambha MD, MSc

Assistant Professor of Medicine
Hepatology and Liver Transplantation
University of Colorado Anschutz Medical Campus
Aurora, CO, USA

Rafael Bañares MD

Professor of Medicine
Hepatology and Liver Unit
Hospital General Universitario Gregorio Marañón
Universidad Complutense
CIBERehd
Madrid, Spain

Matthew R. Banks BSc, PhD, FRCP

Division of Gastroenterology
University College London Hospitals
London, UK

Heike Bantel MD

Department of Gastroenterology, Hepatology and Endocrinology
Hannover Medical School
Hannover, Germany

Alan Barkun MDCM, FRCPC, MSc(Epi)

Division of Gastroenterology
McGill University and the McGill University Health Centre (MUHC)
Montreal, QC, Canada

M. Beaugrand MD

Liver Unit
Hôpital Jean Verdier
Université Paris XIII
Bondy, France

Cristina Bellarosa MD

Centro Studi Fegato
Fondazione Italiana Fegato
University of Trieste
Trieste, Italy

Pascal O. Berberat MD

Department of Surgery
Klinikum rechts der Isar
Technische Universität München
Munich, Germany

Nora V. Bergasa MD

Chief of Medicine
Metropolitan Hospital Center
New York, NY, USA

Annalisa Berzigotti MD, PhD

Hepatic Hemodynamic Laboratory
Liver Unit, Institut de Malalties Digestives i Metabòliques
University of Barcelona, CIBERehd
Barcelona, Spain

Rakesh Bhardwaj MD, FRCS (Gen Surg)

Consultant Colorectal Surgeon
Darent Valley Hospital
Dartford, UK

Adil E. Bharucha MD

Professor of Medicine
Division of Gastroenterology and Hepatology
Clinical Enteric Neuroscience Translational and Epidemiological Research
Program
Mayo Clinic
Rochester, MN, USA

Juliane Bingener MD

Associate Professor of Surgery
Division of Gastroenterology and General Surgery
Mayo Clinic
Rochester, MN, USA

Stephan C. Bischoff MD

Professor of Medicine
Director, Department of Nutritional Medicine and Immunology
University of Hohenheim
Stuttgart, Germany

Ingvar Bjarnason MD, MSc

Professor of Digestive Diseases
Department of Gastroenterology
King's College Hospital
London, UK

Jaime Bosch MD, PhD

Chair of Medicine
Head, Hepatic Hemodynamic Laboratory, Liver Unit
Hospital Clínic-IDIBAPS, University of Barcelona;
Director, Biomedical Research Centre Network of Hepatic and Digestive
Diseases (CIBERehd), National Institute of Health Carlos III
Ministry of Science and Innovation
Barcelona, Spain

Gerd Bouma MD, PhD

Department of Gastroenterology
Vrije Universiteit Medical Center
Amsterdam, The Netherlands

T. E. Bowling MD, FRCP

Consultant in Gastroenterology and Clinical Nutrition
Nottingham University Hospitals
Nottingham, UK

Thomas A. Brown MD

MetroHealth Medical Center;
Division of Gastroenterology and Hepatology
Case Western Reserve University
Cleveland, OH, USA

William R. Brugge MD

Director, Gastrointestinal Endoscopy
Massachusetts General Hospital;
Professor of Medicine
Harvard Medical School
Boston, MA, USA

Miquel Bruguera Cortada MD

Liver Unit, Hospital Clínic, and Department of Medicine
University of Barcelona
Barcelona, Spain

Jordi Bruix MD

Senior Consultant
Professor of Medicine
BCLC Group, Liver Unit
Hospital Clínic
Biomedical Research Centre
Network of Hepatic and Digestive Diseases (CIBERehd)
University of Barcelona
Barcelona, Spain

Markus W. Büchler MD

Professor and Chairman
Department of General Surgery
University of Heidelberg
Heidelberg, Germany

Alan L. Buchman MD, MSPH

Professor of Medicine and Surgery
Division of Gastroenterology
Feinberg School of Medicine
Northwestern University
Chicago, IL, USA

Nicola E. Burch MBChB, MRCP (UK) (Gastro), MSc (Hons)

Consultant Gastroenterologist
University Hospitals Coventry and Warwickshire NHS Trust
Coventry, UK

Christophe Bureau MD

Service d'Hépatogastro-Entérologie et INSERM
Université de Toulouse
Toulouse, France

Andrés Cárdenas MD, MMSc

Institut Clinic de Malalties Digestives i Metabòliques
Hospital Clinic
University of Barcelona
Barcelona, Spain

Anna Casburn-Jones MB, MRCP

Consultant Gastroenterologist
St Mary's Hospital
London, UK

Güralp O. Ceyhan MD

Department of Surgery
Klinikum rechts der Isar
Technische Universität München
Munich, Germany

Francis K.L. Chan MD

Professor of Medicine
Chief of Gastroenterology & Hepatology
Associate Dean (Clinical)
Department of Medicine & Therapeutics
The Chinese University of Hong Kong
Hong Kong SAR, China

Kenneth J. Chang MD

Chief, Division of Gastroenterology
Professor of Clinical Medicine
University of California
Irvine, CA, USA

Daniel Cherqui MD

Professor of Surgery
New York Presbyterian / Weill Cornell Medical College
New York, NY, USA

Runjan Chetty MB BCh, FFPATH, FRCPA, FCAP, FRCPath, DPhil (Oxon)

Professor and Director of Translational Pathology and Consultant GI /
Pancreatic Pathologist
Department of Cellular Pathology
Nuffield Department of Clinical
Laboratory Sciences and Oxford Biomedical Research Centre
Oxford University Hospitals Trust
University of Oxford
Oxford, UK

Winnie C.W. Chu MBChB, FRCR

Professor
Department of Diagnostic Radiology & Organ Imaging
Chinese University of Hong Kong
Hong Kong SAR, China

Guido Costamagna MD

Director, Gastrointestinal Endoscopy
Catholic University of the Sacred Heart
"A. Gemelli" Hospital
Rome, Italy

John Croese FRACP, MD

Department of Gastroenterology
The Townsville Hospital
Townsville, QLD, Australia

Abraham H. Dachman MD

Department of Radiology
The University of Chicago Medical Center
Chicago, IL, USA

Zilvinas Dambrauskas MD

Department of Surgery
Kaunas University of Medicine Hospital
Kaunas, Lithuania

Gennaro D'Amico MD

Chief of Gastroenterology
Department of Gastroenterology
Ospedale V Cervello
Palermo, Italy

Srinivasan Dasarathy MD

Departments of Gastroenterology, Hepatology and Pathobiology
Cleveland Clinic Lerner College of Medicine
Case Western Reserve University
Cleveland, OH, USA

Mark Davenport ChM FRCS (Eng), FRCS (Paeds)

Professor of Paediatric Surgery
Department of Paediatric Surgery
King's College Hospital
London, UK

Andrea De Gottardi MD, PhD

Visiting Hepatologist
Hepatic Hemodynamic Laboratory, Liver Unit
Hospital Clinic
Barcelona, Spain

Amar R. Deshpande MD

Assistant Professor of Medicine
Department of Medicine, Division of Gastroenterology
University of Miami Miller School of Medicine
Miami, FL, USA

Jean-Charles Deybach MD, PhD

Professor of Medicine
Head of Department of Biochemistry and Molecular Genetics
Centre Français des Porphyries
Hôpital Louis Mourier
Colombes, France

Daniel Dhumeaux MD

Henri Mondor Hospital
Créteil, France

Elizabeth Drewe MD

Department Clinical Immunology and Allergy
Nottingham University Hospitals
Nottingham, UK

Franz Ludwig Dumoulin MD

Head of Department of Medicine
Gemeinschaftskrankenhaus Bonn;
Associate Professor of Medicine
University of Bonn
Bonn, Germany

Andrew W. DuPont MD, MSPH

The University of Texas Health Science Center at Houston
Houston, TX, USA

Herbert L. DuPont MD

Director, Center for Infectious Diseases
Professor of Epidemiology
The University of Texas-Houston School of Public Health;
Chief, Internal Medicine Service
St. Luke's Episcopal Hospital;
Vice Chairman, Department of Medicine
Baylor College of Medicine
Houston, TX, USA

Luca Fabris MD, PhD

Assistant Professor of Gastroenterology
Department of Surgical, Oncological and Gastroenterological Sciences
University of Padua, Padua, Italy;
Liver Center and Section of Digestive Diseases
Yale University
New Haven, CT, USA

Michael B. Fallon MD

Division Director and Professor of Medicine
Division of Gastroenterology, Hepatology and Nutrition
The University of Texas Health Science Center at Houston
Houston, TX, USA

Dai-ming Fan MD, PhD

Xijing Hospital of Digestive Diseases
State Key Laboratory of Cancer Biology
Fourth Military Medical University
Xi'an, China

Patrizia Farci MD

Chief, Hepatic Pathogenesis Section
Laboratory of Infectious Diseases
National Institute of Allergy and Infectious Diseases
National Institutes of Health
Bethesda, MD, USA

Michael J.G. Farthing MD, FRCP

Vice Chancellor and Professor of Medicine
University of Sussex
Brighton, UK

Ronnie Fass MD

Professor of Medicine
University of Arizona College of Medicine;
Chief of Gastroenterology
Head, Neuroenteric Clinical Research Group
Southern Arizona VA Health Care System
Tucson, AZ, USA

Peter Ferenci MD

Professor of Medicine
Department of Internal Medicine
Gastroenterology and Hepatology
Medical University of Vienna
Vienna, Austria

Katrin Feuser PhD

Department of Nutritional Medicine
University of Hohenheim
Stuttgart, Germany

Martin H. Floch MD, MACG, AGAF, FACP

Clinical Professor of Medicine
Yale University School of Medicine
New Haven, CT, USA

Evan L. Fogel MD

Professor of Clinical Medicine
Division of Gastroenterology / Hepatology
Indiana University Health
Indianapolis, IN, USA

Alexander C. Ford MBChB, MD

Department of Academic Medicine
St. James's University Hospital
Leeds, UK

Alejandro Forner MD

Clinical Research Associate
BCLC Group, Liver Unit
ICMDM, Hospital Clinic
Biomedical Research Centre Network of Hepatic and
Digestive Diseases (CIBERehd)
University of Barcelona
Barcelona, Spain

Xavier Forns MD, PhD

Consultant in Liver Diseases
Hospital Clinic, CIBERehd, IDIBAPS
Barcelona, Spain

Paul J. Fortun BM, MRCP, FRACP

Consultant Gastroenterologist
Department of Gastroenterology
Royal Cornwall Hospitals NHS Trust
Truro, UK

Bruce M. Fox MBBS, MRCP, FRCR, PGCE

Consultant GI Radiologist
Honorary University Fellow
Derriford Hospital
Plymouth, UK

Juan Miguel Abdo Francis MD

Division of Medicine
Hospital General de México
Mexico City, Mexico

Helmut Friess MD

Professor and Chairman
Department of Surgery
Klinikum rechts der Isar
Technische Universität München
Munich, Germany

James Frith MB ChB MRCP, PhD

Academic Clinical Lecturer
UK NIHR Biomedical Research Centre in Ageing
Institute for Ageing and Health
Newcastle University
Newcastle upon Tyne, UK

Juan Carlos García-Pagán MD

Senior Consultant in Hepatology
Hepatic Hemodynamic Laboratory
Liver Unit, Hospital Clínic, CIBERehd
Barcelona, Spain

Guadalupe Garcia-Tsao MD

Professor of Medicine
Section of Digestive Diseases
Yale University, School of Medicine
New Haven;
Veterans Affairs Connecticut Healthcare System
West Haven, CT, USA

Robert H. Geelkerken MD PhD

Consultant Vascular Surgeon
Department of Vascular Surgery
Medisch Spectrum Twente
Enschede, The Netherlands

Robert M. Genta MD

Chief for Academic Affairs
Caris Diagnostics / Miraca;
Clinical Professor of Pathology and Medicine (Gastroenterology)
University of Texas Southwestern Medical Center
Irving, TX, USA

Paula Ghaneh MBChB, MD, FRCS

Reader in Surgery
Department of Molecular and Clinical Cancer Medicine
Institute of Translational Medicine
University of Liverpool
Liverpool, UK

Kevin A. Ghassemi MD

Division of Digestive Diseases
David Geffen School of Medicine at UCLA
Los Angeles, CA, USA

Alexander Gimson FRCP

Clinical Director, Division of Medicine
Consultant Physician and Hepatologist
Liver Transplantation Unit
Cambridge University Hospitals NHS Foundation Trust
Cambridge, UK

Pere Ginès MD

Chairman, Liver Unit
Professor of Medicine
Hospital Clínic
University of Barcelona
Barcelona, Spain

Ajay Goel PhD

Director, Epigenetics and Cancer Prevention
Baylor Research Institute and Charles A Sammons Cancer Center
Baylor University Medical Center
Dallas, TX, USA

Martin Goetz MD, PhD

Internist, Gastroenterologie
I. Medizinische Klinik und Poliklinik
Universitätsmedizin Mainz
Mainz, Germany

Tamas A. Gonda MD

Assistant Professor of Medicine
Division of Digestive and Liver Diseases
Columbia University Medical Center
New York, NY, USA

Gregory J. Gores MD

Reuben R. Eisenberg Professor of Medicine
Chair, Division of Gastroenterology and Hepatology
Center for Basic Research in Digestive Diseases
Mayo Clinic
Rochester, MN, USA

Penny A. Gowland PhD

Sir Peter Mansfield Magnetic Resonance Centre
School of Physics and Astronomy
University of Nottingham
Nottingham, UK

Andrea Grin MD, FRCPC

Resident in Pathology
Department of Laboratory Medicine and Pathobiology
University of Toronto
Toronto, ON, Canada

Roberto J. Groszmann MD

Department of Internal Medicine
Digestive Diseases Section
Yale University School of Medicine
New Haven, CT, USA

Madhusudan Grover MBBS

Mayo Clinic
Rochester, MN, USA

Sushovan Guha MD, PhD

Assistant Professor
Department of Gastroenterology, Hepatology, and Nutrition
The University of Texas MD Anderson Cancer Center
Houston, TX, USA

Neil Gupta MD, MPH

Fellow
Division of Gastroenterology / Hepatology
University of Kansas Medical Center
Kansas City Veterans Administration
Kansas City, MO, USA

Aliya G. Hasan MD

Assistant Professor of Medicine
Division of Gastroenterology and Hepatology
University of Colorado Denver
Aurora, CO, USA

C. J. Hawkey FMedSci

Professor of Gastroenterology
Nottingham Digestive Diseases Centre
University of Nottingham and Nottingham University Hospitals
Nottingham, UK

Philip N. Hawkins PhD, FRCP

National Amyloidosis Centre
Centre for Amyloidosis and Acute Phase Proteins
Division of Medicine
University College London Medical School
London, UK

J. Eileen Hay MB, ChB

Professor of Medicine
Consultant in Gastroenterology and Hepatology
Mayo Clinic
Rochester, MN, USA

J. Michael Henderson MD

Chief Quality Officer and Staff Surgeon
Cleveland Clinic
Cleveland, OH, USA

Karin Herrmann MD

Associate Professor of Radiology
Institute of Clinical Radiology
Ludwig-Maximilians-University of Munich
Munich, Germany

Tiberiu Herscovici MD

Research Fellow
Neuroenteric Clinical Research Group
Southern Arizona VA Health Care System
Tucson, AZ, USA

Frank Hoentjen MD, PhD

Assistant Professor in Medicine
Department of Gastroenterology
Radboud University Medical Center
Nijmegen, The Netherlands

Joyce Wai Yi Hui MBChB, FRCR

Department of Diagnostic Radiology and Organ Imaging
Prince of Wales Hospital
The Chinese University of Hong Kong
Shatin, Hong Kong SAR, China

David J. Humes BSc MBBS MRCS PhD

NIHR Lecturer in Surgery
Nottingham Digestive Diseases Centre
Nottingham University Hospitals
Nottingham, UK

Haruhiro Inoue MD

Professor
Faculty of Medicine
Showa University;
Showa University International Training Center for Endoscopy (SUITE)
Digestive Disease Center
Showa University Northern Yokohama Hospital
Yokohama, Japan

Christian S. Jackson MD

Chief, Section of Gastroenterology
Loma Linda VA Healthcare System;
Assistant Professor
Loma Linda University Medical Center
Loma Linda, CA, USA

Simon A. Jackson MBBS, FRCS, FRCR

Consultant GI Radiologist
Imaging Directorate
Derriford Hospital
Plymouth, UK

Janusz A. Jankowski MD, PhD, FRCP, FACC

Consultant Gastroenterologist
Digestive Diseases Centre UHL Trust
Leicester;
James Black Senior Fellow and Professor
University of Oxford
Oxford;
Fellow and Professor
Cancer Research UK and Queen Mary, University of London
London, UK

Dennis M. Jensen MD

CURE / Digestive Disease Research Center
David Geffen School of Medicine at UCLA
Los Angeles, CA, USA

Robert T. Jensen MD

Chief, Cell Biology Section
Digestive Diseases Branch
National Institute of Diabetes and Kidney Diseases
National Institutes of Health
Bethesda, MD, USA

Michael D. Johnson MD

Hepato-Pancreato-Biliary and Transplant Surgery
Cleveland Clinic
Cleveland, OH, USA

Rome Jutabha MD

Director, UCLA Center for Small Bowel Diseases
Division of Digestive Diseases
David Geffen School of Medicine at UCLA
Los Angeles, CA, USA

Peter J. Kahrilas MD

Gilbert H. Marquardt Professor of Medicine
Department of Medicine
Division of Gastroenterology
Feinberg School of Medicine
Northwestern University
Chicago, IL, USA

Anthony N. Kalloo MD

The Moses and Helen Golden Paulson Professor of Gastroenterology
The Johns Hopkins University School of Medicine;
Chief, Division of Gastroenterology and Hepatology
Johns Hopkins Hospital
Baltimore, MD, USA

Patrick S. Kamath MD

Professor of Medicine
Consultant and Vice Chair (Education)
Division of Gastroenterology and Hepatology
Mayo Clinic
Rochester, MN, USA

Philip O. Katz MD

Clinical Professor of Medicine
Jefferson Medical College
Thomas Jefferson University;
Chairman, Division of Gastroenterology
Albert Einstein Medical Center
Philadelphia, PA, USA

Ciarán P. Kelly MD

Professor of Medicine
Harvard Medical School;
Director of the Celiac Center
Beth Israel Deaconess Medical Center
Boston, MA, USA

David J. Kerr CBE, MA, MD, DSc, FRCP(Glas,Lon & Edin), FRCGP(Hon), FMedSci

Professor of Cancer Medicine
Nuffield Department of Clinical and Laboratory Sciences
University of Oxford
Oxford, UK;
Adjunct Professor of Medicine
Professor of Cancer Therapeutics
Weill-Cornell College of Medicine
New York, NY, USA

David Kershenovich MD, PhD

Department of Experimental Medicine
Faculty of Medicine, UNAM
Hospital General de México
Mexico City, Mexico

Arjun Khosla MD

University Hospitals Case Medical Center
Cleveland, OH, USA

Ralf Kiesslich MD, PhD

Head of Endoscopy Department
I. Medizinische Klinik und Poliklinik
Universitätsmedizin Mainz
Mainz, Germany

Kazufumi Kimura MD, PhD

Research Fellow
Microbiology and Immunology
School of Biomedical, Biomolecular and Chemical Sciences
University of Western Australia
Perth, WA, Australia

Michael S. Kipper MD

Clinical Professor of Radiology
University of California at San Diego
San Diego, CA, USA

Rajan Kochar MD, MPH

Assistant Professor of Medicine
Division of Gastroenterology, Hepatology and Nutrition
The University of Texas Health Science Center at Houston
Houston, TX, USA

Jeroen J. Kolkman MD

Consultant Gastroenterologist
Medisch Spectrum Twente
Enschede, The Netherlands

Ayman Koteish MD

Assistant Professor of Medicine
Division of Gastroenterology
The Johns Hopkins University School of Medicine
Baltimore, MD, USA

Thomas O.G. Kovacs MD

Professor of Medicine
CURE / Digestive Disease Research Center
David Geffen School of Medicine at UCLA
Los Angeles, CA, USA

Benjamin Krevsky MD, MPH

Professor of Medicine
Temple University School of Medicine
Philadelphia, PA, USA

Olivier Lada PhD

Service d'Hépatologie
Hôpital Beaujon
University of Paris
Clichy, France

Maria Eliana Lai MD

Professor of Medicine
Department of Medical Sciences
University of Cagliari
Policlinico Universitario
Monserrato, Cagliari, Italy

Richard H. Lash MD

Chief Medical Officer
Caris Diagnostics / Miraca;
Clinical Associate Professor
University of Texas Southwestern Medical Center
Irving, TX, USA

James Y.W. Lau FRCS (Edin)

Department of Surgery
Chinese University of Hong Kong
Hong Kong SAR, China

Konstantinos N. Lazaridis MD

Division of Gastroenterology and Hepatology
Center for Basic Research in Digestive Diseases
Mayo Clinic
Rochester, MN, USA

Philippe Lefere MD

Department of Radiology
Stedelijk Ziekenhuis
Roeselare, Belgium

Daniel A. Leffler MD

Assistant Professor of Medicine
Division of Gastroenterology and Hepatology;
Director of Clinical Research at the Celiac Center
Beth Israel Deaconess Medical Center
Harvard Medical School
Boston, MA, USA

Keith Leiper MD (deceased)

Consultant Gastroenterologist
Department of Gastroenterology
Royal Liverpool University Hospital
Liverpool, UK

Vivian Y.F. Leung PDDR, PhD

Senior Radiographer
Department of Diagnostic Radiology & Organ Imaging
Chinese University of Hong Kong
Hong Kong SAR, China

Joel S. Levine MD

Professor of Medicine
Division of Gastroenterology and Hepatology
University of Colorado Denver
Aurora, CO, USA

Blair S. Lewis MD, PC

Clinical Professor of Medicine
Mount Sinai School of Medicine
New York, NY, USA

Charles J. Lightdale MD

Professor of Clinical Medicine
Division of Digestive and Liver Diseases
Columbia University Medical Center
New York, NY, USA

Keith D. Lindor MD

Executive Vice Provost Health Solutions
Arizona State University
Tempe, AZ, USA

Dileep N. Lobo MS, DM, FRCS, FACS

Professor of Gastrointestinal Surgery
Division of Gastrointestinal Surgery
Nottingham Digestive Diseases Centre NIHR Biomedical Research Unit
Nottingham University Hospitals
Nottingham, UK

Alain Luciani MD, PhD

Henri Mondor Hospital
Créteil, France

Michael R. Lucey MD

Professor of Medicine
Chief, Section of Gastroenterology and Hepatology
University of Wisconsin School of Medicine and Public Health
Madison, WI, USA

Ryan D. Madanick MD

Assistant Professor of Medicine
Department of Medicine, Division of Gastroenterology and Hepatology
University of North Carolina School of Medicine
Chapel Hill, NC, USA

Yashwant R. Mahida MD

Professor of Medicine
Institute of Infection, Immunity and Inflammation
Nottingham University Hospitals
Nottingham, UK

Erica Makin MSc, FRCS(Paeds)

Specialist Registrar
King's College Hospital
London, UK

Giuseppe Malizia MD

Consultant in Gastroenterology
Department of Gastroenterology
Ospedale V Cervello
Palermo, Italy

Jayan Mannath MD, MRCP

Research Fellow
Nottingham Digestive Diseases Centre and Biomedical Research Unit
University of Nottingham and Nottingham University Hospitals
Nottingham, UK

Michael P. Manns MD

Professor and Chairman
Department of Gastroenterology, Hepatology and Endocrinology
Hannover Medical School
Hannover, Germany

Magnus J. Mansard MS

Senior Registrar
Department of Surgical Gastroenterology
Asian Institute of Gastroenterology
Hyderabad, India

Patrick Marcellin MD, PhD

Service d'Hépatologie
Hôpital Beaujon
University of Paris
Clichy, France

Luca Marciani PhD

Lecturer in GI MRI
Nottingham Digestive Diseases Centre and NIHR Biomedical Research Unit
School of Clinical Sciences
University of Nottingham and Nottingham University Hospitals
Nottingham, UK

Michele Marchese MD

Gastrointestinal Endoscopy Unit
Catholic University of the Sacred Heart
"A. Gemelli" Hospital
Rome, Italy

Barry J. Marshall MD, FRACP

Clinical Professor
Microbiology and Immunology
School of Biomedical, Biomolecular and Chemical Sciences
University of Western Australia
Perth, WA, Australia

Cindy Matsen MD

Resident, General Surgery
University of Utah
Salt Lake City, UT, USA

Catherine McCrann MD

Gastroenterology Fellow
Yale University
New Haven, CT, USA

Arthur J. McCullough MD

Professor of Medicine
Cleveland Clinic Lerner College of Medicine
Case Western Reserve University
Digestive Diseases Institute
Cleveland, OH, USA

George B. McDonald MD

Professor of Medicine
University of Washington;
Gastroenterology / Hepatology Section
Fred Hutchinson Cancer Research Center
Seattle, WA, USA

Dermot McGovern MD, PhD

Cedars-Sinai IBD Center
Los Angeles, CA, USA

Donald P. McManus BSc(Hons), PhD, DSc

National Health and Medical Research Council of Australia Senior
Principal Research Fellow
Professor and Laboratory Head
Queensland Institute of Medical Research
Brisbane, QLD, Australia

A. Merrie MBChB, PhD, FRACS

Consultant Surgeon
Discipline of Oncology
Faculty of Medical and Health Sciences
University of Auckland
Auckland, New Zealand

Rachel S. Midgley MD, BSc(Hons) MB ChB(Hons) FRCP, PhD

Consultant Medical Oncologist and DH / HEFCE Clinical Senior Lecturer
Department of Oncology
University of Oxford
Oxford, UK

Giorgina Mieli-Vergani MD, PhD

Alex Mowat Professor of Paediatric Hepatology
Department of Child Health and Institute of Liver Studies
King's College Hospital
London, UK

Hitomi Minami MD

Faculty of Medicine, Showa University
Showa University
Showa University International Training Center for Endoscopy (SUITE)
Digestive Disease Center
Showa University Northern Yokohama Hospital
Yokohama, Japan

Paul Moayyedi BSc, MB ChB, PhD, MPH, FRCP (London), FRCPC, FACG, AGAF

Director, Division of Gastroenterology
Department of Medicine
Health Sciences Centre
McMaster University
Hamilton, ON, Canada

Dana C. Moffatt MD

Division of Gastroenterology / Hepatology
Indiana University Health
Indianapolis, IN, USA

Tanya M. Monaghan BSc (Hons), BSc (Hons), BM, MRCP

Specialist Registrar in Gastroenterology
Institute of Infection, Immunity and Inflammation
Nottingham University Hospitals
Nottingham, UK

Andrew R. Moore MBChB, MRCP

Specialist Registrar in Gastroenterology
Royal Liverpool University Hospital
Clinical Research Fellow
Institute of Translational Medicine
University of Liverpool
Liverpool, UK

Rosa Miquel Morera MD

Pathology Department
Hospital Clinic and University of Barcelona
Barcelona, Spain

Koenraad J. Morteale MD

Department of Radiology
Beth Israel Deaconess Medical Center
Harvard Medical School
Boston, MA, USA

N. Mortensen MD, FRCS

Professor of Surgery
Nuffield Department of Surgery
University of Oxford
Oxford, UK

Menachem Moshkowitz MD

The Integrated Cancer Prevention Center
Gastroenterology and Liver Institute
Tel-Aviv Medical Center;
Sackler Faculty of Medicine
Tel-Aviv University
Tel-Aviv, Israel

Rami Moucari MD, PhD

Service d'Hépatologie
Hôpital Beaujon
University of Paris
Clichy, France

Chris Mulder MD, PhD

Department of Gastroenterology
Vrije Universiteit Medical Center
Amsterdam, The Netherlands

Kevin D. Mullen MD

MetroHealth Medical Center;
Division of Gastroenterology and Hepatology
Case Western Reserve University
Cleveland, OH, USA

Ulf Müller-Ladner MD

Chair, Department for Internal Medicine and Rheumatology
Justus-Liebig University Giessen;
Department for Rheumatology and Clinical Immunology
Kerckhoff Clinic
Bad Nauheim, Germany

Simon Murch PhD, FRCP, FRCPCH

Professor of Paediatrics and Child Health
Division of Metabolic and Vascular Health
Warwick Medical School
The University of Warwick
Coventry, UK

V. Raman Muthusamy MD

Director, Gastroenterology Fellowship Program, Health Sciences Associate
Clinical Professor of Medicine
H.H. Chao Comprehensive Digestive Disease Center
Division of Gastroenterology
Department of Medicine
University of California
Irvine, CA, USA

John P. Neoptolemos FMedSci

The Owen and Ellen Evans Chair of Surgery
Director Liverpool Cancer Research UK Centre
Department of Molecular and Clinical Cancer Medicine
Institute of Translational Medicine
University of Liverpool
Liverpool, UK

Leigh Neumayer MD

Professor of Surgery
University of Utah
Salt Lake City, UT, USA

Julia L. Newton MBBS, FRCP, PhD

Professor of Ageing – Medicine
UK NIHR Biomedical Research Centre in Ageing
Institute for Ageing and Health
Newcastle University
Newcastle upon Tyne, UK

Timothy T. Nostrant MD

Professor
Department of Internal Medicine
University of Michigan Health Center
Ann Arbor, MI, USA

Kjell Öberg MD, PhD

Professor of Endocrine Oncology
Department of Medical Sciences
Endocrine Oncology
Uppsala University Hospital
Uppsala, Sweden

Sebastian Obrzut MD

Assistant Professor of Radiology
University of California at San Diego
San Diego, CA, USA

John G. O'Grady MD, FRCPI

Consultant Hepatologist
Institute of Liver Studies
King's College School of Medicine
London, UK

Philippe Otal MD

Service de Radiologie
Université de Toulouse
Toulouse, France

Bergein F. Overholt MD

Center of Excellence for Treatment of Barrett's Esophagus
Thomson Cancer Survival Center
Knoxville, TN, USA

Masoud Panjehpour PhD

Center of Excellence for Treatment of Barrett's Esophagus
Thomson Cancer Survival Center
Knoxville, TN, USA

Georgios Papachristou MD

Division of Gastroenterology, Hepatology and Nutrition
Departments of Medicine
University of Pittsburgh
Pittsburgh, PA, USA

Michael C. Parker BSc, MS, FRCS, FRCS (Ed)

Fawkham Manor Hospital
Fawkham, UK

Henry P. Parkman MD

Professor of Medicine
Director, GI Motility Laboratory;
Gastroenterology Section
Department of Medicine
Temple University School of Medicine
Philadelphia, PA, USA

Stephen P. Pereira BSc, PhD, FRCP, FRCPE

Reader in Hepatology and Gastroenterology
University College London Hospitals
London, UK

David H. Perlmutter MD

Vira I. Heinz Professor and Chair
Department of Pediatrics
Professor of Cell Biology and Physiology
University of Pittsburgh School of Medicine;
Physician-in-Chief and Scientific Director
Children's Hospital of Pittsburgh of UPMC
Pittsburgh, PA, USA

Lucio Petruzzello MD

Gastrointestinal Endoscopy Unit
Catholic University of the Sacred Heart
"A. Gemelli" Hospital
Rome, Italy

Patrick R. Pfau MD

Associate Professor of Medicine
Chief of Clinical Gastroenterology
Section of Gastroenterology and Hepatology
University of Wisconsin School of Medicine and Public Health
Madison, WI, USA

Antonello Pietrangelo MD, PhD

Professor of Medicine
Head, Division of Internal Medicine
and "Mario Coppo" Liver Research Center
University Hospital of Modena
Modena, Italy

Jeffrey L. Ponsky MD

Chairman, Department of Surgery
University Hospitals of Cleveland
Cleveland, OH, USA

Todd A. Ponsky MD

Associate Professor
Division of Pediatric Surgery
Rainbow Babies & Children's Hospital
University Hospitals Case Medical Center
Cleveland, OH, USA

John J. Poterucha MD

Professor of Medicine
Division of Gastroenterology and Hepatology
Mayo Clinic
Rochester, MN, USA

Benjamin K. Poulose MD, MPH

Assistant Professor
Department of Surgery
Vanderbilt University Medical Center
Nashville, TN, USA

Raoul Poupon MD

Université Pierre et Marie Curie
AP-Hôpitaux de Paris
Service d'Hépatologie
Hôpital Saint-Antoine
Paris, France

Hervé Puy MD, PhD

Professor of Medicine
Centre Français des Porphyries
Hôpital Louis Mourier
Colombes, France

Rodrigo M. Quera MD

Gastroenterologist
Clinica Las Condes
Santiago, Chile

Eamonn M. M. Quigley MD, FRCP, FACP, FACC, FRCPI

Professor of Medicine and Human Physiology
Alimentary Pharmabiotic Centre
University College Cork
Cork, Ireland

Krish Ragunath MD, DNB, MPhil, FRCP

Associate Professor and Reader in GI Endoscopy
Nottingham Digestive Diseases Centre and Biomedical Research Unit
University of Nottingham and Nottingham University Hospitals
Nottingham, UK

G. V. Rao MS, MAMS

Director and Chief of Gastrointestinal and Minimally Invasive Surgery
Department of Surgical Gastroenterology
Asian Institute of Gastroenterology
Hyderabad, India

Satish S. C. Rao MD, FRCP (Lon), PhD

Professor of Medicine
Chief, Gastroenterology / Hepatology
Director, Digestive Health Center
Medical College of Georgia
Georgia Health Sciences University
Augusta, GA;
President
American Neurogastroenterology & Motility Society / FBG
Belleville, MI, USA

D. Nageshwar Reddy MD, DM, FAMS, FRCP

Chairman and Chief Gastroenterologist
Department of Gastroenterology
Asian Institute of Gastroenterology
Hyderabad, India

Jürg Reichen MD

Professor Emeritus of Medicine
University Clinic of Visceral Surgery and Medicine
University of Berne
Berne, Switzerland

María Reig MD

Clinical Research Associate, BCLC Group
Liver Unit, ICMDM, Hospital Clinic
Biomedical Research Centre
Network of Hepatic and Digestive Diseases (CIBERehd)
University of Barcelona
Barcelona, Spain

Adrian Reuben MBBS, FRCP, FACC

Director of Liver Service
Division of Gastroenterology and Hepatology
Department of Medicine
College of Medicine
Medical University of South Carolina
Charleston, SC, USA

Melanie L. Richards MD, MHPE

Associate Professor of Surgery
Department of Gastroenterology and General Surgery
Mayo Clinic
Rochester, MN, USA

Joel E. Richter MD, FACP, MACG

Hugh Culverhouse Professor of Medicine
Director, Division of Gastroenterology and Nutrition
Director, Joy M. Culverhouse Center for Esophageal Diseases
University of South Florida
Tampa, FL, USA

Kinan Rifai MD

Department of Gastroenterology, Hepatology and Endocrinology
Hannover Medical School
Hannover, Germany

Cristina Ripoll MD

Hepatology and Liver Unit
Hospital General Universitario Gregorio Marañón
CIBERehd
Madrid, Spain

Guillermo Robles-Diaz MD

Professor of Medicine
Department of Experimental Medicine
Facultad de Medicina
Universidad Nacional Autonoma
de Hospital General de México
Mexico City, Mexico

Carlos Rodriguez de Lope MD

Clinical Research Associate, BCLC Group
Liver Unit, ICMDM, Hospital Clinic
Biomedical Research Centre Network of Hepatic and Digestive
Diseases (CIBERehd)
University of Barcelona
Barcelona, Spain

Arvey I. Rogers MD, FACP, MACG

Professor Emeritus
Department of Medicine
Division of Gastroenterology
University of Miami Miller School of Medicine
Miami, FL, USA

Pablo R. Ros MD, MPH, PhD

Theodore J. Castele University Professor and Chairman
Department of Radiology
Case Western Reserve University
University Hospitals Case Medical Center;
Radiologist-in-Chief
University Hospitals Health System
Cleveland, OH, USA

Simon Rushbrook MBBS, MRCP, PhD

Senior Clinical Fellow in Hepatology
Liver Transplantation Unit
Cambridge University Hospitals NHS Foundation Trust
Cambridge, UK

Paul Rutgeerts MD, PhD, FRCP

Division of Gastroenterology
University of Leuven
Leuven, Belgium

Priyanka Sachdeva MD, MRCP

Gastroenterology Section
Department of Medicine
Temple University School of Medicine
Philadelphia, PA, USA

V. Anik Sahni MD

Division of Abdominal Imaging and Intervention
Department of Radiology
Brigham and Women's Hospital
Harvard Medical School
Boston, MA, USA

Jose M. Sánchez-Tapias MD

Senior Consultant
Liver Unit
Hospital Clinic, CIBERehd, IDIBAPS
Barcelona, Spain

Arun J. Sanyal MD

National Amyloidosis Centre
Department of Medicine
Royal Free and University College London Medical School
Royal Free Hospital
London, UK

Prayman T. Sattianayagam MA, MRCP

Clinical Research Fellow
National Amyloidosis Centre
Centre for Amyloidosis and Acute Phase Proteins
Division of Medicine
University College London Medical School
London, UK

Tilman Sauerbruch MD

Professor of Medicine and Director
Department of Medicine I
University of Bonn
Bonn, Germany

Jürgen Schölmerich MD

Professor of Medicine
Medical Director
University Clinic Frankfurt
Frankfurt, Germany

John H. Scholefield ChM, FRCS

Professor of Surgery
Division of GI Surgery
Nottingham University Hospitals
Nottingham, UK

Ila Sethi DMRD

Department of Radiology
The University of Chicago Medical Center
Chicago, IL, USA

Fergus Shanahan MD

Alimentary Pharmabiotic Centre and Department of Medicine
University Collège Cork
Cork, Ireland

Prateek Sharma MD

Division of Gastroenterology / Hepatology
University of Kansas Medical Center
Kansas City Veterans Administration
Kansas City, MO, USA

Varun Sharma MD

Division of Gastroenterology, Hepatology and Nutrition
Department of Internal Medicine
Virginia Commonwealth University School of Medicine
Richmond, VA, USA

Stuart Sherman MD

Division of Gastroenterology / Hepatology
Indiana University Health
Indianapolis, IN, USA

Anish A. Sheth MD

Assistant Professor of Medicine
Yale University School of Medicine
New Haven, CT, USA