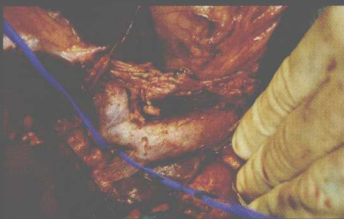
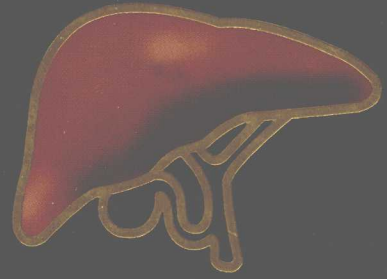


L.H. Blumgart

Belghiti • Jarnagin • DeMatteo • Chapman • Büchler • Hann • D'Angelica

SURGERY  
*of the* LIVER,  
BILIARY TRACT,  
*and* PANCREAS



Fourth Edition Volume 1

LIFE MAGAZINE

SURGICAL  
SMALL-LEAF  
BILIARY TRACT  
GIVE PAIN RELEASERS



From the Editors of LIFE

---

# **Surgery of the Liver, Biliary Tract, and Pancreas**

**Fourth Edition**

EDITOR-IN-CHIEF

**Leslie H. Blumgart, BDS, MD, DSc (Hon), FACS,  
FRCS (ENG, EDIN), FRCPS (GLAS)**

ASSOCIATE EDITORS

Jacques Belghiti, MD

William R. Jarnagin, MD, FACS

Ronald P. DeMatteo, MD, FACS

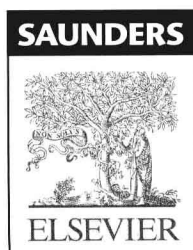
William C. Chapman, MD, FACS

Markus W. Büchler, MD

Lucy E. Hann, MD

Michael D'Angelica, MD

**VOLUME 1**



**All rights reserved.** No part of this publication may be reproduced or transmitted in any form or by any means, electronic or mechanical, including photocopying, recording, or any information storage and retrieval system, without permission in writing from the publisher. Permissions may be sought directly from Elsevier's Health Sciences Rights Department in Philadelphia, PA, USA: phone: (+1) 215 239 3804, fax: (+1) 215 239 3805, e-mail: [healthpermissions@elsevier.com](mailto:healthpermissions@elsevier.com). You may also complete your request on-line via the Elsevier homepage (<http://www.elsevier.com>), by selecting 'Customer Support' and then 'Obtaining Permissions'.

**Notice**

Knowledge and best practice in this field are constantly changing. As new research and experience broaden our knowledge, changes in practice, treatment, and drug therapy may become necessary or appropriate. Readers are advised to check the most current information provided (i) on procedures featured or (ii) by the manufacturer of each product to be administered, to verify the recommended dose or formula, the method and duration of administration, and contraindications. It is the responsibility of the practitioner, relying on his or her own experience and knowledge of the patient, to make diagnoses, to determine dosages and the best treatment for each individual patient, and to take all appropriate safety precautions. To the fullest extent of the law, neither the Publisher nor the Editors assume any liability for any injury and/or damage to persons or property arising out of or related to any use of the material contained in this book.

The Publisher

**Library of Congress Cataloging-in-Publication Data**

Surgery of the liver, biliary tract, and pancreas / [edited by] Leslie H. Blumgart. —4th ed.  
p.; cm.

Rev. ed. of: Surgery of the liver and biliary tract. 3rd ed. 2000.

Includes bibliographical references and index.

ISBN 1-4160-3256-8

1. Liver—Surgery. 2. Biliary tract—Surgery. I. Blumgart, L. H. II. Surgery of the liver and biliary tract.

[DNLM: 1. Liver—surgery. 2. Biliary Tract Surgical Procedures. 3. Pancreas—surgery.

WI 770 S9617 2006]

RD669.S87 2006

617.5'56—dc22

2005052682

*Acquisitions Editor:* Judith Fletcher  
*Developmental Editor:* Deidre Simpson  
*Publishing Services Manager:* Tina Rebane  
*Project Manager:* Jodi Kaye  
*Design Direction:* Karen O'Keefe Owens

*This book is dedicated to  
the development of surgery of the liver, biliary tract,  
and pancreas as a specialty.*

---

# Editors

**Leslie H. Blumgart, BDS, MD,  
DSc (Hon), FACS, FRCS (ENG, EDIN),  
FRCPs (GLAS)**

Enid A. Haupt Chair in Surgery  
Chief, Hepatobiliary Service  
Department of Surgery  
Memorial Sloan-Kettering Cancer Center  
New York, New York

**Jacques Belghiti, MD**

Professor and Chairman  
Department of Digestive and Transplant Surgery  
Hospital Beaujon  
Paris, France

**William R. Jarnagin, MD, FACS**

Associate Professor of Surgery  
Weill Medical College of Cornell University  
Attending Surgeon  
Memorial Sloan-Kettering Cancer Center  
New York, New York

**Ronald P. DeMatteo, MD, FACS**

Associate Professor of Surgery  
Weill Medical College of Cornell University  
Associate Attending Surgeon  
Memorial Sloan-Kettering Cancer Center  
New York, New York

**William C. Chapman, MD, FACS**

Professor and Chief  
Section of Transplantation  
Department of Surgery  
Washington University in St. Louis School of Medicine  
St. Louis, Missouri

**Markus W. Büchler, MD**

Professor and Chairman  
Department of Surgery  
University of Heidelberg  
Heidelberg, Germany

**Lucy E. Hann, MD**

Professor of Radiology  
Weill Medical College of Cornell University  
Attending Radiologist  
Memorial Sloan-Kettering Cancer Center  
New York, New York

**Michael D'Angelica, MD**

Assistant Professor of Surgery  
Weill Medical College of Cornell University  
Assistant Attending Surgeon  
Memorial Sloan-Kettering Cancer Center  
New York, New York

---

# Contributors

## **Eddie K. Abdalla, MD**

Assistant Professor of Surgery  
Department of Surgical Oncology  
The University of Texas M.D. Anderson Cancer Center  
Houston, Texas

*Portal Vein Embolization: Preoperative Portal Vein  
Embolization—A Western Perspective*

## **Ghassan K. Abou-Alfa, MD**

Instructor  
Weill Medical College of Cornell University  
Assistant Attending Physician  
Memorial Sloan-Kettering Cancer Center  
New York, New York

*Chemotherapy of Liver Tumors: Systemic Therapy for  
Hepatocellular Carcinoma; Chemotherapy of Liver  
Tumors: Systemic Therapy for Metastatic Colorectal Cancer*

## **Reid B. Adams, MD**

Associate Professor of Surgery  
University of Virginia School of Medicine  
Chief, Hepatobiliary and Pancreatic Surgery  
University of Virginia Health System  
Charlottesville, Virginia

*Intraoperative Ultrasound of the Liver: Techniques for Liver  
Resection and Transplantation*

## **N. Volkan Adsay, MD**

Associate Professor of Pathology  
Wayne State University School of Medicine  
Pathologist

The Karmanos Cancer Institute  
Harper University Hospital and Detroit Medical Center  
Detroit, Michigan  
*Tumors of the Bile Ducts—Pathologic Aspects; Pathology and  
Classification of Pancreatic and Ampullary Tumors*

## **Jatinder P. Ahluwalia, MD**

Associate Professor of Internal Medicine—Gastroenterology  
Southern Illinois University School of Medicine  
Springfield, Illinois  
*Management of Ascites in Cirrhosis and Portal Hypertension*

## **Timothy Akhurst, MBBS, MD, FRACP**

Assistant Professor of Radiology  
Weill Medical College of Cornell University  
Assistant Attending  
Memorial Sloan-Kettering Cancer Center  
New York, New York  
*The Role of Nuclear Medicine in the Diagnosis and Management  
of Hepatobiliary and Pancreatic Diseases*

## **Thomas D. Atwell, MD**

Instructor of Radiology  
Mayo Clinic College of Medicine  
Consultant, Diagnostic Radiology  
Mayo Clinic  
Rochester, Minnesota  
*Metastatic Tumors: Hepatic Metastases from Primary  
Neuroendocrine Tumors*

## **Mary T. Austin, MD, MPH**

Resident Physician  
Vanderbilt University School of Medicine  
Resident Physician  
Vanderbilt University Medical Center  
Nashville, Tennessee  
*The Mesocaval Shunt: Technique*

## **Claudio Bassi, MD**

Associate Professor  
University of Verona Faculty of Medicine  
Verona, Italy  
*Definition and Classification of Pancreatitis*

## **Christoph D. Becker, MD**

Professor of Radiology  
University of Geneva Faculty of Medicine  
Head of Abdominal Radiology and Acting Chairman  
Department of Diagnostic and Interventional Radiology  
Geneva University Hospital  
Geneva, Switzerland  
*Percutaneous Approaches to the Treatment of Gallbladder Disease*

## **Ian J. Beckingham, MD**

Section of Surgery  
University Hospital, Queen's Medical Centre  
Nottingham, United Kingdom  
*Postcholecystectomy Problems*

## **Jacques Belghiti, MD**

Professor and Chairman  
Department of Digestive and Transplant Surgery  
Hospital Beaujon  
Paris, France  
*Benign Liver Lesions; Liver Resection for Benign Disease  
and for Liver and Biliary Tumors (Liver Resection in  
Living Related Donors); Vascular Isolation Techniques  
in Liver Resection*

**Thomas V. Berne, MD**

Professor of Surgery  
 Keck School of Medicine of USC  
 Chief, Emergency (Non-Trauma) Surgery Service  
 Los Angeles County-USC Medical Center  
 Los Angeles, California  
*Liver, Biliary, and Pancreatic Injury: Liver and Bile Duct Injury*

**Anton J. Bilchik, MD, PhD, FACS**

Director, Gastrointestinal Surgical Oncology  
 Director, Gastrointestinal Program  
 Associate Director, Surgical Oncology  
 John Wayne Cancer Institute  
 Santa Monica, California  
*Ablation of Liver Tumors: Radiofrequency Thermal Ablation of Liver Tumors*

**Kenneth F. Binmoeller, MD, FACG**

Director  
 Interventional Endoscopy Service  
 California Pacific Medical Center  
 San Francisco, California  
*Interventional Endoscopy: Technical Aspects*

**Henri Bismuth**

Professor and Head  
 Department of Surgery  
 Paul Brousse Hospital  
 Villejuif, France  
*Liver Transplantation in Patients with Fulminant Hepatitis*

**Martin J. K. Blomley, MD†**

Professor of Radiology  
 Imaging Sciences Department  
 Imperial College School of Medicine  
 London, United Kingdom  
*Ultrasound of the Liver, Biliary Tract, and Pancreas*

**Leslie H. Blumgart, BDS, MD, DSc (Hon), FACS, FRCS (ENG, EDIN), FRCPs (GLAS)**

Enid A. Haupt Chair in Surgery  
 Chief, Hepatobiliary Service  
 Department of Surgery  
 Memorial Sloan-Kettering Cancer Center  
 New York, New York  
*Historical Perspective; Surgical and Radiologic Anatomy of the Liver, Biliary Tract, and Pancreas; Liver Blood Flow: Physiology, Measurement, and Clinical Relevance; Liver Hyperplasia, Hypertrophy, and Atrophy; Biliary-Enteric Anastomosis; Stones in the Common Bile Duct—Clinical Features and Open Surgical Approaches and Techniques; Biliary Stricture and Fistula: Benign Biliary Strictures; Biliary Stricture and Fistula: Biliary Fistula; Benign Tumors and Pseudotumors of the Biliary Tract; Intrahepatic and Extrahepatic Biliary Cancer; Hemobilia and Bilhemia; Liver Resection for Benign Disease and for Liver and Biliary Tumors; The Technique of Portacaval Shunt*

**P. C. Bornman, MBChB, MMed(Surg), FCS(SA), FRCS(Ed)**

Professor of Surgery  
 University of Cape Town Health Sciences Faculty  
 Head and Chief Surgeon  
 Surgical Gastroenterology Unit  
 Groote Schuur Hospital  
 Cape Town, South Africa  
*Endoscopic Therapy in the Management of Esophageal Varices: Injection Sclerotherapy and Variceal Ligation*

**Lynn Brody, MS, MD**

Assistant Professor of Radiology  
 Weill Medical College of Cornell University  
 Assistant Clinical Radiologist  
 Memorial Sloan-Kettering Cancer Center  
 New York, New York  
*Percutaneous Biopsy*

**Christoph E. Broelsch, MD, PhD, FACS**

Director of General Surgery and Transplantation  
 University of Duisburg-Essen  
 Duisburg, Germany  
*Liver Resection for Benign Disease and for Liver and Biliary Tumors (Computer-Assisted Operation Planning and Virtual Liver Resection)*

**Carlos V. R. Brown, MD**

Assistant Professor of Surgery  
 Keck School of Medicine of USC  
 Los Angeles County-USC Medical Center  
 Los Angeles, California  
*Liver, Biliary, and Pancreatic Injury: Pancreatic Injury*

**Karen T. Brown, MD**

Professor of Radiology  
 Weill Medical College of Cornell University  
 Member  
 Memorial Sloan-Kettering Cancer Center  
 New York, New York  
*Intrahepatic and Extrahepatic Biliary Cancer (Interventional Radiologic Techniques in Hilar and Intrahepatic Biliary Strictures)*

**Melissa L. Brown, MS, RD**

Clinical Dietitian  
 University of Illinois at Chicago Medical Center  
 Chicago, Illinois  
*Preoperative and Postoperative Nutrition in Hepatobiliary Surgery*

**Jordi Bruix, MD**

Associate Professor of Medicine  
 University of Barcelona School of Medicine  
 Senior Consultant  
 Barcelona Clinic Liver Cancer Group  
 Liver Unit Hospital Clinic  
 Barcelona, Spain  
*Hepatocellular Carcinoma; Liver Transplantation for Tumors*

†Deceased



**Elizabeth M. Brunt, MD**

Professor of Pathology  
Saint Louis University School of Medicine  
St. Louis, Missouri  
*Cirrhosis and Portal Hypertension: Pathologic Aspects*

**Markus W. Büchler, MD**

Professor and Chairman  
Department of Surgery  
University of Heidelberg  
Heidelberg, Germany  
*Management of Acute Pancreatitis and Complications;  
Pancreaticoduodenectomy, Distal Pancreatectomy, Segmental  
Pancreatectomy, Total Pancreatectomy, and Transduodenal  
Resection of the Papilla of Vater*

**Andrew K. Burroughs (Hon), ChB, MB, FRCP**

Professor of Hepatology  
Royal Free and University College Medical School  
Consultant Physician and Hepatologist  
Royal Free Hospital  
London, United Kingdom  
*Medical Management of Bleeding Varices*

**Giovanni Butturini, MD, PhD**

Consultant, General Surgery  
Faculty of Medicine  
University of Verona  
Verona, Italy  
*Definition and Classification of Pancreatitis*

**Iain C. Cameron, MD, FRCS**

Honorary Senior Clinical Lecturer  
University of Sheffield Medical School  
Consultant Hepatobiliary Surgeon  
Royal Hallamshire Hospital  
Sheffield, United Kingdom  
*Cholecystolithiasis and Stones in the Common Bile Duct:  
Which Approach, When?*

**Alessio Carloni, MD**

Clinic Assistant  
Department of Digestive Surgery  
University of Paris  
Paris, France  
Assistant Attending  
Department of Digestive Surgery  
Hospital Antoine Bécclère  
Paris, France

**David L. Carr-Locke, MB, BCh, DRCOG, FRCP, FACG**

Associate Professor of Medicine  
Harvard Medical School  
Director of Endoscopy  
Brigham and Women's Hospital  
Boston, Massachusetts  
*Stones in the Bile Duct: Endoscopic and Percutaneous Approaches*

**Charles Cha, MD, FACS**

Assistant Professor  
Departments of Gastrointestinal Surgery and Surgical Oncology  
Yale University School of Medicine  
New Haven, Connecticut  
*Liver Hyperplasia, Hypertrophy, and Atrophy*

**William C. Chapman, MD, FACS**

Professor and Chief  
Section of Transplantation  
Department of Surgery  
Washington University in St. Louis School of Medicine  
St. Louis, Missouri  
*Orthotopic Liver Transplantation*

**Jin Wook Chung, MD, PhD**

Professor of Radiology  
Seoul National University College of Medicine  
Seoul National University Hospital  
Seoul, Korea  
*Embolization of Liver Tumors*

**Dania Cioni, MD**

Assistant Professor of Radiology  
Department of Oncology, Transplants, and Advanced  
Technologies in Medicine  
Pisa University School of Medicine  
Pisa, Italy  
*Ablation of Liver Tumors: Percutaneous Methods for Ablation  
of Hepatic Neoplasms*

**Kevin C. Conlon, MD**

Professor of Surgery and Head, Department of Surgery  
Trinity College School of Medicine  
National Children's Hospital Tallaght,  
Dublin, Ireland  
*Intraoperative Diagnosis of Liver, Biliary, and Pancreatic Disease*

**Mauro M. Correia, MD**

Professor of Surgery  
University of Rio Grand School of Medicine  
Consultant Surgeon  
National Institute of Cancer Praça da Cruz Vermelha  
Rio de Janeiro, Brazil  
*Radiotherapy of Liver Tumors: Selective Internal Radiation  
Therapy for Liver Tumors*

**Carlos U. Corvera, MD**

Assistant Professor  
Department of Surgery, Division of General Surgery  
University of California, San Francisco, School of Medicine  
Staff Surgeon  
Division of General Surgery  
San Francisco VA Medical Center  
San Francisco, California  
*Biliary Stricture and Fistula: Biliary Fistula*

**David O. Cosgrove, MA, MSc, FRCR, FRCP**

Emeritus Professor  
Imaging Sciences Department  
Imperial College School of Medicine  
Consultant Radiologist  
Hammersmith Hospital  
London, United Kingdom  
*Ultrasound of the Liver, Biliary Tract, and Pancreas*

**Anne M. Covey, MD**

Assistant Professor of Radiology  
Weill Medical College of Cornell University  
Assistant Professor of Radiology  
Memorial Sloan-Kettering Cancer Center  
New York, New York  
*Percutaneous Biopsy*

**Michael D'Angelica, MD**

Associate Professor of Surgery  
Weill Medical College of Cornell University  
Assistant Attending Surgeon  
Memorial Sloan-Kettering Cancer Center  
New York, New York  
*Biliary-Enteric Anastomosis; Tumors of the Gallbladder; Intrahepatic and Extrahepatic Biliary Cancer; Ablation of Liver Tumors: Cryotherapy for Liver Tumors; Intra-arterial Chemotherapy for Liver Tumors; Liver Resection for Benign Disease and for Liver and Biliary Tumors (Addendum: Laparoscopic Techniques)*

**Michael Darcy, MD**

Professor of Radiology and Surgery  
Division of Diagnostic Radiology  
Chief, Interventional Radiology Section  
Washington University in St. Louis School of Medicine  
St. Louis, Missouri

**Brian D. Davison, MD, MS**

Instructor in Radiology  
Harvard Medical School  
Chief  
Division of Vascular and Interventional Radiology  
Children's Hospital Boston  
Boston, Massachusetts  
*Radiologic Hepatobiliary Interventions*

**Douglas R. DeCorato, MD**

Clinical Assistant Professor of Radiology  
Weill Medical College of Cornell University  
Radiologist  
New York Hospital-Cornell Medical Center  
New York, New York  
*Magnetic Resonance Imaging of the Liver, Biliary Tract, and Pancreas*

**Ronald P. DeMatteo, MD, FACS**

Associate Professor of Surgery  
Weill Medical College of Cornell University  
Vice Chair  
Department of Surgery  
Associate Attending Surgeon  
Hepatobiliary Service  
Memorial Sloan-Kettering Cancer Center  
New York, New York  
*Liver Immunology; Metastatic Tumors: Noncolorectal Non-neuroendocrine Metastases; Segment-Oriented Anatomic Liver Resections*

**Demetrios Demetriades, MD, PhD, FACS**

Professor of Surgery  
Keck School of Medicine of USC  
Director of Trauma and Surgical Critical Care  
Los Angeles County-USC Medical Center  
Los Angeles, California  
*Liver, Biliary, and Pancreatic Injury: Liver and Bile Duct Injury; Liver, Biliary, and Pancreatic Injury: Pancreatic Injury*

**Achilles A. Demetriou, MD, PhD**

Executive Vice President and Chief Operating Officer  
University Hospitals Health System  
Cleveland, Ohio  
*Support of the Failing Liver*

**Niraj M. Desai, MD**

Assistant Professor of Surgery  
Washington University in St. Louis  
School of Medicine  
Director  
Pancreas Transplant Program  
Barnes-Jewish Hospital  
St. Louis, Missouri  
*Whole Organ Pancreas and Pancreatic Islet Transplantation*

**Kiran K. Dhanireddy, MD**

Senior Resident  
Department of Surgery  
Georgetown University Hospital  
Washington, DC  
Research Fellow, Transplantation Branch  
National Institute of Diabetes and Digestive and Kidney Diseases  
National Institutes of Health  
Bethesda, Maryland  
*Liver and Pancreatic Transplantation Immunobiology*

**Thomas Diamond, MD, FRCS**

Consultant in Hepatobiliary and Pancreatic Surgery  
Mater Hospital  
The Queen's University of Belfast  
Belfast, Northern Ireland  
*Aneurysm and Arteriovenous Fistula of the Liver and Pancreatic Vasculature*

**Fabio F. Di Mola, MD**

Department of Surgery  
University of Heidelberg School of Medicine  
Heidelberg, Germany  
Specialist in General Surgery  
Department of Abdominal Surgery  
IRCCS Casa Sollievo Della Sofferenza  
Foggia, Italy  
*Management of Chronic Pancreatitis: Conservative, Endoscopic,  
and Surgical*

**Pierluigi Di Sebastiano, MD**

Privat-Docent of Surgery  
University of Heidelberg School of Medicine  
Heidelberg, Germany  
Head  
Department of Visceral Surgery  
IRCCS Casa Sollievo della Sofferenza  
Foggia, Italy  
*Management of Chronic Pancreatitis: Conservative, Endoscopic,  
and Surgical*

**Majella Doyle, MD**

Clinical Fellow  
Department of Surgery–Transplant Surgery,  
Washington University in St. Louis School of Medicine,  
St. Louis, Missouri  
*Intraoperative Diagnosis of Liver, Biliary, and Pancreatic Disease*

**Robert J. Eckersley, PhD**

Research Associate  
Imaging Sciences Department  
Imperial College School of Medicine  
Hammersmith Hospital  
London, United Kingdom  
*Ultrasound of the Liver, Biliary Tract, and Pancreas*

**N. Joseph Espat, MD, MS**

Associate Professor  
Department of Surgery–Hepatobiliary Surgery  
University of Illinois at Chicago Medical Center  
Chicago, Illinois  
*Bile Secretion*

**Sheung-Tat Fan, MS, MD, PhD**

Chair Professor  
The University of Hong Kong  
Chair Professor  
Queen Mary Hospital  
Hong Kong, China  
*Recurrent Pyogenic Cholangitis; Liver Resection in  
Cirrhosis of the Liver*

**Olivier Farges, PhD, MD**

Professor of Surgery  
Faculty of Medicine  
University of Paris VII  
Department of Surgery  
Hospital Beaujon  
Paris, France  
*Nonparasitic Cystic Diseases of the Liver and Intrahepatic  
Biliary Tree*

**Carlos Fernández-Del Castillo, MD**

Associate Professor of Surgery  
Harvard Medical School  
Visiting Surgeon  
Massachusetts General Hospital  
Boston, Massachusetts  
*Periampullary and Pancreatic Tumors: Cystic Neoplasms  
of the Pancreas*

**Mary Fischer, MD**

Associate Professor of Clinical Anesthesiology  
Weill Medical College of Cornell University  
Clinical Member  
Memorial Sloan-Kettering Cancer Center  
Attending Anesthesiologist  
Memorial Hospital for Cancer and Allied Diseases  
New York, New York  
*Anesthesia and Postoperative Intensive Care*

**Yuman Fong, MD**

Professor of Surgery  
Weill Medical College of Cornell University  
Chief  
Gastric and Mixed Tumor Service  
Murray F. Brennan Chair in Surgery  
Memorial Sloan-Kettering Cancer Center  
New York, New York  
*Preoperative and Postoperative Nutrition in Hepatobiliary  
Surgery; Metastatic Tumors: Surgical Treatment of Hepatic  
Metastases from Colorectal Cancer*

**Helmut Friess, MD**

Professor of Surgery and Vice-Chairman  
Department of Visceral Surgery  
University of Heidelberg School of Medicine  
Heidelberg, Germany  
*Management of Chronic Pancreatitis: Conservative, Endoscopic,  
and Surgical; Pancreaticoduodenectomy, Distal Pancreatectomy,  
Segmental Pancreatectomy, Total Pancreatectomy, and  
Transduodenal Resection of the Papilla of Vater*

**Josep Fuster**

Associate Professor  
University of Barcelona School of Medicine  
Senior Consultant and Professor of Surgery  
Barcelona Clinic Liver Cancer Group  
Liver Unit  
Hospital Clinic  
Barcelona, Spain  
*Liver Transplantation for Tumors*

**Nisha Garg, PhD**

Associate Professor  
Department of Microbiology and Immunology  
University of Texas Medical Branch  
Galveston, Texas  
*Amebiasis and Other Parasitic Infections*

**Hans Gerdes, MD**

Professor of Clinical Medicine  
Weill Medical College of Cornell University  
Attending Physician and Director  
GI Endoscopy Unit  
Memorial Hospital for Cancer and Allied Diseases  
New York, New York  
*Endoscopic Ultrasound: Endoscopic Ultrasound of the Pancreas*

**Philippe Gertsch, MD, FRCS, ICSHK, IHKAM(Surg)**

Professor of Surgery and Chief  
Department of Surgery  
Oncology Institute of Southern Switzerland  
Bellinzona, Switzerland  
*The Technique of Cholecystectomy*

**George Getradjman, MD**

Associate Professor of Clinical Radiology  
Weill Medical College of Cornell University  
Clinical Director  
Interventional Radiology Section  
Department of Radiology  
Memorial Sloan-Kettering Cancer Center  
New York, New York  
*Direct Cholangiography*

**George K. Gittes, MD**

Benjamin R. Fisher Chair of Pediatric Surgery  
and Surgeon-in-Chief  
Children's Hospital of Pittsburgh  
Pittsburgh, Pennsylvania  
*Biliary Atresia*

**Sean C. Glasgow, MD**

Resident  
Department of Surgery  
Washington University in St. Louis School of Medicine  
Barnes-Jewish Hospital  
St. Louis, Missouri  
*Orthotopic Liver Transplantation*

**Gabriel E. Gondolesi, MD**

Adjunct Associate Director  
Liver Unit  
Chief  
Nutrition Rehabilitation  
Favaloro Foundation  
Buenos Aires, Argentina  
*Living Donor Liver Transplantation*

**John Goulis, MD**

Lecturer in Medicine  
Thessaloniki University  
Faculty of Medicine  
Thessaloniki, Greece  
*Medical Management of Bleeding Varices*

**Dirk J. Gouma, MD**

Professor of Surgery  
Academic Medical Center  
University of Amsterdam  
Amsterdam, The Netherlands  
*Palliation of Pancreatic and Periampullary Tumors*

**Neil A. Halpern, MD, FACP, FCCP, FCCM**

Professor of Clinical Medicine and Professor of Medicine in  
Clinical Anesthesiology  
Weill Medical College of Cornell University  
Chief of Critical Care Medicine Service  
Attending Critical Care Medicine Physician and Medical  
Director, Respiratory Therapy  
Department of Anesthesiology and Critical Care Medicine  
Memorial Sloan-Kettering Cancer Center  
New York, New York  
*Perioperative Critical Care in Hepatobiliary Surgery*

**Lucy E. Hann, MD**

Associate Professor of Radiology  
Weill Medical College of Cornell University  
Associate Attending Radiologist  
Memorial Sloan-Kettering Cancer Center  
New York, New York  
*Surgical and Radiologic Anatomy of the Liver, Biliary Tract, and Pancreas*

**Werner Hartwig, MD**

Department of General and Visceral Surgery  
Ruprecht-Karls University  
University of Heidelberg  
Heidelberg, Germany  
*Management of Acute Pancreatitis and Complications*

**Nancy Heffernan, RN, BSN**

Clinical Research Nurse  
Hepatobiliary Service  
Chief of General Surgery  
Memorial Sloan-Kettering Cancer Center  
New York, New York  
*Quality of Life and Hepatobiliary Tumors*

**William Scott Helton, MD**

University of Illinois at Chicago Medical Center  
Chicago, Illinois  
*Preoperative and Postoperative Nutrition in Hepatobiliary Surgery*

**Alan W. Hemming, MD, MSc**

Professor of Surgery  
University of Florida College of Medicine  
Director of Hepatobiliary Surgery  
Shands Hospital at the University of Florida  
Gainesville, Florida  
*Ex Vivo and In Situ Hypothermic Hepatic Resection*

**J. Michael Henderson, MD, FRCS**

Professor of Surgery  
Cleveland Clinic Lerner College of Medicine  
Vice-Chairman  
Division of Surgery  
Cleveland Clinic Foundation  
Cleveland, Ohio

*The Place of Transjugular Intrahepatic Portosystemic Shunting;  
Distal Splenorenal Shunt*

**Choon-Kiat Ho, MD**

Consultant Surgeon  
Department of General Surgery  
Tan Tock Seng Hospital  
Singapore

*Pancreaticoduodenectomy, Distal Pancreatectomy, Segmental  
Pancreatectomy, Total Pancreatectomy, and Transduodenal  
Resection of the Papilla of Vater*

**Philippe Ichai, MD**

Paul Brousse Hospital  
Villejuif, France

*Liver Transplantation in Patients with Fulminant Hepatitis*

**Hiroshi Imamura, MD, PhD**

Lecturer  
Division of Hepato-Pancreatic-Biliary Surgery  
Department of Surgery  
Tokyo University Graduate School of Medicine  
Tokyo, Japan

*Portal Vein Embolization: Place of Portal Vein Embolization*

**C. W. Imrie, BSc, MBChB, FRCS**

Professor of Upper Gastrointestinal Surgery and Consultant  
Surgeon

Lister Department of Surgery  
University of Glasgow  
Consultant Surgeon

Royal Infirmary  
Glasgow, United Kingdom

*Etiology, Pathogenesis, and Diagnostic Assessment of Acute  
Pancreatitis*

**James Jackson, MBBS, MRCP, FRCR**

Honorary Senior Lecturer  
Imperial College School of Medicine  
Consultant Radiologist  
Hammersmith Hospital  
London, United Kingdom

*Angiography*

**Piotr K. Janicki, MD, PhD**

Professor of Anesthesiology  
Vice-Chair of Research  
Department of Anesthesiology  
Penn State College of Medicine  
Director of Solid Organ Transplantation Anesthesia  
Milton S. Hershey Medical Center  
Hershey, Pennsylvania

*Liver Transplantation: Anesthesia, Perioperative Management,  
and Postoperative Intensive Care*

**William R. Jarnagin, MD, FACS**

Associate Professor of Surgery  
Weill Medical College of Cornell University  
Assistant Attending Surgeon  
Memorial Sloan-Kettering Cancer Center  
New York, New York

*Intraoperative Diagnosis of Liver, Biliary, and Pancreatic Disease;  
Biliary-Enteric Anastomosis; Biliary Stricture and Fistula:  
Benign Biliary Strictures; Biliary Stricture and Fistula: Biliary  
Fistula; Benign Tumors and Pseudotumors of the Biliary Tract;  
Tumors of the Gallbladder; Intrahepatic and Extrahepatic  
Biliary Cancer*

**Roger L. Jenkins, MD**

Professor of Surgery  
Tufts Medical School  
Boston

Chief of Surgery  
Division of Hepatobiliary Surgery and Liver Transplantation  
Lahey Clinic Medical Center  
Burlington, Massachusetts

*Early and Late Complications of Liver Transplantation*

**Stefan Kahl, MD**

Associate Professor  
Department of Gastroenterology  
Otto Von Guericke Medical School  
University of Magdeburg  
Magdeburg, Germany

*Etiology, Pathogenesis, and Diagnosis of Chronic Pancreatitis*

**Junichi Kamiya, MD**

Chief  
General Surgery  
Aichiken Koseiren Kamo Hospital  
Toyota, Japan

*Intrahepatic Stones*

**Cuneyt Kayaalp, MD**

Associate Professor of Surgery  
Gastrointestinal Surgery Department  
Turkey Yuksek Ihtisas Hospital  
Ankara, Turkey

*Hydatid Cyst of the Liver*

**Colleen R. Kelly, MD**

Fellow in Gastroenterology  
Brown Medical School and Rhode Island Hospital  
Providence, Rhode Island

*Molecular Biology of Liver Carcinogenesis and Hepatitis*

**Nancy E. Kemeny, MD**

Professor of Medicine  
Weill Medical College of Cornell University  
Attending Physician  
Solid Tumor-GI Division  
Memorial Sloan-Kettering Cancer Center  
New York, New York

*Intra-arterial Chemotherapy for Liver Tumors*

**Allan D. Kirk, MD, PhD**

Associate Professor of Surgery  
 Uniformed Services, University of Health Sciences  
 F. Edward Hébert School of Medicine  
 Senior Investigator and Chief  
 Transplantation Branch  
 National Institute of Diabetes and Digestive and Kidney  
 Diseases  
 National Institutes of Health  
 Bethesda, Maryland  
*Liver and Pancreatic Transplantation Immunobiology*

**Yuichi Kitagawa, MD**

Staff Specialist for Surgery  
 National Center for Geriatrics and Gerontology  
 Obu, Japan  
*Intrahepatic Stones*

**Jörg Kleeff, MD**

Consultant Surgeon  
 Department of Surgery  
 University of Heidelberg School of Medicine  
 Heidelberg, Germany  
*Pancreaticoduodenectomy, Distal Pancreatectomy, Segmental  
 Pancreatectomy, Total Pancreatectomy, and Transduodenal  
 Resection of the Papilla of Vater*

**David S. Klimstra, MD**

Professor of Pathology and Laboratory Medicine  
 Weill Medical College of Cornell University  
 Attending Pathologist and Chief  
 Surgical Pathology  
 Memorial Sloan-Kettering Cancer Center  
 New York, New York  
*Tumors of the Bile Ducts—Pathologic Aspects; Pathology  
 and Classification of Pancreatic and Ampullary Tumors*

**Stuart J. Knechtle, MD**

Professor of Surgery and Ray D. Owen Professor of  
 Transplantation  
 University of Wisconsin School of Medicine and Public Health  
 Madison, Wisconsin  
*The Place of Portosystemic Shunting*

**Hiroyuki Kobayashi, MD, PhD**

Associate Professor  
 Department of Pediatric Surgery  
 Juntendo University School of Medicine  
 Tokyo, Japan  
*Biliary Atresia*

**Anil Kotru, MD, MS, MRCS(UK), FRCS(UK)**

Fellow  
 Department of Organ Transplantation  
 Washington University in St. Louis School of Medicine  
 St. Louis, Missouri  
*Orthotopic Liver Transplantation; Liver Transplantation in  
 Children and Segmental Transplantation*

**Jake E. J. Krige, MBChB, FACS, FCS(SA),  
FRCS(Ed)**

Associate Professor of Surgery  
 University of Cape Town Health Sciences Faculty  
 Head and Principal Surgeon HPB Surgery Unit  
 Groote Schuur Hospital  
 Cape Town, South Africa  
*Endoscopic Therapy in the Management of Esophageal Varices:  
 Injection Sclerotherapy and Variceal Ligation*

**Yonson Ku, MD, PhD**

Professor and Chairman  
 Department of Liver Surgery and Transplantation  
 Kobe University Graduate School of Medical Sciences  
 Kobe, Japan  
*Isolated Hepatic Perfusion for Extensive Liver Cancers*

**Robert C. Kurtz, MD**

Professor of Clinical Medicine  
 Weill Medical College of Cornell University  
 Chief  
 Gastroenterology and Nutrition Service  
 Department of Medicine  
 Memorial Sloan-Kettering Cancer Center  
 New York, New York  
*Direct Cholangiography*

**Douglas R. LaBrecque**

Professor of Internal Medicine  
 University of Iowa Roy J. and Lucille A. Carver College  
 of Medicine  
 Attending Surgeon  
 Department of Internal Medicine  
 Director of Liver Service  
 Division of Gastroenterology/Hepatology  
 University of Iowa Hospital and Clinics  
 Iowa City, Iowa  
*Management of Ascites in Cirrhosis and Portal Hypertension*

**Hauke Lang, MD**

Professor of Surgery  
 University of Essen Medical School  
 Clinic for General, Gastrointestinal, and Transplantation  
 Surgery  
 University of Essen Medical Center  
 Essen, Germany  
*Liver Resection for Benign Disease and for Liver and Biliary  
 Tumors (Computer-Assisted Operation Planning and Virtual  
 Liver Resection)*

**Michael P. La Quaglia, MD**

Professor of Surgery  
 Weill Medical College of Cornell University  
 Chief, Pediatric Surgery  
 Memorial Sloan-Kettering Cancer Center  
 New York, New York  
*Hepatic Tumors in Childhood*



**Nicholas F. LaRusso, MD**

Professor of Medicine and Professor of Biochemistry  
and Molecular Biology  
Mayo Clinic College of Medicine  
Distinguished Investigator  
Mayo Foundation  
Rochester, Minnesota  
*Primary Sclerosing Cholangitis*

**K. N. Lazaridis, MD**

Assistant Professor of Medicine  
Mayo Clinic College of Medicine  
Rochester, Minnesota  
*Primary Sclerosing Cholangitis*

**L. S. Lee, MD**

Instructor in Medicine  
Harvard Medical School  
Associate Physician and Director, Women's GI Health  
Brigham and Women's Hospital  
Boston, Massachusetts  
*Stones in the Bile Duct: Endoscopic and Percutaneous Approaches*

**Riccardo Lencioni, MD**

Associate Professor of Radiology  
Department of Oncology, Transplants, and Advanced  
Technologies in Medicine  
Pisa University School of Medicine  
Pisa, Italy  
*Ablation of Liver Tumors: Percutaneous Methods for Ablation  
of Hepatic Neoplasms*

**Kui Hin Liau, MBBS, MMed(Surg), FRCS(Edin),  
FICS, FAMS(Surg), IHPBA, AHPBA**

Clinical Lecturer  
The National University of Singapore,  
Yong Loo Lin School of Medicine  
Consultant Surgeon and Chief of Hepatobiliary and Pancreatic  
Surgery  
Department of Surgery, Digestive Disease Centre  
Tan Tock Seng Medical Centre and Hospital  
Singapore  
*Segment-Oriented Anatomic Liver Resections*

**Charles J. Lightdale, MD**

Professor of Clinical Medicine  
Division of Digestive and Liver Diseases  
Columbia University College of Physicians and Surgeons  
Attending Physician  
Department of Medicine New York–Presbyterian  
Hospital/Columbia University Medical Center  
New York, New York  
*Endoscopic Ultrasound: Endoscopic Ultrasound of the Biliary Tract*

**Keith D. Lillemoe, MD, FACS**

Professor of Surgery  
Indiana University School of Medicine  
Attending Physician  
University Hospital  
Indianapolis, Indiana  
*Infections in Hepatic, Biliary, and Pancreatic Surgery*

**James Lin, MD**

Resident  
General Surgery  
Mount Sinai Medical Center  
New York, New York  
*Endocrine Tumors of the Pancreas: Clinical Picture, Diagnosis,  
and Therapy*

**David C. Linehan, MD**

Associate Professor of Surgery  
Washington University in St. Louis School of Medicine  
Attending Surgeon  
Barnes-Jewish Hospital  
St. Louis, Missouri  
*Benign Tumors and Pseudotumors of the Biliary Tract*

**Pamela A. Lipsett, MD**

Program Director, General Surgery  
Professor of Surgery, Anesthesia, Critical Care and Nursing  
Johns Hopkins University School of Medicine  
Co-Director, Surgical Intensive Care Units  
Johns Hopkins Hospital  
Baltimore, Maryland  
*Cholangitis*

**Josep M. Llovet, MD**

Associate Professor  
Mount Sinai School of Medicine  
New York, New York  
ICREA Senior Researcher  
Barcelona Clinic Liver Cancer Group  
Liver Unit  
Hospital Clinic  
Barcelona, Spain  
*Hepatocellular Carcinoma*

**Jeffrey A. Lowell, MD**

Professor of Surgery and Pediatrics  
Washington University in St. Louis School of Medicine  
Chief  
Pediatric Transplant Surgery  
St. Louis Children's Hospital  
Associate Director, Transplant Surgery  
Barnes-Jewish Hospital  
St. Louis, Missouri  
*Liver Transplantation in Children and Segmental  
Transplantation*

**David C. Madoff, MD**

Assistant Professor  
Department of Diagnostic Imaging  
Section of Interventional Radiology  
The University of Texas M.D. Anderson Cancer  
Houston, Texas  
*Portal Vein Embolization: Preoperative Portal Vein  
Embolization—A Western Perspective*

**Anirban Maitra, MBBS**

Associate Professor of Pathology and Oncology  
The Sol Goldman Pancreatic Cancer Research Center  
Johns Hopkins University School of Medicine  
Pathologist  
Johns Hopkins Hospital  
Baltimore, Maryland  
*Genetics and Molecular Biology of Pancreatic and Biliary Cancers*

**Ali W. Majeed, MD, FRCS**

Honorary Professor of Surgery,  
Sheffield Hallam University  
Consultant Surgeon  
Royal Hallamshire Hospital  
Sheffield, United Kingdom  
*Clinical Investigation of Hepatopancreatobiliary Disease; Cholecystolithiasis and Stones in the Common Bile Duct: Which Approach, When?*

**Masatoshi Makuuchi, MD, PhD**

Professor and Chairman  
Department of Surgery  
Hepato-Biliary-Pancreatic Surgery Division and Artificial Organ and Transplantation Division  
University of Tokyo Graduate School of Medicine  
Tokyo, Japan  
*Portal Vein Embolization: Place of Portal Vein Embolization*

**Peter Malfertheiner, MD**

Professor of Medicine and Director  
Department of Gastroenterology, Hepatology, and Infectious Diseases  
Otto von Guericke Medical School  
University of Magdeburg  
Magdeburg, Germany  
*Etiology, Pathogenesis, and Diagnosis of Chronic Pancreatitis*

**Amadeo Marcos, MD**

Professor of Surgery  
University of Pittsburgh  
Pittsburgh  
Chief  
Division of Transplant Surgery  
University of Pittsburgh Medical Center  
Pittsburgh, Pennsylvania  
*Techniques of Liver Replacement*

**James F. Markmann, MD, PhD**

Associate Professor of Surgery  
University of Pennsylvania School of Medicine  
Director  
Pancreas Transplant Program  
Hospital of the University of Pennsylvania  
Philadelphia, Pennsylvania  
*Whole Organ Pancreas and Pancreatic Islet Transplantation*

**Robert T. Mathie, BSc, PhD**

Senior Lecturer in Surgical Physiology  
Division of Surgery, Anaesthetics, and Intensive Care  
Imperial College School of Medicine  
Hammersmith Hospital  
London, United Kingdom  
*Liver Blood Flow: Physiology, Measurement, and Clinical Relevance*

**Priscilla F. McAuliffe, MD, PhD**

Resident  
General Surgery  
University of Florida College of Medicine  
Shands Hospital  
Gainesville, Florida  
*Endotoxin and Cytokines in Liver and Biliary Tract Disease*

**Colin J. McKay, MD, FRCS**

Senior Lecturer and Consultant Surgeon  
Lister Department of Surgery  
Royal Infirmary  
Glasgow, United Kingdom  
*Etiology, Pathogenesis, and Diagnostic Assessment of Acute Pancreatitis*

**Jose A. Melendez, MD**

Associate Chair of Anesthesiology and Associate Professor of Anesthesiology  
University of Colorado School of Medicine  
Senior Medical Director of Perioperative Services  
University of Colorado Hospital  
Denver, Colorado  
*Anesthesia and Postoperative Intensive Care*

**Lyle L. Moldawer, PhD**

Professor and Vice Chairman for Research  
Department of Surgery  
University of Florida College of Medicine  
Gainesville, Florida  
*Endotoxin and Cytokines in Liver and Biliary Tract Disease*

**Damian J. Mole, BMedSc, MBChB, MRCS**

Research Fellow and Specialist Registrar in General Surgery  
Department of Surgery  
The Queen's University of Belfast  
Belfast, Northern Ireland  
*Aneurysm and Arteriovenous Fistula of the Liver and Pancreatic Vasculature*

**Klaus Mönkemüller, MD**

Associate Professor  
Otto von Guericke Medical School  
University of Magdeburg  
Director, Molecular Endoscopy  
Magdeburg University Hospital  
Magdeburg, Germany  
*Etiology, Pathogenesis, and Diagnosis of Chronic Pancreatitis*



**Masato Nagino, MD**

Associate Professor  
Division of Surgical Oncology, Department of Surgery  
Nagoya University Graduate School of Medicine  
Nagoya, Japan

*Intrahepatic and Extrahepatic Biliary Cancer (Perihilar  
Cholangiocarcinoma with Emphasis on Presurgical  
Management)*

**Alexander Nagle, MD**

Associate Professor of Surgery  
Division of Gastrointestinal/Endocrine Surgery  
Northwestern University Feinberg School of Medicine  
Chicago, Illinois

*Laparoscopic Cholecystectomy and Choledocholithotomy*

**David M. Nagorney, MD**

Professor of Surgery  
Mayo Clinic and College of Medicine  
Rochester, Minnesota

*Bile Duct Cysts in Adults; Surgical Management of Cystic Disease  
of the Liver; Metastatic Tumors: Hepatic Metastases from  
Primary Neuroendocrine Tumors*

**Eric K. Nakakura, MD, PhD**

Assistant Professor of Surgery  
University of California, San Francisco, School of Medicine  
Staff Surgeon

UCSF Comprehensive Cancer Center  
San Francisco, California

*Periampullary and Pancreatic Tumors: Periampullary and  
Pancreatic Cancer*

**Attila Nakeeb, MD**

Associate Professor of Surgery  
Indiana University School of Medicine  
Attending Surgeon

Indiana University Hospital  
Indianapolis, Indiana

*Biliary Tract Pathophysiology: Pathophysiology of  
Biliary Tract Obstruction*

**James Neuberger, DM, FRCP**

Honorary Professor of Medicine  
University of Birmingham School of Medicine  
Consultant Physician, Liver Unit

Queen Elizabeth Hospital  
Birmingham, United Kingdom

*Liver Transplantation: Indications*

**Yuji Nimura, MD**

Professor and Chairman  
Division of Surgical Oncology, Department of Surgery  
Nagoya University Graduate School of Medicine  
Nagoya, Japan

*Intrahepatic Stones; Intrahepatic and Extrahepatic Biliary Cancer  
(Perihilar Cholangiocarcinoma with Emphasis on Presurgical  
Management); Liver Resection for Benign Disease and for Liver  
and Biliary Tumors (Extended Resection for Biliary Tumors—  
An Alternative Approach)*

**Quentin M. Nunes**

Surgical Registrar  
University Hospital  
Queens Medical Centre  
Nottingham, United Kingdom

*Postcholecystectomy Problems*

**John G. O'Grady, MD, FRCPI**

Consultant Hepatologist  
Institute of Liver Studies  
King's College Hospital  
London, United Kingdom

*Management of Liver Failure*

**Risteard O'Laoide, MD**

Department of Radiology  
St. Vincent's University Hospital  
Dublin, Ireland

*Radiologic Hepatobiliary Interventions*

**Kim M. Olthoff, MD**

Associate Professor of Surgery  
University of Pennsylvania School of Medicine  
Director

Liver Transplant Program  
Hospital of the University of Pennsylvania  
Philadelphia, Pennsylvania

*Liver Regeneration*

**Evan S. Ong, MD, MS**

Chief Surgical Resident  
University of Illinois at Chicago Medical Center  
Chicago, Illinois

*Bile Secretion*

**Marshall J. Orloff, MS, MD**

Distinguished Professor of Surgery  
University of California, San Diego, School of Medicine  
La Jolla

Staff Surgeon  
UCSD Medical Center  
San Diego, California

*Budd-Chiari Syndrome and Veno-occlusive Disease*

**Mark S. Orloff, MD**

Professor of Surgery  
University of Rochester School of Medicine  
Staff Physician

Division of Organ Transplantation  
University of Rochester Medical Center  
Rochester, New York

*Budd-Chiari Syndrome and Veno-occlusive Disease*

**Susan L. Orloff, MD**

Professor of Surgery and Molecular Microbiology and  
Immunology

Division of Liver and Pancreas Transplantation  
Oregon Health & Science University School of Medicine  
Portland, Oregon

*Budd-Chiari Syndrome and Veno-occlusive Disease*