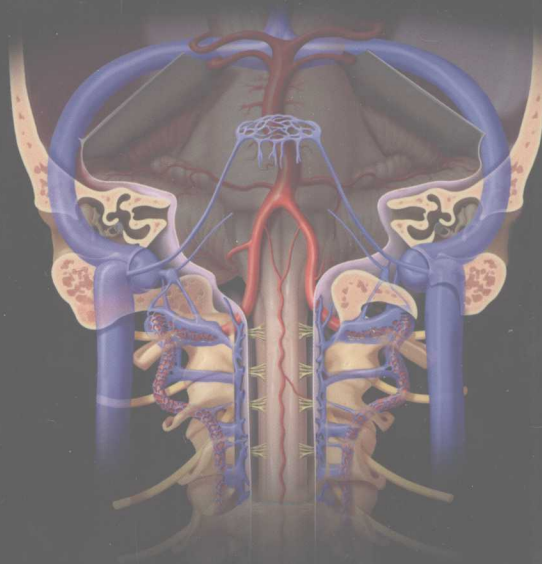
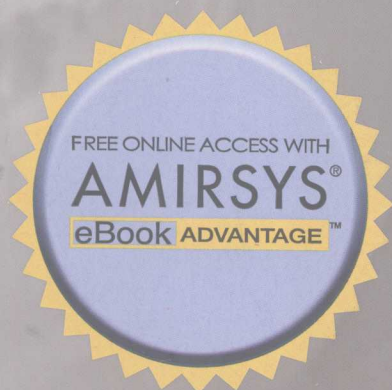


SPECIALTY IMAGING™

CRANIOVERTEBRAL JUNCTION



ROSS

**MOORE
SHAH
PETERSILGE**





SPECIALTY IMAGINGTM
CRANIOVERTEBRAL JUNCTION

Jeffrey S. Ross, MD

Neuroradiology
Barrow Neurological Institute
St. Joseph's Hospital
Phoenix, Arizona

Kevin R. Moore, MD

Pediatric Neuroradiology
Primary Children's Medical Center
University of Utah School of Medicine
Salt Lake City, Utah

Lubdha M. Shah, MD

Associate Professor of Radiology
Division of Neuroradiology
University of Utah School of Medicine
Salt Lake City, Utah

Cheryl Petersilge, MD

Clinical Professor of Radiology
Cleveland Clinic Lerner College of Medicine
Case Western Reserve University
Cleveland, Ohio



AMIRSYS®

Names you know. Content you trust.®

First Edition

© 2013 Amirsys, Inc.

Compilation © 2013 Amirsys Publishing, Inc.

All rights reserved. No part of this publication may be reproduced, stored in a retrieval system, or transmitted, in any form or media or by any means, electronic, mechanical, photocopying, recording, or otherwise, without prior written permission from Amirsys, Inc.

Printed in Canada by Friesens, Altona, Manitoba, Canada

ISBN: 978-1-931884-92-1

Notice and Disclaimer

The information in this product ("Product") is provided as a reference for use by licensed medical professionals and no others. It does not and should not be construed as any form of medical diagnosis or professional medical advice on any matter. Receipt or use of this Product, in whole or in part, does not constitute or create a doctor-patient, therapist-patient, or other healthcare professional relationship between Amirsys Inc. ("Amirsys") and any recipient. This Product may not reflect the most current medical developments, and Amirsys makes no claims, promises, or guarantees about accuracy, completeness, or adequacy of the information contained in or linked to the Product. The Product is not a substitute for or replacement of professional medical judgment. Amirsys and its affiliates, authors, contributors, partners, and sponsors disclaim all liability or responsibility for any injury and/or damage to persons or property in respect to actions taken or not taken based on any and all Product information.

In the cases where drugs or other chemicals are prescribed, readers are advised to check the Product information currently provided by the manufacturer of each drug to be administered to verify the recommended dose, the method and duration of administration, and contraindications. It is the responsibility of the treating physician relying on experience and knowledge of the patient to determine dosages and the best treatment for the patient.

To the maximum extent permitted by applicable law, Amirsys provides the Product AS IS AND WITH ALL FAULTS, AND HEREBY DISCLAIMS ALL WARRANTIES AND CONDITIONS, WHETHER EXPRESS, IMPLIED OR STATUTORY, INCLUDING BUT NOT LIMITED TO, ANY (IF ANY) IMPLIED WARRANTIES OR CONDITIONS OF MERCHANTABILITY, OF FITNESS FOR A PARTICULAR PURPOSE, OF LACK OF VIRUSES, OR ACCURACY OR COMPLETENESS OF RESPONSES, OR RESULTS, AND OF LACK OF NEGLIGENCE OR LACK OF WORKMANLIKE EFFORT. ALSO, THERE IS NO WARRANTY OR CONDITION OF TITLE, QUIET ENJOYMENT, QUIET POSSESSION, CORRESPONDENCE TO DESCRIPTION OR NON-INFRINGEMENT, WITH REGARD TO THE PRODUCT. THE ENTIRE RISK AS TO THE QUALITY OF OR ARISING OUT OF USE OR PERFORMANCE OF THE PRODUCT REMAINS WITH THE READER.

Amirsys disclaims all warranties of any kind if the Product was customized, repackaged or altered in any way by any third party.

Library of Congress Cataloging-in-Publication Data

Ross, Jeffrey S. (Jeffrey Stuart)

Specialty imaging. Craniovertebral junction / Jeffrey S. Ross. -- 1st ed.

p. ; cm.

Craniovertebral junction

Includes bibliographical references.

ISBN 978-1-931884-92-1

I. Title. II. Title: Craniovertebral junction.

[DNLM: 1. Atlanto-Axial Joint--radiography. 2. Atlanto-Occipital Joint--radiography. 3. Cervical Vertebrae--radiography. 4. Occipital Bone--radiography. 5. Spinal Diseases--radiography. WE 708]

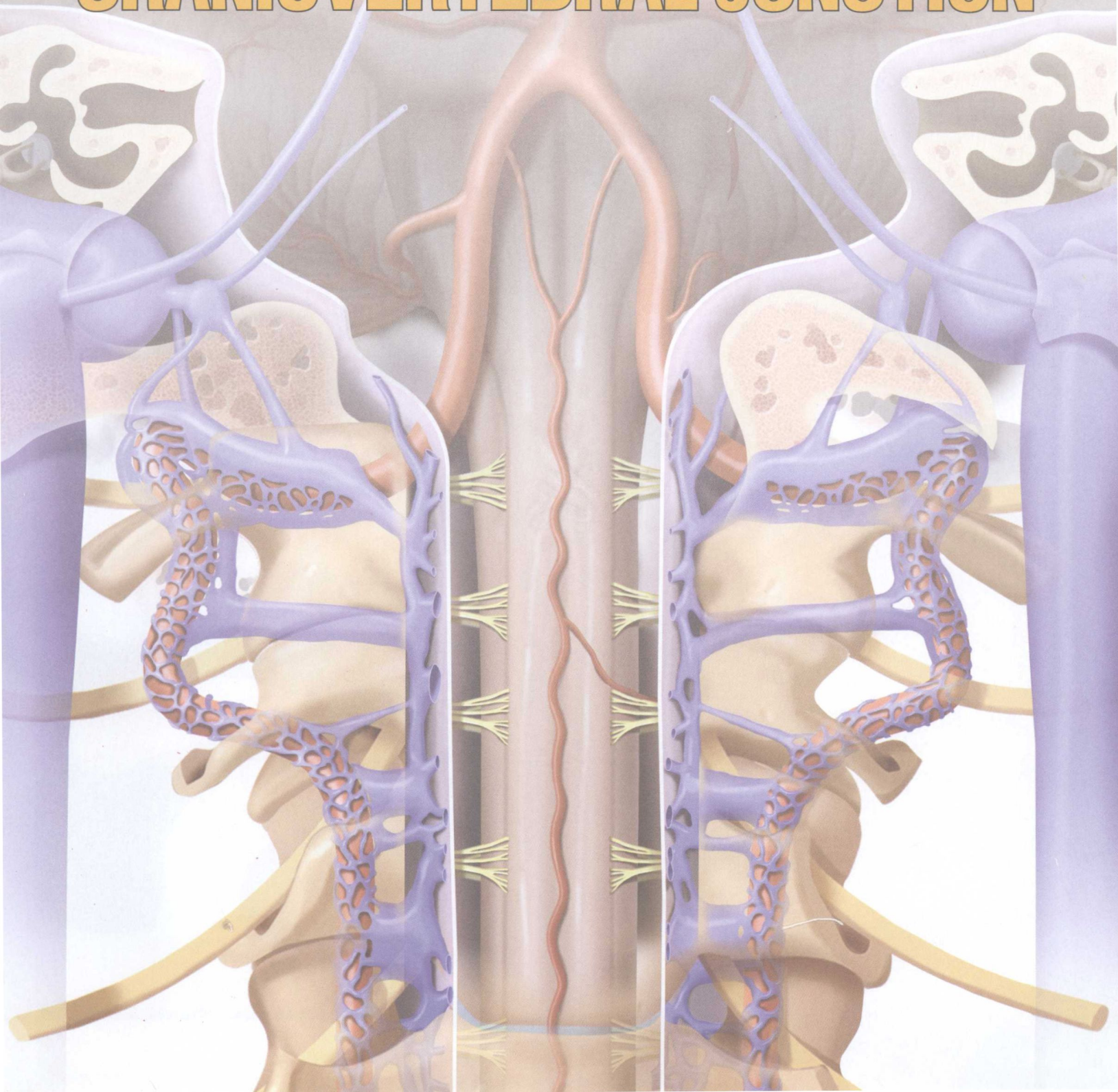
RC936

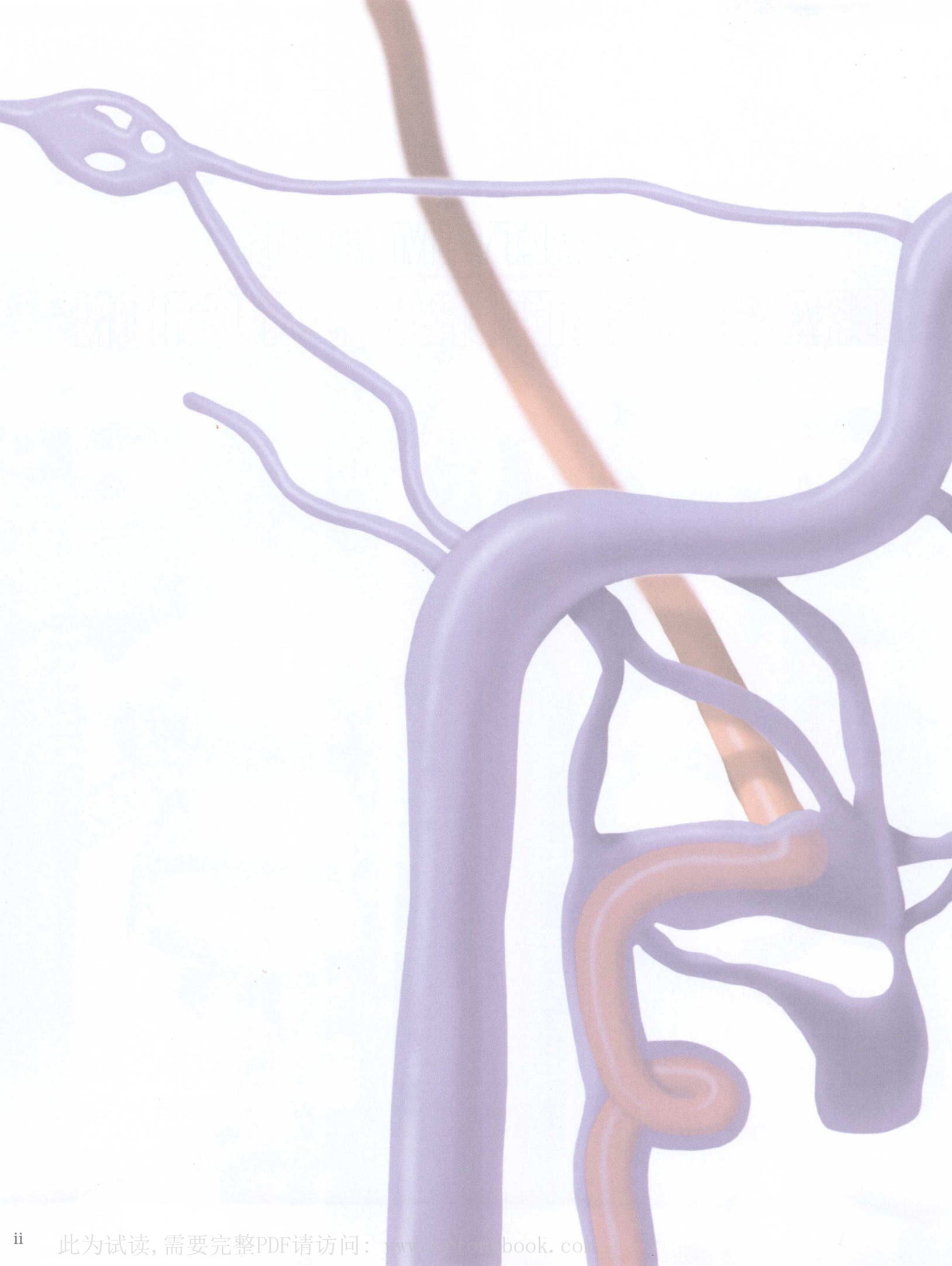
617.5'140754--dc23

2013003692

SPECIALTY IMAGING™

CRANIOVERTEBRAL JUNCTION

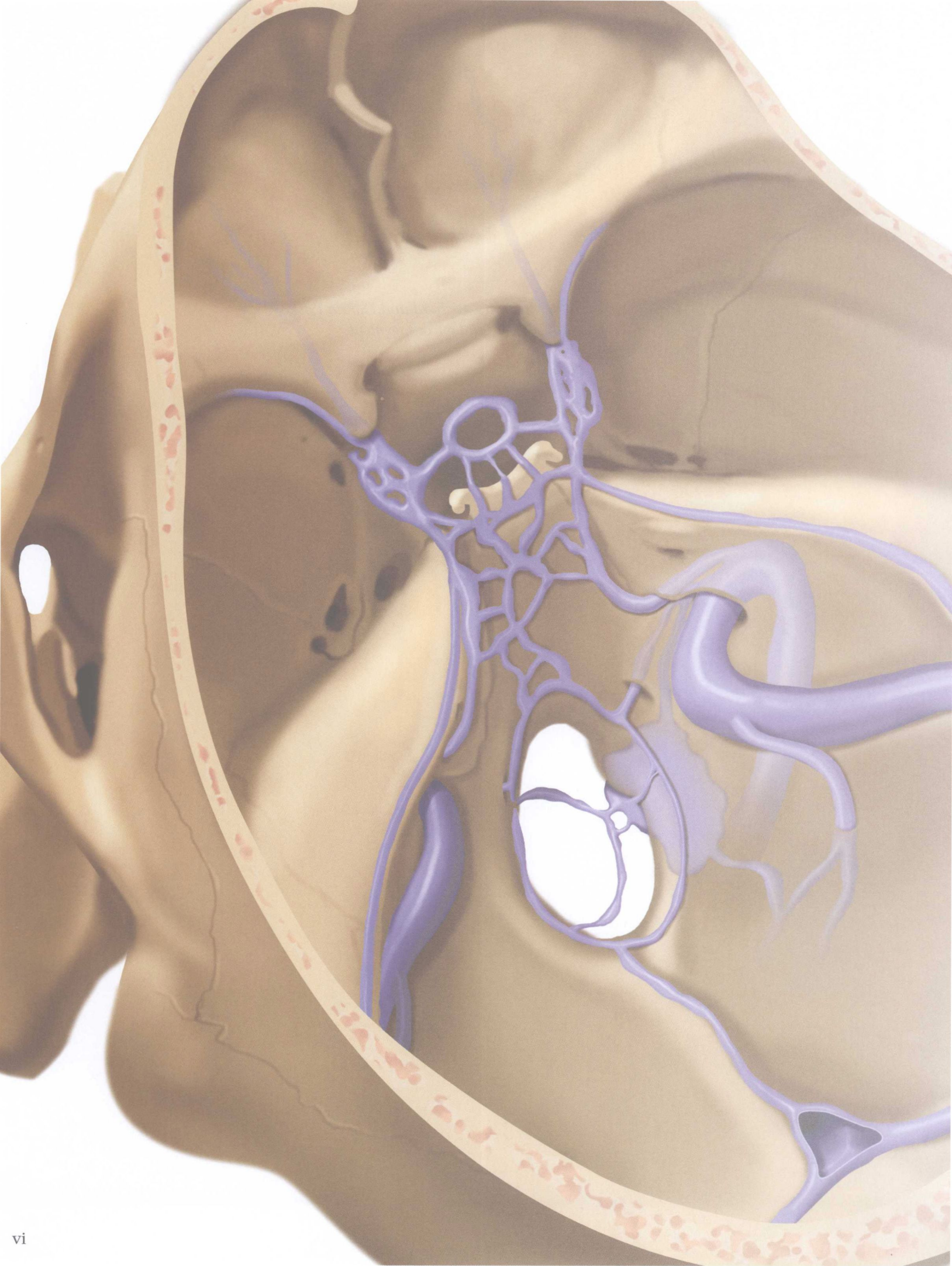




*To the memory of my parents, Richard and Donna Ross,
for their love, trust, and encouragement.*

*"For the Lord gives wisdom; from his mouth comes knowledge and understanding."
(Proverbs 2:6)*

JSR



CONTRIBUTORS

C. Douglas Phillips, MD, FACR

Professor of Radiology
Director of Head and Neck Imaging
Weill Cornell Medical College
NewYork-Presbyterian Hospital
New York, New York

Julia Crim, MD

Chief of Musculoskeletal Radiology
Professor of Radiology
University of Utah School of Medicine
Salt Lake City, Utah

Christine M. Glastonbury, MBBS

Professor of Radiology and Biomedical Imaging
Otolaryngology-Head and Neck Surgery
and Radiation Oncology
University of California, San Francisco
San Francisco, California

Karen L. Salzman, MD

Associate Professor of Radiology
Leslie W. Davis Endowed Chair in Neuroradiology
University of Utah School of Medicine
Salt Lake City, Utah

Bryson Borg, MD

Chief of Neuroradiology
David Grant Medical Center
Travis Air Force Base
Fairfield, California

Hank Baskin, MD

Pediatric Imaging Section Chief
Intermountain Healthcare
Clinical Director of Musculoskeletal Imaging
Primary Children's Medical Center
Adjunct Assistant Professor of Radiology
University of Utah School of Medicine
Salt Lake City, Utah

Anne G. Osborn, MD, FACR

University Distinguished Professor
Professor of Radiology
William H. and Patricia W. Child
Presidential Endowed Chair in Radiology
University of Utah School of Medicine
Salt Lake City, Utah

Susan I. Blaser, MD, FRCPC

Staff Neuroradiologist
The Hospital for Sick Children
Professor of Neuroradiology
University of Toronto
Ontario, Canada

Nancy J. Fischbein, MD

Professor of Radiology
Professor, by courtesy, of Neurology, Neurosurgery, and
Otolaryngology-Head and Neck Surgery
Stanford University Medical Center
Stanford, California



PREFACE

Like it or not, the craniovertebral (craniocervical) junction (CVJ) is imaged on every brain, neck, and cervical spine imaging study performed. This complex borderland region has its own unique nomenclature, embryology, anatomy, vasculature, biomechanics, and pathology. The surgical techniques used in this region are also distinctive and related to the underlying complex anatomy and pathology.

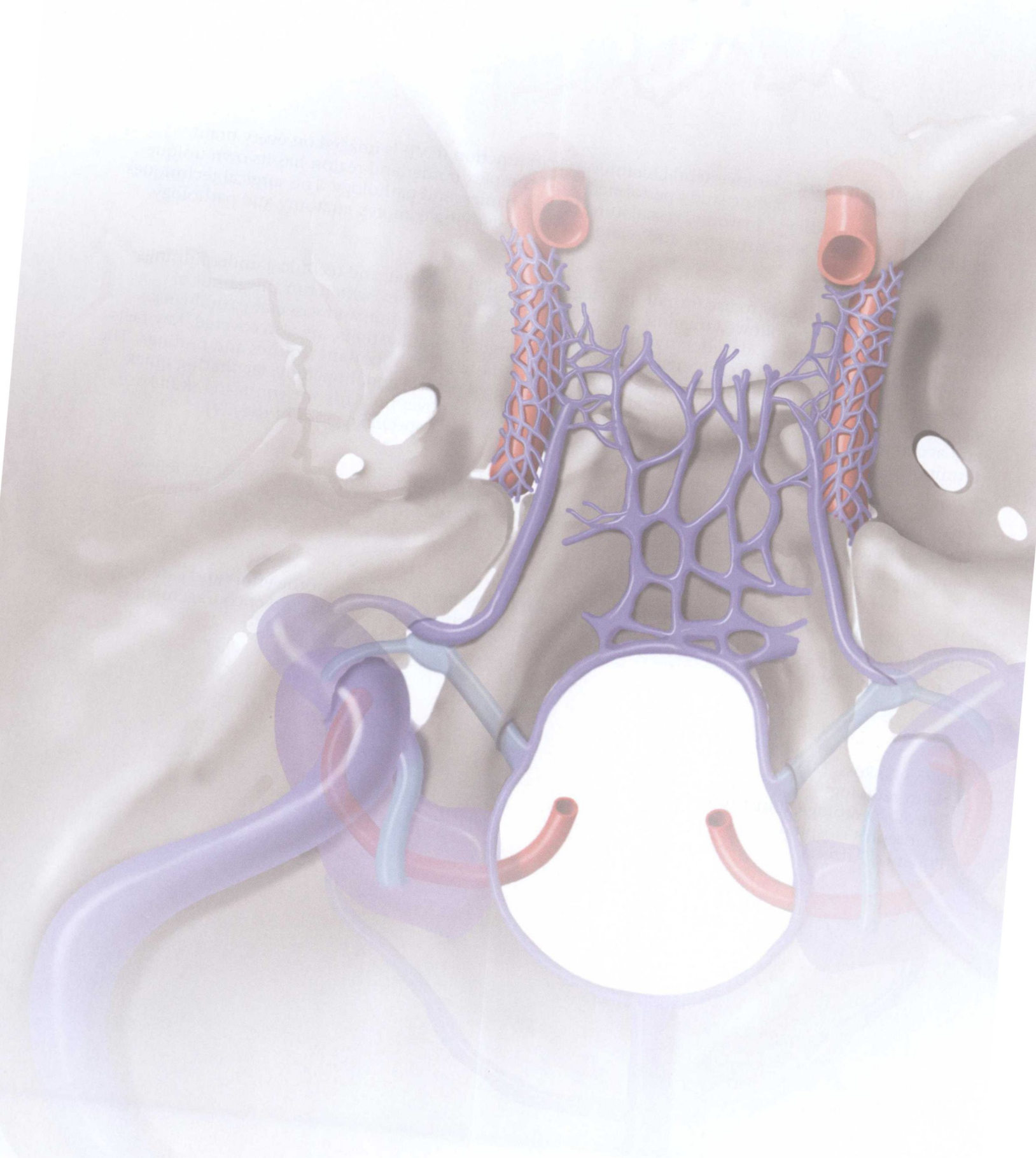
This text, in an easy to use format, provides the needed anatomic and technical underpinnings required for this region, followed by more detailed and specific diagnoses, which run the gamut of congenital, genetic, trauma, degenerative, infectious, inflammatory, tumor, and vascular pathologies. General surgical approaches to this area, with potential surgical complications, are also covered. Key facts boxes are included at the beginning of each chapter, which highlight important features and findings. The vast majority of text is in a bulleted format, allowing for rapid perusal and, hopefully, facilitating quick and accurate diagnoses. Finally, a series of differential diagnoses cover not only the confusing skull base terminology (invagination, impression, etc.) but also for lesions of specific regions of the CVJ.

It is hoped that *Specialty Imaging: Craniovertebral Junction* will be of interest to residents, fellows, and staff in radiology, neurosurgery, and orthopaedic surgery, and anyone who deals with patients with skull base and CVJ pathology.

Finally, I would like to thank my coauthors and the staff at Amirsys for the effort and care that went into the production of this book. Their expertise, diligence, perseverance, and encouragement made this work possible.

Jeffrey S. Ross, MD
Neuroradiology
Barrow Neurological Institute
St. Joseph's Hospital
Phoenix, Arizona

PREFACE



ACKNOWLEDGMENTS

Text Editing

Dave L. Chance, MA
Arthur G. Gelsinger, MA
Lorna Kennington, MS
Angela M. Green, BA
Kalina K. Lowery, MS

Image Editing

Jeffrey J. Marmorstone, BS
Lisa A. M. Steadman, BS

Medical Editing

Paras A. Shah, MD

Illustrations

Richard Coombs, MS
Lane R. Bennion, MS
Laura C. Sesto, MA

Art Direction and Design

Laura C. Sesto, MA
Lisa A. M. Steadman, BS

Lead Editor

Rebecca L. Hutchinson, BA

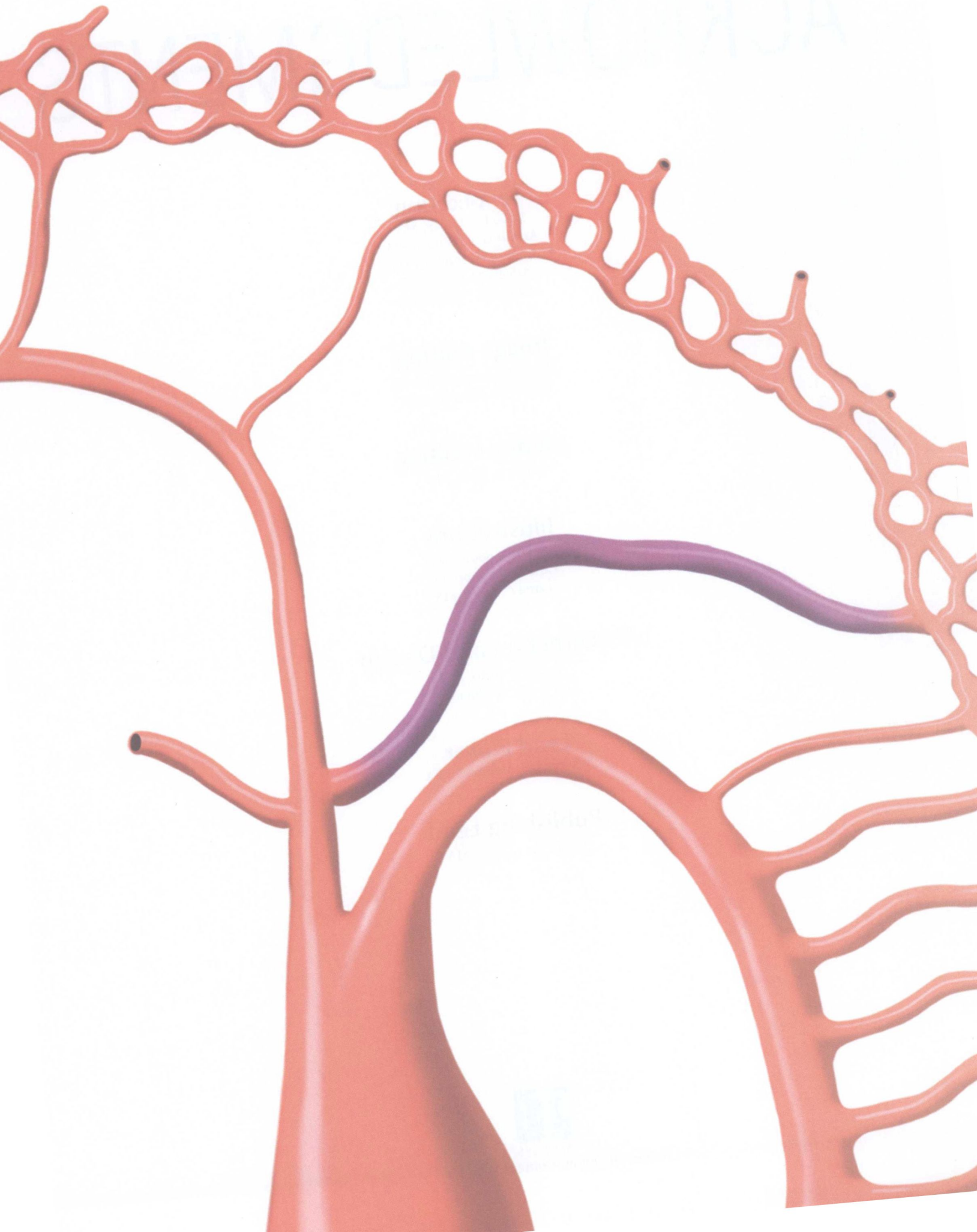
Publishing Lead

Katherine L. Riser, MA



AMIRSYS®

Names you know. Content you trust.®



SECTIONS

Introduction and Overview

Congenital Conditions

Genetic Conditions and Syndromes

Trauma

Degenerative Conditions

Infectious/Inflammatory Conditions

Tumors and Tumor-like Lesions

Vascular Conditions

Devices and Instrumentation

Differential Diagnoses



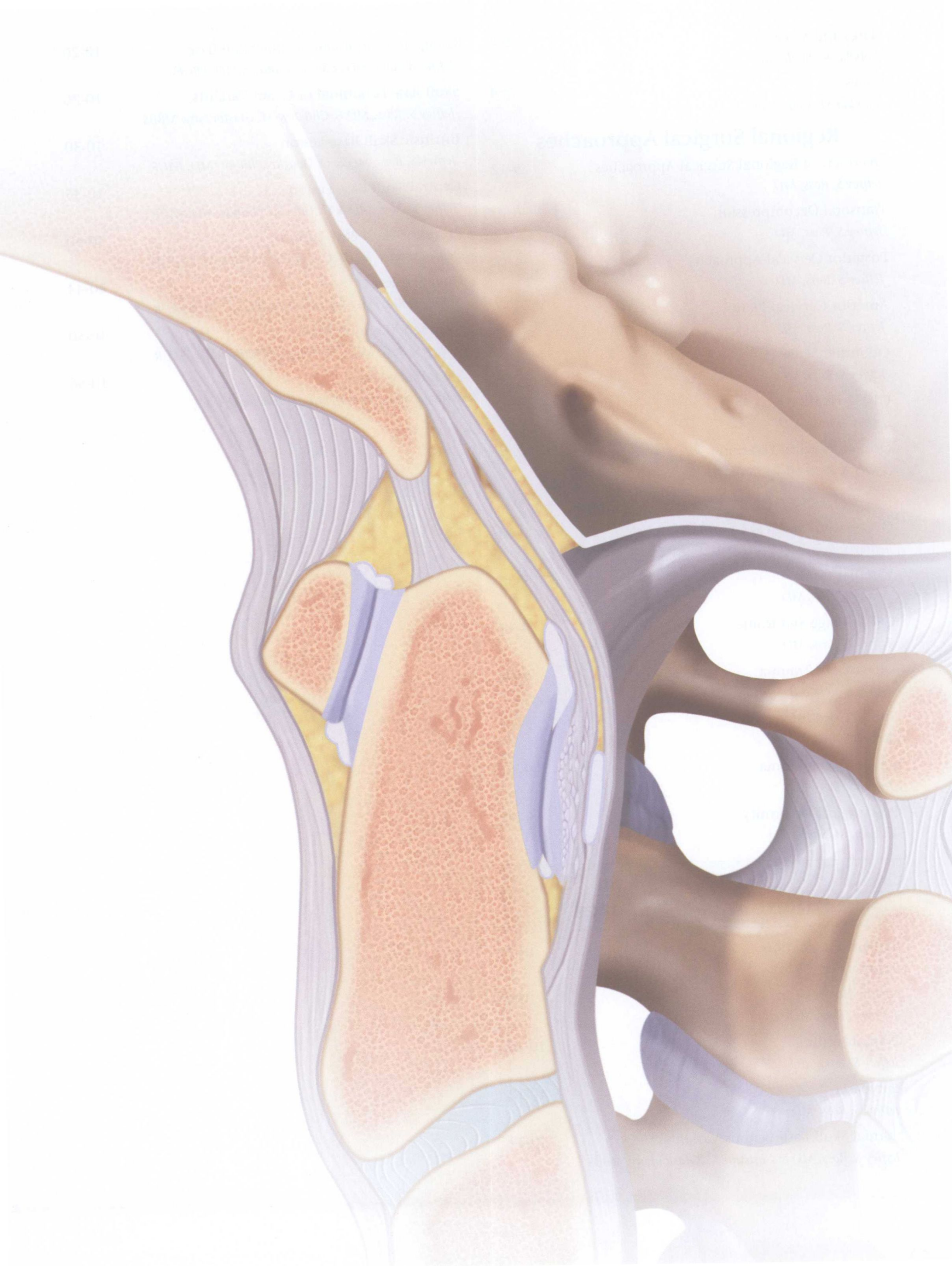


TABLE OF CONTENTS

SECTION 1 Introduction and Overview

Approach to the Craniovertebral Junction	1-2
<i>Jeffrey S. Ross, MD</i>	
Craniovertebral Junction Normal Anatomy	1-4
<i>Jeffrey S. Ross, MD</i>	
Posterior Skull Base	1-22
<i>Jeffrey S. Ross, MD & Hank Baskin, MD</i>	
Vertebrobasilar System	1-32
<i>Jeffrey S. Ross, MD & Anne G. Osborn, MD, FACR</i>	
Posterior Fossa Veins	1-42
<i>Jeffrey S. Ross, MD & Anne G. Osborn, MD, FACR</i>	
Veins of the Skull Base	1-48
<i>Jeffrey S. Ross, MD</i>	
Measurement Techniques	1-64
<i>Jeffrey S. Ross, MD</i>	
Techniques: CT/CTA	1-70
<i>Lubdha M. Shah, MD</i>	
Techniques: MR/MRA	1-72
<i>Lubdha M. Shah, MD</i>	
Techniques: CSF Flow	1-76
<i>Lubdha M. Shah, MD</i>	
Techniques: Cord Motion	1-80
<i>Lubdha M. Shah, MD</i>	
Metal Artifact	1-82
<i>Lubdha M. Shah, MD</i>	

SECTION 2 Congenital Conditions

Approach to Congenital Conditions	2-2
<i>Kevin R. Moore, MD</i>	
Embryology Overview	2-4
<i>Kevin R. Moore, MD</i>	
Bony Variations	
C2-C3 Fusion	2-10
<i>Kevin R. Moore, MD</i>	
C1 Assimilation	2-12
<i>Kevin R. Moore, MD</i>	

Ponticulus Posticus	2-14
<i>Kevin R. Moore, MD</i>	
Ossiculum Terminale	2-16
<i>Kevin R. Moore, MD</i>	
Paracondylar Process	2-18
<i>Jeffrey S. Ross, MD</i>	
Condylus Tertius	2-20
<i>Jeffrey S. Ross, MD</i>	
Posterior Arch Rachischisis	2-22
<i>Kevin R. Moore, MD</i>	
Split Atlas	2-24
<i>Kevin R. Moore, MD</i>	

Diagnoses

Os Odontoideum	2-26
<i>Kevin R. Moore, MD</i>	
Os Avis (Fused to Clivus)	2-30
<i>Kevin R. Moore, MD</i>	
Odontoid Hypoplasia/Aplasia	2-32
<i>Kevin R. Moore, MD</i>	
Chiari 0	2-34
<i>Kevin R. Moore, MD</i>	
Chiari 1	2-36
<i>Kevin R. Moore, MD</i>	
Complex Chiari	2-40
<i>Kevin R. Moore, MD</i>	
Chiari 2	2-42
<i>Kevin R. Moore, MD</i>	
Chiari 3	2-46
<i>Kevin R. Moore, MD</i>	
Proatlas Segmentation Anomalies	2-50
<i>Kevin R. Moore, MD</i>	
C1 Dysmorphism/Hypoplastic Arch	2-54
<i>Kevin R. Moore, MD</i>	
Klippel-Feil Syndrome	2-56
<i>Kevin R. Moore, MD</i>	
Failure of Formation	2-60
<i>Kevin R. Moore, MD</i>	
Failure of Segmentation	2-64
<i>Kevin R. Moore, MD</i>	

Neurenteric Cyst	2-68
<i>Kevin R. Moore, MD</i>	
Epidermoid	2-72
<i>Kevin R. Moore, MD</i>	
Arachnoid Cyst	2-76
<i>Kevin R. Moore, MD</i>	
Syrinx	2-80
<i>Kevin R. Moore, MD</i>	

SECTION 3 Genetic Conditions and Syndromes

Approach to Genetic Conditions and Syndromes	3-2
<i>Kevin R. Moore, MD</i>	
Neurofibromatosis Type 1	3-4
<i>Kevin R. Moore, MD</i>	
Neurofibromatosis Type 2	3-8
<i>Kevin R. Moore, MD</i>	
Achondroplasia	3-12
<i>Kevin R. Moore, MD</i>	
Mucopolysaccharidoses	3-16
<i>Kevin R. Moore, MD</i>	
Osteogenesis Imperfecta	3-20
<i>Kevin R. Moore, MD</i>	
Down Syndrome	3-24
<i>Kevin R. Moore, MD</i>	
Spondyloepiphyseal Dysplasia	3-26
<i>Kevin R. Moore, MD</i>	

SECTION 4 Trauma

Approach to Trauma	4-2
<i>Jeffrey S. Ross, MD</i>	
Atlantooccipital Dislocation	4-4
<i>Lubdha M. Shah, MD</i>	
Ligamentous Injury	4-8
<i>Lubdha M. Shah, MD</i>	
Condyle Fracture	4-12
<i>Lubdha M. Shah, MD & Bryson Borg, MD</i>	
Jefferson Fracture	4-16
<i>Lubdha M. Shah, MD</i>	
Atlantoaxial Rotatory Fixation	4-20
<i>Jeffrey S. Ross, MD</i>	
Odontoid C2 Fracture	4-26
<i>Lubdha M. Shah, MD</i>	
Burst C2 Fracture	4-30
<i>Lubdha M. Shah, MD</i>	

Hangman's C2 Fracture	4-34
<i>Lubdha M. Shah, MD & Bryson Borg, MD</i>	

SECTION 5 Degenerative Conditions

Approach to Degenerative Conditions	5-2
<i>Cheryl A. Petersilge, MD</i>	
Degenerative Arthritis of CVJ	5-4
<i>Cheryl A. Petersilge, MD</i>	
Synovial Cyst	5-8
<i>Cheryl A. Petersilge, MD</i>	
OPLL	5-12
<i>Cheryl A. Petersilge, MD</i>	
DISH	5-16
<i>Cheryl A. Petersilge, MD</i>	
Ossification Ligamentum Flavum	5-20
<i>Cheryl A. Petersilge, MD</i>	
Retroodontoid Pseudotumor	5-24
<i>Cheryl A. Petersilge, MD</i>	

SECTION 6 Infectious/ Inflammatory Conditions

Approach to Infectious/Inflammatory Conditions	6-2
<i>Lubdha M. Shah, MD</i>	
Rheumatoid Arthritis	6-6
<i>Lubdha M. Shah, MD</i>	
Juvenile Idiopathic Arthritis	6-12
<i>Lubdha M. Shah, MD</i>	
Ankylosing Spondylitis	6-16
<i>Lubdha M. Shah, MD</i>	
CPPD	6-20
<i>Lubdha M. Shah, MD</i>	
Longus Colli Calcific Tendinitis	6-24
<i>Lubdha M. Shah, MD</i>	
Pyogenic Infection	6-28
<i>Cheryl A. Petersilge, MD</i>	
Nonpyogenic (Granulomatous) Infection	6-32
<i>Cheryl A. Petersilge, MD</i>	
Epidural Abscess	6-36
<i>Cheryl A. Petersilge, MD</i>	
Grisel Syndrome	6-40
<i>Cheryl A. Petersilge, MD</i>	