

# 21st Century Architecture

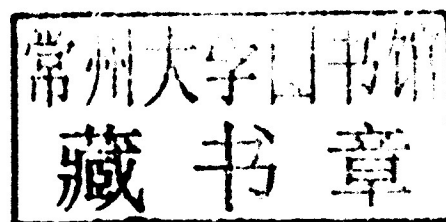
# APARTMENT LIVING



images  
Publishing

# 21st Century Architecture

# APARTMENT LIVING



images  
Publishing

Published in Australia in 2011 by  
The Images Publishing Group Pty Ltd  
ABN 89 059 734 431  
6 Bastow Place, Mulgrave, Victoria 3170, Australia  
Tel: +61 3 9561 5544 Fax: +61 3 9561 4860  
books@imagespublishing.com  
www.imagespublishing.com

Copyright © The Images Publishing Group Pty Ltd 2011  
The Images Publishing Group Reference Number: 971

All rights reserved. Apart from any fair dealing for the purposes of private study, research, criticism or review as permitted under the Copyright Act, no part of this publication may be reproduced, stored in a retrieval system or transmitted in any form by any means, electronic, mechanical, photocopying, recording or otherwise, without the written permission of the publisher.

National Library of Australia Cataloguing-in-Publication entry:

Title:	21st century architecture apartment living / edited by Beth Browne.
ISBN:	9781864704457 (hbk.)
Subjects:	Apartments—Design and construction. Architecture—21st century.
Other Authors/Contributors:	Browne, Beth.
Dewey Number:	728.314

Pre-publishing services by United Graphic Pte Ltd, Singapore

Printed on 140 gsm Chinese Matt Art paper by Paramount Printing Company Limited  
Hong Kong

IMAGES has included on its website a page for special notices in relation to this and its other publications. Please visit [www.imagespublishing.com](http://www.imagespublishing.com).



# Contents

6	3 Mews Dwellings	ODOS architects	118	Maria Borges Apartment	Atelier Bugio Arquitectura
10	15 Central Park West	D'Aquino Monaco Inc.	122	Melbourne Apartment	fmd architects
14	59th Street Penthouse	Mojo Stumer Associates, p.c.	126	Milsons Point	Stanic Harding
18	Apartment 65	Isay Weinfeld Architect	130	Mini Loft	OFIS Arhitekti
22	Apartment K	Atelier Peter Ebner and friends	134	New York Apartment	Zivkovic Connolly Architects
26	Architect's Apartment	Peter Kuczia	138	Norman Reach Penthouse	RLD
30	Attico Apartment	Damilanostudio Architects	142	One Rincon Hill	Carver + Schicketanz Architects
34	Bell Penthouse	Charles Rose Architects	146	Organic Space	MoHen Design International
38	Beverley Street Condo	Reigo & Bauer	150	Pacific Heights Apartment	Seidel Architects
42	Blur Loft	Johnsen Schmaleng	154	Parks Residence	Eggleston   Farkas Architects
46	Bonanova	marià castelló + josé antonio molina saiz, arquitectes	158	Playroom Apartment	Caprioglio Associati Studio di Architettura
50	Bondi Penthouse	BMA	<del>162</del>	<del>P</del> yrmont	Stanic Harding
54	Breck Loft	McIntosh Poris Associates	<del>166</del>	<del>Q</del> uant 1	Ippolito Fleitz Group – Identity Architects
58	Bulletin	Stanic Harding	170	<del>R</del> iverside Drive	D'Aquino Monaco Inc.
62	CAP Apartment	Caprioglio Associati Studio di Architettura	<del>174</del>	<del>R</del> osas Apartment	57STUDIO   Architects
66	Capri Apartment	gbc architetti	178	<del>S</del>	Ippolito Fleitz Group – Identity Architects
70	Carr Apartment	Craig Steely Architecture	182	The SCH	Ippolito Fleitz Group – Identity Architects
74	Collector's Loft	UNStudio	186	Seafront Apartment	Architecture Project
78	Fifth Avenue Townhouse	Mojo Stumer Associates, p.c.	190	SF Apartment	Caprioglio Associati Studio di Architettura
82	FILC Apartment	Caprioglio Associati Studio di Architettura	194	Shuwai	MoHen Design International
86	Harbour's Edge	Hulena Architects Ltd	198	Spring Street Apartment	Rice Design
90	Highpoint	Adam Richards Architects	202	St. Louis Art House	Charles Rose Architects
94	Humelegården Apartment	Tham & Videgård Arkitekter	206	St. Ursula Street Apartment	Architecture Project
98	Kent Street Apartment	RLD	210	Transparent Loft	Olson Kundig Architects
102	LC Apartment	Damilanostudio Architects	214	TriBeCa Loft	Mojo Stumer Associates, p.c.
106	Ludwig Penthouse	Craig Steely Architecture	218	Urban Condominium	Bohlin Cywinski Jackson
110	Manhattan Apartment	Mojo Stumer Associates, p.c.	222	Index of Architects	
114	The Mansion on Peachtree	Harrison Design Associates			

# 21st Century Architecture

# **APARTMENT LIVING**



# 21st Century Architecture

# APARTMENT LIVING

images  
Publishing

Published in Australia in 2011 by  
The Images Publishing Group Pty Ltd  
ABN 89 059 734 431  
6 Bastow Place, Mulgrave, Victoria 3170, Australia  
Tel: +61 3 9561 5544 Fax: +61 3 9561 4860  
books@imagespublishing.com  
www.imagespublishing.com

Copyright © The Images Publishing Group Pty Ltd 2011  
The Images Publishing Group Reference Number: 971

All rights reserved. Apart from any fair dealing for the purposes of private study, research, criticism or review as permitted under the Copyright Act, no part of this publication may be reproduced, stored in a retrieval system or transmitted in any form by any means, electronic, mechanical, photocopying, recording or otherwise, without the written permission of the publisher.

National Library of Australia Cataloguing-in-Publication entry:

Title:	21st century architecture apartment living / edited by Beth Browne.
ISBN:	9781864704457 (hbk.)
Subjects:	Apartments—Design and construction. Architecture—21st century.
Other Authors/Contributors:	Browne, Beth.
Dewey Number:	728.314

Pre-publishing services by United Graphic Pte Ltd, Singapore

Printed on 140 gsm Chinese Matt Art paper by Paramount Printing Company Limited  
Hong Kong

IMAGES has included on its website a page for special notices in relation to this and its other publications. Please visit [www.imagespublishing.com](http://www.imagespublishing.com).



# Contents

6	3 Mews Dwellings	ODOS architects	118	Maria Borges Apartment	Atelier Bugio Arquitectura
10	15 Central Park West	D'Aquino Monaco Inc.	122	Melbourne Apartment	fmd architects
14	59th Street Penthouse	Mojo Stumer Associates, p.c.	126	Milsons Point	Stanic Harding
18	Apartment 65	Isay Weinfeld Architect	130	Mini Loft	OFIS Arhitekti
22	Apartment K	Atelier Peter Ebner and friends	134	New York Apartment	Zivkovic Connolly Architects
26	Architect's Apartment	Peter Kuczia	138	Norman Reach Penthouse	RLD
30	Attico Apartment	Damilanostudio Architects	142	One Rincon Hill	Carver + Schicketanz Architects
34	Bell Penthouse	Charles Rose Architects	146	Organic Space	MoHen Design International
38	Beverley Street Condo	Reigo & Bauer	150	Pacific Heights Apartment	Seidel Architects
42	Blur Loft	Johnsen Schmalig	154	Parks Residence	Eggleston   Farkas Architects
46	Bonanova	marià castelló + josé antonio molina saiz, arquitectes	158	Playroom Apartment	Caprioglio Associati Studio di Architettura
50	Bondi Penthouse	BMA	<del>162</del>	<del>P</del> yrmont	Stanic Harding
54	Breck Loft	McIntosh Poris Associates	<del>166</del>	<del>Q</del> uant 1	Ippolito Fleitz Group – Identity Architects
58	Bulletin	Stanic Harding	170	<del>R</del> iverside Drive	D'Aquino Monaco Inc.
62	CAP Apartment	Caprioglio Associati Studio di Architettura	<del>174</del>	<del>R</del> osas Apartment	57STUDIO   Architects
66	Capri Apartment	gbc architetti	178	<del>S</del>	Ippolito Fleitz Group – Identity Architects
70	Carr Apartment	Craig Steely Architecture	182	The SCH	Ippolito Fleitz Group – Identity Architects
74	Collector's Loft	UNStudio	186	Seafront Apartment	Architecture Project
78	Fifth Avenue Townhouse	Mojo Stumer Associates, p.c.	190	SF Apartment	Caprioglio Associati Studio di Architettura
82	FILC Apartment	Caprioglio Associati Studio di Architettura	194	Shuwai	MoHen Design International
86	Harbour's Edge	Hulena Architects Ltd	198	Spring Street Apartment	Rice Design
90	Highpoint	Adam Richards Architects	202	St. Louis Art House	Charles Rose Architects
94	Humelegården Apartment	Tham & Videgård Arkitekter	206	St. Ursula Street Apartment	Architecture Project
98	Kent Street Apartment	RLD	210	Transparent Loft	Olson Kundig Architects
102	LC Apartment	Damilanostudio Architects	214	TriBeCa Loft	Mojo Stumer Associates, p.c.
106	Ludwig Penthouse	Craig Steely Architecture	218	Urban Condominium	Bohlin Cywinski Jackson
110	Manhattan Apartment	Mojo Stumer Associates, p.c.	222	Index of Architects	
114	The Mansion on Peachtree	Harrison Design Associates			

# 3 Mews Dwellings

DUBLIN, IRELAND

ODOS architects

6



**Credits:** Casey O'Rourke Associates (engineers)

**Floor area:** 190 square metres / 2045 square feet

**Program:** New build of three apartments on a mews laneway

**Ceiling height/s:** 2.5 metres / 8 feet

**Rooms:** Three bedrooms, ensuite, family bathroom, den/theatre-room/garage, living, kitchen/dining, home office, external terraces/decks

**Ventilation:** Natural ventilation from operable window sections and wall vents; bathrooms mechanically ventilated

**Sound attenuation:** Wall insulation, acoustic floor matting and externally mounted air-to-water heat pump

**Green features:** A grey-water harvesting system and a boiler linked to an air-to-water heat pump maximise the use of renewable energy—all external courtyards drain to this grey-water harvesting system located below the upper courtyard to the rear of each dwelling in order to feed the irrigation systems for the gardens, toilets and washing machines

A flexible pattern of built and unbuilt spaces stitched together by a central circulation route formed the design basis for three split-level apartments. Across seven floor plates in total, unbuilt or 'trapped' spaces form a series of outdoor rooms, bringing the experience of landscape and foliage into the core of each dwelling and stimulating a strong spatial dialogue between opposing areas.

The gardens vary in orientation and ensure every room has direct access to natural daylight and ventilation. They also play host to a variety of plant species, ensuring a colourful and scented environment year round. At night, the lighting strategy for these external rooms provides a lit backdrop to the internal spaces and a variety of outlooks.

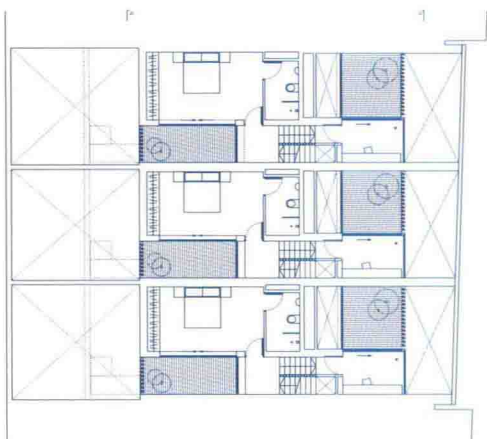
The splits or shifts in floor level allow easy connections between floor plates and swift navigation throughout each dwelling. They also afford a dual aspect to most of the spaces within each dwelling. As the sun moves during the day each space catches indirect sunlight from external rooms beyond.

The material palette in each dwelling, while minimal, offers abundant contrasts. Polished concrete floors are set against soft velvet curtains and voiles. Warm black-stained timber is juxtaposed with the green foliage in the courtyards. A white pebbled courtyard floor contrasts with warm black rendered walls. Internal and external timber fins offer obscured views while the frameless glazed openings offer unimpeded views. Solid walls work in conjunction with open balustrading and mirrored walls, both internally and externally, to create reflections and cast shadows.

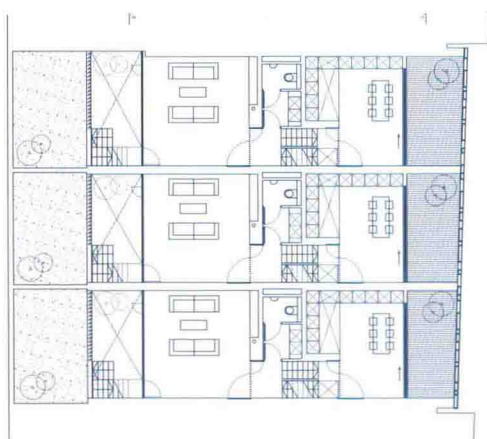
**PHOTOGRAPHY:** Barbara Corsico



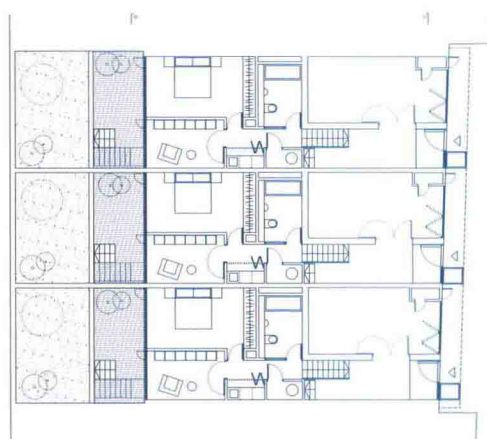




Third floor plan



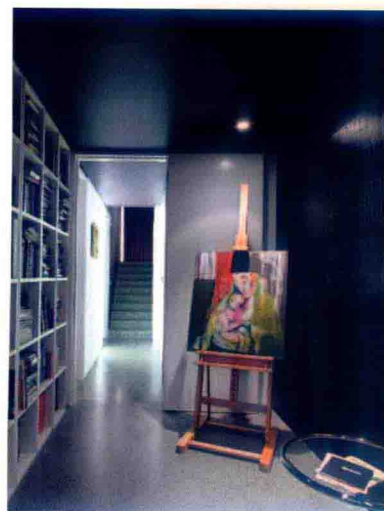
Second floor plan



First floor plan







# 15 Central Park West

NEW YORK CITY, NEW YORK, UNITED STATES **D'Aquino Monaco Inc.**

**Floor area:** 325 square metres / 3500 square feet

**Program:** Interior design and architectural remodelling of an existing apartment

**Ceiling height/s:** 3 metres / 10 feet

**Rooms:** Gallery, living, library/dining, family room, three bedrooms with ensuite bathrooms, kitchen, breakfast room, laundry and powder room

**Ventilation:** Low-airspeed ceiling plenums

**Sound attenuation:** Floor and ceiling insulation, acoustically detached walls and acoustically heavily insulated mechanical equipment (also vibration insulated)

**Green features:** Good insulation, glass with low solar entrée and motor operated translucent screens for all windows

The focus of the interior design and architectural remodelling of this apartment on Central Park West was style and colour. The clients were seeking a varied experience with memorable rooms. By eliminating service corridors and rearranging the kitchen the designers created a spacious backdrop for a new collection of modern art and fine furnishings.

The project became an artistic dialogue between the designers, their clients and a number of artisans. The foyer mouldings were created in collaboration with designers Moss & Lam to establish a sculptural identity for the entrance, removing all traces of the original prewar-style crown moulding. This set the tone and style for the apartment, blending 20th century Italian and French antiques with modern sculptural artworks.

A sculpture by Richard Artschwager that was originally intended for the wall became a ceiling piece in the family room, and is balanced by a gravity-defying storage wall on chrome springs that was created by the designers. In a similar manner, a sensuous Lucite sculpture by Jim Shaw doubles as a unique coffee table in the living room. The designers' love for all things 1940s, particularly Italian designs from this period, is expressed in the extensive use of Fornasetti wallpaper in the kitchen, breakfast room and laundry. Although each room is unique, a playful dialogue between art and design brings the apartment together as a whole.

**PHOTOGRAPHY:** Peter Murdoch



