



# **BUSINESS DIRECTORY OF HONG KONG**

## **1983**



published by  
**CURRENT PUBLICATIONS LIMITED**  
**HONG KONG**

## **BUSINESS DIRECTORY OF HONG KONG**

### **1983 Edition**

Edited by:  
**CHARLES LAU**

Published by:  
**CURRENT PUBLICATIONS LTD.**  
504 Enterprise Building  
238 Queen's Road Central  
G.P.O. Box 9848  
Hong Kong

Printed by:  
Liang Yu Printing Factory Ltd., Hong Kong.

End-paper Map "Hong Kong and the New Territories"  
reproduced with permission of the Lands  
Department © Hong Kong Government.

Copyright © 1983, Current Publications Ltd.  
All rights reserved. No part of this Directory  
may be reproduced in any form without written  
permission from the publisher.

ISBN 962-7046-01-9

# BUYERS AND SELLERS.



## Our tradeshows bring them together...effectively and efficiently.

The tradeshows and expositions of Cahners Exposition Group (CEG) have long been recognized as leading marketplaces in over 25 different industries. Thanks to the professionalism of the world's largest and most successful show management team.

To you, the marketing executive, this means lowering the cost of sales by having qualified buyers call on you in the best possible selling environment.

An amazing 40% to 60% of CEG show visitors are top management executives. In 1983, they'll purchase an estimated two billion dollars worth of products and services from CEG exhibitors. This year alone, more than 26,000 exhibitors will contract over six

million square feet of exhibit space at CEG's over 100 trade and consumer shows such as the National Hardware Show, World Woodworking Expo, the NEPCON series of Electronics Manufacturing Expositions, the Design Engineering Show, The INFO Show, etc.

Results are the reason why nearly 90% of CEG exhibitors come back show after show.

CEG is continually developing new shows as well—to better serve the needs of changing markets around the world.

Our experience and knowledge will bring you and your customers together...effectively and efficiently.

### Cahners Exposition Group—World Wide Offices



**Cahners  
Exposition  
Group**

Inquiries To:

#### Cahners Exposition Group Corporate Headquarters

999 Summer Street  
P.O. Box 3833  
Stamford, CT 06905  
Phone: 203/964-0000  
Telex: 649400 CAHEX WU STD

#### Chicago

Cahners Plaza  
1350 East Touhy Avenue  
P.O. Box 5060  
Des Plaines, IL 60018  
(312) 299-9311  
Telex: 82882 CEG CHGO

#### Boston

221 Columbus Avenue  
Boston, MA 02116  
(617) 536-7780  
Telex: 940573 CPC BSN

#### Los Angeles

Richlar Plaza  
12233 West Olympic Boulevard  
Los Angeles, CA 90064  
(213) 826-6070  
Telex: 194351 SHOWCOINT

#### London

Cahners Exposition Group, S.A.  
Cavendish House, Ladyhead  
Guildford, Surrey GU1 1BZ England  
Guildford, (0483) 38085  
Telex: 859466 CAHNNERS G

#### Tokyo

Cahners Exposition Group, S.A.  
Hino Building 3F  
3-4-11 Uchikanda  
Chiyoda-ku, Tokyo 101, Japan  
03-254-6041  
Telex: 27280 CEG JPN

#### Singapore

Cahners Exposition Group, S.A.  
#15-01  
Shaw Centre  
1 Scotts Road  
Singapore 0922  
235-9145/46  
Telex: RS39200 CEGSP

#### Hong Kong

Cahners Exposition Group, S.A.  
2322 Sun Hung Kai Centre  
30 Harbour Road  
Hong Kong  
5-8919195  
Telex: 62270 CEG HX

### Clapp & Poliak—A Cahners Exposition Group Company

#### New York

Clapp & Poliak  
(A Cahners Exposition  
Group Company)  
708 Third Avenue  
New York, NY 10017  
(212) 661-8410  
Telex: 12 6185 CLAPPOLIAK NY

#### Chicago

Martin C. Dwyer International  
(A Cahners Exposition  
Group Company)  
400 N. Michigan Avenue  
Chicago, IL 60611  
(312) 467-4590  
Telex: 256 155 MCD CGO

#### Washington, D.C.

Clapp & Poliak International  
(A Cahners Exposition  
Group Company)  
7315 Wisconsin Avenue  
P.O. Box 70007  
Washington, D.C. 20088  
(301) 657-3090  
Telex: 908727

#### Düsseldorf

Clapp & Poliak GmbH  
(A Cahners Exposition  
Group Company)  
Robert Stolz Str. 5  
4 Düsseldorf, West Germany  
0211-62-68-37  
Telex: 858-4776 CPMA D

#### Birmingham

Clapp & Poliak  
(A Cahners Exposition  
Group Company)  
Unit 20, Erdington Industrial Park  
Chester Road, Erdington  
Birmingham B24 0RD, England  
021-364-3384  
Telex: 335924 CNPINC G

#### London

Clapp & Poliak Europe  
(A Cahners Exposition  
Group Company)  
232 Acton Lane  
London W4 5DL, England  
01-747-3131  
Telex: 936028 CLAPOL G



# Bank Negara Indonesia 1946

(Incorporated in Indonesia)

HONG KONG BRANCH

25, DES VOEUX ROAD CENTRAL

HONG KONG

G.P.O. BOX NO. 158

PHONE: 5-248011, 221176

HEAD OFFICE:

1, JALAN LADA, P.O.BOX 1946 KB/JAK

JAKARTA KOTA – INDONESIA

CABLE : KANTORBESAR    TELEX : 42702, 42703 & 42721

PHONE : 672075 (20 LINES)

# CEDAR COMPANY

G.P.O. Box 2173, Hong Kong. Tel: 5-434702 (3 Lines) & 5-432655

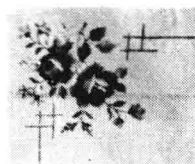
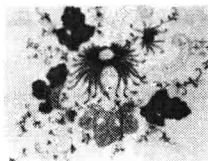
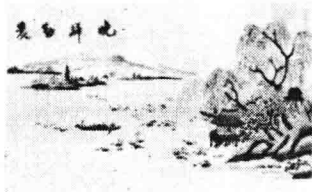
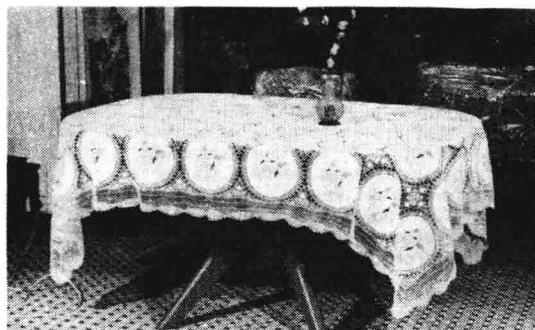
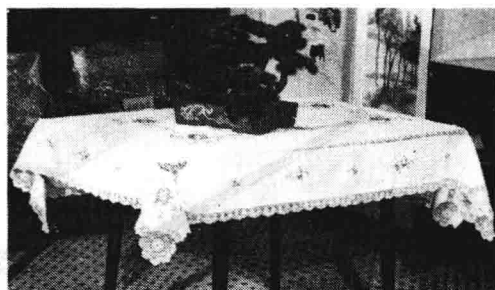
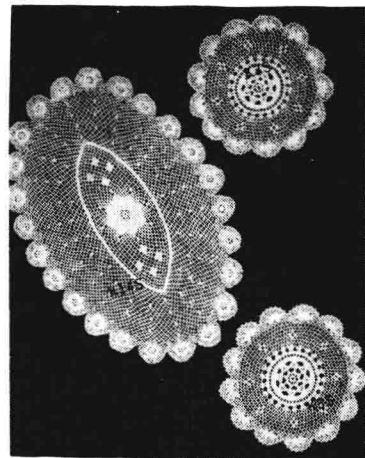
504 Enterprise Building, 228 Queen's Road Central, Hong Kong. Telex: 84014 HX. Cable: AMYMYEUNG.

---

Are you looking for Chinese Goods ?

We can supply you:

- \* Hand Swatow Crochet Tablecloths,
- \* Hand Swatow Crochet Doilies & Traycloths;
- \* Hand Embroidered Tablecloths;
- \* Hand Embroidered Ladies' Blouses;
- \* Machine Embroidered Pillow-Cases;
- \* Hand Embroidered Men's Shirts;
- \* Hand Embroidered Ladies' Nightgowns;
- \* Hand Embroidered Happy-coats & Kimono.



# Time twice-told

CITIZEN QUARTZ  
**DIGI-ANA**



Now you can  
have it both ways.

**Citizen's new Digi-ana.**

It keeps track of time with a 24-hour digital display that shows you hours, minutes, month, day, date and year. The stopwatch function shows minutes, seconds and 1/100 seconds. It can be set to tell the correct time either locally or in any other parts of the world by the conventional dial with hands. This digital/analog watch measures only 8.3mm in thickness, a slimness made possible by Citizen's unique single-crystal construction. It comes complete with a power cell that will last approximately three years. Citizen's sophisticated new Quartz Digi-ana. Simple in style, complex in function. The best of both worlds. Time twice-told.

 **CITIZEN**

On purchase of any Citizen Quartz watch, please insist on the Citizen worldwide guarantee certificate with the date of purchase clearly stamped on.

**You may now  
have your liaison office  
in Hong Kong,  
the gateway to China.**

*For details, contact:*

**CHARLES LAU & CO. LTD.  
1501 Enterprise Building,  
238 Queen's Road Central,  
G.P.O. Box: 2362,  
HONG KONG.  
Phone: 5-434702  
Telex: 84014 HX  
Cable: "LAUPUILAM"**



## *Your Solution*

Whenever you want to approach selected people (such as the professionals, top business executives, government officials, upper-income people, etc.) for business promotion, Direct Mail is your solution.

Because Direct Mail is the most effective, efficient & economical medium of direct advertising, more and more businessmen need it for business promotions.

We have thousands of well-classified name-lists suitable for your requirement, and we provide you the most-demanded Direct Mail service in Hong Kong.



### THE HONGKONG DIRECT MAIL & ADVERTISING CO.

504 Enterprise Building, 238 Queen's Road Central

G.P.O. Box 2362, Hong Kong

Tel: 5-434702 (3 Lines)

Cable: "LAUPUILAM" Hong Kong

Telex: 84014 HX

## 重要消息

閣下所經營的業務，在推廣過程中，可以而且極需要運用郵遞廣告，將您的商品或服務，透過信件方式，直接介紹給顧客知道，藉以謀求更佳的廣告效果。

可是，如果爲了寄發大量廣告信件，而勞動高級人員化費寶貴的時間去調查和搜集顧客對象的姓名地址，又要職員放下正常的工作去打信封地址，還有，更要使用租金昂貴的辦公室來處理印刷品、疊摺文件、套入信封等瑣碎事務，實在是不合算的！

香港郵遞廣告公司，創立於一九七〇年，專業各種郵遞廣告服務，擁有數以萬計現成而準確的地址，分類精細，專誠爲工商行號、金融企業、服務公司、文化機構、慈善社團等，策劃郵遞廣告運動；服務範圍包括：印刷廣告宣傳文件和信封信紙、疊摺函件、打信封地址、套入待寄文件親送郵政總局付寄等等。

本公司積聚多年豐富經驗，委託代辦郵遞工作，不但省錢省力免除麻煩，而且可以得到滿意的服務和更大的效果。

閣下如有大量信件寄發，請交本公司代辦。

香港郵遞廣告公司

香港皇后大道中二三八號  
聯業大廈五〇四室  
電話：五—四三—四七〇二



# Current Publications Limited

巨輪出版社有限公司

G.P.O. Box 9848, Hong Kong. Tel: 5-434702 (3 Lines).

504 Enterprise Building, 238 Queen's Road Central, Hong Kong. Telex: 84014 HX. Cable: CURRENT.

---

## AN IMPORTANT ANNOUNCEMENT

Since 1977 the BUSINESS DIRECTORY OF HONG KONG has been compiled to provide comprehensive information on general business facilities in Hong Kong, and to serve both local and overseas companies and organisations in the promotion of international trade and general business contacts.

This is the 7th edition of the Directory. The present edition has been once again completely up-dated, with listings of over 11,500 firms and organisations.

I would like to record here our sincere thanks to those of the selected 2500-plus chambers of commerce and trade associations in all over the world, who have kindly displayed the complimentary copies of this Directory in their commercial libraries and to recommend it to their business communities and our trading partners abroad in the past 6 years.

Following the suggestions of our readers and comments from users of this Directory, we are going to expand.

The next edition of BUSINESS DIRECTORY OF HONG KONG will be further expanded by adding to it some other increasing-important business listings, while the present various sections of "manufacturers" will be removed to form the major part of a newly-created directory, another Current's publication.

Publisher & Editor

## GENERAL HOLIDAYS FOR 1983

Every Sunday .....	—
The First week-day in January .....	Saturday, 1 January
The day Preceding Lunar New Year .....	Saturday, 12 February
The second day of Lunar New Year .....	Monday, 14 February
The third day of Lunar New Year .....	Tuesday, 15 February
Good Friday .....	Friday, 1 April
The day following Good Friday .....	Saturday, 2 April
Easter Monday .....	Monday, 4 April
Ching Ming Festival .....	Tuesday, 5 April
The Birthday of Her Majesty the Queen .....	Saturday, 11 June
The Monday following the Queen's Birthday .....	Monday, 13 June
Tuen Ng (Dragon Boat) Festival .....	Wednesday, 15 June
The Saturday Preceding the last Monday in August .....	Saturday, 27 August
The last Monday in August, which shall be Liberation Day .	Monday, 29 August
The day following the Chinese Mid-Autumn Festival .....	Thursday, 22 September
Chung Yeung Festival .....	Friday, 14 October
The first week-day after Christmas Day .....	Monday, 26 December
The second week-day after Christmas Day .....	Tuesday, 27 December

## 一九八三年公眾假期

逢星期日

一月份第一個週日 .....	一月一日星期六
農曆年初一之前一日 .....	二月十二日星期六
農曆年初二 .....	二月十四日星期一
農曆年初三 .....	二月十五日星期二
耶穌受難節 .....	四月一日星期五
耶穌受難節翌日 .....	四月二日星期六
復活節星期一 .....	四月四日星期一
清明節 .....	四月五日星期二
英女皇壽辰 .....	六月十一日星期六
英女皇壽辰後第一個星期一 .....	六月十三日星期一
端午節 .....	六月十五日星期三
八月份最後一個星期一之前一個星期六 .....	八月二十七日星期六
八月份最後一個星期一（重光紀念日） .....	八月二十九日星期一
中秋節翌日 .....	九月二十二日星期四
重陽節 .....	十月十四日星期五
聖誕節後第一個週日 .....	十二月二十六日星期一
聖誕節後第二個週日 .....	十二月二十七日星期二

# Trade in Progress

## Hong Kong Overall Merchandise Trade (HK\$M)

	Jan.-Dec. 1982	Jan.-Dec. 1981	% Change
Imports	142,893	138,375	+3
Domestic Exports	83,032	80,423	+3
Re-Exports	44,353	41,739	+6
Total Exports	127,385	122,162	+4
Total Trade	270,278	260,537	+4
Balance of Trade	-15,508	-16,213	-4
Visible Gap as % of Total Trade	5.7	6.2	

## Imports : Major Suppliers (HK\$M)

	Jan.-Dec. 1982	Jan.-Dec. 1981
China	32,935	29,510
Japan	31,540	32,130
USA	15,459	14,442
Singapore	10,207	10,627
Taiwan	10,198	10,762
UK	6,892	6,283
South Korea	4,557	5,495
Fed. Rep. of Germany	3,506	3,383
Switzerland	2,669	2,848
Australia	2,266	2,005

## Imports : Major Groups (HK\$M)

	Jan.-Dec. 1982	Jan.-Dec. 1981
Raw materials	56,444	55,895
Consumer goods	38,614	36,975
Capital goods	19,943	20,257
Foodstuffs	16,785	14,660
Fuels	11,107	10,588

## Domestic Exports : Major Markets (HK\$M)

	Jan.-Dec. 1982	Jan.-Dec. 1981
USA	31,223	29,200
UK	7,187	7,710
Fed. Rep. of Germany	7,031	7,048
China	3,806	2,924
Japan	3,167	2,940
Australia	2,832	2,710
Canada	2,637	2,355
Singapore	1,964	1,732
Netherlands	1,692	1,598
France	1,507	1,483

## Domestic Exports : Major Products (HK\$M)

	Jan.-Dec. 1982	Jan.-Dec. 1981
Clothing	28,824	28,288
Toys, dolls and games	9,111	7,313
Watches	5,529	6,272
Textiles	5,052	5,302
Radios	3,493	3,834
Electronic components for computer	1,642	2,111
Handbags	1,101	1,116
Hairdryers, curlers and curling tong heaters	1,034	905
Electric fans	928	1,278
Footwear	745	833

## Re-exports : Major Markets (HK\$M)

	Jan.-Dec. 1982	Jan.-Dec. 1981
China	7,992	8,044
USA	5,615	4,785
Indonesia	4,615	4,272
Singapore	3,648	3,243
Taiwan	2,662	2,420
Japan	2,566	2,792
South Korea	1,699	1,401
Macau	1,588	1,407
Philippines	1,485	1,294
Saudi Arabia	941	582

## Re-exports : Major Products (HK\$M)

	Jan.-Dec. 1982	Jan.-Dec. 1981
Textiles	6,431	6,981
Chemicals and related products	3,909	3,581
Electrical machinery, apparatus and appliances and electrical parts	3,420	3,069
Photographic apparatus, equipment and supplies and optical goods, watches and clocks	3,218	3,393
Articles of apparel and clothing accessories	3,021	2,197
Crude materials, inedible except fuels	3,002	3,249
Food	2,883	2,128
Non-metallic mineral manufactures	2,565	2,708

## Values and volume - monthly progress (HK\$M)

	Imports		Domestic Exports		Re-exports		Total Trade
	\$M	Quantum Index (1973:100)	\$M	Quantum Index (1973:100)	\$M	Quantum Index (1973:100)	
1980	111,651	209	68,171	195	30,072	253	209,894
1981	138,375	233	80,423	210	41,739	324	260,537
1982	142,893		83,032		44,353		270,278
Monthly Average							
1981	11,531		6,702		3,478		21,711
		(1981:100)		(1981:100)		(1981:100)	
Jan. 1982	10,023	81	6,239	91	3,319	87	19,581
Feb.	11,220	91	4,694	67	3,597	93	19,511
Mar.	12,178	99	6,577	93	3,714	96	22,469
Apr.	12,302	101	6,541	93	3,589	93	22,432
May	11,340	94	6,854	97	3,760	99	21,954
June	11,714	98	6,953	97	3,451	91	22,118
July	12,376	104	7,680	106	3,578	94	23,634
Aug.	11,583	96	7,742	106	3,613	95	22,938
Sept.	11,826	99	7,218	101	3,723	99	22,767
Oct.	12,218	99	7,087	99	3,615	96	22,920
Nov.	12,199	98	7,148	101	3,939	103	23,286
Dec.	14,045		8,391		4,496		26,932

## Area Comparison (HK\$M)

	Imports Jan.-Dec. 1982	Domestic Exports Jan.-Dec. 1982	Re-exports Jan.-Dec. 1982
Asia (excluding China)	64,861	9,591	21,229
China	32,935	3,806	7,992
West Europe	20,978	23,704	3,152
EEC	17,176	19,559	2,407
North America	16,579	33,860	5,971
Australia	2,266	2,832	688
Africa	1,102	2,548	1,842
Middle East	1,748	3,508	2,273
Latin America	931	2,032	799
Rest of World	1,493	1,151	407



1 APRIL, 1983

# POSTAGE RATES AND SERVICES

## AIR MAIL

In general the limits of weight and dimensions and other conditions (except postage rates) prescribed for surface mails apply also to articles to be sent by air. Countries are divided into two zones according to distance for the purpose of charging air postage on letter mail. The air postage rates for letter mails to the two zones are shown in the table below:

		Zone 1	Zone 2
Letters and Postcards:	First 10 g	\$1.00	\$1.30
	Each additional 10 g	\$0.60	\$0.70
Second Class Mail:	First 10 g	\$0.60	\$0.90
	Each additional 10 g	\$0.40	\$0.50

**A BLUE AIR MAIL LABEL**, obtainable free at any post office, should be affixed to all air mail at the top left hand corner on the address side.

**AEROGRAMMES** obtainable at any office may be sent to all countries at a uniform rate of \$1.00. Enclosures are not permitted.

**SECOND CLASS AIR MAIL** Printed papers, Small Packets, sent by air must conform to the regulations for such articles and must be clearly marked in the upper left hand corner of the cover to show the service intended. Such items must not be sealed against inspection and must not contain anything in the nature of a current letter.

**THE LATEST TIMES OF POSTING** shown in this leaflet are subject to alteration due to changes in schedules, delay to aircraft etc. Day to day details of despatches are published in the local newspapers.

## SPEEDPOST

**SPEEDPOST** is available to major towns and cities in Australia, Bahrain (state of), Belgium, Brazil, Canada, China (People's Republic of), France, Germany (Fed. Republic of), Great Britain and Northern Ireland, Japan, Korea (Rep. of), Kuwait, Macau, Malaysia, Netherlands, Singapore (Rep. of), South Africa (Rep. of), Switzerland, Taiwan and United States of America and provides a highly reliable and speedy postal service for the despatch by air of business and commercial papers. In addition, samples of no commercial value, and merchandise, may also be sent to certain of the above countries. Details about Speedpost service are shown on page 7. For further information please ring the Post Office Enquiry Bureau on 5-2671222.

## INTELPOST

**INTELPOST** is a public facsimile transmission service for the sending of business documents, letters and even seasonal or festive greetings. It is available to the United Kingdom and United States of America. Charges are shown on page 6. For further information please ring the Post Office Enquiry Bureau on 5-2671222 or the Post Office Intelpost Representative on 5-2671148.

## INLAND MAIL

LETTERS &  
POSTCARDS  
PRINTED  
PAPERS

Weight not over	\$	\$
30 g	0.30	0.30
50 g	0.60	0.30
100 g	0.80	0.50
250 g	1.30	0.80
500 g	2.50	1.30
1 kg	5.00	2.00
2 kg	7.50	—

## SURFACE MAIL

LETTERS &  
POSTCARDS  
PRINTED  
PAPERS  
SMALL  
PACKETS

Weight not over	China Macau Taiwan \$	All other Countries \$	China Macau Taiwan \$	All other Countries \$	See general information \$
20 g	0.40	1.00	0.30	0.90	2.00
50 g	0.80	1.50	0.50	1.30	2.00
100 g	1.60	2.40	0.80	2.00	2.00
250 g	3.60	4.80	1.50	3.60	4.00
500 g	7.00	9.20	2.50	6.50	7.00
1 kg	12.00	16.00	4.50	10.80	12.00
2 kg	17.00	26.00	6.00	15.00	—
Each additional 1 kg (Books only up to 5 kg)	—	—	3.00	7.50	—

Literature for the Blind: Free (Weight Limit: 7 kg)

Inland Parcels: Each kg \$5.00 (Weight Limit: 10 kg)

## GENERAL INFORMATION

**REGISTRATION.** A fee of \$4 is charged to all destinations. If an advice of receipt is required an additional fee \$4.00 should be paid at the time of posting. Requests for advice of receipt are accepted only at the time of posting. The weight of the Advice-of-Receipt card is taken into account in assessing the postage of the item tendered for posting.

**PARCELS.** These may be sent to the countries indicated on pages 2-6 subject to the regulations in the Post Office Guide concerning weight limitation, customs declaration, despatch notes and compensation.

**INSURED LETTERS AND PARCELS.** These may be sent to the countries indicated on pages 2-6 subject to the regulations set out in the Post Office Guide. The fee is \$2 for each \$400 of insured value or part thereof, payable in addition to the normal postage, and in the case of insured letters in addition to the \$4 registration fee.

**EXPRESS.** The express delivery service is available to the countries indicated on pages 2-6. The additional fee is \$3. An Express label, obtainable free at any post office, must be affixed to each express item.

**SMALL PACKETS.** The small packet service is available to all overseas destinations. The maximum weight limit is 1 kg except to Australia, Bhutan, Bolivia, Burma, Canada, Colombia, Cuba and Papua New Guinea which accept small packets weighing up to 500 g only.

**CUSTOMS CONTROL.** All goods sent abroad by post, whether in letter packets, small packets or parcels, must be declared to Customs on special forms available at post offices. Please consult the Post Office Guide for full details on all aspects of these services and details about: Packing, Insurance, Registration, Customs documentation, Prohibitions and Restrictions.

**ENQUIRIES.** For further information about postal services ask at any Post Office or ring the Post Office Enquiry Bureau on 5-2671222.

## SIZE LIMITS

**LETTERS, PRINTED PAPERS, SMALL PACKETS, LITERATURE FOR THE BLIND.**

Other than roll form: Maximum: 900 mm in length, width and depth combined; greatest dimension 600 mm. Minimum: 90 mm x 140 mm.

Roll form: Maximum: length plus twice the diameter must not exceed 1.04 m, greatest dimension 900 mm.

Minimum: length plus twice the diameter must not be less than 170 mm, greatest dimension not less than 100 mm.

POSTCARDS: Maximum: 105 mm x 148 mm. Minimum: 90 mm x 140 mm. Thickness: not less than 0.25 mm.

## PARCELS

Other than roll form: Maximum: length 1.05 m, length and girth combined 2 m. Minimum: as for letters.

Roll form: Maximum: length 1.05 m, length and girth combined 2 m. Minimum: as for letters.



一九八三年四月一日

# 郵費及服務

## 空郵

平郵郵件適用之重量及尺度限制以及其他規定(郵費除外)，大致上亦適用於空郵物品。為計算航空信件之郵費起見，各國乃依距離劃分二區，寄往該二區之航空信件收費率如下：

信件及明信片	首10克 每加10克	一區	二區
		\$1.00 \$0.60	\$1.30 \$0.70
二等郵件	首10克 每加10克	\$0.60 \$0.40	\$0.90 \$0.50

**藍色航空標誌** 所有空郵郵件，須於書寫收件人姓名地址之一面左上角貼上藍色航空標誌，各郵局均備有此種標誌免費供人取用。

**航空郵簡** 不論寄往何國，郵費一律一元。郵簡內不得附有任何物品。各郵局均有發售。

**二等空郵** 印刷品及小郵包如以空郵投寄，必須符合投寄此類物品之規則。此外，並須在郵件封面左上角標明二等空郵。此等郵件，不得封密妨礙檢查，亦不得夾有類似普通信件之紙張。

**截郵時間** 由於時間表變動，飛機誤點等原因，載於本散頁之截郵時間可隨時更改。日常遞送詳情，刊載於本港各大報章。

## 特快專遞

**特快專遞** 此項服務可直達澳洲、巴林、比利時、巴西、加拿大、中國、法國、德國聯邦共和國、英國及北愛爾蘭、日本、南韓、科威特、澳門、馬來西亞、荷蘭、新加坡、南非、瑞士、台灣及美國之主要市鎮及城市，為商業文件之航空寄遞提供一項非常快捷可靠之郵遞服務。此外，商品及無商業價值之樣本亦可寄至上述某些國家。特快專遞之資料列於本散頁第七頁。有關詳細資料，請致電5-2671222郵政服務詢問部查詢。

## 電訊專遞

**電訊專遞** 乃是一項高速傳真服務，用以發送商業文件，書信以至節日賀辭前往英國及美國。這項服務的收費刊載於第六頁。如欲取得詳細資料，請致電5-2671222郵政服務詢問部或5-2671148電訊專遞服務代表查詢。

### 本港郵件

### 平郵

信件及明信片		印刷品	信件及明信片		印刷品		小郵包	
重量不超過			重量不超過	中國 澳門 台灣 \$	其他 國家 \$	中國 澳門 台灣 \$	其他 國家 \$	請參閱一般 事項 \$
	\$	\$						
30克	0.30	0.30	20克	0.40	1.00	0.30	0.90	2.00
50克	0.60	0.30	50克	0.80	1.50	0.50	1.30	2.00
100克	0.80	0.50	100克	1.60	2.40	0.80	2.00	2.00
250克	1.30	0.80	250克	3.60	4.80	1.50	3.60	4.00
500克	2.50	1.30	500克	7.00	9.20	2.50	6.50	7.00
1千克	5.00	2.00	1千克	12.00	16.00	4.50	10.80	12.00
2千克	7.50	—	2千克	17.00	26.00	6.00	15.00	—
			每加一千克	—	—	3.00	7.50	—
			( 只限書籍 重量限制：五千克 )					

盲人刊物：免費 (重量限制：七千克)

本港包裹：每一千克收費5元(重量限制：十千克)

## 一般事項

**掛號** 寄往任何目的地之郵件，掛號費一律四元。如需發給收訖通知書，投寄時須另付費用四元。要求發給收訖通知書之申請，只在投寄郵件時受理，收訖通知書之重量亦計算在投寄郵件所應付之郵費內。

**包裹** 可寄往之國家列於本散頁第二至六頁。投寄人須遵照載於郵政指南內有關重量限制、報關文件、發遞單及賠償之規則。

**保險信件及包裹** 可寄往之國家列於本散頁第二至六頁。投寄人須遵照載於郵政指南內之規則。保險包裹及信件，除本身郵費外，每四百元或不足四百元之保險價值收費二元，保險信件另收掛號費四元。

**快郵** 快郵派遞服務可達之國家列於本散頁第二至六頁。投寄快郵郵件，須另付費用三元，並須貼上「快郵」標誌，此標誌可向各郵局免費索取。

**小郵包** 所有海外目的地均設有小郵包服務。除澳洲、不丹、波利維亞、緬甸、加拿大、哥倫比亞、古巴和巴布亞新畿內亞均接受重量不超過五百克的小郵包外，小郵包的重量以一千克為限。

**海關管制** 所有寄往外地之物品，不論是否以信件類小包、小郵包或包裹投寄，必須呈報海關。所用之特別表格，可向各郵局索取。有關此等服務各方面之詳情以及有關包裝、保險、掛號、報關文件、禁止入口及限制入口之詳情，請參閱郵政指南。

**詢問** 有關郵政服務之詳細資料，請往任何郵政局或致電5-2671222郵政服務詢問部查詢。

## 體積限制

信件、印刷品、小郵包、盲人刊物

非捲軸狀郵件：最大：長寬厚三者合計以900毫米為限，其中最大之尺度不得超過600毫米。最小：90毫米×140毫米。

捲軸狀郵件：最大：直徑之兩倍及長度合計以1.04米為限，其中最大之尺度不得超過900毫米。

最小：直徑之兩倍及長度不得小過170毫米，其中最大之尺度不得小過100毫米。

明信片：最大：105毫米×148毫米。最小：90毫米×140毫米。厚度：不得小過0.25毫米。

包裹

非捲軸狀包裹：最大：長度以1.05米為限，長度及周長合計以2米為限。最小：與信件同。

捲軸狀包裹：最大：長度以1.05米為限，長度及周長合計以2米為限。最小：與信件同。

## **CORRICK INTERNATIONAL**

*of the United States of America*

### **EXPORTERS**

TOTAL U.S.A. SUPPLY BASE FOR ALL OVERSEAS EQUIPMENT NEEDS. SWIM POOLS, DISPLAY FOUNTAINS, IRRIGATION SYSTEMS, SEWAGE TREATMENT PLANTS AND MUCH MORE. COMPLETE SYSTEMS, PLANS, SPECS, DESIGN.

### **CORRICK INTERNATIONAL**

119 Locust St.,  
Santa Cruz,  
California 95060  
U.S.A.

Telex: 341456  
Phone: (408) 426-9010

## **ZERKA TRADING EST.**

*Importers, Exporters  
& Commission Agents*

All kinds of Products,  
Kitchen Ware,  
Bicycle, etc.

Zerka Trading Est.,  
P.O. Box 534,  
Zerka,  
Jordan.

Telex: 41435  
Person to Contact:  
Mr. Jamal M. Falah



# **reggimpex** S.R.L.

SEDE LEGALE, ADDRESS: Via Secchi, 16 - Telefono n. (0522) 30741 - 2  
42100 REGGIO EMILIA (Italy) ■ Partita IVA e Cod. Fisc. 0020527/035/8  
■ Casella Postale P.O. Box. n. 305 ■ Telex 530466 REGEX I ■ M 681406  
REGGIMPEX ■ Reg. Soc. Trib. R.E. n. 5628 ■ Banca Naz. del Lavoro  
c/c n. 2941 ■ Banca Agricola Comm. c/c n. 8158 ■ C.C.I.A.A. n. 116.419

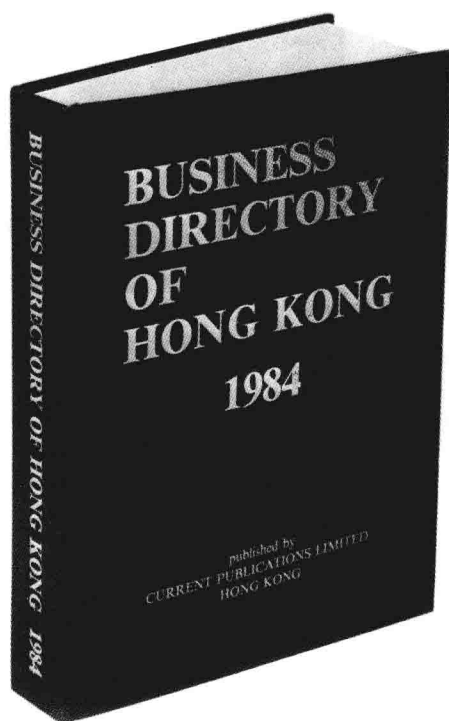
### **IMPORTER OF**

every kind of watches, clocks, table watches, calculators, radio, clock radio,  
LCD pens, walkman stereo radio and tape, car stereo radio, loud speakers,  
antenna, promotional articles.



# Manufacturers —

*Textile & Wearing Apparels*



*This Directory welcomes  
prestige advertisements  
from all over the World.*

*For details and reservation  
in its next edition,  
please contact:*

Advertising Department,  
CURRENT PUBLICATIONS LTD.,  
504 Enterprise Building,  
238 Queen's Road Central,  
G.P.O. Box 9848,  
HONG KONG.  
Phone : 5-434702 (3 Lines)  
Cable : "CURRENT"  
Telex : 84014 HX