

SYMPOSIA
OF THE SOCIETY FOR
EXPERIMENTAL BIOLOGY

NUMBER XVII

CELL
DIFFERENTIATION

CAMBRIDGE UNIVERSITY PRESS

SYMPOSIA OF THE
SOCIETY FOR EXPERIMENTAL BIOLOGY

NUMBER XVII

CELL DIFFERENTIATION

*Published for the Committee of Biologists
on behalf of the Society for Experimental Biology*

CAMBRIDGE: AT THE UNIVERSITY PRESS

PREFACE

The seventeenth Symposium of the Society for Experimental Biology was held in Edinburgh from 3 to 8 September 1962 at the invitation of the University. The topic discussed, although of basic interest for biology in general, has been one to which zoologists have perhaps paid more attention in recent years than have botanists. Nevertheless, studies on the differentiation of plant cells are progressing rapidly and it was felt that it might be profitable at this stage to give some preference to contributions from this field when arranging the programme.

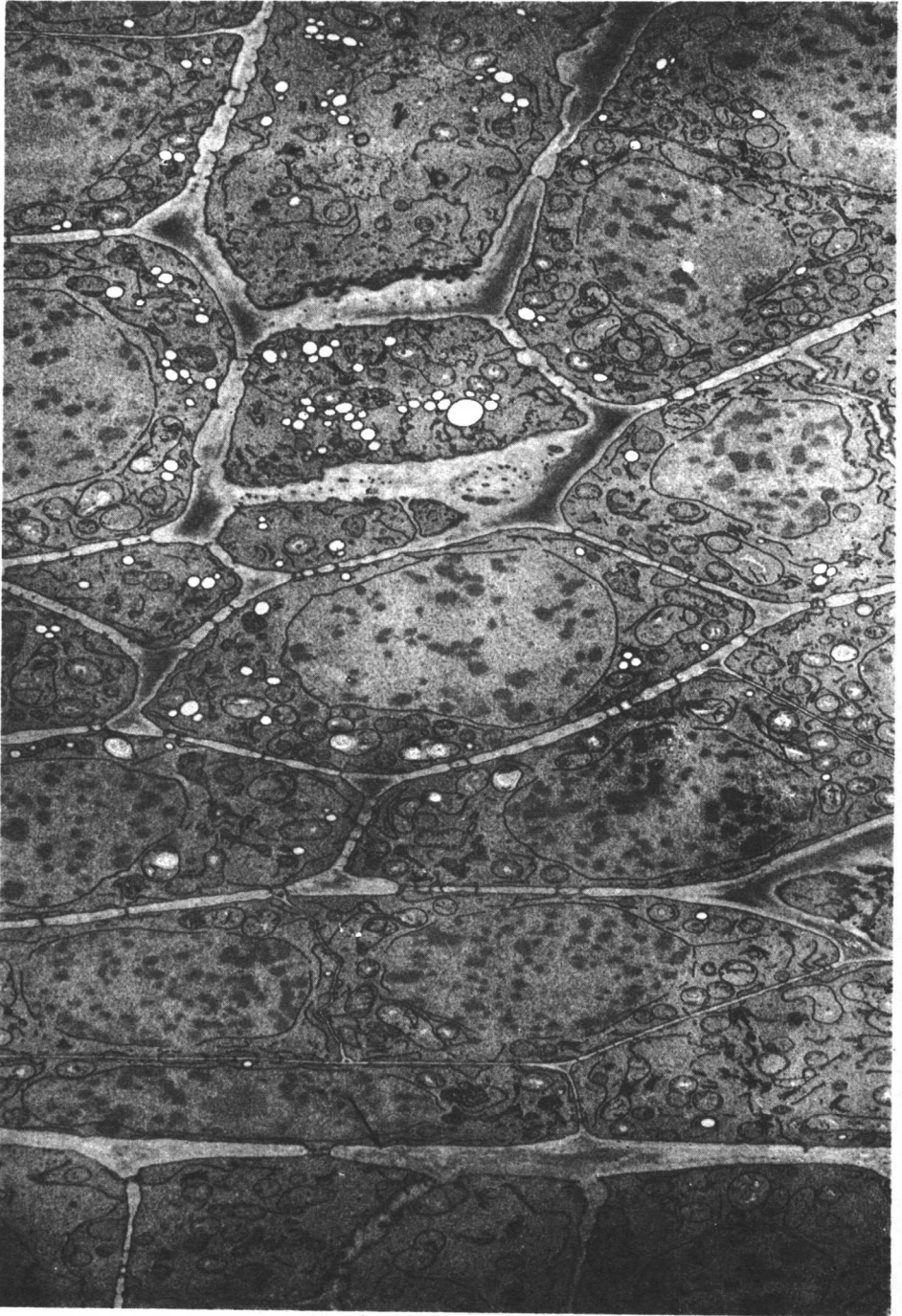
The Society is indebted to the University of Edinburgh for its hospitality and for the provision of facilities and to members of its academic and technical staffs for their generous help in organizing the meeting. Thanks are also due to the National Science Foundation, U.S.A., and to the National Research Council, Canada, for grants towards the travelling expenses of North American contributors.

Professor G. Chapman acted as Symposium Secretary and Dr J. E. Dale as Local Secretary. To these, to the Cambridge University Press for its assistance in the preparation of this volume, and to Miss R. M. Cox, who prepared the indexes, the Editor wishes to express his deep appreciation.

G. E. FOGG

*Editor of the seventeenth Symposium of the
Society for Experimental Biology*

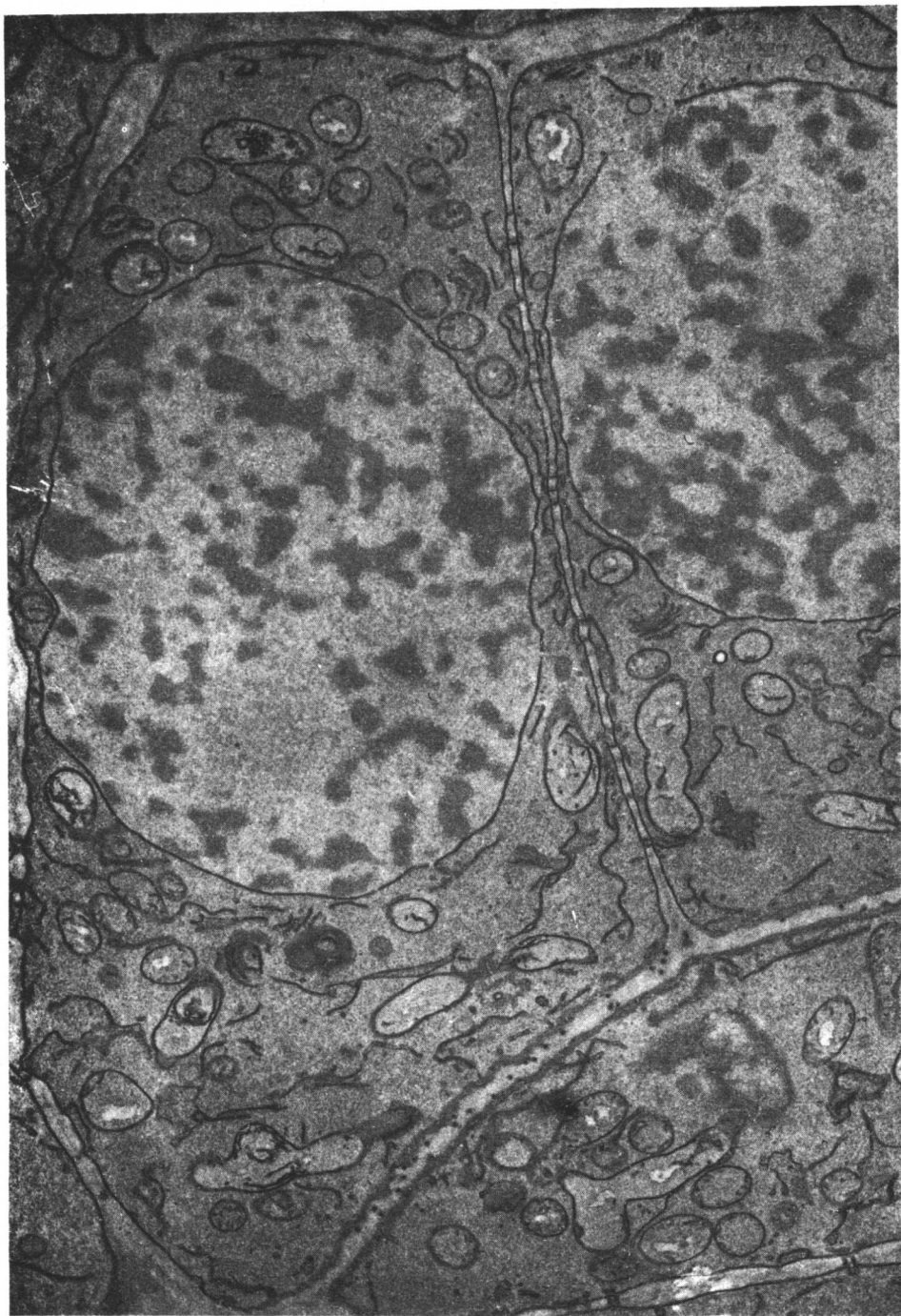
PLATE I



For explanation see p. 83

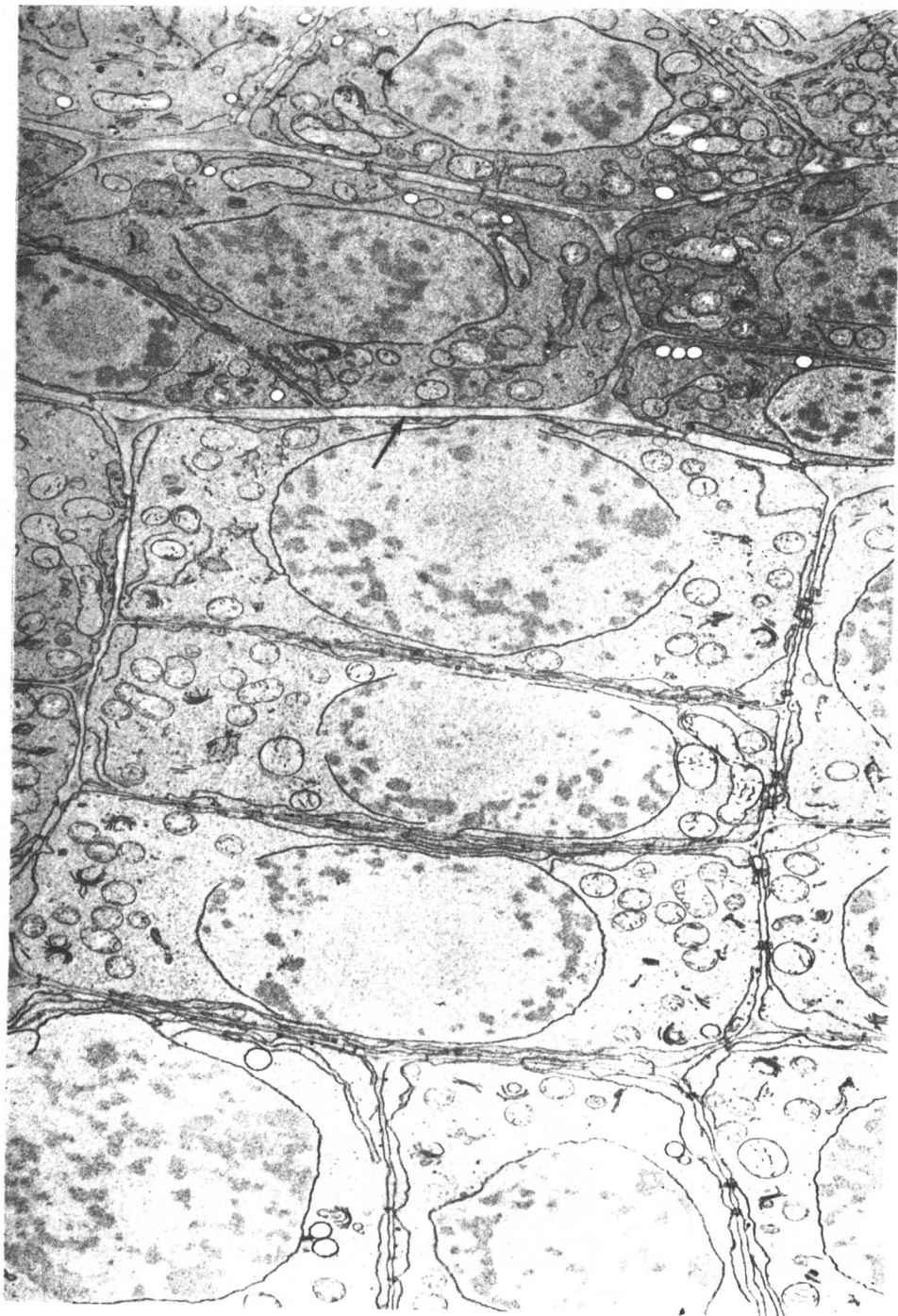
(Facing p. 80)

PLATE 2

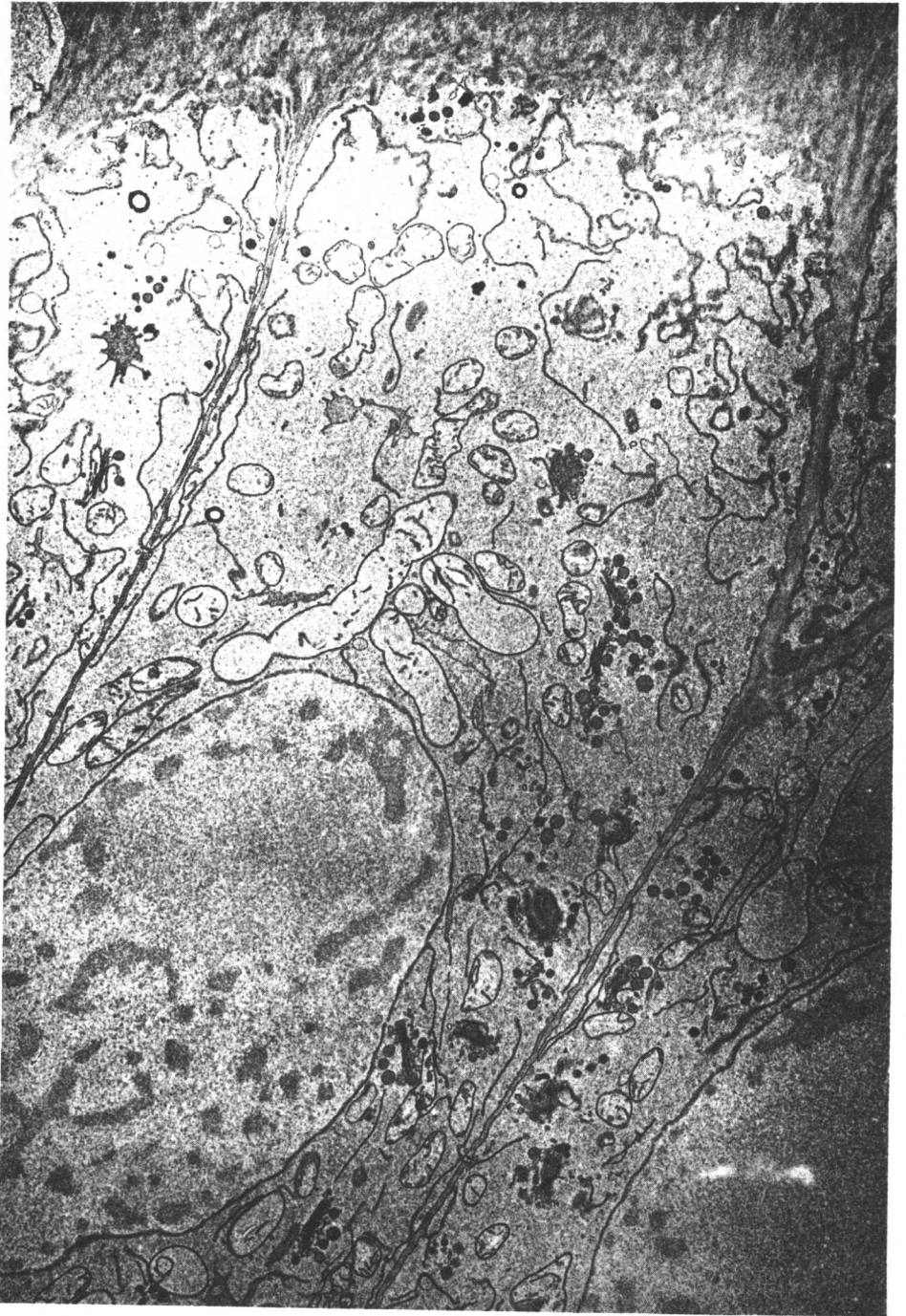


For explanation see p. 83

PLATE 3



For explanation see p. 83

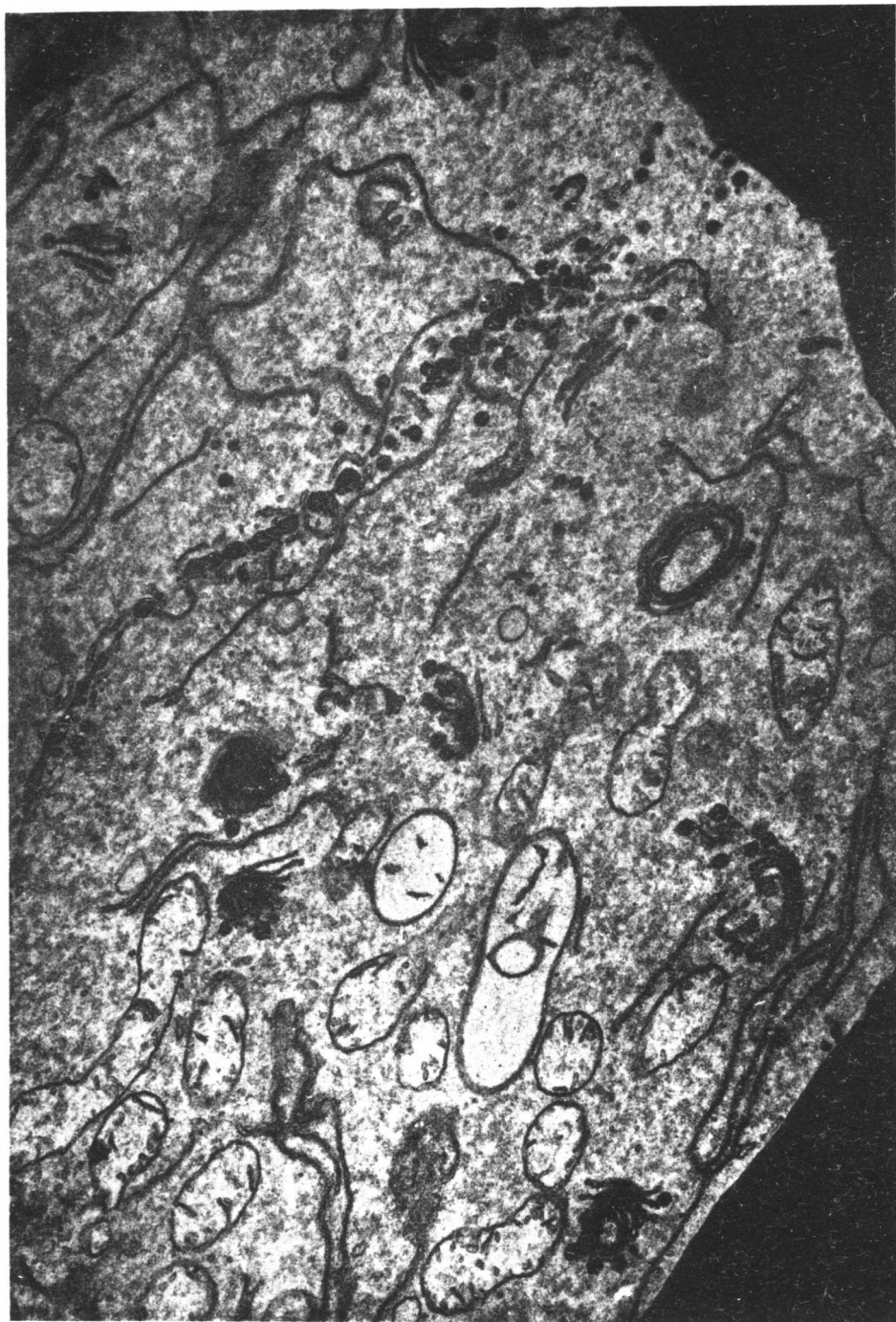


For explanation see p. 83



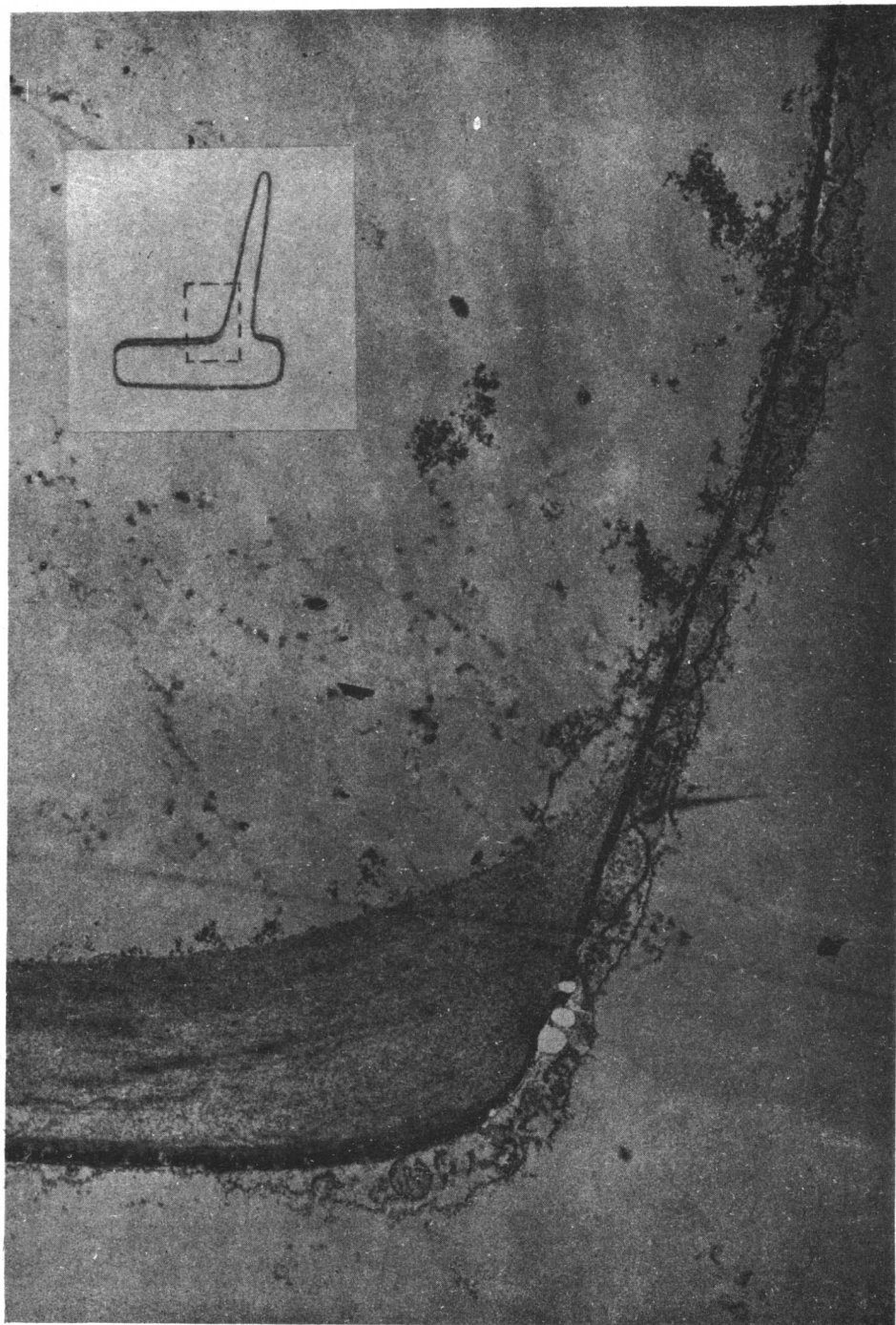
For explanation see p. 83

PLATE 6

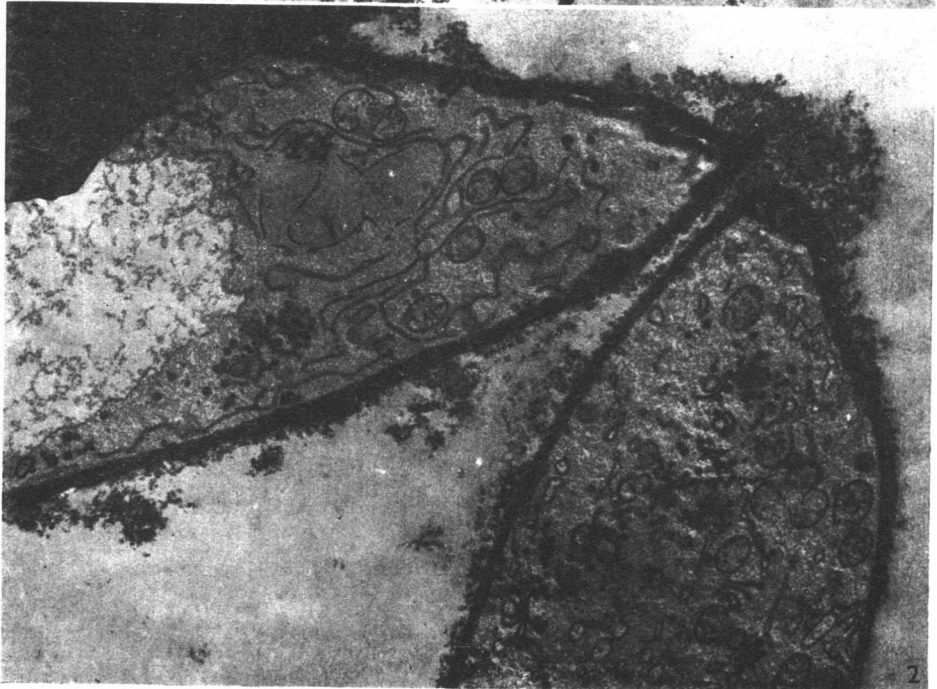


For explanation see p. 84

PLATE 7

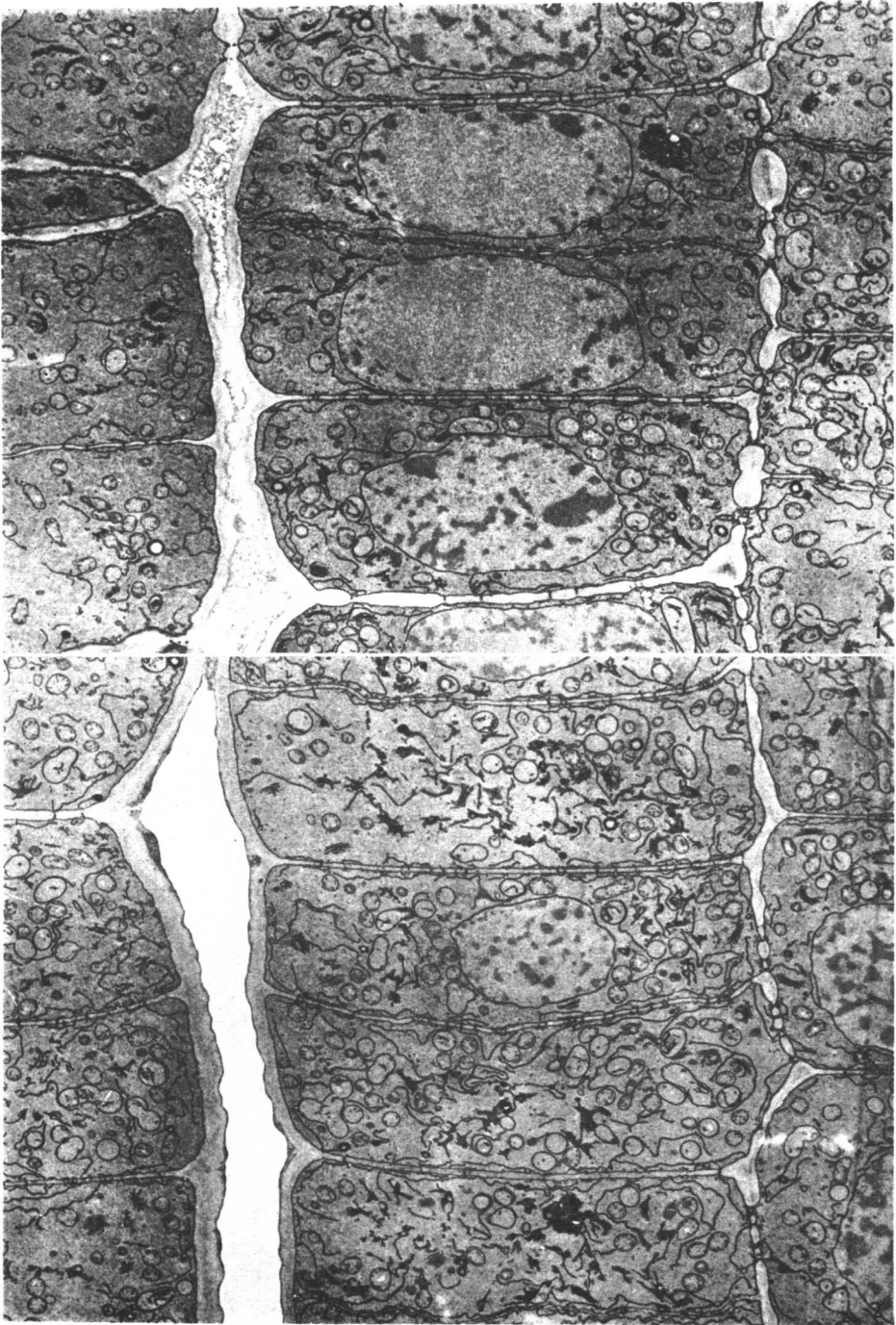


For explanation see p. 84



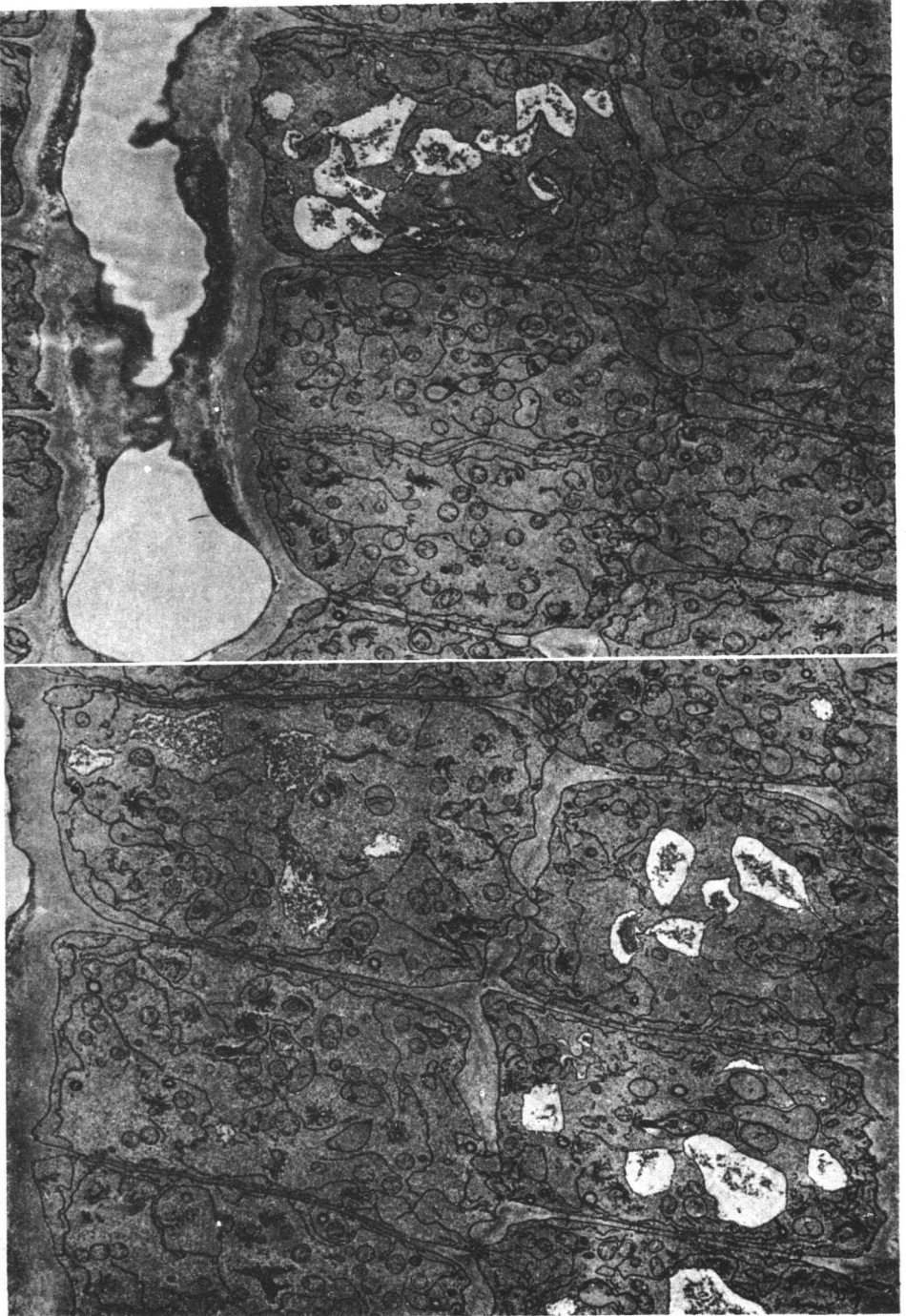
For explanation see p. 84

PLATE 9



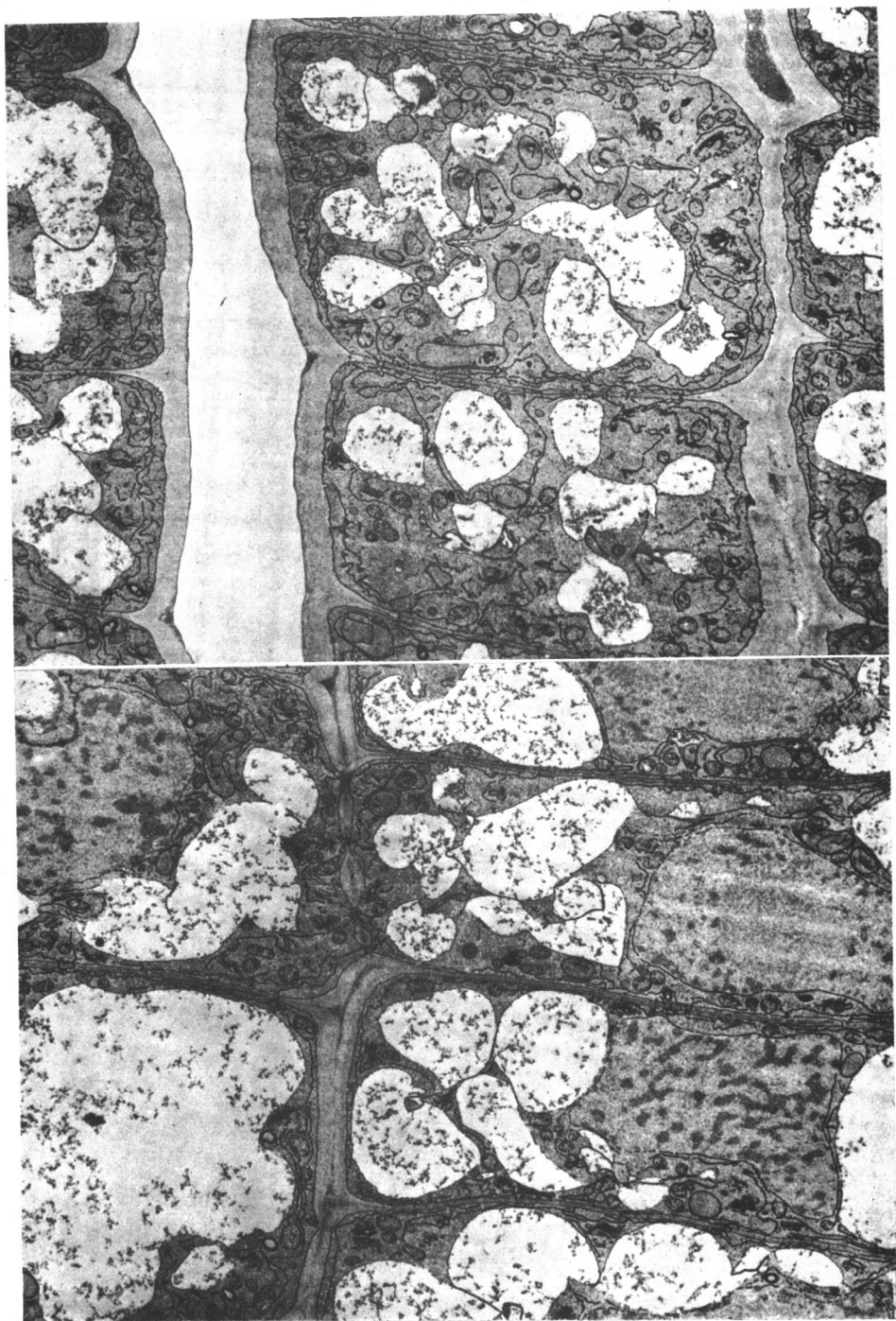
For explanation see p. 84

PLATE IO



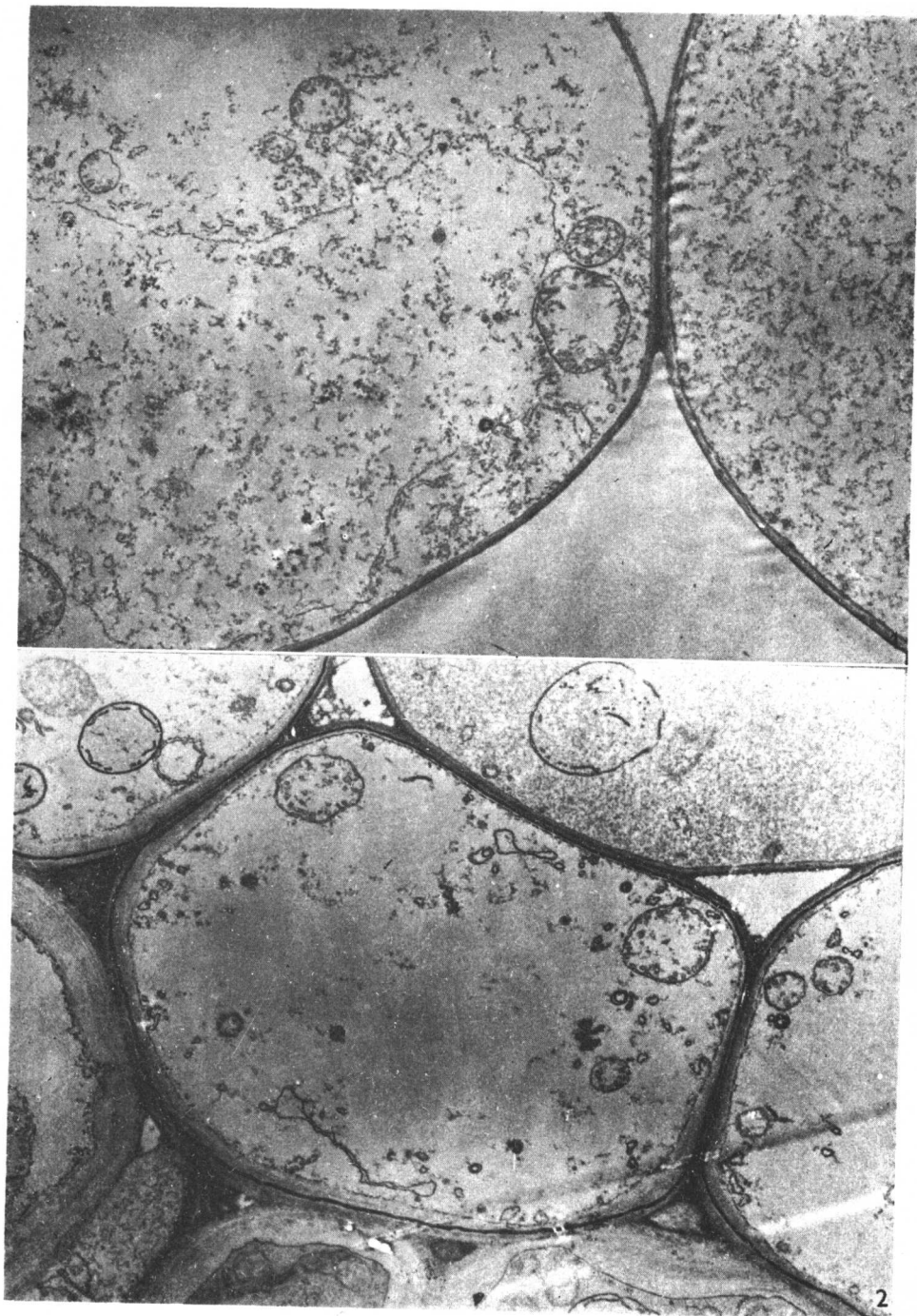
For explanation see p. 84

PLATE II



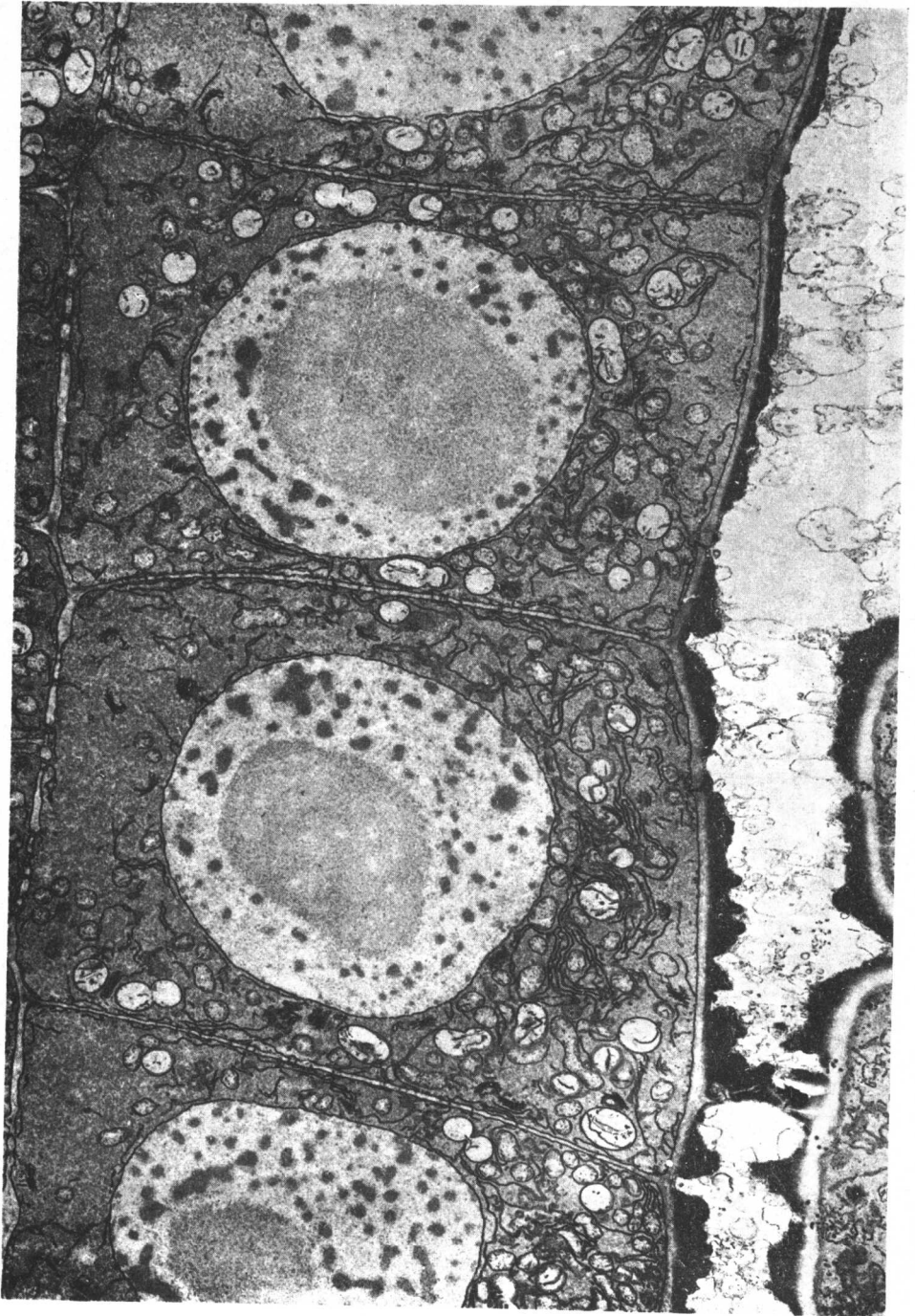
For explanation see p. 84

PLATE 12



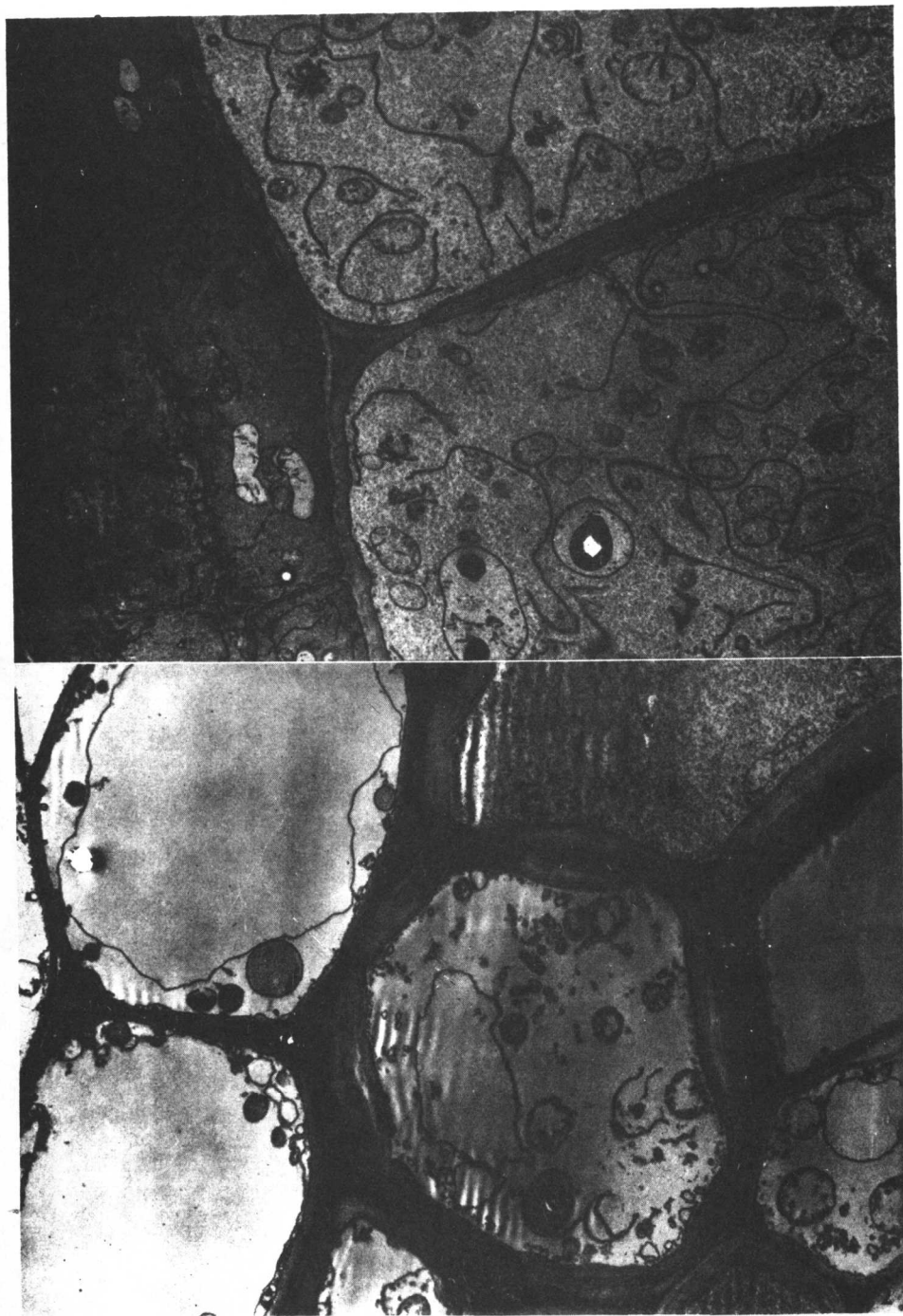
For explanation see p. 84

PLATE 13



For explanation see p. 84

PLATE I4



For explanation see p. 84