

Longman Integrated Stage 1 Non-Fiction  
Comprehension and  
Composition Series

---

# **Round the World**

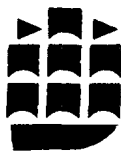
*Michael Paine*

Longman Integrated    Stage 1    Non-Fiction  
Comprehension and  
Composition Series

---

# **Round the World**

*Michael Paine*



Longman

# I Leningrad

Leningrad is a city in the north west of the U.S.S.R. It stands on the river Neva. It is a beautiful place with wide streets, squares and parks. In the squares and parks you can see statues of famous people. In the city you can see eighteenth-century palaces, museums and churches.

- 5
- 10 The Great Winter Palace is a museum. The Hermitage is near this museum. You can see famous paintings there. In the summer, Leningrad is a popular place for tourists. They walk
- 15 along the wide streets and look at the fine buildings. They walk along the banks of the river and over the old bridges, too.



## GUIDED COMPOSITION

Answer these questions in one paragraph using complete sentences. Do not use more than 60 words.

- 1 Is Leningrad a city in the U.S.S.R., or not?
- 2 Does it stand on the river Neva or on the river Volga?
- 3 Is it a beautiful place, or not?
- 4 Where can you see eighteenth-century palaces, museums and churches?
- 5 What is the Great Winter Palace?
- 6 Is Leningrad a popular place for tourists, or not?
- 7 Do they walk along the wide streets and look at the fine buildings, or not?

## MULTIPLE CHOICE QUESTIONS

Only one answer in each exercise is right. Choose (a), (b), (c) or (d).  
Then look at the text.

- 1 Leningrad is a city
  - (a) in the north east of the U.S.S.R.
  - (b) on the river Volga.
  - (c) with squares and parks.
  - (d) with nineteenth-century palaces
- 2 In the Hermitage
  - (a) are museums and churches.
  - (b) are hundreds of old bridges.
  - (c) is the Great Winter Palace.
  - (d) is a collection of paintings.
- 3 The Great Winter Palace is ..... museum. (lines 10–11)
  - (a) a (b) the (c) an (d) one
- 4 The Hermitage is ..... this museum. (ll. 11–12)
  - (a) on (b) to (c) near (d) at
- 5 In summer, tourists ..... along the banks of the river. (ll. 13–16)
  - (a) walk (b) walking (c) to walk (d) walks
- 6 In the squares and parks you can see ..... of famous people.  
(ll. 5–7)
  - (a) paintings (b) models (c) designs (d) statues
- 7 You can see ..... paintings there. (ll. 12–13)
  - (a) wide (b) small (c) famous (d) new
- 8 In the summer, Leningrad is a ..... place for tourists. (ll. 13–14)
  - (a) hot (b) popular (c) big (d) long

## SENTENCE STRUCTURE

Join these sentences using 'and'; then check your answer against the text.

They walk along the wide streets. They look at the fine buildings.  
They walk along the wide streets ..... (lines 14–15)

## 2 The Nile

- Lake Victoria is between Kenya, Uganda and Tanzania. The White Nile flows north from it. The land near this river is marsh and swamp. The White Nile meets the Blue Nile at Khartoum. Khartoum is in the Sudan. The Blue Nile comes down from the mountains of Ethiopia. The river goes north from Khartoum into Egypt. At Aswan there is a big dam. This stores the river water. It makes electric power, too. North of Cairo is the Nile Delta. There the land is very fertile. Egyptian farmers grow cotton, rice and maize.



### GUIDED COMPOSITION

Answer these questions in one paragraph using complete sentences. Do not use more than 50 words.

- 1 Does the White Nile meet the Blue Nile at Khartoum or at Cairo?
- 2 Does the river go north from Khartoum into Egypt, or not?
- 3 What is there at Aswan?
- 4 Does this store the river water, or not?
- 5 What does it make?
- 6 What do the Egyptian farmers grow in the Nile Delta?

## MULTIPLE CHOICE

Only one answer in each exercise is right. Choose (a), (b), (c) or (d).

- 1 The White Nile
  - (a) flows down from the mountains.
  - (b) flows north from Khartoum.
  - (c) is north of Cairo.
  - (d) flows north from Lake Victoria.
- 2 The Nile Delta is
  - (a) north of Cairo.
  - (b) between Uganda and Tanzania.
  - (c) in the Sudan.
  - (d) in Kenya.
- 3 The land ..... this river is marsh and swamp. (lines 3–5)
  - (a) on (b) in (c) near (d) between
- 4 The White Nile ..... the Blue Nile at Khartoum. (ll. 5–6)
  - (a) meets (b) meet (c) is meeting (d) is going to meet
- 5 At Aswan there is a big ..... (ll. 11–12)
  - (a) fence (b) barrier (c) gate (d) dam
- 6 It ..... electric power, too. (l. 13)
  - (a) makes (b) make (c) making (d) to make
- 7 This ..... the river water. (ll. 12–13)
  - (a) flows (b) stores (c) makes (d) finds
- 8 There the land is very ..... (ll. 14–15)
  - (a) raw (b) fertile (c) full (d) pure

## SENTENCE STRUCTURE

Join these sentences using 'and'; then check your answer against the text.

Egyptian farmers grow cotton.

They grow rice.

They grow maize. (line 15)

### 3 Kuwait



- Kuwait is a small country in the Arabian Gulf. It is small, but it is rich. It is rich in oil. Men pump the oil out of the desert and take it to Europe. It goes in tankers from the port of Ahmedi. The capital is Kuwait City. It is a big, modern city with fine shops, schools and hospitals. Medicine is free in Kuwait. Education is free, too. Thousands of pupils go to school and students study at the big, new university. The Kuwaitis are good businessmen. They buy and sell goods from Europe, America and Japan.
- 5

#### GUIDED COMPOSITION

Answer these questions in one paragraph using complete sentences. Do not use more than 50 words.

- 1 Is Kuwait a rich country, or not?
- 2 Is it rich in oil or is it rich in coal?
- 3 Where do men take the oil?
- 4 Where does it go in tankers from?
- 5 What is the capital?
- 6 Is it a city with fine schools, or not?
- 7 Is education free or do they pay for it?
- 8 Do thousands of pupils go to school, or not?

## MULTIPLE CHOICE QUESTIONS

Only one answer in each exercise is right. Choose (a), (b), (c) or (d).

- 1 Men pump the oil  
(a) to Europe.  
(b) to the new university.  
(c) out of the desert.  
(d) from the port of Ahmedi.
- 2 Thousands of pupils  
(a) buy and sell goods.  
(b) study at the big, new university.  
(c) are good businessmen.  
(d) go to school.
- 3 Kuwait is rich ..... oil. (line 2)  
(a) with (b) in (c) of (d) from
- 4 Students ..... at the big, new university. (ll. 6–7)  
(a) studies (b) is studying (c) study (d) to study
- 5 The Kuwaitis ..... good businessmen. (ll. 7–8)  
(a) are (b) is (c) am (d) be
- 6 Kuwait is a small ..... (l. 1)  
(a) desert (b) field (c) country (d) valley
- 7 The ..... is Kuwait City. (l. 4)  
(a) head (b) chief (c) centre (d) capital
- 8 ..... is free, too. (l. 6)  
(a) Study (b) Education (c) Knowledge (d) Work

## SENTENCE STRUCTURE

Join these sentences, then check your answer against the text.

Kuwait is a small country. It is in the Arabian Gulf. (line 1)



## 4 The Grand Canyon

- The Colorado River cuts into the rocky earth of Arizona. It cuts a great valley 300 kilometres long and  $1\frac{1}{2}$  kilometres deep. People call this valley, 'The Grand Canyon'. It is a very beautiful place. The wind and the water make towers of rock. The rocks are very big with bands of colours on them. They are white, green, grey and red. In the evening the red sun makes shadows on the steep cliffs. Tourists visit the Grand Canyon. They stand at the top and look down. They look at the cliffs and the silver river in the valley.



### GUIDED COMPOSITION

Answer these questions in one paragraph using complete sentences. Do not use more than 60 words.

- 1 Is the Grand Canyon a deep valley, or not?
- 2 Is it a very beautiful place or a very ugly place?
- 3 What do the wind and the water make?
- 4 Are the rocks very big with bands of colours on them, or not?
- 5 What colours are they?
- 6 Do tourists visit the Grand Canyon, or not?
- 7 What do they look at?

## MULTIPLE CHOICE QUESTIONS

Only one answer in each exercise is right. Choose (a), (b), (c) or (d).

### 1 The Colorado River

- (a) is in a great valley.
- (b) is 300 kilometres long and  $1\frac{1}{2}$  kilometres deep.
- (c) makes bands of colours.
- (d) is white, green, grey and red.

### 2 In the evening

- (a) they stand and look down.
- (b) the rocks are very big.
- (c) the water makes towers of rock.
- (d) the red sun makes shadows.

### 3 It is ..... very beautiful place. (lines 6–7)

- (a) a (b) the (c) some (d) an

### 4 Tourists visit the Grand Canyon. .... stand on the top and look down. (ll. 14–16)

- (a) He (b) She (c) It (d) They

### 5 They look ..... the cliffs. (ll. 16–17)

- (a) at (b) out of (c) after (d) for

### 6 The wind and the water make towers of ..... (ll. 7–8)

- (a) air (b) paint (c) rock (d) tea

### 7 The rocks are very big with ..... of colours on them. (ll. 9–10)

- (a) bands (b) marks (c) rails (d) shapes

### 8 The red sun makes shadows on the ..... cliffs. (ll. 12–13)

- (a) steep (b) hilly (c) flat (d) round

## SENTENCE STRUCTURE

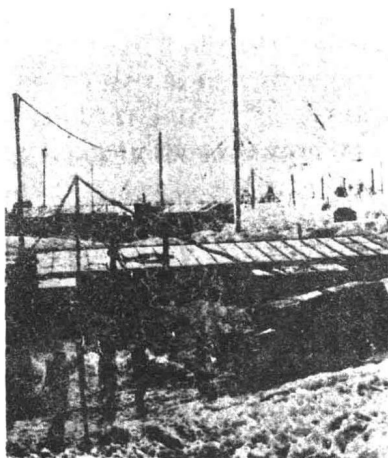
Join these sentences, then check your answer against the text.

The Colorado River cuts into the earth of Arizona. The earth is rocky. (lines 1–2)

## 5 Antarctica

Antarctica is one of the seven continents. It is a continent with mountains and ice. It is a cold and lonely place. The South

- 5 Pole is 1,000 kilometres from the coast. Winds of 150 kilometres an hour blow over it. On the coast is a big wall of ice. Icebergs break off into the sea.
- 10 Penguins live near the water. They catch fish for their food. No land animals live in Antarctica. Flowers and trees do not grow there. Men go to Antarctica in ships and in aeroplanes.
- 15 They live in warm buildings. They study the weather and the penguins. In the spring, men leave their camp and travel across the snow in tractors. They study the rocks under the snow and make maps of new places.



### GUIDED COMPOSITION

Answer these questions in one paragraph using complete sentences. Do not use more than 50 words.

- 1 What is Antarctica?
- 2 Is it a continent with mountains and ice, or not?
- 3 Do penguins live near the sea or near the South Pole?
- 4 What do they catch for their food?
- 5 Do land animals live in Antarctica, or not?
- 6 How do men go to Antarctica?
- 7 What do they do there?

## MULTIPLE CHOICE QUESTIONS

Only one answer in each exercise is right. Choose (a), (b), (c) or (d).

1 Antarctica is

- (a) a cold and lonely place.
- (b) a big wall of ice.
- (c) 1,000 kilometres from the coast.
- (d) breaking off into the sea.

2 Penguins live

- (a) on the South Pole.
- (b) near the water.
- (c) 1,000 kilometres from the coast.
- (d) in the mountains.

3 Winds of 150 kilometres an hour blow ..... the South Pole.  
(lines 6–7)

- (a) on (b) up (c) in (d) over

4 On ..... is a big wall of ice. (l. 8)

- (a) a coast (b) coast (c) coasts (d) the coast

5 Flowers and trees ..... there. (ll. 13–14)

- (a) not grow (b) do not grow
- (c) does not grow (d) not growing

6 Antarctica is one of the seven ..... (ll. 1–2)

- (a) places (b) continents (c) countries (d) lands

7 ..... break off into the sea. (l. 9)

- (a) Snowballs (b) Glaciers (c) Icebergs (d) Ice

8 Men travel across the snow in ..... (ll. 16–17)

- (a) trains (b) carriages (c) ploughs (d) tractors

## SENTENCE STRUCTURE

Join these sentences, then check your answer against the text.

They study the rocks. The rocks are under the snow.

They ..... (lines 17–18)

## 6 Malaysia

The people of Malaysia live in a long, narrow country south of Burma and Thailand. Malaysia is near the equator. It is a hot

5 country and the rainfall is heavy. Big plants and tall trees grow in the valleys. The Malaysians grow rice, coffee, tea and pineapples. They grow coconut palms, too.

10 They get oil and copra from the coconuts. In the mountains, miners look for tin. They do not work under the ground. They wash away the rocks with water.

15 This leaves the tin. Men can grow rubber in Malaysia. They

find gold and petroleum there, too. They sell these things to foreign countries.



### GUIDED COMPOSITION

Answer these questions in one paragraph using complete sentences. Do not use more than 45 words.

- 1 Do the people of Malaysia live in a long narrow country, or not?
- 2 Is it near the equator, or not?
- 3 Is it a hot country or a cold country?
- 4 Is the rainfall heavy, or not?
- 5 What do the Malaysians grow?
- 6 Do they grow coconut palms, too, or not?
- 7 What do they get from the coconuts?

## MULTIPLE CHOICE QUESTIONS

Only one answer in each exercise is right. Choose (a), (b), (c) or (d).

- 1 The people of Malaysia live
  - (a) north of Burma.
  - (b) on the equator.
  - (c) in a long narrow country.
  - (d) in Thailand.
- 2 The miners
  - (a) look for petroleum.
  - (b) work under the ground.
  - (c) grow rubber.
  - (d) wash away the rocks with water.
- 3 Malaysia is ..... the equator. (lines 3–4)
  - (a) on (b) in (c) to (d) near
- 4 They grow ....., too. (l. 9)
  - (a) the coconut palms
  - (b) palm coconuts
  - (c) coconut palms
  - (d) a coconut palm
- 5 They sell ..... things to foreign countries. (ll. 17–18)
  - (a) this (b) that (c) it (d) these
- 6 It is a hot country and the rainfall is ..... (ll. 4–5)
  - (a) strong (b) heavy (c) light (d) loud
- 7 They ..... oil and copra from the nuts. (ll. 10–11)
  - (a) become (b) make (c) take (d) get
- 8 In the mountains, miners look for ..... (ll. 11–12)
  - (a) tin (b) rocks (c) coffee (d) coconut palms

## SENTENCE STRUCTURE

Rewrite these sentences using 'and' and 'too'; then check your answer against the text.

They find gold there. They find petroleum there. (lines 16–17)

## 7 The Dead Sea

The Dead Sea is not a sea. It is a big lake in the Jordan valley. It is near the city of Jericho. The river Jordan runs into the Dead

- 5 Sea. It comes from the north. The lake is 400 metres below sea level. The sun is hot there and the water is salty. Fish cannot live in the salty water and plants
- 10 cannot grow near it. People cannot swim well in the Dead Sea, but they can float on the water. In the picture, a woman is floating on the lake. She is reading a newspaper. The water is very
- 15 blue and the air is clear. In the winter people come to the lake. They sit in the sunshine or bathe in the warm water.



### GUIDED COMPOSITION

Answer these questions in one paragraph using complete sentences. Do not use more than 60 words.

- 1 Is the Dead Sea a sea in the Jordan valley or a lake in the Jordan valley?
- 2 Is it 400 metres below sea level, or not?
- 3 Is the water very salty or very sweet?
- 4 Can fish live in the water, or not?
- 5 Do plants grow near it, or not?
- 6 Can people float on the salty water or do they go under?
- 7 What is happening in the picture?
- 8 What is she reading?

## MULTIPLE CHOICE QUESTIONS

Only one answer in each exercise is right Choose (a), (b), (c) or (d).

- 1 The river Jordan
  - (a) is a lake not a sea.
  - (b) is very salty.
  - (c) is very blue.
  - (d) runs into the Dead Sea.
- 2 People
  - (a) cannot grow near the Dead Sea.
  - (b) cannot swim well in the Dead Sea.
  - (c) cannot run into the Dead Sea.
  - (d) cannot bathe in the Dead Sea.
- 3 The sun is hot there, ..... the water is salty. (lines 7-8)
  - (a) but (b) or (c) too (d) and
- 4 In the picture, a woman ..... on the lake. (ll. 13-14)
  - (a) float (b) is floating (c) floating (d) are floating
- 5 In the winter ..... come to the lake. (l. 15)
  - (a) a people (b) the people (c) peoples (d) people
- 6 The ..... is 400 metres below sea level. (ll. 6-7)
  - (a) pond (b) pool (c) lake (d) bath
- 7 People can ..... on the water. (ll. 13-14)
  - (a) run (b) float (c) dive (d) bathe
- 8 The water is very blue and the ..... is clear. (ll. 14-15)
  - (a) gas (b) smoke (c) steam (d) air

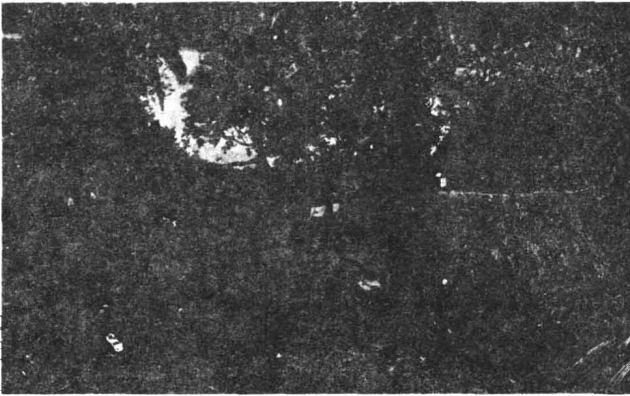
## SENTENCE STRUCTURE

Join these sentences with 'or'; then check your answer against the text.

They sit in the sunshine. They bathe in the warm water. (line 16)



## 8 The Fishermen of Fiji



The islands of Fiji are in the Pacific Ocean. The fishermen of Fiji live in small villages near the sea. These villages are very beautiful. Happy children play under the palm trees. The islanders build their houses on big stones. In the rainy season, the rain runs between the stones and does not go into the houses. The islanders make their roofs with coconut leaves. They cover their floors with mats. The fishermen make their canoes from tree trunks. They go from island to island and collect turtles' eggs. They catch their fish with nets or with spears.

### GUIDED COMPOSITION

Answer these questions in one paragraph using complete sentences. Do not use more than 55 words.

- 1 Are the islands of Fiji in the Pacific Ocean, or not?
- 2 Where do the fishermen of Fiji live?
- 3 Do they build their houses on big stones, or not?
- 4 In the rainy season, does the rain run between the stones or under the stones?
- 5 What do the people make their roofs with?
- 6 Do they cover their floors with mats, or not?