

Create, Edit, and Optimize Your Graphics

PAINT SHOP PRO® 8 SOLUTIONS



Lori J. Davis

Create, Edit, and Optimize Your Graphics

1, 2, 4, 6, 7

PAINT SHOP PRO® 8 SOLUTIONS



Lori J. Davis

Paint Shop Pro 8 Solutions

Copyright ©2003 Muska & Lipman Publishing, a division of Course Technology

All rights reserved. No part of this book may be reproduced by any means without written permission from the publisher, except for brief passages for review purposes. Address all permission requests to the publisher.

Paint Shop Pro 8 is a registered trademark of Jasc Software, Inc.

All other copyrights and trademarks used as examples or references in this book are retained by their individual owners.

Credits: Senior Marketing Manager, Martine Edwards; Marketing Manager, Heather Hurley; Associate Marketing Manager, Kristin Eisenzopf; Manager of Editorial Services, Heather Talbot; Senior Acquisitions Editor, Kevin Harreld; Senior Editor, Mark Garvey; Retail Market Coordinator, Sarah Dubois; Production Editor, Argosy; Copyeditor, Ginny Kaczmarek; Proofreader, Heather Moehn; Technical Editor, Sarah Arnett; Cover Designer, Chad Planner; Interior Design and Layout, Susan Honeywell, LJ Graphics; Indexer, Sharon Shock.

SVP, Retail and Strategic Market Group: Andy Shafran

Publisher: Stacy L. Hiquet

Technology and the Internet are constantly changing, and by necessity of the lapse of time between the writing and distribution of this book, some aspects might be out of date. Accordingly, the author and publisher assume no responsibility for actions taken by readers based upon the contents of this book.

MUSKA & LIPMAN

Library of Congress Catalog Number: 2003104188

ISBN: 1-59200-091-6

5 4 3 2

Educational facilities, companies, and organizations interested in multiple copies or licensing of this book should contact the publisher for quantity discount information. Training manuals, CD-ROMs, and portions of this book are also available individually or can be tailored for specific needs.

Muska & Lipman Publishing,
a Division of Course Technology
25 Thomson Place
Boston, MA 02210
www.muskalipman.com
publisher@muskalipman.com

About the Author

TP 391.4
459

Lori J. Davis

Lori J. Davis is a former college teacher and technical writer who developed a passion for Paint Shop Pro years ago while creating a gardening Web site. She has taught many Paint Shop Pro courses online and has been a beta tester for several versions of Paint Shop Pro and various plug-in filters. She is the co-author of *Paint Shop Pro Web Graphics, 3rd Edition*, and the author of *Paint Shop Pro 6 Power!* and *Paint Shop Pro 7 Solutions*. Lori has a popular Paint Shop Pro Web site, Lori's Web Graphics, at <http://loriweb.pair.com>.

Dedication

In memory of Barbara Ann Rust Davis and Frances Elizabeth Leland Rust Kitson.

Acknowledgments

Thanks to the many talented folks in the Paint Shop Pro community whom I've had the pleasure of interacting with online and in person over the years. Special thanks to my technical editor, Sarah Arnott, and to Kathleen Byrne and all the folks who helped bring this book from idea to reality.

Introduction

Paint Shop Pro is a powerful yet easy-to-use graphics editor that is also surprisingly affordable. Whether you're creating your own images from scratch, editing clip art, or retouching digital photos, Paint Shop Pro has the tools you need. *Paint Shop Pro 8 Solutions* helps you explore these tools so you can make the most of them and make them work for you.

What You'll Find in This Book

This book shows you what sorts of projects you can undertake with Paint Shop Pro 8, giving you guidance to help you in your own graphics projects. In this book, you'll find:

- ▶ Instruction on using Paint Shop Pro's basic tools and commands
- ▶ Hands-on examples that show you how to use Paint Shop Pro to create handmade images and edit digital photos
- ▶ Tips on how to print images and optimize them for the Web
- ▶ Techniques for using layers, masks, and vectors to create just the right effect

Not every feature of Paint Shop Pro can be covered in a book of this length. Some seldom-used or advanced features, such as Image Arithmetic, are not discussed. But you will find all of the basics and quite a bit more.

This Book's Intended Audience

This book is for graphics hobbyists and business people who have just started out with Paint Shop Pro. It should help anyone who wants to discover how this versatile program can help them create or edit graphics, whether printed or onscreen, photographic or hand-drawn.

Assumptions

This book assumes that you have Paint Shop Pro version 8 and an interest in creating and editing digital images. You may be unsure about what sorts of graphics operations Paint Shop Pro makes available to you, but you want to explore what's there and discover how Paint Shop Pro can help you with your own graphics projects.

Here are a few other assumptions in this book:

- ▶ **You're running Microsoft Windows® 98, NT4 SP6a, 2000, ME, or XP.** Paint Shop Pro is available only for the PC platform. You should also be familiar with how to install and run programs on your PC.

- ▶ **You're familiar with the peripherals used with your computer.** This book will help you use Paint Shop Pro to edit scanned images and digital photos and to print your images. But you will need to be familiar with your particular peripherals (your scanner, digital camera, and printer) and how to install them and use them.
- ▶ **You want to learn.** This book has been written to help you explore the many graphics operations that Paint Shop Pro makes available to you. Working with graphics can sometimes be challenging, but your curiosity and desire to learn will help you meet challenges in your quest for great graphics.

How This Book Is Organized

Paint Shop Pro 8 Solutions is divided into ten chapters and three appendices:

- ▶ **Chapter 1, "Paint Shop Pro 8 Basics."** This chapter gets you started. You'll get acquainted with Paint Shop Pro's workspace and several basic tools and features.
- ▶ **Chapter 2, "The Painting Tools."** Chapter 2 focuses on the Paint Brush, Airbrush, and other tools you use for freehand painting with pixels. You'll look at the Picture Tube tool, which enables you to paint with ready-made pictures, as well as the retouching tools and Clone Brush, which can help you retouch digital photos.
- ▶ **Chapter 3, "The Drawing Tools."** In Chapter 3, you'll learn about the basic drawing tools: the Pen tool and the Preset Shapes tool. You'll see how to draw lines and shapes in raster mode and how to create your own styled lines.
- ▶ **Chapter 4, "Working with Layers and Masks."** In this chapter, you'll learn about the power of layers and masks. Layers let you manipulate part of a complex image while leaving the rest untouched, blend one image into another, and produce many effects that would be difficult or close to impossible without layers. Masks enable you to modify transparency on other layers without actually affecting the data on those layers.
- ▶ **Chapter 5, "Selections."** Being able to isolate parts of an image and modify only that part makes many image-editing tasks easier. This chapter shows you how to do just that, using Paint Shop Pro's selection tools.
- ▶ **Chapter 6, "Vector Solutions."** Drawing with vectors allows you to warp a shape or change its attributes again and again, all without degrading image quality in the least. Discover how vectors can help you create great drawings that you can change easily whenever you like.
- ▶ **Chapter 7, "Text Solutions."** Whether you're creating buttons for a Web site, an illustration for a business report, or a poster for your community festival, you'll need to add text to your images. Learn how Paint Shop Pro's Text tool can help you get the text effects you need.

- ▶ **Chapter 8, “Photo Editing Solutions.”** Now that scanners and digital cameras are becoming more and more affordable, the number of people needing the digital equivalent of a darkroom is on the rise. Paint Shop Pro fits the bill by providing you with a wide range of photo editing tools and filters. In this chapter, you’ll learn how to retouch and crop your photos, remove red-eye, adjust color and contrast, and more.
- ▶ **Chapter 9, “Print Solutions.”** This chapter covers printing with Paint Shop Pro. Print a photo, a set of thumbnails, a greeting card, or whatever you need.
- ▶ **Chapter 10, “Web Graphics Solutions.”** Paint Shop Pro has lots of tools for the Web graphics designer, including built-in Web optimizers, an image slicer, and an image map utility. In this chapter, you’ll learn about these and more.
- ▶ **Appendix A, “Paint Shop Pro 8 Effects.”** Paint Shop Pro 8 has many built-in special effects. This appendix lists them all and provides many examples.
- ▶ **Appendix B, “Paint Shop Photo Album.”** Users of Paint Shop Pro might also be interested in Jasc’s Paint Shop Photo Album. This appendix describes some of this application’s features.
- ▶ **Appendix C, “Resources.”** This appendix lists a few online resources for Paint Shop Pro.

Conventions Used in This Book

The following conventions are used in this book.

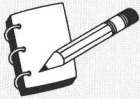
- ▶ All Web page URLs mentioned appear in **boldface**, such as **www.jasc.com**.
- ▶ Hot keys in commands and menu options are shown in **boldface**.
- ▶ In the running text, all HTML tags and attributes appear in full monospace caps, so that the HTML code stands out from the rest of the text. In expanded examples, HTML code is presented in lowercase. (Today’s Web browsers don’t pay attention to case in HTML code. Keep in mind, though, that specifications for HTML coding are being considered that include a preference, if not a requirement, that HTML tags and attributes appear only in lowercase.)

Besides these typographical conventions, this book features the following special displays for different types of important text:



TIP

Text formatted like this offers a helpful tip relevant to the topic discussed in the main text.

**NOTE**

Text formatted like this highlights other interesting or useful information that relates to the topic discussed in the main text.

**CAUTION**

Cautions highlight actions or commands that can make irreversible changes to your files or that can cause other serious problems. Read cautions carefully, since they can help you avoid confusion or loss of work.

Keeping the Book's Content Current

Everyone involved with this book has worked hard to make it complete and accurate. But as we all know, mistakes sometimes find a way of creeping in. If you find any errors or want to make suggestions for future editions, please contact Muska & Lipman Publishing at <http://www.muskalipman.com>.

Contents

1 Paint Shop Pro 8 Basics1

Installing Paint Shop Pro	1
Installing the CD Version	1
Installing the ESD or the Trial Version	1
The Paint Shop Pro Workspace	2
The Tools Toolbar	3
The Menu Bar	3
The Standard Toolbar	4
The Specialty Toolbars	4
The Tool Options Palette	4
The Materials Palette	5
The Overview Window	11
The Layers Palette	12
The Status Bar	13
Other Palettes and Toolbars	14
The Brush Variance Palette	14
The Magnifier	14
The Histogram Window	14
The Effects Toolbar and the Web Toolbar	15
Managing Palettes	15
Floating and Docking Palettes	15
Resizing Palettes and Toolbars	16
Auto Rollup	16
Dialog Boxes	16
Image Basics	18
Opening an Existing Image	18
Creating a New Image	19
Saving an Image	21
Scripts	22
Configuring Paint Shop Pro	23
Customizing Toolbars	23
Customizing Menus	24

Creating Keyboard Shortcuts	25
Saving Workspaces	25
Setting Preferences	26
Getting Help	27
2 The Painting Tools	29
The Paint Brush and Airbrush	29
Selecting Styles and Textures with the Materials Palette	29
Selecting Brush Settings with the Tool Options Palette	31
Brush Variance	34
The Eraser and Background Eraser	37
Flood Fill	38
Other Painting Tools	42
The Retouching Tools	42
The Clone Brush and the Scratch Remover	43
The Scratch Remover	47
The Color Replacer	48
Picture Tubes	49
The Warping Tools	54
The Warp Brush	54
The Deform Family of Tools	56
3 The Drawing Tools	61
The Preset Shapes Tool	61
The Pen Tool	64
Line Segments	66
Point to Point Lines and Curves	67
Freehand Lines and Curves	68
Creating Cutouts	68
Styled Lines	69
4 Working with Layers and Masks	73
Layer Basics	73
Getting Acquainted with Layers	74
Working with Layers	77
Layer Visibility and Protect Transparency	82
Linked Layers	83
Layer Groups	85

Opacity and Blend Modes	86
Merging Layers	88
Blend Ranges	91
Using a Mask	92
What Is a Mask?	93
Creating and Editing Masks	96
Deleting Masks	98
Loading and Saving Masks	99
Examples	99
Creating an Artistic Edge	99
Blending Layers with a Gradient Mask	102
A Painterly Effect using Blend Ranges	105

5 Selections109

Making Selections	109
The Selection Tool	113
The Freehand Selection Tool	114
The Magic Wand	117
Copying and Pasting a Selection	119
Cut and Copy	119
Paste	120
Clear	123
Modifying a Selection	124
Adding to and Subtracting from a Selection	124
Some Selections Menu Options	127
The Modify Submenu	131
Select Similar	131
Select Color Range	132
Inside/Outside Feather and Unfeather	134
Shape Based Antialias and Recover Antialias	134
Remove Specks and Holes	135
Smooth	136
Select Selection Borders	137
Loading and Saving Selections	138
Converting Selections to Masks and Vice Versa	139
Examples	140
A Simple Stained Glass Effect	140
Isolating a Figure with a Selection Converted to a Mask	141

6 Vector Solutions	147
Vector Objects	148
Deforming a Shape	149
Modifying an Object's Properties	151
Object Alignment and Distribution	152
Modifying a Shape	152
Node Editing	153
Changing Node Types	157
Transforming Selected Nodes	157
Making Cutouts with Vectors	158
Example: A Simple Vector Drawing	161
7 Text Solutions	169
Adding Text to an Image	169
Enhancing Text with 3D Effects	174
Warping and Deforming Raster Text	177
Modifying Vector Text	178
Creating Text on a Path	178
Converting Text to Curves	181
Examples	182
Creating a Logo	182
Making Text Stand Out on a Complex Background	184
8 Photo Editing Solutions	187
Overview of Enhance Photo Commands	187
Correcting Lens Distortion	189
Basic Color Correction	191
Histogram Adjustment and Adjust HSL	192
JPEG Artifact Removal and Unsharp Mask	194
Some Other Adjust Menu Commands	195
Blur Filters	195
Sharpness Filters	196
Softness Filters	196
Add/Remove Noise Filters	196
Negative Image	197
Color and Contrast Adjustment	197
Adjustment Layers	200

Cloning, Retouching, and Scratch Removal	201
The Clone Brush	201
The Retouching Tools	203
The Scratch Remover	204
Correcting Perspective	205
Cropping, Resizing, and Rotating	206
Cropping	206
Resizing Images and Layers	207
Flip, Mirror, Rotate, and Straighten	209
Example: Enhancing a Photo	211

9 Print Solutions213

Image Size and Resolution for Printing	213
Choosing the Right Paper	214
Printing an Image	215
Using Paint Shop Pro's Print Layout	216
Printing from the Browser	219
A Note on Printing Services	221
Examples	221
Creating and Printing a Newsletter	221
Creating and Printing a Greeting Card	223

10 Web Graphics Solutions229

What Makes a Graphic Suitable for the Web?	229
Creating Buttons, Bars, and Bullets	230
Handmade Buttons	231
Separator Bars	232
Bullets	233
Creating Background Tiles	234
Optimizing and Previewing Web Graphics	236
JPEG Optimizer	237
GIF Optimizer	239
Creating Transparent GIFs	241
PNG Optimizer	242
Preview in Web Browser	243
Using the Image Mapper	244

Using the Image Slicer	246
Example: Creating a Unified Site	247

A Paint Shop Pro 8 Effects251

Built-in Effects	252
3-D Effects	252
Art Media Effects	253
Artistic Effects	254
Distortion Effects	255
Edge Effects	257
Geometric Effects	258
Illumination Effects	259
Image Effects	260
Reflection Effects	261
Texture Effects	262
User Defined Filters	264
Plug-in Filters	264

B Paint Shop Photo Album267

C Resources269

Paint Shop Pro Tips and Tutorials	269
Plug-in Filters	270
Freeware and Shareware Fonts	270
Newsletters and User Groups	271
Miscellaneous	271

Index	273
-------------	-----

Chapter 1

Paint Shop Pro 8 Basics

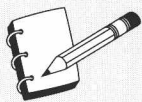
This chapter provides an introduction to Paint Shop Pro's interface and basic features. Even if you're already familiar with earlier versions of Paint Shop Pro, you'll want to take a good look at what's here, because Paint Shop Pro's interface has changed quite a bit between versions 7 and 8.

Installing Paint Shop Pro

Paint Shop Pro 8 is available direct from Jasc Software, Inc. (<http://www.jasc.com>) or from your favorite software vendor. If you acquire Paint Shop Pro from Jasc, you can order the CD version with a printed manual or the downloadable ESD (*Electronic Software Distribution*) version. If you'd rather try before you buy, there's a downloadable trial version available at the Jasc site.

Installing the CD Version

To install the CD version of Paint Shop Pro, place the installation CD in your CD drive. Windows should detect the CD and automatically start the autorun program on the CD. In the autorun window, click Install, which will start Paint Shop Pro's setup program. Follow the installation instructions that then appear.



NOTE

If the autorun program doesn't start when you insert the CD in your CD drive, you can run the autorun program or the setup program by hand. To run the autorun program, use Windows Explorer or My Computer to navigate to the CD, then double-click AUTORUN.EXE. To run the setup program, navigate to the Paint Shop Pro folder on the CD and then double-click SETUP.EXE.

Installing the ESD or the Trial Version

Installing the download versions—the ESD and trial versions—is a little different from installing the CD version:

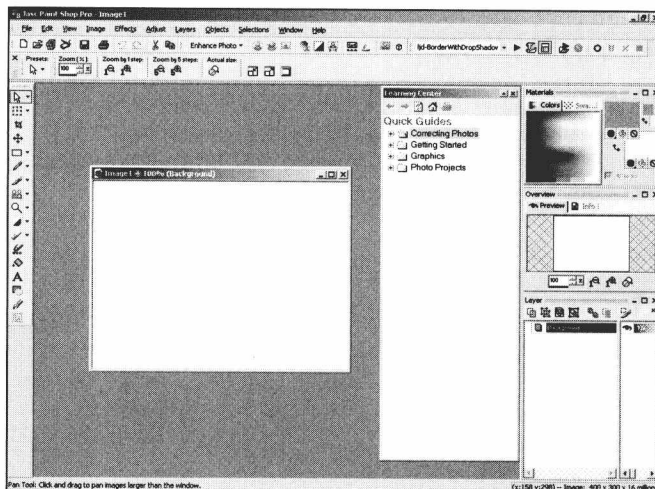
- ▶ Navigate to the folder where you saved the downloaded file.
- ▶ Make a backup copy of the downloaded file and save it to some type of removable media, such as a Zip disk. Keep this backup copy in a safe place.
- ▶ Double-click on the name of the downloaded file to extract the installation files. By default, the installation files will be copied to C:\Program Files\Jasc Software Inc\Setup Files. If the installer doesn't run automatically, navigate to this folder and double-click SETUP.EXE.
- ▶ Follow the installation instructions that appear onscreen.

The Paint Shop Pro Workspace

Paint Shop Pro's workspace, the area in which you do your image editing work, is surrounded by Paint Shop Pro's major palettes and toolbars. Most of the palettes and toolbars are by default docked around the edges of the workspace. These are the Tools toolbar (on the left); the Tool Options palette, the Menu bar, the Standard toolbar and a couple other toolbars (at the top); the Materials palette, the Overview window, and the Layers palette (on the right); and the status bar (at the bottom). Figure 1.1 shows these various toolbars and palettes, along with the Learning Center and an open image. (Icons on some of the palettes and toolbars would be greyed out if no image were open.)

Figure 1.1

The Paint Shop Pro workspace, showing major palettes and toolbars



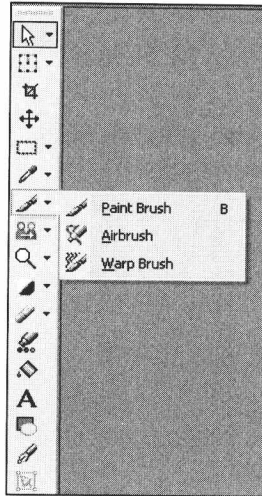
When you first open up Paint Shop Pro, the Learning Center is displayed in the workspace. If you're new to Paint Shop Pro, you should take a look at the various tutorials (or "Quick Guides") available from the Learning Center. If later on you want to hide the Learning Center, click the close button on its title bar. If you want to access the Learning Center again, choose **Help > Learning Center** or press F10.

The Tools Toolbar

The Tools toolbar, which appears by default along the left edge of the workspace, contains all of Paint Shop Pro's image editing and selection tools. (See Figure 1.2.)

Figure 1.2

The Tools toolbar



Some of the icons on the Tools toolbar are for single tools only and some are for a family of tools. Any icon for a family of tools has a small arrow at the right of the icon. To open a flyout for a family of tools, click the arrow for that tool family. Figure 1.2 shows the Tools toolbar with the flyout for the Brushes family open. To select a tool from the flyout, click on that tool in the flyout. To make a tool that is currently displayed on the Tools toolbar the active tool, click its icon.



TIP

Hover the mouse pointer over a tool icon on the Tools toolbar to display a tool tip showing the name of the tool. At the same time, a description of the tool and its function is displayed on the status bar.

The Menu Bar

The Menu bar, which appears at the very top of the workspace, contains menus for accessing Paint Shop Pro commands and operations. As Figure 1.3 shows, the Menu bar includes menus labeled **F**ile, **E**dit, **V**iew, **I**mage, **E**ffects, **A**ddjust, **L**ayers, **O**bjects, **S**elections, **W**indow, and **H**elp.