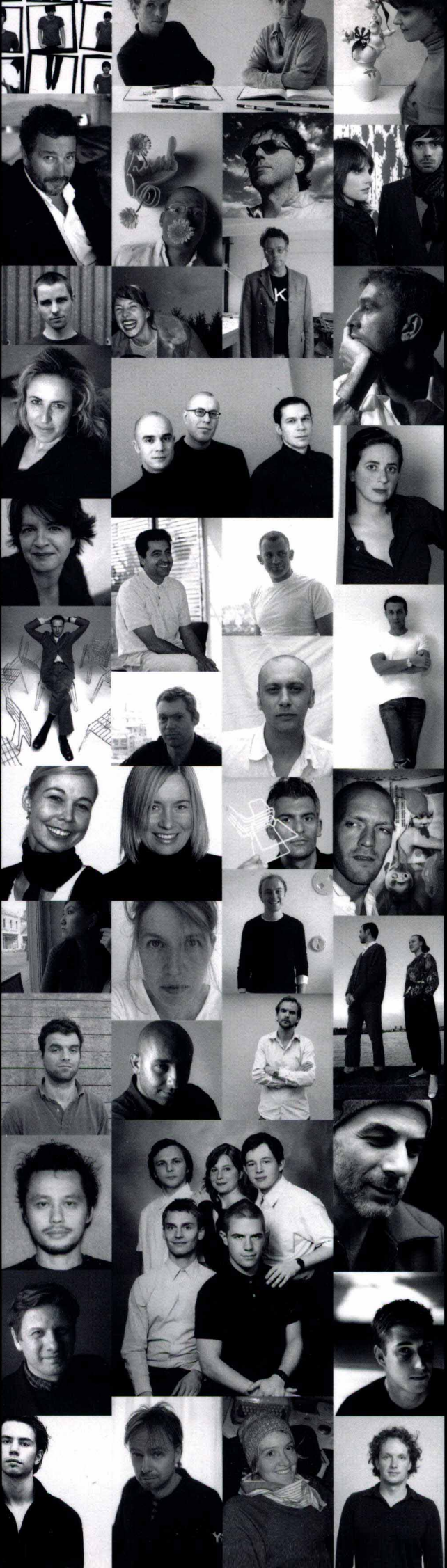


DESIGNERS



Designer's Design

46 remarkable contemporary pioneers
in the field of interior design and their
best works.

Designer's [

All works reproc

Epoch-making explorers for the 21st century

006	STUDIO JOB
016	Piet Hein Eek
022	Maarten Baas
030	Simon Heijdens
034	Arik Levy
044	Yves Béhar
046	Johannes Norlander
050	Jean-Marie Massaud
054	India Mahdavi
058	Eric Gizard
064	Laurent Massaloux
068	Joris Laarman
072	Frank Tjepkema
078	Koichiro Kimura
082	Ineke Hans
086	Nendo
090	Chris Kabel

178	Claesson Koivisto Rune
190	Ronan & Erwan Bouroullec
198	Alfredo Haberli
206	Hella Jongerius
210	Carlo Colombo
216	Tei Syuwa
220	Björn Dahlström
226	Jasper Morrison
232	Philippe Starck
240	Ron Arad
248	Antonio Citterio

148	Column
-----	--------

The design in the times without maesrto
—Kaoro Tashiro

254	INDEX
255	Data Source/Enquiry

Eye-catching new generation of designers

096	COMMITTEE
098	Stuart Haygarth
100	5.5 designers
106	Emiko Oki
108	Wieki Somers
112	Afke Golsteijn
118	Ted Noten
120	Wataru Komachi
124	Pernilla Jansson
126	Design Dessert
130	defyra
132	Monica Förster
138	Thomas Bernstrand
142	Todd Bracher

Epoch-making stars that continue making legends

150	Fernando+Humberto Campapna
154	Tom Dixon
162	Patricia Urquiola
170	Marcel Wanders

Designer's Design

46 remarkable contemporary pioneers
in the field of interior design and their
best works.

Designer's [

All works reproc

Epoch-making explorers for the 21st century

006	STUDIO JOB
016	Piet Hein Eek
022	Maarten Baas
030	Simon Heijdens
034	Arik Levy
044	Yves Béhar
046	Johannes Norlander
050	Jean-Marie Massaud
054	India Mahdavi
058	Eric Gizard
064	Laurent Massaloux
068	Joris Laarman
072	Frank Tjepkema
078	Koichiro Kimura
082	Ineke Hans
086	Nendo
090	Chris Kabel

178	Claesson Koivisto Rune
190	Ronan & Erwan Bouroullec
198	Alfredo Haberli
206	Hella Jongerius
210	Carlo Colombo
216	Tei Syuwa
220	Björn Dahlström
226	Jasper Morrison
232	Philippe Starck
240	Ron Arad
248	Antonio Citterio

148	Column
-----	--------

The design in the times without maesrto
—Kaoro Tashiro

254	INDEX
255	Data Source/Enquiry

Eye-catching new generation of designers

096	COMMITTEE
098	Stuart Haygarth
100	5.5 designers
106	Emiko Oki
108	Wieki Somers
112	Afke Golsteijn
118	Ted Noten
120	Wataru Komachi
124	Pernilla Jansson
126	Design Dessert
130	defyra
132	Monica Förster
138	Thomas Bernstrand
142	Todd Bracher

Epoch-making stars that continue making legends

150	Fernando+Humberto Campapna
154	Tom Dixon
162	Patricia Urquiola
170	Marcel Wanders

Greetings

The 20th century witnessed the flourishing and rapid development of “design”. In those colorful times, people pursued a material life assiduously. Consequently, it brought about the birth of new functions and design successively, which we had never seen before. But such ardent desire would never be satisfied. What people were longing for was the “Times of Design”. The 21st century that we live in inherits the wealth of 20th century. Though enjoying sufficient material means, people always feel slightly bored. Ultimately, it is design that cures us. People would not survive if they could not find the variation and value of surroundings. What is the design pursued in the present times? This question inspired me to write this book. The book illustrates the designers and artists who are active on the interior design scene as well as their works. Through this window, we can obtain a general view of those designers and artists. Their thinking, exploration, mode of expression, and their approach to design, are what we need to understand.

STUDIO JOB

Piet Hein Eek

Maarten Baas

Simon Heijdens

Arik Levy

Yves Béhar

Johannes Norlander

Jean-Marie Massaud

India Mahdavi

Eric Gizard

Laurent Massaloux

Joris Laarman

Frank Tjepkema

Koichiro Kimura

Ineke Hans

nendo

Chris Kabel

Epoch—making explorers for the 21st century

“Never to be limited to the concept of design itself” is an attempt to new approach. That is to say, to make new creation amazing the world. The significance and message conveyed could touch us deeply. These could let us re—discover both the splendid achievement and the flaw of the works in the 20th century. Either the new leaders of 21st century or the core of their design works are all around this theme. Putting aside the 20th century which brought innovation to the field of design, they are creating a new history.



STUDIO JOB

Job Smeets and Nynke Tynagel established the design duo in 1998. Both of them graduated from Eindhoven University. Now they are mainly working in Bellkey and Antwerp.

They are not only the designers from Holland, but also the designers from Europa. As European designers, they are active in extensive fields such as fashion, art and interior design, etc and attract the attention from the whole world.


Their imagination is rich and profound, which is beyond the reach of ordinary people. Their works of art derived from such imagination are imbued with individual appeal. They design unique works, publications, installations, interior and public spaces, which only are their basic designs. They clearly know that they are the treasure of inspiration. What they did is just to select and present the exact ideas which occur to their minds. The peculiar shape and size of their works present an unreal world, which embodies their belief in design. Such designs frame and illustrate the changeful free thoughts.

Starting with unique story and concept, their designs portray the great art in the history with their own manner. Adopting the unrealistic approach from materials and scale, they are continuously conceiving the unprecedented and marvelous designs. They make the real model in their studio, and produce works in limited amount. So that, the art could last for about a hundred years. They will continue to carry on with their concept of international design for design and art.

Art and irony, a group of humorous and charming geniuses of the touch design

STUDIO JOB

Job Smeets: Born 1970 Nynke Tynagel: Born 1977, in Netherlands

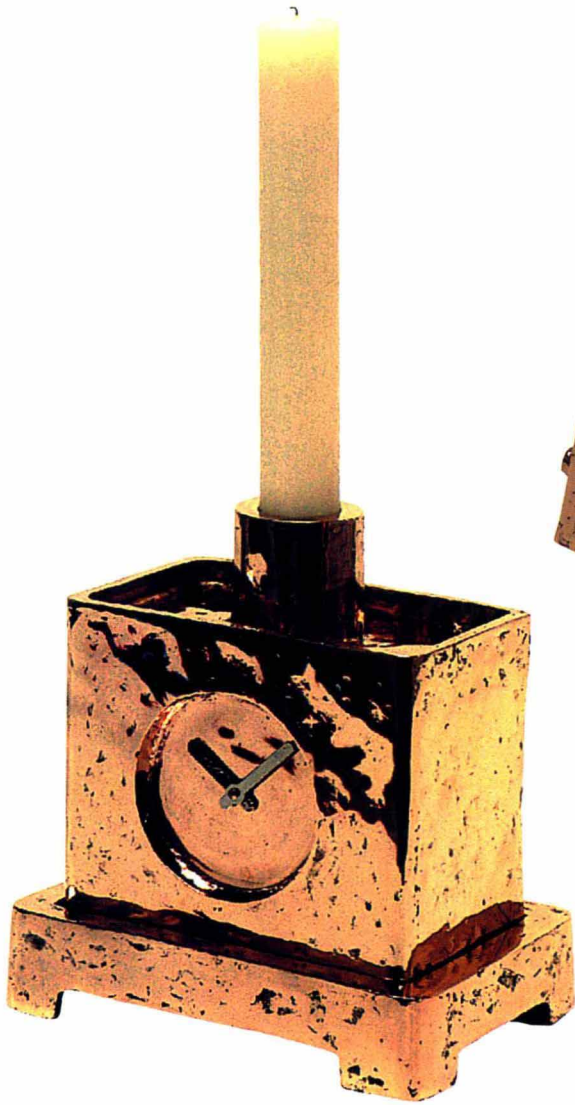


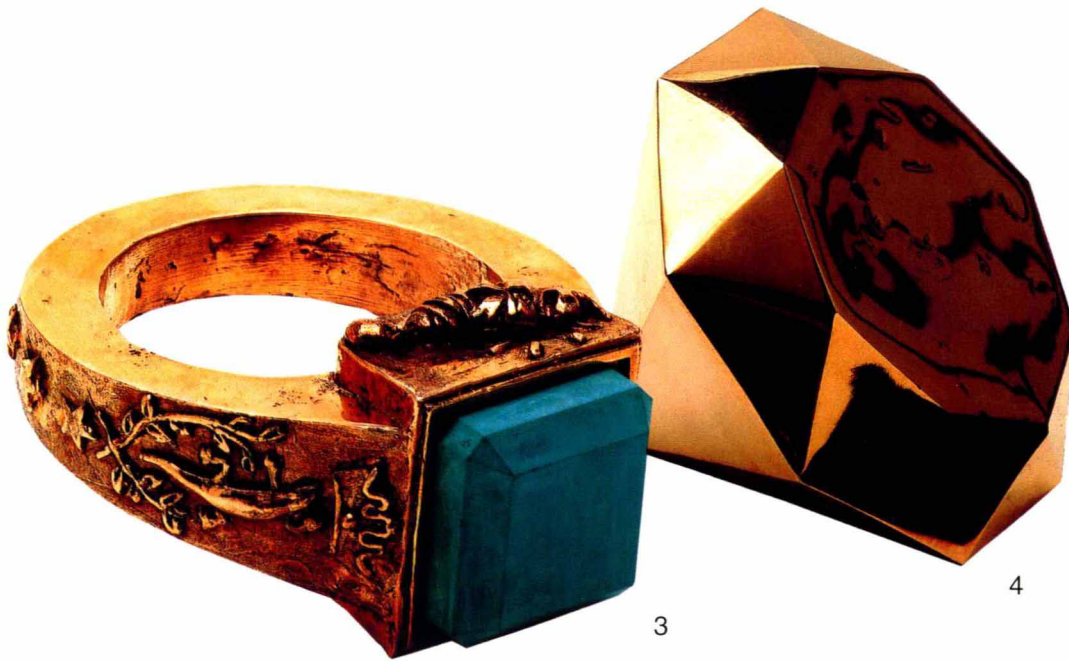
The impact art rises from the matching of the massiness
and the broad-brush of bronze

"Rock Sofa & Chair"

The series of works derived from the concept of rock-digging
The bronze processed with the techniques of polishing and spray-painting, etc
together with the color variation of white and silver.

STUDIO JOB





1. "Containers"

Bronze container. It is quite interesting that the humorous shape combines with the material of superior texture absontantly.

2. "Craft"

This also belongs to the series of bronze craftworks. The objects include clock, wine glass, plant and hammer, etc.

3. "Bronze series - Ring"

The inspiration comes from the hereditary ring of Pope. There is a dead bird on one side and a "Candle man" in the appearance of baby on the other side in the work. As the highlight of the work, the green stone is also made of bronze.

4. "Bronze series - Diamond"

This work is one of the wares which are made based on the designer's personal concept of castle. The diamond is the sole treasure in the castle and the jewelry box is changed into a work of art.

5. "Bronze series - Arrow"

According to the old legend, gold arrow never misses the target. The arrow hanging on the wall is about to fly away from the bowstring.

6. "Bronze series - Knife"

It is the sole weapon in the castle. The bronze sword and axe are molded into works of art.



STUDIOJOB



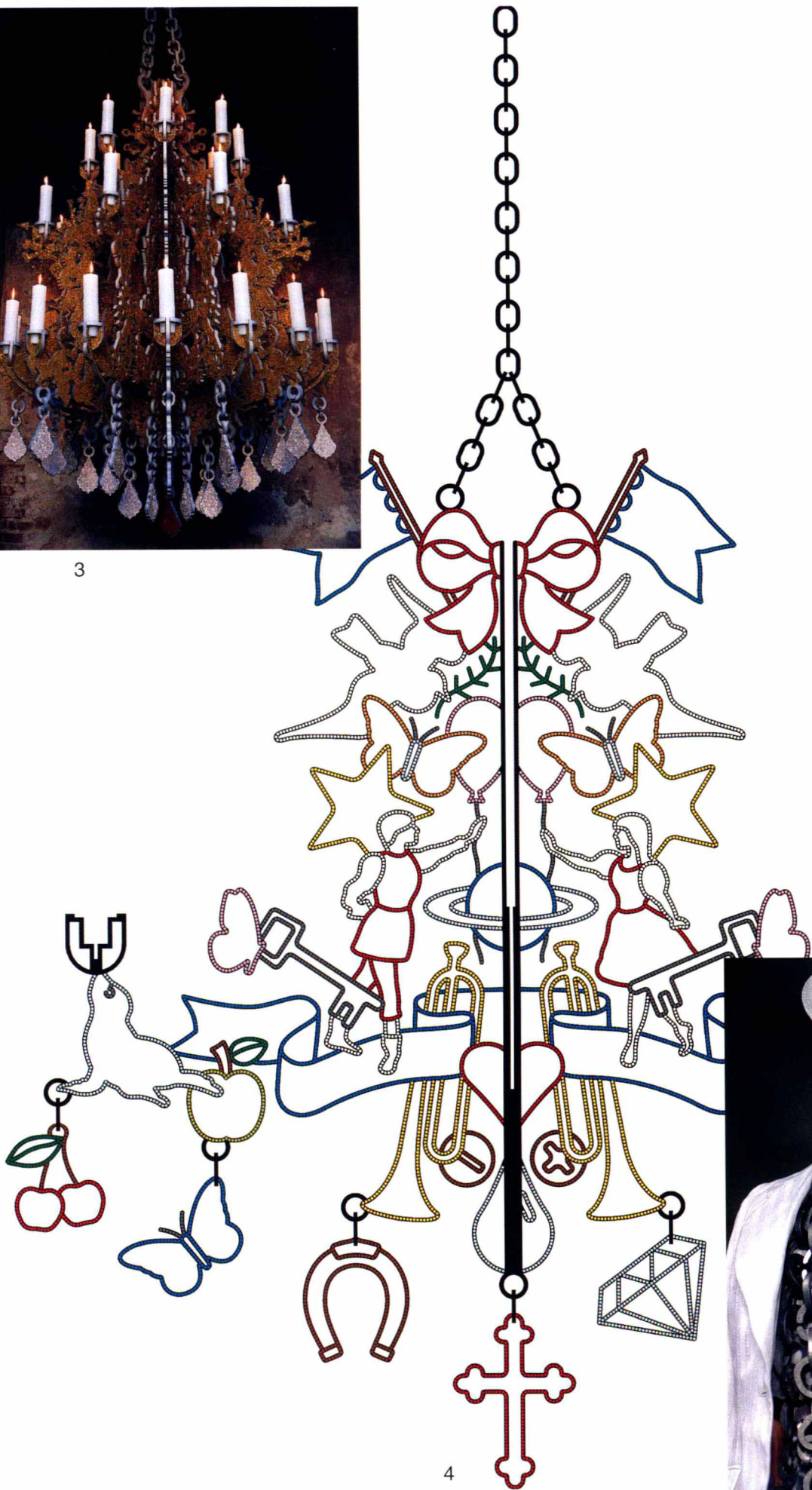
1



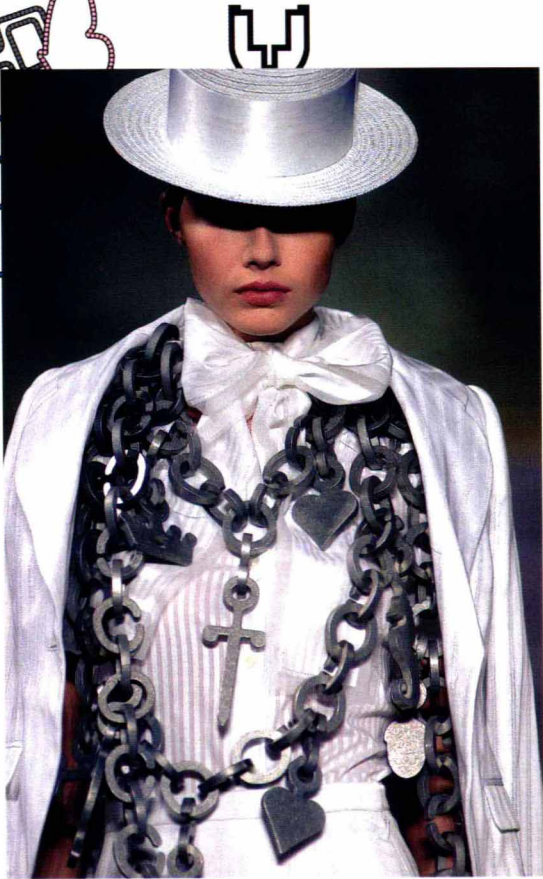
2



3



4



5

1. "Still life hand-painted" for Makkum

Published by the Old Dutch Shop which has been enjoying a great prestige since 16th century, those works were produced by the collection of the inspiration of "still life" and made with the techniques of hand-paint.

2. "Castle Oxidized"

The process of oxidation gives it a unique tactile impression. Actually, this work is a candle stick in the shape of castle.

3. "Charm chandelier"

The chandelier with heavy ornaments flares out beautifully with numerous candle sticks.

4. "Charm chandelier silhouette"

5. "Charm chain" for Viktor & Rolf

The chain charm shown on the fashion show of Viktor & Rolf, Dutch Designer.

STUDIO JOB



1



2



3

1. "Bronze series – Candle man"

This candle man is the one that appeared as a baby in the work of "Ring" on page 9. According to old legend, the clumsy turtle has another identity of man who appears in various works with different shapes.

2. "Bronze series - Clock"

The design of this piece was influenced by the desk clock which was placed on the French fireplace in 1785. It is shaped of bronze in the mould made of paper and pasteboard. The work was designed according to the original desk clock that was collected by the Wallace, a famous company in London. The tails of two monkeys symbolize the Logomark of the Chanel.

3. "Bronze series - Center-piece"

"Candle man" climbs up the side of Centerpiece.



4

4. "Bronze series - Plate"

Initially, this piece is shaped of bronze in waxen mould, which depicts the brambly forest in "overgrown with rose" and the galloping fleet of roaches which were damaging the forest. The tails of monkeys made the shape of logomark fighting against "Pretze". The central pattern shows a robot protecting fruits.