

THE INTERNATIONAL LIBRARY OF
CRITICAL WRITINGS IN ECONOMICS 24

PUBLIC CHOICE
THEORY

———— VOLUME II ————

Charles K. Rowley

Public Choice Theory

Volume II

The Characteristics of Political Equilibrium

Edited by

Charles K. Rowley

*General Director
The Locke Institute
Fairfax, Virginia, US*

and

*Professor of Economics
Center for Study of Public Choice
George Mason University, US*

An Elgar Reference Collection

© Charles K. Rowley 1993. For copyright of individual articles please refer to the Acknowledgements.

All rights reserved. No part of this publication may be reproduced, stored in a retrieval system, or transmitted in any form or by any means, electronic, mechanical, photocopying, recording, or otherwise without the prior permission of the publisher.

Published by
Edward Elgar Publishing Limited
Gower House
Croft Road
Aldershot
Hants GU11 3HR
England

Edward Elgar Publishing Company
Old Post Road
Brookfield
Vermont 05036
USA

A CIP catalogue record for this book is available from the British Library

Library of Congress Cataloging-in-Publication Data

Public choice theory/edited by Charles K. Rowley.

p. cm. — (An Elgar reference collection) (The International
library of critical writings in economics)

Includes bibliographical references.

Contents: v.1. Homo economicus in the political market-place —
v.2. The characteristics of political equilibrium — v.3. The
separation of powers and constitutional political economy.

1. Social choice. I. Rowley, Charles Kershaw. II. Series.
III. Series: The International library of critical writings in
economics.

HB846.8.P833 1993

302'.13—dc20

92-34367
CIP

ISBN 1 85278 160 2 (3 volume set)

Public Choice Theory
Volume II

The International Library of Critical Writings in Economics

Series Editor: Mark Blaug

Professor Emeritus, University of London
Consultant Professor, University of Buckingham
Visiting Professor, University of Exeter

This series is an essential reference source for students, researchers and lecturers in economics. It presents by theme an authoritative selection of the most important articles across the entire spectrum of economics. Each volume has been prepared by a leading specialist who has written an authoritative introduction to the literature included.

A full list of published and future titles in this series is printed at the end of this volume.

Acknowledgements

The editor and publishers wish to thank the following who have kindly given permission for the use of copyright material.

American Economic Association for articles: Anne O. Krueger (1974), 'The Political Economy of the Rent-Seeking Society', *American Economic Review*, **LXIV** (3), 291–303; Sam Peltzman (1985), 'An Economic Interpretation of the History of Congressional Voting in the Twentieth Century', *American Economic Review*, **75**, 656–75; Joseph P. Kalt and Mark A. Zupan (1984), 'Capture and Ideology in the Economic Theory of Politics', *American Economic Review*, **LXXIV**, 279–300.

American Political Science Association for article: Kenneth A. Shepsle and Barry R. Weingast (1987), 'The Institutional Foundations of Committee Power', *American Political Science Review*, **81** (1), 85–104.

Comparative Legislative Research Center for article: Terry M. Moe (1987), 'An Assessment of the Positive Theory of "Congressional Dominance"', *Legislative Studies Quarterly*, **XII** (4), 475–520.

Helbing & Lichtenhahn Verlag AG, Basel and Frankfurt for articles: Gordon Tullock (1971), 'The Cost of Transfers', *Kyklos*, **XXIV**, 629–42; Robert D. Tollison (1982), 'Rent Seeking: A Survey', *Kyklos*, **35** (4), 575–601.

Kluwer Academic Publishers for articles: Michael A. Crew and Charles K. Rowley (1988), 'Toward a Public Choice Theory of Monopoly Regulation', *Public Choice*, **57** (1), 49–67; Gordon Tullock (1981), 'Why So Much Stability', *Public Choice*, **37** (2), 189–202, and an appendix to this article by Geoffrey Brennan, 203–5; Kenneth A. Shepsle and Barry R. Weingast (1981), 'Structure-Induced Equilibrium and Legislative Choice', *Public Choice*, **37** (3), 503–19.

Rand Journal of Economics for articles: Gordon Tullock (1975), 'The Transitional Gains Trap', *Bell Journal of Economics*, **6**, 671–8; George J. Stigler (1971), 'The Theory of Economic Regulation', *Bell Journal of Economics and Management Science*, **2** (1), 3–21.

University of Chicago Press for articles: Richard A. Posner (1975), 'The Social Costs of Monopoly and Regulation', *Journal of Political Economy*, **83** (4), 807–27; Fred S. McChesney (1987), 'Rent Extraction and Rent Creation in the Economic Theory of Regulation', *Journal of Legal Studies*, **XVI** (1), 101–18; Sam Peltzman (1976), 'Toward a More General Theory of Regulation', *Journal of Law and Economics*, **XIX**, 211–40;

Gary Becker (1976), 'Comment', *Journal of Law and Economics*, **XIX**, 245–8; Sam Peltzman (1984), 'Constituent Interest and Congressional Voting', *Journal of Law and Economics*, **XXVII** (1), 181–210; James B. Kau and Paul H. Rubin (1979), 'Self-Interest, Ideology and Logrolling in Congressional Voting', *Journal of Law and Economics*, **XXII** (2), 365–84; George J. Stigler (1976), 'The Sizes of Legislatures', *Journal of Legal Studies*, **V** (1), 17–34; Barry R. Weingast and William J. Marshall (1988), 'The Industrial Organization of Congress; or, Why Legislatures, Like Firms, Are Not Organized as Markets', *Journal of Political Economy*, **96** (1), 132–63.

Virginia Law Review Association and Fred B. Rothman & Company for article: Robert D. Tollison (1988), 'Public Choice and Legislation', *Virginia Law Review*, **74**, 339–71.

Western Economic Association International for articles: Gordon Tullock (1967), 'The Welfare Costs of Tariffs, Monopolies and Theft', *Western Economic Journal*, **V**, 224–32; Douglas Nelson and Eugene Silberberg (1987), 'Ideology and Legislator Shirking', *Economic Inquiry*, **XXV**, 15–25.

Every effort has been made to trace all the copyright holders but if any have been inadvertently overlooked the publishers will be pleased to make the necessary arrangement at the first opportunity.

The publishers wish to thank the library of the London School of Economics and Political Science, The Alfred Marshall Library, Cambridge University, and the Photographic Unit of the University of London Library for their assistance in obtaining these articles.

Contents

Acknowledgements

vii

An introduction to all volumes appears in Volume I.

PART I THE RENT-SEEKING INSIGHT

1. Gordon Tullock (1967), 'The Welfare Costs of Tariffs, Monopolies, and Theft', *Western Economic Journal*, **V**, 224–32 3
2. Gordon Tullock (1971), 'The Cost of Transfers', *Kyklos*, **XXIV**, 629–42 12
3. Anne O. Krueger (1974), 'The Political Economy of the Rent-Seeking Society', *American Economic Review*, **LXIV** (3), June, 291–303 26
4. Richard A. Posner (1975), 'The Social Costs of Monopoly and Regulation', *Journal of Political Economy*, **83** (4), August, 807–27 39
5. Gordon Tullock (1975), 'The Transitional Gains Trap', *Bell Journal of Economics*, **6** (2), Autumn, 671–8 60
6. Robert D. Tollison (1982), 'Rent Seeking: A Survey', *Kyklos*, **35** (4), 575–601 68
7. Fred S. McChesney (1987), 'Rent Extraction and Rent Creation in the Economic Theory of Regulation', *Journal of Legal Studies*, **XVI** (1), January, 101–18 95

PART II THE LEGISLATURE

8. George J. Stigler (1971), 'The Theory of Economic Regulation', *Bell Journal of Economics and Management Science*, **2** (1), Spring, 3–21 115
9. Sam Peltzman (1976), 'Toward a More General Theory of Regulation', *Journal of Law and Economics*, **XIX** (2), August, 211–40 134
10. Gary Becker (1976), 'Comment', *Journal of Law and Economics*, **XIX** (2), August, 245–8 164
11. Sam Peltzman (1985), 'An Economic Interpretation of the History of Congressional Voting in the Twentieth Century', *American Economic Review*, **75** (4), 656–75 168
12. Sam Peltzman (1984), 'Constituent Interest and Congressional Voting', *Journal of Law and Economics*, **XXVII** (1), April, 181–210 188

13. James B. Kau and Paul H. Rubin (1979), 'Self-Interest, Ideology, and Logrolling in Congressional Voting', *Journal of Law and Economics*, **XXII** (2), October, 365–84 218
14. Joseph P. Kalt and Mark A. Zupan (1984), 'Capture and Ideology in the Economic Theory of Politics', *American Economic Review*, **LXXIV** (3), June, 279–300 238
15. Douglas Nelson and Eugene Silberberg (1987), 'Ideology and Legislator Shirking', *Economic Inquiry*, **XXV**, January, 15–25 260
16. George J. Stigler (1976), 'The Sizes of Legislatures', *Journal of Legal Studies*, **V** (1), January, 17–34 271
17. Robert D. Tollison (1988), 'Public Choice and Legislation', *Virginia Law Review*, **74**, 339–71 289
18. Michael A. Crew and Charles K. Rowley (1988), 'Toward a Public Choice Theory of Monopoly Regulation', *Public Choice*, **57** (1), April, 49–67 322

PART III THE DETERMINANTS OF LEGISLATIVE EQUILIBRIUM

19. Gordon Tullock (1981), 'Why So Much Stability', *Public Choice*, **37** (2), 189–202, Appendix by Geoffrey Brennan, 203–5 343
20. Kenneth A. Shepsle and Barry R. Weingast (1981), 'Structure-Induced Equilibrium and Legislative Choice', *Public Choice*, **37** (3), 503–19 360
21. Terry M. Moe (1987), 'An Assessment of the Positive Theory of "Congressional Dominance"', *Legislative Studies Quarterly*, **XII** (4), November, 475–520 377
22. Kenneth A. Shepsle and Barry R. Weingast (1987), 'The Institutional Foundations of Committee Power', *American Political Science Review*, **81** (1), March, 85–104 423
23. Barry R. Weingast and William J. Marshall (1988), 'The Industrial Organization of Congress; or, Why Legislatures, Like Firms, Are Not Organized as Markets', *Journal of Political Economy*, **96** (1), 132–63 443

Part I
The Rent-Seeking Insight

[1]

THE WELFARE COSTS OF TARIFFS, MONOPOLIES, AND THEFT

GORDON TULLOCK

RICE UNIVERSITY

In recent years a considerable number of studies have been published that purport to measure the welfare costs of monopolies and tariffs.¹ The results have uniformly shown very small costs for practices that economists normally deplore. This led Mundell to comment in 1962 that "Unless there is a thorough theoretical re-examination of the validity of the tools upon which these studies are founded . . . someone will inevitably draw the conclusion that economics has ceased to be important."² Judging from conversations with graduate students, a number of younger economists are in fact drawing the conclusion that tariffs and monopolies are not of much importance. This view is now beginning to appear in the literature. On the basis of these measurements Professor Harvey Leibenstein has argued "Microeconomic theory focuses on allocative efficiency to the exclusion of other types of efficiencies that, in fact, are much more significant in many instances."³

It is my purpose to take the other route suggested by Mundell and demonstrate that the "tools on which these studies are founded" produce an underestimation of the welfare costs of tariffs and monopolies. The classical economists were not concerning themselves with trifles when they argued against tariffs, and the Department of Justice is not dealing with a miniscule problem in its attacks on monopoly.

STATICS

The present method for measuring these costs was pioneered by Professor Harberger.⁴ Let us, therefore, begin with a very simple use of his diagram to analyze a tariff. Figure 1 shows a commodity that can be produced

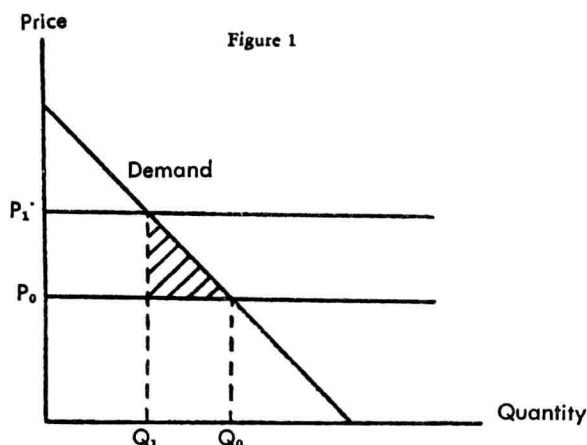
¹These studies are conveniently listed with a useful table of the welfare losses computed in each in Harvey Leibenstein, "Allocative Efficiency vs. 'X-Efficiency,'" *Am. Econ. Rev.*, June 1966, 56, 392-415.

²R. A. Mundell, Review of L. H. Janssen, *Free Trade, Protection and Customs Union*, *Am. Econ. Rev.*, June 1962, 52, 622.

³*Op. cit.*, p. 392. In this article Leibenstein consistently uses the phrase "allocative efficiency" to refer solely to the absence of tariffs and monopolies.

⁴A. C. Harberger, "Using the Resources at Hand More Effectively," *Am. Econ. Rev.*, May 1959, 49, 134-46. It should be noted that Harberger suggested the method for the measurement of the welfare costs of monopoly, but its extension to cover tariffs was the work of other scholars. The more careful scholars who have measured the welfare costs of tariffs have not all used this very simple application of Harberger's method, but a method such as illustrated in Figure 2. I have chosen to begin with this method of measurement partly because it simplifies the exposition and partly because this procedure is the "conventional wisdom" on the matter. (Cf. Leibenstein, *op. cit.*)

domestically at the constant cost of P_1 and imported at P_0 . With the given demand and no tariff Q_0 units will be purchased at a price of P_0 . If a prohibitive tariff is imposed Q_1 units will be bought at a price of P_1 . The increase in price, it is argued, is merely a transfer from some members of the community to others, and the only welfare loss is consequently the shaded triangle. The studies purporting to measure the welfare costs of tariffs have simply computed the value of this triangle. From the geometry it is fairly obvious that the amount would normally be small.



There are a considerable number of costs that are ignored by this procedure. As a starter, collection of a tariff involves expenditure on customs inspectors, etc., who do the actual collection and coast guards who prevent smuggling. Further, customs brokers are normally hired by the shipper to expedite the movement of their goods through customs.⁵ Normally we pay little attention to collections costs because they are small, but in this case they may well be larger than the welfare triangle which is also small. Thus by simply adding in collection costs we significantly increase the "social cost" of the tariff.

For a more significant criticism of this method of measuring the welfare cost let us apply the procedure to a standard excise tax instead of a tariff. Assume that Figure 1 shows a constant supply cost and a declining demand for some commodity in some country. Q_0 units are bought at a price, P_0 . Now suppose that a tax is imposed, raising the price to P_1 , and reducing sales to Q_1 . The welfare cost of this tax is measured by the shaded triangle. But suppose further, that the revenues raised by this tax are completely wasted, building tunnels, for example, which go nowhere. Now the social

⁵Strictly speaking, the customs brokerage should be added on to the tax thus producing a larger welfare triangle.

cost of the total package of tax and wasteful expenditure is the welfare triangle plus the total tax revenue, or the trapezoid bounded by the lines showing cost, the cost-plus-tax, and the demand function. The people buying the product pay more than the cost, but no one benefits from the expenditure.⁶ The funds are not transferred because no one benefits from the existence of the tax. The whole economy is poorer not just by the triangle, but by the whole amount of wasted resources.

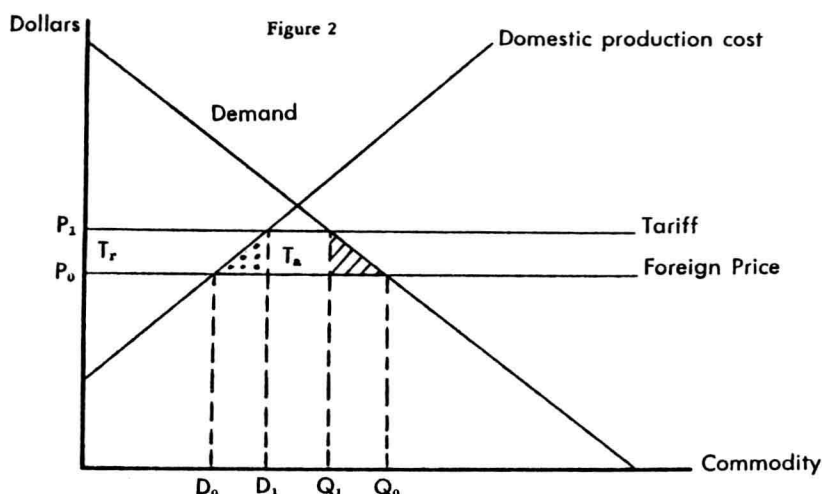
The tariff involves a similar waste of resources and consequently its social cost cannot be measured simply by the welfare triangle. Figure 1 can also be used to show the foreign and domestic costs of some type of good and the national demand for it. Since domestic cost is higher than the (delivered) cost of the foreign good, none would be produced domestically in the absence of a tariff. Q_0 units would be imported and consumed at a price shown by P_0 . The country now puts on a prohibitive tariff and the higher cost domestic production takes over the complete market. Q_1 units are sold at P_1 . The welfare triangle has been used to measure the welfare cost of this operation.⁷ The argument for this procedure is, essentially, that the higher prices paid by the consumers represent a transfer payment, not a real loss to the economy. But who receives this transfer? The owners of the resources now engaged in inefficiently producing the commodity receive no more than they would have received had the tariff never been introduced and they had been employed in other industries.⁸ These resources, however, are being inefficiently utilized, and the rectangle between P_1 and P_0 and bounded by the vertical axis and Q_1 measures the social cost of this waste. Thus the total welfare cost of the tariff is the triangle plus the much larger rectangle to its left.

The situation is identical to that which would arise if the government required an established domestic industry to abandon an efficient method of production and adopt an inefficient. This could be graphed on the same diagram, and it would be generally agreed that the welfare loss would not be just the welfare triangle, but would also include the inefficient use of resources required by the governmental regulation shown in the rectangle to the left of the triangle. Since a tariff shifting production from the production of export goods to import-replacement goods where the country has a comparative disadvantage is, in fact, a governmental requirement that the goods be obtained in an inefficient manner, the cases are identical. The cost of a protective tariff is the triangle plus the difference between domestic cost of production and the price at which the goods could be purchased abroad.

⁶The government action might slightly increase the rents on the resources used to build the tunnel, and thus the owners of specialized resources might benefit slightly, but clearly this is a very trivial effect.

⁷Tibor Scitovsky, *Economic Theory and Western European Integration*, Stanford 1958.

⁸There might be sizable but temporary rents to the firstcomers when the industry was first established.



Let us, however, consider the situation in which there is some domestic production before the imposition of a tariff. Figure 2 shows a commodity part of the consumption of which is imported and part produced domestically. The supply elasticity of the commodity from foreign sources is assumed infinite, but domestic production is carried on in conditions of increasing costs. Without the tariff, the price is P_0 , domestic producers turn out D_0 units and $Q_0 - D_0$ units are imported to make up the total consumption of Q_0 . Suppose now, that Mr. Gladstone is prime minister and imposes a tariff on imports and an excise tax of the same amount on domestic production. With the new price, P_1 , consumers will want only Q_1 units, and the shaded triangle measures the excess burden. Domestic production will remain D_0 , but imports will shrink from $Q_0 - D_0$ to $Q_1 - D_0$. The government will receive a tax revenue equivalent to the entire rectangle bounded by the two price lines, the vertical axis and Q_1 .

Let us now change our example by assuming that the domestic excise tax is repealed, so that we have only a protective tariff. Domestic consumption and price would remain the same, but domestic production would expand to D_1 and imports would shrink accordingly. There would be an inefficient use of resources in producing things which would be better imported represented by the dotted triangle. Governmental revenues would shrink to the rectangle marked T_a and the owners of the resources in the domestic industry would receive an amount of resources equal to the area of the trapezoid T_r .⁹ Clearly the social cost of the tariff is not just the shaded triangle, but also the dotted triangle which shows a net waste of resources in inefficient production.

⁹See J. Wemelsfelder, "The Short Term Effect of the Lowering of Import Duties in Germany," *Econ. Jour.*, March 1960, 70, 94-104.

DYNAMICS: THE COST OF TRANSFERS

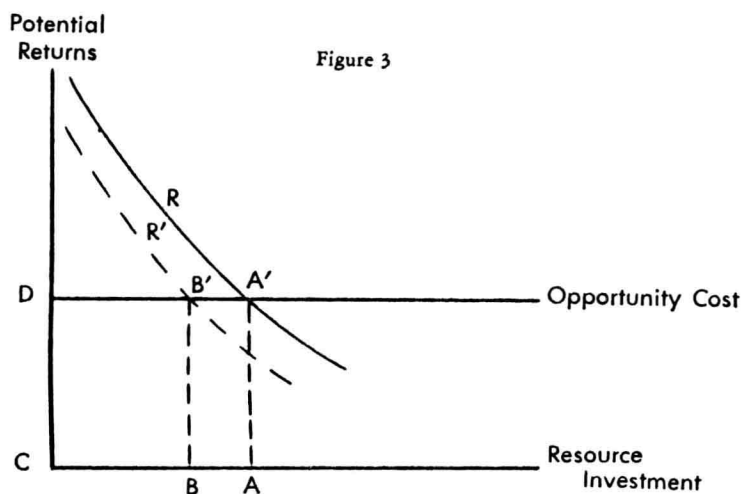
The trapezoid T_r , however, would appear to be a pure transfer, and hence not to be included in the computation of the cost of the tariff. Strictly speaking this is so, but looking at the matter dynamically, there is another social cost involved, and its magnitude is a function of the size of this transfer trapezoid. Generally governments do not impose protective tariffs on their own. They have to be lobbied or pressured into doing so by the expenditure of resources in political activity. One would anticipate that the domestic producers would invest resources in lobbying for the tariff until the marginal return on the last dollar so spent was equal to its likely return producing the transfer. There might also be other interests trying to prevent the transfer and putting resources into influencing the government in the other direction. These expenditures, which may simply offset each other to some extent, are purely wasteful from the standpoint of society as a whole; they are spent not in increasing wealth, but in attempts to transfer or resist transfer of wealth. I can suggest no way of measuring these expenditures, but the potential returns are large, and it would be quite surprising if the investment was not also sizable.

Monopolies involve costs of a somewhat similar nature, and it follows that I will not be able to produce a method to measure their social costs. I will, however, be able to demonstrate that the welfare triangle method greatly underestimates these costs. The argument is customarily explained with the aid of a figure like Figure 1. The monopolist charges the monopoly price P_1 instead of the cost P_0 for the commodity, and consumption is reduced from Q_0 to Q_1 . The welfare triangle is a clear loss to the community but the rectangle to its left is merely a transfer from the consumers to the owners of the monopoly. We may object to the monopolist getting rich at the expense of the rest of us, but this is not a reduction in the national product.

In order to demonstrate that this line of reasoning ignores important costs, I should like to take a detour through the economics of theft.¹⁰ Theft, of course, is a pure transfer, and therefore might be assumed to have no welfare effects at all. Like a lump sum tax, it produces no welfare triangle at all, and hence would show a zero social cost if measured by the Harberger method. This would, of course, be incorrect. In spite of the fact that it involves only transfers, the existence of theft has very substantial welfare costs. Our laws against theft do not deal with a trivial and/or unimportant problem any more than our laws against monopoly.

¹⁰The economics of illegal activities is an underdeveloped area, but Harold Demsetz discusses the subject briefly in "The Exchange and Enforcement of Property Rights," *Jour. of Law and Econ.*, October 1964, 7, 11-26. J. Randolph Norsworthy's Doctoral Dissertation, *A Theory of Tax Evasion and Collection*, Virginia, 1966, is a more comprehensive examination of one type of illegal activity. Two unpublished items have been circulated among a few scholars. Gary Becker's "A Theory of Government Punishments and Rewards," and my own *Law and Morals*, the unfinished manuscript of a book which I began four years ago and which has languished in draft form for almost all of those four years.

Figure 3 shows the situation confronting the potential thief. On the horizontal axis is shown the quantity of effort and capital (burglars' tools, etc.) he might invest in a career of crime. On the vertical axis are shown potential returns. The "opportunity cost" line shows the returns he could get for the same investment of work and material in other occupations. It is assumed to be constant. Let us begin by assuming that taking another's property is not illegal. Under these circumstances the returns on various amounts of investment in the activity are shown by line R . The potential thieves would invest the quantity of resources shown at A in theft, the cost to him would be the rectangle $AA'DC$, and his net return on the investment would be the triangular area above $A'D$.



The situation of a person who wished to guard his own assets, who might, of course, be the thief hoping to hold onto his loot, may also be shown on Figure 3. On the horizontal axis are shown the resources invested in loss minimizing activities.¹¹ The cost of each unit of resources put to this use is shown by the horizontal opportunity line, and the savings are on the vertical axis. The line R now shows the returns in the form of savings for each unit of "theft prevention." The total amount of resources invested would again be A .

The two situations are interrelated by more than the fact that they can be shown on the same diagram. The height of the R curve for the thief would depend upon the amount of resources invested by other members of the community in locks and other protections. Similarly, the individual in considering how many locks to buy would find that his R curve

¹¹The word "activities" may be misleading. One way of minimizing loss by theft is to have little or nothing to steal. In a world in which theft was legal we could expect this fact to lead to a reduction in productive activities and a great expansion in leisure.