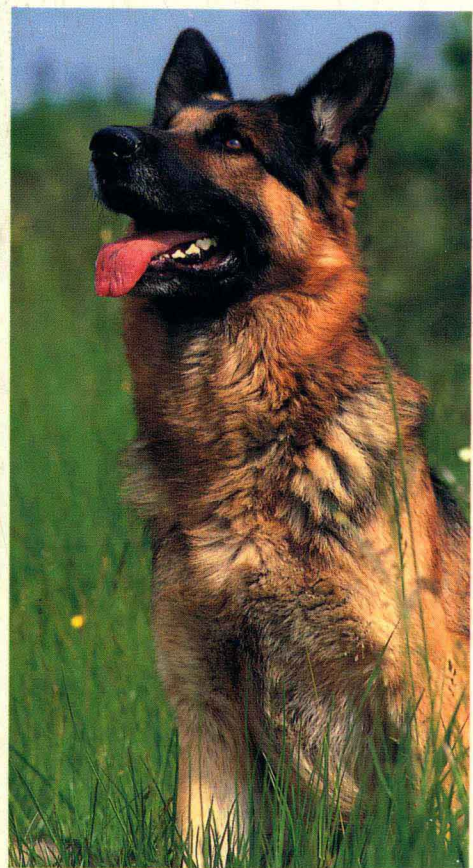




1001 IMAGES OF DOGS



1001

IMAGES OF

DOGS



**TIGER BOOKS INTERNATIONAL
LONDON**

CONTENTS

<i>HOUSE PETS</i>	<i>Pages 4-19</i>
<i>SHEEPDOGS</i>	<i>pages 20-33</i>
<i>HOUNDS</i>	<i>pages 34-43</i>
<i>TERRIERS</i>	<i>pages 44-57</i>
<i>SLED DOGS</i>	<i>pages 58-65</i>
<i>GUNDOGS</i>	<i>pages 66-79</i>
<i>WATCHDOGS</i>	<i>pages 80-91</i>
<i>HUNTING DOGS</i>	<i>pages 92-107</i>
<i>DOGS FOR THE HANDICAPPED, RESCUE DOGS & GUARD DOGS</i>	<i>pages 108-117</i>
<i>AMUSING DOGS</i>	<i>pages 118-125</i>
<i>INDEX</i>	<i>pages 126-127</i>

2898

This edition published 1992 by
Tiger Books International PLC, London
© 1992 Colour Library Books Ltd, Godalming, Surrey
Printed and bound in Singapore
All rights reserved
ISBN 1-85501-234-0

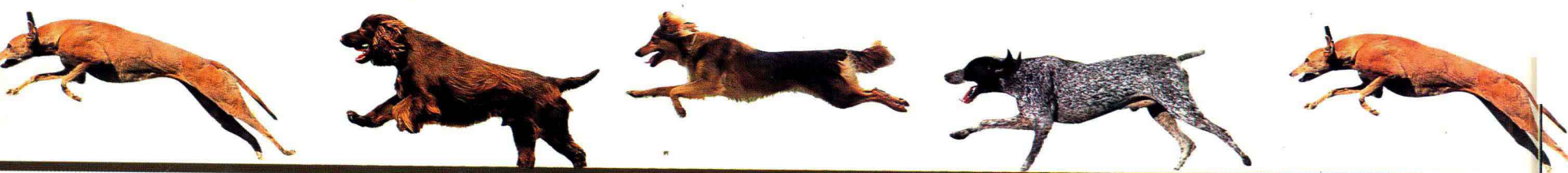


CONTENTS

<i>HOUSE PETS</i>	<i>Pages 4-19</i>
<i>SHEEPDOGS</i>	<i>pages 20-33</i>
<i>HOUNDS</i>	<i>pages 34-43</i>
<i>TERRIERS</i>	<i>pages 44-57</i>
<i>SLED DOGS</i>	<i>pages 58-65</i>
<i>GUNDOGS</i>	<i>pages 66-79</i>
<i>WATCHDOGS</i>	<i>pages 80-91</i>
<i>HUNTING DOGS</i>	<i>pages 92-107</i>
<i>DOGS FOR THE HANDICAPPED, RESCUE DOGS & GUARD DOGS</i>	<i>pages 108-117</i>
<i>AMUSING DOGS</i>	<i>pages 118-125</i>
<i>INDEX</i>	<i>pages 126-127</i>

2898

This edition published 1992 by
Tiger Books International PLC, London
© 1992 Colour Library Books Ltd, Godalming, Surrey
Printed and bound in Singapore
All rights reserved
ISBN 1-85501-234-0



1001 IMAGES OF DOGS



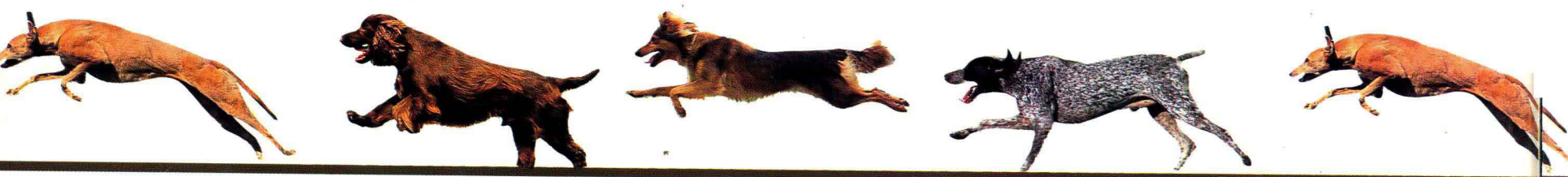
**TIGER BOOKS INTERNATIONAL
LONDON**

CONTENTS

<i>HOUSE PETS</i>	<i>Pages 4-19</i>
<i>SHEEPDOGS</i>	<i>pages 20-33</i>
<i>HOUNDS</i>	<i>pages 34-43</i>
<i>TERRIERS</i>	<i>pages 44-57</i>
<i>SLED DOGS</i>	<i>pages 58-65</i>
<i>GUNDOGS</i>	<i>pages 66-79</i>
<i>WATCHDOGS</i>	<i>pages 80-91</i>
<i>HUNTING DOGS</i>	<i>pages 92-107</i>
<i>DOGS FOR THE HANDICAPPED, RESCUE DOGS & GUARD DOGS</i>	<i>pages 108-117</i>
<i>AMUSING DOGS</i>	<i>pages 118-125</i>
<i>INDEX</i>	<i>pages 126-127</i>

2898

This edition published 1992 by
Tiger Books International PLC, London
© 1992 Colour Library Books Ltd, Godalming, Surrey
Printed and bound in Singapore
All rights reserved
ISBN 1-85501-234-0



INTRODUCTION

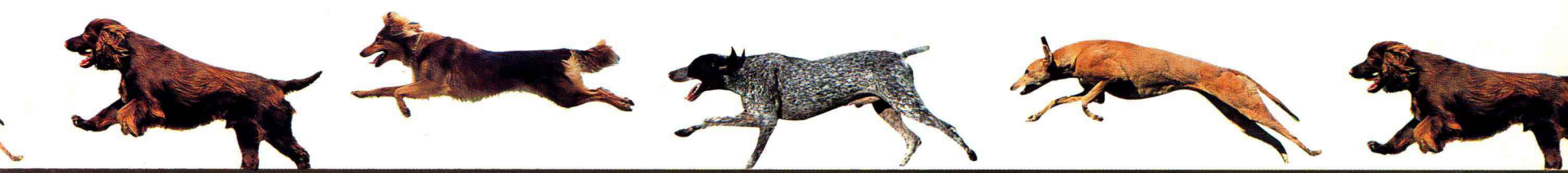
A great deal has been written about the dog, for centuries Man's "best friend." However, the origins of this relationship remain an enigma to this day. The dog is an animal which occupies a unique and privileged place in our lives, as friend, helper and protector, and with no other animal has such a relationship ever existed.

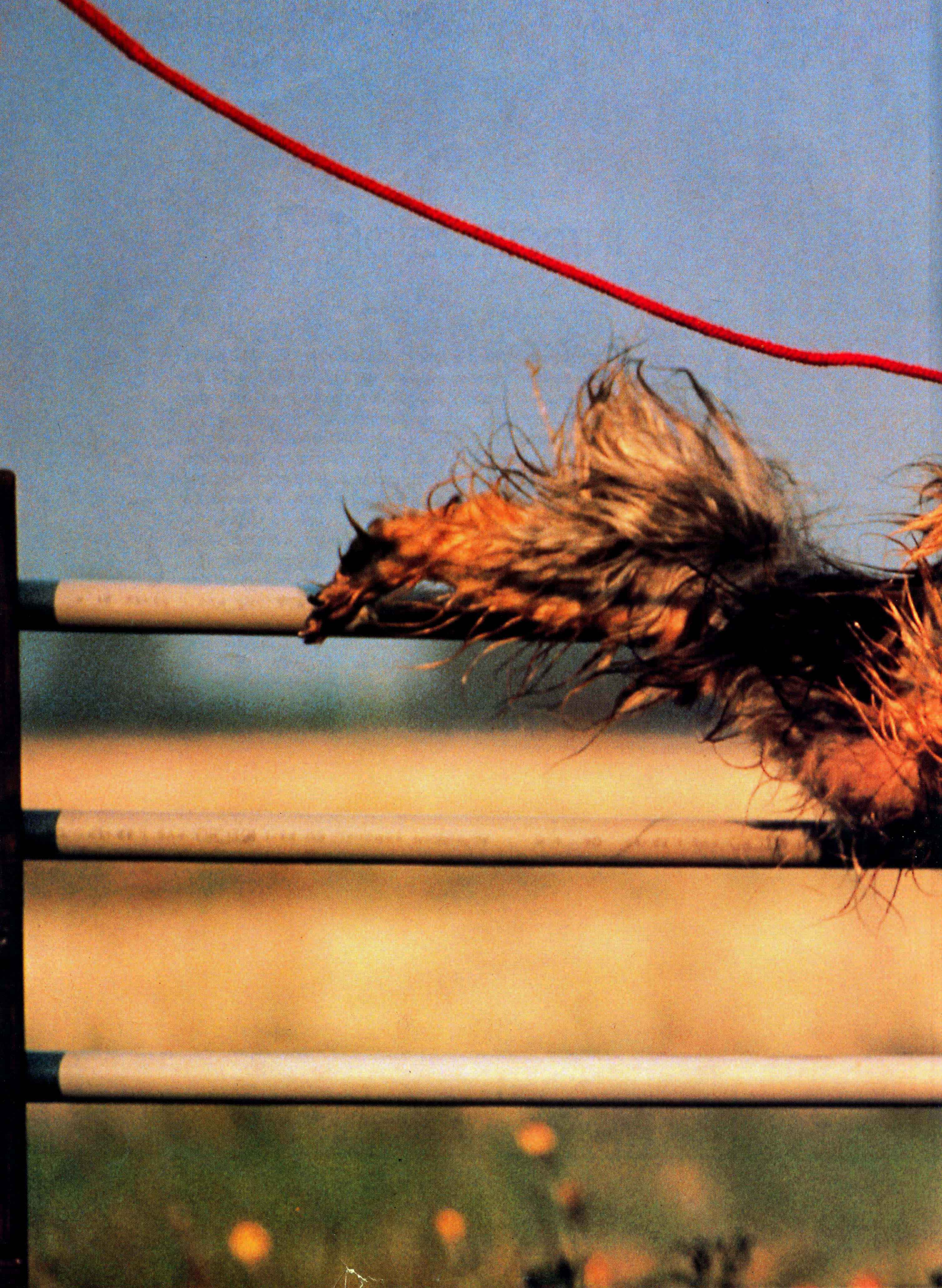
This is a book for dog lovers. Though most of us can only own one or two at best, this remarkable new book allows us to enjoy a great number of them: 1,000 pictures of dogs of every conceivable type: pet dogs, solitary dogs, pack dogs, family dogs, big and small dogs, affectionate and aggressive dogs, puppies and old dogs, aristocrats and mongrels; all caught by the camera at a special moment in time.

International in its approach, about a hundred breeds from the major groups are represented here: sheepdogs, house pets, terriers and hounds, hunting dogs, guard dogs and working dogs, including many which you may never have seen before. And, of course, the magnificent dogs which help the handicapped and take care of us are here, too.

Above all this is a picture book to be enjoyed. The concise text is an addition to the main object of the book, in which the pictures tell the story. We leave it to your imagination to interpret them; with a little help from the descriptions, history and anecdotes about each breed.

This book may help you find the dog that is right for you, regardless of its pedigree. Catching a glimpse of the unusual, as well as the more normal lives of the dogs in this book, may well be your introduction to a companion who will enrich your life. Along the way it will provide a lifetime of pleasurable browsing for dog lovers everywhere.





HOUSE PETS



BASENJI • CHIHUAHUA YORKSHIRE TERRIER CAVALIER KING CHARLES SPANIEL

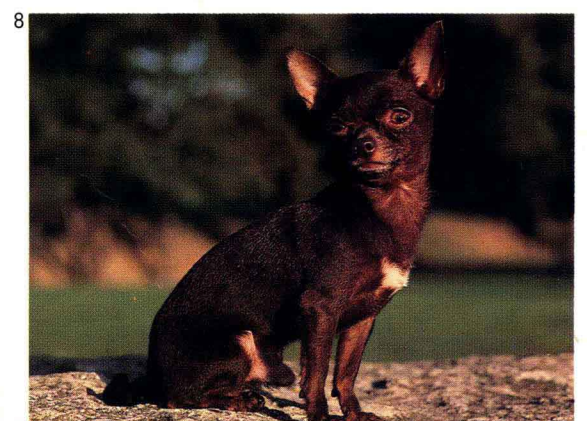
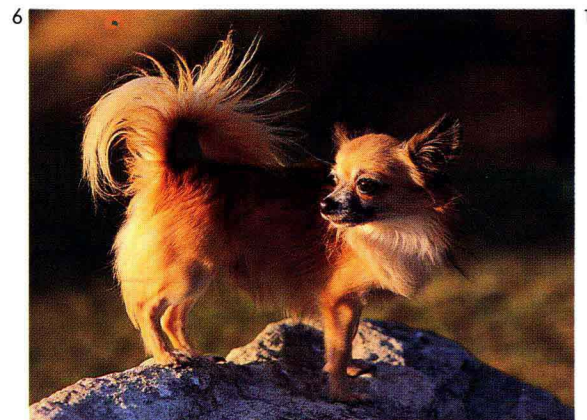
The origins of the **Basenji**, which comes from South Africa, go back into antiquity. It is also known as the Congo dog. It was used in Africa for hunting and as a watchdog. It reached the United States in 1941. With its calm, affectionate temperament, it is today best known as a pet dog. An unusual feature of this breed is that it does not bark like other dogs but makes a soft, yodelling call.

The **Chihuahua** has the distinction – and handicap – of being the smallest dog in the world. It was first registered in the United States in 1904, and its name comes from the province of Mexico where it originated. The Aztecs worshipped it and also considered it a delicacy on the table.

Its huge ears and alert eyes give the impression that it is constantly watchful. Never still, it compensates for its small size with a strident voice which it makes sure is always heard – sometimes unnecessarily! Unable to attack larger dogs or other hazards, it has a highly developed sense of danger. Despite its puny appearance, the chihuahua is a robust little dog which has adapted well to all climates. This pocket sized dog is affectionate, faithful and possessive. It hates to be left alone and, intelligent and cunning, it can put on an air of helplessness. Its size destined it to be a lap dog and it lives up to the role magnificently.

The **Yorkshire Terrier**, a comparatively recent breed (1800s), bred in Yorkshire, England, is often seen with a bow in its hair, as owners of “Yorkies” may treat them like dolls. It is now a very fashionable dog, having started life as a rat catcher in a coal mining area. But the “Yorkie” has its moments and, although not an aggressive animal, if attacked it will fight back. This playful and cuddly dog loves children and, like them, can occasionally be temperamental. With correct training it can achieve a high standard of obedience.

The **Cavalier King Charles Spaniel** is a smaller version of the King Charles Spaniel. A lively pet, it can be rather nervous and is a good hunting dog over open country. A very adaptable dog, it is very fond of human company. This breed was first accepted by the American Kennel Club in 1945.





15



12



Basenji

From 40-42cm (16-18 inches) in height* and from 10-11kg (22-24 pounds) in weight. The coat is short and silky, reddish brown or tan colored with white patches.

Photos: 1, 7 & 10

Chihuahua

They can weigh as little as 1kg (2 pounds 4 ounces), but some reach 2kg (4 pounds 8 ounces). From 15-22cm (5-7 inches) in height. The coat is usually short and straight but there is also a longer, wavy coated variety. They can be reddish brown, silver, black or blue-gray in color.

Photos: 2, 6 (long haired), 8, 13 (short haired) and 15



13



Cavalier King Charles

From 25-34cm (10-13 inches) in height and 4.5-8kg (9-17 pounds) in weight. They have a soft, wavy, long coat which can be black and reddish brown in color, all red, white with red patches or all three colors.

Photos: 5, 11 & 12

Yorkshire Terrier

Up to 25cm (10 inches) in height and 3.5kg (7½ pounds) in weight. They have a long, silky coat, very full on the head. Their coat is two-colored; steely-blue to the base of the tail and red on the chest.

Photos: 3, 4, 9, 14

14



* The measurements given in this book refer to height at the shoulder. The lower figure given is for the smallest female dogs and the higher figure for the largest male dogs.

DALMATIAN • JAPANESE SPITZ

FRENCH BULLDOG

ENGLISH BULLDOG

FRENCH POODLE

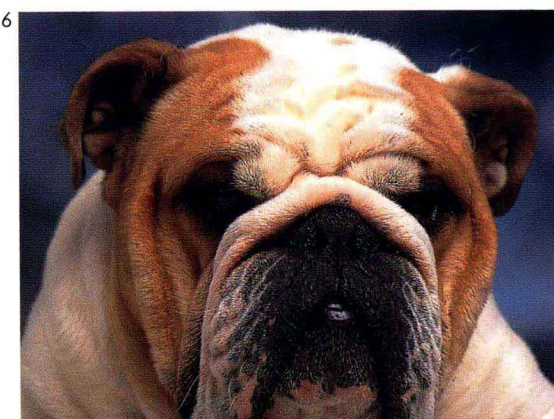
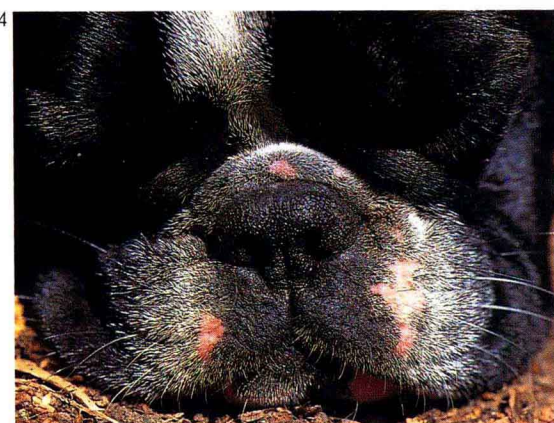
The **Dalmatian** does not come from Dalmatia and is certainly not of Yugoslavian origin, despite its name. Made popular in recent times by the Disney film, *101 Dalmatians*, varying ideas as to its origins abound. One theory is that it may have come from Asia to England in the 18th century via Egypt and Greece. It is a dog of many skills and was used for carrying messages in the Balkan wars. It makes a good watchdog, sheepdog, sled dog, and, in some countries, has even been used as a seeing-eye dog for the blind. The Dalmatian is very popular in the United States as the fire house mascot, often riding in the fire engines when they are called out. It is often pictured wearing a fire helmet, and "Sparky" is a popular name. It is a dog with a calm temperament which enjoys playing with children. The Dalmatian has a slightly melancholy air and depends, even more than most dogs, on human companionship. Its white coat with black or brown spots is internationally recognizable. It is a strange fact that Dalmatian puppies are born with plain white coats.

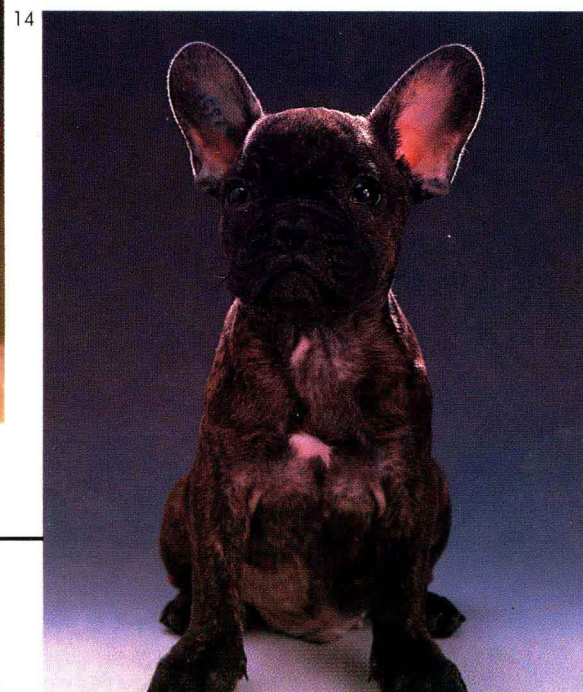
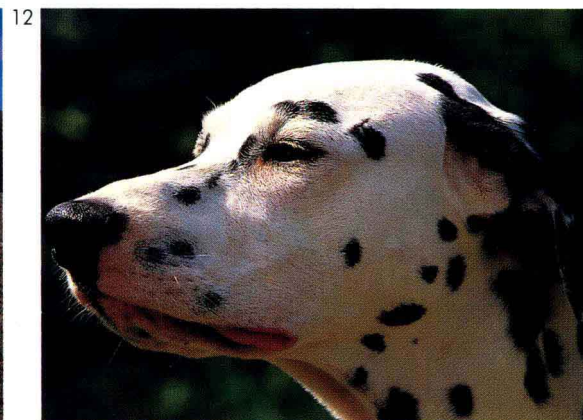
The **Japanese Spitz** has slanting eyes and, like all Spitzes, it makes a remarkable pet. Its charm and the pure white of its coat make it a dog sought after for its appearance, as well as for its intelligence, playfulness and affectionate nature.

The **Bulldog** was developed centuries ago (in the 1200s) in Great Britain and was used for bull baiting. The modern bulldog has had the ferocity bred out of it and it is typically gentle and reliable. It has a large head, folded ears and short muzzle with a protruding jaw, and loose skin that forms wrinkles on its head and face. An affectionate family pet, it is grouped in the non-sporting dogs group of the American Kennel Club.

The **French Bulldog**, as its name suggests, is a native of France. After much cross breeding it has become a rather small dog with the characteristics of a mastiff: large head and sullen look. American breeders have preserved the "bat ear" which is a distinctive feature of the breed. Today, it has nothing in common with the more ferocious breeds of bulldog. A big dog with short legs, it makes a good and affectionate family pet.

The **Poodle** has disputed origins; some say it was first bred in France, some in Denmark, Germany or Italy. It certainly became so popular in France that it is now the





national dog of that country and is often known as the French Poodle. It comes in three types: the Standard, Miniature and Toy poodle, all of which were first registered in the United States, where they are very popular, in 1887. A faithful companion and an elegant animal, often pampered, it always seems happy and ready to play. It makes a clever circus dog, and has been used for hunting as well as being a popular model for the great Renaissance and 18th century artists. Reputed to be one of the most intelligent dogs, the Poodle makes a fun, lively pet with a particularly well developed sense of smell.

Dalmatian

From 55-60cm (21-23 inches) in height. Weight should be around 25kg (55 pounds). They should have as many, clearly separated, black or reddish brown spots as possible.

Photos: 1, 8 & 12

Japanese Spitz

Height varies from 25-40cm (10-15 inches) The fur is straight, long and thick, and the coat is completely white.

Photo: 2

Bulldog

From 30-35cm (11-14 inches) in height and weight should be 22-30kg (48-66 pounds). The coat is very short and thick, fawn or white in color or fawn with white patches.

Photos: 6, 9 & 11.

French Bulldog

From 8-14kg (17-30 pounds) in weight. The coat is short and shiny, brindle or white with black patches.

Photos: 4, 5, 7 & 14

French Poodle

Standard: from 46-55cm (17-22 inches) in height; Miniature: from 36-45cm (13-15 inches); Toy: 25cm (10 inches) and under. Weight varies between 20kg (44 pounds) for a big Standard dog and 6kg (13 pound) for a small toy female. The coat is curly and may be chocolate, black, champagne or gray.

Photos: 3, 10, 13 & 15

TIBETAN SPANIEL • PUG CHOW CHOW • SHAR-PEI

The **Tibetan Spaniel** is probably related to the Pekingese and the Pug. It has a feathery tail and ears that hang down, but really nothing else in common with any other type of spaniel. It makes a good pet but can be shy and wary of strangers. It is as happy with city life as it is living in the country.

The **Pug** was first registered with the American Kennel Club in 1885. It has all the fascination of a big dog – in miniature. Its square muzzle and round head, with much-wrinkled forehead, make it look both fierce and touching. Despite its very black muzzle, flattened nose and awkward body, it is a dog that has charmed many with its gentle, affectionate nature. It can, however, be aggressive with strangers. A dog much favored in high society in the eighteenth and nineteenth centuries, it appears in many famous paintings.

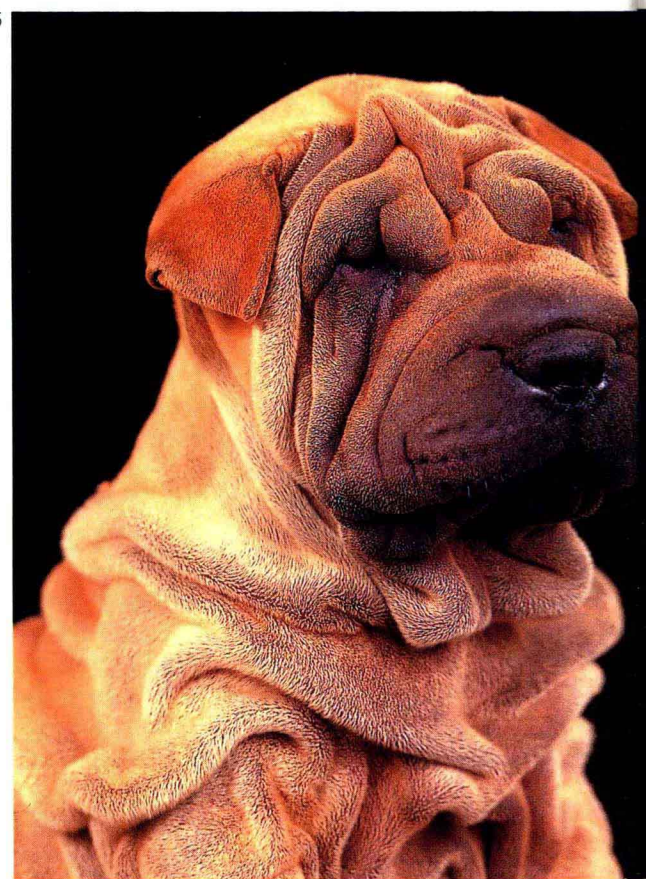
The **Chow Chow** comes from the same family as the Spitz, and resembles other sled dogs, such as the Alaskan Malamute. Slightly slanting eyes, face buried in a mass of thick fur out of which stick only the pointed ears and the end of a flattened nose, it presents to the world a scowling, uncommunicative appearance. Rather lazy, it usually only does what its owner says and can be very ferocious if approached by someone it does not know. Its introversion may be due to its background. Chow Chows were used to pull carts in 18th century China, where they were also eaten with much enjoyment by emperor and peasant alike. They love rice, which they sometimes even prefer to meat.

The **Shar-Pei**, once a Chinese fighting dog, has become one of the gentlest of pets. With its sad, baggy eyes and heavy folds of loose skin, it is unusual and enchanting. Some people think it is just wrinkly and ugly, but all agree that it is unique. The blue Shar-Pei is one of the most sought-after colors. In 1971 only a few specimens of this breed were known to exist, but it is now making a comeback in the United States.

4



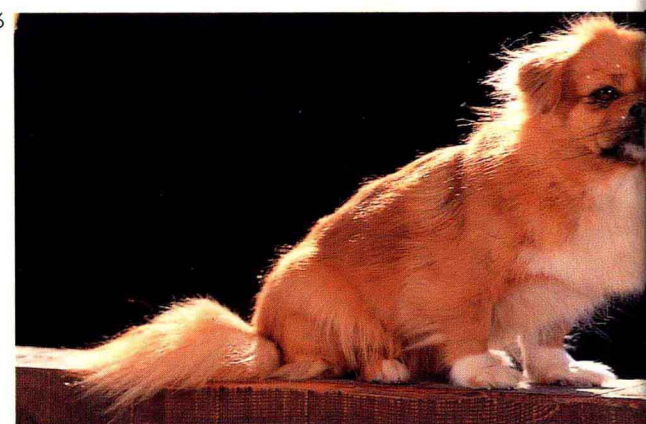
5



2



6



3





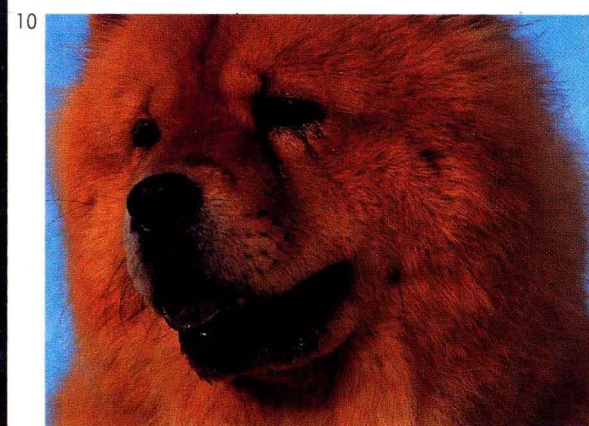
12



13



16



14



Tibetan Spaniel

Size is around 25cm (10 inches) in height and weight about 6.5kg (14 pounds). The flat coat is thick and may be white, fawn, any shade of brown, or black.

Photos: 6, 8 & 13

Pug

Very muscular, they should not weigh more than 8kg (17 pounds). The coat is flat and shiny and is usually cream, a warm tan, silver or black.

Photos: 2, 7 & 14

Chow Chow

From 46-60cm (18-23 inches) in height and 18-25kg (39-55 pounds) in weight. Always single colored, usually fawn, they may also be blue, cream, black or silver.

Photos: 4, 9, 10, 12 & 15

Shar-Pei

A compact-looking dog. Medium sized, between 40 and 50cm (15-19 inches) in height and 16-25kg (35-55 pounds) in weight. The coat is short and dense, fawn, cream or blue colored.

Photos: 1, 3, 5, 11 (blue Shar-Pei) & 16



15



CHINESE HAIRLESS DOG

SPITZ • SHIBA-INU

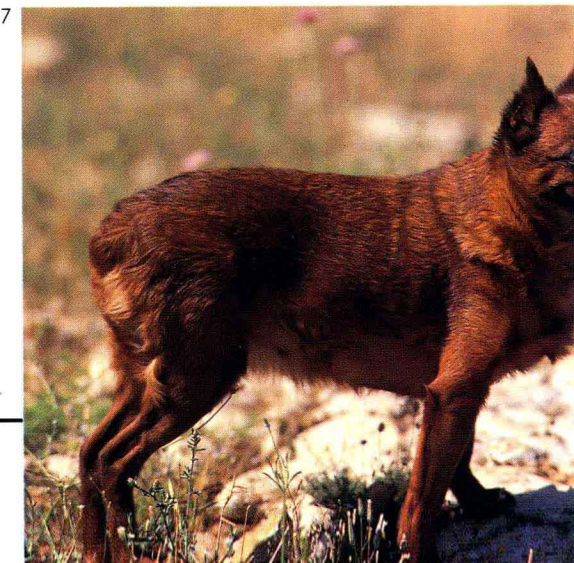
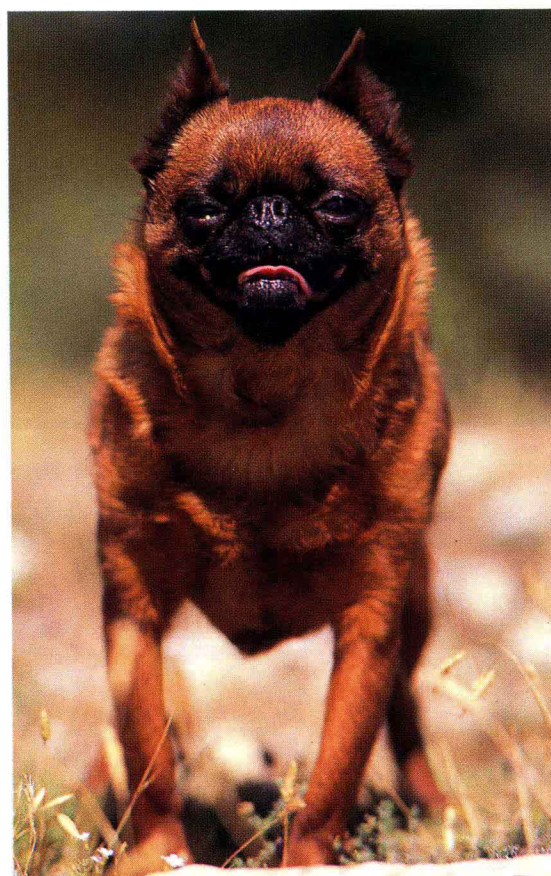
GRIFFON BELGE

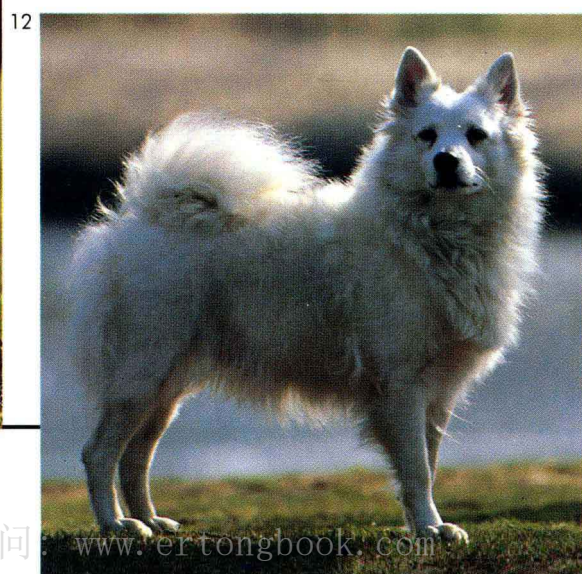
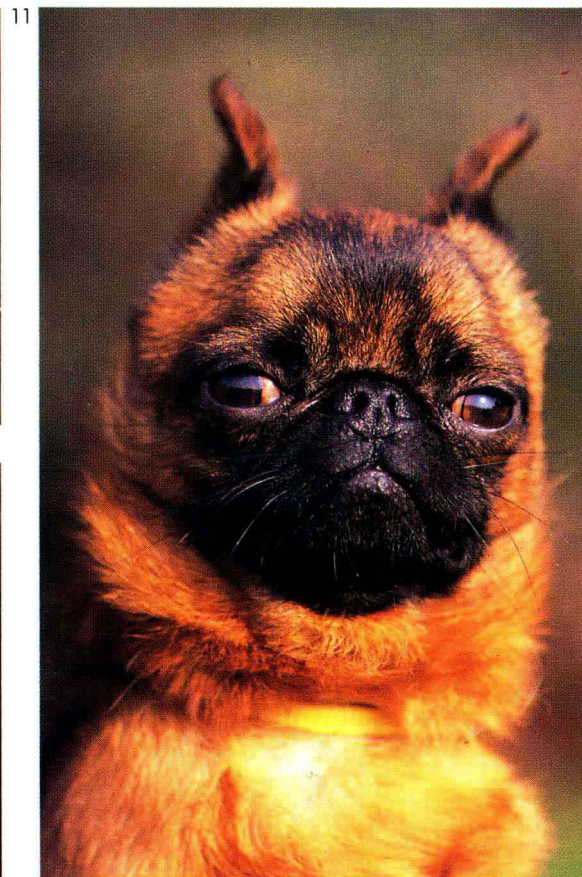
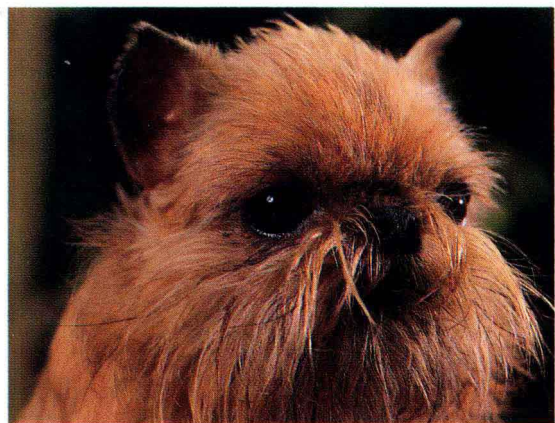
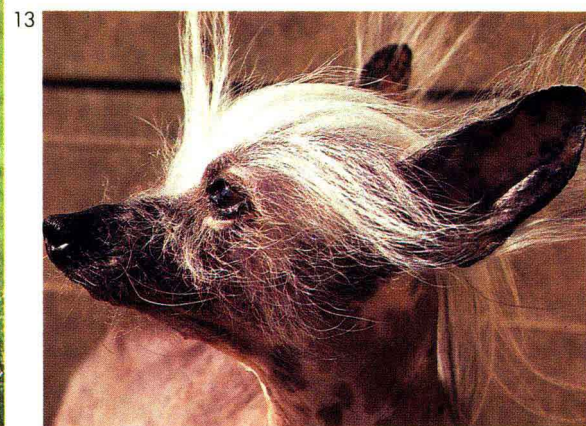
Despite its name, the origins of the **Chinese Hairless Dog** are uncertain, but it may have come from Africa. Despite its apparently slight build, it is actually quite a robust little dog. As the name suggests, it has no hair on its body. The only hair it has grows in comical tufts on the top of its head and sometimes on its face, feet and the end of its tail. Nevertheless it possesses a certain charm, and it is a proud and elegant dog. The shape of its head and ears and its dark colored nose add to its strange appearance. Delicate and needing a lot of care, it is sensitive and affectionate and gets on well with children, making it a very good pet.

The origin of the **Spitz** is a matter for argument; some say it is German, some Dutch and some Russian. Like all dogs of the same family, this breed is closely related to the first dogs to be domesticated. There is evidence that it existed in ancient Egypt. It was used for many different purposes and was once the favorite companion of Dutch bargemen. An alert expression, triangular ears and a plumed tail characterize the Spitz. Friendly and adaptable, it will even guard sheep, though it is not classed as a sheepdog. As a house dog it has no equal, both as a pet and guardian of its home and family. The eating habits of the Spitz can be hard on the pocket; it is best to accustom it early on to a diet that is not too concentrated on meat!

The **Shiba-Inu** is a Japanese dog. Related to the Chow Chow it is an ancient breed of the Spitz family. A dog of varied talents, it makes a good watchdog, pet and, occasionally, hunter of small animals.

The **Griffon Belge** was first registered in the United States in 1910. It is a fun mixture: part Schnauzer, part Pug, part terrier. A small pet dog which often looks bad tempered but is usually gentle, obedient and affectionate, its Gremlin-like appearance attracts sympathy, but beware, it can be difficult with small children.





Chinese Hairless Dog

From 40-50cm (15-20 inches) in height. Its skin is usually gray with reddish patches on the chest.

Photos: 1, 3, 6, 8, 10 & 13

Spitz

From 45-60cm (17-24 inches) in height. May weigh as much as 20kg (44 pounds). The coat is thick all over the body and there are four colors of Spitz: silver gray, black, pure white and tan.

Photos: 4, 12 & 14

Shiba-Inu

From 35-41cm (14-16 inches) in height. It has a thick, dense coat which may be red, gray and white (speckled or brindle), white or slate colored.

Photo: 5

Griffon Belge

There is no standard size for the Griffon. Weight may vary from 3-5kg (6-11 pounds). The coat is tough and luxuriant and may be black, black and red or black and tan.

Photos: 2, 7, 9 (long haired) & 11