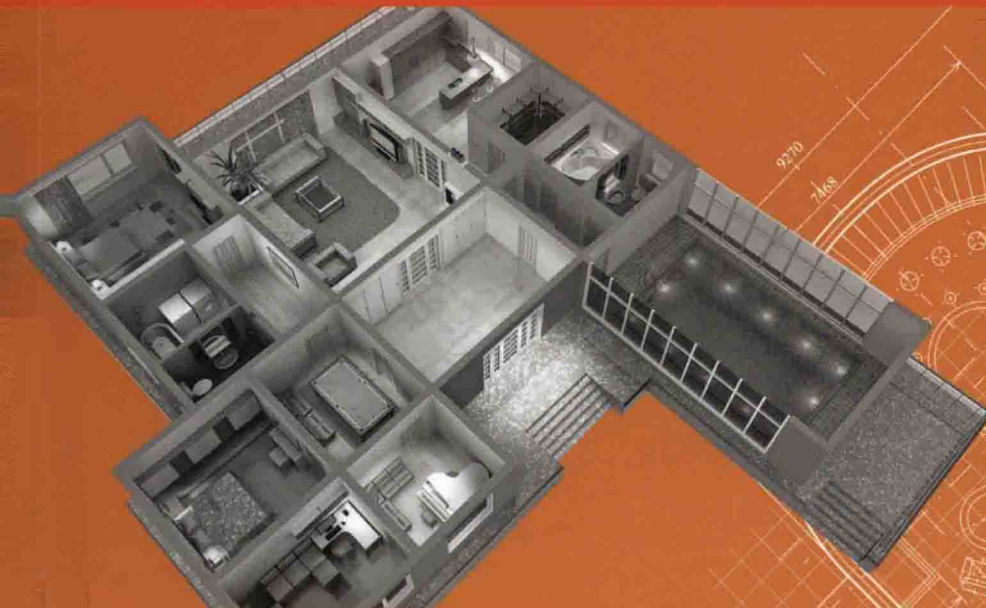


The background of the cover is a technical drawing in orange lines on a dark orange background. In the top right corner, there is a 3D rendering of a mechanical assembly consisting of a shaft with a large gear and a smaller gear mounted on it. The shaft is silver, and the gears are dark grey. A white rectangular box is located in the top left corner.

# Introduction to AutoCAD® 2016

## 2D and 3D Design



**Bernd S. Palm  
and Alf Yarwood**

**Autodesk**  
Authorised Author



**ROUTLEDGE**

# INTRODUCTION TO AutoCAD® 2016

## 2D AND 3D DESIGN

BERND S. PALM AND ALF YARWOOD

**Autodesk**  
Authorised Author



First published 2015  
by Routledge  
2 Park Square, Milton Park, Abingdon, Oxon OX14 4RN  
and by Routledge  
711 Third Avenue, New York, NY 10017

*Routledge is an imprint of the Taylor & Francis Group, an informa business*

© 2015 Bernd S. Palm and Alf Yarwood

The right of Bernd S. Palm and Alf Yarwood to be identified as authors of this work has been asserted by them in accordance with sections 77 and 78 of the Copyright, Designs and Patents Act 1988.

All rights reserved. No part of this book may be reprinted or reproduced or utilised in any form or by any electronic, mechanical, or other means, now known or hereafter invented, including photocopying and recording, or in any information storage or retrieval system, without permission in writing from the publishers.

*Trademark notice:* Product or corporate names may be trademarks or registered trademarks, and are used only for identification and explanation without intent to infringe.

*British Library Cataloguing-in-Publication Data*

A catalogue record for this book is available from the British Library

*Library of Congress Cataloging in Publication Data*

Palm, Bernd S.

Introduction to AutoCAD 2016 : 2D and 3D design / Bernd S. Palm and Alf Yarwood.

pages cm

Includes index.

1. AutoCAD. 2. Computer-aided design. I. Yarwood, A. (Alfred), 1917- II. Title. T386.A97.P35 2015

620'.0042028553--dc23

2015003273

ISBN: 978-1-138-92585-4 (pbk)

ISBN: 978-1-315-68353-9 (ebk)

Typeset in Sabon, Helvetica Neue and Trajan by

Servis Filmsetting Ltd, Stockport, Cheshire

Printed and bound in Great Britain by Ashford Colour Press Ltd



# INTRODUCTION TO AutoCAD® 2016

Master the complexities of the world's bestselling 2D and 3D software with *Introduction to AutoCAD® 2016*. Ideally suited to new users of AutoCAD, this book will be a useful resource for drawing modules in both vocational and introductory undergraduate courses in engineering and construction.

This book is a comprehensive, step-by-step introduction to the latest release of AutoCAD. Covering all the basic principles and acting as an introduction to 2D drawing, it also contains extensive coverage of all 3D topics, including 3D solid modelling and rendering.

- Written by members of the Autodesk Developer Network.
- Hundreds of colour pictures, screenshots and diagrams illustrate every stage of the design process.
- Worked examples and exercises provide plenty of practice material to build proficiency with the software.

Further education students in the UK will find this an invaluable textbook for City & Guilds AutoCAD qualifications as well as the relevant Computer Aided Drawing units of BTEC National Engineering, Higher National Engineering and Construction courses from Edexcel. Students enrolled in Foundation Degree courses containing CAD modules will also find this a very useful reference and learning aid.

**Bernd S. Palm** is an experienced Autodesk authorised author, lecturer and examiner. He works as a program manager, and develops course content, for online classes on different CAD software.

**Alf Yarwood** was a former Autodesk authorised author, lecturer and examiner who wrote numerous books covering the AutoCAD software package.

# CONTENTS

## PART A – 2D DESIGN

<b>1. Introducing AutoCAD 2016</b>	<b>3</b>
Aims of this Chapter	3
Opening AutoCAD 2016	3
The Mouse as a Digitizer	8
Setting the Shortcutmenu Variable	8
Palettes	8
Tool Palettes	10
Dialogs	12
Buttons in the Status Bar	14
The AutoCAD Coordinate System	16
Drawing Templates	18
Method of Showing Entries in the Command Palette	21
The Ribbon	22
The File Tabs	23
Customization of the Quick Access Toolbar	24
Revision Notes	25
<b>2. Calling Tools</b>	<b>27</b>
Aims of this Chapter	27
Methods of Calling Tools	27
Examples of the Four Methods of Calling Tools	28
Revision Notes	35
Exercises	35
<b>3. Introducing Drawing</b>	<b>37</b>
Aims of this Chapter	37
The Drafting & Annotation Workspace	37
Drawing with the Line Tool	39
Drawing with the Circle Tool	46
The Erase Tool	48
Undo and Redo Tools	50
Drawing with the Polyline Tool	51
Revision Notes	55
Exercises	56
<b>4. Draw Tools and Object Snap</b>	<b>59</b>
Aims of this Chapter	59
Introduction	59
The Arc Tool	61
The Ellipse Tool	62

Saving Drawings	64
Snap	66
Object Snaps (Osnaps)	66
Examples of Using Other Draw Tools	70
The Edit Polyline Tool	72
Transparent Commands	74
The Set Variable PELLIPSE	75
Revision Notes	76
Exercises	77
<b>5. Zoom, Pan and Templates</b>	<b>81</b>
Aims of this Chapter	81
Introduction	81
The Pan Tool	84
Drawing Templates	86
Adding Features to the Template	86
Setting Text	86
Setting Dimension Style	88
Setting Layers	91
Saving the Template File	93
Template File to Include Imperial Dimensions	96
Revision Notes	97
Exercises	98
<b>6. The Modify Tools</b>	<b>99</b>
Aims of this Chapter	99
Introduction	99
The Copy Tool	99
The Mirror Tool	102
The Offset Tool	104
The Array Tool	105
The Move Tool	108
The Rotate Tool	109
The Scale Tool	110
The Trim Tool	111
The Stretch Tool	112
The Break Tool	114
The Join Tool	115
The Extend Tool	116
The Fillet and Chamfer Tools	118
Revision Notes	120
Exercises	122
<b>7. Dimensions and Text</b>	<b>125</b>
Aims of this Chapter	125
Introduction	125
The Dimension Tools	125
Adding Dimensions Using these Tools	126
Adding Dimensions from the Command Line	129
The DIM Tool	134
Dimension Tolerances	135



Text	137
Symbols Used in Text	139
Checking Spelling	140
Revision Notes	141
Exercises	142

## **8. Orthographic and Isometric 145**

Aims of this Chapter	145
Layers	145
Orthographic Projection	148
First Angle and Third Angle	150
Isometric Drawing	154
Examples of Isometric Drawings	156
Revision Notes	159
Exercises	159

## **9. Hatching 163**

Aims of this Chapter	163
Introduction	163
The Hatch and Gradient Dialog	167
Revision Notes	172
Exercises	172

## **10. Blocks and Inserts 175**

Aims of this Chapter	175
Introduction	175
Blocks	175
Inserting Blocks into a Drawing	177
Notes About the DesignCenter Palette	181
The Explode Tool	182
Purge	182
Using the DesignCenter	183
Wblocks	185
Revision Notes	186
Exercises	187

## **11. Other Types of File Format 189**

Aims of this Chapter	189
Object Linking and Embedding	189
DXF (Data Exchange Format) Files	193
Raster Images	194
External References (Xrefs)	197
Dgnimport and Dgnexport	199
Multiple Design Environment (MDE)	201
Revision Notes	202
Exercises	203

## **12. Sheet Sets 205**

Aims of this Chapter	205
Sheet Sets	205
A Sheet Set for 64 Pheasant Drive	206

64 Pheasant Drive DWF	210
Revision Notes	212
Exercises	213

## PART B – 3D DESIGN

<b>13. Introducing 3D Modeling</b>	<b>217</b>
Aims of this Chapter	217
Introduction	217
The 3D Basics Workspace	217
Methods of Calling Tools for 3D Modeling	219
The Polysolid Tool	220
2D Outlines Suitable for 3D Models	222
The Extrude Tool	224
The Revolve Tool	227
Examples – Revolve Tool	227
Other Tools from Home/Create	230
The Chamfer and Fillet Tools	233
The Sweep Tool	235
The Loft Tool	236
Revision Notes	238
Exercises	238
<b>14. 3D Models in Viewports</b>	<b>243</b>
Aim of this Chapter	243
The 3D Modeling Workspace	243
Setting up Viewport Systems	244
Revision Notes	251
Exercises	252
<b>15. The Modification of 3D Models</b>	<b>255</b>
Aims of this Chapter	255
Creating 3D Model Libraries	255
Constructing a 3D Model	258
The 3D Array Tool	261
The 3D Mirror Tool	263
The 3D Rotate Tool	265
The Slice Tool	266
Views of 3D Models	268
The ViewCube	269
The Helix Tool	270
3D Surfaces	270
Revision Notes	271
Exercises	272
<b>16. Rendering</b>	<b>275</b>
Aims of this Chapter	275
Setting Up a New 3D Template	275



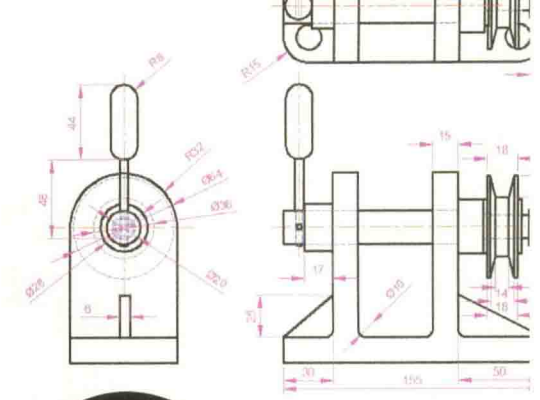
The Material Browser Palette	277
Assigning Materials to a Model	278
Modifying an Assigned Material	281
The Render Tools and Dialogs	283
The Lights Tools	283
Setting Rendering Background Colour	285
Free Orbit	295
Producing Hardcopy	295
Saving and Opening 3D Model Drawings	298
Camera	298
Using a Camera	301
Revision Notes	306
Exercises	307
<b>17. Building Drawing</b>	<b>309</b>
Aims of this Chapter	309
Building Drawings	309
Floor Layouts	313
3D Models of Buildings	314
Material Assignments and Rendering	322
Revision Notes	324
Exercises	324
<b>18. Three-Dimensional Space</b>	<b>331</b>
Aims of this Chapter	331
3D Space	331
The User Coordinate System (UCS)	332
The Variable UCSFOLLOW	333
The UCS Icon	333
Examples of Changing Planes Using the UCS	334
Saving UCS	338
Constructing 2D Objects in 3D Space	339
The Surfaces Tools	342
Revision Notes	345
Exercises	346
<b>19. Editing 3D Solid Models</b>	<b>353</b>
Aims of this Chapter	353
The Solid Editing Tools	353
Examples of More 3D Models	359
Exercises	363
<b>20. Other Features of 3D Modeling</b>	<b>367</b>
Aims of this Chapter	367
Raster Images in AutoCAD Drawings	367
Printing/Plotting	371
The Navigation Wheel	377
The Mesh Tools	377
Exercises	379

## PART C – INTERNET TOOLS AND DESIGN

<b>21. Internet Tools and Help</b>	<b>387</b>
Aim of this Chapter	387
Creating a Web Page	387
The eTransmit Tool	389
Help	389
Other Internet Sites Associated with AutoCAD 2016	390
<b>22. Design and AutoCAD 2016</b>	<b>393</b>
Aims of this Chapter	393
10 Reasons for Using AutoCAD	393
The Place of AutoCAD 2016 in Designing	394
A Design Chart	395

## APPENDICES

<b>Appendix A List of Tools</b>	<b>397</b>
Introduction	397
2D Commands	397
3D Commands	403
Internet Commands	405
<b>Appendix B Some Set Variables</b>	<b>407</b>
Introduction	407
System Variable Monitor	407
Some of the Set Variables	408
<b>Appendix C 3D Views</b>	<b>411</b>
Introduction	411
<b>Appendix D Keyboard Shortcuts</b>	<b>415</b>
Keyboard Shortcuts	415
Index	417

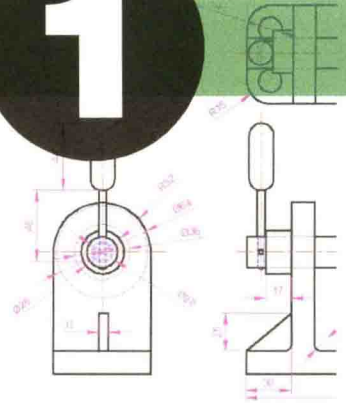


# PART **A**

## 2D DESIGN



# INTRODUCING AutoCAD 2016



## AIMS OF THIS CHAPTER

The contents of this chapter are designed to introduce features of the AutoCAD 2016 window and methods of operating AutoCAD 2016.

## OPENING AutoCAD 2016

AutoCAD 2016 is designed to work in a Windows operating system. In general, to open AutoCAD 2016 *double-click* on the **AutoCAD** shortcut in the Windows desktop (Fig. 1.1).

When working in education or in industry, computers may be configured to allow other methods of opening AutoCAD, such as a list appearing on the computer in use when the computer is switched on, from which the operator can select the program he/she wishes to use.



Fig. 1.1 The AutoCAD 2016 shortcut on the Windows desktop

When AutoCAD 2016 is opened, the Start page appears, giving access to recent drawings, system information and the Start Drawing button (Fig. 1.2). After starting a new drawing a new window is shown, depending upon whether a **3D Basics**, a **3D Modeling**, or a **Drafting & Annotation** workspace has been set as QNEW (in the **Options** dialog). In this example, the **Drafting & Annotation** workspace is shown and includes the **Ribbon** with **Tool** panels (Fig. 1.3). The **Drafting & Annotation** workspace shows the following details:

**Ribbon:** which includes tabs, each of which when *clicked* will include a set of panels containing tool icons. Other tool panels can be seen by *clicking* an appropriate tab.

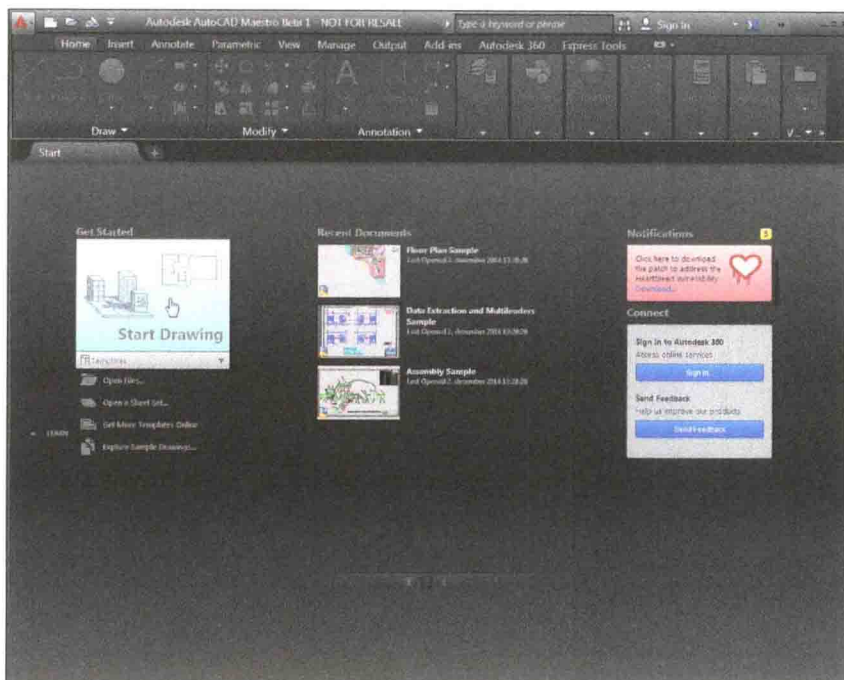


Fig. 1.2 The Start Page

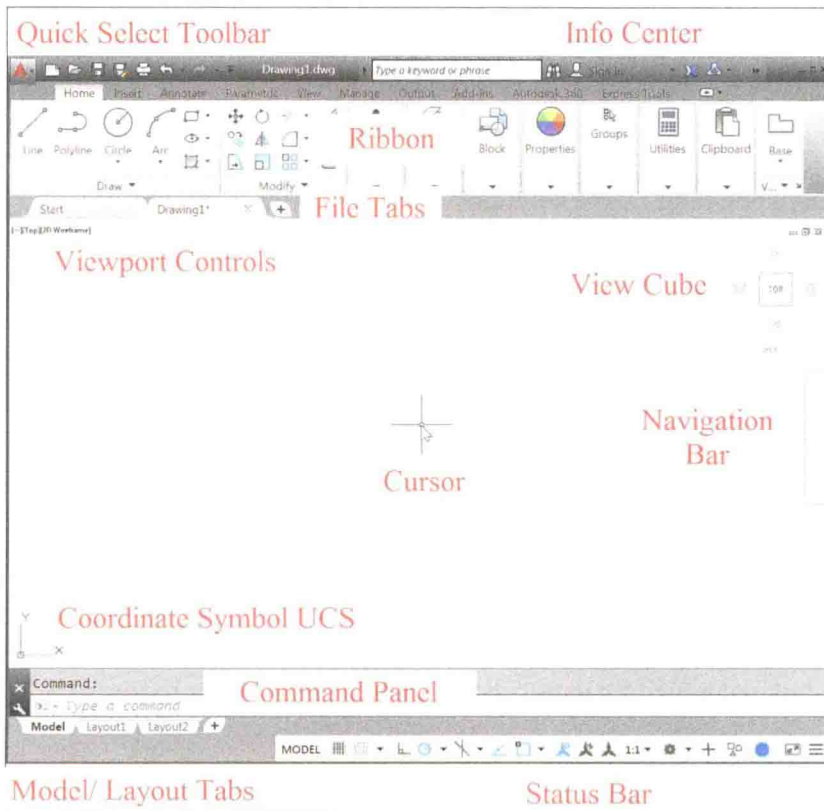


Fig. 1.3 The AutoCAD 2016 Drafting &amp; Annotation workspace



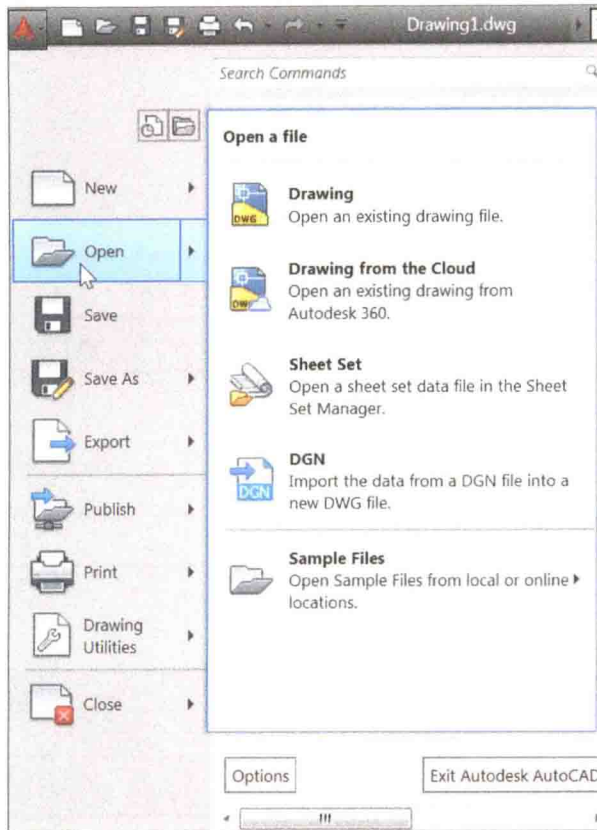


Fig. 1.4 The Menu Browser

**Menu Browser icon:** A *left-click* on the arrow to the right of the A symbol at the top left-hand corner of the AutoCAD 2016 window causes the **Menu Browser** menu to appear (Fig. 1.4).

**Workspaces Switching menu:** appears with a *click* on the **Workshop Switching** button in the status bar (Fig. 1.5).

**Command line:** can be changed as shown in Fig 1.6.

**Tool panels:** each includes tool icons appropriate to the panel.

Taking the **Home/Draw** panel as an example, Fig. 1.7 shows that placing the mouse cursor on one of the tool icons in a panel brings a tooltip on screen showing details of how the tool can be used. Two types of tooltip can be used in AutoCAD 2016. In the majority of future illustrations of tooltips, the smaller version will be shown. Other tool icons have popup menus appearing with a *click*. In the example given in Fig. 1.8, place the cursor over the **Circle** tool icon and a tooltip appears. A *click* on the arrow to the right of the tool icon brings down a popup menu showing the construction method options available for the tool.

**Quick Access toolbar:** The toolbar at the top left of the AutoCAD 2016 window holds several icons, one of which is the **Open** tool icon. A *click* on the icon opens the **Select File** dialog (Fig. 1.9).

**Navigation bar:** contains several tools that may be of value.

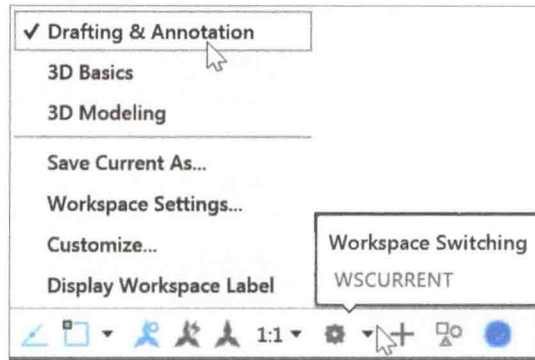
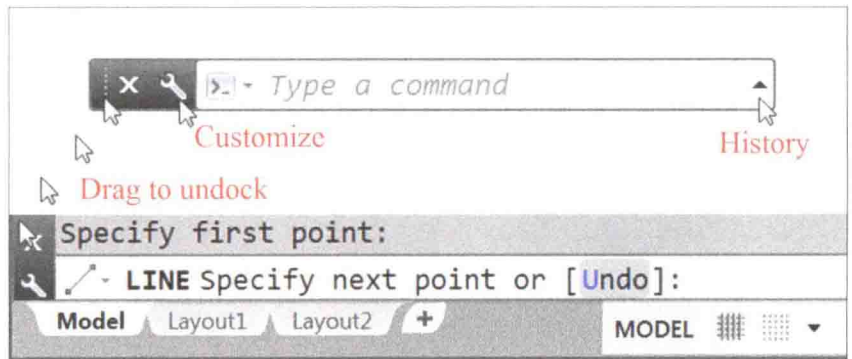
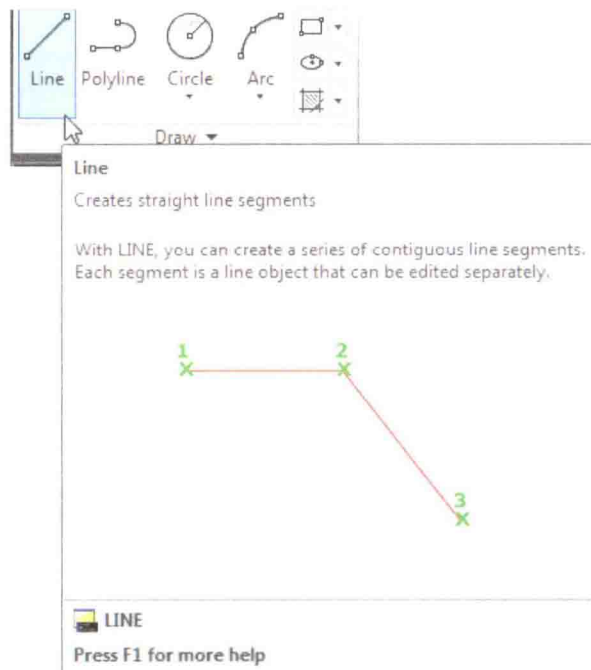


Fig. 1.5 The Workspace Switching popup menu

Fig. 1.6 The command palette when *dragged* from its position at the bottom of the AutoCAD windowFig. 1.7 The extended tooltip appearing with a *click* on the Line tool icon

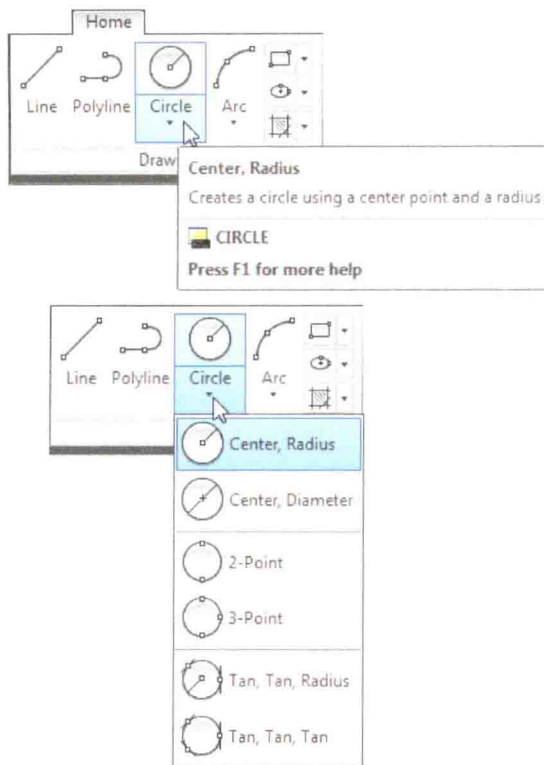


Fig. 1.8 The tooltip for the Circle tool and its popup menu

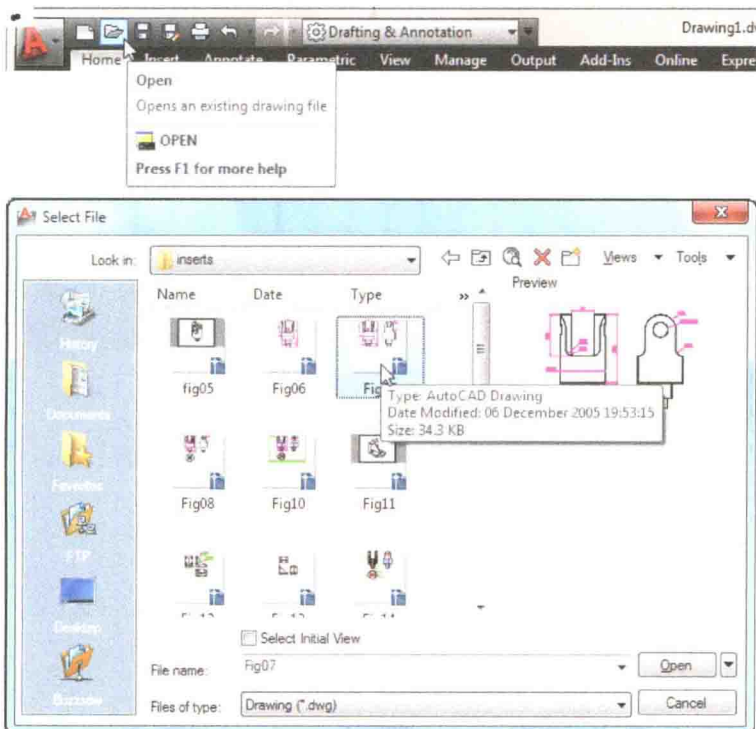


Fig. 1.9 The Open icon in the Quick Access toolbar brings the Select File dialog to screen