

Design + Concept + Script + Process

Architects

ARCHITECTS INDEX(A^{TO}Z):

3LHD, A-LAB, ALEJANDRO ARAVENA, ANTÓN GARCÍA-ABRIL & ENSAMBLE STUDIO, ANTTINEN OIVA ARCHITECTS, ATELIER
BOW-WOW, AUM-PIERRE MINASSIAN ARCHITECTE, BRISAC GONZALEZ ARCHITECTS, DELLEKAMP ARQUITECTOS, DIERENDON
BLANCHE ARCHITECTS, DIETMAR FEICHTINGER ARCHITECTS, DOSMASUNO ARQUITECTOS, EMRE AROLAT ARCHITECT
ESTUDIO CARME PINÓS, FASHION ARCHITECTURE TASTE (FAT), FRANCISCO MANGDO, GPY ARQUITECTOS, GROUP A, IB
& VITART, I/O ARCHITECTS, KHR ARKITEKTER, KSU KRÜGER SCHUBERTH VANDREIKE, KWK PROMES, LORCAN O'HERLI
ARCHITECTS, LONGHI ARCHITECTS, MASSIMO MARIANI ARCHITETTO, MOS, ONE ARCHITECTURE, P-A-T-T-E-R-N-S, PAU
DAVID ARQUITECTOS, ATELIER PHILEAS, PLASMA STUDIO, PRODUCTORA, RCR ARQUITECTES, ROJKIND ARCHITECT
SAUCIER + PERROTTE ARCHITECTES, TURÁNYI & TURÁNYI ARCHITECTS (T2.A), THE NEXT ENTERPRISE, ULARGUI & PESQUE
ARQUITECTOS, UN STUDIO, VAÍLLO & IRIGARAY, VMX ARCHITECTS, WIEL ARETS ARCHITECTS, WWA ARCHITECTS, XPIRA

CURATED AND EDITED BY BRUCE Q. LAN AADCU PROGRAM

Design + Concept + Script + Process

Architectural

ARCHITECTS INDEX(A^TOZ):

3LHD, A-LAB, ALEJANDRO ARAVENA, ANTÓN GARCÍA-ABRIL & ENSAMBLE STUDIO, ANTTINEN OIVA ARCHITECTS, ATELIER
BOW-WOW, AUM-PIERRE MINASSIAN ARCHITECTE, BRISAC GONZALEZ ARCHITECTS, DELLEKAMP ARQUITECTOS, DIERENDON
BLANCKE ARCHITECTS, DIETMAR FEICHTINGER ARCHITECTS, DOSMASUNO ARQUITECTOS, EMRE AROLAT ARCHITECT
ESTUDIO CARME PINÓS, FASHION ARCHITECTURE TASTE (FAT), FRANCISCO MANGUOPY ARQUITECTOS, GROUP A, IB
& VITART, I/O ARCHITECTS, KHR ARKITEKTER, KSU KRÜGER ARCHITECTS, KWK PROMES, LORCAN O'HERLI
ARCHITECTS, LONGHI ARCHITECTS, MASSIMO MARIANI ARCHITECTS, MOSKONE ARCHITECTURE, P-A-T-T-E-R-N-S, PAU
DAVID ARQUITECTOS, ATELIER PHILEAS, PLASMA STUDIO, PRATTORE ARCHITECTS, ROJKIND ARCHITECT
SAUCIER + PERROTTE ARCHITECTES, TURÁNYI & TURÁNYI ARCHITECTS, THE NEXT ENTERPRISE, ULARGUI & PESQUE
ARQUITECTOS, UN STUDIO, VAÍLLO & IRIGARAY, VMX ARCHITECTS, WIEL ARETS ARCHITECTS, WWA ARCHITECTS, XPIRA

CURATED AND EDITED BY BRUCE Q. LAN AADCU PROGRAM

常州大学图书馆
藏书章

建筑手册

建筑手册 ∞ 设计 概念 脚本 过程

AADCU Publication
www.aadcu.org
info@aadcu.org

© 2010 AADCU

ISBN: 978-7-5609-6040-1

All rights reserved. No part of this publication may be reproduced,stored in a retrieval system or transmitted in any form or by means, electronic, mechanical, photocopying, recording or otherwise, without the permission of AADCU.

Project Director: Bruce Q. Lan
Coordinator: Xiaoqu Luo/Stanford University
Curator/Editor In Chief: Bruce Q. Lan
Book Design: Bruce Q. Lan with °C Office®
Edited and Published by: Beijing Office/United Asia Art&design Cooperation/bj-info@aadcu.org
In Collaboration with: d-Lab&International Architecture Research; °C Office®

©本书所有内容均由原著作权人授权美国亚洲艺术与设计协作联盟编辑出版,并仅限于本项目使用。任何个人和团体不得以任何媒介形式翻录。依照国际知识产权公约和世界知识产权组织(WIPO)公约,美国亚洲艺术与设计协作联盟出版项目将对在中国区域内发现的盗版行为向美国国家版权管理局和欧盟知识产权集体管理委员会提送报告和取证,版权人所在国的知识产权管理机构拥有经由世界知识产权组织协调委员会向盗版所在国知识产权管理机构提起国际法律诉讼的权力。

编辑出版: 亚洲艺术与设计协作联盟\美国\info@aadcu.org
协同合作: 国际建筑研究与设计中心\美国;零度事务\美国
学术策划: 蓝青
国际协调: 罗小渠\斯坦福大学
书籍设计: 蓝青, °C Office®

acknowledgements

This publication has been made possible with the help and cooperation of many individuals and institutions. Special thanks are due to the 45 contributors in this volume: 3LHD, A-Lab, Alejandro Aravena, Antón García-Abril & Ensemble Studio, Anttinen Oiva Architects, Atelier Bow-Wow, AUM-Pierre Minassian Architecte, Brisac Gonzalez Architects, Dellekamp Arquitectos, Dierendonck Blancke Architects, Dietmar Feichtinger Architects, Dosmasuno Arquitectos, Emre Arolat Architects, Estudio Carme Pinós, Fashion Architecture Taste (Fat), Francisco Mangdo, GPY Arquitectos, Group A, Ibos & Vitart, I/O Architects, KHR Arkitekter, KSV Krüger Schuberth Vandreiike, KWK Promes, Lorcan O’Herlihy Architects, Longhi Architects, Massimo Mariani Architetto, MOS, One Architecture, P-A-T-T-E-R-N-S, Paulo David Arquitectos, Atelier Phileas, Plasma Studio, Productora, RCR Arquitectes, Rojkind Arquitectos, Saucier + Perrotte Architectes, Turányi & Turányi Architects (T2.a), the next ENTERprise, Ulargui & Pesquera Arquitectos, UN Studio, Vaillo & Irigaray, VMX Architects, Wiel Arets Architects, WWA Architects, Xpiral.

图书在版编目(CIP)数据

建筑手册. 2: 设计, 概念, 脚本, 过程 / 蓝青编著.
—武汉: 华中科技大学出版社, 2010.6
ISBN 978-7-5609-6040-1
I. 建... II. 蓝... III. 建筑设计—手册 IV. TU2-62
中国版本图书馆CIP数据核字(2010)第030367号

建筑手册. 2: 设计, 概念, 脚本, 过程
主 编: 蓝青
美国亚洲艺术与设计协作联盟(AADCU)

出版发行: 华中科技大学出版社
地 址: 武汉市珞喻路1037号(邮编: 430074)
出 版 人: 阮海洪
责任编辑: 陈骏
责任监印: 张正林
制版印刷: 北京建宏印刷有限公司
开 本: 889mmx1194mm 1/12
印 张: 41.5
字 数: 246千字
版 次: 2010年6月第1版
印 次: 2010年6月第1次印刷
ISBN 978-7-5609-6040-1/TU·783
定 价: 498.00元

销售电话: 022- 60266199(兼传真), 64155566(兼传真)
网 址: www.hustpas.com

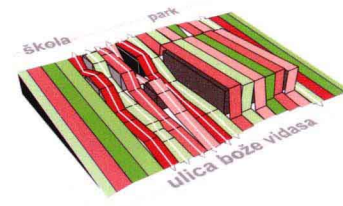
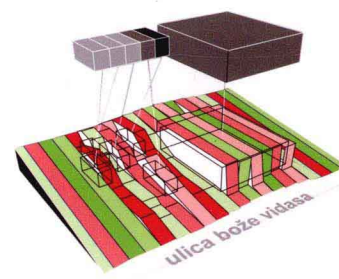
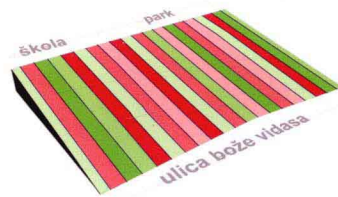
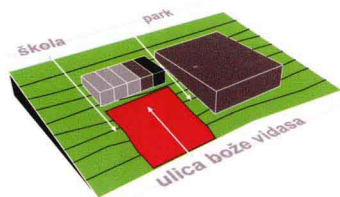
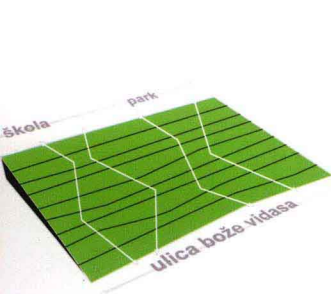
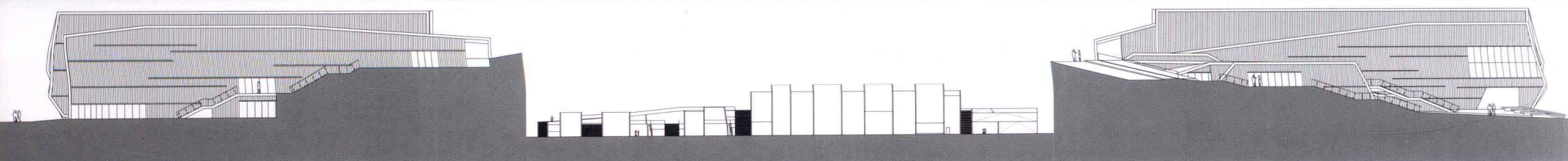
CONTENTS

3LHD Zamet Centre Zagreb Dance Center Spaladium Centre Sports/City Hall Bale	008	Emre Arolat Architects Santralistanbul Museum of Contemporary Arts Dalaman International Airport Terminal Sabiha Gökçen International Airport Terminal Minicity Theme Park Building	136
A-Lab Deichmanske Main Library in Oslo Arctic Culture Centre	026	Estudio Carme Pinós Caixaforum Primary School in Castelldefels Cube Tower	154
Alejandro Aravena St. Edward’s University New Residence and Dining Hall	036	Fashion Architecture Taste (Fat) Hoogvliet Villalst ington Square Sint Lucas Art Academy	164
Antón García-Abril & Ensemble Studio Hemeroscopium House Tower of Music	042	Francisco Mangdo Ávila Congress and Exhibition Municipal Centre University Swimming Pools. Orense Museum of Archeology in Vitoria High Performance Equestrian Centre. Ultzama	174
Anttinen Oiva Architects The University of Helsinki City Campus Library Lilja Ecumenical Meditative Chapel Sámi Cultural Centre	056	GPY Arquitectos Tenerife School of Dramatic Arts Faculty of Fine Arts, University of La Laguna	200
Atelier Bow-Wow Double Chimney Pony Garden Ordos 100	070	Group A Blok 1 Presikhaaf Caballerofabriek	210
AUM-Pierre Minassian Architecte Biscuit House	078	Ibos & Vitart The Andre Malraux Library Rennes Archives Apartment	220
Brisac Gonzalez Architects Multi Purpose Hall Peacock Visual Arts Centre Museum of World Culture	084	I/O Architects Liulin Apartment Block	236
Dellekamp Arquitectos CB 29, CB 30 Ordos 100	096	KHR Arkitekter Church of Holy Cross Building Fiberline Hedorf Residence Hall Ørestad School	240
Dierendonck Blancke Architects Community Centre Avelgem Open Air Swimming Pool on the Beach	100	KSV Krüger Schuberth Vandreike 2008 Beijing International Fair, BMW Brand 2009 Shanghai, BMW + MINI Brand	248
Dietmar Feichtinger Architects Footbridge Valmy Financial and Commercial Department of Voest Alpine Stahl GMBH	110	KWK Promes Aatrial House	254
Dosmasuno Arquitectos Carabanchel Socical Dwellings	124		

Outrial House		Saucier + Perrotte Architectes	370
Lorcan O’Herlihy Architects	262	Perimeter Institute for Research in Theoretical Physics Scandinave Les Bains Vieux-Montréal	
Formosa 1140 Habitat 825 Willoughby 7917		Turányi & Turányi Architects (T2.a)	380
Longhi Architects	274	Waterfront Kopaszi Dam	
Pachacamac House Beach House at Punta Misterio		the next ENTERprise	392
Massimo Mariani Architetto	282	Lakeside Bath Cloud Tower Vertical Bathingscape	
Cabel Industry Museo Di Benozzo Gozzoli		Ulargui & Pesquera Arquitectos	412
MOS	296	Fine Arts Museum of Pontevedra Ibiza Congress Palace Restoration of Cubo del Revellodn	
Arcade Arts Archipelago Terry Winters Studio Ordos 100		UN Studio	424
One Architecture	306	Music Theater, Graz	
St. Jozef Health Center		Vaíllo & Irigaray	436
P-A-T-T-E-R-N-S	312	Tower Offices + Hotel Office Silo + Containers	
Broad Café Manifold Dubai		VMX Architects	452
Paulo David Arquitectos	320	Aziëweg Dwellings Directie Noordzee S-House	
Câmara de Lobos Bay Revedelopment Art Center - Casa Das Mudas		Wiel Arets Architects	462
Atelier Phileas	330	Living Madrid - Pradolongo Housing Europol	
Line13 HQ HUB		WWA Architects	474
Plasma Studio	336	Polish Expo 2010 Exposition Pavilion	
Flowing Gardens, International Horticultural Expo 2011 Strata Hotel		Xpiral	480
Productora	344	Casa de Los Pinos	
House in Chihuahua			
RCR Architectes	350		
Library, Senior Citizens’ Centre and City Block Core Zone			
Rojkind Arquitectos	360		
Nestlé Application Group Querétaro			

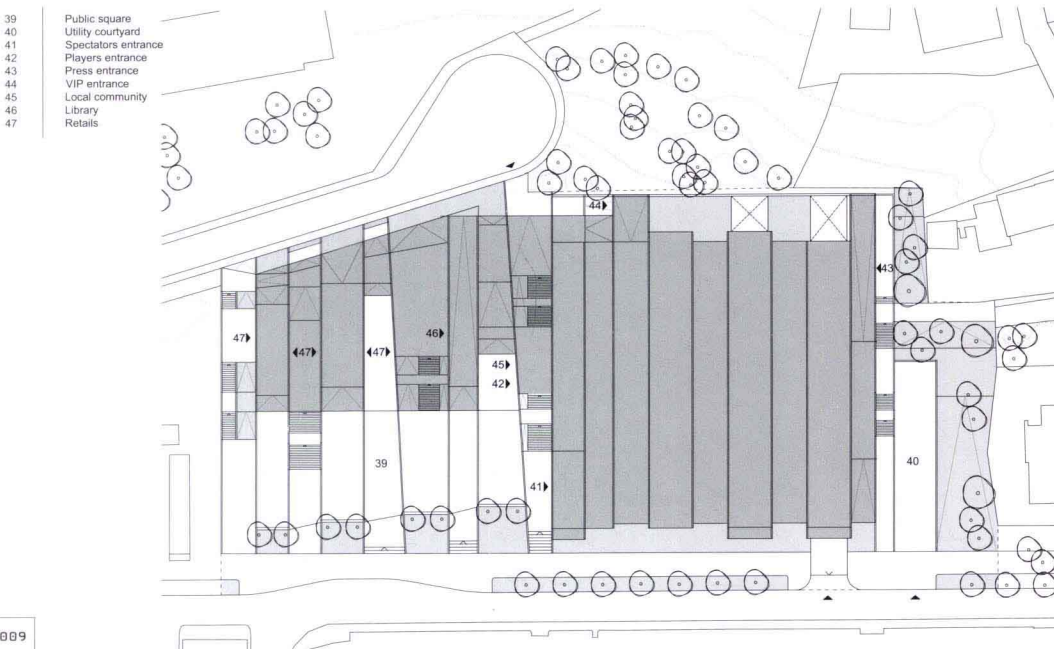
3LHD | ZAMET CENTRE

Project team: Sasa Begovic, Tatjana Grozdanic Begovic, Marko Dabrovic, Silvije Novak, Paula Kukuljica, Zvonimir Marcic, Leon Lazaneo, Eugen Popovic, Nives Krsnik Rister, Andrea Vukojic | Collaborators: Mateo Bilus, Building Physics / Details; Berislav Medic, UPI-2M, Structural Engineering; Branko Corko, IPZ-elektroinzenjering 22, Electrical Engineering; Mario Lukenda, Termoinzenjering-projektiranje d.o.o., HVAC; Slavko Simunovic, HIT PROJEKT, MEP Engineering - Plumbing; Nenad Semenov, PASTOR, sprinkler installation; Rok Pietri, LIFT MODUS, elevators; Zeljko Arbanas, IGH PC Rijeka, diaphragm wall; Zeljko Stipkovic, Fire Protection; Ivica Babic, Zavod za zastitu na radu Rijeka, Safety at Work; Marija Babojelic, Special Consultant - Cost Consultant; Ines Hrdalo, Landscape Architect; Damir Bralic, Lana Cavar i Narcisa Vukojevic, signage and environmental graphics design; Nikola Durek, "Typonine Zamet" typeface design | Program: public, cultural, business, sport | Location: Rijeka, Croatia; Client: Grad Rijeka / Rijeka Sport d.o.o. | Project start date: 2004; Construction end date: 10.09.2009 | Site area (m²): 12289; Size (m²): 16830; Volume (m³): 88075; Footprint (m²): 4724; Entry level: 103; Budget (EUR): 20 mil





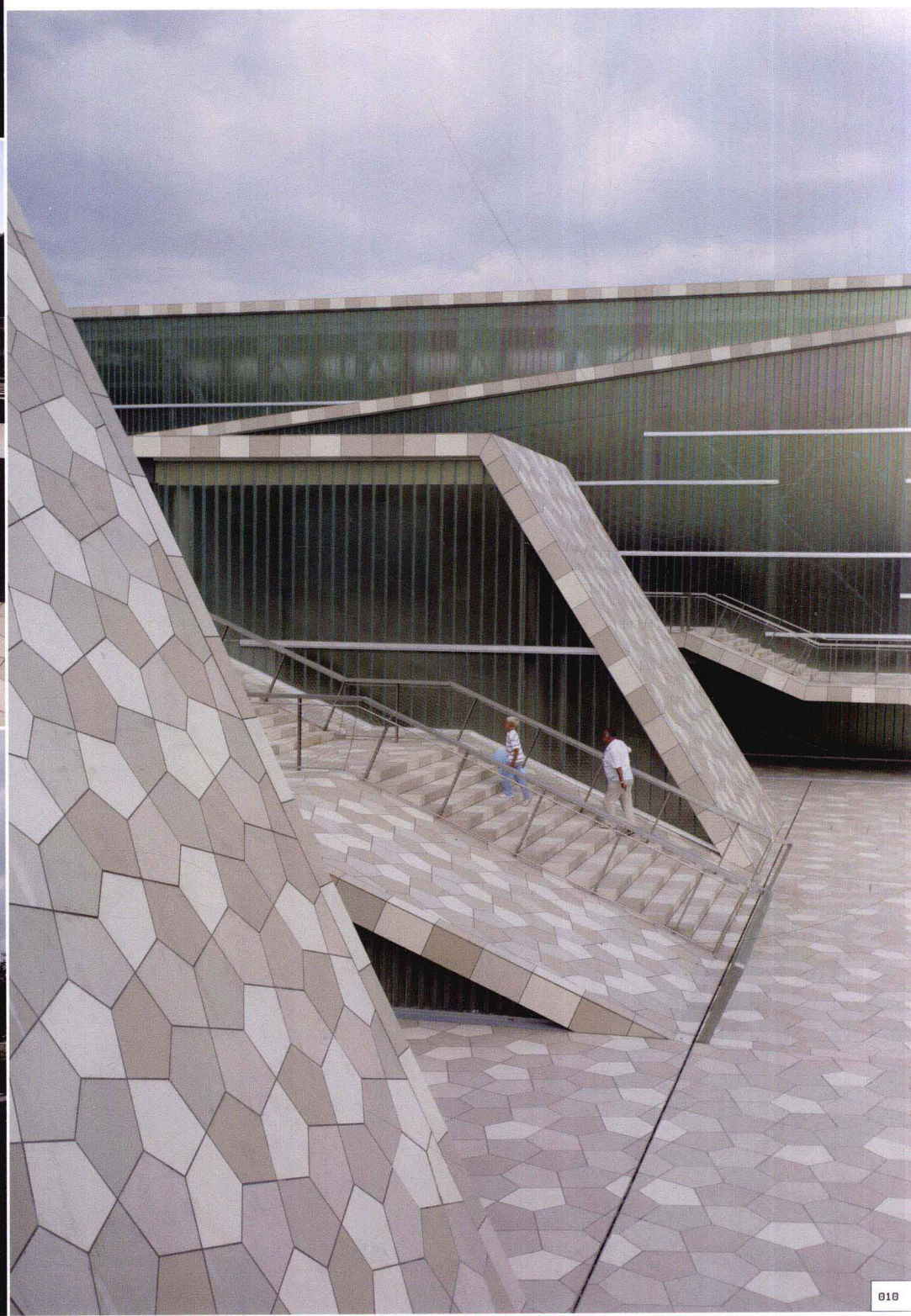
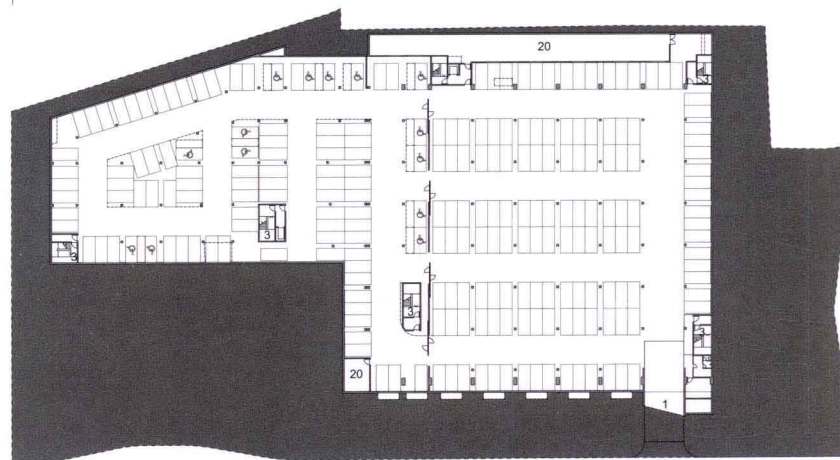
Situated in Rijeka's quarter Zamet, the new Zamet Centre in complete size of 16830 m² hosts various facilities: sports hall with max 2380 seats, local community offices, library, 13 retail and service spaces and a garage with 250 parking spaces. ¶ The goal and a perpetual guideline for the project were the evaluation and a minimum distortion of the existing urban environment. One third of the sports hall volume is cut in the ground, and the rest of the Centre is fully fitted into the surrounding landscape. The building's main architectural element are ribbon-like linear stripes stretching over the site in a north-south direction, functioning at the same time as an architectural design element of the object and as a zoning element which forms a public square and a link between the park on the north and school and B. Vidas street on the south. ¶ The stripes were inspired by "gromaca", a type of rocks specific to Rijeka, which the centre artificially reinterprets by colour and shape. They are paved with 51.000 ceramic tiles designed by 3LHD and manufactured specially for the centre. The steel construction, girder span of 55 meters and their varying height allow the natural light to illuminate the sports hall. ¶ The hall has been designed in accordance with the latest world sports standards for major international sports competitions. The concept is based on flexibility of space. Playground size is 46 x 44 meters, for two handball courts. The hall contains all the supporting facilities for professional training and competition, and the auditorium designed as a system of telescopic stands enables the transformation for everyday use as well as for other activities such as concerts, conferences and congresses. Selected interior materials - wood and acoustic panels and the equipment used to furnish the hall suggest that it is a large living room for athletes. The main access to the hall and other facilities is located west of the hall from the public square and from the underground garage.





1
3
20

Entry
Staircase
Technical room



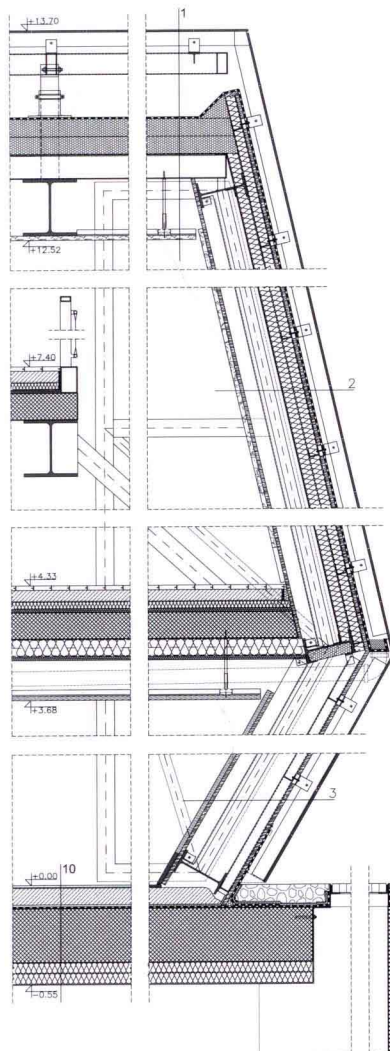


roof construction
 ceramic tiles on aluminium construction 11 mm
 ventilated cavity -
 two-layer TPO roof seal 4 mm
 sloping polystyrene rigid-foam thermal insulation 200 mm
 vapour barrier 5 mm
 corrugated steel sheeting 137 mm
 steel structure
 wood wool acoustic panels

wall construction - ceramic tiles
 wood wool acoustic panels 25 mm
 oriented-strand board on wood construction 20 mm
 air cavity -
 vapour barrier 0.2 mm
 mineral wool thermal insulation 120 mm
 oriented-strand board 20 mm
 sealing layer 4 mm
 ventilated cavity -
 ceramic tiles on aluminium construction 11 mm

wall construction - ceramic tiles
 fibre-cement board 25 mm
 oriented-strand board on wood construction 20 mm
 air cavity -
 oriented-strand board on steel construction 20 mm
 vapour-permeable and water-resistant membrane 1 mm
 air cavity -
 ceramic tiles on aluminium construction 11 mm

floor construction
 cast floor - polyurethane 3 mm
 screed 65 mm
 separating layer 0.2 mm
 expanded polystyrene impact-sound insulation EPS 40 mm
 elastic expanded polystyrene EPS-T 20 mm
 reinforced concrete slab 300 mm
 mineral wool thermal insulation 120 mm
 plaster 2 mm



1 roof construction
 ceramic tiles on aluminium construction 11 mm
 ventilated cavity -
 two-layer TPO roof seal 4 mm
 sloping polystyrene rigid-foam thermal insulation 200 mm
 vapour barrier 5 mm
 corrugated steel sheeting 137 mm
 steel structure
 wood wool acoustic panels

4 wall construction - U profiled glass
 2x12.5mm plasterboard 25 mm
 oriented-strand board on steel construction 20 mm
 air cavity -
 vapour barrier 0.2 mm
 oriented-strand board on steel construction 20 mm
 rock wool thermal insulation 120 mm
 ventilated cavity 40 mm
 U-profiled glass in aluminium frame 83 mm

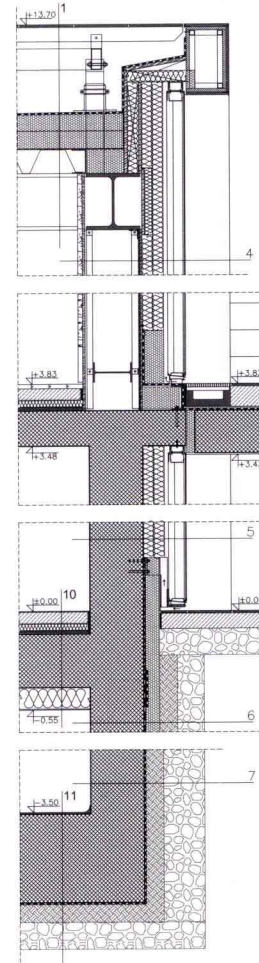
5 wall construction - U profiled glass
 reinforced concrete wall 300 mm
 rock wool thermal insulation 120 mm
 ventilated cavity 40 mm
 U-profiled glass in aluminium frame 83 mm

6 wall construction in ground
 reinforced concrete wall 300 mm
 bentonite-geotextile waterproofing membrane 6.4 mm
 sloping polystyrene rigid-foam thermal insulation 80 mm
 soil layer 100 mm
 drainage layer of gravel

7 wall construction in ground
 reinforced concrete wall 300 mm
 bentonite-geotextile waterproofing membrane 6.4 mm
 soil layer 100 mm
 drainage layer of gravel

10 floor construction
 cast floor - polyurethane 3 mm
 screed 65 mm
 separating layer 0.2 mm
 expanded polystyrene impact-sound insulation EPS 40 mm
 elastic expanded polystyrene EPS-T 20 mm
 reinforced concrete slab 300 mm
 mineral wool thermal insulation 120 mm
 plaster 2 mm

11 ground floor construction
 epoxy coating 3 mm
 reinforced concrete foundation slab 500 mm
 bentonite-geotextile waterproofing membrane 6.4 mm
 soil layer 100 mm
 bed of gravel



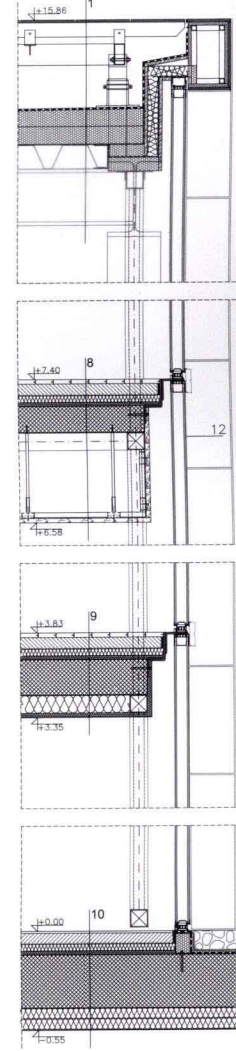
1 roof construction
 ceramic tiles on aluminium construction 11 mm
 ventilated cavity -
 two-layer TPO roof seal 4 mm
 sloping polystyrene rigid-foam thermal insulation 200 mm
 vapour barrier 5 mm
 corrugated steel sheeting 137 mm
 steel structure
 wood wool acoustic panels

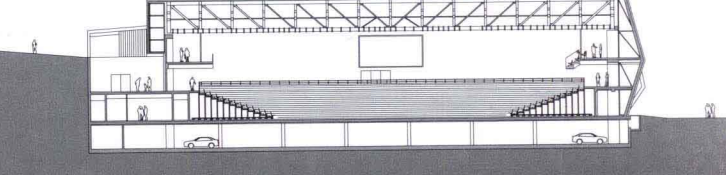
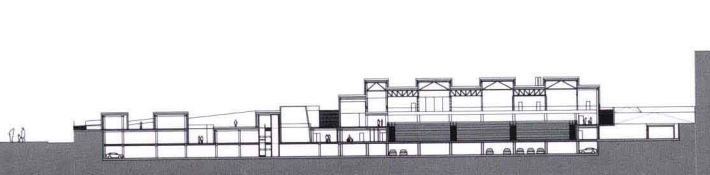
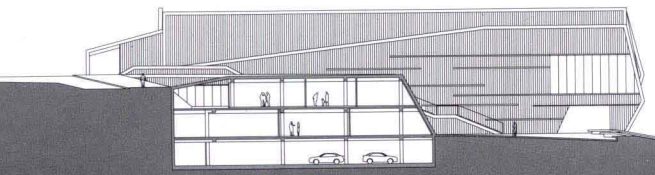
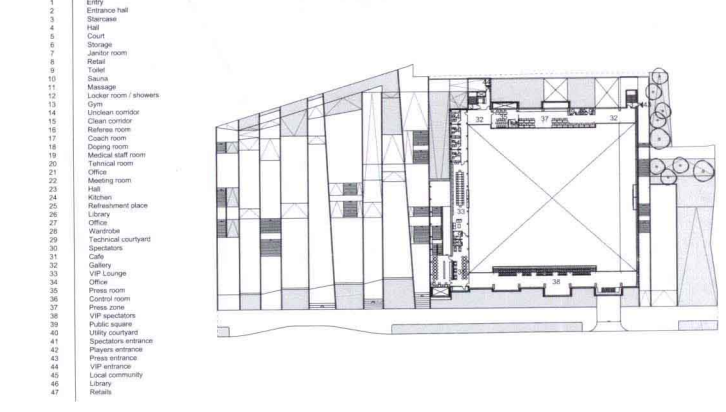
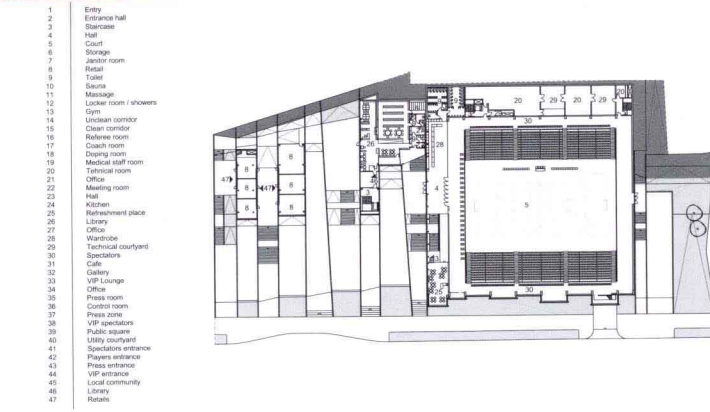
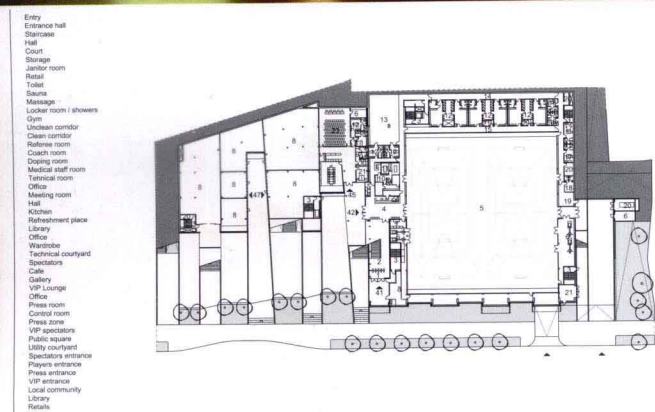
8 floor construction
 parquet 15 mm
 screed 65 mm
 separating layer 0.2 mm
 expanded polystyrene impact-sound insulation EPS 40 mm
 elastic expanded polystyrene EPS-T 20 mm
 reinforced concrete slab 150 mm
 air cavity -
 wood wool acoustic panels 25 mm

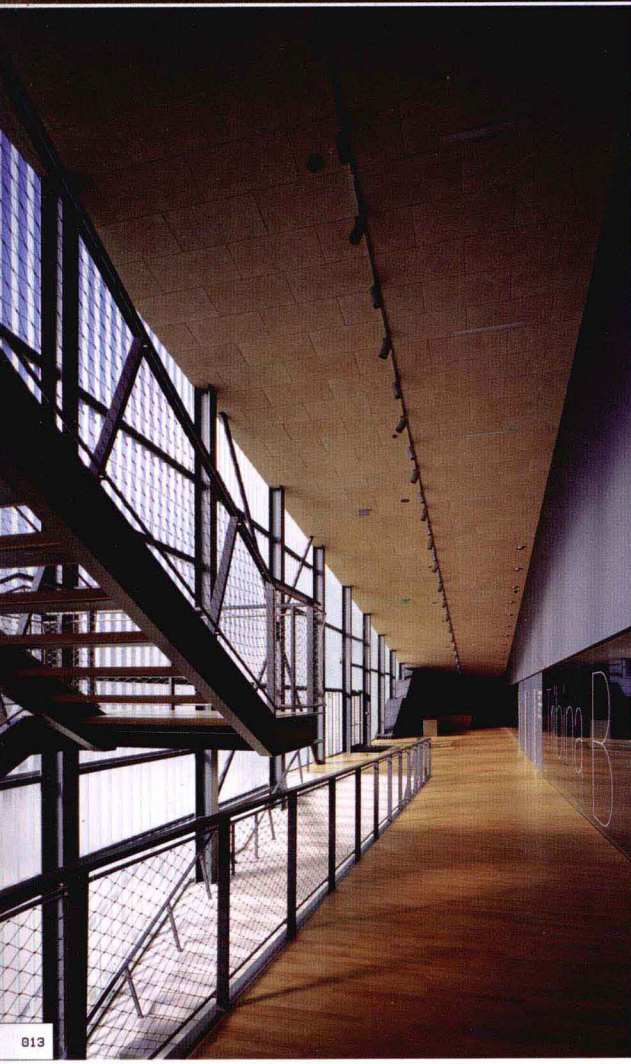
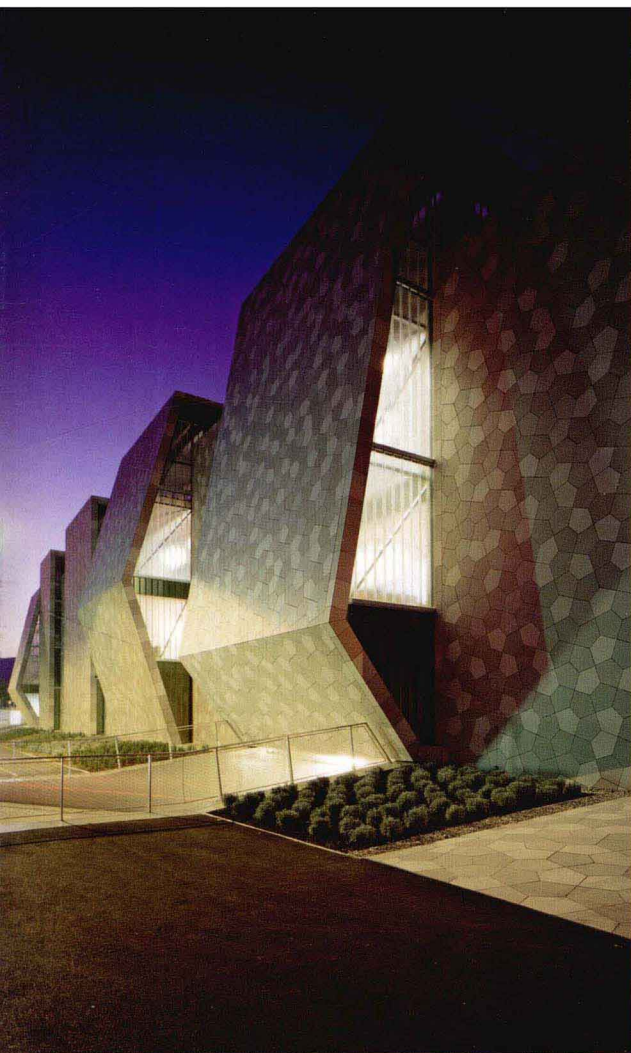
9 floor construction
 parquet 15 mm
 screed 65 mm
 separating layer 0.2 mm
 expanded polystyrene impact-sound insulation EPS 40 mm
 elastic expanded polystyrene EPS-T 20 mm
 reinforced concrete slab 200 mm
 rock wool thermal insulation 120 mm

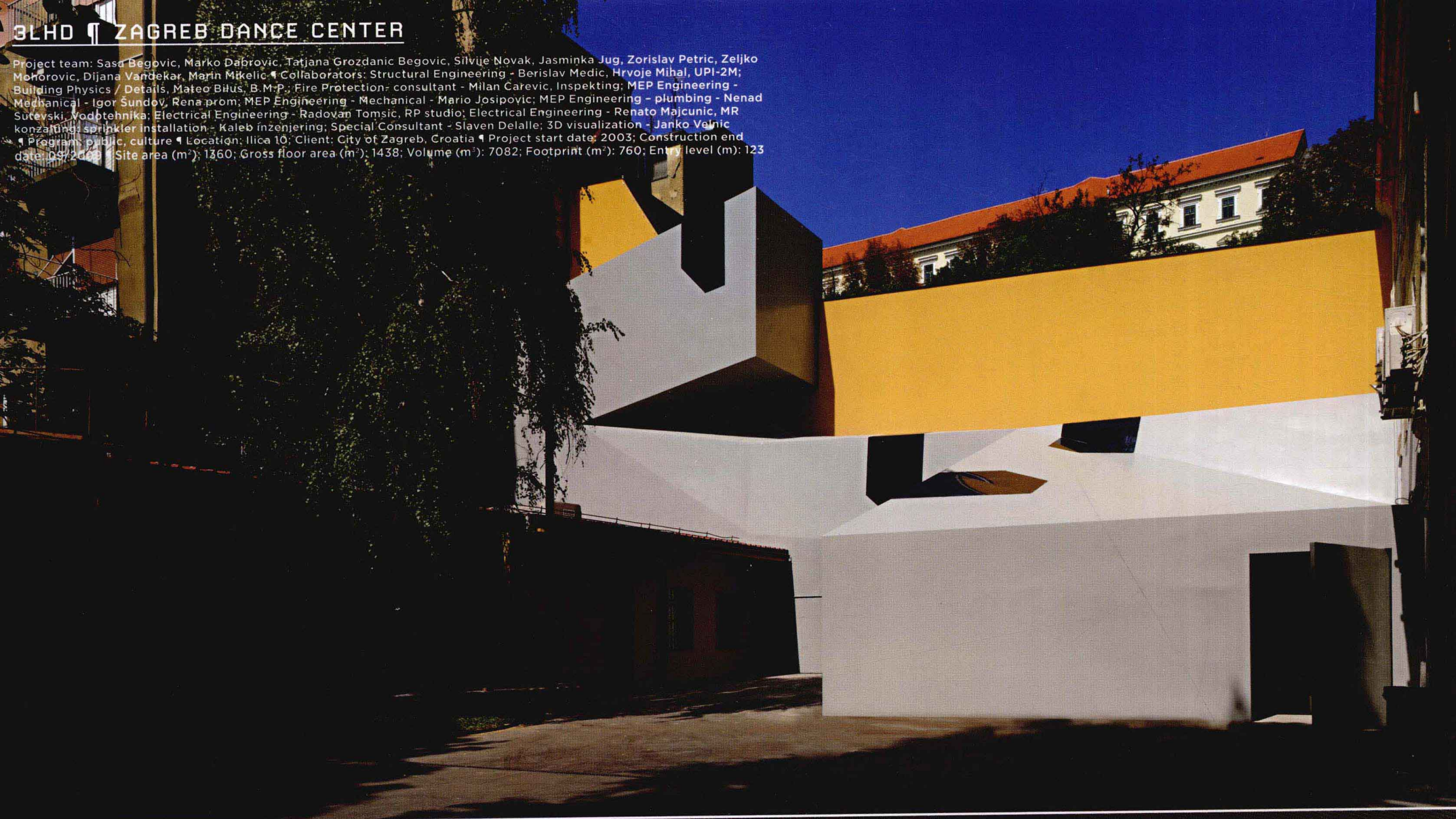
10 floor construction
 cast floor - polyurethane 3 mm
 screed 65 mm
 separating layer 0.2 mm
 expanded polystyrene impact-sound insulation EPS 40 mm
 elastic expanded polystyrene EPS-T 20 mm
 reinforced concrete slab 300 mm
 mineral wool thermal insulation 120 mm
 plaster 2 mm

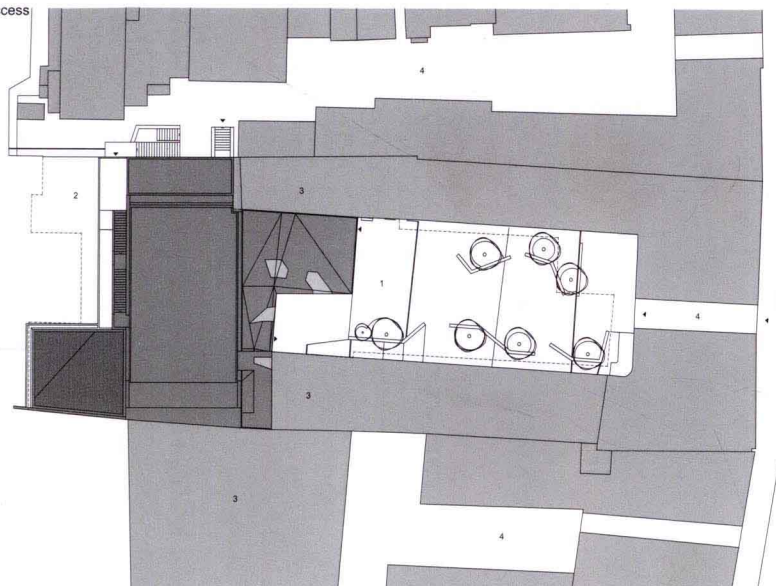
12 U-profiled glass - double glazing in aluminium frame 83mm



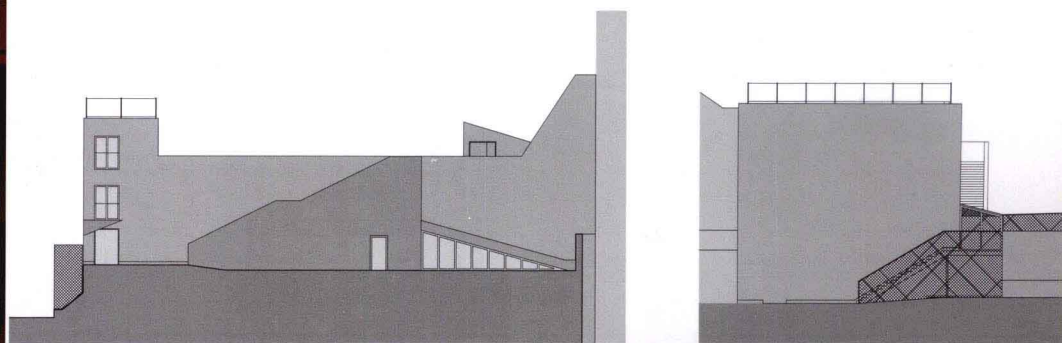
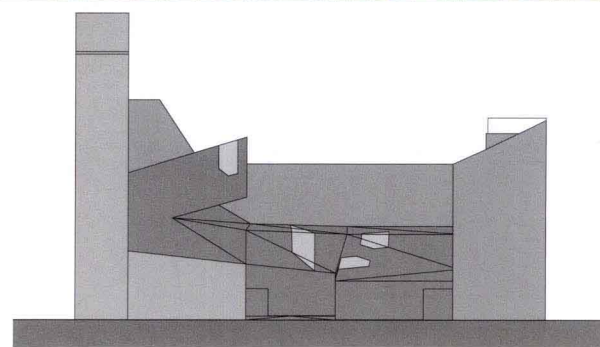






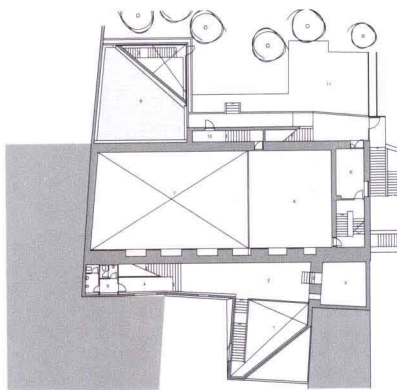


The opening of big movieplex cinemas in Zagreb has led to the dying out of old cinema theatres in the city centre. The City of Zagreb, who is the owner of the old cinema Lika, decided to reuse the space for new cultural facilities. In that scenario old cinema Lika was given the role of a new dance centre. ¶ Fifty years of contemporary dance culture in Zagreb has produced about 40 dance troops, with this project all of them will have a new home in the city centre. The cinema is located in a derelict residential block only 100 meters away from the Zagreb's main square. The entire project's program is determined by the gross developed area defined in the master plan and it places the project in the old cinema shell. The new dance centre which will house numerous dancers, choreographers, art troops and companies will have three multipurpose studios (one large studio with 150 telescopic seats and two smaller training studios), three spacious dressing rooms, bathrooms, storages for props and technology and office spaces. ¶ The only new architectural element of the centre is the new entrance lobby, a polyvalent space in the service of communication and meeting with a cafe, library and a video store. It was interpolated on the basis of almost default parameters of the existing neighbouring houses. The volume and its broken also form suggest dance movement and they are a new sign and connection element between the courtyard and the roof terrace. The roof terrace is the final element of the centre and an important part of the project of preservation and restoration of Zagreb last open roof stage.

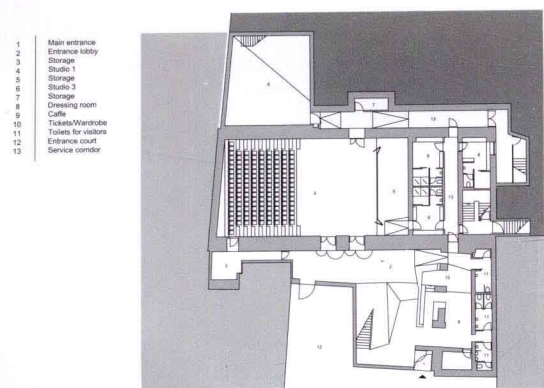
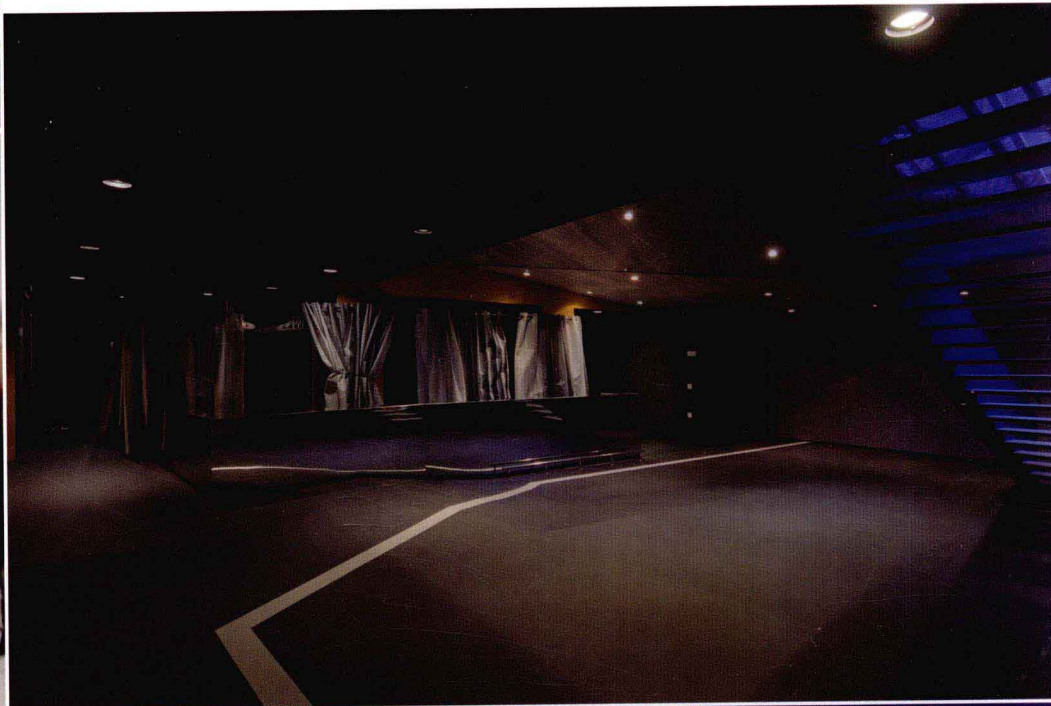
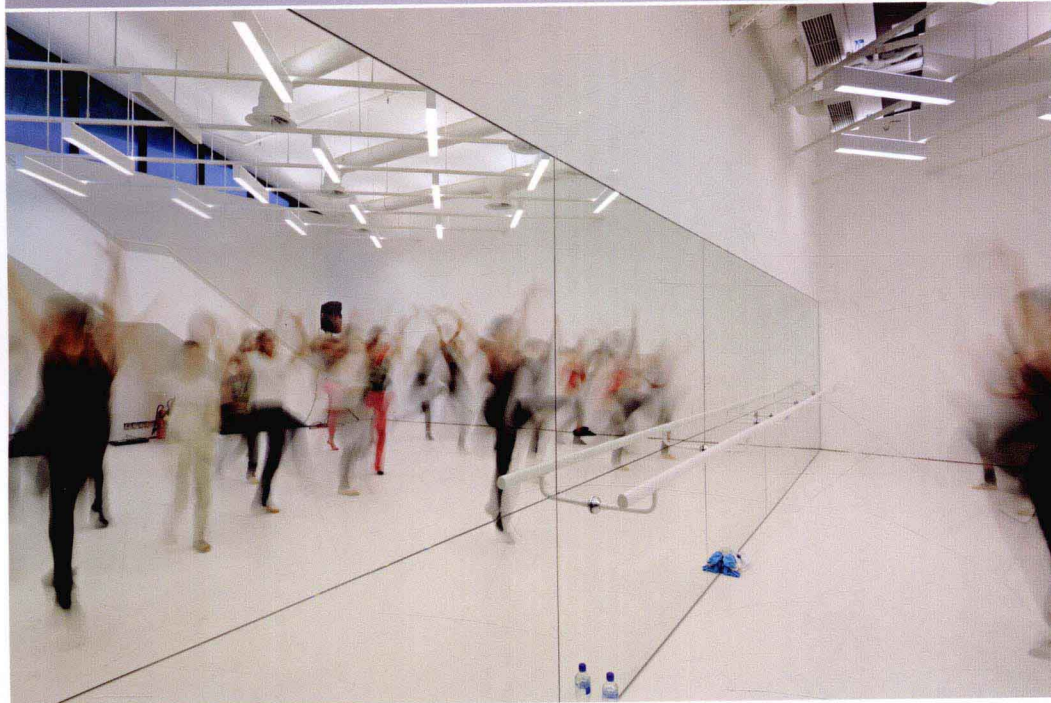
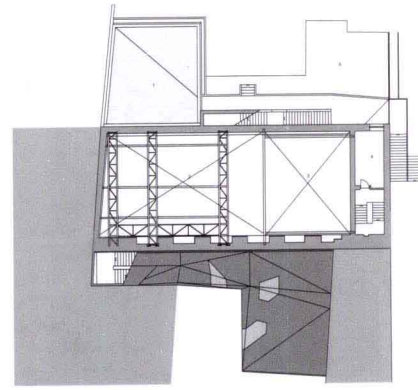




- 1 Lobby
- 2 Gallery
- 3 Media Library
- 4 Hall
- 5 Sanitary facilities
- 6 Studio 2
- 7 Studio 1
- 8 Office
- 9 Green roof
- 10 Exit
- 11 Garden



- 1 Green roof
- 2 Studio 1
- 3 Studio 2
- 4 Office
- 5 Garden



- 1 Green roof
- 2 Summer terrace "Kino Lika"
- 3 Stage
- 4 Boiler room
- 5 Cinema operator
- 6 Engine
- 7 Entrance / Exit
- 8 Exit

