

# Core Curriculum for Oncology Nursing

Editor

**JOANNE K. ITANO**

Section Editors

**Jeannine M. Brant**

**Francisco A. Conde**

**Marlon G. Saria**

**5<sup>TH</sup> EDITION**

ELSEVIER



# Core Curriculum for Oncology Nursing

Editor:

**Joanne K. Itano, RN, PhD, APRN**

Associate Professor of Nursing and  
Associate Vice President of Academic Affairs  
University of Hawaii  
Honolulu, Hawaii

Section Editors:

**Jeannine M. Brant, PhD, APRN, AOCN<sup>®</sup>, FAAN**

Oncology Clinical Nurse Specialist/Nurse Scientist  
Billings Clinic  
Billings, Montana;  
Assistant Affiliate Professor  
Montana State University  
Bozeman, Montana

**Francisco A. Conde, PhD, AOCNS<sup>®</sup>, FAAN**

Advanced Practice Registered Nurse  
Queens Medical Center—Oncology  
Honolulu, Hawaii

**Marlon G. Saria, MSN, RN, AOCNS<sup>®</sup>**

Clinical Nurse Specialist  
Moores Cancer Center  
University of California San Diego  
La Jolla, California



**5TH EDITION**

ELSEVIER

Copyright © 2016 by Elsevier Inc. All rights reserved.

*NANDA International, Inc. Nursing Diagnoses: Definitions & Classifications 2015–2017*, Tenth Edition. Edited by T. Heather Herdman and Shigemi Kamitsuru. 2014 NANDA International, Inc. Published 2014 by John Wiley & Sons, Ltd. Companion website: [www.wiley.com/go/nursingdiagnoses](http://www.wiley.com/go/nursingdiagnoses).

No part of this publication may be reproduced or transmitted in any form or by any means, electronic or mechanical, including photocopying, recording, or any information storage and retrieval system, without permission in writing from the publisher. Details on how to seek permission, further information about the Publisher's permissions policies and our arrangements with organizations such as the Copyright Clearance Center and the Copyright Licensing Agency, can be found at our website: [www.elsevier.com/permissions](http://www.elsevier.com/permissions).

This book and the individual contributions contained in it are protected under copyright by the Publisher (other than as may be noted herein).

### Notices

Knowledge and best practice in this field are constantly changing. As new research and experience broaden our understanding, changes in research methods, professional practices, or medical treatment may become necessary.

Practitioners and researchers must always rely on their own experience and knowledge in evaluating and using any information, methods, compounds, or experiments described herein. In using such information or methods they should be mindful of their own safety and the safety of others, including parties for whom they have a professional responsibility.

With respect to any drug or pharmaceutical products identified, readers are advised to check the most current information provided (i) on procedures featured or (ii) by the manufacturer of each product to be administered, to verify the recommended dose or formula, the method and duration of administration, and contraindications. It is the responsibility of practitioners, relying on their own experience and knowledge of their patients, to make diagnoses, to determine dosages and the best treatment for each individual patient, and to take all appropriate safety precautions.

To the fullest extent of the law, neither the Publisher nor the authors, contributors, or editors, assume any liability for any injury and/or damage to persons or property as a matter of products liability, negligence or otherwise, or from any use or operation of any methods, products, instructions, or ideas contained in the material herein.

Previous editions copyrighted 2005, 1998, 1992, 1987 by Oncology Nursing Society.

### Library of Congress Cataloging-in-Publication Data

Core curriculum for oncology nursing. – Fifth edition / volume editor, Joanne Itano ; section editors, Jeannine M. Brant, Francisco A. Conde, Marlon Garzo Saria.

p. ; cm.

Includes bibliographical references and index.

ISBN 978-1-4557-7626-9 (pbk. : alk. paper)

I. Itano, Joanne, editor. II. Brant, Jeannine M., editor. III. Conde, Francisco A., editor. IV. Saria, Marlon Garzo, editor

[DNLM: 1. Oncology Nursing–Outlines. WY 18.2]

RC266

616.99'40231–dc23

2014038270

*Executive Content Strategist:* Lee Henderson

*Traditional Content Development Manager:* Billie Sharp

*Associate Content Development Specialist:* Courtney Daniels

*Publishing Services Manager:* Pat Joiner

*Project Manager:* Lisa A. P. Bushey

*Senior Designer:* Margaret Reid



Working together  
to grow libraries in  
developing countries



# Rely on the definitive study and review resource for the OCN® Examination!

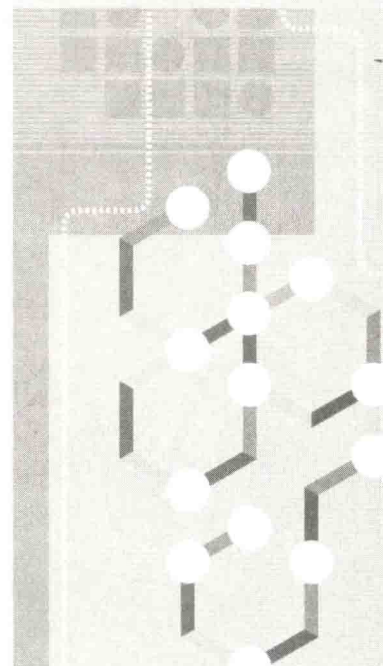
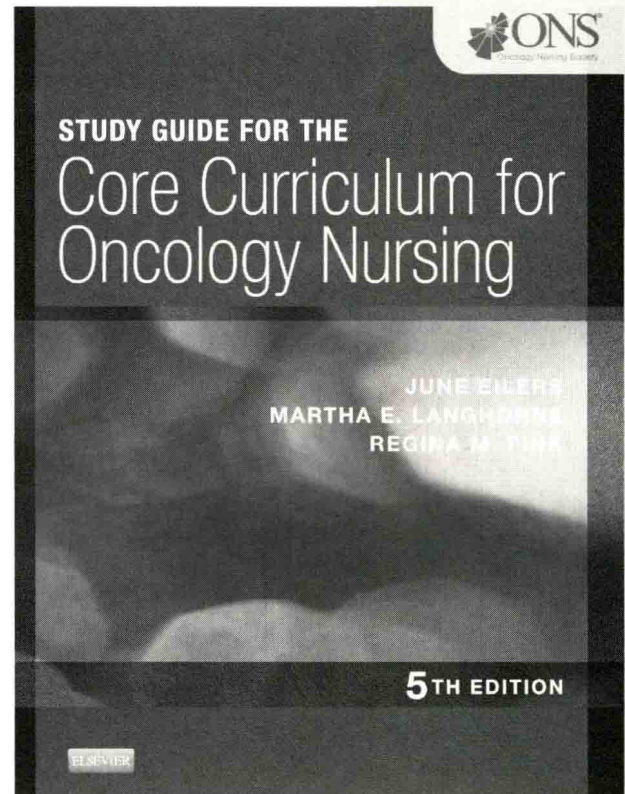
## Study Guide for the Core Curriculum for Oncology Nursing, 5th Edition

Oncology Nursing Society; written by June Eilers, PhD, ARPN, CNS, BC; Martha E. Langhorne, MSN, RN, FNP, AOCN®; and Regina M. Fink, RN, PhD, AOCN®, FAAN  
ISBN: 978-1-4557-5419-9

Get the most out of your OCN® Examination review with the valuable **Study Guide** that corresponds chapter-by-chapter to the *Core Curriculum for Oncology Nursing*, 5th Edition and to the OCN® Test Blueprint established in 2013 for versions of the examination through 2017.

- **NEW! Revised and updated content** reflects the 2013 - 2017 OCN® Test Blueprint and corresponds to the *Core Curriculum for Oncology Nursing*, 5th Edition.
- **NEW! Focus on application-level questions** provides practice in answering the types of questions featured on the OCN® Examination.
- **NEW! Updates on cancer treatment and related nursing care** include the most current and accurate information, preparing you for the OCN® Examination and for expert clinical practice.
- **NEW! Emphasis on QSEN competencies** is designed to reduce errors in oncology nursing practice with a focus on safety and evidence-based practice, with safety-related content now highlighted by new *Safety Alert* icons.
- **Developed in collaboration with the Oncology Nursing Society.**
- **Coverage of the entire scope of oncology nursing care** includes quality of life, protective mechanisms, gastrointestinal and urinary function, cardiopulmonary function, oncologic emergencies, the scientific basis for practice, health promotion, and professional performance.
- **Answer Key** includes rationales for correct and incorrect responses.

Get your copy at [evolve.elsevier.com](http://evolve.elsevier.com) today!



# Core Curriculum for Oncology Nursing

# Contributors

**Kristine Deano Abueg, RN, MSN, OCN®, CBCN**

Oncology Clinical Trials Research Nurse  
Kaiser Permanente, Oncology Clinical Trials  
Kaiser Permanente–Roseville  
Roseville, California

**Roberta Bourgon, ND**

Naturopathic Physician  
Integrative Medicine and Hematology/Oncology  
Billings Clinic  
Billings, Montana

**Jeannine M. Brant, PhD, APRN, AOCN®, FAAN**

Oncology Clinical Nurse Specialist/Nurse Scientist  
Billings Clinic  
Billings, Montana;  
Assistant Affiliate Professor  
Montana State University  
Bozeman, Montana

**Christa Braun-Inglis, MS, APRN-Rx, FNP-BC, AOCNP®**

Nurse Practitioner  
Oncology  
Kaiser Permanente  
Honolulu, Hawaii

**Kathleen A. Calzone, PhD, RN, APNG, FAAN**

Senior Nurse Specialist, Research  
National Cancer Institute  
Center for Cancer Research, Genetics Branch  
National Institutes of Health  
Bethesda, Maryland

**Dawn Camp-Sorrell, MSN, FNP, AOCN®**

Oncology Nurse Practitioner  
Nursing, Children's of Alabama  
Birmingham, Alabama

**Ellen Carr, RN, MSN, AOCN®**

Nurse Case Manager  
Head and Neck Oncology  
Moore's UCSD Cancer Center  
La Jolla, California

**Darlana D. Chadwick, MSN, MBA, RN**

Chief Operating Officer  
Hawaii Cancer Consortium  
University of Hawaii Cancer Center;  
Vice President of Patient Care  
Oncology/Neuroscience/Endoscopy/Professional Services/  
Pathology  
The Queen's Medical Center  
Honolulu, Hawaii

**Lani Kai Clinton, MD, PhD**

Resident Physician  
Pathology  
John A. Burns School of Medicine  
Honolulu, Hawaii

**Francisco A. Conde, PhD, AOCNS®, FAAN**

Advanced Practice Registered Nurse  
Queens Medical Center–Oncology  
Honolulu, Hawaii

**Diane G. Cope, PhD, ARNP, BC, AOCNP®**

Oncology Nurse Practitioner  
Florida Cancer Specialists and Research Institute  
Fort Myers, Florida

**Stacie Corcoran, RN, MS, AOCNS®**

Nurse Leader  
Survivorship Program  
Memorial Sloan-Kettering Cancer Center  
New York, New York

**Gail Wych Davidson, RN, MS, OCN®**

Regional Liver Cancer Therapy Disease Management  
Coordinator  
Surgical Oncology  
The Arthur G. James Cancer Hospital and Richard J. Solove  
Research Institute  
Columbus, Ohio

**Lisa Dyk, RN, BSN, OCN®**

Inpatient Cancer Care  
Billings Clinic  
Billings, Montana

**Denice Economou, RN, MN, AOCN®**

Assistant Clinical Professor  
School of Nursing–UCLA  
Los Angeles, California;  
Senior Research Assistant/Project Director  
Nursing Research and Education–City of Hope  
Duarte, California

**Julie Eggert, PhD, GNP-BC, AOCN®**

Professional and Healthcare Genetics Doctoral Program  
Coordinator  
School of Nursing, Health, Education and Human Development  
Clemson University  
Clemson, South Carolina;  
Advanced Practice Nurse  
Cancer Risk Screening Program  
Upstate Oncology Associates  
Bon Secours St. Francis Hospital  
Greenville, South Carolina



## **viii CONTRIBUTORS**

### **Marie Flannery, RN, PhD, AOCN®**

Assistant Professor  
School of Nursing and Wilmot Cancer Center  
University of Rochester  
Rochester, New York

### **Nanette C. Fong, RN, MSN, ONP**

Neuro-Oncology Nurse Practitioner  
Neuro-Oncology-UCLA  
Los Angeles, California

### **Elizabeth A. Freitas, RN, MS, OCN®, ACHPN**

Adjunct Clinical Faculty  
School of Nursing and Dental Hygiene  
University of Hawaii at Manoa;  
Clinical Nurse Specialist  
Pain and Palliative Care  
The Queen's Medical Center  
Honolulu, Hawaii

### **Jacqueline J. Glover, PhD**

Professor  
Department of Pediatrics and the Center for Bioethics and  
Humanities  
University of Colorado Anschutz Medical Campus  
Aurora, Colorado

### **Carrie Graham, RN, MSN, ARNP**

Nurse Practitioner/Teaching Associate  
Department of Neurology/Division of Neuro-Oncology  
University of Washington  
Seattle, Washington

### **Stacey Danielle Green, MSN, GNP-BC, AOCNP®**

Lecturer, Assistant Clinical Professor  
Advanced Practice-Acute Care  
Adult/Gerontology  
UCLA School of Nursing;  
Nurse Practitioner  
Neuro-Oncology-UCLA  
Los Angeles, California

### **Debra E. Heidrich, MSN, RN, ACHPN, AOCN®**

Palliative Care Nursing Consultant  
West Chester, Ohio

### **Dawn Hew, BSN, RN, OCN®**

Registered Nurse  
The Queen's Medical Center  
Honolulu, Hawaii

### **Lori Johnson, RN, MSN, OCN®**

Clinical Nurse Educator  
Nursing Education, Development, and Research  
UC San Diego Health System  
San Diego, California

### **Brenda Keith, RN, MN, AOCNS®**

Senior Oncology Clinical Coordinator II  
BioOncology  
Genentech  
South San Francisco, California

### **HaNa Kim, PhD**

Clinical Health Psychology Fellow  
Behavioral Health  
Tripler Army Medical Center  
Honolulu, Hawaii

### **Angela D. Klimaszewski, MSN, RN**

Technical Content Editor  
Publications  
Oncology Nursing Society  
Pittsburgh, Pennsylvania

### **Sandra Kurtin, RN, MS, AOCN®, ANP**

Clinical Assistant Professor of Medicine and Nursing  
Hematology/Oncology  
The University of Arizona Cancer Center  
Tucson, Arizona

### **Sally L. Maliski, PhD, RN, FAAN**

Associate Dean for Academic and Student Affairs  
Associate Professor  
School of Nursing and David Geffen School of Medicine  
Department of Urology-UCLA  
Los Angeles, California

### **Kristen W. Maloney, MSN, RN, AOCNS®**

Clinical Nurse Specialist  
Oncology Nursing  
The Hospital of the University of Pennsylvania  
Philadelphia, Pennsylvania

### **Leslie V. Matthews, RN, MS, ANP, AOCNP®**

Nurse Practitioner  
Medical Oncology  
Memorial Sloan-Kettering Cancer Center  
New York, New York

### **Candis Morrison, PhD, CRNP**

Nurse Practitioner  
Division of Hematology  
Johns Hopkins Bayview Medical Center  
Baltimore, Maryland

### **Kathleen Murphy-Ende, RN, PhD, PsyD, AOCNP®**

Medical Psychologist and Nurse Practitioner  
Palliative-Supportive Care  
Meriter Hospital  
Madison, Wisconsin

### **Leslie Nelson, RN, MSN, AOCNS®**

Nurse Manager  
Phoenix Office/Ironwood  
Cancer and Research Centers  
Phoenix, Arizona

### **Paula Nelson-Marten, PhD, RN, AOCN®**

Associate Professor  
College of Nursing  
University of Colorado  
Anschutz Medical Campus  
Aurora, Colorado

**Patricia W. Nishimoto, BSN, MPH, DNS**

Adult Oncology Clinical Nurse Specialist  
Department of Medicine, Hematology/Oncology  
Tripler Army Medical Center  
Honolulu, Hawaii

**Judy Petersen, RN, MN, AOCN®**

Oncology Nurse Educator  
National Cancer Institute's Cancer Information  
Service  
Fred Hutchinson Cancer Research Center  
Seattle, Washington

**Jan Petree, RN, MS, FNP, AOCN®**

Nurse Practitioner  
Medical Breast Oncology, Survivorship Clinic  
Women's Cancer Center  
Stanford Hospital and Clinics  
Stanford, California

**Julie Ponto, PhD, RN, ACNS-BC, AOCNS®**

Professor  
Graduate Programs in Nursing  
Winona State University–Rochester  
Rochester, Minnesota

**Krista M. Rubin, MS, FNP-BC**

Nurse Practitioner  
Center for Melanoma  
Massachusetts General Hospital  
Boston, Massachusetts

**Michelle Lynne Russell, RN-C, BSN, OCN®**

Clinical Nurse Case Manager  
Department of Radiation Medicine and Applied  
Sciences  
Rebecca and John Moores Comprehensive Cancer  
Center  
University of California–San Diego  
La Jolla, California

**Kristi V. Schmidt, RN, MN**

Clinical Oncology Specialist  
Cenentech  
South San Francisco, California

**Terry Wilke Shapiro, RN, MSN, CRNP**

Nurse Practitioner  
Stem Cell Transplant Program  
Division of Pediatric Hematology Oncology  
Penn State University/Penn State Children's Hospital  
Hershey, Pennsylvania

**Brenda K. Shelton, MS, RN, CCRN, AOCN®**

Associate Faculty  
Acute and Chronic Adult Health  
Johns Hopkins University School of Nursing;  
Clinical Nurse Specialist  
Oncology, Johns Hopkins Hospital  
Baltimore, Maryland;  
Nurse Surveyor  
Joint Commission International  
Oakbrook, Illinois

**Mady C. Stovall, RN, MSN, ANP-BC**

Neuro-Oncology Nurse Practitioner  
Department of Neurosurgery  
Kaiser Permanente–Northern California  
Redwood City, California

**Cathleen Sugarman, RN, MSN, AOCNS®**

Advanced Practice Nurse  
Oncology Clinical Care Line  
Scripps Memorial Hospital–La Jolla  
La Jolla, California

**Geline Joy Tamayo, MSN, ACNS-BC, OCN®**

Advanced Practice Program Director  
Moores Cancer Center  
UC San Diego Health System  
La Jolla, California

**Susan Vogt Temple, RN, MSN, AOCN®**

Oncology Nurse Educator  
Boehringer-Ingelheim Oncology  
Boehringer-Ingelheim Pharmaceuticals, Inc.  
Danbury, Connecticut

**Jennifer Alisangco Tschanz, RN, MSN, FNP, AOCNP®**

Nurse Practitioner  
Department of Hematology Oncology  
Naval Medical Center San Diego  
San Diego, California

**Gabriele Brunhart Tsung, RN, MSN, ANP-BC**

Nurse Practitioner  
Neurology–UCLA  
Los Angeles, California

**Kenneth Utz, PharmD, BCOP**

Adjunct Clinical Professor  
Skaggs School of Pharmacy  
University of Montana  
Missoula, Montana;  
Lead Clinical Pharmacist  
Pharmacy at the Billings Clinic  
Billings, Montana

**Carol Viele, RN, MS, OCN®**

Associate Clinical Professor  
Department of Physiology Nursing  
University of California–San Francisco  
San Francisco, California

**Wendy H. Vogel, MSN, FNP, AOCNP®**

Oncology Nurse Practitioner  
Wellmont Cancer Institute  
Kingsport, Tennessee

**Kathryn Renee Waitman, DNP, FNP-C, AOCNP®**

Nurse Practitioner  
Oncology  
Billings Clinic  
Billings, Montana



## **x CONTRIBUTORS**

### **Deborah Kirk Walker, DNP, CRNP, AOCN®**

Assistant Professor  
School of Nursing–University of Alabama at Birmingham;  
Nurse Practitioner  
Hematology/Oncology  
Comprehensive Cancer Center at the Kirklin Clinic  
University of Alabama at Birmingham  
Birmingham, Alabama

### **Amy Walton, RN, BSN, OCN®, CMSRN**

Oncology Nurse  
Inpatient Cancer Care  
Billings Clinic  
Billings, Montana

### **Tracy Webb Warren, RN, BSN, OCN®**

Infusion Charge Nurse, Clinical Nurse–Outpatient  
The Woodlands Regional Care Center  
University of Texas MD Anderson Cancer Center  
Houston, Texas

### **Rita Wickham, PhD, RN, AOCN®**

Adjunct Faculty  
Adult Health Nursing  
Rush College of Nursing  
Chicago, Illinois;  
Consultant  
RSW Consulting LLC  
Rapid River, Michigan

# Reviewers

**Karen J. Abbas, MS, RN, AOCN®**

Oncology Clinical Nurse Specialist  
University of Rochester Medical Center  
Rochester, New York

**Paula J. Anastasia, RN, MN, AOCN®**

Gyn-Oncology Clinical Nurse Specialist  
Cedars-Sinai Medical Center  
Los Angeles, California

**Tara Baney, CRNP, HS, ANP-BC, AOCN®**

Nurse Practitioner  
Cancer Care Partnership  
Penn State–Hershey Cancer Institute  
State College, Pennsylvania

**Heather Belansky, MSN, RN**

Clinical Trial Educator  
Quintiles  
Pittsburgh, Pennsylvania

**Ashley Leak Bryant, PhD, RN-BC, OCN®**

Assistant Professor  
School of Nursing  
The University of North Carolina at Chapel Hill  
Chapel Hill, North Carolina

**Darcy Burbage, RN, MSN, AOCN®, CBCN**

Nurse Navigator  
Helen F. Graham Cancer Center and Research Institute  
Newark, Delaware

**Kathleen D. Burns, MSN, RN, OCN®**

Nurse Manager, Radiation Oncology  
Hartford Hospital  
Hartford, Connecticut

**Susan DeCristofaro, RN, MSN, OCN®**

Professional Advancement Coordinator  
Boston Medical Center;  
Dana Farber Cancer Institute;  
Mass College of Pharmacy School of Nursing;  
Boston, Massachusetts

**Seth Eisenberg, RN, ASN, OCN®, BMTCN**

Professional Practice Coordinator  
Infusion Services  
Seattle Cancer Care Alliance  
Seattle, Washington

**Beth Faiman, PhD, MSN, APN-BC, AOCN®**

Nurse Practitioner  
Cleveland Clinic  
Cleveland, Ohio

**Michele E. Gaguski, MSN, RN, AOCN®,  
CHPN, APN-C**

Clinical Director, Medical Oncology/Infusion Services  
Atlanticare Cancer Care Institute  
Egg Harbor Township, New Jersey

**Catherine Glennon, RN, MHS, OCN®, NE-BC**

Director of Nursing, Cancer Center  
The University of Kansas Hospital  
Kansas City, Kansas

**Marcelle Kaplan, RN, MS, AOCN®, CBCN®**

Advanced Practice Oncology Nurse Consultant and Editor  
Merrick, New York

**Valerie Kogut, MA, RD, LDN, CTTS**

Nutrition Instructor  
University of Pittsburgh School of Nursing  
Pittsburgh, Pennsylvania

**Denise Scott Korn, MSN, RN, OCN®**

Education Specialist II  
High Point Regional Health UNC Health Care  
High Point, North Carolina

**Joan Such Lockhart, PhD, RN, CORLN, AOCN®, CNE,  
ANEF, FAAN**

Clinical Professor  
Associate Dean for Academic Affairs  
Duquesne University School of Nursing  
Pittsburgh, Pennsylvania

**Suzanne M. Mahon, RN, DNSc, AOCN®, APNG**

Professor  
Internal Medicine;  
School of Nursing;  
Saint Louis University  
St. Louis, Missouri

**Sandra A. Mitchell, PhD, CRNP, AOCN®**

Research Scientist  
Outcomes Research Branch, Applied Research Program  
Division of Cancer Control and Population Sciences  
National Cancer Institute  
Bethesda, Maryland



**Kimberly A. Rumsey, RN, MSN, OCN®**

Professor  
Lone Star College-Tomball  
Tomball, Texas;  
Houston Methodist Willowbrook Hospital  
Houston, Texas        -

**Dominique Srdanovic, RN, MA, OCN®**

Genitourinary Nurse Navigator  
Supervisor, Oncology Nurse Navigation  
Stamford Hospital  
Bennett Cancer Center  
Stamford, Connecticut

**Carole S. Viele, RN, MS, OCN®**


Clinical Nurse Specialist  
Associate Clinical Professor  
Department of Physiological Nursing  
UCSF School of Nursing  
San Francisco, California

**Michele A. B. Voss, RN, BSN, OCN®**

Blood and Marrow Transplant Coordinator  
Saint Louis University Hospital  
St. Louis, Missouri

# Preface

On behalf of the section editors, Jeannine Brant, Francisco Conde, Marlon Saria, and myself, we are pleased to bring you the fifth edition of the *Core Curriculum for Oncology Nursing*. It has been 10 years since the previous edition, and this volume has been updated to reflect the many changes in the practice of oncology nursing since that time.

As in previous editions, the OCN<sup>®</sup> Test Blueprint is the organizing framework for the text. Sections and chapters reflect specific portions of the Test Blueprint. One of the major uses of this text is to prepare for the OCN<sup>®</sup> test. Most chapters start with an overview to provide the background knowledge necessary for the specific content area, followed by sections on assessment, problem statements and outcomes specific to the problem statements, a planning and implementation section, concluding with an evaluation statement. The easy-to-use outline format has been retained in this edition. An emphasis on QSEN competencies is designed to reduce errors in oncology nursing practice with a focus on safety and evidence-based practice. Safety-related content has been highlighted through new *Safety Alert* icons. 

The content of the chapters has been updated to reflect the new discoveries in genetics, molecular biology of cancer, new drugs for new targets, changes and controversies in cancer screening, the recognition of the expanding numbers of survivors of cancer, and the important role navigators play in the continuity of care for patients and families with cancer. Some of the content has been reorganized based on the current 2013 – 2017 OCN<sup>®</sup> Test Blueprint,

and two new chapters, *Research Protocols and Clinical Trials* and *Coping Mechanisms and Skills*, have been added.

Among the recommendations of the 2013 Institute of Medicine (IOM) report, *Delivering High-Quality Cancer Care: Charting a New Course for a System in Crisis*, is the need for an adequately staffed, trained, and coordinated workforce. The report sets a goal that all individuals caring for cancer patients should have appropriate core competencies.

The Oncology Nursing Society (ONS) has been a leader in the nursing profession in establishing certification programs that formally recognize oncology nurses' specialized knowledge, skills, and expertise. To meet this IOM goal, nursing should focus on increasing the number of oncology-certified nurses and promoting the role of institutions in requiring certification. We believe this textbook will help nurses with appropriate oncology experience prepare successfully for the OCN<sup>®</sup> certification examination.

Our thanks to ONS for providing us the opportunity to revise and update this text. We want to recognize our long-time colleague, Barbara Sigler, former Director of Commercial Publications at ONS, who guided the initial process of several editions of the *Core Curriculum*. Our special thanks to Lee Henderson and Courtney Daniels of Elsevier. They have been a joy and an efficient team to work with. Finally, we thank the contributors whose expertise is what makes this book the valuable resource it is.

*Aloha,*  
*Joanne Itano*



# Contents

## **PART 1** **Health Promotion, Screening, and Early Detection**

- 1 Epidemiology, Prevention, and Health Promotion, 1
- 2 Screening and Early Detection, 11

## **PART 2** **Scientific Basis for Practice**

- 3 Carcinogenesis, 24
- 4 Immunology, 39
- 5 Genetic Risk Factors, 44
- 6 Research Protocols and Clinical Trials, 62
- 7 Breast Cancer, 71
- 8 Lung Cancer, 81
- 9 Cancers of the Gastrointestinal Tract, 90
- 10 Cancers of the Reproductive System, 103
- 11 Cancers of the Urinary System, 117
- 12 Skin Cancer, 132
- 13 Head and Neck Cancers, 139
- 14 Cancers of the Neurologic System, 153
- 15 Leukemia, 166
- 16 Lymphoma and Multiple Myeloma, 173
- 17 Bone and Soft Tissue Cancers, 182
- 18 HIV-Related Cancers, 189

## **PART 3** **Treatment Modalities**

- 19 Nursing Implications of Surgical Treatment, 204
- 20 Nursing Implications of Blood and Marrow Transplant, 212
- 21 Nursing Implications of Radiation Therapy, 226
- 22 Nursing Implications of Chemotherapy, 237
- 23 Nursing Implications of Targeted Therapies and Biotherapy, 251
- 24 Nursing Implications of Support Therapies and Procedures, 268

## **PART 4** **Symptom Management**

- 25 Pharmacologic Interventions, 282
- 26 Complementary and Integrative Modalities, 315

- 27 Alterations in Hematologic and Immune Function, 322
- 28 Alterations in Gastrointestinal Function, 340
- 29 Alterations in Genitourinary Function, 363
- 30 Alterations in Musculoskeletal, Integumentary, and Neurologic Functions, 370
- 31 Alterations in Respiratory Function, 382
- 32 Alterations in Cardiovascular Function, 393
- 33 Alterations in Nutritional Status, 404
- 34 Comfort, 418

## **PART 5** **Psychosocial Dimensions of Care**

- 35 Cultural, Spiritual, and Religious Diversity, 436
- 36 Altered Body Image, 443
- 37 Coping Mechanisms and Skills, 447
- 38 Psychosocial Disturbances and Alterations, 456
- 39 Sexuality, 467

## **PART 6** **Oncologic Emergencies**

- 40 Metabolic Emergencies, 478
- 41 Structural Emergencies, 495

## **PART 7** **Survivorship**

- 42 Survivorship, 509

## **PART 8** **Palliative and End-of-Life Care**

- 43 Palliative and End-of-Life Care, 515

## **PART 9** **Professional Practice**

- 44 Evidence-Based Practice and Standards of Oncology Nursing, 531
- 45 Education Process, 541
- 46 Legal Issues, 546
- 47 Ethical Issues, 552
- 48 Professional Issues, 561

# Contents

## **PART 1** **Health Promotion, Screening, and Early Detection**

- 1** Epidemiology, Prevention, and Health Promotion, 1  
**Francisco A. Conde**  
    Overview, 1  
    Assessment, 8  
    Problem statements and outcome identification, 8  
    Planning and implementation, 8  
    Evaluation, 9  
    References, 9
- 2** Screening and Early Detection, 11  
**Candis Morrison**  
    Overview, 11  
    Assessment, 19  
    Problem statements and outcome identification, 22  
    Planning and implementation, 22  
    Evaluation, 22  
    References, 22

## **PART 2** **Scientific Basis for Practice**

- 3** Carcinogenesis, 24  
**Jennifer Alisangco Tschanz and Cathleen Sugarman**  
    Theory, 24  
    References, 37
- 4** Immunology, 39  
**Kristi V. Schmidt and Tracy Webb Warren**  
    Overview, 39  
    References, 43
- 5** Genetic Risk Factors, 44  
**Kathleen A. Calzone and Julie Eggert**  
    Overview, 44  
    Nursing implications, 59  
    References, 60
- 6** Research Protocols and Clinical Trials, 62  
**Angela D. Klimaszewski**  
    Research Protocols, 62  
        Overview, 62  
    Clinical Trials, 68  
        Theory, 68  
        Problem statements and outcome identification, 69  
        Planning and implementation, 69  
    References, 69
- 7** Breast Cancer, 71  
**Jan Petree**  
    References, 79
- 8** Lung Cancer, 81  
**Marie Flannery**  
    Overview, 81  
    References, 89

- 9** Cancers of the Gastrointestinal Tract, 90  
**Christa Braun-Inglis**  
    References, 101
- 10** Cancers of the Reproductive System, 103  
**Susan Vogt Temple**  
    Cervical Cancer, 103  
    Endometrial Cancer, 106  
    Ovarian Cancer, 108  
    Gestational Trophoblastic Neoplasia, 110  
    Vulvar Cancer, 111  
    Vaginal Cancer, 111  
    Testicular Cancer, 112  
    Penile Cancer, 113  
    List of Resources, 114  
    References, 115
- 11** Cancers of the Urinary System, 117  
**Sally L. Maliski**  
    Kidney Cancer, 117  
    Bladder Cancer, 122  
    Prostate Cancer, 126  
    References, 130
- 12** Skin Cancer, 132  
**Krista M. Rubin**  
    Overview, 132  
    References, 138
- 13** Head and Neck Cancers, 139  
**Ellen Carr**  
    References, 151
- 14** Cancers of the Neurologic System, 153  
**Mady C. Stovall, Nanette C. Fong, Carrie Graham, Stacey Danielle Green, and Gabriele Brunhart Tsung**  
    Overview, 153  
    References, 164
- 15** Leukemia, 166  
**Dawn Hew and Francisco A. Conde**  
    References, 172
- 16** Lymphoma and Multiple Myeloma, 173  
**Judy Petersen**  
    References, 180
- 17** Bone and Soft Tissue Cancers, 182  
**Ellen Carr**  
    Overview, 182  
    References, 188
- 18** HIV-Related Cancers, 189  
**Brenda K. Shelton**  
    Overview, 189  
    References, 201



**PART 3****Treatment Modalities****19 Nursing Implications of Surgical Treatment, 204****Gail Wych Davidson***Overview, 204**Assessment, 207**Problem statements and outcome  
identification, 209**Planning and implementation, 209**Evaluation, 210**References, 210***20 Nursing Implications of Blood and Marrow  
Transplantation, 212****Terry Wilke Shapiro***Overview, 212**Assessment, 219**Problem statements and outcome  
identification, 220**Planning and implementation, 220**Evaluation, 224**References, 224***21 Nursing Implications of Radiation Therapy, 226****Michelle Lynne Russell***Overview, 226**Assessment, 231**Nursing diagnoses, 232**Planning and implementation, 232**Evaluation, 235**Additional resources, 235**References, 235***22 Nursing Implications of Chemotherapy, 237****Susan Vogt Temple***Overview, 237**Assessment, 243**Nursing diagnoses, 243**Planning and implementation, 244**Evaluation, 249**References, 249***23 Nursing Implications of Targeted Therapies and  
Biotherapy, 251****Brenda Keith and Kristine Deano Abueg***Overview, 251**Assessment, 261**Problem statements and outcome  
identification, 262**Planning and implementation, 263**Evaluation, 265**References, 265***24 Nursing Implications of Support Therapies and  
Procedures, 268****Dawn Camp-Sorrell***Blood Component Therapy, 268**Overview, 268**Assessment, 268**Problem statements and outcome  
identification, 270**Planning and implementation, 270**Evaluation, 272**Access Devices—Venous, Arterial, Peritoneal,  
Intraventricular, and Epidural or Intrathecal, 272**Overview, 272**Assessment, 276**Problem statements and outcome  
identification, 277**Planning and implementation, 277**Evaluation, 278**Infusion Systems, 278**Overview, 278**Assessment, 279**Problem statements and outcome  
identification, 279**Planning and implementation, 279**Evaluation, 280**References, 280***PART 4****Symptom Management****25 Pharmacologic Interventions, 282****Kenneth Utz and Carol Vile***Antimicrobials, 282**Overview, 282**Assessment, 286**Nursing diagnoses and outcome identification, 286**Planning and implementation, 287**Evaluation, 287**Anti-inflammatory Agents, 287**Overview, 287**Assessment, 287**Nursing diagnoses and expected outcomes, 291**Planning and implementation, 291**Evaluation, 291**Antiemetic Therapy, 291**Overview, 291**Assessment, 294**Nursing diagnoses and expected outcomes, 294**Planning and implementation, 294**Evaluation, 294**Analgesics, 297**Overview, 297**Assessment, 300**Nursing diagnoses and expected outcomes, 302**Planning and implementation, 302**Evaluation, 302**Psychotropic Drugs: Anxiolytics and**Sedative/Hypnotics, 302**Overview, 302**Assessment, 304**Nursing diagnoses and expected outcomes, 304**Planning and implementation, 305**Evaluation, 305**Antidepressants, 305**Overview, 305**Assessment, 307*

- Nursing diagnoses and expected outcomes, 307*
  - Planning and implementation, 307*
  - Evaluation, 307*
- Anticonvulsants, 308
  - Overview, 308*
  - Assessment, 309*
  - Nursing diagnoses, 309*
  - Planning and implementation, 309*
  - Evaluation, 309*
- Hematopoietic Growth Factors, 310
  - Overview, 310*
  - Assessment, 311*
  - Nursing diagnoses and expected outcomes, 313*
  - Planning and implementation, 313*
  - Evaluation, 313*
- References, 313
- 26 Complementary and Integrative Modalities, 315**
  - Lori Johnson and Roberta Bourgon**
    - Overview, 315*
    - Assessment, 320*
    - Problem statements and outcome identification, 320*
    - Planning and implementation, 320*
    - Evaluation, 321*
  - References, 321
- 27 Alterations in Hematologic and Immune Function, 322**
  - Sandra Kurtin**
    - Overview, 322*
  - Neutropenia, 322
    - Overview, 322*
    - Assessment, 327*
    - Problem statements and outcome identification, 327*
    - Planning and implementation, 327*
    - Evaluation, 328*
  - Anemia, 328
    - Overview, 328*
    - Assessment, 330*
    - Problem statements and outcome identification, 330*
    - Planning and implementation, 330*
    - Evaluation, 331*
  - Thrombocytopenia, 331
    - Overview, 331*
    - Assessment, 333*
    - Problem statements and outcome identification, 333*
    - Planning and implementation, 333*
    - Evaluation, 334*
  - Infection, 334
    - Overview, 334*
    - Assessment, 335*
    - Problem statements and outcome identification, 335*
    - Planning and implementation, 335*
    - Evaluation, 335*
  - Hemorrhage, 335
    - Overview, 335*
  - Assessment, 336
    - Problem statements and outcome identification, 336*
    - Planning and implementation, 336*
    - Evaluation, 336*
  - Fever and Chills, 336
    - Overview, 336*
    - Assessment, 337*
    - Problem statements and outcome identification, 337*
    - Planning and implementation, 337*
    - Evaluation, 338*
  - References, 338
- 28 Alterations in Gastrointestinal Function, 340**
  - Leslie Nelson**
    - Xerostomia, 340
      - Overview, 340*
      - Assessment, 341*
      - Problem statements and outcome identification, 341*
      - Planning and implementation, 341*
      - Evaluation, 342*
    - Dysphagia, 342
      - Overview, 342*
      - Assessment, 343*
      - Problem statements and outcome identification, 343*
      - Planning and implementation, 343*
      - Evaluation, 344*
    - Mucositis or Esophagitis, 344
      - Overview, 344*
      - Assessment, 346*
      - Problem statements and outcome identification, 346*
      - Planning and implementation, 347*
      - Evaluation, 347*
    - Nausea and Vomiting, 347
      - Overview, 347*
      - Assessment, 349*
      - Problem statements and outcome identification, 349*
      - Planning and implementation, 349*
      - Evaluation, 350*
    - Ascites, 350
      - Overview, 350*
      - Assessment, 350*
      - Problem statements and outcome identification, 351*
      - Planning and implementation, 351*
      - Evaluation, 351*
    - Constipation, 351
      - Overview, 351*
      - Assessment, 352*
      - Problem statements and outcome identification, 352*
      - Planning and implementation, 353*
      - Evaluation, 353*
    - Diarrhea, 354
      - Overview, 354*



- Assessment, 354
  - Problem statements and outcome identification, 355
  - Planning and implementation, 356
  - Evaluation, 356
- Bowel Obstruction, 356
  - Overview, 356
  - Assessment, 357
  - Problem statements and outcome identification, 358
  - Planning and implementation, 358
  - Evaluation, 359
- Bowel Ostomies, 359
  - Overview, 359
  - Assessment, 360
  - Problem statements and outcome identification, 360
  - Planning and implementation, 360
  - Evaluation, 361
- References, 361
- 29 Alterations in Genitourinary Function, 363**
  - Sally L. Maliski**
  - Urinary Incontinence, 363
    - Overview, 363
    - Assessment, 364
    - Problem statements and outcome identification, 365
    - Planning and implementation, 365
    - Evaluation, 365
  - Ostomies and Urinary Diversions, 366
    - Overview, 366
    - Assessment, 366
    - Problem statements and outcome identification, 366
    - Planning and implementation, 366
    - Evaluation, 367
  - Renal Dysfunction, 367
    - Overview, 367
    - Assessment, 368
    - Problem statements and outcome identification, 368
    - Planning and implementation, 368
    - Evaluation, 369
  - References, 369
- 30 Alterations in Musculoskeletal, Integumentary, and Neurologic Functions, 370**
  - Kathryn Renee Waitman**
  - Alterations in Musculoskeletal Functions, 370
    - Overview, 370
    - Assessment, 370
    - Problem statements and outcome identification, 371
    - Planning and implementation, 371
    - Evaluation, 371
  - Alterations in Integumentary Function, 371
    - Overview, 371
    - Assessment, 372
    - Problem statements and outcome identification, 375
  - Planning and implementation, 375
  - Evaluation, 376
- Neuropathies, 376
  - Overview, 376
  - Assessment, 377
  - Problem statements and outcome identification, 378
  - Planning and implementation, 378
  - Evaluation, 379
- Alterations in Mental Status, 379
  - Overview, 379
  - Assessment, 379
  - Problem statements and outcome identification, 380
  - Planning and implementation, 380
  - Evaluation, 380
- References, 381
- 31 Alterations in Respiratory Function, 382**
  - Leslie V. Matthews**
  - Anatomic or Surgical Alterations, 382
    - Overview, 382
    - Assessment, 382
    - Problem statements and outcome identification, 383
    - Planning and implementation, 383
    - Evaluation, 384
  - Pulmonary Toxicity Related to Cancer Therapy, 384
    - Overview, 384
    - Assessment, 384
    - Problem statements and outcome identification, 386
    - Planning and implementation, 386
    - Evaluation, 386
  - Dyspnea, 386
    - Overview, 386
    - Assessment, 387
    - Problem statements and outcome identification, 387
    - Planning and implementation, 387
    - Evaluation, 388
  - Pleural Effusions, 388
    - Overview, 388
    - Assessment, 388
    - Problem statements and outcome identification, 389
    - Planning and implementation, 389
    - Evaluation, 391
  - References, 391
- 32 Alterations in Cardiovascular Function, 393**
  - Deborah Kirk Walker**
  - Lymphedema, 393
    - Overview, 393
    - Assessment, 393
    - Problem statements and outcome identification, 394
    - Planning and implementation, 394
    - Evaluation, 395