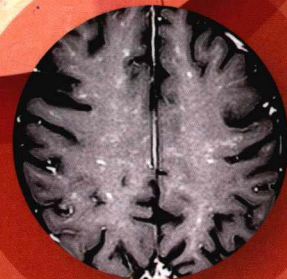
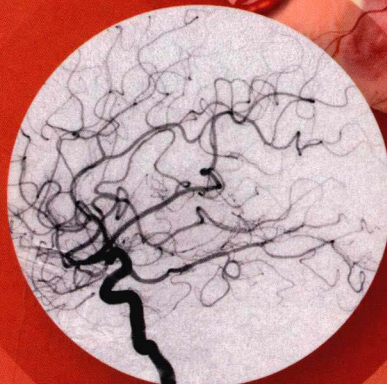
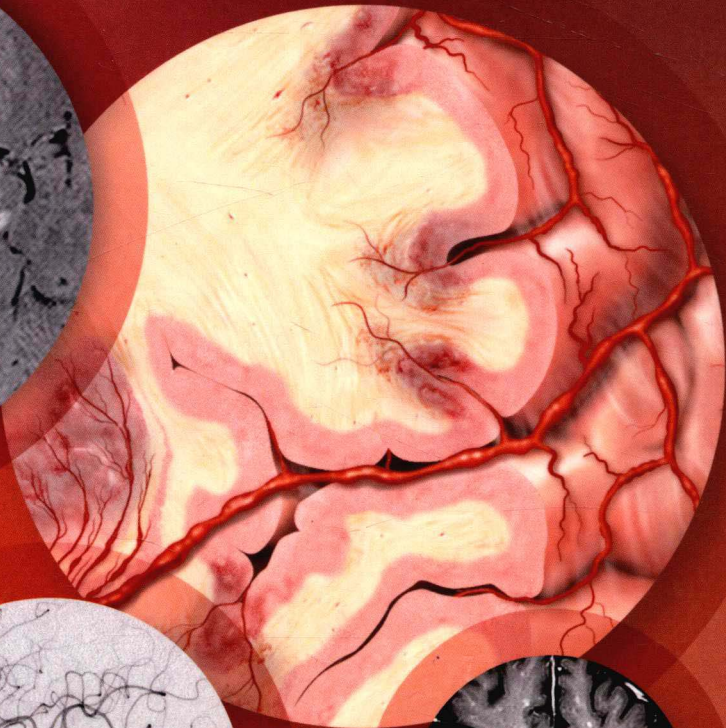


Get Full Access and More at

ExpertConsult.com

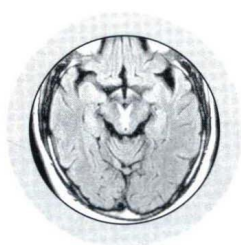
Imaging in Neurology

OSBORN | DIGRE



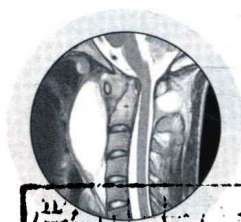
ELSEVIER

Imaging in Neurology



Anne G. Osborn, MD, FACR

University Distinguished Professor
William H. and Patricia W. Child Presidential Endowed Chair
University of Utah School of Medicine
Salt Lake City, Utah



Kathleen B. Digre, MD

Professor of Neurology, University of Utah School of Medicine
Chief, Division of Headache and Neuro-Ophthalmology
John A. Moran Eye Center
Salt Lake City, Utah



Copyright © 2016 by Elsevier. All rights reserved.

No part of this publication may be reproduced or transmitted in any form or by any means, electronic or mechanical, including photocopying, recording, or any information storage and retrieval system, without permission in writing from the publisher. Details on how to seek permission, further information about the Publisher's permissions policies and our arrangements with organizations such as the Copyright Clearance Center and the Copyright Licensing Agency, can be found at our website: www.elsevier.com/permissions.

This book and the individual contributions contained in it are protected under copyright by the Publisher (other than as may be noted herein).

Notices

Knowledge and best practice in this field are constantly changing. As new research and experience broaden our understanding, changes in research methods, professional practices, or medical treatment may become necessary.

Practitioners and researchers must always rely on their own experience and knowledge in evaluating and using any information, methods, compounds, or experiments described herein. In using such information or methods they should be mindful of their own safety and the safety of others, including parties for whom they have a professional responsibility.

With respect to any drug or pharmaceutical products identified, readers are advised to check the most current information provided (i) on procedures featured or (ii) by the manufacturer of each product to be administered, to verify the recommended dose or formula, the method and duration of administration, and contraindications. It is the responsibility of practitioners, relying on their own experience and knowledge of their patients, to make diagnoses, to determine dosages and the best treatment for each individual patient, and to take all appropriate safety precautions.

To the fullest extent of the law, neither the Publisher nor the authors, contributors, or editors, assume any liability for any injury and/or damage to persons or property as a matter of products liability, negligence or otherwise, or from any use or operation of any methods, products, instructions, or ideas contained in the material herein.

Publisher Cataloging-in-Publication Data

Names: Osborn, Anne G., 1943- | Digre, Kathleen B.

Title: Imaging in neurology / [edited by] Anne G. Osborn and Kathleen B. Digre.

Description: First edition. | Salt Lake City, UT : Elsevier, Inc., [2016] | Includes bibliographical references and index.

Identifiers: ISBN 978-0-323-44781-2

Subjects: LCSH: Neurology--Handbooks, manuals, etc. | Nervous system--Imaging---Handbooks, manuals, etc. | MESH: Neurology--Atlases. | Nervous System--Atlases. | Functional Neuroimaging--Atlases.

Classification: LCC RC349.D52 O83 2016 | NLM WL 141 | DDC 616.804754--dc23

International Standard Book Number: 978-0-323-44781-2

Cover Designer: Tom M. Olson, BA

Printed in Canada by Friesens, Altona, Manitoba, Canada

Last digit is the print number: 9 8 7 6 5 4 3 2 1



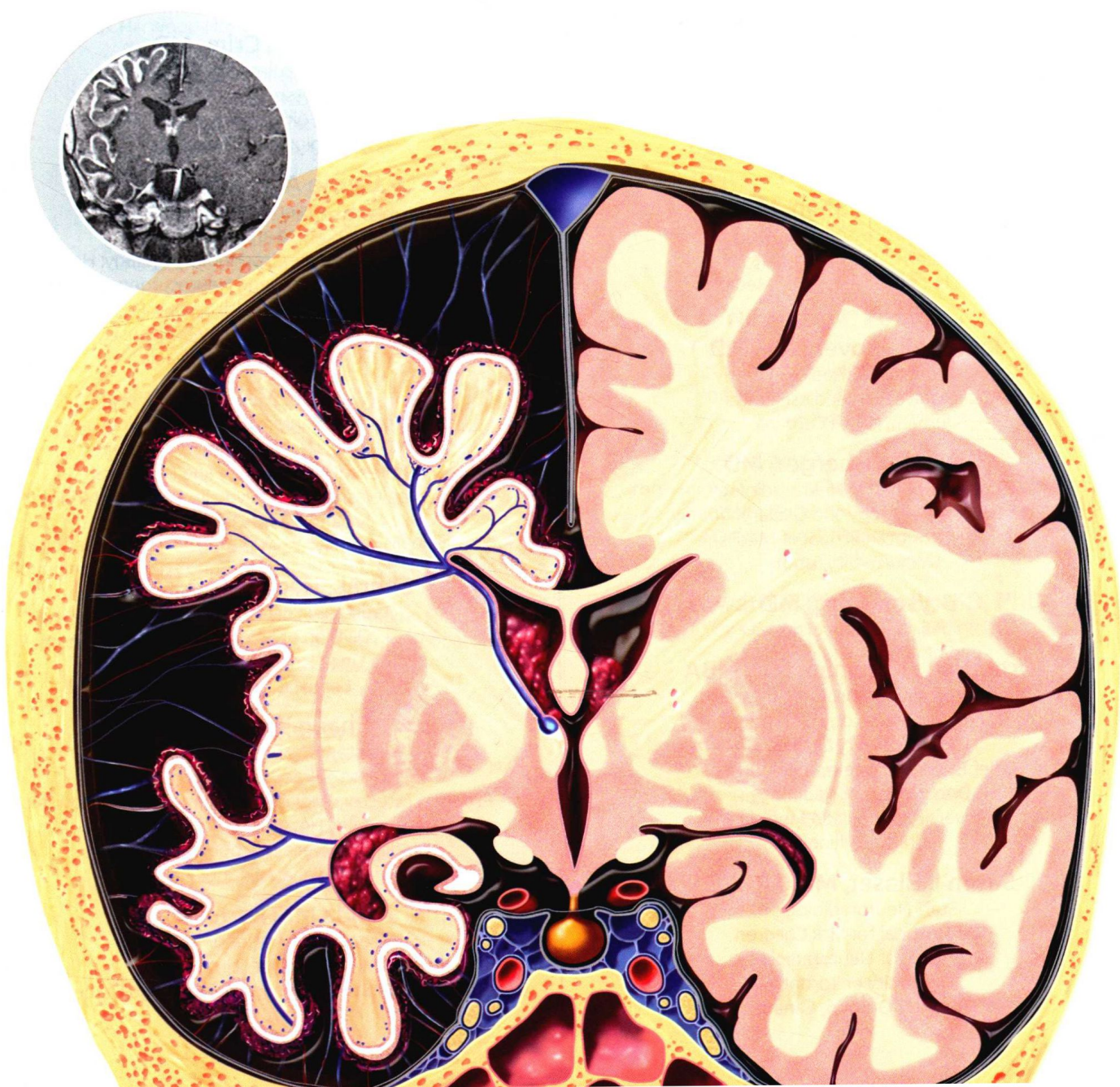
Working together
to grow libraries in
developing countries

www.elsevier.com • www.bookaid.org

Dedication

*To my husband, Michael Varner, for his
neverending love and encouragement.*

KBD



Contributing Authors

Miral D. Jhaveri, MD

Associate Professor
Director of Neuroradiology
Department of Diagnostic Radiology & Nuclear Medicine
Rush University Medical Center
Chicago, Illinois

Karen L. Salzman, MD

Professor of Radiology
Leslie W. Davis Endowed Chair in Neuroradiology
University of Utah School of Medicine
Salt Lake City, Utah

Jeffrey S. Ross, MD

Senior Associate Consultant
Neuroradiology Division
Department of Radiology
Mayo Clinic Arizona
Professor of Radiology
Mayo Clinic College of Medicine
Phoenix, Arizona

Kevin R. Moore, MD

Pediatric Neuroradiologist
Primary Children's Hospital
Salt Lake City, Utah

Lubdhra M. Shah, MD

Associate Professor of Radiology
Division of Neuroradiology
University of Utah School of Medicine
Salt Lake City, Utah

James M. Provenzale, MD

Professor of Radiology
Duke University Medical Center
Durham, North Carolina

H. Ric Harnsberger, MD

R.C. Willey Chair in Neuroradiology
Professor of Radiology and Otolaryngology
University of Utah School of Medicine
Salt Lake City, Utah

Bryson Borg, MD

Fairfield, California

Gregory L. Katzman, MD, MBA

Professor, Neuroradiology
Vice Chair, Radiology Operations
Chief Quality Officer
Chief Business Development Officer
Department of Radiology
University of Chicago Medicine
Chicago, Illinois

Susan I. Blaser, MD, FRCPC

Staff Neuroradiologist
The Hospital for Sick Children
Professor of Neuroradiology
University of Toronto
Toronto, Ontario, Canada

Bronwyn E. Hamilton, MD

Professor of Radiology
Oregon Health & Science University
Portland, Oregon

Perry P. Ng, MBBS (Hons), FRANZCR

Adjunct Associate Professor, Department of Radiology
University of Utah School of Medicine
Salt Lake City, Utah
Interventional Neuroradiologist
Centura Health Physician Group
Denver, Colorado

A. James Barkovich, MD

Professor of Radiology and Biomedical Imaging, Neurology,
Pediatrics and Neurological Surgery
UCSF-Benioff Children's Hospital
University of California, San Francisco
San Francisco, California

Julia R. Crim, MD

Chief of Musculoskeletal Radiology
Professor of Radiology
University of Missouri at Columbia
Columbia, Missouri

Laurie A. Loevner, MD

Chief, Division of Neuroradiology
Director, Head and Neck Radiology
Professor of Radiology, Otorhinolaryngology: Head and
Neck Surgery, and Neurosurgery
University of Pennsylvania Health System Perelman School
of Medicine at the University of Pennsylvania
Philadelphia, Pennsylvania

Gilbert Vézina, MD

Director, Program in Neuroradiology
Children's National Medical Center
Professor of Radiology and Pediatrics
The George Washington University School of Medicine
and Health Sciences
Washington, DC

Sheri L. Harder, MD, FRCPC

Assistant Professor of Radiology
Division of Neuroradiology
Loma Linda University Medical Center
Loma Linda, California

Chang Yueh Ho, MD

Assistant Professor of Radiology
Director of Pediatric Neuroradiology
Program Director, Pediatric Neuroradiology Fellowship
Riley Hospital for Children
Indiana University School of Medicine
Indianapolis, Indiana

Majda M. Thurnher, MD

Associate Professor of Radiology
Medical University of Vienna
Department of Biomedical Imaging and Image-Guided Therapy
Vienna, Austria

H. Christian Davidson, MD

Professor of Radiology
University of Utah School of Medicine
Salt Lake City, Utah

Yoshimi Anzai, MD, MPH

Professor of Radiology
Associate Chief Medical Quality Officer
University of Utah
Salt Lake City, Utah

Anna Illner, MD

Pediatric Neuroradiologist
Texas Children's Hospital
Assistant Professor of Radiology
Baylor College of Medicine
Houston, Texas

Ulrich Rassner, MD

Associate Professor of Radiology
Division of Neuroradiology
University of Utah School of Medicine
Salt Lake City, Utah

Charles Raybaud, MD, FRCPC

Derek Harwood-Nash Chair in Medical Imaging
Division Head of Neuroradiology
The Hospital for Sick Children
Professor of Radiology
University of Toronto
Toronto, Ontario, Canada

John H. Rees, MD

Chief of Neuroradiology: Partners Imaging
Sarasota, Florida
Assistant Professor of Radiology
Georgetown University
Previously: Visiting Scientist
Armed Forces Institute of Pathology
Washington, DC

Jeffrey S. Anderson, MD, PhD

Associate Professor of Radiology and Bioengineering
University of Utah School of Medicine
Salt Lake City, Utah

P. Ellen Grant, MD

Associate Professor in Radiology, Harvard Medical School
Founding Director, Center for Fetal-Neonatal Neuroimaging
and Developmental Science
Director of Fetal and Neonatal Neuroimaging Research
Boston Children's Hospital Endowed Chair in Neonatology
Boston Children's Hospital
Boston, Massachusetts

Gary L. Hedlund, DO

Adjunct Professor of Radiology
University of Utah School of Medicine
Pediatric Neuroradiologist
Department of Medical Imaging
Primary Children's Hospital
Salt Lake City, Utah

Blaise V. Jones, MD

Associate Director of Radiology
Neuroradiology Section Chief
Cincinnati Children's Hospital Medical Center
Professor of Clinical Radiology and Pediatrics
University of Cincinnati College of Medicine
Cincinnati, Ohio

Luke N. Ledbetter, MD

Assistant Professor of Radiology
Division of Neuroradiology
University of Kansas Medical Center
Kansas City, Kansas

Deborah R. Shatzkes, MD

Professor of Radiology
Hofstra North Shore-LIJ School of Medicine
Chief, Head & Neck Radiology
Lenox Hill Hospital and
The New York Head & Neck Institute
North Shore-LIJ Health System
New York, New York

Rebecca S. Cornelius, MD, FACR

Professor of Radiology and Otolaryngology-
Head and Neck Surgery
University of Cincinnati College of Medicine
University of Cincinnati Medical Center
Cincinnati, Ohio

Patricia A. Hudgins, MD, FACR

Professor of Radiology/Otolaryngology
Director of Head & Neck Radiology
Department of Radiology and Imaging Sciences
Emory University School of Medicine
Atlanta, Georgia

Nicholas A. Koontz, MD

Assistant Professor of Clinical Radiology
Department of Radiology and Imaging Sciences
Indiana University School of Medicine
Indianapolis, Indiana

Gary M. Nesbit, MD

Professor of Radiology, Neurology, Neurological Surgery
and the Dotter Interventional Institute
Oregon Health & Science University
Portland, Oregon

Edward P. Quigley, III, MD, PhD

Assistant Professor of Radiology
Division of Neuroradiology
University of Utah School of Medicine
Salt Lake City, Utah

Palmi Shah, MD

Assistant Professor
Rush University Medical Center
Chicago, Illinois



Preface

Anne Osborn and I have been colleagues for almost our entire careers. When she approached me about joining her to edit a book for neurologists on imaging, I didn't have to think twice. Neurologists use imaging every day as an extension of the neurological examination. In fact, imaging is critical to making the correct diagnosis and following patients. Yet, the best imaging books are all in neuroradiology. Here was a chance to partner with one of the premier neuroradiologists to produce a book that would be practical and useful to my neurological colleagues around the world. What wasn't to like?!

The book's purpose is to provide key imaging findings to the most common and important neurological disorders in an easy-to-understand format, using typical imaging examples, pathological examples when appropriate, and gorgeous drawings that illustrate key findings. We have also included clinical photos where indicated.

The book is divided into three parts—an introduction to imaging in general, imaging of the brain from pathology-based and anatomic-based diagnoses, and spine imaging. There are overview chapters to difficult subjects like congenital malformations, trauma, vascular anatomy, neoplasms, infectious diseases, and metabolic disorders. There are anatomic overviews of the ventricles, the pituitary, cerebellar pontine angle, and the orbit. The spine section also has a wonderful review of normal anatomy and then develops a complex subject made simple.

Each chapter is written by outstanding neuroradiologists who point out the main imaging findings for each disorder or anatomic area. We then addressed key clinical features. The organization of each chapter makes it really easy for a neurologist to quickly know the key terminology, imaging findings, pathologic underpinnings, and important clinical details. Images were specifically chosen to be classic examples, and Anne Osborn labored for many hours putting arrows on every structure that is described so that all of us neurologists know exactly what the key findings are.

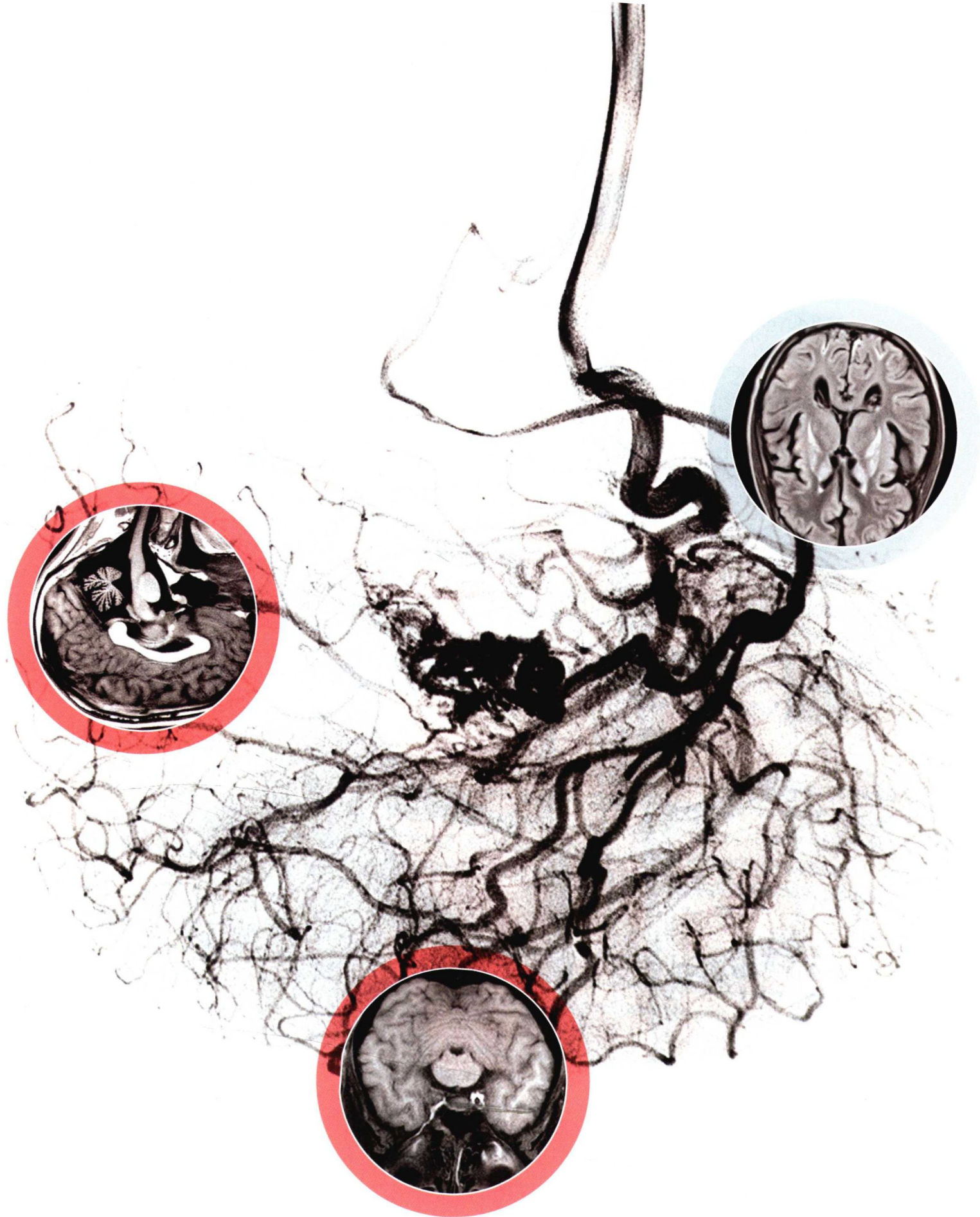
We see this book being of value to every practicing neurologist or physician who sees general neurology patients. In addition, we see residents using this book to study for in-service and board exams.

We have many people to thank in producing this book. First, we relied on two fellows from the University of Utah who completed neurological residencies and are currently in fellowship—Dr. Kelsey Juster-Switlyk and Dr. Reuben Valenzuela. These two highlighted areas that were not clear or key points that were missing. Our fabulous senior editor, Dr. Karen E. Concannon, kept us on schedule.

Finally, we thank our families and colleagues for giving us the time and space to finish the project.

Kathleen B. Digre, MD

Professor of Neurology, University of Utah School of Medicine
Chief, Division of Headache and Neuro-Ophthalmology
John A. Moran Eye Center
Salt Lake City, Utah



Acknowledgments

Text Editors

Arthur G. Gelsinger, MA
Nina I. Bennett, BA
Tricia L. Cannon, BA
Terry W. Ferrell, MS
Lisa A. Gervais, BS
Emily C. Fassett, BA

Image Editors

Jeffrey J. Marmorstone, BS
Lisa A. M. Steadman, BS

Medical Editors

Kelsey Juster-Switlyk, MD
Reuben Mari Valenzuela, MD

Illustrations

Laura C. Sesto, MA
Lane R. Bennion, MS
Richard Coombs, MS

Art Direction and Design

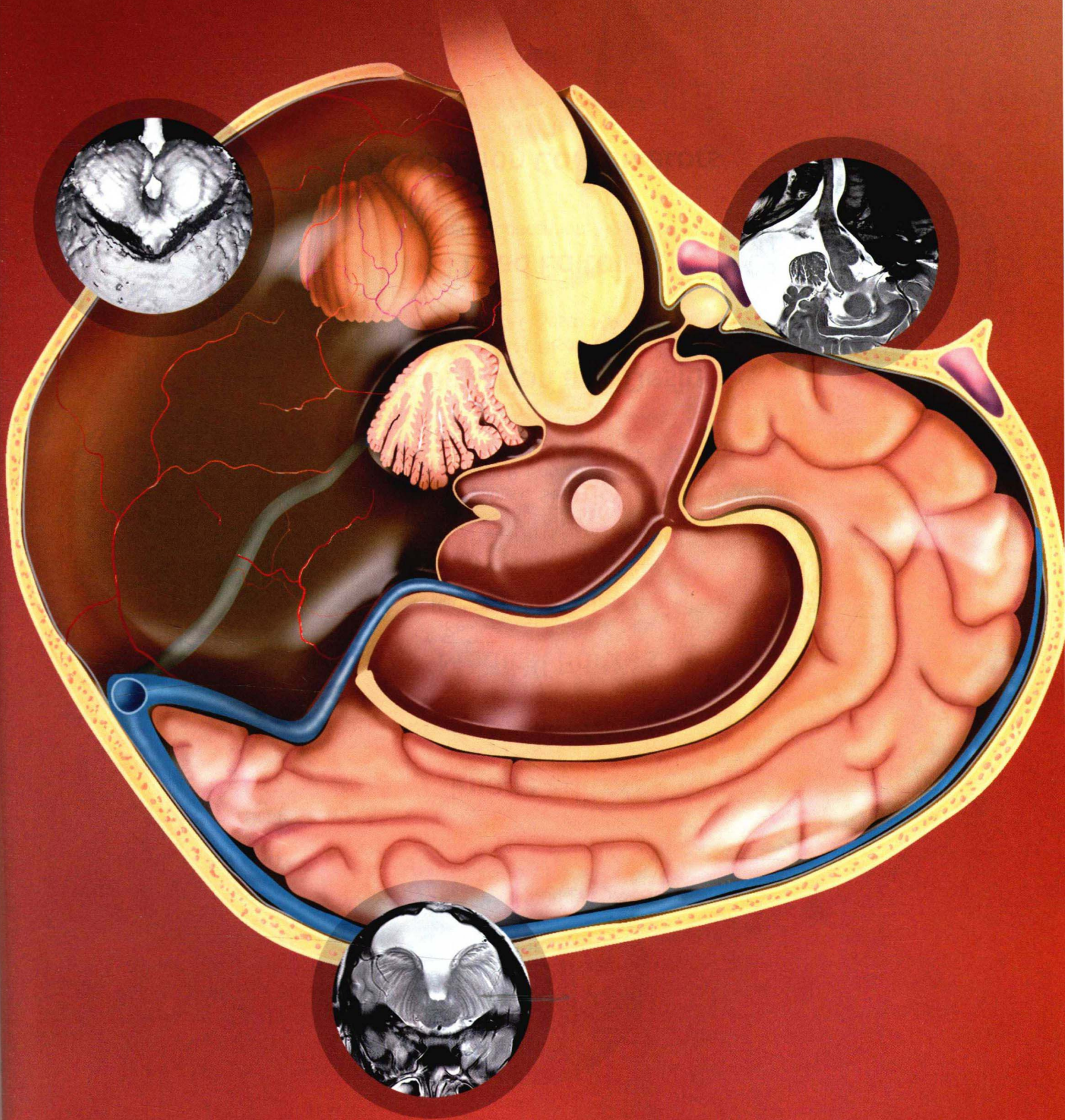
Tom M. Olson, BA
Laura C. Sesto, MA

Lead Editor

Karen E. Concannon, MA, PhD

Production Coordinators

Angela M. Terry, BA
Rebecca L. Hutchinson, BA



Sections



Part I: Brain

Section 1:

Pathology-Based Diagnoses:
Malformations, Trauma, and Stroke

Section 2:

Pathology-Based Diagnoses:
Neoplasms, Cysts, and Disorders

Section 3:

Anatomy-Based Diagnoses



Part II: Spine

Section 1:

Normal Anatomy and Congenital Disorders

Section 2:

Trauma and Hemorrhage

Section 3:

Degenerative Diseases and Arthritides

Section 4:

Infection and Inflammatory Disorders

Section 5:

Neoplasms, Cysts, and Other Masses

Section 6:

Peripheral Nerve and Plexi

TABLE OF CONTENTS

- 2 **Introduction to Imaging**
Miral D. Jhaveri, MD and Palmi Shah, MD

Part I: Brain

SECTION 1: PATHOLOGY-BASED DIAGNOSES: MALFORMATIONS, TRAUMA, AND STROKE

CONGENITAL MALFORMATIONS

- 10 **Congenital Malformations Overview**
A. James Barkovich, MD

BRAIN MALFORMATIONS

- 14 **Chiari 1**
Susan I. Blaser, MD, FRCPC and Anne G. Osborn, MD, FACR
- 15 **Chiari 2**
Susan I. Blaser, MD, FRCPC and Kevin R. Moore, MD
- 16 **Callosal Dysgenesis**
Charles Raybaud, MD, FRCPC and Anne G. Osborn, MD, FACR
- 17 **Lipoma**
A. James Barkovich, MD
- 18 **Dandy-Walker Continuum**
Susan I. Blaser, MD, FRCPC
- 19 **Septo-optic Dysplasia**
A. James Barkovich, MD
- 20 **Heterotopic Gray Matter**
Charles Raybaud, MD, FRCPC
- 21 **Polymicrogyria**
A. James Barkovich, MD
- 22 **Schizencephaly**
Blaise V. Jones, MD

NEUROCRANEOUS SYNDROMES

- 23 **von Hippel-Lindau Syndrome**
Anne G. Osborn, MD, FACR and Gilbert Vézina, MD
- 24 **Neurofibromatosis Type 1**
Gilbert Vézina, MD and Anne G. Osborn, MD, FACR
- 25 **Neurofibromatosis Type 2**
Gilbert Vézina, MD
- 26 **Tuberous Sclerosis Complex**
Gilbert Vézina, MD and Anne G. Osborn, MD, FACR
- 27 **Sturge-Weber Syndrome**
Gilbert Vézina, MD and Anne G. Osborn, MD, FACR
- 28 **Hereditary Hemorrhagic Telangiectasia**
Anne G. Osborn, MD, FACR and Charles Raybaud, MD, FRCPC

- 29 **Lhermitte-Duclos Disease**
Anne G. Osborn, MD, FACR and P. Ellen Grant, MD
- 30 **Li-Fraumeni Syndrome**
Gilbert Vézina, MD

TRAUMA

- 31 **Introduction to CNS Imaging, Trauma**
Anne G. Osborn, MD, FACR

PRIMARY EFFECTS OF CNS TRAUMA

- 37 **Acute Subdural Hematoma**
Anne G. Osborn, MD, FACR and Bronwyn E. Hamilton, MD
- 38 **Subacute Subdural Hematoma**
Anne G. Osborn, MD, FACR and Bronwyn E. Hamilton, MD
- 39 **Chronic Subdural Hematoma**
Anne G. Osborn, MD, FACR
- 40 **Epidural Hematoma, Classic**
Anne G. Osborn, MD, FACR and Gregory L. Katzman, MD, MBA
- 41 **Epidural Hematoma, Variant**
Anne G. Osborn, MD, FACR
- 42 **Abusive Head Trauma**
Gary L. Hedlund, DO and Anne G. Osborn, MD, FACR
- 43 **Traumatic Subarachnoid Hemorrhage**
Anne G. Osborn, MD, FACR and Gregory L. Katzman, MD, MBA
- 44 **Cerebral Contusion**
Anne G. Osborn, MD, FACR
- 45 **Diffuse Axonal Injury**
Anne G. Osborn, MD, FACR
- 46 **Subcortical Injury**
Anne G. Osborn, MD, FACR and Gregory L. Katzman, MD, MBA

SECONDARY EFFECTS OF CNS TRAUMA

- 47 **Intracranial Herniation Syndromes**
Anne G. Osborn, MD, FACR
- 48 **Traumatic Cerebral Ischemia/Infarction**
Anne G. Osborn, MD, FACR and Gregory L. Katzman, MD, MBA
- 49 **Brain Death**
Anne G. Osborn, MD, FACR
- 50 **Second Impact Syndrome**
Anne G. Osborn, MD, FACR
- 51 **Traumatic Intracranial Arterial Dissection**
Anne G. Osborn, MD, FACR
- 52 **Traumatic Carotid Cavernous Fistula**
Anne G. Osborn, MD, FACR and Perry P. Ng, MBBS (Hons), FRANZCR

TABLE OF CONTENTS

- 53 **Chronic Traumatic Encephalopathy**
Anne G. Osborn, MD, FACR

VASCULAR ANATOMY AND STROKE

VASCULAR ANATOMY

- 54 **Intracranial Arteries Overview**
Anne G. Osborn, MD, FACR
- 60 **Intracranial Venous System Overview**
Anne G. Osborn, MD, FACR
- 68 **Stroke Overview**
Karen L. Salzman, MD
- NONTRAUMATIC INTRACRANIAL HEMORRHAGE**
- 74 **Evolution of Intracranial Hemorrhage**
Karen L. Salzman, MD and Ulrich Rassner, MD
- 75 **Spontaneous Nontraumatic Intracranial Hemorrhage**
Karen L. Salzman, MD and Laurie A. Loevner, MD
- 76 **Hypertensive Intracranial Hemorrhage**
Karen L. Salzman, MD and Laurie A. Loevner, MD

ATHEROSCLEROSIS AND CAROTID STENOSIS

- 77 **Arteriolosclerosis**
Karen L. Salzman, MD
- 78 **Intracranial Atherosclerosis**
Anne G. Osborn, MD, FACR
- 79 **Extracranial Atherosclerosis**
Karen L. Salzman, MD and Bronwyn E. Hamilton, MD

NONATHEROMATOUS VASCULOPATHY

- 80 **Moyamoya**
Anne G. Osborn, MD, FACR and Anna Illner, MD
- 81 **Primary Arteritis of the CNS**
Anne G. Osborn, MD, FACR
- 82 **Miscellaneous Vasculitis**
Anne G. Osborn, MD, FACR
- 83 **Reversible Cerebral Vasoconstriction Syndrome**
Karen L. Salzman, MD and Perry P. Ng, MBBS (Hons), FRANZCR
- 84 **Vasospasm**
Karen L. Salzman, MD and Perry P. Ng, MBBS (Hons), FRANZCR
- 85 **Systemic Lupus Erythematosus**
Karen L. Salzman, MD and Gary M. Nesbit, MD
- 86 **Cerebral Amyloid Angiopathy (CAA)**
Karen L. Salzman, MD and Bronwyn E. Hamilton, MD
- 87 **CADASIL**
Karen L. Salzman, MD and Ulrich Rassner, MD
- 88 **Behçet Disease**
Karen L. Salzman, MD
- 89 **Susac Syndrome**
Karen L. Salzman, MD and Jeffrey S. Anderson, MD, PhD
- 90 **Fibromuscular Dysplasia**
Karen L. Salzman, MD and Perry P. Ng, MBBS (Hons), FRANZCR
- 91 **Extracranial Internal Carotid Artery Dissection**
Rebecca S. Cornelius, MD, FACR

- 92 **Extracranial Vertebral Artery Dissection**
Lubdha M. Shah, MD

CEREBRAL ISCHEMIA AND INFARCTION

- 93 **Adult Hypoxic Ischemic Injury**
Karen L. Salzman, MD and Lubdha M. Shah, MD
- 94 **Hypotensive Cerebral Infarction**
Anne G. Osborn, MD, FACR and Bronwyn E. Hamilton, MD
- 95 **Childhood Stroke**
Anne G. Osborn, MD, FACR and Blaise V. Jones, MD
- 96 **Acute Cerebral Ischemia-Infarction**
Anne G. Osborn, MD, FACR and Edward P. Quigley, III, MD, PhD
- 97 **Subacute Cerebral Infarction**
Karen L. Salzman, MD and Sheri L. Harder, MD, FRCPC
- 98 **Chronic Cerebral Infarction**
Sheri L. Harder, MD, FRCPC and Anne G. Osborn, MD, FACR
- 99 **Multiple Embolic Cerebral Infarctions**
Karen L. Salzman, MD
- 100 **Fat Emboli Cerebral Infarction**
Karen L. Salzman, MD
- 101 **Lacunar Infarction**
Karen L. Salzman, MD and Ulrich Rassner, MD
- 102 **Cerebral Hyperperfusion Syndrome (CHS)**
Anne G. Osborn, MD, FACR
- 103 **Dural Sinus Thrombosis**
Anne G. Osborn, MD, FACR
- 104 **Cavernous Sinus Thrombosis/Thrombophlebitis**
Anne G. Osborn, MD, FACR
- 105 **Cortical Venous Thrombosis**
Anne G. Osborn, MD, FACR and Bronwyn E. Hamilton, MD
- 106 **Deep Cerebral Venous Thrombosis**
Anne G. Osborn, MD, FACR and Bronwyn E. Hamilton, MD

SUBARACHNOID HEMORRHAGE AND ANEURYSMS

- 107 **Subarachnoid Hemorrhage and Aneurysms Overview**
Anne G. Osborn, MD, FACR
- 109 **Aneurysmal Subarachnoid Hemorrhage**
Anne G. Osborn, MD, FACR
- 110 **Perimesencephalic Nonaneurysmal Subarachnoid Hemorrhage (pnSAH)**
Anne G. Osborn, MD, FACR
- 111 **Convexal Subarachnoid Hemorrhage (cSAH)**
Anne G. Osborn, MD, FACR
- 112 **Saccular Aneurysm**
Anne G. Osborn, MD, FACR and Perry P. Ng, MBBS (Hons), FRANZCR
- 113 **Vertebrobasilar Dolichoectasia**
Anne G. Osborn, MD, FACR
- 114 **Atherosclerotic Vascular Disease (ASVD) Fusiform Aneurysm**
Anne G. Osborn, MD, FACR

VASCULAR MALFORMATIONS

- 115 **Vascular Malformations Overview**
Anne G. Osborn, MD, FACR

TABLE OF CONTENTS

- 117 **Arteriovenous Malformation**
Anne G. Osborn, MD, FACR and Perry P. Ng, MBBS (Hons), FRANZCR
- 118 **Dural Arteriovenous Fistula**
Anne G. Osborn, MD, FACR and Perry P. Ng, MBBS (Hons), FRANZCR
- 119 **Developmental Venous Anomaly**
Anne G. Osborn, MD, FACR
- 120 **Cavernous Malformation**
Anne G. Osborn, MD, FACR
- 121 **Capillary Telangiectasia**
Anne G. Osborn, MD, FACR

SECTION 2: PATHOLOGY-BASED DIAGNOSES: NEOPLASMS, CYSTS, AND DISORDERS

NEOPLASMS

- 124 **Neoplasms Overview**
Anne G. Osborn, MD, FACR
- ASTROCYTOMAS**
- 128 **Low-Grade Diffuse Astrocytoma**
Karen L. Salzman, MD
- 129 **Anaplastic Astrocytoma**
Karen L. Salzman, MD
- 130 **Pilocytic Astrocytoma**
Karen L. Salzman, MD and Chang Yueh Ho, MD
- 131 **Glioblastoma**
Karen L. Salzman, MD
- 132 **Gliomatosis Cerebri**
Karen L. Salzman, MD

NONASTROCYTIC GLIOMAS

- 133 **Oligodendroglioma**
Karen L. Salzman, MD
- 134 **Anaplastic Oligodendroglioma**
Karen L. Salzman, MD
- 135 **Infratentorial Ependymoma**
Anne G. Osborn, MD, FACR and Majda M. Thurnher, MD
- 136 **Subependymoma**
Karen L. Salzman, MD
- 137 **Typical Choroid Plexus Papilloma**
Anne G. Osborn, MD, FACR and Chang Yueh Ho, MD

NEURONAL AND MIXED NEURONAL-GLIAL TUMORS

- 138 **Ganglioglioma**
Karen L. Salzman, MD
- 139 **Dysembryoplastic Neuroepithelial Tumor (DNET)**
Karen L. Salzman, MD and Laurie A. Loevner, MD
- 140 **Central Neurocytoma**
Karen L. Salzman, MD

PINEAL AND GERM CELL TUMORS

- 141 **Pineocytoma**
Karen L. Salzman, MD and Laurie A. Loevner, MD

- 142 **Pineal Parenchymal Tumor of Intermediate Differentiation (PPTID)**
Karen L. Salzman, MD and Anne G. Osborn, MD, FACR
- 143 **Germinoma**
Anne G. Osborn, MD, FACR and Majda M. Thurnher, MD

MISCELLANEOUS PRIMARY TUMORS

- 144 **Medulloblastoma**
Anne G. Osborn, MD, FACR and Majda M. Thurnher, MD
- 145 **Hemangioblastoma**
Karen L. Salzman, MD and John H. Rees, MD
- 146 **Primary CNS Lymphoma**
Karen L. Salzman, MD
- 147 **Intravascular (Angiocentric) Lymphoma**
Karen L. Salzman, MD
- 148 **Leukemia**
Karen L. Salzman, MD and Miral D. Jhaveri, MD

METASTATIC TUMORS AND REMOTE EFFECTS OF CANCER

- 149 **Parenchymal Metastases**
Anne G. Osborn, MD, FACR
- 150 **Miscellaneous Intracranial Metastases**
Anne G. Osborn, MD, FACR
- 151 **Metastatic Intracranial Lymphoma**
Karen L. Salzman, MD
- 152 **Paraneoplastic Syndromes and Limbic Encephalitis**
Karen L. Salzman, MD

TREATMENT-RELATED EFFECTS

- 153 **Radiation and Chemotherapy**
Miral D. Jhaveri, MD and Karen L. Salzman, MD
- 154 **Pseudoprogression (PsP)**
Karen L. Salzman, MD
- 155 **Pseudoresponse**
Karen L. Salzman, MD

PRIMARY NONNEOPLASTIC CYSTS

- 156 **Primary Nonneoplastic Cysts Overview**
Anne G. Osborn, MD, FACR
- 160 **Arachnoid Cyst**
Anne G. Osborn, MD, FACR
- 161 **Colloid Cyst**
Anne G. Osborn, MD, FACR
- 162 **Dermoid Cyst**
Chang Yueh Ho, MD
- 163 **Epidermoid Cyst**
Anne G. Osborn, MD, FACR and Gregory L. Katzman, MD, MBA
- 164 **Hippocampal Sulcus Remnant Cysts**
Chang Yueh Ho, MD
- 165 **Enlarged Perivascular Spaces**
Anne G. Osborn, MD, FACR
- 166 **Pineal Cyst**
Anne G. Osborn, MD, FACR
- 167 **Choroid Plexus Cyst**
Anne G. Osborn, MD, FACR

TABLE OF CONTENTS

- 168 **Porencephalic Cyst**
Anne G. Osborn, MD, FACR and Gregory L. Katzman, MD, MBA

INFECTIOUS, INFLAMMATORY, AND DEMYELINATING DISEASE

INFECTIONS

- 169 **CNS Infectious Disease Overview**
Miral D. Jhaveri, MD and Anne G. Osborn, MD, FACR
- 171 **Meningitis**
Miral D. Jhaveri, MD and Karen L. Salzman, MD
- 172 **Abscess**
Miral D. Jhaveri, MD and Karen L. Salzman, MD
- 173 **Ventriculitis**
Miral D. Jhaveri, MD and Karen L. Salzman, MD
- 174 **Empyema**
Miral D. Jhaveri, MD and Karen L. Salzman, MD
- 175 **Herpes Encephalitis**
Miral D. Jhaveri, MD and Karen L. Salzman, MD
- 176 **HHV-6 Encephalitis**
Miral D. Jhaveri, MD
- 177 **West Nile Virus Encephalitis**
Miral D. Jhaveri, MD and Laurie A. Loevner, MD
- 178 **Miscellaneous Encephalitis**
Miral D. Jhaveri, MD and Karen L. Salzman, MD
- 179 **Cerebellitis**
Miral D. Jhaveri, MD
- 180 **Tuberculosis**
Miral D. Jhaveri, MD and Sheri L. Harder, MD, FRCPC
- 181 **Neurocysticercosis**
Miral D. Jhaveri, MD and Karen L. Salzman, MD
- 182 **Lyme Disease**
Miral D. Jhaveri, MD and Laurie A. Loevner, MD
- 183 **Acquired HIV Encephalitis**
Miral D. Jhaveri, MD and James M. Provenzale, MD
- 184 **Acquired Toxoplasmosis**
Miral D. Jhaveri, MD and James M. Provenzale, MD
- 185 **Acquired CMV**
Miral D. Jhaveri, MD and Yoshimi Anzai, MD, MPH
- 186 **Fungal Infections**
Anne G. Osborn, MD, FACR
- 187 **Cryptococcosis**
Yoshimi Anzai, MD, MPH
- 188 **Progressive Multifocal Leukoencephalopathy (PML)**
Miral D. Jhaveri, MD and Yoshimi Anzai, MD, MPH
- 189 **Immune Reconstitution Inflammatory Syndrome (IRIS)**
Miral D. Jhaveri, MD
- 190 **HIV/AIDS, Miscellaneous Manifestations**
Miral D. Jhaveri, MD

DEMYELINATING DISORDERS

- 191 **Multiple Sclerosis**
Miral D. Jhaveri, MD
- 192 **Neuromyelitis Optica**
Miral D. Jhaveri, MD
- 193 **Acute Disseminated Encephalomyelitis (ADEM)**
Miral D. Jhaveri, MD and Jeffrey S. Anderson, MD, PhD

- 194 **CLIPPERS**
Anne G. Osborn, MD, FACR

INHERITED METABOLIC/DEGENERATIVE DISORDERS

- 195 **Inherited Metabolic Disorders Overview**
A. James Barkovich, MD
- 199 **Leigh Syndrome**
A. James Barkovich, MD
- 200 **MELAS**
Susan I. Blaser, MD, FRCPC
- 201 **Kearns-Sayre Syndrome**
Susan I. Blaser, MD, FRCPC
- 202 **Mucopolysaccharidoses**
Susan I. Blaser, MD, FRCPC
- 203 **Metachromatic Leukodystrophy (MLD)**
Anna Illner, MD and Anne G. Osborn, MD, FACR
- 204 **Fabry Disease**
Miral D. Jhaveri, MD and Anne G. Osborn, MD, FACR
- 205 **X-Linked Adrenoleukodystrophy**
Susan I. Blaser, MD, FRCPC and Anne G. Osborn, MD, FACR
- 206 **Canavan Disease**
P. Ellen Grant, MD
- 207 **Alexander Disease**
Anna Illner, MD
- 208 **Neurodegeneration With Brain Iron Accumulation (NBIA)**
Chang Yueh Ho, MD and Anne G. Osborn, MD, FACR
- 209 **Pantothenate Kinase-Associated Neurodegeneration (PKAN)**
Anna Illner, MD
- 210 **Huntington Disease**
James M. Provenzale, MD
- 211 **Wilson Disease**
Anne G. Osborn, MD, FACR and James M. Provenzale, MD

ACQUIRED TOXIC/METABOLIC/DEGENERATIVE DISORDERS

- 212 **Acquired Toxic/Metabolic Disorders Overview**
Miral D. Jhaveri, MD and Karen L. Salzman, MD
- TOXIC, METABOLIC, NUTRITIONAL,
SYSTEMIC DISEASES WITH CNS
MANIFESTATIONS**
- 216 **Adult Hypoglycemia**
Miral D. Jhaveri, MD and John H. Rees, MD
- 217 **Thyroid Disorders**
Miral D. Jhaveri, MD
- 218 **Parathyroid Disorders**
Miral D. Jhaveri, MD
- 219 **Fahr Disease**
Miral D. Jhaveri, MD and Gregory L. Katzman, MD, MBA
- 220 **Alcoholic Encephalopathy**
Miral D. Jhaveri, MD
- 221 **Hepatic Encephalopathy**
Miral D. Jhaveri, MD

TABLE OF CONTENTS

- 222 **Acute Hypertensive Encephalopathy, Posterior Reversible Encephalopathy Syndrome (PRES)**
Miral D. Jhaveri, MD and Anne G. Osborn, MD, FACP
- 223 **Chronic Hypertensive Encephalopathy**
Miral D. Jhaveri, MD and James M. Provenzale, MD
- 224 **Idiopathic Intracranial Hypertension**
Miral D. Jhaveri, MD
- 225 **Carbon Monoxide Poisoning**
Yoshimi Anzai, MD, MPH
- 226 **Drug Abuse**
Miral D. Jhaveri, MD
- 227 **Osmotic Demyelination Syndrome**
Miral D. Jhaveri, MD and Sheri L. Harder, MD, FRCPC
- 228 **Mesial Temporal Sclerosis**
Miral D. Jhaveri, MD and Kevin R. Moore, MD
- 229 **Status Epilepticus**
Miral D. Jhaveri, MD and Karen L. Salzman, MD
- 230 **Transient Global Amnesia (TGA)**
Anne G. Osborn, MD, FACP

DEMENTIAS AND DEGENERATIVE DISORDERS

- 231 **Normal Aging Brain**
Miral D. Jhaveri, MD and Sheri L. Harder, MD, FRCPC
- 232 **Alzheimer Disease**
Miral D. Jhaveri, MD and James M. Provenzale, MD
- 233 **Vascular Dementia**
Miral D. Jhaveri, MD and James M. Provenzale, MD
- 234 **Frontotemporal Lobar Degeneration**
Miral D. Jhaveri, MD and James M. Provenzale, MD
- 235 **Dementia With Lewy Bodies**
Miral D. Jhaveri, MD and James M. Provenzale, MD
- 236 **Creutzfeldt-Jakob Disease (CJD), Classic**
Miral D. Jhaveri, MD and Karen L. Salzman, MD
- 237 **Creutzfeldt-Jakob Disease (CJD), Variants**
Anne G. Osborn, MD, FACP
- 238 **Parkinson Disease**
Miral D. Jhaveri, MD and James M. Provenzale, MD
- 239 **Multiple System Atrophy**
Miral D. Jhaveri, MD
- 240 **Posterior Cortical Atrophy**
Anne G. Osborn, MD, FACP
- 241 **Corticobasal Degeneration**
Miral D. Jhaveri, MD and James M. Provenzale, MD
- 242 **Progressive Supranuclear Palsy (PSP)**
Miral D. Jhaveri, MD and James M. Provenzale, MD
- 243 **Amyotrophic Lateral Sclerosis (ALS)**
Miral D. Jhaveri, MD and Lubdha M. Shah, MD
- 244 **Wallerian Degeneration**
Miral D. Jhaveri, MD and Lubdha M. Shah, MD
- 245 **Spinocerebellar Ataxias**
Anne G. Osborn, MD, FACP
- 246 **Crossed Cerebellar Diaschisis**
Miral D. Jhaveri, MD and Anne G. Osborn, MD, FACP
- 247 **Hypertrophic Olivary Degeneration**
Miral D. Jhaveri, MD and Anne G. Osborn, MD, FACP

SECTION 3: ANATOMY-BASED DIAGNOSES

VENTRICLES AND CISTERNS

- 250 **Ventricles and Cisterns Overview**
Miral D. Jhaveri, MD
- 256 **Cavum Septi Pellucidi (CSP)**
Miral D. Jhaveri, MD and Anne G. Osborn, MD, FACP
- 257 **Intraventricular Obstructive Hydrocephalus**
Miral D. Jhaveri, MD
- 258 **Extraventricular Obstructive Hydrocephalus**
Miral D. Jhaveri, MD
- 259 **Aqueductal Stenosis**
Miral D. Jhaveri, MD and Kevin R. Moore, MD
- 260 **Normal Pressure Hydrocephalus**
Miral D. Jhaveri, MD
- 261 **CSF Shunts and Complications**
Miral D. Jhaveri, MD and Kevin R. Moore, MD

SELLA AND PITUITARY

- 262 **Sella and Pituitary Overview**
Karen L. Salzman, MD and Anne G. Osborn, MD, FACP
- 266 **Pituitary Anomalies**
Karen L. Salzman, MD and Kevin R. Moore, MD
- 267 **Pituitary Microadenoma**
Karen L. Salzman, MD and Anne G. Osborn, MD, FACP
- 268 **Pituitary Macroadenoma**
Karen L. Salzman, MD and Anne G. Osborn, MD, FACP
- 269 **Pituitary Apoplexy**
Karen L. Salzman, MD and Anne G. Osborn, MD, FACP
- 270 **Rathke Cleft Cyst**
Karen L. Salzman, MD and Anne G. Osborn, MD, FACP
- 271 **Craniopharyngioma**
Karen L. Salzman, MD and John H. Rees, MD
- 272 **Empty Sella**
Luke N. Ledbetter, MD and Anne G. Osborn, MD, FACP
- 273 **Pituitary Hyperplasia**
Luke N. Ledbetter, MD and Anne G. Osborn, MD, FACP
- 274 **Lymphocytic Hypophysitis**
Karen L. Salzman, MD

CEREBELLOPONTINE ANGLE AND INTERNAL AUDITORY CANAL (CPA-IAC)

- 275 **CPA-IAC Overview**
H. Ric Harnsberger, MD
- 279 **Epidermoid Cyst, CPA-IAC**
H. Ric Harnsberger, MD
- 280 **Arachnoid Cyst, CPA-IAC**
H. Ric Harnsberger, MD
- 281 **Bell's Palsy**
H. Ric Harnsberger, MD
- 282 **Trigeminal Neuralgia**
H. Ric Harnsberger, MD
- 283 **Hemifacial Spasm**
H. Ric Harnsberger, MD
- 284 **Vestibular Schwannoma**
H. Ric Harnsberger, MD