

**DOVER**

**VECTOR PATTERN LIBRARY**

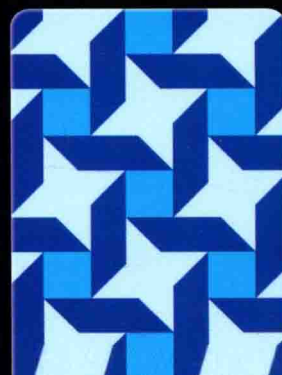


**200**  
Royalty-free  
designs



**VOLUME**

**1**



VECTOR  
PATTERN  
LIBRARY

常州大学图书馆  
藏书章



**GREEN  
EDITION**

*At Dover Publications we're committed to producing books in an earth-friendly manner and to helping our customers make greener choices.*

Manufacturing books in the United States ensures compliance with strict environmental laws and eliminates the need for international freight shipping, a major contributor to global air pollution. And printing on recycled paper helps minimize our consumption of trees, water and fossil fuels.

The text of this book was printed on paper made with 10% post-consumer waste and the cover was printed on paper made with 10% post-consumer waste. At Dover, we use Environmental Defense's Paper Calculator to measure the benefits of these choices, including: the number of trees saved, gallons of water conserved, as well as air emissions and solid waste eliminated.

Please visit the product page for *Vector Pattern Library* at [www.doverpublications.com](http://www.doverpublications.com) to see a detailed account of the environmental savings we've achieved over the life of this book.

By Alan Weller.

Copyright © 2011 by Dover Publications, Inc.  
Digital images copyright © 2011 by Dover Publications, Inc.  
All rights reserved.

*Vector Pattern Library* is a new work, first published by Dover Publications, Inc., in 2011.

The illustrations contained in this book and CD-ROM belong to the Dover Design Series. They are royalty-free, and may be used as a graphic resource provided no more than ten images are included in the same publication or project. The use of any of these images in book, electronic, or any other format for resale or distribution as royalty-free graphics is strictly prohibited.

For permission to use more than ten images, please contact:  
Permissions Department  
Dover Publications, Inc.  
31 East 2nd Street  
Mineola, NY 11501  
[rights@doverpublications.com](mailto:rights@doverpublications.com)

The CD-ROM file names correspond to the images in the book. All of the artwork stored on the CD-ROM can be imported directly into a wide range of design and editing programs on either Windows or Macintosh platforms. No further installation is necessary.

ISBN-13: 978-0-486-99107-8  
ISBN-10: 0-486-99107-5

Manufactured in the United States by Courier Corporation  
99107501  
[www.doverpublications.com](http://www.doverpublications.com)

**VECTOR  
PATTERN  
LIBRARY**



**GREEN  
EDITION**

*At Dover Publications we're committed to producing books in an earth-friendly manner and to helping our customers make greener choices.*

Manufacturing books in the United States ensures compliance with strict environmental laws and eliminates the need for international freight shipping, a major contributor to global air pollution. And printing on recycled paper helps minimize our consumption of trees, water and fossil fuels.

The text of this book was printed on paper made with 10% post-consumer waste and the cover was printed on paper made with 10% post-consumer waste. At Dover, we use Environmental Defense's Paper Calculator to measure the benefits of these choices, including: the number of trees saved, gallons of water conserved, as well as air emissions and solid waste eliminated.

Please visit the product page for *Vector Pattern Library* at [www.doverpublications.com](http://www.doverpublications.com) to see a detailed account of the environmental savings we've achieved over the life of this book.

By Alan Weller.

Copyright © 2011 by Dover Publications, Inc.  
Digital images copyright © 2011 by Dover Publications, Inc.  
All rights reserved.

*Vector Pattern Library* is a new work, first published by Dover Publications, Inc., in 2011.

The illustrations contained in this book and CD-ROM belong to the Dover Design Series. They are royalty-free, and may be used as a graphic resource provided no more than ten images are included in the same publication or project. The use of any of these images in book, electronic, or any other format for resale or distribution as royalty-free graphics is strictly prohibited.

For permission to use more than ten images, please contact:  
Permissions Department  
Dover Publications, Inc.  
31 East 2nd Street  
Mineola, NY 11501  
[rights@doverpublications.com](mailto:rights@doverpublications.com)

The CD-ROM file names correspond to the images in the book. All of the artwork stored on the CD-ROM can be imported directly into a wide range of design and editing programs on either Windows or Macintosh platforms. No further installation is necessary.

ISBN-13: 978-0-486-99107-8  
ISBN-10: 0-486-99107-5

Manufactured in the United States by Courier Corporation  
99107501  
[www.doverpublications.com](http://www.doverpublications.com)

# VECTOR PATTERN LIBRARY

200 VECTOR PATTERNS

DOVER PUBLICATIONS, INC. | Mineola, New York







Design Discipline - Pages 008 thru 072

Floral - Pages 073 thru 120

Zoomorphic - Pages 121 thru 138

Geometric - Pages 139 thru 207



## Using this Book and CD

This book and CD combination is meant to serve the dual function of inspiration and graphical resource. Within the book you will find three color illustrations of each of two hundred unique patterns. These color versions are meant to be used as is, or as a starting point for developing your own color scheme.

All of the patterns have been extracted from traditional designs, or composed using elements from traditional sources. Our objective is to furnish the fundamental shapes that comprise these designs, to be used as a "skeleton" for further development.

Included on the CD are the structural designs from which the book's illustrations are made; these are saved on the disc in three vector formats: Adobe Illustrator (AI), EPS and SVG. The AI files are best used with that software program; EPS files work with a wide variety of vector-editing software programs such as Corel Draw Suite and Adobe Illustrator; SVG files work well with the open-source program, Inkscape. A non-vector, JPG version of each image is also supplied on the CD. In addition to the three color versions of each pattern shown in the book, the CD also includes a grayscale version of each.

Beneath each illustration you will find convenient color formulas for all of the colors used in the illustration, these color formulas are expressed in CMYK and RGB color modes. They can be used in graphics programs that use a "color picker" to create colors.



	70c	0m	10y	10k		0r	175g	203b	
CMYK formula	0c	25m	90y	0k		254r	194g	51b	RGB formula
	20c	10m	10y	70k		86r	93g	97b	
	0c	0m	30y	0k		255r	250g	194b	

When a color is present in an illustration, but does not appear in the formula bar, the color is a **background color**, used for the purposes of the printed book, but not for the image files on the CD. Formulas for these background colors can be found on the CD in the file called **background\_colors.pdf**.

## Changing pattern colors in Adobe Illustrator

First, open either the EPS or AI version of your chosen image in Adobe Illustrator, by selecting: **File>Open**. Then, navigate to the appropriate folder and file on the Dover CD.

Next, with that image file open on screen, choose: **Window>Swatches**. The swatches palette appears. In it you will see swatches of each of the 2-4 colors that are used in the version of the image which you have opened. **Double-click** on the swatch that you wish to change, this opens the Swatch Options dialogue box.

In this dialogue box, be sure that the color mode is set to CMYK; the color can be altered by moving the sliders. By checking the Preview option it is possible to instantly view the changes in color as you make them. Once the color is changed to your liking click **OK**.

Each of the colors in the image can be changed by this method. Remember to save the image before closing.

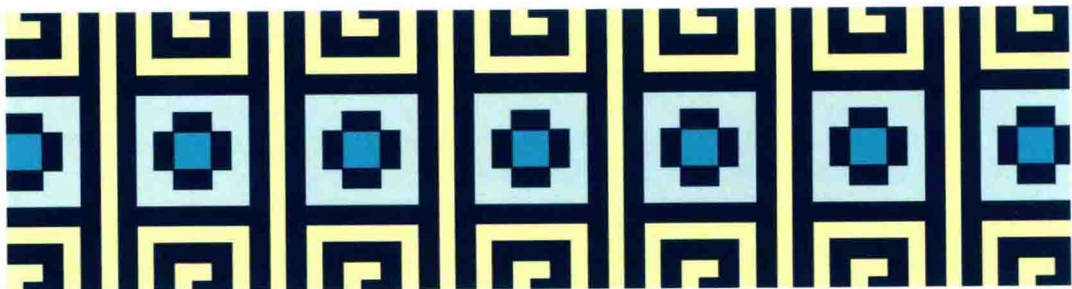
## Opening an EPS Vector Image in Adobe Photoshop


Launch Adobe Photoshop. On the top menu bar select: **File>Open**. In the Open window, navigate to the EPS folder which is in the Vector folder on the Dover CD; find and select the EPS vector file that you want to work with in Photoshop, then click the Open button.

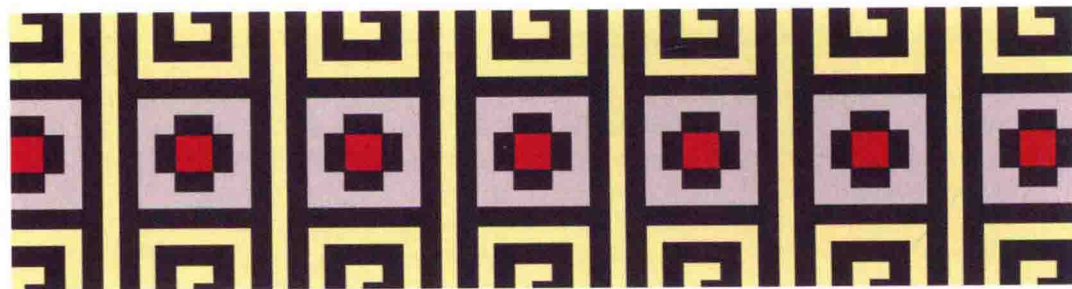
The Rasterize Generic EPS Format window appears on screen. In this window you are able to indicate a dimensional size, resolution and color mode for the image that you are opening; be sure to select a size that is large enough to suit your purpose. A typical resolution for color printing is 300 dpi, and the usual color mode for home printing is RGB color. After making these selections click on **OK**, the image will open in Photoshop. Because you are rasterizing the EPS, you will not be able to scale the image again without losing quality.

## Placing a EPS Vector in Adobe Photoshop

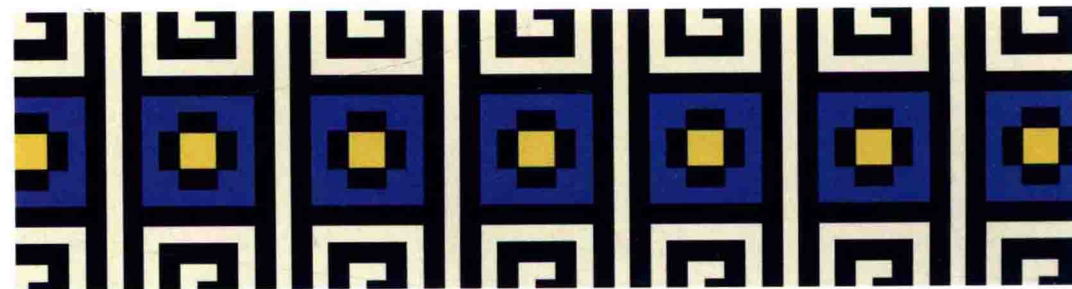
EPS files can also be inserted into existing Photoshop compositions. First, open a new or existing Photoshop document. On the top menu bar select **File>Place**. The Place window appears; navigate to the appropriate folder in the EPS folder, which is in the Vector folder on the Dover CD; locate the image that you want to place, and click the Place button. The EPS vector will appear within your blank document and will retain many of its vector qualities until it is rasterized. In Photoshop, this is called a Smart Object, since you can still edit it in its native format with a program such as Adobe Illustrator. Read more about Smart Objects in your Photoshop Web Help or the manual that accompanied your software.



0c	0m	30y	0k					255r	250g	194b
80c	0m	0y	80k					0r	65g	89b
20c	0m	10y	0k					202r	232g	229b
70c	0m	20y	0k					25r	190g	207b

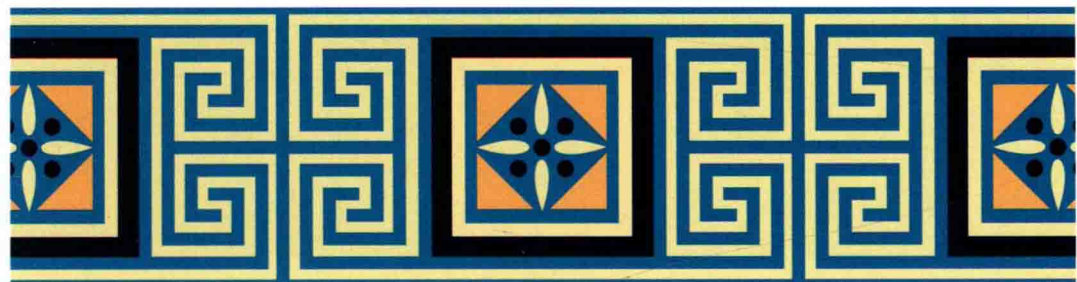


0c	0m	30y	10k					234r	227g	177b
50c	50m	50y	50k					82r	74g	72b
10c	10m	10y	10k					205r	201g	200b
0c	80m	70y	20k					199r	74g	64b



0c	0m	10y	10k					232r	229g	211b
80c	80m	80y	80k					16r	9g	6b
80c	60m	20y	0k					73r	106g	154b
0c	0m	75y	20k					215r	202g	106b

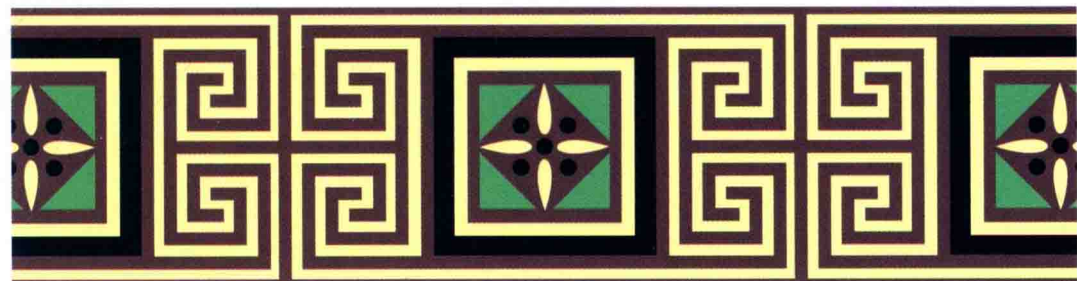




80c 80m 80y 80k  
 0c 0m 30y 10k  
 75c 0m 0y 40k  
 0c 20m 60y 10k



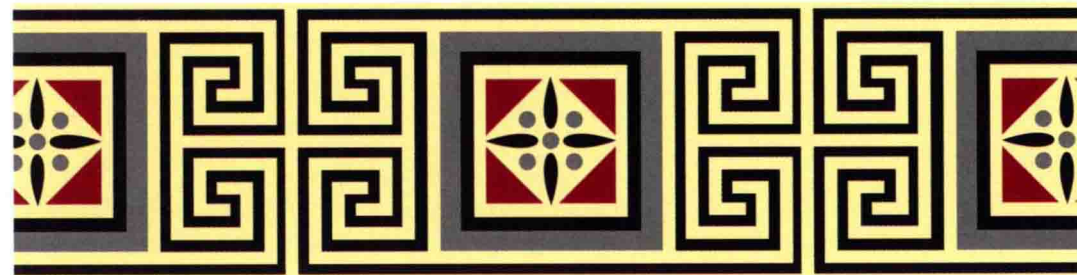
16r 9g 6b  
 234r 227g 177b  
 0r 128g 165b  
 230r 187g 122b



50c 50m 50y 30k  
 80c 40m 80y 80k  
 60c 0m 60y 0k  
 0c 0m 30y 0k



106r 96g 93b  
 0r 40g 47b  
 103r 193g 140b  
 255r 250g 194b

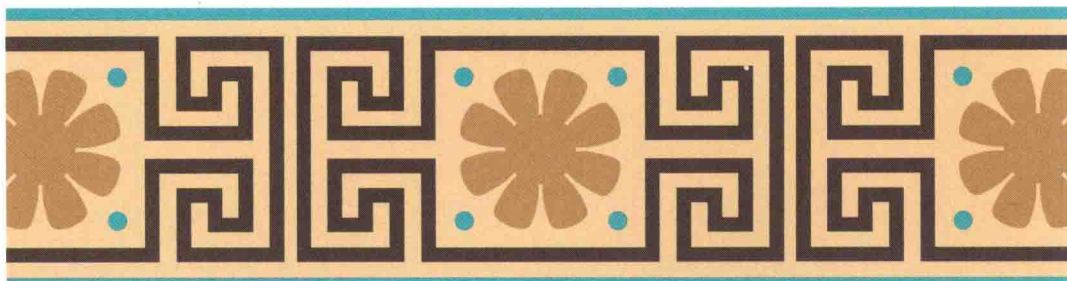


0c 0m 30y 5k  
 10c 10m 10y 50k  
 0c 90m 60y 40k  
 50c 50m 50y 80k



245r 237g 184b  
 131r 130g 131b  
 159r 37g 54b  
 44r 38g 36b

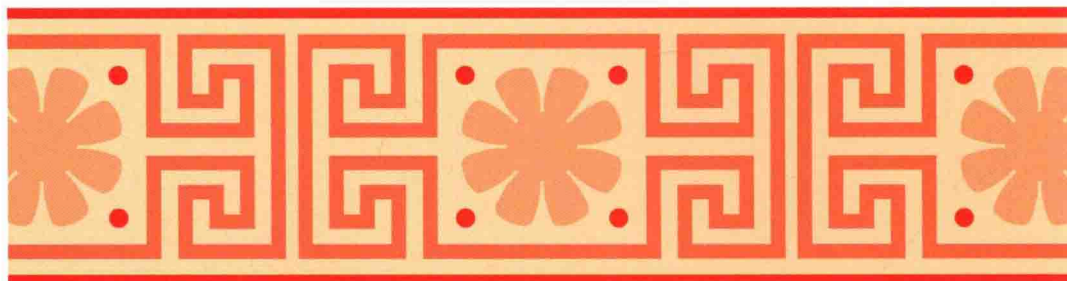




60c 0m 30y 0k  
 0c 15m 20y 70k  
 10c 20m 50y 20k  
 5c 10m 30y 5k



91r 196g 190b  
 109r 95g 87b  
 189r 165g 118b  
 228r 211g 175b



0c 80m 100y 0k  
 0c 55m 70y 0k  
 0c 35m 50y 0k  
 0c 15m 30y 0k



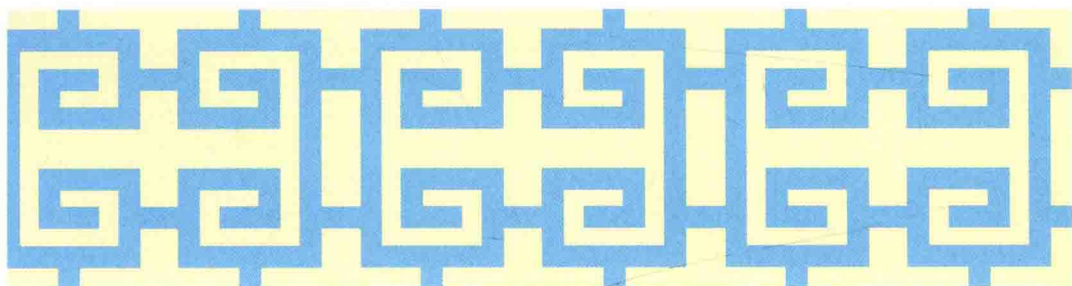
241r 90g 34b  
 246r 141g 89b  
 250r 179g 131b  
 255r 219g 180b



60c 60m 10y 40k  
 15c 80m 30y 40k  
 20c 20m 0y 20k  
 0c 10m 60y 10k



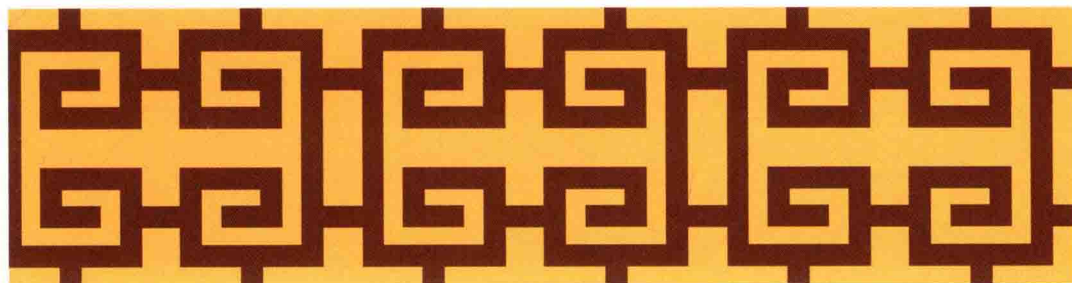
80r 74g 113b  
 141r 55g 84b  
 166r 164g 190b  
 233r 204g 117b



30c 0m 0y 40k  
 40c 0m 0y 10k  
 0c 0m 20y 5k



114r 151g 169b  
 129r 196g 226b  
 244r 238g 203b



0c 50m 70y 60k  
 0c 40m 60y 20k  
 0c 20m 70y 0k



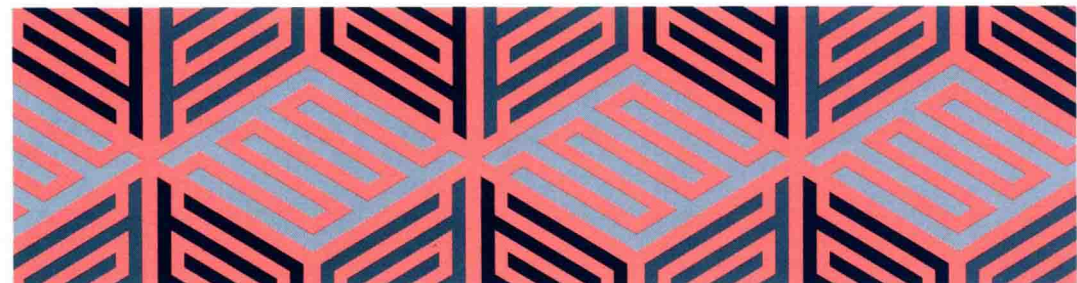
125r 73g 40b  
 205r 140g 93b  
 255r 205g 103b



60c 15m 60y 50k  
 60c 50m 70y 40k  
 30c 0m 70y 0k



60r 102g 77b  
 81r 82g 65b  
 186r 216g 118b



20c	0m	0y	20k
50c	0m	0y	50k
80c	0m	0y	80k



165r	195g	210b
61r	123g	148b
0r	65g	89b



20c	0m	70y	20k
50c	0m	50y	50k
80c	0m	80y	80k



174r	187g	97b
71r	120g	93b
0r	63g	30b



0c	20m	0y	20k
0c	50m	0y	50k
0c	80m	0y	80k



206r	177g	192b
143r	88g	115b
86r	9g	52b

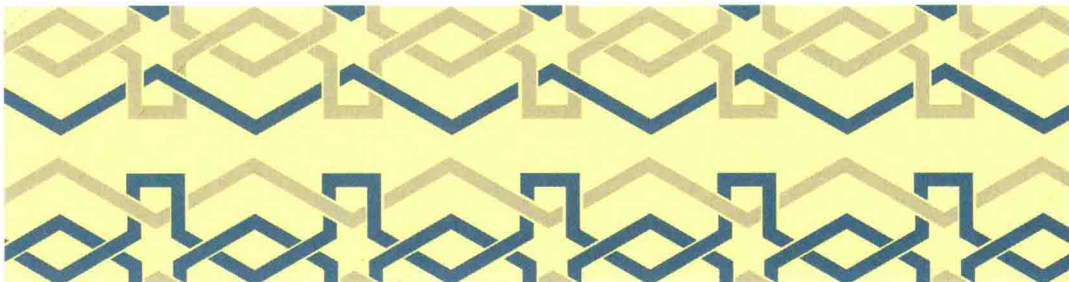




80c 0m 50y 0k  
10c 10m 10y 10k



0r 180g 156b  
205r 201g 200b



40c 0m 0y 40k  
0c 0m 20y 20k



94r 145g 168b  
212r 208g 179b



40c 80m 0y 40k  
0c 25m 20y 0k



109r 51g 109b  
251r 201g 188b





70c 30m 60y 40k  
25c 10m 40y 20k  
5c 0m 40y 20k



57r 99g 83b  
161r 171g 139b  
201r 201g 146b



20c 100m 50y 0k  
60c 0m 30y 0k  
0c 10m 100y 10k



200r 33g 93b  
91r 196g 190b  
234r 200g 0b



100c 70m 0y 0k  
100c 0m 0y 0k  
35c 0m 0y 0k



0r 91g 171b  
0r 174g 239b  
157r 220g 249b