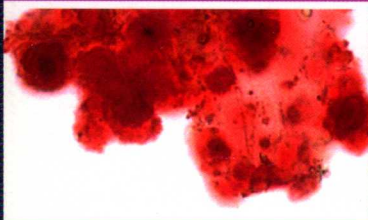
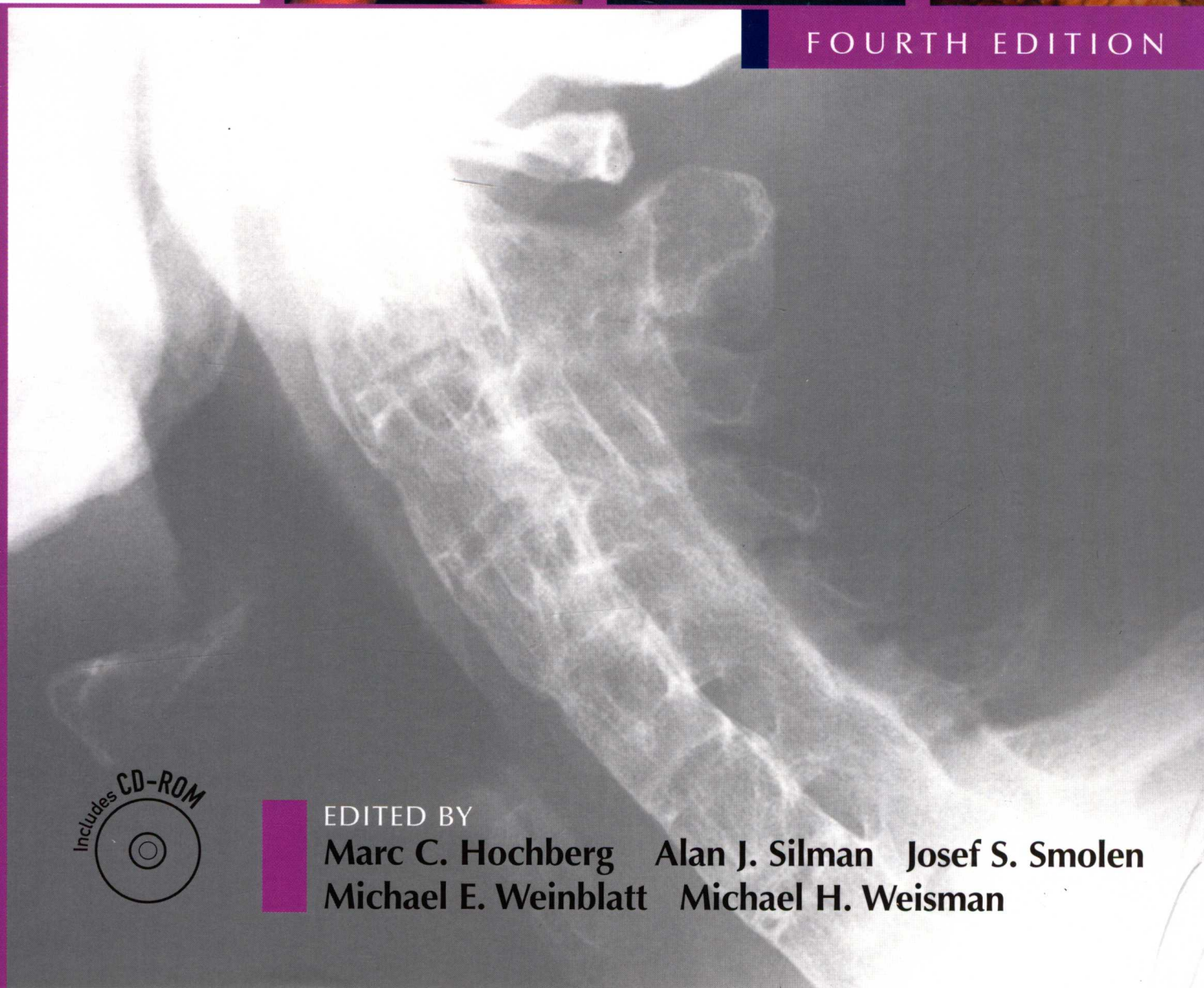


VOLUME 2

# RHEUMATOLOGY



FOURTH EDITION



MOSBY  
ELSEVIER

EDITED BY  
**Marc C. Hochberg   Alan J. Silman   Josef S. Smolen**  
**Michael E. Weinblatt   Michael H. Weisman**



FOURTH EDITION

# RHEUMATOLOGY

**Marc C. Hochberg, MD MPH**

Professor of Medicine;  
Head, Division of Rheumatology and Clinical Immunology  
University of Maryland School of Medicine  
Baltimore, Maryland, USA

**Alan J. Silman, MSC MD FRCP FMEDSCI**

Medical Director, Arthritis Research Campaign  
Chesterfield, UK;  
Professor, Rheumatic Diseases Epidemiology  
University of Manchester  
Manchester, UK

**Josef S. Smolen, MD**

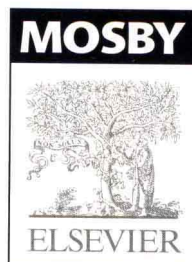
Professor of Medicine;  
Chairman, Division of Rheumatology,  
Department of Internal Medicine III,  
Medical University of Vienna;  
Chairman, Second Department of Medicine  
Center for Rheumatic Diseases  
Hietzing Hospital  
Vienna, Austria

**Michael E. Weinblatt, MD**

John R. and Eileen K. Riedman Professor of Medicine  
Harvard Medical School  
Division of Rheumatology, Immunology and Allergy  
Brigham and Women's Hospital  
Boston, Massachusetts, USA

**Michael H. Weisman, MD**

Chief, Division of Rheumatology  
Cedars-Sinai Hospital;  
Professor of Medicine  
University of California, Los Angeles School of Medicine  
Los Angeles, California, USA



**MOSBY**

**ELSEVIER**

An imprint of Elsevier Limited

© 2007, Elsevier Limited. All rights reserved.

The right of Marc C. Hochberg, Alan J. Silman, Josef S. Smolen, Michael E. Weinblatt and Michael H. Weisman to be identified as authors of this work has been asserted in accordance with the Copyright, Designs and Patents Act 1988

No part of this publication may be reproduced, stored in a retrieval system, or transmitted in any form or by any means, electronic, mechanical, photocopying, recording or otherwise, without the prior permission of the Publishers. Permissions may be sought directly from Elsevier's Health Sciences Rights Department, 1600 John F. Kennedy Boulevard, Suite 1800, Philadelphia, PA 19103-2899, USA: phone: (+1) 215 239 3804; fax: (+1) 215 239 3805; or, e-mail: [healthpermissions@elsevier.com](mailto:healthpermissions@elsevier.com). You may also complete your request on-line via the Elsevier homepage (<http://www.elsevier.com>), by selecting 'Support and contact' and then 'Copyright and permission'.

First published 1996

Second edition 2001

Third edition 2004

Fourth edition 2007

Reprinted 2008

ISBN: 978-0-323-03364-0

ISBN: 978-0-323-04429-5 (E-dition)

ISBN: 978-0323-04430-1 (Online)

#### **British Library Cataloguing in Publication Data**

A catalogue record for this book is available from the British Library

#### **Library of Congress Cataloging in Publication Data**

A catalog record for this book is available from the Library of Congress

#### **Notice**

Knowledge and best practice in this field are constantly changing. As new research and experience broaden our knowledge, changes in practice, treatment and drug therapy may become necessary or appropriate. Readers are advised to check the most current information provided (i) on procedures featured or (ii) by the manufacturer of each product to be administered, to verify the recommended dose or formula, the method and duration of administration, and contraindications. It is the responsibility of the practitioner, relying on their own experience and knowledge of the patient, to make diagnoses, to determine dosages and the best treatment for each individual patient, and to take all appropriate safety precautions. To the fullest extent of the law, neither the Publisher nor the Editors/Authors assumes any liability for any injury and/or damage to persons or property arising out or related to any use of the material contained in this book. It is the responsibility of the treating practitioner, relying on independent expertise and knowledge of the patient, to determine the best treatment and method of application for the patient.

#### **The Publisher**

**ELSEVIER**

your source for books,  
journals and multimedia  
in the health sciences

[www.elsevierhealth.com](http://www.elsevierhealth.com)

Working together to grow  
libraries in developing countries

[www.elsevier.com](http://www.elsevier.com) | [www.bookaid.org](http://www.bookaid.org) | [www.sabre.org](http://www.sabre.org)

**ELSEVIER**

**BOOK AID**  
International

**Sabre Foundation**

Printed in *Spain*

08 09 10 10 9 8 7 6 5 4 3 2

The  
Publisher's  
policy is to use  
**paper manufactured**  
from sustainable forests

# PREFACE

---

The fourth edition of *Rheumatology* is:

- The most comprehensive, authoritative rheumatology text, designed to meet the complete needs of all practicing and academic rheumatologists as well as arthritis related health care professionals and scientists interested in disorders of the musculoskeletal system.
- Firmly grounded on modern medical science, integrating the relevant basic biology with current clinical practice.
- Easily accessible, user-friendly, and a beautifully illustrated colour publication.
- Consistent in style and format, and each chapter is written to a strict template and rigorously edited.
- A genuinely international book, with editors, authors and material drawn from all over the world.
- Fully up-to-date, with carefully selected references to original work and key reviews up to and including articles published in the peer-reviewed literature through 2007.

## THE FOURTH EDITION OF *RHEUMATOLOGY* IS A COMPREHENSIVE AND EXCITING BOOK

The international team of editors representing the entire spectrum of academic and clinical rheumatology and biomedical, clinical and epidemiological research, has again brought together a group of internationally renowned authors to deliver essential information on the scientific basis of rheumatic disease and the definition, epidemiology, pathophysiology, clinical features, and management of all musculoskeletal and rheumatic diseases.

This edition builds on the success of the third edition. *Rheumatology 3e* was noted to be "[An] outstanding reference work ... the single text one should own ... A remarkable accomplishment, notable for its comprehensiveness as well as its wisdom" (JAMA). We

have retained all the unique features of the book. We have continued to use templates for each chapter, and have pursued a rigorous editorial policy in order to ensure that the content and format of the book remain both consistent and of the highest possible standard.

The introductory section, as well as that on principles of therapy, has been expanded with the inclusion of new chapters on signal transduction, innate immunity, nutrition and emerging therapeutic targets. A new section on imaging has been added. Every chapter has either been carefully revised or, in many cases, completely rewritten. There is new information on basic biomedical science, clinical therapeutics, disease and outcome assessment, and patient management and rehabilitation. While much new information has been added, we have also either combined or deleted eight chapters, so that the total extent of the book is now almost 200 pages shorter. We have also continued to improve the index, in order to make it easier for the reader to find the material that he or she wants.

The fourth edition includes a CD-ROM of the images in the book downloadable in Powerpoint® as well as access to [www.rheumtext.com](http://www.rheumtext.com) to enable rapid electronic searches of the contents of the entire 2-volume set. You will also find a complete library of easily downloadable electronic images, links to PUBMED and key society web sites, self-assessment tests, outcome measurement tools and patient information and continuous content updates.

The production of the fourth edition of *Rheumatology* has been a greatly enjoyable team effort. We would like to thank every one of the authors who have contributed to this or any previous edition of the book, as well as the excellent team at Elsevier. We look forward to bringing you a fifth edition of *Rheumatology* at the beginning of the next decade.



# LIST OF CONTRIBUTORS

## **Aryeh M. Abeles, MD**

Assistant Professor  
Division of Rheumatic Diseases  
University of Connecticut Health Center  
Farmington, CT  
USA  
Inflammation

## **Abby G. Abelson, MD**

Associate Staff  
Department of Rheumatic and Immunologic Disease  
Cleveland Clinic  
Cleveland, OH  
USA  
Management of osteoporosis

## **Stephen B. Abramson, MD**

Professor of Medicine and Pathology  
Department of Rheumatology and Medicine  
New York University School of Medicine  
Hospital for Joint Diseases  
New York, NY  
USA  
Neuropeptides, Free Radicals and Inflammation

## **David Maxwell Adlam, MBBS, BDS**

Consultant Maxillofacial Surgeon  
Addenbrooke's Hospital  
Cambridge  
UK  
Temporomandibular pain syndrome

## **Shizuo Akira, MD, PhD**

Professor  
Research Institute for Microbial Diseases  
Department of Host Defense  
Osaka University  
Suita, Osaka  
Japan  
Principles of Innate Immunity

## **Abdul-Wahab Al-Ailaf, MD, MSc**

Consultant Rheumatologist and Honorary Senior Lecturer  
King Faisal Specialist Hospital and Research Centre  
Riyadh  
Saudi Arabia  
Raynaud's Phenomenon

## **Graciela S. Alarcon, MD, MPH**

Professor, Jane Knight Lowe Chair of Medicine  
Division of Clinical Immunology and Rheumatology  
The University of Alabama  
Birmingham, AL  
USA  
Antibiotics

## **Daniel A. Albert, MD**

Professor of Medicine  
University of Pennsylvania  
Philadelphia, PA  
USA  
Miscellaneous arthropathies

## **Roy D. Altman, MD**

Professor of Medicine  
Chief of Rheumatology and Immunology  
University of Miami School of Medicine;  
Clinical Director  
Geriatric Research, Education and Clinical Center

University of Miami Veterans Affairs Medical Center  
Miami, FL  
USA  
Clinical features of OA

## **Antonios O. Aliprantis, MD, PhD**

Rheumatology Division  
Brigham and Women's Hospital  
Boston, MA  
USA  
Relapsing polychondritis

## **Paul Anderson, MD, PhD**

Professor of Medicine  
Division of Rheumatology, Immunology Allergy  
Brigham and Women's Hospital  
Boston, MA  
USA  
Principles of Adaptive Immunity

## **Christian E. Antoni, MD**

Department of Medicine III  
Friedrich Alexander University Erlangen  
Erlangen  
Germany  
Psoriatic arthritis: etiology and pathogenesis

## **Cynthia B. Aranow, MD**

Assistant Professor of Medicine  
Columbia University  
Columbia Presbyterian Medical Center  
New York, NY  
USA  
Treatment of non-renal lupus

## **Marc A. Asher, MD**

Professor of Orthopaedic Surgery  
University of Kansas Medical Center  
Kansas City, KS  
USA  
Legg-Perthes and other hip diseases in children

## **Alan Nathaniel Baer, MD**

Associate Professor of Medicine  
Department of Medicine  
Eerie County Medical Center  
Buffalo, NY  
USA  
Metabolic and Drug Induced Myopathies

## **Les Barnsley, BMed, PhD**

Associate Professor  
Head, Department of Rheumatology  
Concord Hospital  
Sydney  
Australia  
Neck Pain

## **Thomas Bardin, MD**

Professor of Rheumatology  
Federation de Rhumatologie  
Hopital Lariboisiere  
Paris  
France  
Primary Hyperlipidemias and Xanthomas

## **Joan Marie Bathon, MD**

Professor of Medicine  
Director, John Hopkins Arthritis Center  
Division of Rheumatology

Baltimore, MD  
USA  
Management of Rheumatoid Arthritis: Synovitis

## **Michael J. Battistone, MD**

Staff Physician  
Salt Lake City Veterans Affairs Medical Center  
Division of Rheumatology  
University of Utah School of Medicine and Health Sciences Center  
Salt Lake City, UT  
USA  
Disease-modifying antirheumatic drugs 3: methotrexate

## **Michael A. Becker, MD**

Professor of Medicine  
University of Chicago Medical Center  
Chicago, IL  
USA  
Etiology and Pathogenesis of Gout

## **Jill J. F. Belch, MD**

Professor of Medicine  
Ninewells Hospital  
Dundee  
UK  
Systemic sclerosis: Raynaud's phenomenon

## **Nicholas Bellamy, MD**

Professor of Rehabilitation Medicine  
Centre of National Research on Disability & Rehabilitation Medicine (CONROD)  
The University of Queensland  
Brisbane, Queensland  
Australia  
Principles of Outcome Assessment

## **Nadia Belmatoug, MD**

Senior Staff Physician & Consultant in Rheumatology  
Department of Internal Medicine  
Hôpital Beaujon  
Clichy  
France  
Gaucher's disease

## **Basia Belza, PhD, RN**

Associate Professor  
Department of Bio-behavioral Nursing and Health Systems  
University of Washington School of Medicine  
Seattle, WA  
USA  
Multidisciplinary Approach to RA

## **Michael Benjamin, PhD**

Professor of Musculoskeletal Biology and Sports Medicine Research School of Biosciences  
Cardiff University  
Cardiff  
UK  
Enthesopathies

## **Brian Maslin Berman, MD**

Professor of Family & Community Medicine  
University of Maryland School of Medicine  
Center for Integrative Disease  
Baltimore, MD  
USA  
Complementary and Alternative Medicine

**Bonnie L. Bermas, MD**

Assistant Professor of Medicine  
Harvard Medical School;  
Associate Rheumatologist, Robert B. Bringham Arthritis  
Center  
Brigham and Womens' Hospital  
Boston, MA  
USA  
Drugs in Pregnancy

**John P. Bilezikien, MD**

Professor of Medicine and Pharmacology  
Columbia University  
New York, NY  
USA  
Hyperparathyroidism

**Carol M. Black, MD**

Professor of Rheumatology  
Centre for Rheumatology  
Royal Free and University College  
London  
UK  
Management of Scleroderma

**Philip Blazar, MD**

Assistant Professor  
Department of Orthopaedic Surgery  
Brigham and Women's Hospital  
Boston, MA  
USA  
The Wrist and Hand

**Jane Frances Bleasel, MBBS, PhD**

Head of Department of Rheumatology  
Institute of Rheumatology and Orthopaedics  
Royal Prince Alfred Hospital  
Camperdown, New South Wales  
Australia  
Hemophilia  
TN Board  
Principles of arthritis surgery  
TN Board

**Nikolai Bogduk, BSc(Med), MB BS, PhD, MD, DSc, DipAnat, DipPainMed**

Director  
Department of Clinical Research  
Royal Newcastle Hospital  
Newcastle, New South Wales  
Australia  
Anatomy and biomechanics of the spine

**Markus Böhm, MD**

Department of Dermatology  
University of Münster  
Münster  
Germany  
Skin in rheumatic disease

**Marcy B. Bolster, MD**

Associate Professor of Medicine  
Medical University of South Carolina  
Charleston, SC  
USA  
Clinical Features of Systemic Sclerosis

**Stefano Bombardieri, MD**

Professor of Rheumatology  
Department of Internal Medicine  
Istituto di Patologia Medica dell 'Universita di Pisa  
Azienda Ospedaliera Pisana  
Pisa  
Italy  
Cryoglobulinemia

**David G. Borenstein, MD**

Clinical Professor of Medicine  
The George Washington University Medical Center  
Washington, DC  
USA  
Lumbar spine disorders

**Dimitrios T. Boumpas, MD**

Chairman, Department of Internal Medicine  
University of Crete Medical School  
Heraklion  
Greece  
Treatment-Renal Involvement

**Richard M. Brasington MD**

Associate Professor of Medicine  
Division of Rheumatology  
Washington University School of Medicine  
St. Louis, MO  
USA  
Clinical Features of Rheumatoid Arthritis

**Ferdinand Breedveld, MD**

Professor of Rheumatology  
Department of Rheumatology  
Leiden University Medical Center  
Leiden  
The Netherlands  
Emerging Therapeutic Targets; Small Molecules

**Barry Bresnihan, MD**

Professor of Rheumatology  
St Vincent's University Hospital  
Dublin  
Ireland  
Cytokine neutralizers: IL Inhibitors

**Anne C. Brower, MD**

Professor and Chair  
Eastern Virginia Medical School  
Norfolk, VA  
USA  
Seronegative spondyloarthropathies: imaging

**Ian Norman Bruce, MD**

Senior Lecturer in Rheumatology  
Rheumatism Research Centre  
University of Manchester  
Manchester  
UK  
Psoriatic Arthritis: Clinical Features

**J. Christopher Buckland-Wright, BSc, AKC, PhD, DSc**

Professor of Radiological Anatomy  
The University of London  
Applied Clinical Research Centre  
King's College London School of Biomedical Sciences  
London  
UK  
Imaging of Osteoarthritis

**William D. Bugbee, MD**

Associate Professor  
Department of Orthopedics  
University of California  
San Diego, CA  
USA  
The Hip

**Marwan A.S. Bukhari, MSc, PhD**

Consultant Rheumatologist  
University Hospitals of Morecambe Bay  
Royal Lancaster Infirmary  
Lancaster  
UK  
Mucopolysaccharidoses

**Nicholas D. Bushar, MD**

Graduate Student  
Department of Surgery  
University of Maryland School of Medicine  
Baltimore, MD  
USA  
Signal transduction

**Joel Buxbaum, MD**

Professor  
Head Division of Rheumatology Research  
Department of Molecular and Experimental Medicine  
LaJolla, CA  
USA  
The Amyloidoses

**Leonard H. Calabrese, DO**

Professor of Medicine  
Cleveland Clinic  
Lerner College of Medicine of Case Western Reserve  
University  
R.J. Fasenmyer Chair of Clinical Immunology  
Vice Chairman, Department of Rheumatic and  
Immunologic Diseases  
Cleveland, OH  
USA  
Rheumatic aspects of HIV Infection and Other  
Immunodeficient States  
Primary Angiitis of the Central Nervous System

**Jeffrey P. Callen, MD**

Professor of Medicine (Dermatology)  
Chief, Division of Dermatology  
Louisville, KY  
USA  
Cutaneous Vasculitis & Panniculitis

**Juan J. Canoso, MD**

Adjunct Professor of Medicine  
Tufts University  
Boston, MA  
USA  
Rheumatology  
ABC Medical Center  
Mexico City, Mexico  
Aspiration and Injection of Joints and Periarticular  
Tissues

**Hilary A. Capell, MD**

Consultant Rheumatologist of Honorary Senior Lecturer  
North Glasgow University Hospitals Division  
Centre for Rheumatic Diseases  
Glasgow  
UK  
Sulphasalazine

**John C. Carey, MD**

University of Utah Medical Center  
Salt Lake City, UT  
USA  
Management of osteoporosis

**Luis Jose Catoggio, MD, PhD**

Head, Rheumatology Section  
Section Rheumatologia  
Hospital Italiano de Buenos Aires  
Buenos Aires  
Argentina  
Management of Inflammatory Muscle Disease

**Timothy Edward Cawston, BSc, PhD**

Professor of Rheumatology  
School of Clinical Medical Sciences  
Musculoskeletal Research Group  
The Medical School



University of Newcastle  
Newcastle  
UK  
Tissue Destruction and Repair

**Sumapa Chaiamnuay, MD**  
Fellow in Rheumatology  
Division of Clinical Immunology and Rheumatology  
Department of Medicine  
The University of Alabama at Birmingham  
Birmingham, AL  
USA  
Antibiotics

**Michael Denis Chard, MBBS, MD**  
Consultant Rheumatologist  
Worthing Hospital  
Worthing  
UK  
The Elbow

**Lan X. Chen, MD, PhD**  
Clinical Assistant Professor  
Penn Presbyterian Rheumatology  
Philadelphia, PA  
USA  
Other Crystal Associated Arthropathies

**Ernest Choy, MD**  
Consultant Senior Lecturer  
Director of Sir Alfred Baring Garrod Clinical Trials Unit  
Academic Department of Rheumatology  
Weston Education Centre  
King's College London  
London  
UK  
Immunotherapies: T cell, B cell, Complement

**Daniel Clauw, MD**  
Professor of Medicine  
Division of Rheumatology  
Chronic Pain and Fatigue Research Center  
The University of Michigan  
Ann Arbor, MI  
USA  
Fibromyalgia and Related Syndromes

**Philip J. Clements, MD, MPH**  
Professor of Medicine/Rheumatology  
David Geffen School of Medicine at UCLA  
Los Angeles, CA  
USA  
Immunosuppressives (Chlorambucil, Cyclosporin, Cytoxan, Imuran, Mofetil, Tacrolimus)

**Jonathan S. Coblyn, MD**  
Associate Professor of Medicine  
Harvard Medical School;  
Director, Clinical Rheumatology  
Brigham and Womens' Hospital  
Boston, MA  
USA  
The Heart in Rheumatic Disease

**Nona T. Colburn, MD**  
Clinical Fellow  
Genetics and Genomics Branch  
National Institute of Arthritis and Musculoskeletal and Skin Diseases  
National Institutes of Health  
Bethesda, MD  
USA  
Hereditary periodic fevers

**Laura A. Coleman, PhD, RD**  
Research Specialist  
Epidemiology Research Center  
Marshfield Clinic Research Foundation  
Marshfield, WI  
USA  
Nutrition in rheumatic disease

**Felicia Cosman, MD**  
Associate Professor of Clinical Medicine  
Regional Bone Center  
Helen Hayes Hospital  
West Haverstraw, NY  
USA  
Pathogenesis of Osteoporosis

**Paul Creamer, MD**  
Consultant Rheumatologist  
Southmead Hospital  
Bristol  
UK  
Neuropathic Arthropathy

**Lindsey A. Criswell, MD, MPH**  
Professor of Medicine  
Division of Rheumatology  
University of California, San Francisco  
San Francisco, CA  
USA  
Genetics of the Major Histocompatibility Complex in RA

**Bruce N. Cronstein, MD**  
Professor of Medicine, Pathology, and Pharmacology  
New York University School of Medicine  
New York, NY  
USA  
Pharmacogenomics

**Mary K. Crow, MD**  
Professor of Medicine  
Benjamin M. Rosen Chair in Immunology and Inflammation Research  
Hospital for Special Surgery  
New York, NY  
USA  
Cellular Immunology in Systemic Lupus Erythematosus

**John J. Cush, MD**  
Director of Clinical Rheumatology  
Baylor Research Institute;  
Professor of Medicine and Rheumatology  
Baylor University Medical Center – Dallas  
Dallas, TX  
USA  
Cytokine Neutralizers: TNF Alpha

**Vivette D. D'Agati, MD**  
Professor of Pathology  
Columbia University College of Physicians & Surgeons  
New York, NY  
Immunopathology of Systemic Lupus Erythematosus

**Seamus E. Dalton, MD, BS**  
Consultant in Rehabilitation and Sports Medicine  
North Sydney Orthopaedic and Sports Medicine Center  
Sydney, New South Wales  
Australia  
The Shoulder

**Chad L. Deal, MD**  
Head, Center for Osteoporosis and Metabolism Bone Disease, Cleveland Clinic  
Cleveland, OH  
USA  
Management of Osteoporosis

**Karel De Ceulaer, MD**  
Consultant Rheumatologist  
Trade Centre  
Kingston  
Jamaica  
Joint and Bone Lesions in Hemoglobinopathies

**Chris Deighton, MD**  
Consultant Rheumatologist  
Department of Rheumatology  
Derbyshire Royal Infirmary  
Derby  
UK  
Genetics of Rheumatoid Arthritis

**David L. Delano, PhD**  
Postdoctoral Scientist  
New York University School of Medicine  
New York, NY  
USA  
Pharmacogenomics in Rheumatology

**Alessandra Della Rossa, MD**  
Department of Internal Medicine  
Division of Rheumatology  
University of Pisa  
Pisa  
Italy  
Cryoglobulinemia

**Pierre D. Delmas, MD, PhD**  
Professor of Medicine  
Claude Bernard University of Lyon;  
Director, INSERM Research  
Hôpital E Herriot  
Lyon  
France  
Investigations of Bone: Biochemical Markers

**David Dempster, MD**  
Associate Professor of Clinical Medicine  
Regional Bone Center  
Helen Hayes Hospital  
West Haverstraw, NY  
USA  
Pathogenesis of osteoporosis

**Gregory J. Dennis, MD**  
Director, Clinical Care and Training  
National Institutes of Arthritis and Musculoskeletal and Skin Disease  
National Institutes of Health  
Bethesda, MD  
USA  
Rheumatic Manifestations of Endocrine Disease

**Christopher P. Denton, PhD**  
Senior Lecturer & Consultant Rheumatologist  
Centre for Rheumatology  
Royal Free Hampstead NHS Trust  
London  
UK

**John Denton, MSc**  
Research Fellow  
Division of Degenerative Medicine  
The University of Manchester  
Manchester  
UK  
Synovial Fluid Analysis

**Jan Dequeker, MD, PhD**  
Professor Emeritus of Rheumatology  
Department of Rheumatology  
University Hospitals

Hospitals K.U. Leuven  
Leuven  
Belgium  
Bone Structure and Function

**John Dixon, MA, Mch (Orth)**  
Consultant Orthopaedic Oncology Surgeon  
Nash House  
Bristol  
UK  
Tumors of Bone

**Michael Doherty, MD**  
Professor of Rheumatology  
Academic Rheumatology  
Clinical Sciences Building  
City Hospital  
Nottingham  
UK  
Calcium Pyrophosphate Crystal-Associated Arthropathy

**Robyn Domsic, MD**  
Assistant Professor of Medicine  
Division of Rheumatology and Clinical Immunology  
University of Pittsburgh  
Pittsburgh, PA  
USA  
Epidemiology and Classification of Systemic  
Lupus Erythematosus

**Rachelle Donn, MB, ChB, PhD**  
Lecturer in Molecular Genetics  
ARC/EU  
Stopford Building  
Manchester  
UK  
Etiology and Pathogenesis of JRA

**Mary Anne Dooley, MD, MPH**  
Associate Professor of Medicine  
Division of Rheumatology Department of Medicine  
Thurston Arthritis Research Center  
Chapel Hill, NC  
USA  
Drug Induced Lupus

**Maxime Dougados, MD**  
Professor of Rheumatology  
Hospital Cochin  
Paris  
France  
Management of Limbs Osteoarthritis

**Michael F. Drummond, DPhil, MCom, BSc**  
Professor of Health Economics at the Centre for Health  
Economics  
University of York  
York  
UK  
Principles of Health Economics and Application to  
Rheumatic Disorders

**Roland M. du Bois, MA, MD**  
Professor of Respiratory Medicine  
Consultant Physician  
Royal Brompton Hospital  
London  
England  
UK  
The Lung in Rheumatic Disease

**Brandon E. Earp, MD**  
Clinical Fellow of Orthopaedic Surgery  
Department of Orthopaedic Surgery  
Brigham and Women's Hospital

Boston, MA  
USA  
The Wrist and Hand

**Keith B. Elkon, MD**  
Professor, Medicine and Head  
Division of Rheumatology;  
Adjunct Professor, Immunology  
Department of Medicine  
University of Washington  
Seattle, WA  
USA  
Autoantibodies in SLE

**Paul Emery, MA, MD**  
Arc Professor of Rheumatology  
Head of the Academic Section of Musculoskeletal  
Disease  
Chapel Averton Hospital  
Leeds  
UK  
Evaluation and Management of Early IA

**Bryan Thomas Emmerson, AO, MD, PhD**  
Emeritus Professor of Medicine  
Department of Medicine  
University of Queensland  
Princess Alexandra Hospital  
Brisbane, Queensland  
Australia  
The Management of Gout

**John M. Esdaile, MD, MPH**  
Professor of Medicine  
University of British Columbia;  
Scientific Director  
Arthritis Research Centre of Canada  
Vancouver, BC  
Canada  
Adult Stills Disease

**Luis R. Espinoza, MD**  
Professor and Chief  
Section of Rheumatology  
Department of Medicine  
Louisiana State University Health Sciences Center  
New Orleans, LA  
USA  
Mycobacterial, Brucella, Fungal, and Parasitic Arthritis

**Adel G. Fam, MD (deceased)**  
Professor Emeritus of Medicine  
Sunnybrook Health Sciences Centre  
Division of Rheumatology  
University of Toronto  
Toronto, Ontario  
Canada  
The Ankle and Foot

**Donna Farber, PhD**  
Associate Professor of Surgery  
University of Maryland School of Medicine  
Baltimore, MD  
USA  
Signal transduction

**Anders Fasth, MD, PhD**  
Professor of Pediatric Immunology  
Department of Pediatrics  
Göteborg University  
Göteborg  
Sweden  
Clinical Features, Special Problems and Presentations in  
Children

**Kenneth G. Faulkner, PhD**  
Chief Scientist  
GE Healthcare  
Associate Adjunct Professor  
University of Wisconsin  
Madison, WI  
USA  
DXA and Measurement of Bone

**Clair Francomano, MD**  
Senior Investigator  
Chief, Human Genetics & Integrative Medicine Section  
Laboratory of Genetics  
National Institute of Aging  
National Institutes of Health  
Bethesda, MD  
USA

**Jaap Fransen, PhD**  
Department of Rheumatology  
Radboud University  
Nijmegen Medical Center  
Nijmegen  
The Netherlands  
Evaluation and outcome of the patient with established  
rheumatoid arthritis

**Anthony John Freemont, MD**  
Professor of Osteoarticular Pathology  
The University of Manchester  
Manchester  
UK  
Synovial Fluid Analysis

**Izzett Fresco, MD**  
Associate Professor of Medicine  
University of Istanbul  
Istanbul  
Turkey  
Behçet's Syndrome

**Kevin B. Fricka, MD**  
Chief Resident  
Department of Orthopaedics  
University of California  
San Diego, CA  
USA  
The hip

**Marvin J. Fritzler, MD, PhD**  
Faculty of Medicine  
University of Calgary  
Calgary, AB  
Canada  
Laboratory Tests in Rheumatic Disorders

**Daniel Furst, MD**  
Carl M. Pearson Professor of Rheumatology  
Geffen School of Medicine at the University of Los  
Angeles  
Rehabilitation Institute  
Los Angeles, CA  
USA  
Immunosuppressives (Chlorambucil, Cyclosporin,  
Cytoxan, Imuran, Mofetil, Tacrolimus)

**Sherine E. Gabriel, MD, MSc**  
Professor of Medicine and Epidemiology  
Mayo Clinic  
Rochester, MN  
USA  
Principles of Health Economics and Application to  
Rheumatic Disorders



**Bernat Galarraga, LMC, MRCP**

Clinical Lecturer  
The Institute of Cardiovascular Research  
Vascular and Inflammatory Diseases  
Research Unit University Division of Medicine and  
Therapeutics  
Ninewells Hospital and Medical School  
Dundee  
UK  
Raynaud's Phenomenon

**Gregory Gardner, MD**

Adjunct Associate Professor  
Bone and Joint Physician  
Orthopaedics and Sports Medicine  
University of Washington School of Medicine  
Seattle, WA  
USA  
The musculoskeletal system and joint physiology

**Boel Andersson Gäre, MD, PhD**

Associate Professor in Pediatrics  
Department of Child Public Health  
Qulturum  
Jönköping  
Sweden  
Clinical Features, Special Problems and Presentations in  
Children

**Patrick Garnero, DSc, PhD**

Director of Research  
Synarc  
Lyon  
France  
Investigations of Bone: Biochemical Markers

**J.S. Hill Gaston, MA, BM, PhD**

Professor of Rheumatology  
Department of Medicine  
University of Cambridge  
Addenbrooke's Hospital  
Cambridge  
UK  
Cellular Immunity in RA

**Allan C. Gelber, MD, MPH, PhD**

Associate Professor of Medicine  
Director, Rheumatology Fellowship Program  
Johns Hopkins University School of Medicine  
Baltimore, MD  
USA  
Classification and Epidemiology of Inflammatory  
Vascular Disease

**Danielle Marie Gerlag, MD**

Assistant Professor of Medicine  
Division of Clinical Immunology and Rheumatology  
Academic Medical Center  
Amsterdam  
The Netherlands  
Minimally Invasive Procedures

**Piet Geusens, MD, PhD**

Professor of Rheumatology  
Department of Medicine/Rheumatology  
University Hospital  
Maastricht  
The Netherlands  
Osteoporosis: Clinical Features

**Terrence Gibson, MD**

Consultant Physician  
Department of Rheumatology  
Guy's Hospital  
London

UK

Clinical Features of Gout

**John Tyler Giles, MD**

Assistant Professor of Medicine  
John Hopkins University  
John Hopkins Arthritis Center  
Baltimore, MD  
USA  
Management of Rheumatoid Arthritis: Stynovitis

**Ellen M. Ginzler, MD, MPH**

Professor of Medicine  
SUNY-Downstate Medical Center  
Brooklyn, NY  
USA  
Systemic Lupus Erythematosus: Treatment of Non-  
Renal Lupus

**Dafna D. Gladman, MD**

Professor of Medicine  
Centre for Prognosis Studies in the Rheumatic Disease  
Toronto Western Hospital  
Toronto, Ontario  
Canada  
SLE Clinical Features

**Caroline Gordon, MA, MD**

Reader in Rheumatology  
University of Birmingham  
Consultant Rheumatologist  
Sandwell and West Birmingham Hospitals  
Birmingham  
UK  
Assessing Disease Activity and Outcome in Systemic  
Lupus Erythematosus

**Jörg J. Goronzy, MD**

Director  
Kathleen B. and Mason I. Lowence  
Center for Human Immunology  
Department of Medicine  
Atlanta, GA  
USA  
Polymyalgia rheumatica and giant cell arteritis

**Simon Görtz, MD**

Research Fellow  
Department of Orthopaedic Surgery  
University of California, San Diego  
La Jolla, CA  
USA  
The hip

**Rachel Gorodkin, MBChB, MRCP, MPhil**

ARC Clinical Research Fellow  
University of Manchester and Salford Royal  
Hospitals NHS Trust  
UK  
Algodystrophy/Reflex Sympathetic Dystrophy  
Syndrome

**Elena Gournelos**

The Complementary Medicine Program  
University of Maryland School of Medicine  
Baltimore, MD  
USA  
Complementary and Alternative Medicine

**Rodney Grahame, CBE, MD**

Hypermobility Clinic  
Professor,  
Centre for Rheumatology  
UCL Hospitals  
London

UK

Hypermobility Syndrome

**Ellen M. Gravallese, MD**

Chief, Division of Rheumatology  
Professor of Medicine and Cell Biology  
University of Massachusetts Medical School  
Worcester, MA  
USA  
Rheumatoid Synovitis and Pannus

**Michael J. Green, MRCP, MBChB**

Consultant Rheumatologist  
Department of Rheumatology  
York Hospital  
York  
UK  
Evaluation and Management of Early IA

**Loïc P. Guillevin, MD**

Professor of Medicine  
Department of Internal Medicine  
Hospital Cochin  
Universite Paris 5  
Paris  
France  
Churg-Strauss syndrome

**Karlene Hagley**

c/o Karel De Ceulaer, MD  
Consultant Rheumatologist  
Trade Centre  
Kingston  
Jamaica  
Joint and Bone Lesions in Hemoglobinopathies

**Alan J. Hakim, MB, Bchir, MA**

Consultant Rheumatologist and General Physician  
Hypermobility Clinic  
Centre for Rheumatology  
London  
UK  
Hypermobility Syndrome

**Vedat Hamuryudan, MD**

Professor of Medicine  
Cerrahpasa Medical Faculty  
University of Istanbul  
Istanbul  
Turkey  
Behcet's Syndrome

**Boulos Haraoui, MD**

Associate Professor of Medicine  
Department of Rheumatology  
Hopital Notre Dame du-CHUM  
Montreal, Quebec  
Canada  
Leflunomide

**John B. Harley, MD, PhD**

Professor of Medicine  
University of Oklahoma;  
Member and Head, Arthritis and Immunology Program  
Oklahoma Medical Research Foundation  
University of Oklahoma Health Science Center  
Oklahoma City, OK  
USA  
Genetics of lupus

**E. Nigel Harris, MD**

Vice Chancellor  
The University of the West Indies  
Kingston  
Jamaica

Antiphospholipid Syndrome: Diagnosis and Management

**Johanna Mieke Wilhelmina Hazes, MD, PhD**  
Erasmus University Medical Center  
Department of Rheumatology  
The Netherlands  
Management of Extra-Articular Disease and Complications

**Dick Heinegård, MD, PhD**  
Professor of Cell and Molecular Biology  
Department of Experimental Medical Science  
Section for Cell and Matrix Biology  
Lund University  
Lund  
Sweden  
Articular Cartilage

**Jenny E. Heller, MPhil**  
Division of Rheumatology  
Brigham and Women's Hospital  
Boston, MA  
USA  
Lyme Disease

**Elisabeth Market Hermann, MD**  
Department of Internal Medicine IV (Rheumatology, Immunology, Nephrology)  
Wiesbaden  
Germany  
Septic Arthritis, Osteomyelitis, Gonococcal and Syphilitic Arthritis

**Ariane L. Herrick, MD**  
Senior Lecturer in Rheumatology  
The University of Manchester  
Rheumatic Disease Centre  
Division of Medicine & Neurosciences -Hope  
Clinical Sciences Building  
Hope Hospital  
Salford  
UK  
Algodystrophy/Reflex Sympathetic Dystrophy Syndrome

**Gary S. Hoffman, MD, MS**  
Professor and Harold C. Schott Chairman  
of Rheumatic and Immunologic Diseases  
Lerner College of Medicine  
Cleveland Clinic Foundation  
Cleveland, OH  
USA  
Wegener's Granulomatosis and Lymphomatoid Granulomatosis

**Vernon M. Holers, MD**  
Professor of Medicine and Immunology  
Division of Rheumatology  
University of Colorado Health Sciences Center  
Denver, CO  
USA  
The Complement System

**Tracy S. Holtzman, MS, PT**  
Physical Therapist  
Division of Rheumatology/Immunology  
St. Louis, MO  
USA  
Rehabilitation in Juvenile Idiopathic Arthritis

**Osvaldo Hübscher, MD**  
Associate Professor of Medicine (Rheumatology)  
CEMIC Medical School  
Buenos Aires

Argentina  
Pattern Recognition in Arthritis

**Thomas WJ Huizinga, MD**  
Professor of Rheumatology  
Leiden University Medical Center  
Leiden  
The Netherlands  
Other Drugs in Rheumatic Disease  
Emerging therapeutic targets

**Gabor G. Illei, MD**  
Head, Sjögren's Syndrome Clinic  
Gene Therapy and Therapeutics Branch  
National Institute of Dental and Craniofacial Research  
National Institutes of Health (NIH)  
Bethesda, MD  
USA  
The Netherlands  
Treatment-Renal Involvement

**Robert Inman, MD**  
Professor of Rheumatology  
Department of Medicine and Rheumatology  
Toronto Western Hospital  
Toronto  
Canada  
Reactive Arthritis: Etiology and Pathogenesis

**Zacharia Issac, MD**  
Instructor Physical Medicine & Rehabilitation  
Harvard Medical School  
Director, Interventional Physiatry  
Brigham & Women's Hospital  
Orthopedic/Arthritis Center  
Boston, MA  
USA  
Lumbar Spine Disorders

**Maura Daly Iversen, PT, DPT, ScD, MPH**  
Professor and Associate Director  
MGH Institute of Health Professions  
Boston, Massachusetts  
Instructor in Medicine  
Division of Rheumatology, Immunology & Allergy  
Brigham & Women's Hospital  
Harvard Medical School  
Cambridge, MA  
USA  
Arthritis Patient Education: From the Clinical Encounter to a Public Health Approach

**Douglas A. Jabs, MD, MBA**  
Professor of Ophthalmology and Medicine  
The Johns Hopkins University School of Medicine  
Professor of Epidemiology  
The Johns Hopkins Bloomberg School of Public Health  
The Wilmer Eye Institute  
Baltimore, MD  
USA  
The Eye and Rheumatic Disease

**Joanne Marie Jordon, MD, MPH**  
Associate Professor, Medicine & Orthopaedics  
Thurston Arthritis Research Center  
University of North Carolina  
Chapel Hill, NC  
USA  
Epidemiology and Classification of OA

**Melanie S. Joy, Pharm D**  
Associate Professor of Medicine  
University of North Carolina  
School of Medicine, Division of Nephrology  
and Hypertension

Chapel Hill, NC  
USA  
Systemic Lupus Erythematosus: Drug-Induced Lupus

**Bashar Kahaleh, MD**  
Professor of Medicine  
Division of Rheumatology  
Medical College of Ohio  
Toledo, Ohio  
USA  
Etiology and Pathogenesis of Systemic Sclerosis

**Tsuneyasu Kaisho, MD, PhD**  
Team Leader  
Laboratory for Host Defense, RCAI, RIKEN  
Yokohama City, Kanagawa  
Japan  
Principles of Innate Immunity

**C.G.M. Kallenberg, MD, PhD**  
Head, Department of Clinical Immunology, University  
Medical Center Groningen  
Groningen  
The Netherlands  
Biology and Immunopathogenesis of Vasculitis

**Yuka Kanno, MD, PhD**  
Staff Scientist  
Lymphocyte Cell Biology Section  
Molecular Immunology and Inflammation Branch  
National Institute of Arthritis and Musculoskeletal and Skin Diseases  
Bethesda, MD  
USA  
Principles and techniques in molecular biology

**Dimitrios G. Kassimos, MSc, MD**  
Consultant Rheumatologist  
Rheumatology Unit  
401 Military Hospital of Athens  
Athens  
Greece  
Neuropathic arthropathy

**Daniel L. Kastner, MD, PhD**  
Chief, Genetics and Genomics Branch  
National Institute of Arthritis and Musculoskeletal and Skin Diseases  
National Institutes of Health  
Bethesda, MD  
USA  
Molecular Biology

**Jeffrey N. Katz, MD, MSc**  
Associate Professor of Medicine and Orthopaedic Surgery  
Division of Rheumatology, Immunology and Allergy  
Brigham and Women's Hospital  
Boston, MA  
USA  
Lumbar Spine Disorders

**Arthur F. Kavanaugh, MD**  
Professor of Medicine  
University of California San Diego;  
Director, Center for Innovative Therapy  
Division of Rheumatology, Allergy, Immunology  
University of California, San Diego  
La Jolla, CA  
USA  
Cytokine Neutralizers: TNF Alpha

**Tomisaku Kawasaki, MD**  
Director, Kawasaki Disease Research Center  
Chiyodo-Ku, Tokyo  
Japan  
Kawasaki Disease



**Peter R. Kay, MBChB, BA**  
Consultant Orthopaedic Surgeon  
Wrightington Hospital for Joint Disease  
Wigan  
UK  
Principles of Arthritis Surgery

**Richard A. Kay, MB, ChB, PhD, ILTM**  
Senior Lecturer  
Unit of Cellular and Molecular Biology  
The Dental School  
University of Dundee Medical School  
Dundee  
UK  
The principles of adaptive immunity

**Andrew Keat, MD**  
Consultant Rheumatologist  
Dept. of Rheumatologist  
Northwick Park Hospital  
Harrow, Middlesex  
Reactive Arthritis: Clinical Features and Treatment

**Jennifer A. Kelly, BS**  
Arthritis and Immunology Program  
Oklahoma Medical Research Foundation  
Oklahoma City, OK  
USA  
Genetics of lupus

**Edward C. Keystone, MD**  
Professor of Medicine and Director  
The Rebecca MacDonald Centre for Arthritis and Autoimmunity  
Mount Sinai Hospital  
Toronto, ON  
Canada  
Leflunomide

**Munther A. Khamashta, MD, PhD**  
Senior Lecturer and Consultant Physician  
Lupus Unit  
The Rayne Institute  
St. Thomas Hospital  
London  
UK  
Antiphospholipid Syndrome: Diagnosis and Management

**Gabrielle Helen Kingsley, MB, PhD**  
Reader in Rheumatology  
GKT School of Medicine  
King's College London and  
Consultant Rheumatologist  
University Hospital Lewisham  
Immunotherapies: T Cell, B Cell, Complement

**Marisa Klein-Gitelman, MD**  
Division of Pediatric Immunology and Rheumatology  
Northwestern University Medical School  
The Children's Memorial Hospital  
Chicago, IL  
USA  
Connective tissue disease in children

**Lloyd Berl Klickstein, MD, PhD**  
Assistant Professor of Medicine  
Brigham & Women's Hospital  
Boston, MA  
USA  
Dialysis Arthroplasty

**Alisa E. Koch, MD**  
William D. Robinson and Frederick  
Huetwell Endowed Professor

University of Michigan Health System  
Internal Medicine/Rheumatology and Veterans' Administration  
Ann Arbor, MI  
USA  
Angiogenesis in RA

**Matthew F. Koff, PhD**  
Senior Research Fellow  
Biomechanics and Motion Analysis Laboratory  
Mayo Clinic  
Rochester, MN  
USA  
Biomechanics of Peripheral Joints

**Virginia B. Krauss, MD, PhD**  
Associate Professor of Medicine  
Division of Rheumatology  
Duke University Medical Center  
Durham, NC  
USA  
Rare OA: Ochronosis, Kashanbeck, Castleman's Disease

**Guenther J. Krejs, MD**  
Professor & Chairman  
Department of Medicine  
Karl-Franzens University  
Medizinische Klinik  
Graz  
Austria  
Gastrointestinal Tract and Rheumatic Disease

**Hilal Maradit Kremers, MD, MSc**  
Assistant Professor of Medicine  
Mayo Clinic  
Rochester, MN  
USA  
Principles of Health Economics and Application to Rheumatic Disorders

**Peter Kroling, MD**  
Professor of Physical Medicine  
Insititue of Med. Balneology and Climatology  
Ludwig-Maximilians-University  
Munich  
Germany  
Principles of Rehabilitation

**Nancy E. Lane, MD**  
Director and Endowed Professor  
Aging Center, Medicine and Rheumatology  
University of California at Davis Medical Center  
Sacramento, CA  
USA  
Bone Structure and Function

**Robert Landewé, MD**  
Associate Professor  
Department Internal Medicine/Rheumatology  
University Hospital Maastricht  
Maastricht  
The Netherlands  
Classification and Epidemiology of Spondylitis

**Philipp Karl Lang, MD, MBA**  
Associate Professor  
Director, Musculoskeletal Division  
Department of Radiology  
Brigham and Women's Hospital  
Boston, MA  
USA  
MRI

**Carol A. Langford, MD, MHS**  
Director, Center for Vasculitis

Department of Rheumatic and Immunologic Diseases  
The Cleveland Clinic Foundation  
Cleveland, OH  
USA  
Takayasu's Arteritis

**Thomas J. Learch, MD**  
Assistant Professor of Radiology  
Department of Radiology  
Keck School of Medicine  
University of Southern California  
Los Angeles, CA  
USA  
Imaging of rheumatoid arthritis

**George Thomas Lewith, MA, DM**  
Senior Research Fellow, University of Southampton  
Visiting Professor, University of Westminster  
Complementary Medicine Research Unit  
Primary Medical Care  
Aldermoor Health Centre  
Southampton  
UK  
Complementary and Alternative Medicine

**Carol B. Lindsley, MD**  
Professor and Chair,  
Director, Pediatric Rheumatology  
Department of Pediatric  
University of Kansas Medical Center  
Kansas City, KS  
USA  
Legg-Perthes and Other Hip Diseases in Children

**Geoffrey Owen Littlejohn, MD, MPM, MBBS**  
Associate Professor of Medicine  
Department of Rheumatology  
Monash Medical Center  
Clayton, Victoria  
Australia  
Diffuse Idiopathic Skeletal Hyperstosis

**L. Stefan Lohmander, MD, PhD**  
Professor of Orthopaedics  
Department of Orthopaedics  
Lund University  
Lund University Hospital  
Lund  
Sweden  
Osteoarthritis: Pathology and Pathogenesis

**Pilar Lorenzo, PhD**  
Scientist  
Department of Cell and Molecular Biology  
Lund University  
Lund  
Sweden  
Articular Cartilage

**Carlos J. Lozada, MD**  
Associate Professor of Medicine  
Director, Rheumatology Training Program  
Division of Rheumatology and Immunology  
The University of Miami  
Miami, FL  
USA  
Clinical features of OA

**Thomas Luger, MD**  
Professor of Dermatology  
Department of Dermatology  
University of Munster  
Münster  
Germany  
Skin and Rheumatic Disease



**Ingrid E. Lundberg, MD, PhD**

Professor of Rheumatology  
Rheumatology Unit  
Department of Medicine  
Karolinska University Hospital  
Karolinska Institutet  
Stockholm  
Sweden  
Etiology and Pathogenesis of Inflammatory Disease

**Harvinder S. Luthra, MD**

John F. Finn Minnesota Arthritis Foundation  
Professor Emeritus; Chair, Division of Rheumatology  
Mayo Clinic College of Medicine  
Rochester, MN  
USA  
Relapsing Polychondritis

**Alex MacGregor MD, MA**

Honorary Consultant  
Twin Research & Epidemiology Unit  
St. Thomas' Hospital  
London  
UK  
Classification and Epidemiology

**Megan MacNeil**

Fellow  
University of Texas Medical School  
Houston, TX  
USA  
Assessing Disease Activity and Outcome in Scleroderma

**Rajan Madhok, MD**

Consultant Physician & Rheumatologist  
Centre for Rheumatic Diseases  
Glasgow Royal Infirmary  
Castlestreet  
Glasgow  
UK  
Sulphasalazine

**Maren Lawson Mahowald, MD**

Professor of Medicine University of Minnesota  
Rheumatology Section Chief  
Minneapolis VA Medical Center  
Minneapolis, MN  
USA  
Principles of Opiate Management

**Walter P. Maksymowych, MD**

Senior Scholar Alberta Heritage Foundation  
for Medical Research  
Professor of Medicine  
University of Alberta  
Edmonton, Alberta  
Canada  
Etiology, Pathogenesis and Pathology of Ankylosing Spondylitis

**Susan Manzi, MD, MPH**

Associate Professor of Medicine and Epidemiology  
University of Pittsburgh  
Lupus Center of Excellence  
Pittsburgh, PA  
USA  
Epidemiology and Classification

**Joan C. Marini, MD, PhD**

Chief, Bone and Extracellular Matrix Branch  
National Institute of Child Health and Human Development  
National Institutes of Health  
Bethesda, MD  
USA  
Heritable Connective Tissue Disorders

**Pierre Maroteaux, MD**

Hôpital des Enfants Malades  
Paris  
France  
Mucopolysaccharidoses

**Javier Marquez, MD**

Visiting Scholar  
Section of Rheumatology  
Department of Medicine  
Louisiana State University Health Sciences Center  
New Orleans, Louisiana  
USA  
Mycobacterial, Brucella, Fungal, and Parasitic Arthritis

**Manuel Martiuez-Laviu, MD**

Professor of Rheumatology  
National Institute of Cardiology  
National Autonomous University  
of Mexico  
Juau Badiuuo  
Mexico  
Clubbing and Hypertrophic Osteoarthropathy

**Eric L. Matteson, MD, MPH**

Professor of Medicine  
Division of Rheumatology  
Mayo Clinic of Medicine  
Rochester, MN  
USA  
Extraarticular Features of Rheumatoid Arthritis and Systemic Involvement

**Maureen D. Mayes, MD, MPH**

Professor of Medicine  
Department of Internal Medicine  
Division of Rheumatology  
University of Texas  
Houston Medical School  
Houston, TX  
USA  
Assessing Disease Activity and Outcome in Scleroderma

**Rex M. McCallum, MD**

Clinical Professor of Medicine  
Division of Rheumatology  
Duke University School of Medicine  
Durham, NC  
USA  
Cogan's syndrome

**Geraldine M. McCarthy, MD**

Consultant Rheumatologist  
Mater Misericordiae University Hospital;  
Adjunct Associate Professor,  
Department of Clinical Pharmacology  
Royal College of Surgeons in Ireland  
Dublin  
Ireland  
Basic Calcium Phosphate Crystal Deposition Disease

**Dennis McGonagle, PhD**

MRC Clinician Scientist  
Professor of Investigative Rheumatology  
Molecular Medicine Unit  
University of Leeds  
The School of Biomedical Sciences  
Leeds  
UK  
Enthesopathies

**Iain B. McInnes, BSc, MChB, PhD**

Professor of Experimental Disease  
Centre for Rheumatic Diseases  
University of Glasgow  
Glasgow Royal Infirmary  
Glasgow

UK

Emerging Therapeutic Targets

**Lachy McLean, MD, PhD**

Clinical Immunology and Analgesia  
Merck and Company  
Rahway, NJ  
USA  
Etiology and Pathogenesis of Gout

**Thomas A. Medsger, Jr., MD**

Professor of Medicine  
Division of Rheumatology & Clinical Immunology  
University of Pittsburgh School of Medicine  
Pittsburgh, PA  
USA  
Clinical Features, Classification and Epidemiology of Inflammatory Disease

**L. Joseph Melton, III, MD**

Michael M. Eisenberg Professor  
Department of Health Sciences Research  
Mayo Clinic College of Medicine  
Rochester, MN  
USA  
Epidemiology, Classification and History of Osteoporosis

**Herman Mielants, MD**

Professor of Rheumatology  
Department Rheumatology  
University Hospital  
Gent  
Belgium  
Enteropathic Arthropathies: Diagnosis and Treatment  
Gastrointestinal tract and rheumatic disease

**Michael L. Miller, MD**

Division of Pediatric Immunology and Rheumatology  
Northwestern University Medical School  
The Children's Medical Hospital  
Chicago, IL  
USA  
Connective tissue disease in children

**Paul D. Miller, MD**

Clinical Professor of Medicine  
University of Colorado School of Medicine;  
Director, Colorado Center for Bone Research  
Lakewood, CO  
USA  
Renal Osteodystrophy

**Marian A. Minor, PT, MSPH, PhD**

Professor of Physical Therapy  
Department of Physical Therapy  
School of Health Professions  
University of Missouri  
Columbia, MO  
USA  
Multidisciplinary Approach to RA

**Dimitris I. Mitsias, MD, PhD**

Fellow  
Department of Pathophysiology  
University of Athens Medical School  
Athens  
Greece  
Sjögren's syndrome

**Mila Mituszova, MD**

Consultant Rheumatologist  
National Institute of Rheumatology and Physiotherapy  
Budapest  
Hungary  
History, Epidemiology, and Classification of Crystal-Related Arthropathies



**Professor Girish M. Mody**  
Professor of Rheumatology  
Nelson R. Mandela School of Medicine  
University of KwaZulu Natal  
Congella, Durban  
South Africa  
Acute Rheumatic Fever

**Paul A. Monach, MD, PhD**  
Rheumatology Fellow  
Brigham & Women's Hospital  
Boston, MA  
USA  
Rheumatoid Synovitis and Pannus

**Jorge Morales-Torres, MD**  
Professor of Rheumatology  
Hospital Aranda De La Parra  
Leon  
Mexico  
Antiquity of Rheumatoid Arthritis

**Luc Mouthon, MD**  
Department of Internal Medicine  
Hôpital Cochin  
Université Paris  
Paris  
France  
Churg-Strauss Syndrome

**Haralampos M. Moutsopoulos, MD**  
Department of Pathophysiology  
School of Medicine  
University of Athens  
Athens  
Greece  
Sjögrens Syndrome

**Gregory R Mundy, MD**  
John A. Oates Chair in Translational Medicine  
Director, Vanderbilt Center for Bone Biology  
Professor of Medicine, Pharmacology, Orthopedics,  
Cancer Biology  
Center for Bone Biology  
Vanderbilt University Medical Center  
Nashville, TN  
USA  
Bone Structure and Function

**Stanley J. Naides, MD**  
Thomas B. Hallowell Professor of Medicine  
Professor of Microbiology & Immunology &  
Pharmacology  
Chief, Division of Rheumatology  
Department of Rheumatology  
Penn State Hershey Medical Center  
Hershey, PA  
USA  
Viral Arthritis

**David J. Nashel, MD**  
Professor of Medicine  
George Washington & Georgetown  
University  
VA Medical Center  
Washington, DC  
USA  
Entrapment Neuropathies and Compartment  
Syndromes

**Bernard Nazieres, MD**  
Professor of Rheumatology  
Department of Rheumatology  
Rangueil University Hospital  
Toulouse  
France  
Osteonecrosis

**Rebecca Neame, MD**  
Department of Rheumatology  
King's Mill Hospital, Mansfield Road  
Sutton-in-Ashfield  
UK  
Calcium pyrophosphate dehydrate crystal-associated  
arthropathy

**Philip J. O'Connor, MRCP**  
Consultant Musculoskeletal Radiologist  
Department of Radiology  
Chapel Allerton Hospital  
Leeds  
UK  
Musculoskeletal ultrasound

**Chester V. Oddis, MD**  
Professor of Medicine  
Division of Rheumatology & Clinical Immunology  
University of Pittsburgh School of Medicine  
Pittsburgh, PA  
USA  
Clinical Features, Classification and Epidemiology of  
Inflammatory Disease

**Patrick T. O'Gara, MD**  
Associate Professor of Medicine, Harvard Medical  
School;  
Director, Clinical Cardiology;  
Vice Chairman, Clinical Affairs  
Brigham and Women's Hospital  
Boston, MA  
USA  
The Heart in Rheumatic Disease

**Francesca I. Okoye, MD, PhD**  
Graduate Student  
Department of Surgery  
University of Maryland School of Medicine  
Baltimore, MD  
USA  
Signal transduction

**William E.R. Ollier, PhD**  
Professor of Immunogenetics  
Centre for Integrated Genomic  
Medical Research  
Machester University  
Manchester  
UK  
Genetic Factors in Rheumatic Disease

**K. Sigvard Olsson, MD, PhD**  
Associate Professor  
Section of Hematology and Coagulation  
Sahlgrenska University Hospital  
Gothenburg  
Sweden  
Hemochromatosis

**Philippe Orcel, MD, PhD**  
Professor of Rheumatology  
Federation de Rheumatologie  
Centre Viggo Petersen  
Hôpital Lariboisière  
Paris  
France  
Gaucher's Disease

**John J. O'Shea, MD**  
Chief, Molecular Immunology and Inflammation  
Branch  
National Institute of Arthritis, Musculoskeletal and Skin  
Diseases  
National Institutes of Health

Bethesda, MD  
USA  
Molecular Biology

**Lauren M. Pachman, MD**  
Professor of Paediatrics  
Interim Director, Disease Pathogenesis Program  
The Children's Memorial Research Centre  
Northwestern University, Feinberg School of Medicine  
Chicago, IL  
USA  
Connective Tissue Diseases in Children

**Christian Pagnoux, MD**  
Department of Internal Medicine,  
Hôpital Cochin,  
Université Paris  
Paris  
France  
Churg-Strauss Syndrome

**Amy S. Paller, MD**  
Professor and Chair  
Department of Dermatology  
Children's Memorial Hospital  
Chicago, IL  
USA  
Localized Scleroderma and Idiopathic and  
Environmentally Induced Scleroderma Variants

**Gabriel S. Panayi, ScD, MD**  
ARC Professor of Rheumatology  
Department of Rheumatology  
Guy's, King's and St Thomas' School of Medicine  
King's College, Guy's Hospital  
London  
UK  
Immunotherapies: T Cell, B Cell, Complement

**Carlo Patrono, MD**  
Professor of Pharmacology  
University of Rome "La Sapienza"  
Ospedale Sant' Andrea  
Roma  
Italy  
NSAIDS

**Jeremy David Perry, BSC (accr) MB**  
Consultant Rheumatology  
Department of Rheumatology  
The Royal London Hospital  
Bancroft Road  
London  
UK  
Sports Medicine: The Clinical Spectrum of Injury

**Michelle Petri, MD, MPH**  
Professor of Medicine  
Division of Rheumatology  
Johns Hopkins University School of Medicine  
Baltimore, MD  
USA  
Pregnancy in SLE and Neonatal Lupus

**Ross E. Petty, MD, PhD**  
Professor, Division of Rheumatology  
Department of Pediatrics  
University of British Columbia and British Columbia's  
Children's Hospital  
Vancouver, BC  
Canada  
Classification and Epidemiology of Juvenile Idiopathic  
Arthritis



**Michael H. Pillinger, MD**

Associate Professor of Medicine and Pharmacology  
Departments of Medicine (Rheumatology) and  
Pharmacology and VAMC  
NYU Medical Center  
New York, NY  
USA  
Inflammation

**Carlos Pineda, MD**

Associate Professor of Rheumatology  
Instituto Nacional de Cardiologia  
Tlalpan  
Mexico  
Clubbing and Hypertrophic Osteoarthropathy

**Gyula Poór, MD, PhD, DSc**

Professor of Rheumatology  
Sемmelweis University Medical School, Budapest  
Director General  
National Institute of Rheumatology and Physiotherapy  
Budapest  
Hungary  
History, Epidemiology, and Classification of Crystal-  
Related Arthropathies

**Luminita Pricop, MD**

Associate Scientist  
Hospital for Special Surgery  
New York, NY  
USA  
Immunopathology of Systemic Lupus Erythematosus

**Anne-Marie Prieur, MD**

Médecin des Hôpitaux  
Unité de Rhumatologie Pédiatrique  
Hôpital Necker Enfants-Malades  
Paris  
France  
JIA Management

**Mark A. Quinn, MRCP, MBChB**

Consultant Rheumatologist  
Department of Rheumatology  
York Hospital  
North Yorkshire UK  
Evaluation and Management of Early IA

**Rosalind Ramsey-Goldman, MD, DrPH**

Professor of Medicine  
Northwestern University Feinberg School of Medicine  
Chicago, IL  
USA  
Epidemiology and Classification

**Elaine F. Remmers, PhD**

Staff Scientist  
Genetics and Genomics Branch  
National Institute of Arthritis and Musculoskeletal and  
Skin Diseases  
National Institutes of Health  
Bethesda, MD  
USA  
Molecular Biology

**John Reveille, MD**

Professor of Medicine  
Director of the Division of Rheumatology  
The University of Texas  
Health Science Center  
Houston, TX  
USA  
Clinical Features of Ankylosing Spondylitis

**Christopher Ritchlin, MD**

Associate Professor of Medicine

Director, Clinical Immunology Research Ctr  
Allergy Immunology & Rheumatology Unit  
University of Rochester School of Medicine & Dentistry  
New York, NY  
USA  
Psoriatic Arthritis: Management

**Ronenn Roubenoff, MD, MHS, FACP, FACP**

Senior Director  
Department of Molecular Medicine  
Millennium Pharmaceuticals  
Cambridge, MA, USA;  
Professor (Adjunct)  
Friedman School of Nutrition Science and Policy  
Associate Professor (Adjunct)  
Medical School  
Tufts University  
Boston, MA  
USA  
Nutrition in Rheumatic Disease

**Andrew David Rowan, BSc(Hons), PhD**

Reader in Molecular Rheumatology  
School of Clinical Medical Sciences (Rheumatology)  
The Medical School  
University of New Castle, Framlington Place  
Newcastle-upon-Tyne  
UK  
Tissue Destruction and Repair

**Mishaela R. Rubin, MD**

Assistant Professor of Clinical Medicine  
College of Physicians and Surgeons at Columbia  
University  
New York, NY  
USA  
Hyperparathyroidism

**Violeta Rus, MD**

Assistant Professor of Medicine  
University of Maryland School of Medicine  
Department of Medicine  
Division of Rheumatology and Clinical Immunology  
Baltimore, MD  
USA  
History of Systemic Lupus Erythematosus

**Anthony S. Russell, MD**

Professor Emeritus  
University of Alberta  
Edmonton, AB  
Canada  
Antiquity of spondyloarthropathies

**Kenneth G. Saag, MD, MSc**

Associate Professor of Medicine  
Division of Clinical Immunology and Rheumatology  
University of Alabama at Birmingham Department of  
Medicine  
Birmingham, AL  
USA  
Systemic Corticosteroids in Rheumatology

**Jane E. Salmon, MD**

Professor of Medicine  
Hospital for Special Surgery  
New York, NY  
USA  
Immunopathology of Systemic Lupus Erythematosus

**David C. Salonen, BSc, MD, FRCP**

Assistant Professor of Medical Imaging and  
Orthopedics  
Department of Medical Imaging  
Toronto Western Hospital  
Toronto, Ontario

Canada

Seronegative Spondyloarthropathies: Imaging

**Daniel J. Salzman, MD**

Assistant Professor of Medicine  
Director, Nephrology Fellowship Training Program  
University of Maryland Medical Center  
Baltimore, MD  
USA  
The kidney and rheumatic disease

**Philip SamBrook, MD**

Professor of Rheumatology  
Department of Rheumatology  
Royal North Shore Hospital  
Sydney  
Australia  
Glucocorticoid-Induced Osteoporosis

**Tore Saxne, MD, PhD**

Professor of Rheumatology  
Department of Rheumatology  
Lund University Hospital  
Lund  
Sweden  
Articular Cartilage

**Lisabeth V. Scalzi, MD**

Associate Professor  
Pennsylvania State University  
Milton S. Hershey Medical Center  
Children's Hospital  
Hershey, PA  
USA  
History of Pediatric Rheumatology

**Hans-Georg Schaible, MD**

Professor  
Institute of Physiology/Neurophysiology  
Friedrich Schiller University of Jena  
Jena  
Germany  
Scientific Basis of Pain

**Ralph Schumacher, MD**

Professor of Medicine  
University of Pennsylvania  
VA Medical Center  
Philadelphia, PA  
USA  
Miscellaneous Arthropathies Including Synovial Tumors  
and Foreign Body Synovitis

**David G.I. Scott, MBChB, MD**

Consultant Rheumatologist and Honorary Professor  
Department of Rheumatology  
Norfolk & Norwich University Hospital  
Norwich  
UK  
Polyarteritis Nodosa and Microscopic Polyangiitis

**Brooke Seidelmann**

Administrative Assistant  
Center for Integrative Medicine  
University of Maryland School of Medicine  
Baltimore, MD  
USA  
Complementary and Alternative Medicine

**Peter L. Selby, MD**

Consultant Physician and Honorary Senior Lecturer  
University of Manchester Department of Medicine  
Manchester Royal Infirmary  
Manchester  
UK  
Rickets and Osteomalacia



**Guy Serre, MD, PhD**  
Professor of Cell Biology  
University Toulouse III  
Hopital Pupan  
Toulouse  
France  
Autoantibodies in RA

**Margaret Seton, MD**  
Assistant Professor of Medicine  
Arthritis Unit  
Massachusetts General Hospital  
Boston, MA  
USA  
Paget's Disease of the Bone

**Nancy A. Shadick, MD, MPH**  
Assistant Professor of Medicine  
Division of Rheumatology  
Brigham & Women's Hospital  
Boston, MA  
USA  
Lyme Disease

**Frederic Shapiro, MD**  
Associate Professor of Orthopedic Surgery  
Harvard Medical School  
Children's Hospital Boston  
Boston, MA  
USA  
Metabolic, drug-induced, and other non-inflammatory myopathies

**Prodromos I. Sidiropoulos, MD**  
Lecturer, Department of Rheumatology  
University of Crete Medical School  
Heraklion  
Greece  
Treatment-Renal Involvement

**Richard M. Siegel, MD**  
Autoimmunity Branch  
National Institute of Arthritis, Musculoskeletal and Skin Diseases  
National Institutes of Health  
Bethesda, MD  
USA  
Principles and techniques in molecular biology

**Joachim Sieper, MD, PhD**  
Professor of Internal Medicine and Rheumatology  
Medical Department I Rheumatology  
Charite University Medicine Berlin  
Campus Benjamin Franklin  
Berlin  
Germany  
Management of Ankylosing Spondylitis

**Alan J. Silman, MSC, MD**  
Medical Director, Arthritis Research Campaign  
Chesterfield;  
Professor Rheumatic Diseases Epidemiology  
University of Manchester  
Manchester  
UK  
Classification and epidemiology

**Richard M. Silver, MD**  
Professor of Medicine and Pediatrics  
Director, Division of Rheumatology  
Medical University of South Carolina  
Charleston, SC  
USA  
Clinical Features of Systemic Sclerosis

**Shonni J. Silverberg, MD**  
Professor of Clinical Medicine  
Columbia University  
New York, NY  
USA  
Hyperparathyroidism

**Peter A Simkin, MD**  
Adjunct Professor of Orthopaedics  
Division of Rheumatology  
University of Washington  
Seattle, WA  
USA  
The Musculoskeletal System and Joint Physiology

**Barry P. Simmons, MD**  
Professor of Orthopedic Surgery  
Department of Orthopedic Surgery  
Brigham and Women's Hospital  
Harvard Medical School  
Boston, MA  
USA  
The wrist and hand

**Nora G. Singer, MD**  
Assistant Professor  
Division of Pediatric Disease and Rheumatology and  
the Division of Rheumatic Disease  
CASE School of Medicine  
Rainbow Babies & Children's Hospital & University  
Hospitals  
Cleveland, OH  
USA  
History of Pediatric Rheumatology

**Edwin A. Smith, MD**  
Professor of Medicine  
Division of Rheumatology and Immunology  
Medical University of South Carolina  
Charleston, SC  
USA  
Systemic sclerosis: etiology and pathogenesis

**Malcom Douglas Smith, MBBS, PhD, BSc**  
Professor in Medicine  
Rheumatology Unit  
Repatriation General Hospital  
Daw Park, South Australia  
Australia  
The Synovium

**Stacy E. Smith, MD**  
Assistant Professor of Radiology  
Division of Musculoskeletal Imaging  
Department of Diagnostic Imaging  
University of Maryland School of Medicine  
Baltimore, MD  
USA  
Conventional Radiography and CT

**Taunton R. Southwood, MD**  
Professor of Paediatric Rheumatology  
Institute of Child Health  
Birmingham Children's Hospital  
Birmingham  
UK  
Evaluation of musculoskeletal and rheumatic disorders in children

**Tim D. Spector, MD, MSC**  
Director  
Twin Research Unit  
St. Thomas Hospital  
Lambeth Palace Road  
London  
UK  
Genetics of Osteoarthritis

**E. William St. Clair, MD**  
Professor of Rheumatology and Immunology  
Duke University Medical Center  
Durham, NC  
USA  
Cogan's syndrome

**Virginia Steen, MD**  
Professor of Medicine  
Georgetown University  
Washington, DC  
USA  
Epidemiology and Classification of Scleroderma

**Gunter Steiner, PhD**  
Professor of Biochemistry  
Division of Rheumatology  
Department of Internal Medicine  
Medical University of Vienna  
Vienna  
Austria  
Autoantibodies in RA

**John H. Stone, MD, MPH**  
Associate Professor of Medicine  
Division of Rheumatology  
Director, The John Hopkins Vasculitis Ctr  
Baltimore, MD  
USA  
Wegener's Granulomatosis and Lymphomatoid Granulomatosis

**Millicent A. Stone, MD**  
Consultant Rheumatologist  
Royal National Hospital for Rheumatic Diseases  
Bath  
UK  
Reactive arthritis: etiology and pathogenesis

**Gerold Stucki, MD, MS**  
Professor  
Department of Physical Medicine  
University Hospital Munich  
Munich  
Germany  
Principles of Rehabilitation

**Roger D. Sturrock, MD**  
Professor of Rheumatology  
Centre for Rheumatic Diseases  
Medicine- Division of Immunology, Infection & Inflammation  
Royal Infirmary,  
Glasgow  
Disease-Modifying Antirheumatic Drugs 1:  
Antimalarials and Gold

**Deborah P.M. Symmons, MD, MFPH**  
Professor  
ARC Epidemiology Unit  
University of Manchester  
Epidemiologic Concepts and Classification of Rheumatology  
Manchester  
UK  
Epidemiologic Concepts and Classification of Rheumatology

**Zoltan Szekanecz, MD**  
Division Chief  
Rheumatology Division  
Third Department of Medicine  
The University of Debrecen Medical and Health Sciences Center  
Debrecen  
Hungary  
Angiogenesis in RA

**Ilona Szer, MD**

Director  
Pediatric Rheumatology Division  
Children's Hospital San Diego  
San Diego, CA  
USA  
Henoch-Shönlein Purpura

**Paul-Peter Tak, MD, PhD**

Department of Clinical Immunology and Rheumatology  
University of Amsterdam  
Academic Medical Center  
Amsterdam  
The Netherlands  
Minimally Invasive Procedures

**Antonio Tavoni, MD**

Rheumatologist  
Department of Internal Medicine  
University of Pisa  
Pisa  
Italy

**Mohamed M. Thabet, MD**

Department of Internal Medicine  
Assiut University Hospital  
Assiut  
Egypt  
Other drugs in rheumatic disease

**Jennifer E. Thorne, MD**

Assistant Professor of Ophthalmology  
Division of Ocular Immunology  
Wilmer Eye Institute  
Baltimore, MD  
USA  
The Eye and Rheumatic Disease

**Auli Toivanen, MD, Dr Med Sc**

Professor of Medicine (Emerita)  
Department of Medicine  
Turku University  
Turku  
Finland  
Reactive arthritis: Clinical features and treatment

**Carl Turesson, MD, PhD**

Fellow in Rheumatology  
Department of Rheumatology  
Malmo University Hospital  
Sweden  
Extraarticular Features of Rheumatoid Arthritis and Systemic Involvement

**Athanasios G. Tzioufas, MD**

Assistant Professor and Consultant Rheumatologist  
Department of Pathophysiology  
School of Medicine  
University of Athens  
Panepistimiopolis  
Goudi Area  
Greece  
Sjögrens Syndrome

**Murray B. Urowitz, MD**

Professor of Medicine, University of Toronto  
Director, Centre for Prognosis Studies in the Rheumatic Diseases and University of Toronto Lupus Clinic  
Toronto Western Hospital  
Toronto, ON  
Canada  
SLE-Clinical Features

**Wim B. van den Berg, PhD**

Professor of Experimental Rheumatology  
Rheumatology Research and Adv Ther.  
University Medical Center Nijmegen  
Geert Grooteplein  
Nijmegen  
The Netherlands  
Animal Models of RA

**Desiré van der Heijde, MD**

Professor of Rheumatology  
University Hospital Maastricht  
Maastricht  
The Netherlands  
Classification and Epidemiology of Spondylitis

**Sjef van der Linden, MD, PhD**

Professor of Rheumatology  
Department of Internal Medicine  
Division of Rheumatology  
University Hospital of Maastricht  
Maastricht  
The Netherlands  
Classification and epidemiology of spondyloarthritis

**Piet LCM van Riel, MD**

Professor of Rheumatology  
Radboud University Nijmegen Medical Center  
Rheumatology  
Nijmegen  
The Netherlands  
Evaluation and Outcome of the Patient with Established RA

**John Varga, MD**

Professor of Medicine  
Division of Rheumatology  
Northwestern University  
Feinberg School of Medicine  
Chicago, IL  
USA  
Localized Forms of Scleroderma

**Dimitrios Vassilopoulos, MD**

Assistant Professor of Medicine – Rheumatology  
Athens University School of Medicine  
Hippokraton General Hospital  
Athens  
Greece  
Rheumatic Aspects of HIV Infection and other Immunodeficient States

**Patrick Venables, MD**

Professor  
Kennedy Institute of Rheumatology  
Faculty of Medicine  
London  
UK  
Please Insert Chapter Title Here.

**Eric M. Veys, MD**

Professor of Rheumatology  
Department of Rheumatology  
University Hospital  
Gent  
Belgium  
Overlap Syndromes  
Gastrointestinal tract and rheumatic disease

**Richard J. Wakefield, BM**

Senior Lecturer and Honorary Consultant in Rheumatology  
Academic Department of Musculoskeletal Medicine  
Leeds General Infirmary  
Leeds

UK

Ultrasound

**Jennifer G. Walker, MBBS, FRACP**

Rheumatologist  
Department of Rheumatology  
Repatriation General Hospital  
Daw Park, South Australia  
Australia  
Synovium

**Richard Watts, MA, DM**

Consultant Rheumatologist, Department of Rheumatology Ipswich Hospital  
Honorary Senior Lecturer, School of Medicine, Health Policy and Practice  
University of East Anglia  
Ipswich  
UK  
Polyarteritis nodosa and microscopic polyangiitis

**Matthew R. Weir, MD**

Professor and Director  
Division of Nephrology  
University of Maryland School of Medicine  
Baltimore, MD  
USA  
The Kidney and Rheumatic Disease

**Athol U. Wells, MBChB, MD**

Professor of Respiratory Medicine  
Royal Brompton Hospital  
London  
UK  
The Lung in Rheumatic Disease

**Paco Welsing, MSC**

Epidermiologist  
University Medical Centre Nijmegen  
Nijmegen  
The Netherlands  
Evaluation and Outcome of the Patient with Established RA

**Sterling Gaylord West, MD**

Professor of Medicine  
Division of Rheumatology  
Department of Medicine  
University of Colorado Health Science Center  
Denver, CO  
USA  
Sarcoidosis

**Cornelia Weyand, MD, PhD**

Director, Lowance Center of Human Immunology  
Emory University School of Medicine  
Atlanta, GA  
USA  
Polymyalgia Rheumatica and Giant Cell Arteritis

**Allan Sture Wiik, MD, PhD**

Consultant  
Department of Autoimmunology  
Statens Serum Institut  
Copenhagen  
Denmark  
Laboratory Tests in Rheumatic Disorders

**Frances M.K. Williams, MD**

Twin Research and Genetic Epidemiology Unit  
St. Thomas' Hospital  
London  
UK  
The genetics of osteoarthritis



**H. James Williams, MD**  
 Thomas E. and Rebecca D. Jeremy  
 Presidential Endowed Chair for Arthritis Research  
 Division of Rheumatology  
 University of Utah School of Medicine and Health  
 Sciences Center  
 Salt Lake City, UT  
 USA  
 Disease-modifying antirheumatic drugs 3:  
 methotrexate

**Frank A. Wollheim, MD, PhD**  
 Professor of Rheumatology  
 Department of Rheumatology  
 Lund University Hospital  
 Lund  
 Sweden  
 Osteoarthritis: Pathology and Pathogenesis

**Anthony D. Woolf, BSc, MBBS**  
 Professor of Rheumatology  
 Peninsula Medical School  
 Universities of Exeter and Plymouth;  
 Consultant Rheumatologist  
 Duke of Cornwall Department of Rheumatology  
 Royal Cornwall Hospital  
 Truro  
 UK  
 History and Physical Examination

**Jane Worthington, MD**  
 Reader in Molecular Genetics  
 ARC Epidemiology Unit  
 University of Manchester  
 Manchester  
 England

UK  
 Genetic Factors in Rheumatic Disease

**Howard B. Yeon, MD**  
 Department of Orthopedic Surgery  
 Children's Hospital;  
 Department of Orthopedic Surgery  
 Brigham and Women's Hospital;  
 Harvard Medical School  
 Boston, MA  
 USA  
 The knee

**John Wright, MD**  
 Orthopedic Surgeon  
 Department of Orthopedic Surgery  
 Brigham & Women's Hospital  
 Boston, MA  
 USA  
 The knee

**Hasan Yazici, MD**  
 Professor of Medicine  
 Chief, Department of Medicine and Division of  
 Rheumatology  
 Cerrahpasa Medical Faculty  
 University of Istanbul  
 Istanbul  
 Turkey  
 Behçet's Syndrome

**Edward H. Yelin, PhD**  
 Professor of Medicine and Health Policy  
 Rosalind Russell Medical Research Center for Arthritis  
 San Francisco, CA  
 USA

The Worldwide Economic and Functional Impact of  
 Rheumatic Disease

**John Robert York, MD**  
 Clinical Associate Professor  
 Department of Rheumatology  
 Institute of Rheumatology and Orthopaedics  
 The Royal Prince Alfred Hospital  
 Camperdown, NSW  
 Australia  
 Australia  
 Hemophilia

**Sebahattin Yurdakul, MD**  
 Professor of Medicine  
 Department of Rheumatology Cerrahpasa Medical  
 Faculty  
 University of Istanbul  
 Istanbul  
 Turkey  
 Behçet's Syndrome

**Guangju Zhai, MD**  
 Genetic Epidemiologist  
 Twin Research and Genetic Epidemiology Unit  
 St Thomas' Hospital  
 London  
 UK  
 The genetics of osteoarthritis