

JEAN-LOUIS VINCENT

EDWARD ABRAHAM

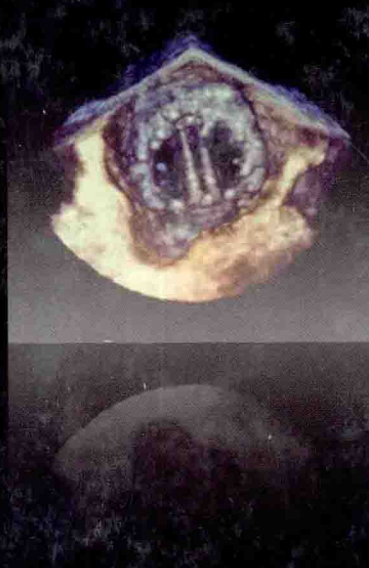
FREDERICK A. MOORE

PATRICK M. KOCHANEK

MITCHELL P. FINK

TEXTBOOK OF
CRITICAL CARE

SIXTH EDITION

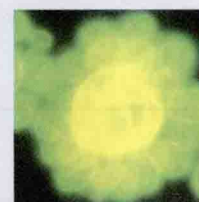


TEXTBOOK OF CRITICAL CARE

Sixth Edition

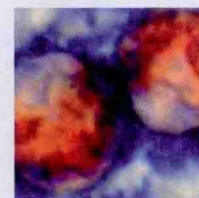
JEAN-LOUIS VINCENT, MD, PhD

Professor of Intensive Care Medicine
Université Libre de Bruxelles
Head, Department of Intensive Care
Erasmus University Hospital
Brussels, Belgium



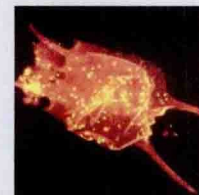
EDWARD ABRAHAM, MD

Professor and Chair
Spencer Chair in Medical Science Leadership
Department of Medicine
University of Alabama at Birmingham
School of Medicine
Birmingham, Alabama



FREDERICK A. MOORE, MD, FACS, FCCM

Professor of Surgery
Head, Acute Care Surgery
College of Medicine
University of Florida
Gainesville, Florida



PATRICK M. KOCHANEK, MD, FCCM

Professor and Vice Chairman
Department of Critical Care Medicine
Professor of Anesthesiology, Pediatrics, and Clinical and Translational Science
Director, Safar Center for Resuscitation Research
University of Pittsburgh School of Medicine
Pittsburgh, Pennsylvania

MITCHELL P. FINK, MD

Professor of Surgery and Anesthesiology
Vice Chair for Critical Care, Department of Surgery
David Geffen School of Medicine
University of California–Los Angeles
Los Angeles, California

No part of this publication may be reproduced or transmitted in any form or by any means, electronic or mechanical, including photocopying, recording, or any information storage and retrieval system, without permission in writing from the publisher. Details on how to seek permission, further information about the Publisher's permissions policies and our arrangements with organizations such as the Copyright Clearance Center and the Copyright Licensing Agency, can be found at our website: www.elsevier.com/permissions.

This book and the individual contributions contained in it are protected under copyright by the Publisher (other than as may be noted herein).

Notices

Knowledge and best practice in this field are constantly changing. As new research and experience broaden our understanding, changes in research methods, professional practices, or medical treatment may become necessary.

Practitioners and researchers must always rely on their own experience and knowledge in evaluating and using any information, methods, compounds, or experiments described herein. In using such information or methods they should be mindful of their own safety and the safety of others, including parties for whom they have a professional responsibility.

With respect to any drug or pharmaceutical products identified, readers are advised to check the most current information provided (i) on procedures featured or (ii) by the manufacturer of each product to be administered, to verify the recommended dose or formula, the method and duration of administration, and contraindications. It is the responsibility of practitioners, relying on their own experience and knowledge of their patients, to make diagnoses, to determine dosages and the best treatment for each individual patient, and to take all appropriate safety precautions.

To the fullest extent of the law, neither the Publisher nor the authors, contributors, or editors assume any liability for any injury and/or damage to persons or property as a matter of products liability, negligence or otherwise, or from any use or operation of any methods, products, instructions, or ideas contained in the material herein.

Library of Congress Cataloging-in-Publication Data

Textbook of critical care.—6th ed. / [edited by] Jean-Louis Vincent ... [et al.].
p. ; cm.

Includes bibliographical references and index.

ISBN 978-1-4377-1367-1 (hardcover : alk. paper) 1. Critical care medicine. I. Vincent, J. L.

[DNLM: 1. Critical Care. 2. Intensive Care Unites. WX 218]

RC86.7.1453 2011

616'.028—dc22

2011010767

Executive Publisher: Natasha Andjelkovic
Developmental Editor: Julia Bartz
Publishing Services Manager: Anne Altepeter
Project Manager: Cindy Thoms
Design Direction: Ellen Zanolle

TEXTBOOK OF CRITICAL CARE

To Hac and Amélie, hoping for better care of the critically ill throughout the world
— JEAN-LOUIS VINCENT

To Norma-May, my true love. To Claire and Erin, who bring me the greatest joy, and to my mother, Dale Abraham, for her support throughout my life
— EDWARD ABRAHAM

To my father, Ernest E. Moore, who was a family practitioner for 50 years in Butler, Pennsylvania. He inspired me by his dedication to self education, humility, and service to his community
— FREDERICK A. MOORE

To my parents, Stella and Julius Kochanek, for leading by example on the value of hard work; to my wife, Denise, and my children, Ashley, Stanton, and Jillian, for their many sacrifices; and to the late Dr. Peter Safar, for encouraging each of us to bring promising new therapies to the bedside of the critically ill
— PATRICK M. KOCHANEK

To my two grown-up children, Emily and Matthew; may their lives be as professionally rewarding and personally satisfying as mine has been. To the memory of my parents, Walter and Betty, who taught me the virtues of honesty and hard work. And to Judy Rochlin, who I loved 40 years ago, and love again even more now
— MITCHELL P. FINK

CONTRIBUTORS

Edward Abraham, MD

Professor and Chair
Spencer Chair in Medical Science Leadership
Department of Medicine
University of Alabama at Birmingham
School of Medicine
Birmingham, Alabama

Peter Abrams, MD

Fellow in Abdominal Transplantation
Thomas E. Starzl Transplantation Institute
Department of Surgery
University of Pittsburgh School of Medicine
Pittsburgh, Pennsylvania

Kareem Abu-Elmagd, MD

Professor of Surgery
Director of Intestinal Rehabilitation and Transplant Center
Thomas E. Starzl Transplantation Institute
Department of Surgery
University of Pittsburgh School of Medicine
Pittsburgh, Pennsylvania

Yasir Abu-Omar, MBChB, DPhil, FRCS(C-Th)

Department of Cardiothoracic Surgery
Papworth Hospital
Cambridge, United Kingdom

Carlos Agusti, MD, PhD

Pneumology Department
Clinic Institute of Thorax (ICT)
Hospital Clinic of Barcelona-Institut d'Investigacions Biomèdiques
August Pi i Sunyer
University of Barcelona-Ciber de Enfermedades
Barcelona, Spain

William C. Aird, MD

Department of Medicine
Beth Israel Deaconess Medical Center and Harvard Medical School
Boston, Massachusetts

Philip Alapat, MD, DABSM, FCCP

Assistant Professor
Department of Pulmonary, Critical Care, and Sleep Medicine
Baylor College of Medicine
Ben Taub General Hospital
Houston, Texas

Ali H. Al-Khafaji, MD, MPH

Associate Professor and Consultant
Director
Transplant Intensive Care Unit
Department of Critical Care Medicine
University of Pittsburgh School of Medicine
Pittsburgh, Pennsylvania

Gustavo G. Angaramo, MD

Assistant Professor in Anesthesiology and Critical Care Medicine
Department of Anesthesiology
Former Instructor in Cardiothoracic Surgery
Department of Surgery
University of Massachusetts Medical School
Worcester, Massachusetts

Derek C. Angus, MD, MPH, FRCP

Chair, Department of Critical Care Medicine
The Mitchell P. Fink Endowed Chair in Critical Care Medicine
Professor of Critical Care Medicine, Medicine, Health Policy and
Management, and Clinical and Translational Science
University of Pittsburgh School of Medicine and Graduate School
of Public Health
Pittsburgh, Pennsylvania

Anastasia Antoniadou, MD, PhD

Assistant Professor of Internal Medicine and Infectious Diseases
Athens University Medical School
University General Hospital ATTIKON
Athens, Greece

Anupam Anupam, MBBS

Attending Physician, Department of Medicine
Advocate Illinois Masonic Medical Center
Chicago, Illinois

**Andrew C. Argent, MBBCh (Wits), MMed (Paeds)(Wits),
DCH (SA), FCPaeds (SA), FRCPCH(UK)**

Professor, School of Child and Adolescent Health
University of Cape Town
Medical Director
Paediatric Intensive Care
Red Cross War Memorial Children's Hospital
Cape Town, Western Cape, South Africa

John H. Arnold, MD

Senior Associate
Department of Anesthesia
Medical Director of ECMO, Respiratory Care, and
Biomedical Engineering
Children's Hospital Boston
Associate Professor of Anaesthesia and Pediatrics
Harvard Medical School
Boston, Massachusetts

Anna Arroyo, MD

Department of Medicine
Division of Hospital Medicine
Washington University School of Medicine
St Louis, Missouri

Stephen Ashwal, MD

Distinguished Professor of Pediatrics and Chief of the Division
of Child Neurology
Department of Pediatrics
Loma Linda University School of Medicine
Loma Linda, California

Mark E. Astiz, MD

Chief, Division of Critical Care Medicine
 Lenox Hill Hospital
 New York, New York
 Professor of Medicine
 New York Medical College
 Westchester County, New York

Elie Azoulay, MD, PhD

AP-HP, Hôpital Saint-Louis
 Université Paris-7 Paris-Diderot
 UFR de Médecine
 Réanimation Médicale
 Paris, France

Omer A. Bajwa, MD

Senior Fellow, Department of Critical Care Medicine
 University of Pittsburgh
 Allegheny General Hospital
 Pittsburgh, Pennsylvania

Anthony Baldea, MD

Chief Resident
 Department of Surgery
 Loyola University Medical Center
 Maywood, Illinois

Marie R. Baldisseri, MD, FCCM

Associate Professor of Critical Care Medicine
 University of Pittsburgh Medical Center
 Pittsburgh, Pennsylvania

Zsolt J. Balogh, MD, PhD, FRACS

Professor of Traumatology
 Department of Traumatology
 University of Newcastle
 John Hunter Hospital
 Newcastle, New South Wales, Australia

Rasheed Abiodun Balogun, MD

Associate Professor of Medicine
 Division of Nephrology
 Medical Director, Renal Unit and Extracorporeal Therapies
 University of Virginia Health System
 Charlottesville, Virginia

Arna Banerjee, MD

Assistant Professor of Anesthesiology
 Assistant Professor of Surgery
 Vanderbilt University School of Medicine
 Nashville, Tennessee

Philip S. Barie, MD, MBA, FIDSA, FCCM, FACS

Professor of Surgery and Public Health
 Weill Cornell Medical College
 Chief, Preston A. Wade Acute Care Surgery Service
 New York-Presbyterian Hospital/Weill Cornell Medical Center
 New York, New York

Brendan Barrett, MB, MSc

Professor of Medicine
 Division of Nephrology
 Memorial University of Newfoundland
 St. John's, Newfoundland, Canada

Robert Bartlett, MD

Professor of Surgery, Emeritus
 University of Michigan
 Ann Arbor, Michigan

John G. Bartlett, MD

Professor of Medicine
 Division of Infectious Diseases
 Johns Hopkins University School of Medicine
 Baltimore, Maryland

Gianluigi Li Bassi, MD

Researcher
 Respiratory Intensive Care Unit
 Institut Clinic del Tòrax
 Hospital Clinic of Barcelona
 Institut d'investigacions Biomèdiques
 August Pi i Sunyer
 Centro de Investigación Biomédica en
 Red Enfermedades Respiratorias
 Barcelona, Spain

Sarice L. Bassin, MD

Assistant Professor
 Department of Neurology
 Northwestern Memorial Hospital
 Chicago, Illinois

Julie A. Bastarache, MD

Assistant Professor of Medicine
 Division of Allergy, Pulmonary, and Critical Care Medicine
 Department of Medicine
 Vanderbilt University
 Nashville, Tennessee

Colin Bauer, MD

Resident
 Department of Anesthesiology
 University of California–Los Angeles
 Los Angeles, California

Daniel G. Bausch, MD, MPH&TM

Associate Professor
 Department of Tropical Medicine and Section of
 Adult Infectious Diseases
 Tulane University Health Science Center
 New Orleans, Louisiana

Hülya Bayır, MD

Associate Professor
 Department of Critical Care Medicine
 Department of Environmental and Occupational Health
 Director, Pediatric Critical Care Medicine Research
 Associate Director
 Center for Free Radical and Antioxidant Health
 Safar Center for Resuscitation Research
 Pittsburgh, Pennsylvania

David T. Bearden, PharmD

Clinical Associate Professor
 Department of Pharmacy Practice
 Oregon State University
 Portland, Oregon

Gregory J. Beilman, MD

Professor and Vice Chair of Surgery
Chief of Critical Care/Acute Care Surgery
University of Minnesota
Minneapolis, Minnesota

Rinaldo Bellomo

Department of Intensive Care
Austin Hospital and University of Melbourne
Melbourne, Australia

E. David Bennett, MB, FRCP

Visiting Professor of Intensive Care
Kings College
Honorary Consultant Physician
Intensive Care Unit
St. Thomas' Hospital
London, United Kingdom

Gordon R. Bernard, MD

Professor of Medicine
Associate Vice Chancellor for Research
Vanderbilt University School of Medicine
Nashville, Tennessee

Jay K. Bhama, MD

Division of Cardiothoracic Surgery
University of Pittsburgh School of Medicine
Pittsburgh, Pennsylvania

Joost J.L.M. Bierens, MD

Anesthesiologist
Medical Commission International Life Saving Federation
Advising Governer Maatschappij tot Redding van Drenkelingen
The Netherlands

Walter L. Biffl, MD

Director of Surgery/Trauma Outreach
Assistant Director of Patient Safety and Quality
Denver Health Medical Center
Professor of Surgery
Associate Residency Program Director
University of Colorado
Denver, Colorado

Thomas P. Bleck, MD, FCCM

Professor of Neurological Sciences, Neurosurgery, Medicine,
and Anesthesiology
Assistant Dean
Rush Medical College
Associate Chief Medical Officer for Critical Care
Rush University Medical Center
Chicago, Illinois

Thomas A. Bledsoe, MD

Clinical Assistant Professor
Brown University School of Medicine
Providence, Rhode Island

Karen C. Bloch, MD, MPH

Assistant Professor
Departments of Medicine (Infectious Diseases) and
Preventive Medicine
Vanderbilt University Medical Center
Nashville, Tennessee

Frank Bloos, MD, PhD

Department of Anesthesiology and Intensive Care Medicine
Jena University Hospital
Jena, Germany

Desmond Bohn, MB, FRCP

Chief
Department of Critical Care Medicine
The Hospital for Sick Children
Professor
Anesthesia and Pediatrics
University of Toronto
Toronto, Ontario, Canada

Nicole C. Bouchard, MD, FPCPC

Assistant Clinical Professor
Assistant Site Director
Director of Medical Toxicology
Emergency Medicine
New York-Presbyterian/Columbia University Medical Center
New York, New York

Arthur J. Boujoukos, MD

Professor, Department of Critical Care Medicine
University of Pittsburgh School of Medicine
Medical Director, Cardiothoracic Intensive Care Unit
University of Pittsburgh Medical Center
Pittsburgh, Pennsylvania

William J. Brady, MD

Professor
Department of Emergency Medicine and Medicine
University of Virginia
Operational Medical Director
Charlottesville-Albemarle Rescue and Albemarle County Fire-Rescue
Chair, Resuscitation Committee
University of Virginia
Charlottesville, Virginia

Serge Brimioulle, MD, PhD

Professor
Department of Intensive Care
Erasmie Hospital
Free University of Brussels
Brussels, Belgium

Daniel E. Brooks, MD

Co-Medical Director
Banner Good Samaritan Poison and Drug Information Center
Department of Medical Toxicology
Banner Good Samaritan Medical Center
Phoenix, Arizona

Richard C. Brundage, PharmD, PhD

Distinguished University Teaching Professor
Experimental and Clinical Pharmacology
University of Minnesota
Minneapolis, Minnesota

Jeffrey P. Burns, MD, MPH

Chief
Division of Critical Care Medicine
Children's Hospital Boston
Associate Professor of Anaesthesia
Harvard Medical School
Boston, Massachusetts

Belén Cabello, MD

Unidad de Cuidados Intensivos
Hospital de Antequera
Antequera, Spain

Karen H. Calhoun, MD, FACS, FAAOA

Professor
Department of Otolaryngology, Head and Neck Surgery
The Ohio State University Medical Center
Columbus, Ohio

Clifton W. Callaway, MD, PhD

Associate Professor
Department of Emergency Medicine
Safar Center for Resuscitation Research
University of Pittsburgh
Pittsburgh, Pennsylvania

Peter M.A. Calverley, MBChB

Professor of Respiratory Medicine
School of Clinical Sciences
University of Liverpool
Liverpool, United Kingdom

John Camm, MD

Professor of Clinical Cardiology
St. George's University of London
Honorary Consultant Cardiologist
St. George's Healthcare Trust
London, United Kingdom

Diane M. Cappelletty, PharmD

Associate Professor
Pharmacy Practice
The University of Toledo
Toledo, Ohio

Joseph A. Carcillo, MD

Associate Professor of Critical Care Medicine and Pediatrics
Children's Hospital of Pittsburgh of UPMC
University of Pittsburgh School of Medicine
Pittsburgh, Pennsylvania

Anthony J. Carlese, DO, FCCP

Division of Critical Care Medicine
Montefiore Medical Center and the Albert Einstein College
of Medicine
Bronx, New York

Juan Carlos-Puyana, MD

Department of Surgery
University of Pittsburgh
Pittsburgh, Pennsylvania

Franco A. Carnevale, RN, PhD

Associate Professor
School of Nursing
McGill University
Associate Member
Pediatric Critical Care
Montreal Children's Hospital
Montreal, Quebec, Canada

Edward D. Chan, MD

Associate Professor of Medicine
National Jewish Health
Staff Physician
Denver Veterans Affairs Medical Center
Denver, Colorado
Staff Physician
University of Colorado Denver
Anschutz Medical Center
Aurora, Colorado

Sanjay Chawla, MD, FCCP

Assistant Professor of Medicine
Weill Cornell Medical College
Assistant Attending Physician
Critical Care Medicine Service
Department of Anesthesiology and Critical Care Medicine
Memorial Sloan-Kettering Cancer Center
New York, New York

Lakshmipathi Chelluri, MD

Associate Professor
Departments of Critical Care Medicine and Medicine
University of Pittsburgh Medical Center
Pittsburgh, Pennsylvania

David C. Chen, MD

Assistant Clinical Professor
Department of Surgery
University of California–Los Angeles
Los Angeles, California

Annie S. Chevrier, RN, MScA

Clinical Nurse Specialist
Internal Medicine, Medical Mission
McGill University Health Centre
Montreal, Quebec, Canada

Su Min Cho, MD, MRCP(UK)

Division of Gastroenterology, Hepatology, and Nutrition
University of Pittsburgh School of Medicine
Pittsburgh, Pennsylvania

Robert S.B. Clark, MD

Professor and Chief, Division of Pediatric Critical Care Medicine
Children's Hospital of Pittsburgh of UPMC
Associate Director
Safar Center for Resuscitation Research
University of Pittsburgh
Pittsburgh, Pennsylvania

Michael A. Coady, MD

Attending Cardiac Surgeon
Heart and Vascular Institute
Stamford Hospital
Stamford, Connecticut

Stephen M. Cohn, MD, FACS

Witten B. Russ Professor of Surgery
University of Texas Health Science Center
San Antonio, Texas

Alan D. Cook, MD

Trauma Surgeon
Trauma Services
East Texas Medical Center
Tyler, Texas

Deborah J. Cook, MD, FRCPC, MSc(Epi)

Professor
Department of Medicine, Clinical Epidemiology, and Biostatistics
Academic Chair, Critical Care Medicine
McMaster University
Hamilton, Ontario, Canada

Robert N. Cooney, MD, FACS, FCCM

Professor of Surgery
Department of Surgery
SUNY Upstate Medical University
Syracuse, New York

Susan J. Corbridge, PhD, ACNP, AE-C, FAANP

Clinical Assistant Professor of Nursing
Clinical Assistant Professor of Medicine
Coordinator, Acute Care Nurse Practitioner Program
University of Illinois at Chicago
Chicago, Illinois

Thomas C. Corbridge, MD, FCCP

Professor of Medicine
Professor of Physical Medicine and Rehabilitation
Department of Medicine
Northwestern University Feinberg School of Medicine
Chicago, Illinois

Howard L. Corwin, MD

Professor of Medicine and Anesthesiology
Dartmouth Medical School
Hanover, New Hampshire

Mark A. Crowther, MD, MSc, FRCPC

Professor
Department of Medicine
McMaster University
St. Joseph's Hospital
Hamilton, Ontario, Canada

Burke A. Cunha, MD, MACP

Chief, Infectious Disease Division
Winthrop-University Hospital
Mineola, New York
Professor of Medicine
State University of New York School of Medicine
Stony Brook, New York

Cheston B. Cunha, MD

Department of Medicine
Brown University Alpert School of Medicine
Rhode Island Hospital and The Miriam Hospital
Providence, Rhode Island

J. Randall Curtis, MD, MPH

Professor of Medicine
Section Head, Pulmonary and Critical Care Medicine
Harborview Medical Center
University of Washington
Seattle, Washington

Vincenzo D'Intini, MD

Renal Medicine
Royal Brisbane and Women's Hospital
Brisbane, Queensland, Australia

Pirouz Daeihagh, MD

Associate Professor of Internal Medicine-Nephrology
Wake Forest University Baptist
Winston Salem, North Carolina

Joseph M. Darby, MD

Professor of Critical Care Medicine and Surgery
University of Pittsburgh School of Medicine
Medical Director, Trauma ICU
UPMC-Presbyterian Hospital
Pittsburgh, Pennsylvania

James M. Dargin, MD

Fellow
Critical Care Medicine
University of Pittsburgh Medical Center
Pittsburgh, Pennsylvania

Michaël Darmon, MD, PhD

Attending Physician
Medical-Surgical ICU
Saint-Etienne University Hospital
Jean Monnet University
Saint-Priest-en-Jarez
France

Joseph F. Dasta, MSc, FCCM, FCCP

Professor Emeritus
The Ohio State University
College of Pharmacy
Columbus, Ohio

John D. Davies, MA, RRT, FAARC

Clinical Research Coordinator
Duke University Medical Center
Durham, North Carolina

Robert W. Derlet, MD

Professor
Emergency Medicine
University of California-Davis
Davis, California

Mark Dershwitz, MD, PhD

Professor and Vice Chair of Anesthesiology
Professor of Biochemistry and Molecular Pharmacology
University of Massachusetts
Worcester, Massachusetts

Anne Marie G.A. de Smet, MD, PhD

Department of Intensive Care
Onze Lieve Vrouwe Gasthuis
Amsterdam, The Netherlands

Monica Dhand, MD

Tulane University School of Medicine
New Orleans, Louisiana

Anahat Dhillon, MD

Assistant Clinical Professor
Department of Anesthesiology and Critical Care Medicine
University of California-Los Angeles
Los Angeles, California

Rajeev Dhupar, MD

Resident, General Surgery
University of Pittsburgh Medical Center
Pittsburgh, Pennsylvania

Michael N. Diring, MD, FCCM, FAHA

Professor of Neurology, Neurosurgery, and Anesthesiology
Director, Neurology/Neurosurgery Intensive Care Unit
Washington University School of Medicine
St. Louis, Missouri

Peter Doelken, MD

Assistant Professor
Division of Pulmonology, Allergy, and Clinical Immunology
Medical University of South Carolina
Charleston, South Carolina

Michael Donahoe, MD

Associate Professor of Medicine
Division of Pulmonary, Allergy, and Critical Care Medicine
University of Pittsburgh School of Medicine
Pittsburgh, Pennsylvania

Timothy R. Donahue, MD

Assistant Professor
Departments of Surgery and Molecular and Medical Pharmacology
David Geffen School of Medicine
University of California—Los Angeles
Los Angeles, California

David J. Dries, MSE, MD

Assistant Medical Director of Surgical Care
HealthPartners Medical Group
Professor of Surgery and Anesthesiology
John F. Perry, Jr. Chair of Trauma Surgery
University of Minnesota
Minneapolis, Minnesota

Thomas D. DuBose Jr., MD

Tinsley R. Harrison Professor and Chair
Department of Internal Medicine
Wake Forest University School of Medicine
Winston-Salem, North Carolina

Susan Duthie, MD

Associate Medical Director
Pediatric Critical Care
UCSD-Rady Children's Hospital
San Diego, California

Randy Edwards, MD

Department of Surgery
Medical Director - Advanced Practitioners
Director - Outpatient Surgical Services
Surgical Critical Care
Hartford Hospital
Hartford, Connecticut

Philippe Eggimann, MD

Adult Critical Care
Centre Hospitalier Universitaire Vaudois
Lausanne, Switzerland

Waleed A. Elhassan, MD

Renal Fellow
University of Colorado Denver
Aurora, Colorado

E. Wesley Ely, MD, MPH

Professor of Medicine
Department of Allergy, Pulmonary, and Critical Care Medicine
Vanderbilt University Medical Center
Associate Director of Research GRECC
Tennessee Valley HealthCare System
Nashville, Tennessee

Guillaume Emeriaud, MD, PhD

Pediatric Intensivist
Assistant Clinical Professor
Department of Pediatrics
CHU Sainte-Justine
Université de Montréal
Montreal, Quebec, Canada

Gregory A. Eschenauer, PharmD, BCPS

Clinical Pharmacist, Infectious Diseases
Antibiotic Management Program
University of Pittsburgh Medical Center
Pittsburgh, Pennsylvania

Joel H. Ettinger

President and CEO
Category One Inc.
Pittsburgh, Pennsylvania

Joshua H. Ettinger, MBA

Executive Vice President
Category One, Inc.
Pittsburgh, Pennsylvania
President and CEO
The Magellan Institute, LLC
Louisville, Kentucky

David Clay Evans, MD

Clinical Instructor-Housestaff
Department of Surgery
The Ohio State University
Columbus, Ohio

Gregory T. Everson, MD

Professor of Medicine
School of Medicine
University of Colorado Denver
Director of Hepatology
Division of Gastroenterology and Hepatology
University of Colorado Denver
Aurora, Colorado

Derek V. Exner, MD, MPH, FRCPC, FACC, FHRS

Professor
Libin Cardiovascular Institute of Alberta
University of Calgary
Calgary, Alberta, Canada

Ronald J. Falk, MD

Doc J. Thurston Professor of Medicine
University of North Carolina
Director, UNC Kidney Center
Chief, Division of Nephrology and Hypertension
Chapel Hill, North Carolina

Jeremy Farrar, MBBS, FRCP, PhD

Clinical Reader University of Oxford
Director University of Oxford Research Unit
The Hospital of Tropical Diseases
Ho Chi Minh City, Vietnam

Alan P. Farwell, MD

Associate Professor of Medicine
 Boston University School of Medicine
 Director, Endocrine Clinics
 Section of Endocrinology, Diabetes, and Nutrition
 Boston Medical Center
 Boston, Massachusetts

Kathryn Felmet, MD

Assistant Professor of Critical Care Medicine and Pediatrics
 University of Pittsburgh School of Medicine
 Medical Director
 Critical Care Transport Team
 Children's Hospital of Pittsburgh
 Pittsburgh, Pennsylvania

Niall D. Ferguson, MD, MSc

Director, Critical Care Medicine
 University Health Network and Mount Sinai Hospital
 Assistant Professor
 Interdepartmental Division of Critical Care Medicine
 University of Toronto
 Toronto, Ontario, Canada

Miguel Ferrer, MD, PhD

Assistant Professor of Medicine
 University of Barcelona
 Attending Physician
 Respiratory Intensive Care Unit
 Institut Clínic del Tòrax
 Hospital Clínic, Barcelona, Spain
 Institut D'investigacions Biomèdiques August Pi i Sunyer
 Centro de Investigación Biomédica en Red
 Enfermedades Respiratorias
 Barcelona, Spain

Mitchell P. Fink, MD

Professor of Surgery and Anesthesiology
 Vice Chair for Critical Care
 Department of Surgery
 David Geffen School of Medicine
 University of California—Los Angeles
 Los Angeles, California

Ericka L. Fink, MD

Assistant Professor
 Division of Pediatric Critical Care Medicine
 Children's Hospital of Pittsburgh of UPMC
 Pittsburgh, Pennsylvania

Douglas N. Fish, PharmD

Professor and Chair
 Department of Clinical Pharmacy
 University of Colorado Anschutz Medical Campus
 Clinical Specialist in Critical Care/Infectious Diseases
 Department of Pharmacy
 University of Colorado Hospital
 Aurora, Colorado

Diana F. Florescu, MD

Assistant Professor of Medicine
 Department of Internal Medicine
 University of Nebraska Medical Center
 Omaha, Nebraska

Brett E. Fortune, MD

Gastroenterology/Hepatology Fellow
 Division of Gastroenterology and Hepatology
 University of Colorado Denver
 Aurora, Colorado

Bradley D. Freeman, MD

Professor of Surgery
 Washington University School of Medicine
 St. Louis, Missouri

Blake Froberg, MD

Assistant Professor of Pediatrics and Emergency Medicine
 Indiana University School of Medicine
 Indianapolis, Indiana

John J. Fung, MD, PhD

Director, Cleveland Clinic Transplant Center
 Chairman, Department of General Surgery
 The Cleveland Clinic
 Cleveland, Ohio

Brent Furbee, MD

Department of Emergency Medicine
 Division of Medical Toxicology
 Indiana University School of Medicine
 Indianapolis, Indiana

Richard L. Gamelli, MD, FACS

Dean
 Stritch School of Medicine
 Loyola University Chicago
 The Robert J. Freeark Professor of Surgery
 Department of Surgery
 Loyola University Medical Center
 Chief, Burn Center
 Department of Surgery
 Loyola University Medical Center
 Maywood, Illinois

Raúl J. Gazmuri, MD, PhD

Professor of Medicine
 Associate Professor of Physiology and Biophysics
 Director
 Resuscitation Institute
 Rosalind Franklin University of Medicine and Science
 Section Chief
 Department of Critical Care Medicine
 Captain James Lovell Federal Health Care Center
 North Chicago, Illinois

Robert H. Geelkerken, MD, PhD

Consultant Vascular Surgery
 Medisch Spectrum Twente
 Enschede, The Netherlands

Todd W.B. Gehr, MD

Professor of Medicine
 Vice Chairman of Internal Medicine
 Chairman, Division of Nephrology
 Virginia Commonwealth University
 Richmond, Virginia

Michael A. Gentile, RRT, FAARC, FCCM

Associate in Research
 Division of Pulmonary and Critical Care Medicine
 Duke University Medical Center
 Durham, North Carolina

M. Patricia George, MD

Assistant Professor of Medicine
Department of Medicine (Pulmonary, Allergy, and
Critical Care Medicine)
University of Pittsburgh
Pittsburgh, Pennsylvania

Herwig Gerlach, MD, PhD

Professor and Chairman
Department of Anesthesiology and Critical Care Medicine
Vivantes—Klinikum Neukoelln
Berlin, Germany

R. Mark Ghobrial, MD, PhD, FACS, FRCS (Ed)

Director, Center for Liver Disease and Transplantation
Director, Immunobiology Research Center
The Methodist Hospital
Houston, Texas
Professor of Surgery
Weill-Cornell Medical College
New York, New York

Helen Giamarellou, MD, PhD

Professor of Internal Medicine and Infectious Disease
Athens University Medical School
Head, 6th Department of Internal Medicine
Hygeia Hospital
Athens, Greece

Fredric Ginsberg, MD, FACC, FCCP

Assistant Professor of Medicine
Robert Wood Johnson Medical School at Camden
University of Medicine and Dentistry of New Jersey
Director, Nuclear Cardiology
Director, Heart Failure Program
Cooper University Hospital
Camden, New Jersey

Thomas G. Gleason, MD, MS

Associate Professor of Cardiothoracic Surgery
University of Pittsburgh School of Medicine
Pittsburgh, Pennsylvania

Jacques P. Goldstein, MD, PhD, FECTS

Principal Consultant
Cardio Gold Consulting
Bruxelles, Belgium

Hernando Gomez, MD

Instructor in Critical Care Medicine
University of Pittsburgh
Pittsburgh, Pennsylvania

Sherilyn Gordon Burroughs, MD, FACS

Department of Surgery
Weill Medical College of Cornell University, The Methodist Hospital
Methodist Transplant Center
Houston, Texas

Jeremy David Gradon, MD

Associate Professor of Medicine
The Johns Hopkins University School of Medicine
Attending Physician
Department of Medicine
Division of Infectious Diseases
Sinai Hospital of Baltimore
Baltimore, Maryland

Cornelia R. Graves, MD

Director of Perinatal Services
Obstetrics and Gynecology
Baptist Hospital
Medical Director
Tennessee Maternal Fetal Medicine
Clinical Professor
Obstetrics and Gynecology
Vanderbilt University
Nashville, Tennessee

Cesare Gregoretti, MD

Patient-Ventilator Interaction
DEA
CTO-M. Adelaide
Respiratory Mechanics
DEA
CTO-M. Adelaide
Torino, Italy

Jeffrey S. Groeger, MD

Chief, Urgent Care Service
Memorial Sloan Kettering Cancer Center
Professor of Medicine
Weill Medical College of Cornell University
New York, New York

R. Michael Grounds, MD

Reader in Intensive Care Medicine
St. George's Hospital
London, United Kingdom

Paul O. Gubbins, PharmD

Professor and Chair
Department of Pharmacy Practice
University of Arkansas for Medical Sciences College of Pharmacy
Little Rock, Arkansas

Kyle J. Gunnerson, MD

Associate Professor
Anesthesiology and Emergency Medicine
Associate Director, Center for Adult Critical Care
Director of Critical Care Anesthesiology
VCU Medical Center
Richmond, Virginia

Fahim A. Habib, MD FACS

Attending Trauma Surgeon
Ryder Trauma Center
Jackson Memorial Hospital
Director, Department of Critical Care
University of Miami Hospital
Assistant Professor of Surgery
DeWitt Daughtry Department of Surgery
University of Miami, Miller School of Medicine
Miami, Florida

Mitchell L. Halperin, MD, FRCPC, FRS

Department of Medicine
Division of Nephrology
St. Michaels Hospital
University of Toronto
Toronto, Ontario, Canada

Mary E. Hartman, MD, MPH

Pediatric Critical Care Medicine
Washington University
St. Louis, Missouri

Maurene A. Harvey, RN, MPH

Educator and consultant
Consultants in Critical Care Inc.
Glenbrook, Nevada

Moustafa A. Hassan, MD, FACS

Associate Professor of Surgery
SUNY Upstate Medical University
Syracuse, New York

Yoshiro Hayashi, MD, PhD

Department of Intensive Care Medicine
Royal Brisbane and Women's Hospital
University of Queensland Centre for Clinical Research
Brisbane, Australia

Jan A. Hazelzet, MD, PhD, FCCM

Assistant Professor
Pediatric Intensive Care
Erasmus MC
Rotterdam, The Netherlands

Stephen O. Heard, MD

Chairman
Department of Anesthesiology
Professor of Anesthesiology and Surgery
University of Massachusetts Medical School
Worcester, Massachusetts

Paul C. Hébert, MD

University of Ottawa Centre for Transfusion Research
Clinical Epidemiology Program of the Ottawa Health Research
Institute
Department of Medicine
Ottawa Hospital
Ottawa, Ontario, Canada

Elizabeth D. Hermsen, PharmD, MBA, BCPS-ID

Antimicrobial Stewardship Program Coordinator
Pharmacy Relations and Clinical Decision Support
The Nebraska Medical Center
Adjunct Assistant Professor
Pharmacy Practice
University of Nebraska Medical Center, College of Pharmacy
Adjunct Assistant Professor
Department of Internal Medicine, Section of Infectious Diseases
University of Nebraska Medical Center, College of Medicine
Omaha, Nebraska

Daren K. Heyland, MD

Professor of Medicine
Queen's University
Director of Clinical Evaluation Research Unit
Kingston General Hospital
Kingston, Ontario, Canada

Jonathan R. Hiatt, MD

Professor and Chief
Division of General Surgery
Vice Chair for Education
Department of Surgery
David Geffen School of Medicine at UCLA
Los Angeles, California

Robert W. Hickey, MD

Emergency Department
Children's Hospital of Pittsburgh of UPMC
Pittsburgh, Pennsylvania

Tran Tinh Hien, MD

Professor
Hospital for Tropical Diseases
London, United Kingdom

Thomas L. Higgins, MD, MBA, FACP, FCCM

Interim Chairman
Department of Medicine
Baystate Medical Center
Springfield, Massachusetts
Professor of Medicine, Surgery, and Anesthesiology
Tufts University School of Medicine
Boston, Massachusetts

Nicholas S. Hill, MD

Chief
Division of Pulmonary, Critical Care, and Sleep Medicine
Tufts Medical Center
Professor of Medicine
Tufts University School of Medicine
Boston, Massachusetts

Horacio Hojman, MD, FACS

Associate Trauma Director
Department of Surgery
Tufts Medical Center
Assistant Professor
Department of Surgery
Tufts Medical School
Boston, Massachusetts

Steven M. Hollenberg, MD

Professor of Medicine
Robert Wood Johnson Medical School/UMDNJ
Director, Coronary Care Unit
Cooper University Hospital
Camden, New Jersey

J. Terrill Huggins, MD

Assistant Professor of Medicine
Department of Medicine
Division of Pulmonary, Critical Care, Allergy, and Sleep Medicine
Medical University of South Carolina
Charleston, South Carolina

David T. Huang, MD, MPH

Assistant Professor
Departments of Critical Care Medicine and Emergency Medicine
University of Pittsburgh
Attending Physician
University of Pittsburgh Medical Center
Pittsburgh, Pennsylvania

Christopher G. Hughes, MD

Assistant Professor of Anesthesiology
Vanderbilt University School of Medicine
Nashville, Tennessee

Russell D. Hull, MBBS, MSc, FRCPC, FACP, FCCP

Professor of Medicine, Hematology, and Internal Medicine
Director, Thrombosis Research Unit
University of Calgary
Calgary, Alberta, Canada

Margaret Isaac, MD

Acting Instructor
General Internal Medicine and Palliative Care
University of Washington/Harborview Medical Center
Seattle, Washington

James P. Isbister, MB, BS, BSc, FRACP, FRCPA

Clinical Professor of Medicine
Northern Clinical School
Royal North Shore Hospital
Sydney Medical School
St. Leonards, New South Wales, Australia

Connie Jastremski, RN, MS, MBA, FCCM

Network CNO/VP, Patient Care Services
Bassett Healthcare Network
Cooperstown, New York

Larry Jenkins, PhD

Associate Professor, Department of Neurosurgery
University of Pittsburgh School of Medicine
Pittsburgh, Pennsylvania

Paul Jodka, MD, FCCP

Baystate Health System
Springfield, Massachusetts
Intensivist, Adult Intensive Care Unit
Associate Professor of Medicine, Anesthesiology, and Surgery
Tufts University School of Medicine
Boston, Massachusetts

Robert G. Johnson, MD

C. Rollins Hanlon Professor and Chair
Department of Surgery
Saint Louis University
St. Louis, Missouri

Philippe G. Jorens, MD, PhD

Professor in Critical Care Medicine and Clinical
Pharmacology/Toxicology
Department of Critical Care Medicine
Antwerp University Hospital (UZA)
University of Antwerp
Edegem, Belgium

Vern C. Juel, MD

Associate Professor of Medicine
Division of Neurology
Duke University School of Medicine
Durham, North Carolina

Rose Jung, PharmD, MPH, BCPS

Clinical Associate Professor
Department of Pharmacy Practice
The University of Toledo
Toledo, Ohio

Christina R. Kahl, MD, PhD

Fellow in Nephrology and Hypertension
UNC Kidney Center
University of North Carolina
Chapel Hill, North Carolina

Andre C. Kalil, MD

Associate Professor of Medicine
Department of Internal Medicine
University of Nebraska Medical Center
Omaha, Nebraska

Edo Kaluski, MD, FACC, FESC, FSCAI

Associate Professor of Medicine
University of Medicine and Dentistry of New Jersey
Director of Cardiac Catheterization Laboratories and
Interventional Cardiology
University Hospital
Newark, New Jersey

Kamel S. Kamel, MBBCh

Division of Nephrology
St. Michael's Hospital
University of Toronto
Toronto, Canada

Sandra Kane-Gill, PharmD, MSc, FCCM, FCCP

Associate Professor
School of Pharmacy and Clinical Translational Science Institute
Center for Pharmacoinformatics and Outcomes Research
University of Pittsburgh
Critical Care Medication Safety Officer
Department of Pharmacy
University of Pittsburgh Medical Center
Pittsburgh, Pennsylvania

Jeffrey P. Kanne, MD

Associate Professor
Department of Radiology
University of Wisconsin School of Medicine and Public Health
Madison, Wisconsin

Lionel Karlin, MD

Department of Clinical Immunology
Hôpital Saint-Louis
Assistance Publique-Hôpitaux de Paris
Paris, France

Marinka Kartalija, MD

Infectious Diseases Research Fellow
University of Colorado Anschutz Medical Campus
Denver Veterans Affairs Medical Center
Denver, Colorado

James Kasiewicz, MD

Surgeon
Lawnwood Regional Treasure Coast Trauma Center
Fort Pierce, Florida
University of Pittsburgh Medical Center
Pittsburgh, Pennsylvania

Kenneth D. Katz, MD, FAAEM, FACMT, ABMT

Chief, Division Medical Toxicology
Assistant Professor
UPMC Presbyterian Hospital
Medical Director
Pittsburgh Poison Center
Pittsburgh, Pennsylvania

David Kaufman, MD

Associate Professor
Department of Surgery, Anesthesiology, Medicine, Medical
Humanities, Urology
University of Rochester
Rochester, New York

John A. Kellum, MD

Professor and Vice Chair
Critical Care Medicine
University of Pittsburgh
Pittsburgh, Pennsylvania

Rick Kingston, PharmD

President, Regulatory and Scientific Affairs
Senior Clinical Toxicologist
SafetyCall International Poison Center
Clinical Professor of Pharmacy
College of Pharmacy
University of Minnesota
Minneapolis, Minnesota

Orlando C. Kirton, MD, FACS, FCCM, FCCP

Professor of Surgery
Program Director
Integrated General Surgery Residency Program
Vice Chair
Department of Surgery
University of Connecticut School of Medicine
Farmington, Connecticut

Kurt Kleinschmidt, MD

Professor of Surgery
Division of Emergency Medicine
University of Texas Southwestern Medical Center
Section Chief and Program Director
Medical Toxicology
Dallas, Texas

Jason Knight, MD

Emergency Department Medical Director
Maricopa Medical Center
Phoenix, Arizona

Patrick M. Kochanek, MD, FCCM

Professor and Vice Chairman
Department of Critical Care Medicine
Professor of Anesthesiology, Pediatrics, and Clinical and
Translational Science
Director
Safar Center for Resuscitation Research
University of Pittsburgh School of Medicine
Pittsburgh, Pennsylvania

W. Andrew Kofke, MD, MBA, FCCM

Professor, Director of Neuroanesthesia
Co-Director Neurocritical Care
Department of Anesthesiology and Critical Care
Department of Neurosurgery
University of Pennsylvania
Philadelphia, Pennsylvania

Jeroen J. Kolkman, MD, PhD

Gastroenterologist
Department of Gastroenterology
Medisch Spectrum Twente
Enschede, The Netherlands

Robert L. Kormos, MD, FRCS(C), FAHA

Director, Artificial Heart Program
Co-Director, Heart Transplantation
Medical Director, Vital Engineering
University of Pittsburgh Medical Center
Professor, Department of Surgery
University of Pittsburgh School of Medicine
Pittsburgh, Pennsylvania

Rosemary A. Kozar, MD, PhD

Professor of Surgery
Division of Acute Care Surgery
University of Texas—Houston
Houston, Texas

David J. Kramer, MD, FACP

Professor of Medicine
Mayo Clinic College of Medicine
Director, Transplant Critical Care Service
Mayo Clinic
Jacksonville, Florida

John W. Kreit, MD

Professor of Medicine
Division of Pulmonary, Allergy, and Critical Care Medicine
University of Pittsburgh School of Medicine
Pittsburgh, Pennsylvania

James A. Kruse, MD

Clinical Professor of Medicine
Columbia University College of Physicians and Surgeons
Chief, Critical Care Services
Bassett Medical Center
Cooperstown, New York

Anand Kumar, MD

Associate Professor of Medicine, Medical Microbiology, and
Pharmacology/Therapeutics
University of Manitoba
Associate Professor of Medicine
University of Medicine and Dentistry of New Jersey
Newark, New Jersey

Vladimir Kvetan, MD, FCCM

Director, Jay B. Langner Critical Care System
Montefiore Medical Center
Director
Division of Critical Care Medicine
Department of Medicine
Professor of Anesthesiology and Clinical Medicine
Albert Einstein College of Medicine of Yeshiva University
Bronx, New York

Jacques Lacroix, MD, FRCPC, FAAP

Professor
Department of Pediatrics
Université de Montréal
Montréal, Québec, Canada

Gilles Lebuffe, MD, PhD

Professor
Department of Anesthesiology and Critical Care
University Hospital—Nord de France
Lille, France

Virginie Lemiale, MD

AP-HP, Hôpital Saint-Louis
Réanimation Médicale
1 Avenue Claude Vellefaux
Paris, France

Angela M. Leung, MD, MSc

Instructor of Medicine
Section of Endocrinology, Diabetes, and Nutrition
Boston University School of Medicine
Boston, Massachusetts

Sharon Leung, MD

Division of Critical Care Medicine
Montefiore Medical Center and the Albert Einstein College
of Medicine
Bronx, New York

Allan D. Levi, MD, PhD, FACS

Professor of Neurosurgery
University of Miami, Miller School of Medicine
Chief of Neurosurgery
University of Miami Hospital
Miami, Florida

Phillip D. Levin, MA, MB, BChir

Attending Physician
Department of Anesthesiology and Critical Care Medicine
Hadassah Hebrew University Medical Center
Jerusalem, Israel

Mitchell M. Levy, MD

Professor of Medicine
Chief
Division of Pulmonary and Critical Care Medicine
Department of Medicine
Brown University
Director MICU
Rhode Island Hospital
Providence, Rhode Island

Mah Chou Liang, MD

Interdepartmental Division of Critical Care
University of Toronto
Toronto, Ontario, Canada
Department of Anaesthesia and Surgical Intensive Care Unit
Changi General Hospital
Singapore

Scott Liebman, MD, MPH

Assistant Professor of Medicine
Division of Nephrology
University of Rochester
Rochester, New York

Stuart L. Linas, MD

Professor of Medicine and Rocky Mountain Professor
of Renal Research
University of Colorado Denver School of Medicine
Chief of Nephrology
Denver Health Medical Center
Denver, Colorado

Gregory Y.H. Lip, MD, FRCP, FESC, FACC

Professor of Cardiovascular Medicine
University of Birmingham
Visiting Professor of Haemostasis Thrombosis and Vascular Sciences
University of Aston
Centre for Cardiovascular Sciences
City Hospital
Birmingham, United Kingdom

Pamela A. Lipsett, MD

Professor of Surgery, Anesthesiology and Critical Care Medicine,
and Nursing
Johns Hopkins University Schools of Medicine and Nursing
Co-Director, General Surgery Intensive Care Units
Program Director, General Surgery and Surgical Critical Care
Johns Hopkins
Baltimore, Maryland

Alan Lisbon, MD

Associate Professor of Anaesthesia
Harvard Medical School
Executive Vice Chair Anesthesia
Beth Israel Deaconess Medical Center
Boston, Massachusetts

Carmen Lucena, MD

Beca Josep Font. Hospital Clínic
Barcelona, Spain

Andrew I.R. Maas, MD, PhD

Professor and Chairman
University Hospital Antwerp
Antwerp, Belgium

Neil R. MacIntyre, MD

Professor of Medicine
Clinical Chief
Division of Pulmonary and Critical Care Medicine
Duke University
Durham, North Carolina

Duncan Macrae, MB ChB, FRCA, FRCPC

Consultant Pediatric Intensivist
Royal Brompton and Harefield NHS Trust
London, United Kingdom

Bernhard Maisch, MD, FESC, FACC

Professor and Director
Department of Cardiology
Marburg Heart Center
Marburg, Germany

Amer M. Malik, MD, MBA

Vascular Neurology Fellow
UPMC Stroke Institute
University of Pittsburgh School of Medicine
Pittsburgh, Pennsylvania