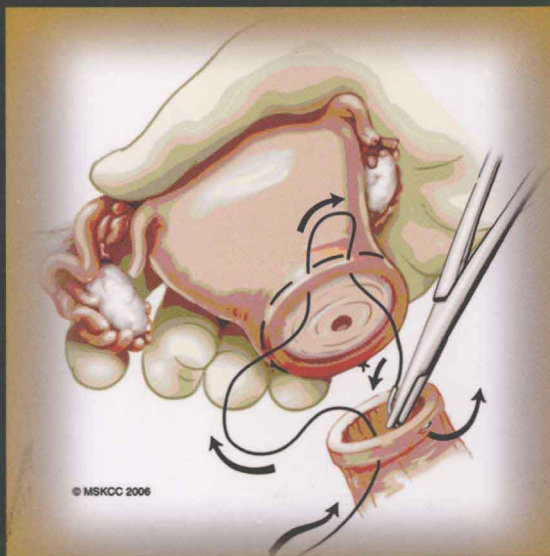


Principles and Practice of Gynecologic Oncology

FIFTH EDITION



Richard R. Barakat
Maurie Markman
Marcus E. Randall



Wolters Kluwer
Health

Lippincott
Williams & Wilkins

PRINCIPLES AND PRACTICE OF GYNECOLOGIC ONCOLOGY

FIFTH EDITION

Edited by

Richard R. Barakat, MD, FACOG, FACS

Chief, Gynecology Service, Department of Surgery
Ronald O. Perelman Chair in Gynecologic Surgery
Vice Chairman, Clinical Affairs, Department of Surgery
Memorial Sloan-Kettering Cancer Center
New York, New York

Maurie Markman, MD

Vice President for Clinical Research
The University of Texas M. D. Anderson Cancer Center
Houston, Texas

Marcus E. Randall, MD, FACR

Chairman, Department of Radiation Medicine
University of Kentucky
Lexington, Kentucky



Wolters Kluwer | Lippincott Williams & Wilkins
Health

Philadelphia • Baltimore • New York • London
Buenos Aires • Hong Kong • Sydney • Tokyo

Acquisitions Editor: Jonathan W. Pine, Jr.
Managing Editor: Joyce Murphy
Marketing Manager: Angela Panetta
Project Manager: Paula C. Williams
Designer: Stephen Druding
Production Services: International Typesetting and Composition

Fifth Edition

Copyright © 2009, 2005 by Lippincott Williams & Wilkins, a Wolters Kluwer business.

351 West Camden Street
Baltimore, MD 21201

530 Walnut Street
Philadelphia, PA 19106

Printed in China

All rights reserved. This book is protected by copyright. No part of this book may be reproduced or transmitted in any form or by any means, including as photocopies or scanned-in or other electronic copies, or utilized by any information storage and retrieval system without written permission from the copyright owner, except for brief quotations embodied in critical articles and reviews. Materials appearing in this book prepared by individuals as part of their official duties as U.S. government employees are not covered by the above-mentioned copyright. To request permission, please contact Lippincott Williams & Wilkins at 530 Walnut Street, Philadelphia, PA 19106, via email at permissions@lww.com, or via website at lww.com (products and services).

9 8 7 6 5 4 3 2

Library of Congress Cataloging-in-Publication Data

Principles and practice of gynecologic oncology.—5th ed. / [edited by]
Richard R. Barakat, Maurie Markman, Marcus Randall.

p. ; cm.

Includes bibliographical references and index.

ISBN-13: 978-0-7817-7845-9

ISBN-10: 0-7817-7845-X

1. Generative organs, Female—Cancer. I. Barakat, Richard R. II. Markman, Maurie. III. Randall, Marcus, 1956-

[DNLM: 1. Genital Neoplasms, Female. 2. Breast Neoplasms. WP 145 P957 2009]

RC280.G5P75 2009

616.99'465—dc22

2008045509

DISCLAIMER

Care has been taken to confirm the accuracy of the information present and to describe generally accepted practices. However, the authors, editors, and publisher are not responsible for errors or omissions or for any consequences from application of the information in this book and make no warranty, expressed or implied, with respect to the currency, completeness, or accuracy of the contents of the publication. Application of this information in a particular situation remains the professional responsibility of the practitioner; the clinical treatments described and recommended may not be considered absolute and universal recommendations.

The authors, editors, and publisher have exerted every effort to ensure that drug selection and dosage set forth in this text are in accordance with the current recommendations and practice at the time of publication. However, in view of ongoing research, changes in government regulations, and the constant flow of information relating to drug therapy and drug reactions, the reader is urged to check the package insert for each drug for any change in indications and dosage and for added warnings and precautions. This is particularly important when the recommended agent is a new or infrequently employed drug.

Some drugs and medical devices presented in this publication have Food and Drug Administration (FDA) clearance for limited use in restricted research settings. It is the responsibility of the health care provider to ascertain the FDA status of each drug or device planned for use in their clinical practice.

To purchase additional copies of this book, call our customer service department at (800) 638-3030 or fax orders to (301) 223-2320. International customers should call (301) 223-2300.

Visit Lippincott Williams & Wilkins on the Internet: <http://www.lww.com>. Lippincott Williams & Wilkins customer service representatives are available from 8:30 am to 6:00 pm, EST.

This book is dedicated to our families—Catherine Barakat and children Joanna, Richard Jr., and Christian Barakat; Brabham Morgan Randall and children Ken, Morgan, and Marycobb Randall; and Tomes Markman and children Margaret, Jonathan, Timothy, and Elisabeth Markman. By virtue of their patience, good humor, encouragement, and tolerance of our long hours at work, they have each made significant contributions to this book.

FOREWORD

Stuart Freeman, in charge of production of oncology textbooks at Lippincott Publishers (now Lippincott Williams & Wilkins) approached the three of us—Carlos Perez, Robert Young, and me—in the early 1990s to collaborate in editing a textbook on gynecologic cancer. We met to plan the text in 1992, and 2 years later, in 1994, the first edition was published. With the able guidance of Stuart, we developed several basic principles: (a) The textbook would be multidisciplinary, with the disease chapters authored by a surgeon, a medical oncologist, a radiation oncologist, and a pathologist; (b) the editors would strive to make the textbook a definitive reference that would be written at the level of an expert in surgery, medical oncology, and radiation oncology; (c) the text would be divided into three sections: basic science, modalities of therapy, and the disease chapters, which cover current principles of treatment; (d) we would edit the book in two sessions, each lasting 2 to 3 days, with all the editors sitting at one table reading the same chapter; (e) we would strive to publish an updated edition every 3 years.

Over the next 12 years, we published four editions of the text, the first three under the guidance of Stuart Freeman and the last edition under the guidance of Jonathan Pine. We appreciate the assistance and support that we received from Lippincott Williams & Wilkins throughout. We were, and remain, grateful for the opportunity to develop a close friendship and, most important, we were satisfied that our book was a definitive and valuable text for those physicians who treat gynecologic cancer.

In the planning for the fourth edition, the three editors agreed that it would be our last edition and that we should select new editors to continue the publication of the text. As a group, we chose Richard Barakat, MD, Maurie Markman, MD, and Marcus Randall, MD, and they worked with us on the preparation of the fourth edition. In this fifth edition of *Principles and*

Practice of Gynecologic Oncology, our only involvement is to write the Foreword. This edition and the ones to come are the work of Rich, Maurie, and Marc. We are grateful that the current editors have agreed to carry on the text, and we anticipate that this text will be outstanding and uphold the tradition of presenting the state of the art in gynecologic oncology.

The landscape in the management of patients with gynecologic cancer has rapidly evolved in recent years. A vaccine for human papillomavirus (HPV) is being administered worldwide, with the expectation that it will substantially decrease the incidence and mortality of carcinoma of the uterine cervix. All aspects of the diagnosis and treatment of gynecologic cancer have become more complex. Surgical procedures are more radical, and there are many new chemotherapeutic and targeted agents (both cytotoxic and biologic) and new equipment and techniques in radiation oncology. Survival rates for ovarian and cervical cancer have improved, and survival for corpus cancer is stable. In 2007, the 5-year survival for all stages and all races was 45% for ovary, 72% for cervix, and 83% for corpus cancers.

This text continues to be the most comprehensive and up-to-date book for the physicians who treat women with gynecologic cancer, and with its multidisciplinary approach still addresses the most important aspects of basic biology, pathology, modalities of therapy, and therapeutic options by disease site.

As the original editors of this text, we are very pleased with this fifth edition of *Principles and Practice of Gynecologic Oncology* and congratulate the new editors, Drs. Richard Barakat, Maurie Markman, and Marcus Randall, for their achievement. We are confident they will continue to produce timely and up-to-date editions in the future.

William J Hoskins, MD
Carlos A Perez, MD
Robert C Young, MD

CONTRIBUTING AUTHORS

Nadeem R. Abu-Rustum, MD

Associate Attending Director
Minimally Invasive Surgery Program
Gynecology Service, Department of Surgery
Memorial Sloan-Kettering Cancer Center
New York, New York

David S. Alberts, MD

Professor of Medicine, Pharmacology, Nutritional Sciences,
and Public Health
Director, Arizona Cancer Center
University of Arizona
Tucson, Arizona

Kaled M. Alektiar, MD

Attending Radiation Oncologist
Department of Radiation Oncology
Memorial Sloan-Kettering Cancer Center
New York, New York

Christina M. Annunziata, MD, PhD

Associate Clinical Investigator
Molecular Signaling Section
Medical Oncology Branch
Center for Cancer Research
National Cancer Institute
Bethesda, Maryland

Susan M. Ascher, MD

Professor
Department of Radiology
Director, Division of Abdominal Imaging
Georgetown University Hospital
Washington, DC

Nilofer S. Azad, MD

Medical Oncology Fellow
Molecular Signaling Section
Medical Oncology Branch
Center for Cancer Research
National Cancer Institute
Bethesda, Maryland

Andrew Berchuck, MD

Professor and Director
Division of Gynecologic Oncology
Duke University Medical Center
Durham, North Carolina

Ross S. Berkowitz, MD

William H. Baker Professor of Gynecology
Harvard Medical School
Director
Gynecologic Oncology and Gynecology
Co-director, New England Trophoblastic
Disease Center
Brigham and Women's Hospital
Dana Farber Cancer Center
Boston, Massachusetts

Michael J. Birrer, MD, PhD

Director
Gynecologic Cancer Research Program
Dana Farber/Harvard Cancer Center
Professor of Medicine, Harvard Medical School
Director, Gillette Center
for Gynecologic Oncology
Massachusetts General Hospital
Cancer Center
Boston, Massachusetts

Michael A. Bookman, MD

Member
Division of Medical Science
Fox Chase Cancer Center
Philadelphia, Pennsylvania

Jeff Boyd, PhD

Vice President for Laboratory Science
Memorial Health University Medical Center
Associate Director for Laboratory Science
Anderson Cancer Institute
Savannah, Georgia

Mark F. Brady, PhD

Director of Statistics
Gynecological Oncology Group (GOG) Statistical
Office and Data Center
Roswell Park Cancer Institute
Buffalo, New York

Louise A. Brinton, PhD

Chief
Hormonal and Reproductive Epidemiology Branch
National Cancer Institute
Rockville, Maryland

Robert E. Bristow, MD

Professor and Director
The Kelly Gynecologic Oncology Service
Department of Gynecology and Obstetrics
The Johns Hopkins Medical Institutions
Baltimore, Maryland

James J. Burke II, MD

Associate Professor
Department of Obstetrics and Gynecology
Division of Gynecologic Oncology
Mercer University School of Medicine
Memorial University Medical Center
Savannah, Georgia

Joanna M. Cain, M.D.

Chace/Joukowsky Professor and Chair
Surgeon-in-Chief
Department of Gynecology and Obstetrics
Rhode Island Hospital
Obstetrician and Gynecologist-in-Chief
Women & Infants Hospital
Providence, Rhode Island

Higinia Cárdenes, MD, PhD

Professor
Radiation Oncology Department
Indiana University School of Medicine
Indianapolis, Indiana

Jeanne Carter, PhD

Assistant Attending Psychologist
Department of Psychiatry
Memorial Sloan-Kettering Cancer Center
New York, New York

David Cella, PhD

Professor and Executive Director
Center on Outcomes Research
and Education
Evanston Northwestern Healthcare
Robert H. Lurie Comprehensive Cancer Center
of Northwestern University
Evanston, Illinois

David Z. Chang, MD, PhD

Assistant Professor of Medicine
Department of Gastrointestinal Medical Oncology
and Immunology
The University of Texas M. D. Anderson Cancer Center
Houston, Texas

Dana Chase, M.D.

Clinical Instructor
Division of Gynecologic Oncology
Department of Obstetrics and Gynecology
University of California Irvine
Irvine, California

Dennis S. Chi, MD

Associate Member
Gynecology Service, Department of Surgery
Memorial Sloan-Kettering Cancer Center
New York, New York

Cirrelda Cooper, MD

Professor
Department of Radiology
Division of Abdominal Imaging
Georgetown University Hospital
Washington, DC

Mary B. Daly, MD, PhD

Senior Vice President for Population Science
Fox Chase Cancer Center
Philadelphia, Pennsylvania

Chaitanya R. Divgi, MD

Professor of Radiology and Radiation Oncology
Professor
Wistar Institute
Member, Abramson Cancer Center
University of Pennsylvania
Chief, Division of Nuclear Medicine
and Clinical Molecular Imaging
Hospital of the University of Pennsylvania
Philadelphia, Pennsylvania

Don S. Dizon, MD

Director of Medical Oncology and Integrative Care
Co-Director, Center for Sexuality, Intimacy, and Fertility
Program in Women's Oncology
Women and Infants Hospital of Rhode Island
Assistant Professor, Obstetrics-Gynecology and Medicine
The Warren Alpert Medical School of Brown University
Providence, Rhode Island

Robert T. Dorr, Ph.D.

Professor of Pharmacology
Arizona Cancer Center
Cancer Center Division
University of Arizona
Tucson, Arizona

Beth A. Erickson-Wittmann, MD, FACP

Professor of Radiation Oncology
Radiation Oncology Clinic
Medical College of Wisconsin
Milwaukee, Wisconsin

John H. Farley, MD, COL, FACOG, FACS

Associate Professor
Senior Medical Coordinator Advisor
Department of Obstetrics and Gynecology
Uniformed Services University of the Health Sciences
Bethesda, Maryland

Gwenael Ferron, MD

Department of Surgery
Institut Claudius Regaud Cancer Center
Toulouse, France

Gini F. Fleming, MD

Professor of Medicine
University of Chicago Medical Center
Chicago, Illinois

Damean Freas, MD

Fellow
Department of Pain Medicine and Palliative Care
Beth Israel Medical Center
New York, New York

Daniel P. Gaile, PhD

Assistant Professor
Department of Biostatistics
School of Public Health and Health Professions
Roswell Park Cancer Institute
New York State Center of Excellence in Bioinformatics
and Life Sciences
Buffalo, New York

Donald G. Gallup, MD

Professor, Chair, and Program Director
Department of Obstetrics and Gynecology
Mercer University School of Medicine
Savannah, Georgia

Ginger J. Gardner, MD

Assistant Attending Surgeon
Gynecology Service, Department of Surgery
Memorial Sloan-Kettering Cancer Center
New York, New York

Jennifer S. Gass, MD, FACS

Chief of Surgery
Director of the Breast Fellowship
Women and Infants Hospital of Rhode Island
Assistant Professor (Clinical)
The Warren Alpert Medical School of Brown University
Providence, Rhode Island

Aleksandra Gentry-Maharaj, PhD

Research Fellow
Gynaecological Cancer Research Centre
EGA Institute for Women's Health
University College London
London, United Kingdom

David M. Gershenson, MD

Professor and Chairman
Department of Gynecologic Oncology
University of Texas M.D. Anderson Cancer Center
Houston, Texas

Donald P. Goldstein, MD

Professor of Obstetrics, Gynecology, and Reproductive Biology
Harvard Medical School
Co-director
New England Trophoblastic Disease Center
Department of Obstetrics and Gynecology
Brigham and Women's Hospital
Dana Farber Cancer Institute
Boston, Massachusetts

Lynn C. Hartmann, MD

Professor of Oncology
Co-leader, Mayo Women's Cancer Program
Mayo Clinic Cancer Center
Rochester, Minnesota

Lisa M. Hess, MD, PhD

Science Officer
Cancer Center Division
Leon-Levy Cancer Center
University of Arizona
Tucson, Arizona

Ebony R. Hoskins, MD

Cancer Research Training Award Fellow
Molecular Signaling Section
Medical Oncology Branch
Center for Cancer Research
National Cancer Institute
Bethesda, Maryland

Alan N. Houghton, MD

Virginia and Daniel K. Ludwig Clinical Chair
Member, Attending Physician, and Chief, Clinical Immunology Service
Vice-Chair
Department of Medicine
Head, Swim Across America Laboratory of Tumor Immunology
Memorial Sloan-Kettering Cancer Center
Professor of Medicine and Immunology
Weill Medical School
Graduate School of Medical Sciences of Cornell University
New York, New York

Hedvig Hricak, MD, PhD, Dr hc

Professor of Radiology
Weill Medical College of Cornell University
Chairman, Department of Radiology
Memorial Sloan-Kettering Cancer Center
New York, New York

Alan D. Hutson, PhD

Chair and Professor
Department of Biostatistics
School of Public Health and Health Professions
The University of Buffalo, SUNY
Buffalo, New York

Ian Jacobs, MD, FRCOG

Professor of Women's Health
Dean, UCL and Partners Health Sciences Research
Gynaecological Cancer Research Centre
EGA Institute for Women's Health
University College London
London, United Kingdom

Amir A. Jazaeri, MD

Assistant Professor
Department of Obstetrics and Gynecology
Division of Gynecologic Oncology
Charlottesville, Virginia

John Kavanagh, MD

Professor and Associate Director of Therapeutic Development
Department of Gynecologic Oncology
The University of Texas M. D. Anderson Cancer Center
Houston, Texas

Hanan I. Khalil, MD

Women's Imaging
Women and Infants Hospital of Rhode Island
Assistant Professor of Diagnostic Imaging (Clinical)
The Warren Alpert Medical School of Brown University
Providence, Rhode Island

Kevin Khater, MD, PhD

Medical Director
Radiation Oncology of Northern Illinois
Ottawa, Illinois

Susan L. Koelliker, MD

Women's Imaging, Body Imaging
Women and Infants Hospital of Rhode Island
Assistant Professor of Diagnostic Imaging (Clinical)
The Warren Alpert Medical School of Brown University
Providence, Rhode Island

Wui-Jin Koh, MD

Associate Professor
Department of Radiation Oncology
University of Washington Medical Center
Seattle, Washington

Elise C. Kohn, MD

Head
Molecular Signaling Section
Medical Oncology Branch
National Cancer Institute
Bethesda, Maryland

Eric Leblanc, MD

Département de Cancérologie Gynécologique
Centre Oscar Lambret
Lille, France

Robert D. Legare, MD

Director
Breast Health Center
Director
Cancer Risk and Prevention Program
Women and Infants Hospital of Rhode Island
Assistant Professor of Medicine and Obstetrics-Gynecology
The Warren Alpert Medical School of Brown University
Providence, Rhode Island

Pauline Lesage, MD

Director of the Palliative Care
Division, Department of Pain Medicine and Palliative Care
Medical Director, Continuum Hospice Care/
Jacob Perlow Hospice
Beth Israel Hospital
New York, New York

Philip O. Livingston, MD

Member and Attending Physician
Memorial Sloan-Kettering Cancer Center
Head, Laboratory of Tumor Vaccinology
Professor of Medicine
Weill Medical School
Graduate School of Medical Sciences of Cornell University
New York, New York

Harry Long III, MD

Professor of Oncology
Division of Medical Oncology
Mayo Clinic College of Medicine
Rochester, Minnesota

Stephanie MacAusland, MD

Assistant Professor of Radiation Oncology
The Warren Alpert Medical School of Brown University
Providence, Rhode Island

Maurie Markman, MD

Vice President for Clinical Research
Chairman, Department of Gynecologic Medical Oncology
Professor of Cancer Medicine
The University of Texas M. D. Anderson Cancer Center
Houston, Texas

Daniela E. Matei, MD

Associate Professor
Melvin and Bren Simon Cancer Center
Indiana University
Indianapolis, Indiana

G. Larry Maxwell, MD

Director
Gynecologic Disease Center
Chief, Division of Gynecologic Oncology
Walter Reed Army Medical Center
Professor, Uniformed Services University
Washington, DC

William P. McGuire, MD

Director
Harry and Jeanette Weinberg Cancer Institute
Baltimore, Maryland

D. Scott McMeekin, MD

Virginia Kerley Cade Chair in Cancer
Developmental Therapeutics
Section Chief
Gynecologic Oncology
University of Oklahoma
Oklahoma City, Oklahoma

Usha Menon, MD, FRCOG

Senior Lecturer/Consultant Gynaecologist
Gynaecological Cancer Research Centre
EGA Institute for Women's Health
University College London
London, United Kingdom

Helen Michael, MD

Professor
Department of Pathology
Indiana University School of Medicine
Chief, Pathology and Laboratory Medicine
Clarian North Medical Center
Indianapolis, Indiana

David Moore, MD

Mary Fendrich Hulman Professor of Gynecologic Oncology
Indiana University
Indianapolis, Indiana

Arno J. Mundt, MD

Professor and Chair
Department of Radiation Oncology
Moore's UCSD Cancer Center
La Jolla, California

David G. Mutch, MD

Judith and Ira Gall Professor of Gynecologic Oncology
Director, Division of Gynecologic Oncology
Washington University School of Medicine
St. Louis, Missouri

Steven A. Narod, MD, FRCP

Canada Research Chair in Breast Cancer
Professor, Public Health Sciences
Women's College Research Institute
Toronto, Ontario, Canada

Brigid O'Connor, MD

Assistant Professor of Radiation Oncology
The Warren Alpert Medical School of Brown University
Providence, Rhode Island

Janet L. Osborne, MD

Assistant Professor
Department of Obstetrics and Gynecology
Division of Gynecologic Oncology
Froedtert Memorial Lutheran Hospital
Milwaukee, Wisconsin

Richard Penson, MD, MRCP

Clinical Director
Medical Gynecologic Oncology
Massachusetts General Hospital
Assistant Professor, Harvard Medical School
Boston, Massachusetts

Marie Plante, MD

Associate Professor
Department of Obstetrics and Gynecology
Laval University
Quebec, Canada

Russell K. Portenoy, MD

Chairman, Department of Pain Medicine and Palliative Care
Beth Israel Medical Center
New York, New York

Denis Querleu, MD

Professor and Head
Department of Surgery
Institut Claudius Regaud
Toulouse, France

Issam I. Raad, MD, FACP, FIDSA

Professor of Medicine
Chairman, Department of Infectious Diseases, Infection Control, and Employee Health
The University of Texas M. D. Anderson Cancer Center
Houston, Texas

Marcus E. Randall, MD, FACR

Markey Foundation Chair and Professor
Department of Radiation Medicine
University of Kentucky
Lexington, Kentucky

Laurel W. Rice, MD

Professor and Chair
Department of Obstetrics and Gynecology
University of Wisconsin School of Medicine and Public Health
Madison, Wisconsin

John I. Risinger, PhD

Associate Member
Memorial University Medical Center
Anderson Cancer Institute
Savannah, Georgia

Brigitte M. Ronnett, MD

Professor
Departments of Pathology and Gynecology and Obstetrics
The Johns Hopkins University School of Medicine and Hospital
Baltimore, Maryland

Lawrence M. Roth, MD

Professor Emeritus of Pathology
Indiana University School of Medicine
Indianapolis, Indiana

Eric K. Rowinsky, MD

Chief Medical Officer, Senior Vice President
ImClone Systems Incorporated
Branchburg, New Jersey
Adjunct Professor of Medicine
New York University School of Medicine
New York, New York

Jason Rownd, MS, DABMP

Senior Medical Physicist
Radiation Oncology Clinic
Medical College of Wisconsin
Milwaukee, Wisconsin

Stephen C. Rubin, MD

Director
Division of GYN Oncology
University of Pennsylvania Medical Center
Philadelphia, Pennsylvania

Anthony H. Russell, MD

Associate Professor of Radiation Oncology
Harvard Medical School
Chief
Gynecologic Radiation Oncology Service
Department of Radiation Oncology
Massachusetts General Hospital
Boston, Massachusetts

Paul J. Sabbatini, MD

Associate Attending Physician
Gynecologic Medical Oncology Service
Department of Medicine
Memorial Sloan-Kettering Cancer Center
New York, New York

Amar Safdar, MD, FACP, FIDSA

Associate Professor of Medicine
Director
Clinical Mycobacterial Research
Department of Infectious Diseases, Infection Control,
and Employee Health
The University of Texas M. D. Anderson Cancer Center
Houston, Texas

Mark Schattner, MD

Attending Gastroenterologist
Department of Medicine, GI/Nutrition
Memorial Sloan-Kettering Cancer Center
New York, New York

Mark Schiffman, MD, MPH

Deputy Chief, Hormonal and Reproductive
Epidemiology Branch
National Cancer Institute
Rockville, Maryland

Jeanne M. Schilder, MD

Associate Professor
Department of Obstetrics and Gynecology
Division of Gynecologic Oncology
Indiana University School of Medicine
Indianapolis, Indiana

Leslie Scutt, MD

Professor of Diagnostic Radiology
Chief of Ultrasound Service
Department of Diagnostic Radiology
Yale University School of Medicine
New Haven, Connecticut

Jeffrey Seidman, MD

Director of Gynecological Pathology
Department of Pathology
Washington Hospital Center
Washington, DC

Christopher K. Senkowski, MD, FACS

Associate Professor of Surgery
Mercer University School of Medicine
Savannah Campus Memorial University Medical Center
Savannah, Georgia

Moshe Shike, MD

Director
Memorial Sloan-Kettering Cancer Prevention and Wellness Program
Department of Medicine, GI/Nutrition
Memorial Sloan-Kettering Cancer Center
New York, New York

Yukio Sonoda, MD

Assistant Attending Surgeon
Gynecology Service, Department of Surgery
Memorial Sloan-Kettering Cancer Center
New York, New York

Margaret M. Steinhoff, MD

Director
Division of Gynecologic Pathology
Women and Infants Hospital of Rhode Island
Professor of Pathology and Laboratory Medicine
The Warren Alpert Medical School of Brown University
Providence, Rhode Island

C. James Sung, MD

Director of Clinical Pathology
Women and Infants Hospital of Rhode Island
Professor of Pathology and Laboratory Medicine
The Warren Alpert Medical School of Brown University
Providence, Rhode Island

Gregory Sutton, MD

Medical Director
Gynecologic Oncology
St. Vincent Hospitals and Health Services
Indianapolis, Indiana

Charu Taneja, MD

Director
Breast Health Program
Roger Williams Medical Center
Providence, Rhode Island
Clinical Assistant Professor
Department of Surgery
Boston University Medical Center
Boston, Massachusetts

Sean Tedjarati, MD, MPH

Associate Professor
Division of Gynecologic Oncology
Texas Tech University Health Sciences Center
Amarillo, Texas

Trevor Tejada-Berges, MD

Gynecologic Oncologist and Breast Surgeon
Program in Women's Oncology
Women and Infants Hospital of Rhode Island
Assistant Professor, Obstetrics-Gynecology
The Warren Alpert Medical School of Brown University
Providence, Rhode Island

Susan Tolle, MD

Cornelia Hayes Stevens Chair
Director
Center for Ethics in Health Care
Professor of Medicine
Oregon Health and Science University
Portland, Oregon

Carmen Tornos, MD

Professor of Pathology
Stony Brook University Medical Center
Stony Brook, New York

Daniel D. Von Hoff, MD, FACP

Physician in Chief, Senior Investigator
Translational Genomics Research Institute (TGen)
Clinical Professor of Medicine
University of Arizona
Phoenix, Arizona

Lari Wenzel, PhD

Professor
College of Health Sciences
University of California, Irvine
Irvine, California

Edward J. Wilkinson, MD, FACOG, FCAP

Professor and Vice Chairman
Department of Pathology and Laboratory Medicine
University of Florida College of Medicine
Gainesville, Florida

Darcy J. Wolfman, MD

Assistant Professor
Department of Radiology
Division of Abdominal Imaging
Georgetown University Hospital
Washington, DC

Aaron Wolfson, MD

Professor and Vice Chair
Department of Radiation Oncology
Sylvester Cancer Center
University of Miami School of Medicine
Miami, Florida

Thomas C. Wright Jr, MD

Professor of Pathology
Department of Pathology
College of Physicians and Surgeons of Columbia University
New York, New York

Catheryn Yashar, MD

Assistant Professor of Radiation Oncology
Chief
Breast and Gynecologic Services
University of California, San Diego Moores Cancer Center
La Jolla, California

Robert H. Young, MD

Robert E. Scully Professor of Pathology
Harvard Medical School
Director, Surgical Pathology
Massachusetts General Hospital
Boston, Massachusetts

Richard J. Zaino, MD

Professor of Pathology
Milton S. Hershey Medical Center
Pennsylvania State University
Hershey, Pennsylvania

Kristin K. Zorn, MD

Assistant Professor
Department of Obstetrics, Gynecology, and Women's Health
Magee-Women's Hospital of the University
of Pittsburgh Medical Center
Pittsburgh, Pennsylvania

The publication of the fifth edition of *Principles and Practice of Gynecologic Oncology* marks the completion of the transition to three new editors, Richard Barakat, Maurie Markman, and Marcus Randall. As editors and cancer specialists, we are excited about the fifth edition and are honored to follow in the tradition of excellence established by our three predecessors, William J. Hoskins, MD, Carlos A. Perez, MD, and Robert C. Young, MD, who had worked together on this textbook for over 15 years. Without their guidance and friendship, this seamless transition wouldn't have been possible. We look forward to building on their important contribution to the medical literature.

We remain committed to the multidisciplinary theme of the textbook, with chapters authored by teams consisting of a surgeon, a medical oncologist, a radiation oncologist, and a pathologist. The increasing complexity of all aspects of gynecologic cancer treatment requires this type of approach. As in previous editions, we have rotated approximately 30% of the authors, and all chapters have been either completely rewritten or extensively updated, including the chapters on the three

major disease sites—ovarian, uterine, and cervical cancer—as well as breast cancer. We are certain that this edition contains the most up-to-date information available about the treatment of gynecologic cancers. This textbook was designed for specialists who care for women afflicted with gynecologic cancer, including surgeons, medical oncologists, radiation oncologists, pathologists, and nurses. It also serves as a valuable resource for residents and fellows in training for a career in cancer care.

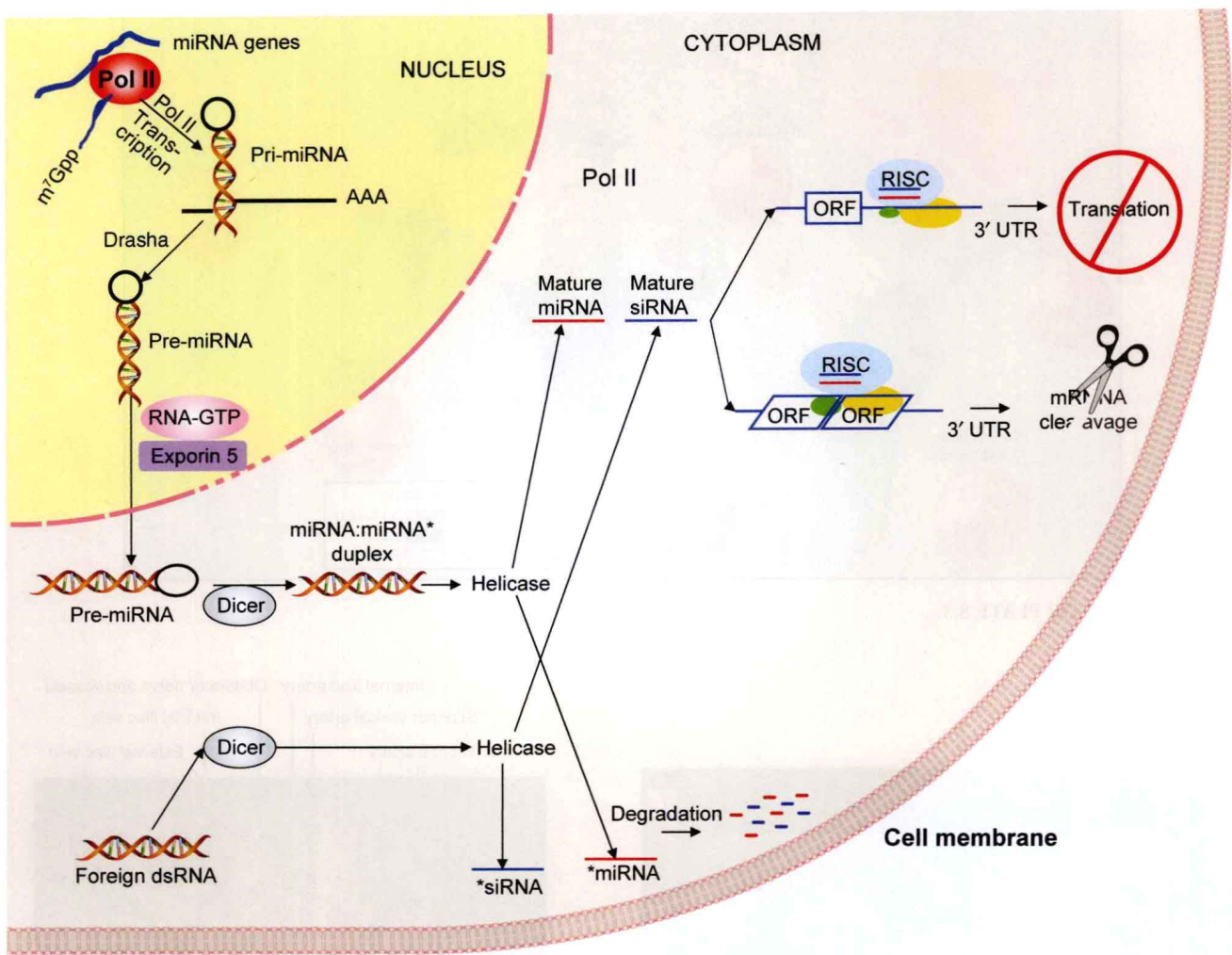
Finally, we wish to thank the readers for their support in the past and look forward to their continued support and advice in the future. We will continually strive to improve the content and quality of this comprehensive textbook. It is our hope that this textbook will play a significant role in developing future treatments to benefit women afflicted with gynecologic cancer.

Richard Barakat, MD
Maurie Markman, MD
Marcus Randall, MD

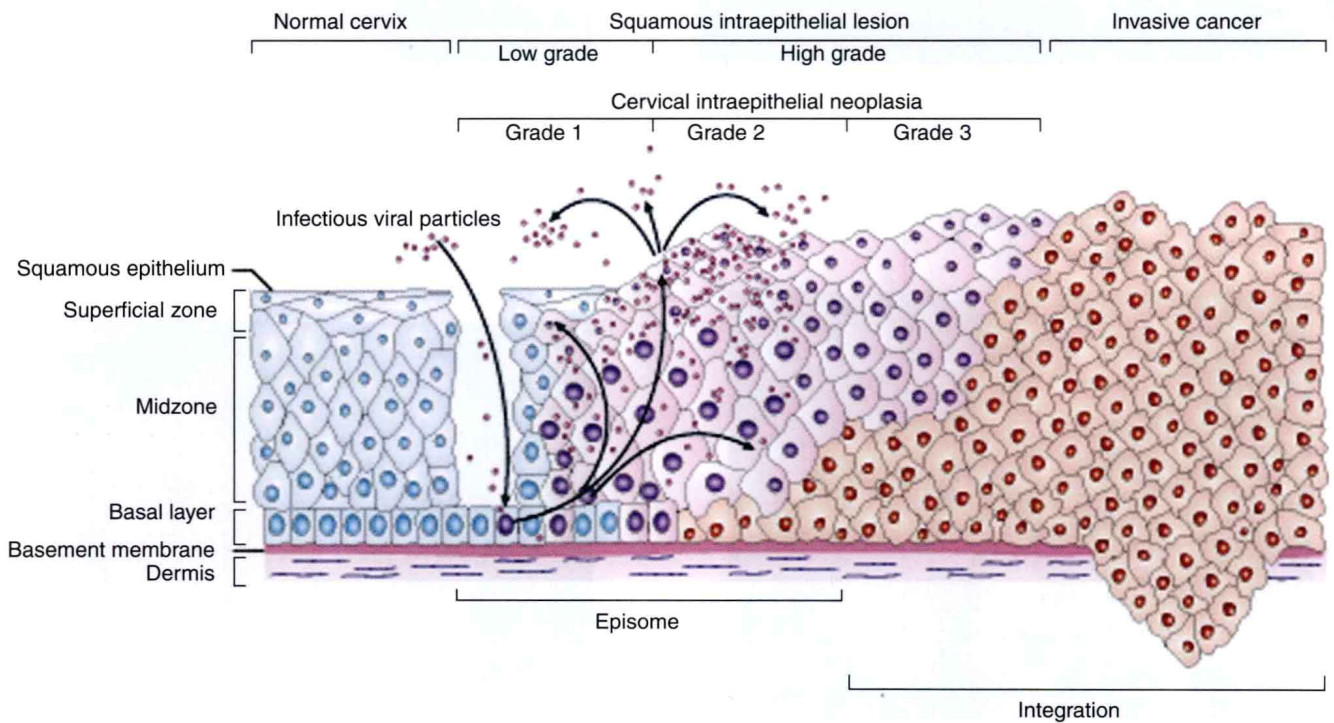
ACKNOWLEDGMENTS

The editors acknowledge the contributions of numerous individuals without whom this book would not have been possible. The talented staff of the publisher, Lippincott Williams & Wilkins, especially Jonathan Pine, senior executive editor; Joyce Murphy, associate director of content; Anne Jacobs, senior managing editor; and Paula Williams, senior project editor, provided invaluable encouragement, direction, and guidance during the creative process and in technical execution. Charu Dutt, senior project manager for International Typesetting and Composition, provided outstanding production services.

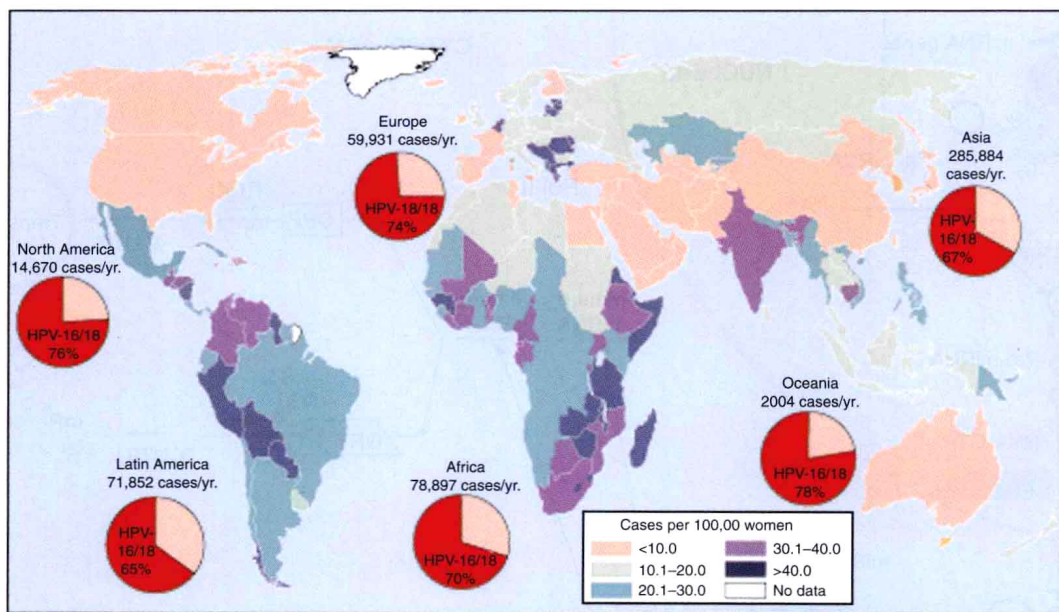
From the Gynecology & Breast Services Academic Office, Department of Surgery, Memorial Sloan-Kettering Cancer Center (MSKCC), we acknowledge the invaluable contributions of K. Alexandra MacDonald, senior editor; Jennifer Grady, assistant editor; and Shan-san Wu, assistant editor. Their attention to detail, patience, and communication skills were of the utmost importance throughout the publication process. Our appreciation for all their efforts cannot be adequately expressed, but we hope they know how much we value their contributions.



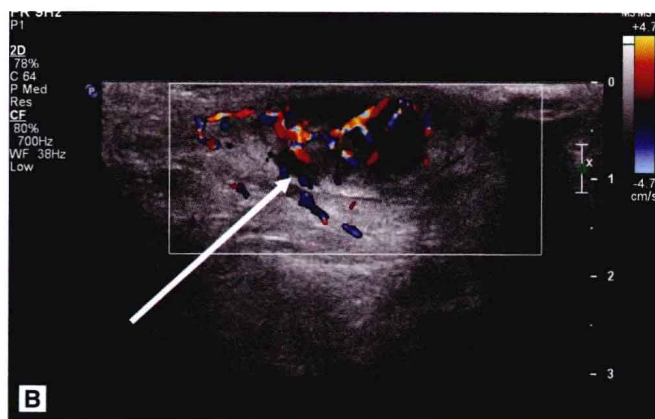
COLOR PLATE 3.10.



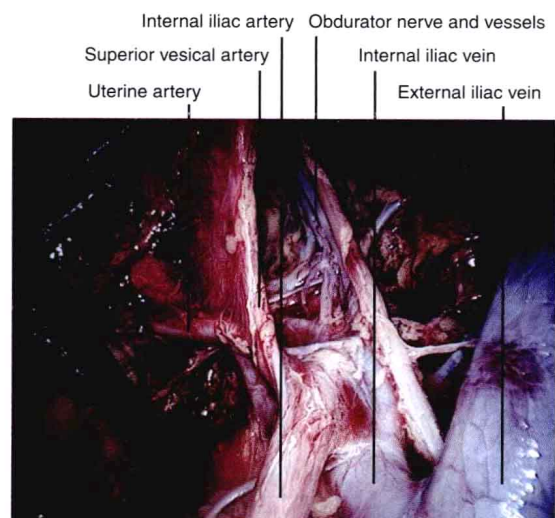
COLOR PLATE 8.4.



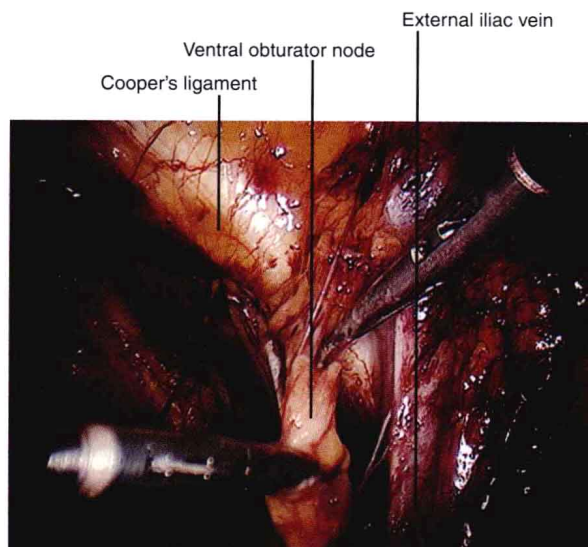
COLOR PLATE 8.5.



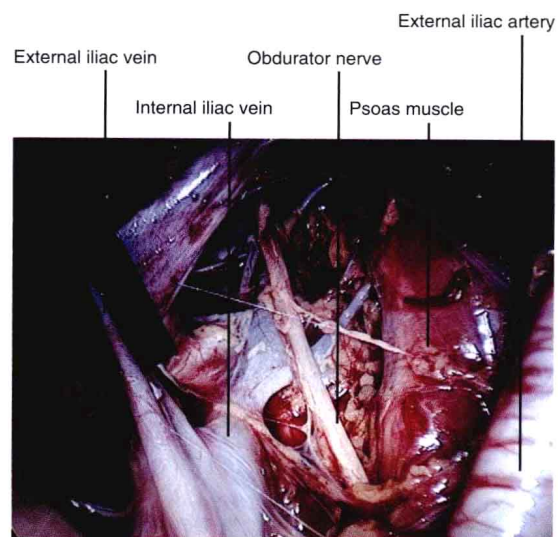
COLOR PLATE 10.39B.



COLOR PLATE 13.3.

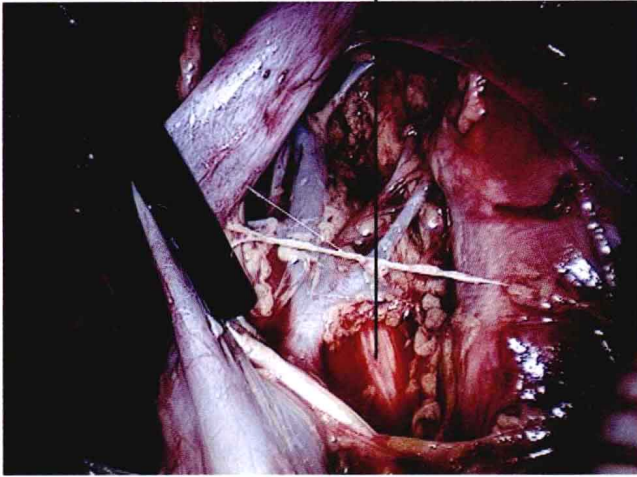


COLOR PLATE 13.2.

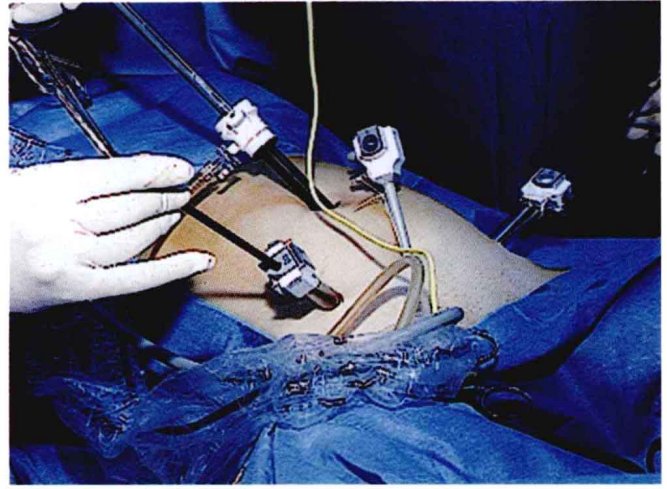


COLOR PLATE 13.4.

Lumbosacral nerve



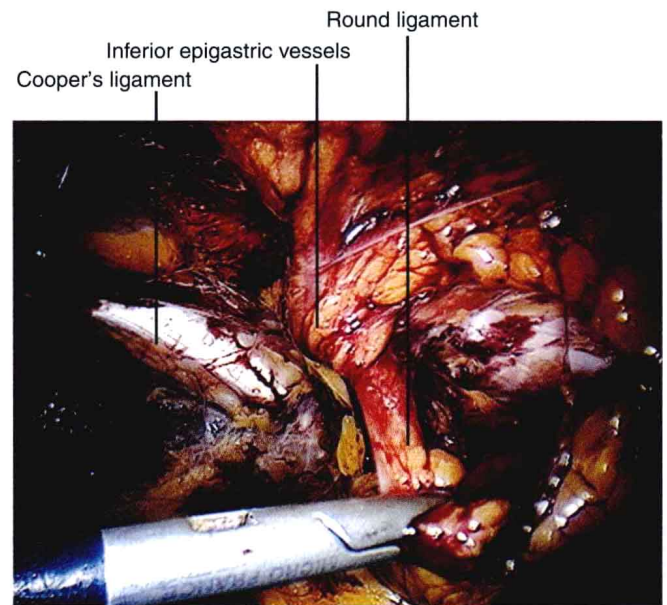
COLOR PLATE 13.5.



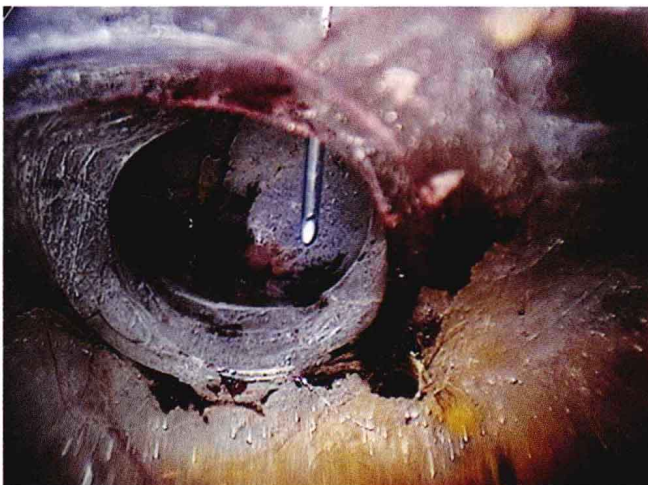
COLOR PLATE 13.8.



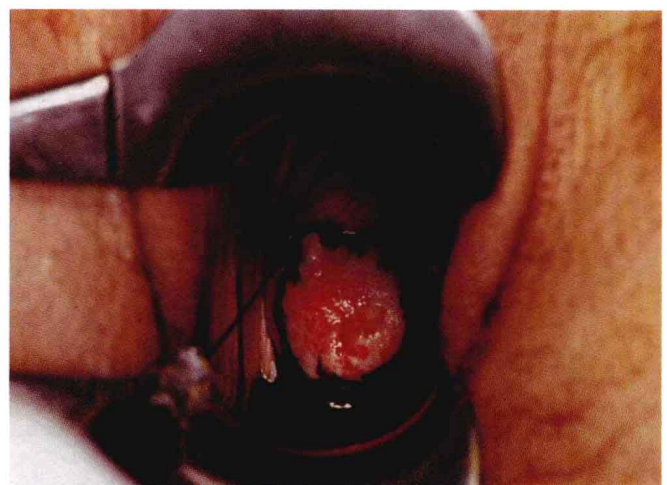
COLOR PLATE 13.6.



COLOR PLATE 13.9.



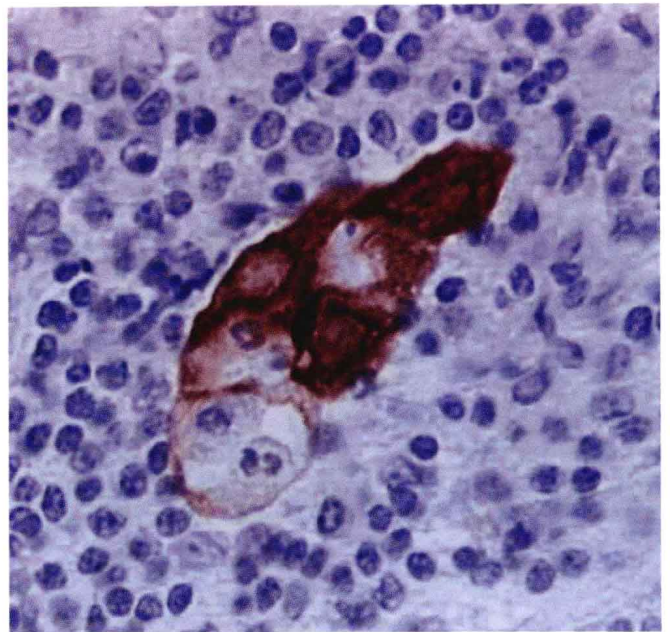
COLOR PLATE 13.7.



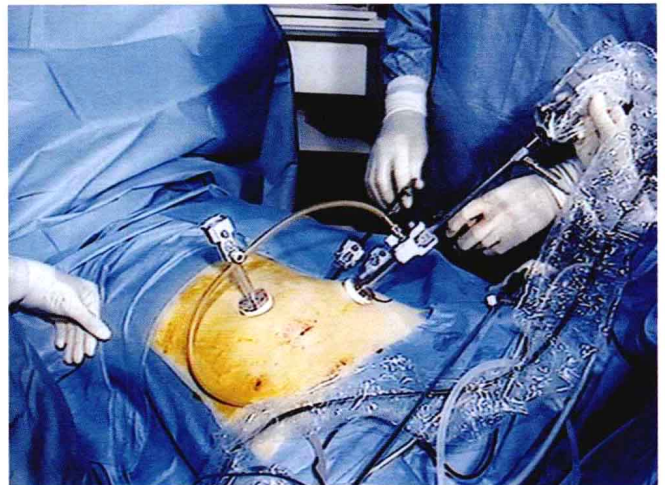
COLOR PLATE 13.10.



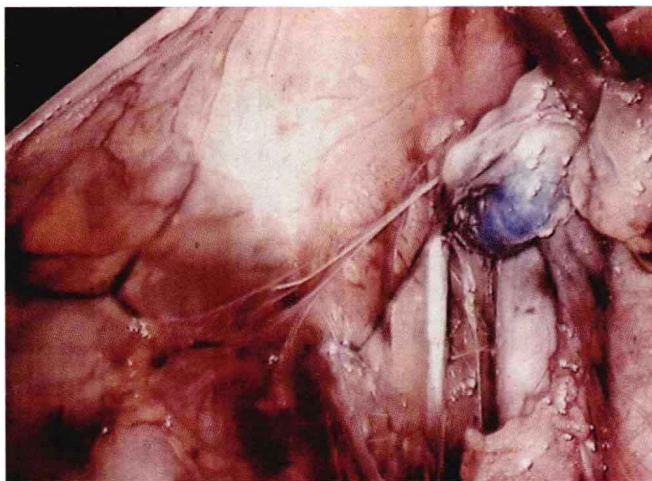
COLOR PLATE 13.11.



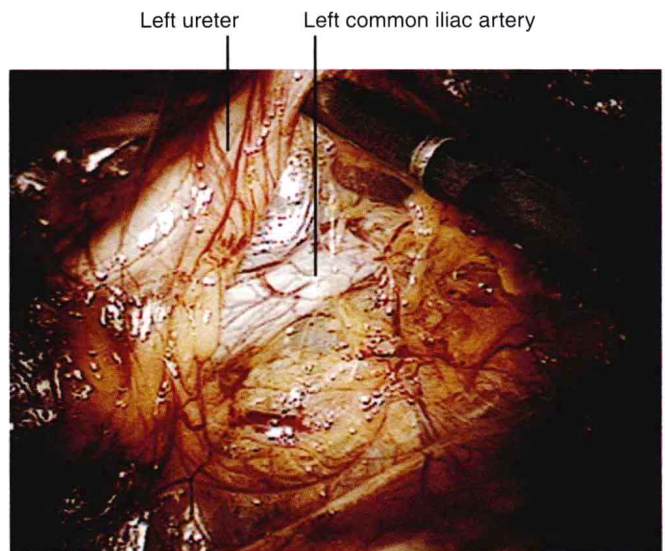
COLOR PLATE 13.14.



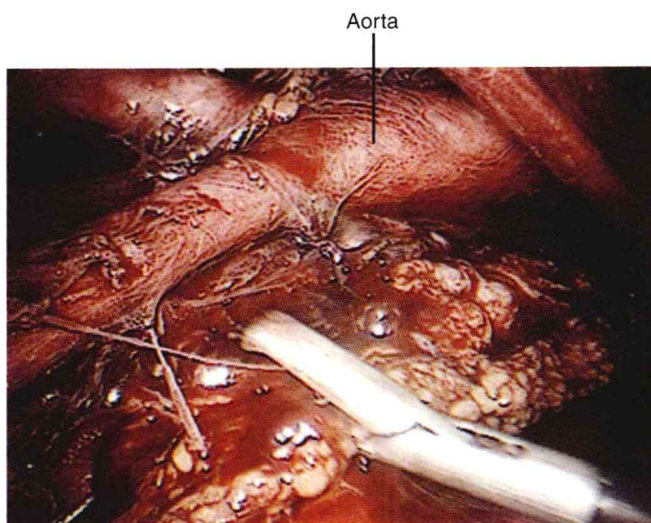
COLOR PLATE 13.15.



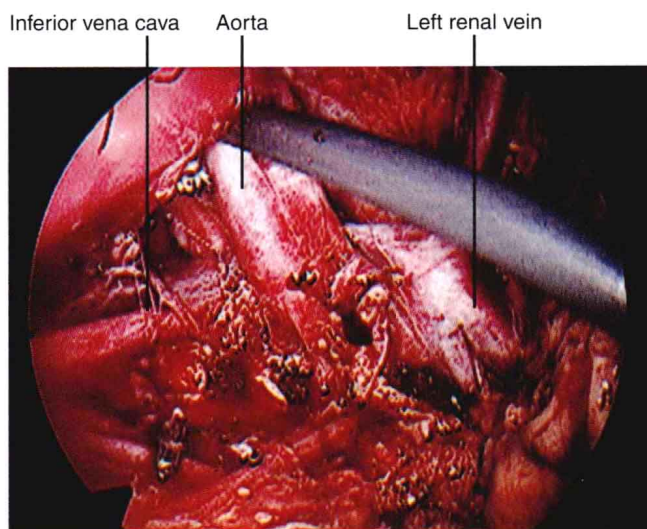
COLOR PLATE 13.12.



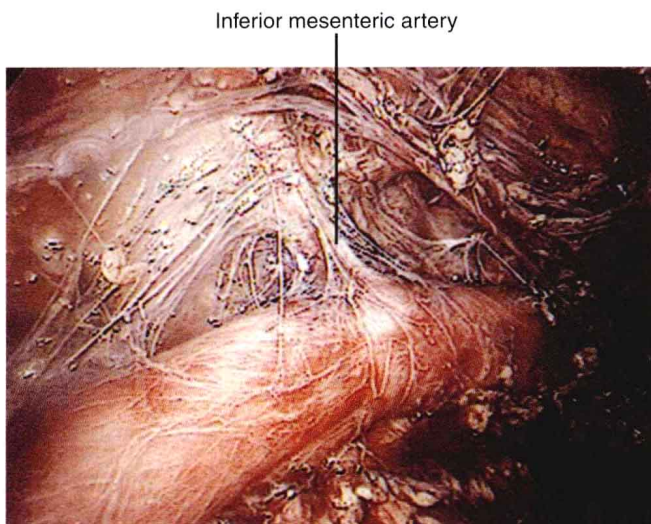
COLOR PLATE 13.16.



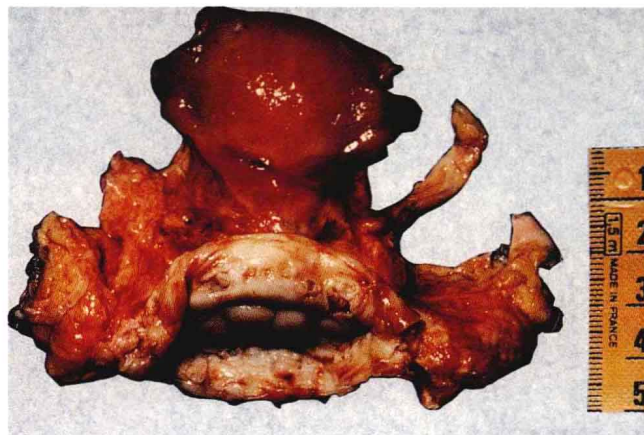
COLOR PLATE 13.17.



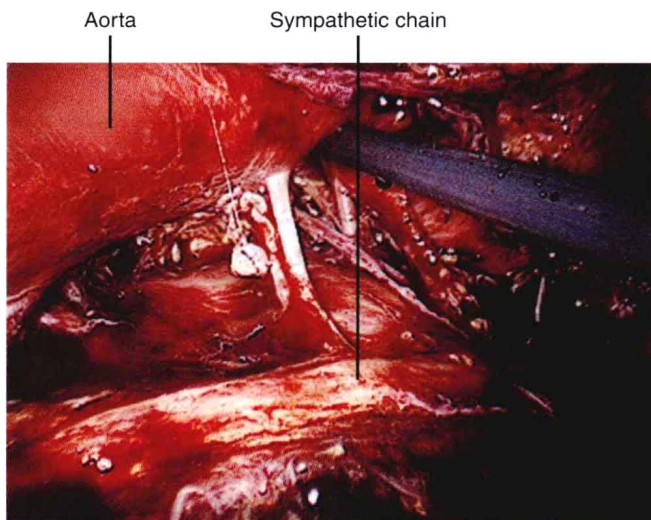
COLOR PLATE 13.20.



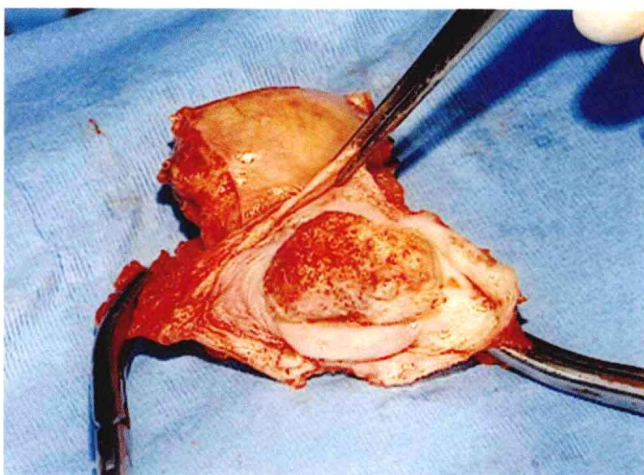
COLOR PLATE 13.18.



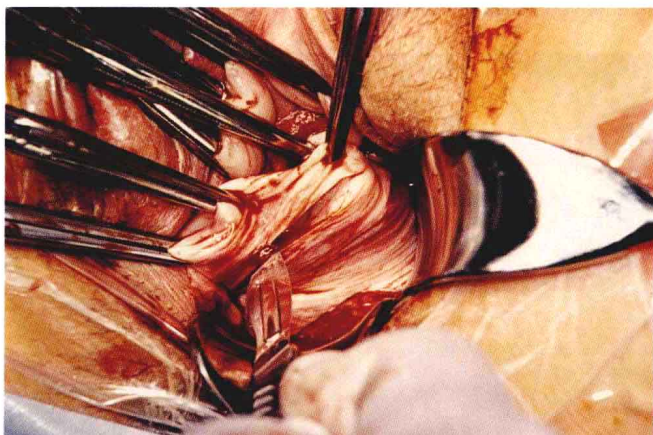
COLOR PLATE 13.21.



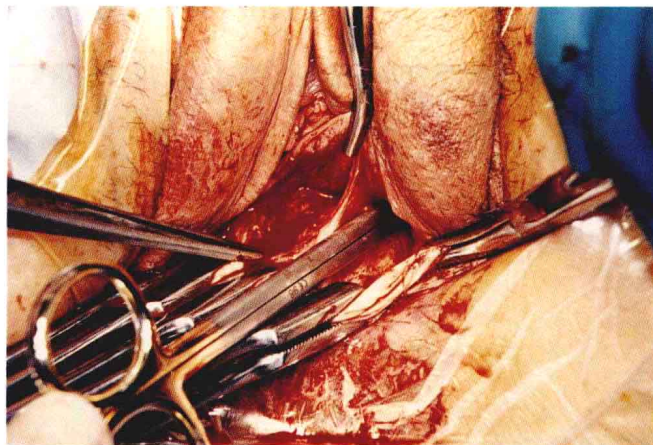
COLOR PLATE 13.19.



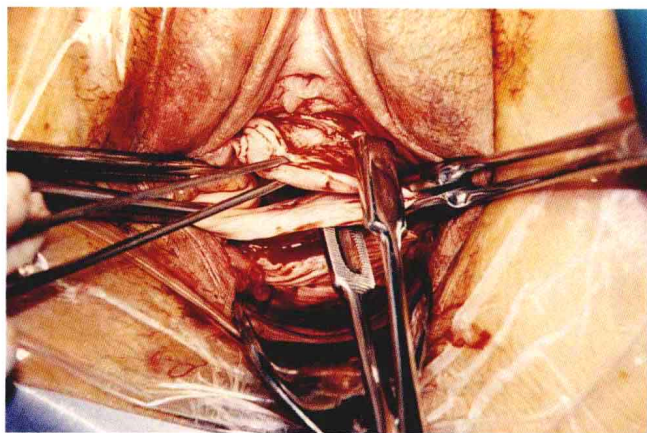
COLOR PLATE 13.22.



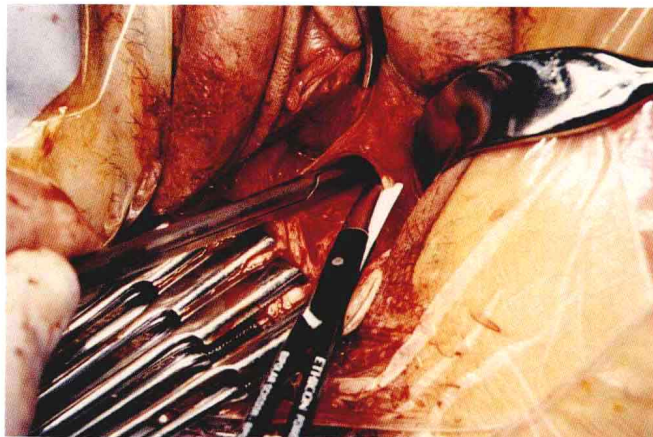
COLOR PLATE 13.23.



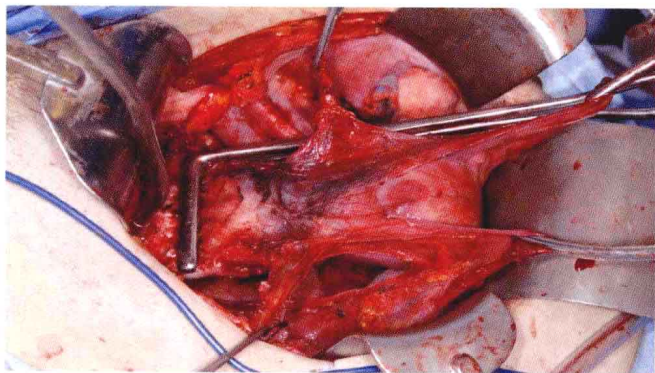
COLOR PLATE 13.26.



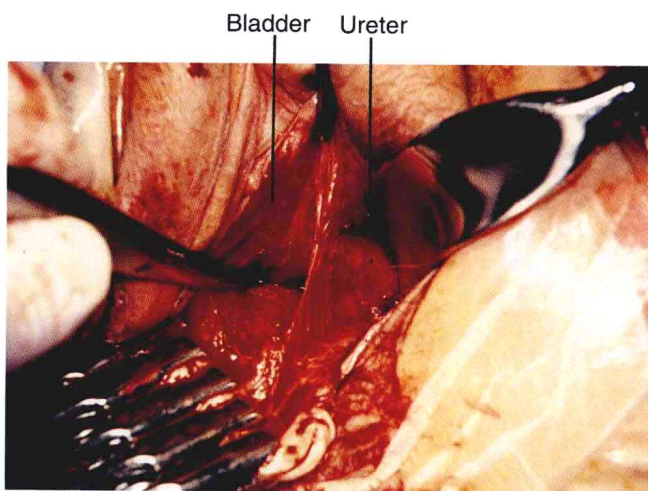
COLOR PLATE 13.24.



COLOR PLATE 13.27.



COLOR PLATE 13.25.



COLOR PLATE 13.28.