



PROCEEDINGS OF SPIE
SPIE—The International Society for Optical Engineering

Subsurface Sensors and Applications

Cam Nguyen
Chair/Editor

19–21 July 1999
Denver, Colorado

Sponsored and Published by
SPIE—The International Society for Optical Engineering



Volume 3752

SPIE is an international technical society dedicated to advancing engineering and scientific applications of optical , photonic, imaging, electronic, and optoelectronic technologies.



The papers appearing in this book comprise the proceedings of the meeting mentioned on the cover and title page. They reflect the authors' opinions and are published as presented and without change, in the interests of timely dissemination. Their inclusion in this publication does not necessarily constitute endorsement by the editors or by SPIE.

Please use the following format to cite material from this book:

Author(s), "Title of paper," in *Subsurface Sensors and Applications*, Cam Nguyen, Editor, Proceedings of SPIE Vol. 3752, page numbers (1999).

ISSN 0277-786X

ISBN 0-8194-3238-5

Published by

SPIE—The International Society for Optical Engineering

P.O. Box 10, Bellingham, Washington 98227-0010 USA

Telephone 360/676-3290 (Pacific Time) • Fax 360/647-1445

Copyright ©1999, The Society of Photo-Optical Instrumentation Engineers.

Copying of material in this book for internal or personal use, or for the internal or personal use of specific clients, beyond the fair use provisions granted by the U.S. Copyright Law is authorized by SPIE subject to payment of copying fees. The Transactional Reporting Service base fee for this volume is \$10.00 per article (or portion thereof), which should be paid directly to the Copyright Clearance Center (CCC), 222 Rosewood Drive, Danvers, MA 01923. Payment may also be made electronically through CCC Online at <http://www.directory.net/copyright/>. Other copying for republication, resale, advertising or promotion, or any form of systematic or multiple reproduction of any material in this book is prohibited except with permission in writing from the publisher. The CCC fee code is 0277-786X/99/\$10.00.

Printed in the United States of America.

Conference Committee

Conference Chair

Cam Nguyen, Texas A&M University

Program Committee

George Y. Baaklini, NASA Lewis Research Center
Frank C. Beall, University of California Forest Products Laboratory
Donald A. Bender, Washington State University
Thomas A. Blasingame, Texas A&M University
Jean-Charles Bolomey, Supélec (France)
Renato G. Bosisio, Ecole Polytechnique de Montréal (Canada)
Lawrence M. Brown, Naval Surface Warfare Center
Oral Buyukozturk, Massachusetts Institute of Technology
Lawrence Carin, Duke University
Ernesto R. Cespedes, U.S. Army Corps of Engineers
David J. Daniels, ERA Technology Ltd. (UK)
Jeffrey J. Daniels, The Ohio State University
Nancy K. DelGrande, Lawrence Livermore National Laboratory
Benjamin C. Flores, University of Texas/El Paso
Guido B. Gentili, Università degli Studi di Firenze (Italy)
Nathan Ida, University of Akron
Inam Jawed, Transportation Research Board, National Research Council
Youan Ke, National University of Singapore
Sumio Kobayashi, Sumitomo Metals Corporation (Japan)
James L. Kurtz, University of Florida
Carl A. Lenngren, National Swedish Road Administration
Yves Leroy, Université des Sciences et Technologies de Lille (France)
Steve C. Liu, National Science Foundation
Ajit K. Mal, University of California/Los Angeles
John McCorkle, OC Technologies Inc.
Devendra Misra, University of Wisconsin/Milwaukee
Rexford M. Morey, Lawrence Livermore National Laboratory
David A. Noon, University of Queensland (Australia)
Ebbe Nyfors, Multi-Fluid ASA (Norway)
Seichi Okamura, Shizuoka University (Japan)
Polycarpos Pissis, National Technical University of Athens (Greece)
Robert J. Ross, USDA Forest Service
Timo Saarenketo, Roadscanners Oy (Finland)
Motoyuki Sato, Tohoku University (Japan)
Thomas Scullion, Texas A&M University
Ari Sihvola, Helsinki University of Technology (Finland)
Pertti Vainikainen, Helsinki University of Technology (Finland)
Ferenc Völgyi, Technical University of Budapest (Hungary)
Gary J. Weil, EnTech Engineering, Inc.
Bekir S. Yilbas, King Fayd University of Petroleum and Minerals (Saudi Arabia)
Li Zhu, Huazhong University of Science and Technology (China)

Session Chairs

- 1 **Nondestructive Testing of Materials by Microwave Radiation**
Tuami Lasri, Institut d'Electronique et de Microélectronique du Nord, Université de Lille (France)
Reza Zoughi, Colorado State University
- 2 **Subsurface Techniques in Medical Imaging**
Charles A. DiMarzio, Northeastern University
- 3 **Sensors and Techniques for Detection, Location, and Classification of Subsurface Objects and Structures**
Motoyuki Sato, Tohoku University (Japan)
- 4 **Subsurface Techniques for Measurement of Moisture and Properties of Materials**
Christof Huebner, Universität Karlsruhe (Germany)
- 5 **Subsurface Sensors for Evaluation of Underground Objects and Structures**
David A. Noon, University of Queensland (Australia)
- 6 **Subsurface Sensing Techniques for Detection, Location, and Classification of Buried Objects**
David A. Noon, University of Queensland (Australia)
- 7 **Subsurface Sensing Systems and Techniques for Different Scientific and Engineering Applications I**
Barry J. Cown, SATIMO, Inc.
Ferenc Völgyi, Technical University of Budapest (Hungary)
- 8 **Subsurface Sensing Systems and Techniques for Different Scientific and Engineering Applications II**
Seichi Okamura, Shizuoka University (Japan)
- 9 **Signal and Data Processing for Subsurface Sensing Techniques**
Shawn D. Hunt, University of Puerto Rico/Mayagüez
- 10 **Subsurface Sensor Components and Their Applications**
Tiberiu Visan, Ecole Polytechnique de Montréal (Canada)
- 11 **Subsurface Sensing Systems and Technologies for Detection, Location, and Identification of Mines and Mine-like Objects**
David J. Daniels, ERA Technology Ltd. (UK)
Bertrand Bocquet, Institut d'Electronique et de Microélectronique du Nord, Université de Lille (France)

Introduction

On behalf of SPIE and the Conference Program Committee, I am very pleased to present to you the proceedings of our first international Conference on Subsurface Sensors and Applications.

The goal of this new Subsurface Sensors and Applications conference is to serve as an international forum for reporting advances and progress in the research and development of subsurface sensing technologies and their applications in many scientific and engineering disciplines. We plan to cover all areas of subsurface sensing technologies, such as radar, interferometer, ultrasonics, acoustics, microwave, millimeter-wave, submillimeter-wave, infrared, optics, etc. Included are existing as well as new emerging applications for different scientific and engineering areas, such as nondestructive testing, medicine, biological sciences, forestry, communications, law enforcement, civil engineering, agriculture, environment, geology, construction, railroads, maritime structures, archeology, petroleum, chemistry, food, surface metrology, unexploded ordnance and mines, mining, utilities, industrial process monitoring, drying, materials, and radio-frequency identification. All theoretical and practical aspects of subsurface sensing, including systems, subsystems, antennas, circuits, signal and data processing and modeling, target modeling, propagation and interaction of sensing signals in media, material evaluation, subsurface sensing applications, and related topics are covered.

Information relating to subsurface sensing technologies and applications are scattered in a number of different conferences and journals in various scientific and engineering disciplines. Many engineers, researchers, manufacturers, and users are involved in these technologies, but there is no single central source for them. It is hoped that this annual conference will bring all the research and activities relating to subsurface sensing technologies and applications to one unique source.

In this first conference, Prof. Michael Silevitch opened the technical sessions with a keynote address on subsurface sensing and imaging. This was followed by papers from varying disciplines such as nondestructive testing, medical imaging, detection of subsurface objects, microwave aquametry, mine detection, railroad monitoring, signal and data processing, and sensor components. These contributions not only demonstrate the success of this conference, but also reflect its broad scope.

The second Conference on Subsurface Sensors and Applications will take place during the week of 30 July–4 August 2000 in San Diego, California. I would like to invite your participation in this event to make it even more successful. I wish to express my sincere thanks and appreciation to all the participants, without whom this conference would have not been a success.

Cam Nguyen

Contents

vii	<i>Conference Committee</i>
ix	<i>Introduction</i>

KEYNOTE ADDRESS

2	Common framework of subsurface sensing and imaging [3752-01] M. B. Silevitch, S. W. McKnight, C. M. Rappaport, Northeastern Univ.
---	---

SESSION 1 NONDESTRUCTIVE TESTING OF MATERIALS BY MICROWAVE RADIATION

12	Dielectric properties of concrete at S and X bands: a near-field investigation [3752-03] K. J. Bois, A. D. Benally, Colorado State Univ.; P. S. Nowak, Gonzaga Univ.; R. Zoughi, Colorado State Univ.
19	Portable permittivity probe [3752-04] F. Thompson, Univ. of Manchester Institute of Science and Technology (UK)
29	Microwave sensors for nondestructive testing of materials [3752-05] T. Lasri, D. Glay, A. Mamouni, Y. Leroy, Institut d'Electronique et de Microélectronique du Nord, Univ. de Lille (France)
39	RF and microwave instrumentation for moisture measurements in process and civil engineering [3752-06] K. Kupfer, Bauhaus-Univ. Weimar (Germany)
47	Moisture measurement of timber using microwave attenuation at two frequencies [3752-07] S. Okamura, Y. Zang, Shizuoka Univ. (Japan); T. Kurematsu, Kawasaki Kikoh Inc. (Japan)
53	Detection of subsurface water content of eggs using bistatic microwave sensors [3752-08] F. Völgyi, Technical Univ. of Budapest (Hungary)

SESSION 2 SUBSURFACE TECHNIQUES IN MEDICAL IMAGING

62	Multiply constrained cardiac electrical imaging methods (Invited Paper) [3752-09] D. H. Brooks, K. G. Srinidhi, Northeastern Univ. and Univ. of Utah; R. S. MacLeod, Univ. of Utah; D. R. Kaeli, Northeastern Univ.
72	Hyperspectral imaging for dermal hemoglobin spectroscopy [3752-11] P. J. Dwyer, Massachusetts General Hospital; C. A. DiMarzio, Northeastern Univ.
83	Interaction of diffusive waves and ultrasound [3752-13] T. J. Gaudette, Massachusetts General Hospital; C. A. DiMarzio, D. J. Townsend, Northeastern Univ.

- 90 **Numerous applications of fiber optic evanescent wave Fourier transform infrared (FEW-FTIR) spectroscopy for subsurface structural analysis [3752-14]**
N. I. Afanasyeva, L. Welser, R. F. Bruch, A. Kano, V. Makhine, Univ. of Nevada/Reno

SESSION 3 SENSORS AND TECHNIQUES FOR DETECTION, LOCATION, AND CLASSIFICATION OF SUBSURFACE OBJECTS AND STRUCTURES

- 104 **Polarimetric borehole radar measurement at the Mirror Lake test site [3752-16]**
M. Sato, M. Takeshita, Tohoku Univ. (Japan); T. Miwa, Univ. of Electro-Communication (Japan); J. W. Lane, Jr., U.S. Geological Survey
- 113 **High-Tc superconducting magnetic sensor for detection of subsurface structures [3752-17]**
T. R. Clem, Naval Surface Warfare Ctr.
- 125 **Development of silicon microcapacitive accelerometer for seismic measurement [3752-18]**
M. Nishizawa, Tohoku Univ. (Japan); G. Lim, Samsung Advanced Institute of Technology (Korea); H. Niitsuma, M. Esashi, Tohoku Univ. (Japan)

SESSION 4 SUBSURFACE TECHNIQUES FOR MEASUREMENT OF MOISTURE AND PROPERTIES OF MATERIALS

- 134 **Moisture monitoring with subsurface transmission lines [3752-22]**
A. Brandelik, C. Huebner, Univ. Karlsruhe (Germany)
- 146 **Microwave dielectric properties of wooden cross-arms [3752-23]**
K. Khalid, M. H. Sahri, N. K. Keong, Univ. Putra Malaysia; S. A. Fuad, Tenaga National Research & Development (Malaysia)
- 157 **Dielectric properties of contaminated soil [3752-24]**
Y. Huang, M. T. C. Fang, Univ. of Liverpool (UK); V. T. Nguyen, Shell Research Ltd. (UK); A. Eriksen, Geo-Service International, Ltd. (UK)

SESSION 5 SUBSURFACE SENSORS FOR EVALUATION OF UNDERGROUND OBJECTS AND STRUCTURES

- 166 **Ground-penetrating radar: use and misuse [3752-26]**
G. R. Olhoeft, Colorado School of Mines
- 174 **Novel subsurface imaging system [3752-27]**
I. Zuykov, W. Olejnik, Environmental Investigations Corp.; A. E. Martens, Upstate CTC

SESSION 6 SUBSURFACE SENSING TECHNIQUES FOR DETECTION, LOCATION, AND CLASSIFICATION OF BURIED OBJECTS

- 184 **Polarimetric processing techniques for coherent stepped-frequency ground-penetrating radar systems: applications toward detection of buried utilities [3752-30]**
R. M. Narayanan, R. T. Becker, Univ. of Nebraska/Lincoln; M. B. Bashforth, GeoRadar Inc.

- 195 **Experimental investigation of buried objects by microwave tomography method [3752-31]**
A. A. Vertiy, S. P. Gavrilov, TUBITAK-Marmara Research Ctr. (Turkey), Institute of Radiophysics and Electronics (Ukraine), and Concern Nauka (Ukraine); B. Tansel, TUBITAK-Marmara Research Ctr. (Turkey); I. Voynovskyy, Concern Nauka (Ukraine)

SESSION 7 SUBSURFACE SENSING SYSTEMS AND TECHNIQUES FOR DIFFERENT SCIENTIFIC AND ENGINEERING APPLICATIONS I

- 208 **Embedded modulating dipole scattering for near-field microwave inspection of concrete: preliminary investigations [3752-33]**
A. Joisel, Supélec (France); K. J. Bois, A. D. Benally, Colorado State Univ.; J.-C. Bolomey, Supélec (France); R. Zoughi, Colorado State Univ.
- 215 **Time-division displacement pattern measurement of vibration surface by using stroboscopic holography [3752-37]**
M. Taniguchi, T. Tsuchiya, Meijo Univ. (Japan); T. Takagi, Tohoku Bunka Gakuen Univ. (Japan)
- 224 **C-band tomography system for imaging of cylindrical objects [3752-39]**
A. A. Vertiy, S. P. Gavrilov, TUBITAK-Marmara Research Ctr. (Turkey) and Institute of Radiophysics and Electronics (Ukraine); T. Adigüzel, TUBITAK-Marmara Research Ctr. (Turkey); I. Voynovskyy, TUBITAK-Marmara Research Ctr. (Turkey) and Institute of Radiophysics and Electronics (Ukraine); G. Yüceer, A. O. Salman, TUBITAK-Marmara Research Ctr. (Turkey)

SESSION 8 SUBSURFACE SENSING SYSTEMS AND TECHNIQUES FOR DIFFERENT SCIENTIFIC AND ENGINEERING APPLICATIONS II

- 232 **Broadband sensor system and technique for detection and classification of targets and subsurface targets [3752-41]**
G.-I. Goo, Morgan State Univ.
- 243 **Railroad track monitoring using ground-penetrating radar: simulation study and field measurements [3752-43]**
R. M. Narayanan, C. J. Kumke, Univ. of Nebraska/Lincoln; D. Li, Transportation Technology Ctr., Inc.
- 252 **Electromagnetic location system for trapped miners [3752-44]**
N. H. Nessler, Univ. of Innsbruck (Austria)
- 264 **Thermal infrared remote sensing of geothermal resource [3752-46]**
F. Yang, Z. Han, T. Jiang, Y. Li, C. Gong, Shandong Institute of Mining and Technology (China)

SESSION 9 SIGNAL AND DATA PROCESSING FOR SUBSURFACE SENSING TECHNIQUES

- 274 **Physics-based modeling and inverse scattering for detection of buried mine-shaped anomalies [3752-47]**
C. M. Rappaport, E. L. Miller, Northeastern Univ.
- 285 **Laser-induced acoustic detection of shallow-buried objects [3752-48]**
L. Wen, C. A. DiMarzio, S. W. McKnight, Northeastern Univ.; R. A. Roy, Boston Univ.
- 292 **SAR point spread signals and Earth surface property characteristics (Invited Paper) [3752-49]**
D. Rodríguez, Univ. of Puerto Rico/Mayagüez

- 307 **Near-infrared (NIR) emitter/detector probe for sensing buried objects and land mines** [3752-50]
G. H. Miller, Oak Ridge National Lab.; S. C. Culbertson, Oak Ridge National Lab. and Univ. of Tennessee/Knoxville; J. Mobley, Oak Ridge National Lab.; C. A. DiMarzio, Northeastern Univ.; T. Vo-Dinh, Oak Ridge National Lab. and Univ. of Tennessee/Knoxville
- 314 **Spectral partitioning in diffraction tomography** [3752-51]
S. K. Lehman, D. H. Chambers, J. V. Candy, Lawrence Livermore National Lab.
- 326 **Synthetic aperture processing of electromagnetic sounding in conductive media** [3752-53]
M. Gershenson, Naval Surface Warfare Ctr.
- 333 **Surface roughness effects in simulation of mine signals using a focused-array GPR system** [3752-54]
H. R. Raemer, C. M. Rappaport, E. L. Miller, Northeastern Univ.

SESSION 10 SUBSURFACE SENSOR COMPONENTS AND THEIR APPLICATIONS

- 346 **Six-port engineering applied to signal comparators** [3752-58]
Y. Xu, R. G. Bosisio, Ecole Polytechnique de Montréal (Canada)
- 355 **35-GHz 6-port receiver for radar applications** [3752-59]
C. G. Diskus, A. Stelzer, C. Gamsjäger, K. Lübke, E. Kolmhofer, H. W. Thim, Johannes Kepler Univ. Linz (Austria)
- 366 **Prediction of radiation pattern of a buried leaky coaxial cable** [3752-60]
N. Blaunstein, Ben-Gurion Univ. of the Negev (Israel); Z. Dank, M. Zilbershtein, Magal Security Systems Ltd. (Israel)
- 379 **Tapered slot antenna array for stepped-frequency radar** [3752-61]
Y. Huang, Univ. of Liverpool (UK)

SESSION 11 SUBSURFACE SENSING SYSTEMS AND TECHNOLOGIES FOR DETECTION, LOCATION, AND IDENTIFICATION OF MINES AND MINE-LIKE OBJECTS

- 390 **System design of radar for mine detection (Invited Paper)** [3752-63]
D. J. Daniels, ERA Technology Ltd. (UK)
- 402 **Army Research Laboratory land mine and unexploded ordnance experiments and results** [3752-64]
K. A. Kappra, M. A. Ressler, L. H. Nguyen, T. T. Ton, Army Research Lab.
- 414 **Sensor fusion for the detection of land mines** [3752-65]
M. Fritzsche, O. Löhlein, Daimler-Chrysler AG (Germany)
- 425 **Classification of buried objects based on ground-penetrating radar measurements and multiple test procedures** [3752-68]
H. O. Brunzell, The Ohio State Univ.
- 435 *Addendum*
- 437 *Author Index*

Keynote Address

A Common Framework of Subsurface Sensing and Imaging

M. B. Silevitch*, S. W. McKnight, and C. Rappaport

Center for Subsurface Sensing and Imaging Systems (CenSSIS)
Northeastern University, Boston, MA 02115

ABSTRACT

Subsurface sensing and imaging problems arise in a variety of contexts: underground, underwater, inside the human body, and inside a cell or a collection of cells. All of these problems require reconstruction of internal structures or functions from a highly distorted probe or wave sampled outside of an obscuring surface. There is an emerging common framework of physics-based signal processing which will allow progress in any of these areas to be applied to create advances in the other areas. The recognition of the essential similarity of these problems and the development of the common framework is a key to the next generation of environmental and biomedical imaging systems.

Keywords: Subsurface sensing and imaging, tomography, inverse problems, underground, underwater, and medical imaging, 3D microscopy.

1. INTRODUCTION

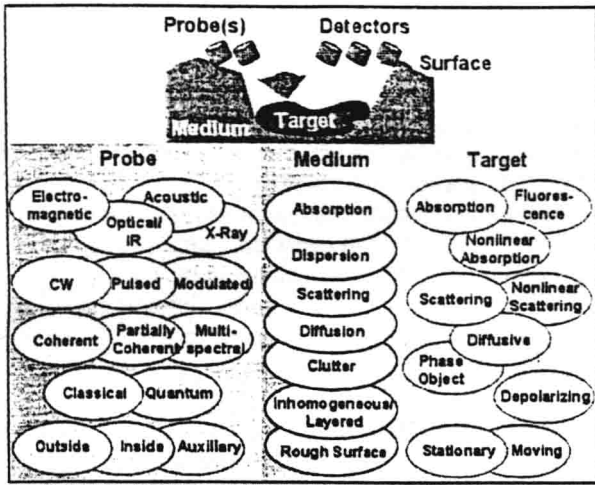
The problem of imaging under a surface arises in a wide variety of contexts, and these problems are among the most difficult and intractable system challenges known. Spread one hundred plastic landmines on top of a farmer's field and they can be safely removed in hours by a worker with a minimum of training. Bury them under one centimeter of soil, and you have a problem that has been the subject of intensive research for over half a century and remains far from solved. State-of-the-art inductive sensors in the hands of an experienced operator can detect non-metallic mines from the signal received from the firing pin and other small metal parts. In typical operation, however, over 300 false alarms are recorded for every mine identified, each requiring lengthy and delicate examination. In the end, operational mine detection systems have little, if any, advantage over probing each square centimeter of the ground with a titanium rod, a process that can clear a field at a rate of 1 meter by 25 meters of ground per person per day. No one has any idea how the three million landmines buried in Bosnia or the 10 million in Cambodia can be removed at any reasonable cost.¹

De-mining, in common with nearly all subsurface sensing and imaging problems, is an *information* problem. If we knew where the mines were buried, world-wide humanitarian de-mining would require relatively few physical resources. Yet in an Information Age, when the cost of computation and communications is reduced by a sizable fraction each year, the full potential of applying our exponentially expanding information technology sector to subsurface problems has not been realized because of lack of equivalent progress in subsurface detection and identification.

In addition to the technical problems of probes and processing that we will discuss below, we identify two major systems obstacles to progress in subsurface sensing and imaging:

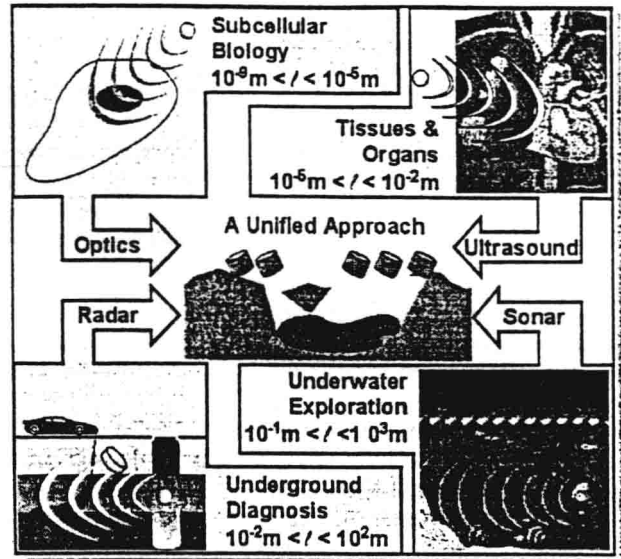
- 1) the problems of sensor design, modeling, image processing, and recognition have been compartmentalized, viewed as separate disciplines rather than as integrated parts of a *system* optimization problem.
- 2) the subsurface problems in different media and different length scales are commonly viewed as unrelated problems and addressed with *ad hoc* solutions. Lessons learned in one subsurface technology are rarely applied to other problems, and no overarching theory exists to identify fundamental limitations, predict what can be detected and the optimal way to do it.

* E-mail: msilevit@lwnx.neu.edu; CenSSIS Tel. (617)373-5110; WWW: <http://www.censsis.neu.edu>



NU-011

Figure 1. Subsurface problems can be classified on the basis of the probe-medium-target interactions.



NU-001

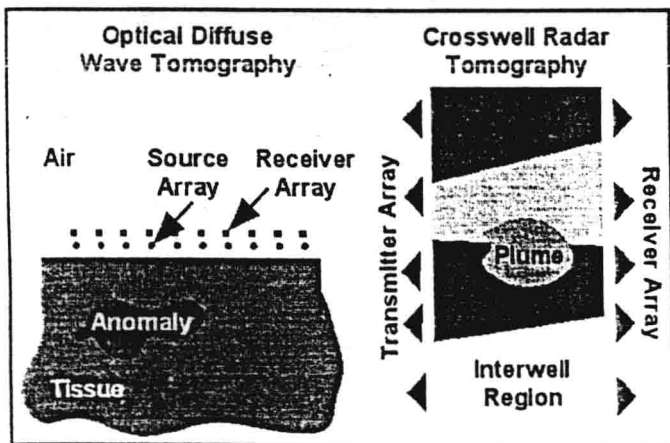
Figure 2. A unified physics-based approach can unite subsurface problems from many domains at different length scales.

The subsurface sensing and imaging problem is to extract information about a subsurface target from scattered and distorted waves received above the surface. Imaging techniques, whether ultrasound sensors in tissue or electromagnetic probes in soil, can be described by the properties of probe wave, the wave propagation characteristics of the medium and surface, and the nature of target/probe interaction as shown in Figure 1.

The framework of Figure 1 describes not only underground imaging, but also underwater imaging, medical imaging inside the body, and 3D biological microscopies inside a cell or collection of cells. A unified theory of subsurface sensing and imaging, as illustrated in Figure 2, should encompass all of these applications and permit progress in one domain to be transparently applied in other domains with similar elements in the taxonomy of Figure 1.

For example, diffusive wave optical imaging for medical diagnosis and crosswell radar/EMI tomography for geophysical exploration both involve extracting an image of, or information about, anomalous regions (e.g., diabetic lesions under the skin or oil-bearing rock formations under the ground; see Figure 3). Although the problems occur on vastly different length scales, both require solution of the frequency-domain diffusion equation in the presence of an inhomogeneous, layered medium, and a need to filter large data sets from multiple transmitters and receivers that are, nevertheless, sparse compared to the information set sought.

Attacking these two problems within the same framework allows the synergy of the two solutions to be exploited. Thus, even the critical differences between the two problems (lossy vs. lossless propagation, Poisson vs. Gaussian noise statistics, the diffusion equation as a limit of the radiative transfer equation vs. the diffusion equation derived by neglecting the displacement current in Maxwell's Equations) become a basis for more complete understanding of the unified problem, rather than just an obstacle to applying the same specialized algorithm to each problem.



NU-014

Figure 3. The physical/mathematical framework of diverse problems can be very similar.

2. PHYSICS-BASED SIGNAL PROCESSING

It is rarely the case that we cannot get any information from the subsurface region. The concealing media, while not transparent, can usually be penetrated to a considerable depth by a variety of acoustic and electromagnetic wave probes. The problem is that the target signal is distorted by complex absorption, dispersion, diffraction, and refraction of the wave through the media and obscured by surface reflection, subsurface clutter, and scattered energy from unknown inhomogeneities on many scales. The signal received, y , depends on the target information x and various signal-dependent clutter and nuisance parameters z through the function C which describes the physics of the probe-wave generation, propagation, and target and clutter interaction:

$$y = C(x, z) + n \quad (1)$$

The inverse problem of un-encoding the signature of the target object x from the received signal y in the presence of unpredictable clutter signals due to z and noise, n , is the challenge of subsurface sensing and imaging.

Since the mapping from the target to the sensor depends on unknown information about the subsurface media and target, the inversion from the scattered wave to the target properties is a nonlinear mathematical problem.^{2,3} The use of appropriate physical models of the probe/surface/media/target/receiver interaction (C in Equation 1) to assist in the solution of that inverse problem is what is referred to as physics-based signal processing (PBSP). PBSP has been identified in a seminal 1998 review article as a key to progress in image formation in complex media.⁴ Physics-based reasoning through the entire image understanding process and goal-directed processing will produce algorithms which are robust to modeling errors and generate accurate reconstructions of the critical information.

The fundamental problem of subsurface sensing and imaging is to differentiate the target of interest from irrelevant clutter and scatter, to distinguish a landmine from roots, stones, shell-casing, or ground-surface reflections. In the pulse-reflection ground-penetrating radar (GPR) simulation in Figure 4, for example, the signal from the plastic cylinder in the lower figure is obscured by the rough-surface reflection in the upper figure. The task is to extract the signal from the complex scattered field of random surface irregularities. In principle, if the surface profile and the soil dielectric properties were precisely known, one could subtract the background from the received signal to extract the target signature, but a full 3D calculation of the scattered field for a single pulse could take on the order of 10 hours on a 450 MHz desktop Pentium computer. Problems where the target distinguishing features are comparable to the clutter size, such as demining, are among the most challenging subsurface problems that exist.

One of the primary differentiating features is *shape*. Since resolution in the far-field is limited to order of the wavelength, it is desirable to use probes with wavelengths smaller than the size of identifying features. Unfortunately in most subsurface modalities, absorption increases with increasing frequency (smaller wavelengths). For example, the attenuation of medical ultrasound increases at the rate of 1dB/cm for every megahertz of frequency. Arterial plaque, which can be resolved by inserting catheters containing 30 MHz ($\lambda = 50 \mu\text{m}$) ultrasonic probes, cannot be noninvasively imaged from outside the body because the

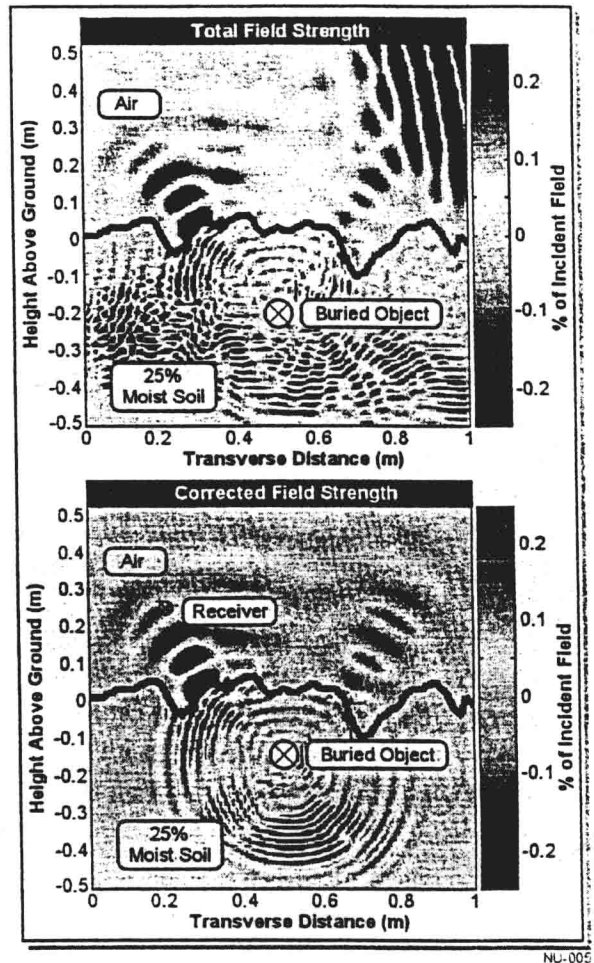


Figure 4. Clutter from rough-surface reflection in the top frame obscures the signature of the buried object in the bottom frame in this pulse GPR simulation.

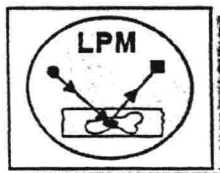
attenuation is too severe (about 30 dB per centimeter of depth at 30 MHz). This range-resolution trade-off is a fundamental limitation on many subsurface modalities including underground seismic imaging and underwater sonar imaging.

Alternatively, probes which are sensitive to target *material properties*, such as to material spectral response (color), conductivity, or magnetic susceptibility, can offer advantages for target differentiation. For example, medical imaging probes such as magnetic resonance imaging or nuclear medicine molecular tags which are sensitive to target chemistry can be used to differentiate targets on the basis of *physiology* (functioning) instead of *anatomy* (structure). Imaging the subtle physiological differences between cancerous cells and normal cells would be a medical breakthrough.

Nonlinear material properties are used for subsurface discrimination in two-photon microscopy^{5,6,7} or ultrasonic harmonic imaging. Harmonic imaging can yield diagnostically useful information on the 25% to 30% of the population that cannot be imaged well by ultrasound due to high clutter levels, distortions, and artifacts. Although harmonic imaging is already commercially available, the physical mechanisms behind it are poorly understood.

3. INFORMATION EXTRACTION STRATEGIES

Despite the bewildering variety of imaging modalities and techniques covered in the Figure 1 taxonomy, subsurface problems can be organized into a relatively small number of *information extraction strategies* which use similar algorithmic tools. Three broad information extraction strategies are discussed here.



Localized probing and mosaicking (LPM) concentrates the probe wave on a local subsurface region by focusing or time-gating and then assembles these individual pieces of information into an information mosaic. Common to these techniques are problems of concentration, aberration, and

registration which may use tools as simple as a lens or as complex as three-dimensional image matching and reconstruction. For example, medical reflection ultrasound and confocal microscopy both collect scattered energy from a subsurface target voxel. In both cases, precise focusing assumes a uniform homogeneous wave velocity, rarely the case in subsurface imaging, and resulting aberrations impede accurate imaging. LPM techniques are subject to obstruction by opaque objects (e.g., bones), and because reflection geometries are sensitive to high spatial frequencies (interfaces) LPM techniques are poor at detecting low-contrast or phase-only objects.

Wide-scan, high resolution LPM imaging usually requires mosaicking of multiple frames. Figure 5 shows an image of an ocean-floor hydrothermal vent assembled in this way by our collaborators at Woods Hole Oceanographic Institution. Errors in image registration and composition techniques contribute to errors on the scale of meters in the large-scale representation of imaged objects, reducing their utility in quantitative oceanography. The use of high-resolution sonar maps to register the optical images is a multi-modality path to the desired capability for high-resolution mapping of hundreds of thousands of square meters with an accuracy of centimeters.

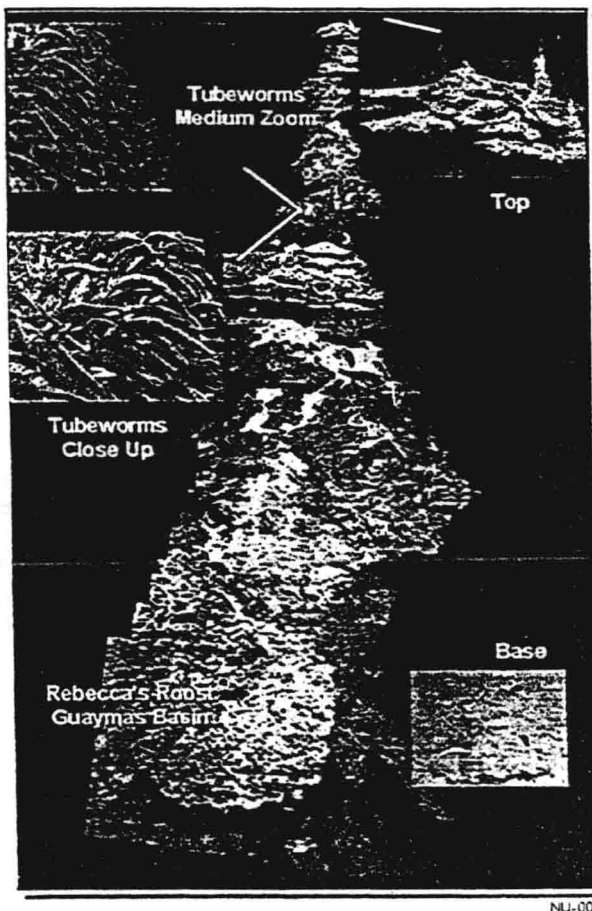
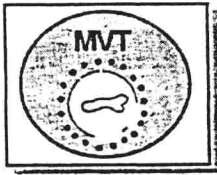


Figure 5. High-resolution underwater optical image of an ocean-floor thermal vent is assembled by 3D photo-mosaicking techniques. (Photo courtesy of Woods Hole Oceanographic Institution.)



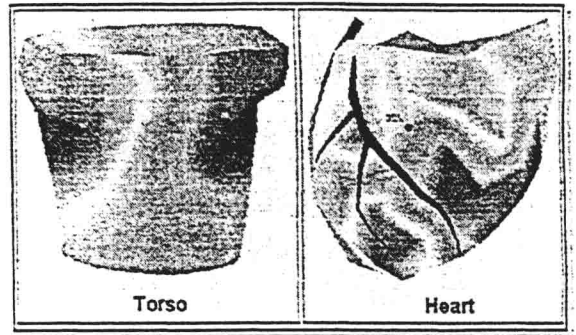
In contrast to LPM where the sensor information is spatially isolated, in *multi-view tomography* (MVT) correlated information from multiple sensors is combined mathematically to create a virtual map of the physical properties of the target. These systems all involve mathematical inversion of integral

equations through linearization, regularization, and integral transforms. Examples include x-ray CAT scanning, diffraction tomography, and synthetic aperture radar.

If multiple view angles are possible, MVT techniques can image obstructed/occluded objects and yield quantitative maps of wave velocity as well as absorption, allowing imaging of phase-only objects. For wavelengths that are short compared to feature dimensions, as in CAT scans^{8,9}, Radon convolution-backprojection algorithms combined with Fast Fourier Transforms (FFT) can achieve 3D feature imaging.

Diffraction tomography¹⁰ is the technique of image reconstruction and resolution enhancement by multiple-view imaging when the wavelength is comparable to feature size. The development of the theory of diffraction tomography by the linearization and Fast Fourier Transform (FFT) inversion of the wave diffraction equations using the filtered back-propagation algorithm was pioneered in the early 1980s.^{11,12} Diffraction tomography has been successfully applied for seismic imaging of near-surface objects, including fossil dinosaur bones¹³ and to ultrasonic imaging^{14,15,16}. Applications of diffraction tomography with limited or obstructed field-of-view or with higher-order, non-linear models is at the forefront of the state-of-the-art.

When the wavelength is long compared to feature size, *near-field* tomographic techniques can still yield useful information in geophysical or medical applications. In Electrical Resistance Tomography and Electromagnetic Induction Tomography, quasi-static probes and models are used to image contaminants in soil and groundwater and leaks from storage tanks on scales much smaller than the electromagnetic wavelength.^{17,18} Applications in medical imaging include Electrical Impedance Tomography¹⁹ and Cardiac Electrical Imaging^{20,21,22}. Figure 6 shows the electric potential on the heart imaged from the measured potential on the torso by Cardiac Electrical Imaging. The potential benefits of the enhanced information gained by this technique over standard electrocardiograms (ECGs) are enormous. ECGs have a rate of false diagnosis of myocardial infarctions ("heart attacks") as high as 30% which results in unnecessary health-care costs in the U.S. estimated at \$4 billion per year²³, while up to 25% of actual heart attacks go unnoticed until evidence of cardiac damage is detected in annual checkups.



NU-008

Figure 6. In Cardiac Electrical Imaging (CEI), near-field MVT inversion yields the electric potential on the heart from measured voltages on the torso.



Multi-spectral discrimination (MSD) adds the element of frequency discrimination to the spatial resolution sought by LPM and MVT giving a 4-dimensional map (3-space plus frequency) of the object. Combinations of MSD with LPM are common (a color photograph or hyperspectral image are examples). Joint methods for MSD and MVT have received little attention. MSD information extraction methods focus on material dispersion, parameter estimation, image registration, and fusion. Multi-sensor fusion can be viewed as an MSD problem involving, in some cases, probes that differ in modality (acoustic and optical, for example) as well as frequency.

For example, the work illustrated in Figure 7 shows that subtractive imaging at two nearby optical wavelengths can map specific chemical concentrations, such as oxygenated /deoxygenated hemoglobin (Hb).²⁴ This use of optical spectroscopy to detect chemical indicators of physiological function *in vivo* is promising for diagnostic discrimination. The rich spectral interaction of IR-VIS-UV light with biological molecules, however, causes absorption and strong scattering in tissue^{25,26,27} and makes the localization of emergent light difficult. Diffusive Wave Imaging^{28,29} in strongly scattering media is the focus of much current research, including optical coherence tomography^{30,31,32} and CensSIS work in *dual-wave* acousto-photonics imaging which seeks to improve spatial resolution from centimeters to millimeters for precise quantitative diagnosis.

Satellite hyperspectral imaging of the Caribbean Basin has been used to determine the health of coral reef ecosystems and measure coastal erosion³³. Reflected light is strongly scattered in the water column, by the ocean surface, and by the atmosphere, distorting the frequency spectral information as well as the position of underwater objects. This problem is similar to medical diffusive imaging except on a length scale that differs by orders of magnitude. The physics of both are modeled by the radiative transfer equation (RTE)³⁴. However, in diffusive medical imaging, the ratio of absorbed to scattered light is assumed to be small leading to the diffusion equation, while in ocean scattering Beer's law is often applied by assuming the ratio is large. In reality, the physical situation in both cases may be intermediate, and there is a need for more rigorous forward models and more robust inversion algorithms. Current spatial resolution from space-based platforms is approximately 1 meter; processing techniques that take advantage of accurate physical models may improve the resolution limit to 10 centimeters.

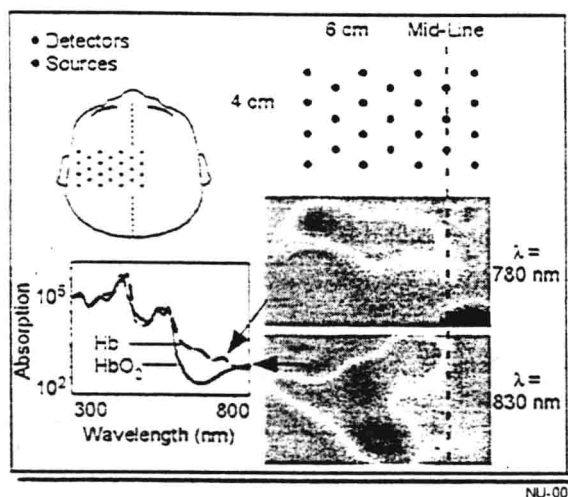


Figure 7 MSD analysis of diffusive optical waves images areas of activity (high blood oxygenation levels) in infant brain.

4. RESEARCH NEEDS AND BARRIERS TO PROGRESS

Progress in subsurface sensing and imaging approaches within these information extraction strategies has been documented in the feature articles in a recent issue of *Science* ("Imaging: New Eyes on Hidden Worlds")³⁵. Key elements in these advances include the increase in computation power, the application of new mathematical algorithms and advanced sensing strategies, the exploitation of wave coherence, and the fusion of multiple sensing modalities (e.g., microwave and infrared) to extract increasingly detailed information from physical systems.

Still, the need for new technologies is clear. The General Accounting Office has stated, "the dimensions and potential costs of cleaning up our environment are so great that, without innovative technologies, we may find the solution cost prohibitive and impacting on our ability to address other national needs." By using current technologies, the costs of remediating Superfund and Resource Conservation and Recovery Act sites, Federal facilities, and other known hazardous waste sites may total \$750 billion over the next 30 years³⁶. Humanitarian de-mining remains an unsolved problem. No current imaging technique can adequately detect precancerous cell masses in soft tissue or noninvasively diagnose arteriosclerosis, and there is no way to collect and correlate the images from different modalities to automatically identify incipient health problems.

Barriers to such advanced civil-environmental and biomedical detection systems lie both in unsolved fundamental research problems and in lack of adequate technology tools. Some of the major barriers are:

Barrier 1: Fundamental knowledge is lacking about nonlinear interactions, dual-wave sensing mechanisms, and coherent imaging in scattering media. While linear acoustic and electromagnetic interactions can be modeled and characterized by well-understood linear response functions, advanced imaging techniques using non-linear or dual-wave (e.g., acoustic/optical) probes require fundamental investigations to determine appropriate physical models.

Barrier 2: The present formulation of coherent inverse scattering is inadequate to quantitatively image objects in highly-scattering random inhomogeneous and cluttered environments. In these situations the non-linear character of the inverse problem defeats tomographic reconstruction and adequate alternatives do not yet exist.

Barrier 3: Recognition strategies for obscured and limited-view subsurface applications are not well developed, and we have no theory for combining different sensor inputs to optimize the information obtained.

Barrier 4: Forward modeling of large complex scattering geometries is too slow for real-time inverse-processing applications.