

Get Full Access and More at

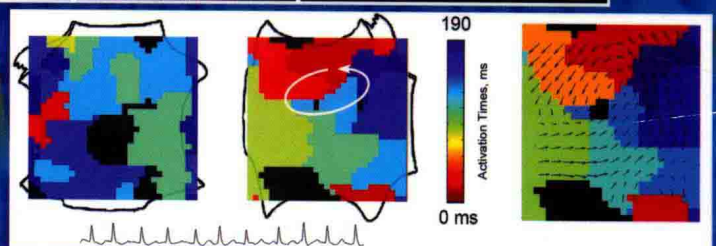
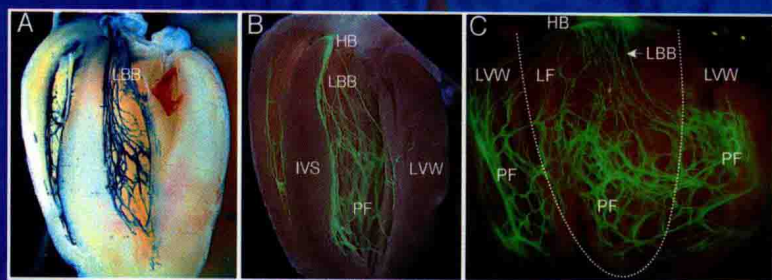
ExpertConsult.com

ZIPES / JALIFE

SIXTH EDITION

# CARDIAC ELECTROPHYSIOLOGY

*From Cell to Bedside*



ELSEVIER  
SAUNDERS

Sixth Edition

# Cardiac Electrophysiology

## From Cell to Bedside

DOUGLAS P. ZIPES, MD

Distinguished Professor

Emeritus Professor of Medicine, Pharmacology, and Toxicology  
Emeritus Director, Division of Cardiology and the Krannert Institute of Cardiology  
Indiana University School of Medicine

Indianapolis, Indiana

Editor-in-Chief, HeartRhythm

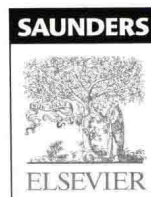
Editor-in-Chief, PracticeUpdate/Cardiology



JOSÉ JALIFE, MD

Georges and Jane Farrehi Professor of Cardiovascular Research  
Professor of Internal Medicine  
Professor of Molecular and Integrative Physiology  
University of Michigan Medical School  
Co-Director, University of Michigan Center for Arrhythmia Research  
Ann Arbor, Michigan

With 742 illustrations





All rights reserved. No part of this publication may be reproduced or transmitted in any form or by any means, electronic or mechanical, including photocopying, recording, or any information storage and retrieval system, without permission in writing from the publisher. Details on how to seek permission and further information about the Publisher's permissions policies and our arrangements with organizations such as the Copyright Clearance Center and the Copyright Licensing Agency can be found at our website: [www.elsevier.com/permissions](http://www.elsevier.com/permissions).

This book and the individual contributions contained in it are protected under copyright by the Publisher (other than as may be noted herein).

### Notices

Knowledge and best practice in this field are constantly changing. As new research and experience broaden our understanding, changes in research methods, professional practices, or medical treatment may become necessary.

Practitioners and researchers must always rely on their own experience and knowledge in evaluating and using any information, methods, compounds, or experiments described herein. In using such information or methods they should be mindful of their own safety and the safety of others, including parties for whom they have a professional responsibility.

With respect to any drug or pharmaceutical products identified, readers are advised to check the most current information provided (i) on procedures featured or (ii) by the manufacturer of each product to be administered, to verify the recommended dose or formula, the method and duration of administration, and contraindications. It is the responsibility of practitioners, relying on their own experience and knowledge of their patients, to make diagnoses, to determine dosages and the best treatment for each individual patient, and to take all appropriate safety precautions.

To the fullest extent of the law, neither the Publisher nor the authors, contributors, or editors assume any liability for any injury and/or damage to persons or property as a matter of products liability, negligence or otherwise, or from any use or operation of any methods, products, instructions, or ideas contained in the material herein.

### Library of Congress Cataloging-in-Publication Data

Cardiac electrophysiology (2014)

Cardiac electrophysiology : from cell to bedside / [edited by] Douglas P. Zipes, Jose Jalife.—Sixth edition.

p. ; cm.

Includes bibliographical references and index.

ISBN 978-1-4557-2856-5 (hardcover : alk. paper)

I. Zipes, Douglas P., editor of compilation. II. Jalife, Jose?, editor of compilation. III. Title.

[DNLM: 1. Arrhythmias, Cardiac. 2. Electrophysiologic Techniques, Cardiac.

3. Heart—physiology. WG 330]

RC685.A65

616.1'28—dc23

2013020141

Senior Editor: Dolores Meloni

Senior Content Development Specialist: Janice Gaillard

Publishing Services Manager: Catherine Jackson

Senior Project Manager: Rachel E. McMullen

Design Direction: Louis Forgone

Printed in Canada

Last digit is the print number: 9 8 7 6 5 4 3 2 1



Working together  
to grow libraries in  
developing countries

[www.elsevier.com](http://www.elsevier.com) • [www.bookaid.org](http://www.bookaid.org)

# Contributors

**Hugues Abriel, MD, PhD**  
Professor of Pathophysiology  
Director, Department of Clinical Research  
University of Bern  
Bern, Switzerland

**Wayne O. Adkisson, MD**  
Department of Medicine  
Cardiac Arrhythmia Center  
Cardiovascular Division  
University of Minnesota Medical School  
Minneapolis, Minnesota

**Esperanza Agullo-Pascual, PhD**  
Postdoctoral Fellow  
Department of Medicine  
Leon H Charney Division of Cardiology  
New York University School of Medicine  
New York, New York

**Olujimi A. Ajijola, MD, PhD**  
Clinical Instructor  
UCLA Cardiac Arrhythmia Center  
UCLA Health System  
Los Angeles, California

**Amin Al-Ahmad, MD**  
Assistant Professor  
Division of Cardiovascular Medicine  
Director Cardiac Electrophysiology Laboratory  
Stanford University  
Stanford, California

**Oluseun Alli, MD**  
Assistant Professor Medicine  
Director Structural Heart Program  
Division of Cardiology  
University of Alabama at Birmingham, University of Alabama  
Hospital  
Birmingham, Alabama

**Robert K. Altman, MD**  
Attending Physician  
Al-Sabah Arrhythmia Institute  
St. Luke's Roosevelt Hospital  
New York, New York

**Elad Anter, MD**  
Cardiac Electrophysiologist  
Cardiology  
Beth Israel Deaconess Medical Center  
Instructor  
Harvard Medical School  
Boston, Massachusetts

**Charles Antzelevitch, PhD**  
Executive Director and Director of Research  
Masonic Medical Research Laboratory  
Utica, New York

**Justus M. B. Anumonwo, PhD**  
Department of Internal Medicine  
Department of Molecular and Integrative Physiology  
University of Michigan  
Ann Arbor, Michigan

**Luciana Armaganijan, MD, PhD, MHS**  
Electrophysiologist  
Division of Electrophysiology and Cardiac Arrhythmias  
Dante Pazzanese Institute of Cardiology  
São Paulo, Brazil

**Hiroshi Ashikaga, MD, PhD**  
Division of Cardiology  
Department of Biomedical Engineering  
Johns Hopkins University School of Medicine  
Baltimore, Maryland

**Felipe Atienza, MD, PhD**  
Assistant Professor  
School of Medicine  
Universidad Complutense de Madrid  
Senior Electrophysiologist  
Cardiology Department  
Hospital General Universitario Gregorio Marañón  
Madrid, Spain

**Uma Mahesh R. Avula, MD**  
Center for Arrhythmia Research  
Internal Medicine/Cardiology  
University of Michigan  
Ann Arbor, Michigan

**Peter H. Backx, DVM, PhD**  
Professor Physiology and Medicine  
University of Toronto  
Toronto, Ontario, Canada

**Elise Balse, PhD**  
Université Pierre et Marie Curie-Paris 6-INSERM  
ICAN, Institute of Cardiometabolism and Nutrition  
Paris, France

**Conor D. Barrett, MD**  
Director  
Al-Sabah Arrhythmia Institute  
St. Luke's Roosevelt Hospital Center  
New York, New York

**David G. Benditt, GBSCEE, MD**  
Professor Cardiovascular Medicine  
University of Minnesota Medical Center  
Minneapolis, Minnesota

**Omer Berenfeld, PhD**  
Associate Professor Internal Medicine and Biomedical  
Engineering  
University of Michigan  
Ann Arbor, Michigan

**Donald M. Bers, PhD**

Senior Research Scientist  
Department of Medicine  
Leon H Charney Division of Cardiology  
New York University School of Medicine  
New York, New York

**Charles I. Berul, MD**

Professor Pediatrics and Integrative Systems Biology  
George Washington University  
Division Chief Cardiology  
Children's National Medical Center  
Washington, D.C.

**A. Christian Blank, MD**

Department of Pediatric Cardiology  
Wilhelmina Children's Hospital  
University Medical Center  
Utrecht, The Netherlands

**Raffaella Bloise, MD**

Molecular Cardiology  
IRCCS Fondazione Salvatore Maugeri  
Pavia, Italy

**Frank Matthias Bogun, MD**

Associate Professor Medicine  
Internal Medicine  
University of Michigan  
Ann Arbor, Michigan

**Martin Borggrefe, PhD, FESC**

Professor  
Department of Medicine  
University Medical Centre Mannheim  
Mannheim, Germany

**Noel G. Boyle, MD, PhD, FHRS**

Professor of Medicine  
UCLA Health system  
Los Angeles, California

**Günter Breithardt, MD**

Department Kardiologie und Angiologie  
Kompetenznetz Vorhofflimmern (AFNET)  
Universitätsklinikum Münster  
Münster, Germany

**Marisa Brini, PhD**

Department of Biology  
University of Padova  
Padova, Italy

**Peter R. Brink, PhD**

Department of Physiology and Biophysics  
Institute for Molecular Cardiology  
Stony Brook University  
Stony Brook, New York

**Josep Brugada, MD, PhD**

Medical Director  
Hospital of the University of Barcelona  
Barcelona, Spain

**Pau Brugada, MSc**

Cardiovascular Genetics Centre  
University of Girona-IDIBGI  
Girona, Spain

**Pedro Brugada, MD, PhD**

Professor, Chairman  
Cardiovascular Division  
UZ Brussel-VUB  
Brussels, Belgium

**Ramon Brugada, MD, PhD**

Dean, School of Medicine  
University of Girona-Spain  
Cardiovascular Genetics Centre  
University of Girona-IDIBGI  
Girona, Spain

**Victoria Brugada, BA**

Cardiovascular Division  
UZ Brussel-VUB  
Brussels, Belgium

**Eric Buch, MD, MS**

Assistant Professor of Medicine  
UCLA Cardiac Arrhythmia Center  
UCLA Health System  
Los Angeles, California

**Feliksas F. Bukauskas, PhD**

Dr Habil Professor  
Dominick P Purpura Department of Neuroscience  
Albert Einstein College of Medicine  
Bronx, New York

**J. David Burkhardt, MD**

Director of Research  
St David's Medical Center  
Texas Cardiac Arrhythmia Institute  
Austin, Texas

**Nenad Bursac, PhD**

Associate Professor Biomedical Engineering  
Faculty Cardiology  
Duke University  
Durham, North Carolina

**Hugh Calkins, MD**

Professor Medicine  
Director of Electrophysiology  
Nicholas J Fortuin Professor of Cardiology  
Johns Hopkins Medical Institutions  
Baltimore, Maryland

**David J. Callans, MD**

Associate Director of Electrophysiology  
UPHS Medicine  
University of Pennsylvania  
Philadelphia, Pennsylvania

**Oscar Campuzano, BSc, PhD**

Cardiovascular Genetics Centre  
University of Girona-IDIBGI  
Girona, Spain

**Sean M. Caples, MD**

Division of Pulmonary and Critical Care Medicine  
Sleep Disorders Clinic  
Department of Internal Medicine  
Mayo Clinic College of Medicine  
Rochester, Minnesota



**Ernesto Carafoli, MD**  
Venetian Institute for Molecular Medicine  
Padova, Italy

**Augustin Castellanos, MD**  
Emeritus Professor of Medicine  
Division of Cardiology  
University of Miami Miller School of Medicine  
Miami, Florida

**William Catterall, BA, PhD**  
Professor & Chair Pharmacology  
University of Washington  
Seattle, Washington

**Marina Cerrone, MD**  
Senior Research Scientist  
Department of Medicine  
Leon H Charney Division of Cardiology  
New York University School of Medicine  
New York, New York

**Lan S. Chen, MD**  
Professor of Clinical Neurology  
Department of Neurology  
Riley Hospital for Children  
Indiana University  
Indianapolis, Indiana

**Lei Chen, MD**  
Department of Pharmacology  
College of Physicians & Surgeons of Columbia University  
New York, New York

**Peng-Sheng Chen, MD**  
Medtronic Zipes Chair of Cardiology  
Director Krannert Institute of Cardiology  
Chief Division of Cardiology  
Cardiologist  
Cardiovascular Service Line  
Indiana University Health  
Indianapolis, Indiana

**Ashley Chin, MBChB**  
Department of Medicine  
University of Cape Town  
Director of Electrophysiology and Pacing  
Division of Cardiology  
Groote Schuur Hospital  
Cape Town, South Africa

**Aman Chugh, MD**  
Section of Electrophysiology  
University of Michigan Health System  
Ann Arbor, Michigan

**Ira S. Cohen, MD, PhD**  
Department of Physiology and Biophysics  
Institute for Molecular Cardiology  
Stony Brook University  
Stony Brook, New York

**Stuart J. Connolly, MD, FRCPC**  
Director, Division of Cardiology  
Salim Yusuf Chair in Cardiology  
Population Health Research Institute  
Hamilton Health Sciences  
McMaster University  
David Braley Cardiovascular and Stroke Research Institute  
Hamilton, Ontario, Canada

**Jason Constantino, PhD**  
Research Assistant  
Cardiovascular Research  
Department of Biomedical Engineering  
And Institute of Computational Medicine  
Johns Hopkins University  
Baltimore, Maryland

**Lia Crotti, MD, PhD**  
Section of Cardiology  
Department of Nuclear Medicine  
University of Pavia  
Department of Cardiology and Molecular Cardiology  
Laboratory  
IRCCS Fondazione Policlinico S. Matteo  
Pavia, Italy  
Institute of Human Genetics  
Helmholtz Zentrum Muenchen  
Neuherberg, Germany

**Frank A. Cuoco, Jr., MD, MBA, MS**  
Assistant Professor of Medicine  
Division of Cardiology  
Cardiac Electrophysiology  
Medical University of South Carolina  
Charleston, South Carolina

**Anne B. Curtis, MD**  
Charles and Mary Bauer Professor and Chair  
Medicine  
University at Buffalo  
Buffalo, New York

**Ralph J. Damiano, Jr., MD**  
John M. Schoenberg Professor of Surgery  
Chief of Cardiac Surgery  
Vice Chairman  
Department of Surgery  
Barnes-Jewish Hospital  
Washington University School of Medicine  
St. Louis, Missouri

**Dawood Darbar, MBChB, MD**  
Associate Professor Medicine  
Director Vanderbilt Arrhythmia Service  
Vanderbilt University  
Nashville, Tennessee

**Mithilesh K. Das, MD**  
Associate Professor Clinical Medicine  
Cardiology/Medicine  
Krannert Institute of Cardiology  
Indianapolis, Indiana

**Mario Delmar, MD, PhD**  
Professor Medicine/Cardiology  
New York University  
New York, New York

**Eva Delpón, BPharm, PhD**

Associate Professor Pharmacology  
School of Medicine  
Universidad Complutense  
Madrid, Spain

**Luigi Di Biase, MD, PhD**

Associate Professor, Department of Medicine, (Cardiology)  
Albert Einstein College of Medicine at Montefiore Hospital  
New York, USA;  
Senior Researcher  
Cardiology, Electrophysiology  
Texas Cardiac Arrhythmia Institute at St David's Medical  
Center  
Austin, Texas;  
Assistant Professor Cardiology  
University of Foggia  
Foggia, Italy

**Sanjay Dixit, MD**

Associate Professor Medicine  
Cardiovascular Division  
Hospital of the University of Pennsylvania,  
Director Cardiac Electrophysiology Cardiology-Medicine  
Philadelphia Veterans Affairs Medical Center  
Philadelphia, Pennsylvania

**Dobromir Dobrev, MD**

Professor of Pharmacology and Toxicology  
Director Institute of Pharmacology  
Faculty of Medicine  
University Duisburg-Essen  
Hufelandstrasse, Essen, Germany

**Derek J. Dosdall, PhD**

Assistant Professor Internal Medicine  
Cardiology  
Comprehensive Arrhythmia Research and Management Center  
University of Utah  
Salt Lake City, Utah

**John W. Dyer, PhD**

Research Assistant Professor  
School of Electrical and Computer Engineering  
The University of Oklahoma  
Norman, Oklahoma  
Biomedical Engineering Fellow  
Heart Rhythm Institute  
University of Oklahoma Health Sciences Center  
Oklahoma City, Oklahoma

**Lars Eckardt, MD**

Professor of Internal Medicine/Cardiology  
Division of Electrophysiology  
Department of Cardiology and Angiology  
University of Münster  
Münster, Germany

**Andrew G. Edwards, PhD**

Department of Bioengineering  
University of California San Diego  
La Jolla, California

**Igor R. Efimov, PhD, FA, HA, FHRS**

Lucy & Stanley Lopata Distinguished Professor  
Biomedical Engineering  
Washington University  
Professor Medicine and Radiology  
Professor Cell Biology and Physiology  
Washington University School of Medicine  
St. Louis, Missouri

**Kenneth A. Ellenbogen, MD**

Kontos Professor Medicine  
Cardiology  
VCU School of Medicine  
Richmond, Virginia

**Patrick T. Ellinor, MD, PhD**

Associate Professor  
Harvard Medical School;  
Associate Physician  
Cardiac Arrhythmia Service  
Cardiovascular Research Center  
Center for Human Genetic Research  
Massachusetts General Hospital  
Boston, Massachusetts

**Emilia Entcheva, PhD**

Associate Professor Biomedical Engineering  
Stony Brook University  
Stony Brook, New York

**N.A. Mark Estes III, MD**

Professor of Medicine  
Tufts University School of Medicine  
Director, New England Cardiac Arrhythmia Center  
Tufts Medical Center  
Boston, Massachusetts

**Rodolphe Fischmeister, PhD**

Director INSERM UMRs 769-LabEx LERMIT  
University Paris-Sud  
Faculty of Pharmacy  
Chatenay-Malabry, France

**John D. Fisher, MD**

Professor of Medicine  
Albert Einstein College of Medicine  
Program Director CCEP  
Montefiore Medical Center  
Bronx, New York

**Glenn I. Fishman, MD**

Director Leon H Charney Division of Cardiology  
New York University School of Medicine  
New York, New York

**David S. Frankel, MD**

Assistant Professor Medicine  
Cardiovascular Division, Electrophysiology Section  
Hospital of the University of Pennsylvania  
Philadelphia, Pennsylvania

**Michael R. Franz, MD, PhD, FHRS**  
 Professor of Medicine and Pharmacology  
 Georgetown University Medical Center;  
 Director  
 Myocardial and Arrhythmia Research  
 Staff Cardiology and Electrophysiologist  
 Veterans Affairs Medical Center  
 Washington, DC

**Paul A. Friedman, MD**  
 Director, Cardiac Implantable Device Lab  
 Division of Cardiovascular Medicine  
 Mayo Clinic  
 Rochester, Minnesota

**Victor F. Froelicher, MD**  
 Professor Medicine  
 Department of Medicine  
 Stanford University  
 Director ECG and Exercise Testing Laboratories  
 Veterans Affairs Palo Alto Health Care System  
 Palo Alto, California  
 Medical Director Human Performance Lab  
 Sportsmedicine  
 Stanford, California

**Apoor S. Gami, MD, MSc**  
 Cardiac Electrophysiology and Pacing  
 Advocate Medical Group – Midwest Heart Specialists  
 Elmhurst, Illinois

**Alfred L. George, Jr., MD**  
 Grant W. Liddle Professor  
 Chief Division of Genetic Medicine  
 Departments of Medicine and Pharmacology  
 Vanderbilt University  
 Nashville, Tennessee

**Edward P. Gerstenfeld, MD**  
 Associate Professor Medicine/Cardiology  
 University of California  
 San Francisco, California

**Michael R. Gold, MD, PhD**  
 Michael E Assey Professor of Medicine  
 Chief of Cardiology MUSC  
 Charleston, South Carolina

**Jeffrey J. Goldberger, MD, MBA**  
 Professor of Medicine  
 Northwestern University Feinberg School of Medicine  
 Chicago, Illinois

**Eleonora Grandi, PhD**  
 Assistant Project Scientist  
 Pharmacology  
 University of California Davis  
 Davis, California

**Richard A. Gray, PhD**  
 Biomedical Engineer  
 Center for Devices and Radiological Health  
 Office of Science and Engineering Laboratories  
 Food and Drug Administration  
 Silver Spring, Maryland

**William J. Groh, MD, MPH**  
 Associate Professor Medicine  
 Indiana University School of Medicine  
 Indianapolis, Indiana

**Blair P. Grubb, MD**  
 Professor Medicine and Pediatrics  
 Cardiovascular Medicine  
 The University of Toledo  
 Toledo, Ohio

**Michel Haissaguerre, MD**  
 University of Bordeaux, France  
 Hospital Cardiologique du Haut-Leveque  
 Pessac, France

**Johan Hake, PhD**  
 Department of Bioengineering  
 University of California San Diego  
 LaJolla, California  
 Department of Computational Cardiac Modeling  
 Simula Research Laboratory  
 Lysaker, Norway

**Henry R. Halperin, MD, MA, FAHA, FHRS**  
 David J. Carver Professor of Medicine  
 Professor of Radiology and Biomedical Engineering  
 Johns Hopkins University  
 Baltimore, Maryland

**Louise Harris, MBChB, FACC**  
 Professor Medicine  
 University of Toronto  
 Staff Cardiologist/Electrophysiologist  
 Medicine/Cardiology  
 Toronto Congenital Cardiac Centre for Adults  
 Peter Munk Cardiac Centre  
 University Health Network  
 Toronto, Ontario, Canada

**Stéphane Hatem, MD, PhD**  
 Professor Medicine  
 ICAN Institute of Cardiometabolism & Nutrition  
 UMRS-956 (INSERM/UPMC)  
 Faculté de Médecine Pitié-Salpêtrière  
 Paris, France

**David L. Hayes, MD**  
 Professor Medicine and Cardiovascular Diseases  
 Mayo Clinic  
 Rochester, Minnesota

**Meleze Hocini, MD**  
 University of Bordeaux, France  
 Hôpital Cardiologique du Haut-Lévêque  
 Pessac, France

**Stefan H. Hohnloser, MD**  
 Professor Cardiology  
 Department of Cardiology  
 JW Goethe University  
 Frankfurt, Germany

**David Richard Holmes, Jr., MD**  
 Professor Medicine and Cardiovascular Diseases  
 Mayo Clinic  
 Rochester, Minnesota



**Masahiko Hoshijima, MD, PhD**

Associate Adjunct Professor  
Center for Research in Biological Systems and Department of  
Medicine  
University of California San Diego  
La Jolla, California

**Yuxuan Hu, MSE**

Graduate Student  
Department of Biomedical Engineering  
And Institute of Computational Medicine  
Johns Hopkins University  
Baltimore, Maryland

**Thomas J. Hund, PhD**

Assistant Professor  
Departments of Biomedical Engineering and Internal Medicine  
Dorothy M. Davis Heart and Lung Research Institute  
The Ohio State University  
Columbus, Ohio

**Mathew D. Hutchinson, MD**

Assistant Professor Medicine  
Cardiovascular Division  
University of Pennsylvania  
Philadelphia, Pennsylvania

**Hye Jin Hwang, MD, PhD**

Assistant Professor Medicine  
Division of Cardiology  
Yonsei Cardiovascular Research Institute  
Yonsei University College of Medicine  
Seoul, Republic of Korea  
Department of Biomedical Engineering  
Washington University in St. Louis  
St. Louis, Missouri

**Raymond E. Ideker**

Professor Emeritus of Medicine  
University of Alabama at Birmingham  
Birmingham, Alabama

**Leonard Ilkhanoff, MD, MS**

Assistant Professor Medicine  
Northwestern University Feinberg School of Medicine;  
Director, Acquired and Inherited Arrhythmia Program  
Northwestern Memorial Hospital  
Department of Medicine, Division of Cardiology  
Electrophysiology Section  
Chicago, Illinois

**Jodie Ingles, PhD**

Research Officer  
Molecular Cardiology Research Program  
Centenary Institute  
Sydney, New South Wales, Australia

**Warren M. Jackman, MD**

George Lynn Cross Research Professor  
Heart Rhythm Institute  
University of Oklahoma Health Sciences Center  
Oklahoma City, Oklahoma

**Pierre Jais, MD**

University of Bordeaux, France  
Hôpital Cardiologique du Haut-Lévêque  
Pessac, France

**José Jalife, MD**

Cyrus and Jane Farrehi Professor of Cardiovascular Research  
Professor of Internal Medicine  
Professor of Molecular and Integrative Physiology  
University of Michigan Medical School  
Co-Director, University of Michigan Center for Arrhythmia  
Research  
Ann Arbor, Michigan

**Bong Sook Jhun, PhD**

Research Associate  
Center for Translational Medicine  
Department of Medicine  
Jefferson Medical College  
Thomas Jefferson University  
Philadelphia, Pennsylvania

**Roy M. John, MBBS, PhD**

Associate Director Cardiac Electrophysiology Laboratory  
Brigham and Women's Hospital  
Assistant Professor Medicine  
Harvard Medical School  
Boston, Massachusetts

**Monique Jongbloed, MD, PhD**

Departments of Cardiology and Anatomy  
Leiden University Medical Center  
Leiden, The Netherlands

**Mark E. Josephson, MD, FACC, FACP**

Professor Medicine  
Division of Cardiology  
Beth Israel Deaconess Medical Center  
Harvard Medical School  
Director Harvard-Thorndike Electrophysiology Institute and  
Arrhythmia Service  
Chief Cardiovascular Division  
Beth Israel Deaconess Medical Center  
Boston, Massachusetts

**Alan H. Kadish, MD**

President  
Touro College  
New York Medical College  
New York, New York

**Jérôme Kalifa, MD, PhD**

Assistant Professor Internal Medicine  
University of Michigan  
Ann Arbor, Michigan

**Jonathan M. Kalman, MBBS, PhD**

Director of Cardiac Electrophysiology  
Cardiology Royal Melbourne Hospital,  
Professor of Medicine  
Medicine University  
University of Melbourne  
Melbourne, Victoria, Australia

**Timothy J. Kamp, MD, PhD**

Professor, Director, Stem Cell and Regenerative Medicine  
Center  
University of Wisconsin-Madison  
Madison, Wisconsin

**Mohamed Hani Kanj, MD**

Associate Director Electrophysiology Labs  
Robert and Suzanne Tomsich Department of Cardiovascular  
Medicine  
Cleveland Clinic  
Cleveland, Ohio

**Beverly Karabin, RN, MSN, PhD**

Associate Professor of Nursing  
College of Nursing  
University of Toledo Medical Center  
Toledo, Ohio

**Robert S. Kass, PhD**

Professor and Chair Pharmacology  
Columbia University Medical Center  
New York, New York

**Demosthenes G. Katritsis, MD, PhD**

Director Cardiology  
Athens Euroclinic  
GRC, Hon Consultant Cardiologist  
Cardiology  
Guy's and St Thomas' Hospitals  
London, Great Britain

**Kuljeet Kaur, PhD**

Center for Arrhythmia Research  
University of Michigan  
Ann Arbor, Michigan

**Jong J. Kim, PhD**

Postdoctoral Associate  
Biomedical Engineering  
Duke University  
Durham, North Carolina

**Paulus Kirchhof, MD, FESC, FHRS**

Professor Cardiovascular Medicine  
Centre for Cardiovascular Sciences  
University of Birmingham,  
Consultant Cardiologist  
SWBH NHS Trust  
Birmingham, United Kingdom;  
Associate Professor Medicine  
Department of Cardiology and Angiology  
University Hospital Münster  
Münster, Germany

**André G. Kléber, MD**

Visiting Professor Pathology  
Beth Israel Deaconess Medical Center  
Harvard Medical School  
Boston, Massachusetts

**George J. Klein, MD, FRCP(C)**

Professor of Medicine  
Schulich School of Medicine  
Western University  
London, Ontario, Canada

**Peter Kohl, MD, PhD, FHRS**

Chair Cardiac Biophysics and Systems Biology  
National Heart and Lung Institute  
Imperial College  
London, GBR  
Visiting Professor and Reader in Cardiac Physiology  
Department of Computer Science  
University of Oxford  
Oxford, Great Britain

**Aravindan Kolandaivelu, MD**

Division of Cardiology  
Johns Hopkins University School of Medicine  
Baltimore, Maryland

**Andrew D. Krahn, MD, FHRS**

Chief of Cardiology  
Sauder Family and Heart and Stroke Foundation Chair in  
Cardiology  
Paul Brunes UBC Professor in Heart Rhythm Disorders  
University of British Columbia  
Vancouver, British Columbia, Canada

**Andrew Krumerman, MD**

Associate Professor Clinical Medicine  
Division of Cardiac Electrophysiology  
Albert Einstein College of Medicine/MMC  
Bronx, New York

**Saurabh Kumar, BSc(Med), MBBS**

Department of Cardiology  
and Department of Medicine  
The Royal Melbourne Hospital  
University of Melbourne  
Parkville, Victoria  
Australia

**Karl-Heinz Kuck, MD, PhD**

Chief  
Department of Medicine  
Asklepios Klinik St. Georg  
Hamburg, Germany

**Edward G. Lakatta, MD**

Director  
Laboratory of Cardiovascular Science  
Intramural Research Program  
National Institute on Aging  
National Institutes of Health  
Baltimore, Maryland

**Rakesh Latchamsetty, MD**

Clinical Lecturer Electrophysiology  
University of Michigan Hospital  
Ann Arbor, Michigan

**Dennis H. Lau, MBBS, PhD**

Senior Lecturer and NHMRC Postdoctoral Fellow  
Centre for Heart Rhythm Disorders  
University of Adelaide  
Royal Adelaide Hospital and SAHMRI  
Adelaide, Australia

**Bruce B. Lerman, MD**

H. Altschul Master Professor of Medicine  
Chief Division of Cardiology  
Director Cardiac Electrophysiology Laboratory  
Department of Medicine  
Division of Cardiology  
Cornell University Medical Center  
New York Presbyterian Hospital  
New York, New York

**Jérôme Leroy, PhD**

Assistant Professor of Physiology  
Faculty of Pharmacy IFR141-University Paris-Sud  
Signalisation et Physiopathologie Cardiaque-Inserm UMR-S  
769 – LabEx Lermi  
Châtenay-Malabry, France

**William R. Lewis, MD**

Chief Clinical Cardiology  
Case Western Reserve University School of Medicine  
Cleveland, Ohio

**Shien-Fong Lin, PhD**

Professor Medicine  
Division of Cardiology  
Department of Medicine  
Indianapolis, Indiana

**Mark S. Link, MD**

Professor Internal Medicine  
Tufts University School of Medicine  
Boston, Massachusetts

**Christopher F. Liu, MD**

Assistant Professor Medicine  
Division of Cardiology  
Weill Cornell Medical College  
Assistant Director Cardiac Electrophysiology Laboratory  
New York-Presbyterian Hospital/Cornell Medical Center  
New York, New York

**Deborah J. Lockwood, MBBCh**

Associate Professor Medicine  
Medicine/Cardiovascular Heart Rhythm Institute  
OU Health Sciences Center  
Oklahoma City, Oklahoma

**Peter Loh, MD, PhD**

Department of Cardiology  
Division of Heart and Lungs  
University Medical Center  
Utrecht, The Netherlands

**Anatoli N. Lopatin, PhD**

Associate Professor Molecular and Integrative Physiology  
Molecular and Integrative Physiology  
University of Michigan Medical School  
Ann Arbor, Michigan

**John C. Lopshire, MD, PhD**

Assistant Professor Medicine and Cellular & Integrative  
Physiology  
Department of Medicine/Cardiology  
Krannert Institute of Cardiology  
Indiana University School of Medicine,  
Attending Physician Cardiac Electrophysiology  
Department of Medicine/Cardiology  
Richard L Roudebush Veterans Affairs Medical Center  
Indianapolis, Indiana

**Steven A. Lubitz, MD, MPH**

Instructor  
Harvard Medical School;  
Assistant in Medicine  
Cardiac Arrhythmia Service  
Cardiovascular Research Center  
Massachusetts General Hospital  
Boston, Massachusetts

**Christopher Madias, MD**

Clinical Cardiac Electrophysiology Service  
Department of Medicine  
Rush University Medical Center  
Chicago, Illinois

**Aman Mahajan, MD, PhD**

Professor of Anesthesiology  
UCLA Cardiac Arrhythmia Center  
UCLA Health System  
Los Angeles, California

**Jonathan C. Makielski, MD**

Fellow Medicine  
Professor Medicine  
University of Wisconsin  
Madison, Wisconsin

**Marek Malik, PhD, MD, DSc**

Professor of Cardiac Electrophysiology  
St. Paul's Cardiac Electrophysiology  
St. George's, University of London  
London, England

**Victor A. Maltsev, PhD**

Staff Scientist  
Laboratory of Cardiovascular Science  
Intramural Research Program  
National Institute on Aging  
National Institutes of Health  
Baltimore, Maryland

**Francis E. Marchlinski, MD, FACC, FHRS**

Professor Medicine  
University of Pennsylvania School of Medicine  
Director Electrophysiology  
Hospital of the University of Pennsylvania  
Philadelphia, Pennsylvania

**Ariane J. Marelli, MD, MPH**

Associate Professor Medicine  
McGill University  
Director McGill Adult Unit for Congenital Heart Disease  
Division of Cardiology  
McGill University Health Centre  
Montreal, Quebec, Canada



**Steven M. Markowitz, MD**

Professor Medicine  
Cornell University Medical Center  
New York Presbyterian Hospital  
New York, New York

**Barry J. Maron, MD**

Director  
Hypertrophic Cardiomyopathy Center  
Minneapolis Heart Institute Foundation  
Minneapolis, Minnesota;  
Professor of Medicine  
Tufts Medical Center and School of Medicine  
Boston, Massachusetts;  
Professor of Medicine  
Mayo Clinic  
Rochester, Minnesota

**Jeffrey R. Martens, PhD**

Associate Professor Pharmacology  
University of Michigan  
Ann Arbor, Michigan

**Steven O. Marx, BS, MD**

Associate Professor Medicine  
Columbia University College of Physicians and Surgeons  
New York, New York

**Andrew D. McCulloch, PhD**

Professor and Jacobs School Distinguished Scholar  
Director, Cardiac Biomedical Science and Engineering Center  
Departments of Bioengineering and Medicine  
University of California San Diego  
La Jolla, California

**Andreas Metzner, MD**

Staff Electrophysiologist  
Department of Cardiologist  
Asklepios Klinik St. Georg  
Hamburg, Germany

**Anuska P. Michailova, PhD**

Department of Bioengineering  
University of California San Diego  
La Jolla, California

**John Michael Miller, MD**

Professor Medicine  
Indiana University School of Medicine,  
Director Cardiac Electrophysiology Services  
Indiana University Health  
Indianapolis, Indianapolis

**Michelle Lynne Milstein, PhD**

Postdoctoral Research Fellow  
University of Michigan Medical School  
Department of Internal Medicine  
University of Michigan Center for Arrhythmia Research  
Ann Arbor, Michigan

**Peter Mohler, PhD**

Professor and Director  
Dorothy M Davis Heart and Lung Research Institute  
Ohio State University Medical Center  
Columbus, Ohio

**Fred Morady, MD**

Section of Electrophysiology  
University of Michigan Health System  
Ann Arbor, Michigan

**Robert J. Myerburg, MD**

Professor Medicine and Physiology  
Department of Medicine  
University of Miami Miller School of Medicine  
Miami, Florida

**Hiroshi Nakagawa, MD, PhD**

Professor of Medicine  
Director of Clinical Catheter Ablation Program  
Director of Translational Electrophysiology  
Heart Rhythm Institute  
The University of Oklahoma HSC  
Oklahoma City, Oklahoma

**Carlo Napolitano, MD, PhD**

Vice-Director of Molecular Cardiology  
IRCCS Fondazione Salvatore Maugeri  
Pavia, Italy;  
Research Associate Professor  
Cardiovascular Genetics Program  
Leon H Charney Division of Cardiology  
New York University School of Medicine  
New York, New York

**Sanjiv M. Narayan, MD, PhD**

Professor Medicine  
University of California San Diego  
Director Electrophysiology Section  
Veterans Affairs Medical Center  
San Diego, California

**Andrea Natale, MD**

Executive Medical Director  
Texas Cardiac Arrhythmia Institute  
St David's Medical Center  
Austin, Texas;  
Consulting Professor  
Division of Cardiology  
Stanford University  
Stanford, California;  
Clinical Professor Medicine  
Case Western Reserve University  
Cleveland, Ohio;  
Director, Interventional Electrophysiology  
Scripps Clinic  
San Diego, California

**Stanley Nattel, MD**

Professor and Paul David Chair in Cardiovascular  
Electrophysiology  
Université de Montréal  
Cardiologist and Director Electrophysiology Research Program  
Research Center  
Montreal Heart Institute  
Montreal, Quebec, Canada

**Saman Nazarian, MD**

Division of Cardiology  
Johns Hopkins University School of Medicine  
Baltimore, Maryland

**Jeanne M. Nerbonne, PhD**

Alumni Endowed Professor of Molecular Biology and  
Pharmacology  
Developmental Biology  
Washington University Medical School  
St. Louis, Missouri

**Fu Siong Ng, BSc (Hons), MBBS, MRCP, PhD**

Clinical Lecturer in Cardiology  
National Heart and Lung Institute  
Imperial College London  
London, United Kingdom;  
Clinical Research Fellow  
Department of Biomedical Engineering  
Washington University in St. Louis  
St. Louis, Missouri

**Akihiko Nogami, MD**

Director, Division of Heart Rhythm Management  
Yokohama Rosai Hospital  
Yokohama, Japan

**Sami F. Noujaim, PhD**

Assistant Professor Medicine  
Tufts University School of Medicine  
Investigator  
Molecular Cardiology Research Center  
Tufts Medical Center  
Boston, Massachusetts

**Brian Olshansky, MD**

Department of Internal Medicine  
University of Iowa Hospitals and Clinics  
Iowa City, Iowa

**Hakan Oral, MD**

Professor Internal Medicine  
Frederick GL Huetwell Professor of Cardiovascular Medicine  
Director Cardiac Arrhythmia Service  
University of Michigan  
Ann Arbor, Michigan

**Jin O-Uchi, MD, PhD**

Instructor  
Center for Translational Medicine  
Department of Medicine  
Jefferson Medical College  
Thomas Jefferson University  
Philadelphia, Pennsylvania

**Feifan Ouyang, MD**

Director Electrophysiology Laboratories  
Department of Cardiology  
Asklepios Klinik St Georg  
Hamburg, Germany

**Cevher Ozcan, MD**

Assistant Professor of Medicine  
Department of Medicine  
University at Buffalo School of Medicine  
and Biomedical Sciences  
Buffalo, New York

**Douglas L. Packer, MD**

Professor of Medicine  
Heart Rhythm Services  
Cardiovascular Diseases  
Department of Medicine  
Mayo Clinic  
St. Mary's Hospital  
Rochester, Minnesota

**Olle Pahlm, MD, PhD**

Emeritus Professor  
Clinical Physiology  
Lund University  
Lund, Sweden

**Sandeep V. Pandit, PhD**

Research Assistant Professor  
Internal Medicine-Cardiology  
University of Michigan  
Ann Arbor, Michigan

**David S. Park, MD, PhD**

Instructor  
Department of Medicine  
New York, University School of Medicine  
Leon H Charney Division of Cardiology  
Cardiac Electrophysiology  
NYU Langone Medical Center  
New York, New York

**Geoffrey S. Pitt, MD, PhD**

Director Ion Channel Research Unit  
Duke University  
Durham, North Carolina

**Sunny S. Po, MD, PhD**

Professor Medicine  
Heart Rhythm Institute  
Department of Medicine  
University of Oklahoma Health Sciences Center  
Oklahoma City, Oklahoma

**Silvia G. Priori, MD, PhD**

Scientific Director  
Director of Cardiology and Molecular Cardiology  
IRCCS Fondazione Salvatore Maugeri;  
Associate Professor  
Department of Molecular Medicine  
University of Pavia  
Pavia, Italy;  
Professor of Medicine  
Leon Charney Division of Cardiology  
New York University School of Medicine  
New York, New York

**Wouter-Jan Rappel, PhD**

Center for Theoretical Biological Physics  
and Department of Physics  
University of California San Diego  
San Diego, California

**Vivek Y. Reddy, MD**

Helmsley Trust Professor of Medicine  
Mount Sinai School of Medicine  
Director, Cardiac Arrhythmia Service  
Mount Sinai Hospital  
New York, New York

**Jason O. Robertson, MD, MS**

Research Fellow  
 Cardiothoracic Surgery  
 Washington University  
 Barnes-Jewish Hospital  
 St. Louis, Missouri

**Richard B. Robinson, PhD**

Department of Pharmacology  
 Center for Molecular Therapeutics  
 Columbia University Medical Center  
 New York, New York

**Dan M. Roden, MD**

Professor Medicine & Pharmacology  
 Assistant Vice-Chancellor for Personalized Medicine  
 Vanderbilt University School of Medicine  
 Nashville, Tennessee

**Robert A. Rose, PhD**

Department of Physiology and Biophysics  
 Faculty of Medicine  
 Dalhousie University  
 Halifax, Nova Scotia, Canada

**Michael R. Rosen, MD**

Professor Pharmacology and Pediatrics  
 Columbia University  
 New York, New York  
 Adjunct Professor Physiology and Biophysics  
 Stony Brook University  
 Stony Brook, New York

**Raphael Rosso, MD**

Department of Cardiology  
 Sourasky Tel-Aviv Medical Center  
 Sackler School of Medicine  
 Tel-Aviv University  
 Tel-Aviv, Israel

**Yoram Rudy, PhD**

The Fred Saigh Distinguished Professor  
 Biomedical Engineering, Cell Biology & Physiology  
 Medicine, Radiology, Pediatrics  
 Director Cardiac Bioelectricity and Arrhythmia Center (CBAC)  
 Washington University in St. Louis  
 St. Louis, Missouri

**Jeremy N. Ruskin, MD**

Director  
 Cardiac Arrhythmia Service  
 Massachusetts General Hospital;  
 Associate Professor of Medicine  
 Harvard Medical School  
 Boston, Massachusetts

**Hani N. Sabbah, PhD**

Professor Medicine  
 Wayne State University  
 Director Cardiovascular Research  
 Henry Ford Health System  
 Detroit, Michigan

**Frank B. Sachse, PhD**

Research Associate Professor of Bioengineering  
 Nora Eccles Harrison Cardiovascular Research and  
 Training Institute  
 University of Utah  
 Salt Lake City, Utah

**Lindsey L. Saint, MD**

Research Fellow  
 Cardiothoracic Surgery  
 Washington University  
 Barnes-Jewish Hospital  
 St. Louis, Missouri

**Javier Saiz, PhD**

Professor Biomedical Engineering  
 Universitat Politècnica de Valencia  
 Valencia, Spain

**José A. Sánchez-Chapula, MD, PhD**

Professor CUIB  
 Universidad de Colima  
 Colima, Mexico

**Prashanthan Sanders, MBBS, PhD**

Professor of Cardiology and NHMRC Practitioner Fellow  
 Director, Centre for Heart Rhythm Disorders  
 University of Adelaide, Royal Adelaide Hospital and SAHMRI  
 Adelaide, Australia

**Michael C. Sanguinetti, PhD**

Professor Physiology and Medicine  
 Nora Eccles Harrison Cardiovascular Research and  
 Training Institute  
 University of Utah  
 Salt Lake City, Utah

**Pasquale Santangeli, MD**

Research Fellow  
 St. David's Medical Center  
 Texas Cardiac Arrhythmia Institute  
 Austin, Texas

**Georgia Sarquella-Brugada, MD**

Pediatric Arrhythmia Unit  
 Hospital Sant Joan de Déu  
 University of Barcelona  
 Barcelona, Spain

**Jonathan Satin, PhD**

Professor Physiology  
 University of Kentucky College of Medicine  
 Lexington, Kentucky

**Martin Jan Schalij, MD, PhD**

Chief of Cardiology  
 Leiden University Medical Center  
 Leiden, The Netherlands

**Benjamin J. Scherlag, PhD**

Regents Professor, George Lynn Cross Research  
 Professor, Helen Webster  
 Professor, Cardiac Arrhythmias  
 Professor, Medicine  
 Heart Rhythm Institute  
 College of Medicine  
 University of Oklahoma Health Sciences Center  
 Oklahoma City, Oklahoma



**Rainer Schimpf, MD**

Department of Medicine-Cardiology  
University Medical Center  
Mannheim, Germany

**Georg Schmidt, MD**

Professor of Cardiology  
Technische Universität München  
Head Center of Nonlinear Dynamics in Cardiology  
Munich, Germany

**Peter J. Schwartz, MD**

Professor Cardiology, Molecular Medicine  
University of Pavia  
Director Laboratory for Cardiovascular Research and Coronary  
Care Unit  
Fondazione IRCCS;  
Policlinico S. Matteo  
Co-Director Cardiovascular Genetics Laboratory  
Pavia, Italy;  
Hatter Institute for Cardiovascular Research in Africa  
Department of Medicine  
University of Cape Town  
Cape Town, South Africa;  
Chair of Sudden Death  
Department of Family and Community Medicine  
College of Medicine, King Saud University  
Riyadh, Saudi Arabia

**Christopher Semsarian, MBBS, PhD, FRACP**

Professor Medicine  
University of Sydney  
Program Head Molecular Cardiology  
Centenary Institute  
Sydney, New South Wales, Australia

**Ashok J. Shah, MBBS**

University of Bordeaux II  
Bordeaux, France  
Department of Rhythmologie  
Hôpital Cardiologique du Haut-Lévêque  
Pessac, France

**Robin Shaw, MD, PhD**

Associate Professor  
Medicine  
University of California Los Angeles  
Associate Professor/Staff Physician II  
Cedars-Sinai Heart Institute  
Cedars-Sinai Medical Center  
Los Angeles, California

**Shey Shing Sheu, PhD**

Professor and Associate Director  
Center for Translational Medicine  
Department of Medicine  
Jefferson Medical College  
Thomas Jefferson University  
Philadelphia, Pennsylvania

**Kalyanam Shivkumar, MD, PhD, FHRS**

Professor of Medicine & Radiology  
UCLA Cardiac Arrhythmia Center  
UCLA Health System  
Los Angeles, California

**Allan C. Skanes, MD, FRCPC**

Professor of Medicine  
Director of EP Lab  
University Hospital  
Western University  
London, Ontario, Canada

**Virend K. Somers, MD, PhD**

Professor of Medicine  
Division of Cardiovascular Diseases  
Mayo Clinic  
Rochester, Minnesota

**Bruce S. Stambler, MD**

Professor of Medicine  
Case Western Reserve University  
Cleveland, Ohio

**Adam B. Stein, MD**

Assistant Professor Medicine  
University of Michigan  
Ann Arbor, Michigan

**Lynne Warner Stevenson, MD**

Director Cardiomyopathy/Heart Failure Program  
Brigham and Women's Hospital;  
Professor of Medicine  
Harvard Medical School  
Boston, Massachusetts

**William G. Stevenson, MD**

Director Clinical Electrophysiology  
Cardiovascular Division  
Brigham and Women's Hospital;  
Professor Medicine  
Harvard Medical School  
Boston, Massachusetts

**Jian Sun, PhD**

Cardiology  
Shanghai Jiao Tong University School of Medicine  
Attending Physician Cardiology  
Xin Hua Hospital  
Shanghai, China

**Richard Sutton, DSc**

Emeritus Professor Cardiology  
Imperial College  
London, Great Britain

**Michael O. Sweeney, MD**

Cardiac Pacing and Heart Failure Device Therapy  
Cardiovascular Division  
Brigham and Women's Hospital  
Boston, Massachusetts

**Charles Swerdlow, MD**

Cedars Sinai Heart Institute  
Clinical Professor Medicine  
Cardiology UCLA  
Los Angeles, California

**Juan Tamargo, MD, PhD, FESC**

Professor Pharmacology  
School of Medicine, Universidad Complutense  
Madrid, Spain

**Harikrishna Tandri, MD**

Division of Cardiology  
Johns Hopkins University School of Medicine  
Baltimore, Maryland

**Rabi Tawil, MD**

Professor Neurology  
University of Rochester Medical Center  
Rochester, New York

**Usha Tedrow, MD, MSc**

Director Clinical Cardiac Electrophysiology Program  
Department of Medicine, Cardiovascular Division  
Brigham and Women's Hospital  
Assistant Professor Medicine  
Harvard Medical School  
Boston, Massachusetts

**Cecile Terrenoire, MD**

Department of Pharmacology  
College of Physicians & Surgeons of Columbia University  
New York, New York

**Catalina Tobón, PhD**

Professor GI2B  
Instituto Tecnológico Metropolitano  
Medellín, Colombia;  
Research  
Universitat Politècnica de València  
Valencia, Spain

**Jeffrey A. Towbin, MD**

Executive Co-Director  
The Heart Institute;  
Professor and Chief  
Pediatric Cardiology  
Kindervelt-Samuel Kaplan Chair in Pediatric Cardiology and  
Cardiac Research  
Cincinnati Children's Hospital Medical Center  
University of Cincinnati College of Medicine  
Cincinnati, Ohio

**Natalia A. Trayanova, PhD**

Professor  
Department of Biomedical Engineering  
Johns Hopkins University  
Baltimore, Maryland

**Martin Tristani-Firouzi, MD**

Professor Pediatric Cardiology  
University of Utah School of Medicine  
Investigator  
Nora Eccles Harrison Cardiovascular Research and  
Training Institute  
Salt Lake City, Utah

**Richard G. Trohman, MD**

Clinical Cardiac Electrophysiology Service  
Department of Medicine  
Co-Director Section of Cardiology  
Rush University Medical Center  
Chicago, Illinois

**Zian H. Tseng, MD, MAS**

Associate Professor of Medicine in Residence  
Cardiac Electrophysiology Section, Cardiology Division  
University of California San Francisco  
San Francisco, California

**Mintu P. Turakhia, MD, MAS**

Assistant Professor of Medicine  
Department of Medicine (Cardiovascular Medicine)  
Stanford University  
Stanford, California;  
Director of Cardiac Electrophysiology  
Veterans Affairs Palo Alto Health Care System  
Palo Alto, California

**Ravi Vaidyanathan, ME, PhD**

Research Associate  
Medicine-Cardiology  
University of Wisconsin  
Madison, Wisconsin

**Héctor H. Valdivia, MD, PhD**

Frank N Wilson Professor of Cardiovascular Medicine  
Internal Medicine  
University of Michigan  
Ann Arbor, Michigan

**Virginijus Valiunas, PhD**

Research Associate Professor  
Physiology and Biophysics  
Stony Brook University  
Stony Brook, New York

**Marcel A.G. van der Heyden, PhD**

Medical Physiology  
University Medical Center Utrecht  
Utrecht, The Netherlands

**Christian van der Werf, MD**

Department of Cardiology  
Heart Failure Research Center  
Academic Medical Center  
Amsterdam, The Netherlands

**George F. Van Hare, MD**

Professor Pediatrics  
Washington University School of Medicine  
Director Pediatric Cardiology  
St. Louis Children's Hospital  
St. Louis, Missouri

**Marmar Vaseghi, MD, MS**

Assistant Professor of Medicine  
UCLA Cardiac Arrhythmia Center  
UCLA Health System  
Los Angeles, California

**Christian Veltmann, MD**

Department of Medicine-Cardiology  
University Medical Center  
Mannheim, Germany

**Victoria L. Vetter, MD, MPH, MSHP**

Director, Youth Heart Watch  
Professor of Pediatrics  
The Children's Hospital of Philadelphia  
Perelman School of Medicine at the University of Pennsylvania  
Philadelphia, Pennsylvania

**Sami Viskin, MD**

Director Cardiac Hospitalization  
Tel Aviv Medical Center  
Tel Aviv, Israel

**Niels Voigt, MD**

Institute of Pharmacology  
Faculty of Medicine  
University Duisburg-Essen  
Hufelandstrasse, Essen, Germany

**Marc A. Vos, PhD**

Professor and Chair of Medical Physiology  
Manager Research and Education Division Heart and Lungs  
University Medical Center Utrecht  
Utrecht University  
Utrecht, The Netherlands

**Galen S. Wagner, MD**

Associate Professor of Medicine, Cardiology  
Duke University Medical Center  
Durham, North Carolina

**Paul J. Wang, MD**

Professor Medicine  
Director Arrhythmia Service  
Stanford University  
Stanford, California

**Rukshen Weerasooriya, BMedSc (Hons), MBBS**

Clinical Professor  
Medicine University of Western Australia  
Crawley, Western Australia;  
Cardiac Electrophysiologist  
Cardiology  
Hollywood Private Hospital  
Nedlands, Western Australia;  
AF Ablation Clinic  
Nedlands, Western Australia

**Arthur A. M. Wilde, MD, PhD**

Professor Cardiology  
Department of Cardiology  
Heart Failure Research Center  
Academic Medical Center  
University of Amsterdam,  
Amsterdam, The Netherlands

**Bruce L. Wilkoff, MD**

Professor Internal Medicine  
Cardiovascular Medicine  
Cleveland Clinic Lerner College of Medicine  
Case Western Reserve University  
Director Cardiac Pacing and Tachyarrhythmia Devices  
Associate Chair Section of Cardiac Pacing and  
Electrophysiology  
Medical Information Officer Heart and Vascular Institute  
Cardiovascular Medicine  
Cleveland Clinic  
Cleveland, Ohio

**Erik Wissner, MD**

Director, Magnetic Navigation Laboratory  
Department of Cardiology  
Asklepios Klinik St. Georg  
Hamburg, Germany

**Y. Joseph Woo, MD**

Professor of Surgery  
Director, Cardiac Transplantation and Mechanical Circulatory  
Assist Program Director  
Minimally Invasive and Robotic Cardiac Surgery Program  
Division of Cardiovascular Surgery  
Department of Surgery  
University of Pennsylvania  
Philadelphia, Pennsylvania

**Masatoshi Yamazaki, MD, PhD**

Assistant Professor  
Cardiovascular Research  
Research Institute of Environmental Medicine  
Nagoya University  
Nagoya, Japan

**Felix Yang, MD**

Associate Director Cardiac Electrophysiology  
Maimonides Medical Center  
Brooklyn, New York

**Yael Yaniv, PhD**

Research Fellow  
Laboratory of Cardiovascular Science  
National Institute on Aging  
National Institutes of Health  
Baltimore, Maryland

**Sing-Chien Yap, MD, PhD**

Cardiology  
Erasmus Medical Center  
Rotterdam, The Netherlands

**Raymond Yee, MD**

Professor of Medicine  
University of Western Ontario  
Director  
Arrhythmia Service  
London Health Sciences Centre  
London, Ontario, Canada

**Manuel Zargoso, PhD**

Departamento de Fisiología  
Universidad de Valencia  
Valencia, Spain

**Katja Zeppenfeld, MD, PhD**

Departments of Cardiology and Anatomy  
Leiden University Medical Center  
Leiden, The Netherlands

**Douglas P. Zipes, MD**

Distinguished Professor  
Emeritus Professor of Medicine, Pharmacology, and Toxicology  
Emeritus Director, Division of Cardiology and the Krannert  
Institute of Cardiology  
Indiana University School of Medicine  
Indianapolis, Indiana  
Editor-in-Chief, HeartRhythm  
Editor-in-Chief, PracticeUpdate/Cardiology