

ANDREOLI

英文影印版

# 希氏内科学精要

CECIL Essentials  
*of* Medicine

第5版 • FIFTH EDITION

CARPENTER

GRIGGS

LOSCALZO

北京医科大学出版社



Health Sciences Asia, Elsevier Science



**EDITOR-IN-CHIEF**

**Thomas E. Andreoli, M.D., M.A.C.P.**

Professor and *The Nolan Chair*  
Department of Internal Medicine  
University of Arkansas College of Medicine  
Little Rock, Arkansas



英文影印版

# 希氏内科学精要

## CECIL ESSENTIALS OF MEDICINE 第5版 FIFTH EDITION

**EDITORS**

**Charles C. J. Carpenter, M.D., M.A.C.P.**

Professor of Medicine  
Director, International Health Institute  
Brown University School of Medicine  
Providence, Rhode Island

**Robert C. Griggs, M.D.**

*Edward A. and Alma Vollertsen Rykenboer* Professor of Neurophysiology  
Chair, Department of Neurology  
University of Rochester School of Medicine and Dentistry  
Rochester, New York

**Joseph Loscalzo, M.D., Ph.D.**

*Wade* Professor and Chair  
Department of Medicine  
Boston University School of Medicine  
Physician-in-Chief  
Boston Medical Center  
Director, Whitaker Cardiovascular Institute  
Boston, Massachusetts



北京医科大学出版社

Health Sciences Asia, Elsevier Science

Cecil Essentials of Medicine, 5th edition

Andreoli

ISBN: 0-7216-8179-4

Copyright © 2001 by W. B. Saunders Company. All rights reserved.

Authorized English language reprint edition published by the Proprietor.

Reprint ISBN: 981-4095-47-8

Copyright © 2002 by Health Sciences Asia, Elsevier Science. All rights reserved.

Printed in China by Health Sciences Asia, Elsevier Science under special arrangement with Beijing Medical University Press. This edition is authorized for sale in China only, excluding Hong Kong SAR and Taiwan. Unauthorized export of this edition is a violation of the Copyright Act. Violation of this Law is subject to Civil and Criminal Penalties.

本书英文影印版由 Health Sciences Asia, Elsevier Science 授权北京医科大学出版社在中国大陆境内独家发行。本版仅限在中国境内（不包括香港特别行政区及台湾）出版及标价销售。未经许可之出口，是为违反著作权法，将受法律之制裁。

Health Sciences Asia, Elsevier Science

583 Orchard Road, #09-01 Forum, Singapore 238884

Tel: (65) 737-3593 Fax: (65) 734-1874

All rights reserved. No part of this publication may be reproduced, stored in a retrieval system, or transmitted in any form or by any means, electronic, mechanical, photocopying, recording, or otherwise, without the prior written permission of the publisher.

本书任何部分之文字及图片，如未获得本公司之书面同意不得用任何方式抄袭、节录或翻印。

北京市版权局著作合同登记号：01-2002-0548

## 图书在版编目 (CIP) 数据

希氏内科学精要：第5版 / (美) 安德里奥利等著. — 影印本.

北京：北京医科大学出版社，2002.4

书名原文：Cecil Essentials of Medicine

ISBN 7-81071-258-6

I. 希… II. 安… III. 内科学—英文 IV. R5

中国版本图书馆 CIP 数据核字 (2002) 第 019331 号

北京医科大学出版社出版

(北京海淀区学院路 38 号北京大学医学部院内 100083)

山东省莱芜市圣龙印书书刊有限责任公司印刷 各地新华书店经销

\* \* \*

开本：880 × 1230mm 1/16 印张：68.5 字数：1920 千字

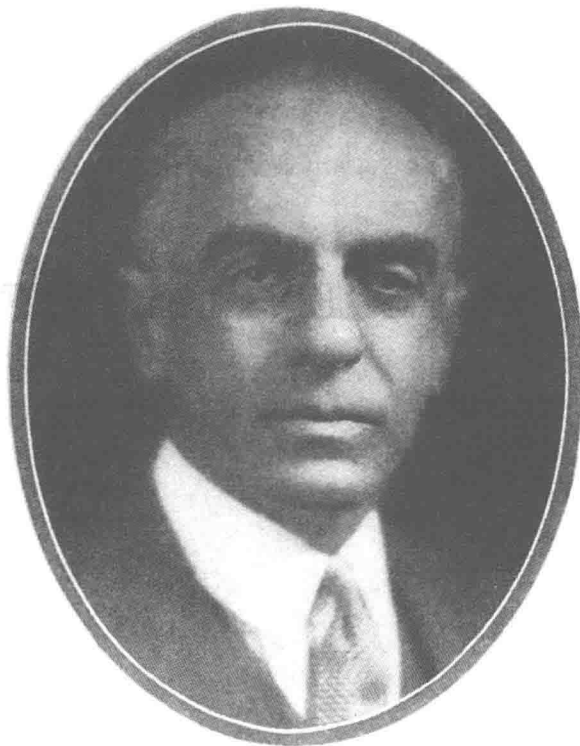
2002 年 5 月第 1 版 2002 年 5 月山东第 1 次印刷

印数：1-3000 册 定价：139.00 元



# CECIL ESSENTIALS OF MEDICINE

The following text is a faint, illegible scan of a page, likely containing medical information. It appears to be a list or a series of short paragraphs, but the characters are too light to transcribe accurately. The text is organized into several lines, suggesting a structured format like a table of contents or a list of items.



*Russell L. Cecil, M.D.*

The Editors thought it appropriate that readers of *Cecil Essentials of Medicine* understand why the book has commemorated the name of Dr. Cecil. These comments are particularly apt for today's readers, inasmuch as the first edition of *Cecil Essentials of Medicine* was published in 1986, 21 years after Dr. Cecil's death.

Dr. Cecil was born in 1882 and received his M.D. degree from the Medical College of Virginia in 1906. After training in Berlin and Vienna and at Johns Hopkins Hospital (Baltimore) and Presbyterian Hospital (New York), Dr. Cecil joined the faculty of Cornell University Medical College in 1915, where he spent the remainder of his career.

Dr. Cecil realized that the subject of internal medicine was too large in scope to be encompassed by a book written by a single individual and that advances in internal medicine were occurring at a rapidly accelerating pace. These tenets provided the basic motif for *The Cecil Textbook of Medicine*, first published in 1927: a comprehensive textbook written by distinguished experts and revised frequently in order to maintain currency.

Dr. Cecil's major clinical interests were in infectious diseases, particularly the pneumonias, and in rheumatologic diseases, particularly arthritis. He developed one of the first arthritis clinics in the United States, was a founding member of the American Rheumatism Association (ARA), and served as President of the ARA in 1937. His *Textbook of Medicine* rapidly became a standard throughout the world. He served as the sole Editor of *The Cecil Textbook of Medicine* for the first seven editions.

The Editors of *Essentials*, together with W.B. Saunders Company, have recognized the contributions of this exceptional clinician, scholar, and author by maintaining his name on the title of *Cecil Essentials of Medicine*.

T. E. ANDREOLI, EDITOR-IN-CHIEF

C. C. J. CARPENTER

R. C. GRIGGS

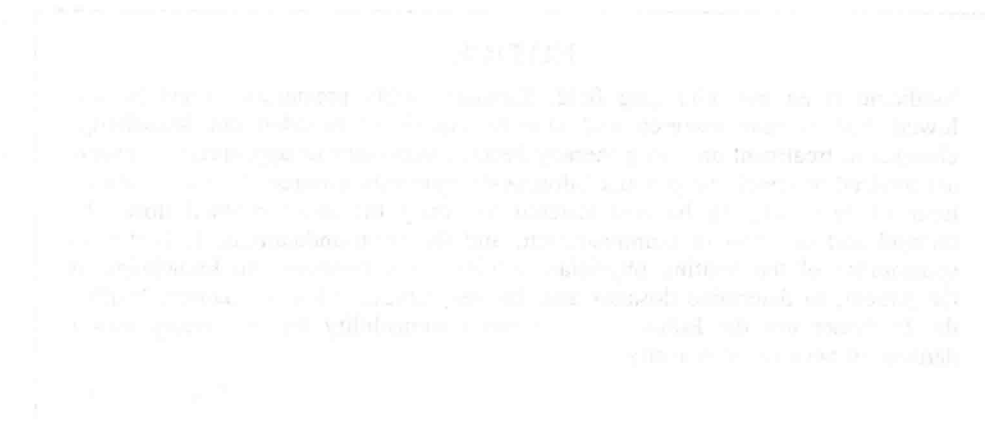
J. LOSCALZO

# 影印出版说明

*Cecil Essential of Medicine* 是国外经典的内科学教科书 *Cecil Textbook of Medicine* (希氏内科学) 的精华本。从 1982 年第一版开始, 每 4 年修订出版一次。第 5 版为 2001 年最新版, 由 T.E. Andreoli 等主编。该书内容系统全面, 秉承了第 4 版以诊断、治疗为核心的特点, 充实了近几年内科领域的主要进展。与第 4 版相比, 新增了分子生物学、循证医学及妇女保健的内容, 有 7 个章节的内容全部改写, 扩充了肿瘤和神经系统疾病的内容, 其余的部分也都做了较大幅度的修订。这对于读者充分认识新世纪生命科学时代, 掌握最新医学前沿新理论、新知识和新技术具有重要的意义。

本书对医学生应该掌握的内科学重点内容进行了系统的列表总结, 便于把握重点内容。用大量的图表替代了冗长的文字叙述, 尤其是大量直观、实用性强的病理生理、诊断、治疗图表的使用为临床诊断与治疗提供了速查依据。这种图文并茂的写作风格使第 5 版的篇幅比上一版减少约 10% 左右。虽然篇幅有所减少, 但仍然涵盖了内科学的核心内容。本书内容通俗易懂, 并且有权威性; 文字流畅, 可读性强; 条理清晰, 方便查阅。对于医学生与各级临床医务工作者, 本书不仅是一本实用的临床指南, 也是他们学习内科学专业知识, 提高其专业外语水平的一本内科学必读教科书。





This edition of *Cecil Essentials of Medicine* is dedicated to two former Editors:

Fred Plum, one of the founding Editors, who recognized the need for a compact textbook of Internal Medicine. Fred brought to *Cecil Essentials of Medicine* clarity in writing and a crisp logic in setting priorities for the content of the text.

J. Claude Bennett, an Editor for the third and fourth editions of this book. Claude brought to *Cecil Essentials of Medicine* his customary incisiveness and ecumenical knowledge of internal medicine.

We thank both of you.



## NOTICE

Medicine is an ever-changing field. Standard safety precautions must be followed, but as new research and clinical experience broaden our knowledge, changes in treatment and drug therapy become necessary or appropriate. Readers are advised to check the product information currently provided by the manufacturer of each drug to be administered to verify the recommended dose, the method and duration of administration, and the contraindications. It is the responsibility of the treating physician, relying on experience and knowledge of the patient, to determine dosages and the best treatment for the patient. Neither the Publisher nor the Editors assume any responsibility for any injury and/or damage to persons or property.

THE PUBLISHER



# CONTRIBUTORS

---

## Introduction to Molecular Medicine

### **Joseph Loscalzo, M.D., Ph.D.**

Wade Professor and Chair, Department of Medicine, Boston University School of Medicine; Physician-in-Chief, Boston Medical Center; Director, Whitaker Cardiovascular Institute, Boston, Massachusetts

## Decision-Making in Medical Practice

### **Susan S. Beland, M.D.**

Associate Professor, Department of Internal Medicine, Division of General Internal Medicine, University of Arkansas College of Medicine, Little Rock, Arkansas

### **Awny S. Farajallah, M.D.**

Assistant Professor, Department of Internal Medicine, Division of General Internal Medicine, University of Arkansas College of Medicine, Little Rock, Arkansas

## Cardiovascular Disease

### **Eric H. Awtry, M.D.**

Instructor in Medicine, Boston University School of Medicine; Director of Education, Section of Cardiology, Boston Medical Center, Boston, Massachusetts

### **Joseph Loscalzo, M.D., Ph.D.**

Wade Professor and Chair, Department of Medicine, Boston University School of Medicine; Physician-in-Chief, Boston Medical Center; Director, Whitaker Cardiovascular Institute, Boston, Massachusetts

### **Lisa A. Mendes, M.D.**

Assistant Professor of Medicine, Boston University School of Medicine; Staff Cardiologist, Boston Medical Center, Boston, Massachusetts

## Pulmonary and Critical Care Medicine

### **Kenneth L. Brigham, M.D.**

Ralph and Lulu Owen Professor of Pulmonary Medicine and Director, Center for Lung Research and Division of Allergy, Pulmonary and Critical Care Medicine, Vanderbilt University School of Medicine, Nashville, Tennessee

### **Bonnie S. Slovis, M.D.**

Assistant Professor of Medicine and Director, Outpatient Medicine, Division of Allergy, Pulmonary and Critical Care Medicine, Vanderbilt University School of Medicine, Nashville, Tennessee

## Renal Disease

### **Sameh R. Abul-Ezz, M.D.**

Associate Professor of Internal Medicine, Division of Nephrology, University of Arkansas College of Medicine, Little Rock, Arkansas

### **Thomas E. Andreoli, M.D., M.A.C.P.**

Professor and *The Nolan Chair*, Department of Internal Medicine, University of Arkansas College of Medicine, Little Rock, Arkansas

### **Yousri M. H. Barri, M.D.**

Assistant Professor of Internal Medicine, Division of Nephrology, University of Arkansas College of Medicine, Little Rock, Arkansas

### **Dinesh K. Chatoth, M.D.**

Assistant Professor of Internal Medicine, Division of Nephrology, University of Arkansas College of Medicine, Little Rock, Arkansas

### **Sudhir V. Shah, M.D.**

Professor of Internal Medicine and Director, Division of Nephrology, University of Arkansas College of Medicine, Little Rock, Arkansas

### **Mary Jo Shaver, M.D.**

Assistant Professor of Internal Medicine, Division of Nephrology, University of Arkansas College of Medicine, Little Rock, Arkansas

## Gastrointestinal Disease

### Edgar Achkar, M.D.

Vice Chairman, Department of Gastroenterology,  
Cleveland Clinic Foundation, Cleveland, Ohio

### Aaron Brzezinski, M.D.

Staff Gastroenterologist, Center for Inflammatory  
Bowel Disease, Department of Gastroenterology,  
Cleveland Clinic, Cleveland, Ohio

### Carol A. Burke, M.D.

Director, Center for Colon Cancer and Polyps,  
Department of Gastroenterology, Cleveland Clinic,  
Cleveland, Ohio

### Darwin L. Conwell, M.D.

Director, Pancreas Clinic, Department of  
Gastroenterology, Cleveland Clinic Foundation,  
Cleveland, Ohio

### Gary W. Falk, M.D.

Director, Center for Swallowing and Esophageal  
Disorders, Department of Gastroenterology,  
Cleveland Clinic Foundation, Cleveland, Ohio

### Joel E. Richter, M.D.

Chairman, Department of Gastroenterology,  
Cleveland Clinic Foundation, Cleveland, Ohio

### Edy E. Soffer, M.D.

Director, Center for Lower GI Motility Disorders,  
Department of Gastroenterology, Cleveland Clinic  
Foundation, Cleveland, Ohio

### John J. Vargo II, M.D.

Department of Gastroenterology, Cleveland Clinic  
Foundation, Cleveland, Ohio

### Gregory Zuccaro, Jr., M.D.

Head, Section of GI Endoscopy, Department of  
Gastroenterology, Cleveland Clinic Foundation,  
Cleveland, Ohio

## Diseases of the Liver and Biliary System

### Gary A. Abrams, M.D.

Assistant Professor of Medicine, Division of  
Gastroenterology and Hepatology, University of  
Alabama School of Medicine, Birmingham,  
Alabama

### Miguel R. Arguedas

Senior Fellow, Gastroenterology and Hepatology,  
Department of Medicine, Division of  
Gastroenterology and Hepatology, University of  
Alabama School of Medicine, Birmingham,  
Alabama

### Michael B. Fallon, M.D.

Assistant Professor of Medicine, Division of  
Gastroenterology and Hepatology, University of  
Alabama School of Medicine, Birmingham,  
Alabama

### Brendan M. McGuire, M.D.

Assistant Professor of Medicine, Division of  
Gastroenterology and Hepatology, University of  
Alabama School of Medicine, Birmingham,  
Alabama

## Hematologic Disease

### Nancy Berliner, M.D.

Arthur and Isabel Bunker Associate Professor of  
Medicine and Genetics, Yale University School of  
Medicine, New Haven, Connecticut

### Jill Lacy, M.D.

Associate Professor of Medicine, Section of Medical  
Oncology, Yale University School of Medicine,  
New Haven, Connecticut

### Henry M. Rinder, M.D.

Assistant Professor, Department of Laboratory  
Medicine and Internal Medicine (Hematology), Yale  
University; Director, Coagulation Laboratory, and  
Associate Director, Hematology Laboratories, Yale—  
New Haven Hospital, New Haven, Connecticut

### Eunice S. Wang, M.D.

Fellow, Department of Hematology-Oncology,  
Memorial Sloan Kettering Cancer Institute, New  
York, New York

## Oncologic Disease

### Christopher E. Desch, M.D.

Clinical Associate Professor of Medicine, Virginia  
Commonwealth University, Medical College of  
Virginia; Medical Director, Virginia Cancer  
Treatment Centers, Richmond, Virginia

### Jennifer J. Griggs, M.D.

Senior Instructor of Medicine, Division of  
Hematology/Oncology, University of Rochester  
School of Medicine, Rochester, New York

## Metabolic Disease

### Peter N. Herbert, M.D.

Clinical Professor of Medicine, Yale University School  
of Medicine; Chief of Staff and Senior Vice  
President for Medical Affairs, Yale—New Haven  
Hospital, New Haven, Connecticut

## Endocrine Disease

### Philip Barnett, M.D., Ph.D.

Associate Professor of Medicine, University of  
California, Los Angeles, School of Medicine;  
Director, Diabetes Program, Cedars-Sinai Medical  
Center, Los Angeles, California

### Glenn D. Braunstein, M.D.

Professor of Medicine, University of California, Los  
Angeles, School of Medicine; Chairman,  
Department of Medicine, Cedars-Sinai Medical  
Center, Los Angeles, California

**Theodore C. Friedman, M.D., Ph.D.**

Assistant Professor of Medicine, University of California, Los Angeles, School of Medicine; Staff Endocrinologist, Cedars-Sinai Medical Center, Los Angeles, California

**Vivien Herman-Bonert, M.D.**

Associate Professor of Medicine, University of California, Los Angeles, School of Medicine; Clinical Coordinator, Pituitary Clinic, Cedars-Sinai Medical Center, Los Angeles, California

**Women's Health****Sally L. Hodder, M.D.**

Associate Professor of Medicine, Case Western Reserve University School of Medicine; Staff Physician, University Hospitals of Cleveland, Cleveland, Ohio

**Ame L. Taylor, M.D.**

Associate Professor of Medicine, Division of Cardiology, and Vice Chair, Women's Health Programs, Case Western Reserve University School of Medicine; Attending Physician, University Hospitals of Cleveland, Cleveland, Ohio

**Diseases of Bone and Bone Mineral Metabolism****F. Richard Bringham, M.D.**

Associate Professor of Medicine, Harvard Medical School, Endocrine Unit; Chief of Staff, Massachusetts General Hospital, Boston, Massachusetts

**Joel S. Finkelstein, M.D.**

Associate Professor of Medicine, Harvard Medical School, Endocrine Unit; Massachusetts General Hospital, Boston, Massachusetts

**Margaret P. Seton, M.D.**

Instructor in Medicine, Harvard Medical School, Arthritis Unit; Massachusetts General Hospital, Boston, Massachusetts

**Musculoskeletal and Connective Tissue Disease****Joseph Korn, M.D.**

Professor of Medicine and Biochemistry, Arthritis Center, Boston University School of Medicine, Boston, Massachusetts

**Peter A. Merkel, M.D., M.P.H.**

Assistant Professor of Medicine, Boston University School of Medicine, Boston, Massachusetts

**Robert W. Simms, M.D.**

Associate Professor of Medicine and Clinical Director, Section of Rheumatology, Boston University School of Medicine, Boston, Massachusetts

**Infectious Disease****Charles C. J. Carpenter, M.D., M.A.C.P.**

Professor of Medicine and Director, International Health Institute, Brown University School of Medicine, Providence, Rhode Island

**Michael M. Lederman, M.D.**

Professor of Medicine, Case Western Reserve University School of Medicine; Attending Physician, University Hospitals of Cleveland, Cleveland, Ohio

**Robert A. Salata, M.D.**

Professor of Medicine, Vice-Chairman, Department of Medicine, and Chief, Division of Infectious Diseases, Case Western Reserve University; Attending Physician and Consultant and Medical Director, Hospital Epidemiology and Infection Control, University Hospitals of Cleveland, Cleveland, Ohio

**Neurologic Disease****Timothy J. Counihan, M.D., MRCPI**

Assistant Professor of Neurology, University of Rochester School of Medicine, Rochester, New York

**Jennifer J. Griggs, M.D.**

Senior Instructor of Medicine, Division of Hematology/Oncology, University of Rochester School of Medicine, Rochester, New York

**Robert C. Griggs, M.D.**

*Edward A. and Alma Vollertsen Rykenboer* Professor of Neurophysiology, and Chair, Department of Neurology, University of Rochester School of Medicine and Dentistry, Rochester, New York

**Frederick J. Marshall, M.D.**

Assistant Professor of Neurology and Chief, Geriatric Neurology Unit, Department of Neurology, University of Rochester School of Medicine and Dentistry, Rochester, New York

**Roger P. Simon, M.D.**

*Robert Stone Dow* Chair in Neurology and Director, Neurobiology Research, Legacy Health Systems, Portland, Oregon

**The Aging Patient****David A. Lipschitz, M.D., Ph.D.**

Professor and Chairman, *Donald W. Reynolds* Department of Geriatrics, University of Arkansas College of Medicine, Little Rock, Arkansas

**Robert J. Reis, M.D.**

Professor of Geriatrics, University of Arkansas College of Medicine, Little Rock, Arkansas

**Dennis H. Sullivan, M.D.**

Associate Professor of Geriatrics, University of  
Arkansas College of Medicine, Little Rock,  
Arkansas

**Substance Abuse**

**Jeffrey L. Clothier, M.D.**

Associate Professor of Psychiatry, University of  
Arkansas College of Medicine; Chief, Ambulatory  
Mental Health Service, John L. McClellan VA  
Hospital, Little Rock, Arkansas

**Timothy E. Holcomb, M.D.**

Associate Professor of Internal Medicine, University  
of Arkansas College of Medicine; Associate Chief  
of Staff for Primary Care, John L. McClellan VA  
Hospital, Little Rock, Arkansas



## PREFACE

---

The fifth edition of *Cecil Essentials of Medicine*, like the preceding editions, is a succinct and yet comprehensive textbook of internal medicine that considers the biologic basis for understanding disease processes, the clinical characteristics of diseases, and the compassionate and rational approaches to the diagnosis and treatment of diseases commonly encountered by practitioners of internal medicine and the medical subspecialties. Thus, this book is intended primarily for medical students; house officers; practitioners of general medicine, internal medicine and other subspecialties, and other medical disciplines; and other persons involved either in preventive medicine or in caring for patients.

This fifth edition of *Essentials* has been revised extensively. Two new Editors, Robert C. Griggs and Joseph Loscalzo, have replaced J. Claude Bennett, an Editor for the third and fourth editions, and Fred Plum, one of the founding Editors of *Essentials*. Three new sections have been added: Molecular Medicine; Evidence-Based Medicine; and Women's Health. The Oncology section has been expanded. New authors have rewritten seven sections entirely, and the remaining sections have been revised exhaustively with regard to both content and timeliness. As with the fourth edition, this edition utilizes four-color illustrations extensively. Finally, expansion of tabular material and algorithms enabled us to make the fifth edition of *Essentials* more readable and yet approximately 10% smaller than the preceding edition.

We are deeply grateful to a number of individuals. The legacy of both Claude Bennett and Fred Plum, to whom this edition is dedicated, remains. Dr. Susan S. Beland, Associate Professor of Internal Medicine at the University of Arkansas, reviewed all the content for this edition.

We also thank Ms. Lynne Gery, Manager, Developmental Editors, and Ms. Lisette Bralow, Executive Publisher, Medical Books, both of the W.B. Saunders Company, who contributed their customary excellence in the design and preparation of the fifth edition of *Essentials*. Mr. Leslie E. Hoeltzel, Emeritus Manager, Developmental Editors, assisted with prior editions of *Essentials* and with the initial planning for this edition. Finally, we thank our very able secretarial staff, Ms. Clementine M. Whitman (Little Rock); Ms. Barbara S. Ryan (Providence); Ms. Katherine A. Seropian (Boston); and Ms. Shirley E. Thomas (Rochester).

THE EDITORS





# CONTENTS

---

## SECTION I

### Introduction to Molecular Medicine..... 1

#### 1 THE MOLECULAR BASIS OF HUMAN DISEASE .....3

*Joseph Loscalzo*

- Deoxyribonucleic Acid and the Genetic Code 3
- Regulation of Gene Expression 5
- Genetic Variation, Population Diversity, and Genetic Polymorphisms 7
- Genes and Human Disease 8
- Gene Mapping 9
- Identifying Mutant Genes 10
- Molecular Diagnostics 11
- Genetic Therapies 12
- Promising Advances 12

## SECTION II

### Decision-Making in Medical Practice..... 13

#### 2 EVIDENCE-BASED MEDICINE..... 15

*Awmy S. Farajallah • Susan S. Beland*

- Searching for Relevant Information 15
- Critical Appraisal of the Literature 16
- Evaluating Evidence About Diagnostic Tests 16
- Evaluating Evidence About Outcome 17
- Evaluating Evidence About Treatment 17
- Including the Patient in the Decision Process 18

## SECTION III

### Cardiovascular Disease ..... 19

#### 3 STRUCTURE AND FUNCTION OF THE NORMAL HEART AND BLOOD VESSELS.....21

*Eric H. Awtry • Joseph Loscalzo*

- Microscopic Anatomy 21
- Gross Anatomy 21
- The Circulatory Pathway 22
- The Conduction System 23
- Neural Innervation 24
- Physiology of Contraction 24
- Circulatory Physiology and the Cardiac Cycle 24
- Cardiac Performance 25
- Physiology of the Coronary Circulation 27

- Physiology of the Systemic Circulation 28
- Physiology of the Pulmonary Circulation 28
- Cardiovascular Response to Exercise 29

#### 4 EVALUATION OF THE PATIENT WITH CARDIOVASCULAR DISEASE.....30

*Eric H. Awtry • Joseph Loscalzo*

- History 30
- Physical Examination 34
- Auscultation 37

#### 5 DIAGNOSTIC TESTS AND PROCEDURES IN THE PATIENT WITH CARDIOVASCULAR DISEASE.....43

*Lisa A. Mendes • Joseph Loscalzo*

- Chest Radiography 43
- Electrocardiography 43
- Abnormal ECG Patterns 45
- Long-Term Ambulatory ECG Recording 47
- Stress Testing 48
- Echocardiography 50
- Nuclear Cardiology 52
- Cardiac Catheterization 52
- Right-Sided Heart Catheterization 53
- Other Procedures 53
- Noninvasive Vascular Testing 55

#### 6 HEART FAILURE AND CARDIOMYOPATHY .....56

*Lisa A. Mendes • Joseph Loscalzo*

- Forms of Heart Failure 56
- Adaptive Mechanisms in Heart Failure 56
- Evaluation and Treatment of Patients with Heart Failure 57
- Treatment 59
- Refractory Heart Failure 60
- Cardiovascular Assist Devices 61
- Acute Pulmonary Edema 61
- Diastolic Dysfunction 61

#### 7 CONGENITAL HEART DISEASE .....63

*Lisa A. Mendes • Joseph Loscalzo*

- General Considerations 63
- Fetal and Transitional Circulations 63
- Congenital Aortic Stenosis 63



Coarctation of the Aorta	64
Pulmonic Valve Stenosis	65
Tetralogy of Fallot	65
Atrial Septal Defect	66
Ventricular Septal Defect	67
Patent Ductus Arteriosus	68
Other Congenital Abnormalities	68

## 8 ACQUIRED VALVULAR HEART DISEASE ..... 69

*Lisa A. Mendes • Joseph Loscalzo*

Aortic Stenosis	69
Aortic Regurgitation	70
Mitral Stenosis	72
Mitral Regurgitation	74
Mitral Valve Prolapse	74
Tricuspid Stenosis	75
Tricuspid Regurgitation	75
Pulmonic Stenosis and Regurgitation	76
Multivalvular Disease	76
Rheumatic Heart Disease	76
Prosthetic Heart Valves	77
Endocarditis Prophylaxis	77

## 9 CORONARY HEART DISEASE ..... 79

*Eric H. Awtry • Joseph Loscalzo*

Epidemiology	79
Pathophysiology of Atherosclerosis	79
Risk Factors	80
Nonatherosclerotic Causes of Cardiac Ischemia	81
Pathophysiology and Consequences of Myocardial Ischemia	82
Angina Pectoris	82
Acute Myocardial Infarction	90

## 10 CARDIAC ARRHYTHMIAS ..... 100

*Eric H. Awtry • Joseph Loscalzo*

Mechanisms of Arrhythmogenesis	100
Approach to the Patient with Suspected Arrhythmias	103
Management of Cardiac Arrhythmias	104
Specific Arrhythmias	111
Heart Block	120
Clinical Syndromes	122
Principles of Cardiopulmonary Resuscitation	125

## 11 MYOCARDIAL AND PERICARDIAL DISEASE ..... 127

*Lisa A. Mendes • Joseph Loscalzo*

Myocarditis	127
Cardiomyopathy	128
Amyloidosis	131
Pericardial Disease	132

## 12 OTHER CARDIAC TOPICS ..... 137

*Lisa A. Mendes • Joseph Loscalzo*

Cardiac Tumors	137
Traumatic Heart Disease	138
Cardiac Surgery	139
Noncardiac Surgery in the Cardiac Patient	140
Cardiac Disease in Pregnancy	142
Specific Cardiac Conditions	142

## 13 VASCULAR DISEASES AND HYPERTENSION ..... 145

*Eric H. Awtry • Joseph Loscalzo*

Systemic Vascular Disease	145
Venous Thromboembolic Disease	152
Pulmonary Vascular Disease	155
Hypertension	157

## SECTION IV

## Pulmonary and Critical Care Medicine ..... 165

## 14 APPROACH TO THE PATIENT WITH RESPIRATORY DISEASE ..... 167

*Bonnie S. Slovis • Kenneth L. Brigham*

Common Presenting Complaints	167
Physical Examination	169

## 15 ANATOMIC AND PHYSIOLOGIC CONSIDERATIONS ..... 172

*Bonnie S. Slovis • Kenneth L. Brigham*

Anatomy	172
Physiology	173
Abnormalities of Pulmonary Gas Exchange	177

## 16 DIAGNOSTIC TECHNIQUES AND THEIR INDICATIONS ..... 181

*Bonnie S. Slovis • Kenneth L. Brigham*

Imaging Procedures	181
Evaluation of Lung Function	181

## 17 OBSTRUCTIVE LUNG DISEASE ..... 185

*Bonnie S. Slovis • Kenneth L. Brigham*

Pathophysiology of Air Flow Obstruction	185
Asthma	186
Chronic Obstructive Pulmonary Disease	187
Bronchiectasis	189
Cystic Fibrosis	189
Treatment	190

## 18 INTERSTITIAL AND INFILTRATIVE LUNG DISEASE ..... 194

*Bonnie S. Slovis • Kenneth L. Brigham*

Pathophysiology and Clinical Manifestations	194
---	-----

## 19 DISORDERS OF THE PLEURAL SPACE, MEDIASTINUM, AND CHEST WALL ..... 201

*Bonnie S. Slovis • Kenneth L. Brigham*

Pleural Disease	201
Mediastinal Disease	203
Chest Wall Disease	203

## 20 NEOPLASTIC DISEASES OF THE LUNG ..... 206

*Bonnie S. Slovis • Kenneth L. Brigham*

Risk Factors	206
Pathology	206
Clinical Presentation	206
Diagnosis and Evaluation	207
Solitary Pulmonary Nodule	208
Treatment and Prognosis	209