

HIGH- ARCHITECTURE LIGHTS

Hu Yanli He Jiabin

5

Dalian University of Technology Press

HIGH- ARCHITECTURE LIGHTS

Hu Yanli He Jiaxin



5

Dalian University of Technology Press

CONTENTS

Architects 49	008	Royal Archive Centre BU Landmark Complex
molo design + d/dt Arch + Frank la Rivière Architects inc	018	Nebuta-no-ie Warasse
Jackson Clements Burrows Architects	024	Golden Crust Bakery Henley Street Trojan House
Jorge Hernandez de la Garza	036	Smooth Building
SAOTA - Stefan Antoni Olmesdahl Truen Architects	042	Dakar Sow Sow Geneva Victoria 73
Henning Larsen Architects	056	Harpa - Reykjavik Concert Hall and Conference Centre Spiegel HQ Umeå School of Architecture Viborg Town Hall
Reiulf Ramstad Arkitektur	078	Fagerborg Kindergarden Trollwall Restaurant
Stein Halvorsen AS	086	Solrosen Kindergarten Viken Skog Headquarter
2020 Liverpool	094	The Alsop High School
Teo Hidalgo Nácher	098	Ripolles-Manrique House
Dominique Coulon et associés	102	"Josephine Baker" Group of Schools in La Courmeuve House for deficient persons Library in Anzin Music School and Areas for Culture
Jean Bocabeille Architecte	128	Biscornet Picard Nursery
LAN Architecture	138	eDF Archives Centre Student Residence
Tank Architectes	148	Levi Strauss High School
Benthem Crouwel Architecten	152	Academic Centre for Dentistry Deutsches Bergbau Museum Elicium RAI
BOETZKES HELDER Architects	164	Villa DVT
Hofman Dujardin Architects	168	Villa Geldrop
Frederico Valsassina Arquitectos	174	Alcatel Head Office
LGLS Arquitectos	180	University Canteen and Restaurant
Nelson Resende Arquiteto	184	House in Praia Verde House in Souto
Atelier Nuno Lacerda Lopes	192	Gandra School Valongo House
Iñaki Garai (ACXT Arquitectos)	202	242 Social Housing Units in Salburua CEIBS Business School
Javier Pérez Uribarri (ACXT Arquitectos)	216	IDOM Headquarters Bilbao

Aranguren + Gallegos Arquitectos	222	ABC Museum, Illustration and Design Centre
[baragaño]	230	Metal Foundation [sLAB] Cruise Ship Terminal in Bilbao [the love boat]
CASA Sólo Arquitectos	240	Los Arcos del Mar Menor University Hospital Santa Lucía General University Hospital
C O R & Asociados	256	Funeral Home and Garden in Pinoso Music Hall and House in Algueña MUCA
Donaire Arquitectos	268	New Theatre in Almonte Office and Services Building in the Port of Roquetas De Mar Social Centre in La Av. De La Paz Warehouse Rehabilitation of Public Library and Music School
EQUIP Xavier Claramunt	284	Hotel Acta Mimic Hotel Hospes Palma
Josep Miàs	296	Annexa-Joan Puigbert Primary School in Girona iGuzzini Illuminazione Spain Headquarters Rubí Market and Town Hall Offices Topographic House
Larraz Arquitectos	314	Nursery School in Pamplona Shelter Home for the Homeless
Luis Machuca & Associates	322	Faculty Building, Málaga University
Sol89 María González & Juanjo López de la Cruz	326	Training Centre of Town Hall
Unia Arquitectos	332	SPEE Sevilla
Virai Arquitectos	336	Institutional Winery "La Grajera" Secondary School in Miranda de Ebro
kopper architektur	344	Anna Spiegel Research Building
Zechner & Zechner ZTGmbH	350	Stella Zwei Residential Building
CHRIST.CHRIST. associated architects	354	House R House S
Ahlbrecht Felix Scheidt Kasprusch	362	Haus der Essener Geschichte
Scheidt Kasprusch Architekten	366	Research & Sports Hall of Humboldt University
Pablo Horváth Architekt SIA/SWB	370	Apartment Buildings J. Buff Grisons College of Education
Damilano Studio Architects	378	Gazoline Petrol Station Oficina Vidre Negre
Studio Marco Piva	392	Move Hotel
Markus Scherer	396	Winery Nals Margreid
Studio Ricatti	402	Diesel Headquarter

HIGH- ARCHITECTURE LIGHTS

Hu Yanli He Jiaxin

5

CONTENTS

Architects 49	008	Royal Archive Centre BU Landmark Complex
molo design + d/dt Arch + Frank la Rivière Architects inc	018	Nebuta-no-ie Warasse
Jackson Clements Burrows Architects	024	Golden Crust Bakery Henley Street Trojan House
Jorge Hernandez de la Garza	036	Smooth Building
SAOTA - Stefan Antoni Olmesdahl Truen Architects	042	Dakar Sow Sow Geneva Victoria 73
Henning Larsen Architects	056	Harpa - Reykjavik Concert Hall and Conference Centre Spiegel HQ Umeå School of Architecture Viborg Town Hall
Reiulf Ramstad Arkitekter	078	Fagerborg Kindergarden Trollwall Restaurant
Stein Halvorsen AS	086	Solrosen Kindergarten Viken Skog Headquarter
2020 Liverpool	094	The Alsop High School
Teo Hidalgo Nacher	098	Ripolles-Manrique House
Dominique Coulon et associés	102	"Josephine Baker" Group of Schools in La Courneuve House for deficient persons Library in Anzin Music School and Areas for Culture
Jean Bocabeille Architecte	128	Biscornet Picard Nursery
LAN Architecture	138	eDF Archives Centre Student Residence
Tank Architectes	148	Levi Strauss High School
Bentham Crouwel Architekten	152	Academic Centre for Dentistry Deutsches Bergbau Museum Elicium RAI
BOETZKES HELDER Architects	164	Villa DVT
Hofman Dujardin Architects	168	Villa Geldrop
Frederico Valsassina Arquitectos	174	Alcatel Head Office
LGLS Arquitectos	180	University Canteen and Restaurant
Nelson Resende Arquiteto	184	House in Praia Verde House in Souto
Atelier Nuno Lacerda Lopes	192	Gandra School Valongo House
Iñaki Garai (ACXT Arquitectos)	202	242 Social Housing Units in Salburua CEIBS Business School
Javier Pérez Uribarri (ACXT Arquitectos)	216	IDOM Headquarters Bilbao

Aranguren + Gallegos Arquitectos	222	ABC Museum, Illustration and Design Centre
[baragaño]	230	Metal Foundation [sLAB] Cruise Ship Terminal in Bilbao [the love boat]
CASA Sólo Arquitectos	240	Los Arcos del Mar Menor University Hospital Santa Lucía General University Hospital
C O R & Asociados	256	Funeral Home and Garden in Pinoso Music Hall and House in Alguenía MUCA
Donaire Arquitectos	268	New Theatre in Almonte Office and Services Building in the Port of Roquetas De Mar Social Centre in La Av. De La Paz Warehouse Rehabilitation of Public Library and Music School
EQUIP Xavier Claramunt	284	Hotel Acta Mimic Hotel Hospes Palma
Josep Miàs	296	Annexa-Joan Puigbert Primary School in Girona iGuzzini Illuminazione Spain Headquarters Rubí Market and Town Hall Offices Topographic House
Larraz Arquitectos	314	Nursery School in Pamplona Shelter Home for the Homeless
Luis Machuca & Associates	322	Faculty Building, Málaga University
Sol89 María González & Juanjo López de la Cruz	326	Training Centre of Town Hall
Unia Arquitectos	332	SPEE Sevilla
Virai Arquitectos	336	Institutional Winery "La Grajera" Secondary School in Miranda de Ebro
kopper architektur	344	Anna Spiegel Research Building
Zechner & Zechner ZTGmbH	350	Stella Zwei Residential Building
CHRIST.CHRIST. associated architects	354	House R House S
Ahlbrecht Felix Scheidt Kasprusch	362	Haus der Essener Geschichte
Scheidt Kasprusch Architekten	366	Research & Sports Hall of Humboldt University
Pablo Horváth Architekt SIA/SWB	370	Apartment Buildings J. Buff Grisons College of Education
Damilano Studio Architects	378	Gazoline Petrol Station Oficina Vidre Negre
Studio Marco Piva	392	Move Hotel
Markus Scherer	396	Winery Nals Margreid
Studio Ricatti	402	Diesel Headquarter



Royal Archive Centre

Nakhon Pathom, Thailand



1 STORAGE
2 STORAGE
3 WORKING AREA
4 DOCUMENT STORAGE
5 LOADING TOWER

5th Floor Plan



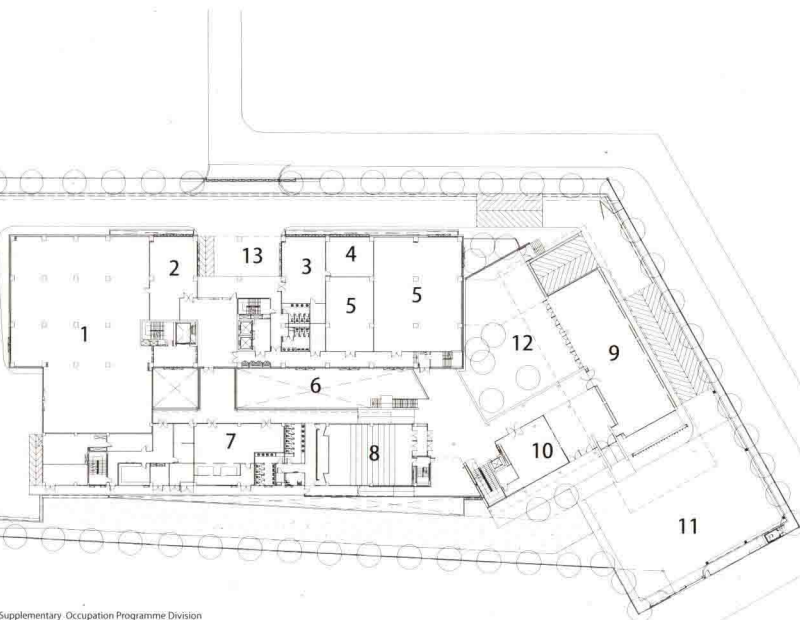
1 STORAGE - Supplementary Occupation Programme Division
2 ROYAL ARCHIVES
3 BOOK STORAGE
4 BOOK STORAGE
5 MICROFILM ROOM
6 ARCHIVES TOLAR
7 LIBRARY Audio Visual Service
8 LIBRARY Archives Service
9 LIBRARY Rare Book Service

3rd Floor Plan



1 STORAGE - Supplementary Occupation Programme Division
2 WORKING AREA
3 OFFICE AND MEET
4 CONFERENCE ROOM
5 LOADING OFFICE
6 OFFICE
7 LIBRARY
8 PERMANENT EXHIBITION ROOM

2nd Floor Plan



Ground Floor Plan

1 STORAGE - Supplementary Occupation Programme Division
2 OFFICE
3 OFFICE - The office of His Majesty's Principal Private Secretary
4 DOCUMENT PROCESSING ROOM
5 ARCHIVES
6 SUNKEN COURT
7 CAFETERIA
8 AUDITORIUM
9 TEMPORARY EXHIBITION ROOM
10 INFORMATION AND BOOK STORE
11 PLAZA
12 GARDEN COURT
13 LOADING AREA

Royal Archive Centre is the central archive for important historical evidence related to Thai Royal Monarchy including manuscripts, photographs and other historical records. Previously these invaluable materials were stored separately in various sites. Therefore, the brief of this project was called for a permanent central royal archive building as a place for storing, researching and conserving any information related to the royal family – Chakri Dynasty. The main areas include: printed documents / objects archives, archives area, permanent exhibition space, a display area of the King Rama VI's achievements and biographies, temporary exhibition space, conference room, public library, office and car park.

Architectural Solution

- Zoning strategy. The project can be categorized into three main zones:

1. Public zone – the areas where public users have full access i.e. exhibition rooms, the library (designated area) and a 100-seat conference room. They are located in the front part of the building for easily accessible purpose.

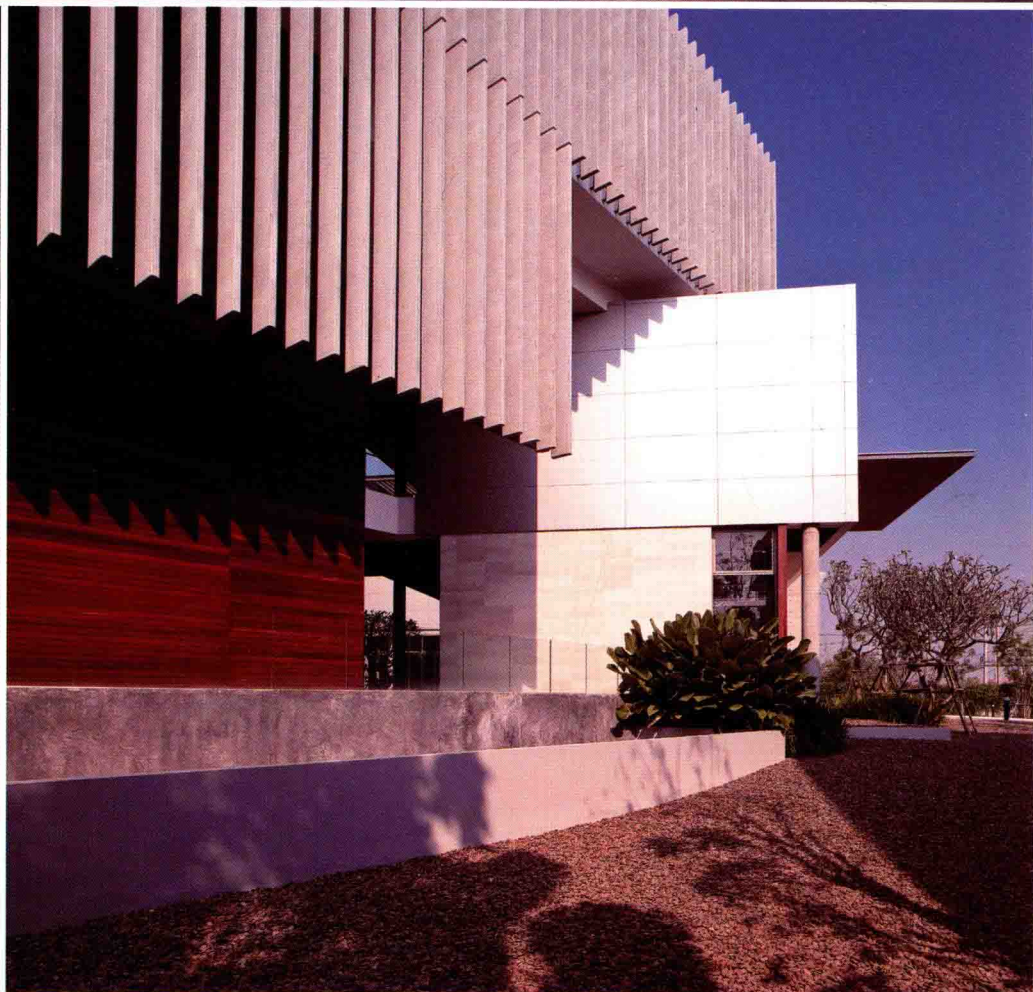
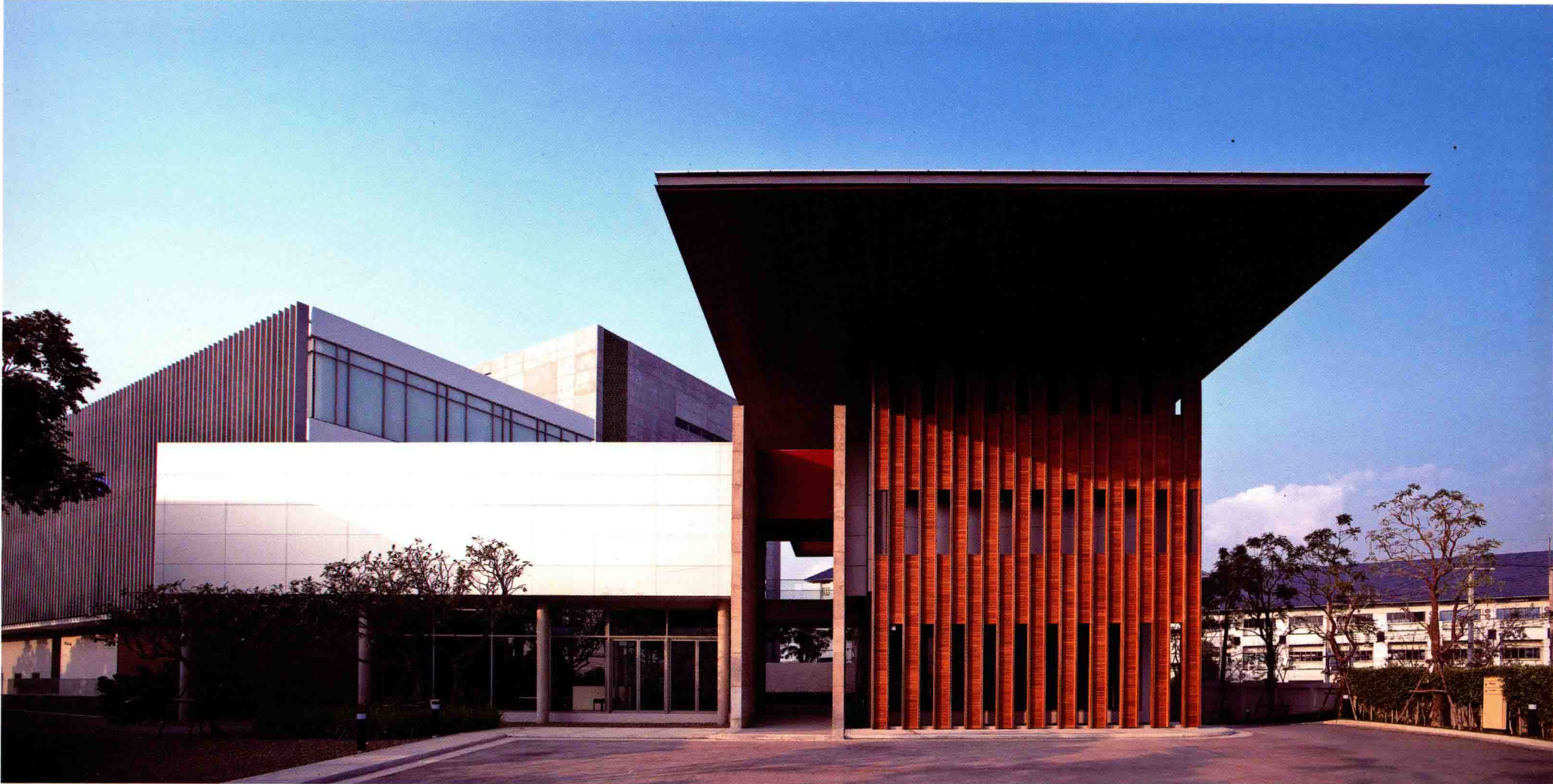
2. Private zone – staff office area.

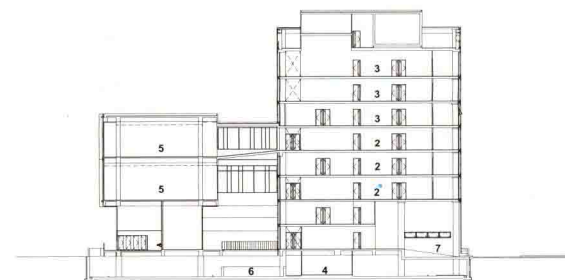
3. Secured zone – archives storage rooms where only authorized staff can have access.

Three building forms are, therefore, a direct translation of this zoning strategy analysis. They are connected by a central courtyard which is sometimes used for holding official functions by Office of His Majesty's Principal Private Secretary as well.

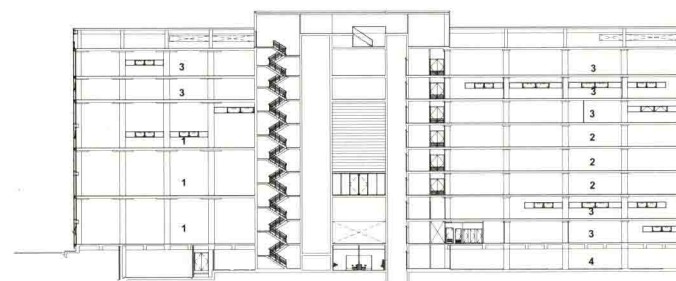
- Modern Thai architecture. Due to the narrow drive way to the main building entrance, the front of the building is designed to reach forward to receive the visitors. The canopy at the drop-off area is made of red wood, a warm gesture to welcome guests. Other metaphoric approach to communicating the essence of traditional Thai architecture can be found elsewhere such as teak textured wall at the main entrance. The large red entry doors, derived from entries commonly found in traditional Thai palace, are designed to reflect the importance of archives created during Chakri Dynasty.

- Energy conservation. The project site is a rectangular shape with east-west orientation. The building functions do not require much natural daylight therefore the buildings are designed to be stacked masses to create shadows casting over one another, reducing heated surface area. The 8-storey archives building is built with mostly solid walls and situated at the back blocking direct sunlight from the west, sheltering the library building in the south-east. All archives storage rooms have interior wall insulation to prevent any heat gain. On the eastern facade of the library, vertical precast concrete panels are designed to protect the interior space from direct sunlight.



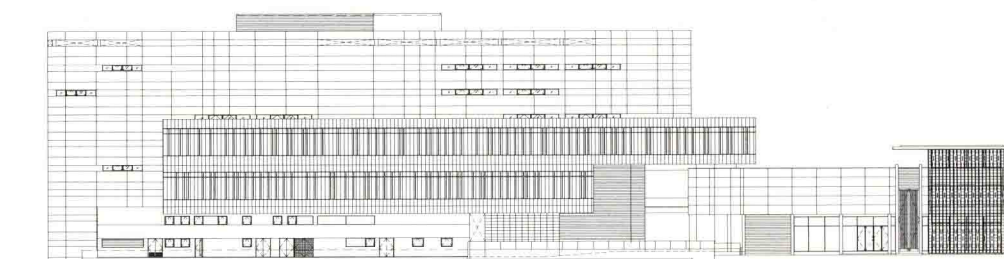


Cross Section

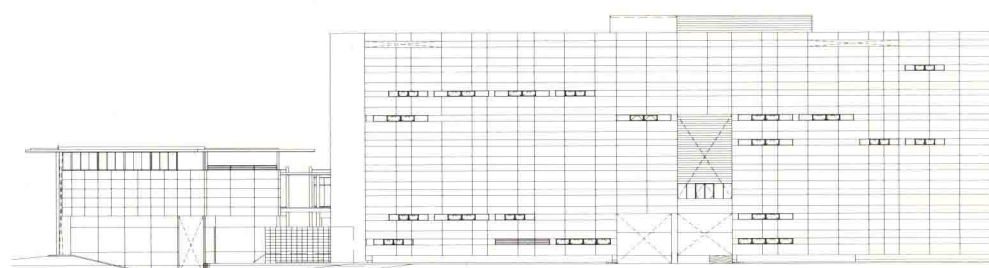


- 1 STORAGE-Supplementary Occupation Programme Division
- 2 ROYAL ARCHIVES
- 3 DOCUMENT STORAGE
- 4 PARKING
- 5 LIBRARY
- 6 SUNKEN COURT
- 7 LOADING AREA

Longitudinal Section

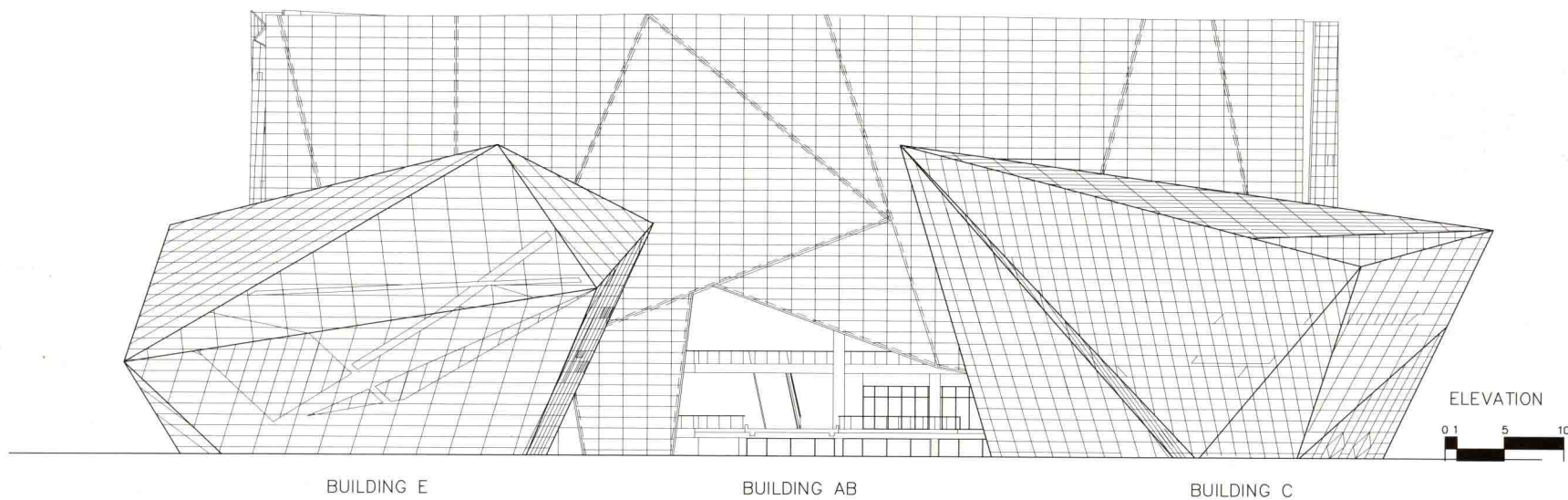


Front Elevation



Back Elevation







Architects 49

Thailand

BU Landmark Complex

Pathum Thani, Thailand

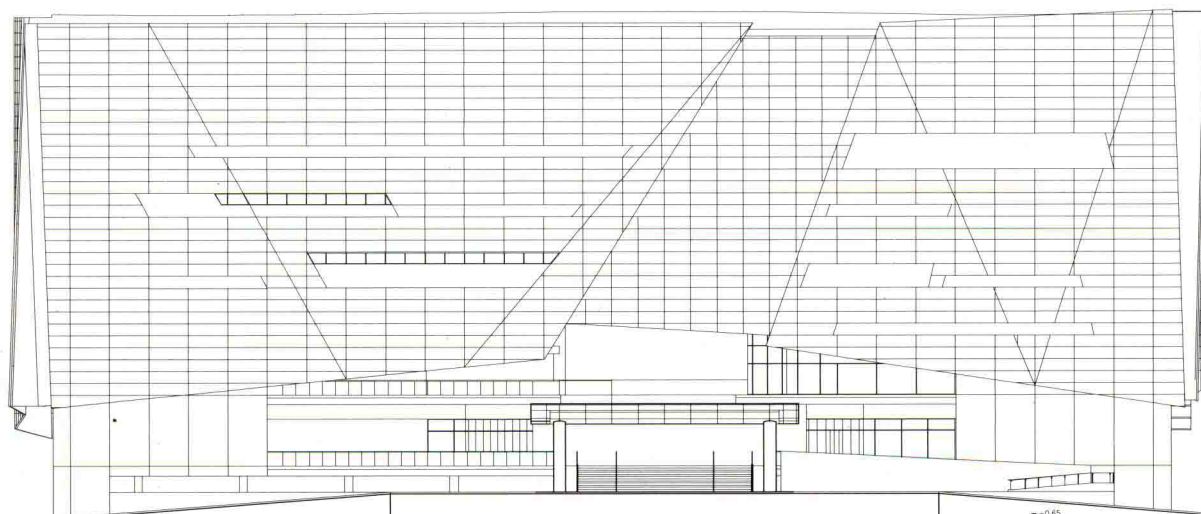
The Bangkok University Landmark Complex is initiated on the necessities that are to reorganize the frontal area of the campus and to create an outstanding approach for the campus's entrance. In addition to the mentioned requirements, the School of Business Management also required some supplementary facilities, for example, classrooms, seminar rooms, lecturers' office and lecture halls. Then, the new complex is emerged from the particular architectural form evoking the symbol of the university, a diamond.

A group of buildings as a "landmark" is a fundamental concept of the project. The created architectural form is evocative of the presence of the university, its symbol and also allows students and visitors to approach the campus easily.

The concept of a learning space, in which students search for refining themselves through learning process—in order to obtain knowledge and become qualified human resources—can be illustrated by analogy with a lapidary process. In common with a learning process, a lapidarian gradually transforms a stone into the precious diamond through cutting and polishing elaboration. Thus, the concept coincides precisely with the university's vision that aims to be "creative university".

The site planning considers the campus's traffic system and provides two additional gates in order to facilitate the traffic flow efficiently. The landscape design plays a role of bringing the complex to become more outstanding. The pond is placed in the front of the building group so it creates a reflecting effect of the building forms. Moreover, it also serves as a natural barrier as well as the campus's reservoir.

Principally, the design considers visual and functional continuity between the front area and the rear of the campus so the entire campus is inextricably intertwined.



ELEVATION

