

中国

# 新疆哈密企业大观

新疆人民出版社

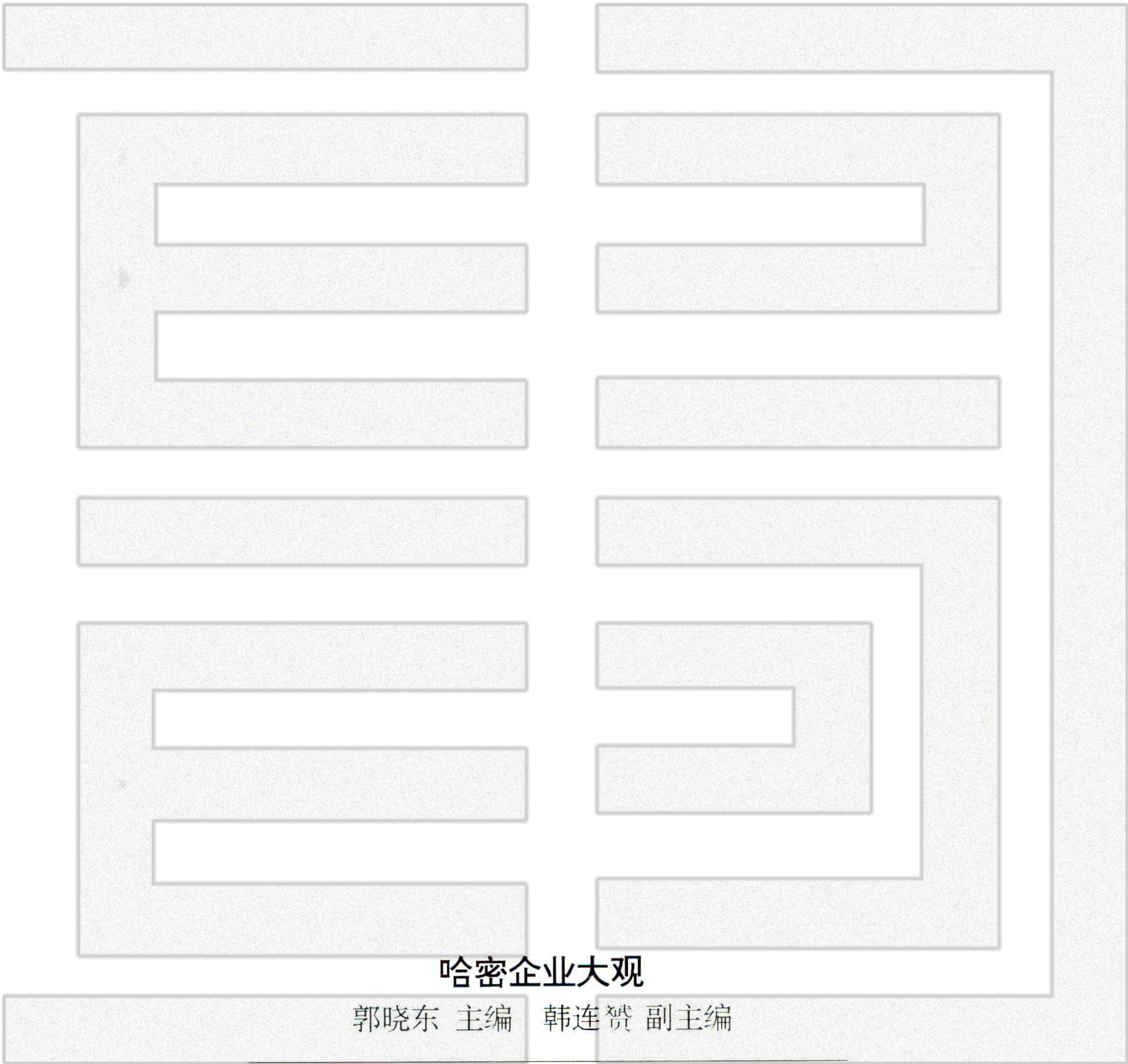


# 新疆哈密企业大观

新疆人民出版社



责任编辑：木 冉  
封面设计：安 康



哈密企业大观

郭晓东 主编 韩连赞 副主编

新疆人民出版社出版发行  
(乌鲁木齐市建中路 54 号 邮政编码 830001)  
深圳(香港)景达彩印制版公司  
850×1168 毫米 16 开本 6.25 印张 30 千字  
1994 年 8 月第一版 1994 年 8 月第一次印刷

ISBN7-228-03141-5 / F·199 定价: 48 元



哈密企业大观编委会

主任:黄昌元 阿不都热合曼·克然木  
副主任:顾中秦 秦培荣 玉苏甫·牙合甫  
托乎提汗·司马义  
编委:李春生 韩 彧 赵录信 许美杰  
于学智 潘长茂 李彦华 哈德尔  
张锡林 莫合曼提·巴拉提 潘宝生  
乌尤甫 何根亭 范天敏 轩辕国新  
主编:郭晓东  
副主编:韩连贺  
编辑:王建中 王德全  
摄影:郭晓东 韩连贺



## 目

## 录

• 1 • 扩大开放再塑丝路辉煌

• 3 • 建设中的吐哈油田

• 4 • 哈密铁路分局

• 6 • 乌鲁木齐铁路局哈密桥梁厂

• 8 • 新疆哈密交通开发总公司

• 12 • 哈密公路总段

• 13 • 哈密地区汽车运输总公司

• 14 • 新疆哈密巨轮有限责任公司

• 16 • 哈密地区电力工业管理局

• 18 • 哈密矿务局

• 20 • 前进中的新疆雅满苏矿

• 21 • 新疆哈密金矿

• 22 • 哈密市金矿

• 23 • 巴里坤县芒硝矿

• 24 • 新疆哈密碱厂

• 25 • 哈密地区化工厂

• 26 • 哈密市黄腐植酸厂

• 27 • 哈密市化工实业总公司

• 28 • 新疆兵团哈管局红山化工厂

• 29 • 哈密联营油漆厂

• 30 • 哈密地区印刷厂

• 31 • 新疆哈密地区棉纺织厂

• 32 • 巴里坤县毛纺厂

• 33 • 哈密地区红星皮革厂

• 34 • 哈密市民族绣品厂

• 34 • 哈密市福星福利总公司

• 35 • 哈密飞艇超硬材料总公司

• 36 • 哈密地区面粉厂

• 37 • 哈密大营房国家粮食储备库

• 37 • 巴里坤电力公司

• 38 • 新疆哈密市啤酒厂

• 40 • 新疆巴后矿泉水饮料有限公司

• 41 • 巴里坤县农机修造厂

• 42 • 新疆哈密制药厂

• 43 • 哈密地区人民医院

• 44 • 哈密地区钢铁厂

• 45 • 哈密地区水泥厂

• 46 • 哈密市水泥厂

• 47 • 兵团哈管局红星水泥厂

• 48 • 哈密石材厂

• 49 • 哈密市钢窗厂

• 50 • 哈密地区建筑公司

• 51 • 哈密市建筑安装集团公司

• 52 • 哈密矿务局第三建筑工程公司

• 52 • 新疆疆澳电子科技有限公司

• 53 • 哈密市房地产开发总公司

• 54 • 哈密市市政工程总公司

• 55 • 哈密市乡镇企业总公司

• 56 • 哈密市亚克西食品有限责任公司

• 57 • 哈密地区石油公司

• 58 • 哈密地区物资局

• 60 • 哈密百货站

• 61 • 哈密市第二百货商场

• 62 • 哈密地区五金交电化工总公司

• 63 • 哈密市百货公司

• 63 • 哈密地区茶叶畜产公司

• 64 • 哈密地区医药药材公司

• 64 • 哈密地区煤建公司

• 65 • 哈密地区棉麻公司

• 65 • 哈密矿务局第二建筑公司

• 66 • 哈密农垦外贸总公司

• 67 • 哈密地区对外贸易总公司

• 67 • 美食家饭庄

• 68 • 哈管局华宇宾馆

• 69 • 中国工商银行哈密地区中心支行

• 70 • 中国农业银行哈密地区中心支行

• 71 • 中国人民建设银行哈密地区中心支行

• 72 • 中国银行哈密地区支行

• 73 • 中国人民保险公司哈密地区中心支公司

• 74 • 新疆兵团保险公司哈管局分公司

• 74 • 哈密金银城市信用社

• 74 • 哈密晶华宝玉工艺厂

• 75 • 哈密林场

• 76 • 伊吾军马场

• 78 • 哈管局火箭农场

• 80 • 哈管局黄田农场

封二 加格达宾馆

封底 新疆哈密市锅炉厂



# 扩大开放再塑丝路辉煌

哈密位于新疆维吾尔自治区东部,总面积 15.3 万平方公里,人口 42 万,有维、汉、哈、蒙等 28 个民族,辖两县一市,含 2 个区、35 个乡、5 个镇。境内驻有哈密矿务局,兵团农场哈密管理局,哈密铁路分局,吐哈油田生产、科研、生活基地建设指挥部和伊吾军马场等中央、自治区直属单位及所属厂矿企业和农牧团场。

哈密地域辽阔,资源富饶,能源充足,交通发达,社会稳定,民族团结,边贸昌盛,风光可掬,是开发祖国西部的一块宝地。早在汉唐,这里就是闻名于世的“丝绸之路”北新道咽喉要地,有过“……职责不绝、商旅相继”的兴盛时期,曾为沟通中西经济和文化交流作出过巨大贡献。如今她是东疆政治、经济、文化的中心。

改革开放以来,哈密的经济建设突飞猛进,已探明的矿产达 78 种,占优势的有煤、铁、钛、金、铜、镍、锰、钒、磷、盐、芒硝、石材等。其中,铁矿石储量达 2.4 亿吨,煤 5708 亿吨,铜镍矿 120 吨,石灰石 1 亿吨以上;正在勘探、开发的石油、天然气前景极为可观。已形成具有一定规模的煤炭、电力、纺织、化工、建筑、建材、冶金、采矿、造纸、制药、印刷、食品、皮革等门类的工业生产体系。辖区内拥有工业企业 253 个,年创工业总产值 84027.5 万元。一些重点企业生产的元明粉、麻黄素、硅铁、皮革、地毯、脱水菜、硫化碱、钨砂都已成为出口创汇产品。

哈密气候温和、干燥,天山积雪为戈壁良田提供了丰富的地下水资源,适宜发展农牧业生产。全区现有可垦土地 500 余万亩,已开垦耕地 100 余万亩,年播种面积 80 余万亩。哈密昼夜温差大,光照充足,出产的名优哈密瓜以及质量堪为上乘的五堡大枣、哈密大麦、啤酒花、羊毛、棉花等,给哈密的轻纺、食品加工、酿造、制革等提供了丰富的原料。县市、兵团、铁路、三道岭矿区兴办的乡镇企业和二三产业不断填补着地区工业门类的空白。到 1993 年底,全区乡镇企业已达 7206 家,年产值达 17657 万元。乡镇企业产品中,人造金刚石、胡萝卜汁、精制葡萄干、矿泉水等远销区内外,钨砂还打入了国际市场。乡镇企业在地区农业经济中已成为名副其实的“半壁江山”。

哈密交通便利,铁路第二亚欧大陆桥和公路 312 国道横穿境内。正在修建中的兰新铁路复线全线贯通后,哈密进出货运量即可成倍增长,商贸、外贸、边贸将很快跨上新的台阶。万门程控电话的开通,亚欧光缆工程的竣工,哈密航线的即将恢复,为海内外客商更好地提供交通和通讯服务。

在哈密地区内中央、自治区驻哈企业,具有法人资格的共有 38 个,其中,西北最大的露天煤矿、纯碱厂、桥梁厂均建在哈密,尤其是近两年,吐哈油田生产、科研、生活基地和石油化工基地的建设,又为振兴哈密经济提供了机遇。抓住机遇、加快发展,是全区各族人民的共同愿望。地委、行署、兵团哈管局、哈密铁路分局、哈密矿务局、吐哈油田指挥部都分别制定了一系列对外开放的优惠政策。哈密地委、行署提出的“以东联促西拓、北出,以科技进步优化产业结构,以外引内联促优势资源开发和借资金、借技术、借名、借力”的方针及外贸、边贸的发展,不但吸引了独联体、蒙古国及巴基斯坦等国客商纷纷来哈密投资办厂、经商旅游,也大大增加了哈密西拓、北出的强度。1994 年地委又提出“淡化地方与中央、自治区驻哈单位‘你’、‘我’观念,模糊彼此界限,融合各方优势,发展区域经济”的新思路,使哈密各族各界人民、各方各路企业进一步增强了团结协作、携手并进的合力,它必将使瓜乡改革开放和建设步伐大大加快。

借《哈密企业大观》出版之际,我谨代表哈密地委、行署和地区 42 万各族人民,热忱欢迎国内外客商来哈密经商旅游、投资开发、兴办企业!

哈密,永远向区内外、国内外敞开大门;永远是你的忠诚朋友、合作伙伴。

哈密,借助广大企业家的聪明才智和各族人民的奋力拼搏,借助海内外八方志士的精诚合作、无私援助,必将再展雄风、再塑辉煌!

中共哈密地委书记:黄 昌 元

哈密行政公署专员:阿不都热合曼·克然木



## EXPANDING OPENING REFORMING SIK ROAD

SITUATED in the east of Xingjiang Weiwuer Autonomou Region, HAMl covers the area of 153,00 km<sup>2</sup> with its total population of 420,000 including 28 nationalities such as Wei nationality, Han nationality, HaSake nationality, Menggu nationality, and etc. Two counties and one city including 2 cities, 35 countryside, 5 towns are under its jurisdiction and factories, mines, agricultra and animal husbandry areas under the central government and the autonomous region such as Haimi Mineral Bureau, Ha mi Administration Bureau of Farms Managed by uilitary, Hami Railway Sub-branch, production, resenrching and living base constrution supervising departments for Tuha Oil field and Yiwu Horse Land for Military use. Scatter in Hami.

WITH its wide area, about resources, adequate energy and convient transportation, it's blessed with stable social order, union of all nationalities, prosperous boardary trades and beautiful landscape. Early in the ancient Han and Tang dynasty, Hami was the important place in the Beijing line of the well-known Silk Road. Attracting many people and traveler to come, it once made great devotion to the exchange between Chinese and Western economy and culture. Today it is the political, economic and cultural centre of east Xingjiang.

SINCE the reforming and opening to the outside world, the economy of Hami has made great progress. 78 kinds of minerals have been discovered with some takong advantage such as coal, iron, titanium, gold, copper, nickel, manganese, vanadium, phosphorous, salt, mirabilite, stone and so on. Among them, reserves of iron reach 2.4 billion tons, coal 5708 billion tons, copper and nickel 120 tons, limestone above 1 billion tons; oil and gas field under discovering and developing had a wonderful future. A considerable scale industry system including coal, electricity, textile, chemical, construction, building material, metallurgy, mining, paper making, pharmacy, printing, food, leather - processing and others has been formed. The number of the enterprises in the reigon is 253 with the annul revenue as Rmb 84027.5 million. Yuanming powder ma Huangsu, Silicon-iron, leather, carpets, dried vegetable, Sulphurised alkali and tangsten ore produced by some major enterprises have been exported and made foreign currency.

With its mild, dry climate and the underground water from the snow covering Fianshan Mantain, Ha mi is appropriate for the development of agriculture and animal husbandry. The reigon has more than 5,000,000 miles of land wich can be farmed and 1,000,000 miles of cultivated land with over 800,000 miles of annual seeding. The well-know Hami watermelon, Wubao Chinese date, Hami rye, beer flower, wool, cotton, benefited from the adequate sunlight night enrichs the material for the light industry, textile, food-and town-owed enterprises hold by the county, city, military been filling new category into the present industry system. By the end of 1993, the number of such enterprises has reached 7206 with their total annual revenue of RMB 17657 million. Among the products made by these enterprises, manwater have been marketed both in and out of the reigon while tungsten has been marteted in the international market. The countryside and town-owed enterprised have almkost held half of the agricultural economy in the reigon.

The transportation in Hami is convient with the 2nd Asia-Europe Contieent Bridge and 312 National Highway through it, when the multiple track of Lanzhou-Xinjing Railway under construction now is completed, the amount of in-and-out cargo will be doubled and commercial, foreign, and boardary trading will take a new step. The achievement of the starting 10,000 exchange telephone, the construction of Asia-Europelight cable, and the renewal of Hami air line will provide the guests and businessmen poth from overseas and home with better service.

Among 38 leagal-person enterprises under certral government and the autonomous reigou in Hami, the opening coal mines, pure soda factories, bridge factories are the biggest in North-west China. Especially in recent 2 years, the construction of the living, researching, producing base for Tuha Oil field and Oil and chemical base creates an opportunity for the promotion of the economy in Hami. Seizing the opportunity and speeding the development TS the common desire of all the nationalities in the area. The prefectural Party committee, admimistrative office, Hami military administrative bureau, Hami railway sub-branch, Hami mineral bureau and command post of Tuha oil field have worked out a series of fawourable opening policies respectively. Hami prefectural Party committees and the administrane office pointed out "promote the development in the west and north by united with the east, to upgradethe industry structure by developing science and technology, to develop the advantages and resources by introducing foreign investment and uniting with other parts of China" and under this policy, businessmen in the lountries of Independent Urion, Mongolia and Pakistan have been attracted to invest on industry and travel. In 1994, the prefectural Party committee pointed out again "to reduce the distance between each other, to unite with each other and developereigon economy together", and lead s all the nationalities and enterprises into a union, and enhance the cooperation, which must speed the reforming and developing step of Hami.

On behalf of the Hami prefectural Party committee, the administrative office and 420,000 people, I avail of the publication of <<The Grand Sight on the Enterprises in Hami>> to welcom domestic and overseas guests and businessmen to do business, travel, invest and develop, set up enterprises in Hami.

Hami, open its door to both the other parts of China and foreign countries forever; The Party and government, the enterprises in Hami will be your sincere friend and partner forever.

Hami, by the wisdom of the entrepreneur and hard-working of the people, through the sincere copperation and unselfish support from people allover the world, will display its ancient splendour.

The Secretary of Hami prefectural Party Committee: Huang Clang-Yuan  
The Director of Hami-Administrative Office: ABDOU REHOMAN. KERENMU



# 建设中的吐哈油田



摄影：劉振



# 哈密铁路

HAMI RAILWAY

哈密铁路分局位于亚欧大陆桥西段。辖区东起疏勒河，西至哈密计 46 个车站，34 个站、段级企业、事业单位。运营正线总长 537.5 公里，职工 16200 人，拥有固定资产总值 101280 万元。

在江泽民总书记“团结拼搏，创优争先”亲笔题词的鼓舞下，分局全体干部、职工共同努力，创造了闻名全国的“哈密精神”，“柳园人风格”，被誉为“墙外戈壁滩，墙内小江南”的企业文化。获得了全国思想政治工作优秀企业和自治区一级企业称号。运输生产各项经济技术指标逐年增长，1993 年与 1982 年相比，旅客发送量增长 53.2%，货物发送量增长 30.8%，客货运输换算周转量增长 119.4%，运输全员劳动生产率增长 64.2%。

分局运输设备已达到全路先进水平，先后实现现代化调度集中、6502 电气集中联锁、移频单线自动闭塞、牵引动力内燃化。兰新复线已部分投入运营，全线贯通在望。

分局本着运输为主，多元化经营的方针，建立多种经营、集体经营 27 家企业。经营建筑安装、矿冶开发、运输服务、建材生产、商业旅游等数十个项目，效益日益显著。

哈密铁路分局在社会主义市场经济体制下，正以坚实的步伐向前迈进，为哈密乃至全疆经济繁荣昌盛做出贡献。

It's located  
The total line is

By the end  
Style" and is h  
Reigon". Each  
risen 53.2 %, d

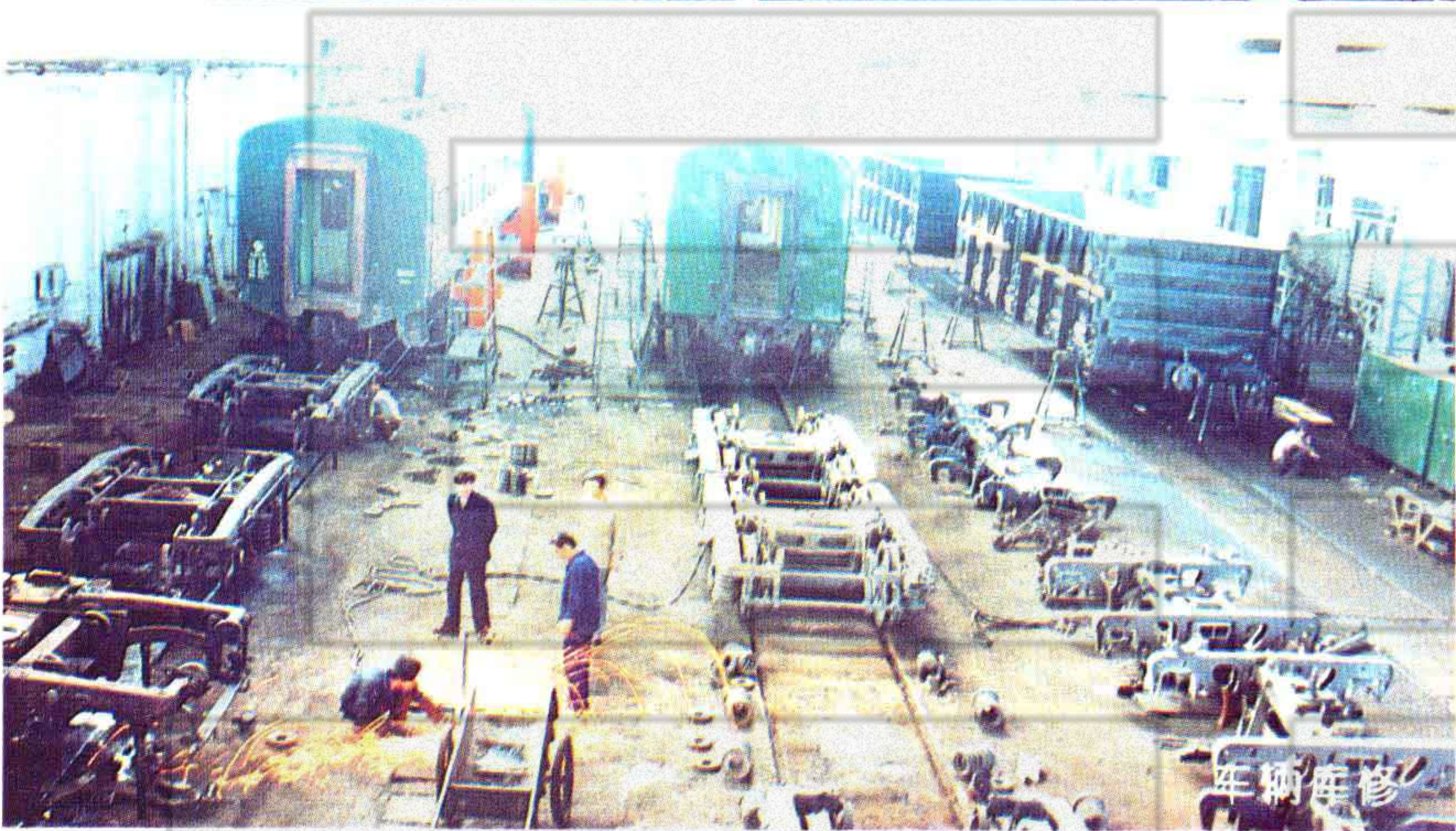
The sub-l  
-xing multiple

Based on  
metallurgy, tran

Hami railw



分局局长 韩永义



法人代表、分局长：韩永义  
电 话：2591

分局党委书记：韩永义  
电 话：2210

邮 编：839001  
地 址：新疆哈密市前进东路 264 号



# 路分局

UB-BRANCH

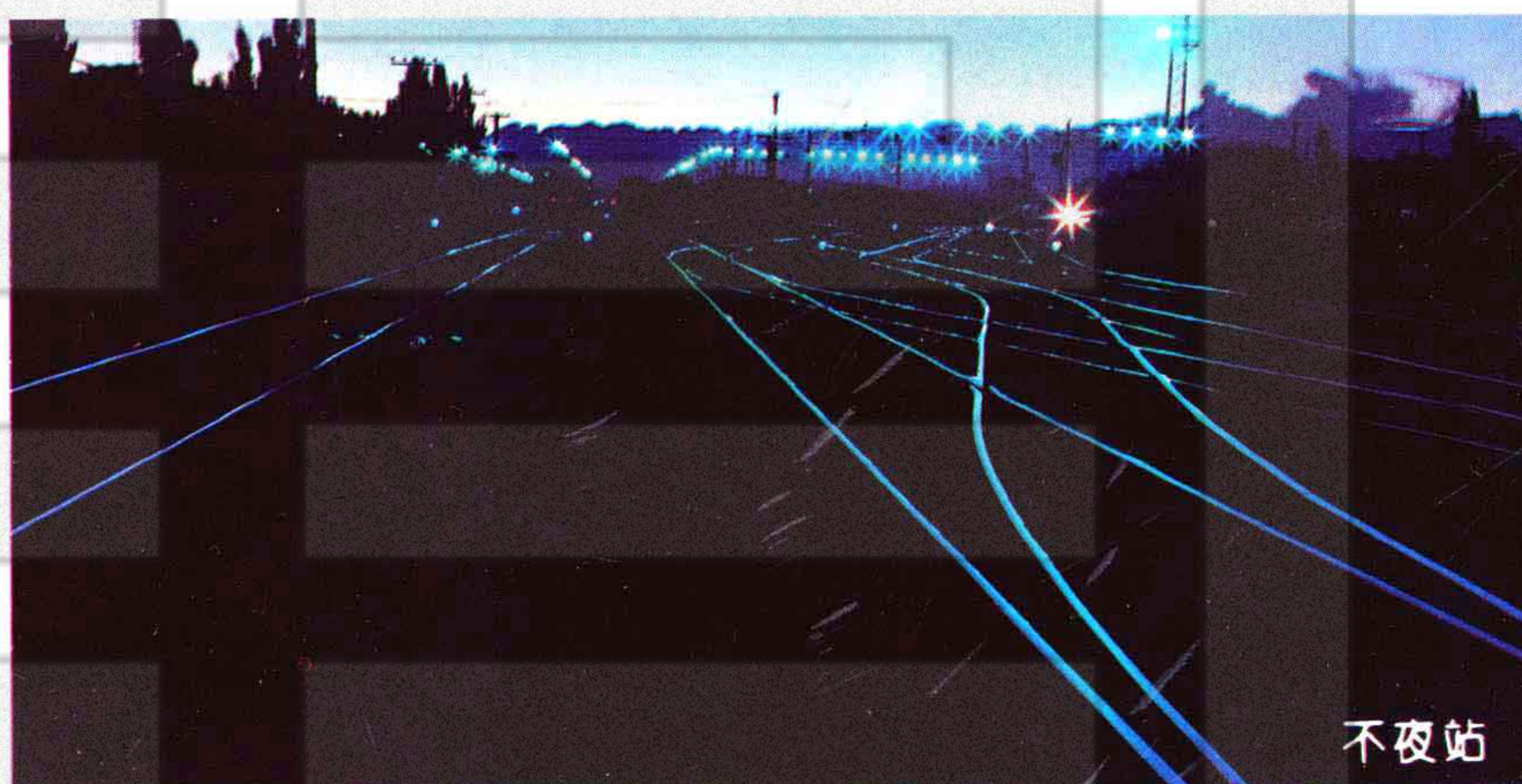
vest of Asia-Europe Continent Bridge. It starts at Shulei River in the east and ends at Liaodun including 46 railway stations. 34 station, post and administrative units. n with 16200 employees and fix asset of RMB 10,12,800,00.

at of "union, struggling, to be excellent" written by Jiang ze-min, the national party secretary, the brand work hard to create well-known "Spirit of Hami", "Liu Yuan as "Desert outside the wall, Mini South China inside the wall" and titled with "Excellent Enterprise of Political Work and First Class Enterprise of the Autonomous c and technical targets of transportation and production has risen year by year. Compared the situation in 1993 with that in 1982, amount of passenger delinery has cargo 30.8%, frequency of passenger and cargo 119.4% and efficiency of work 64.2%.

uses advanced equipment and achieved Modern Dispatching, 6502 Electricity Connection, One-Way Auto Shutting and internal-combustion tracting engine. Lian s been under operation and the whole line will be joined up soon.

y of keen on transportation and operating in diversified areas, the branch has set up 27 enterprises which operate construction and installing, developing mines and on service, production of building materials, commercial business and travelling.

branch, under the marketing economy system of socialism, is marching forward and making its devotion to Hami and the whole autonomous region.



摄影:牛培荣、黄永斌、何新禄





桥梁厂厂长:韩虎寅

哈密桥梁厂,是我国西北地区唯一生产预应力混凝土铁路桥梁、轨枕、电杆、弹条、扣件的中型现代化企业。建厂于1958年,拥有固定资产5000多万元,占地面积254万 $m^2$ ,现有职工1500人。

本厂有多年生产混凝土制品的丰富经验,工艺设备先进,技术力量雄厚,检测手段齐全,质量稳定可靠,除生产路用产品外,还生产大型屋面板、排水管等民用构件产品。

本厂以质量求生存,以信誉求发展,连续五年荣获哈密“重合同,守信用”单位,随时准备为各地用户提供满意的服务。

Hami bridge factory is the only middle-scale modern enterprise in the north-west China which can produce concrete railway bridges, sleepers, electrical rods, springs, fasteners. It was set up in 1958 with fixed asset of RMB 50 million and 1500 employee, covering land of 2,540,000 $m^2$ .

The factory has rich experience in concrete products. It's equipped with advanced instrument and technol-

ogy. With full-ranged inspection means, the quality is reliable. Besides the products for railway, it also produces large roof plate and pipes.

The factory is keen on the quality and reputation, and has been awarded "OBEYING CONTRACT KEEPING CREDIT" by Hami for 5 years. It'll supply satisfying service to customers all the time.

厂 长:韩虎寅

铁路电话:2119

地方电话:09022-235631

党委书记:刘松

铁路电话:2219

经营副厂长:郝建彬

地 址:哈密火车站北侧

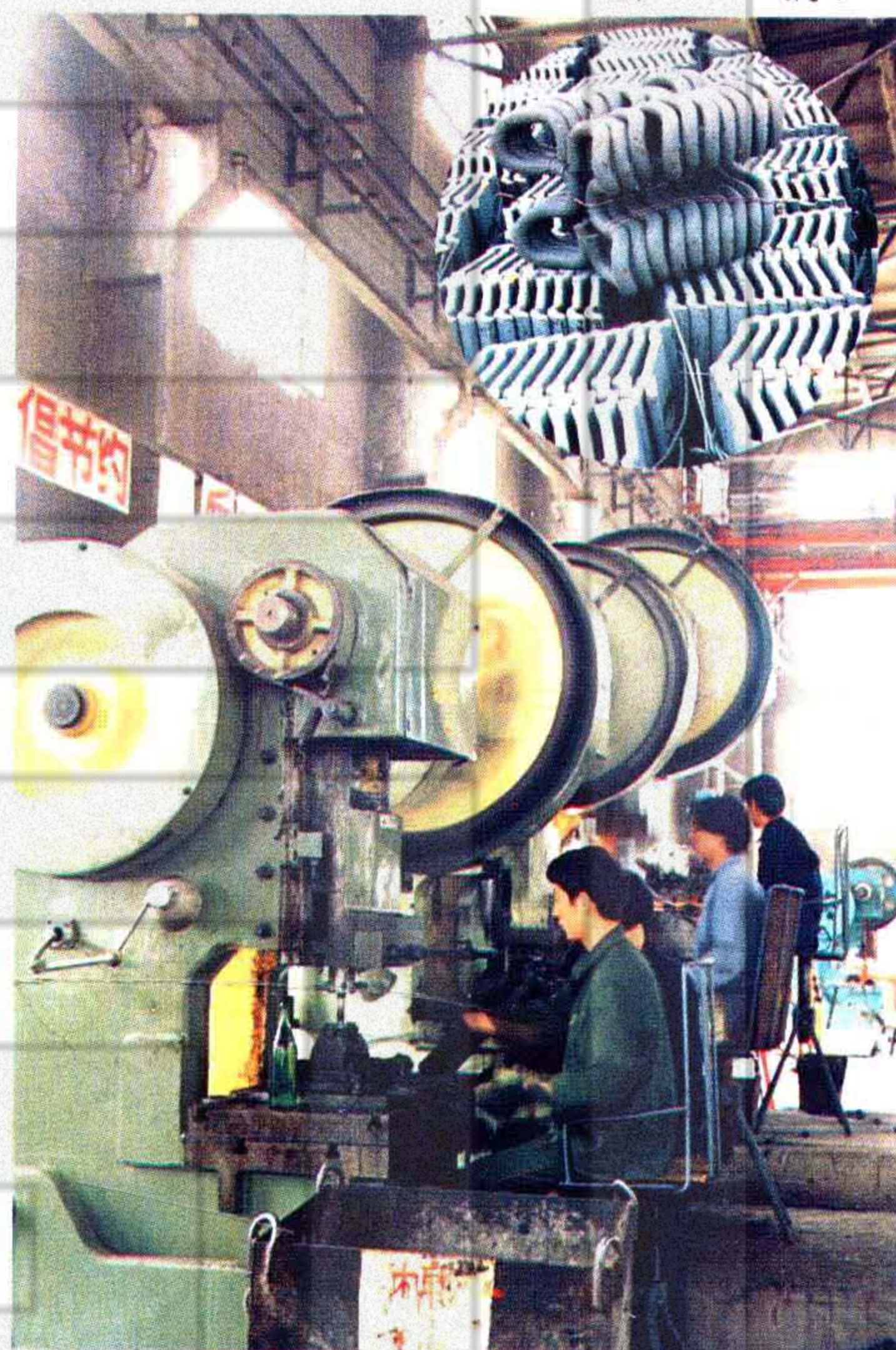
铁路电话:3510

销售副科长:崔吉安

铁路电话:2159

电 挂:2377

邮 编:839001



桥梁厂

Director: Han Hu-Yin

Railway Tel: 2119

Local Tel: 09022-235631

Party Secretary: Liu Song

Railway Tel: 2219

Vice Director: Hao Jian-Bin

Railway Tel: 3510

Vice Marketing Manager: Cui Ji-An

Railway Tel: 2159

TIX: 2377

Postal Code: 839001

Add: North Side of Railway Station, Hami.



大桥实业开发公司是集商贸、餐饮、养殖、种植业为一体的综合性经济实体,有固定资产 100 多万元,职工 66 名。

公司下设:大桥商场,大桥酒家,龙王沟养殖场,火石泉农场等。大桥商场以一流的服务,合理的价格,可靠的信誉,获得广大顾客的信赖;大桥酒家以正宗川味,承办各类中高档宴席,酒家宽敞舒适,内设空调雅座,饭菜可口,高雅温馨,欢迎光临指导。

Da Qiao Industry Development Company of Hami Bridge Factory

The company is comprehensive economic unit which operates in business, travelling, restaurant, breeding and farming with the fixed asset of over RMB 10 million and 66 employee. Its subsidiary: Daqiao Department, Daqiao Restaurant, Long wang-go breeding land, Huoshiquan farm and so on. Daqiao department gains customers' trust with its first-class service, reasonable price and reliable credit; Daqiao restaurant offers middle and ordinary banquets with sichuan dishes. It's clean and wide with air-conditioner.

Manager: Wang Xi-Chun

Railway Tel: 3120

Party Secretary: Wu Wan-Shou

Local Tel: 09022-235317

Manager of Daqiao Department: Xin

Yang

Railway Tel: 3140

Daqiao Restaurant Manager: Xiao Xiu-Zhi

Zhi

Railway Tel: 3130

Postal Code 839001

Add: North Side of Railway Station,

Hami City

经理: 王熙春

铁路电话: 3120

书记: 吴万寿

地方电话: 09022-235317



大桥酒家经理: 肖修志  
铁路电话: 3130

邮编: 839001

地址: 哈密火车站



大桥商场经理: 辛杨  
铁路电话: 3140

## 哈密桥梁厂劳动服务公司 Labour Serve Company of Hami Bridge Factory

公司自 1979 年创建以来,现拥有固定资产 113.5 万元,职工 500 名,房屋建筑面积 6573m<sup>2</sup>。

公司下设:1. 四级建筑队,承揽各种基建项目;2. 综合加工厂,制作钢门、窗、防盗门、冷拔丝;3. 预制厂,承揽各种楼板、构件、钢筋加工;4. 北宇商场;5. 服装厂,加工各类服装、手套;6. 北宇酒家,承包中高档筵席。

服务宗旨:顾客至上,信誉第一,保证质量,信守合同。热忱欢迎各界新老朋友惠顾、合作。



桥梁厂劳动服务公司 总经理: 吕振杨

总经理: 吕振杨

铁路电话: 3240

工业经理: 李西方

铁路电话: 3290

商业经理: 董毅

地方电话: 09022-235637

邮编: 839001

地址: 哈密市北环路

Since its establishment in 1979, the factory covers the construction land of 6573 m<sup>2</sup> with fixed asset of RMB 1,135,000 and 500 employee.

Its subsidiary: 1. Four-grade construction team, contracting for all kinds of construction projects. 2. Comprehensive processing factory producing steel doors, windows, anti-thief doors. 3. prefabricating factory, contracting for all floors, parts and processing steel wire. 4. Beiyu department 5 Garment-making factory, making all garments and gloves. 6. Beiyu Restaurant, offering middle and ordinary class banquets.

Serving Principle: Customer the first, Credit the utmost keeping good quality and contract. Both new and old friends are welcome to visit and cooperate.

General Manager: Lu Zhen-Yang

Railway Tel: 3240

Industry Manager: Li Xi-Fang

Railway Tel: 3290

Commercial Manager: Dong Yi

Local Tel: 09022-235637

Postal Code: 839001

Add: BeiHuan Road, Hami City



北宇商场



# 新疆哈密交通



总公司领导班子

新疆哈密交通开发总公司是哈密交通新技术开发区的领导管理机构，系全民所有制企业，在哈密市登记注册。现设科技开发中心、电算中心、汽车检测中心、集装箱联运公司、边境贸易进出口公司、新宝交通有限公司和公路工程队等 15 个分公司。

总公司以拓展现代化交通运输为突破口，以扩大经济技术贸易为先行，以兴办房地产为重点，以开发高新技术产业为主体，与清华大学、西安交通大学等院校合作，引进资金，研制高新技术产品。总公司主营技、工（农）、贸一体化交通运输业、汽车维修、新技术开发、国内商业、边境贸易、公共饮食业、仓储业、物资供销业，开辟跨国运输，为社会主义建设服务。

总经理、法人代表：吐尔逊·海力力

电话：233029 233694 233042

电挂：7030

邮编：839000

地址：新疆哈密市建国北路 64 号



交通宾馆



车队





# 开发总公司

Xingjiang Hami Transportation Development General Company

The company is the administrative unit of Transportation New Technology Developing Zone in Hami. It's state-owned enterprise and was registered in Hami. It has 15 subsidiaries such as technology developing centre, computer centre, automobile inspection centre, container forwarding company, board trading company, Xingbao transportation Ltd, Highway engineering team and so on.

Cooperating with Qinghua University and Xi'an Transportation University, the company is involved in the development of modern transportation, trading of economy and technology, real estate and high-tech industry. It introduces foreign capital and develops new and advanced products. The company operates in transportation, automobile and truck maintenance, development of new technology, commercial business in the country, board trading,

ing, restaurant, warehouse, material supplying and marketing. It develops across-countries transportation and serves the building of socialism.

General Manager Legal Person:  
Therson. Harlily  
Tel: 233029 233694 233042  
TIX: 7030  
Postal Code: 839000  
Add: No. 64, North Jianguo Road,  
Hami City, Xingjiang



总经理: 吐尔逊·海力力



服装厂



# 新疆哈密交通

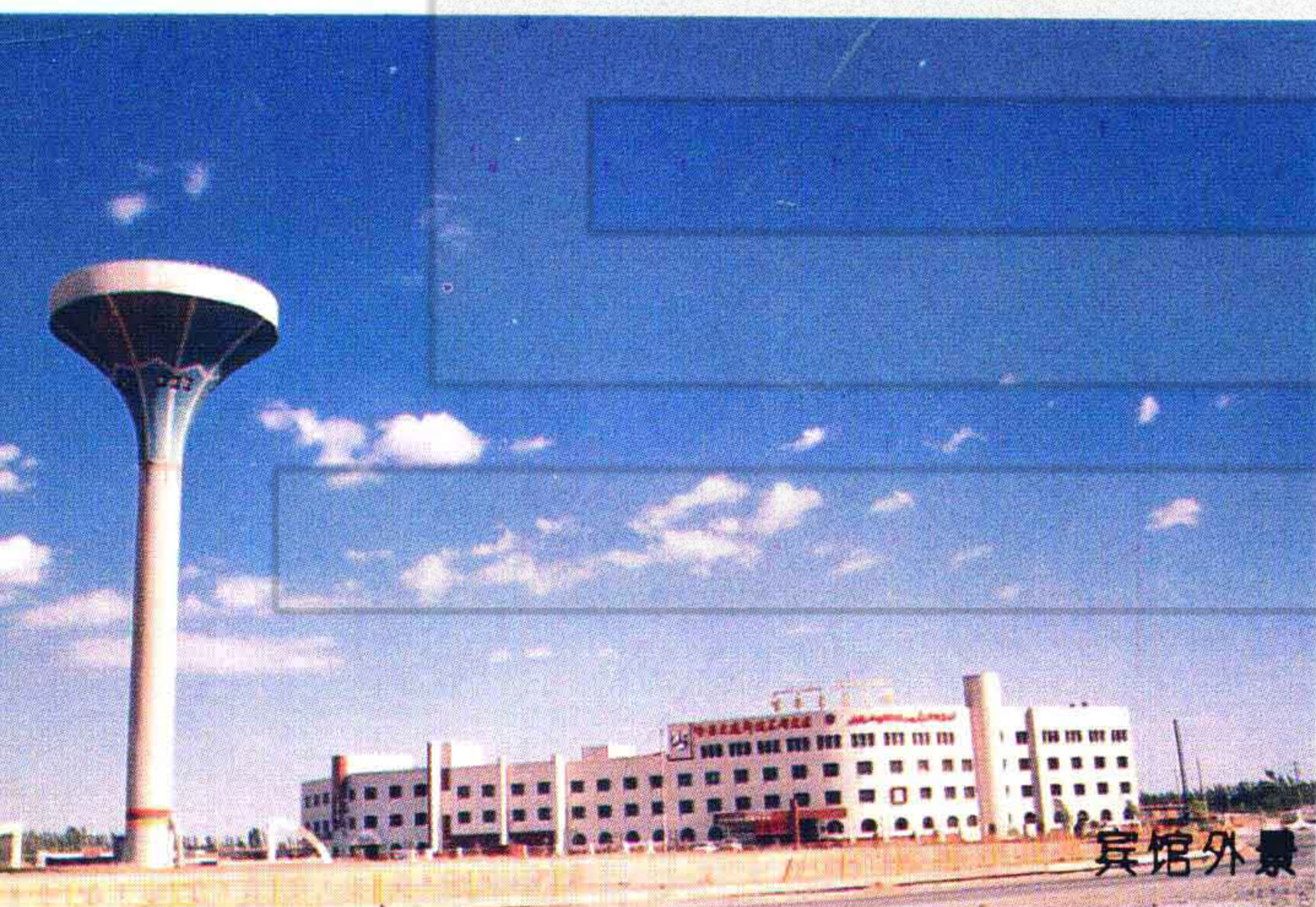
Xingjiang Hami Transportation  
—Jiao Tong



前厅



餐厅



宾馆外景



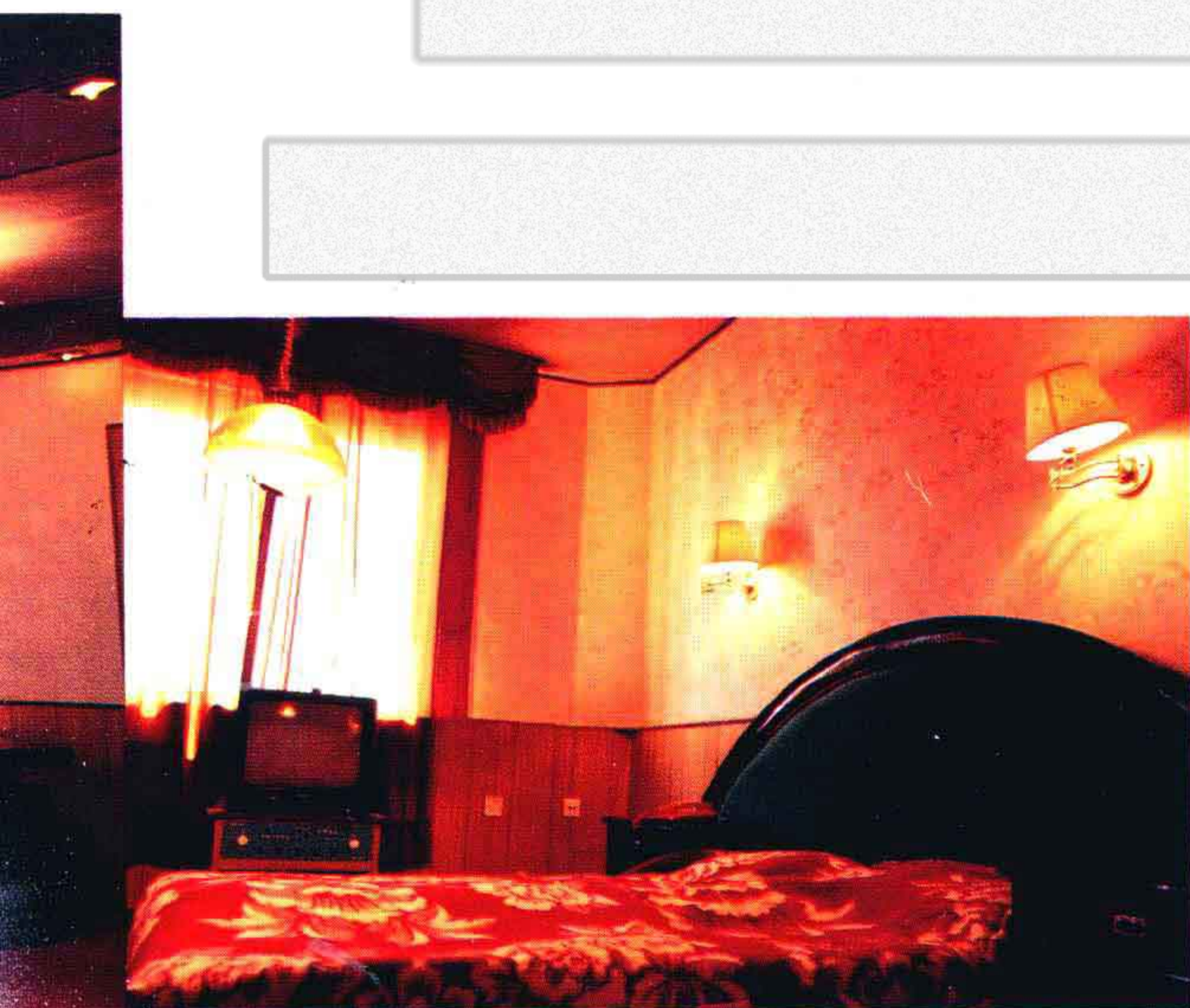
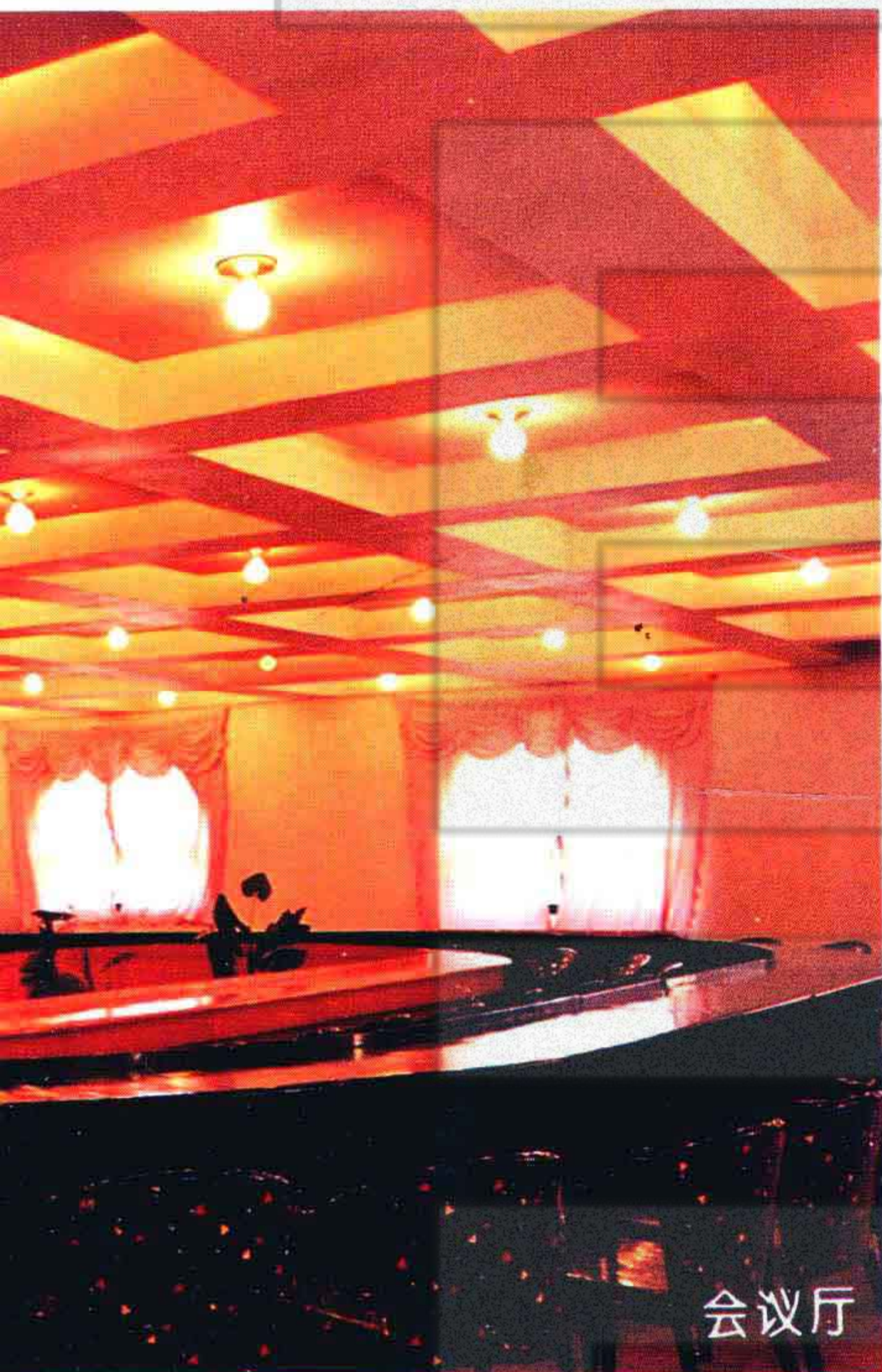
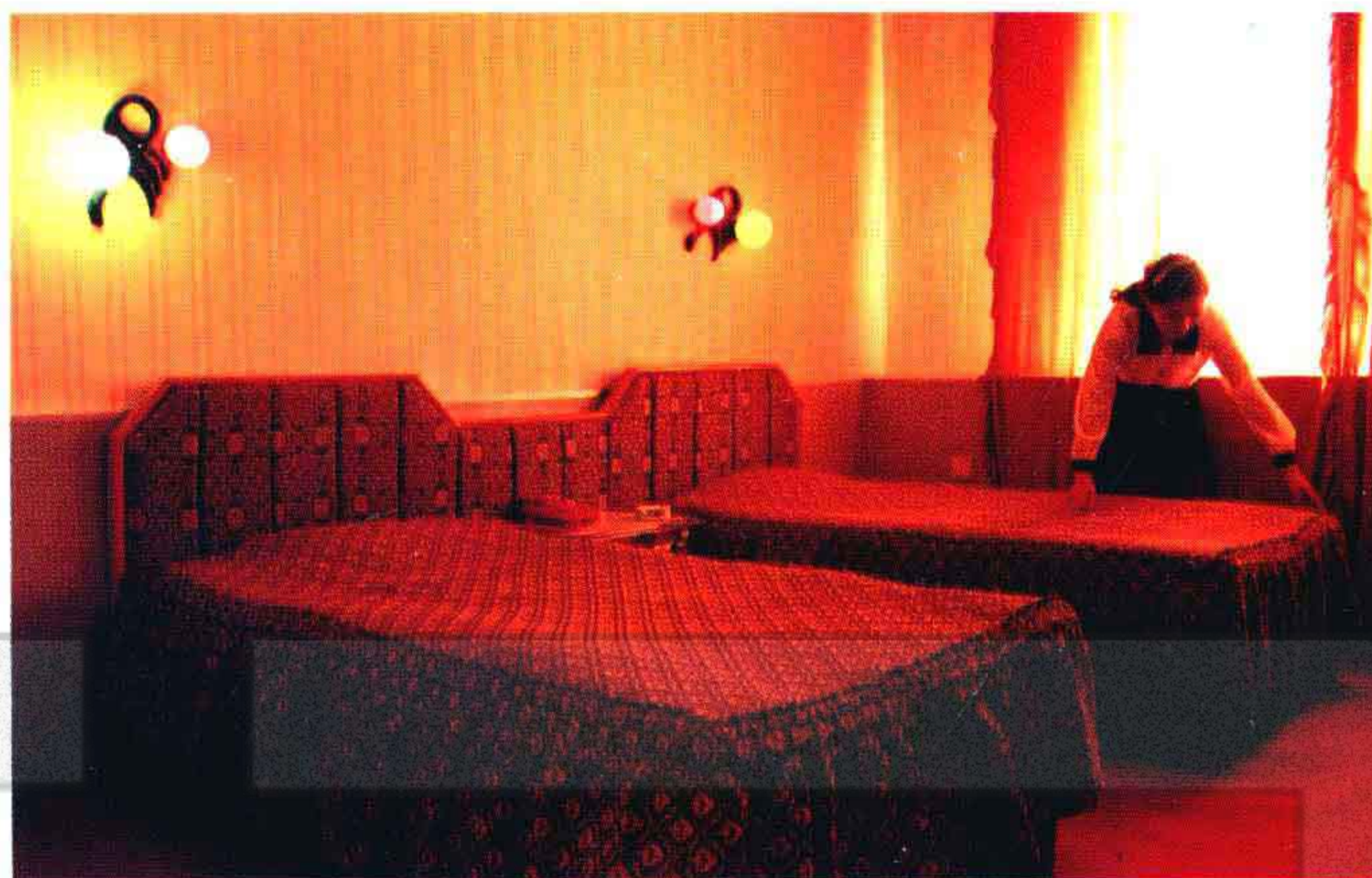


# 开发总公司

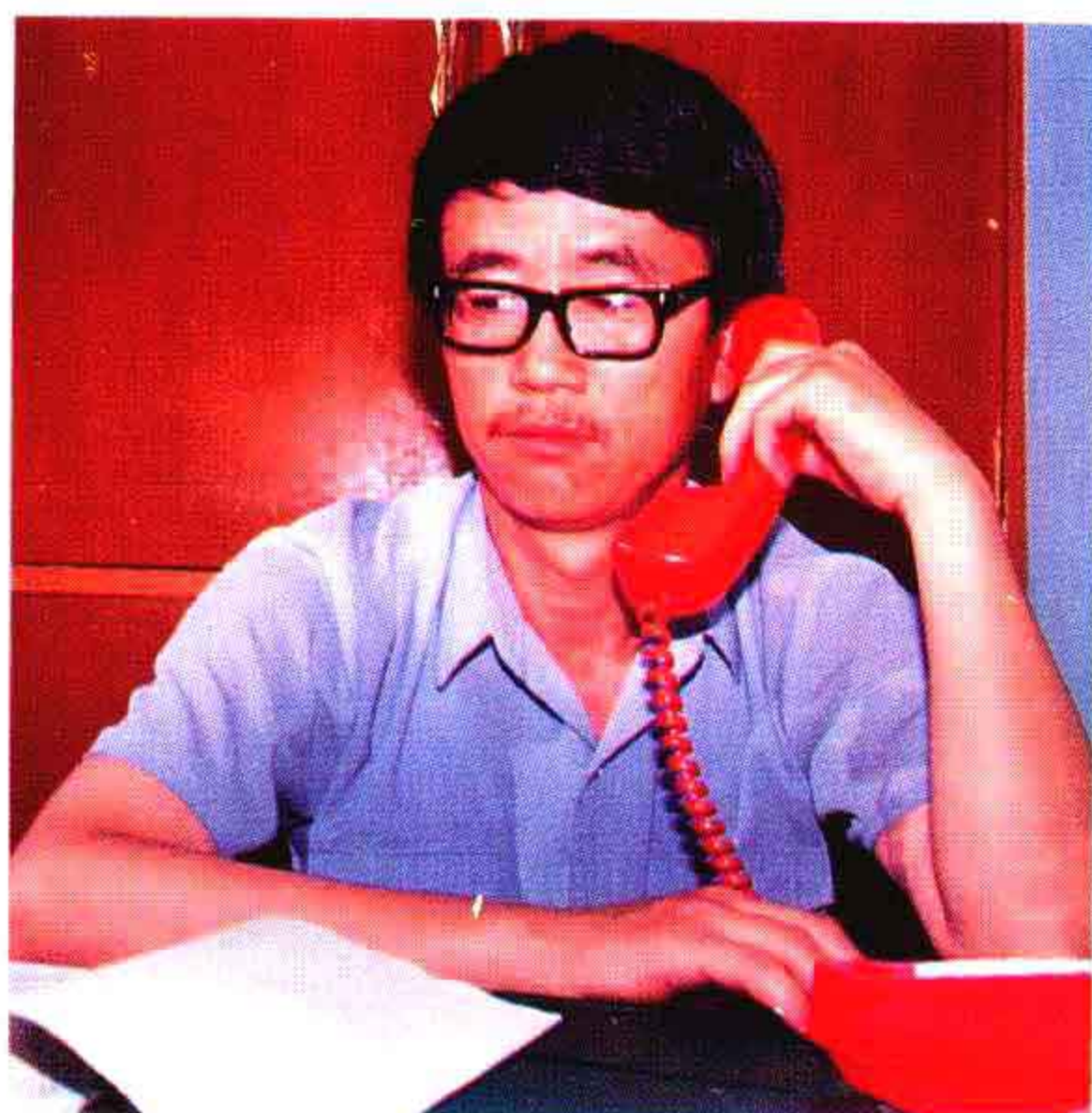
## 通宾馆

Development General Company

Hotel







段长:燕宪国

# 哈密公路总段

Hami General Highway Segment

哈密公路总段现有职工 600 余人,负责养护国道、省道、专用线路共计 8 条,养护里程达 924 公里。

总段下辖 5 个基层段队,拥有雄厚的筑路机械设备和技术力量,年承担筑路工作量 5000 万元以上。

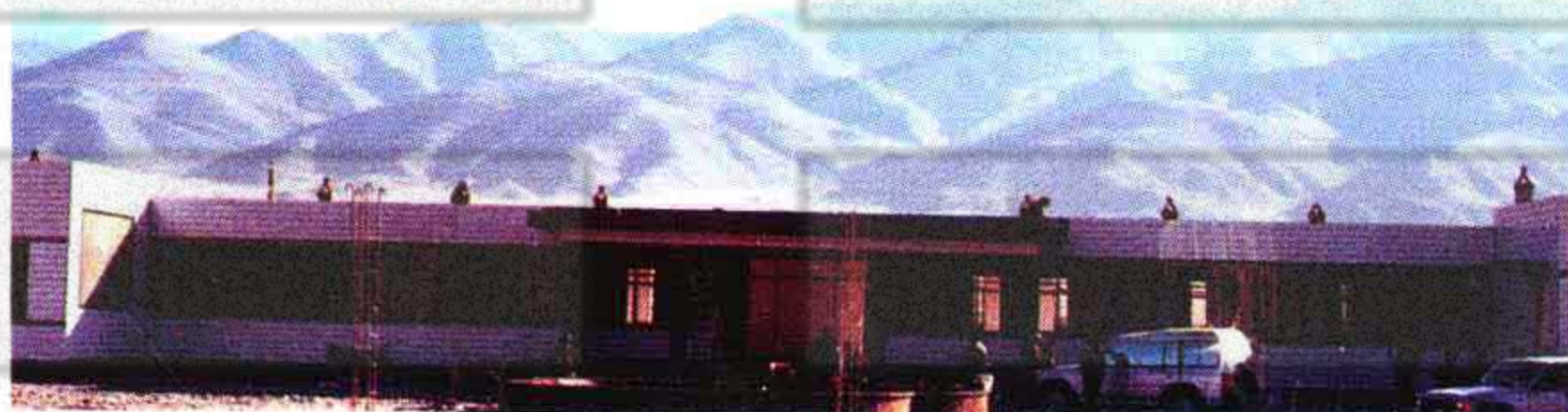
总段以保质量、求效益、创一流为目标,先后承担了国道 312 线瞭墩段、红山口段二级公路改建工程及省道、专用线路三级公路的改建工程,均以速度快、质量好、效益高通过自治区公路局的检查与验收,受到好评。总段的公路养护工作连续 4 年被自治区交通厅公路局评为全疆公路养护先进单位,1994 年好路率达 81%。

总段法人代表:燕宪国

电话:233773

地址:建国北路

邮编:839000



盐池道班



巴里坤幻想湖大厦

It employs about 600 workers to be responsible for the maintenance of 8 national, provincial and special highways which totals 924 km in length.

With 5 teams as its subsidiary and advanced machinery and technology, it builds the lines annually up to RMB 50 million.

Its target is to keep good quality and create first-class. During there-building projects of Liaodum post, Second-class highway at Hongshankou post in 312 national highway and some provincial and special highways third-class, it was highly prarsed because of its quick speed, good quality and high efficiency. It has been awarded as "Xingjiang Highway Maintenance Unit" by Transportation Bureau of the autonomous reigon for 4 years and the percentage of the qualified highways reaches 81 % in 1994.

Leagal Person: Yan Xiao-Guo

Tel: 233773

Add: North Jian Guo Road

Postal Code: 839000



天山路