

“以器官系统为中心” 原版英文教材
SYSTEMS OF THE BODY

内分泌系统 · 第2版

The Endocrine System

SECOND EDITION

BASIC SCIENCE AND CLINICAL CONDITIONS

Joy Hinson
Peter Raven
Shern Chew



北京大学医学出版社

“以器官系统为中心” 原版英文教材
SYSTEMS OF THE BODY

内分泌系统 · 第2版

The Endocrine System **SECOND EDITION**

BASIC SCIENCE AND CLINICAL CONDITIONS

JOY HINSON BSc PhD DSc FHEA
Professor of Endocrine Science
Dean for Postgraduate Studies
Barts and the London School of Medicine and Dentistry
Queen Mary University of London
London, UK

PETER RAVEN BSc PhD MBBS MRCP MRCPsych FHEA
Faculty Tutor (Biomedical Sciences), UCL
Deputy Director of Medical Education, UCL Medical School
and Honorary Consultant Psychiatrist
Camden and Islington Mental Health Trust
London, UK

SHERN CHEW BSc MD FRCP
Professor of Endocrine Medicine/Consultant Physician
Barts and the London School of Medicine and Dentistry
Queen Mary University of London
London, UK

Illustrations by Robert Britton

北京大学医学出版社
Peking University Medical Press

图书在版编目 (CIP) 数据

内分泌系统=The Endocrine System: 第2版: 英文/
(英) 汉森 (Hinsin, J.) 等主编. —影印本.
—北京: 北京大学医学出版社, 2011. 2
“以器官系统为中心” 原版英文教材
ISBN 978-7-5659-0115-7

I. ①内… II. ①汉… III. ①内分泌病—医学院校—
教材—英文 IV. ①R58

中国版本图书馆 CIP 数据核字 (2011) 第 014352 号

The Endocrine System, second edition

Joy Hinsin, Peter Raven, Shern Chew

ISBN: 978-0-7020-3372-8

Copyright © 2010 by Elsevier Limited. All rights reserved.

Authorized reprint edition from English edition published by the Proprietor.

978-981-272-308-6

981-272-308-0

Copyright © 2011 by Elsevier (Singapore) Pte Ltd. All rights reserved.

Elsevier (Singapore) Pte Ltd.

3 Killiney Road, #08-01 Winsland House I, Singapore 239519

Tel: (65) 6349-0200, Fax: (65) 6733-1817

First published 2011

2011 年初版

Published in China by Peking University Medical Press under special arrangement with Elsevier (Singapore) Pte Ltd. This edition is authorized for sale in China only, excluding Hong Kong SAR and Taiwan. Unauthorized export of this edition is a violation of the Copyright Act. Violation of this Law is subject to Civil and Criminal Penalties.

本书英文影印版由 Elsevier (Singapore) Pte Ltd. 授权北京大学医学出版社在中国境内 (不包括香港特别行政区及台湾) 独家发行。本版仅限在中国境内 (不包括香港特别行政区及台湾) 出版及标价销售。未经许可之出口, 是为违反著作权法, 将受法律之制裁。

北京市版权局著作权合同登记号: 图字: 01-2011-1654

内分泌系统 (第2版)

编 写: Joy Hinsin, Peter Raven, Shern Chew

出版发行: 北京大学医学出版社 (电话: 010-82802230)

地 址: (100191) 北京市海淀区学院路 38 号 北京大学医学部院内

网 址: <http://www.pumppress.com.cn>

E - mail: booksale@bjmu.edu.cn

印 刷: 北京画中画印刷有限公司

经 销: 新华书店

责任编辑: 冯智勇 责任校对: 何 力 责任印制: 张京生

开 本: 889mm×1194mm 1/16 印张: 12.25 字数: 395 千字

版 次: 2011 年 4 月第 1 版 2011 年 4 月第 1 次印刷

书 号: ISBN 978-7-5659-0115-7

定 价: 52.00 元

版权所有, 违者必究

(凡属质量问题请与本社发行部联系退换)

Notice

Knowledge and best practice in this field are constantly changing. As new research and experience broaden our knowledge, changes in practice, treatment and drug therapy may become necessary or appropriate. Readers are advised to check the most current information provided (i) on procedures featured or (ii) by the manufacturer of each product to be administered, to verify the recommended dose or formula, the method and duration of administration, and contraindications. It is the responsibility of the practitioner, relying on their own experience and knowledge of the patient, to make diagnoses, to determine dosages and the best treatment for each individual patient, and to take all appropriate safety precautions. To the fullest extent of the law, neither the Publisher nor the Authors assume any liability for any injury and/or damage to persons or property arising out of or related to any use of the material contained in this book.

The Publisher

出版说明

“以器官系统为中心”的医学教学模式是国际医学教育的趋势。本系列书是世界著名医药卫生出版集团爱思唯尔公司出版的一套“以器官系统为中心”的医学基础课程教材，共分为骨骼肌肉系统、心血管系统、呼吸系统、消化系统、泌尿系统、神经系统、内分泌系统七个分册。该套教材第1版出版后受到世界各地许多医学院校的欢迎，并被多家进行“以器官系统为中心”教学的医学院校选定为教材。第2版根据第1版出版后教师和学生的反馈意见，结合医学知识的更新进行了全新修订。在编写内容上，该系列教材强调基础与临床的整合。每一章节都是围绕着一个临床病例展开，通过对病人问题的呈现以及解决过程引出对相关知识的探究，从而使与器官系统结构、功能以及疾病相关的重要的基础医学知识得到了完善的整合。在版式安排上，图框中的病例资料与正文中的医学知识完美匹配，一步一步地激起读者的求知欲望。

当前，我国很多医学院校都在进行“以器官系统为中心”的医学课程教学改革，为了借鉴国外教材的经验，北京大学医学出版社通过版权引进影印出版了这套“SYSTEMS OF THE BODY”原版英文教材。该系列书可以作为医学院校“以器官系统为中心”教学的教材和教学参考书，也可以作为医学院校进行英语授课的教材或供学生自学使用。

北京大学医学出版社

Endocrinology is really very simple. You can either have too much of a hormone ... or too little.

(Professor John Landon's traditional and reassuring introduction to his endocrinology teaching.)

The first edition of this book was aimed primarily at medical students, particularly those taking a modern, integrated course. This second edition is enlarged and expanded to include more detail of physiological and biochemical mechanisms, and has a whole chapter on mechanisms of hormone action. We hope that this edition will be used by students of the biomedical sciences as well as medical students.

The book is intended as a broad general introduction to the Endocrine System, although we hope that you will be sufficiently enthused after reading it to wish to take your studies further in this exciting and fast-moving area.

Each chapter is structured around clinical cases. Endocrinology is at its most interesting when considered in the context of what happens when things go wrong. These cases have been chosen to illustrate important points about either the biochemistry of hormone synthesis or the physiology of endocrine regulation. This will allow

medical students early in their studies to understand the clinical relevance of the basic science. However, we hope that the book will also allow clinical students to understand the basic science underlying endocrine disease.

In the clinical cases featured in this book we have tried to show common presentations of the different disorders, but endocrine problems present in such a wide variety of ways that students should not be misled into thinking that these are the only presentations!

The 'Interesting fact' we included in the first edition have been added to. These are snippets of information that particularly interested us and that we wanted to share with you. We hope that you will find them interesting too.

The first two chapters are not case-based: these contain details of the basic concepts needed to understand hormones and their actions. The final chapter describes a mixture of hormones and other signalling molecules with varying degrees of clinical importance. This chapter illustrates perfectly the idea that endocrinology is rather more than a stand-alone speciality but rather it is a subject which impinges on the cardiovascular system, the immune system and all other systems of the body.

We do hope that we have managed to convey to you our enthusiasm for this most fascinating subject.

1

INTRODUCTION 1

- What is endocrinology? 2
- What do hormones do? 2
- Types of hormone: their synthesis and secretion 4
- The transport and metabolism of hormones 7
- Important concepts in endocrine regulation 8
- Endocrine disorders 10
- Endocrine investigations: general principles 12

2

RECEPTORS AND HORMONE ACTION 15

- Introduction 16
- General characteristics of receptors 16
- Types of hormone receptors 17
- Cell-membrane receptors 17
- Hormonal regulation of transcription 23
- Intracellular receptors 24
- Disorders of receptor function 26

3

THE HYPOTHALAMUS AND PITUITARY PART I: THE HYPOTHALAMUS AND POSTERIOR PITUITARY 27

- Introduction 28
- Where can I find the hypothalamus and pituitary? 28
- Connection between the hypothalamus and pituitary 31
- Development of the hypothalamus and pituitary 31
- The hormones of the hypothalamus 31
- The hormones of the posterior pituitary 32
- Release of posterior pituitary hormones is part of a neuroendocrine reflex: oxytocin secretion and actions 32
- Regulation of vasopressin secretion 33
- Actions of arginine vasopressin 34
- Disorders of vasopressin secretion and action 35
- Thirst 36
- Other hypothalamic hormones 37

4

THE HYPOTHALAMUS AND PITUITARY PART II: THE ANTERIOR PITUITARY 39

- Introduction 40
- Structure of the anterior pituitary 40
- The hormones of the anterior pituitary 41
- Regulation of hormone secretion in the anterior pituitary 43
- Growth hormone and prolactin in blood 46
- Actions of the anterior pituitary hormones growth: hormone and prolactin 46

- Disorders of anterior pituitary function: over-secretion 48
- Disorders of under-secretion of anterior pituitary hormones 49
- Tests for hypopituitarism 50
- Insufficient growth hormone secretion 50

5

THE ADRENAL GLANDS PART I: THE ADRENAL MEDULLA 53

- Introduction 54
- Where to find the adrenal glands 54
- Blood supply 54
- Nerve supply 55
- Embryology of the adrenal gland 55
- The adrenal medulla 55
- Disorders of the adrenal medulla: phaeochromocytoma 59
- Familial phaeochromocytoma 59
- Pharmacological uses of hormones of the adrenal medulla 60

6

THE ADRENAL GLANDS PART II: THE ADRENAL CORTEX 61

- Introduction 62
- Structure of the adrenal cortex 62
- Hormones produced by the adrenal cortex 62
- Regulation of steroid production 66
- Transport of steroid hormones in blood 68
- Disorders of adrenal steroids 71
- Pharmacological use of glucocorticoids 73

7

THE THYROID GLAND 75

- Introduction 76
- Thyroid anatomy 77
- What is a goitre? 77
- Blood supply 77
- Structure of the thyroid 78
- Synthesis of thyroid hormones 78
- Iodine 79
- Thyroxine and T3: the thyroid hormones in blood 79
- Control of thyroid function 81
- Cellular action of thyroid hormones 82
- Effects of thyroid hormones 82
- Disorders of thyroid hormone secretion 83
- Causes of thyroid hyposecretion 85
- Effects of thyroid hormone insufficiency: myxoedema 85



HORMONAL CONTROL OF REPRODUCTION PART I: MALE REPRODUCTIVE SYSTEM 87

- Introduction 88
- Where are the testes? 88
- What are the testes? 89
- Testicular blood and nerve supply 90
- Spermatogenesis 91
- Androgen production 91
- Hormonal control of testicular function 91
- Transport of testosterone in blood 93
- Actions of testosterone 93
- Hormone-dependent cancer in men 95
- Disorders of male reproduction 96
- Therapeutic uses of androgens 97
- Abuse of anabolic androgenic steroids 97
- Declining sperm counts 98



HORMONAL CONTROL OF REPRODUCTION PART II: FEMALE REPRODUCTIVE SYSTEM 99

- Introduction 100
- Structure of the ovary 100
- Ovarian hormones 100
- Transport and metabolism of oestrogen and progesterone 102
- Oestrogens 102
- Androgen secretion by the ovaries 104
- Hormonal regulation of ovarian function 105
- Hormone-dependent cancer in women 105
- The menstrual cycle 105
- Disorders of the menstrual cycle 108
- The endocrinology of pregnancy 110



HORMONAL CONTROL OF REPRODUCTION PART III: DEVELOPMENT AND FERTILITY 115

- Introduction 116
- Gender determination and differentiation 116
- Hormonal control of sexual differentiation 116
- Abnormalities of sexual differentiation 117
- Hormones during development: puberty and menarche 118
- Disorders of puberty 119
- Menopause and the climacteric 121
- Premature ovarian failure 122
- Symptoms of the menopause 122
- Hormone replacement therapy 123
- Alternative therapies 125
- Hormonal control of fertility: contraception 125
- Hormonal control of fertility: assisted conception 126



INSULIN AND THE REGULATION OF PLASMA GLUCOSE 129

- Introduction 130
- Glucose in urine 130
- Insulin and the response to high blood glucose levels 131
- Disorders of blood glucose regulation: diabetes mellitus 135
- Gestational diabetes 143
- The metabolic syndrome—a growing problem? 143



HORMONAL REGULATION OF PLASMA CALCIUM AND CALCIUM METABOLISM 147

- Introduction 148
- Serum calcium 148
- The structure, functions and endocrinology of bone 149
- Hormones involved in the regulation of serum calcium 151
- Parathyroid hormone 151
- Calcitriol: source and activation of vitamin D 153
- Effects of other hormones on plasma calcium 156
- Disorders of hypercalcaemia 156
- Disorders of hypocalcaemia 157
- Diseases of bone 158
- A brief mention of calcitonin 159
- Regulation of serum phosphate 159



MISCELLANEOUS HORMONES 161

- Erythropoietin 162
- Immune–endocrine interactions: cytokines and eicosanoids 163
- Age-related changes in hormone secretion 164
- Melatonin 164
- Gut hormones 166
- The hormonal control of appetite: fat is an endocrine tissue 167
- Multiple organ disorders in endocrinology 168
- Regulation of blood pressure and volume 169
- The next 100 years of endocrinology 169

Glossary 171

Index 173

INTRODUCTION

Chapter objectives

After studying this chapter you should be able to:

1. Explain what is meant by a hormone and name the major endocrine organs.
2. Categorize common hormones by their basic chemical structures.
3. Understand the role of plasma binding proteins for some hormones.
4. Understand the different forms of endocrine regulation, including set point, diurnal variation, endocrine axis and negative feedback.
5. Understand the basis of endocrine disease.
6. Appreciate the purpose and types of endocrine testing.

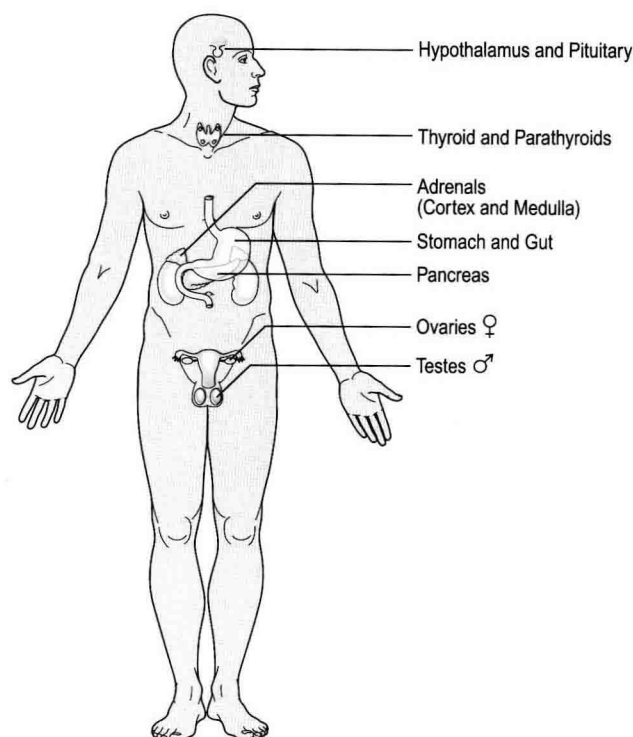


Figure 1.1 Major endocrine glands of the body. In addition, the gut, heart and skin have all been shown to produce hormones.

What is endocrinology?

Endocrinology is the study of hormones and their actions. Hormones are chemical messengers, released into the blood, that act through receptors to cause a change in the target cell. The glands that release hormones are ductless, giving the term 'endocrine' from the Greek for 'internal secretion'. The thyroid gland is an example of a classical endocrine gland. Its only function is to synthesize and release hormones into the bloodstream. Some organs, such as the pancreas, have endocrine as well as other functions. So the hormones released by the pancreas are released directly into the blood, whereas the other (exocrine) secretions of the pancreas are released into a duct.

The major, or 'classical', endocrine glands are shown in Figure 1.1 and the hormones they secrete are listed in Table 1.1. It has been suggested that the vascular endothelium, the whole gastrointestinal tract, and even the skin, should also be considered to be endocrine organs as they all release hormones or their precursors into the blood. Such tissues form the extensive 'diffuse endocrine system', which is located throughout the body. This system consists of scattered endocrine cells, located in various different tissues, that secrete hormones but do not form a discrete endocrine gland.

Endocrinology is a relatively young branch of medical science and is, by definition, exciting. The term

'hormone' was coined by Starling in the early 1900s. It derives from the Greek *hormon*, meaning 'exciting' or 'setting in motion'. Ernest Starling (1866–1927) is perhaps best known for his eponymous law of the cardiovascular system, but is also regarded as the founder of endocrinology. Working at University College, London, with Sir William Bayliss, he isolated and described the actions of secretin, the first known hormone. Starling built on the theoretical work of Edward Schafer and developed the concept of 'an endocrine system' in 1905, in a series of lectures called 'On the chemical correlations of the functions of the body'.

Endocrine disorders are very common in Western society and it has been estimated that more than half the population will suffer from an endocrine disease during their lifetime. There are several examples of common endocrine diseases: osteoporosis, the bone-weakening disease, affects one-third of older women. Around one in six women has polycystic ovarian disease. In addition, an increasing number of the population has type 2 diabetes, a disease of insulin resistance, as a result of obesity.

Interesting fact

The year 2005 saw the centenary of 'Endocrinology' as a recognized science and branch of medicine. Learned societies, such as the Society for Endocrinology, celebrated this with a series of special published articles, papers, lectures, events and poster campaigns (Fig. 1.2). To put this into perspective, surgery and pharmacology have been around for thousands of years.



**Society for
Endocrinology**

Figure 1.2 In 2005, The Society for Endocrinology celebrated the centenary of Endocrinology as a recognized science.

What do hormones do?

There are two major regulatory systems in the body: the neural system and the endocrine system. Although both use chemical messengers, they are set up very differently and have quite different functions. Neural regulation is very rapid, while endocrine control is generally slower and acts over a longer period of time. These differences arise because the neural system is designed to deliver its messenger directly to the surface of its target cell, while the endocrine system puts its messengers into the blood and allows for diffusion from the

Table 1.1 Major endocrine glands and the hormones they secrete

<i>Gland</i>	<i>Hormone</i>	<i>Type of hormone</i>
Hypothalamus	Corticotropin releasing hormone (CRH)	Peptide
	Dopamine (DA)	Modified amino acid
	Gonadotropin-releasing hormone (GnRH)	Peptide
	Growth hormone releasing hormone (GHRH)	Peptide
	Somatostatin	Peptide
	Thyrotropin-releasing hormone (TRH)	Peptide
	Vasopressin (AVP; anti-diuretic hormone, ADH)	Peptide
Anterior pituitary	Adrenocorticotrophic (ACTH)	Peptide
	Follicle stimulating hormone (FSH)	Peptide
	Growth hormone (GH)	Peptide
	Luteinizing hormone (LH)	Peptide
	Prolactin (Prl)	Peptide
	Thyroid stimulating hormone (TSH; thyrotropin)	Peptide
Posterior pituitary	Oxytocin	Peptide
	Vasopressin (AVP; anti-diuretic hormone, ADH)	Peptide
Thyroid	Thyroxine (T4)	Modified amino acid
	Tri-iodothyronine (T3)	Modified amino acid
	Calcitonin	Peptide
Parathyroid	Parathyroid hormone (PTH)	Peptide
Adrenal cortex	Aldosterone	Steroid
	Cortisol	Steroid
	Dehydroepiandrosterone (DHEA)	Steroid
Adrenal medulla	Adrenaline (epinephrine)	Modified amino acid
	Noradrenaline (norepinephrine)	Modified amino acid
Pancreas	Insulin	Peptide
	Glucagon	Peptide
Stomach and gut	Gastrin	Peptide
	Glucagon	Peptide
	Vasoactive intestinal polypeptide (VIP)	Peptide
	And many other peptides, see Ch. 13	
Ovaries	17 beta oestradiol	Steroid
	Progesterone	Steroid
Testes	Testosterone	Steroid
Kidneys	Erythropoietin (EPO)	Peptide
	Calcitriol	Modified steroid

blood to the target cell. Thus, the endocrine system is not designed for the same speed of communication as the neural system, but instead has the ability to deliver its messengers to a wider range of targets throughout the body.

Hormones usually control regulatory systems in the body, including homeostasis, metabolism and

reproduction. Homeostasis means 'keeping the same' and is a term used to describe the regulation of any of the large physiological systems in the body, including levels of glucose in blood and body temperature. Hormones are particularly important in making sure that blood levels of sodium, potassium, calcium and glucose stay within set limits.

The boundaries between the endocrine system and the neural system are quite fuzzy (Fig. 1.3), because some hormones are released from nerve endings, 'neurohormones', while other hormones, such as adrenaline, are perhaps better known as neurotransmitters.

Types of hormone: their synthesis and secretion

In terms of their chemical structure, hormones are a varied group of substances. There are, however, three major basic types. The first and most numerous are the peptide hormones, made of chains of amino acids. Some of these are very small indeed: the hypothalamic hormone thyrotropin releasing hormone (TRH) is only three amino acids long, whereas the pituitary hormone whose release it stimulates (thyroid stimulating hormone, TSH) is a large glycoprotein with a molecular weight of around 30000 Daltons. Usually, peptide hormones are pre-formed and stored in granules within the endocrine cell, ready for release in response to the appropriate signal. The synthesis and secretion of peptide hormones is shown in Figure 1.4A.

Many peptide hormones, particularly the larger ones, undergo modification of the basic peptide sequence before being secreted. This post-translational processing, which occurs in the Golgi apparatus and the secretory granules, can include the linking of peptide chains by disulphide bridges, and the addition of carbohydrate residues (glycosylation). Peptide hormone-secreting cells are distinguished by the large amounts of rough endoplasmic reticulum, prominent Golgi apparatus and by the presence of secretory granules, containing the finished hormone ready for secretion.

The second major group of hormones consists of the steroids. These are all made from cholesterol (Fig. 1.4B) and have a common core structure (Fig. 1.5). Quite small chemical changes to this core structure cause significant differences in their biological effects (Fig. 1.6). The steroids are formed by metabolism of cholesterol by enzymes within the steroid-secreting cell, located either within the mitochondria or the smooth endoplasmic reticulum. Cells which are involved in steroid hormone production are distinctive under microscopy because of the presence of unusually large amounts of smooth endoplasmic reticulum and mitochondria. They also usually contain significant lipid droplets, containing cholesterol esters, as steroid-secreting cells store the precursor to hormone synthesis rather than the finished product. The pathways of steroid hormone biosynthesis are shown in the adrenal chapter and the chapters on reproduction.

The third group of hormones are those derived from amino acids. For example, tyrosine residues can be iodinated to give thyroid hormones, or hydroxylated as the first step on the biosynthetic pathway of the

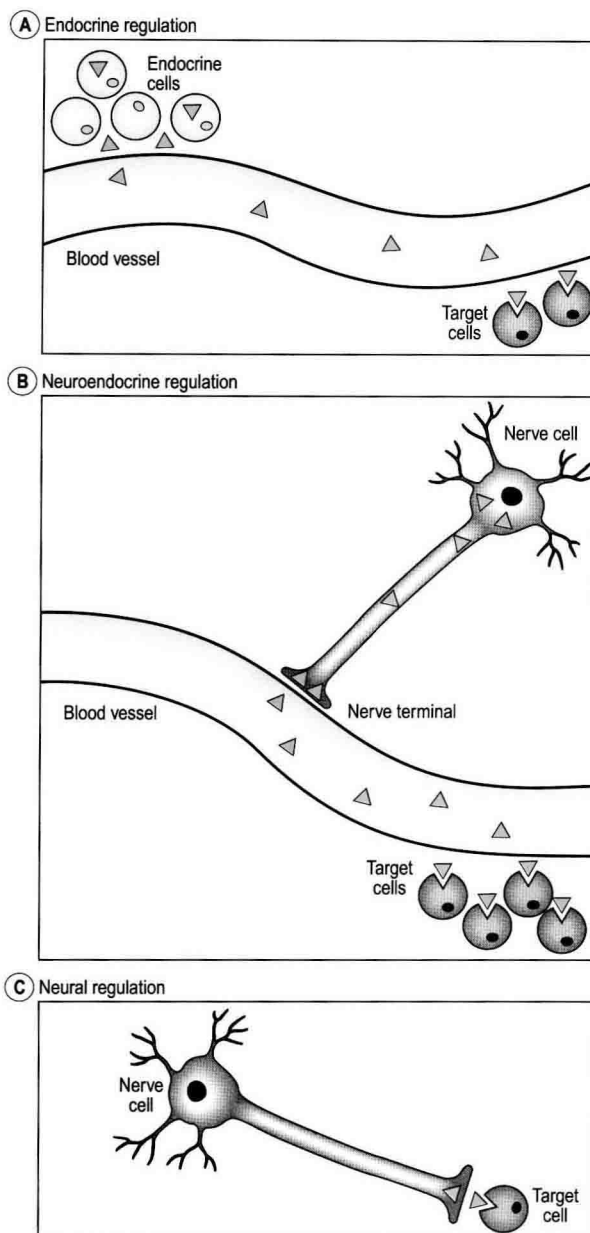


Figure 1.3 Comparison of (A) endocrine, (B) neuroendocrine and (C) neural regulation. In endocrine regulation, the hormone is released from the cells of an endocrine or 'ductless' gland into the bloodstream where the hormones travel to target cells often at some distance from the endocrine gland. In neural regulation, the neurotransmitter is released, in response to an action potential, from a nerve ending into the synaptic cleft, directly onto the surface of the target cell. In neuroendocrine regulation, the hormone is secreted by a nerve cell in response to an action potential, but is released into the bloodstream, not a synaptic cleft, and then acts as a hormone.

catecholamines: dopamine, adrenaline and noradrenaline (Fig. 1.7). A detailed account of the synthesis of thyroid hormones is given in Chapter 7 and for the catecholamines, in Chapter 5.

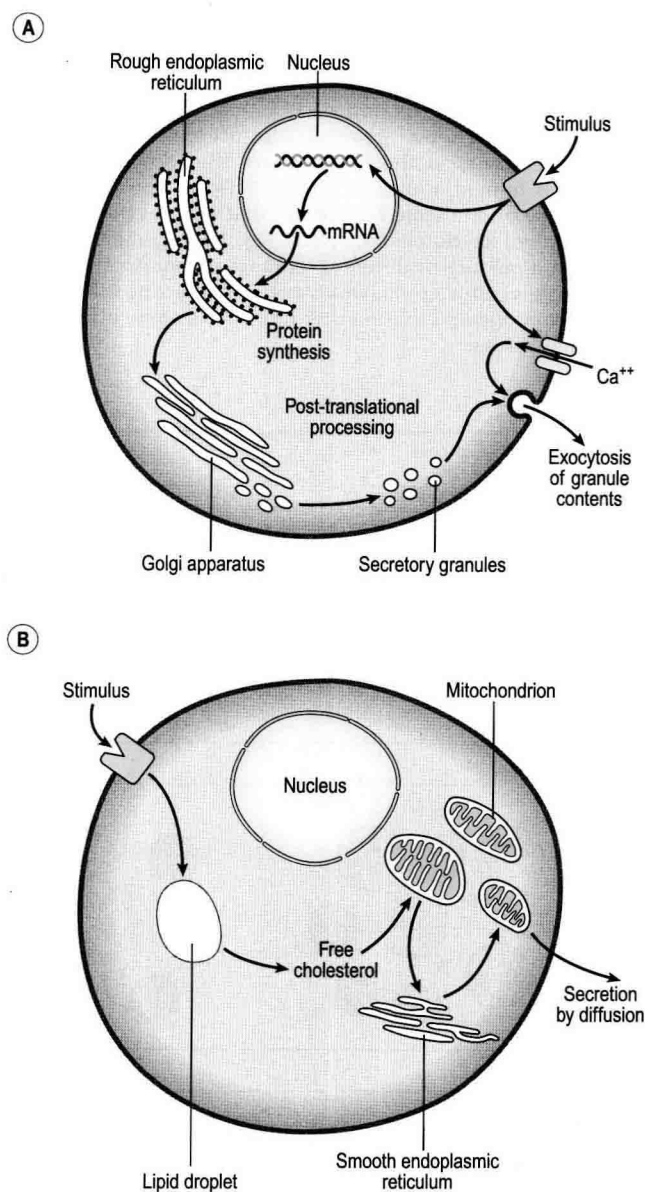


Figure 1.4 Synthesis and secretion of (A) peptide hormones and (B) steroid hormones. The cells that synthesize peptide hormones have abundant rough endoplasmic reticulum and Golgi apparatus. Secretory granules are often visible. Peptides require a specific secretory mechanism, exocytosis, which is usually triggered by an increase in intracellular calcium levels, or depolarization of the cell. The entire contents of the secretory granule are released. Steroid-secreting cells, on the other hand, have lipid droplets visible in the cytoplasm. They have abundant mitochondria and smooth endoplasmic reticulum. The steroid hormones, once made, simply diffuse out of the cell and do not require a specific secretory mechanism.

The differences in chemical structure of hormones have implications for the way in which these hormones are stored, released, transported in blood, their mechanism of action and, of course, their route of administration when they are used therapeutically (Table 1.2). Peptide

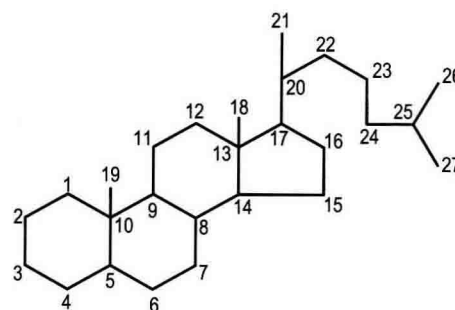


Figure 1.5 Structure of cholesterol, the parent compound for all steroid hormones and vitamin D. The classical steroid system for numbering carbon atoms is shown.

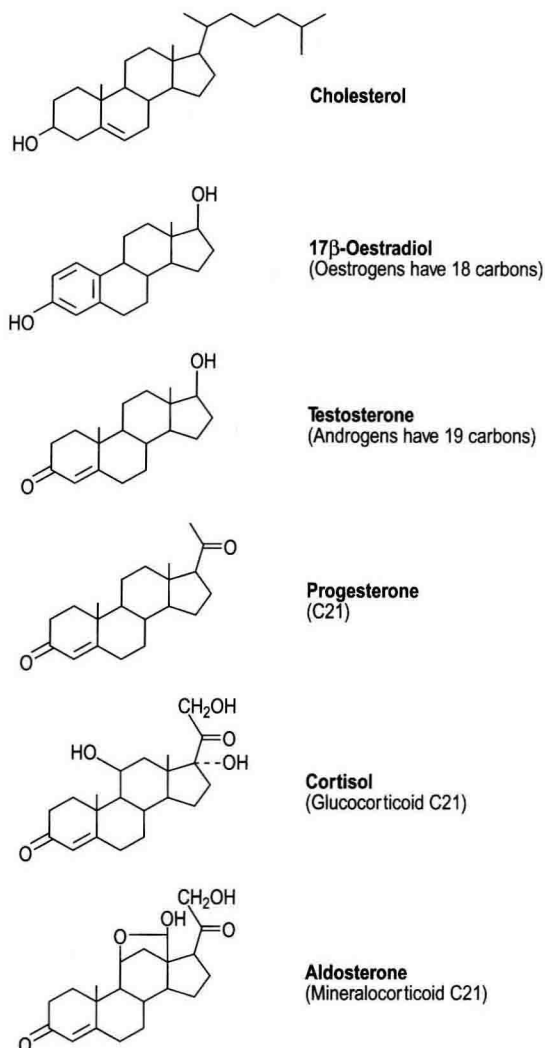


Figure 1.6 The major families of steroid hormones.

hormones and catecholamines, being generally quite water-soluble, dissolve readily in plasma, the fluid component of the blood, but cannot enter the target cell, so interact with receptors on the cell surface. The lipophilic

steroid and thyroid hormones, on the other hand, dissolve poorly in plasma and are mostly transported in blood bound to carrier proteins, but readily enter cells to interact with cytoplasmic or nuclear receptors. While peptide hormones and catecholamines are synthesized then stored in granules in the cells to be released as soon as they are needed (see Fig. 1.4A), steroid-secreting cells keep a store of cholesterol, the substrate for steroid biosynthesis, rather than the final steroid product (see Fig. 1.4B). This is largely a matter of practicality as the steroid hormones, being lipid soluble, are difficult to store, whereas cholesterol can be esterified and stored easily. Similarly, in the thyroid gland, a store of precursor is maintained, from which thyroid hormones may be readily released.

As a consequence of their small and lipophilic nature, steroid hormones do not require a specific secretory mechanism: they simply diffuse across the plasma membrane and out of the cell down a concentration gradient. Peptide hormones, on the other hand, need a specific secretory mechanism (see Fig. 1.4).

Finally, when they are used therapeutically, steroid hormones and thyroid hormones are orally active, whereas most peptide hormones (such as insulin) must be injected, to avoid being inactivated by digestive enzymes.

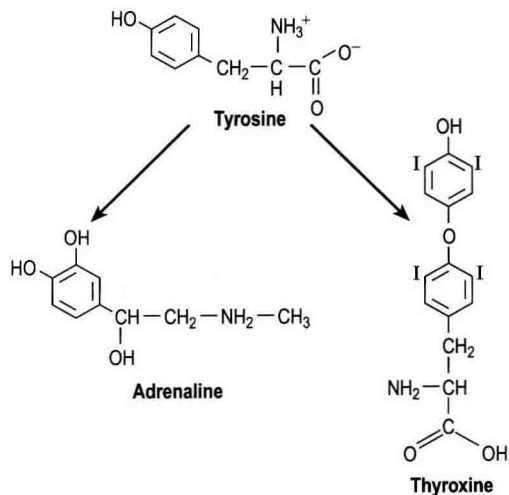


Figure 1.7 Metabolism of the amino acid tyrosine produces both thyroid hormones (thyroxine) and catecholamines (adrenaline).

Interesting fact

Classically, hormones travel from the cells where they are made, in the bloodstream, to reach the cells where they act. But some hormones also act locally, on different cell types in the tissue where they are produced. This is termed a 'paracrine' effect. Other hormones act directly on the same type of cell that secretes them. This is termed an 'autocrine' action (Fig. 1.8). Hormones may have a mixture of different types of action. An example of this is testosterone, which exerts a paracrine effect on spermatogenesis in the testis, but an endocrine effect on other tissues.

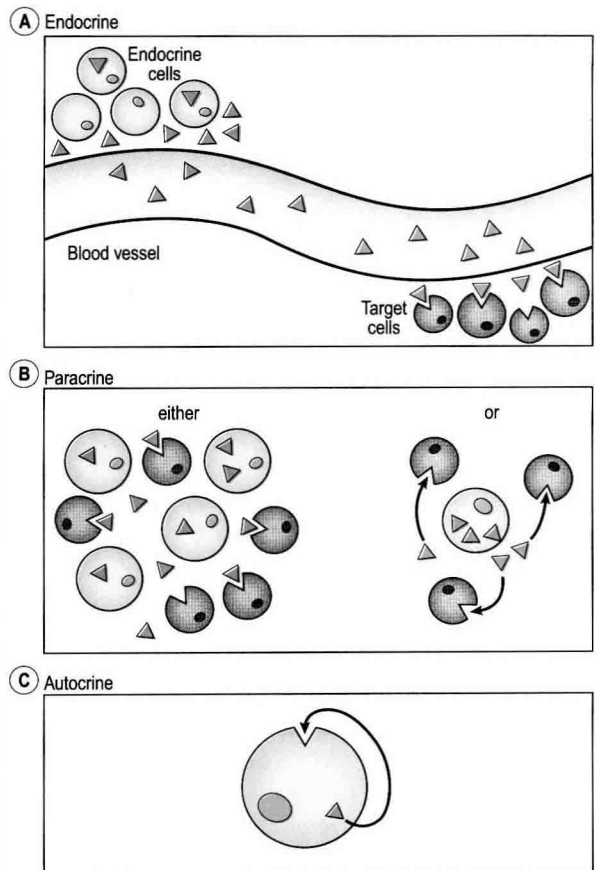


Figure 1.8 (A) Endocrine, (B) paracrine and (C) autocrine regulation.

Table 1.2 Comparison of steroids, peptides, thyroid hormones and catecholamines

	<i>Location of receptors</i>	<i>Carrier protein</i>	<i>Active if administered orally?</i>	<i>Storage</i>
Peptides	Cell membrane	No	Not usually	Hormone stored
Steroids	Cytoplasm/nucleus	Yes	Yes, mostly	Precursor stored
Thyroid hormone	Nucleus	Yes	Yes	Precursor stored
Catecholamines	Cell membrane	No	No	Hormone stored

The transport and metabolism of hormones

Hormones circulate in blood in very low concentrations indeed, and for this reason they are measured in units that are unfamiliar to many people (Table 1.3). Although some hormones, mostly the peptide hormones, are freely water-soluble, the steroid and thyroid hormones are not so soluble, and need to be transported in blood bound to a carrier or binding protein (Table 1.4). Not all steroids have a specific binding protein: aldosterone, for example, does not have a specific carrier protein, and circulates in blood mostly bound loosely to albumin. The binding proteins have three main functions. First, they increase the solubility of the hormone in blood. Second, they create a readily accessible reserve of the hormone in blood. Only the fraction of hormone that is not bound to the carrier protein is considered to be biologically active. When we describe a hormone as 'biologically active' we mean that it is available to exert its physiological effects but is also susceptible to metabolism or excretion. The biologically active hormone is 'seen' by the body but the bound hormone is effectively hidden. This is one factor that must be considered when measuring circulating concentrations of hormones: some assays measure total hormone (bound and free) while others measure only the biologically active hormone. You really need to know what it is that you are measuring. It is particularly important because levels of binding proteins can be altered in some clinical conditions and by some drugs.

The third function is to increase the biological half-life of the hormone. The biological half-life of a hormone is the time taken for half the hormone present in blood to be metabolized or excreted. It can be measured by injecting somebody with a 'tagged' hormone that can be easily distinguished from the normal hormone, then

seeing how quickly it disappears from the circulation by measuring the amount present in samples taken at different times after the injection (Fig. 1.9). Binding proteins increase the biological half-life of a hormone by protecting it from metabolism and excretion, so that aldosterone, which does not have a specific carrier protein, has a half-life of around 15 min, whereas cortisol, which is bound to cortisol binding globulin (CBG), has a half-life of 90 min.

Different types of hormones are metabolized and excreted in different ways: Peptide hormones are mainly metabolized following binding to a receptor in the target cell. The hormone-receptor complex is internalized (that is taken up into the cell), and the hormone undergoes degradation in a lysosome. Most peptide hormones have a short half-life of just a few minutes, although the larger glycosylated peptide hormones such as thyroid stimulating hormone and luteinizing hormone have a longer half-life.

Steroid hormones are small and lipophilic and may be excreted by the kidney in an unchanged form. Mostly,

Table 1.4 Hormones and their binding proteins

<i>Hormone</i>	<i>Binding protein</i>
Thyroid hormone	Thyroid hormone binding globulin (THBG)
Testosterone/oestradiol	Sex hormone binding globulin (SHBG)
Cortisol	Cortisol binding globulin (CBG, also called transcortin)
Vitamin D	Vitamin D binding protein (DBP)

Table 1.3 Concentrations of various substances in blood

<i>Substance</i>	<i>Concentration in SI units (using conventional abbreviations)</i>	<i>Log mol/L and equivalent SI unit (per litre) in full</i>	
Sodium	140 mmol/L	10^{-1}	100 millimoles
Bicarbonate	21–26 mmol/L	10^{-2}	10 millimoles
Glucose	3–5 mmol/L	10^{-3}	1 millimole
Uric acid	150–500 μ mol/L	10^{-4}	100 micromoles
Iron	10–30 μ mol/L	10^{-5}	10 micromoles
Vitamin A	0.5–2 μ mol/L	10^{-6}	1 micromole
Cortisol (0900 h)	200–650 nmol/L	10^{-7}	100 nanomoles
Testosterone (men)	10–35 nmol/L	10^{-8}	10 nanomoles
Tri-iodothyronine	1–3.5 nmol/L	10^{-9}	1 nanomole
Adrenaline (resting)	170–500 pmol/L	10^{-10}	100 picomoles
Free thyroxine	10–30 pmol/L	10^{-11}	10 picomoles
Oxytocin (basal)	1–4 pmol/L	10^{-12}	1 picomole

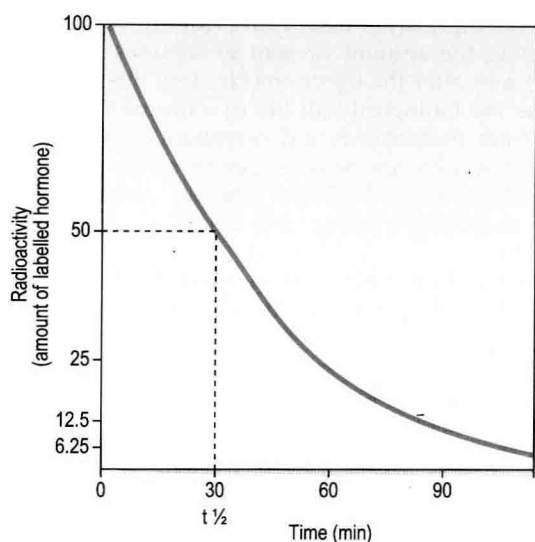


Figure 1.9 Measurement of the half-life of a hormone in blood. A labelled (radioactive) hormone is injected into the blood at time 0. Blood is sampled regularly and the radioactive content measured. When there is half the original level, the interval between time 0 and this time is called the half-life ($t_{1/2}$) of the hormone. In the example shown, the plasma half-life of the hormone is 30 min.

however, they undergo metabolism in the liver into more water-soluble forms which are then excreted in bile and in the urine. Catecholamines are metabolized rapidly by the action of an enzyme called catechol-O-methyltransferase (COMT) which is found in most tissues but especially blood vessels, and by monoamine oxidase (MAO) in neural tissues.

Metabolism of hormones does not only result in their inactivation, however. There are examples of the principal secreted hormone being inactive and requiring metabolism in peripheral tissues to produce the active version. Testosterone is a good example of this: it needs to be metabolized to 5- α dihydrotestosterone in order to have its effects in its target tissues. Similarly, metabolism of Vitamin D3 is absolutely essential to produce the active calcitriol.

The metabolism of thyroxine is by the removal of one of the iodine residues of the hormone. Depending on which particular iodine residue is removed this either increases the activity of the hormone by producing T3, or decreases the activity by producing reverse T3. So we can see that metabolism, as well as providing a way of excreting hormones more efficiently, can also provide a way of regulating the activity of the hormone.

Important concepts in endocrine regulation

There are several concepts which are important for the understanding of endocrinology. These include the understanding of different patterns of hormone secretion,

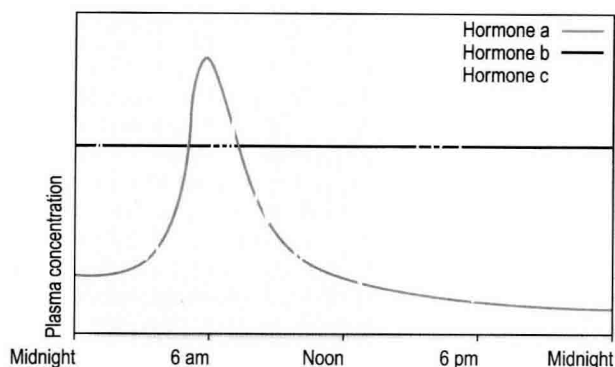


Figure 1.10 Diurnal variation and episodic secretion. Some hormones, such as hormone a, have a pronounced diurnal variation in their secretion. An example of such a hormone would be cortisol. Other hormones such as hormone b, which could be thyroxine, show very little diurnal variation. Hormone c shows episodic secretion; this pattern is common to many different hormones. It means that taking a single-point blood measurement of the hormone is of little value in diagnosing endocrine disorder because there is so much variation during the day.

the concept of an 'endocrine axis', the idea of negative feedback regulation, and the concepts of hormone antagonism and synergy.

Patterns of hormone secretion (Fig. 1.10)

Episodic secretion

The endocrine system is involved in a variety of homeostatic mechanisms in the body. In many cases regulation involves the maintenance of a 'set point' by correction of any deviation from this point. One example is the regulation of plasma calcium concentration, which is tightly controlled within closely set limits. In this case, any deviation from the set point triggers a hormonal response which acts to correct the calcium level (see Ch. 12). This results in the episodic secretion of the regulatory hormone. Other hormones are also secreted episodically, not because they are responding to physiological changes but because they are always secreted episodically or in bursts. These bursts can be quite frequent. For example, if you took very frequent blood samples to measure levels of GnRH (gonadotropin releasing hormone) you would see that levels went up and down in a saw-tooth manner over short periods of time. Overall, the pattern of secretion for hormones which are secreted episodically depends on other factors such as the half-life of the hormone and the frequency and amplitude of secretory episodes.

Diurnal variation

The secretion of many hormones has a predictable daily pattern which is known as diurnal variation (see Fig. 1.10). Growth hormone concentrations, for example, are usually so low that they are undetectable during the

day, but increase during the early part of sleep. In contrast, corticotropin concentrations are at their lowest at midnight and reach a peak at around 0800h each day. It is clearly important to be aware of diurnal variation when circulating hormone levels are being measured.

The main regulator of the 24-h periodicity of hormone secretion is the 'body clock', principally the suprachiasmatic nucleus (SCN) in the hypothalamus. However, other factors can influence the diurnal pattern of secretion. For example, cortisol, which increases in response to food intake, also increases in anticipation shortly before the times when we normally eat. Melatonin is one of the most obviously day-night related hormones. Its secretion is suppressed by light so it is produced during the hours of darkness (see Ch. 13). There is also evidence from cell culture experiments which suggests that some endocrine cells may even have their own inbuilt 24-h clock to help control their diurnal secretion.

Set point regulation

It is quite unusual for a hormone to be maintained at a set level. However, thyroxine concentrations in blood vary very little from day to day and are constant within a 24-h period. Changes in thyroxine concentrations occur only over weeks or months. One reason for this is the very long half-life of thyroxine in blood.

Different hormones clearly have markedly different patterns of secretion. However, most have some diurnal pattern but with episodic secretion on top of this underlying rhythm. Thus, there is a daily rhythm plus an element of response to physiological demand in the final pattern of secretion of most hormones.

Endocrine axis

Many hormones function as part of a cascade, so that the target tissue of one hormone is another endocrine gland. For example, thyrotropin releasing hormone (TRH) from the hypothalamus stimulates the release of pituitary TSH, which in turn stimulates release of thyroxine from the thyroid. The cascade allows amplifications of signal, flexibility of response to a variety of physiological stimuli and fine regulation of levels of the end hormonal product. This functional grouping is called an endocrine axis (Fig. 1.11) and, in the example we have used is called the hypothalamo-pituitary-thyroid axis. There are examples of endocrine axes in most of the following chapters.

Negative feedback

One of the most important principles of endocrine regulation is the concept of negative feedback. We have seen that one of the functions of hormones is to regulate homeostatic mechanisms in the body. However, there is also a homeostatic process that regulates levels of hormones. Basically, the body has systems which are designed to 'damp-down' excess of any kind. The simplest form of

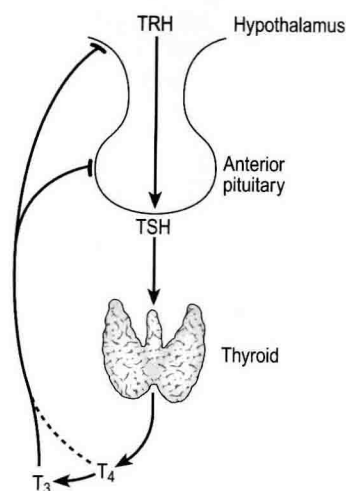


Figure 1.11 An endocrine axis and negative feedback. The axis shown is the hypothalamo-pituitary-thyroid axis. Thyrotropin releasing hormone (TRH), from the hypothalamus, stimulates the release of thyroid stimulating hormone (TSH) from the anterior pituitary. The TSH stimulates the thyroid gland to release T_4 and T_3 , which exert a negative feedback inhibitory effect on the hypothalamus and pituitary glands.

negative feedback is where the final product of an endocrine cascade acts to inhibit release of hormones higher up the cascade (see Fig. 1.11). In the example shown, a stimulus such as exercise causes an increase in thyrotropin releasing hormone (TRH) from the hypothalamus, which in turn acts to increase the secretion of thyroid stimulating hormone (TSH) from the anterior pituitary. The increased TSH stimulates the thyroid gland to produce thyroxine but one of the effects of thyroxine is to act on both the hypothalamus and anterior pituitary to decrease the production of TRH and TSH, respectively. This pattern, of the final product of a cascade system exerting negative feedback higher up the endocrine axis, is one which you will see repeated throughout this book.

Negative feedback does not mean that hormone production is switched on and off like a light switch. There is a basal or residual rate of hormone secretion which can be increased by a variety of stimuli and decreased by negative feedback. This means that all endocrine systems are dynamic, in other words they are responsive to change and with a tendency to return to the basal or residual state of activity.

Most negative feedback operates through a genomic mechanism resulting in a decrease in the production of hormones higher up the endocrine axis. This process takes place over a relatively long time period, hours to days, and so it is known as 'delayed feedback'. An example of this would be the action of thyroxine on the production of TRH and TSH. This type of feedback is determined by both the amplitude of the original increase in hormone secretion and its duration.

Some systems also have a more rapid negative feedback response called 'fast feedback', which is clearly not