



# 中國當代藝術家畫庫

向墨林



中國畫報

出版社





畫家像 Xiang Molin

向墨林，湖南省永順縣人，1940 年出生，湖南省美術家協會會員，水彩畫研究會會員，現在鐵道部株洲電力機車工廠工會文化宮工作。他長期在基層生活中堅持水彩畫學習、寫生和創作，作品具有質樸、純真的藝術特色，真實地反映了現代工業大企業中工人的勞動、生活和情感，描繪了湖南地區的鄉土風情，逐步形成了自己的藝術風格。作品多次在省內外展出和發表，水彩畫《晨》為中國美術館收藏。

Xiang Molin was born in Yongshun, Hunan province in 1940. He is a member of the Hunan Provincial Artists Association and the Watercolour Painting Research Institute. He is working at the cultural palace of the labour union of the Zhuzhou Electric Locomotive Plant of the Ministry of Railway. As he has been living in the grass-roots units for a long time he has stuck to the learning of watercolour painting and insisted on sketching from life. His works have the pure and plain artistic characteristics, portray the labour, life and feeling of the workers of the modern big industrial enterprise, and depict the local flavour of the Hunan district. He has evolved gradually an artistic style of his own. His works have been exhibited and published for many times. His watercolour painting *The Morning* has been collected by the Chinese Art Gallery.

封面：通往鄉鎮的小路(1990 年)

Front cover: *A Path to the Town*





晨霧

*Morning Fog*





秋艷(1989 年)

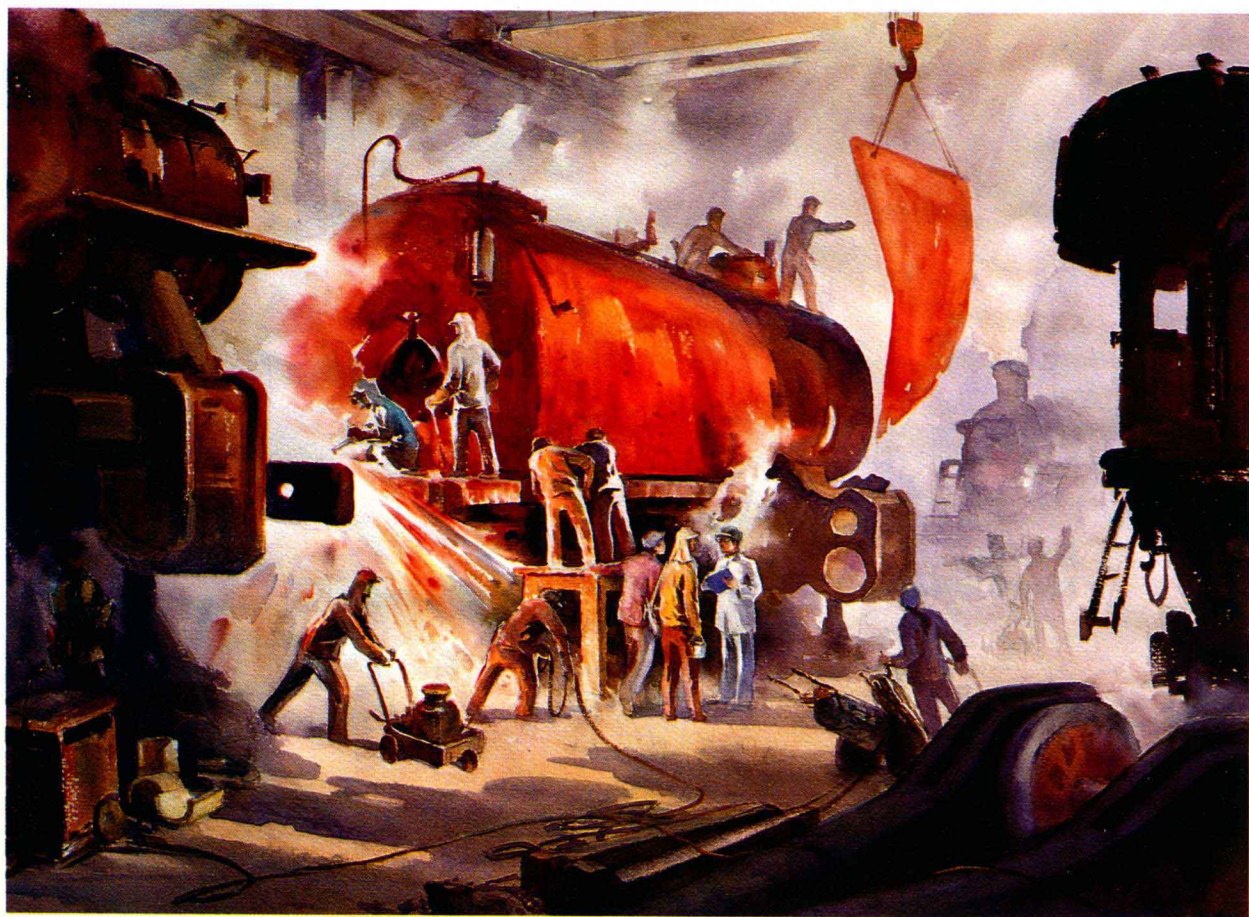
*Charming Autumn Scenery*





牧歌(1991 年)

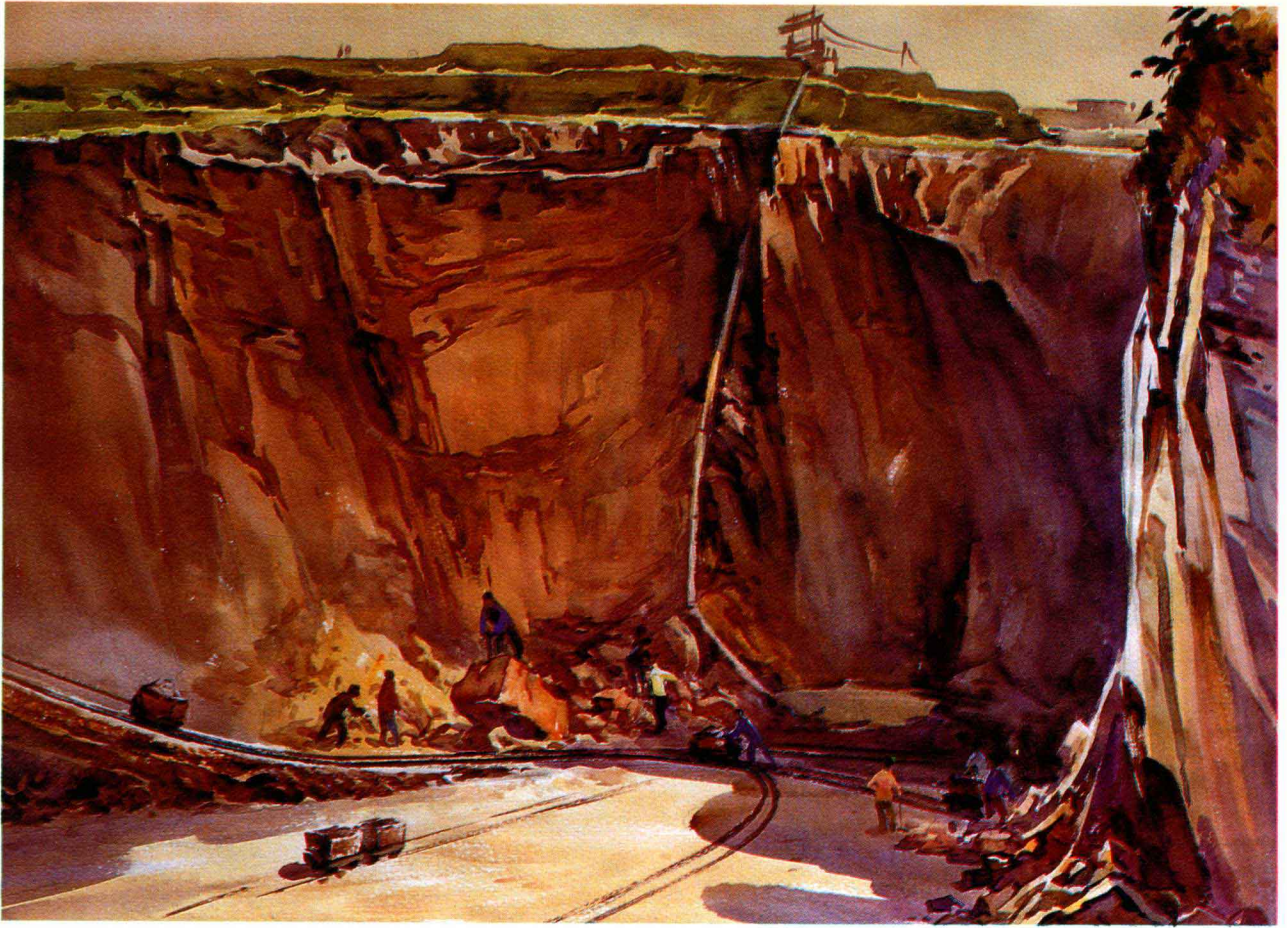
*A Pastoral Song*



機車廠的早晨(1977 年)

*A Morning in Locomotive Plant*





鄉鎮采石場(1990 年)

*A Quarry in Town*









緑雨(1992 年)  
*Green Rain*





樹影垂碧(1989 年)  
*shadow of a Tree*

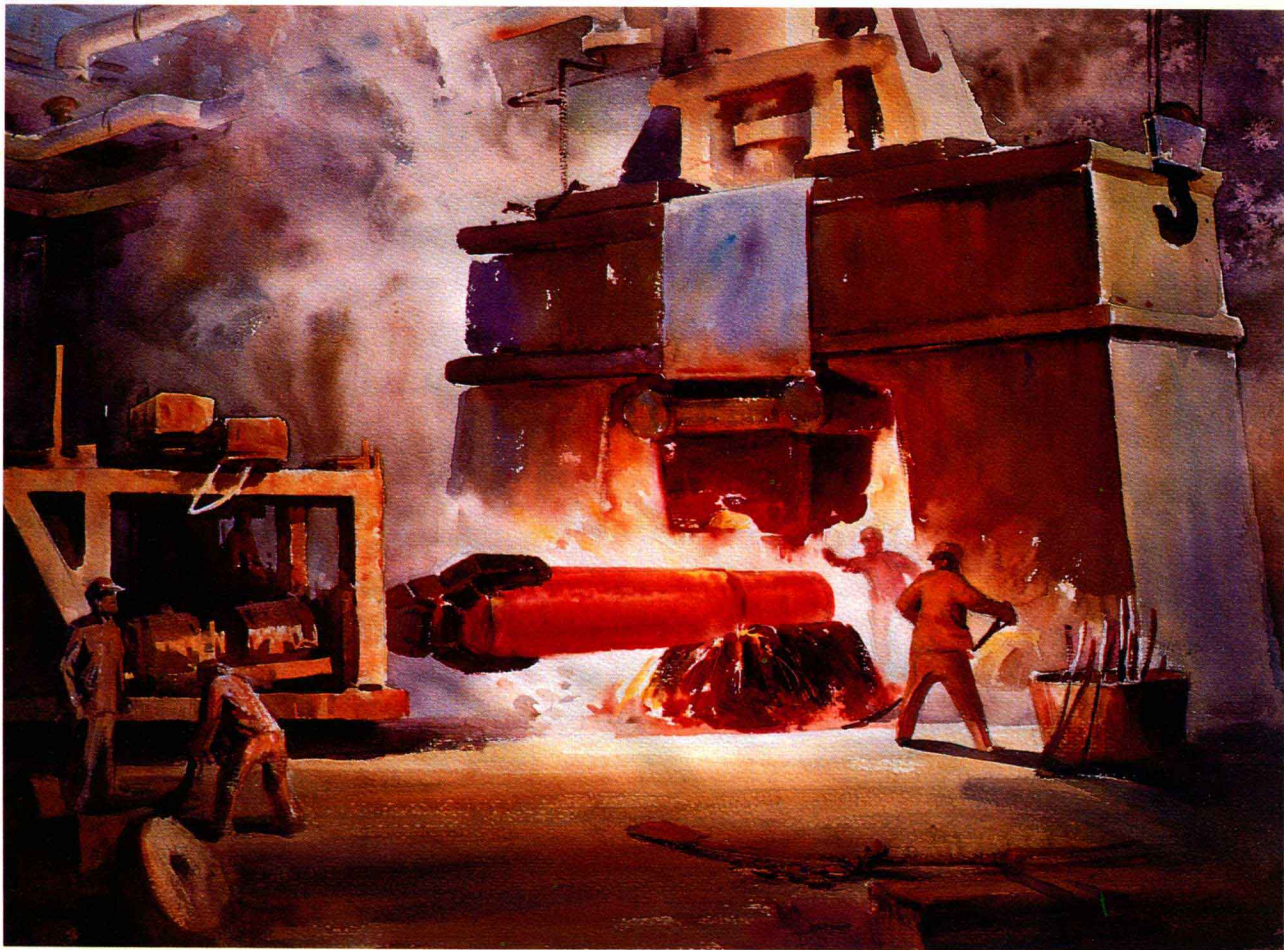




復綫工棚(1993 年)

*Multiple Track with Bars*





鍛(1984 年)  
*Forging*

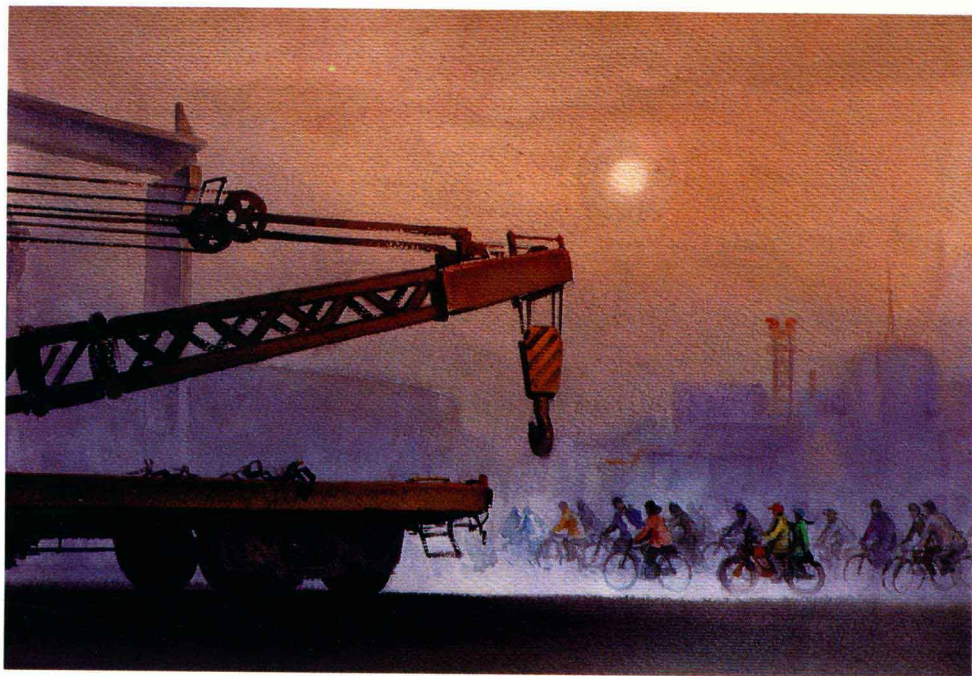


海濱衛士(1987 年)  
*Seaside Guards*

靜靜的小河(1991 年)  
*A Quiet Little River*



晨(1990 年)  
*The Morning*







銀瀑飛瀉(1984 年)

*A Waterfall*





海南漁港(1987 年)

*A Fishing Port in Hainan*



# TREASURES OF CONTEMPORARY CHINESE PAINTING

ISBN 7-80024-183-1/J • 184 (K) 5.80