

# EUROPEAN STYLE

## 欧洲风格建筑

胡延利 陈宙颖 主编

# 欧洲风格建筑

## European Style

胡延利 陈宙颖 主编

## 图书在版编目(CIP)数据

欧洲风格建筑 / 胡延利, 陈宙颖主编.  
— 南京: 江苏人民出版社, 2012.8  
ISBN 978-7-214-08361-6

I. ①欧… II. ①胡… ②陈… III. ①建筑设计  
—作品集—世界—现代 IV. ①TU206

中国版本图书馆CIP数据核字(2012)第122459号

## 欧洲风格建筑

胡延利 陈宙颖 主编

---

版式设计	刘宏智
责任编辑	蒋卫国
特约编辑	林 溪
责任监印	彭李君
出版发行	凤凰出版传媒集团 凤凰出版传媒股份有限公司 江苏人民出版社 天津凤凰空间文化传媒有限公司
销售电话	022-87893668
网 址	<a href="http://www.ifengspace.cn">http://www.ifengspace.cn</a>
集团地址	凤凰出版传媒集团(南京湖南路1号A楼 邮编: 210009)
经 销	全国新华书店
印 刷	深圳市彩美印刷有限公司
开 本	889mm×1194mm 1/12
印 张	27
字 数	162千字
版 次	2012年8月第1版
印 次	2012年8月第1次印刷
书 号	ISBN 978-7-214-08361-6
定 价	328.00元

(本书若有印装质量问题, 请向发行公司调换)

## 内容介绍

欧洲是西方建筑文化的发源地，这里的建筑艺术百花竞艳、万象并存，诞生了不少在世界范围内引领风骚的艺术巨匠。欧洲各个国家都有着独特的政治、文化、地理背景，各自的建筑风格在保持本国文化特质的基础上，亦广泛地吸收了其他国家建筑艺术的精华，彼此之间融会贯通、潜移默化，形成了具有强大包容性和多元性的艺术特质与建筑文化。

本书荟萃活跃在欧洲当代建筑舞台上的领军人物——BFLS建筑事务所、霍金斯\布朗建筑事务所、阿莫尼克与马松建筑事务所、曼纽勒·戈特德建筑事务所、N+B建筑事务所、马根建筑事务所、迪特马尔·菲茨汀格建筑事务所、奥德留斯·安布萨斯建筑事务所、za建筑工作室、马西诺·马里亚尼建筑事务所等的设计作品。他们的创作体现了当代建筑设计的现实主题和理念，代表了建筑在新时代的变化、突破和变革，既涵盖了全球性的视角，也突出了欧洲建筑独有的风格元素和文化内涵。

书中每一个精彩的设计作品都蕴含着丰沛的创造力与生命力，给予读者以灵感和启发。震撼视觉的影像和详细严谨的绘图，使阅读本书的过程成为一次通向神奇的建筑世界的激动旅程。

Europe is the birthplace of western civilization, famous for its great diversity in arts and architectures. It is also the motherland of many masters who play leading roles in their respective fields worldwide.

Each European country incorporates other countries' architectural elements into its own language, meanwhile, develops its own architectural styles based upon its special political, cultural as well as geographical backgrounds, making its own trademark while sharing many similarities with each others in architectural design.

European architects have long been both cosmopolitan and inward-looking; such quality enables them to introduce the essence of other cultures while maintaining its own traditions as well as cultural identity, thus, constituting a brand new European architectural culture of tolerance of multi-culturalism and promotion of generality in arts.

The book collects the design works of a galaxy of elites who are active in European architectural design stage of the present time. BFLS, Hawkins\Brown, Harmonic+Masson Architectes, Manuelle Gautrand Architecture, N+B Architectes, Magén Arquitectos, Dietmar Feichtinger Architects, Audrius Ambrasas Architects, Studio za arhitekturu, Massimo Mariani Architetto and etc. These design works reflect not only realistic theme and concepts of the time, but also the global view as well as its European elements. Reading through the book, readers will get a chance to witness changes, breakthroughs and transformations of a new era for Spanish architectural design represented by each and every masterpiece.

With wonderful case studies throughout the book, we hope this book will stimulate readers' inspiration and creativity. The amazing pictures and photographs and the detailed sketches will take readers on exciting journey of fantastic world of architecture.

# CONTENTS 目录

## Northern Europe 北欧

<b>JKMM Architects</b> <b>JKMM建筑事务所</b> Turku City Library 图尔库市图书馆	<b>Finland</b> 芬兰	西福尔夏日别墅 2		<b>BFLS建筑事务所</b>	英国
	10			Strata SE1	30
		<b>Tham &amp; Videgård Arkitekter</b> <b>山姆与韦德格尔建筑事务所</b> Kalmar Museum of Art	<b>Sweden</b> 瑞典	Strata SE1大厦	
		卡马尔艺术博物馆	24	<b>Hawkins\Brown</b>	United Kingdom
<b>FKL Architects</b> <b>FKL建筑事务所</b> A-house A住宅	<b>Ireland</b> 爱尔兰			霍金斯\布朗建筑事务所	英国
	14	<b>White arkitekter</b> <b>怀特建筑事务所</b> Stockholm Waterfront	<b>Sweden</b> 瑞典	Corby Cube	34
		斯德哥尔摩滨水区	26	科比立方体	
<b>Jarmund / Vignæs AS Architects</b> <b>加姆德 / 魏格纳斯建筑事务所</b> Summer House Vestfold 2	<b>Norway</b> 挪威			<b>Hawkins\Brown+Studio Egret West</b>	United Kingdom
	18	<b>BFLS</b>	United Kingdom	霍金斯\布朗建筑事务所+埃格莱特·维斯特工作室	英国
				Park Hill	38
				Park Hill社区	

## Western Europe 西欧

<b>Crepain Binst Architecture</b> <b>克里潘·宾斯特建筑事务所</b> Infrac West Offices Infrac West 办公大楼	<b>Belgium</b> 比利时	Albert Einstein School 阿尔伯特·爱因斯坦学院 Secondary School 中学 Paul Valéry High School 保尔·瓦莱里高中	78	TransPort 运输港口大楼	112
	44		82		
<b>Samyn and Partners</b> <b>塞米恩合伙人建筑事务所</b> Euro Space Centre at Libin-Transinne 利班-特朗西纳欧洲中心	<b>Belgium</b> 比利时		86	<b>Camilo Rebelo Arquitecto / Pedro Tiago Pimentel Arquitecto</b>	Portugal
	46	<b>Broekbakema</b> <b>Broekbakema建筑事务所</b> Campus Presikhaaf 普雷士哈弗园区 Windesheim Building X 温德斯海姆X大楼		卡米罗·热贝罗建筑事务所 / 佩德罗·迪亚哥·皮曼特尔建筑事务所	葡萄牙
				MAAVC - Museum of Art and Archaeology of the Côa Valley	116
				Côa Valley艺术与建筑博物馆	
<b>Béal &amp; Blanckaert Architectes</b> <b>贝尔与布朗格尔建筑事务所</b> Centre of Pedagogic Multi-media Resources 多媒体资源教育中心	<b>France</b> 法国			<b>espaço a3</b>	Portugal
	50		94	<b>espaço a3建筑事务所</b>	葡萄牙
		<b>Drost + van Veen architecten</b> <b>Drost + van Veen建筑事务所</b> "The Oostvaarders", Nature Education Centre "The Oostvaarders" 自然教育中心	<b>the Netherlands</b> 荷兰	House in Marisol	120
	52		98	玛丽莎住宅	
				House in Vale Bem	124
				里斯本Vale Bem住宅	
<b>Hamonic + Masson Architectes</b> <b>阿莫尼克与马松建筑事务所</b> 65 Student Apartments 65学生公寓 36 Apartments and Medical Centre 36公寓与医疗中心 Elementary School 小学	<b>France</b> 法国			<b>Matéria Modular Architects</b>	Portugal
	54	<b>Hoogte Twee Architecten</b> <b>Hoogte Twee建筑事务所</b> Dwelling-workhouse HDT HDT办公-居住别墅	<b>the Netherlands</b> 荷兰	<b>Matéria Modular建筑事务所</b>	葡萄牙
	58		102	Casas da Fonte	128
				Fonte别墅	
<b>Jacques Ferrier Architectures</b> <b>雅克·费希尔建筑事务所</b> Head Office for Piper Heidsieck and Charles Heidsieck Champagnes 白雪香槟及查尔斯·海德西克香槟公司总部 French Sailing Museum 法国航海博物馆	<b>France</b> 法国			<b>Tiago Silva Dias arquitectos</b>	Portugal
	62	<b>HVDN architecten</b> <b>HVDN建筑事务所</b> Het 4e Gymnasium-school at Houthavens Houthavens Het 4e体育学校	<b>the Netherlands</b> 荷兰	迪亚哥·席尔瓦·迪亚斯	葡萄牙
	66		106	Municipal Market of Pinhal Novo 皮尼亚尔诺市政债券市场	130
		<b>KCAP Architects &amp; Planners</b> <b>KCAP建筑与规划事务所</b> Red Apple 红苹果	<b>the Netherlands</b> 荷兰	<b>Carrejón Arquitectos</b>	Spain
	68		108	<b>塞瑞隆建筑事务所</b>	西班牙
		<b>Kingma Roorda Architecten</b> <b>金玛·罗尔达建筑事务所</b> Quay Housing 码头住宅	<b>the Netherlands</b> 荷兰	New Social Buildings in the Stadium Casablanca of Zaragoza 萨拉戈萨卡萨布兰卡露天运动场新社会大楼	134
	72		110	<b>Magén Arquitectos</b>	Spain
				<b>马根建筑事务所</b>	西班牙
				Headquarters of the Environment Service and Public Spaces 环境服务与公共空间总部大楼	138
<b>N+B Architectes</b> <b>N+B建筑事务所</b>	<b>France</b> 法国	<b>Architectenbureau Paul de Ruiter</b> <b>保尔·德·惠特建筑事务所</b>	<b>the Netherlands</b> 荷兰	Kindergarten in Rosales del Canal 罗萨莱卡纳尔幼儿园	142

## Central Europe 中欧

<b>Architects Collective</b> <b>AC建筑事务所</b> Leeb Fruit Orchard 里布果园	<b>Austria</b> 奥地利 148	<b>Synn Architekten</b> <b>Synn建筑事务所</b> House Elise 伊利斯公馆 [KO]mic [KO]mic住宅	<b>Austria</b> 奥地利 184 188	<b>Bonnard Woeffray architectes</b> <b>伯纳尔·乌弗瑞建筑事务所</b> Bovernier Primary School Extension 波韦尼尔小学扩建 BSV College of Further Education BSV继续教育学院	<b>Switzerland</b> 瑞士 214 218
<b>Dietmar Feichtinger Architectes</b> <b>迪特马尔·菲茨汀格建筑事务所</b> Klinikum Klagenfurt 克拉根福医院 Sales and Financial Centre Voest Alpine Voest Alpine销售与金融中心 Social housing ZAC Claude Bernard 克劳德·伯纳德社会住房	<b>Austria</b> 奥地利 150 160 166	<b>Luxbau Company Office Conversion</b> Luxbau公司办公楼改建 Young Housing at the Nordbahnhof 诺德巴诺夫青年公寓	<b>Germany</b> 德国 190 194	<b>EM2N   MATHIAS MÜLLER   DANIEL NIGGLI ARCHITEKTEN AG   ETH   SIA   BSA</b> <b>EM2N 马赛厄斯·穆勒 丹尼尔·尼格里建筑事务所</b> Conversion Rosenberg 罗森堡住宅改建 Culture and Congress Centre 文化与议会中心 Refurbishment Viaduct Arches 高架拱桥翻新项目 Hotel City Garden 城市宾馆花园	<b>Switzerland</b> 瑞士 222 226 228 232
<b>gerner°gerner plus</b> <b>gerner°gerner plus建筑事务所</b> Veritas—Regional Visitor and Wine Centre Veritas 地区旅游与酒业中心	<b>Austria</b> 奥地利 172	<b>archimedialab</b> <b>archimedialab建筑事务所</b> Administration Building and Master Plan for ZMS Schwandorf Incineration Plant 施万多夫焚化厂行政大楼与总体规划	<b>Germany</b> 德国 198		
<b>Josef Weichenberger Architects</b> <b>乔瑟夫·维肯博尔格建筑事务所</b> Wohngarten Sensengasse Wohngarten Sensengasse住宅	<b>Austria</b> 奥地利 176	<b>Kaestle Ocker Roeder Architekten BDA</b> <b>卡斯特勒·奥克尔·洛伊德建筑事务所</b> Haus mit Atelier 住宅与工作室 St. Laurentius 圣劳伦休斯市镇中心	<b>Germany</b> 德国 204 208	<b>Luca Gazzaniga Architeti</b> <b>卢卡·加扎尼加建筑事务所</b> Ibis Hotel Ibis旅馆	<b>Switzerland</b> 瑞士 236
<b>Pichler &amp; Traupmann Architekten</b> <b>皮克莱尔与特劳普曼建筑事务所</b> Raiffeisen Financial Centre 赖夫艾森金融中心	<b>Austria</b> 奥地利 180	<b>Titus Bernhard Architekten BDA</b> <b>泰特斯·伯恩哈德建筑事务所</b> House M M住宅	<b>Germany</b> 德国 210		

## Eastern Europe 东欧

<b>ARHIS Architects</b> <b>ARHIS建筑事务所</b> Observation Tower 观测塔 Riga Plaza 里加广场	<b>Latvia</b> 拉脱维亚 242 246	<b>Audrius Ambrasas Architects</b> <b>奥德留斯·安布拉斯建筑事务所</b> DnB NORD Office Building in Riga 里加DnB NORD办公大楼 Swedbank Head Office Building 瑞典银行总部大楼	<b>Lithuania</b> 立陶宛 250 254	<b>Robert Konieczny - KWK Promes</b> <b>罗伯特·科涅奇内建筑事务所</b> Safe House 安全住宅	<b>Poland</b> 波兰 262
--	-------------------------------------	--	---------------------------------------	--	----------------------------

## Southern Europe 南欧

<b>Arhipolis Architects</b> <b>阿瑞普利斯建筑事务所</b> Residential Building 7-4 7-4住宅建筑	<b>Croatia</b> 克罗地亚 270	<b>Ponzano Primary School</b> 庞萨诺小学 Urban Lake Houses 城市湖畔住宅	280 284	and Art Forum Exhibition Area 维特行政总部与艺术论坛展区	300
<b>Studio za arhitekturu</b> <b>za建筑工作室</b> Museum of Contemporary Art 当代艺术博物馆	<b>Croatia</b> 克罗地亚 272	<b>Massimo Mariani Architetto</b> <b>马西诺·马里亚尼建筑事务所</b> Benozzo Gozzoli Museum 贝诺佐·戈佐利博物馆 House in Empoli 恩波利住宅	<b>Italy</b> 意大利 290 294 296	<b>monovolume architecture + design</b> <b>monovolume建筑设计事务所</b> Giacomuzzi New Headquarters Building 贾科穆齐新总部大楼	<b>Italy</b> 意大利 304
<b>C+C04STUDIO</b> <b>C+C04工作室</b> Condominio P P住宅	<b>Italy</b> 意大利 278	<b>Cabel Industry</b> 卡贝尔工业大楼		<b>Enota</b> <b>Enota建筑事务所</b> Podčetrtek Sports Hall 博德塞泰克运动馆	<b>Slovenia</b> 斯洛文尼亚 308
<b>C+S associati</b> <b>C+S 联合建筑事务所</b>	<b>Italy</b> 意大利	<b>Mellusoarchitettura / Politecnica</b> <b>梅卢索建筑事务所 / 波利泰克尼卡事务所</b> Würth Headquarters Administrative Building	<b>Italy</b> 意大利	<b>Teget Architectural Office</b> <b>Teget建筑工作室</b> YapiKredi Bank Academy YapiKredi银行学院	<b>Turkey</b> 土耳其 312

EUROPEAN  
STYLE





# Northern Europe

JKMM Architects *Finland*

FKLarchitects *Ireland*

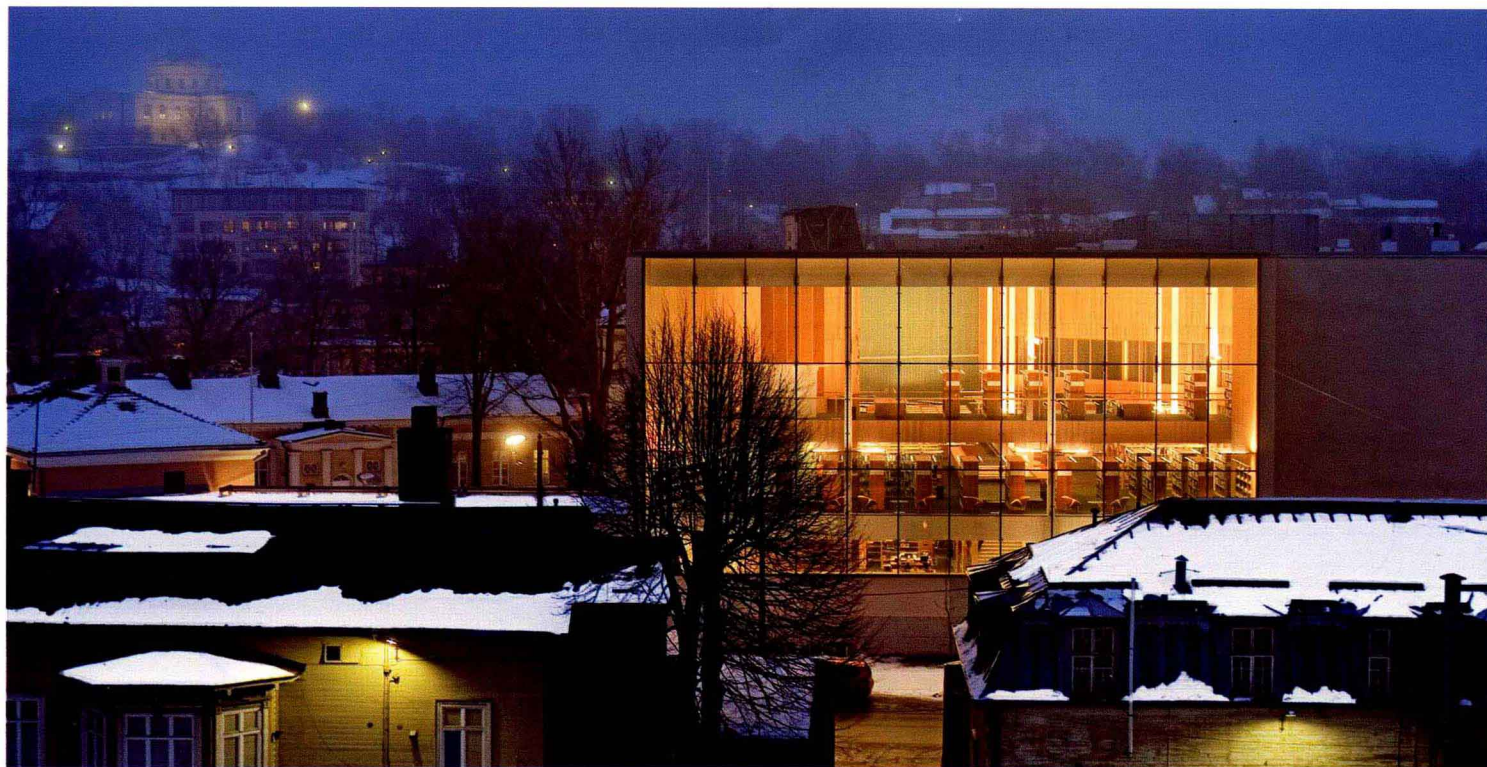
Jarmund / Vignæs AS Architects *Norway*

Tham & Videgård Arkitekter *Sweden*

White arkitekter *Sweden*

BFLS *United Kingdom*

Hawkins\Brown + Studio Egret West *United Kingdom*



JKMM Architects

## Turku City Library

*Turku, Finland*

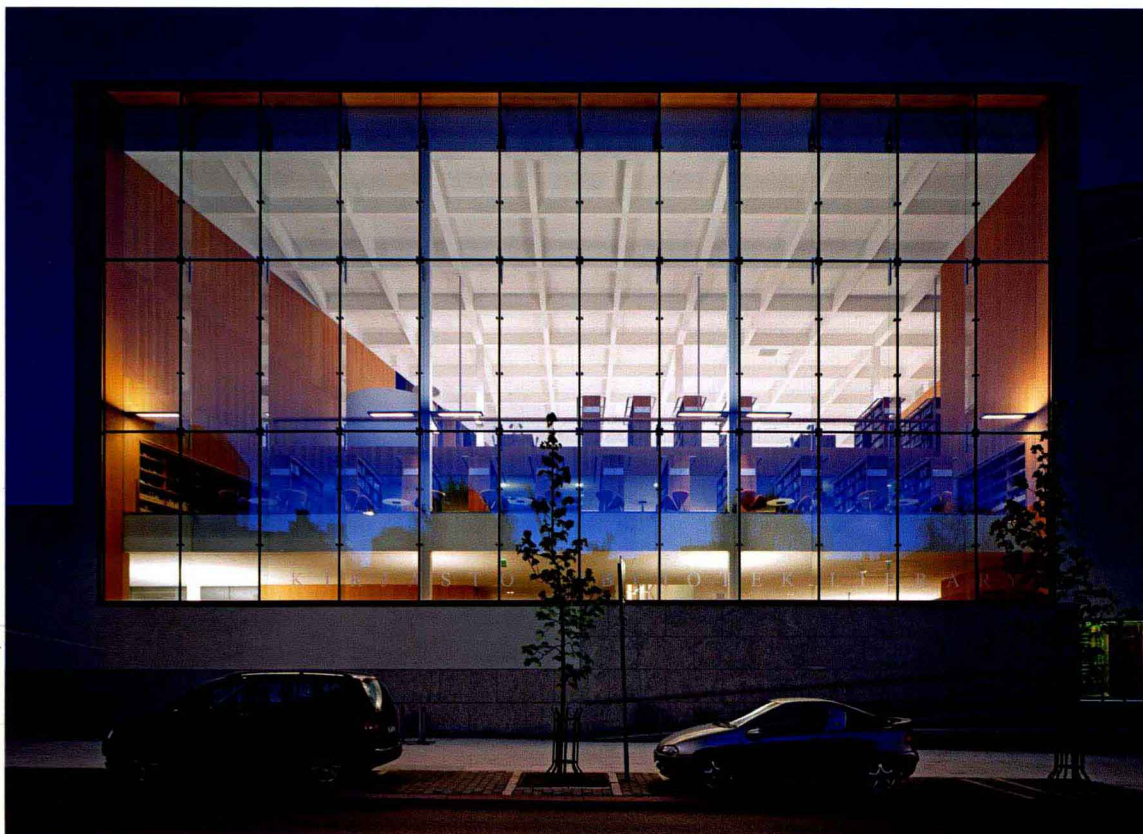
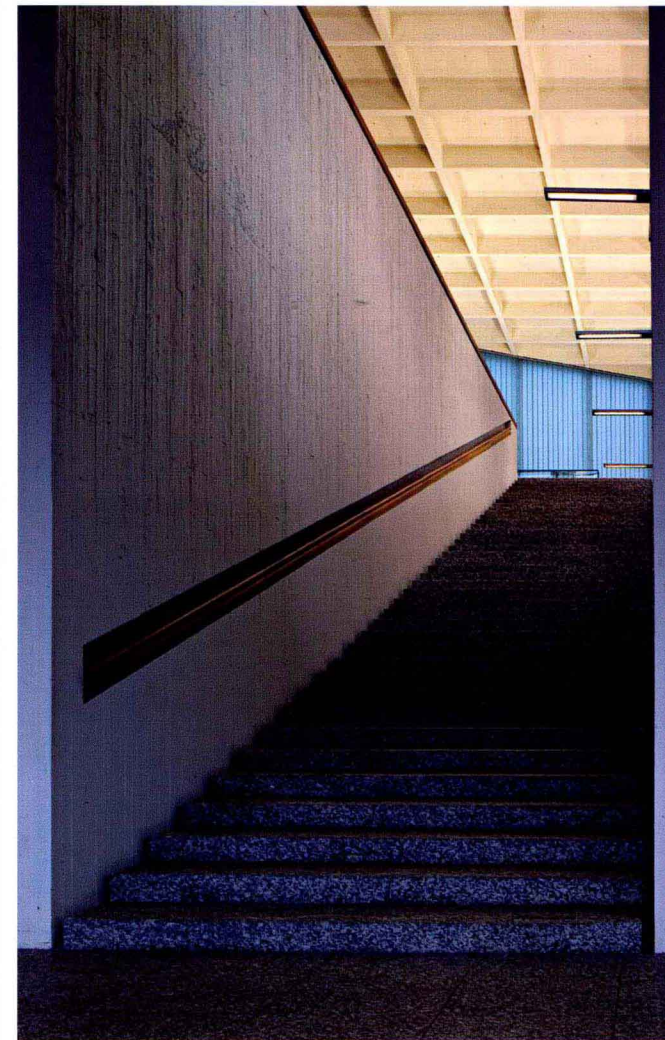
The new city library in Turku is located at the historical centre of the city. The building is the latest addition to a block with the old library and several other historically valuable buildings. The historical and cultural value of the site presented a great challenge for the planning of the new building. The objective of the project was to create a new construct, which would harmonize with the historically invaluable setting while also manifesting architecture of its own age. In terms of urban planning the goal was to fill out the open and unstructured street corner by following the edges of the existing urban grid. By constructing the building on the outer perimeter, we were able to provide an open space in the middle of the lot, which was designed to serve as a courtyard for recreation and a stage for cultural events. The interior of the new building is annexed with the existing 100-year old library building and the chancellery of the governor built at the beginning of the 19th century, now restored and transformed to facilitate a café and meeting rooms.

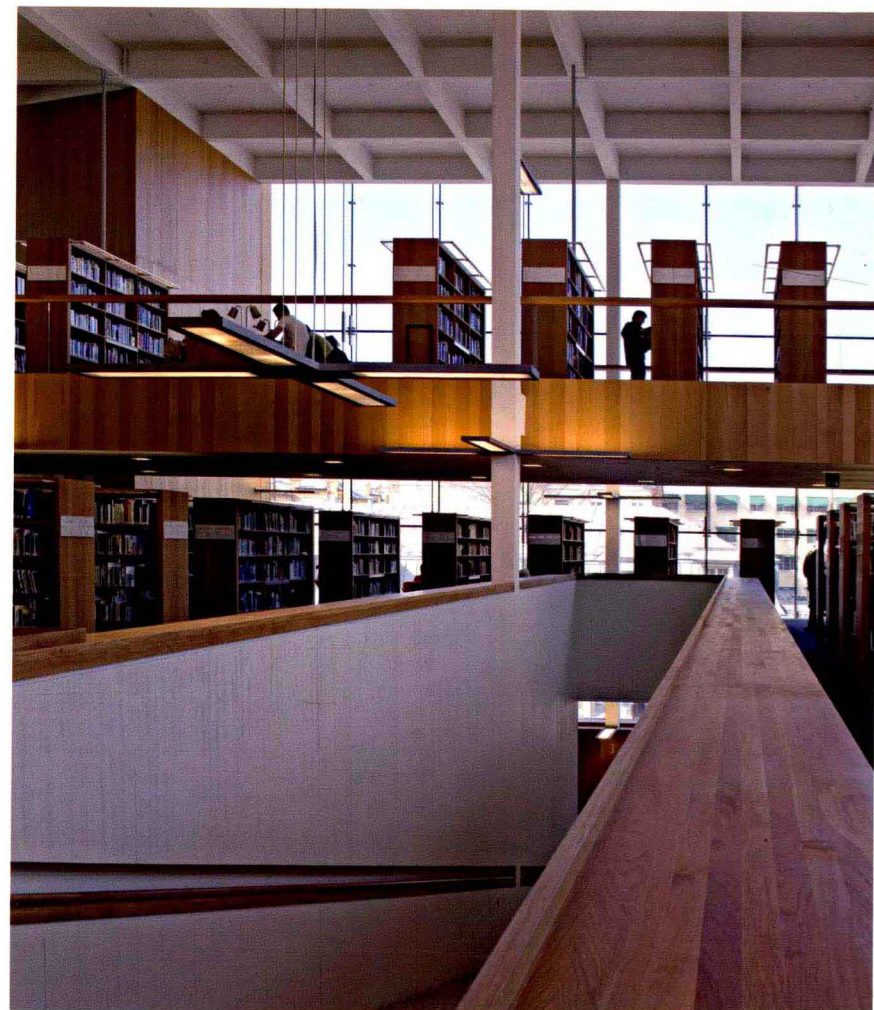
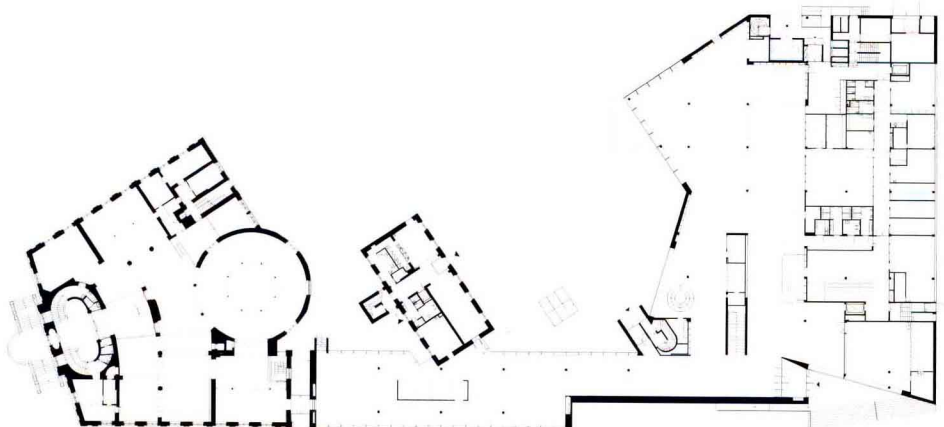
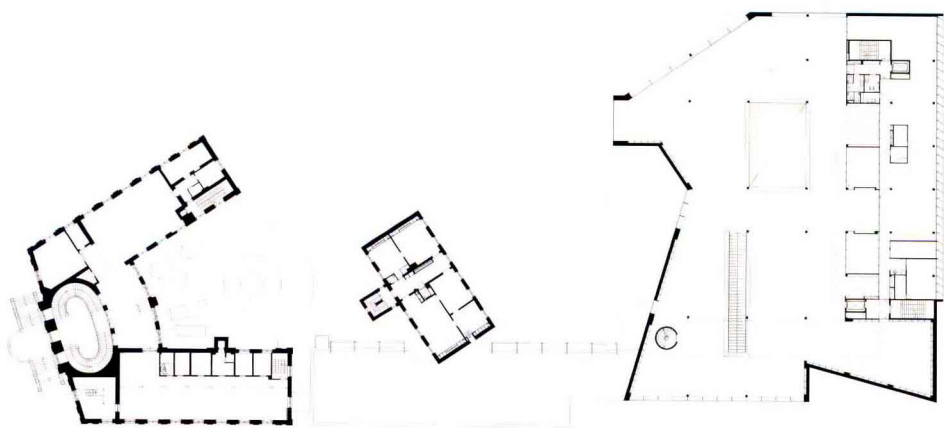
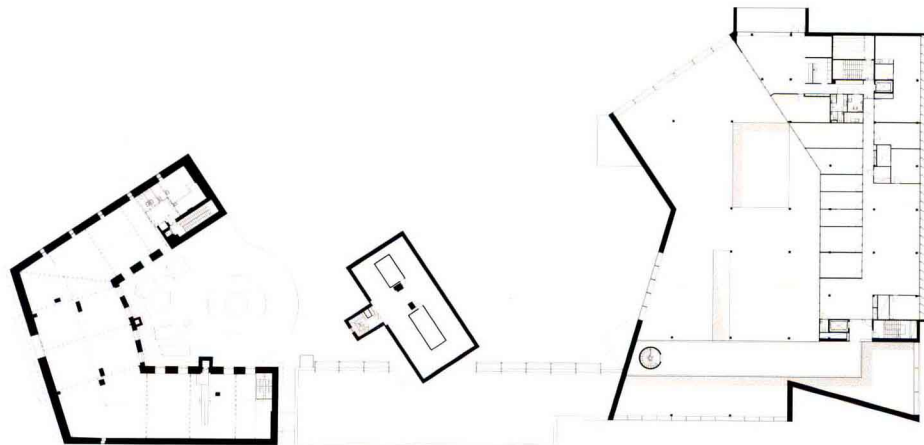
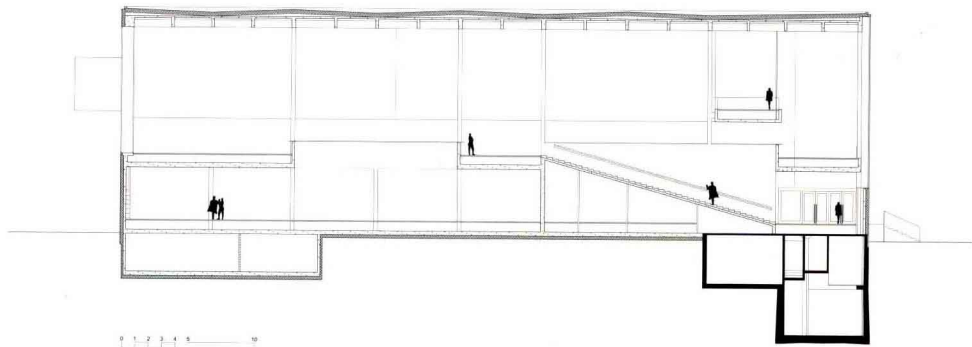
The new library has a functionally clear design. The public spaces are situated mainly on two floors surrounding the opening to the courtyard. The staff premises are located systematically on one side of the building facing the street. The new main entrance opens onto the corner of two main streets. The first floor has a reception and lounge area, a children's and youth section, and a modernized version of a periodicals reading room called the news market, which functions simultaneously as the link between the new library and the old buildings.

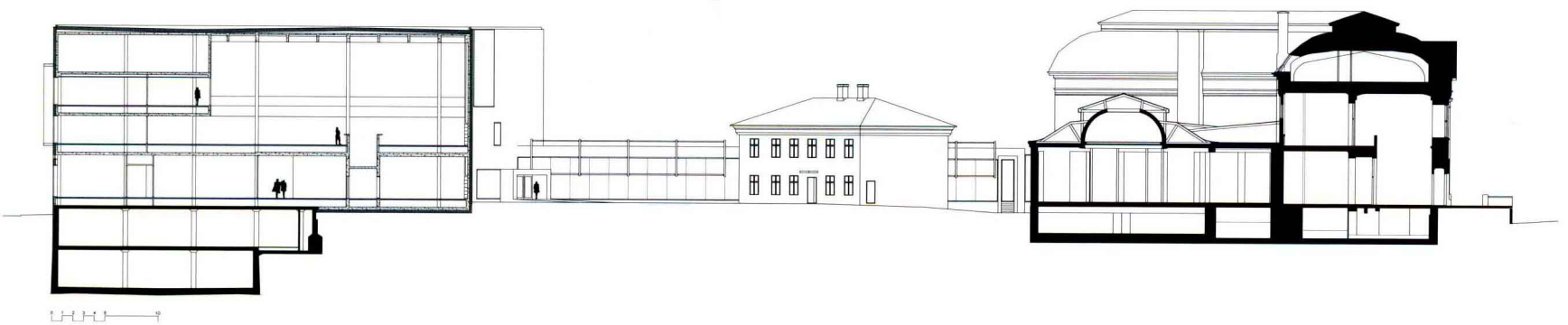
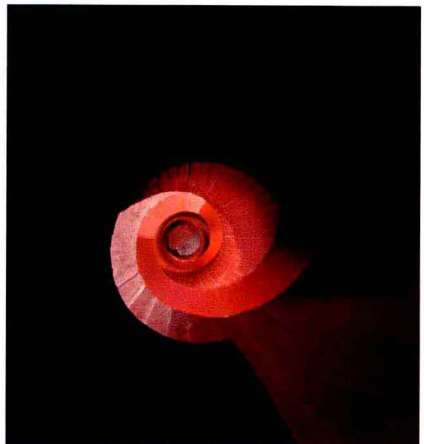
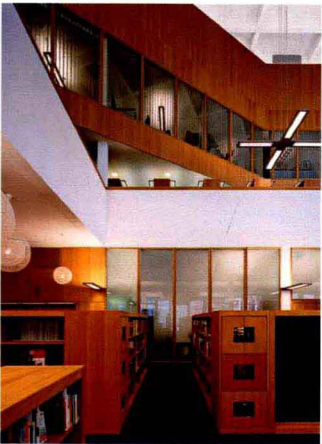
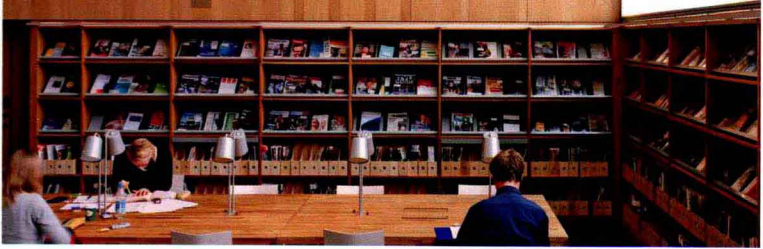
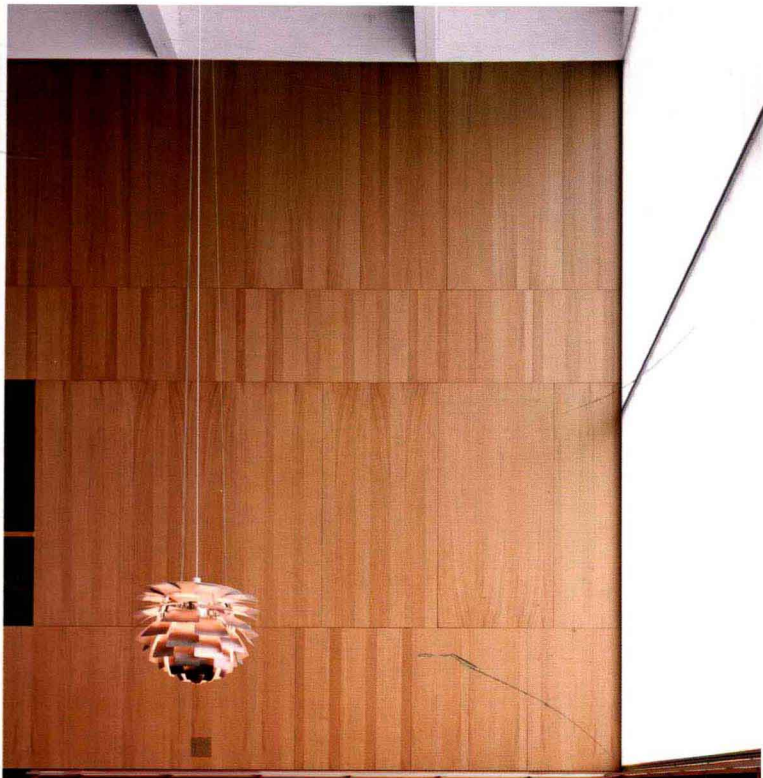
The main room of the new building is reached through a main stairway, which opens to a monumental space containing the non-fiction stacks and reading areas. The guiding principle in the space planning was flexibility; the functions of the library may change radically in the future with the introduction of new media. The rooms are open, and the functions are limited only by the transformability of the easy-to-move furniture.

The materials of the building were chosen to accommodate the environment. The facades are mainly plastered, which is the predominant material of the old buildings in the block. Initially we considered using red brick, but gave up the idea to allow the old library building to remain the only brick building on the block, thus emphasizing its primary position in the neighbourhood. We also used natural stone extensively on the facades, the stairway and the grounds surrounding the building. In the interior, we used mostly European Oak in the wall furnishing and furniture. The structure of the building was made from concrete cast on site, which was left exposed as an important part of the interior design. The fair-faced concrete was formed with vertical boards to achieve the rough feeling characteristic of the material. Glass was given a seminal role both in the outer architecture and the interior world. From the first steps of the planning process, it was clear that the exuberant use of glass would be the best choice. Transparency befits this type of building; a public library building should evoke the idea of openness.

试读结束：需要全本请在线购买：[www.ertongbook.com](http://www.ertongbook.com)









FKLarchitects

A-house  
*Dublin, Ireland*

A-house is a single-family house located on a mews lane in a Victorian suburb of Dublin city. The house is an exploration of diagonal space within an orthogonal form and the possibilities of integrating environmental concerns at a fundamental level.

A concrete tube provides the structural and spatial organization and encloses the public areas of the house. Divided by joinery elements, the tube of space is twisted between ground and first floor to allow a relationship to the garden and daylight from above. This diagonal spatial relationship between the two floors allows a simultaneous experience of all dimensions of the house – length, breadth, height and extending into the surroundings in unexpected diagonal glimpses.

Concerns of establishing a relationship with the garden and maximizing daylight penetration to the north-facing garden facade when east & west facades are blank, dictated the organization of family rooms at ground and first floor connected by a narrow void. A strong visual and spatial connection is established between the kitchen/dining room at ground level and the study on the first floor, capitalizing on natural lighting and glimpsed views. Arranged

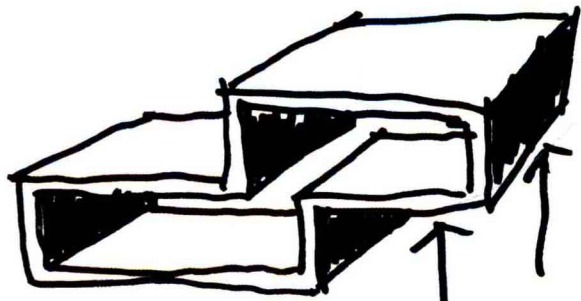
around the conceptual tube, are the less public rooms: garage, utility room and WC at ground level and children's bedrooms and bathroom at first floor.

The layout allows for an independent or guest bedroom suite at ground level and gives flexibility to accommodate change in family circumstances. The modest garden will provide space to grow vegetables and fruit while the roofs are covered in sedum to provide surface water attenuation and replace the building's 'green footprint'.

In common with its neighbors, the exterior is restrained, choosing a formal expression of the relationships between internal spaces and elevation. Drawing on the Georgian tradition, windows are floor-to-ceiling allowing daylight to penetrate deep into the plan.

Set within a tight urban context of protected structures, the relationship with external spaces is not founded on an expectation of privacy externally but on diagonal relationships that extend the perspective to distant views and provided a backdrop to the internal activity

*Photographs: Verena Hilgenfeld*



slipped tube

